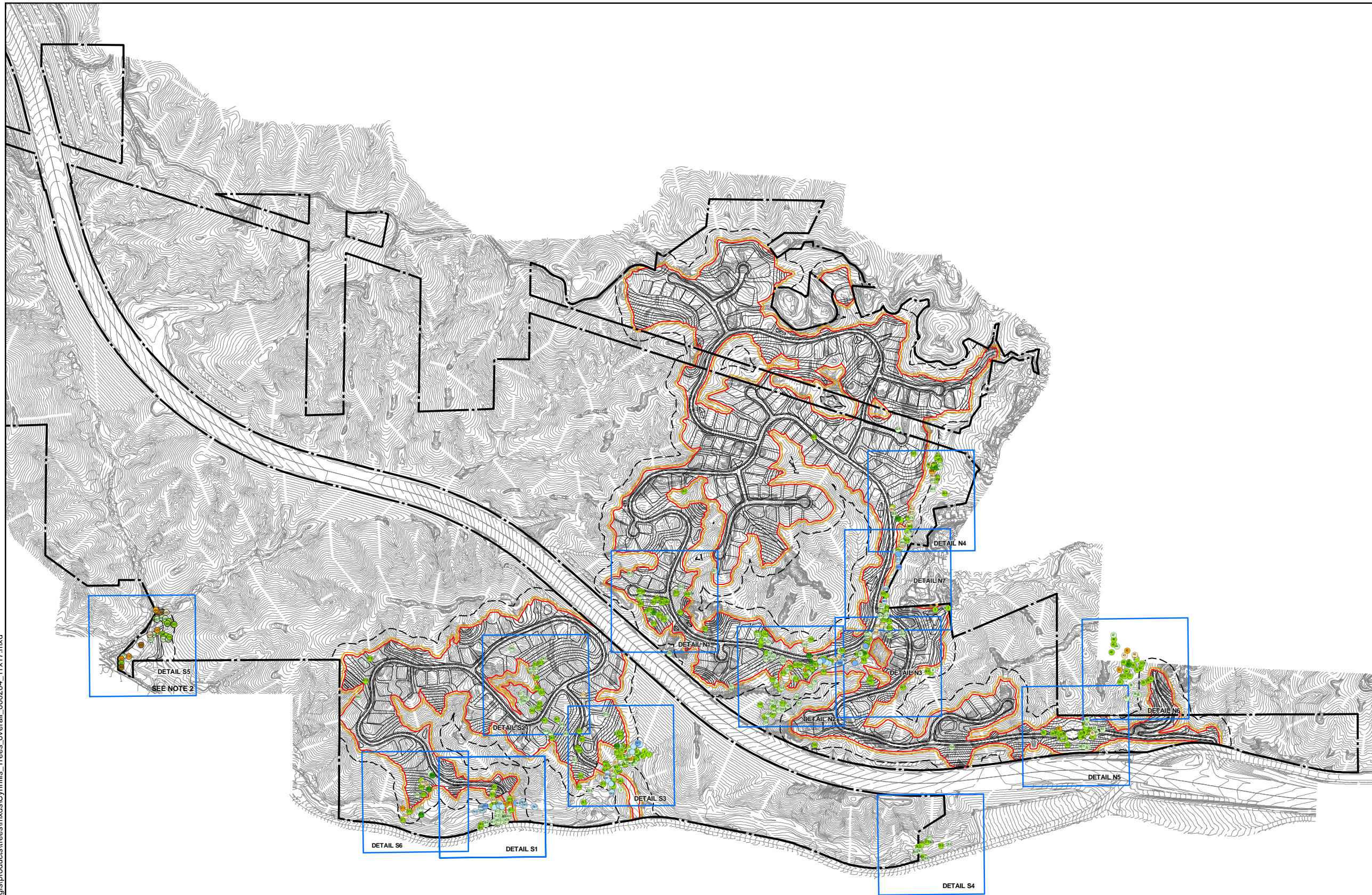


S:\clients\whitebird_850\8500108_gis\products\trees\mxd\CanyonHills_Trees_overall_060204_11x17.mxd



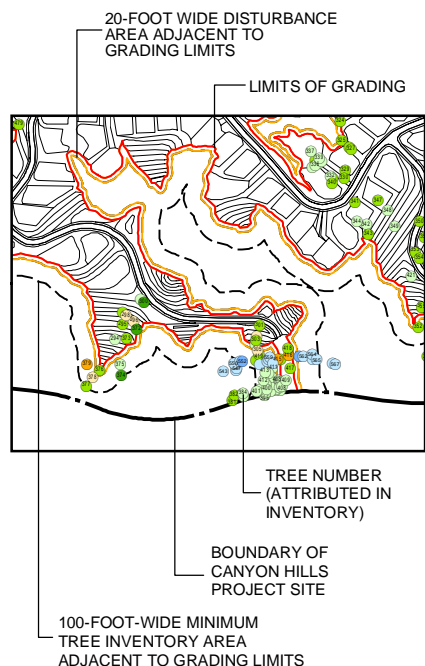
CANYON HILLS

City of Los Angeles | California

L E G E N D

- Oaks**
- 8" - 17" DBH*
 - 18" - 35" DBH*
 - ≥ 36 DBH*
- Sycamores**
- 12" - 17" DBH*
 - 18" - 35" DBH*
 - ≥ 36 DBH*
- Willows**
- 12" - 17" DBH*
 - 18" - 35" DBH*

* Trunk Diameter at Breast Height



- NOTES:**
- 1) Detail areas are shown in larger scale on the "Tree Inventory Details" sheet. This sheet provides a more readable depiction of all the trees within these areas.
 - 2) Oak and sycamore trees subject to City of Los Angeles ordinances and located within the equestrian park (north of La Tuna Canyon Road), will not be subject to removal. No Grading is proposed by the Canyon Hills project for the equestrian park.

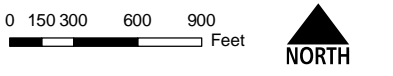


EXHIBIT 3 TREE INVENTORY

