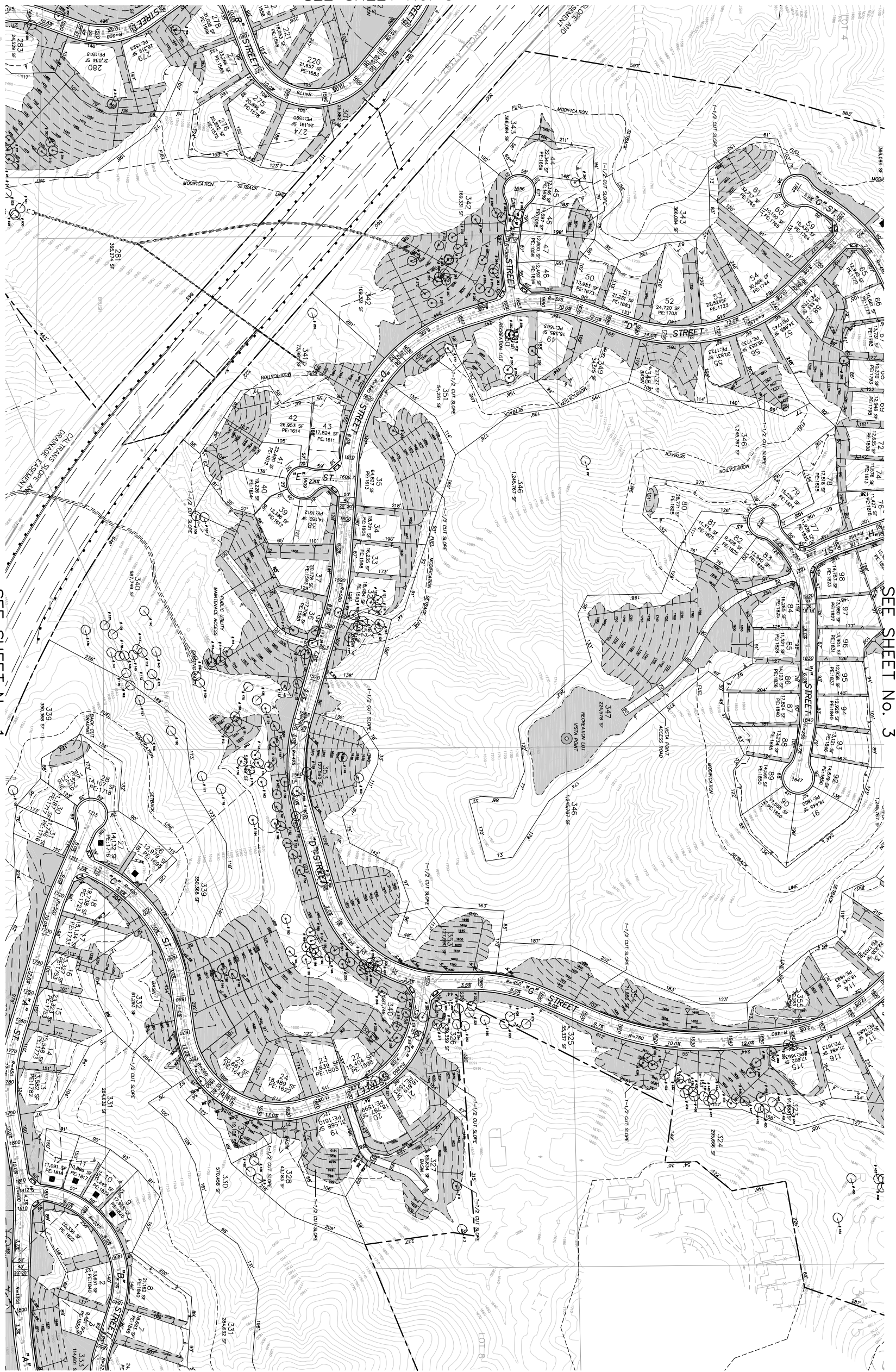


SEE SHEET No. 5

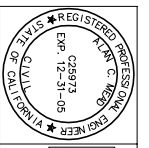
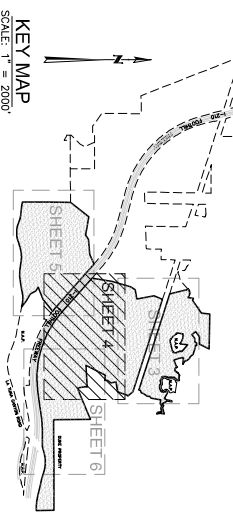
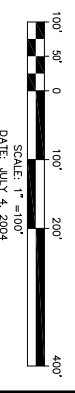
SEE SHEET No. 3

SEE SHEET No. 6

SEE SHEET No. 1



- LEGEND**
- 100 LOT NUMBER
 - TRACT BOUNDARY
 - PROPOSED STREET ROW
 - PROPOSED LOT LINES
 - PROPOSED CONTOURS
 - PROPOSED DANLIGHT LINE
 - CUSTOM LOT
 - MANUFACTURED SLOPES
 - FUEL MODIFICATION
 - SETRACK LINE
 - EXISTING EASEMENTS
 - PROPOSED BRIDGE
 - PROPOSED RETAINING WALL AND HEIGHT
 - TREES (PRESERVED)
 - TREES (IMPACTED)
 - SOUTHERN CALIFORNIA Edison PARCEL BOUNDARY



CMB
 6345 Balboa Blvd, Suite 140
 Encinitas, CA 92024
 (760) 941-5384
 (818) 543-5384

DESIGNED: O.A.
 DRAWN: O.A.
 CHECKED: F.E. & M. Employees Defined Contribution Plan Trust
 444 S. FLOWER STREET, SUITE 1300
 LOS ANGELES, CA 90071

OWNER: **WHITEBIRD, INC.**
 Doing Business in California as California Whitebird, Inc.
 444 S. FLOWER STREET, SUITE 1300
 LOS ANGELES, CA 90071

DEVELOPER: **WHITEBIRD, INC.**
 Doing Business in California as California Whitebird, Inc.
 444 S. FLOWER STREET, SUITE 1300
 LOS ANGELES, CA 90071

VESTING TENTATIVE TRACT
 MAP No. 061672
 IN THE CITY OF LOS ANGELES

PROJECT NO. 150101
 SHEET 4 OF 6

SCALE: 1" = 200'

SCALE: 1" = 100'

DATE: JULY 4, 2004