
IV. CORRECTIONS AND ADDITIONS

INTRODUCTION

This Chapter presents corrections and additions that have been made to the text of the Draft EIR. Changes in text are signified by strikeouts where text is removed and by italics where text is added, unless otherwise noted.

As provided in Section 15088(d) of the State CEQA Guidelines, responses to comments may take the form of a revision to a Draft EIR or may be a separate section in the Final EIR. This chapter complies with the latter of these two guidelines and provides changes to the Draft EIR in revision-mode text (i.e., deletions are shown with ~~strikethrough~~ and additions are shown with underline). These changes include staff-initiated text changes to provide clarifications to the project description and analysis and to correct non-substantive errors. No revisions were needed as a result of public comments. These changes do not add significant new information to the EIR, nor do they disclose or suggest new or more severe significant environmental impacts of the LAX Sign District Project.

CORRECTIONS AND ADDITIONS TO THE DRAFT EIR

Chapter II. Project Description

The following figures in Chapter II Project Description have been updated to provide clarification regarding locations proposed for Digital/Controlled Refresh I (refresh every 8 seconds, with the exception of Parking Structure 1 – East Elevation, which has a refresh of every 14 seconds), which (as described in the Draft EIR) can be used for Digital/Controlled Refresh III (refresh every 12 hours) or supergraphic signs in lieu of digital:

- Figure II-6 Parking Structure 1
- Figure II-7 Parking Structures 2A and 2B
- Figure II-8 Parking Structures 3 and 4
- Figure II-9 Parking Structures 5, 6, and 7

The revision is as follows, under the “note” annotation (bottom right corner of graphics):

Note: Locations proposed for Digital/Controlled Refresh I could be used for Digital/Controlled Refresh III or Supergraphic signs (in lieu of digital).

The following figures in Chapter II Project Description have been updated to correct errors regarding the note on Digital/Controlled Refresh III locations being used for Controlled Refresh I:

- Figure II-10 Terminals 1 and 2
- Figure II-11 Terminals 3 and TBIT

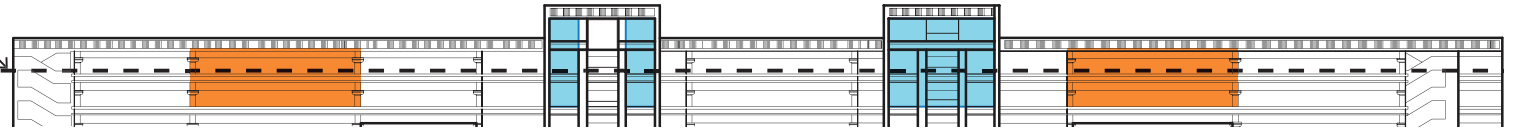
- Figure II-12 Terminals 4 and 5
- Figure II-14 Typical Sky Bridge

The revision is as follows, under the “note” annotation (bottom right corner of the graphics):

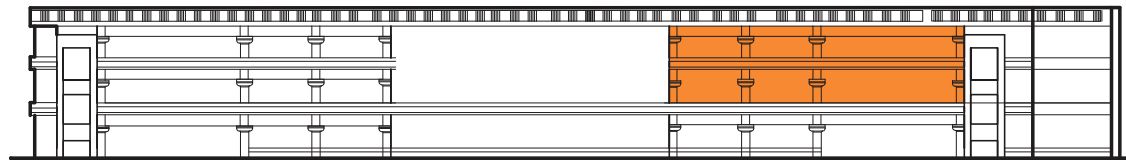
Note: Locations proposed for Digital/Controlled Refresh III could be used for ~~Controlled Refresh~~
~~For~~ Supergraphic signs in lieu of digital.

Following are the replacement figures (Figures II-6 to II-12 and Figure II-14):

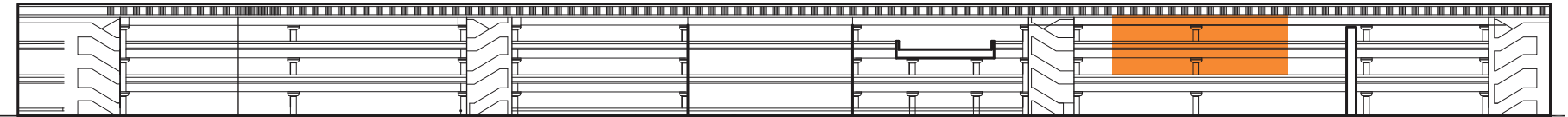
UPPER LEVEL ROADWAY
AT TERMINAL FACADE



PARKING STRUCTURE 1 - NORTH ELEVATION





PARKING STRUCTURE 1 - EAST ELEVATION



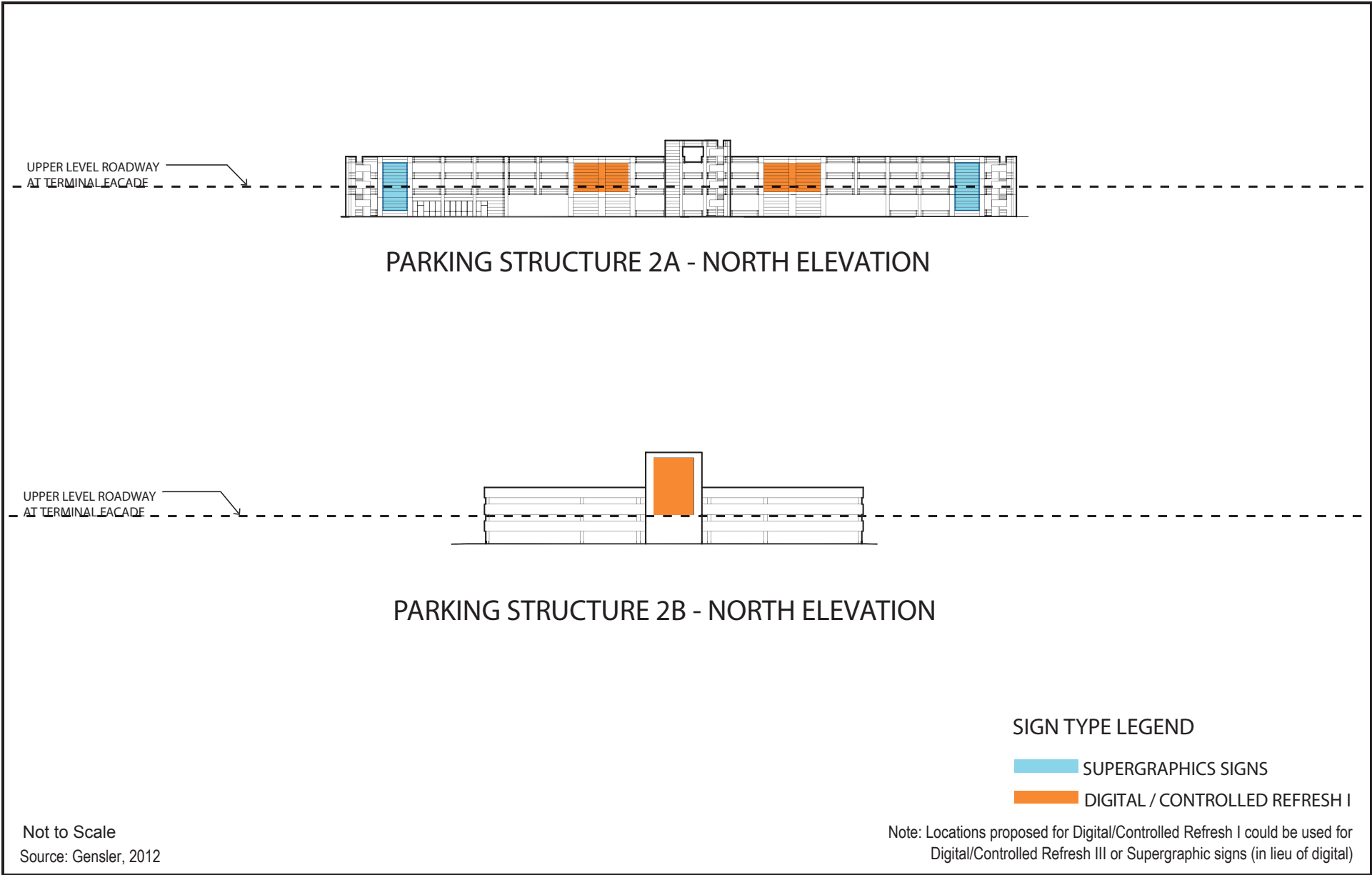
PARKING STRUCTURE 1 - SOUTH ELEVATION

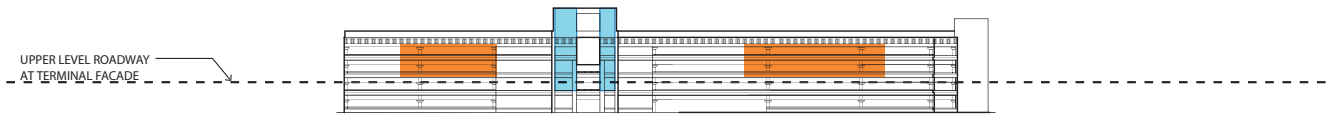
SIGN TYPE LEGEND

-  SUPERGRAPHICS SIGNS
-  DIGITAL / CONTROLLED REFRESH I

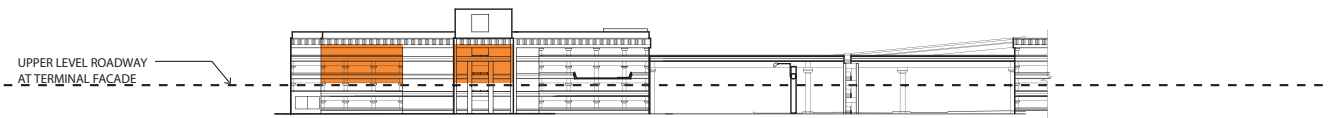
Not to Scale
Source: Gensler, 2012

Note: Locations proposed for Digital/Controlled Refresh I could be used for Digital/Controlled Refresh III or Supergraphic signs (in lieu of digital)

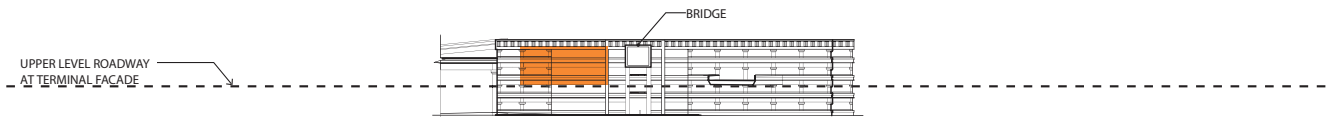




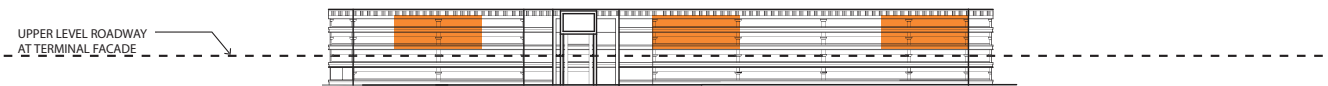
PARKING STRUCTURE 3 - NORTH ELEVATION



PARKING STRUCTURE 3 - WEST ELEVATION



PARKING STRUCTURE 4 - WEST ELEVATION



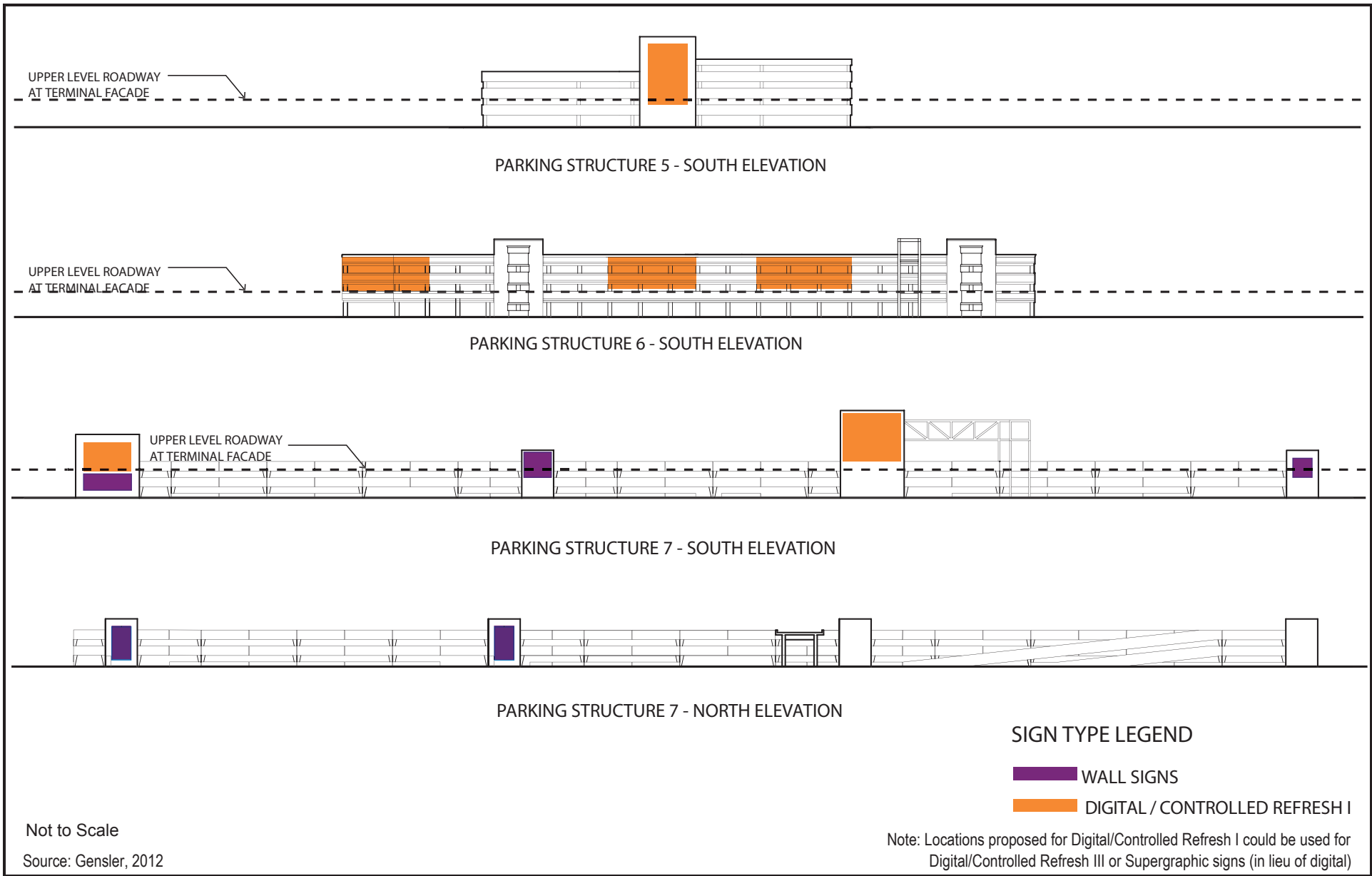
PARKING STRUCTURE 4 - SOUTH ELEVATION

SIGN TYPE LEGEND

- SUPERGRAPHICS SIGNS
- DIGITAL / CONTROLLED REFRESH I

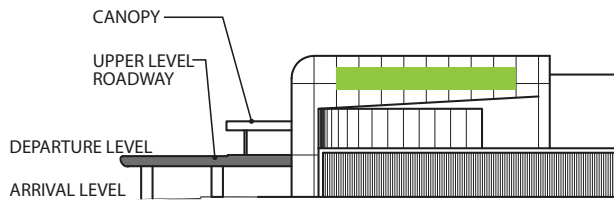
Not to Scale
Source: Gensler, 2012

Note: Locations proposed for Digital/Controlled Refresh I could be used for Digital/Controlled Refresh III or Supergraphic signs (in lieu of digital)





TERMINAL 1 - SOUTH ELEVATION



TERMINAL 1 - EAST ELEVATION



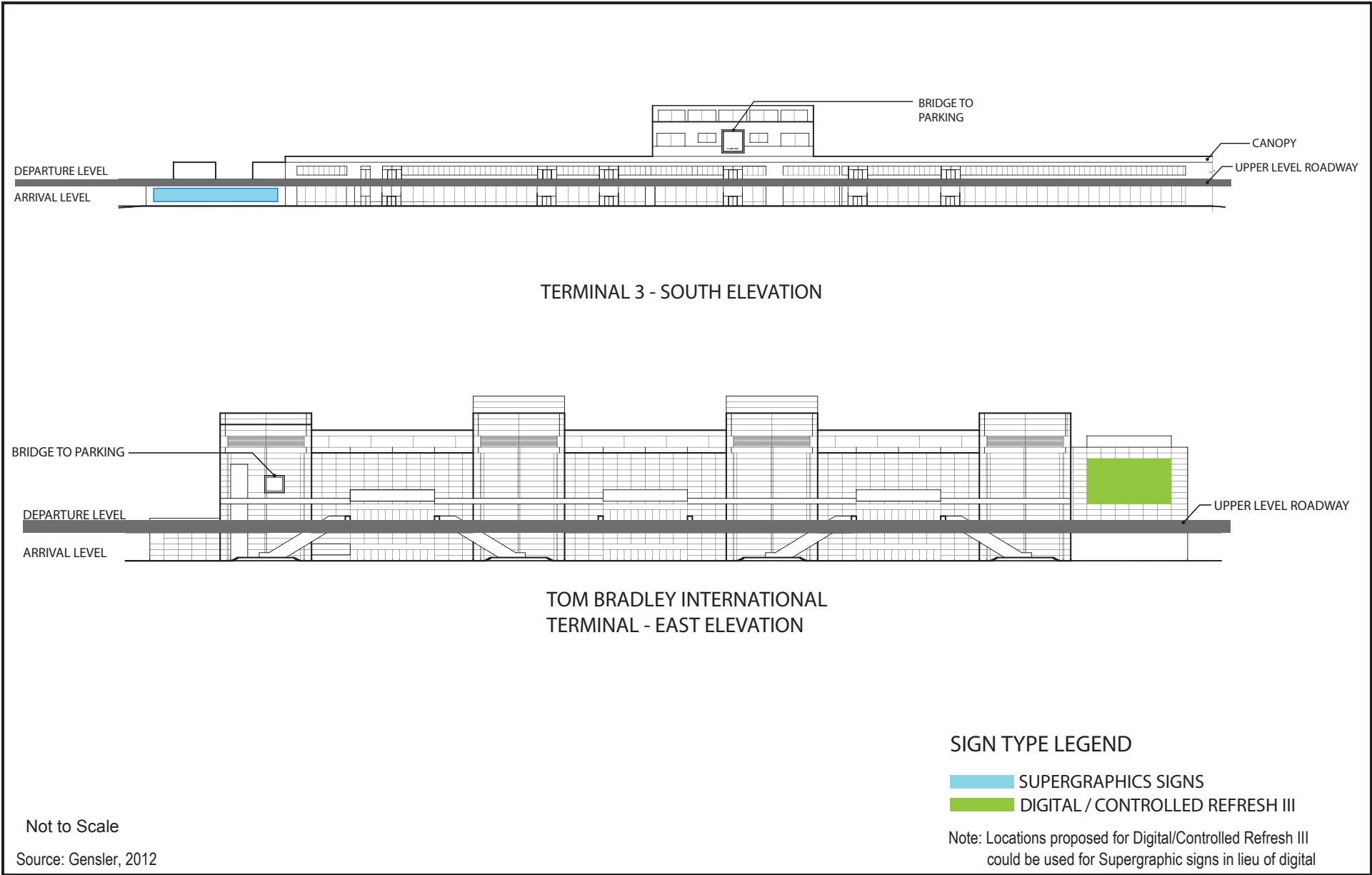
TERMINAL 2 - SOUTH ELEVATION

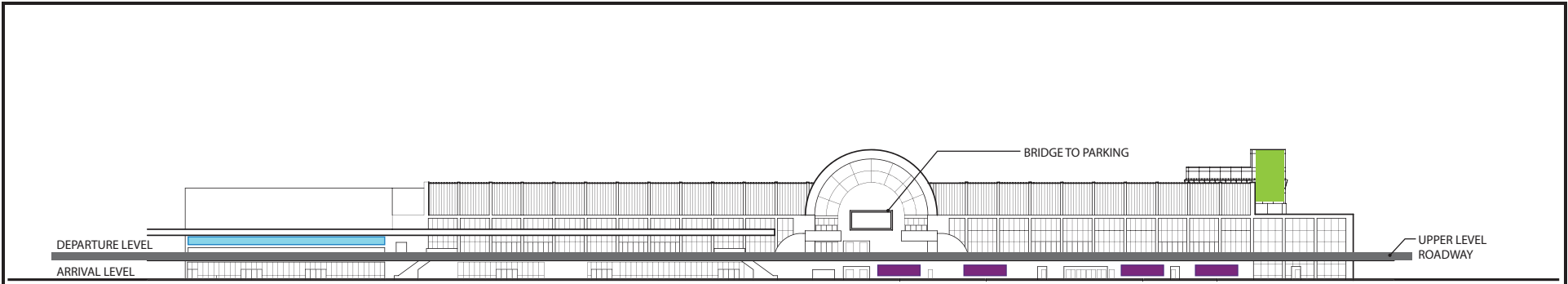
SIGN TYPE LEGEND

- WALL SIGNS
- SUPERGRAPHICS SIGNS
- DIGITAL / CONTROLLED REFRESH III

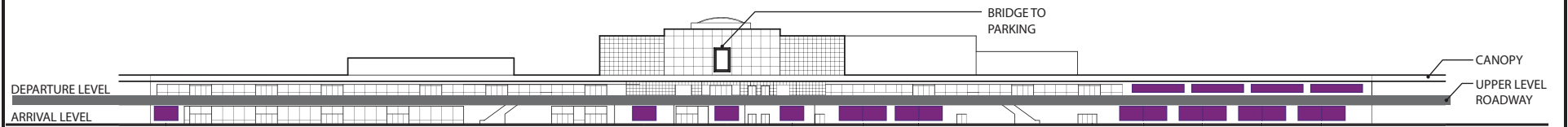
Note: Locations proposed for Digital/Controlled Refresh III could be used for Supergraphic signs in lieu of digital

Not to Scale
Source: Gensler, 2012





TERMINAL 4 - NORTH ELEVATION



TERMINAL 5 - NORTH ELEVATION

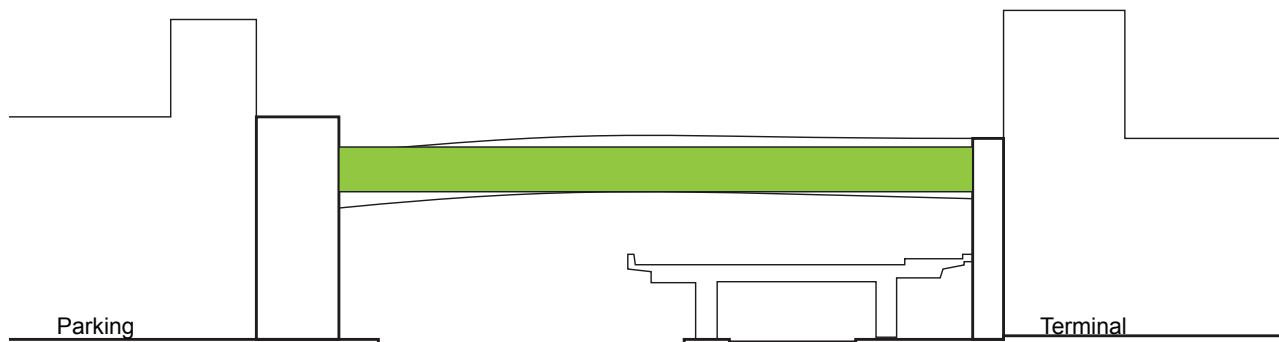
SIGN TYPE LEGEND

- WALL SIGNS
- SUPERGRAPHICS SIGNS
- DIGITAL / CONTROLLED REFRESH III

Note: Locations proposed for Digital/Controlled Refresh III could be used for Supergraphic signs in lieu of digital

Not to Scale

Source: Gensler, 2012



SIGN TYPE LEGEND

DIGITAL / CONTROLLED REFRESH III

Not to Scale
Source: Gensler, 2012

Note: Locations proposed for Digital/Controlled Refresh III
could be used for Supergraphic signs in lieu of digital