

APPENDIX J-9:

**CAMP DRESSER & MCKEE INC., “SUPPLEMENTAL
ADDENDUM TO REPORT OF SAMPLING AND
ANALYSIS OF SOIL GAS FOR METHANE PHASE 2
PORTION OF PLAYA VISTA,” CDM PROJECT
NUMBER 10610-30928.RT.RPT, JUNE 4, 2001**



June 4, 2001

Mr. David Nelson
Playa Vista
12555 West Jefferson Blvd. Ste. 300
Los Angeles, California 90066

Subject: Supplemental Addendum to Report of Sampling and
Analysis of Soil Gas for Methane
Phase 2 Portion of Playa Vista
CDM Project Number 10610-30928.RT.RPT

Dear Mr. Nelson:

This addendum supplements Camp Dresser & McKee's (CDM) *Addendum to Report of Sampling and Analysis of Soil Gas for Methane for the Phase 2 Portion of Playa Vista* dated May 8, 2001. The results of the sampling and analyses reported in this letter were developed in response to a request for additional sampling and analyses from Victor Jones of Exploration Technologies, Inc. (ETI) in a letter dated December 11, 2000 (Attachment A). Additional samples were requested to be collected as follows:

- Area A: 18 locations
- Area B: 12 locations
- Area C: 20 locations
- Area D: 69 locations

CDM observed the collection of soil gas samples from the identified locations between January 3 through 6, 2001. In accordance with soil gas testing requirements issued on October 11, 2000 by the City of Los Angeles Department of Building and Safety (LADBS) relative to the Second Phase Project EIS/EIR, sampling locations were generally spaced as shown on maps accompanying the ETI December 11, 2000 letter. Figure 1 shows the sampling locations.

1.0 Sampling and Analyses

One hundred nineteen locations were proposed for sampling. One hundred twenty samples were collected as an additional sample beyond those proposed was collected from Area A. The sampling and analyses procedures were identical to those used during the initial sampling as documented in the *Report of Sampling and Analysis of Soil Gas for Methane, Phase 2 Portion of Playa Vista* dated November 2, 2000, and also as referenced in the May 8, 2001 addendum to that report.

Mr. David Nelson
June 4, 2001
Page 2 of 4

2.0 Analyses Results

2.1 Light Hydrocarbons

The additional soil gas sample locations within Areas A and B were located in the vicinity of existing deep gas wells operated by Southern California Gas Company (SoCal Gas) at their natural gas storage facility. Sampling was conducted in the southwest portion of Area A and the northwest part of Area B near the intersection of Jefferson and Culver Boulevards. Sampling was also conducted in the southwest part of Area C between Culver Boulevard and the Ballona Channel where two wells plugged and abandoned gas wells are located. Sixty-nine locations in area D were sampled to evaluate the potential connection of two identified soil gas anomalies. The sampling was concentrated near the middle of Area D between Bluff Creek Drive and Jefferson Boulevard.

The analytical data for light hydrocarbons are provided in attached Table 1. Laboratory reported data are included in Appendix B. Shallow soil gas methane concentrations in Area A ranged from 0.88 parts per million by volume (ppmv) in sample 6091 to 4.65 ppmv in sample 6082. Ethane concentrations ranged from 0.03 ppmv in four samples to 0.21 ppmv in sample 6082. Ethylene concentrations ranged from non detect at 0.01 ppmv in four samples to 0.13 ppmv in sample 6089. Propane concentrations ranged from non detect at 0.03 ppmv at fifteen locations to 0.08 in sample 6082. Except for two detections at 0.08 and 0.10 ppmv in samples 6082 and 6089 respectively, propylene concentrations were below detection limits at 0.03 ppmv. Iso-Butane and N-Butane were not detected at 0.03 ppmv in shallow soil gas samples from Area A.

Methane in shallow soil gas samples from Area B ranged from 1.03 ppmv in sample 7079 to 15.86 ppmv in sample 7077. Ethane concentrations ranged from non detect at 0.01 ppmv in samples 7079 and 7084 to 0.10 ppmv in sample 7077. Except for detections of 0.02 and 0.03 ppmv in samples 7080 and 7081, ethylene was not present above the detection limit of 0.01 ppmv. Propane was detected in sample 7077. The remaining shallow soil gas samples collected from Area B did not contain propane, Propylene, Iso-Butane and N-Butane above the detection limit of 0.03 ppmv.

Shallow soil gas samples from Area C contained methane ranging from 0.90 ppmv in sample 8051 to 18.92 ppmv in sample 8046. Ethane was present in concentrations ranging from non detect at 0.01 ppmv in sample 8057 to 0.19 ppmv in sample 8063. Ethylene concentrations were below detection limits in four samples at 0.01 ppmv, and ranged to a high of 0.18 ppmv in sample 8063. Propane concentrations were below detection limits of 0.03 ppmv in 11 samples and ranged to a high of 0.08 ppmv in sample 8063. Except for detections of 0.05 and 0.11 ppmv in samples 8049 and 8063 respectively, propylene was not detected in other Area C samples above the detection limit of 0.03 ppmv. Iso-Butane and N-Butane were not present above detection limits of 0.03 ppmv in shallow soil gas samples from Area C.

Mr. David Nelson
June 4, 2001
Page 3 of 4

Playa Vista Area D shallow soil gas samples contained methane ranging from 0.86 ppmv in sample 9864 to 4.44 percent by volume (%V) in sample 9830. Ethane concentrations ranged from non detect at 0.01 ppmv in sample 9845 to 14.01 ppmv in sample 9832. Ethylene was not detected at 0.01 ppmv in sample 9848 and ranged to 2.24 ppmv in sample 9835. Propane was not detected at 0.03 ppmv in samples 9861 and 9863, and ranged to 8.42 ppmv in sample 9832. Propylene was not detected at 0.03 ppmv in samples 9826 and 9829, and ranged to 1.94 ppmv in sample 9812. Iso-Butane was not detected at 0.03 ppmv in 28 samples and ranged to 0.63 ppmv in sample 9848. N-Butane was not detected in 30 samples and ranged to 0.97 ppmv in sample 9848.

The results of the light hydrocarbon analysis of the additional soil gas samples in each area is consistent with previous results previously reported for the Phase 2 area within the November 2, 2000 and May 8, 2001 soil gas investigations.

2.2 Benzene, Toluene, Ethylbenzene, and Xylenes (BTEX)

Benzene, toluene, ethylbenzene, and xylene (BTEX) were analyzed in all samples. The laboratory-reporting limit for all BTEX compounds was 0.07 ppmv. The laboratory report summarizing the BTEX analytical data is provided in Appendix B.

Benzene was not detected in the shallow soil gas samples from Area A. Toluene was not detected in 10 of the samples and was present in sample 6084 at 0.14 ppmv. Ethyl benzene, M/P Xylene and ortho Xylene were not detected in the Area A samples. Benzene was not detected in shallow soil gas samples from Area B. Toluene was not detected in 10 of the Area B samples and was present at 0.15 ppmv in sample 7087. Ethyl benzene, M/P-xylene and ortho-xylene were not detected in Area B samples. BTEX compounds were not detected in shallow soil gas samples from Area C. Benzene was not detected in shallow soil gas samples from Area D. Toluene was detected in 19 of the area D samples with a high of 6.40 ppmv in sample 9855. Ethyl benzene was detected in two Area D samples at 0.09 ppmv and 0.19 ppmv in samples 9849 and 9855 respectively. M/P-xylene was detected in 6 Area D samples with a maximum of 2.60 ppmv in sample 9855. Ortho-xylene was detected in 7 Area D samples with a maximum of 1.10 ppmv in sample 9855.

The results of the BTEX analysis for each of the Areas is consistent with the data reported for the Phase 2 area.

2.3 Hydrogen Sulfide

Hydrogen sulfide concentrations were measured using a Jerome 631-X hydrogen sulfide analyzer. The results of the measurements are summarized on Table 2. The instrument detection range is between 0.003 ppmv and 50 ppmv. The instrument can report concentrations at 0.001 ppmv and 0.002 ppmv, however, according to the manufacturer, these concentrations are below the range of instrument accuracy. The Jerome 631-X

Mr. David Nelson
June 4, 2001
Page 4 of 4

measured hydrogen sulfide concentrations in some Playa Vista shallow soil gas samples at 0.001 ppmv and 0.002 ppmv. These concentrations are considered estimated.

With the exception of one soil gas point (location 6089) within Area A, hydrogen sulfide was not detected above the lower instrument detection limit of 0.003 ppmv. Location 6089 was reported with 0.014 ppmv. A total of 24 of the 69 soil gas samples collected within Area D contained concentrations of hydrogen sulfide ranging from 0.003 to 0.024 ppmv. The hydrogen sulfide results are consistent with those data previously reported for the Phase 2 area.

During the November 2000 soil gas sampling event presented within the May 8, 2001, Addendum to Report of Sampling and Analysis of Soil Gas for Methane, Phase 2 Portion of Playa Vista, location 9735 had a hydrogen sulfide concentration of >50 ppmv. This location was resampled during this event and hydrogen sulfide was not detected above the instrument detection limit of 0.003 ppmv.

Should you have any questions regarding the testing results summarized above or the attached supporting data, please contact either of us at (949) 752-5452.

Sincerely,

CAMP DRESSER & MCKEE INC.



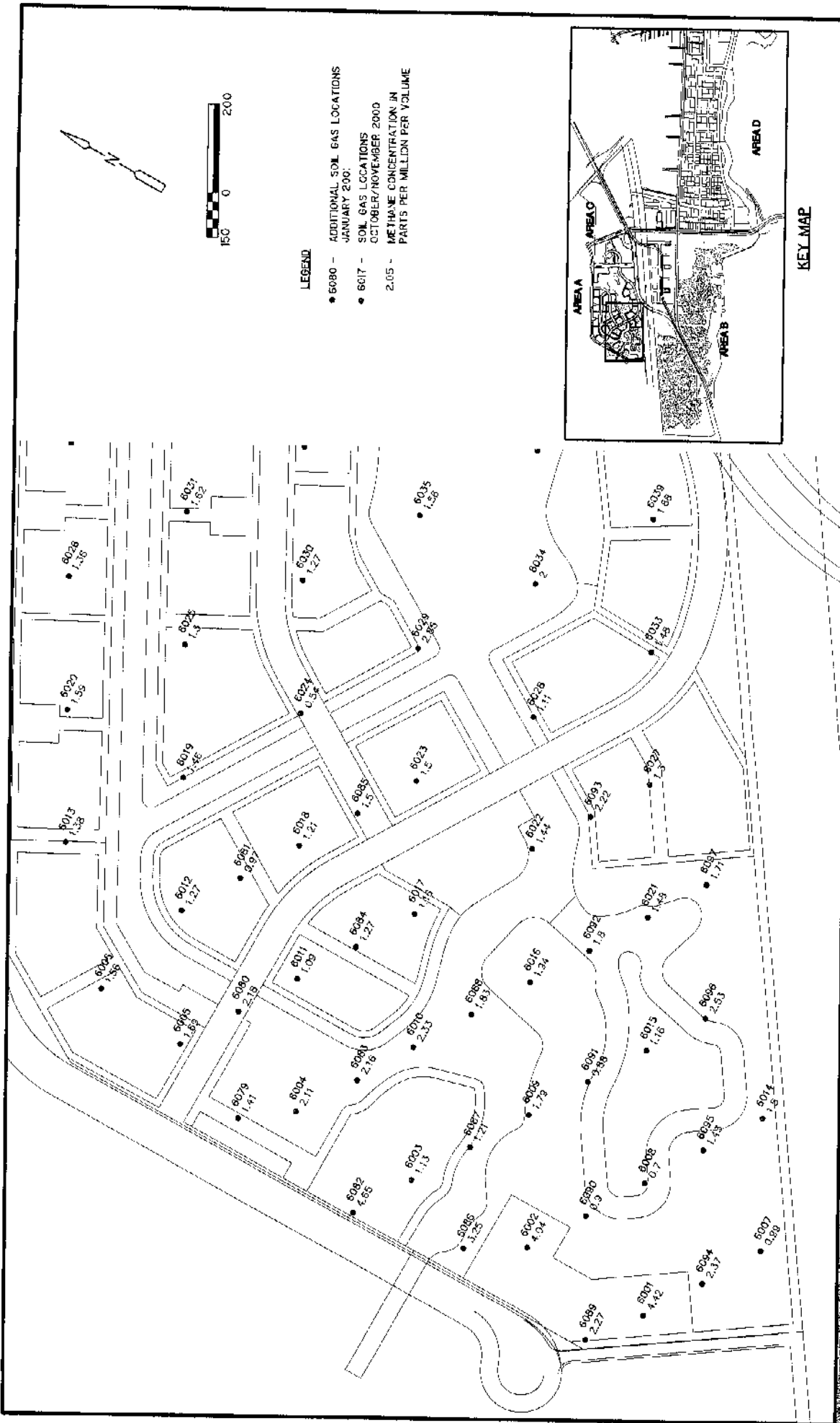
Michele Zych, R.G.
Project Manager



Mackey Smith
Vice President

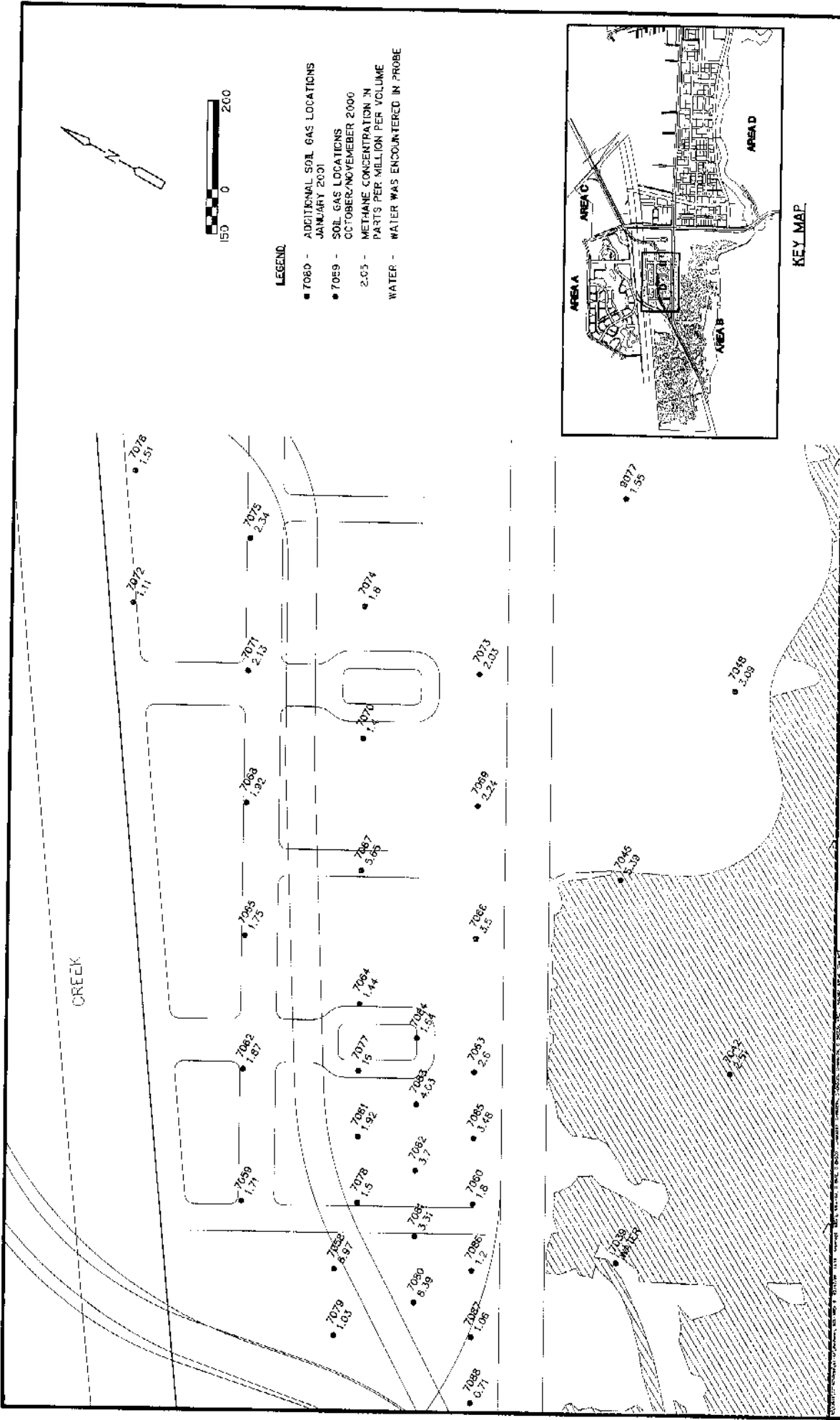
cc: Ms. Maria Hoyer, Latham & Watkins

Attachment A - December 11, 2000 Letter to Los Angeles Department of Building and
Safety for Additional Soil Gas Sites from ETI
Attachment B - Laboratory Reports and Chain-of-Custody Forms



PLAYA VISTA

Figure 1



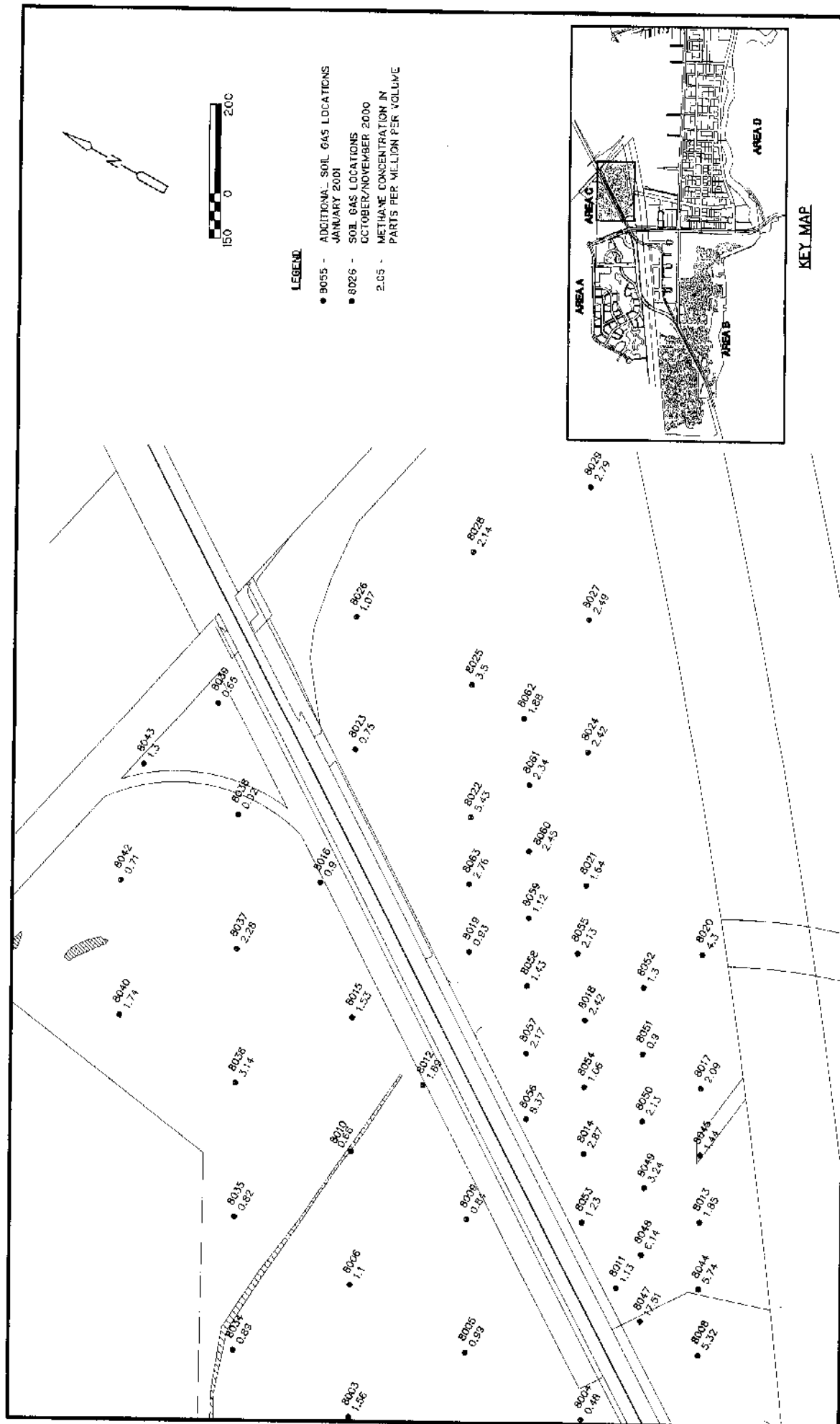
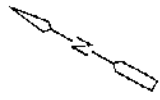
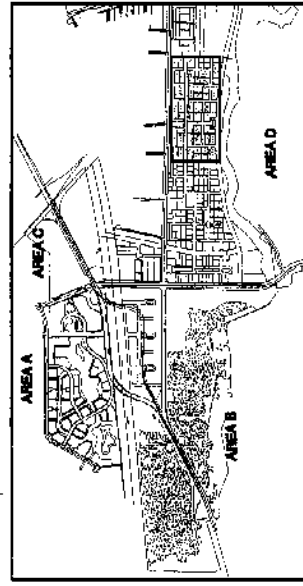


Figure 3



LEGEND

- 9798 - ADDITIONAL SOIL GAS LOCATIONS
JANUARY 2001
- 9716 - SOIL GAS LOCATIONS
OCTOBER/NOVEMBER 2000
- 2.05 - METHANE CONCENTRATION IN
PARTS PER MILLION PER VOLUME



KEY MAP

PLAYA VISTA

**Soil Gas Sampling Locations
Area D**

FIG. NO. 2



Exploration Technologies, Inc.

3698 Westchase Dr., Houston, TX 77042

Tel: (713) 785-0393, Fax: (713) 785-1550

E-mail: etimail@eti-geochemistry.com

<http://www.eti-geochemistry.com>

December 11, 2000

Mr. David Hsu
Chief, Grading Section
City of Los Angeles
Dept. of Building and Safety
201 North Figueroa Street
Los Angeles, CA 90012-2827

Dear David:

ADDITIONAL SOIL GAS SITES PHASE II AREA, PLAYA VISTA DEVELOPMENT

We have reviewed the initial soil gas data for the Phase II Playa Vista surveys and suggest that the following additional infill locations need to be added for due diligence.

Authority for requesting these additional sites was outlined in the October 11, 2000 letter from Ray Chan to David Nelson concerning soil gas sampling protocol with respect to sample spacing and additional soil gas sampling in various areas of the Phase II Area.

Fifty additional soil gas sites are requested in the following areas of the Phase II Area, as covered in item 1b of the subject letter (50 random soil gas sites). These are:

- 1) Eighteen additional sites in the west end of Area A (see Figure 1).
- 2) Twelve additional sites in the north central part of Area B (see Figure 1).
- 3) Twenty additional sites in the south central part of Area C (see Figure 1).

Sixty-nine additional soil gas sites are requested in Area D, as covered in item 1c of the subject letter. Proposed site locations for these 69 additional soil gas sites are shown on Figure 2. Two significant methane anomalies have been found in this area. These additional sites are required to investigate the possibility that the two anomalous methane areas are connected.

If you have any questions or require additional information, please contact me.

Sincerely,
Exploration Technologies, Inc.

Victor T. Jones, III, Ph.D.
Peer Reviewer for LADBS
President, Exploration Technologies, Inc.

Attachment A
December 11, 2000 Letter to Los Angeles Department of
Building and Safety for Additional Soil Gas Sites from ETI

Table 2
Summary of Analytical Results
Hydrogen Sulfide - Soil Gas Samples
Playa Vista, Los Angeles, CA

Sample Names	Date Sampled	H ₂ S Concentration (ppmv)
<u>DETECTION LIMITS</u>		<u>0.003</u>

ppmv = parts per million volume

Table 2
 Summary of Analytical Results
 Hydrogen Sulfide - Soil Gas Samples
 Playa Vista, Los Angeles, CA

Sample Names	Date Sampled	H ₂ S Concentration (ppmv)
9801	1/5/01	0.004
9802	1/5/01	0.001
9803	1/5/01	0.001
9804	1/5/01	0.013
9805	1/5/01	0.009
9806	1/5/01	0.006
9807	1/5/01	0.001
9808	1/5/01	0.000
9809	1/5/01	0.009
9810	1/5/01	0.004
9811	1/5/01	0.000
9812	1/5/01	0.000
9813	1/5/01	0.002
9814	1/4/01	0.008
9815	1/4/01	0.000
9816	1/4/01	0.000
9817	1/4/01	0.005
9818	1/5/01	0.024, 0.021
9819	1/5/01	0.006
9820	1/5/01	0.003
9821	1/5/01	0.002
9822	1/5/01	0.011
9823	1/5/01	0.000
9824	1/5/01	0.000
9825	1/5/01	0.007
9826	1/5/01	0.003
9827	1/5/01	0.015
9828	1/5/01	0.004
9829	1/5/01	0.002, 0.001
9830	1/4/01	0.002
9831	1/4/01	0.002
9832	1/5/01	0.013, 0.018
9833	1/5/01	0.002
9834	1/5/01	0.001
9835	1/5/01	0.001
9836	1/5/01	0.001
9837	1/5/01	0.000
9838	1/5/01	0.002
9839	1/5/01	0.001
9840	1/5/01	0.000
9841	1/6/01	0.000
9842	1/6/01	0.002
9843	1/6/01	0.005
9844	1/6/01	0.002
9845	1/6/01	0.003
9846	1/6/01	0.001
9847	1/6/01	0.002
9848	1/6/01	0.000
9849	1/6/01	0.002
9850	1/6/01	0.000
9851	1/6/01	0.001
9852	1/6/01	0.003
9853	1/6/01	0.000
9854	1/6/01	0.000
9855	1/6/01	0.002
9856	1/6/01	0.003
9857	1/6/01	0.024, 0.026
9858	1/6/01	0.000
9859	1/6/01	0.000
9860	1/6/01	0.000
9861	1/6/01	0.000
9862	1/6/01	0.002
9863	1/6/01	0.000
9864	1/6/01	0.000
9865	1/6/01	0.000
9866	1/6/01	0.003

Table 2
Summary of Analytical Results
Hydrogen Sulfide - Soil Gas Samples
Playa Vista, Los Angeles, CA

Sample Names	Date Sampled	H ₂ S Concentration (ppmv)
AREA A		
6079	1/3/01	0.000
6080	1/3/01	0.000
6081	1/3/01	0.000
6082	1/3/01	0.000
6083	1/3/01	0.000
6084	1/3/01	0.000
6085	1/3/01	0.000
6086	1/3/01	0.000
6087	1/3/01	0.000
6088	1/3/01	0.000
6089	1/3/01	0.014
6090	1/3/01	0.000
6091	1/3/01	0.000
6092	1/3/01	0.001
6093	1/3/01	0.001
6094	1/3/01	0.001
6095	1/3/01	0.001
6096	1/3/01	0.001
6097	1/3/01	0.000
AREA B		
7077	1/4/01	0.000
7078	1/4/01	0.000
7079	1/3/01	0.000
7080	1/3/01	0.000
7081	1/3/01	0.000
7082	1/4/01	0.000
7083	1/4/01	0.000
7084	1/4/01	0.000
7085	1/4/01	0.000
7086	1/3/01	0.000
7087	1/3/01	0.000
7088	1/3/01	0.000
AREA C		
8044	1/4/01	0.001
8045	1/4/01	0.000
8046	1/4/01	0.000
8047	1/4/01	0.000
8048	1/4/01	0.000
8049	1/4/01	0.000
8050	1/4/01	0.000
8051	1/4/01	0.001
8052	1/4/01	0.000
8053	1/4/01	0.001
8054	1/4/01	0.000
8055	1/4/01	0.000
8056	1/4/01	0.001
8057	1/4/01	0.000
8058	1/4/01	0.002
8059	1/4/01	0.000
8060	1/4/01	0.000
8061	1/4/01	0.000
8062	1/4/01	0.000
8063	1/4/01	0.001
AREA D		
9798	1/5/01	0.001
9799	1/5/01	0.006
9800	1/5/01	0.002

Table 1
Summary of Analytical Results
Light Hydrocarbons (C1-C4) - Soil Gas Samples
Playa Vista, Los Angeles, CA

Sample Names	Date Sampled	Methane (%V)	Methane (ppmv)	Ethane (ppmv)	Ethylene (ppmv)	Propane (ppmv)	Propylene (ppmv)	Iso-Butane (ppmv)	N-Butane (ppmv)
9863	1/6/01	*	0.93	0.05	0.04	<0.03	0.03	<0.03	<0.03
9864	1/6/01	*	0.86	0.12	0.10	0.04	0.10	<0.03	<0.03
9865	1/6/01	*	3.13	0.20	0.05	0.09	0.05	0.05	0.04
9866	1/6/01	*	2.59	0.10	0.07	0.04	0.06	0.04	<0.03
DETECTION LIMITS		0.02	0.01	0.01	0.01	0.03	0.03	0.03	0.03

ppmv = parts per million volume

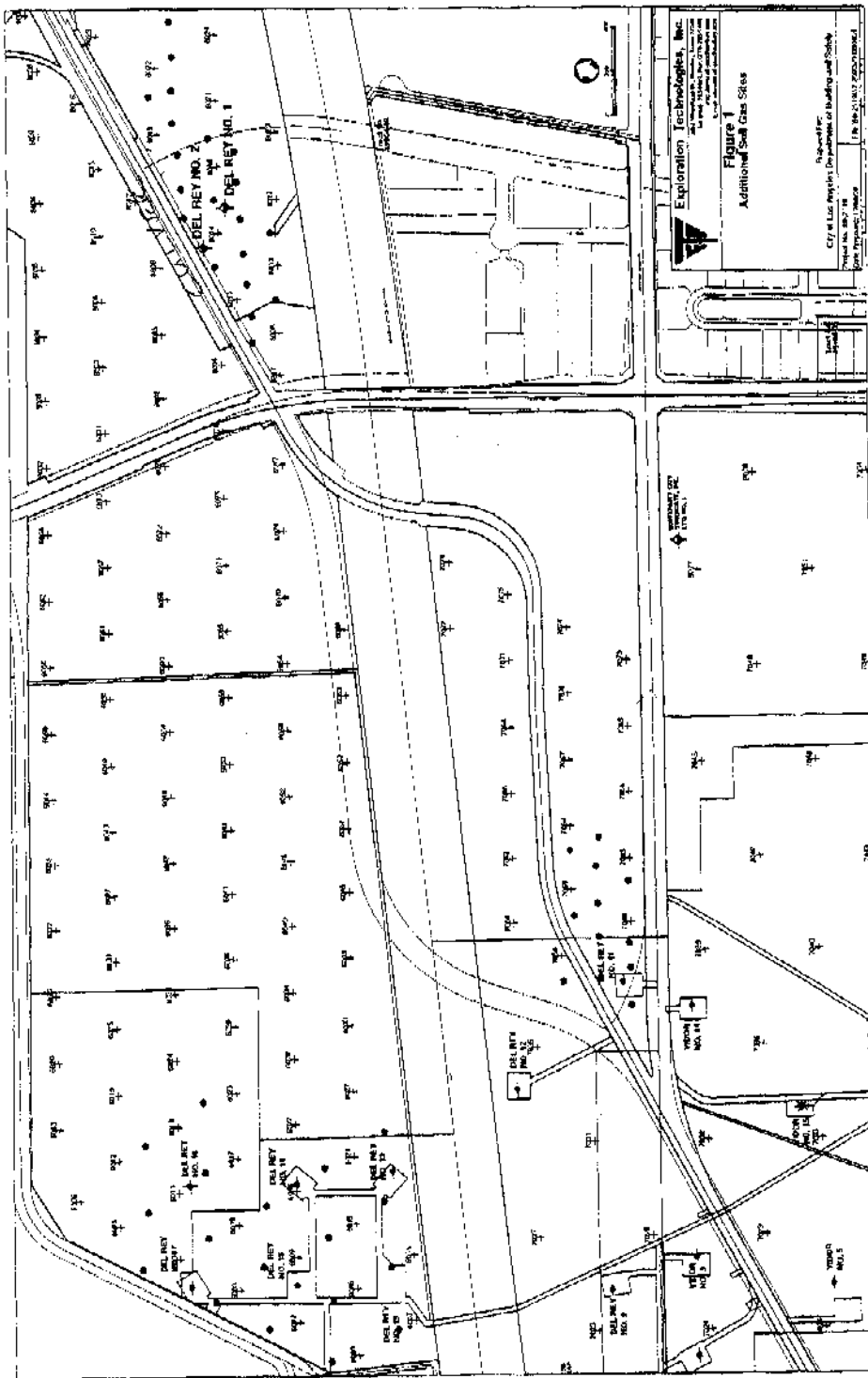
* METHANE RESULT TAKEN FROM ALTERNATE DETECTOR

Table 1
Summary of Analytical Results
Light Hydrocarbons (C1-C4) - Soil Gas Samples
Playa Vista, Los Angeles, CA

Sample Names	Date Sampled	Methane (%V)	Methane (ppmv)	Ethane (ppmv)	Ethylene (ppmv)	Propane (ppmv)	Propylene (ppmv)	Iso-Butane (ppmv)	N-Butane (ppmv)
9799	1/5/01	-	7.37	0.47	0.35	0.10	0.29	< 0.03	< 0.03
9800	1/5/01	-	8.31	0.31	0.24	0.14	0.20	< 0.03	< 0.03
9801	1/5/01	-	3.79	0.23	0.10	0.09	0.16	< 0.03	< 0.03
9802	1/5/01	-	6.40	0.34	0.16	0.16	0.13	< 0.03	< 0.03
9803	1/5/01	-	4.84	0.87	0.89	0.37	0.80	< 0.03	0.08
9804	1/5/01	-	26.87	1.07	0.60	0.48	0.45	0.10	0.17
9805	1/5/01	-	41.47	1.37	0.99	0.62	0.75	0.11	0.19
9806	1/5/01	-	5.75	0.33	0.22	0.15	0.17	< 0.03	< 0.03
9807	1/5/01	-	6.62	0.18	0.14	0.07	0.09	< 0.03	< 0.03
9808	1/5/01	-	3.67	0.14	0.10	0.05	0.07	< 0.03	< 0.03
9809	1/5/01	-	12.96	1.08	0.51	0.46	0.40	0.07	0.15
9810	1/5/01	-	980.8	0.51	0.37	0.24	0.26	< 0.03	< 0.03
9811	1/5/01	-	7.91	0.72	0.33	0.24	0.21	< 0.03	< 0.03
9812	1/5/01	-	10.25	1.66	2.03	0.61	1.94	0.04	0.13
9813	1/5/01	-	3.73	0.16	0.18	0.06	0.08	< 0.03	< 0.03
9814	1/4/01	-	5.62	0.37	0.34	0.14	0.23	< 0.03	< 0.03
9815	1/4/01	-	13.53	0.63	0.22	0.32	0.18	0.07	0.06
9816	1/4/01	0.98	-	3.86	0.29	2.22	0.22	0.33	0.61
9817	1/4/01	-	367.3	0.67	0.41	0.47	0.34	0.06	0.10
9818	1/5/01	-	277.8	1.22	0.63	0.54	0.49	0.11	0.18
9819	1/5/01	-	44.85	0.48	0.29	0.22	0.21	< 0.03	< 0.03
9820	1/5/01	-	204.4	0.21	0.11	0.10	0.08	< 0.03	< 0.03
9821	1/5/01	-	258.3	0.35	0.13	0.17	0.11	< 0.03	< 0.03
9822	1/5/01	-	7.86	0.87	0.44	0.37	0.33	0.05	0.12
9823	1/5/01	-	8.96	0.41	0.18	0.19	0.14	< 0.03	< 0.03
9824	1/5/01	-	668.3	0.50	0.14	0.30	0.07	0.07	0.10
9825	1/5/01	-	4.58	0.44	0.26	0.19	0.26	< 0.03	< 0.03
9826	1/5/01	-	3.18	0.24	0.07	0.11	< 0.03	< 0.03	< 0.03
9827	1/5/01	-	5.89	0.48	0.24	0.24	0.20	< 0.03	< 0.03
9828	1/5/01	-	5.86	0.30	0.17	0.19	0.14	< 0.03	< 0.03
9829	1/5/01	-	5.25	0.30	0.07	0.17	< 0.03	< 0.03	< 0.03
9830	1/4/01	4.44	-	0.71	0.28	0.73	0.21	0.11	0.21
9831	1/4/01	0.10	-	2.17	0.92	1.40	0.68	0.24	0.28
9832	1/5/01	-	919.2	14.01	1.08	8.42	0.93	0.12	0.26
9833	1/5/01	-	8.46	0.88	0.60	0.33	0.50	0.06	0.10
9834	1/5/01	-	8.20	0.68	0.39	0.27	0.29	< 0.03	0.07
9835	1/5/01	-	14.36	1.63	2.24	0.57	1.40	0.06	0.13
9836	1/5/01	-	10.02	1.01	1.32	0.40	0.93	0.07	0.12
9837	1/5/01	-	6.54	0.41	0.18	0.25	0.13	0.08	0.08
9838	1/5/01	-	35.89	1.03	0.43	0.88	0.35	0.12	0.40
9839	1/5/01	-	6.23	0.65	0.37	0.30	0.34	0.05	0.09
9840	1/5/01	-	1.13	0.09	0.07	0.04	0.04	< 0.03	< 0.03
9841	1/6/01	-	15.62	0.56	0.16	0.42	0.12	0.16	0.23
9842	1/6/01	-	6.38	0.75	0.98	0.31	0.73	0.09	0.09
9843	1/6/01	-	178.9	0.22	0.11	0.16	0.10	0.12	0.08
9844	1/6/01	-	4.19	0.60	1.11	0.25	0.88	0.07	0.09
9845	1/6/01	2.21	-	< 0.01	0.24	0.32	0.14	0.06	0.08
9846	1/6/01	-	278.3	0.29	0.21	0.13	0.17	0.07	0.05
9847	1/6/01	-	99.21	0.42	0.61	0.18	0.49	0.07	0.08
9848	1/6/01	6.68	-	7.89	< 0.01	4.77	0.18	0.03	0.97
9849	1/6/01	-	49.55	0.47	0.16	0.16	0.11	0.06	0.04
9850	1/6/01	-	7.83	0.26	0.22	0.09	0.16	0.04	0.06
9851	1/6/01	-	6.54	0.14	0.10	0.04	0.08	0.03	0.03
9852	1/6/01	-	5.62	0.22	0.08	0.08	0.06	0.04	0.04
9853	1/6/01	-	2.62	0.08	0.05	0.03	0.04	0.03	< 0.03
9854	1/6/01	-	1.25	0.08	0.09	0.03	0.05	< 0.03	< 0.03
9855	1/6/01	-	154.9	1.70	0.09	0.72	0.08	0.23	0.14
9856	1/6/01	-	10.64	0.47	0.38	0.18	0.30	0.13	0.08
9857	1/6/01	-	53.34	2.15	0.64	1.54	0.64	0.40	0.40
9858	1/6/01	-	3.24	0.17	0.10	0.07	0.07	0.03	< 0.03
9859	1/6/01	-	4.23	0.18	0.07	0.06	0.05	0.05	< 0.03
9860	1/6/01	-	4.23	0.15	0.12	0.04	0.07	0.04	0.05
9861	1/6/01	-	1.63	0.07	0.09	< 0.03	0.07	< 0.03	< 0.03
9862	1/6/01	-	5.63	0.69	0.71	0.25	0.57	0.12	0.09

Table 1
Summary of Analytical Results
Light Hydrocarbons (C1-C4) - Soil Gas Samples
Plyra Vista, Los Angeles, CA

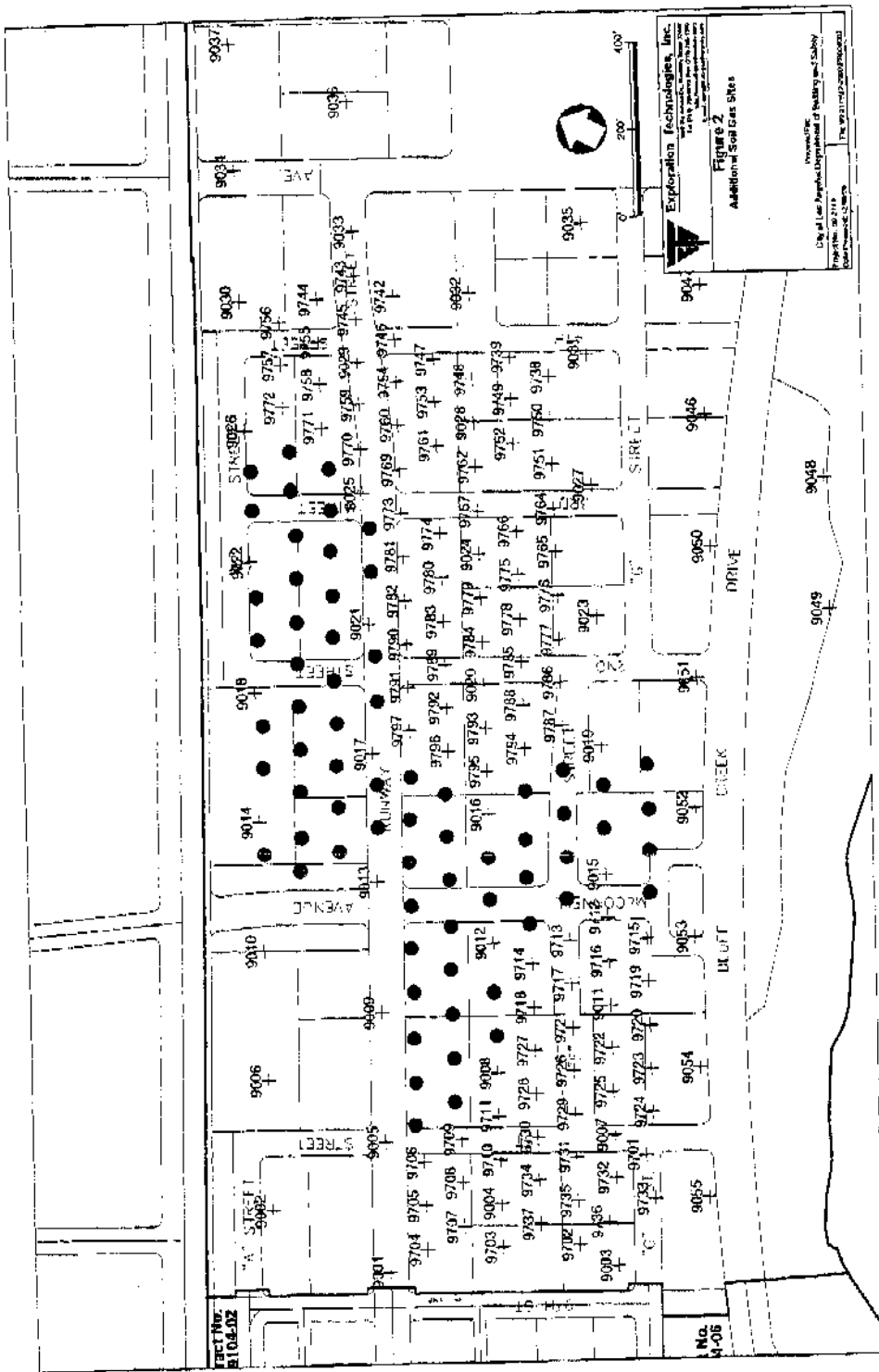
Sample Names	Date Sampled	Methane (%V)	Methane (ppmv)	Ethane (ppmv)	Ethylene (ppmv)	Propane (ppmv)	Propylene (ppmv)	Iso-Butane (ppmv)	N-Butane (ppmv)
AREA A									
6079	1/3/01	*	1.41	0.04	0.03	< 0.03	< 0.03	< 0.03	< 0.03
6080	1/3/01	*	2.18	0.06	0.05	< 0.03	< 0.03	< 0.03	< 0.03
6081	1/3/01	*	0.97	0.03	0.03	< 0.03	< 0.03	< 0.03	< 0.03
6082	1/3/01	*	4.65	0.21	0.12	0.08	0.06	< 0.03	< 0.03
6083	1/3/01	*	2.16	0.06	0.04	< 0.03	< 0.03	< 0.03	< 0.03
6084	1/3/01	*	1.27	0.02	< 0.01	< 0.03	< 0.03	< 0.03	< 0.03
6085	1/3/01	*	1.50	0.03	< 0.01	< 0.03	< 0.03	< 0.03	< 0.03
6086	1/3/01	*	3.25	0.09	0.05	0.04	< 0.03	< 0.03	< 0.03
6087	1/3/01	*	1.21	0.06	0.04	< 0.03	< 0.03	< 0.03	< 0.03
6088	1/3/01	*	1.83	0.08	0.07	0.03	< 0.03	< 0.03	< 0.03
6089	1/3/01	*	2.27	0.15	0.13	0.06	0.10	< 0.03	< 0.03
6090	1/3/01	*	0.90	0.04	0.02	< 0.03	< 0.03	< 0.03	< 0.03
6091	1/3/01	*	0.88	0.03	< 0.01	< 0.03	< 0.03	< 0.03	< 0.03
6092	1/3/01	*	1.80	0.05	0.02	< 0.03	< 0.03	< 0.03	< 0.03
6093	1/3/01	*	2.22	0.04	0.02	< 0.03	< 0.03	< 0.03	< 0.03
6094	1/3/01	*	2.37	0.07	0.05	< 0.03	< 0.03	< 0.03	< 0.03
6095	1/3/01	*	1.43	0.07	0.04	< 0.03	< 0.03	< 0.03	< 0.03
6096	1/3/01	*	2.53	0.05	0.02	< 0.03	< 0.03	< 0.03	< 0.03
6097	1/3/01	*	1.71	0.03	< 0.01	< 0.03	< 0.03	< 0.03	< 0.03
AREA B									
7077	1/4/01	*	16.00	0.10	< 0.01	< 0.03	< 0.03	< 0.03	< 0.03
7078	1/4/01	*	1.50	0.04	< 0.01	< 0.03	< 0.03	< 0.03	< 0.03
7079	1/3/01	*	1.03	< 0.01	< 0.01	< 0.03	< 0.03	< 0.03	< 0.03
7080	1/3/01	*	8.39	0.04	0.03	< 0.03	< 0.03	< 0.03	< 0.03
7081	1/3/01	*	3.31	0.07	0.02	< 0.03	< 0.03	< 0.03	< 0.03
7082	1/4/01	*	3.70	0.06	< 0.01	< 0.03	< 0.03	< 0.03	< 0.03
7083	1/4/01	*	4.03	0.06	< 0.01	< 0.03	< 0.03	< 0.03	< 0.03
7084	1/4/01	*	1.64	< 0.01	< 0.01	< 0.03	< 0.03	< 0.03	< 0.03
7085	1/4/01	*	3.48	0.03	< 0.01	< 0.03	< 0.03	< 0.03	< 0.03
7086	1/3/01	*	1.20	0.02	< 0.01	< 0.03	< 0.03	< 0.03	< 0.03
7087	1/3/01	*	1.06	0.03	< 0.01	< 0.03	< 0.03	< 0.03	< 0.03
7088	1/3/01	*	0.71	0.02	< 0.01	< 0.03	< 0.03	< 0.03	< 0.03
AREA C									
8044	1/4/01	*	2.30	0.14	0.04	0.05	< 0.03	< 0.03	< 0.03
8045	1/4/01	*	1.44	0.06	0.04	0.02	< 0.03	< 0.03	< 0.03
8046	1/4/01	*	18.92	0.12	0.02	< 0.03	< 0.03	< 0.03	< 0.03
8047	1/4/01	*	17.51	0.10	0.04	0.02	< 0.03	< 0.03	< 0.03
8048	1/4/01	*	6.14	0.11	0.03	0.04	< 0.03	< 0.03	< 0.03
8049	1/4/01	*	3.24	0.10	0.09	0.05	< 0.03	< 0.03	< 0.03
8050	1/4/01	*	2.13	0.03	< 0.01	< 0.03	< 0.03	< 0.03	< 0.03
8051	1/4/01	*	0.90	0.04	0.05	< 0.03	< 0.03	< 0.03	< 0.03
8052	1/4/01	*	1.30	0.02	0.02	< 0.03	< 0.03	< 0.03	< 0.03
8053	1/4/01	*	1.23	0.05	< 0.01	< 0.03	< 0.03	< 0.03	< 0.03
8054	1/4/01	*	1.06	0.02	< 0.01	< 0.03	< 0.03	< 0.03	< 0.03
8055	1/4/01	*	2.13	0.14	0.07	0.05	< 0.03	< 0.03	< 0.03
8056	1/4/01	*	8.37	0.10	0.06	0.02	< 0.03	< 0.03	< 0.03
8057	1/4/01	*	2.17	< 0.01	< 0.01	< 0.03	< 0.03	< 0.03	< 0.03
8058	1/4/01	*	1.43	0.03	< 0.01	< 0.03	< 0.03	< 0.03	< 0.03
8059	1/4/01	*	1.12	0.04	0.01	< 0.03	< 0.03	< 0.03	< 0.03
8060	1/4/01	*	2.45	0.05	0.04	< 0.03	< 0.03	< 0.03	< 0.03
8061	1/4/01	*	2.34	0.07	0.05	< 0.03	< 0.03	< 0.03	< 0.03
8062	1/4/01	*	1.88	0.06	0.04	< 0.03	< 0.03	< 0.03	< 0.03
8063	1/4/01	*	2.76	0.19	0.18	0.08	0.11	< 0.03	< 0.03
AREA D									
9798	1/5/01	*	5.82	0.27	0.14	0.13	0.09	< 0.03	< 0.03



Exploration Technologies, Inc.
 10000 Wilshire Blvd., Suite 1000
 Los Angeles, CA 90024
 (213) 475-1111
 Fax: (213) 475-1112
 E-mail: info@explorationtech.com
 Web: www.explorationtech.com

Figure 1
 Additional Soil Gas Sites

Revised Map
 City of Los Angeles Department of Building and Safety
 1200 N. Los Angeles Street, Room 1800
 Los Angeles, CA 90012
 (213) 229-1111
 Fax: (213) 229-1112
 E-mail: info@cityofla.org
 Web: www.cityofla.org



Attachment B
Laboratory Reports and Chain-of-Custody Forms



Client Name: Camp Dresser & McKee
Contact: Michele Zych
Address: 18881 Von Karman

Page: Page 1 of 58
Order #: P0101057
Report Date: 01/22/01
Client Proj Name: Playa Vista
Client Proj #: 10610 31438 RT.FLD

Irvine, CA 92715

Sample Identification

ab Sample # Client Sample ID

0101057-01	6090	P0101057-25	7086	P0101057-49	8061
0101057-02	6094	P0101057-26	7078	P0101057-50	8062
0101057-03	6089	P0101057-27	7082	P0101057-51	8052
0101057-04	6086	P0101057-28	7077	P0101057-52	9831
0101057-05	6095	P0101057-29	7083	P0101057-53	9814
0101057-06	6091	P0101057-30	7084	P0101057-54	9830
0101057-07	6092	P0101057-31	7085	P0101057-55	9815
0101057-08	6093	P0101057-32	8053	P0101057-56	9816
0101057-09	6096	P0101057-33	8054	P0101057-57	9817
0101057-10	6097	P0101057-34	8049		
0101057-11	6079	P0101057-35	8046		
0101057-12	6080	P0101057-36	8048		
0101057-13	6085	P0101057-37	8047		
0101057-14	6081	P0101057-38	8044		
0101057-15	6088	P0101057-39	8045		
0101057-16	6084	P0101057-40	8051		
0101057-17	6087	P0101057-41	8050		
0101057-18	6083	P0101057-42	8056		
0101057-19	6082	P0101057-43	8057		
0101057-20	7088	P0101057-44	8055		
0101057-21	7079	P0101057-45	8058		
0101057-22	7087	P0101057-46	8059		
0101057-23	7080	P0101057-47	8063		
0101057-24	7081	P0101057-48	8060		

Approved By: _____

Page: Page 2 of 58
Order #: P0101057
Report Date: 01/22/01
Client Proj Name: Playa Vista
Client Proj #: 10610 31438 RT.FLD

Client Name: Camp Dresser & McKee
Contact: Michele Zych
Address: 18881 Von Karman
Suite 650
Irvine, CA 92715

Lab Sample #: P0101057-01

<u>Sample Description</u>	<u>Matrix</u>	<u>Sampled Date/Time</u>	<u>Received</u>
6090	Vapor	03 Jan. 01 11:00	08 Jan. 01

Analyte(s)	Result	PQL	Units	Method #
<u>Risk Analysis</u>				
Vapor				
Ethane	0.039	0.010	PPMV	AM20GAX
Ethene	0.019	0.010	PPMV	
iso-Butane	< 0.030	0.030	PPMV	
Methane	0.90	0.040	PPMV	
n-Butane	< 0.030	0.030	PPMV	
Propane	< 0.030	0.030	PPMV	
Propene	< 0.030	0.030	PPMV	
Benzene	< 0.070	0.070	PPMV	AM4.02
Ethylbenzene	< 0.070	0.070	PPMV	
m&p-Xylene	< 0.070	0.070	PPMV	
o-Xylene	< 0.070	0.070	PPMV	
Toluene	< 0.070	0.070	PPMV	

Page: Page 3 of 58
Order #: P0101057
Report Date: 01/22/01
Client Proj Name: Playa Vista
Client Proj #: 10610 31438 RT.FLD

Client Name: Camp Dresser & McKee
Contact: Michele Zych
Address: 18881 Von Karman
Suite 650
Irvine, CA 92715

Lab Sample #: P0101057-02

<u>Sample Description</u>	<u>Matrix</u>	<u>Sampled Date/Time</u>	<u>Received</u>
6094	Vapor	03 Jan. 01 11:00	08 Jan. 01

Analyte(s)	Result	PQL	Units	Method #
RiskAnalysis				
Vapor				
Ethane	0.072	0.010	PPMV	AM20GAX
Ethene	0.053	0.010	PPMV	
iso-Butane	< 0.030	0.030	PPMV	
Methane	2.4	0.040	PPMV	
n-Butane	< 0.030	0.030	PPMV	
Propane	<0.030	0.030	PPMV	AM4.02
Propene	< 0.030	0.030	PPMV	
Benzene	< 0.070	0.070	PPMV	
Ethylbenzene	< 0.070	0.070	PPMV	
m&p-Xylene	< 0.070	0.070	PPMV	
o-Xylene	< 0.070	0.070	PPMV	
Toluene	< 0.070	0.070	PPMV	

Page: Page 4 of 58
Order #: P0101057
Report Date: 01/22/01
Client Proj Name: Playa Vista
Client Proj #: 10610 31438 RT.FLD

Client Name: Camp Dresser & McKee
Contact: Michele Zych
Address: 18881 Von Karman
Suite 650
Irvine, CA 92715

Lab Sample #: P0101057-03

<u>Sample Description</u>	<u>Matrix</u>	<u>Sampled Date/Time</u>	<u>Received</u>
6089	Vapor	03 Jan. 01 11:20	08 Jan. 01

Analyte(s)	Result	PQL	Units	Method #
<u>Risk Analysis</u>				
Vapor				
Ethane	0.15	0.010	PPMV	AM20GAX
Ethene	0.12	0.010	PPMV	
iso-Butane	< 0.030	0.030	PPMV	
Methane	2.3	0.040	PPMV	
n-Butane	< 0.030	0.030	PPMV	
Propane	0.061	0.030	PPMV	
Propene	0.10	0.030	PPMV	
Benzene	< 0.070	0.070	PPMV	AM4.02
Ethylbenzene	< 0.070	0.070	PPMV	
m&p-Xylene	< 0.070	0.070	PPMV	
o-Xylene	< 0.070	0.070	PPMV	
Toluene	< 0.070	0.070	PPMV	

Page: Page 5 of 58
Order #: P0101057
Report Date: 01/22/01
Client Proj Name: Playa Vista
Client Proj #: 10610 31438 RT.FLD

Client Name: Camp Dresser & McKee
Contact: Michele Zych
Address: 18881 Von Karman
Suite 650
Irvine, CA 92715

Lab Sample #: P0101057-04

Sample Description	Matrix	Sampled Date/Time	Received
6086	Vapor	03 Jan. 01 11:30	08 Jan. 01

Analyte(s)	Result	PQL	Units	Method #
RiskAnalysis				
Vapor				
Ethane	0.089	0.010	PPMV	AM20GAX
Ethene	0.051	0.010	PPMV	
iso-Butane	< 0.030	0.030	PPMV	
Methane	3.2	0.040	PPMV	
n-Butane	< 0.030	0.030	PPMV	
Propane	0.043	0.030	PPMV	
Propene	< 0.030	0.030	PPMV	
Benzene	< 0.070	0.070	PPMV	AM4.02
Ethylbenzene	< 0.070	0.070	PPMV	
m&p-Xylene	< 0.070	0.070	PPMV	
o-Xylene	< 0.070	0.070	PPMV	
Toluene	< 0.070	0.070	PPMV	

Page: Page 6 of 58
Order #: P0101057
Report Date: 01/22/01
Client Proj Name: Playa Vista
Client Proj #: 10610 31438 RT.FLD

Client Name: Camp Dresser & McKee
Contact: Michele Zych
Address: 18881 Von Karman
Suite 650
Irvine, CA 92715

Lab Sample #: P0101057-05

<u>Sample Description</u>	<u>Matrix</u>	<u>Sampled Date/Time</u>	<u>Received</u>
3095	Vapor	03 Jan. 01 11:50	08 Jan. 01

Analyte(s)	Result	PQL	Units	Method #
Risk Analysis				
Vapor				
Ethane	0.069	0.010	PPMV	AM20GAX
Ethene	0.044	0.010	PPMV	
iso-Butane	< 0.030	0.030	PPMV	
Methane	1.4	0.040	PPMV	
n-Butane	< 0.030	0.030	PPMV	
Propane	< 0.030	0.030	PPMV	
Propene	< 0.030	0.030	PPMV	
Benzene	< 0.070	0.070	PPMV	AM4.02
Ethylbenzene	< 0.070	0.070	PPMV	
m&p-Xylene	< 0.070	0.070	PPMV	
o-Xylene	< 0.070	0.070	PPMV	
Toluene	< 0.070	0.070	PPMV	

Page: Page 7 of 58
Order #: P0101057
Report Date: 01/22/01
Client Proj Name: Playa Vista
Client Proj #: 10610 31438 RT.FLD

Client Name: Camp Dresser & McKee
Contact: Michele Zych
Address: 18881 Von Karman
Suite 650
Irvine, CA 92715

Lab Sample #: P0101057-06

Sample Description	Matrix	Sampled Date/Time	Received
3091	Vapor	03 Jan. 01 11:50	08 Jan. 01

Analyte(s)	Result	PQL	Units	Method #
Risk Analysis				
Vapor				
Ethane	0.034	0.010	PPMV	AM20GAX
Ethene	< 0.010	0.010	PPMV	
iso-Butane	< 0.030	0.030	PPMV	
Methane	0.88	0.040	PPMV	
n-Butane	< 0.030	0.030	PPMV	
Propane	< 0.030	0.030	PPMV	
Propene	< 0.030	0.030	PPMV	
Benzene	< 0.070	0.070	PPMV	AM4.02
Ethylbenzene	< 0.070	0.070	PPMV	
m&p-Xylene	< 0.070	0.070	PPMV	
o-Xylene	< 0.070	0.070	PPMV	
Toluene	< 0.070	0.070	PPMV	

Page: Page 8 of 58
Order #: P0101057
Report Date: 01/22/01
Client Proj Name: Playa Vista
Client Proj #: 10610 31438 RT.FLD

Client Name: Camp Dresser & McKee
Contact: Michele Zych
Address: 18881 Von Karman
Suite 650
Irvine, CA 92715

Lab Sample #: P0101057-07

Sample Description	Matrix	Sampled Date/Time	Received
6092	Vapor	03 Jan. 01 12:15	08 Jan. 01

Analyte(s)	Result	PQL	Units	Method #
Risk Analysis				
Vapor				
Ethane	0.049	0.010	PPMV	AM20GAX
Ethene	0.015	0.010	PPMV	
iso-Butane	< 0.030	0.030	PPMV	
Methane	1.8	0.040	PPMV	
n-Butane	< 0.030	0.030	PPMV	
Propane	<0.030	0.030	PPMV	
Propene	< 0.030	0.030	PPMV	
Benzene	< 0.070	0.070	PPMV	AM4.02
Ethylbenzene	< 0.070	0.070	PPMV	
m&p-Xylene	< 0.070	0.070	PPMV	
o-Xylene	< 0.070	0.070	PPMV	
Toluene	< 0.070	0.070	PPMV	

Page: Page 9 of 58
Order #: P0101057
Report Date: 01/22/01
Client Proj Name: Playa Vista
Client Proj #: 10610 31438 RT.FLD

Client Name: Camp Dresser & McKee
Contact: Michele Zych
Address: 18881 Von Karman
Suite 650
Irvine, CA 92715

Lab Sample #: P0101057-08

<u>Sample Description</u>	<u>Matrix</u>	<u>Sampled Date/Time</u>	<u>Received</u>
6093	Vapor	03 Jan. 01 12:10	08 Jan. 01

Analyte(s)	Result	PQL	Units	Method #
<u>RiskAnalysis</u>				
Vapor				
Ethane	0.040	0.010	PPMV	AM20GAX
Ethene	0.022	0.010	PPMV	
iso-Butane	< 0.030	0.030	PPMV	
Methane	2.2	0.040	PPMV	
n-Butane	< 0.030	0.030	PPMV	
Propane	< 0.030	0.030	PPMV	
Propene	< 0.030	0.030	PPMV	
Benzene	< 0.070	0.070	PPMV	AM4.02
Ethylbenzene	< 0.070	0.070	PPMV	
m&p-Xylene	< 0.070	0.070	PPMV	
o-Xylene	< 0.070	0.070	PPMV	
Toluene	< 0.070	0.070	PPMV	

Page: Page 10 of 58
Order #: P0101057
Report Date: 01/22/01
Client Proj Name: Playa Vista
Client Proj #: 10610 31438 RT.FLD

Client Name: Camp Dresser & McKee
Contact: Michele Zych
Address: 18881 Von Karman
Suite 650
Irvine, CA 92715

Lab Sample #: P0101057-09

<u>Sample Description</u>	<u>Matrix</u>	<u>Sampled Date/Time</u>	<u>Received</u>
6096	Vapor	03 Jan. 01 12:30	08 Jan. 01

Analyte(s)	Result	PQL	Units	Method #
Risk Analysis				
Vapor				
Ethane	0.052	0.010	PPMV	AM20GAX
Ethene	0.016	0.010	PPMV	
iso-Butane	< 0.030	0.030	PPMV	
Methane	2.5	0.040	PPMV	
n-Butane	< 0.030	0.030	PPMV	
Propane	< 0.030	0.030	PPMV	
Propene	< 0.030	0.030	PPMV	
Benzene	< 0.070	0.070	PPMV	AM4.02
Ethylbenzene	< 0.070	0.070	PPMV	
m&p-Xylene	< 0.070	0.070	PPMV	
o-Xylene	< 0.070	0.070	PPMV	
Toluene	0.084	0.070	PPMV	

Page: Page 11 of 58
Order #: P0101057
Report Date: 01/22/01
Client Proj Name: Playa Vista
Client Proj #: 10610 31438 RT.FLD

Client Name: Camp Dresser & McKee
Contact: Michele Zych
Address: 18881 Von Karman
Suite 650
Irvine, CA 92715

Lab Sample #: P0101057-10

<u>Sample Description</u>	<u>Matrix</u>	<u>Sampled Date/Time</u>	<u>Received</u>
6097	Vapor	03 Jan. 01 12:40	08 Jan. 01

Analyte(s)	Result	PQL	Units	Method #
<u>Risk Analysis</u>				
Vapor				
Ethane	0.034	0.010	PPMV	AM20GAX
Ethene	< 0.010	0.010	PPMV	
iso-Butane	< 0.030	0.030	PPMV	
Methane	1.7	0.040	PPMV	
n-Butane	< 0.030	0.030	PPMV	
Propane	< 0.030	0.030	PPMV	
Propene	< 0.030	0.030	PPMV	
Benzene	< 0.070	0.070	PPMV	AM4.02
Ethylbenzene	< 0.070	0.070	PPMV	
m&p-Xylene	< 0.070	0.070	PPMV	
o-Xylene	< 0.070	0.070	PPMV	
Toluene	0.077	0.070	PPMV	

Page: Page 12 of 58
Order #: P0101057
Report Date: 01/22/01
Client Proj Name: Playa Vista
Client Proj #: 10610 31438 RT.FLD

Client Name: Camp Dresser & McKee
Contact: Michele Zych
Address: 18881 Von Karman
Suite 650
Irvine, CA 92715

Lab Sample #: P0101057-11

<u>Sample Description</u>	<u>Matrix</u>	<u>Sampled Date/Time</u>	<u>Received</u>
6079	Vapor	03 Jan. 01 13:55	08 Jan. 01

Analyte(s)	Result	PQL	Units	Method #
Risk Analysis				
Vapor				
Ethane	0.041	0.010	PPMV	AM20GAX
Ethene	0.031	0.010	PPMV	
iso-Butane	< 0.030	0.030	PPMV	
Methane	1.4	0.040	PPMV	
n-Butane	< 0.030	0.030	PPMV	
Propane	< 0.030	0.030	PPMV	
Propene	< 0.030	0.030	PPMV	
Benzene	< 0.070	0.070	PPMV	AM4.02
Ethylbenzene	< 0.070	0.070	PPMV	
m&p-Xylene	< 0.070	0.070	PPMV	
o-Xylene	< 0.070	0.070	PPMV	
Toluene	0.10	0.070	PPMV	

Page: Page 13 of 58
Order #: P0101057
Report Date: 01/22/01
Client Proj Name: Playa Vista
Client Proj #: 10610 31438 RT.FLD

Client Name: Camp Dresser & McKee
Contact: Michele Zych
Address: 18881 Von Karman
Suite 650
Irvine, CA 92715

Lab Sample #: P0101057-12

<u>Sample Description</u>	<u>Matrix</u>	<u>Sampled Date/Time</u>	<u>Received</u>
3080	Vapor	03 Jan. 01 13:55	08 Jan. 01

Analyte(s)	Result	PQL	Units	Method #
<u>Risk Analysis</u>				
Vapor				
Ethane	0.056	0.010	PPMV	AM20GAX
Ethene	0.046	0.010	PPMV	
iso-Butane	< 0.030	0.030	PPMV	
Methane	2.2	0.040	PPMV	
n-Butane	< 0.030	0.030	PPMV	
Propane	< 0.030	0.030	PPMV	
Propene	< 0.030	0.030	PPMV	
Benzene	< 0.070	0.070	PPMV	AM4.02
Ethylbenzene	< 0.070	0.070	PPMV	
m&p-Xylene	< 0.070	0.070	PPMV	
o-Xylene	< 0.070	0.070	PPMV	
Toluene	< 0.070	0.070	PPMV	

Page: Page 14 of 58
Order #: P0101057
Report Date: 01/22/01
Client Proj Name: Playa Vista
Client Proj #: 10610 31438 RT.FLD

Client Name: Camp Dresser & McKee
Contact: Michele Zych
Address: 18881 Von Karman
Suite 650
Irvine, CA 92715

Lab Sample #: P0101057-13

Sample Description	Matrix	Sampled Date/Time	Received
6085	Vapor	03 Jan. 01 14:10	08 Jan. 01

Analyte(s)	Result	PQL	Units	Method #
Risk Analysis				
Vapor				
Ethane	0.025	0.010	PPMV	AM20GAX
Ethene	< 0.010	0.010	PPMV	
iso-Butane	< 0.030	0.030	PPMV	
Methane	1.5	0.040	PPMV	
n-Butane	< 0.030	0.030	PPMV	
Propane	< 0.030	0.030	PPMV	
Propene	< 0.030	0.030	PPMV	
Benzene	< 0.070	0.070	PPMV	AM4.02
Ethylbenzene	< 0.070	0.070	PPMV	
m&p-Xylene	< 0.070	0.070	PPMV	
o-Xylene	< 0.070	0.070	PPMV	
Toluene	0.096	0.070	PPMV	

Page: Page 15 of 58
Order #: P0101057
Report Date: 01/22/01
Client Proj Name: Playa Vista
Client Proj #: 10610 31438 RT.FLD

Client Name: Camp Dresser & McKee
Contact: Michele Zych
Address: 18881 Von Karman
Suite 650
Irvine, CA 92715

Lab Sample #: P0101057-14

<u>Sample Description</u>	<u>Matrix</u>	<u>Sampled Date/Time</u>	<u>Received</u>
6081	Vapor	03 Jan. 01 14:10	08 Jan. 01

Analyte(s)	Result	PQL	Units	Method #
Risk Analysis				
Vapor				
Ethane	0.027	0.010	PPMV	AM20GAX
Ethene	0.027	0.010	PPMV	
iso-Butane	< 0.030	0.030	PPMV	
Methane	0.97	0.040	PPMV	
n-Butane	< 0.030	0.030	PPMV	
Propane	< 0.030	0.030	PPMV	
Propene	< 0.030	0.030	PPMV	
Benzene	< 0.070	0.070	PPMV	AM4.02
Ethylbenzene	< 0.070	0.070	PPMV	
m&p-Xylene	< 0.070	0.070	PPMV	
o-Xylene	< 0.070	0.070	PPMV	
Toluene	0.080	0.070	PPMV	

Page: Page 16 of 58
 Order #: P0101057
 Report Date: 01/22/01
 Client Proj Name: Playa Vista
 Client Proj #: 10610 31438 RT.FLD

Client Name: Camp Dresser & McKee
 Contact: Michele Zych
 Address: 18881 Von Karman
 Suite 650
 Irvine, CA 92715

Lab Sample #: P0101057-15

<u>Sample Description</u>	<u>Matrix</u>	<u>Sampled Date/Time</u>	<u>Received</u>
6088	Vapor	03 Jan. 01 14:40	08 Jan. 01

Analyte(s)	Result	PQL	Units	Method #
<u>RiskAnalysis</u>				
Vapor				
Ethane	0.077	0.010	PPMV	AM20GAX
Ethene	0.068	0.010	PPMV	
iso-Butane	< 0.030	0.030	PPMV	
Methane	1.8	0.040	PPMV	
n-Butane	< 0.030	0.030	PPMV	
Propane	0.032	0.030	PPMV	
Propene	< 0.030	0.030	PPMV	
Benzene	< 0.070	0.070	PPMV	AM4.02
Ethylbenzene	< 0.070	0.070	PPMV	
m&p-Xylene	< 0.070	0.070	PPMV	
o-Xylene	< 0.070	0.070	PPMV	
Toluene	0.11	0.070	PPMV	

Page: Page 17 of 58
Order #: P0101057
Report Date: 01/22/01
Client Proj Name: Playa Vista
Client Proj #: 10610 31438 RT.FLD

Client Name: Camp Dresser & McKee
Contact: Michele Zych
Address: 18881 Von Karman
Suite 650
Irvine, CA 92715

Lab Sample #: P0101057-16

<u>Sample Description</u>	<u>Matrix</u>	<u>Sampled Date/Time</u>	<u>Received</u>
6084	Vapor	03 Jan. 01 14:40	08 Jan. 01

Analyte(s)	Result	PQL	Units	Method #
<u>Risk Analysis</u>				
Vapor				
Ethane	0.016	0.010	PPMV	AM20GAX
Ethene	< 0.010	0.010	PPMV	
iso-Butane	< 0.030	0.030	PPMV	
Methane	1.3	0.040	PPMV	
n-Butane	< 0.030	0.030	PPMV	
Propane	< 0.030	0.030	PPMV	
Propene	< 0.030	0.030	PPMV	
Benzene	< 0.070	0.070	PPMV	AM4.02
Ethylbenzene	< 0.070	0.070	PPMV	
m&p-Xylene	< 0.070	0.070	PPMV	
o-Xylene	< 0.070	0.070	PPMV	
Toluene	0.14	0.070	PPMV	

Page: Page 18 of 58
 Order #: P0101057
 Report Date: 01/22/01
 Client Proj Name: Playa Vista
 Client Proj #: 10610 31438 RT.FLD

Client Name: Camp Dresser & McKee
 Contact: Michele Zych
 Address: 18881 Von Karman
 Suite 650
 Irvine, CA 92715

Lab Sample #: P0101057-17

Sample Description	Matrix	Sampled Date/Time	Received
6087	Vapor	03 Jan. 01 14:55	08 Jan. 01

Analyte(s)	Result	PQL	Units	Method #
Risk Analysis				
Vapor				
Ethane	0.060	0.010	PPMV	AM20GAX
Ethene	0.043	0.010	PPMV	
iso-Butane	< 0.030	0.030	PPMV	
Methane	1.2	0.040	PPMV	
n-Butane	< 0.030	0.030	PPMV	
Propane	< 0.030	0.030	PPMV	AM4.02
Propene	< 0.030	0.030	PPMV	
Benzene	< 0.070	0.070	PPMV	
Ethylbenzene	< 0.070	0.070	PPMV	
m&p-Xylene	< 0.070	0.070	PPMV	
o-Xylene	< 0.070	0.070	PPMV	
Toluene	0.096	0.070	PPMV	

Page: Page 19 of 58
 Order #: P0101057
 Report Date: 01/22/01
 Client Proj Name: Playa Vista
 Client Proj #: 10610 31438 RT.FLD

Client Name: Camp Dresser & McKee
 Contact: Michele Zych
 Address: 18881 Von Karman
 Suite 650
 Irvine, CA 92715

Lab Sample #: P0101057-18

<u>Sample Description</u>	<u>Matrix</u>	<u>Sampled Date/Time</u>	<u>Received</u>
6083	Vapor	03 Jan. 01 15:00	08 Jan. 01

Analyte(s)	Result	PQL	Units	Method #
Risk Analysis				
Vapor				
Ethane	0.057	0.010	PPMV	AM20GAX
Ethene	0.036	0.010	PPMV	
iso-Butane	< 0.030	0.030	PPMV	
Methane	2.2	0.040	PPMV	
n-Butane	< 0.030	0.030	PPMV	
Propane	< 0.030	0.030	PPMV	
Propene	< 0.030	0.030	PPMV	
Benzene	< 0.070	0.070	PPMV	AM4.02
Ethylbenzene	< 0.070	0.070	PPMV	
m&p-Xylene	< 0.070	0.070	PPMV	
o-Xylene	< 0.070	0.070	PPMV	
Toluene	0.13	0.070	PPMV	

Page: Page 20 of 58
Order #: P0101057
Report Date: 01/22/01
Client Proj Name: Playa Vista
Client Proj #: 10610 31438 RT.FLD

Client Name: Camp Dresser & McKee
Contact: Michele Zych
Address: 18881 Von Karman
Suite 650
Irvine, CA 92715

Lab Sample #: P0101057-19

Sample Description	Matrix	Sampled Date/Time	Received
6082	Vapor	03 Jan. 01 15:15	08 Jan. 01

Analyte(s)	Result	PQL	Units	Method #
Risk Analysis				
Vapor				
Ethane	0.21	0.010	PPMV	AM20GAX
Ethene	0.12	0.010	PPMV	
iso-Butane	< 0.030	0.030	PPMV	
Methane	4.6	0.040	PPMV	
n-Butane	< 0.030	0.030	PPMV	
Propane	0.078	0.030	PPMV	AM4.02
Propene	0.079	0.030	PPMV	
Benzene	< 0.070	0.070	PPMV	
Ethylbenzene	< 0.070	0.070	PPMV	
m&p-Xylene	< 0.070	0.070	PPMV	
o-Xylene	< 0.070	0.070	PPMV	
Toluene	< 0.070	0.070	PPMV	

Page: Page 21 of 58
Order #: P0101057
Report Date: 01/22/01
Client Proj Name: Playa Vista
Client Proj #: 10610 31438 RT.FLD

Client Name: Camp Dresser & McKee
Contact: Michele Zych
Address: 18881 Von Karman
Suite 650
Irvine, CA 92715

Lab Sample #: P0101057-20

<u>Sample Description</u>	<u>Matrix</u>	<u>Sampled Date/Time</u>	<u>Received</u>
7088	Vapor	03 Jan. 01 15:35	08 Jan. 01

<u>Analyte(s)</u>	<u>Result</u>	<u>POL</u>	<u>Units</u>	<u>Method #</u>
<u>Risk Analysis</u>				
Vapor				
Ethane	0.024	0.010	PPMV	AM20GAX
Ethene	< 0.010	0.010	PPMV	
iso-Butane	< 0.030	0.030	PPMV	
Methane	0.71	0.040	PPMV	
n-Butane	< 0.030	0.030	PPMV	
Propane	< 0.030	0.030	PPMV	
Propene	< 0.030	0.030	PPMV	
Benzene	< 0.070	0.070	PPMV	AM4.02
Ethylbenzene	< 0.070	0.070	PPMV	
m&p-Xylene	< 0.070	0.070	PPMV	
o-Xylene	< 0.070	0.070	PPMV	
Toluene	< 0.070	0.070	PPMV	

Page: Page 22 of 58
Order #: P0101057
Report Date: 01/22/01
Client Proj Name: Playa Vista
Client Proj #: 10610 31438 RT.FLD

Client Name: Camp Dresser & McKee
Contact: Michele Zych
Address: 18881 Von Karman
Suite 650
Irvine, CA 92715

Lab Sample #: P0101057-21

Sample Description	Matrix	Sampled Date/Time	Received
7079	Vapor	03 Jan. 01 15:40	08 Jan. 01

Analyte(s)	Result	PQL	Units	Method #
Risk Analysis				
Vapor				
Ethane	< 0.010	0.010	PPMV	AM20GAX
Ethene	< 0.010	0.010	PPMV	
iso-Butane	< 0.030	0.030	PPMV	
Methane	1.0	0.040	PPMV	
n-Butane	< 0.030	0.030	PPMV	
Propane	< 0.030	0.030	PPMV	AM4.02
Propene	< 0.030	0.030	PPMV	
Benzene	< 0.070	0.070	PPMV	
Ethylbenzene	< 0.070	0.070	PPMV	
m&p-Xylene	< 0.070	0.070	PPMV	
o-Xylene	< 0.070	0.070	PPMV	
Toluene	< 0.070	0.070	PPMV	

Page: Page 23 of 58
 Order #: P0101057
 Report Date: 01/22/01
 Client Proj Name: Playa Vista
 Client Proj #: 10610 31438 RT.FLD

Client Name: Camp Dresser & McKee
 Contact: Michele Zych
 Address: 18881 Von Karman
 Suite 650
 Irvine, CA 92715

Lab Sample #: P0101057-22

Sample Description	Matrix	Sampled Date/Time	Received
7087	Vapor	03 Jan. 01 15:50	08 Jan. 01

Analvte(s)	Result	POL	Units	Method #
------------	--------	-----	-------	----------

RiskAnalysis

Vapor				
Ethane	0.028	0.010	PPMV	AM20GAX
Ethene	< 0.010	0.010	PPMV	
iso-Butane	< 0.030	0.030	PPMV	
Methane	1.1	0.040	PPMV	
n-Butane	< 0.030	0.030	PPMV	
Propane	< 0.030	0.030	PPMV	
Propene	< 0.030	0.030	PPMV	
Benzene	< 0.070	0.070	PPMV	AM4.02
Ethylbenzene	< 0.070	0.070	PPMV	
m&p-Xylene	< 0.070	0.070	PPMV	
o-Xylene	< 0.070	0.070	PPMV	
Toluene	0.15	0.070	PPMV	

Page: Page 24 of 58
Order #: P0101057
Report Date: 01/22/01
Client Proj Name: Playa Vista
Client Proj #: 10610 31438 RT.FLD

Client Name: Camp Dresser & McKee
Contact: Michele Zych
Address: 18881 Von Karman
Suite 650
Irvine, CA 92715

Lab Sample #: P0101057-23

Sample Description	Matrix	Sampled Date/Time	Received
7080	Vapor	03 Jan. 01 15:50	08 Jan. 01

Analvte(s)	Result	POL	Units	Method #
RiskAnalysis				
Vapor				
Ethane	0.043	0.010	PPMV	AM20GAX
Ethane	0.029	0.010	PPMV	
iso-Butane	< 0.030	0.030	PPMV	
Methane	8.4	0.040	PPMV	
n-Butane	< 0.030	0.030	PPMV	AM4.02
Propane	< 0.030	0.030	PPMV	
Propene	< 0.030	0.030	PPMV	
Benzene	< 0.070	0.070	PPMV	
Ethylbenzene	< 0.070	0.070	PPMV	
m&p-Xylene	< 0.070	0.070	PPMV	
o-Xylene	< 0.070	0.070	PPMV	
Toluene	< 0.070	0.070	PPMV	

Page: Page 25 of 58
Order #: P0101057
Report Date: 01/22/01
Client Proj Name: Playa Vista
Client Proj #: 10610 31438 RT.FLD

Client Name: Camp Dresser & McKee
Contact: Michele Zych
Address: 18881 Von Karman
Suite 650
Irvine, CA 92715

Lab Sample #: P0101057-24

<u>Sample Description</u>	<u>Matrix</u>	<u>Sampled Date/Time</u>	<u>Received</u>
7081	Vapor	03 Jan. 01 16:00	08 Jan. 01

<u>Analyte(s)</u>	<u>Result</u>	<u>PQL</u>	<u>Units</u>	<u>Method #</u>
<u>Risk Analysis</u>				
Vapor				
Ethane	0.071	0.010	PPMV	AM20GAX
Ethene	0.023	0.010	PPMV	
iso-Butane	< 0.030	0.030	PPMV	
Methane	3.3	0.040	PPMV	
n-Butane	< 0.030	0.030	PPMV	
Propane	< 0.030	0.030	PPMV	
Propene	< 0.030	0.030	PPMV	
Benzene	< 0.070	0.070	PPMV	AM4.02
Ethylbenzene	< 0.070	0.070	PPMV	
m&p-Xylene	< 0.070	0.070	PPMV	
o-Xylene	< 0.070	0.070	PPMV	
Toluene	0.12	0.070	PPMV	

Page: Page 26 of 58
Order #: P0101057
Report Date: 01/22/01
Client Proj Name: Playa Vista
Client Proj #: 10610 31438 RT.FLD

Client Name: Camp Dresser & McKee
Contact: Michele Zych
Address: 18881 Von Karman
Suite 650
Irvine, CA 92715

Lab Sample #: P0101057-25

Sample Description	Matrix	Sampled Date/Time	Received
7086	Vapor	03 Jan. 01 16:05	08 Jan. 01

Analyte(s)	Result	POL	Units	Method #
------------	--------	-----	-------	----------

Risk Analysis

Vapor				
Ethane	0.020	0.010	PPMV	AM20GAX
Ethene	< 0.010	0.010	PPMV	
iso-Butane	< 0.030	0.030	PPMV	
Methane	1.2	0.040	PPMV	
n-Butane	< 0.030	0.030	PPMV	
Propane	< 0.030	0.030	PPMV	
Propene	< 0.030	0.030	PPMV	
Benzene	< 0.070	0.070	PPMV	AM4.02
Ethylbenzene	< 0.070	0.070	PPMV	
m&p-Xylene	< 0.070	0.070	PPMV	
o-Xylene	< 0.070	0.070	PPMV	
Toluene	< 0.070	0.070	PPMV	

Page: Page 27 of 58
Order #: P0101057
Report Date: 01/22/01
Client Proj Name: Playa Vista
Client Proi #: 10610 31438 RT.FLD

Client Name: Camp Dresser & McKee
Contact: Michele Zych
Address: 18881 Von Karman
Suite 650
Irvine, CA 92715

Lab Sample #: P0101057-26

<u>Sample Description</u>	<u>Matrix</u>	<u>Sampled Date/Time</u>	<u>Received</u>
7078	Vapor	04 Jan. 01 8:25	08 Jan. 01

<u>Analyte(s)</u>	<u>Result</u>	<u>POI</u>	<u>Units</u>	<u>Method #</u>
<u>Risk Analysis</u>				
Vapor				
Ethane	0.035	0.010	PPMV	AM20GAX
Ethene	< 0.010	0.010	PPMV	
iso-Butane	< 0.030	0.030	PPMV	
Methane	1.5	0.040	PPMV	
n-Butane	< 0.030	0.030	PPMV	
Propane	< 0.030	0.030	PPMV	AM4.02
Propene	< 0.030	0.030	PPMV	
Benzene	< 0.070	0.070	PPMV	
Ethylbenzene	< 0.070	0.070	PPMV	
m&p-Xylene	< 0.070	0.070	PPMV	
o-Xylene	< 0.070	0.070	PPMV	
Toluene	< 0.070	0.070	PPMV	

Page: Page 28 of 58
 Order #: P0101057
 Report Date: 01/22/01
 Client Proj Name: Playa Vista
 Client Proj #: 10610 31438 RT.FLD

Client Name: Camp Dresser & McKee
 Contact: Michele Zych
 Address: 18881 Von Karman
 Suite 650
 Irvine, CA 92715

Lab Sample #: P0101057-27

Sample Description	Matrix	Sampled Date/Time	Received
7082	Vapor	04 Jan. 01 8:25	08 Jan. 01

Analvte(s)	Result	PQI	Units	Method #
------------	--------	-----	-------	----------

RiskAnalysis

Vapor				
Ethane	0.064	0.010	PPMV	AM20GAX
Ethene	< 0.010	0.010	PPMV	
iso-Butane	< 0.030	0.030	PPMV	
Methane	3.7	0.040	PPMV	
n-Butane	< 0.030	0.030	PPMV	
Propane	< 0.030	0.030	PPMV	
Propene	< 0.030	0.030	PPMV	
Benzene	< 0.070	0.070	PPMV	AM4.02
Ethylbenzene	< 0.070	0.070	PPMV	
m&p-Xylene	< 0.070	0.070	PPMV	
o-Xylene	< 0.070	0.070	PPMV	
Toluene	< 0.070	0.070	PPMV	

Page: Page 29 of 58
Order #: P0101057
Report Date: 01/22/01
Client Proj Name: Plava Vista
Client Proj #: 10610 31438 RT.FLD

Client Name: Camp Dresser & McKee
Contact: Michele Zych
Address: 18881 Von Karman
Suite 650
Irvine, CA 92715

Lab Sample #: P0101057-28

<u>Sample Description</u>	<u>Matrix</u>	<u>Sampled Date/Time</u>	<u>Received</u>
7077	Vapor	04 Jan. 01 8:40	08 Jan. 01

<u>Analvte(s)</u>	<u>Result</u>	<u>POI</u>	<u>Units</u>	<u>Method #</u>
<u>RiskAnalysis</u>				
Vapor				
Ethane	0.10	0.010	PPMV	AM20GAX
Ethene	< 0.010	0.010	PPMV	
iso-Butane	< 0.030	0.030	PPMV	
Methane	16	0.040	PPMV	
n-Butane	< 0.030	0.030	PPMV	
Propane	<0.030	0.030	PPMV	
Propene	< 0.030	0.030	PPMV	
Benzene	< 0.070	0.070	PPMV	AM4.02
Ethylbenzene	< 0.070	0.070	PPMV	
m&p-Xylene	< 0.070	0.070	PPMV	
o-Xylene	< 0.070	0.070	PPMV	
Toluene	< 0.070	0.070	PPMV	

Page: Page 30 of 58
 Order #: P0101057
 Report Date: 01/22/01
 Client Proj Name: Playa Vista
 Client Proj #: 10610 31438 RT.FLD

Client Name: Camp Dresser & McKee
 Contact: Michele Zych
 Address: 18881 Von Karman
 Suite 650
 Irvine, CA 92715

Lab Sample #: P0101057-29

Sample Description	Matrix	Sampled Date/Time	Received
7083	Vapor	04 Jan. 01 8:45	08 Jan. 01

Analvte(s)	Result	POL	Units	Method #
------------	--------	-----	-------	----------

Risk Analysis

Vapor				
Ethane	0.063	0.010	PPMV	AM20GAX
Ethene	< 0.010	0.010	PPMV	
iso-Butane	< 0.030	0.030	PPMV	
Methane	4.0	0.040	PPMV	
n-Butane	< 0.030	0.030	PPMV	
Propane	< 0.030	0.030	PPMV	
Propene	< 0.030	0.030	PPMV	
Benzene	< 0.070	0.070	PPMV	AM4.02
Ethylbenzene	< 0.070	0.070	PPMV	
m&p-Xylene	< 0.070	0.070	PPMV	
p-Xylene	< 0.070	0.070	PPMV	
Toluene	< 0.070	0.070	PPMV	

Page: Page 31 of 58
 Order #: P0101057
 Report Date: 01/22/01
 Client Proj Name: Playa Vista
 Client Proj #: 10610 31438 RT.FLD

Client Name: Camp Dresser & McKee
 Contact: Michele Zych
 Address: 18881 Von Karman
 Suite 650
 Irvine, CA 92715

Lab Sample #: P0101057-30

<u>Sample Description</u>	<u>Matrix</u>	<u>Sampled Date/Time</u>	<u>Received</u>
7084	Vapor	04 Jan. 01 9:00	08 Jan. 01

<u>Analyte(s)</u>	<u>Result</u>	<u>PQL</u>	<u>Units</u>	<u>Method #</u>
-------------------	---------------	------------	--------------	-----------------

Risk Analysis

Vapor				
Ethane	< 0.010	0.010	PPMV	AM20GAX
Ethene	< 0.010	0.010	PPMV	
iso-Butane	< 0.030	0.030	PPMV	
Methane	1.6	0.040	PPMV	
n-Butane	< 0.030	0.030	PPMV	
Propane	< 0.030	0.030	PPMV	
Propene	< 0.030	0.030	PPMV	
Benzene	< 0.070	0.070	PPMV	AM4.02
Ethylbenzene	< 0.070	0.070	PPMV	
m&p-Xylene	< 0.070	0.070	PPMV	
o-Xylene	< 0.070	0.070	PPMV	
Toluene	< 0.070	0.070	PPMV	

Page: Page 32 of 58
Order #: P0101057
Report Date: 01/22/01
Client Proj Name: Playa Vista
Client Proj #: 10610 31438 RT.FLD

Client Name: Camp Dresser & McKee
Contact: Michele Zych
Address: 18881 Von Karman
Suite 650
Irvine, CA 92715

Lab Sample #: P0101057-31

<u>Sample Description</u>	<u>Matrix</u>	<u>Sampled Date/Time</u>	<u>Received</u>
7085	Vapor	04 Jan. 01 9:00	08 Jan. 01

<u>Analyte(s)</u>	<u>Result</u>	<u>POI</u>	<u>Units</u>	<u>Method #</u>
-------------------	---------------	------------	--------------	-----------------

Risk Analysis

Vapor				
Ethane	0.032	0.010	PPMV	AM20GAX
Ethene	< 0.010	0.010	PPMV	
iso-Butane	< 0.030	0.030	PPMV	
Methane	3.5	0.040	PPMV	
n-Butane	< 0.030	0.030	PPMV	
Propane	< 0.030	0.030	PPMV	AM4.02
Propene	< 0.030	0.030	PPMV	
Benzene	< 0.070	0.070	PPMV	
Ethylbenzene	< 0.070	0.070	PPMV	
m&p-Xylene	< 0.070	0.070	PPMV	
o-Xylene	< 0.070	0.070	PPMV	
Toluene	< 0.070	0.070	PPMV	

Page: Page 33 of 58
Order #: P0101057
Report Date: 01/22/01
Client Proj Name: Playa Vista
Client Proj #: 10610 31438 RT.FLD

Client Name: Camp Dresser & McKee
Contact: Michele Zych
Address: 18881 Von Karman
Suite 650
Irvine, CA 92715

Lab Sample #: P0101057-32

<u>Sample Description</u>	<u>Matrix</u>	<u>Sampled Date/Time</u>	<u>Received</u>
8053	Vapor	04 Jan. 01 9:25	08 Jan. 01

<u>Analyte(s)</u>	<u>Result</u>	<u>POL</u>	<u>Units</u>	<u>Method #</u>
<u>Risk Analysis</u>				
Vapor				
Ethane	0.048	0.010	PPMV	AM20GAX
Ethene	< 0.010	0.010	PPMV	
iso-Butane	< 0.030	0.030	PPMV	
Methane	1.2	0.040	PPMV	
n-Butane	< 0.030	0.030	PPMV	
Propane	< 0.030	0.030	PPMV	
Propene	< 0.030	0.030	PPMV	
Benzene	< 0.070	0.070	PPMV	AM4.02
Ethylbenzene	< 0.070	0.070	PPMV	
m&p-Xylene	< 0.070	0.070	PPMV	
o-Xylene	< 0.070	0.070	PPMV	
Toluene	< 0.070	0.070	PPMV	

Page: Page 34 of 58
 Order #: P0101057
 Report Date: 01/22/01
 Client Proj Name: Playa Vista
 Client Proj #: 10610 31438 RT.FLD

Client Name: Camp Dresser & McKee
 Contact: Michele Zych
 Address: 18881 Von Karman
 Suite 650
 Irvine, CA 92715

Lab Sample #: P0101057-33

Sample Description

Matrix

Sampled Date/Time

Received

8054

Vapor

04 Jan. 01 9:20

08 Jan. 01

Analvte(s)	Result	POI	Units	Method #
<u>RiskAnalysis</u>				
Vapor				
Ethane	0.019	0.010	PPMV	AM20GAX
Ethene	< 0.010	0.010	PPMV	
iso-Butane	< 0.030	0.030	PPMV	
Methane	1.1	0.040	PPMV	
n-Butane	< 0.030	0.030	PPMV	
Propane	< 0.030	0.030	PPMV	AM4.02
Propene	< 0.030	0.030	PPMV	
Benzene	< 0.070	0.070	PPMV	
Ethylbenzene	< 0.070	0.070	PPMV	
m&p-Xylene	< 0.070	0.070	PPMV	
o-Xylene	< 0.070	0.070	PPMV	
Toluene	< 0.070	0.070	PPMV	

Page: Page 35 of 58
 Order #: P0101057
 Report Date: 01/22/01
 Client Proj Name: Playa Vista
 Client Proj #: 10610 31438 RT.FLD

Client Name: Camp Dresser & McKee
 Contact: Michele Zych
 Address: 18881 Von Karman
 Suite 650
 Irvine, CA 92715

Lab Sample #: P0101057-34

Sample Description	Matrix	Sampled Date/Time	Received
8049	Vapor	04 Jan. 01 9:40	08 Jan. 01

Analute(s)	Result	POI	Units	Method #
------------	--------	-----	-------	----------

Risk Analysis

Vapor				
Ethane	0.10	0.010	PPMV	AM20GAX
Ethene	0.088	0.010	PPMV	
iso-Butane	< 0.030	0.030	PPMV	
Methane	3.2	0.040	PPMV	
n-Butane	< 0.030	0.030	PPMV	
Propane	0.048	0.030	PPMV	
Propene	0.053	0.030	PPMV	
Benzene	< 0.070	0.070	PPMV	AM4.02
Ethylbenzene	< 0.070	0.070	PPMV	
m&p-Xylene	< 0.070	0.070	PPMV	
o-Xylene	< 0.070	0.070	PPMV	
Toluene	< 0.070	0.070	PPMV	

Page: Page 36 of 58
Order #: P0101057
Report Date: 01/22/01
Client Proj Name: Playa Vista
Client Proj #: 10610 31438 RT.FLD

Client Name: Camp Dresser & McKee
Contact: Michele Zych
Address: 18881 Von Karman
Suite 650
Irvine, CA 92715

Lab Sample #: P0101057-35

<u>Sample Description</u>	<u>Matrix</u>	<u>Sampled Date/Time</u>	<u>Received</u>
8046	Vapor	04 Jan. 01 9:55	08 Jan. 01

<u>Analyte(s)</u>	<u>Result</u>	<u>PQL</u>	<u>Units</u>	<u>Method #</u>
<u>Risk Analysis</u>				
Vapor				
Ethane	0.12	0.010	PPMV	AM20GAX
Ethene	0.020	0.010	PPMV	
iso-Butane	< 0.030	0.030	PPMV	
Methane	19	0.040	PPMV	
n-Butane	< 0.030	0.030	PPMV	
Propane	< 0.030	0.030	PPMV	
Propene	< 0.030	0.030	PPMV	
Benzene	< 0.070	0.070	PPMV	AM4.02
Ethylbenzene	< 0.070	0.070	PPMV	
m&p-Xylene	< 0.070	0.070	PPMV	
o-Xylene	< 0.070	0.070	PPMV	
Toluene	< 0.070	0.070	PPMV	

Page: Page 37 of 58
Order #: P0101057
Report Date: 01/22/01
Client Proj Name: Playa Vista
Client Proj #: 10610 31438 RT.FLD

Client Name: Camp Dresser & McKee
Contact: Michele Zych
Address: 18881 Von Karman
Suite 650
Irvine, CA 92715

Lab Sample #: P0101057-36

<u>Sample Description</u>	<u>Matrix</u>	<u>Sampled Date/Time</u>	<u>Received</u>
8048	Vapor	04 Jan. 01 10:25	08 Jan. 01

<u>Analyte(s)</u>	<u>Result</u>	<u>POL</u>	<u>Units</u>	<u>Method #</u>
-------------------	---------------	------------	--------------	-----------------

Risk Analysis

Vapor				
Ethane	0.11	0.010	PPMV	AM20GAX
Ethene	0.026	0.010	PPMV	
iso-Butane	< 0.030	0.030	PPMV	
Methane	6.1	0.040	PPMV	
n-Butane	< 0.030	0.030	PPMV	
Propane	0.037	0.030	PPMV	AM4.02
Propene	< 0.030	0.030	PPMV	
Benzene	< 0.070	0.070	PPMV	
Ethylbenzene	< 0.070	0.070	PPMV	
m&p-Xylene	< 0.070	0.070	PPMV	
o-Xylene	< 0.070	0.070	PPMV	
Toluene	< 0.070	0.070	PPMV	

Page: Page 38 of 58
 Order #: P0101057
 Report Date: 01/22/01
 Client Proj Name: Playa Vista
 Client Proj #: 10610 31438 RT.FLD

Client Name: Camp Dresser & McKee
 Contact: Michele Zych
 Address: 18881 Von Karman
 Suite 650
 Irvine, CA 92715

Lab Sample #: P0101057-37

Sample Description	Matrix	Sampled Date/Time	Received
8047	Vapor	04 Jan. 01 10:10	08 Jan. 01

Analvte(s)	Result	POI	Units	Method #
Risk Analysis				
Vapor				
Ethane	0.095	0.010	PPMV	AM20GAX
Ethene	0.035	0.010	PPMV	
iso-Butane	< 0.030	0.030	PPMV	
Methane	18	0.040	PPMV	
n-Butane	< 0.030	0.030	PPMV	AM4.02
Propane	<0.030	0.030	PPMV	
Propene	< 0.030	0.030	PPMV	
Benzene	< 0.070	0.070	PPMV	
Ethylbenzene	< 0.070	0.070	PPMV	
m&p-Xylene	< 0.070	0.070	PPMV	
p-Xylene	< 0.070	0.070	PPMV	
Toluene	< 0.070	0.070	PPMV	

Page: Page 39 of 58
 Order #: P0101057
 Report Date: 01/22/01
 Client Proj Name: Playa Vista
 Client Proj #: 10610 31438 RT.FLD

Client Name: Camp Dresser & McKee
 Contact: Michele Zych
 Address: 18881 Von Karman
 Suite 650
 Irvine, CA 92715

Lab Sample #: P0101057-38

Sample Description	Matrix	Sampled Date/Time	Received
3044	Vapor	04 Jan. 01 10:45	08 Jan. 01

Analvte(s)	Result	POL	Units	Method #
RiskAnalysis				
Vapor				
Ethane	0.14	0.010	PPMV	AM20GAX
Ethene	0.044	0.010	PPMV	
iso-Butane	< 0.030	0.030	PPMV	
Methane	2.3	0.040	PPMV	
n-Butane	< 0.030	0.030	PPMV	AM4.02
Propane	0.047	0.030	PPMV	
Propene	< 0.030	0.030	PPMV	
Benzene	< 0.070	0.070	PPMV	
Ethylbenzene	< 0.070	0.070	PPMV	
m&p-Xylene	< 0.070	0.070	PPMV	
o-Xylene	< 0.070	0.070	PPMV	
Toluene	< 0.070	0.070	PPMV	

Page: Page 40 of 58
 Order #: P0101057
 Report Date: 01/22/01
 Client Proj Name: Playa Vista
 Client Proj #: 10610 31438 RT.FLD

Client Name: Camp Dresser & McKee
 Contact: Michele Zych
 Address: 18881 Von Karman
 Suite 650
 Irvine, CA 92715

Lab Sample #: P0101057-39

Sample Description	Matrix	Sampled Date/Time	Received
B045	Vapor	04 Jan. 01 10:40	08 Jan. 01

Analute(s)	Result	PQL	Units	Method #
------------	--------	-----	-------	----------

Risk Analysis

Vapor				
Ethane	0.059	0.010	PPMV	AM20GAX
Ethene	0.037	0.010	PPMV	
iso-Butane	< 0.030	0.030	PPMV	
Methane	1.4	0.040	PPMV	
n-Butane	< 0.030	0.030	PPMV	
Propane	< 0.030	0.030	PPMV	AM4.02
Propene	< 0.030	0.030	PPMV	
Benzene	< 0.070	0.070	PPMV	
Ethylbenzene	< 0.070	0.070	PPMV	
m&p-Xylene	< 0.070	0.070	PPMV	
o-Xylene	< 0.070	0.070	PPMV	
Toluene	< 0.070	0.070	PPMV	

Page: Page 41 of 58
Order #: P0101057
Report Date: 01/22/01
Client Proj Name: Playa Vista
Client Proj #: 10610 31438 RT.FLD

Client Name: Camp Dresser & McKee
Contact: Michele Zych
Address: 18881 Von Karman
Suite 650
Irvine, CA 92715

Lab Sample #: P0101057-40

<u>Sample Description</u>	<u>Matrix</u>	<u>Sampled Date/Time</u>	<u>Received</u>
B051	Vapor	04 Jan. 01 11:10	08 Jan. 01

Analyte(s)	Result	PQL	Units	Method #
RiskAnalysis				
Vapor				
Ethane	0.043	0.010	PPMV	AM20GAX
Ethene	0.049	0.010	PPMV	
iso-Butane	< 0.030	0.030	PPMV	
Methane	0.90	0.040	PPMV	
n-Butane	< 0.030	0.030	PPMV	
Propane	< 0.030	0.030	PPMV	AM4.02
Propene	< 0.030	0.030	PPMV	
Benzene	< 0.070	0.070	PPMV	
Ethylbenzene	< 0.070	0.070	PPMV	
m&p-Xylene	< 0.070	0.070	PPMV	
o-Xylene	< 0.070	0.070	PPMV	
Toluene	< 0.070	0.070	PPMV	

Page: Page 42 of 58
Order #: P0101057
Report Date: 01/22/01
Client Proj Name: Playa Vista
Client Proj #: 10610 31438 RT.FLD

Client Name: Camp Dresser & McKee
Contact: Michele Zych
Address: 18881 Von Karman
Suite 650
Irvine, CA 92715

Lab Sample #: P0101057-41

<u>Sample Description</u>	<u>Matrix</u>	<u>Sampled Date/Time</u>	<u>Received</u>
B050	Vapor	04 Jan. 01 11:10	08 Jan. 01

Analyte(s)	Result	PQL	Units	Method #
<u>Risk Analysis</u>				
Vapor				
Ethane	0.030	0.010	PPMV	AM20GAX
Ethene	< 0.010	0.010	PPMV	
iso-Butane	< 0.030	0.030	PPMV	
Methane	2.1	0.040	PPMV	
n-Butane	< 0.030	0.030	PPMV	
Propane	< 0.030	0.030	PPMV	AM4.02
Propene	< 0.030	0.030	PPMV	
Benzene	< 0.070	0.070	PPMV	
Ethylbenzene	< 0.070	0.070	PPMV	
m&p-Xylene	< 0.070	0.070	PPMV	
o-Xylene	< 0.070	0.070	PPMV	
Toluene	< 0.070	0.070	PPMV	

Page: Page 43 of 58
Order #: P0101057
Report Date: 01/22/01
Client Proj Name: Playa Vista
Client Proj #: 10610 31438 RT.FLD

Client Name: Camp Dresser & McKee
Contact: Michele Zych
Address: 18881 Von Karman
Suite 650
Irvine, CA 92715

Lab Sample #: P0101057-42

Sample Description	Matrix	Sampled Date/Time	Received
3056	Vapor	04 Jan. 01 11:35	08 Jan. 01

Analyte(s)	Result	PQL	Units	Method #
Risk Analysis				
Vapor				
Ethane	0.096	0.010	PPMV	AM20GAX
Ethene	0.056	0.010	PPMV	
iso-Butane	< 0.030	0.030	PPMV	
Methane	8.4	0.040	PPMV	
n-Butane	< 0.030	0.030	PPMV	
Propane	< 0.030	0.030	PPMV	
Propene	< 0.030	0.030	PPMV	
Benzene	< 0.070	0.070	PPMV	AM4.02
Ethylbenzene	< 0.070	0.070	PPMV	
m&p-Xylene	< 0.070	0.070	PPMV	
o-Xylene	< 0.070	0.070	PPMV	
Toluene	< 0.070	0.070	PPMV	

Page: Page 44 of 58
Order #: P0101057
Report Date: 01/22/01
Client Proj Name: Playa Vista
Client Proj #: 10610 31438 RT.FLD

Client Name: Camp Dresser & McKee
Contact: Michele Zych
Address: 18881 Von Karman
Suite 650
Irvine, CA 92715

Lab Sample #: P0101057-43

<u>Sample Description</u>	<u>Matrix</u>	<u>Sampled Date/Time</u>	<u>Received</u>
B057	Vapor	04 Jan. 01 11:30	08 Jan. 01

<u>Analyte(s)</u>	<u>Result</u>	<u>PQL</u>	<u>Units</u>	<u>Method #</u>
<u>Risk Analysis</u>				
Vapor				
Ethane	< 0.010	0.010	PPMV	AM20GAX
Ethene	< 0.010	0.010	PPMV	
iso-Butane	< 0.030	0.030	PPMV	
Methane	2.2	0.040	PPMV	
n-Butane	< 0.030	0.030	PPMV	
Propane	< 0.030	0.030	PPMV	AM4.02
Propene	< 0.030	0.030	PPMV	
Benzene	< 0.070	0.070	PPMV	
Ethylbenzene	< 0.070	0.070	PPMV	
m&p-Xylene	< 0.070	0.070	PPMV	
p-Xylene	< 0.070	0.070	PPMV	
Toluene	< 0.070	0.070	PPMV	

Page: Page 45 of 58
 Order #: P0101057
 Report Date: 01/22/01
 Client Proj Name: Playa Vista
 Client Proj #: 10610 31438 RT.FLD

Client Name: Camp Dresser & McKee
 Contact: Michele Zych
 Address: 18881 Von Karman
 Suite 650
 Irvine, CA 92715

Lab Sample #: P0101057-44

<u>Sample Description</u>	<u>Matrix</u>	<u>Sampled Date/Time</u>	<u>Received</u>
0055	Vapor	04 Jan. 01 13:55	08 Jan. 01

Analyte(s)	Result	PQL	Units	Method #
Risk Analysis				
Vapor				
Ethane	0.14	0.010	PPMV	AM20GAX
Ethene	0.066	0.010	PPMV	
iso-Butane	< 0.030	0.030	PPMV	
Methane	2.1	0.040	PPMV	
n-Butane	< 0.030	0.030	PPMV	
Propane	0.045	0.030	PPMV	
Propene	< 0.030	0.030	PPMV	
Benzene	< 0.070	0.070	PPMV	AM4.02
Ethylbenzene	< 0.070	0.070	PPMV	
m&p-Xylene	< 0.070	0.070	PPMV	
o-Xylene	< 0.070	0.070	PPMV	
Toluene	< 0.070	0.070	PPMV	

Page: Page 46 of 58
 Order #: P0101057
 Report Date: 01/22/01
 Client Proj Name: Playa Vista
 Client Proj #: 10610 31438 RT.FLD

Client Name: Camp Dresser & McKee
 Contact: Michele Zych
 Address: 18881 Von Karman
 Suite 650
 Irvine, CA 92715

Lab Sample #: P0101057-45

Sample Description: 058
 Matrix: Vapor
 Sampled Date/Time: 04 Jan. 01 13:55
 Received: 08 Jan. 01

Analyte(s)	Result	PQL	Units	Method #
Risk Analysis				
Vapor				
ethane	0.034	0.010	PPMV	AM20GAX
ethene	< 0.010	0.010	PPMV	
iso-Butane	< 0.030	0.030	PPMV	
methane	1.4	0.040	PPMV	
n-Butane	< 0.030	0.030	PPMV	AM4.02
propane	< 0.030	0.030	PPMV	
propene	< 0.030	0.030	PPMV	
benzene	< 0.070	0.070	PPMV	
ethylbenzene	< 0.070	0.070	PPMV	
o&p-Xylene	< 0.070	0.070	PPMV	
m-Xylene	< 0.070	0.070	PPMV	
toluene	< 0.070	0.070	PPMV	

Page: Page 47 of 58
 Order #: P0101057
 Report Date: 01/22/01
 Client Proj Name: Playa Vista
 Client Proj #: 10610 31438 RT.FLD

Client Name: Camp Dresser & McKee
 Contact: Michele Zych
 Address: 18881 Von Karman
 Suite 650
 Irvine, CA 92715

Lab Sample #: P0101057-46

Sample Description	Matrix	Sampled Date/Time	Received
3059	Vapor	04 Jan. 01 14:10	08 Jan. 01

Analyte(s)	Result	PQL	Units	Method #
Risk Analysis				
Vapor				
Ethane	0.039	0.010	PPMV	AM20GAX
Ethene	0.012	0.010	PPMV	
iso-Butane	< 0.030	0.030	PPMV	
Methane	1.1	0.040	PPMV	
n-Butane	< 0.030	0.030	PPMV	AM4.02
Propane	< 0.030	0.030	PPMV	
Propene	< 0.030	0.030	PPMV	
Benzene	< 0.070	0.070	PPMV	
Ethylbenzene	< 0.070	0.070	PPMV	
m&p-Xylene	< 0.070	0.070	PPMV	
o-Xylene	< 0.070	0.070	PPMV	
Toluene	< 0.070	0.070	PPMV	

Page: Page 48 of 58
 Order #: P0101057
 Report Date: 01/22/01
 Client Proj Name: Playa Vista
 Client Proj #: 10610 31438 RT.FLD

Client Name: Camp Dresser & McKee
 Contact: Michele Zych
 Address: 18881 Von Karman
 Suite 650
 Irvine, CA 92715

Lab Sample #: P0101057-47

Sample Description	Matrix	Sampled Date/Time	Received
3063	Vapor	04 Jan. 01 14:10	08 Jan. 01

Analyte(s)	Result	PQL	Units	Method #
Risk Analysis				
Vapor				
Ethane	0.19	0.010	PPMV	AM20GAX
Ethene	0.18	0.010	PPMV	
iso-Butane	< 0.030	0.030	PPMV	
Methane	2.8	0.040	PPMV	
n-Butane	< 0.030	0.030	PPMV	AM4.02
Propane	0.079	0.030	PPMV	
Propene	0.11	0.030	PPMV	
Benzene	< 0.070	0.070	PPMV	
Ethylbenzene	< 0.070	0.070	PPMV	
m&p-Xylene	< 0.070	0.070	PPMV	
o-Xylene	< 0.070	0.070	PPMV	
Toluene	< 0.070	0.070	PPMV	

Page: Page 49 of 58
 Order #: P0101057
 Report Date: 01/22/01
 Client Proj Name: Playa Vista
 Client Proj #: 10610 31438 RT.FLD

Client Name: Camp Dresser & McKee
 Contact: Michele Zych
 Address: 18881 Von Karman
 Suite 650
 Irvine, CA 92715

Lab Sample #: P0101057-48

<u>Sample Description</u>	<u>Matrix</u>	<u>Sampled Date/Time</u>	<u>Received</u>
060	Vapor	04 Jan. 01 14:25	08 Jan. 01

Analyte(s)	Result	PQL	Units	Method #
Risk Analysis				
Vapor				
Ethane	0.053	0.010	PPMV	AM20GAX
Ethene	0.036	0.010	PPMV	
iso-Butane	< 0.030	0.030	PPMV	
Methane	2.4	0.040	PPMV	
n-Butane	< 0.030	0.030	PPMV	
Propane	< 0.030	0.030	PPMV	AM4.02
Propene	< 0.030	0.030	PPMV	
Benzene	< 0.070	0.070	PPMV	
Ethylbenzene	< 0.070	0.070	PPMV	
m&p-Xylene	< 0.070	0.070	PPMV	
p-Xylene	< 0.070	0.070	PPMV	
Toluene	< 0.070	0.070	PPMV	

Page: Page 50 of 58
 Order #: P0101057
 Report Date: 01/22/01
 Client Proj Name: Playa Vista
 Client Proj #: 10610 31438 RT.FLD

Client Name: Camp Dresser & McKee
 Contact: Michele Zych
 Address: 18881 Von Karman
 Suite 650
 Irvine, CA 92715

Lab Sample #: P0101057-49

Sample Description	Matrix	Sampled Date/Time	Received
8061	Vapor	04 Jan. 01 14:25	08 Jan. 01

Analyte(s)	Result	PQL	Units	Method #
Risk Analysis				
Vapor				
Ethane	0.074	0.010	PPMV	AM20GAX
Ethene	0.050	0.010	PPMV	
iso-Butane	< 0.030	0.030	PPMV	
Methane	2.3	0.040	PPMV	
n-Butane	< 0.030	0.030	PPMV	AM1.02
Propane	< 0.030	0.030	PPMV	
Propene	< 0.030	0.030	PPMV	
Benzene	< 0.070	0.070	PPMV	
Ethylbenzene	< 0.070	0.070	PPMV	
m&p-Xylene	< 0.070	0.070	PPMV	
o-Xylene	< 0.070	0.070	PPMV	
Toluene	< 0.070	0.070	PPMV	

Page: Page 51 of 58
Order #: P0101057
Report Date: 01/22/01
Client Proj Name: Playa Vista
Client Proj #: 10610 31438 RT.FLD

Client Name: Camp Dresser & McKee
Contact: Michele Zych
Address: 18881 Von Karman
Suite 650
Irvine, CA 92715

Lab Sample #: P0101057-50

<u>Sample Description</u>	<u>Matrix</u>	<u>Sampled Date/Time</u>	<u>Received</u>
3062	Vapor	04 Jan. 01 14:45	08 Jan. 01

<u>Analyte(s)</u>	<u>Result</u>	<u>PQL</u>	<u>Units</u>	<u>Method #</u>
-------------------	---------------	------------	--------------	-----------------

Risk Analysis

Ethane	0.055	0.010	PPMV	AM20GAX
Ethene	0.038	0.010	PPMV	
iso-Butane	< 0.030	0.030	PPMV	
Methane	1.9	0.040	PPMV	
n-Butane	< 0.030	0.030	PPMV	
Propane	< 0.030	0.030	PPMV	
Propene	< 0.030	0.030	PPMV	
Benzene	< 0.070	0.070	PPMV	AM4.02
Ethylbenzene	< 0.070	0.070	PPMV	
m&p-Xylene	< 0.070	0.070	PPMV	
o-Xylene	< 0.070	0.070	PPMV	
Toluene	< 0.070	0.070	PPMV	

Page: Page 52 of 58
Order #: P0101057
Report Date: 01/22/01
Client Proj Name: Playa Vista
Client Proj #: 10610 31438 RT.FLD

Client Name: Camp Dresser & McKee
Contact: Michele Zych
Address: 18881 Von Karman
Suite 650
Irvine, CA 92715

Lab Sample #: P0101057-51

<u>Sample Description</u>	<u>Matrix</u>	<u>Sampled Date/Time</u>	<u>Received</u>
8052	Vapor	04 Jan. 01 14:50	08 Jan. 01

<u>Analyte(s)</u>	<u>Result</u>	<u>PQL</u>	<u>Units</u>	<u>Method #</u>
-------------------	---------------	------------	--------------	-----------------

Risk Analysis

Vapor				
Ethane	0.022	0.010	PPMV	AM20GAX
Ethene	0.016	0.010	PPMV	
iso-Butane	< 0.030	0.030	PPMV	
Methane	1.3	0.040	PPMV	
n-Butane	< 0.030	0.030	PPMV	
Propane	< 0.030	0.030	PPMV	
Propene	< 0.030	0.030	PPMV	
Benzene	< 0.070	0.070	PPMV	AM4.02
Ethylbenzene	< 0.070	0.070	PPMV	
m&p-Xylene	< 0.070	0.070	PPMV	
o-Xylene	< 0.070	0.070	PPMV	
Toluene	< 0.070	0.070	PPMV	

Page: Page 53 of 58
Order #: P0101057
Report Date: 01/22/01
Client Proj Name: Playa Vista
Client Proj #: 10610 31438 RT.FLD

Client Name: Camp Dresser & McKee
Contact: Michele Zych
Address: 18881 Von Karman
Suite 650
Irvine, CA 92715

Lab Sample #: P0101057-52

Sample Description	Matrix	Sampled Date/Time	Received
9831	Vapor	04 Jan. 01 15:35	08 Jan. 01

Analyte(s)	Result	PQL	Units	Method #
Risk Analysis				
Vapor				
Ethane	2.2	0.010	PPMV	AM20GAX
Ethene	0.92	0.010	PPMV	
iso-Butane	0.24	0.030	PPMV	
Methane	4000	0.040	PPMV	
n-Butane	0.28	0.030	PPMV	
Propane	1.4	0.030	PPMV	
Propene	0.68	0.030	PPMV	
Benzene	< 0.070	0.070	PPMV	AM4.02
Ethylbenzene	< 0.070	0.070	PPMV	
m&p-Xylene	0.34	0.070	PPMV	
o-Xylene	0.075	0.070	PPMV	
Toluene	< 0.070	0.070	PPMV	

Page: Page 54 of 58
 Order #: P0101057
 Report Date: 01/22/01
 Client Proj Name: Playa Vista
 Client Proj #: 10610 31438 RT.FLD

Client Name: Camp Dresser & McKee
 Contact: Michele Zych
 Address: 18881 Von Karman
 Suite 650
 Irvine, CA 92715

Lab Sample #: P0101057-53

<u>Sample Description</u>	<u>Matrix</u>	<u>Sampled Date/Time</u>	<u>Received</u>
9814	Vapor	04 Jan. 01 15:30	08 Jan. 01

Analyte(s)	Result	PQL	Units	Method #
Risk Analysis				
Vapor				
Ethane	0.37	0.010	PPMV	AM20GAX
Ethene	0.34	0.010	PPMV	
iso-Butane	< 0.030	0.030	PPMV	
Methane	5.6	0.040	PPMV	
n-Butane	< 0.030	0.030	PPMV	AM4.02
Propane	0.14	0.030	PPMV	
Propene	0.23	0.030	PPMV	
Benzene	< 0.070	0.070	PPMV	
Ethylbenzene	< 0.070	0.070	PPMV	
m&p-Xylene	< 0.070	0.070	PPMV	
p-Xylene	< 0.070	0.070	PPMV	
Toluene	< 0.070	0.070	PPMV	

Page: Page 55 of 58
 Order #: P0101057
 Report Date: 01/22/01
 Client Proj Name: Playa Vista
 Client Proj #: 10610 31438 RT.FLD

Client Name: Camp Dresser & McKee
 Contact: Michele Zych
 Address: 18881 Von Karman
 Suite 650
 Irvine, CA 92715

Lab Sample #: P0101057-54

<u>Sample Description</u>	<u>Matrix</u>	<u>Sampled Date/Time</u>	<u>Received</u>
9830	Vapor	04 Jan. 01 15:45	08 Jan. 01

Analyte(s)	Result	PQL	Units	Method #
<u>Risk Analysis</u>				
Vapor				
Ethane	0.71	0.010	PPMV	AM20GAX
Ethene	0.28	0.010	PPMV	
iso-Butane	0.10	0.030	PPMV	
Methane	44000	0.040	PPMV	
n-Butane	0.21	0.030	PPMV	
Propane	0.73	0.030	PPMV	AM4.02
Propene	0.21	0.030	PPMV	
Benzene	< 0.070	0.070	PPMV	
Ethylbenzene	< 0.070	0.070	PPMV	
m&p-Xylene	< 0.070	0.070	PPMV	
o-Xylene	< 0.070	0.070	PPMV	
Toluene	< 0.070	0.070	PPMV	

Page: Page 56 of 58
 Order #: P0101057
 Report Date: 01/22/01
 Client Proj Name: Playa Vista
 Client Proj #: 10610 31438 RT.FLD

Client Name: Camp Dresser & McKee
 Contact: Michele Zych
 Address: 18881 Von Karman
 Suite 650
 Irvine, CA 92715

Lab Sample #: P0101057-55

<u>Sample Description</u>	<u>Matrix</u>	<u>Sampled Date/Time</u>	<u>Received</u>
9815	Vapor	04 Jan. 01 15:45	08 Jan. 01

Analyte(s)	Result	PQL	Units	Method #
Risk Analysis				
Vapor				
Ethane	0.63	0.010	PPMV	AM20GAX
Ethene	0.22	0.010	PPMV	
iso-Butane	0.074	0.030	PPMV	
Methane	14	0.040	PPMV	
n-Butane	0.082	0.030	PPMV	AM4.02
Propane	0.32	0.030	PPMV	
Propene	0.18	0.030	PPMV	
Benzene	< 0.070	0.070	PPMV	
Ethylbenzene	< 0.070	0.070	PPMV	
m&p-Xylene	< 0.070	0.070	PPMV	
o-Xylene	< 0.070	0.070	PPMV	
Toluene	< 0.070	0.070	PPMV	

Page: Page 57 of 58
 Order #: P0101057
 Report Date: 01/22/01
 Client Proj Name: Playa Vista
 Client Proj #: 10610 31438 RT.FLD

Client Name: Camp Dresser & McKee
 Contact: Michele Zych
 Address: 18881 Von Karman
 Suite 650
 Irvine, CA 92715

Lab Sample #: P0101057-56

Sample Description	Matrix	Sampled Date/Time	Received
9816	Vapor	04 Jan. 01 16:00	08 Jan. 01

Analyte(s)	Result	PQL	Units	Method #
Risk Analysis				
Vapor				
Ethane	3.8	0.010	PPMV	AM20GAX
Ethene	0.29	0.010	PPMV	
iso-Butane	0.33	0.030	PPMV	
Methane	9800	0.040	PPMV	
n-Butane	0.61	0.030	PPMV	
Propane	2.2	0.030	PPMV	AM4.02
Propene	0.22	0.030	PPMV	
Benzene	< 0.070	0.070	PPMV	
Ethylbenzene	< 0.070	0.070	PPMV	
m&p-Xylene	< 0.070	0.070	PPMV	
o-Xylene	< 0.070	0.070	PPMV	
Toluene	< 0.070	0.070	PPMV	

Page: Page 58 of 58
Order #: P0101057
Report Date: 01/22/01
Client Proj Name: Playa Vista
Client Proj #: 10610 31438 RT.FLD

Client Name: Camp Dresser & McKee
Contact: Michele Zych
Address: 18881 Von Karman
Suite 650
Irvine, CA 92715

Lab Sample #: P0101057-57

Sample Description	Matrix	Sampled Date/Time	Received
9817	Vapor	04 Jan. 01 16:00	08 Jan. 01

Analyte(s)	Result	PQL	Units	Method #
------------	--------	-----	-------	----------

Risk Analysis

Vapor				
Ethane	0.87	0.010	PPMV	AM20GAX
Ethene	0.41	0.010	PPMV	
iso-Butane	0.063	0.030	PPMV	
Methane	370	0.040	PPMV	
n-Butane	0.10	0.030	PPMV	
Propane	0.47	0.030	PPMV	
Propene	0.34	0.030	PPMV	
Benzene	< 0.070	0.070	PPMV	AM4.02
Ethylbenzene	< 0.070	0.070	PPMV	
m&p-Xylene	< 0.070	0.070	PPMV	
o-Xylene	< 0.070	0.070	PPMV	
Toluene	< 0.070	0.070	PPMV	

CHAIN OF CUSTODY RECORD AND ANALYSIS REQUEST FORM

Client: PLANA VISTA		Phone: ()		Contractor COC #	
Address: 1255 W JEFFERSON		Carrier: A.H.		MICROSEPT	
Project Name: LA CA 90066		Project Director: JMS		KARLESIS	
Project Location: LA CA 90066		Project Manager: WERSHATT			
Sample Signature: [Signature]		Project No.:			

SAMPLE CHARACTERIZATION										Preservative		Unl. Dies		Ker		Unknown	
Field ID	Date	Time	Depth	Soil	Water	Comp	GRA	Container	Sp. Type	Is	Other	PTT No.	Waste Oil	Sample Description	Tank No.		
7080	1-30-01	12:30	↓											A-H			
7081	1-30-01	12:35	↓											"			
7086	1-30-01	12:40	↓											"			

No. of CONTAINERS		No. coolers this shipment										Contractor COC #	
Total		EPA BTEX	TPH	CI-C4 & C5+	EXPL CI-C4	CO ₂	CAPILLARY GC FINGERPRINT	FLUORESCENCE	TOTAL LEAD	TDS	Please Hold	Turn-around	Remarks
2												ASAP	
2												24 hrs	
2												48 hrs	
												Standard	

Subscribed by		Signature		DATE		TIME		Received by		Signature		DATE		TIME		Remarks	
[Signature]		[Signature]		1-30-01		5P		[Signature]		[Signature]		1-40-01		4:30			
[Signature]		[Signature]		1-40-01		5P		[Signature]		[Signature]		1-40-01		5P			

Pink (Contractor), Yellow & White (Lab)

*** Pre-scheduling is recommended**



Environmental Technologies, Inc.
3698 Westchase
Houston, Texas 77042
(713) 785-0393
FAX: (713) 785-1550

CHAIN OF CUSTODY RECORD AND ANALYSIS REQUEST FORM

Client <u>PLAYA VISTA</u>		Phone ()		Contractor COC #																											
Address <u>12555 W JEFFERSON</u>		Carrier:		Quota #:																											
Project Name		Airbill No.		A-17 ANALYSIS																											
Project Location <u>LA CA 90066</u>		Project Director		Project Manager																											
Sender Signature		Project No.		Project No.																											
SAMPLE CHARACTERIZATION																															
Field ID	Date	Time	DEPTH	S O L I D	W A T E R	C O M P	G R A B	Container	Preservative	Unl	Dim	Ker	Unknown	Task No.	Sample Description																
																Size	Type	is	Other												
9016	1401	4405	4					22 P/G							AIH ANALYSIS																
9017	1401	4405	4					11							"																
<div style="text-align: center;">X</div>																															
No. of CONTAINERS																															
Total																															
No. coolers this shipment:																															
Carrier:																															
Airbill No.																															
Contractor COC #																															
Quota #:																															
Turn-around																															
- ASAP																															
- 24 hrs																															
- 48 hrs																															
Standard																															
Remarks																															
1																															
2																															
3																															
4																															
5																															
6																															
7																															
8																															
9																															
10																															
EPA BTEX																															
C1-C4 & C5+																															
EXPL C1-C4																															
CO ₂																															
CAPILLARY GC FINGERPRINT																															
FLUORESCENCE																															
TOTAL LEAD																															
TDS																															
Please Hold																															
LAB ONLY ID #																															

Relinquished by	Signature	DATE	TIME	Received by	Signature	DATE	TIME	Remarks
		1-4-01	4:50			1-4-01	5:00	
		1-4-01	5:15					
Received For Laboratory by				Washburn				1/8/01

* Pre-scheduling is recommended



Environmental Technologies, Inc.
3698 Westchase
Houston, Texas 77042
713-785-0393
MCOS (713) 785-1550

CHAIN OF CUSTODY RECORD AND ANALYSIS REQUEST FORM

Page 3 of 4
Lab. Batch #

Client: PLUPHA VLSTA		Phone ()		Contractor COC #																								
Address: 1255 W JEFFERSON		Carrier: A/H ANALYSTS		Quote #:																								
Project Name: LA CA 90066		Project Director: MERSHANT		No. coolers this shipment																								
Project Location: LA CA 90066		Project Manager: MERSHANT		Carrier: A/H ANALYSTS																								
Sample Signature: [Signature]		Project No:		Airbill No.																								
SAMPLE CHARACTERIZATION				CONTAINERS																								
Field ID	Date	Time	Depth	Soil	Water	Comp	Gr	A	B	Preservative	Unl	Dis	Kur	Unknown	Task No.	Sample Description	Total	No. of CONTAINERS										
																		Total										
8059	1-4-01	12:45	4															2	EPA BTEX									
8063	1-4-01	12:45																1	TPH									
8060	1-4-01	12:45																1	CI-CA & CS +									
8061	1-4-01	12:45																1	EXPL CI-CA									
8062	1-4-01	12:50																1	CO ₂									
8052	1-4-01	12:55																1	CAPILLARY GC FINGERPRINT									
9831	1-4-01	12:45																1	TOTAL LEAD									
9814	1-4-01	12:45																1	TDS									
9830	1-4-01	12:50																1	Please Hold									
9815	1-4-01	12:50																1	Turn-around									
																			• ASAP									
																			• 24 hrs									
																			48 hrs									
																			Standard									
																			Remarks									
																			ID #									
																			ONLY									
																			LAB									
																			LAB									

Prk (Contractor), Yellow & White (Lab) * Pre-scheduling is recommended

CHAIN OF CUSTODY RECORD AND ANALYSIS REQUEST FORM

Client: PCATA VISTA		Phone ()		No. coolers this shipment		Carrier: A.H. MICROSERVICES		LAB ONLY ID #	
Address: 1255 W JEFFERSON		Project Director		No. of CONTAINERS		Air/Fuel No. A.H. MICROSERVICES		Turn-around	
Project Name		Project Manager: MERSANT		Total: 2		EPA BTEX		- ASAP	
Project Location: LA CA 90066		Project No.		Sample Description: A.H. ANALYSIS		C1-C4 & C5 +		- 24 hrs	
Sample Signature		Preservative		Task No.		EXPL C1-C4		48 hrs	
		Util Dies Ker Unknown		Sample Description		CO ₂		Standard	
		Waste Oil				FLUORESCENCE			
		PTT No.				CAPILLARY GC FINGERPRINT			
		Other				TOTAL LEAD			
		Container				TDS			
		Size Type							
		ZC P. 10							
		GRA							
		COM P							
		WATER							
		SOIL							
		DEPTH							
		Time							
		Date							
		Field ID							
		8048		1-4-01 11:30 AM				1	
		8047		1-4-01 11:30 AM				2	
		8044		1-4-01 11:30 AM				3	
		8045		1-4-01 11:30 AM				4	
		8051		1-4-01 11:30 AM				5	
		8050		1-4-01 11:30 AM				6	
		8056		1-4-01 11:30 AM				7	
		8057		1-4-01 11:30 AM				8	
		8055		1-4-01 11:30 AM				9	
		8058		1-4-01 11:30 AM				10	

Signature	DATE	TIME	Received by	Signature	DATE	TIME	Remarks
	1-4-01	11:30 AM			1-4-01	5:00 PM	
	1-4-01	5:30 PM			1-4-01	11:30 AM	

Client: PLAYA VISTA		Phone ()		No. coolers this shipment: 0		Carrier: MAILED		Lab. Batch #	
Address: 1255 W JEFFERSON		Project Director: MERZING		Airbill No. A1H ANALYSES					
Project Name: LA CA 90066		Project Manager: MERZING							
Sample ID: 7078		Project No. 90066							

SAMPLE CHARACTERIZATION										PRESERVATIVE										UOI										Task No.									
Field ID	Date	Time	DEPTH	S O I L	W A T E R	C O M P	G R A B	Container	Size	Type	Is	Other	UOI	Dos	Ker	Unknown	Waste Oil	PTI No.	Task No.	Sample Description																			
7078	1-40-80	8:00	4'						22	P/B										A2H																			
7082	1-40-80	8:25																																					
7077	1-40-80	8:45																																					
7083	1-40-80	8:50																																					
7084	1-40-80	9:05																																					
7085	1-40-80	9:05																																					
8053	1-40-80	9:20																																					
8054	1-40-80	9:20																																					
8049	1-40-80	9:20																																					
8046	1-40-80	9:30																																					

No. of CONTAINERS		DATE		TIME		REMARKS	
2	2	1-40-80	5:00				

Field ID	Date	Time	Signature	DATE	TIME	REMARKS
7078	1-40-80	8:00	[Signature]	1-40-80	5:00	
7082	1-40-80	8:25	[Signature]	1-40-80	5:30	
7077	1-40-80	8:45	[Signature]	1-40-80	5:30	
7083	1-40-80	8:50	[Signature]	1-40-80	5:30	
7084	1-40-80	9:05	[Signature]	1-40-80	5:30	
7085	1-40-80	9:05	[Signature]	1-40-80	5:30	
8053	1-40-80	9:20	[Signature]	1-40-80	5:30	
8054	1-40-80	9:20	[Signature]	1-40-80	5:30	
8049	1-40-80	9:20	[Signature]	1-40-80	5:30	
8046	1-40-80	9:30	[Signature]	1-40-80	5:30	

Field ID	Date	Time	Signature	DATE	TIME	REMARKS
7078	1-40-80	8:00	[Signature]	1-40-80	5:00	
7082	1-40-80	8:25	[Signature]	1-40-80	5:30	
7077	1-40-80	8:45	[Signature]	1-40-80	5:30	
7083	1-40-80	8:50	[Signature]	1-40-80	5:30	
7084	1-40-80	9:05	[Signature]	1-40-80	5:30	
7085	1-40-80	9:05	[Signature]	1-40-80	5:30	
8053	1-40-80	9:20	[Signature]	1-40-80	5:30	
8054	1-40-80	9:20	[Signature]	1-40-80	5:30	
8049	1-40-80	9:20	[Signature]	1-40-80	5:30	
8046	1-40-80	9:30	[Signature]	1-40-80	5:30	

CHAIN OF CUSTODY RECORD
AND ANALYSIS REQUEST FORM

Client: PUDRA VISTA		Phone ()		Contractor COC #	
Address: 12555 W JEFFERSON		Project Director: JONES		Carrier: A & H	
Project Name: LA CA		Project Manager: MERSHAT		Airfill No. MICROSEPS	
Sender Signature: [Signature]		Project No. [Blank]		PA No. ANALYSIS	
No coolers this shipment					
No of CONTAINERS					
Total					
2					
LAB ONLY ID #					
Turn-around					
• ASAP					
• 24 hrs					
• 48 hrs					
• Standard					
Remarks					
Please Hold					
TDS					
TOTAL LEAD					
FLUORESCENCE					
CAPILLARY GC FINGERPRINT					
CO ₂					
EXPL C1-C4					
C1-C4 & C5 +					
TPH					
EPA BTEX					
EPA BTEX					
TPH					
C1-C4 & C5 +					
EXPL C1-C4					
CO ₂					
CAPILLARY GC FINGERPRINT					
FLUORESCENCE					
TOTAL LEAD					
TDS					
Please Hold					
Remarks					
1					
2					
3					
4					
5					
6					
7					
8					
9					
10					

Field ID	Date	Time	Depth	Soil	Water	Comp	GRA	Container	Preservative	Uol	Dies	Ker	Unknown	Task No.	Sample Description
6085	1-30-1	2:45													A & H
6081		2:45													
6088		2:45													
6084		2:45													
6087		2:45													
6083		3:45													
6082		3:45													
7008		3:45													
7079		3:45													
7087		3:45													

Relinquished by	Signature	DATE	TIME	Received by	Signature	DATE	TIME
[Signature]	[Signature]	1-30-1	SP	[Signature]	[Signature]	1-4-01	4:30
[Signature]	[Signature]	1-4-01	5:00	FED EX	[Signature]		
[Signature]	[Signature]			Approved for Laboratory by	[Signature]	1/8/01	

MICROSEEPS, Inc.

220 William Pitt Way, Pittsburgh, PA 15238

Phone: (412) 826-5245 Fax: (412) 826-3433

Company Name:

Address:

Proj. Manager:

Proj. Location:

Proj. Number:

Phone #:

RAYA VISTA

1255 W JEFFERSON

WERSCHER

LA CA 30066

Fax #:

Sampler's signature



CHAIN-OF-CUSTODY RECORD

Note: Enter proper letters in Requested Analyses columns below.

Note: If analysis D, E, or K is selected, scratch (option) NOT wanted.

Analysis Options

<input checked="" type="checkbox"/> A	C1-C4	<input checked="" type="checkbox"/> G	Chlorinated HC
<input checked="" type="checkbox"/> B	Hydrogen & Helium	<input checked="" type="checkbox"/> H	BTEX
<input checked="" type="checkbox"/> C	Permanent Gases (CH ₄ , CO, CO ₂ , N ₂ , O ₂)	<input checked="" type="checkbox"/> I	BTEX & C5 - C10
<input checked="" type="checkbox"/> D	Mercury (Soil) or (Air **)	<input checked="" type="checkbox"/> K	TPH (C5 - C10) or (C4 - C12)
<input checked="" type="checkbox"/> E	TO-14 by GC/MS (Ambient) or (Source **)	<input checked="" type="checkbox"/> L	C11 - C18
<input checked="" type="checkbox"/> F	601 & 602 Compounds	<input checked="" type="checkbox"/> Other	Specify below.

* An additional 22 ml vial of sample is required when requested in combination with another analysis.

** Available upon request.

Collection		Number of Containers	"Summa" # if Can. used	Sample ID/Type	Sample Identification	Requested Analyses		Remarks
Date	Time					(A-H)	(Other)	
1-301	11/05	2		11	60907	A	H	
	11/105				6094			
	11/125				6089			
	11/135				6086			
	11/155				6095			
	11/155				6091			
	12/125				6092			
	12/125				6093			
	12/125				6096			
	12/125				6097			
	15/2				6079			
	15/2				6080			

Invoice to:

Relinquished by:

Company: EPI

Date: 1-301

Time: 5p

Relinquished by:

Company:

Date:

Time:

Relinquished by:

Company: COM

Date: 1-4-01

Time: 4:30

WHITE COPY: Laboratory to return.

YELLOW COPY: Laboratory to return.

118/61

P0101057

----- Camp Dresser & McKee -----
 ----- Location: Playavista -----
 ----- Concentrations in PPMV -----

Sample ID	Benzene	Toluene	Ethyl Benzene	MP Xylene	Ortho Xylene	Lab ID	Date Sampled	Date Received	Date Analyzed	Analyst
6090	< 0.07	< 0.07	< 0.07	< 0.07	< 0.07	W101 354	01/03/01	01/08/01	01/11/01	JL
6094	< 0.07	< 0.07	< 0.07	< 0.07	< 0.07	W101 355	01/03/01	01/08/01	01/11/01	JL
6089	< 0.07	< 0.07	< 0.07	< 0.07	< 0.07	W101 356	01/03/01	01/08/01	01/11/01	JL
6086	< 0.07	< 0.07	< 0.07	< 0.07	< 0.07	W101 357	01/03/01	01/08/01	01/11/01	JL
6095	< 0.07	< 0.07	< 0.07	< 0.07	< 0.07	W101 358	01/03/01	01/08/01	01/11/01	JL
6091	< 0.07	< 0.07	< 0.07	< 0.07	< 0.07	W101 359	01/03/01	01/08/01	01/11/01	JL
6092	< 0.07	< 0.07	< 0.07	< 0.07	< 0.07	W101 360	01/03/01	01/08/01	01/11/01	JL
6093	< 0.07	< 0.07	< 0.07	< 0.07	< 0.07	B33 290	01/03/01	01/08/01	01/11/01	JL
6096	< 0.07	0.08	< 0.07	< 0.07	< 0.07	B33 291	01/03/01	01/08/01	01/11/01	BM
6097	< 0.07	0.08	< 0.07	< 0.07	< 0.07	B33 292	01/03/01	01/08/01	01/11/01	BM
6079	< 0.07	0.10	< 0.07	< 0.07	< 0.07	B33 293	01/03/01	01/08/01	01/11/01	BM
6080	< 0.07	< 0.07	< 0.07	< 0.07	< 0.07	B33 294	01/03/01	01/08/01	01/11/01	BM
6085	< 0.07	0.10	< 0.07	< 0.07	< 0.07	B33 295	01/03/01	01/08/01	01/11/01	BM
6081	< 0.07	0.08	< 0.07	< 0.07	< 0.07	B33 296	01/03/01	01/08/01	01/11/01	BM
6088	< 0.07	0.11	< 0.07	< 0.07	< 0.07	B33 297	01/03/01	01/08/01	01/11/01	BM
6084	< 0.07	0.14	< 0.07	< 0.07	< 0.07	B33 298	01/03/01	01/08/01	01/11/01	BM
6087	< 0.07	0.10	< 0.07	< 0.07	< 0.07	B33 299	01/03/01	01/08/01	01/11/01	BM
6083	< 0.07	0.13	< 0.07	< 0.07	< 0.07	B33 300	01/03/01	01/08/01	01/11/01	BM
6082	< 0.07	< 0.07	< 0.07	< 0.07	< 0.07	B33 301	01/03/01	01/08/01	01/11/01	BM
7088	< 0.07	< 0.07	< 0.07	< 0.07	< 0.07	B33 302	01/03/01	01/08/01	01/11/01	BM
7079	< 0.07	< 0.07	< 0.07	< 0.07	< 0.07	B33 303	01/03/01	01/08/01	01/11/01	BM
7087	< 0.07	0.15	< 0.07	< 0.07	< 0.07	B33 306	01/03/01	01/08/01	01/11/01	BM
7080	< 0.07	< 0.07	< 0.07	< 0.07	< 0.07	B33 307	01/03/01	01/08/01	01/11/01	BM
7081	< 0.07	0.12	< 0.07	< 0.07	< 0.07	B33 308	01/03/01	01/08/01	01/11/01	BM
7086	< 0.07	< 0.07	< 0.07	< 0.07	< 0.07	B33 309	01/03/01	01/08/01	01/11/01	BM
7078	< 0.07	< 0.07	< 0.07	< 0.07	< 0.07	B33 310	01/04/01	01/08/01	01/11/01	BM
7082	< 0.07	< 0.07	< 0.07	< 0.07	< 0.07	B33 311	01/04/01	01/08/01	01/11/01	BM
7077	< 0.07	< 0.07	< 0.07	< 0.07	< 0.07	B33 312	01/04/01	01/08/01	01/11/01	BM
7083	< 0.07	< 0.07	< 0.07	< 0.07	< 0.07	B33 313	01/04/01	01/08/01	01/11/01	BM
Detection Limits	0.07	0.07	0.07	0.07	0.07					

6/1/01

Analyst _____

Reviewed _____

P0101057

----- Camp Dresser & McKee -----
 ----- Location: Playavista -----
 ----- Concentrations in PPMV -----

Sample ID	Benzene	Toluene	Ethyl Benzene	M/P Xylene	Ortho Xylene	Lab ID	Date Sampled	Date Received	Date Analyzed	Analyst
7084	< 0.07	< 0.07	< 0.07	< 0.07	< 0.07	B33 314	01/04/01	01/08/01	01/12/01	BM
7085	< 0.07	< 0.07	< 0.07	< 0.07	< 0.07	B33 315	01/04/01	01/08/01	01/12/01	BM
8053	< 0.07	< 0.07	< 0.07	< 0.07	< 0.07	B33 316	01/04/01	01/08/01	01/12/01	BM
8054	< 0.07	< 0.07	< 0.07	< 0.07	< 0.07	B33 317	01/04/01	01/08/01	01/12/01	BM
8049	< 0.07	< 0.07	< 0.07	< 0.07	< 0.07	B33 318	01/04/01	01/08/01	01/12/01	BM
8046	< 0.07	< 0.07	< 0.07	< 0.07	< 0.07	B33 319	01/04/01	01/08/01	01/12/01	BM
8048	< 0.07	< 0.07	< 0.07	< 0.07	< 0.07	W101 361	01/04/01	01/08/01	01/11/01	JL
8047	< 0.07	< 0.07	< 0.07	< 0.07	< 0.07	W101 362	01/04/01	01/08/01	01/11/01	JL
8044	< 0.07	< 0.07	< 0.07	< 0.07	< 0.07	W101 363	01/04/01	01/08/01	01/11/01	JL
8045	< 0.07	< 0.07	< 0.07	< 0.07	< 0.07	W101 364	01/04/01	01/08/01	01/11/01	JL
8051	< 0.07	< 0.07	< 0.07	< 0.07	< 0.07	W101 365	01/04/01	01/08/01	01/11/01	JL
8050	< 0.07	< 0.07	< 0.07	< 0.07	< 0.07	W101 366	01/04/01	01/08/01	01/11/01	JL
8056	< 0.07	< 0.07	< 0.07	< 0.07	< 0.07	W101 367	01/04/01	01/08/01	01/11/01	JL
8057	< 0.07	< 0.07	< 0.07	< 0.07	< 0.07	W101 370	01/04/01	01/08/01	01/11/01	JL
8055	< 0.07	< 0.07	< 0.07	< 0.07	< 0.07	W101 371	01/04/01	01/08/01	01/11/01	JL
8058	< 0.07	< 0.07	< 0.07	< 0.07	< 0.07	W101 372	01/04/01	01/08/01	01/11/01	JL
8059	< 0.07	< 0.07	< 0.07	< 0.07	< 0.07	W101 373	01/04/01	01/08/01	01/11/01	JL
8063	< 0.07	< 0.07	< 0.07	< 0.07	< 0.07	W101 374	01/04/01	01/08/01	01/11/01	JL
8060	< 0.07	< 0.07	< 0.07	< 0.07	< 0.07	W101 375	01/04/01	01/08/01	01/11/01	JL
8061	< 0.07	< 0.07	< 0.07	< 0.07	< 0.07	W101 376	01/04/01	01/08/01	01/11/01	JL
8062	< 0.07	< 0.07	< 0.07	< 0.07	< 0.07	W101 377	01/04/01	01/08/01	01/11/01	JL
8052	< 0.07	< 0.07	< 0.07	< 0.07	< 0.07	W101 378	01/04/01	01/08/01	01/11/01	JL
9831	< 0.07	< 0.07	< 0.07	0.34	0.08	W101 379	01/04/01	01/08/01	01/11/01	JL
9814	< 0.07	< 0.07	< 0.07	< 0.07	< 0.07	W101 380	01/04/01	01/08/01	01/11/01	JL
9830	< 0.07	< 0.07	< 0.07	< 0.07	< 0.07	W101 381	01/04/01	01/08/01	01/11/01	JL
9815	< 0.07	< 0.07	< 0.07	< 0.07	< 0.07	W101 382	01/04/01	01/08/01	01/11/01	JL
9816	< 0.07	< 0.07	< 0.07	< 0.07	< 0.07	W101 383	01/04/01	01/08/01	01/11/01	JL
9817	< 0.07	< 0.07	< 0.07	< 0.07	< 0.07	W101 384	01/04/01	01/08/01	01/11/01	JL

Detection Limits 0.07 0.07 0.07 0.07 0.07

6/1/01

Analyst _____

Reviewed _____

P010047

----- Camp Dresser & McKee -----
 ----- Location: Playavista -----
 ----- Concentrations in PPMV -----

Sample ID	Benzene	Toluene	Ethyl Benzene	M/P Xylene	Ortho Xylene	Lab ID	Date Sampled	Date Received	Date Analyzed	Analyst
9818	<0.07	<0.07	<0.07	<0.07	<0.07	W101 324	01/05/01	01/08/01	01/09/01	JL
9829	<0.07	<0.07	<0.07	<0.07	<0.07	W101 323	01/05/01	01/08/01	01/09/01	JL
9828	<0.07	<0.07	<0.07	<0.07	<0.07	W101 322	01/05/01	01/08/01	01/09/01	JL
9827	<0.07	<0.07	<0.07	<0.07	<0.07	W101 321	01/05/01	01/08/01	01/09/01	JL
9819	<0.07	<0.07	<0.07	<0.07	<0.07	W101 320	01/05/01	01/08/01	01/09/01	JL
9820	<0.07	<0.07	<0.07	<0.07	<0.07	W101 319	01/05/01	01/08/01	01/09/01	JL
9821	<0.07	<0.07	<0.07	<0.07	<0.07	W101 318	01/05/01	01/08/01	01/09/01	JL
9822	<0.07	<0.07	<0.07	<0.07	<0.07	W101 317	01/05/01	01/08/01	01/09/01	JL
9823	<0.07	<0.07	<0.07	<0.07	<0.07	W101 316	01/05/01	01/08/01	01/09/01	JL
9824	<0.07	<0.07	<0.07	<0.07	<0.07	W101 315	01/05/01	01/08/01	01/09/01	JL
9825	<0.07	<0.07	<0.07	<0.07	<0.07	W101 314	01/05/01	01/08/01	01/09/01	JL
9826	<0.07	<0.07	<0.07	<0.07	<0.07	W101 313	01/05/01	01/08/01	01/09/01	JL
9804	<0.07	<0.07	<0.07	<0.07	<0.07	W101 338	01/05/01	01/08/01	01/10/00	JL
9805	<0.07	<0.07	<0.07	<0.07	<0.07	W101 337	01/05/01	01/08/01	01/10/00	JL
9806	<0.07	<0.07	<0.07	<0.07	<0.07	W101 336	01/05/01	01/08/01	01/10/00	JL
9807	<0.07	<0.07	<0.07	<0.07	<0.07	W101 335	01/05/01	01/08/01	01/10/00	JL
9808	<0.07	<0.07	<0.07	<0.07	<0.07	W101 334	01/05/01	01/08/01	01/10/00	JL
9809	<0.07	<0.07	<0.07	<0.07	<0.07	W101 333	01/05/01	01/08/01	01/10/00	JL
9810	<0.07	<0.07	<0.07	<0.07	<0.07	W101 332	01/05/01	01/08/01	01/10/00	JL
9811	<0.07	<0.07	<0.07	<0.07	<0.07	W101 331	01/05/01	01/08/01	01/10/00	JL
9812	<0.07	0.10	<0.07	<0.07	<0.07	W101 328	01/05/01	01/08/01	01/10/00	JL
9813	<0.07	<0.07	<0.07	<0.07	<0.07	W101 327	01/05/01	01/08/01	01/09/00	JL
9798	<0.07	<0.07	<0.07	<0.07	<0.07	W101 326	01/05/01	01/08/01	01/09/00	JL
9799	<0.07	<0.07	<0.07	<0.07	<0.07	W101 325	01/05/01	01/08/01	01/09/00	JL
9800	<0.07	<0.07	<0.07	<0.07	<0.07	W101 350	01/05/01	01/08/01	01/10/00	JL
9801	<0.07	<0.07	<0.07	<0.07	<0.07	W101 349	01/05/01	01/08/01	01/10/00	JL
9802	<0.07	0.09	<0.07	<0.07	0.06	W101 348	01/05/01	01/08/01	01/10/00	JL
9803	<0.07	<0.07	<0.07	<0.07	<0.07	W101 347	01/05/01	01/08/01	01/10/00	JL
9832	<0.07	<0.07	<0.07	<0.07	<0.07	W101 346	01/05/01	01/08/01	01/10/00	JL
9834	<0.07	<0.07	<0.07	<0.07	0.26	W101 345	01/05/01	01/08/01	01/10/00	JL
9833	<0.07	<0.07	<0.07	<0.07	<0.07	W101 344	01/05/01	01/08/01	01/10/00	JL
9835	<0.07	<0.07	<0.07	<0.07	<0.07	W101 343	01/05/01	01/08/01	01/10/00	JL
9836	<0.07	<0.07	<0.07	<0.07	<0.07	W101 342	01/05/01	01/08/01	01/10/00	JL
9837	<0.07	<0.07	<0.07	<0.07	<0.07	W101 341	01/05/01	01/08/01	01/10/00	JL
9838	<0.07	<0.07	<0.07	<0.07	<0.07	W101 340	01/05/01	01/08/01	01/10/00	JL
9839	<0.07	<0.07	<0.07	<0.07	<0.07	W101 339	01/05/01	01/08/01	01/10/00	JL
9840	<0.07	<0.07	<0.07	<0.07	<0.07	W101 351	01/05/01	01/08/01	01/10/00	JL

Detection Limits 0.07 0.07 0.07 0.07 0.07

6/1/01

Analyst

Reviewed

P0101069

----- Camp Dresser & McKee -----
 ----- Location: Playavista -----
 ----- Concentrations in PPMV -----

Sample ID	Benzene	Toluene	Ethyl Benzene	M/P Xylene	Ortho Xylene	Lab ID	Date Sampled	Date Received	Date Analyzed	Analyst
9848	< 0.07	< 0.07	< 0.07	< 0.07	< 0.07	B33 258	01/06/01	01/09/01	01/10/01	BM
9847	< 0.07	< 0.07	< 0.07	< 0.07	< 0.07	B33 259	01/06/01	01/09/01	01/10/01	BM
9846	< 0.07	< 0.07	< 0.07	< 0.07	< 0.07	B33 260	01/06/01	01/09/01	01/10/01	BM
9845	< 0.07	0.16	< 0.07	< 0.07	< 0.07	B33 261	01/06/01	01/09/01	01/10/01	BM
9844	< 0.07	0.12	< 0.07	< 0.07	< 0.07	B33 262	01/06/01	01/09/01	01/10/01	BM
9843	< 0.07	< 0.07	< 0.07	< 0.07	< 0.07	B33 263	01/06/01	01/09/01	01/10/01	BM
9842	< 0.07	0.08	< 0.07	< 0.07	< 0.07	B33 264	01/06/01	01/09/01	01/10/01	BM
9841	< 0.07	0.07	< 0.07	< 0.07	< 0.07	B33 265	01/06/01	01/09/01	01/10/01	BM
9852	< 0.07	0.09	< 0.07	< 0.07	< 0.07	B33 266	01/06/01	01/09/01	01/10/01	BM
9851	< 0.07	0.12	< 0.07	0.09	0.10	B33 267	01/06/01	01/09/01	01/10/01	BM
9849	< 0.07	0.57	0.09	0.32	0.18	B33 268	01/06/01	01/09/01	01/10/01	BM
9850	< 0.07	0.28	< 0.07	0.15	0.09	B33 269	01/06/01	01/09/01	01/10/01	BM
9856	< 0.07	0.12	< 0.07	< 0.07	< 0.07	B33 270	01/06/01	01/09/01	01/10/01	BM
9855	< 0.07	6.40	0.19	2.60	1.10	B33 273	01/06/01	01/09/01	01/10/01	BM
9854	< 0.07	< 0.07	< 0.07	< 0.07	< 0.07	B33 274	01/06/01	01/09/01	01/10/01	BM
9853	< 0.07	0.09	< 0.07	< 0.07	< 0.07	B33 275	01/06/01	01/09/01	01/10/01	BM
9857	< 0.07	1.80	< 0.07	0.48	0.19	B33 276	01/06/01	01/09/01	01/10/01	BM
9858	< 0.07	< 0.07	< 0.07	< 0.07	< 0.07	B33 277	01/06/01	01/09/01	01/10/01	BM
9859	< 0.07	0.07	< 0.07	< 0.07	< 0.07	B33 278	01/06/01	01/09/01	01/10/01	BM
9860	< 0.07	0.12	< 0.07	< 0.07	< 0.07	B33 279	01/06/01	01/09/01	01/10/01	BM
9862	< 0.07	0.13	< 0.07	< 0.07	< 0.07	B33 280	01/06/01	01/09/01	01/10/01	BM
9861	< 0.07	< 0.07	< 0.07	< 0.07	< 0.07	B33 281	01/06/01	01/09/01	01/10/01	BM
9863	< 0.07	0.10	< 0.07	< 0.07	< 0.07	B33 282	01/06/01	01/09/01	01/10/01	BM
9864	< 0.07	< 0.07	< 0.07	< 0.07	< 0.07	B33 283	01/06/01	01/09/01	01/10/01	BM
9865	< 0.07	0.11	< 0.07	< 0.07	< 0.07	B33 284	01/06/01	01/09/01	01/10/01	BM
9866	< 0.07	< 0.07	< 0.07	< 0.07	< 0.07	B33 285	01/06/01	01/09/01	01/10/01	BM
Detection Limits	0.07	0.07	0.07	0.07	0.07					

6/1/01

Analyst _____

Reviewed _____