



Visual Preference Survey – Residential Neighborhoods

PURPLE LINE TRANSIT NEIGHBORHOOD PLAN

Which images contain key elements of the built environment that should be incorporated in new developments on the following types of residential neighborhoods? Place a **GREEN** dot next to the image that **BEST** exemplifies your preference and a **RED** dot next to the image that **LEAST** exemplifies your preference. In addition, place a **BLUE** dot next to the building element that is **MOST IMPORTANT** to you.

Lower-Scale Multifamily Neighborhoods

Higher-Scale Multifamily Neighborhoods

Building Scale and Placement – Overall size of a building and its location on a lot



2 stories, portion of building along street



2 stories, minimal front yard



3 stories, with courtyard



3 stories, minimal front yard

Building Scale and Placement – Overall size of a building and its location on a lot



4 stories with courtyard/forecourt



4 stories, all set back



5+ stories, with front yard



5+ stories, minimal front yard

Building Massing – How the overall volume of a building is arranged



Solid building mass



Stepped back at upper stories



Partially set back



Solid building mass with changes in height

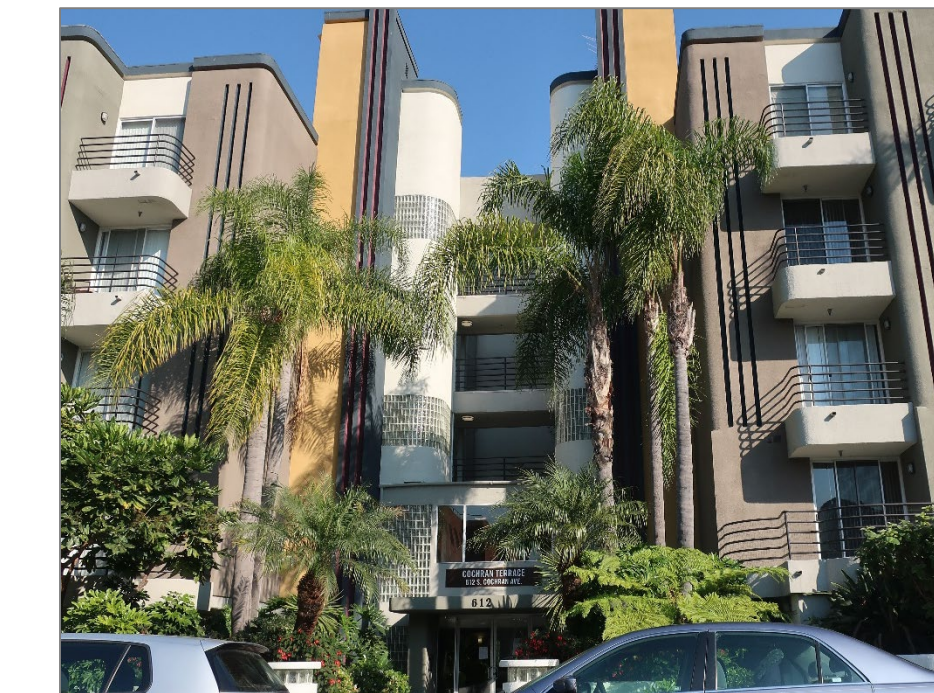
Building Massing – How the overall volume of a building is arranged



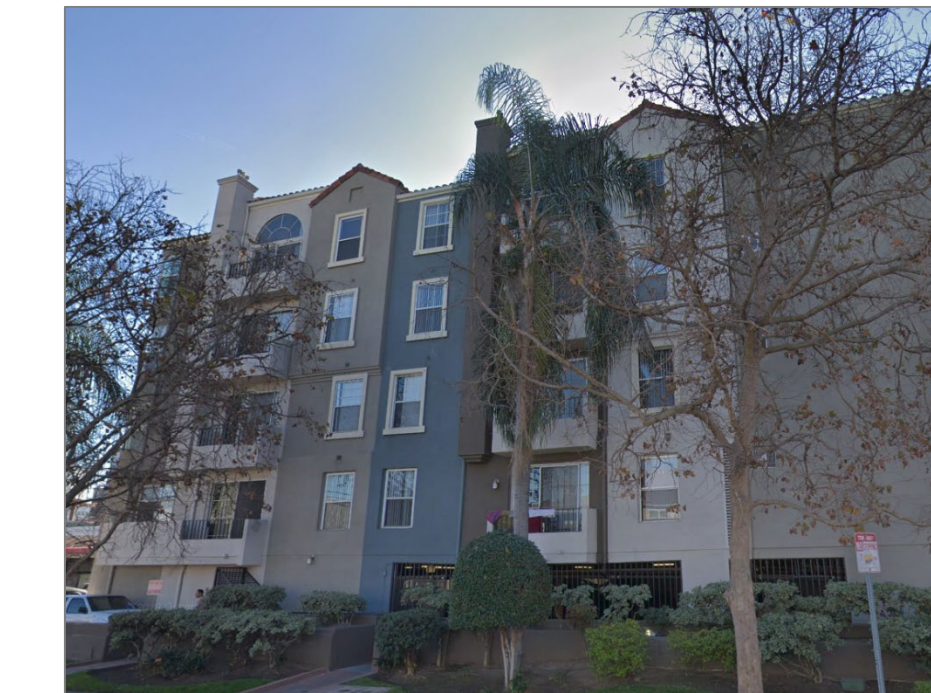
Solid building mass



Stepped back at upper stories



Set forward with articulation



Solid building mass with changes in height

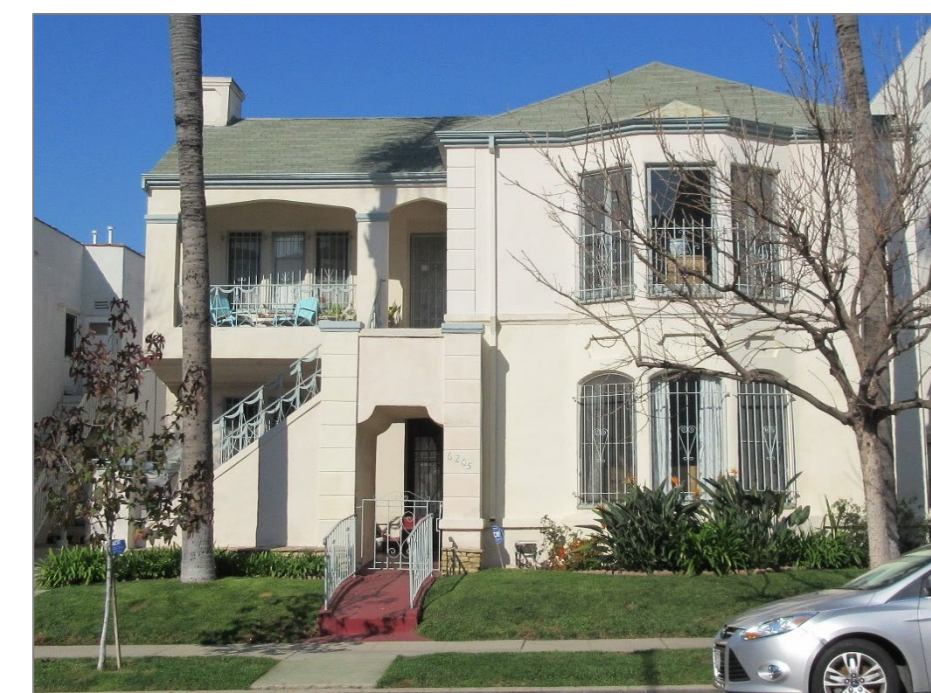
Roof Lines – The visual appearance of the top of a building



Flat



Gable



Hipped



Mansard

Roof Lines – The visual appearance of the top of a building



Flat



Flat with articulation



Gable



Mansard

Street Frontage – How a building interacts with the public realm at the ground floor



Central entrance, less/smaller windows



Central entrance, more/bigger windows



Offset entrance, less/smaller windows



Offset entrance, more/bigger windows

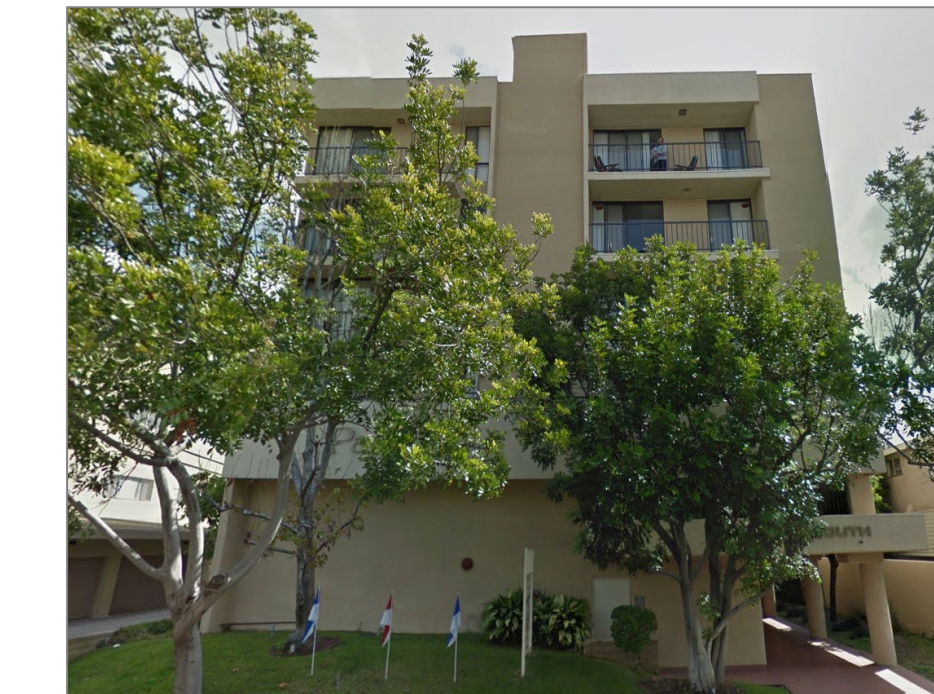
Street Frontage – How a building interacts with the public realm at the ground floor



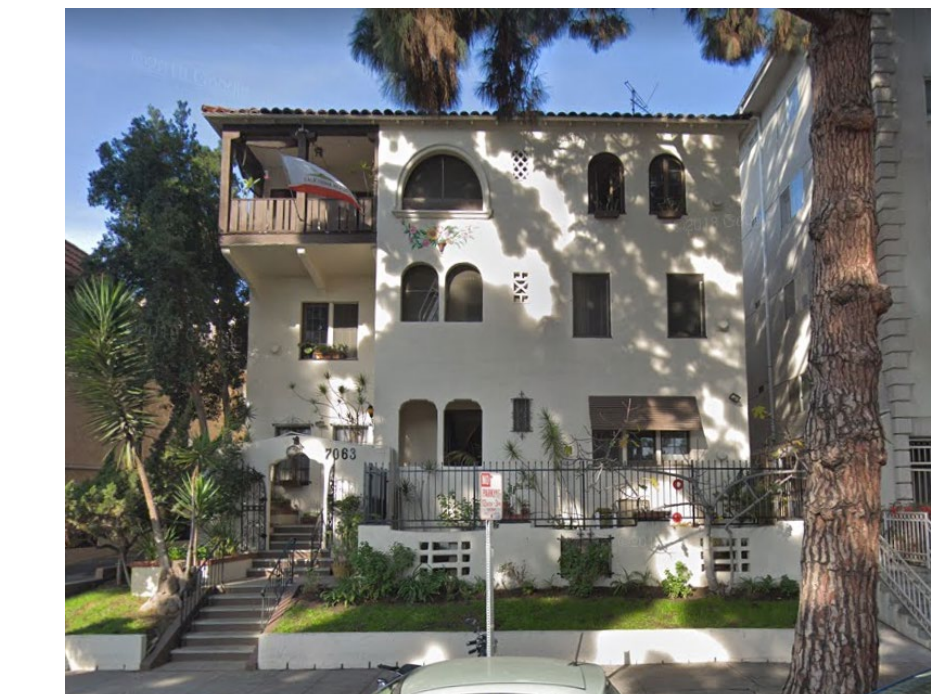
Central entrance, less/smaller windows



Central entrance, more/bigger windows



Offset entrance, less/smaller windows



Offset entrance, more/bigger windows

Parking Location – Where cars are located within the building and in relation to the street



Dingbat-style parking



Garage/driveway in front

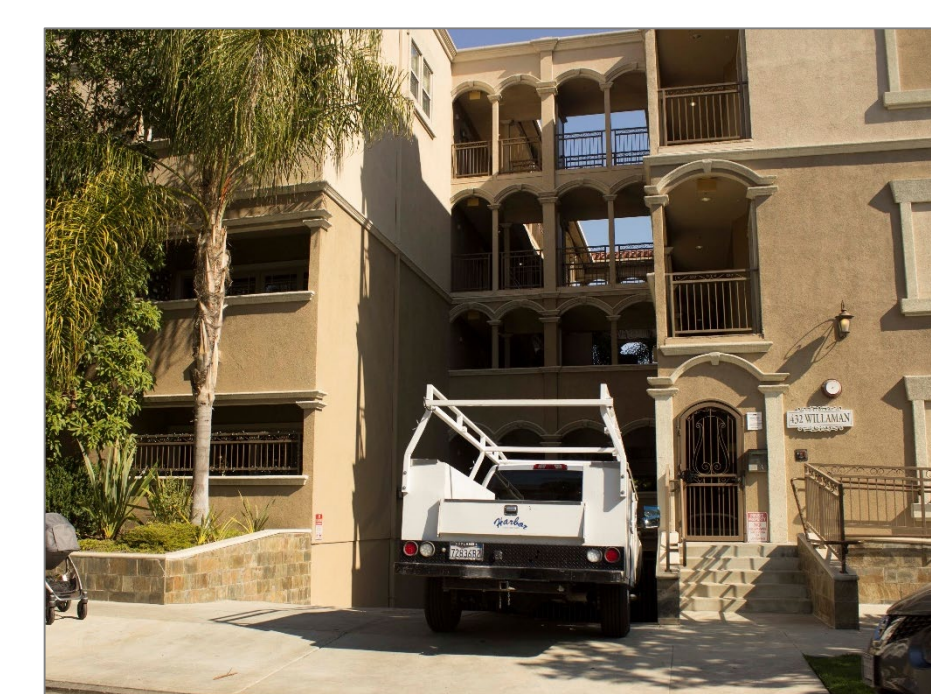


Visible surface parking



No visible parking

Parking Location – Where cars are located within the building and in relation to the street



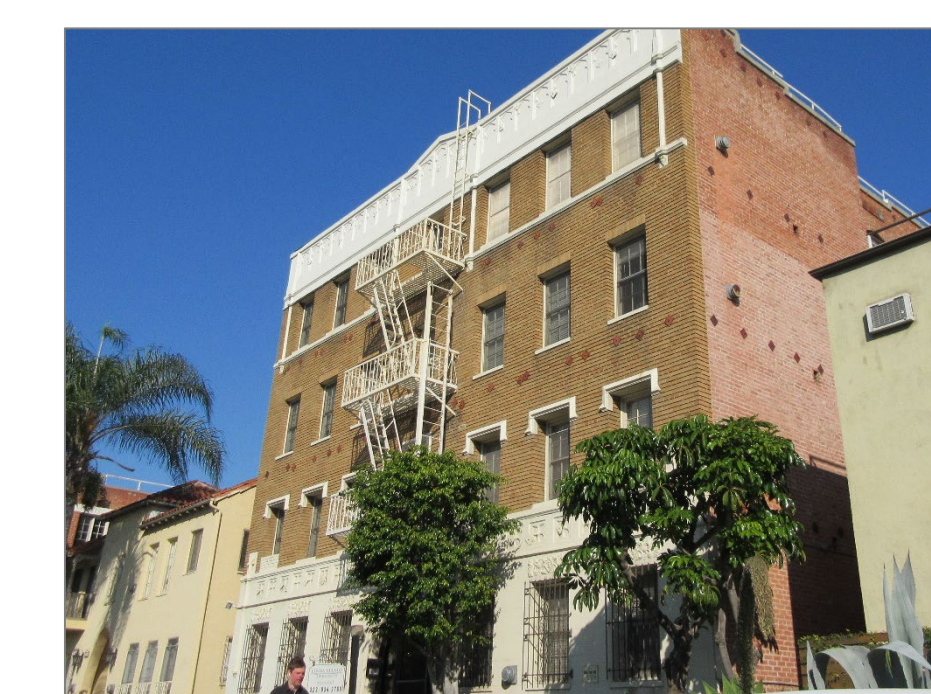
Single, central driveway



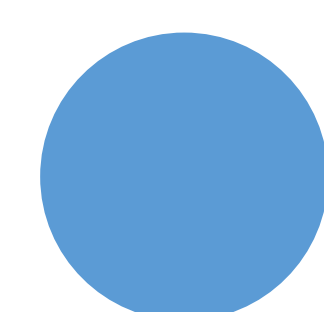
Single, offset driveway



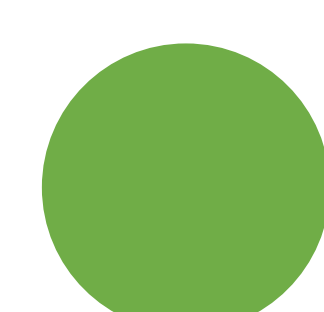
Multiple driveways



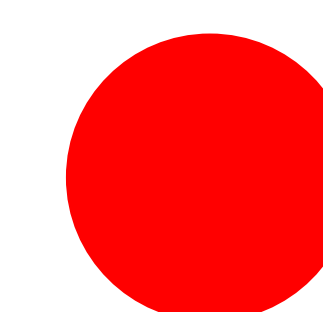
No visible parking



Your most important building element



Your **MOST** preferred feature within each building element



Your **LEAST** preferred feature within each building element

