



## ATTEND THE LOS ANGELES HISTORIC NEIGHBORHOODS CONFERENCE OCTOBER 15<sup>TH</sup>

The Department of City Planning and the Los Angeles Conservancy invite you to attend the **L.A. Historic Neighborhoods Conference**, on **Saturday, October 15**, 8:30 to 4:30 p.m. at St. John's Cathedral, 514 W. Adams Blvd. (at Figueroa), City Historic-Cultural Monument #516. To register, please click [here](#):

The registration fee (\$30 by October 14, or \$35 at the door) covers all conference activities, including morning refreshments, lunch, and your choice of walking



St. John's Cathedral

portunity to meet and connect with neighborhood leaders focused on historic preservation and neighborhood conservation from across the city, to share ideas and build relationships.

**2) Charles Phoenix!:** The day will kick off with a dose of humor -- an hour-long presentation by showman, tour guide, and author [Charles Phoenix](#), the "Ambassador of Americana," who will take us on a whirlwind adventure through Los Angeles' neighborhoods, exploring archi-

tecture, themed environments, and more!

Here are six great reasons to attend this year's conference:

1) **Relationships and Networking:** It's a great op-

3) **HPOZ Awards Ceremony:** As part of our lunch program, we'll be honoring the project teams, property  
(Continued on page 2)

## CITY INTERVENES TO SAVE HOMES OF ENTERTAINMENT ICONS WALT DISNEY AND BOB HOPE

In recent weeks, the Office of Historic Resources has taken steps to protect from potentially imminent demolition two Los Angeles homes associated with international icons of the entertainment industry, Walt Disney and Bob Hope.

In July, Office of Historic Resources staff became aware that the house at 4406 Kingswell Avenue in Los Feliz, a property from which Walt Disney began his animation work in 1923, had been sold and was facing demolition. With the City Council on recess, Director of Planning Vincent P. Bertoni on July 20 initiated an Historic-Cultural Monument appli-

cation, as permitted under the City's Cultural Heritage Ordinance, which triggered a temporary stay on demolition while the Cultural Heritage Commission considered the nomination.

The Department took this relatively rare step to pursue a Director-initiated nomination given the potentially imminent threat to the house, the previous identification of the property by SurveyLA, and the iconic status of Walt Disney within the history of Los Angeles and Southern California.

(Continued on page 4)

### INSIDE THIS ISSUE:

*OHR to Prepare Citywide African American Context Statement* 4

*OHR Publishes Jewish History Context* 5

*L.A.'s Newest Historic-Cultural Monuments* 6



## ATTEND THE L.A. HISTORIC NEIGHBORHOODS CONFERENCE OCTOBER 15TH

(Continued from page 1)

owners, and community leaders responsible for exemplary projects in Los Angeles' Historic Preservation Overlay Zones (HPOZs), or historic districts.

**4) The Venue:** Experience the historic [1925 St. John's Cathedral](#), one of Los Angeles' most monumental examples of Romanesque Revival architecture, with a grand array of golden-hued mosaics and Italian marble columns and altar.

**5) The Sessions:** This year's discussions promise to be lively and informative, with a theme of "community character." There's something for everyone—from sessions on neighborhood conservation tools and re:code LA to "You're an HPOZ, Now What?," focused on strategies for neighborhood

engagement and building community support. We'll also feature half-hour "power sessions" on topics such as architectural styles and small-lot subdivisions.

**6) Neighborhood Walking Tours:** In the afternoon, you'll have a chance to see some of Los Angeles' most significant historic neighborhoods and experience first-hand the architecture, the community, and the "lessons learned" from your choice of four historic districts near the conference venue, through walking tours of the **University Park HPOZ**, **North University Park Specific Plan Area**, **Adams-Normandie HPOZ**, and the proposed **27th and 28th Street HPOZ**.

We look forward to seeing you on October 15th!

## SURVEYLA FINDINGS FOR BEL AIR-BEVERLY CREST HIGHLIGHT SIGNIFICANT RESIDENTIAL ARCHITECTURE

The findings for SurveyLA, the Los Angeles Historic Resources Survey, continue to be posted on the SurveyLA web site. The survey project is now in its final phase, with the final field surveys scheduled to be completed for Northeast Los Angeles in early 2017.

In this issue, we feature the survey findings for an area completed earlier in the project, the Bel Air-Beverly Crest Community Plan Area, which boasts some of the most prestigious neighborhoods in Los Angeles, including Bel Air, the northern portion of Holmby Hills, Beverly Glen, Laurel Canyon, Wonderland Park, Coldwater Canyon, Franklin Canyon, Benedict Canyon, Roscomare Valley, and Bel Air Crest. This article is the 18th in a series of features on some of the interesting "finds" from SurveyLA.

For more information on these findings, click [here](#).

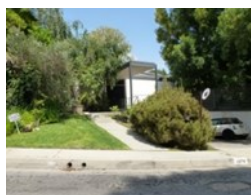
**Judy Garland Residence**, 1231 Stone Canyon Rd. (1938), a Traditional Ranch House, designed by Wallace Neff, that was constructed for actress and singer Judy Garland, who lived at the house with her mother from 1938 to 1943, the period when she rose to stardom in "The Wizard of Oz."



**Smith House**, 969 Stone Canyon Rd. (1937), an excellent example of Spanish Colonial Revival style architecture that also appears to be the first of architect

Cliff May's spec houses in Los Angeles.

**230 Carolwood Dr.** (1925), an excellent example of residential architecture designed by Gordon Kaufmann, in a style that reflects French Revival (Norman)/Provincial influences.



**Korsen Residence**, 1074 Angelo Dr. (1958), an excellent intact example of Mid-Century Modern residential architecture designed by Craig Ellwood with post and beam construction and clean lines.

**100 Bel Air Rd.** (1924), a Spanish Colonial Revival style building that originally housed the sales offices for the Bel Air Estates subdivision and now houses the offices of the Bel Air Association.



**2136 Benedict Canyon Dr.** (1915), an excellent example of Craftsman residential architecture, which is rare within this neighborhood.

**965 Casiano Rd.** (1953) and **1118 Casiano Road** (1940), two excellent intact examples of Cape Cod Ranch houses, custom-







designed by Gerard Colcord.

**Dawnridge**, 1354 Dawnridge Dr. (1949), home of the renowned costume, set, and interior designer Tony Duquette

from 1949 to 1999, which is

most famous for its gardens and interiors.

**212 Copa de Oro Rd.** (1928), an excellent example of Spanish Colonial Revival residential architecture designed by Wallace Neff, exhibiting complexity and quality of design.



**243 Delfern Dr.** (1939), a Georgian Revival home designed by Paul R. Williams which was the residence of Sonja Henie, the Norwegian figure skater and film star. She was a three-time Olympic

champion (1928, 1932 and 1936), and lived here during the height of her film career.

**Ginger Rogers Residence**, 1605 Gilcrest Dr. (1937), a Traditional Ranch house with American Colonial Revival influences that was the home of actress, dancer, and singer Ginger Rogers.



**Franklin Canyon Reservoir Caretaker's Residence**, Intersection of Lake Dr. and Franklin Canyon Dr. (1940), a residence for the caretaker of a reservoir was built by the Department of Water and Power in 1914; the residence may

have been constructed in 1940 by the WPA, as many other improvements in the park were constructed that year. This lower

portion

of the canyon, known as Franklin Canyon Ranch, was once the summer retreat of Edward L. Doheny, the oil baron.

**The Mansion**, 2451 Laurel Canyon Blvd. (1925), a residential estate with Mediterranean Revival architecture that is significant for its association with a remarkable succession of high profile celebrities, including Beatrice Houdini, widow of illusionist Harry Houdini (1920s), actor Errol Flynn (1930s-40s), organized crime boss Benjamin "Bugsy" Siegel (1940s-50s), and musician Jimi Hendrix (1960s).



**2266, 2291, 2315 San Ysidro Dr.** (1959-60), three excellent examples of Mid-Century Modern architecture designed by Richard Dorman.

**1335 Shadybrook Dr.** (1959), an excellent example of a Mid-Century Modern residence with an A-frame structure and distinctive Tiki/Polynesian influences.



**UCLA Hannah Carter Japanese Garden**, 10619 Belagio Rd. (1961), designed by Nagao Sakurai; it is located behind a perimeter fence and bamboo and is not visible from the public right-of-way, but the site is well-documented as an excellent ex-

ample of a Japanese style garden.

(Continued on page 5)

## What Is SurveyLA?

SURVEYLA: THE LOS ANGELES HISTORIC RESOURCES SURVEY PROJECT is the first-ever comprehensive inventory of our city's historic resources.

The survey findings have a multiplicity of benefits and uses: they help direct future growth, shape the revision of Los Angeles' 35 Community Plans, streamline environmental review processes, provide opportunities for public education, assist in disaster planning, and spur heritage tourism and the marketing of historic neighborhoods and properties.

The J. Paul Getty Trust and the City of Los Angeles have entered into a grant agreement for SurveyLA under which the Getty has committed to providing up to \$2.5 million to the project, subject to matching requirements by the City. Field surveys and evaluations will occur through the end of 2016. The Getty Conservation Institute (GCI) is also providing technical and advisory support for SurveyLA. For more information visit the SurveyLA website, [www.SurveyLA.org](http://www.SurveyLA.org).





## CITY INTERVENES TO SAVE HOMES OF ENTERTAINMENT ICONS WALT DISNEY AND BOB HOPE

(Continued from page 1)

Further research by the OHR, supplemented by several historians of Walt Disney, substantiated the significance of this house to the genesis of the Walt Disney Company. Walt Disney relocated to Los Angeles in August 1923 and moved into this house, a 1914 one-story Craftsman home, with his uncle, Robert Disney, Robert's second wife, Charlotte, and his cousin, Robert Jr. While living at the property, he utilized the original, detached garage (relocated in 1984 to the Stanley Ranch Museum in Garden Grove) to take single-frame shots and build his own animation table. Walt Disney used the 4406 Kingswell address on his business cards and, while living at the property, on October 16, 1923, signed a contract to produce his first animation series, the "Alice Comedies."



Front view of Disney house

The Cultural Heritage Commission unanimously approved the Historic-Cultural Monument application on September 15<sup>th</sup>, finding that the property reflects the cultural history of the community and the nation, as well as a significant historic personage as the birthplace of the Walt Disney Company, Walt Disney's first home in Los Angeles, and the location of Disney's first studio. The City Council has 90 days from the Commission action, until mid-December, to consider the nomination.

In September, OHR staff became aware that demolition permits

had been requested at the Department of Building and Safety for buildings on the Bob and Dolores Hope estate, located at 10350 Moorpark St. in Toluca Lake. The 2013 SurveyLA historic resources survey of the Toluca Lake community had identified the estate as appearing eligible for historic designation. The estate, with a main house of approximately 15,000 square feet and set on a 5.2 acre site, was constructed in 1939. The English Traditional style home was designed by architect Richard Finkelhor, who designed and renovated homes for numerous Hollywood stars. In the mid-1950s, architect John Elgin Woolf, known for his Hollywood Regency-style, was commissioned to remodel and update the estate.

Bob Hope had one of the most successful and prolific careers of any 20<sup>th</sup> century entertainer, as a comic actor, comedian, television host, and 19-time host of the Academy Awards. In the local community, Hope and his long-time film co-star Bing Crosby were for decades the most prominent residents of Toluca Lake.

Councilmember David Ryu initiated the Historic-Cultural Monument application for the Hope Estate on September 16, 2016, which triggered a stay on the issuance of any demolition permits.

The Cultural Heritage Commission is expected to consider the nomination during November.

## OHR TO PREPARE CITYWIDE AFRICAN AMERICAN CONTEXT

The Office of Historic Resources has received a \$40,000 grant from the State Office of Historic Preservation to prepare Los Angeles' first citywide historic context statement on the City's African American history.

Since the earliest days of the Los Angeles pueblo, African Americans have been a vital presence in the city. The Central Avenue corridor, just southeast of downtown, is well-known as a vibrant and long-term hub of African American culture in Los Angeles. But beyond Central Avenue, African Americans settled in many other areas of Los Angeles, including Watts, Boyle Heights, Little Tokyo (during World War II), West Adams/West Jefferson, Leimert Park, Baldwin Hills, Venice and Pacoima. By the 1930s, Los Angeles had emerged as the most important center of African American settlement in the West.

This context will build upon a previous "African American Multiple Property Documentation Form" completed in 2008, which was focused on the Central Avenue corridor and only identified resources eligible for the National Register. This new context statement will be citywide in scope and will identify resources eligible for local and state registers, in addition to the National Register.

Although there are over 25 designated resources associated with African American history in Los Angeles, many more have been identified through SurveyLA. This context will provide a clear-framework for their evaluation and support further designations

(Continued on Page 6)





## SURVEYLA FINDINGS FOR BEL AIR-BEVERLY CREST HIGH-LIGHT SIGNIFICANT RESIDENTIAL ARCHITECTURE

(Continued from Page 3)

**10164 Cielo Dr.** (1961), a Contemporary Ranch house that is excellent example of hillside home engineering, exhibiting a dramatic cantilever and exposed structural elements.



**Hearn Residence**, 10511 Selkirk Lane (1952), an excellent and well-preserved example of the work of architect Lloyd Wright.



### 9318 Readcrest

**Dr.** (1926), an excellent and unique example of the Tudor Revival style. These were originally greenhouses that flanked the tennis court on the Marion Davies property in Beverly Hills, moved here and converted into a residence in 1957.

**Walstrom Residence**, 10500 Selkirk Lane (1969), a remarkably intact example of the work of architect John Lautner.



**Stone Canyon Residential Historic District**, comprised of the 60 single-family residences on either side of Stone Canyon Drive, between Chalon Road and Taranto Way, north of Sunset Boulevard. The district is made up entirely of single-family Period Revival residences, mostly dating from the 1930s and 1940s. Like Bel Air Estates, the neighborhood was the home to numerous individuals in the entertainment industry including actress and singer Judy Garland, actress Dolores Del Rio, actor Claude Rains, and actress Greer Garson. The notable architects of the period were commissioned to design houses in the neighborhood including Wallace Neff, Cliff May, H. Roy Kelley, and Gerard Colcord.



## OHR PUBLISHES JEWISH HISTORY CONTEXT

The Office of Historic Resources has released a new citywide Jewish historic context statement on the history of Los Angeles' Jewish community. The context's five major themes are:

This context is a component of Los Angeles' Citywide Historic Context Statement for SurveyLA and provides guidance to field surveyors in identifying and evaluating potential historic resources relating to Los Angeles' rich Jewish history. It was prepared by GPA Consulting, with input from a wide array of experts on Los Angeles Jewish history, and was partially funded with a grant from the California Office of Historic Preservation.

Following a broad historical overview on settlement and development patterns of Los Angeles Jewry, the context focuses on key themes and geographic areas that help yield an understanding of the historic resources associated with the



Workmen's Circle School, Boyle Heights, 1935

**Religion and Spirituality**, addressing the religious and spiritual aspects of Jewish identity, including synagogues, schools, and cemeteries.

**Social Clubs**, including benevolent societies and social welfare organizations, foreign aid and Zionist groups; immigrant and refugee societies; social and fraternal organizations, community centers, and unions.

**Public and Private Health and Medicine**, addressing major Jewish medical organizations, including hospitals,

(Continued on Page 7)



## OHR TO PREPARE AFRICAN-AMERICAN CONTEXT

(Continued from Page 4)

of significant resources to African American history. The context narrative will cover key themes such as religion and spirituality, social and civic life, commerce, labor history, deed restrictions and segregation, civil rights, architecture, and the entertainment industry, including film, music and radio.

The lead consultant on the project is GPA Consulting, which also served as the lead consultant for the Latino, LGBT, and Jewish Historic Context Statements for SurveyLA. The project

team will include Allison Rose Jefferson, a historian with a PhD in history from UC Santa Barbara and a Master's in Heritage Conservation from USC, with particular expertise in regional African American history.

The project includes community outreach meetings and activities in early 2017, leading up to completion of the context statement by September 2017. The OHR is greatly appreciative of the continued support of the State Office of Historic Preservation in making possible these important context statements on Los Angeles' rich cultural history.

## L.A.'S NEWEST HISTORIC-CULTURAL MONUMENTS

The Cultural Heritage Commission and City Council designated seven new Historic-Cultural Monuments (HCMs) in June through September 2016. Los Angeles' newest HCMs include the following:

### **HCM #1124, Arcady Apartments (2615-2627 West Wilshire Blvd)**

In the Beaux Arts style with a "U"-shaped plan, the 1927 Arcady Apartments were designed by prominent architects Albert Walker and Percy Eisen. Originally opened as a luxury apartment hotel, the building later housed a Howard Johnson hotel and Fifield Manor, a home for the elderly. Constructed of poured concrete with cement plaster detailing, the Arcady has an embellished façade with quoins topped with ornamental capitals that give the appearance of soaring columns and monumentality.



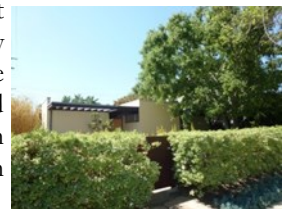
### **HCM #1125, Forve-Pettebone Building (510-514 S. Broadway)**

One of the earliest properties constructed on the east side of South Broadway, the 1905 Forve-Pettebone is a brick commercial vernacular building known for some of its earliest tenants, the Forve-Pettebone Company. Incorporated in 1901, Forve-Pettebone was an electric and gas light fixture company responsible for extensive exterior lamp post installations throughout the city, particularly on Broadway, Spring, Hill, and Main streets.

### **HCM #1126, Samuel Miller House (6400 Drexel Avenue)**

The 1951 Samuel Miller House is located on the southwest cor-

ner of Drexel and La Jolla Avenues in Beverly Grove. The house was designed by master architect Richard Neutra in the Mid-Century Modern style for Samuel Miller. The one-story residence has an "L" shaped plan that buffers an interior yard from the street while allowing easy flow from interior to exterior spaces.



### **HCM #1127, Ralph Johnson House (10261 Chrysanthemum Lane)**



Located in Bel-Air near the top of Beverly Glen Boulevard, the Ralph Johnson House was built in 1948 and designed by Harwell Hamilton Harris in the Mid-Century Modern style with heavy Craftsman influences. The house was built as a retirement home for Ralph Johnson and his wife and included quarters for their son on a separate level. Johnson worked in real estate as an escrow officer and trust officer, and later in life he founded the Alhambra Industrial Syndicate, developing a 100-acre industrial district in Alhambra.

### **HCM #1128, 125 South Wilton Drive Residence**

The residence at 125 South Wilton Drive, just south of Beverly Boulevard, was built in 1909. The original builder and owner are unknown. The property is located in John L. Plummer's 1907 Ridgewood Park subdivision on land that had previously been used as the Plummer family's vegetable and chicken farm. The house is designed in the Craftsman Style with Swiss Chalet and Japanese influences and features a square plan.





### HCM #1129, Knudsen House (2706 South Wigtown Road)

The 1933 Knudsen House is located at 2706 Wigtown Road in Cheviot Hills. It was designed by architect William J. Gage likely for the Knudsen family, owners of the successful Knudsen Dairy Company.

Gage is perhaps best known for his work on Beverly Hills City Hall. The Tudor Revival style home retains many of its original features including a steeply pitched roof, brick veneer, half-timbering, projecting window bays, exposed eaves, cantilevered second floor pop-outs, leaded glass casement windows, attached two car garage, and an overall asymmetrical form.

### HCM #1130, Hollywood Palladium (6201-6225 Sunset Boulevard)

The Palladium is located at the northwest corner of the intersection of Sunset Boulevard and North El Centro Avenue. Constructed by Hollywood producer Maurice Cohen in 1940 in the Streamline Moderne style, the building consists of a one-story structure with a full height mezzanine constructed of board-formed concrete. It has served as a historic venue for countless musical performances. The main facade along Sunset Boulevard features a central vertical blade type sign tower with the name "Palladium" spelled out in neon lit letters.



## OHR PUBLISHES JEWISH HISTORY CONTEXT

(Continued from Page 5)

clinics, and other organizations that provided health services for the poor and elderly.

**Commercial Identity**, focusing on the businesses that made important contributions to the development of the Jewish community and often became beloved neighborhood landmarks, including restaurants, delis, bakeries, banks and retail stores.

**Entertainment Industry**, highlighting the Los Angeles Jewish community's significant role in entertainment, starting with motion pictures, then moving on to music, radio, and television, as well as the places and homes associated with major Jewish entertainment figures.

Each theme contains a detailed historical narrative, a summary of designated and identified sites associated with each theme, as well as eligibility standards for survey evaluation of potential historic resources.

To review the entire document, click [here](#).



American Jewish University, 1970



Canter Brothers Delicatessen, Boyle Heights, 1939

**Office of Historic Resources**  
Department of City Planning  
200 N. Spring Street, Room 559  
Los Angeles, CA 90012  
(213) 978-1200

Office of Historic Resources Staff:  
Ken Bernstein, Manager  
Janet Hansen, Deputy Manager  
Lambert Giessinger, Preservation Architect  
Sara Delgadillo Cruz, Planning Assistant  
Melissa Jones, Planning Assistant

HPOZ Unit: Staff City Hall, Room 601  
Naomi Guth, City Planner  
Renata Dragland, City Planning Associate  
Steven Wechsler, City Planning Associate  
Ariane Briski, Planning Assistant  
Bradley Furuya, Planning Assistant  
Kimberly Henry, Planning Assistant  
Blair Smith, Planning Assistant