

A wide-angle photograph of the Los Angeles skyline, featuring numerous skyscrapers and a dense urban area. In the background, a range of mountains is visible under a clear sky. The entire image has a teal-blue color overlay.

LOS ANGELES DEPARTMENT OF CITY PLANNING

TODAY'S MEETING OBJECTIVES

- Help us identify community issues and opportunities
- What do you love about your neighborhood?
- How can your neighborhood be improved?
- What is your vision for your neighborhood for future generations?
- Provide feedback about goals in the existing Community Plan.

MEETING FORMAT

- Presentation
- Break Out Group Discussions
- Report Back
- Questions & Answers Session

OVERVIEW

- Introduction to Community Plans
- Outreach Plan: Listening Phase
- Next Steps
- Remaining Involved

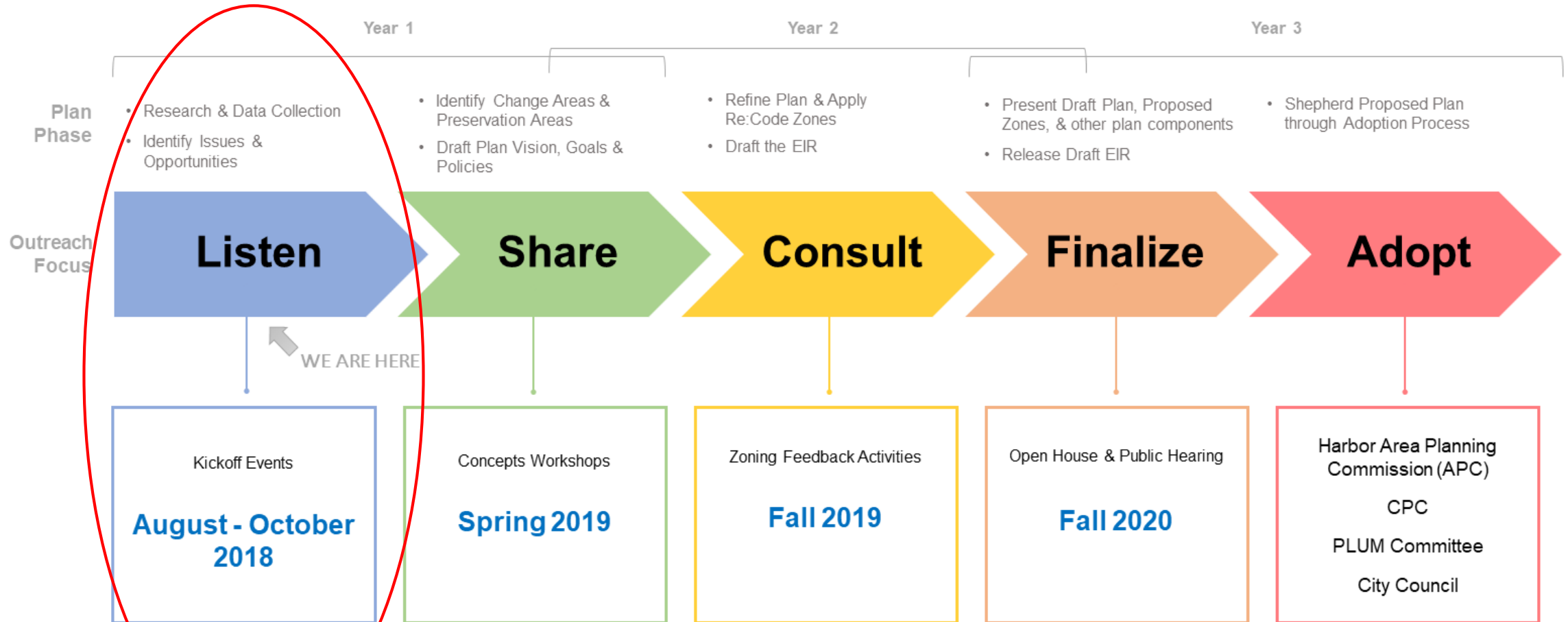
POLICY DOCUMENT

- **GOAL 1: PROVIDE A SAFE, SECURE AND HIGH QUALITY RESIDENTIAL ENVIRONMENT FOR ALL ECONOMIC, AGE, AND ETHNIC SEGMENTS OF THE WESTCHESTER-PLAYA DEL REY COMMUNITY.**
- Policies 1-1.1: Protect existing stable single family and low density residential neighborhoods, such as Kentwood, from encroachment by high density residential uses and other uses that are incompatible as to scale and character, or would otherwise diminish quality of life.
- Program: The Community Plan Map identifies areas where only single family residential development is permitted. These areas are protected by designating appropriate densities for each land use category designation and for reach corresponding zone, to minimize incompatible uses.

OVERVIEW

- Introduction to Community Plans
- Outreach Plan: Listening Phase
- Next Steps
- Remaining Involved

OUTREACH PLAN



OUTREACH PLAN - LISTEN

Year 1

Year 2

Year 3

Listen

Share

Consult

Finalize

Adopt

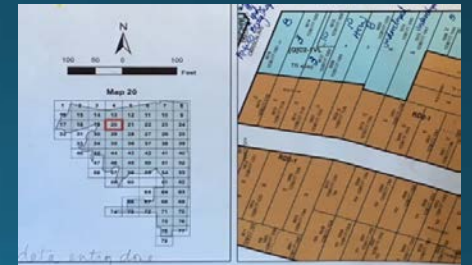


Public Outreach Tasks

- Neighborhood Councils
- Planning 101: Community Planning
- Kick-off Events
- Community Events
- Surveys

Plan Development Tasks

- Background research
- Data collection
- Field visits
- Land use surveys
- Identify issues and opportunities



OVERVIEW

- Introduction to Community Plans
- Outreach Plan: Listening Phase
- Next Steps
- Remaining Involved

Next Steps (over next 6-8 months)

- Pop Up at Local Events
- Attend smaller Community Stakeholder Meetings
- Office Hours
- Walking Tours
- Youth Activities

OUTREACH PLAN - SHARE

Year 1

Year 2

Year 3

Listen

Share

Consult

Finalize

Adopt

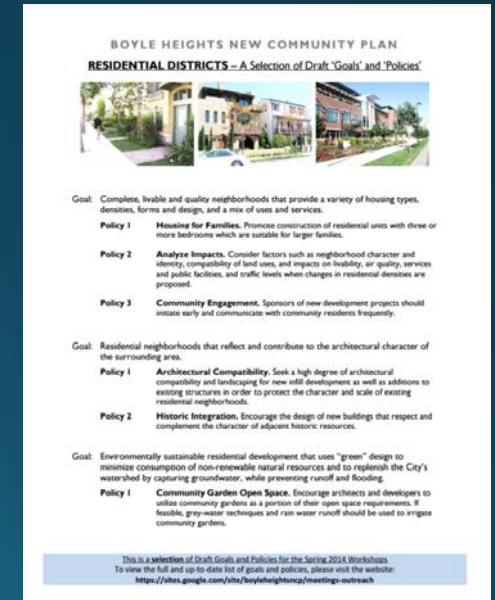


Public Outreach Tasks

- Concepts Workshops
- Other outreach tasks needed to achieve the outreach goal

Plan Development Tasks

- Draft the policy vision (goals and policies)
- Identify zoning concepts



OVERVIEW

- Introduction to Community Plans
- Outreach Plan: Listening Phase
- Next Steps
- Remaining Involved

WAYS TO STAY INVOLVED

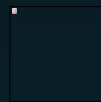
- Complete a survey
- Check out the website: planningthewestside.org
- Invite us to stakeholder meetings
- Join your Neighborhood Council Land Use Committee or special Adhoc Community Planning group
- Form a working group with fellow community stakeholders

FOR MORE INFORMATION:

WESTSIDE COMMUNITY PLANS


planningthewestside.org

Planning.thewestside@lacity.org



BREAK-OUT GROUP DISCUSSIONS

Tips for Productive Discussions

- 
- Let one person speak at a time
 - Help to make sure everyone gets equal time to give input
 - Keep your input concise so others have time to participate
 - Actively listen to others and seek to understand their perspectives
 - Offer ideas to address questions and concerns raised by others