



UltraSystems
environmental • management • planning

CERTIFICATION STATEMENT

May 13, 2014

The attached Quarterly Site Monitoring Status Report for the Sunshine Canyon Landfill dated May 13, 2014, is the First Quarterly Report for 2014, issued by UltraSystems. This report covers the monitoring period from January 1, 2014 through March 31, 2014 and is prepared for the City of Los Angeles Department of City Planning and the County of Los Angeles Department of Regional Planning.

I, James T. Aidukas, Project Manager for the Mitigation Monitoring Services of the Sunshine Canyon Landfill, certify that the statements in the Quarterly Report and the referenced monthly reports reflect the site conditions observed and compliance status noted by me and other qualified experts during the stated site visits.

Signed,

James T. Aidukas
Project Manager

**Sunshine Canyon Landfill
Independent Monitor
Quarterly Site Monitoring Status Report
January 1, 2014 – March 31, 2014**

Prepared For:

City of Los Angeles Department of City Planning

And

County of Los Angeles Department of Regional Planning



Prepared By:



16431 Scientific Way
Irvine, California 92618

Prepared On:

May 15, 2014

Contents

Quarterly Status Report	1
Site Visits During the Quarter	2
Definition of Terms	2
Status Summary.....	2
Compliant.....	2
Non-Compliant.....	3
Further Review Needed.....	3
Summary of Requested Documents	17
Conclusions	17

Sunshine Canyon Landfill Mitigation Monitoring – 2014 First Quarter Summary/ City
(see Excel spreadsheets)

Sunshine Canyon Landfill Mitigation Monitoring – 2014 F First Quarter Summary/ County
(see Excel spreadsheets)

Appendices

Appendix I – Excel Summary Further Review Needed Comments Reference I-a through I-d

Appendix II – Photo Location Map and Relevant Site Photos

Appendix III – Quarterly Site Visits

Attendees by Date and Monitoring Site Reports

Appendix IV – Meeting Logs

Appendix V – Landfill Elevations

GPS Data Logs

GPS Elevation Maps

GPS Elevation Data Tables

Quarterly Status Report

This Quarterly Status Report is a compilation of the period's monthly Site Monitoring. After each site visit, the UltraSystems monitors who went to the Sunshine Canyon Landfill site each wrote a Mitigation Monitoring Site Report, updated the Mitigation Monitoring Summary Excel Tables for the City and County of Los Angeles noting any conditions and/or mitigation measures that need further review, and documented these areas in an appendix for that site visit date. Any issues that required immediate attention were reported to Republic staff and the appropriate staff at the City of Los Angeles Planning Department, the County of Los Angeles Department of Regional Planning, the County of Los Angeles Department of Public Works and the Sunshine Canyon Landfill Local Enforcement Agency (SCL-LEA).

The Sunshine Canyon Landfill City and County Summary Tables record each site visit and frequency of monitoring of specific conditions and/or mitigation measures, by date. When a condition and/or mitigation measure is monitored, a check mark is made under the date that it was monitored, and the status of being compliant with the conditions and/or mitigation measures' requirements observed during monitoring is recorded. Tasks with a yearly or non-ongoing monitoring frequency are denoted by a forward slash (/) in subsequent date columns. In the status column, the letter "C" is put next to the task if it is Compliant; the letters "NC" are noted if the task status is Non-Compliant; and the letters "FRN" are used if Further Review is Needed for meeting the requirements of the conditions and/or mitigation measures.

Under the Further Review Needed/ Comment column, observed conditions that have been noted as "FRN" in the status column refer to appendices which detail what was observed during the site monitoring. When the conditions and/or mitigation measures that were previously noted as "FRN" are fully compliant, an "R" is placed in the Resolved column and a "C" replaces the "FRN" in the status column. Also noted in the FRN-Comment column are those action items that would improve monitoring efficiency by having reports and documents readily available. These are summarized in the Compliant with Comments section of the monthly monitoring records and the Summary of Requested Documents of the Quarterly Reports. The City and County Excel Spreadsheets record the site conditions observed during monitoring.

This Quarterly Report provides the City of Los Angeles Department of Planning and the County of Los Angeles Department of Regional Planning with a concise status of the Mitigation Measure Monitoring for the period of January 1, 2014 to March 31, 2014. It includes:

1. The City and County Mitigation Monitoring Summary Excel Tables for March 2014. These tables record the areas of monitoring completed during the first quarter of 2014 and the status of being compliant;
2. A Status Summary of Non-Compliant, Further Review Needed and Compliant with the requirements of the conditions and/or mitigation measures;
3. Photo Location Map and Relevant Site Photos showing site conditions of key areas of the landfill during the quarter;
4. Site visit attendees by date of site visit and the mitigation monitoring report for each monitor;

5. Meeting logs documenting any meetings with Republic Services staff and/or public agencies and the topics discussed; and
6. Any site monitoring documenting site changes.

Site Visits During the Quarter

Four site visits were performed by UltraSystems during the January through March 2014 quarter in order to observe operational site activities and determine compliant status with conditions and/or mitigation measures. They were performed on January 15, 2014; February 5, 2014; February 19, 2014; and March 12, 2014. The previously discussed conditions and/or mitigation measures were tracked by each specialist who visited, and observations were documented. Site conditions were noted to be: Compliant, Non-Compliant, or Further Review Needed. If a Condition was found to be Non-Compliant or observed as having Further Review Needed, a reference was made to an appendix which details what was observed by the monitor.

Definition of Terms

Compliant is defined as complying with the City and County conditions and/or mitigation measures.

Non-compliant is defined as not complying with the City and County conditions and/or mitigation measures.

Further Review Needed is defined as implementing plans (agency-approved, if required) to fully comply with a condition and/or mitigation measure. Some plans, especially vegetation, require an extended time frame, and immediate compliance is not possible.

Further Review Needed/ Comments is defined as comments documenting site conditions observed during monitoring visits that are not fully compliant but action is being taken in order to obtain full compliance with conditions and/or mitigation measures. Recommendations from the monitor, as appropriate, and status from Republic Services (Republic) may also be given. Comments are also made for compliant conditions where the comment notes action that may be taken to provide documents to improve monitoring efficiency and/or document issues observed during the monitoring.

Resolved is defined as action taken or activities completed to fully comply with conditions and/or mitigation measures.

Status Summary

This section summarizes the conditions and/or mitigation measures that were monitored during the quarterly reporting period and their respective statuses. The Sunshine Canyon Mitigation Monitoring Spreadsheets for the City and County show the conditions and/or mitigation measures monitored during the quarter. Also included in this report are relevant photos in Appendix II.

Compliant

The majority of the conditions and/or mitigation measures monitored were observed to be compliant. There are City and County conditions which are compliant, but are noted as

having corresponding comments that refer to the appendices. The Compliant with Comments section of the monthly monitoring records provide a summary of these comments where monitoring efficiency would be improved by having reports and documents readily available and/or document issues observed during monitoring. These are summarized in the Summary of Requested Documents in the Quarterly Report.

Non-Compliant

During UltraSystems' four site visits, no Non-Compliant conditions and/or mitigation measures were noted. Also, it must be understood that any monitoring related to landfill gas and odors are not part of the UltraSystems Monitoring Program at this time. These issues are currently being handled by a multi-agency team, which is led by the South Coast Air Quality Management District (SCAQMD).

Further Review Needed

The following conditions and/or mitigation measures were found not to be fully compliant, but were being worked on in order to obtain full compliance. This section summarizes the progress being made toward being fully compliant. When a condition and/or mitigation measure progresses from FRN to fully compliant, it is noted as Resolved in this section.

Q-B.2.c (City)

Ancillary Uses and Facilities. The subject property may only be used for the following uses and facilities. These ancillary uses and facilities described in the July 1997 Draft Subsequent EIR, pages 2-38 through 2-43, and may be located on the applicant's property generally in conformance with the diagram attached as Exhibit e-4, and during the life of the landfill, may be moved or relocated following commencement of landfilling operations as necessary to accommodate development of the ultimate landfill footprint.

Biota-4.13 (County)

All oak trees will be counted when removed to verify that adequate mitigation has been provided in accordance with the Oak Tree Mitigation Plan.

Biota-4.27 (County)

Venturan Coastal Sage Scrub: A detailed conceptual mitigation plan shall be prepared by the permittee and shall contain specific information on planting, maintenance, and monitoring. A revegetation plan that includes coastal sage scrub restoration can feasibly occur onsite. The implementation of this plan will provide onsite mitigation greater than 1:1 to offset the loss of coastal sage scrub.

Biota-4.29 (County)

San Diego Horned Lizard: Impact on the San Diego horned lizard can be mitigated to a level of less than significant by restoring coastal sage scrub habitat. This will create a temporal loss of the species, but the population should recover following restoration of this habitat. Topsoils should be selected that are friable to suit lizard habitat requirements.

Biota-4.30 (County)

California Gnatcatcher: Surveys shall be conducted for California gnatcatchers prior to Game Permit onsite grading to determine the status of this Game species within development areas.

Biota-4.33 (County)

Migratory Bird Treaty Act: To prevent the loss of an active migratory bird nest, vegetation shall not be cleared during the breeding season (i.e. March 15 to August 1).

Biota-4.34 (County)

Raptor nests: If habitat removal is proposed during the raptor breeding season (i.e. March to July), a survey shall be conducted for active nesting areas.

Current Status/Comments – The impacts to trees need to be approved by the City Street Department. Biological, archeological, and paleontological assessments must be performed and provided to the appropriate agencies prior to grading, if required.

Q-C.10.c (City)

The operator shall submit, as part of its annual report, an evaluation of the feasibility of beneficial uses of the landfill gas collected at the site such as landfill-gas-to-energy.

Odor/Landfill Gas - 7.07 (County)

The permittee will recover and sell as much gas as is technically and economically feasible to reduce total air quality emissions from the landfill operations. It is expected that the technical and economic feasibility of commercial recovery and sale of landfill gas as a renewable energy resource will occur at levels below 40 MMCFD. The gas collection system will be installed in increments to allow for maximum gas recovery.

Gas - 52 (County)

To the extent technically and economically feasible, the Permittee shall use Landfill gas for energy generation at the Facility or other beneficial uses, rather than flaring, and shall obtain all applicable local, state, and/or federal approvals for any such use. Notwithstanding the foregoing, the Permittee shall be exempt from this Condition No. 52 if, as a 'part of its annual report required by Part X of the IMP, the Permittee determines that any such activity or project is infeasible, which determination shall be subject to the review and approval of the Director of Public Works.

The Permittee shall also install and maintain a landfill gas collection system complying with SCAQMD requirements, which uses best available control technology to control the lateral migration of gases to the satisfaction of the Director of Public Works, County LEA, and SCAQMD. In addition to the other requirements of this Condition No. 52, Landfill gas flares shall be installed below the adjacent interior ridges of the site, unless otherwise required by the SCAQMD, and the flames shall be totally contained within the stacks. Flame arrestors shall be provided to the satisfaction of the County Forester and Fire Warden.

Current Status/Comments – The gas-to-energy facility was having foundations being poured in January 2014 for the landfill gas pre-treatment equipment skids. During the February 19, 2014 site monitoring, we met with the DTE representative and the gas-to-energy facility construction manager to obtain an updated schedule for power sales. The start of commissioning of the facility is now early May 2014. The initial run test of the gas turbine generators is scheduled for July 8, 2014, with electric power sales in August 2014.

T-4 (City)

Prepare a plot plan ["fire plan"] to the satisfaction of the Fire Department.

a. immediate access fire plan [now]

b. plot plan for the future facilities will be submitted when these are implemented

Fire Service - 12.03 (County)

The permittee shall maintain onsite fire response capabilities, construct access road, provide water tanks, water mains, fire hydrants and fire flows and perform brush clearance to the satisfaction of the County Forester and Fire Warden. The landfill will comply with all applicable County codes and ordinances which delineated the requirements for fire access, water mains, fire flows and fire hydrants, specifically defined by the County Fire Department. New construction water tanks, water mains and fire hydrants will be completed to meet the fire flow requirements of the Fire Department.

Current Status/Comments – There is no secondary access road now that the Flare 8 road has been eliminated. The need for having a secondary access road was discussed with the Republic operations manager with the possibility of just grading the City south top deck oil field road for passenger car use. The manager stated he would look into the feasibility of this option.

M-4.1.1(2) (City)

Areas outside of and above the cut and fill as shown on the conceptual grading plan shall not be graded, except for the development of ancillary facilities or other related improvements. Additional grading may be necessary for slope stability or drainage purposes. Prior to undertaking any grading activities, the Department of Building and Safety shall be notified and approve any additional grading based on engineering studies (in accordance with CCR Title 27) provided by the project proponent and independently evaluated by the Department of Building and Safety.

M-4.1.1(4) (City)

Grading that allows for construction of ancillary facilities outside of the landfill footprint or that has the potential to impact property beyond the boundary of the landfill shall be approved by the Department of Building and Safety.

M-4.1.1(5) (City)

All grading activities shall be in compliance with specific requirements provided in a comprehensive geotechnical report prepared specifically for the proposed project, including provisions for excavation approved by the Department of Building and Safety, City Engineer, City LEA and other Responsible Agencies.

Geology-1.07 (County)

All grading activities shall be in compliance with specific requirements provided in a comprehensive geotechnical report prepared specifically for the proposed Project, including provisions for excavation approved by the County Department of Public Works, the County Local Enforcement Agency (LEA) and other Responsible Agencies.

Current Status/Comments – It was observed during the March 12, 2014 site monitoring that the excavation plans for the realignment access road has portions outside of the cut and fill footprint of the landfill. The plans should be provided to and approved by the City of Los Angeles Department of Building and Safety and the County Department of Public Works to ensure appropriate grading and vehicular safety.

M-4.1.1(6) (City)

Revegetation and erosion control procedures on all exposed slopes shall be implemented. The erosion controls to be implemented at the site shall include soil stabilization measures and revegetation in accordance with the approved revegetation plan as approved by the City Building and Safety Department. Interceptor ditches shall be designed to divert storm runoff to a sedimentation basin.

M-4.2.11(23) (City)

Disturbed areas shall be revegetated with an interim ground cover as specified in the proposed revegetation program. Excavation will proceed in a manner to reduce the amount of graded areas at any given time.

M-4.2.12 (City)

Site Erosion

c. A temporary vegetation cover shall be established on all slopes that are to remain inactive for a period longer than 180 days.

Geology-1.13 (County)

Revegetation and erosion control of all exposed slopes will be an ongoing process. The erosion controls to be implemented at the site will include soil stabilization measures and revegetation in accordance with the approved Revegetation Program. The installation of interceptor ditches shall be designed for the diversion of storm runoff to sedimentation basins. Sediment traps will be used at points of runoff concentration along the perimeter of exposed slopes surfaces.

Condition: Approval of drainage plan. Retention of a consulting horticulturalist/Registered Professional Forester and an independent qualified biologist by the permittee for ongoing supervision of revegetation programs. Review and monitoring of planting programs by County Forester.

Geology-1.14 (County)

To prevent soil erosion on the face of the landfill, interim vegetation measures will be taken after placement of the temporary soil layer (even though the area may be disturbed by future filling operations). Vegetative cover will be placed as in the approved Revegetation Program.

Condition: Retention of a consulting horticulturalist/Registered Professional Forester and an independent qualified biologist by the permittee for ongoing supervision of revegetation programs. Review and monitoring of planting programs by County Forester.

Biota – 4.42 (County)

Areas inactive for 180 days or longer will be planted with interim vegetation as approved by County biologist. Records will be kept to track fill areas of the site which are transferred to an inactive status so that appropriate dust control and revegetation measures can be implemented.

Visual-10.08 (County)

Cover/Revegetation Requirements

The permittee shall comply with the following cover and re-vegetation requirements at the Landfill:

(1). The permittee shall apply a temporary hydroseed vegetation cover on any slope or other Landfill area that is projected to be inactive for a period greater than 180 days, as set forth in the IMP. The permittee shall promptly notify the County LEA and the Department of Public Works of any such slope or area;

Revegetation Requirements

(5) Notwithstanding the foregoing, the permittee shall not be bound by the previous provisions of this Condition No. 44, but instead by the requirements of the County LEA, so long as the Limits of Fill are not exceeded, if in consultation with the Department of Public Works, the County LEA determines that a different re-vegetation design or plan:

(1) would better protect public health and safety;

(2) would enable revegetation of the final slopes at least as well as shown in Exhibit "B" described in subsection D, above; and/or experts, including an independent, qualified bio(3) would be required because the minimum standards adopted by the CIWMB have been amended;

(6) the permittee shall employ an expert or biologist, to satisfy this Condition No. 44. Soil sampling and laboratory analysis shall be conducted in all areas that are required to be re-vegetated before any re-vegetation occurs to identify chemical or physical soil properties that may adversely affect plant growth or establishment. Soil amendments and fertilizer recommendations shall be applied and plant materials selected, based on the above referenced testing procedures and results. To the extent possible, plant types shall blend with species indigenous to the area, be drought tolerant, and be capable of rapid growth. The selected plants shall not include nonindigenous species that are likely to be invasive of adjacent natural areas.

Biota - Revegetation - 44.A (County)

A. The Permittee shall apply a temporary hydroseed vegetation cover on any slope or other Landfill area that is projected to be inactive for a period greater than 180 days, as set forth in the IMP. The Permittee shall promptly notify the SCL-LEA and the Department of Public Works of any such slope or area.

Revegetation - 44.F/44.F CUP (County)

F. The Permittee shall employ an expert or experts, including an independent, qualified biologist, to satisfy this Condition No. 44. Soil sampling and laboratory analysis shall be conducted in all areas that are required to be re-vegetated before any re-vegetation occurs to identify chemical or physical soil properties that may adversely affect plant growth or establishment. Soil amendments and fertilizer recommendations shall be applied and plant materials selected, based on the above-referenced testing procedures and results. To the extent possible, plant types shall blend with species indigenous to the area, be drought tolerant, and be capable of rapid growth. The selected plants shall not include non-indigenous species that are likely to be invasive of adjacent natural areas.

Current Status/Comments – In January 2014, no hydroseeding of interim or inactive areas had occurred. Republic staff stated that their biological consultant was reviewing the proposed seed mix and that soil sealant was being used to control dust on the unvegetated areas. The revegetation hydroseeding had not commenced as of the February 5, 2014 site monitoring visit. During the February 15, 2014 site monitoring the monitor was informed that the hydroseeding of inactive areas had not started due to delivery problems with the supplies needed for the hydroseeding company. Due to the high winds, there were some inactive areas that had blowing dust. In March 2014, the hydroseeding materials were received by the contractor and hydroseeding was scheduled to occur in April 2014.

M-4.2.11(20) (City)

Daily watering of active construction areas, active soil stockpiles, and all traveled unpaved roads shall be performed to minimize dust lofting from construction disturbances. Construction areas will also receive a soil stabilization (sealant) product if they are to be left unattended for periods in excess of 5 days and control is required.

M-4.2.12(28) (City)

Site Erosion

d. An SCAQMD approved soil stabilization (sealant) product shall be used to retard soil erosion and enhance revegetation. Soil sealant shall be applied when necessary to selected working areas of the landfill. The sealant will also be used as a binder or tackifier to hold seed during revegetation, mulch, and fertilizers in-place until grasses become established and stabilize on the landfill surface.

Air Quality - 6.01 (County)

Except during rainy conditions, any active area or active cover soil stockpile shall be moistened with water on a daily basis unless wind conditions dictate otherwise, in which case, soil sealant shall be used in addition to water.

Air Quality - 6.02 (County)

Dust Control will also be accomplished through the temporary revegetation of the landfill surface. A temporary revegetation of the landfill surface, and a temporary vegetation cover will be established on all slopes that are to remain inactive for a period longer than 180 days. Specifications of temporary revegetation measures will be provided in the Revegetation Plan submitted to the County biologist for approval, the Closure and Postclosure Maintenance Plans, the Condition Use Permit, and Conditions of Project Approval.

Fugitive Dust - 45.F (County)*Inactive Areas Monitoring*

F. Inactive areas of exposed dirt that have been sealed shall be regularly monitored to determine the need for additional sealing and to prevent unauthorized access that might disturb the sealant. If additional sealing treatment is required, the Permittee shall promptly apply such treatment to assure full control of the soil particles;

Current Status/Comments – During the January 15, 2014 site monitoring it was observed that areas of the City north benches were noted to have blowing dust during wind gusts. On February 5, 2014 the monitors observed exposed trash mixed in with cover soil near the City/County line on the top deck. Republic staff observed the condition and stated that action would be taken to correct any deficiencies. During the February 19, 2014 site monitoring it was observed that the high winds caused some localized blowing dust on the County top deck and on the City north slopes. Soil sealant should have been applied to the areas observed having blowing dust on January 15 and February 19, 2014.

M-4.2.13/29, 30, 32, 33, 34 (City)

The natural biological processes that generate odors in a landfill through anaerobic decomposition cannot be prevented or avoided. However, the LFGs shall be prevented from escaping to the atmosphere through the use of control measures. These measures include using daily and intermediate cover material over deposited wastes, filling any surface cracks with clean dirt as necessary, and extracting LFG through the use of an LFG collection and recovery system and destroying collected gases by combustion.

Operational techniques shall be utilized to control odor sources at the landfill. The size of the working face shall be limited so that the area of waste exposed to the atmosphere is kept to a minimum.

The LFG collection and recovery system shall be installed in phases as each portion of the landfill site is filled. The final system shall contain a network of gas extraction wells, collection system piping, and flaring facilities. Because the LFG generation begins at lower levels of volume and increases during the landfill site life, the gas will be flared initially until sufficient quantities are available for processing into electricity.

If an odor problem should develop, appropriate control measures shall be implemented. These measures include the application of additional dirt daily cover material or more frequent application of the cover material to seal the landfill surface, or adjustments to the wells, equipment, and operation of the LFG collection and recovery system.

To ensure that odors are kept to a minimum, the following odor/LFG monitoring program shall be implemented for the proposed landfill project. The monitoring program shall comply with the requirements of SCAQMD Rule 1150.1 and include:

- a. *Sample Probe Installation:* One monitoring probe per 1,000 feet or as identified by South Coast Air Quality Management District (SCAQMD) and/or Local Enforcement Agency (LEA) in the landfill expansion, and one probe per 650 feet or as identified by SCAQMD and/or LEA in the City Inactive landfill along the landfill perimeter, or whichever is more restrictive shall be installed to identify potential areas of subsurface landfill gas (LFG) migration. These probes shall be monitored to ensure that quantities of LFG beyond regulatory standards do not vent offsite through subsurface soils.
- b. *Integrated Landfill Surface Sampling:* The landfill surface shall be monitored to ensure that the average concentration of total organic compounds over the landfill surface does not exceed SCAQMD's standard of 25 ppm.
- c. *Ambient Air Samples:* 24-hour integrated gas samples and required meteorological data shall be taken to assess any impact the landfill is having on the ambient air quality at the landfill perimeter.
- d. *Instantaneous Landfill Surface Monitoring:* Spot checks on the landfill surface shall be made to determine the maximum concentration of total organic compounds measured as methane, measured at any one point on the surface of the landfill does not exceed the SCAQMD's standard of 500 ppm.
- e. *Regular Monitoring and Annual Testing:* LFG concentrations at perimeter probes, gas collection system headers, the landfill surface, and in ambient air downwind of the landfill shall be monitored once per month or less frequently (but no less than quarterly) as required by the SCAQMD. The LFG collection system shall be adjusted and improved based on quarterly monitoring data and annual stack testing results.

Odor/Landfill Gas - 7.06 (County)

If an odor problem should develop, appropriate control measures shall be implemented. These measures include the application of daily cover material or more frequent application of the cover material to seal the landfill surface, or adjustments to the wells, equipment, and operation of the LFG collection and recover system.

Amendment 45.N - 4.a, 4.c, 4.d (County)

Identify and provide status on the measures currently being implemented as required by the AQMD's Order for Abatement.

An odor patrol program, which would include the following at a minimum:

- Provide a trained technician to conduct odor patrols in the surrounding neighborhoods at a frequency of one patrol per hour from 6 a.m. to 10 a.m., Monday through Saturday, and during adverse wind conditions.
- If odor is detected, identify its potential and/or actual source, including those that may not be related to the Landfill's operation, such as an odorous trash dumpster or transfer trucks.
- If odor is determined to be related to the Landfill's operation, take immediate action to reduce the odor. Document the streets patrolled on a map, time of the patrol, potential source of odor, and immediate actions taken by the Landfill.
- A landfill gas mitigation plan in preparation for the next rainy season since landfill gas emissions from either the landfill surface or landfill gas control equipment is cited as a potential contributor in the AQMD's Order for Abatement. The plan should include the following at a minimum:
 - Description of the site's current Gas Monitoring and Control Plan, including a map showing locations of gas monitoring probes, gas extraction wells, horizontal and vertical gas collection lines, etc.
 - Compliance history of the site's landfill gas migration control program from January 1, 2009, to the present quarter as well as any corrective actions.

- *Discuss the impacts of the most recent heavy rains on the landfill gas collection system, including identifying locations of damage due to soil erosion, as well as any corrective actions or mitigation measures.*
- *A work plan that includes preventive measures, such as identifying and filling any surface cracks and installing additional extraction wells, as well as contingency measures.*
- *An implementation schedule for the above work plan.*

Amendment 45.N - 5 (County)

Include in the Quarterly Dust and Odor Reports, which are required by CUP Condition No. 45.N, the status and effectiveness of mitigation measures 1 through 3 above, and the Odor Mitigation Plan.

Current Status/Comments – Compliance with these mitigation measures, concerning landfill gas monitoring and odor control and detection, is being monitored by a multi-agency team led by the SCAQMD. Only obvious gas emission sources, lack of cover, or exposed trash resulting in odor and gas emissions observed during the monitoring visit will be reported.

During the February 5, 2014 site monitoring it was observed on the County top deck that gas recovery Well #691 was leaking landfill gas at the well head connections. Republic staff stated that they were aware of this leak and had repair parts ordered.

M-4.3.1(36) (City)

To ensure that infiltration of surface water into the closed landfill cells is minimized, surface runoff shall be intercepted and diverted around the landfill. The method of diversion used at the project site shall include the use of lined interceptor ditches placed along the edges of the landfill areas. This system of ditches shall flow into monitored sedimentation basins. After sediment content has been reduced, surface waters shall flow into the existing flood control channel directly east of the project site entrance.

Surface Water - 2.03 (County)

As development of the site proceeds, surface drainage control facilities will be maintained so that surface water runoff is diverted from the working faces and isolated from contact with the waste. Onsite drainage control channels will be designed per CCR, Title 23, Division 3, Chapter 15, Article 3, § 2546, which mandates the requirements for a capital storm event (100 year, 24-hour precipitation).

Current Status/Comments – During the major rain storms in late February 2014, significant ponding occurred in the CC-2 and CC-3A area just north of the CC-3A buttress. The southern portion of CC-3A had areas washed out and there was damage to the HDPE drainage channel. The LARQCB observed these site conditions and issued a notice of violation. At the time of monitoring, significant progress was made correcting the site conditions.

M-4.3.1(38) (City)

Permanent bench drainage ditches shall be installed when final cover is placed on completed portions of the landfill. These ditches shall be lined. Temporary unlined drainage facilities consisting of diversion ditches (V-ditches) where necessary shall directly intercept natural surface runoff. Any intermittent channel flow in the existing canyon bottom shall be captured, channeled, and conveyed into a sedimentation basin. Diversion ditches shall convey surface runoff from the undisturbed areas to the permanent perimeter ditches for safe transport around the landfill footprint. Surface covers of various types, from mulches to vegetation, shall be used to retard erosion from areas of disturbance. In addition, areas of disturbance shall be kept at a minimum during active filling operations.

Surface Water - 2.12 (County)

Permanent bench drainage ditches shall be installed when final cover is placed on completed portions of the landfill. These ditches shall be lined. Temporary unlined drainage facilities consisting of diversion ditches (V-ditches) where necessary shall directly intercept natural surface runoff. Any intermittent channel flow in the existing canyon bottom shall be captured, channeled, and conveyed into a sedimentation basin. Diversion ditches shall convey surface runoff from the undisturbed areas to the permanent perimeter ditches for safe transport around the landfill footprint. Surface covers of various types, from mulches to vegetation, shall be used to retard erosion from areas of disturbance. In addition, areas of disturbance shall be kept at a minimum during active filling operations.

Current Status/Comments – Temporary and permanent drainage ditches have been installed to convey water to the basins. The majority of inactive and/or areas that have been disturbed have no temporary or permanent vegetation or other surface cover to retard erosion.

M-4.3.1(45) (City)

An erosion control plan would be implemented by the project proponent to prevent stormwater pollution from construction activity. Construction materials, equipments and vehicles would be stored or parked in areas protected from stormwater runoff. Construction material loading and unloading would be in designated areas to minimize any washout due to stormwater runoff. Pre-construction controls would be implemented to include the use of a sandbagging system, including sandbag check dams and sandbag desilting basins, which would used to limit runoff velocities and minimize sediment in storm water runoff.

Surface Water 2.14 (County)

An erosion control plan would be implemented by the project proponent to prevent stormwater pollution from construction activity. Construction materials, equipments and vehicles would be stored or parked in areas protected from stormwater runoff. Construction material loading and unloading would be in designated areas to minimize any washout due to stormwater runoff. Pre-construction controls would be implemented to include the use of a sandbagging system, including sandbag check dams and sandbag desilting basins, which would used to limit runoff velocities and minimize sediment in storm water runoff.

Current Status/Comments – An erosion control plan should be available on site for review by the agencies and monitor. During the major rain storms in late February 2014, significant erosion was experienced at the landfill. Consequently, the landfill will need to reassess its erosion control plan to prevent the same situation form reoccurring.

M-4.3.1(46) (City)

A preventive maintenance program would be implemented by the project proponent, including inspection of facility equipment, systems, and stormwater management devices to detect conditions that may cause breakdowns or failures resulting in discharge of materials into stormwater. This program applies to the onsite drainage ditches; rip-rap; berms and dikes; dust control; silt fences; diversion grading; and pavement surfaces. Each system and piece of stationary equipment would be inspected monthly. Procedures for inspection would vary, due to the piece of equipment or system. However, the major elements of the inspection program would include checking for cracks or structural failures, inspecting parts or pieces of equipment nonfunctioning, checking for the degradation or deterioration of operating units, and investigating the need for cleaning or emptying units. A summary report of these monitoring results and the corrective actions taken will be disseminated in each newsletter with a more detailed report on the web site and in the annual report.

Surface Water 2.15 (County)*Surface Water Preventive Maintenance Program*

A preventive maintenance program will be implemented by the permittee, including inspection of facility equipment, systems, and stormwater management devices to detect conditions that may cause breakdowns or failures resulting in discharge of materials into stormwater. This program applies to the onsite drainage ditches, rip-rap, berms and dikes, dust control, silt fences, diversion grading, and pavement surfaces. Each system and piece of equipment will be inspected monthly.

Procedures for inspection would vary based on the piece of equipment or system. However, the major elements of the inspection program will include checking for cracks or structural failures, inspecting parts or pieces of equipment nonfunctioning, checking for the degradation or deterioration of operating units, and investigating the need for cleaning or emptying units.

Current Status/Comments – During the January 15, 2014 site monitoring it was observed that along a portion of the westside drainage channel between Basin A and Basin D, the floor of the basin is uplifted in the middle with large cracks and weeds growing. This indicates the presence of moisture interacting with possible swelling soils and/or adjacent hillside movement. At the connection between the V-ditch feeding the channel, there is a gap between shotcrete and soil which is a conduit for water to infiltrate beneath the channel shotcrete into the subbase soil. Cracks mentioned in previous visits on the westside (native soil side) of the channel are getting worse, with concrete spalling and pieces falling off. On the eastside (landfill side) a tree is growing bigger, causing sidewall damage. In a large storm, the conditions noted above could worsen leading to significant damage to the channel.

Segments of the channel leaving Basin D have been relined with HDPE. The beginning of the liner may need to be reinforced to avoid water flowing under the liner as the row of sand bags may not be enough to stop this from occurring.

M-4.3.2(49) (City)

Areas of natural groundwater seepage shall be intercepted by the installation of a subgrade gravel drainage blanket. A series of underdrains shall be placed in areas where seeps and springs have been identified, and they shall collect and convey any water from these sources to the sedimentation basin. In the event any chemical constituents are in the seep water, the seep waters will be sampled, analyzed, collected, and then sent either to the onsite leachate treatment facility or offsite for proper treatment and disposal. The nature and the source of the seep would be investigated including additional sampling and laboratory testing.

Surface Water 2.05 (County)

Placement of a series of underdrains in areas where seeps and springs have been identified will collect and convey any water from these sources.

Current Status/Comments – During the January 15, 2014 site monitoring it was observed that a large diameter corrugated steel drain pipe was unearthed in the City south soil stockpile, and a seep was observed that was feeding this drain pipe. Water was ponding a few feet high at the toe of a vertical slope. This should be addressed as it poses a stability risk. A smaller seep coming from around an abandoned gas pipeline on the slope was also observed to the east of the ponding water. An erosion gully due to the seep was observed.

M-4.4.1(60) (City)

Venturan Coastal Sage Scrub

A detailed conceptual mitigation plan shall be prepared by the project proponent and contain specific information on planting, maintenance, and monitoring. A revegetation plan that includes Coastal sage scrub restoration can feasibly occur onsite. The implementation of this plan will provide onsite mitigation greater than 1:1 to offset the loss of coastal sage scrub.

Biota - 4.27 (County)

Venturan Coastal Sage Scrub: A detailed conceptual mitigation plan shall be prepared by the permittee and shall contain specific information on planting, maintenance, and monitoring. A revegetation plan that includes coastal sage scrub restoration can feasibly occur onsite. The implementation of this plan will provide onsite mitigation greater than 1:1 to offset the loss of coastal sage scrub.

Current Status/Comments – During the January 15, 2014 site monitoring, Republic stated that it will be in a maintenance mode on City Deck C sage mitigation until May 2014. Container plants have been planted, replacing plants that died. PRG, the maintenance company, is onsite weekly performing necessary weeding and maintenance. Architerra, the landscape design firm, will perform monthly and a one-year evaluations. Details on the status of Deck C's success will be included in the quarterly vegetation report. The County sage mitigation area was observed and had no revegetation activity occurring.

During the February 5, 2014 site monitoring it was observed that the City sage mitigation Deck C replanting with sage and other plants was completed. Salt and quail bush was continuing to be the predominant plants. The County sage mitigation area was observed and had no revegetation activity occurring.

During the March 12, 2014 site monitoring, the City Deck C sage mitigation area was observed and the salt and quail bush was growing and accounted for approximately 70-80% of the surviving plants. Sage and other plants had spotty success. The County sage area was much greener and appeared more filled-in with vegetative growth due to the February 2014 rains.

M-4.4.1/67 (City)

Migratory Bird Treaty Act

To prevent the loss of an active migratory bird nest, vegetation shall not be cleared during the breeding season (i.e., March 15 to August 1). If vegetation clearing needs to occur, surveys shall be conducted by biologists to determine active migratory bird nests. All active migratory bird nests shall be protected until the young become independent.

Biota - 4.33 (County)

Migratory Bird Treaty Act

To prevent the loss of an active migratory bird nest, vegetation shall not be cleared during the breeding season (i.e., March 15 to August 1). If vegetation clearing needs to occur, surveys shall be conducted by biologists to determine active migratory bird nests. All active migratory bird nests shall be protected until the young become independent.

Current Status/Comments – During the March 15, 2014 site monitoring, the tree and vegetation removal along the landfill entrance road for the access road realignment was observed. Numerous oak trees were removed along with some coastal sage vegetation. Republic staff stated that biological monitoring was done before the start of tree and vegetation removal. Additional onsite biological monitoring may be needed from March 15, 2014 through August 1, 2014 if determined by Republic's consultant to be required in order to meet this requirement.

M-4.4.2/69 (City)

Potential candidate mitigation sites have been identified by the project proponent in conjunction with resource agencies for consideration to compensate for impacts on riparian and wetland resources as a result of project development. These sites include Bull Creek, Bee Canyon and East Canyon, which are located proximate to the project site. Prior to the development of any detailed mitigation plans and drawings, the final selection will be determined cooperatively by the CDFG, Corps, SWRCB, and other regulatory agencies in conjunction with the City and project proponent.

Current Status/Comments – During the February 5, 2014 site monitoring exit meeting with Republic staff, the monitor was updated on the status of the Chatsworth Wetland and Riparian Mitigation Project. There are still City of Los Angeles property transfer issues with the wetland and riparian mitigation at the Chatsworth Reservoir. The Corps of Engineers had given an extension of time on the implementation of a mitigation program until the end of 2014. A status update should be provided to the City and County's Planning Departments and the City Councilman's office indicating problem areas and proposed actions. The Corps of Engineers and California Fish and Wildlife should be provided a copy.

M-4.4.3(82) (City)

An annual monitoring report shall be prepared and submitted to the City Department of Public Works, Street Tree Division by the project proponent. This report shall detail the growth and survival record for each mitigation tree planted. The report will provide an accounting of the number of trees required for mitigation versus the number of qualifying trees planted. Maintenance recommendations will be included in the annual report.

Biota - 4.13 (County)

All oak trees will be counted when removed to verify that adequate mitigation has been provided in accordance with the Oak Tree Mitigation Plan.

Current Status/Comments – During the March 2014 site monitoring it was observed that numerous trees were removed for the main access road realignment. Republic staff stated and provided documentation indicating that the trees were counted and mitigated for in 2010. The City Department of Public Works Street Trees Division should confirm the mitigation summary tally.

M-4.9.3(109) (City)

On a once-a-week basis, or as needed, the landfill operator shall mobilize cleanup crews to provide litter pickup services within the O'Melveny Park area, along Balboa Boulevard and San Fernando Road, and in other residential areas located in proximity to the landfill, that may be affected by offsite litter migration. On a daily basis, the cleanup crews shall inspect the surrounding area to assess if more frequent cleanups are required. Fences outside of the landfill perimeter may be visible to the surrounding community.

Visual 10.11 (County)

The permittee's onsite Litter Control Program will include continuous patrol of the access road and working face during hours of operations and mobilize clean-up crews on a regular basis for litter pick-up along designated public access routes, O'Melveny Park and the adjacent neighborhood.

Current Status/Comments – During the January 15 and March 12, 2014 site monitoring, windblown litter and dumped debris was noted between the front exterior wall of the terminal basin and the site slump stone wall along San Fernando Road.

During the January 15, February 5, February 19 and March 12, 2014 site monitoring, windblown litter was observed on the back hillsides of Basin A and Basin B.

On February 19, 2014 it was observed that Sierra Highway near the I-14 overpass was clean except for three isolated areas of illegal dumping; a door and two large trash bags full of waste.

On March 12, 2014 it was observed that Sierra Highway at the I-14 overpass was clean with no litter or illegal dumping. There was a box and tarp dumped further north on Sierra Highway.

M-4.9.4(121) (City)

The landfill operator shall implement a fire prevention plan in compliance with CCR, Title 8, § 3221. Components of this written fire prevention plan shall include potential fire hazards and their proper handling and storage procedures; potential ignition sources (i.e., welding or smoking), their control procedures, and the type of fire protection equipment or systems that can control a fire involving them; names or regular job titles of those responsible for maintenance of equipment and systems installed to prevent or control ignitions or fires; and names or regular job titles of those responsible for the control of accumulation of flammable or combustible waste materials.

Fire Service - 12.03 (County)

The permittee shall maintain onsite fire response capabilities, construct access road, provide water tanks, water mains, fire hydrants and fire flows and perform brush clearance to the satisfaction of the County Forester and Fire Warden. The landfill will comply with all applicable County codes and ordinances which delineated the requirements for fire access, water mains, fire flows and fire hydrants, specifically defined by the County Fire Department. New construction water tanks, water mains and fire hydrants will be completed to meet the fire flow requirements of the Fire Department.

Current Status/Comments – It was observed on January 15, 2014 that the leachate facility electrical lines are hanging on branches and pose a fire hazard.

On February 19, 2014 Republic staff stated that they were aware of the tree branches hanging over the electric wires, and stated that a tree trimmer was scheduled for February 24, 2014.

On March 12, 2014 it was observed that the trees at the leachate treatment facility had been trimmed to clear the power lines. There was one stray limb that needed to be trimmed.

M-4.9.4(125) (City)

The landfill operator shall maintain perimeter fencing in and around the site in accordance with CCR, Title 14, § 17658 to discourage illegal entry to the landfill. Where existing topography conditions create an effective barrier, no perimeter fencing shall be installed. Entrance and access gates shall remain locked when the landfill facility is not in operation. All existing perimeter fencing shall be inspected on a routine basis by the landfill operator, and necessary repairs shall be made to ensure a continued deterrent for unauthorized entry to the project site. Additionally, the landfill operator shall maintain posted "no trespassing" signage at the exterior perimeter fencing nearest the project site entrance.

Current Status/Comments – On January 15, 2014 the terminal basin gate was damaged and lying on the ground. Republic staff was scheduling its repair.

On February 19, 2014 the southern oil field perimeter gate was unlocked. Republic staff stated that a DWP employee uses this access and cuts any locks put on the gate.

On March 12, 2014 the southern oil field perimeter gate was observed to be unlocked and standing open.

M-4.19.1(183) (City)

Prior to the commencement of initial earth excavation, specific sections of the project area shall be resurveyed as a precautionary measure to minimize potential loss of undiscovered archaeological resources. Specific areas within the project site to be resurveyed shall be determined by the intended cut-and-fill areas proposed for landfill development. As new areas for excavation are identified, an evaluation of those areas shall be made based on the prior survey results and consultation with appropriate technical specialists. Factors to be considered for delineation of areas to be resurveyed will be known site selection factors associated with aboriginal groups suspected of having inhabited the general area. These factors include proximity to water, the type of vegetation (e.g., food source, shelter, and fuel), and the topography (e.g., slope and aspect).

Ecological Significance 62 (County)

The Permittee shall develop and implement a program to identify and conserve all significant archaeological and paleontological materials found onsite pursuant to Part VII of the IMP. If the Permittee finds any evidence of aboriginal habitation or fossils during earthmoving activities, Landfill operations shall immediately cease in that immediate area, and the evidence and area shall be preserved until a qualified archaeologist or paleontologist, as appropriate, makes a determination as to the significance of the evidence. If the determination indicates that the archaeological or paleontological resources are significant, the resources shall be recovered to the extent practicable prior to resuming Landfill operations in that immediate area of the Landfill.

Current Status/Comments – During the March 12, 2014 site monitoring it was observed that preparations were being made for grading of the realignment of the access road. The County needs to approve the proposed drainage system for the realignment of the access road before initiating the grading. An archaeological survey needs to be performed on the main access road realignment area before grading proceeds.

M-4.19.2(187) (City)

Prior to the commencement of initial earth excavation, specific sections of the City/County Landfill Project area shall be resurveyed as a precautionary measure to minimize potential loss of undiscovered paleontological resources. Specific sections of the project area to be resurveyed shall be as determined by the intended cut-and-fill areas proposed for landfill development. As new areas for excavation are identified by the project proponent, an evaluation of those areas shall be made based on the prior survey results and consultation with appropriate technical specialists.

Ecological Significance 62 (County)

The Permittee shall develop and implement a program to identify and conserve all significant archaeological and paleontological materials found onsite pursuant to Part VII of the IMP. If the Permittee finds any evidence of aboriginal habitation or fossils during earthmoving activities, Landfill operations shall immediately cease in that immediate area, and the evidence and area shall be preserved until a qualified archaeologist or paleontologist, as appropriate, makes a determination as to the significance of the evidence. If the determination indicates that the archaeological or paleontological resources are significant, the resources shall be recovered to the extent practicable prior to resuming Landfill operations in that immediate area of the Landfill.

Current Status/Comments – During the March 12, 2014 site monitoring, it was observed that preparations were being made for grading of the realignment of the access road. The County needs

to approve the proposed drainage system for the realignment of the access road before initiating the grading. A paleontological survey and field monitoring need to be performed on the main access road realignment area before the start of grading and during grading operations.

Summary of Requested Documents

The following documents, reports and plans are recommended to be made available at the site for agency and monitor review in order to assist in streamlining the monitoring process.

- a) Design report for the Leachate Collection and Treatment Facility (LCTF).
- b) Current Fill Sequence Plan.
- c) A plan showing areas inactive for 180 days or longer with records tracking fill areas and interim reclamation and revegetation, including the timing of proposed work, as well as a plan showing current and projected areas to be within ten feet of the limits of fill.
- d) Maps showing areas that are at final elevation and bench ditches that will connect to drainage ditches to protect against natural surface runoff.
- e) The current erosion control plans should be available for agency and monitor review.
- f) Site drainage plans, including surface and underdrains systems with complementing revegetation plan.
- g) A plan/ report of the liner interceptor ditches design/ installation to ensure that surface runoff is appropriately conveyed to the existing flood control channel directly east of the project site entrance.
- h) Comprehensive geotechnical reports.
- i) A preventative maintenance plan and summary of monitoring reports of inspections of facility equipment, systems and stormwater management devices to detect conditions that may cause breakdowns or failures resulting in discharge of materials into stormwater.

Conclusions

In this reporting period, UltraSystems has monitored the conditions and/or mitigation measures for the City/ County, as shown on the Mitigation Monitoring Summary Excel spreadsheets.

As shown by the Non-Compliant and Further Review Needed sections above, the landfill is actively working toward being fully compliant with conditions and/or mitigation measures, with no non-compliant conditions observed. Furthermore, monitoring of the tasks on these Excel spreadsheets tracks progress toward being fully compliant. Notwithstanding the above, air quality issues are not being actively monitored by UltraSystems, and may not be compliant.

The 2014 First Quarter Mitigation Monitoring Summary Excel spreadsheets track the progress and completion of tasks as they were accomplished during this quarterly period.

Sunshine Canyon Landfill First Quarter 2014 Mitigation Monitoring Summary / City – See Excel Spreadsheet

Sunshine Canyon Landfill Mitigation Monitoring Summary - (City 01-01-2014 through 03-31-2014)

Reference #	Mitigation #	City Mitigation Measures and Conditions Monitored by Discipline	Monitoring Frequency	1/15/2014	Status*	Further Review Needed/Comments**	Resolved*	2/5/2014	Status*	Further Review Needed/Comments**	Resolved*	2/19/2014	Status*	Further Review Needed/Comments**	Resolved*	3/12/2014	Status*	Further Review Needed/Comments**	Resolved*
Project Manager																			
Q - A.3.		Definitions	info	/				/				/				/			
Q - A.6.		Submit Annual Reports	June yearly	/				/				/				/			
Q - A.10.		Provision of Fees	yearly	/				/				/				/			
Q - B.1.		Permitted/Prohibited Landfill Uses	yearly	/				/				/				/			
Q - B.2		Approval of Landfill	ongoing	✓	C	I-a		✓	C	NONE		✓	C	NONE		✓	C	I-d	
Q - B.2.c.		Ancillary Uses and Facilities	ongoing	✓	C	NONE		✓	C	NONE		✓	C	NONE		✓	C	NONE	
		Ancillary Uses and Facilities																	
Q - B.2.d (3)		10 Year Phase Review	2015	/				/				/				/			
		10 Year Phase Review																	
Q - B.4.d.		Inert/Exempt Materials	info	/				/				/				/			
Q - B.5.a.		Prohibited Waste	info	/				/				/				/			
Q - B.6.		Waste Diversion	ongoing	✓	C	NONE		✓	C	NONE		✓	C	NONE		✓	C	NONE	
Q - C.3.g.		Paved Access Roads	ongoing	✓	C	NONE		✓	C	NONE		✓	C	NONE		✓	C	NONE	
Q - C.3.h.		Surfacing of Access Roads	ongoing	✓	C	NONE		✓	C	NONE		✓	C	NONE		✓	C	NONE	

* C = Compliant, NC = Non-Compliant, FRN = Further Review Needed, R = Resolved

** See Appendix I for Comments

Checkmark = Condition or mitigation was monitored

/ = Yearly or non-ongoing monitoring frequency

Sunshine Canyon Landfill Mitigation Monitoring Summary - (City 01-01-2014 through 03-31-2014)

Reference #	Mitigation #	City Mitigation Measures and Conditions Monitored by Discipline	Monitoring Frequency	1/15/2014	Status*	Further Review Needed/Comments**	Resolved*	2/5/2014	Status*	Further Review Needed/Comments**	Resolved*	2/19/2014	Status*	Further Review Needed/Comments**	Resolved*	3/12/2014	Status*	Further Review Needed/Comments**	Resolved*
Q - C.5.		Graffiti Removal and Deterrence	ongoing	✓	C	NONE		✓	C	NONE		✓	C	NONE		✓	C	NONE	
Q - C.10.c.		Evaluation of Beneficial Gas Usage	June yearly	✓	C	I-a						✓	C	I-c					
Q - C.10.d. (1)		Alternative Fuel Vehicles	status																
Q - C.10.d. (2)		Alternative Fuel Refuse Collection Trucks	status																
Q - C.12.a.		Technical Advisory Committee	info	/				/				/				/			
Q - C.12.c.		Contract for Mitigation Monitoring	info	/				/				/				/			
Q - C.12.c.		Contract for Mitigation Monitoring-5 years	info	/				/				/				/			
T - 4		Fire Plan	status									✓	FRN	I-c					
T - 5.j.		Trip Diversion	status	✓	C	NONE		✓	C	NONE		✓	C	NONE		✓	C	NONE	
T - 6		Satisfactory Street Lighting	status	/				/				/				/			
M - 4.1.1	7	Reabandonment Procedures	status	✓	C	NONE		✓	C	NONE		✓	C	NONE		✓	C	NONE	
M - 4.1.4	11	Post-5.0 Earthquake Analysis	upon event	/	NA	NONE		/	NA	NONE		/	NA	NONE		/	NA	NONE	
M - 4.2.12	27	Heavy Equipment Operations	ongoing	✓	C	NONE		✓	C	NONE		✓	C	NONE		✓	C	NONE	
M - 4.2.12		Heavy Equipment Operations	ongoing	✓	C	NONE		✓	C	NONE		✓	C	NONE		✓	C	NONE	

* C = Compliant, NC = Non-Compliant, FRN = Further Review Needed, R = Resolved

** See Appendix I for Comments

Checkmark = Condition or mitigation was monitored

/ = Yearly or non-ongoing monitoring frequency

Sunshine Canyon Landfill Mitigation Monitoring Summary - (City 01-01-2014 through 03-31-2014)

Reference #	Mitigation #	City Mitigation Measures and Conditions Monitored by Discipline	Monitoring Frequency	1/15/2014	Status*	Further Review Needed/Comments**	Resolved*	2/5/2014	Status*	Further Review Needed/Comments**	Resolved*	2/19/2014	Status*	Further Review Needed/Comments**	Resolved*	3/12/2014	Status*	Further Review Needed/Comments**	Resolved*
M - 4.2.12	28	Site Erosion-Cover	ongoing	✓	C	NONE		✓	FRN	I-b		✓	C	NONE		✓	C	NONE	
M - 4.2.12		Site Erosion-Cell Height	ongoing	✓	C	NONE		✓	C	NONE		✓	C	NONE		✓	C	NONE	
M - 4.2.12		Site Erosion-Sealant	ongoing	✓	FRN	I-a		✓	C	NONE		✓	FRN	I-c		✓	C	NONE	
M - 4.2.13	29	LFG Control Measures	ongoing	/		I-a		/		I-b		/		I-c		/		I-d	
M - 4.2.13	30	Operational Odor Control Techniques	ongoing	✓	C	NONE		✓	C	NONE		✓	C	NONE		✓	C	NONE	
M - 4.2.13	31	Solid Waste Compaction	ongoing	✓	C	NONE		✓	C	NONE		✓	C	NONE		✓	C	NONE	
M - 4.2.13	32	LFG Collection and Recovery System	ongoing	/		I-a		/		I-b		/		I-c		/		I-d	
M - 4.2.13	33	Odor Control Measures	ongoing	/		I-a		✓	FRN	I-b		/		I-c		/		I-d	
M - 4.2.13	34	Odor/LFG Monitoring	ongoing	/		I-a		/		I-b		/		I-c		/		I-d	
		Periodic LFG Monitoring		/		I-a		/		I-b		/		I-c		/		I-d	
M - 4.3.2	52	LFG Migration Mitigation	ongoing	/	NA	NONE		/	NA	NONE		/	NA	NONE		/	NA	NONE	
M - 4.3.2	57	Dust Control Water	ongoing	✓	C	NONE		✓	C	NONE		✓	C	NONE		✓	C	NONE	
M - 4.4.2	69	Offsite Mitigation Sites	status					✓	C	I-b									
M - 4.4.2	70	Purchasing Wetland Credit	status	/				/				/				/			
M - 4.4.2	71	Funding-Invasive Species Eradication Program	status	/				/				/				/			
M - 4.6	85	Site Lighting	status	✓	C	NONE		✓	C	NONE		✓	C	NONE		✓	C	NONE	

* C = Compliant, NC = Non-Compliant, FRN = Further Review Needed, R = Resolved

** See Appendix I for Comments

Checkmark = Condition or mitigation was monitored

/ = Yearly or non-ongoing monitoring frequency

Sunshine Canyon Landfill Mitigation Monitoring Summary - (City 01-01-2014 through 03-31-2014)

Reference #	Mitigation #	City Mitigation Measures and Conditions Monitored by Discipline	Monitoring Frequency	1/15/2014	Status*	Further Review Needed/Comments**	Resolved*	2/5/2014	Status*	Further Review Needed/Comments**	Resolved*	2/19/2014	Status*	Further Review Needed/Comments**	Resolved*	3/12/2014	Status*	Further Review Needed/Comments**	Resolved*
M - 4.7.1	86	Open Space Buffer Area	ongoing	✓	C	NONE		✓	C	NONE		✓	C	NONE		✓	C	NONE	
M - 4.9.3	106	Litter Minimization	ongoing	✓	C	NONE		✓	C	NONE		✓	C	NONE		✓	C	NONE	
M - 4.9.3	107	Litter/Debris Containment	ongoing	✓	C	NONE		✓	C	NONE		✓	C	NONE		✓	C	NONE	
M - 4.9.3	108	Vehicle Tarping Requirements	ongoing	✓	C	NONE		✓	C	NONE		✓	C	NONE		✓	C	NONE	
M - 4.9.3	109	Periodic Offsite Litter Pickup	ongoing	✓	FRN	I-a		✓	FRN	I-b		✓	FRN	I-c		✓	FRN	I-d	
M - 4.9.3	110	Illegal Dumping Activities	ongoing	✓	C	NONE		✓	C	NONE		✓	C	NONE		✓	C	NONE	
M - 4.9.3	111	Radio Dispatch Litter Control	ongoing	✓	C	NONE		✓	C	NONE		✓	C	NONE		✓	C	NONE	
M - 4.9.3	112	Litter Control	ongoing	✓	C	NONE		✓	C	NONE		✓	C	NONE		✓	C	NONE	
M - 4.9.5	127	Address Concerns of Citizens' Advisory Committee	ongoing	/				/				/				/			
M - 4.9.6	128	Landfill Gas/Collection System Unsafe Methane Levels	ongoing	✓	C	NONE		✓	C	NONE		✓	C	NONE		✓	C	NONE	
M - 4.9.6	129	Landfill Gas/Collection System Detection/Training	ongoing	✓	C	NONE		✓	C	NONE		✓	C	NONE		✓	C	NONE	
M - 4.9.6	130	Landfill Gas/Collection System Risk Mitigation	ongoing	✓	C	NONE		✓	C	NONE		✓	C	NONE		✓	C	NONE	
M - 4.16.4	176	Reclaimed Water	status	/				/				/				/			
M - 4.16.4	177	Water Conservation	ongoing	✓	C	NONE		✓	C	NONE		✓	C	NONE		✓	C	NONE	
Civil & Geotechnical Engineer																			

* C = Compliant, NC = Non-Compliant, FRN = Further Review Needed, R = Resolved

** See Appendix I for Comments

Checkmark = Condition or mitigation was monitored

/ = Yearly or non-ongoing monitoring frequency

Sunshine Canyon Landfill Mitigation Monitoring Summary - (City 01-01-2014 through 03-31-2014)

Reference #	Mitigation #	City Mitigation Measures and Conditions Monitored by Discipline	Monitoring Frequency	1/15/2014	Status*	Further Review Needed/Comments**	Resolved*	2/5/2014	Status*	Further Review Needed/Comments**	Resolved*	2/19/2014	Status*	Further Review Needed/Comments**	Resolved*	3/12/2014	Status*	Further Review Needed/Comments**	Resolved*
M - 4.1.1	2	Grading Outside of Conceptual Grading Plan Area	ongoing													✓	FRN	I-d	
M - 4.1.1	3	Unsuitable Material Removal/Buffer Zones	ongoing																
M - 4.1.1	4	Grading Outside of Landfill Footprint	ongoing													✓	FRN	I-d	
M - 4.1.1	5	Grading Activity Compliance	ongoing													✓	FRN	I-d	
M - 4.1.2	8	Landslide Guidelines	ongoing																
M - 4.1.2	9	Soil Stabilization	ongoing																
M - 4.1.4	10	Landfill Design	ongoing																
M - 4.1.4	11	Earthquake Operations Checklist	upon event	/	NA	NONE		/	NA	NONE		/	NA	NONE		/	NA	NONE	
M - 4.1.5	12	Geologic Hazards - Liquefaction	ongoing																
M - 4.1.5	13	Design/Construction- Liquefaction	ongoing																
M - 4.1.5	14	Design/Construction- Containment Structures	ongoing																
M - 4.1.6	15	Refuse Slope Gradients	ongoing	✓	C	NONE		✓	C	NONE		✓	C	NONE		✓	C	NONE	
M - 4.1.6	16	Cut and Fill Slope Gradients	ongoing	✓	C	NONE		✓	C	NONE		✓	C	NONE		✓	C	NONE	
M - 4.1.6	17	Final Slope Factors of Safety	ongoing																
M - 4.1.6	18	Survey Monuments	ongoing	✓	C	NONE		✓	C	NONE		✓	C	NONE		✓	C	NONE	
M - 4.3.2	47	Landfill Liner	ongoing																

* C = Compliant, NC = Non-Compliant, FRN = Further Review Needed, R = Resolved

** See Appendix I for Comments

Checkmark = Condition or mitigation was monitored

/ = Yearly or non-ongoing monitoring frequency

Sunshine Canyon Landfill Mitigation Monitoring Summary - (City 01-01-2014 through 03-31-2014)

Reference #	Mitigation #	City Mitigation Measures and Conditions Monitored by Discipline	Monitoring Frequency	1/15/2014	Status*	Further Review Needed/Comments**	Resolved*	2/5/2014	Status*	Further Review Needed/Comments**	Resolved*	2/19/2014	Status*	Further Review Needed/Comments**	Resolved*	3/12/2014	Status*	Further Review Needed/Comments**	Resolved*
M - 4.3.2	48	Landfill Liner	ongoing																
M - 4.3.2	54	Preliminary Closure/Postclosure Plan	status																
M - 4.3.2	55	Landfill Design/Operation/Final	status																
M - 4.3.2	56	Cover Application	ongoing																
M - 4.14.1	155	Access Roadway Grade	ongoing																
M - 4.18	178	Landfill Elevation Exceedance	ongoing																
Hydrologist																			
M - 4.1.4	11	Earthquake Operations Checklist	upon event	/	NA	NONE		/	NA	NONE		/	NA	NONE		/	NA	NONE	
M - 4.3.1	36	Surface Water Infiltration Minimization	ongoing													✓	FRN	I-d	
M - 4.3.1	37	Surface Drainage Systems	ongoing																
M - 4.3.1	38	Permanent/Temporary Ditches	ongoing	✓	FRN	I-a													
M - 4.3.1	39	Drainage Protection	ongoing																
M - 4.3.1	40	SWRCB Permit Coverage	ongoing																
M - 4.3.1	41	Surface Water Collection System	ongoing																
M - 4.3.1	42	Surface Water Quality Monitoring	ongoing																

* C = Compliant, NC = Non-Compliant, FRN = Further Review Needed, R = Resolved

** See Appendix I for Comments

Checkmark = Condition or mitigation was monitored

/ = Yearly or non-ongoing monitoring frequency

Sunshine Canyon Landfill Mitigation Monitoring Summary - (City 01-01-2014 through 03-31-2014)

Reference #	Mitigation #	City Mitigation Measures and Conditions Monitored by Discipline	Monitoring Frequency	1/15/2014	Status*	Further Review Needed/Comments**	Resolved*	2/5/2014	Status*	Further Review Needed/Comments**	Resolved*	2/19/2014	Status*	Further Review Needed/Comments**	Resolved*	3/12/2014	Status*	Further Review Needed/Comments**	Resolved*
M - 4.3.1	43	Sediment Basin Maintenance	ongoing																
M - 4.3.1	44	Final Landfill Cover	ongoing																
M - 4.3.1	45	Erosion Control Plan	ongoing	✓	C	I-a													
M - 4.3.1	46	Preventive Maintenance Program	ongoing	✓	FRN	I-a													
M - 4.3.2	49	Interception of Groundwater Seepage	ongoing	✓	FRN	I-a													
M - 4.3.2	50	LCRS/Leachate Monitoring	ongoing																
M - 4.3.2	51	LCRS Monitoring	ongoing																
Biologist																			
M - 4.1.1	6	Slope Erosion Control	ongoing	✓	FRN	I-a		✓	FRN	I-b		✓	FRN	I-c		✓	FRN	I-d	
M - 4.2.11	23	Revegetation/Excavation	ongoing	✓	FRN	I-a		✓	FRN	I-b		✓	FRN	I-c		✓	FRN	I-d	
M - 4.2.12		Temporary Vegetation Cover	ongoing	✓	FRN	I-a		✓	FRN	I-b		✓	FRN	I-c		✓	FRN	I-d	
M - 4.4.1	60	Coastal Sage Scrub Mitigation Plan	ongoing	✓	C	I-a		✓	C	I-b						✓	C	I-d	
M - 4.4.1	61	Coastal Sage Scrub Seeding	ongoing																
M - 4.4.1	62	Mariposa Lily Mitigation Plan	ongoing	/				/				/							
M - 4.4.1	63	San Diego Horned Lizard Mitigation	ongoing	/				/				/							

* C = Compliant, NC = Non-Compliant, FRN = Further Review Needed, R = Resolved

** See Appendix I for Comments

Checkmark = Condition or mitigation was monitored

/ = Yearly or non-ongoing monitoring frequency

Sunshine Canyon Landfill Mitigation Monitoring Summary - (City 01-01-2014 through 03-31-2014)

Reference #	Mitigation #	City Mitigation Measures and Conditions Monitored by Discipline	Monitoring Frequency	1/15/2014	Status*	Further Review Needed/Comments**	Resolved*	2/5/2014	Status*	Further Review Needed/Comments**	Resolved*	2/19/2014	Status*	Further Review Needed/Comments**	Resolved*	3/12/2014	Status*	Further Review Needed/Comments**	Resolved*
M - 4.4.1	64	California Gnatcatcher Surveys	ongoing	/				/				/							
M - 4.4.1	65	Least Bell's Vireo Surveys	ongoing	/				/				/							
M - 4.4.1	66	Western Burrowing Owl Surveys	ongoing	/				/				/							
M - 4.4.1	67	Migratory Bird Treaty Act	ongoing	/				/				/				✓	C	I-d	
M - 4.4.1	68	Raptor Nests Habitat	ongoing	/				/				/							
M - 4.4.3	72	Native Tree Mitigation	ongoing																
M - 4.4.3	73	Nonnative Tree Mitigation	status																
M - 4.4.3	74	Mitigation Tree Planting	ongoing																
M - 4.4.3	75	Tree Planting Mitigation Site Prep	ongoing																
M - 4.4.3	76	Poultry Wire Screen	ongoing																
M - 4.4.3	77	Backfill Material	ongoing																
M - 4.4.3	78	Tree Planting Procedure	ongoing																
M - 4.4.3	79	Tree Area Mulching	ongoing																
M - 4.4.3	80	Tree Irrigation/Fertilization	ongoing																
M - 4.4.3	81	Irrigation System	ongoing																
M - 4.4.3	82	Annual Tree Monitoring Report	annual																
M - 4.9.2	96	Vector Activity Monitoring	ongoing																

* C = Compliant, NC = Non-Compliant, FRN = Further Review Needed, R = Resolved

** See Appendix I for Comments

Checkmark = Condition or mitigation was monitored

/ = Yearly or non-ongoing monitoring frequency

Sunshine Canyon Landfill Mitigation Monitoring Summary - (City 01-01-2014 through 03-31-2014)

Reference #	Mitigation #	City Mitigation Measures and Conditions Monitored by Discipline	Monitoring Frequency	1/15/2014	Status*	Further Review Needed/Comments**	Resolved*	2/5/2014	Status*	Further Review Needed/Comments**	Resolved*	2/19/2014	Status*	Further Review Needed/Comments**	Resolved*	3/12/2014	Status*	Further Review Needed/Comments**	Resolved*
M - 4.9.2	97	Vector Elimination	ongoing																
M - 4.9.2	98	Fly Control	ongoing																
M - 4.9.2	99	Rodent Control	ongoing																
M - 4.9.2	100	Operational Vector-Limiting Activity	ongoing																
M - 4.9.2	101	Equipment Cleanliness/Maintenance	ongoing																
M - 4.9.2	102	Storage of Vector-Attracting Items	ongoing																
M - 4.9.2	103	Salvaged Material Storage- Vector Control	ongoing	✓	C	NONE													
M - 4.9.2	104	Periodic Vector Inspections	ongoing																
M - 4.9.2	105	Implementation of Vector Control Measures	ongoing																
Air Quality & Noise Specialist																			
M - 4.2.11	19	Emissions Mitigation Measures	ongoing	✓	C	NONE		✓	C	NONE		✓	C	NONE		✓	C	NONE	
M - 4.2.11	19	Construction Curtailing due to Pollution	ongoing	/	NA	NONE		/	NA	NONE		/	NA	NONE		/	NA	NONE	
M - 4.2.11	20	Dust Lofting Minimization	ongoing	✓	FRN	I-a						✓	FRN	I-c					
M - 4.2.11	21	Wind Speed Monitoring	ongoing	✓	C	NONE		✓	C	NONE		✓	C	NONE		✓	C	NONE	
M - 4.2.11	22	Grading-Dust Reduction	ongoing	✓	C	NONE		✓	C	NONE		✓	C	NONE		✓	C	NONE	

* C = Compliant, NC = Non-Compliant, FRN = Further Review Needed, R = Resolved

** See Appendix I for Comments

Checkmark = Condition or mitigation was monitored

/ = Yearly or non-ongoing monitoring frequency

Sunshine Canyon Landfill Mitigation Monitoring Summary - (City 01-01-2014 through 03-31-2014)

Reference #	Mitigation #	City Mitigation Measures and Conditions Monitored by Discipline	Monitoring Frequency	1/15/2014	Status*	Further Review Needed/Comments**	Resolved*	2/5/2014	Status*	Further Review Needed/Comments**	Resolved*	2/19/2014	Status*	Further Review Needed/Comments**	Resolved*	3/12/2014	Status*	Further Review Needed/Comments**	Resolved*
M - 4.2.12	24	Construction Equipment Maintenance	ongoing	✓	C	NONE		✓	C	NONE		✓	C	NONE		✓	C	NONE	
M - 4.2.12		Construction Curtailing due to Pollution	ongoing	/	NA	NONE		/	NA	NONE		/	NA	NONE		/	NA	NONE	
M - 4.2.12	25	Refuse Trucks-Maintenance	ongoing																
M - 4.2.12		Refuse Trucks-Engine	ongoing																
M - 4.2.12		Refuse Trucks-Fee Schedule	ongoing																
M - 4.2.12		Refuse Trucks-Fee Schedule Delivery Time	ongoing																
M - 4.2.12		Refuse Trucks-Idling	ongoing																
M - 4.2.12		Refuse Trucks-Emissions	ongoing																
M - 4.2.12	26	Truck Travel and Fugitive Dust Emissions	ongoing																
M - 4.2.12		Truck Travel and Fugitive Dust Emissions	ongoing																
M - 4.2.12		Truck Travel and Fugitive Dust Emissions	ongoing																
M - 4.2.12		Truck Travel and Fugitive Dust Emissions	ongoing																
M - 4.5.2	83	Landfill Hours	info	/				/				/				/			
M - 4.5.2	84	Landfill Equipment-Noise Reduction	ongoing	✓	C	NONE		✓	C	NONE		✓	C	NONE		✓	C	NONE	
Hydrology, Hazardous Waste / Risk of Upset																			

* C = Compliant, NC = Non-Compliant, FRN = Further Review Needed, R = Resolved

** See Appendix I for Comments

Checkmark = Condition or mitigation was monitored

/ = Yearly or non-ongoing monitoring frequency

Sunshine Canyon Landfill Mitigation Monitoring Summary - (City 01-01-2014 through 03-31-2014)

Reference #	Mitigation #	City Mitigation Measures and Conditions Monitored by Discipline	Monitoring Frequency	1/15/2014	Status*	Further Review Needed/Comments**	Resolved*	2/5/2014	Status*	Further Review Needed/Comments**	Resolved*	2/19/2014	Status*	Further Review Needed/Comments**	Resolved*	3/12/2014	Status*	Further Review Needed/Comments**	Resolved*
M - 4.3.2	53	Groundwater Monitoring Wells	ongoing																
M - 4.3.2	58	Operation as Class III Landfill	ongoing	✓	C	NONE		✓	C	NONE		✓	C	NONE		✓	C	NONE	
M - 4.3.2	59	Underground Fuel Storage	ongoing	/	NA	NONE		/	NA	NONE		/	NA	NONE		/	NA	NONE	
M - 4.9.1	90	Refuse Inspection Program	ongoing																
M - 4.9.1	91	Hazardous Waste Load- Checking	status																
M - 4.9.1	93	Hazardous Waste Detection Training	status									✓	C	NONE					
M - 4.9.1	94	Spill Response Program	status									✓	C	NONE					
M - 4.9.4	115	Safety Inspections/Checklists	ongoing									✓	C	NONE					
M - 4.9.4	118	Accident/Injury reports, Inspections	status									✓	C	NONE					
M - 4.9.4	121	Fire Prevention Plan	ongoing	✓	FRN	I-a						✓	FRN	I-c		✓	C	I-d	
M - 4.9.4	123	Personal Protective Equipment	ongoing									✓	C	NONE					
M - 4.9.4	125	Site Access/Fencing	ongoing	✓	FRN	I-a						✓	FRN	I-c		✓	FRN	I-d	
M - 4.14.1	147	Fire Response Capabilities	ongoing									✓	C	NONE					
M - 4.14.1	148	Hydrant Installation	ongoing																
Archaeologist																			

* C = Compliant, NC = Non-Compliant, FRN = Further Review Needed, R = Resolved

** See Appendix I for Comments

Checkmark = Condition or mitigation was monitored

/ = Yearly or non-ongoing monitoring frequency

Sunshine Canyon Landfill Mitigation Monitoring Summary - (City 01-01-2014 through 03-31-2014)

Reference #	Mitigation #	City Mitigation Measures and Conditions Monitored by Discipline	Monitoring Frequency	1/15/2014	Status*	Further Review Needed/Comments**	Resolved*	2/5/2014	Status*	Further Review Needed/Comments**	Resolved*	2/19/2014	Status*	Further Review Needed/Comments**	Resolved*	3/12/2014	Status*	Further Review Needed/Comments**	Resolved*
M - 4.19.1	183	Archaeological Resurvey	ongoing	/	NA	NONE		/	NA	NONE		/	NA	NONE		✓	FRN	I-d	
M - 4.19.1	184	Onsite Archaeologist	ongoing	/	NA	NONE		/	NA	NONE		/	NA	NONE					
M - 4.19.1	185	Archaeological Resources	ongoing	/	NA	NONE		/	NA	NONE		/	NA	NONE					
M - 4.19.1	186	Archaeological Resources	ongoing	/	NA	NONE		/	NA	NONE		/	NA	NONE					
Paleontologist																			
M - 4.19.2	187	Paleontological Resources Resurvey	ongoing	/	NA	NONE		/	NA	NONE		/	NA	NONE		✓	FRN	I-d	
M - 4.19.2	188	Paleontological Resources Excavation	ongoing	/	NA	NONE		/	NA	NONE		/	NA	NONE					
M - 4.19.2	189	Paleontological Resources Training	ongoing	/	NA	NONE		/	NA	NONE		/	NA	NONE					
M - 4.19.2	190	Paleontological Resources Recovery	ongoing	/	NA	NONE		/	NA	NONE		/	NA	NONE					
M - 4.19.2	191	Paleontological Resources Inspection	ongoing	/	NA	NONE		/	NA	NONE		/	NA	NONE					

* C = Compliant, NC = Non-Compliant, FRN = Further Review Needed, R = Resolved

** See Appendix I for Comments

Checkmark = Condition or mitigation was monitored

/ = Yearly or non-ongoing monitoring frequency

Sunshine Canyon Landfill First Quarter 2014 Mitigation Monitoring Summary / County – See Excel Spreadsheet

Sunshine Canyon Landfill Mitigation Monitoring Summary - County (01-01-2014 through 03-31-2014)

Line #	Reference #	Mitigation #	County Mitigation Measures and Conditions Monitored by Discipline	Monitoring Frequency	1/15/2014	Status*	Further Review Needed/Comments**	Resolved*	2/5/2014	Status*	Further Review Needed/Comments**	Resolved*	2/19/2014	Status*	Further Review Needed/Comments**	Resolved*	3/12/2014	Status*	Further Review Needed/Comments**	Resolved*
1	Project Manager																			
2																				
3																				
4	Amendment 45.N 1	45N	Daily Cover Materials	ongoing	✓	C	NONE		✓	C	NONE		✓	C	NONE		✓	C	NONE	
5	Amendment 45.N 3	45N	Daily Cover Procedure	ongoing	✓	C	NONE		✓	C	NONE		✓	C	NONE		✓	C	NONE	
6	Amendment 45.N 4.a	45N	Order for Abatement Status	ongoing	/		I-a		/		I-b		/		I-c		/		I-d	
7	Amendment 45.N 4.c	45N	Odor Patrol Program	ongoing	/		I-a		✓	FRN	I-b		/		I-c		/		I-d	
8	Amendment 45.N 4.d	45N	Landfill Gas Mitigation Plan	ongoing	/		I-a		/		I-b		/		I-c		/		I-d	
9	Amendment 45.N 5	45N	Dust and Odor Reports	ongoing	/		I-a		/		I-b		/		I-c		/		I-d	
10																				
11	Combined Site & Bridge Area -20.A	20. A	Joint Powers Authority	info	/				/				/				/			
12	Combined Site & Bridge Area -20.F	20. F	Mitigation Reporting and Monitoring Program	status	/				/				/				/			
13	Landfill Capacity - 27	27	Tipping Fees for Partial Loads/Peak Hours	status																
14	Grading & Drainage-41.A -D	41A D	Water Conservation	status	✓	C	NONE		✓	C	NONE		✓	C	NONE		✓	C	NONE	
15	Revegetation - 44.F	44. F	Revegetation	status	✓	FRN	I-a		✓	FRN	I-b		✓	FRN	I-c		✓	FRN	I-d	
16	Fugitive Dust - 45.B	45. B	Working Face Areas	ongoing	✓	C	NONE		✓	C	NONE		✓	C	NONE		✓	C	NONE	
17	Fugitive Dust - 45.F	45. F	Inactive Areas Monitoring	ongoing	✓	FRN	I-a		✓	FRN	I-b		✓	FRN	I-c		✓	C	NONE	

* C = Compliant, NC = Non-Compliant, FRN = Further Review Needed, R = Resolved

** See Appendix I for Comments

Checkmark = Condition or mitigation was monitored

/ = Yearly or non-ongoing monitoring frequency

Sunshine Canyon Landfill Mitigation Monitoring Summary - County (01-01-2014 through 03-31-2014)

Line #	Reference #	Mitigation #	County Mitigation Measures and Conditions Monitored by Discipline	Monitoring Frequency	1/15/2014	Status*	Further Review Needed/Comments**	Resolved*	2/5/2014	Status*	Further Review Needed/Comments**	Resolved*	2/19/2014	Status*	Further Review Needed/Comments**	Resolved*	3/12/2014	Status*	Further Review Needed/Comments**	Resolved*
18	Fugitive Dust - 45.I	45.I	Cleaning of Roads	ongoing	✓	C	NONE		✓	C	NONE		✓	C	NONE		✓	C	NONE	
19	Litter Control - 46.A - .D	46A D	Litter Control Program	ongoing	✓	C	NONE		✓	C	NONE		✓	C	NONE		✓	C	NONE	
20	Gas - 52	52	Landfill Gas Collection System	ongoing	✓	C	I-a						✓	C	I-c					
21	Traffic - 57	57	Traffic Improvements	status	✓	C	NONE		✓	C	NONE		✓	C	NONE		✓	C	NONE	
22	Traffic - 60	60	Street Light Installation	status	✓	C	NONE		✓	C	NONE		✓	C	NONE		✓	C	NONE	
23	Traffic - 61	61	Traffic Minimization	ongoing	✓	C	NONE		✓	C	NONE		✓	C	NONE		✓	C	NONE	
24	Permittee Fees - 64 - 72	64- 72	Permittee Fees	info	/				/				/				/			
25	Permittee Fees - 69	69	Permittee Fees-Contributions	info	/				/				/				/			
26	Permittee Fees - 70	70	Permittee Fees	info	/				/				/				/			
27	Permittee Fees - 72	72	Permittee Fees	info	/				/				/				/			
28	Alternative Fuel Vehicles - 77.A	77. A	Alternative Fuel Vehicles-Light Duty	status	✓	C	NONE		✓	C	NONE		✓	C	NONE		✓	C	NONE	
29	Alternative Fuel Vehicles - 77.B	77. B	Alternative Fuel Vehicles-Refuse/Collection Trucks	status	✓	C	NONE		✓	C	NONE		✓	C	NONE		✓	C	NONE	
30	Alternative Fuel Vehicles - 77.C	77. C	Alternative Fuel Vehicles-Report	status																
31	Alternative Fuel Vehicles - 77.D	77. D	Alternative Fuel Vehicles-heavy-duty, alternative fuel off-	status																
32	Alternative Fuel Vehicles - 77.E	77. E	Alternative Fuel Vehicles-Non-diesel Requirements	status																
33	Alternative Fuel Vehicles - 77.F	77. F	Alternative Fuel Vehicles-Non-diesel Truck Trip	status																

* C = Compliant, NC = Non-Compliant, FRN = Further Review Needed, R = Resolved

** See Appendix I for Comments

Checkmark = Condition or mitigation was monitored

/ = Yearly or non-ongoing monitoring frequency

Sunshine Canyon Landfill Mitigation Monitoring Summary - County (01-01-2014 through 03-31-2014)

Line #	Reference #	Mitigation #	County Mitigation Measures and Conditions Monitored by Discipline	Monitoring Frequency	1/15/2014	Status*	Further Review Needed/Comments**	Resolved*	2/5/2014	Status*	Further Review Needed/Comments**	Resolved*	2/19/2014	Status*	Further Review Needed/Comments**	Resolved*	3/12/2014	Status*	Further Review Needed/Comments**	Resolved*
34	Alternative Fuel Vehicles - 77.G	77.G	Alternative Fuel Vehicles-Clean Fuel Demo Program	status																
35	Alternative Fuel Vehicles - 77.H	77.H	Alternative Fuel Vehicles-Compliance Evaluation	status																
36	Air Quality Monitoring - 81	81	Air Quality Monitoring-Testing	ongoing	/				/				/				/			
37			Air Quality Monitoring-Testing																	
38	IMP - Part I..A	IMP 1	Air Quality Monitoring-Testing	ongoing	/				/				/				/			
39			Air Quality Monitoring-Testing																	
40	IMP - Part VI	IMP 6	Air Quality Monitoring-Testing	ongoing	/				/				/				/			
41																				
42	MMRS-12/01/06		Mitigation Monitoring and Reporting Summary	info	/				/				/				/			
43			Permits																	
44	Geology - 1.15		Permittee's On-site Solid Waste Recovery and	status	/				/				/				/			
45	Surface Water - 2.09		SWRCB Permit Coverage	ongoing	/				/				/				/			
46	Surface Water - 2.15		Surface Water Preventive Maintenance Program	ongoing	✓	FRN	I-a													
47	Groundwater - 3.13		Groundwater-LFG Migration Mitigation	ongoing																
48	Groundwater - 3.14		Groundwater-Monitoring Wells	ongoing																
49	BIOTA – 4.05		Annual Fee Submission for SEA Studies	status	/				/				/				/			
50	BIOTA – 4.06		Buffer Zone Maintenance as Nature Preserve	ongoing	✓	C	NONE		✓	C	NONE		✓	C	NONE		✓	C	NONE	

* C = Compliant, NC = Non-Compliant, FRN = Further Review Needed, R = Resolved

** See Appendix I for Comments

Checkmark = Condition or mitigation was monitored

/ = Yearly or non-ongoing monitoring frequency

Sunshine Canyon Landfill Mitigation Monitoring Summary - County (01-01-2014 through 03-31-2014)

Line #	Reference #	Mitigation #	County Mitigation Measures and Conditions Monitored by Discipline	Monitoring Frequency	1/15/2014	Status*	Further Review Needed/Comments**	Resolved*	2/5/2014	Status*	Further Review Needed/Comments**	Resolved*	2/19/2014	Status*	Further Review Needed/Comments**	Resolved*	3/12/2014	Status*	Further Review Needed/Comments**	Resolved*
51	BIOTA – 4.07		Buffer Zone Maintenance-Vegetation	ongoing	✓	C	NONE		✓	C	NONE		✓	C	NONE		✓	C	NONE	
52	BIOTA – 4.08		Ridgeline Maintenance-Remain Undisturbed	ongoing	✓	C	NONE		✓	C	NONE		✓	C	NONE		✓	C	NONE	
53	BIOTA – 4.47		Cleaning of Equipment	ongoing																
54	BIOTA – 4.48		Monitoring of Vector-Attracting Items	ongoing																
55	BIOTA – 4.49		Salvaged Material Storage-Vector Control	ongoing																
56	BIOTA – 4.50		Vector Activity Monitoring	ongoing																
57	Air Quality - 6.03		Dust Emission Minimization	ongoing																
58	Air Quality - 6.04		Usage of Cut Material for Cover	ongoing	✓	C	NONE		✓	C	NONE		✓	C	NONE		✓	C	NONE	
59	Air Quality - 6.05		Operations in Accordance with SCAQMD/DOPW	info	/				/				/				/			
60	Air Quality - 6.06		Landfill Gas Control/Extraction System/Monitoring	ongoing	/				/				/				/			
61	Air Quality - 6.07		Flaring Systems	info	/				/				/				/			
62	Air Quality - 6.08		Management of Truck Arrivals	ongoing																
63	Air Quality - 6.10		Refuse Truck Mitigation	status																
64	Air Quality - 6.11		Light Duty Alternative Fuel Vehicles	status	✓	C	NONE		✓	C	NONE		✓	C	NONE		✓	C	NONE	
65	Air Quality - 6.11		Alternative Fuel Refuse Collection/Transfer Trucks	status																
66	Air Quality - 6.11		Alternative Fuel Vehicle Report Submission	status																

* C = Compliant, NC = Non-Compliant, FRN = Further Review Needed, R = Resolved

** See Appendix I for Comments

Checkmark = Condition or mitigation was monitored

/ = Yearly or non-ongoing monitoring frequency

Sunshine Canyon Landfill Mitigation Monitoring Summary - County (01-01-2014 through 03-31-2014)

Line #	Reference #	Mitigation #	County Mitigation Measures and Conditions Monitored by Discipline	Monitoring Frequency	1/15/2014	Status*	Further Review Needed/Comments**	Resolved*	2/5/2014	Status*	Further Review Needed/Comments**	Resolved*	2/19/2014	Status*	Further Review Needed/Comments**	Resolved*	3/12/2014	Status*	Further Review Needed/Comments**	Resolved*
67	Air Quality - 6.11		Heavy-duty, Alternative Fuel Off-Road Equipment Pilot	status																
68	Air Quality - 6.11		Non-Diesel, Alternative Fuel Vehicles-Transfer/Collection	status																
69	Air Quality - 6.11		Non-Diesel, Alternative Fuel VehiclesTruck Trips	status																
70	Air Quality - 6.11		Clean Fuel Demonstration Program	status																
71	Air Quality - 6.11		Compliance Evaluation	status																
72	Odor/Landfill Gas - 7.01		Landfill Gas Escape Prevention	ongoing	✓	C	NONE		✓	C	NONE		✓	C	NONE		✓	C	NONE	
73	Odor/Landfill Gas - 7.02		Landfill Gas Collection System	ongoing	✓	C	NONE		✓	C	NONE		✓	C	NONE		✓	C	NONE	
74	Odor/Landfill Gas - 7.04		Gas Collection/Flare System Risk Mitigation	ongoing																
75	Odor/Landfill Gas - 7.05		Wellhead Awareness	status	✓	C	NONE		✓	C	NONE		✓	C	NONE		✓	C	NONE	
76	Odor/Landfill Gas - 7.06		Odor Control Measures	ongoing					✓	FRN	I-b									
77	Odor/Landfill Gas - 7.07		Gas Recovery and Sale	status	✓	C	I-a						✓	C	I-c					
78	Traffic/Circulation - 8.03		Street Light Installation	status	✓	C	NONE		✓	C	NONE		✓	C	NONE		✓	C	NONE	
79	Traffic/Circulation - 8.04		Truck Traffic Minimization	status																
80	Traffic/Circulation - 8.08		Tipping Fees for Partial Loads/Peak Hours	status																
81	Traffic/Circulation - 8.10		Nighttime Landfill Operations Feasibility	status	/				/				/				/			
82	Traffic/Circulation - 8.11		Parking Management along San Fernando Road	status	/				/				/				/			

* C = Compliant, NC = Non-Compliant, FRN = Further Review Needed, R = Resolved

** See Appendix I for Comments

Checkmark = Condition or mitigation was monitored

/ = Yearly or non-ongoing monitoring frequency

Sunshine Canyon Landfill Mitigation Monitoring Summary - County (01-01-2014 through 03-31-2014)

Line #	Reference #	Mitigation #	County Mitigation Measures and Conditions Monitored by Discipline	Monitoring Frequency	1/15/2014	Status*	Further Review Needed/Comments**	Resolved*	2/5/2014	Status*	Further Review Needed/Comments**	Resolved*	2/19/2014	Status*	Further Review Needed/Comments**	Resolved*	3/12/2014	Status*	Further Review Needed/Comments**	Resolved*
83	Traffic/Circulation - 8.13		Adequate Queuing	status	/				/				/				/			
84	Visual - 10.03		Landfill Flare Locations	status	/				/				/				/			
85	Visual - 10.04		Confinement of Excavation Cover Material	status																
86	Visual - 10.05		Lighting Requirements	status																
87	Visual - 10.11		Litter Control Program	ongoing																
88	Visual - 10.11		Solid Waste Load Procedures- Improperly	ongoing																
89	Visual - 10.11		Debris Removal at Entrance	ongoing	✓	FRN	I-a		✓	FRN	I-b		✓	FRN	I-c		✓	FRN	I-d	
90	Visual - 10.11		Litter Control-Fencing	ongoing																
91	Visual - 10.11		Periodic Litter Pickup	ongoing									✓	FRN	I-c		✓	FRN	I-d	
92	Visual - 10.11		Litter Control-Additional Measures	ongoing																
93	Visual - 10.12		Discharge Control/Litter Recovery	status																
94	Water Conserv. - 11.01		Water Conservation	ongoing	✓	C	NONE		✓	C	NONE		✓	C	NONE		✓	C	NONE	
95	Recycling - 14.01		On-site Waste Diversion/Recycling	ongoing	✓	C	NONE		✓	C	NONE		✓	C	NONE		✓	C	NONE	
96	Recycling - 14.03		Tonnage Disposal Determination	info	/				/				/				/			
97	Recycling - 14.04		Recycling-Variou Tasks	info	/				/				/				/			
98			Clean Dirt Procedures																	

* C = Compliant, NC = Non-Compliant, FRN = Further Review Needed, R = Resolved

** See Appendix I for Comments

Checkmark = Condition or mitigation was monitored

/ = Yearly or non-ongoing monitoring frequency

Sunshine Canyon Landfill Mitigation Monitoring Summary - County (01-01-2014 through 03-31-2014)

Line #	Reference #	Mitigation #	County Mitigation Measures and Conditions Monitored by Discipline	Monitoring Frequency	1/15/2014	Status*	Further Review Needed/Comments**	Resolved*	2/5/2014	Status*	Further Review Needed/Comments**	Resolved*	2/19/2014	Status*	Further Review Needed/Comments**	Resolved*	3/12/2014	Status*	Further Review Needed/Comments**	Resolved*
99	Site - 15.11		Reclaimed Water Utilization	status																
100	Site - 15.12		Water Conservation Measures	ongoing																
101	Admin Rpts/Pgms - 17.4		Operation Compliance	info	/				/				/				/			
102	Admin Rpts/Pgms - 17.10		Fill Sequencing Plans	status																
103	Admin Rpts/Pgms - 17.15		Quarterly Newsletter	status																
104	Landfill Operation - 18.7		Graffiti Removal/Deterrent Plan	ongoing	✓	C	NONE		✓	C	NONE		✓	C	NONE		✓	C	NONE	
122																				
123	Civil & Geotechnical Engineer																			
124																				
125																				
126	Revegetation - 44.C	44. C	Cut Slope Requirements	ongoing																
127																				
128	Geology - 1.01		Survey Monument Locations	ongoing																
129	Geology - 1.02		Seismic Design	ongoing																
130	Geology - 1.03		Maximum Refuse Slope Gradients	ongoing																
131	Geology - 1.04		Maximum Refuse Slope Gradients	ongoing																
132	Geology - 1.05		Unsuitable Material Procedures	ongoing																

* C = Compliant, NC = Non-Compliant, FRN = Further Review Needed, R = Resolved

** See Appendix I for Comments

Checkmark = Condition or mitigation was monitored

/ = Yearly or non-ongoing monitoring frequency

Sunshine Canyon Landfill Mitigation Monitoring Summary - County (01-01-2014 through 03-31-2014)

Line #	Reference #	Mitigation #	County Mitigation Measures and Conditions Monitored by Discipline	Monitoring Frequency	1/15/2014	Status*	Further Review Needed/Comments**	Resolved*	2/5/2014	Status*	Further Review Needed/Comments**	Resolved*	2/19/2014	Status*	Further Review Needed/Comments**	Resolved*	3/12/2014	Status*	Further Review Needed/Comments**	Resolved*
133	Geology - 1.06		Grading Activities Procedures	ongoing																
134	Geology - 1.07		Grading Activities Procedures	ongoing													✓	FRN	I-d	
135	Geology - 1.09		Outer Perimeter Ridgeline Requirements	info																
136	Geology - 1.12		Soil Stabilization	ongoing																
137	Geology - 1.16		Checklists/Surveys Following Earthquake	upon event																
138	Geology - 1.18		Alluvium- Removal/Replacement	ongoing																
139	Geology - 1.19		Landfill Design/Construction	ongoing																
140	Geology - 1.20		Landfill Design/Construction- Foundations	ongoing																
141	Surface Water - 2.03		Surface Drainage Control Facilities	ongoing																
142	Surface Water - 2.05		Underdrain Requirements	ongoing																
143	Surface Water - 2.06		Final Cover for Surface Water Runoff Control	ongoing																
144	Groundwater - 3.02		Liner System Requirements	ongoing																
145	Groundwater - 3.04		Onsite Inspector for Liner Installation	ongoing																
146	Groundwater - 3.09		Alluvium Removal	ongoing																
147	Visual – 10.01		Landfill Elevations	ongoing																
148	Visual – 10.02		Final Fill Elevations	ongoing																
149																				

* C = Compliant, NC = Non-Compliant, FRN = Further Review Needed, R = Resolved

** See Appendix I for Comments

Checkmark = Condition or mitigation was monitored

/ = Yearly or non-ongoing monitoring frequency

Sunshine Canyon Landfill Mitigation Monitoring Summary - County (01-01-2014 through 03-31-2014)

Line #	Reference #	Mitigation #	County Mitigation Measures and Conditions Monitored by Discipline	Monitoring Frequency	1/15/2014	Status*	Further Review Needed/Comments**	Resolved*	2/5/2014	Status*	Further Review Needed/Comments**	Resolved*	2/19/2014	Status*	Further Review Needed/Comments**	Resolved*	3/12/2014	Status*	Further Review Needed/Comments**	Resolved*
150	Hydrologist																			
151																				
152																				
153	Grading & Drainage - 38	38	Installation of Drainage Structures	ongoing																
154																				
155	Geology - 1.17		Landfill Design/Construction-Seismic	ongoing																
156	Surface Water - 2.01		Surface Water Runoff Interception	ongoing																
157	Surface Water - 2.02		Surface Water Runoff Collection	ongoing																
158	Surface Water - 2.03		Surface Drainage Control-Maintenance	ongoing													✓	FRN	I-d	
159	Surface Water - 2-04		Sedimentation Basin Capabilities	ongoing																
160	Surface Water - 2.05		Underdrain Placement	ongoing	✓	FRN	I-a													
161	Surface Water - 2.07		Drainage Control System Design Approval	ongoing																
162	Surface Water - 2.08		Surface Water Runoff-Drainage System	ongoing																
163	Surface Water - 2.10		Surface Water Collection System-Monitoring	ongoing																
164	Surface Water - 2.11		Surface Water Quality-Collection/Monitoring	ongoing																
165	Surface Water - 2.12		Permanent/Temporary Drainage Facilities	ongoing	✓	FRN	I-a													
166	Surface Water - 2.13		Permanent/Temporary Drainage Facilities	ongoing																

* C = Compliant, NC = Non-Compliant, FRN = Further Review Needed, R = Resolved

** See Appendix I for Comments

Checkmark = Condition or mitigation was monitored

/ = Yearly or non-ongoing monitoring frequency

Sunshine Canyon Landfill Mitigation Monitoring Summary - County (01-01-2014 through 03-31-2014)

Line #	Reference #	Mitigation #	County Mitigation Measures and Conditions Monitored by Discipline	Monitoring Frequency	1/15/2014	Status*	Further Review Needed/Comments**	Resolved*	2/5/2014	Status*	Further Review Needed/Comments**	Resolved*	2/19/2014	Status*	Further Review Needed/Comments**	Resolved*	3/12/2014	Status*	Further Review Needed/Comments**	Resolved*
167	Surface Water - 2.14		Erosion Control Plan	ongoing	✓	FRN	I-a													
168	Groundwater - 3.03		Interception of Groundwater Seepage	ongoing																
169	Groundwater - 3.06		Monitoring Wells	ongoing																
170																				
171	Biologist																			
172																				
173																				
174	Revegetation - 44	44	Revegetation/Cover Requirements	ongoing																
175	Revegetation - 44.A	44.A	Temporary Hydroseed Vegetation	ongoing	✓	FRN	I-a		✓	FRN	I-b		✓	FRN	I-c		✓	FRN	I-d	
176	Revegetation - 44.B	44.B	Interim Reclamation/Revegetation	ongoing	✓	FRN	I-a		✓	FRN	I-b		✓	FRN	I-c		✓	FRN	I-d	
177	Revegetation - 44.D	44.D	Final Fill Slope Requirements	ongoing																
178	Revegetation - 44.E	44.E		ongoing																
179																				
180	Geology - 1.13		Drainage Plan Approval	ongoing	✓	FRN	I-a		✓	FRN	I-b		✓	FRN	I-c		✓	FRN	I-d	
181	Geology - 1.14		Personnel Retention for Monitoring Soil Erosion	ongoing	✓	FRN	I-a		✓	FRN	I-b		✓	FRN	I-c		✓	FRN	I-d	
182	Groundwater - 3.11		Irrigation/Revegetation Management-Personnel	ongoing																
183	BIOTA – 4.10		Oak Tree Permit	ongoing																
184	BIOTA – 4.11		Oak Tree Mitigation Plan	ongoing																

* C = Compliant, NC = Non-Compliant, FRN = Further Review Needed, R = Resolved

** See Appendix I for Comments

Checkmark = Condition or mitigation was monitored

/ = Yearly or non-ongoing monitoring frequency

Sunshine Canyon Landfill Mitigation Monitoring Summary - County (01-01-2014 through 03-31-2014)

Line #	Reference #	Mitigation #	County Mitigation Measures and Conditions Monitored by Discipline	Monitoring Frequency	1/15/2014	Status*	Further Review Needed/Comments**	Resolved*	2/5/2014	Status*	Further Review Needed/Comments**	Resolved*	2/19/2014	Status*	Further Review Needed/Comments**	Resolved*	3/12/2014	Status*	Further Review Needed/Comments**	Resolved*
185	BIOTA – 4.13		Oak Tree Mitigation Counting	ongoing	✓	FRN	I-a										✓	C	I-d	
186	BIOTA – 4.20		Poultry Wire Screen	ongoing																
187	BIOTA – 4.24		Drip Irrigation	ongoing																
188	BIOTA – 4.27		Coastal Sage Scrub Mitigation Plan	ongoing	✓	FRN	I-a		✓	FRN	I-b						✓	FRN	I-d	
189	BIOTA – 4.28		Coastal Sage Scrub Seeding	ongoing																
190	BIOTA – 4.29		San Diego Horned Lizard Mitigation	ongoing	✓	FRN	I-a													
191	BIOTA – 4.30		California Gnatcatcher Surveys	ongoing	✓	FRN	I-a										✓	C	I-d	
192	BIOTA – 4.31		Least Bell's Vireo Surveys	ongoing																
193	BIOTA – 4.32		Western Burrowing Owl Surveys	ongoing																
194	BIOTA – 4.33		Migratory Bird Treaty Act	ongoing	✓	FRN	I-a										✓	C	I-d	
195	BIOTA – 4.34		Raptor Nests Habitat	ongoing	✓	FRN	I-a										✓	C	I-d	
196	BIOTA – 4.36		Personnel Retention for Monitoring Revegetation Plan	ongoing																
197	BIOTA – 4.37		Personnel Retention for Monitoring Revegetation Plan,	status																
198	BIOTA – 4.38		Green Waste Material	ongoing																
199	BIOTA – 4.39		Revegetation of Slopes/Fill Areas	ongoing																
200	BIOTA – 4.41		Revegetation Plan- Replacement Cover	ongoing																
201	BIOTA – 4.42		Interim Vegetation	ongoing	✓	FRN	I-a		✓	FRN	I-b		✓	FRN	I-c		✓	FRN	I-d	

* C = Compliant, NC = Non-Compliant, FRN = Further Review Needed, R = Resolved

** See Appendix I for Comments

Checkmark = Condition or mitigation was monitored

/ = Yearly or non-ongoing monitoring frequency

Sunshine Canyon Landfill Mitigation Monitoring Summary - County (01-01-2014 through 03-31-2014)

Line #	Reference #	Mitigation #	County Mitigation Measures and Conditions Monitored by Discipline	Monitoring Frequency	1/15/2014	Status*	Further Review Needed/Comments**	Resolved*	2/5/2014	Status*	Further Review Needed/Comments**	Resolved*	2/19/2014	Status*	Further Review Needed/Comments**	Resolved*	3/12/2014	Status*	Further Review Needed/Comments**	Resolved*
202	BIOTA – 4.43		Replacement Riparian Habitat	status																
203	Air Quality - 6.02		Dust Control	ongoing	✓	FRN	I-a		✓	FRN	I-b		✓	FRN	I-c		✓	C	NONE	
204	Visual – 10.06		Upper Ridge Planting/Revegetation	ongoing																
205	Visual – 10.07		Tree Planting Around Perimeter	ongoing																
206	Visual – 10.08		Cover/Revegetation Requirements	ongoing																
207	Visual – 10.08		Solid Waste Disposal Procedures	ongoing																
208	Visual – 10.08		Final Cut Slope Steepness	ongoing																
209	Visual – 10.08		Final Fill Slopes- Reclamation/Revegetation	status																
210	Visual – 10.08		Revegetation Requirements	status	✓	FRN	I-a		✓	FRN	I-b		✓	FRN	I-c		✓	FRN	I-d	
211	Visual – 10.09		Final Cover Composition Requirements	ongoing																
212	Visual – 10.10		Buffer Zone Maintenance	ongoing																
213	Water Conservation - 11.02		Plant Species	ongoing																
214	Fire Service - 12.01		Brush Clearance Measures	ongoing																
215																				
216	Air Quality & Noise Specialist																			
217																				
218																				

* C = Compliant, NC = Non-Compliant, FRN = Further Review Needed, R = Resolved

** See Appendix I for Comments

Checkmark = Condition or mitigation was monitored

/ = Yearly or non-ongoing monitoring frequency

Sunshine Canyon Landfill Mitigation Monitoring Summary - County (01-01-2014 through 03-31-2014)

Line #	Reference #	Mitigation #	County Mitigation Measures and Conditions Monitored by Discipline	Monitoring Frequency	1/15/2014	Status*	Further Review Needed/Comments**	Resolved*	2/5/2014	Status*	Further Review Needed/Comments**	Resolved*	2/19/2014	Status*	Further Review Needed/Comments**	Resolved*	3/12/2014	Status*	Further Review Needed/Comments**	Resolved*
219	Fugitive Dust - 45.F	45.F	Fugitive Dust Monitoring	ongoing																
220	Fugitive Dust - 45.I	45.I	Paved Roads-Cleaning	ongoing	✓	C	NONE		✓	C	NONE		✓	C	NONE		✓	C	NONE	
221	Fugitive Dust - 45.N	45.N	Report Submission-Dust/Odor	every quarter																
222	Air Quality Monitoring - 81	81	Air Quality Monitoring-Tests	ongoing																
223																				
224																				
225	Air Quality – 6.01		Fugitive Dust Aversion	ongoing	✓	C	NONE		✓	C	NONE		✓	C	NONE		✓	C	NONE	
226	Air Quality – 6.01		Working Face Requirements	ongoing	✓	C	NONE		✓	C	NONE		✓	C	NONE		✓	C	NONE	
227	Air Quality – 6.01		Erosion Control-Daily Cover	ongoing	✓	C	NONE		✓	C	NONE		✓	C	NONE		✓	C	NONE	
228	Air Quality – 6.01		Soil Stockpile Requirements	ongoing	✓	C	NONE		✓	C	NONE		✓	C	NONE		✓	C	NONE	
229	Air Quality – 6.01		Active Area Fill	ongoing	✓	C	NONE		✓	C	NONE		✓	C	NONE		✓	C	NONE	
230	Air Quality – 6.01		Soil Sealant	ongoing	✓	FRN	I-a		✓	FRN	I-b		✓	FRN	I-c		✓	C	NONE	
231	Air Quality – 6.01		Dust Emissions-Road Maintenance	ongoing	✓	C	NONE		✓	C	NONE		✓	C	NONE		✓	C	NONE	
232	Air Quality – 6.01		Access Roads-Paving	ongoing	✓	C	NONE		✓	C	NONE		✓	C	NONE		✓	C	NONE	
233	Air Quality – 6.01		Dust Generation-Dumping	ongoing	✓	C	NONE		✓	C	NONE		✓	C	NONE		✓	C	NONE	
234	Air Quality – 6.01		Water Tanks/Piping Maintenance	ongoing	✓	C	NONE		✓	C	NONE		✓	C	NONE		✓	C	NONE	

* C = Compliant, NC = Non-Compliant, FRN = Further Review Needed, R = Resolved

** See Appendix I for Comments

Checkmark = Condition or mitigation was monitored

/ = Yearly or non-ongoing monitoring frequency

Sunshine Canyon Landfill Mitigation Monitoring Summary - County (01-01-2014 through 03-31-2014)

Line #	Reference #	Mitigation #	County Mitigation Measures and Conditions Monitored by Discipline	Monitoring Frequency	1/15/2014	Status*	Further Review Needed/Comments**	Resolved*	2/5/2014	Status*	Further Review Needed/Comments**	Resolved*	2/19/2014	Status*	Further Review Needed/Comments**	Resolved*	3/12/2014	Status*	Further Review Needed/Comments**	Resolved*
235	Air Quality – 6.01		Wind Speed Monitoring	ongoing	✓	C	NONE		✓	C	NONE		✓	C	NONE		✓	C	NONE	
236	Air Quality – 6.01		Report Submission-Dust/Odor	every quarter	/				/				/				/			
237	Odor/Landfill Gas – 7.03		Odor/Landfill Gas Monitoring Program	ongoing	/				/				/				/			
238	Odor/Landfill Gas – 7.03		Landfill Surface Sampling	ongoing	/				/				/				/			
239	Odor/Landfill Gas – 7.03		Landfill Perimeter Air Samples	ongoing	/				/				/				/			
240	Odor/Landfill Gas – 7.03		Landfill Surface Monitoring	ongoing	/				/				/				/			
241	Odor/Landfill Gas – 7.03		LFG Collection System Monitoring	ongoing	/				/				/				/			
242	Noise – 9.01		Landfill Access/Operation	info	/				/				/				/			
243	Noise – 9.03		Landfill Equipment- Mufflers/Silencers	ongoing	✓	C	NONE		✓	C	NONE		✓	C	NONE		✓	C	NONE	
244	Admin Rpts/ Pgms-17.16		Air Quality Monitoring- Corrective Action Plan	ongoing	/				/				/				/			
245																				
246																				
247	Hydrology, Hazardous Waste / Risk of Upset																			
248																				
249																				
250	IMP - Part IV.E	IMP 4	Load Inspection-Random Manual	ongoing																
251																				

* C = Compliant, NC = Non-Compliant, FRN = Further Review Needed, R = Resolved

** See Appendix I for Comments

Checkmark = Condition or mitigation was monitored

/ = Yearly or non-ongoing monitoring frequency

Sunshine Canyon Landfill Mitigation Monitoring Summary - County (01-01-2014 through 03-31-2014)

Line #	Reference #	Mitigation #	County Mitigation Measures and Conditions Monitored by Discipline	Monitoring Frequency	1/15/2014	Status*	Further Review Needed/Comments**	Resolved*	2/5/2014	Status*	Further Review Needed/Comments**	Resolved*	2/19/2014	Status*	Further Review Needed/Comments**	Resolved*	3/12/2014	Status*	Further Review Needed/Comments**	Resolved*
252	Groundwater - 3.05		Leachate Collection and Removal System	ongoing																
253	Groundwater - 3.15		Underground Diesel Fuel Storage Tanks	ongoing	/	NA	NONE		/	NA	NONE		/	NA	NONE		/	NA	NONE	
254	Fire Service - 12.02		On-site Fire Response Capabilities-Operating	ongoing									✓	C	NONE					
255	Fire Service - 12.03		On-site Fire Response Capabilities-Roads/Water	ongoing	✓	FRN	I-a						✓	FRN	I-c		✓	C	I-d	
256	Fire Service - 12.04		On-site Fuel Storage Tanks-Permit Issuance	ongoing																
257	Fire Service - 12.05		Building Limits	ongoing																
258	Fire Service - 12.06		Methane Gas Monitoring-On-site Structures	ongoing									✓	C	NONE					
259	Hazardous Materials – 13.02		Waste Load Checking Program	ongoing																
260	Hazardous Materials – 13.05		Hazardous Waste Disposal	ongoing									✓	C	NONE					
261	Hazardous Materials – 13.10		Hazardous Waste-Procedures	ongoing									✓	C	NONE					
262	Hazardous Materials – 13.11		Spill Response Program	ongoing									✓	C	NONE					
263	Safety - 16.02		Injury and Illness Prevention Program	status									✓	C	NONE					
264	Safety - 16.03		Working Conditions-Monitoring	status									✓	C	NONE					
265	Safety - 16.04		Inspection Checklist-Work Area Exposure	status									✓	C	NONE					
266	Safety - 16.07		Accident/Injury Reports	status									✓	C	NONE					
267	Safety - 16.08		First-aid Kits	ongoing									✓	C	NONE					

* C = Compliant, NC = Non-Compliant, FRN = Further Review Needed, R = Resolved

** See Appendix I for Comments

Checkmark = Condition or mitigation was monitored

/ = Yearly or non-ongoing monitoring frequency

Sunshine Canyon Landfill Mitigation Monitoring Summary - County (01-01-2014 through 03-31-2014)

Line #	Reference #	Mitigation #	County Mitigation Measures and Conditions Monitored by Discipline	Monitoring Frequency	1/15/2014	Status*	Further Review Needed/Comments**	Resolved*	2/5/2014	Status*	Further Review Needed/Comments**	Resolved*	2/19/2014	Status*	Further Review Needed/Comments**	Resolved*	3/12/2014	Status*	Further Review Needed/Comments**	Resolved*
268	Safety - 16.10		Lockout/Blackout Procedures	status									✓	C	NONE					
269	Safety - 16.11		Personal Protective Equipment	status									✓	C	NONE					
270	Landfill Operation - 18.8		Prohibited Waste Procedures	ongoing									✓	C	NONE					
271																				
272	Archaeologist																			
273																				
274																				
275	Ecological Significance - 62	62	Archaeological/Paleontologica I Identification/Conservation	ongoing	/	NA	NONE		/	NA	NONE		/	NA	NONE		✓	FRN	I-d	
276	IMP - Part VII.B	IMP 7	Archaeological/Paleontological	ongoing	/	NA	NONE		/	NA	NONE		/	NA	NONE		/	NA	NONE	
277	Archaeological – 5.01		Archaeological Resurvey	ongoing	/	NA	NONE		/	NA	NONE		/	NA	NONE		/	NA	NONE	
278	Archaeological – 5.02		Onsite Archaeologist	ongoing	/	NA	NONE		/	NA	NONE		/	NA	NONE		/	NA	NONE	
279	Archaeological – 5.03		Onsite Paleontologist	ongoing	/	NA	NONE		/	NA	NONE		/	NA	NONE		✓	FRN	I-d	
280	Archaeological – 5.04		Archaeological/Paleontologica I Identification Instruction	ongoing	/	NA	NONE		/	NA	NONE		/	NA	NONE		/	NA	NONE	
281	Archaeological – 5.05		Archaeological Resource Cura	ongoing	/	NA	NONE		/	NA	NONE		/	NA	NONE		/	NA	NONE	
282																				

* C = Compliant, NC = Non-Compliant, FRN = Further Review Needed, R = Resolved

** See Appendix I for Comments

Checkmark = Condition or mitigation was monitored

/ = Yearly or non-ongoing monitoring frequency

Further Review Needed-Comments/ I-a through I-d First Quarter 2014 Site Visits **Appendix I**

Discipline	City Condition Reference # / Mitigation #	County Condition Reference # / Mitigation #	Responsible Agency	Further Review Needed-Comments
Project Manager	Q – B.2.c		City Planning	<p>I-a: The County needs to approve the proposed drainage system for the realignment of the access road before initiating the grading.</p> <p>The impacts to trees need to be approved by the City Street Department. Biological, archeological, and paleontological assessments must be performed and provided to the appropriate agencies, if required.</p> <p>I-d: The County needs to approve the proposed drainage system for the realignment of the access road before initiating the grading.</p> <p>Republic provided documentation showing a bird survey tree count and mitigation tree banking.</p>
		Biota - 4.13	County Forester	I-a and I-d: See Q – B.2.c above
		Biota - 4.27, 4.29, 4.30, 4.33, 4.34	California Fish and Wildlife	I-a and I-d: See Q – B.2.c above
	Q - C.10.c		City Planning	<p>I-a: The DTE gas-to-energy was having foundations being poured for gas pre-treatment equipment skids.</p> <p>I-c: The start of commissioning of the gas-to-energy facility is scheduled for early May 2014. The initial run test of the gas turbine generators is scheduled for July 8, 2014 with electric sales in August.</p>

Discipline	City Condition Reference # / Mitigation #	County Condition Reference #/ Mitigation #	Responsible Agency	Further Review Needed-Comments
Project Manager		Odor/Landfill Gas - 7.07	County Planning/ SCAQMD SCL-LEA	I-a and I-c: See Q - C.10.c above.
		Gas - 52	County DPW EPD/SCL-LEA County Forester Fire Warden	I-a and I-c: See Q - C.10.c above.
	T - 4		City Planning, City Fire Department	I-c: There is no secondary access road now that the Flare 8 road has been eliminated. The need for having a secondary access road was discussed with the Republic operations manager with the possibility of just grading the City south top deck oil field road for passenger car use. Tim Johnson stated he would look into the feasibility of this option.
		Fire Service - 12.03	Dept. of Forester	I-c: See T - 4 above.
		Revegetation - 44 F	SCL-LEA/ County DPW EPD Regional Planning County Biologist	I-a through I-d: See M - 4.1.1/6 I-l below under Biologist Discipline.

Discipline	City Condition Reference # / Mitigation #	County Condition Reference #/ Mitigation #	Responsible Agency	Further Review Needed-Comments
Project Manager	M – 4.2.12/28		City Planning/ SCAQMD	<p>I-a: Areas of the City north benches were noted to have blowing dust during wind gusts.</p> <p>I-b: The monitors observe exposed trash mixed in with cover soil near the City/County line on the top deck. Republic staff observed the condition and stated that action would be taken to correct any deficiencies.</p> <p>I-c: The high winds caused some localized blowing dust on the County top deck and on the City north slopes. Soil sealant should have been applied to the areas observed having blowing dust on January 15 and February 19, 2014.</p>
		Air Quality - 6.01	SCAQMD/ SCL-LEA	I-a, I-b, and I-c: See M – 4.2.12/28 above.
		Fugitive Dust - 45.F	County DPH/ County LEA County DPW-EPD County Biologist	I-a, I-b, and I-c: See M – 4.2.12/28 above.
		Air Quality - 6.02	County DPH	I-a, I-b, and I-c: See M – 4.2.12/28 above.
	M - 4.2.13/33		City Planning/ SCAQMD SCL-LEA	I-b: It was observed on the County top deck that gas recovery Well #691 was leaking landfill gas at the well head connections. Republic was aware of this and had repair parts ordered.

Discipline	City Condition Reference # / Mitigation #	County Condition Reference # / Mitigation #	Responsible Agency	Further Review Needed-Comments
Project Manager	M -4.2.13/ 29, 30, 32, 33, 34		City Planning/SCL- LEA/SCAQMD	I-a, I-c, and I-d on 33 and I-a through I-d on all others: Compliance with these mitigation measures concerning landfill gas monitoring and odor control and detection is being monitored by a multi-agency team led by the SCAQMD. Only obvious gas emission sources, lack of cover, or exposed trash resulting in odor and gas emissions observed during the monitoring visit will be reported. None of these were observed during the quarterly monitoring visits this period.
		Amendment 45.N - 4.a, 4.c, 4.d	County DPW-EPD	See M-4.2.13/29, 30, 32, 33, and 34 above.
		Amendment 45.N - 5	County DPW-EPD	See M-4.2.13/29, 30, 32, 33, and 34 above.
		Surface Water - 2.15	County DPW EPD/ LARWQCB, SCL- LEA	I-a: See M-4.3.1/46 below.
		Odor/Landfill Gas - 7.06	County DPW- EPD/SCL- LEA/SCAQMD	I-b: See M-4.2.13/33 above.

Discipline	City Condition Reference # / Mitigation #	County Condition Reference # / Mitigation #	Responsible Agency	Further Review Needed-Comments
Project Manager	M - 4.4.2/69		City Planning	I-b: There are still City of Los Angeles property transfer issues with the wetland and riparian mitigation at the Chatsworth Reservoir. The Corps of Engineers had given an extension of time on the implementation of a mitigation program until the end of 2014. A status update should be provided to the City and County's Planning Departments and the City Councilman's office indicating problem areas and proposed actions. The Corps of Engineers and California Fish and Wildlife should be provided a copy.
	M - 4.9.3/109		City Planning	<p>I-a and I-d: Windblown litter and dumped debris was noted between the front exterior wall of the terminal basin and the site slump stone wall along San Fernando Road.</p> <p>I-a, I-b, I-c, and I-d: Windblown litter was observed on the back hillsides of Basin A and Basin B.</p> <p>I-c: Sierra Highway near the I-14 overpass was clean except for three isolated areas of illegal dumping, a door and two large trash bags full of waste.</p> <p>I-d: Sierra Highway at the I-14 overpass was clean with no litter or illegal dumping. There was a box and tarp dumped further north on Sierra Highway.</p>
		Visual - 10.11	SCL-LEA	I-a through I-d: see M - 4.9.3/109 above.

Discipline	City Condition Reference # / Mitigation #	County Condition Reference #/ Mitigation #	Responsible Agency	Further Review Needed-Comments
Civil and Geotechnical Engineer	M - 4.1.1 / 2, 4 and 5		City Planning/ LARWQCB CalRecycle SCL-LEA LADBS PW-BOE	I-d: The excavation plans for the realignment access road has portions outside of the cut and fill footprint of the landfill. The plans should be provided to and approved by the City of Los Angeles Department of Building and Safety and the County Department of Public Works for those areas.
		Geology - 1.07	County DPW EPD/ County LEA	I-d: See M - 4.1.1 / 2, 4 and 5 above.
Hydrologist	M-4.3.1/36		City Planning/ LARWQCB CalRecycle SCL-LEA PW-BOE	I-d: During the major rain storms in late February, significant ponding occurred in the CC-2 and CC-3A area just north of the CC-3A buttress. The southern portion of CC-3A had areas washed out and there was damage to the HDPE drainage channel. The LARQCB observed these site conditions and issued a notice of violation. At the time of monitoring, significant progress was made correcting the site conditions.
		Surface Water - 2.03	County DPW EPD/ LARWQCB SCL-LEA	I-d: See M-4.3.1/36 above.
	M - 4.3.1/ 38		City Planning/ LARWQCB CalRecycle SCL-LEA PW-BOE	I-a: Temporary and permanent drainage ditches have been installed to convey water to the basins. The majority of inactive and/or areas that have been disturbed have no temporary or permanent vegetation or other surface cover to retard erosion.

Discipline	City Condition Reference # / Mitigation #	County Condition Reference #/ Mitigation #	Responsible Agency	Further Review Needed-Comments
Hydrologist		Surface Water - 2.12	County DPW EPD/ LARWQCB SCL-LEA	See M - 4.3.1/ 38 above.
	M - 4.3.1/ 45		City Planning/ LARWQCB CalRecycle SCL-LEA PW-BOE LADBS	I-a: An erosion control plan should be available on site for review by the agencies and monitor.
		Surface Water - 2.14	LARWQCB / County DPW EPD	I-a: See M - 4.3.1/ 45 above.

Discipline	City Condition Reference # / Mitigation #	County Condition Reference # / Mitigation #	Responsible Agency	Further Review Needed-Comments
Hydrologist	M - 4.3.1/ 46		City Planning/ LARWQCB CalRecycle PW-BOE	<p>I-a: It was observed that along a portion of the west side drainage channel between Basin A and Basin D, the floor of the basin is uplifted in the middle with large cracks and weeds growing. This indicates the presence of moisture interacting with possible swelling soils. At the connection between the V-ditch feeding the channel, there is a gap between shotcrete and soil which is a conduit for water to infiltrate beneath the channel shotcrete into the subbase soil. Crack mention in previous visits on the west side (native soil side) of the channel are getting worse with concrete spalling and pieces falling off. On the east side (landfill side) the tree is growing bigger. The roots could eventually bust the concrete. In a large storm the conditions noted above could worsen leading to significant damage to the channel.</p> <p>Segments of the channel leaving Basin D have been relined with HDPE. The beginning of the liner may need to be reinforced to avoid water flowing under the liner as the row of sand bags may not be enough to stop this from occurring.</p>

Discipline	City Condition Reference # / Mitigation #	County Condition Reference #/ Mitigation #	Responsible Agency	Further Review Needed-Comments
Hydrologist	M - 4.3.1/49		City Planning/ LARWQCB CalRecycle PW-BOE	I-a: A large diameter corrugated steel drain pipe was unearthed in the City south soil stockpile and a seep was observed that was feeding this pipe. Water was ponding a few feet high at the toe of a vertical slope. This should be addressed as it poses a stability risk. A smaller seep coming from around an abandoned gas pipeline on the slope was also observed to the east of the ponding water. An erosion gully due to the seep was observed.
		Surface Water - 2.05	LARWQCB / County DPW EPD	I-a: See M - 4.3.1/49 above.

Discipline	City Condition Reference # / Mitigation #	County Condition Reference # / Mitigation #	Responsible Agency	Further Review Needed-Comments
Biologist	M - 4.1.1 / 6		City Planning/ LARWQCB CalRecycle SCL-LEA LADBS	<p>I-a: No hydroseeding of interim or inactive areas had occurred. Republic stated that their biological consultant was reviewing the proposed seed mix and that soil sealant was being used to control dust on the un-vegetated areas.</p> <p>I-b: The revegetation hydroseeding had not commenced as of this monitoring visit.</p> <p>I-c: The hydroseeding of inactive areas had not started due to delivery problems with the supplies needed for the hydroseeding company. Due to the high winds, there were some inactive areas that had blowing dust.</p> <p>I-d: The hydroseeding materials were received by the contractor and hydroseeding was scheduled to occur in April.</p>
		Geology - 1.14	LARWQCB/ County Forester	I-a through I-d: See M - 4.1.1/6 above.
	M - 4.2.11 / 23		City Planning	I-a through I-d: See M - 4.1.1/6 above.
		Geology - 1.13	County DPW EPD/ County Forester LARWQCB	I-a through I-d: See M - 4.1.1/6 above.
	M - 4.2.12		SCL-LEA/ City Planning	I-a through I-d: See M - 4.1.1/6 above.
		Revegetation - 44.A	SCL-LEA/ County DPW EPD Regional Planning County Biologist	I-a through I-d: See M - 4.1.1/6 above.

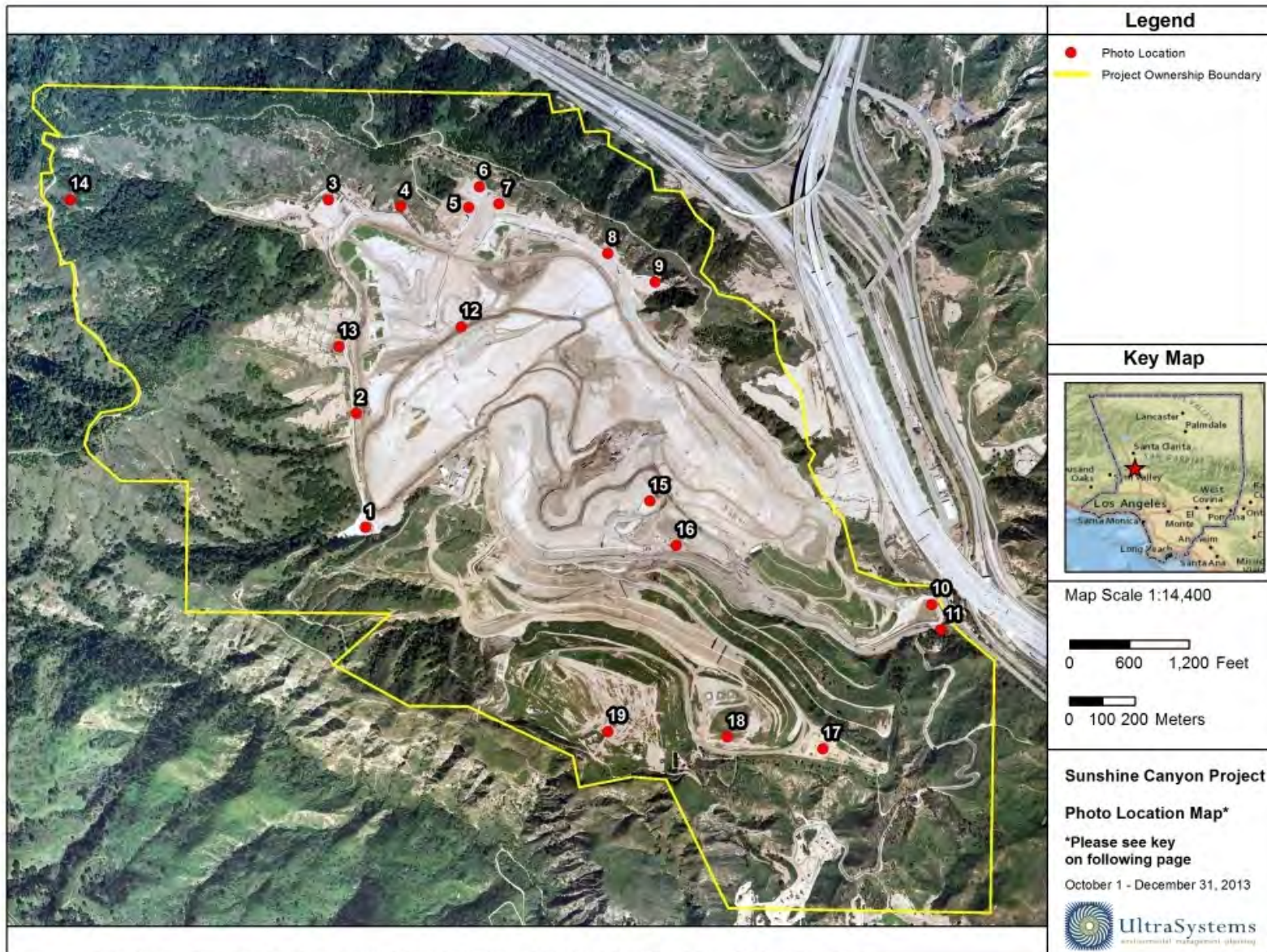
Discipline	City Condition Reference # / Mitigation #	County Condition Reference #/ Mitigation #	Responsible Agency	Further Review Needed-Comments
Biologist		Biota - 4.42	SCL-LEA	I-a through I-d: See M - 4.1.1/6 above.
		Air Quality - 6.02	SCAQMD/ SCL-LEA	I-a through I-d: See M - 4.1.1/6 above.
		Visual - 10.08	County Forester	I-a through I-d: See M - 4.1.1/6 above.
	M - 4.4.1 / 60		City Planning	I-a: Republic state that it will be in the maintenance mode on City Deck C sage mitigation until 2014. Container plants have been planted, replacing plants that died. PRG, the maintenance company, is on site weekly performing necessary weeding and maintenance. Architerra, the landscape design firm, will perform monthly and a one-year evaluations. Details on the status of Deck C's success will be included in the quarterly vegetation report. I-b: The City sage mitigation Deck C was replanted with sage and other plants that died. Salt and quail bush was continuing to be the predominant plants. I-d: The City Deck C sage mitigation area was observed and the salt and quail bush was growing and was approximately 70-80% of the surviving plants. Sage and other plants had spotty success.
		Biota - 4.27	SCL-LEA/CDFW	I-a: The County sage mitigation area had no revegetation activity occurring. I-b: The County sage mitigation area had no revegetation activity occurring. I-d: The County sage area was much greener and appeared more filled in with vegetative growth due to the February rains.

Discipline	City Condition Reference # / Mitigation #	County Condition Reference # / Mitigation #	Responsible Agency	Further Review Needed-Comments
Biologist	M-4.4.1/67		City Planning, SCL- LEA, CDFW	I-d: Observed the tree and vegetation removal along the landfill entrance road for the access road realignment. Numerous oak trees were removed along with some coastal sage vegetation. Biological monitoring was done by Republic before the start of tree and vegetation removal. Additional onsite biological monitoring will be needed from March 15-August 1 if more removal is done.
		Biota -4.33	County DPW, SCL- LEA, CDFW	I-d: See M-4.4.1/67 above.
	M-4.4.3/82		City Planning	I-d: Numerous trees were removed for the main access road realignment. Trees were counted and mitigated for in 2010. The City Department of Public Works Street Trees Division should confirm the mitigation summary tally.
		Biota-4.13	County Planning	I-d: See M-4.4.3/82
Air Quality & Noise Specialist	M - 4.2.11/20		City Planning/ SCAQMD SCL-LEA LADBS	I-a through I-d: Construction areas that become non-active and un-vegetated slopes should be evaluated for dust potential and soil sealant applied when required.

Discipline	City Condition Reference # / Mitigation #	County Condition Reference # / Mitigation #	Responsible Agency	Further Review Needed-Comments
Hydrology, Hazardous Waste/ Risk of Upset	M - 4.9.4/121		City Planning/ CalRecycle Cal/OSHA SCL-LEA	I-a: The leachate facility electrical lines are hanging on branches and pose a fire hazard. I-c: Republic staff was aware of the tree branches hanging over the electric wires and stated a tree trimmer was scheduled for February 24, 2014. I-d: Observed that the trees at the leachate treatment facility had been rimmed to clear the power lines. There was on stray limb that needed to be trimmed.
		Fire Service - 12.03	Department of Forester/Fire Warden	I-a, I-c, and I-d: See M - 4.9.4/121 above.
	M-4.9.4/125		City Planning/ CalRecycle Cal/OSHA SCL-LEA	I-a: The terminal basin gate was lying on the ground. Republic staff was scheduling repair. I-c: The southern oil field perimeter gate was unlocked. Republic staff stated that a DWP employee uses this access and cuts any locks put on the gate. I-d: The southern oil field perimeter gate was observed to be unlocked and standing open.
Archaeologist	M-4.19.1/183		City Planning	I-d: An archaeological survey needs to be performed on the main access road realignment area before grading proceeds.
		Ecological Significance 62	County Planning	I-d: See M-4.19.1/183 above.
Paleontologist	M-4.19.2/187		City Planning	A paleontological survey and field monitoring need to be performed on the main access road realignment area before the start of grading during grading operations.
		Ecological Significance 62	County Planning	I-d: See M-4.19.2/187 above.

Appendix II

Relevant Site Photos



Project Location Map – Photo Map Key

1. Basin A
2. Westside Drainage Channel
3. Basin D
4. Basin D North Drainage
5. Flare 9 and Flare 10
6. Gas-to-Energy Facility
7. Edison Equipment Site
8. Edison Sales Energy Power Poles
9. Basin B
10. Terminal Basin
11. Leachate Treatment Facility
12. County Top Deck
13. County Sage Mitigation
14. Big Cone Fir Mitigation
15. City Active Fill Area
16. Cell CC3A Buttress
17. City Sage Mitigation - Deck C
18. City Sage Mitigation - Deck B
19. City Sage Mitigation - Deck A



Photo 1: Basin A: January 15, 2014



Photo 2: Basin A: January 15, 2014



Photo 3: Basin A: January 15, 2014



Photo 4: Basin A: January 15, 2014



Photo 5: Basin A: February 5, 2014



Photo 6: Basin A: February 5, 2014



Photo 7: Basin A: February 5, 2014



Photo 8: Basin A: February 5, 2014

Photo 8: B



Photo 9: Basin A: February 5, 2014



Photo 10: Basin A: February 19, 2014



Photo 11: Basin A: February 19, 2014



Photo 12: Basin A: February 19, 2014



Photo 13: Basin A: March 12, 2014



Photo 14: Basin A: March 12, 2014

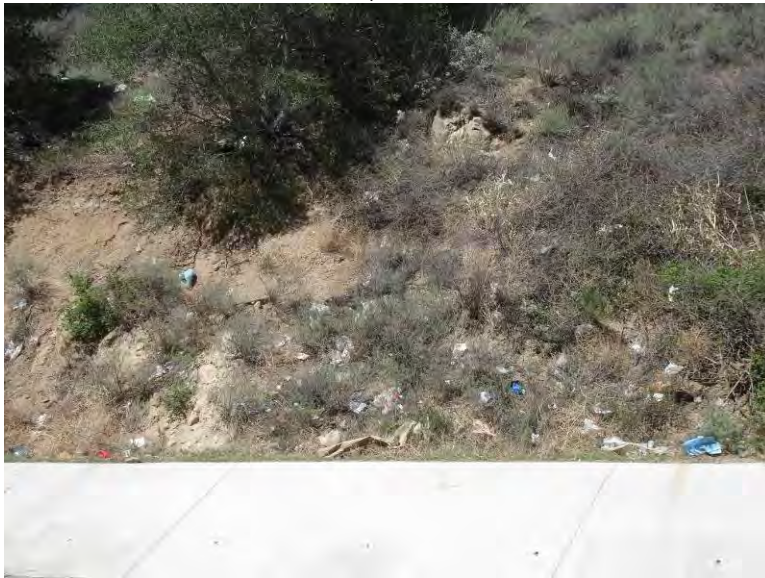


Photo 15: Basin A: March 12, 2014



Photo 16: Basin A Inlet: February 5, 2014



Photo 17: Scraper Access Road Near Basin A: February 5, 2014



Photo 18: Scraper Access Road Near Basin A: February 5, 2014



Photo 19: Scraper Access Road Near Basin A: February 5, 2014



Photo 20: Scraper Access Road Near Basin A: February 5, 2014



Photo 21: Westside Drainage Channel: January 15, 2014



Photo 22: Westside Drainage Channel: January 15, 2014



Photo 23: Westside Drainage Channel: January 15, 2014



Photo 24: Westside Drainage Channel: January 15, 2014



Photo 25: Westside Drainage Channel: January 15, 2014



Photo 26: Westside Drainage Channel: January 15, 2014



Photo 27: Westside Drainage Channel: February 5, 2014



Photo 28: Westside Drainage Channel: February 5, 2014



Photo 29: Westside Drainage Channel: February 5, 2014



Photo 30: Westside Drainage Channel: February 5, 2014



Photo 31: Westside Drainage Channel: February 5, 2014



Photo 32: Westside Drainage Channel: February 19, 2014



Photo 33: Westside Drainage Channel: February 19, 2014



Photo 34: Westside Drainage Channel: February 19, 2014



Photo 35: Westside Drainage Channel: February 19, 2014



Photo 36: Westside Drainage Channel: February 19, 2014



Photo 37: County Sage Mitigation Area: February 5, 2014



Photo 38: County Sage Mitigation Area: February 5, 2014



Photo 39: County Sage Mitigation Area: February 5, 2014



Photo 40: County Sage Mitigation Area: February 5, 2014



Photo 41: County Sage Mitigation Area: February 5, 2014



Photo 42: County Sage Mitigation Area: February 5, 2014



Photo 43: Basin D: February 19, 2014



Photo 44: Basin D: February 19, 2014



Photo 45: Basin D: February 19, 2014



Photo 46: Basin D: February 19, 2014



Photo 47: Material Area: January 15, 2014



Photo 48: Material Area: January 15, 2014



Photo 49: Material Area: January 15, 2014



Photo 50: Material Area: January 15, 2014



Photo 51: Flare 9&10 Burner Parts Replaced: January 15, 2014



Photo 52: Flare 9&10 Burner Parts Replaced: January 15, 2014



Photo 53: Flare 9&10 Burner Parts Replaced: January 15, 2014



Photo 54: Flare 9&10 Burner Parts Replaced: January 15, 2014



Photo 55: Basin D Outlet Channel: January 15, 2014



Photo 56: Basin D Outlet Channel: January 15, 2014



Photo 57: Basin D Outlet Channel: February 5, 2014



Photo 58: Basin D Outlet Channel: February 5, 2014



Photo 59: Basin D Outlet Channel: February 19, 2014



Photo 60: Basin D Outlet Channel: February 19, 2014



Photo 61: Flare 9 and 10 Gas Blower: January 15, 2014



Photo 62: Flare 9 and 10 Inlet Gas Blowers: February 5, 2014



Photo 63: Flare 9 and 10 Inlet Gas Blowers: February 5, 2014

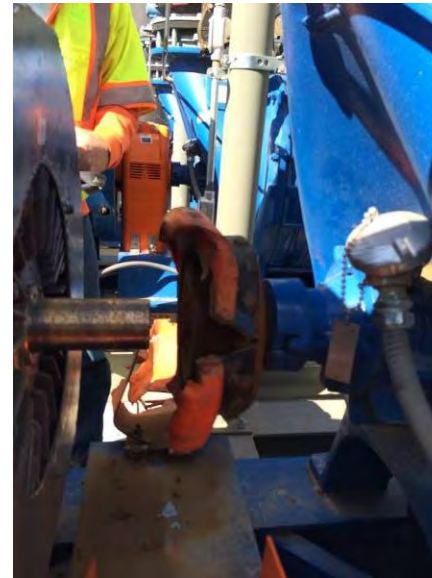


Photo 64: Flare 9 and 10 Inlet Gas Blowers: February 5, 2014



Photo 65: Flare 9 and 10 Inlet Gas Blowers: February 5, 2014



Photo 67: Flare 9 & 10 Emergency Power: March 12, 2014



Photo 66: Flare 9 & 10 Emergency Power: March 12, 2014

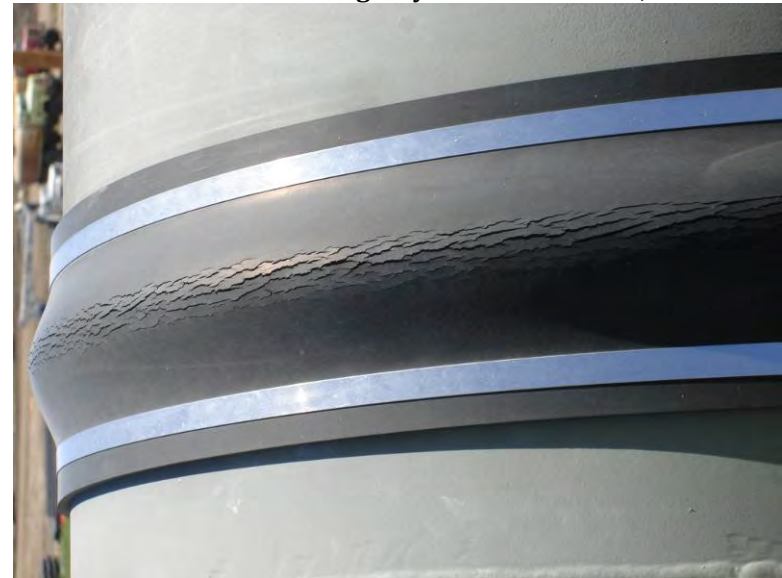


Photo 68: Flare 9 Air Blower Discharge: March 12, 2014



Photo 69: Flare 9 Air Blower Discharge: March 12, 2014



Photo 70: Gas to Energy Facility: January 15, 2014



Photo 71: Gas to Energy Facility: January 15, 2014



Photo 72: Gas to Energy Facility: January 15, 2014



Photo 73: Gas to Energy Facility: January 15, 2014



Photo 74: Gas to Energy Facility: February 5, 2014



Photo 75: Gas to Energy Facility: February 5, 2014



Photo 76: Gas to Energy Facility: February 5, 2014



Photo 77: Gas to Energy Facility: February 5, 2014



Photo 78: Gas to Energy Facility: February 5, 2014



Photo 79: Gas to Energy Facility: February 5, 2014



Photo 80: Gas to Energy Facility: February 5, 2014



Photo 81: Gas to Energy Facility: February 5, 2014



Photo 82: Gas to Energy Facility: February 19, 2014



Photo 83: Gas to Energy Facility: February 19, 2014



Photo 84: Gas to Energy Facility: February 19, 2014



Photo 85: Gas to Energy Facility: February 19, 2014



Photo 86: Gas to Energy Facility: February 19, 2014



Photo 87: Gas to Energy Facility: February 19, 2014



Photo 88: Gas to Energy Facility: February 19, 2014



Photo 89: Gas to Energy Facility: February 19, 2014



Photo 90: Basin B: January 15, 2014



Photo 91: Basin B: January 15, 2014



Photo 92: Basin B: February 5, 2014



Photo 93: Basin B: February 5, 2014



Photo 94: Basin B: February 19, 2014



Photo 95: Basin B: February 19, 2014



Photo 96: Eastside Drainage Channel: January 15, 2014



Photo 97: Terminal Basin: January 15, 2014



Photo 98: Terminal Basin: January 15, 2014



Photo 99: Terminal Basin: January 15, 2014



Photo 100: Terminal Basin Front Exterior Wall: January 15, 2014



Photo 101: Terminal Basin Front Exterior Wall: January 15, 2014



Photo 102: Terminal Basin Front Exterior Wall: January 15, 2014



Photo 103: Terminal Basin Front Exterior Wall: January 15, 2014



Photo 104: Terminal Basin Front Exterior Wall: January 15, 2014



Photo 105: Terminal Basin Broken Access Gate: January 15, 2014



Photo 106: Terminal Basin Broken Access Gate: January 15, 2014



Photo 107: Terminal Basin: March 12, 2014



Photo 108: Terminal Basin: March 12, 2014



Photo 109: City South Soil Stockpile Seep: January 15, 2014



Photo 111: City South Soil Stockpile Seep: January 15, 2014



Photo 110: City South Soil Stockpile Seep: January 15, 2014



Photo 112: Seep Water Near City Soil Stockpile Area: February 5, 2014



Photo 113: Seep Water Near City Soil Stockpile Area: February 5, 2014



Photo 114: Seep Water Near City Soil Stockpile Area: February 5, 2014



Photo 115: Seep Water Near City Soil Stockpile Area: February 5, 2014



Photo 116: Seep Water Near City Soil Stockpile Area: February 19, 2014



Photo 117: Seep Water Near City Soil Stockpile Area: February 19, 2014



Photo 118: Seep Water Near City Soil Stockpile Area: February 19, 2014



Photo 119: Seep Water Near City Soil Stockpile Area: February 19, 2014



Photo 120: Seep Water Near City Soil Stockpile Area: February 19, 2014



Photo 121: County Top Deck: January 15, 2014



Photo 122: County Top Deck: January 15, 2014



Photo 123: County Top Deck: January 15, 2014



Photo 124: County Top Deck: January 15, 2014



Photo 125: County Top Deck: January 15, 2014



Photo 126: County Top Deck: January 15, 2014



Photo 127: County Top Deck: January 15, 2014



Photo 128: County Top Deck: January 15, 2014



Photo 129: County Top Deck: January 15, 2014



Photo 130: County Top Deck: January 15, 2014



Photo 131: County Top Deck: January 15, 2014



Photo 132: County Top Deck: January 15, 2014



Photo 133: County Top Deck: February 5, 2014



Photo 134: County Top Deck: February 5, 2014



Photo 135: County Top Deck: February 5, 2014



Photo 136: County Top Deck: February 5, 2014



Photo 137: County Top Deck: February 5, 2014



Photo 138: County Top Deck: February 5, 2014



Photo 139: County Top Deck: February 5, 2014



Photo 140: County Top Deck: February 5, 2014



Photo 141: County Top Deck: February 5, 2014



Photo 142: County Top Deck: February 5, 2014



Photo 143: County Top Deck Near City Line: February 5, 2014



Photo 144: County Top Deck Near City Line: February 5, 2014



Photo 145: County Top Deck Near City Line: February 5, 2014



Photo 147: County Top Deck Near City Line: February 5, 2014



Photo 146: County Top Deck Near City Line: February 5, 2014



Photo 148: County Top Deck Near City Line: February 5, 2014



Photo 149: County Top Deck: February 19, 2014



Photo 150: County Top Deck: February 19, 2014



Photo 151: County Top Deck: February 19, 2014



Photo 152: County Top Deck: February 19, 2014



Photo 153: County Top Deck: February 19, 2014



Photo 154: County Top Deck: February 19, 2014



Photo 155: County Top Deck: February 19, 2014



Photo 156: County Top Deck: February 19, 2014



Photo 157: County Top Deck: February 19, 2014



Photo 158: County Top Deck: February 19, 2014



Photo 159: County Top Deck: March 12, 2014



Photo 160: County Top Deck: March 12, 2014



Photo 161: County Top Deck: March 12, 2014



Photo 162: County Top Deck: March 12, 2014



Photo 163: County Top Deck: March 12, 2014



Photo 164: County Top Deck: March 12, 2014



Photo 165: County Top Deck: March 12, 2014



Photo 166: County Top Deck: March 12, 2014



Photo 167: County Top Deck: March 12, 2014



Photo 168: County Top Deck: March 12, 2014



Photo 169: County Top Deck: March 12, 2014



Photo 170: County Top Deck: March 12, 2014



Photo 171: County Top Deck Recycling Area: February 19, 2014



Photo 172: County Top Deck Recycling Area: February 19, 2014



Photo 173: City North: January 15, 2014



Photo 174: City North: January 15, 2014



Photo 175: City North: January 15, 2014

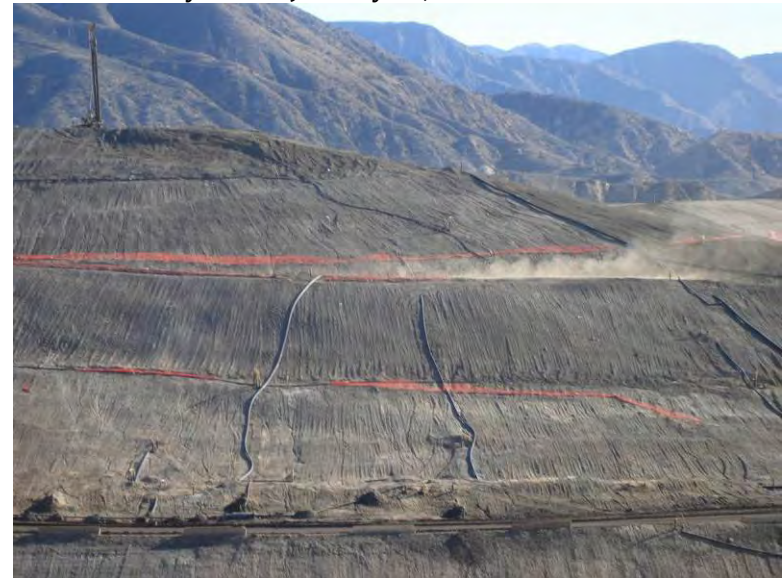


Photo 176: City North Slope: January 15, 2014



Photo 177: City North Slope: January 15, 2014



Photo 178: City North Slope: January 15, 2014



Photo 179: Old City North Fill Area: January 15, 2014



Photo 180: Old City North Fill Area: January 15, 2014



Photo 181: Old City North Fill Area: January 15, 2014



Photo 182: Old City North Fill Area: February 5, 2014



Photo 183: Old City North Fill Area: February 19, 2014



Photo 184: Old City North Fill Area: February 19, 2014



Photo 185: Old City North Fill Area: February 19, 2014



Photo 186: Old City North Fill Area: February 19, 2014



Photo 187: Leachate Treatment Facility Powerline: February 19, 2014



Photo 188: Leachate Treatment Facility Powerline: February 19, 2014



Photo 189: Leachate Treatment Facility Powerline: March 12, 2014



Photo 190: Leachate Treatment Facility Powerline: March 12, 2014



Photo 191: Leachate Treatment Facility: March 12, 2014



Photo 192: Road Realignment Area: March 12, 2014



Photo 193: Road Realignment Area: March 12, 2014



Photo 194: Road Realignment Area: March 12, 2014



Photo 195: Road Realignment Area: March 12, 2014



Photo 196: Road Realignment Area: March 12, 2014



Photo 197: Road Realignment Area: March 12, 2014



Photo 198: Road Realignment Area: March 12, 2014



Photo 199: Road Realignment Area: March 12, 2014



Photo 200: Road Realignment Area: March 12, 2014



Photo 201: Road Realignment Area: March 12, 2014



Photo 202: Road Realignment Area: March 12, 2014



Photo 203: Road Realignment Area: March 12, 2014



Photo 204: Road Realignment Area: March 12, 2014



Photo 205: Road Realignment Area: March 12, 2014



Photo 206: Road Realignment Area: March 12, 2014



Photo 207: City Sage Deck C: February 5, 2014



Photo 208: City Sage Deck C: February 5, 2014



Photo 209: City Sage Deck C: February 5, 2014



Photo 210: City Sage Deck C: February 5, 2014



Photo 211: City Sage Deck C: February 5, 2014



Photo 212: City Sage Deck C: February 5, 2014



Photo 213: City Sage Deck C: February 5, 2014



Photo 214: City Sage Deck C: February 5, 2014



Photo 215: City Sage Deck C: March 12, 2014



Photo 216: City Sage Deck C: March 12, 2014



Photo 217: City Sage Deck C: March 12, 2014



Photo 218: City Sage Deck C: March 12, 2014



Photo 219: City Sage Deck C: March 12, 2014



Photo 220: City Sage Deck C: March 12, 2014



Photo 221: City Sage Deck C: March 12, 2014



Photo 222: City Sage Deck C: March 12, 2014



Photo 223: City Sage Deck C: March 12, 2014



Photo 224: City Sage Deck C: March 12, 2014



Photo 225: City Deck C PM 10 Berm: March 12, 2014



Photo 226: City Deck C PM 10 Berm: March 12, 2014



Photo 227: City Deck C PM 10 Berm: March 12, 2014



Photo 228: City Deck C PM 10 Berm: March 12, 2014



Photo 229: City Deck C PM 10 Berm: March 12, 2014



Photo 230: City Deck B: March 12, 2014



Photo 231: City Deck B: March 12, 2014



Photo 232: City Deck B: March 12, 2014



Photo 233: City Deck B: March 12, 2014



Photo 234: City Deck B: March 12, 2014



Photo 235: City Deck B: March 12, 2014



Photo 236: City Deck B: March 12, 2014



Photo 237: City Deck B: March 12, 2014



Photo 238: Southern Perimeter Gate in Oil Field Unlocked: February 19, 2014



Photo 239: Southern Perimeter Gate in Oil Field Unlocked: March 12, 2014



Photo 240: Terminal Basin Broken Access Gate: January 15, 2014



Photo 241: Sierra Highway Near I-14 Overpass: January 15, 2014



Photo 243: Sierra Highway Near I-14 Overpass: January 15, 2014



Photo 242: Sierra Highway Near I-14 Overpass: January 15, 2014



Photo 244: Sierra Highway Near I-14 Overpass: February 19, 2014



Photo 245: Sierra Highway Near I-14 Overpass: February 19, 2014



Photo 246: Sierra Highway Near I-14 Overpass: February 19, 2014



Photo 247: Sierra Highway Near I-14 Overpass: March 12, 2014



Photo 248: Sierra Highway Near I-14 Overpass: March 12, 2014



Photo 249: Sierra Highway Near I-14 Overpass: March 12, 2014



Photo 250: Sierra Highway Near I-14 Overpass: March 12, 2014



Photo 251: Site Working Area: February 5, 2014



Photo 252: Site Working Area: February 5, 2014



Photo 253: Site Working Area: February 5, 2014



Photo 254: Site Working Area: February 5, 2014



Photo 255: Site Working Area: February 19, 2014



Photo 256: Site Working Area: February 19, 2014



Photo 257: Site Working Area: February 19, 2014



Photo 258: Site Working Area: February 19, 2014



Photo 259: Site Working Area: February 19, 2014



Photo 260: Site Working Area: February 19, 2014



Photo 261: Site Working Area: February 19, 2014



Photo 262: Site Working Area: February 19, 2014



Photo 263: Site Working Area: March 12, 2014



Photo 264: Site Working Area: March 12, 2014



Photo 265: Site Working Area: March 12, 2014



Photo 266: Site Working Area: March 12, 2014



Photo 267: Site Working Area: March 12, 2014



Photo 268: Site: February 19, 2014



Photo 269: Site: February 19, 2014



Photo 270: Site: February 19, 2014



Photo 271: Site: February 19, 2014



Photo 272: Site: February 19, 2014



Photo 273: Site: February 19, 2014



Photo 274: Site: February 19, 2014



Photo 275: Site: February 19, 2014



Photo 276: Site: February 19, 2014



Photo 277: Site: February 19, 2014



Photo 278: Site: February 19, 2014



Photo 279: Site: March 12, 2014



Photo 280: Site: March 12, 2014



Photo 281: Site: March 12, 2014



Photo 282: Site: March 12, 2014



Photo 283: Site: March 12, 2014



Photo 284: Site: March 12, 2014



Photo 285: Site: March 12, 2014

Appendix III

Quarterly Site Visits: Site Visit Attendees by Date of Site Visit/ Mitigation Monitoring Site Reports

UltraSystems Staff; Field of Expertise:

James Aidukas; Project Manager, Permitting and Operations/ Engineer

**Mike Lindsay; Air Quality, Noise, Vehicle Emissions, Environmental Specialist/
Engineer**

Susan Foster; Hazardous Waste/ Risk of Upset

SES Staff; Field of Expertise:

Tarik Hadj-Hamou; Geology

January Site Visit

January 15, 2014: James Aidukas (UltraSystems), Mike Lindsay (UltraSystems), Tarik Hadj-Hamou



**SUNSHINE CANYON LANDFILL
MITIGATION MONITORING SITE REPORT**

Monitor: James Aidukas	Page: 1 of 2
Discipline: Project Manager	Date: January 15, 2014
Site Conditions: Warm and windy - 20-25 mph	
SITE LOG	
<p>Republic Site Manager - Dave Hauser Met with John Nelson and Clark Ajwani (LACDPW), Taik Hadj-Hamou and Mike Lindsay (UEI). Signed in and arranged to meet with Patti Costa after the monitoring. Got a brief update on site gas recovery from Achaya Kelapanda and introduced Mike Lindsay and Tarik Hadj Hamou to Larry Israel (SCAQMD) who was with Mr. Kelapanda. We proceeded to monitor the following areas:</p> <ul style="list-style-type: none"> • Flare 3 and Flare 1 - Larry Israel asked if he could join us in the DPW 4-wheel drive truck to these sites. Flare 3 was operating at approximately 85% capacity and at 1702° F. There was no vibration or cycling as noted on prior visits. There was a slight localized odor noted on the north side of the flare. • Flare 1 was operating at approximate 95% capacity and at 1693° F. The flare operations appeared to be normal with no unusual conditions observed. We returned Mr. Israel to his car and continued the site monitoring. • The site was not taking waste at 9:00 due to high wind conditions. At approximately 10:30 the site started to receive waste. Areas of the city north slope benches were noted to have blowing dust during wind gusts. • Basin A was observed and ready for handling rain flow. The north hillside and the basin had wind-blown litter. • The westside drainage channel had the bottom cracking and uplifting worsen. The channel sidewalls in the area where the two toyon trees are have worsened with horizontal cracking noted on the channel's east wall and the spalling adjacent to the trees increasing. • The material storage area was noted to be well kept with no vermin noted. Replaced damaged parts from Flare 9 or 10 were observed. • Basin D north drainage had the leading edge of the HDPE liner material uplifting. The outlet of the channel was plugged with tumbleweeds and litter. • One blower on the blower skid for Flares 9 and 10 was having the motor replaced. The motor drive shaft was noted being bent on prior site visits. • The gas-to-energy facility was having foundations being poured for additional gas treatment skids • Basin B was observed and ready for handling rain flow. The east native slope was noted having wind-blown litter on it. • The old City North fill area has had soil stockpile removed, wells updated and lowered and what appears to be final grade. • The terminal basin was clean, dry, and ready for rain flow. The font along San Fernando has dumped trash and debris all along the exterior wall but inside the frontage block wall. • The access gate to the basin outlet area was torn out of the slump block support and lying on the ground. The exterior basin wall along the access has horizontal cracks that are worsening. • Sierra Highway near the I-14 overpass was clean and no litter or illegal dumping was observed. 	

(January 15, 2014, page 2 of 2)

Flare Operating Conditions:

- Flare 1 - 1693° F, 4018 SCFM, -52" WC vacuum
- Flare 3 - 1702° F, 3628 SCFM
- Flare 8 - offline
- Flare 9 - 1665° F, 2577 SCFM
- Flare 10 - 1654° F, 2502 SCFM
- Temporary Flare - decommissioned

FURTHER REVIEW NEEDED

1. Remove litter from hillsides at Basin A and Basin B
2. Schedule removal of trees from the westside drainage channel and repair of damaged concrete.
3. Remove litter and dumped trash from the terminal basin exterior wall along San Fernando Road. Schedule repair of concrete cracks on the exterior wall.
4. Clean drainage D channel outlet.

COMMENTS

Signed: 

PAGE 1 OF 5



**SUNSHINE CANYON LANDFILL
MITIGATION MONITORING
SITE REPORT**

Monitor: Tarik Hadj-Hamou, Ph.D., P.E.	PAGE 1 OF 5
Discipline: Civil - Geotechnical	Date: January 15, 2014
Site Conditions: Sunny, hot and very windy	
SITE LOG	
9:00 arrive at Sunshine Canyon Landfill meet with Jim Aidukas and Mike Lindsay of UltraSystems. to prepare visit	
9:30 meet with John Nelson and Mark of LADPW, Jim Aidukas and Mike Lindsay of UltraSystems and Laurance Israel of AQMD	
9:45 - 1:45 site tour	
Seep on slope, stability berm for Cell CC3, drainage system, flare stations, waste face, slopes, roads, location of future toe berm	
Seep on Slope (Photo 1) <ul style="list-style-type: none"> • a large diameter HDPE pipe was unearthed and a seep observed. Water is ponding at toe of vertical few feet high slope with. This should be addressed as it poses a stability risk • a smaller seep(?) was observed to the east of the ponding water on the slope. Only impact on cover is an erosion gully 	
Cell CC3 Phase II <ul style="list-style-type: none"> • Landfilling is ongoing in cell, covering up portion of the western end of the berm. • Operation layers has been placed on floor and up the sides of cell CC3a part I – wind did not uplift the geotextile protective the liner system 	
Drainage system <ul style="list-style-type: none"> • Sedimentation basins <ul style="list-style-type: none"> ○ Basins A and D are clean ○ Terminal basin cleaned up – K-rails installed in basin to catch large debris • Channels <ul style="list-style-type: none"> ○ We noted that along a portion of the channel between Basin A and Basin D, the floor of basin is uplifted in the middle with large cracks and weeds growing (Photo 3). This indicates presence of moisture interacting with possibly swelling soils. ○ At the connection between the V-ditch (Photo 4) feeding the channel there is a gap between shotcrete and soil which is a conduit for water to infiltrate beneath the channel shotcrete into the subbase soil ○ Cracks mentioned in previous visits on west side (native soil side) of channel are getting worse with concrete spalling and pieces falling off (Photo 5). On the east side (landfill side) the tree is growing bigger. The roots could eventually bust the concrete. ○ In a large storm the conditions noted above could worsen leading to significant damage to the channel. 	

PAGE 2 OF 5



Monitor: Tarik Hadj-Hamou, Ph.D., P.E.	PAGE 2 OF 5
Discipline: Civil - Geotechnical	Date: January 15, 2014
Site Conditions: Sunny, hot and very windy	
SITE LOG	
Drainage system <ul style="list-style-type: none"> Channels <ul style="list-style-type: none"> Segment of channel leaving Basin D towards Basin B has been relined with HDPE. The beginning of liner may be need to reinforced to avoid water flowing under as the row of sand bag may not be enough. 	
Waste face <ul style="list-style-type: none"> Republic was operating one waste face under wind restriction 	
Flare stations <ul style="list-style-type: none"> Flare 10 installed and running Construction of the gas to energy facility is on-going 	
Slopes <ul style="list-style-type: none"> No issue or concerns noted during site tour except for issues associated with seeps noted previously 	
Roads <ul style="list-style-type: none"> No issue or concerns noted during site tour 	
Location of future toe berm <ul style="list-style-type: none"> Team met at location of future toe berm based on A-Mehr drawings. No comment until construction begins 	
FURTHER REVIEW NEEDED	
COMMENTS	
Cracks in concrete channel should be addressed	
Signed:	

PAGE 3 OF 5



Photo 1: Seep and ponding water at toe of vertical cut under slope



Photo 2: Erosion gully on slope



Photo 3: Cracked and uplifted bottom of concrete channel between Basin A and Basin D



Photo 4: V ditch feeding the channel – Note gap between shotcrete and soil at connection V-ditch channel

PAGE 5 OF 5



Photo 5: V Spalling and falling concrete on channel between Basin A and Basin D



**SUNSHINE CANYON LANDFILL
MITIGATION MONITORING
SITE REPORT**

Monitor: Mike Lindsay	Page 1 of 3
Discipline: Environmental Engineer	Date: 01-15-14
Site Conditions: Clear, sunny, 62-84°F, Windy: 15-25 mph	
SITE LOG	
1. Met with Clark Ajwani, John Nelson (LA DPW), Jim Aidukas, Tarik Hadj-Hamou (UltraSystems) to discuss site visit objectives.	
2. Checked into office and with Patricia Costa (Republic) Note that landfill entrance gate was found closed at 9 AM due to high winds; reopened at 10:15 AM.	
3. Observed working face with trash fence effective in high winds.	
4. Measured buttress area elevations, area and slope using a Trimble 2008 GeoXH GPS device (#0.1m accuracy). Average elevation approx. 1540.2 feet.	
5. Observed Sediment Basin A to be clear of debris and sediment.	
6. Observed blown trash along north-western slope of Sediment Basin A.	
7. Observed Westside Drainage to have upflitting concrete floor and cracked walls. Trees are undermining ditch.	
8. Observed BAS pipe storage yard to be in good order.	
9. Observed Northside Drainage to have wind-blown brush blocking drain pipe.	
10. Flare 9 is operating at 2757 scfm, 1676 °F, gas sample measured at 39% vol. CH ₄ , 31.8% vol. O ₂ , 64 ppm H ₂ S, 337 ppm CO. Supply gas at 117 °F.	
11. Flare 10 is operating at 2625 scfm, 1637 °F. Blowers 2 and 4 are running. Blower 3 has a broken coupler.	
12. Sediment Basin B is clear of sediment, but has a large pipe section (12' x 3') that may have blown in.	
FURTHER REVIEW NEEDED	
1. Remove trash from north-western slope of Sed. Basin A.	
2. Repair Westside Drainage concrete floor and walls; remove trees undermining ditch.	
3. Clear brush from Northside Drainage.	
4. Remove pipe section (12' x 3') from Sed. Basin B.	
Project Number: 5800	
Signed: <i>Mike Lindsay</i>	



**SUNSHINE CANYON LANDFILL
MITIGATION MONITORING
SITE REPORT**

Monitor: Mike Lindsay	Page 2 of 3
Discipline: Environmental Engineer	Date: 01-15-14
Site Conditions: Clear, sunny, 62-84°F, Windy: 15-25 mph	
SITE LOG	
<p>13. Terminal/Sediment Basin has cracks in exterior wall above access road by entrance. Basin is clear of sediment.</p> <p>14. Observed San Fernando Road to be clear of debris.</p> <p>15. Met with Tim Robinson, Patti Costa, Becky Van Sickle and Achayn Rebanda (Republic), and discussed the following:</p> <ul style="list-style-type: none"> a. Potted plant project is ongoing (City Deck C). b. Details to be included in the quarterly vegetation report. c. The proposed seed mix is still under review by David. d. Native v. Non-native issue issue for interim cover still being considered. e. Gas-to-Energy Plant pushed back until June or July, per Tim. f. Power lines going around landfill still under review by PUC for SCE. g. SCE raised cross-roads 80 feet for additional clearance. h. Litter at sediment basins cleaned only as high as poles can reach. i. Westside Drainage repairs will be performed when Phase I Road is constructed. j. Regarding Flare 1 / Flare 3 odors 25 feet from Flares due to dyndraft: emission testing and maintenance is required and being accomplished. k. Standing water pond by cut pipe is seep water, and will be pumped out soon, per Tim. l. Dewatering horizontal pipes will be drilled to drain seeps. m. SCE transmission line pads are being cut now in anticipation of new line. 	
FURTHER REVIEW NEEDED	
<p>5. Repair concrete cracks in exterior wall of Terminal/Sed. Basin.</p>	
Project Number: 5800	Signed: <i>Mike Lindsay</i>

Monitor: Mike Lindsay	Page 3 of 3
Discipline: Environmental Engineer	Date: 01-15-14
Site Conditions: Clear, sunny, 62-84°F, Windy: 15-25 mph	
SITE LOG	
<p>n. Chatsworth wetland mitigation is being held up by City attorneys and regulatory agencies.</p> <p>o. Final plans for Westside Drainage Plain ("2017") due March 28 to Water Board. Perhaps a concurrent submittal to County. CC3B ("2015") is dependent on WSD Plans.</p> <p>p. Access Road construction plans final due this Monday; bid in February; construction in March.</p> <p>q. Gates are broken at Terminal Sediment Basin; Tim is having them repaired.</p>	
FURTHER REVIEW NEEDED	
Project Number: 5800	
Signed: Mike Lindsay	

February Site Visits

February 5, 2014: James Aidukas (UltraSystems), Joe Thompson (UltraSystems), Mike Lindsay (UltraSystems)

February 19, 2014: James Aidukas (UltraSystems), Susan Foster (UltraSystems), Mike Lindsay (UltraSystems)



**SUNSHINE CANYON LANDFILL
MITIGATION MONITORING SITE REPORT**

Monitor: James Aidukas	Page: 1 of 1
Discipline: Project Manager	Date: February 5, 2014
Site Conditions: ~60° F, Slight wind	
SITE LOG	
<p>Republic Site Manager - Dave Hauser Met with John Nelson (LACDPW) and Mike Lindsay (UEI). Signed in and talked with Patti Costa and Tim Johnson (Republic Services) and arranged to meet after the monitoring. We proceeded to monitor the site:</p> <ul style="list-style-type: none"> • Observed Basin A, which had standing water from the last rain storm. The standpipes don't fully drain the basin. Blown litter was seen on the back hillsides and in the basin water. • The westside inlet to Basin A had windblown tumble weed blocking the inlet culvert pipe. • The scraper access road south of Basin A was widened and appears to be completed. • The County top deck was observed and moving of soils is continuing to be done which appears to be for recovering stockpiled soils and in preparation of future fill cells. A current sequencing plan should be requested. • The westside drainage channel had no change in the need to remove trees undermining the channel sidewalls and the repair to the channel bottom and sidewalls where needed. • The County sage mitigation area had no revegetation activity occurring. • The Basin D outlet channel had a portion of the culvert HDPE liner uplifted from the prior rain storm. The outlet pipe was also blocked by windblown tumbleweeds. • Observed the DTE landfill gas-to-energy facility. Met with George Wentz (HR Green Engineers) and Scott Gauthier (Landfill Energy Systems). They indicated commissioning of the facility should start in about three months. • Basin B was observed to be clean and dry. The back native hillsides had some windblown litter. • Observed uncovered trash to be mixed with cover soil near the City/County line on the top deck. This condition was reported to Republic. Republic staff observed this condition in the field with us. • Observed seep water near the City soils stockpile. The ponding of water has been increasing since the seep and drain pipe was uncovered. • The City North old fill has been re-graded and it appeared to be at final grade. • The City sage mitigation Deck C was replanted and salt and quailbush was continuing to be the predominant plant. <p>Flare Operating Conditions:</p> <ul style="list-style-type: none"> ○ Flare 9 - 1661° F, 3900 SCFM, -56" vacuum ○ Flare 10 - 1694° F, 3770 SCFM, -56" vacuum 	
FURTHER REVIEW NEEDED	
COMMENTS	
Met with Republic staff after the monitoring.	
Signed: 	



UltraSystems
environmental • management • planning

SUNSHINE CANYON LANDFILL
MITIGATION MONITORING
SITE REPORT

Monitor: Mike Lindsay	Page 1 of 3
Discipline: Environmental Engineer	Date: 02-05-14
Site Conditions: Sunny, clear, 54-61°F, 5-15 mph	
SITE LOG	
<ol style="list-style-type: none"> 1. Met with John Nelson (LACDPW) and Jim Aiolikas (UltraSystems). Checked in with Tim Johnson and Patric Costa (Republic) at office. 2. Observed Sediment Basin A to be clear of sediment; some standing water around drains. 3. Observed wind-blown trash along NW slope of Sed. Basin A. 4. Observed Westside drainage uplitting along concrete floor, cracked and spalling concrete walls, and tree growing over drain and undermining concrete walls. 5. Observed County Sage Mitigation Slopes to be mostly bare. 6. Observed BAF Pipe Storage Yard to be in good order. 7. Observed northwest perimeter drainage with vegetative debris blocking drain culvert. 8. Flare 9 is operating at 3893 scfm, 1694°F. Gas sample measured at 39% Vol. CH₄, 2.6% Vol. O₂, 64 ppm H₂S, 350 ppm CO; supply gas at 131°F. 9. Flare 10 is operating at 3751 scfm, 1677°F. Blowers 2 and 4 are operating. Measured a peak CH₄ reading of 1500 ppm just inside of Flare 10 by inserting a 4" probe into south-facing louver. This was in response to smelling strong odor. 10. Met with engineers at Green (Gas-to-Energy Plant); 2 to 3 months until plant commissioning. 11. Observed Sediment Basin B to be clear of sediment. 	
FURTHER REVIEW NEEDED	
<ol style="list-style-type: none"> 1. Remove wind-blown trash from NW slope of SB-A using a manlift truck for worker safety. 2. Remove trees and repair concrete along Westside Drainage. 3. Plant County Sage Mitigation Slopes with sage community mix. 4. Remove vegetative debris from northwest perimeter drainage. 	
Project Number: 5800	Signed: <i>Mike Lindsay</i>



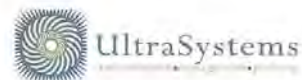
**SUNSHINE CANYON LANDFILL
MITIGATION MONITORING
SITE REPORT**

Monitor: Mike Lindsay	Page 2 of 3
Discipline: Environmental Engineer	Date: 02-05-14
Site Conditions: Sunny, clear, 54-61°F, 5-15 mph	
SITE LOG	
<p>12. Smelled odors of rotting trash coming from area west of Sediment Basin B. Found trash strewn over graded area near Well 691 (approx 8 acres).</p> <p>13. Well 691 is leaking landfill gas at connections.</p> <p>14. Observed seep pipe and standing water pond along south access road.</p> <p>15. Observed City Top Deck C sage mitigation area to be growing well. Salt and Quail Bush continue to thrive.</p> <p>16. Met with Patti Costa, Beck VanSickle and Fred Jones, and Achya Delapanta (Republic):</p> <ul style="list-style-type: none"> a. Informed Republic that exposed trash is mixed with soil west of SB-B. Per Patti's request, we took them to the location for a visual inspection. b. Flare 9 air blower was cycling and vibrating (Flare 10 air blower was running smoothly). Achya informed us that that F10 is flow-controlled, F9 is demand-controlled and manages all remaining gas loads. c. Amias (third-party consultant) tests flares 9 and 10 every month. Flares 4, 3 and 8 are tested every quarter. d. Standard 1150.1: 500ppm sustained. e. Flares require 2.5 Feet/min flow minimum to avoid downdrafts. f. Sewerline project will last 5 weeks. 	
FURTHER REVIEW NEEDED	
<p>5. Cover exposed trash in area west of SB-B.</p> <p>6. Repair gas leaks at Well 691.</p> <p>7. Drain seep pond along south access road.</p>	
Project Number: 5800	Signed: <i>Mike Lindsay</i>




**SUNSHINE CANYON LANDFILL
MITIGATION MONITORING
SITE REPORT**

Monitor: Mike Lindsay	Page <u>3</u> of <u>3</u>
Discipline: Environmental Engineer	Date: <u>02-05-14</u>
Site Conditions: <u>Sunny, clear, 54-61°F, 5-15 mph</u>	
SITE LOG	
<p>g. During summer months, land fill can use all treated water; 140,000 gal./day total Seap = 120K gal.; Condensate = 5K gal.; leachate = 7K gal.</p> <p>h. During the winter months, the sewer will take excess treated water, which is currently being trucked offsite.</p> <p>i. Per Tim, airspace is expected to last until mid-2015.</p> <p>j. Starting new access road project in mid-March.</p> <p>k. Provided Patti with documentation regarding sage mitigation, per FEIR.</p>	
FURTHER REVIEW NEEDED	
<p>Project Number: 5800</p> <p>Signed: <u>Mike Lindsay</u></p>	



**SUNSHINE CANYON LANDFILL
MITIGATION MONITORING SITE REPORT**

Monitor: James Aidukas	Page: 1 of 1
Discipline: Project Manager	Date: February 19, 2014
Site Conditions: 70-80° F, Strong wind gusts	
SITE LOG	
<p>Republic Site Manager – Dave Hauser Met with John Nelson (LACDPW) and Mike Lindsay and Susan Foster(UEI). Signed in and briefly met with Achaya Kelapanda and Becky Van Sickle (Republic Services). Susan Foster stayed with Becky Van Sickle to review documents and monitor site areas related to hydrology, hazardous waste/risk of upset. John Nelson, Mike Lindsay, and I proceeded to monitor the site:</p> <ul style="list-style-type: none"> • Observed Basin A, which still had standing water since the February 5th monitoring. Blown litter was on the north native hillsides. • The westside drainage channel had one tree removed that was affecting the sidewall. Repairs to the concrete walls and bottom of the channel have not been scheduled. • Basin D was clean, dry, and sealed with soil sealant. • The high wind caused some localized blowing dust on the County top deck and on the City north slopes. • A leaking steel gas well was observed on the County top deck near the City jurisdictional line. • The Basin D outlet channel uplifting of the HDPE line and the blockage of the outlet with tumbleweed observed on February 5th had not been maintained. • The gas-to-energy facility was observed and progress continues to be made with no change in the completion date. • Basin B was clean and dry. The native hillsides had wind-blown litter on them. • The old City fill area had wind-blown litter on the adjacent native hillsides. A picker was there attending to pick up the litter. • There was no change in the seep water pond near the City soil stockpile. • There were a number of tree branches hanging over the leachate treatment facility power lines. • Sierra Highway near the I-14 overpass was clean except for three isolated areas of illegal dumping; a door and two large trash bags full of waste. <p>Flare Operating Conditions:</p> <ul style="list-style-type: none"> ○ Flare 1 - 1696° F, 4024 SCFM, ○ Flare 9 - 1653 ° F, 3961 SCFM, -56" vacuum ○ Flare 10 - 1664° F, 4088 SCFM, -56" vacuum 	
FURTHER REVIEW NEEDED	
COMMENTS	
<p align="right">Signed: </p>	



**SUNSHINE CANYON LANDFILL
MITIGATION MONITORING
SITE REPORT**

Monitor: Mike Lindsay	Page <u>1</u> of <u>2</u>
Discipline: Environmental Engineer	Date: <u>02-19-14</u>
Site Conditions: <u>Sunny, clear, 57-81 °F, 5-25 mph, 72%RH</u>	
SITE LOG	
<ol style="list-style-type: none"> 1. Met with John Nelson (LACDPW), Jim Aidukous, and Susan Foster (Ultra Systems). Checked into office, and with Acharya Kelapanda and Becky Van Sickle (Republic). 2. Observed Sediment Basin A to be clear of sediment. 3. Observed wind-blown trash along north slope of Sediment Basin A. 4. Observed County Top Deck from western slope above access road. Haul road to working face was being watered regularly. 5. Observed Westside Drainage uplifting along concrete floor, cracked and spalling concrete walls. A large tree was cut down, exposing concrete cracks from roots. 6. Measured County Top Deck elevations using a Trimble 2008 GeoXH CRS device (± 0.1 m accuracy). 7. Observed City working face to be in good order. 8. Observed City Deck C sage mitigation area to be growing well. Salt and Quail bush are prominent. 9. Observed San Fernando Road, with dumping along roadside (household, bags and trash). 10. Met with Patti Costa, Becky Van Sickle, Tim Johnson (Republic). <ol style="list-style-type: none"> a. Well #41 was leaking landfill gas. Acharya Kelapanda went out today to seal it. b. New sewer line will be a shallow trench with slurry back fill. 	
FURTHER REVIEW NEEDED	
<ol style="list-style-type: none"> 1. Remove wind-blown trash from north slope of Sediment Basin A using a cherry picker truck for worker safety. 2. Repair concrete along Westside Drainage. 	
Project Number: 5800	Signed: <u>Mike Lindsay</u>



**SUNSHINE CANYON LANDFILL
MITIGATION MONITORING
SITE REPORT**

Monitor: Mike Lindsay	Page 2 of 2
Discipline: Environmental Engineer	Date: 02-19-14
Site Conditions: Sunny, clear, 57-81 °F, 5-25 mph, 72% RH	
SITE LOG	
<p>c. San Fernando Road is overall clean, but with some illegal dumping.</p> <p>d. Wind-blown dust is persistent today due to high winds. Operations is aware, and applying extra water.</p> <p>e. Flare 3 will have a new excess road alignment, tied into Westside Drainage plans.</p> <p>f. Flare 8 cannot be decommissioned until Gas-to-Energy plant is online; then Flare 8 hillside will be removed for new Flare 11.</p> <p>g. Plastic Film cover is being prepared for daily cover.</p> <p>h. Hydroseeding project is delayed due to material shortage.</p> <p>i. Tree removal at lower leachate facility beginning Monday.</p> <p>j. Gate unlocked at oil field; locks keep getting cut.</p> <p>k. Secondary Access Road will be blocked to remove ruts so passenger vehicles can egress in an emergency if main entrance is blocked.</p> <p>l. Per Patric Costa, the AQMD came out again to test Flare emissions; the test results were all in compliance.</p>	
FURTHER REVIEW NEEDED	
<p>Project Number: 5800</p> <p>Signed: <i>Mike Lindsay</i></p>	



UltraSystems
environmental management planning

**SUNSHINE CANYON LANDFILL
MITIGATION MONITORING SITE REPORT**

Monitor: Susan Foster	Page: 1 of 2
Discipline: Hydrology, Haz. Waste, Risk of Upset	Date: February 19, 2014
Site Conditions: Clear, warm, and windy	
SITE LOG	
<p>9:45 AM: Met with John Nelson, James Aidukas, and Mike Lindsay at the landfill. Becky Van Sickle (Environmental Compliance) and Tyson assisted me in locating documents for verification of compliance with City and County Hydrology, Haz. Waste, Risk of Upset conditions. I reviewed safety, training (including sign-in sheets), and procedural documents, including the following from January – December 2013 to early 2014:</p> <ul style="list-style-type: none"> Personal Protective Equipment (PPE is assigned to each employee) Lockout/Tagout Procedures and Energy Control Backing Hazardous Material Transportation Training Accident Prevention Signs and Tags Heat Stress Fire Extinguisher Training Emergency Response Hearing Conservation Spill Prevention Pollution Control Stormwater Pollution Prevention Confined Space Requirements Adverse Weather Drug and Alcohol Free Workplace Procedures Bloodborne Pathogens Rollovers Asbestos Safety and Respiratory Protection Slips, Trips, and Falls Conduct Hazardous Assessment Industrial Truck Training Radiation Awareness Hazardous Communication (Physical and Health Hazards) <p>Review of these documents indicated that training is occurring regularly and appropriate records are being kept with employee signatures indicating their presence at training. I also reviewed the 2013 Facility Inspection Log.</p> <p>Becky Van Sickle and I drove around the landfill to observe the hazardous waste storage area, access gates, hazardous waste load checking, and general safety conditions. Tree branches were observed to be hanging on electrical lines presenting a potential fire hazard. A gate at the oilfield was observed to be unlocked and partially open. An oilfield worker stopped by while I was at the gate, and mentioned that a DWP worker was suspected of repeatedly breaking the lock off the gate in order to obtain access for work. Upon returning to the office, a meeting was held with Patti Costa, Tim Johnson, Becky Van Sickle, John Nelson, James Aidukas, Mike Lindsay, and myself. Ms. Costa noted that they are aware of the tree branch issue, and the tree branches would be removed Monday, February 24. After the meeting's conclusion, Tim Johnson showed me OSHA documents related to employee injuries/accidents. He noted that employee-specific records are kept offsite in a Santa Fe Springs corporate office.</p>	

FURTHER REVIEW NEEDED	
<p>All water trucks need to be equipped with fire hoses. Several water trucks were observed not to be equipped with a hose.</p> <p>The oilfield gate needs to be secured.</p> <p>In March, the electrical lines/tree area needs to be checked to confirm that the tree branches have been cleared from possibly impacting the electrical lines.</p>	
COMMENTS	
Project Number: 5800	Signed: <i>Luan R. Foster</i> 2-19-14

March Site Visit

March 12, 2014: James Aidukas (UltraSystems), Mike Lindsay (UltraSystems)



**SUNSHINE CANYON LANDFILL
MITIGATION MONITORING SITE REPORT**

Monitor: James Aidukas	Page: 1 of 1
Discipline: Project Manager	Date: March 12, 2014
Site Conditions: Clear and sunny, wind gusts ~30 MPH	
SITE LOG	
<p>Republic Site Manager - Dave Hauser Met with John Nelson and Ann Gove (LACDPW) and Mike Lindsay (UltraSystems). Signed in and briefly met with Achaya Kelapanda. We then proceeded to monitor the site:</p> <ul style="list-style-type: none"> • Observed that the trees at the leachate treatment facility had been trimmed to clear the power lines. There was one stray limb that needed to be trimmed. • Observed the tree and vegetation removal along the landfill entrance road for the access road realignment. Numerous oak trees were removed along with some coastal sage vegetation. • The southern oil field perimeter gate was observed to be unlocked and standing open. • Sierra Highway at the I-14 overpass was clean with no litter or illegal dumping. There was a box and tarp dumped further north on Sierra Highway. • The City Deck C sage mitigation area was observed and the Salt and Quail Bush was growing and was approximately 70-80% of the surviving plants. Sage and other plants had spotty success. • Dead oak trees were observed to be removed and lying on the Deck C PM₁₀ berm. • The supports on the Flare 1 skid piping to the blowers were observed to not have support holdown brackets. • The Deck B sage vegetation was observed to be doing well. • Basin A had no standing water. The back native hillsides had litter in the vegetation. • Flares 9 and 10 had emergency power generators to allow for replacement of some SCE power poles. • The Flare 9 air blower piping has a break in the rubber expansion connector and was leaking air. We made Achaya Kelapanda aware of this condition. <p>Flare Operating Conditions:</p> <ul style="list-style-type: none"> ○ Flare 1 - 1696° F, 4049 SCFM, 22% CH₄, 7.5% O₂ ○ Flare 3 - 1700° F, 3585 SCFM, 44% CH₄, 4.8% O₂ ○ Flare 9 - 1667° F, 4133 SCFM ○ Flare 10 - 1645° F, 2698 SCFM, 39% CH₄, 6.2% O₂ 	
FURTHER REVIEW NEEDED	
<ul style="list-style-type: none"> • Oilfield perimeter gate unlocked • Flare 9 air blower expansion joint air leak 	
COMMENTS	
<p>Confirm with Republic staff that the trees, oaks and other species, were counted before they were removed for the road realignment. Also, that a nesting bird survey was performed and mitigation provided if required. Inquire if mitigation trees were already provided for the road realignment.</p>	
Signed:	



**SUNSHINE CANYON LANDFILL
MITIGATION MONITORING
SITE REPORT**

Monitor: Mike Lindsay	Page <u>1</u> of <u>2</u>
Discipline: Environmental Engineer	Date: <u>03-12-14 Wed.</u>
Site Conditions: <u>Clear, sunny, 57-80°F, Windy 10-30 mph</u>	
SITE LOG	
<ol style="list-style-type: none"> 1. Observed tree limbs clear of power lines at lower leachate plants. 2. Met John Nelson, Anna Gove (LACDPW), Jim Aidukas (UltraSystems). Checked into office and Acharya Helipanda (Republic). 3. Observed tree cutting and removal along landfill entrance road for new access road construction. 4. Found oak tree metal tags nailed to cut-down tree trunks (tag numbers 2973 and 2974). 5. Found freshly-made raptor bird nest in hollow of cut-down oak tree (collected nest in sample bag). No feathers, eggs or scat was present. 6. Observed oil field gate unlocked. 7. Observed San Fernando Road and Sierra Highway to be clear of trash, except one large box dumped on Sierra Highway shoulder. 8. Observed City Deck C sage mitigation area to be growing well. Salt and Quail bush are dominant. 9. Flare 1 is operating at 4054 SCFM, 1696 °F. gas sample measured at 22% Vol. CH₄, 7.5% Vol. O₂, 41 ppm H₂S, 21 ppm CO; supply gas at 126 °F. 10. Flare 3 is operating at 44% Vol. CH₄, 4.8% Vol. O₂; 48 ppm H₂S, over 500 ppm CO; 3591 SCFM, 1701 °F. 11. Flare 9 is operating at 4133 SCFM, 1667 °F. 	
FURTHER REVIEW NEEDED	
<ol style="list-style-type: none"> 1. Lock oil field gate. 2. Remove dumped box on Sierra Highway. 	
Project Number: 5800	Signed: <u>Mike Lindsay</u>



**SUNSHINE CANYON LANDFILL
MITIGATION MONITORING
SITE REPORT**

Monitor: Mike Lindsay	Page 2 of 2
Discipline: Environmental Engineer	Date: 03-12-14 Wed.
Site Conditions: Clear, sunny, 57 - 80 °F, Windy 10-30 mph	
SITE LOG	
12. Flare 10 is operating at 2691 SCFM, 1644 °F; gas sample measured at 39 % Vol. CH ₄ , 6.2 % Vol. O ₂ , 67 ppm H ₂ S, over 500 ppm CO; supply gas at 130 °F.	
13. Observed City-side working face and general operations from the observation deck vantage.	
Water trucks actively applying water throughout landfill.	
14. Observed City Top Deck B.	
15. Observed Sediment Basin A to be clear of sediment except 1/2" to 1" of sediment around drains.	
16. Observed wind-blown trash along NW slope of Sediment Basin A.	
17. Observed Westside Drainage upfitting along concrete floor, cracked and spalling concrete walls, and bushes growing over ditch and undermining concrete walls. One large tree has been removed, leaving a damaged wall.	
18. Observed County-side working face; trash fence effective on this windy day.	
19. Measured County Top Deck working face top elevation to be 1852 feet by tippers. Slope measured 1.6 % towards north perimeter boundary (Monument P-12, at 1834 feet).	
20. Observed Terminal Sediment Basin to have several feet of sediment collected around ventral drainpipes. Otherwise, clear of trash and debris.	
FURTHER REVIEW NEEDED	
3. Remove wind-blown trash from NW slope of SB-A.	
4. Remove brush and repair concrete along Westside Drainage.	
Project Number: 5800	Signed: <i>Mike Lindsay</i>

Appendix IV

Meeting Logs

**Sunshine Canyon Landfill
Meeting Log for February 2014 Site Monitoring**

February 5, 2014

Gas-to-energy meeting during the monitoring with Scott P. Gauthier, Project Manager for facility owner Landfill Energy Systems, and George Wentz, Vice President of HRGreen, facility design engineers.

Attendees:

John Nelson, LACDPW
James Aidukas, UltraSystems
Mike Lindsay, UltraSystems



Discussion:

We stopped at the construction trailer and had a discussion with Scott Gauthier and George Wentz concerning the construction status and estimated start of electricity sales. Scott Gauthier stated that they were on schedule and that commissioning will occur in approximately three months (early May.) The start of power sales is scheduled to occur in early July.

Post-monitoring meeting with Tim Johnson, Republic's Division Manager; Patti Costa, Republic's Environmental Manager; Becky Van Sickle, Republic's Environmental Compliance Specialist; and Achaya Kelapanda, Republic's Environmental Manager

Attendees:

John Nelson, LACDPW
James Aidukas, UltraSystems
Mike Lindsay, UltraSystems

Discussion:

We discussed issues that Emiko Thompson had emailed to Patti Costa on February 4th. Patti Costa handed her responses and a copy of the email to us. These documents, along with a copy of the Water Board's approval of Cell CC-3A Part 2B, are attached.

We also discussed:

1. Well #691 was leaking gas. Achaya Kelapanda stated that he was aware of the problem and that crews were making repairs as we met.
2. The water seep from the abandoned pipe and the culvert drain in the City soil stockpile was getting bigger. Tim Johnson stated that they were in the process of moving soil to fully expose and cap the water at its source.
3. We observed exposed trash mixed in with cover soil near the City/County line on the top deck. Patti Costa, Becky Van Sickle, and Fred Jones requested that they be taken to the site. They observed the condition and stated that action would be taken to correct any deficiencies.

**Sunshine Canyon Landfill
County and City Re-Vegetation Efforts Meeting**

February 12, 2014

Attendees:

Patti Costa, Republic Services
Becky Van Sickle, Republic Services
Russell Bukoff, LACDPW
Clark Ajwani, LACDPW
Dave Nguyen, LACDPW
Joe Decrurandaere, LA County Planning
Ly Lam, LA City Planning
Glen Denson, Architerra Design Group
Richard Krumwiede, Architerra Design Group
James Aidukas, UltraSystems
Joe Thompson, UltraSystems
Betsy Landis, Citizen's Advisory Committee

Discussion:

A re-vegetation efforts meeting was held at the County's DPW offices to discuss the progress being made by Republic Services regarding temporary re-vegetation, sage mitigation re-vegetation, and long-term permanent vegetation efforts. A copy of the email from Russell Bukoff documenting this meeting is attached.

February 19, 2014

Post-monitoring meeting with Tim Johnson, Republic's Division Manager; Patti Costa, Republic's Environmental Manager; Becky Van Sickle, Republic's Environmental Compliance Specialist; and Achaya Kelapanda, Republic's Environmental Manager

Attendees:

John Nelson, LACDPW
James Aidukas, UltraSystems
Mike Lindsay, UltraSystems
Susan Foster, UltraSystems



Discussion:

Patti Costa handed out a copy of an email responding to a request for information from Dave Nguyen. Each of these areas were discussed. A copy of the email is attached.

We also discussed the following:

1. During the monitoring, well #441 was leaking gas. Achaya Kelapanda said that repair materials were arriving today and it was to be fixed today.
2. The dust control on the majority of the landfill was working. However, the high winds did affect some areas and dust was being seen. The operations staff did have extra water trucks working to try to control these areas.
3. It was observed during monitoring that the westside drainage channel had one tree removed that was impacting the channel concrete sidewall. Republic stated that the second tree would be removed and that the channel concrete repair would coincide with the extension of the westside perimeter drainage construction.
4. Wind-blown litter was observed on the native hillsides of Basins A and B. Tim Johnson stated that they only can remove what can safely be reached. He said he would have operations look at the areas.
5. We mentioned that Sierra Highway was cleaned of litter. However, there were three things illegally dumper, a door and two large trash-filled bags.
6. The removal of Flare 8 and hillside grading was discussed. Tim Johnson stated that no work on these tasks will occur until after the gas-to-energy facility is in operation.
7. The need for having a secondary access road was discussed with the possibility of just grading the City south top deck oil field road for passenger car use. Tim Johnson stated he would look into the feasibility of this option.
8. Patti Costa stated that SCAQMD was at the site to review and test flare emissions and found the flares to be in compliance.

Appendix V

Landfill Elevations

INTRODUCTION

During the first quarter of 2014, UltraSystems conducted Global Positioning System (GPS) surveys at the Sunshine Canyon Landfill, located in Sylmar, California. GPS data was collected for the Buttress area and the Los Angeles County Top Deck area.

EQUIPMENT USED

A Trimble GeoXH 2008 Series handheld GPS device running TerraSync Professional software was used for the measurements. The device has a horizontal and vertical accuracy of 0.1 meters. The GPS built-in antenna was used with a four-foot vertical offset to compensate for carrying the device. Also, the unit was kept ten feet away from any materials that could have an effect on satellite signal reception (e.g. metal within well heads).

MEASUREMENT LOCATIONS

Transect lines were walked for elevation data along natural contours, ridge lines, break points and high/ low areas. For reference purposes, several gas well locations were measured multiple times, each on a different survey date. This helped to verify data consistency. Also, previous transect lines were navigated on the County Top Deck so elevation comparisons could be made.

MEASUREMENT RESULTS

The Buttress area was measured for elevation (feet) and slope (percent grade). The Buttress area slope measured 4.8 % across a length of 835.8 feet.

For this reporting period, elevation measurements showed a slight decrease in stockpiled soil on the County Top Deck. For the County Top Deck area, the average elevation was 1,872.0 feet above mean sea level. The average change in elevation for this same area was -0.4 feet (see GPS Elevation Data Table, Appendix V).

The County Top Deck slope in percent grade was calculated to be 1.6 % across a length of 1,114 feet. This northern portion of the County Top Deck (map grid K4 and K5) sloped down towards the landfill perimeter at Monument P-12.

GPS Data Logs

January 15, 2014

Buttress Area Elevation and Slope Measurement

Performed by:

Mike Lindsay, UltraSystems (see GPS Elevation Map)

February 19, 2014

County Top Deck Elevation Measurements

Performed by:

Mike Lindsay, UltraSystems (see GPS Elevation Map and Data Table)

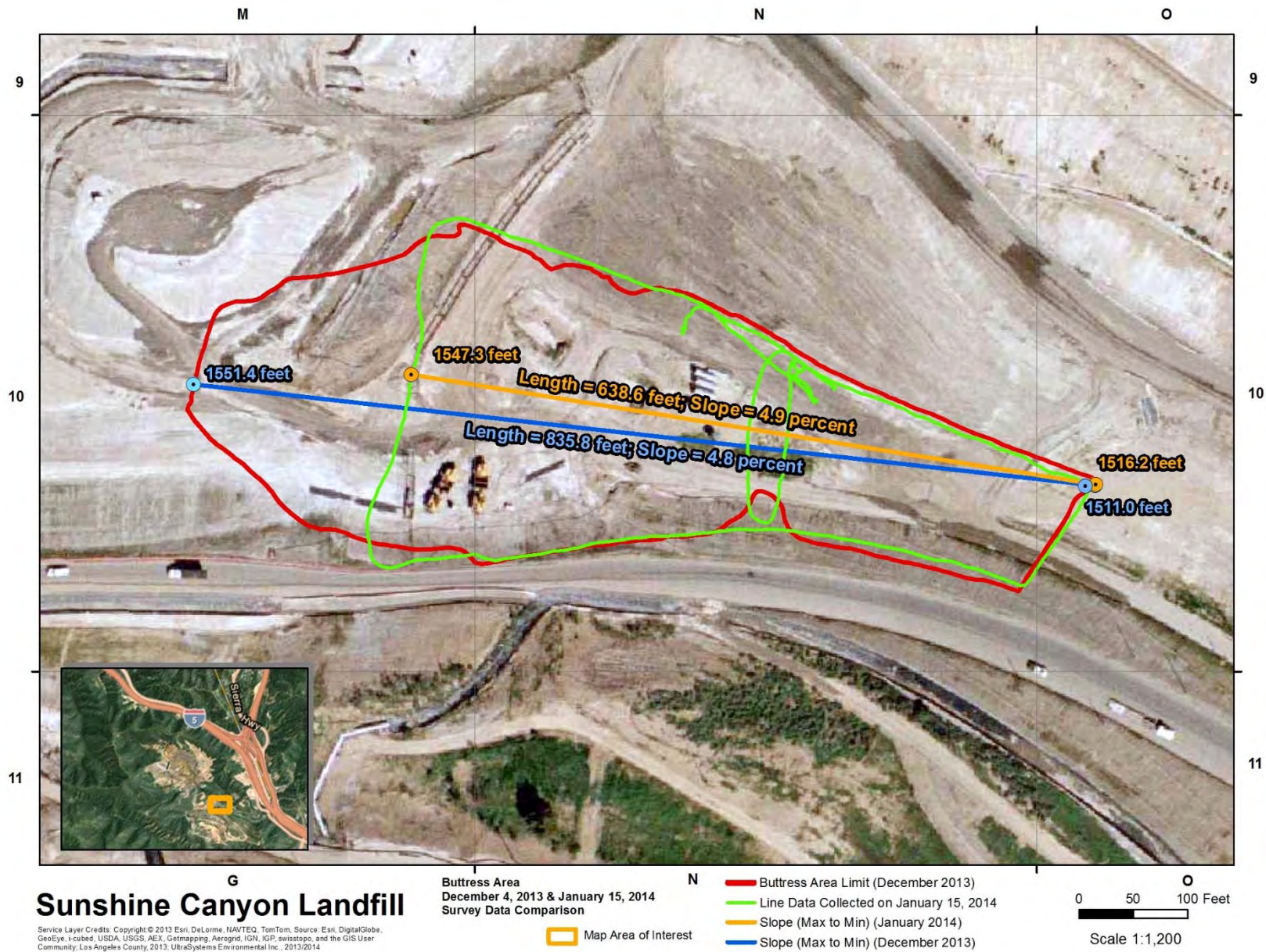
March 12, 2014

County Top Deck Elevation and Slope Measurement

Performed by:

Mike Lindsay, UltraSystems (see GPS Elevation Map)

GPS Elevation Maps





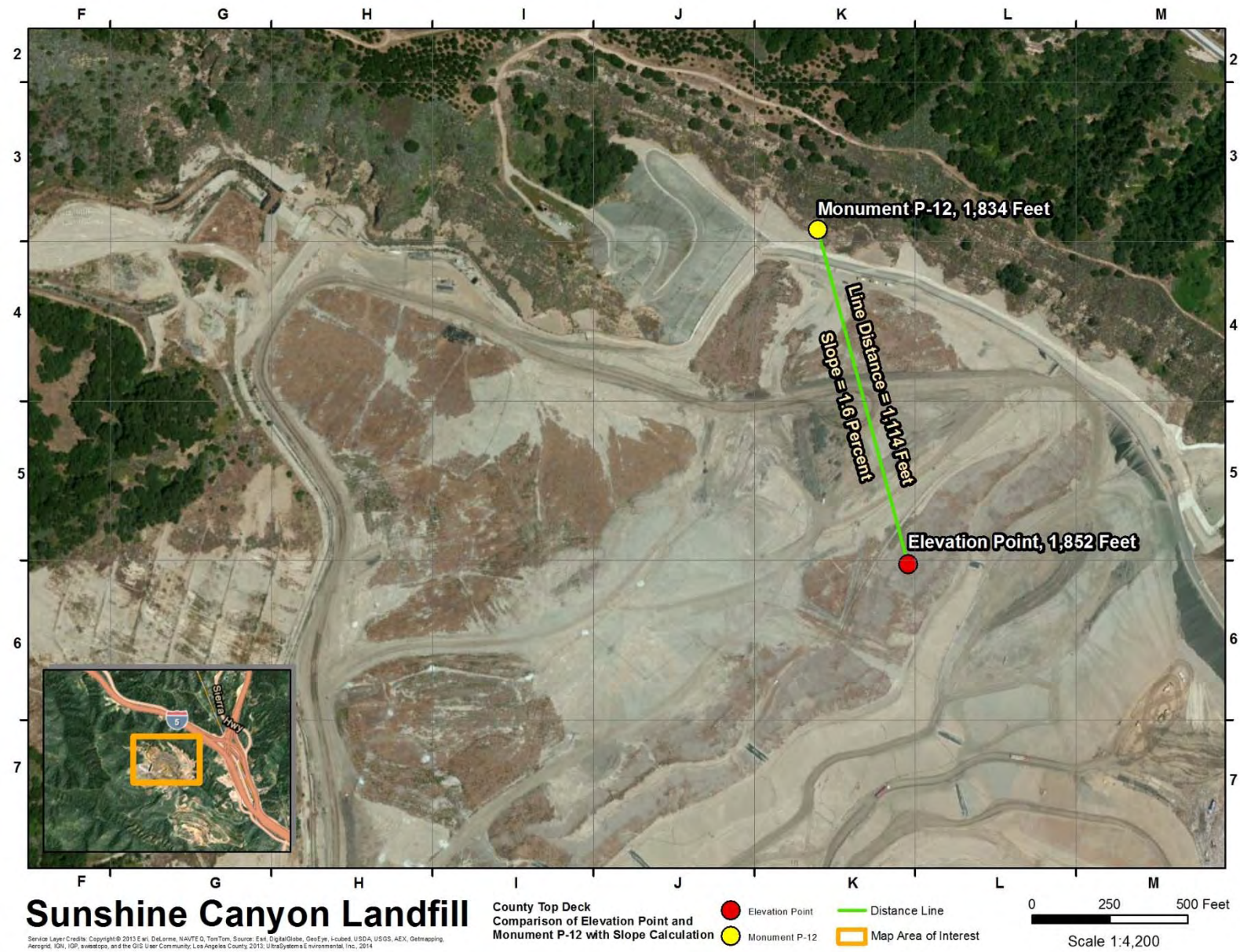
Sunshine Canyon Landfill

Service Layer Credits: Copyright © 2012 San, DeLorme, NAVTEQ, TomTom, Source: San, DigitalGlobe, GeoEye, (Imagery), USDA, USGS, Aero, GeoMapping, AeroMap, IGN, IGR, Aerialphoto, and the GIS User Community, Los Angeles County, 2012, UltraSystems Environmental, Inc., 2014

County Top Deck
Change of Elevations in Feet From
February 19, 2014 to December 4, 2013

● Elevation Data Point
□ Map Area of Interest

0 250 500 Feet
Scale 1:4,200



GPS Elevation Data Tables

SCL – Elevation Comparison of December 4, 2013 and February 19, 2014 Surveys (feet)

Map Grid	GPS Survey Date	Elevation	GPS Survey Date	Elevation	Elevation Difference Dec 4 / Feb 19
H7	12-04-2013	1878.9	02-19-2014	1879.3	0.4
H7	12-04-2013	1874.0	02-19-2014	1874.3	0.3
H7	12-04-2013	1873.5	02-19-2014	1874.2	0.7
H8	12-04-2013	1871.4	02-19-2014	1872.7	1.3
H8	12-04-2013	1861.1	02-19-2014	1861.4	0.3
H8	12-04-2013	1858.5	02-19-2014	1857.3	-1.2
H8	12-04-2013	1863.5	02-19-2014	1862.2	-1.3
I8	12-04-2013	1868.1	02-19-2014	1866.7	-1.4
I7	12-04-2013	1873.9	02-19-2014	1872.0	-1.8
I7	12-04-2013	1880.7	02-19-2014	1879.0	-1.6
I7	12-04-2013	1882.2	02-19-2014	1880.7	-1.5
I7	12-04-2013	1884.4	02-19-2014	1883.0	-1.5
J7	12-04-2013	1886.3	02-19-2014	1885.3	-1
J6	12-04-2013	1888.3	02-19-2014	1887.3	-1
J6	12-04-2013	1872.4	02-19-2014	1871.3	-1.1
K6	12-04-2013	1860.4	02-19-2014	1859.4	-1.1
K6	12-04-2013	1856.9	02-19-2014	1855.6	-1.3
K6	12-04-2013	1855.5	02-19-2014	1855.2	-0.2
K6	12-04-2013	1857.7	02-19-2014	1857.3	-0.4
K6	12-04-2013	1859.8	02-19-2014	1859.6	-0.2
J6	12-04-2013	1893.7	02-19-2014	1891.9	-1.8
J6	12-04-2013	1890.7	02-19-2014	1890.2	-0.5
J6	12-04-2013	1877.7	02-19-2014	1877.8	0.1
J6	12-04-2013	1861.5	02-19-2014	1861.5	0
J5	12-04-2013	1853.3	02-19-2014	1858.3	5

Map Grid	GPS Survey Date	Elevation	GPS Survey Date	Elevation	Elevation Difference Dec 4 / Feb 19
J5	12-04-2013	1852.2	02-19-2014	1855.4	3.2
J5	12-04-2013	1855.3	02-19-2014	1855.1	-0.3
J5	12-04-2013	1867.8	02-19-2014	1867.8	0
J5	12-04-2013	1870.9	02-19-2014	1867.0	-3.9
J5	12-04-2013	1870.6	02-19-2014	1867.4	-3.2
J5	12-04-2013	1872.3	02-19-2014	1870.8	-1.5
I5	12-04-2013	1881.9	02-19-2014	1881.3	-0.5
I5	12-04-2013	1880.9	02-19-2014	1881.1	0.1
J5	12-04-2013	1865.2	02-19-2014	1864.7	-0.5
I5	12-04-2013	1868.1	02-19-2014	1867.2	-0.9
I5	12-04-2013	1870.9	02-19-2014	1870.7	-0.2
I5	12-04-2013	1876.7	02-19-2014	1876.1	-0.6
I4	12-04-2013	1884.8	02-19-2014	1884.4	-0.4
H4	12-04-2013	1887.2	02-19-2014	1887.4	0.2
H5	12-04-2013	1889.5	02-19-2014	1888.9	-0.6
H5	12-04-2013	1872.4	02-19-2014	1872.9	0.5
H5	12-04-2013	1872.3	02-19-2014	1873.4	1.1
H5	12-04-2013	1874.0	02-19-2014	1874.8	0.8
H4	12-04-2013	1889.9	02-19-2014	1891.1	1.2
	12-04-2013	1872.4 (Average)	02-19-2014	1872.0 (Average)	-0.4 (Average)