



# Local Emergency Regulations

CF# 20-0380-S1

LOS ANGELES  
CITY PLANNING

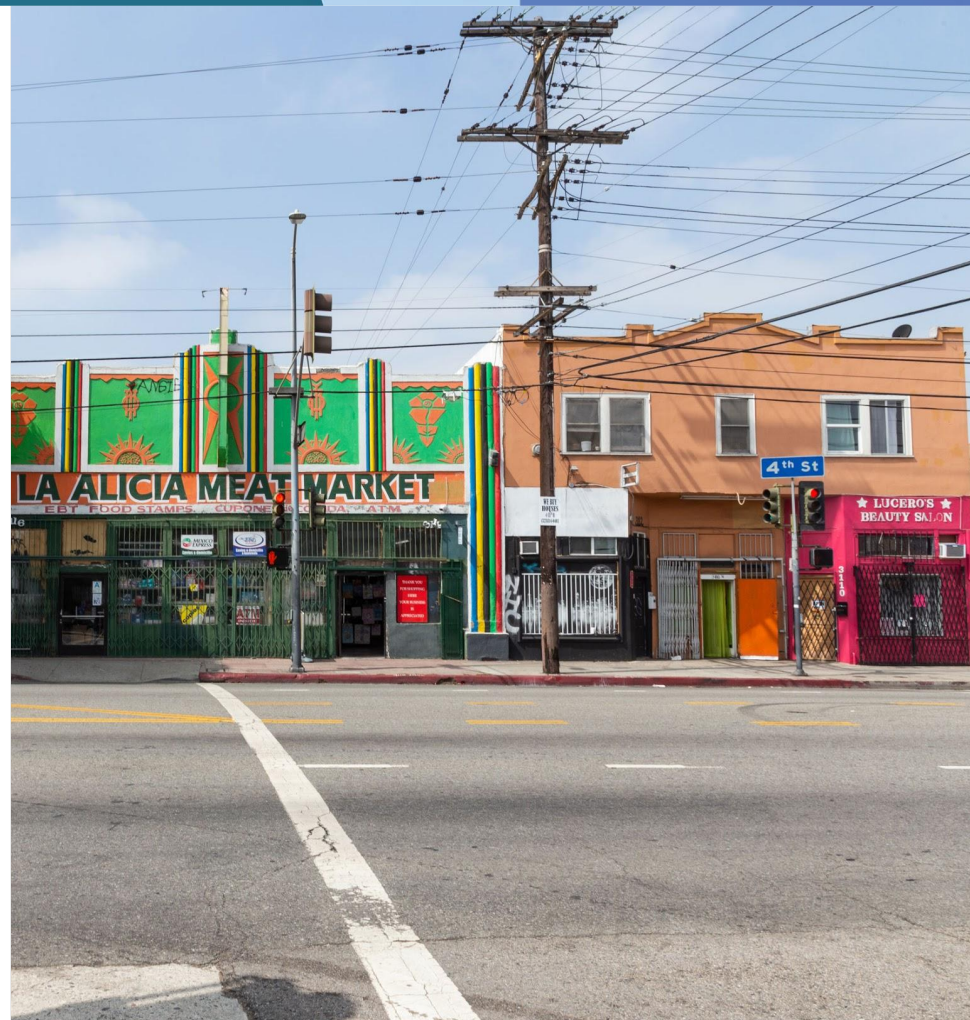
---

---

*“Small businesses, including restaurants, are the backbone of the Los Angeles economy”*

# Timeline

- Introduced: March 2020
- Adopted: May 2020
- Public Release: October 2020
- Public Hearing: November 2020
- City Planning Commission: December 2020



# Motion Summary

- Extend all expiring conditional use permits
- Suspend additional parking in connection with change of use
- Suspend off-site and valet parking

# Proposed Ordinance (Article 6)

## Key Provisions

- **Trigger:** Governor, Mayor, or City Council must declare a state of emergency, then Mayor (Executive Order) or Council (Resolution) can enable.
- **Duration:** Active during local emergency and up to 12 months after its expiration or termination with option to extend up to 36 months

# Proposed Ordinance Cont'd

## Main Components

- **Extension of Time Limits:**
  - Conditional Use Permits (CUP) with a term-limit or expiration
  - Utilization periods for certain approvals
  - Any concurrent entitlement, as part of a multiple approval
- **Automobile Parking Requirements:**
  - *Changes of Use:* No new parking requirements for an existing building
  - *Valet parking:* Relief from conditions of approval requiring valet parking
  - *Off-site parking:* Relief from conditions of approval requiring off-site parking beyond Code requirement

# Eligibility

## Extension of Time Limits

- **Eligible:** Most approved or active CUPs and concurrent actions
- **Ineligible:** Intense environmental impacts (ex. petroleum extraction)
- **Ineligible:** Those subject to revocation proceeding that result in corrective action

## Automobile Parking Requirements

- *Changes of Use:*
  - o **Eligible:** Non Residential uses only
  - o **Ineligible:** Expansions beyond current building footprint or tenant space
  - o **Ineligible:** Buildings or tenant space over 5,000 sf. (at once or in aggregate)
- *Valet & Off-site Parking:*
  - o **Ineligible:** Variances

# Applicability

## Extension of Time Limits

- Term-limited approval extensions will sunset with the termination of these provision.
- All other conditions are still required only the date for compliance is extended.

## Automobile Parking Requirements

- *Changes of Use*: Parking modifications for eligible businesses/properties are permanent.
- *Valet & Off-site Parking*: Parking modifications for eligible businesses/properties are temporary.



---

*“...the City can and should take steps to eliminate financial and regulatory burdens on small businesses affected by the Coronavirus...”*