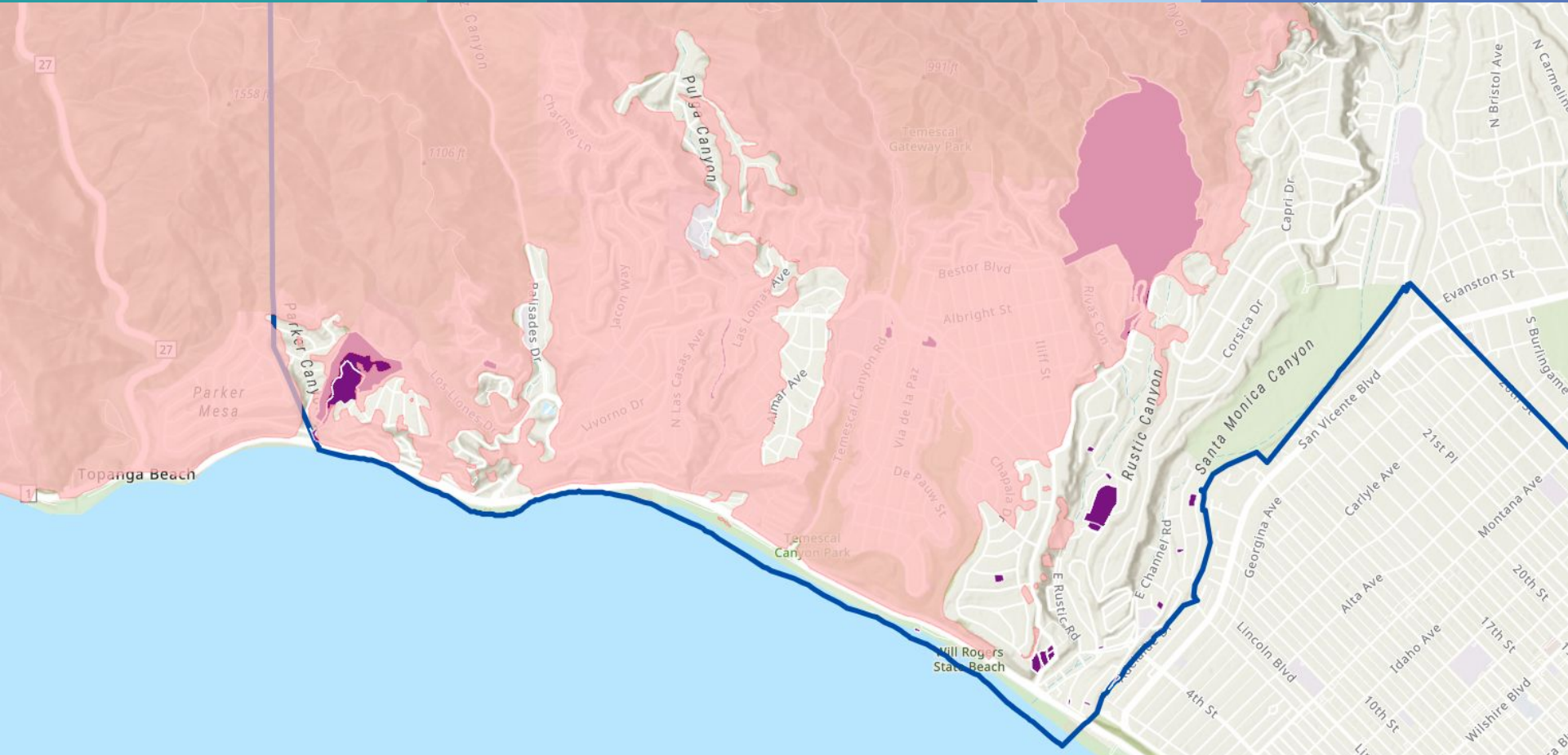




Status of Designated Historic Resources in the City of LA Impacted by Palisades Fire

February 2025

LOS ANGELES
CITY PLANNING



Palisades Fire perimeter in pink with designated historic resources shaded in purple.

Assessment

- 12 designated historic resources located within the City of LA boundaries of the Palisades Fire burn areas
- Two resources red tagged
 - Will Rogers House and Ranch
 - Palisades Business Block
- Two resources LADBS was unable to access, but status confirmations were received
 - Camp Josepho Malibu Lodge - Destroyed
 - Getty Villa Museum - Intact
- Eight resources green tagged
 - Feuchtwanger House (Villa Aurora)
 - Sycamore Trees on Bienvenida
 - Site of Founders Oak
 - Aldersgate/ We Boys - J.O.C. Lodge
 - Parry Residence
 - Eames House, Studio, and Grounds
 - John Entenza House
 - Case Study House 18

Destroyed or Damaged Resources

An aerial photograph of a city, likely Los Angeles, showing a dense residential area with various apartment buildings and houses. The image is overlaid with a gradient that transitions from a warm orange-red on the left to a cool blue on the right. The text 'Destroyed or Damaged Resources' is centered in white, with a horizontal line above it on the left side.

Will Rogers House and Ranch

501 Will Rogers State Park Road

Destroyed

- Listed on the National Register in 1971.
- Only structure of the ranch green tagged was the maintenance building.
- Any remaining structures red tagged.
- House is gone.





Remains of the Will Rogers House



Remains of the Will Rogers House



Remains of the garage

Palisades Business Block

15300-15318 Sunset Boulevard

Largely Destroyed

- Listed as HCM #276 in 1984.
- Entire structure red tagged, only outer facade remains.





Remains of the Palisades Business Block. View from Swarthmore at Sunset Blvd.



Remains of the Palisades Business Block. View from Sunset Blvd, east of Via de La Paz.



Remains of the Palisades Business Block. View from Sunset Blvd.

Camp Josepho Malibu Lodge

3000 Rustic Canyon Road

Destroyed

- Listed as HCM #547 in 1991.
- LADBS could not access the property during its inspection.
- The scouting organization that owns it has publicly confirmed its destruction.



Intact Historic Resources

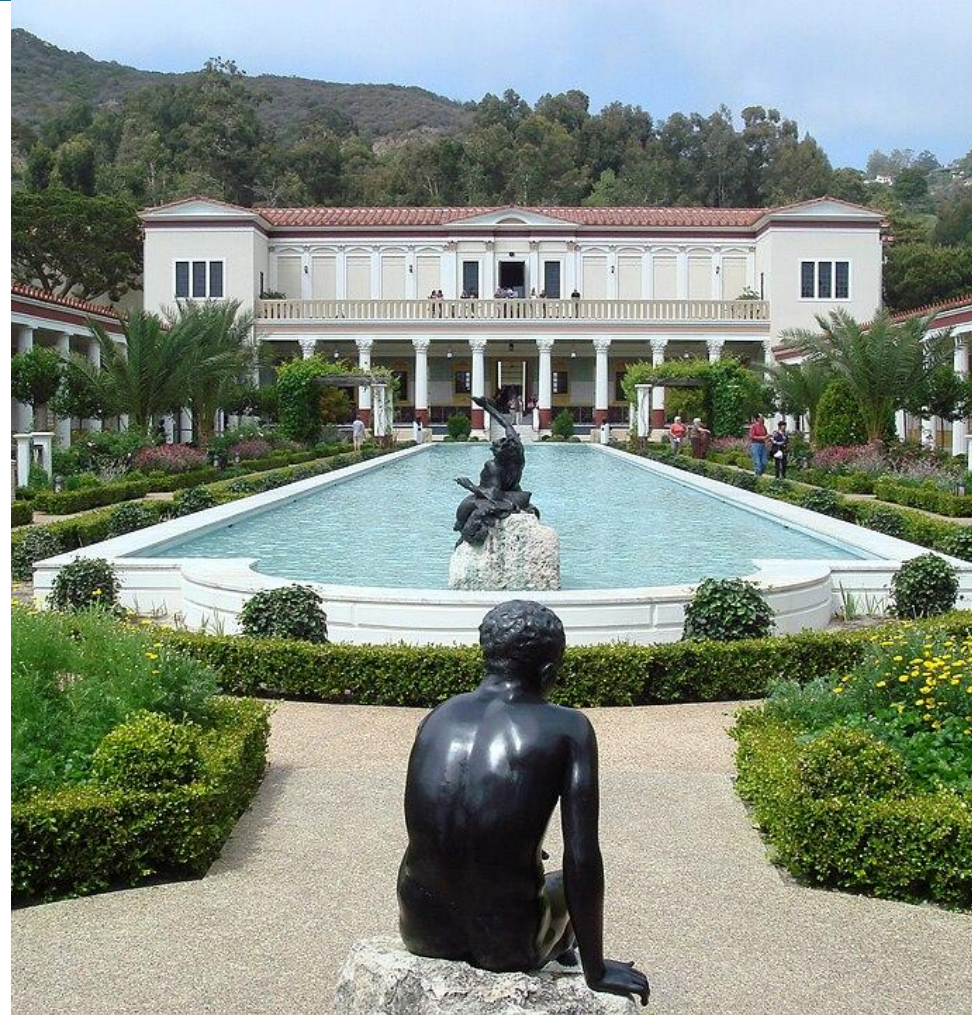
An aerial photograph of a city, likely Los Angeles, showing a dense residential area with various apartment buildings and houses. The image is overlaid with a color gradient that transitions from a warm orange on the left to a cool blue on the right. The text 'Intact Historic Resources' is centered in white, with a short white horizontal line above it on the left side.

Getty Villa Museum

17985 Pacific Coast Highway

Intact

- Listed on the California Register in 2012.
- LADBS could not access the property during its inspection.
- The Getty Museum has publicly confirmed that it is intact.

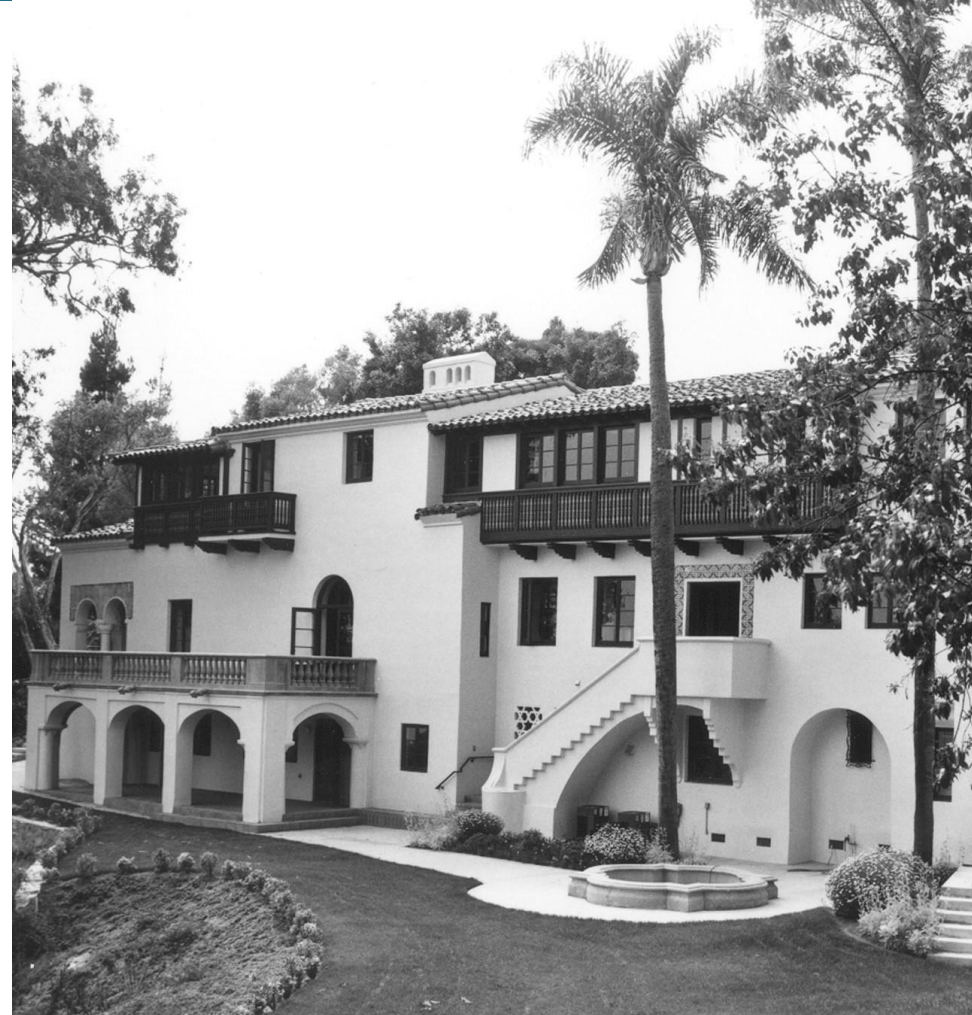


Feuchtwanger House (Villa Aurora)

520 Paseo Miramar

Intact

- Listed as HCM #589 in 1994.
- Green tagged by LADBS on January 18, 2025.





Sycamore Trees

Bienvenida Ave, south of Sunset Blvd.

Largely Intact

- Listed as HCM #465 in 1989.
- LADBS inspection found two trees partially burned







Site of Founders Oak

Haverford Avenue (Between Sunset Boulevard and Antioch Street)

Marker Intact

- Listed as HCM #38 in 1966.
- Tree itself was previously cut down.





SITE OF FOUNDERS' OAKS
WHERE PACIFIC PALISADES WAS
FOUNDED, JANUARY 14, 1922.
LANDMARKED, JULY 16, 1955.
PACIFIC PALISADES HISTORY
AND LANDMARKS SOCIETY



Aldersgate We Boys / JOC Lodge

925 N Haverford Ave

Intact

- Listed as HCM #936 in 2008.
- Green tagged by LADBS on January 18, 2025.





Parry Residence

14924 W Camarosa Dr

Intact

- Listed as HCM #1191 in 2019.
- Green tagged by LADBS on January 18, 2025.





Case Study House #8 - The Eames House, Studio, and Grounds

203 Chautauqua Blvd

Intact

- Listed as HCM #381 in 1988.
- Listed as a National Historic Landmark in 2006
- Green tagged by LADBS on January 18, 2025.







Case Study House #18 - The West House (Rodney Walker)

199 Chautauqua Blvd

Intact

- Listed in the National Register of Historic Places, 2013.
- Green tagged by LADBS on January 18, 2025.



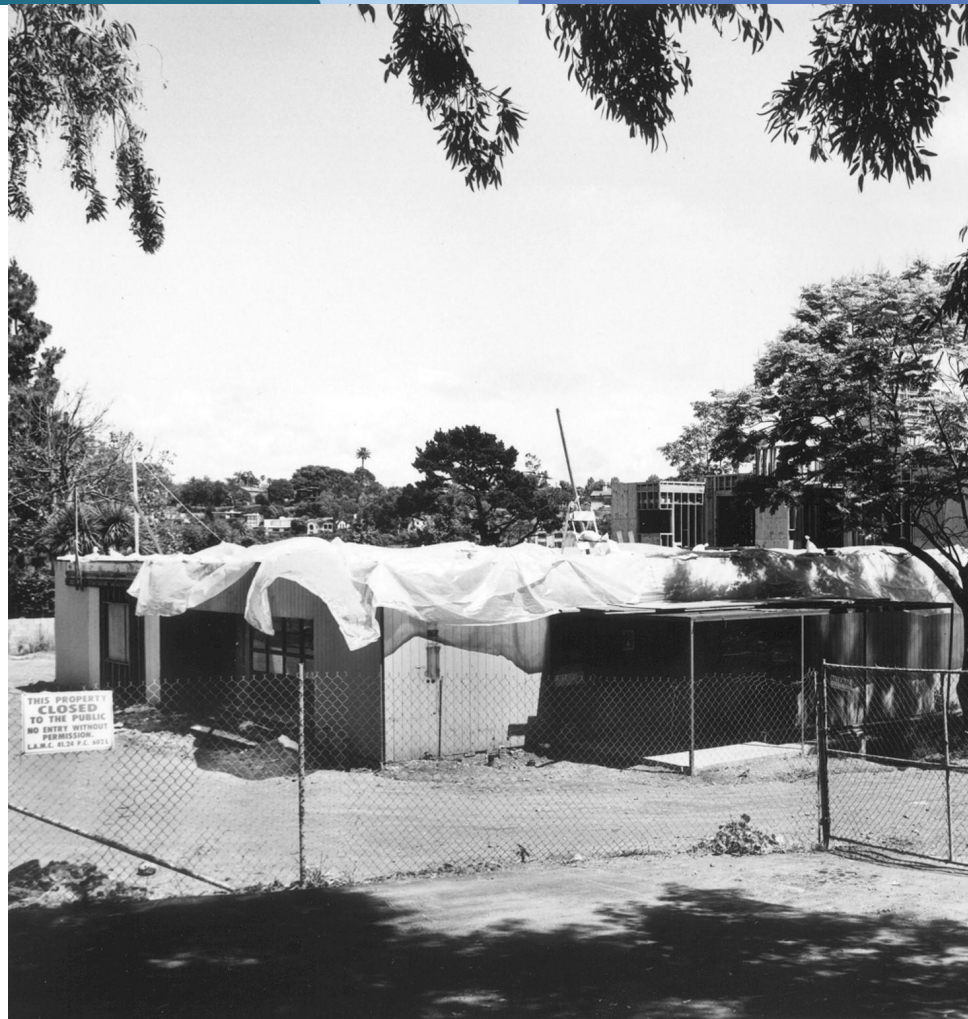


John Entenza House Case Study House #9

205 Chautauqua Blvd

Intact

- Listed as HCM #530 in 1991.
- Listed in the National Register of Historic Places, 2013
- Green tagged by LADBS on January 18, 2025.





Additional Pacific Palisades Designated Resources Not Impacted - Outside Burn Area



Kappe Residence,
HCM #623



Sten/Frenke-Gould
Residence, HCM #647



Uplifters Clubhouse,
HCM #663

Additional Pacific Palisades Designated Resources Not Impacted - Outside Burn Area



Pascual Marquez Family
Cemetery, HCM #685



Barsha House,
HCM #983



Gibbons-Del Rio
Residence, HCM #1038

(Not Pictured)

Marquez Filling Station, HCM #800

Isherwood Bachardy Residence and Studio, HCM #1212

For more information on Pacific Palisades Historic Resources

Visit [HistoricPlacesLA](#), the searchable citywide inventory of historic resources.

See the [reports from the 2013 survey of Pacific Palisades](#) conducted by SurveyLA, the Los Angeles Historic Resources survey.

Contact the Office of Historic Resources at planning.ohr@lacity.org, or (213) 847-3646.