

# DRAFT GENERAL PLAN LAND USE DESIGNATION MAP

## Reseda-West Van Nuys-Lake Balboa



### GENERAL PLAN DESIGNATION

- Community Center
- Villages
- Neighborhood Center
- Medium Neighborhood Residential
- Medium Residential
- Low Neighborhood Residential
- Low Residential
- Very Low Residential
- Industrial
- Light Industrial
- Production
- Open Space
- Public Facilities
- Public Facilities - Freeway

### FAR BASE | BONUS

- 1.5 | 3-5
- 1.5 | 3
- 1.5 | 3
- 1.5 | 3
- 1.5 | 3
- 1.5 | 3
- 0.45 | --
- 0.25-0.40 | --
- 1.5 | --
- 1.5 | 0-3
- | --
- 1.5 | --
- 1.5 | --
- | --

### HEIGHT BASE | BONUS

- 3 stories | 5-8 stories
- 3 stories | 5 stories
- 3 stories | 5 stories
- 3 stories | 5 stories
- 3 stories | --
- 3 stories | --
- 33' | --
- 36' | --
- | --
- | --
- | --
- | --
- | --
- | --

### USE

- Community Center, Commercial Mixed Auto Service
- Neighborhood Center
- Neighborhood Center
- Mixed-Use Neighborhood
- Residential Limited
- Mixed-Use Neighborhood
- Residential Limited
- Residential Limited
- Residential Limited
- Heavy Industrial Preserve
- Light Industrial Sensitive, Light Industrial Preserve
- 
- Open Space
- Public Facilities Restrictive, Public Facilities Permissive
- 

### CORRESPONDING

### DENSITY

- 4
- 4
- 4
- 8
- 8
- 15
- 4L, 30, 20, 15
- 1L
- 1L
- NA
- NA
- NA
- NA
- FA
- 

### SPECIAL DISTRICT

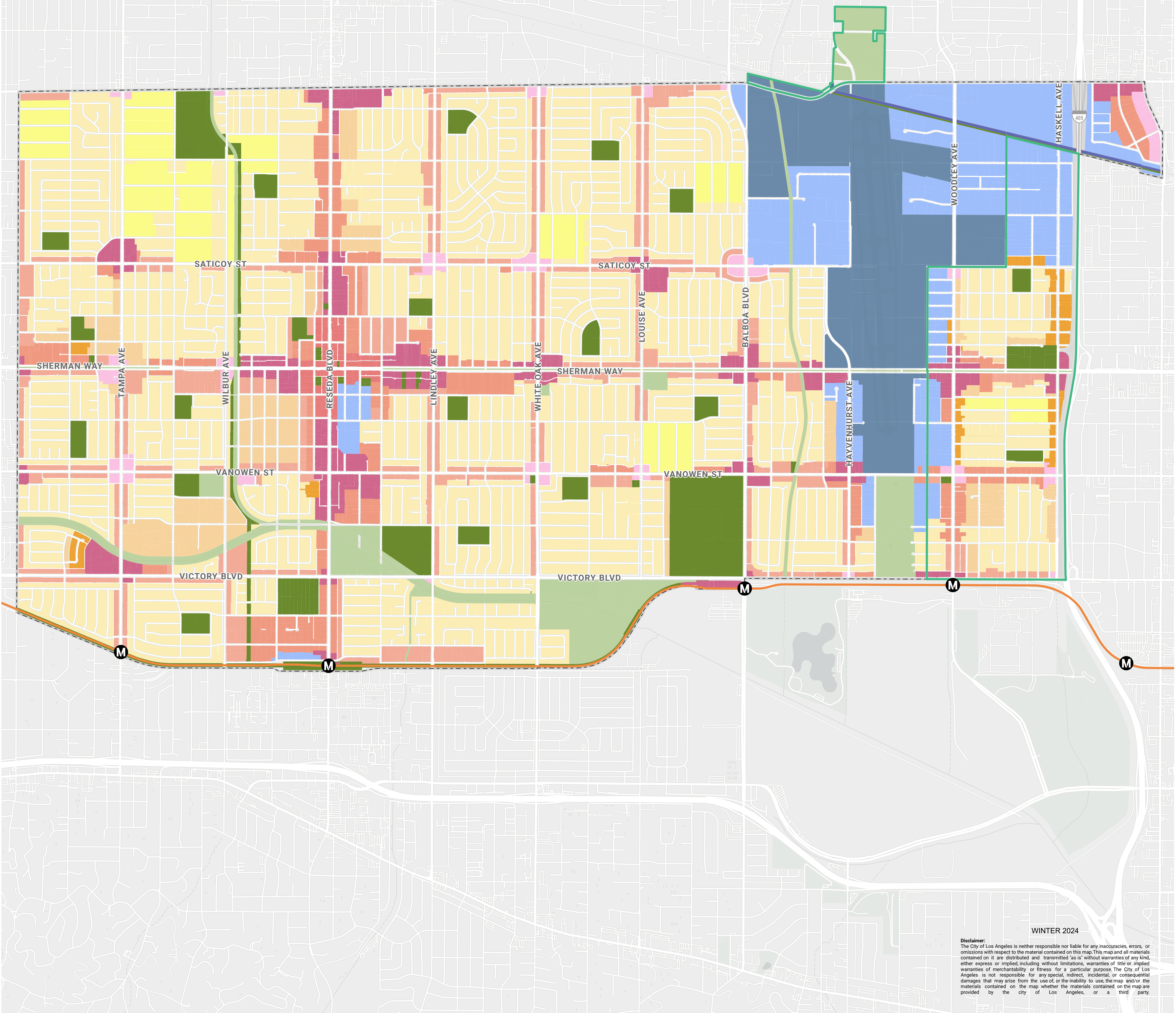
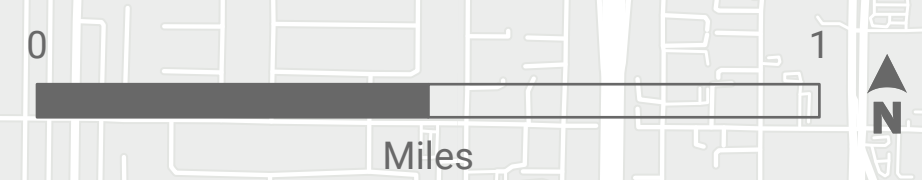
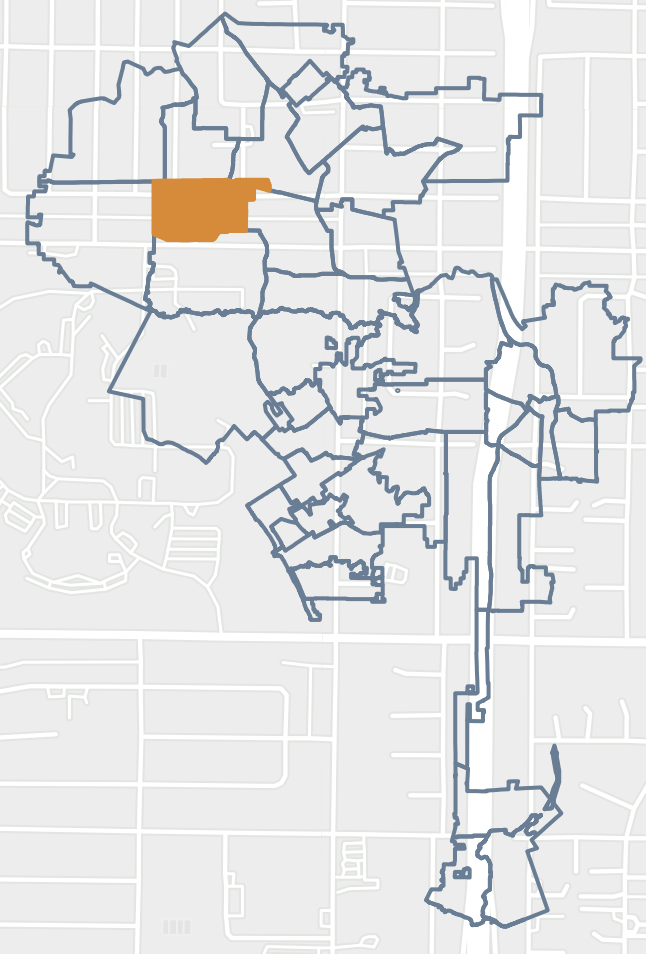
- 
- 
- 
- 
- 
- 
- 
- 
- 
- 
- 
- 
- VNY
- VNY
- 
- FWY

### TRANSPORTATION

- M Metro Stations
- Metro Lines

### PLAN BOUNDARIES

- Community Plan Area
- Proposed Boundary Change Area



WINTER 2024

Disclaimer: The City of Los Angeles is neither responsible nor liable for any inaccuracies, errors, or omissions with respect to the material contained on this map. This map and all materials contained on it are distributed and transmitted "as is" without warranties of any kind, either express or implied including without limitations, warranties of title or implied warranties of merchantability or fitness for a particular purpose. The City of Los Angeles is not responsible for any special, indirect, incidental, or consequential damages that may arise from the use of, or the inability to use, the map and/or the materials contained on the map whether the materials contained on the map are provided by the city of Los Angeles, or a third party.