

VENICE

PLANNING



Venice Mixed Use Corridors | Working Session
Los Angeles City Planning
October and November 2019

TODAY'S OBJECTIVES

1. Introduce the City's new zoning tools
2. What is your vision for the mixed use corridors?
 - a. How can the corridors be improved?
 - b. What types of uses are desired along the Venice corridors (retail, office, multi-family residential, retail/residential mixed use)?
 - c. How do you want the built environment along corridors to look and be experienced?

WELCOME + SCHEDULE

A woman with long blonde hair, wearing a straw hat and a dark blue dress, is riding a red kick scooter across a city street. She is positioned in the center of the frame, moving from left to right. The background shows a multi-story building with a modern facade, trees, and parked cars. The scene is brightly lit, suggesting a sunny day.

4:30-5:00 pm

Doors Open + Welcome Participants

5:00-5:30 pm

Presentation

5:30-6:15 pm

Working Session + Break Out Groups

6:15-6:45 pm

Shareback - Large Group Discussion

6:45-7:00 pm

Wrap up + Next Steps

PROGRAM UPDATE

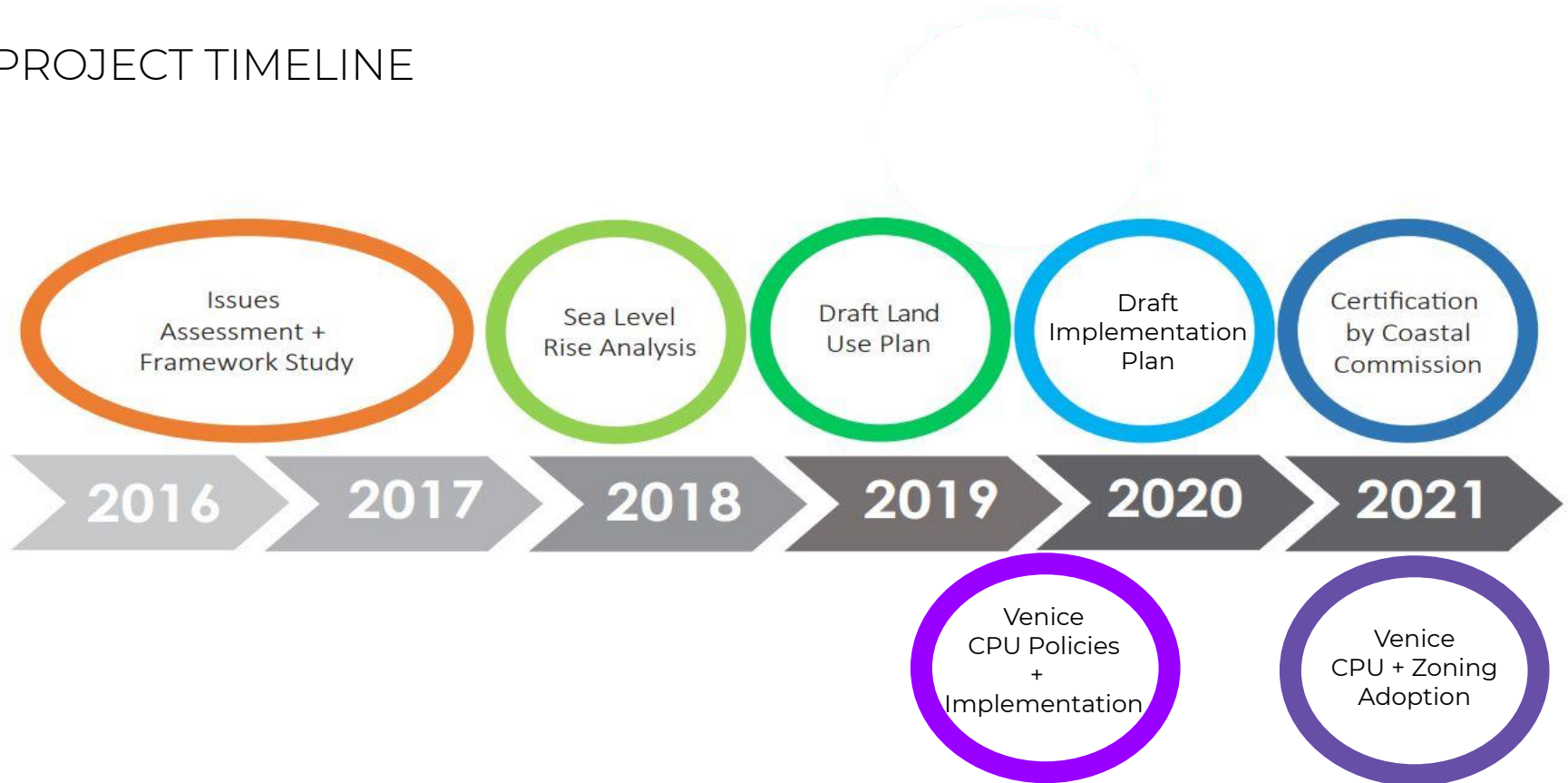
VENICE PLANNING

VENICE COMMUNITY PLAN +
VENICE LOCAL COASTAL PROGRAM



VENICE LCP/CPU WORK PROGRAM

PROJECT TIMELINE



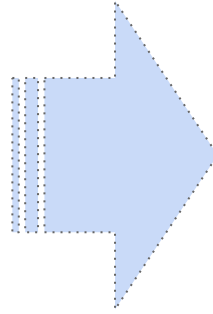
WHAT WE HEARD | July 2019 Outreach



CHALLENGE

Complicated Regulatory Environment

- Venice Community Plan
- Lincoln Blvd. CDO
- Venice Coastal Zone
 - Land Use Plan
 - Specific Plan
- Oxford Triangle Specific Plan



OPPORTUNITY

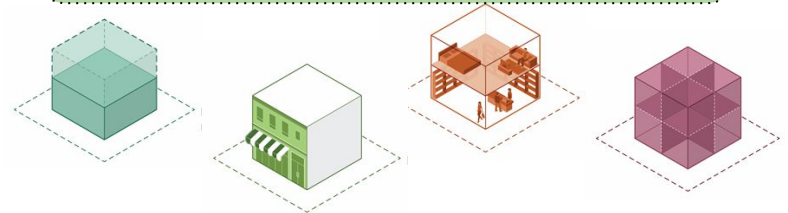
Simplified Regulatory Environment

- Responsive to Community needs
- Adaptable to future policy needs
- Visual and easy to understand

Tools that do not meet local needs.

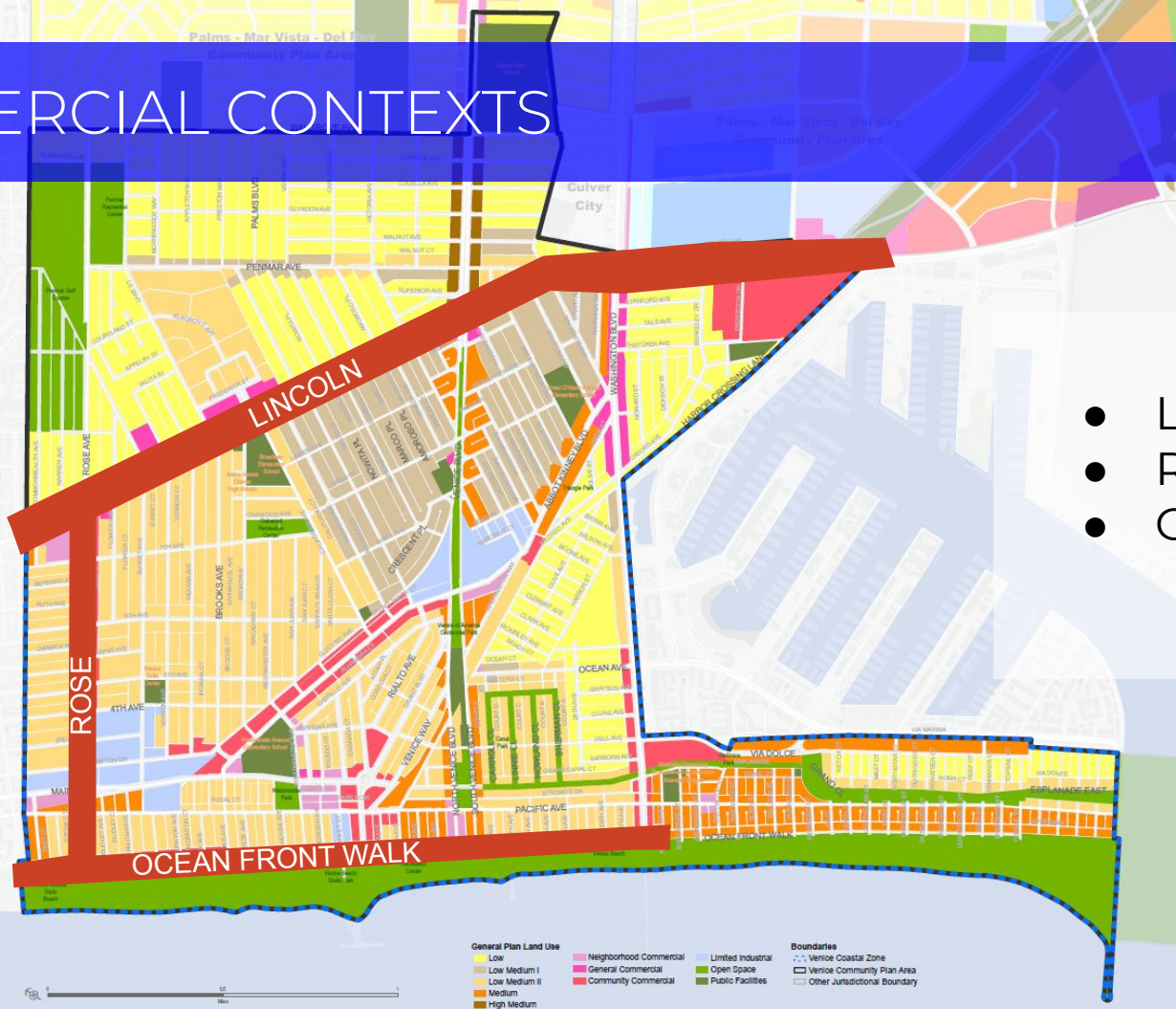
Tools that are **customized to the local context.**

- Effective implementation of community's vision

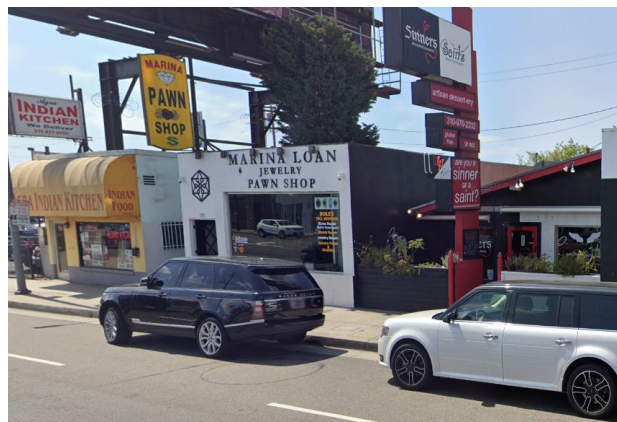


COMMERCIAL CONTEXTS

- Lincoln Blvd.
- Rose Avenue
- Ocean Front Walk



LINCOLN BOULEVARD



LINCOLN BOULEVARD | CONTEXT



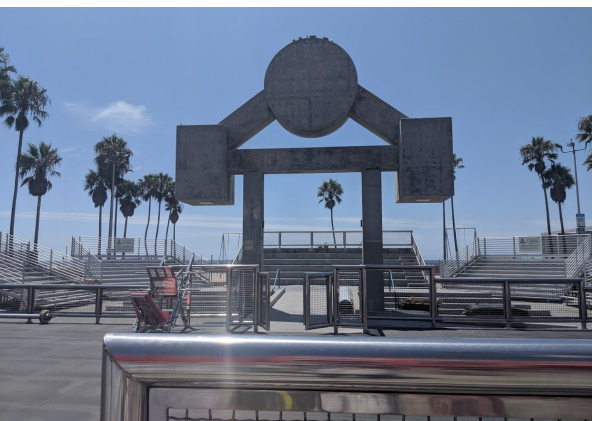
ROSE AVENUE



ROSE AVENUE | CONTEXT



OCEAN FRONT WALK



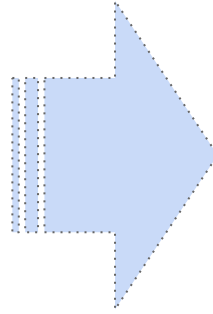
OCEAN FRONT WALK | CONTEXT



CHALLENGE

Complicated Regulatory Environment

- Venice Community Plan
- Lincoln Blvd. CDO
- Venice Coastal Zone
 - Land Use Plan
 - Specific Plan
- Oxford Triangle Specific Plan



OPPORTUNITY

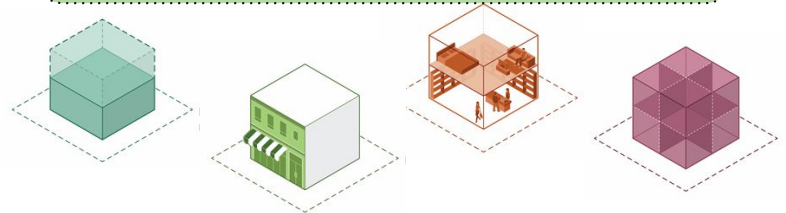
Simplified Regulatory Environment

- Responsive to Community needs
- Adaptable to future policy needs
- Visual and easy to understand

Tools that do not meet local needs.

Tools that are **customized to the local context.**

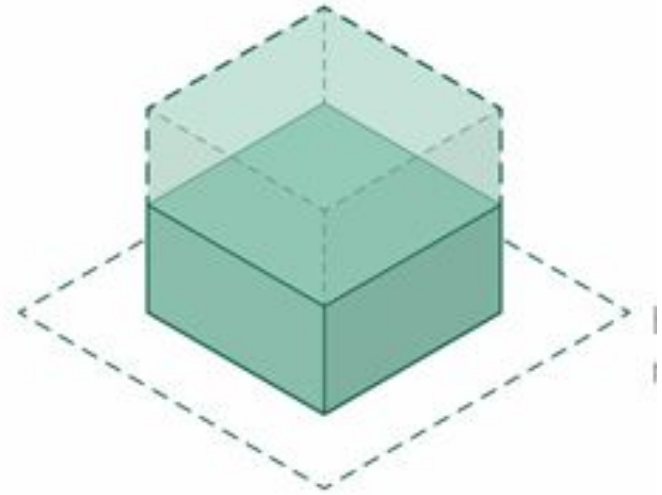
- Effective implementation of community's vision



TOOLS

FORM

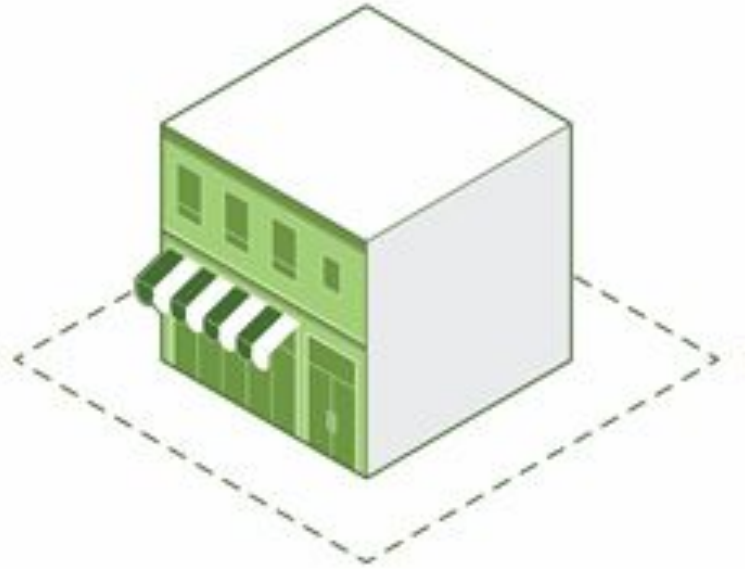
How do you envision
the built environment
in your neighborhood?



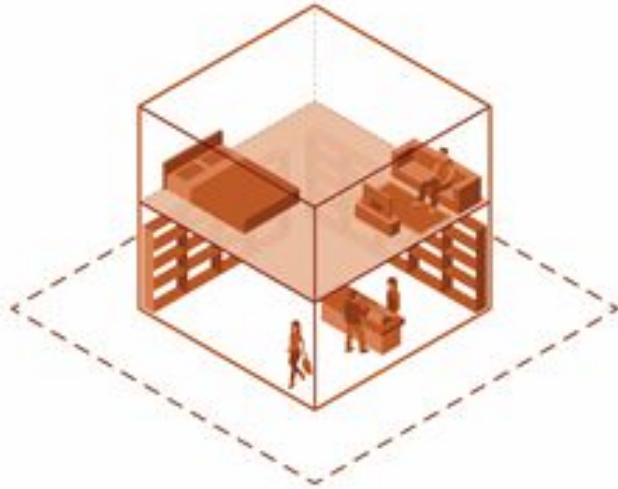
TOOLS

FRONTAGE

How should buildings
be experienced by
people ?



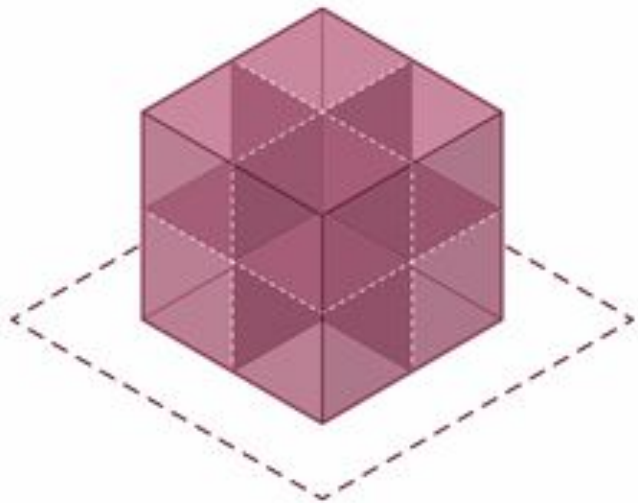
TOOLS



USE

What kinds of activities do we want to see here?

TOOLS



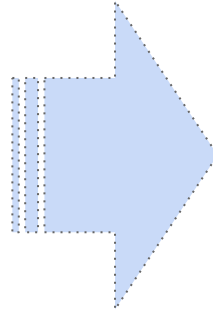
DENSITY

How can we gracefully
accommodate more
people?

CHALLENGE

Complicated Regulatory Environment

- Venice Community Plan
- Lincoln Blvd. CDO
- Venice Coastal Zone
 - Land Use Plan
 - Specific Plan
- Oxford Triangle Specific Plan



OPPORTUNITY

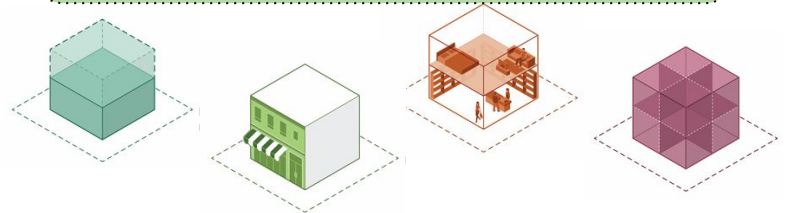
Simplified Regulatory Environment

- Responsive to Community needs
- Adaptable to future policy needs
- Visual and easy to understand

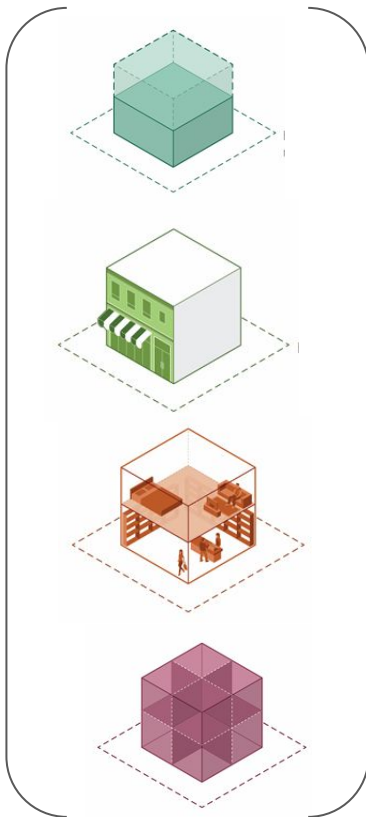
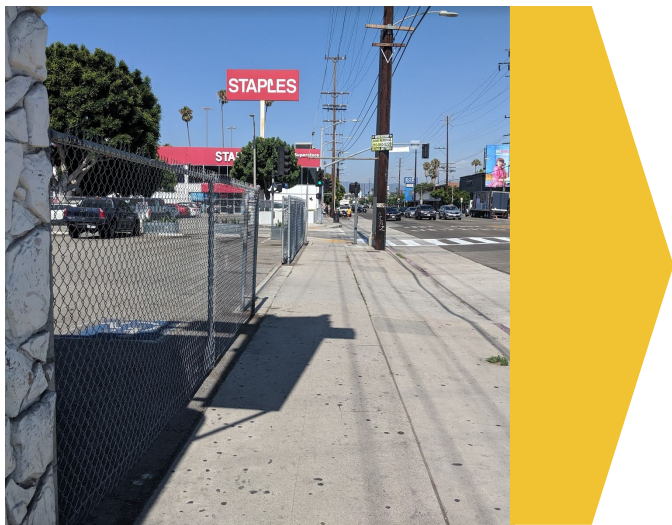
Tools that do not meet local needs.

Tools that are **customized to the local context.**

- Effective implementation of community's vision



PUTTING TOOLS INTO PRACTICE



GROUP EXERCISE

- 5:30-6:00 Buddy Exercise
- 6:00-6:45 Share Back + Discussion
- 6:45-7:00 Wrap up + Next Steps



GUIDING QUESTIONS

1. What do I want to see this place become?
2. Why do I want to go to this place?
3. How do I want to get to this place?
4. What are my main goals for new development?
5. What types of businesses do I want to see?

ADULT LEARNING SUGGESTIONS TO GET THE MOST OUT OF THE INFORMATION YOU ARE BEING PRESENTED

1. The workshop belongs to YOU and its success rests largely with YOU.
2. BUILD on each other's ideas.
3. GIVE FREELY of your experiences that focus on the issues at hand.
4. Say what you THINK to the group. (Private conversations while someone else is speaking are distracting.)
5. APPRECIATE the other person's point of view.

NEXT STEPS



An aerial photograph of Venice Beach, California, showing the sandy beach, palm trees, and the surrounding urban area. The Los Angeles city skyline is visible in the distance under a clear blue sky. The image is overlaid with a semi-transparent blue filter.

THANK YOU

VENICE PLANNING