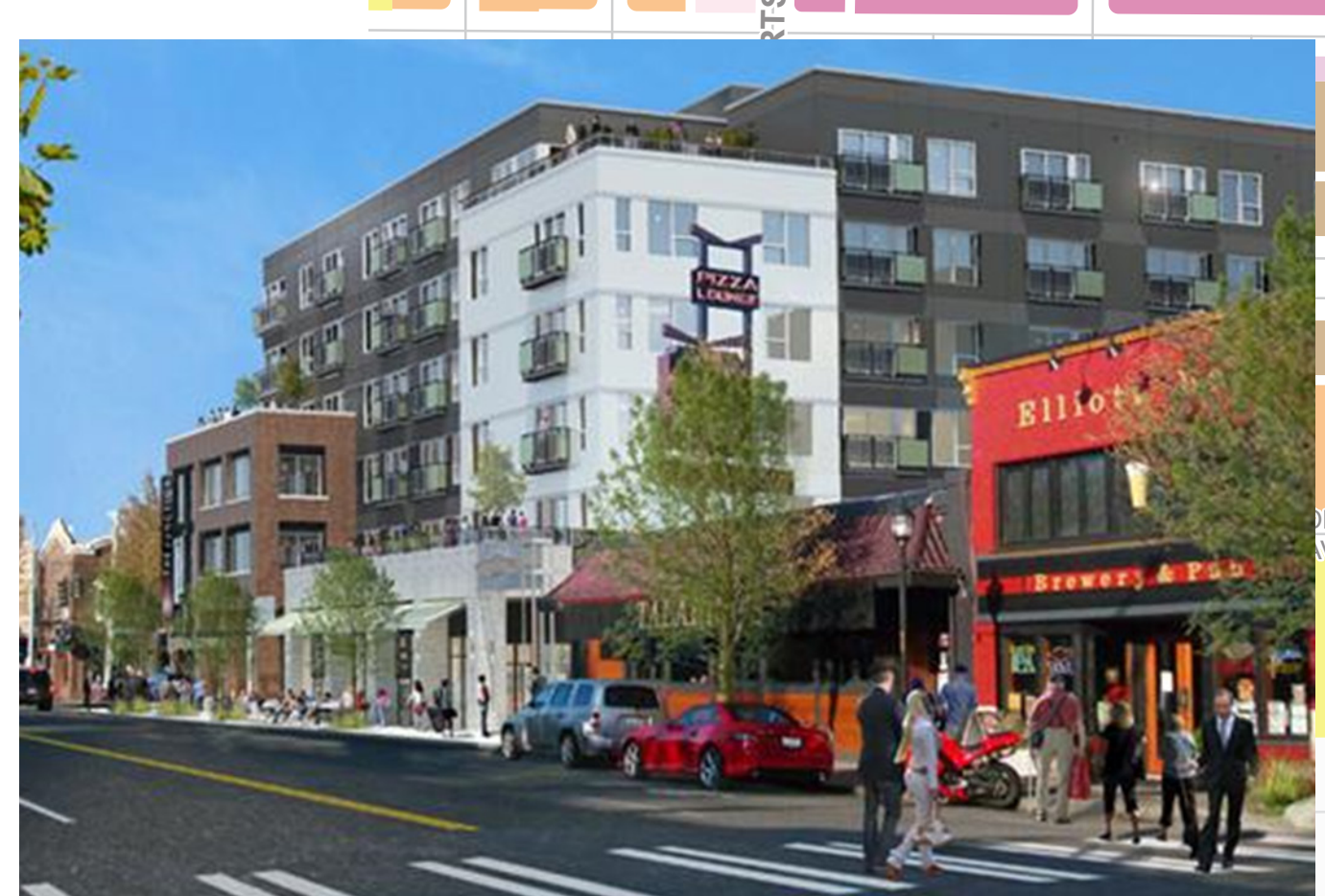


Purple Line Transit Neighborhood Plan Corridor Vision



Urban Main Streets
Vision: Walkable Streets With a Mix of Uses

Pedestrian-friendly areas with small shops that serve adjacent neighborhoods and connect them to transit, while allowing some opportunities for more mixed-use development. These areas benefit from increased services and improved mobility and connections to Downtown and the Westside.



Wilshire Corridor & Major Intersections
Vision: Regional Cultural and Office Hub

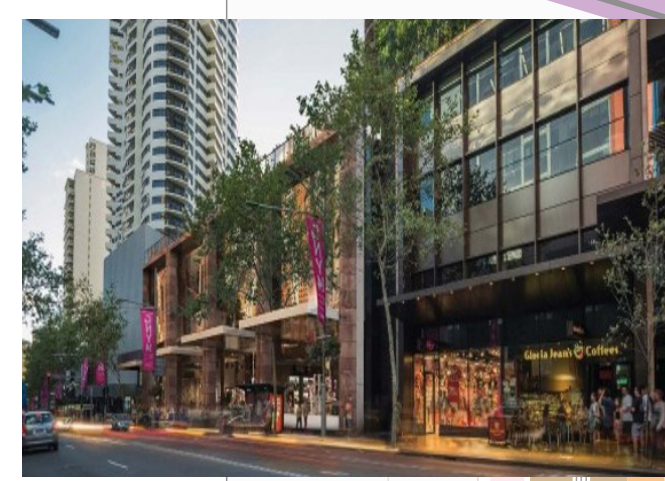
Vibrant 24/7 activity and a fine grain of visitor-serving uses throughout the corridor, with high-quality and sustainable building design. Facilitate a compact mix of jobs and housing that complements existing uses and supports transit ridership. Enhance the regional center while promoting walkability and respecting the historic built environment by incorporating Miracle Mile Community Design Overlay regulations.

Neighborhoods
Vision: Compatibility With Unique Residential Areas

Use character and scale regulations to respect historically significant neighborhoods with a high percentage of rent-stabilized apartments. Consider additional density while ensuring compatibility through regulations that require new developments to be consistent with the existing pattern of development, massing, and prominent architectural features.



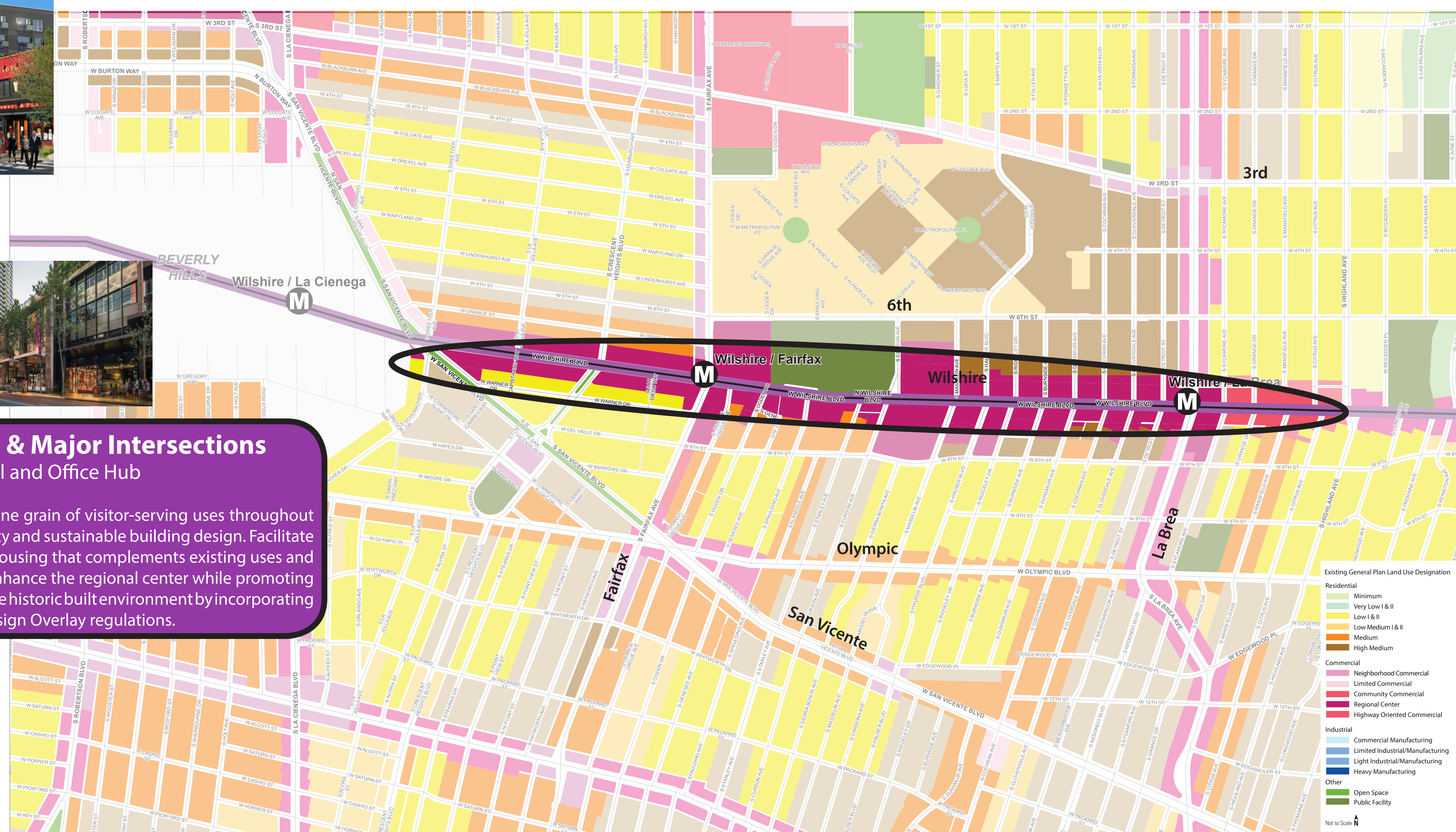
Purple Line Transit Neighborhood Plan Corridor Vision



Wilshire Corridor & Major Intersections

Vision: Regional Cultural and Office Hub

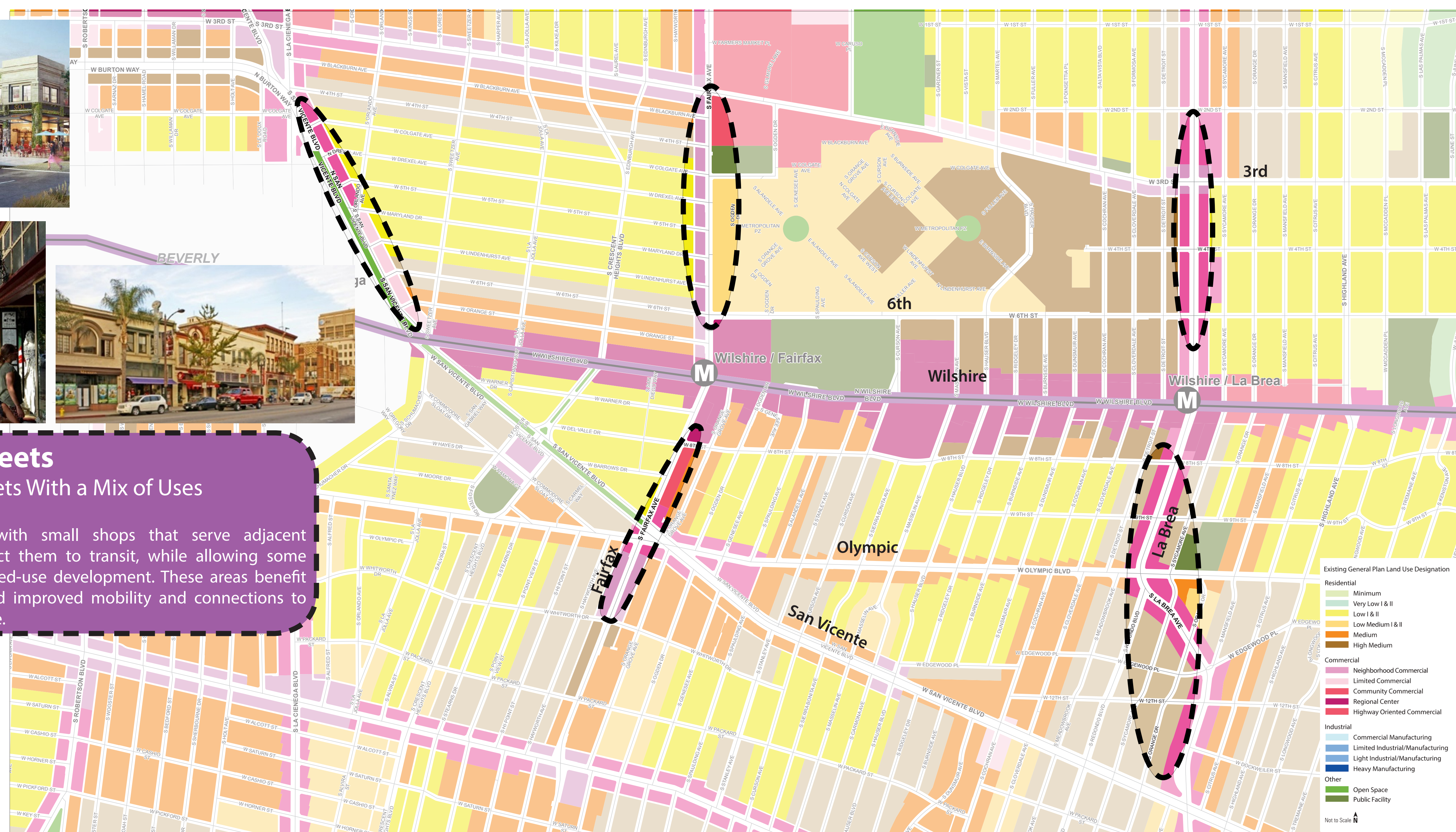
Vibrant 24/7 activity and a fine grain of visitor-serving uses throughout the corridor, with high-quality and sustainable building design. Facilitate a compact mix of jobs and housing that complements existing uses and supports transit ridership. Enhance the regional center while promoting walkability and respecting the historic built environment by incorporating Miracle Mile Community Design Overlay regulations.



Urban Main Streets

Vision: Walkable Streets With a Mix of Uses

Pedestrian-friendly areas with small shops that serve adjacent neighborhoods and connect them to transit, while allowing some opportunities for more mixed-use development. These areas benefit from increased services and improved mobility and connections to Downtown and the Westside.



Neighborhoods

Vision: Compatibility With Unique Residential Areas

Use character and scale regulations to respect historically significant neighborhoods with a high percentage of rent-stabilized apartments. Consider additional density while ensuring compatibility through regulations that require new developments to be consistent with the existing pattern of development, massing, and prominent architectural features.

