

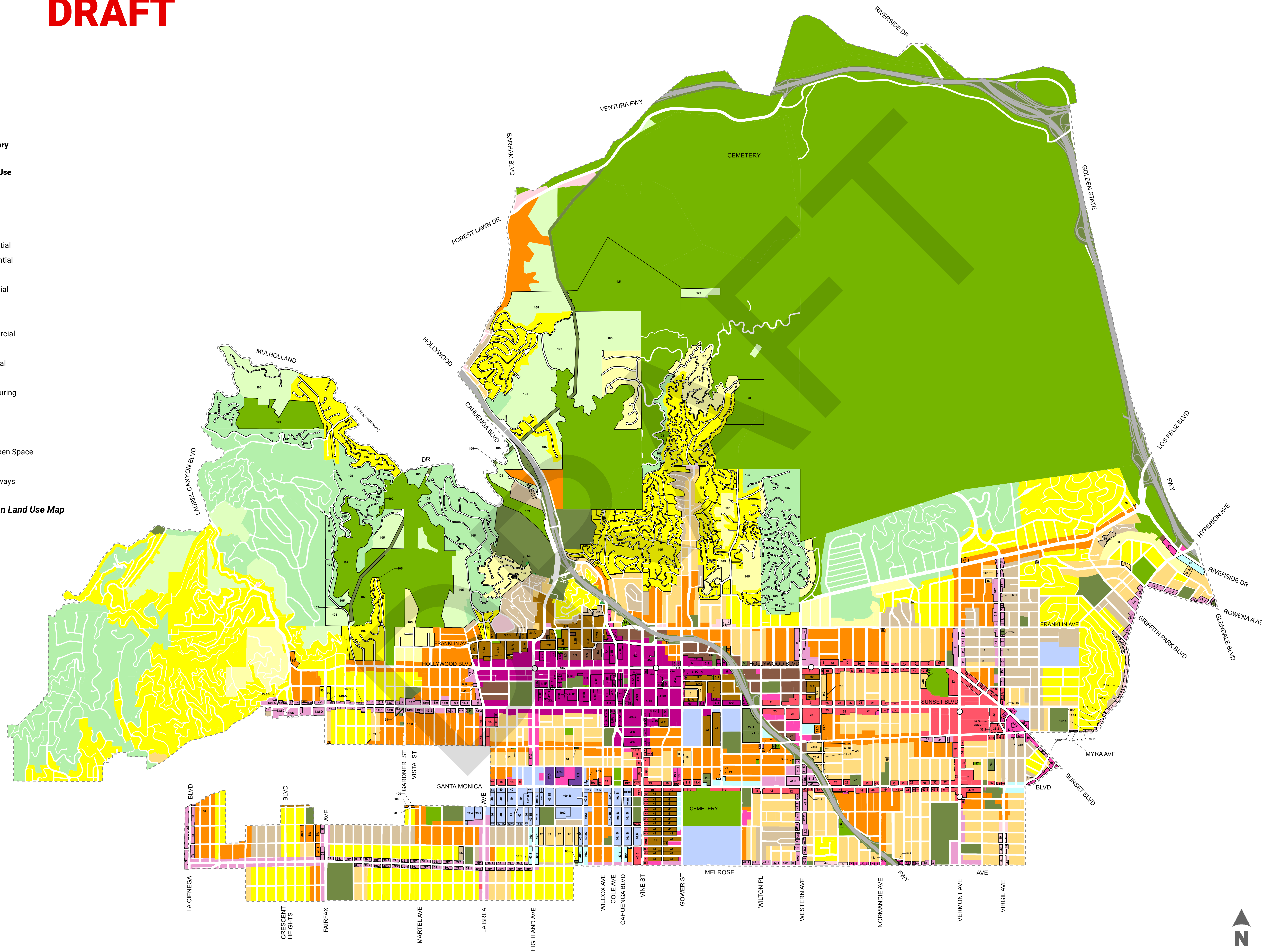
Hollywood Community Plan Update

Proposed Land Use Map

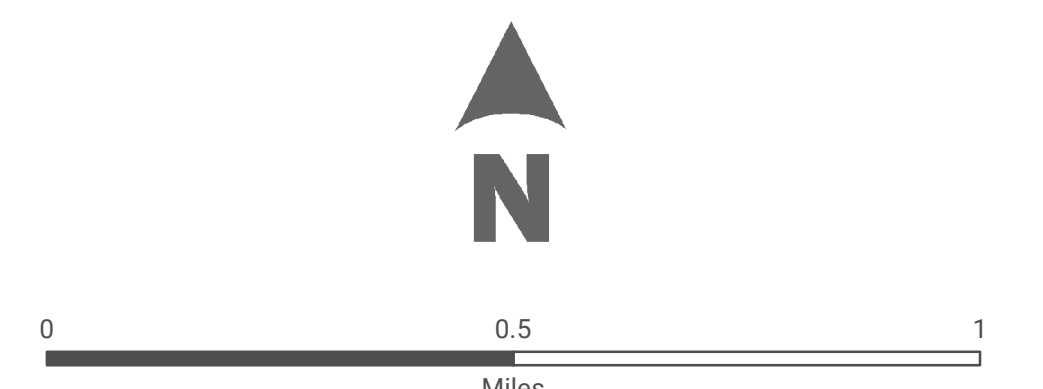
DRAFT

- Subareas**
-
- Metro Rail Station**
-
- Community Plan Area Boundary**
- - -
- Proposed General Plan Land Use**
- Minimum Residential
 - Very Low II Residential
 - Low I Residential
 - Low II Residential
 - Low Medium I Residential
 - Low Medium II Residential
 - Medium Residential
 - High Medium Residential
 - High Residential
 - Limited Commercial
 - Neighborhood Commercial
 - General Commercial
 - Community Commercial
 - Regional Center
 - Commercial Manufacturing
 - Limited Industrial
 - Hybrid Industrial
 - Public Facilities
 - Public/Quasi-Public Open Space
 - Open Space
 - Public Facilities - Freeways

Not Part of the General Plan Land Use Map



Disclaimer: The City of Los Angeles is neither responsible nor liable for any inaccuracies, errors, or omissions with respect to the map or information contained on this map. This map and all materials contained on it are distributed and transmitted "as is" without warranties of any kind, either expressed or implied, including without limitation, warranties of title or implied warranties of merchantability or fitness. For a particular purpose. The City of Los Angeles is not responsible for any special, indirect, incidental, or consequential damages that may arise from the use of, or the inability to use, the map and/or the materials contained on the map, whether the materials contained on the map are provided by the City of Los Angeles, or a third party.



Data Source: Department of City Planning
Date: October 2020