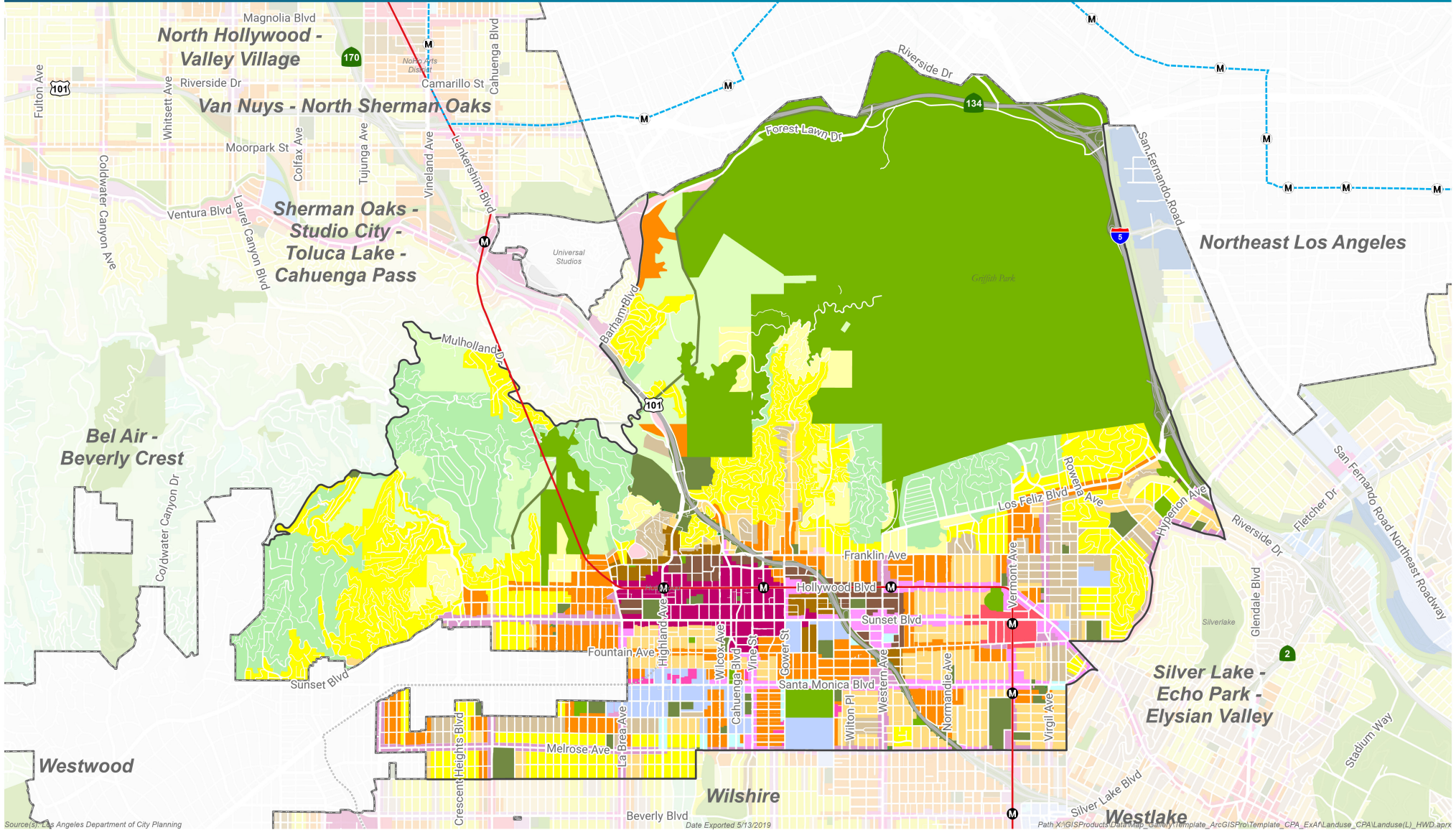


# General Plan Land Use

## Hollywood Community Plan Area



Source: Los Angeles Department of City Planning

Date Exported: 5/13/2019

Path: X:\GIS\Products\Info\Map\_Summary\Template\_ArcGISPro\Template\_CPA\_EXA\Landuse\_CPA\Landuse(L)\_HWD.aprx

- |  |               |  |                      |  |                                |  |                                |
|--|---------------|--|----------------------|--|--------------------------------|--|--------------------------------|
|  | Minimum       |  | Medium               |  | Neighborhood Commercial        |  | Open Space                     |
|  | Very Low II   |  | High Medium          |  | Neighborhood Office Commercial |  | Public/Quasi-Public Open Space |
|  | Low I         |  | High                 |  | Regional Center Commercial     |  | Public Facilities              |
|  | Low II        |  | Limited Commercial   |  | Highway Oriented Commercial    |  | Public Facilities - Freeways   |
|  | Low Medium I  |  | General Commercial   |  | Commercial Manufacturing       |  | Community Plan Boundary        |
|  | Low Medium II |  | Community Commercial |  | Limited Manufacturing          |  | City Boundary                  |

