

State of California The Resources Agency
DEPARTMENT OF PARKS AND RECREATION
PRIMARY RECORD

Primary # _____
HRI # _____
Trinomial _____
NRHP Status Code 1D

Other Listings _____
Review Code _____ Reviewer _____ Date _____

Page 1 of 6 *Resource Name or #: (Assigned by recorder) 52nd Place Historic District

P1. Other Identifier: _____

*P2. Location: Not for Publication Unrestricted

*a. County Los Angeles and (P2c, P2e, and P2b or P2d. Attach a Location Map as necessary.)

*b. USGS 7.5' Quad _____ Date _____ T ____; R ____; ____ of ____ of Sec ____; ____ B.M.

c. Address _____ City Los Angeles Zip _____

d. UTM: (Give more than one for large and/or linear resources) Zone __, __ mE/ __ mN

e. Other Locational Data: (e.g., parcel #, directions to resource, elevation, etc., as appropriate)

Tifal Brothers 52nd Place Tract, except for lots 1-10.

*P3a. Description: (Describe resource and its major elements. Include design, materials, condition, alterations, size, setting, and boundaries)

*P3b. Resource Attributes: (List attributes and codes) HP2-Single Family Property, HP36-Ethnic Minority Prop.

*P4. Resources Present: Building Structure Object Site District Element of District Other (Isolates, etc.)

P5b. Description of Photo: (view, date, accession #) January 2009

Looking west

*P6. Date Constructed/Age and

Source: Historic Prehistoric

Both

1911-23 Tax Assessor

*P7. Owner and Address:

*P8. Recorded by: (Name, affiliation,

and address) Teresa Grimes and

Christina Chiang; CAJA

523 W. 6th Street, Suite 1134

Los Angeles, CA 90014

*P9. Date Recorded: 1/5/09

*P10. Survey Type: (Describe)

Intensive

*P11. Report Citation: (Cite survey report and other sources, or enter "none.") 52nd Place Historic Resource Survey

*Attachments: NONE Location Map Continuation Sheet Building, Structure, and Object Record

Archaeological Record District Record Linear Feature Record Milling Station Record Rock Art Record

Artifact Record Photograph Record Other (List): _____

*Resource Name or # (Assigned by recorder) 52nd Place Historic District

D1. Historic Name: Tifal Brothers Tract D2. Common Name: None

*D3. **Detailed Description** (Discuss overall coherence of the district, its setting, visual characteristics, and minor features. List all elements of district.):

The 52nd Place Historic District is located in the City of Los Angeles between McKinley Avenue on the east and Avalon Boulevard on the west. It is a flat, linear block with an east-west orientation. The properties on the street were part of a single tract of single-family residences that were conceived, designed, and built by the Tifal Brothers. All of the houses were constructed between 1911 and 1914, are wood-framed structures one-story in height, Craftsman in style, and have a common setback. Common features include low-pitched gabled roofs with overhanging eaves and exposed rafter tails, front porches and chimneys made of brick or river rock, and multi-paned wood-framed casement windows. The district has a strong consistency in character and retains a high level of physical integrity. There are 39 contributing and 13 non-contributing buildings. Some of the properties have detached garages at the rear of the lots. Mature street trees are present, but they are sporadic and various species are represented.

*D4. **Boundary Description** (Describe limits of district and attach map showing boundary and district elements.):

The Tifal Brothers 52nd Place Tract. See attached map.

*D5. **Boundary Justification:**

The district is united by development history and architectural style. The district includes all of the lots associated with the Tifal Brothers 52nd Place Tract, except for 1-10. Lots 1-10 are occupied by commercial buildings facing Avalon Boulevard and are separated from the rest of the tract by an alley.

D6. **Significance: Theme** Ethnic History and Architecture **Area** Los Angeles
Period of Significance 1911-1958 **Applicable Criteria** A & C
(Discuss district's importance in terms of its historical context as defined by theme, period of significance, and geographic scope. Also address the integrity of the district as a whole.)

The 52nd Place Historic District is eligible for listing in the National Register under Criterion A as it is associated with events that have made a significant contribution to the broad patterns of our history. It meets the registration requirements for residential districts outlined in the Multiple Property Documentation (MPD) Form for Historic Resources Associated with African Americans in Los Angeles. It is significant at the local level in the context of the settlement patterns of the African American community. The district is also eligible for designation as a Los Angeles Historic Preservation Overlay Zone (HPOZ). It is significant in the context of Architecture, Engineering and Designed Landscapes in the theme of the Arts and Crafts Movement. It is a fine collection of Craftsman bungalows. It is one of the few neighborhoods along the Central Avenue corridor to retain sufficient integrity for listing in the National Register or as an HPOZ. The boundaries of the proposed National Register Historic District are slightly smaller than those for the HPOZ.

*D7. **References** (Give full citations including the names and addresses of any informants, where possible.):

Multiple Property Documentation Form, Historic Resources Associated with African Americans in Los Angeles, 2008.
National Register of Historic Places Registration Form, 52nd Place Historic District, 2009.
SurveyLA, Historic Context Statement, 2009.
See Continuation Sheet.

*D8. **Evaluator:** Teresa Grimes **Date:** 1/5/09
Affiliation and Address: CAJA, 523 W. 6th Street, Suite 1134, LA 90014

Page 3 of 6

*Resource Name or # (Assigned by recorder) 52nd Place Historic District

*Recorded by: Teresa Grimes

*Date 1/5/09

Continuation Update

Significance Continued

One of the most powerful factors that first attracted African Americans to Los Angeles was the possibility of homeownership. Los Angeles had one of the highest rates of homeownership of any major American city. In 1910, 40 percent of African Americans in Los Angeles County owned their homes. By the 1920s, however, racially restrictive housing covenants designed to protect and maintain white neighborhoods were commonplace, thereby creating all white and racially mixed neighborhoods. This phenomenon was very different from East Coast and Midwestern cities that created ethnic ghettos by confining blacks and other minorities to their own particular neighborhoods. It was not until the Supreme Court ruled against restrictive housing covenants in 1948 that non-whites could purchase homes in the other neighborhoods, although it took another decade for the racial geography of Los Angeles to change.

The 52nd Place Historic District reflects the settlement patterns of the African American population. The 1920 census data reveals that 52nd Place was an exclusively white working-class neighborhood. While most of the residents were native-born Americans, many were German, Russian, and Irish. The 1930s census data documents that the neighborhood was racially mixed with African Americans representing the majority of the residents, which also included Mexican Americans and whites. Many of the male heads of household worked for the railroad. The changing demographics of the district reflect the growth of the African American population during the 1920s, and its movement south along the Central Avenue corridor during the 1930s. During the teens the hub of the community was Central Avenue between 8th and 12th Streets. During the early 1920s it shifted south of 20th Street: the Lincoln Theater was located at 23rd Street, the Second Baptist Church at 24th, and the YMCA at 28th. By 1928, the center of the community moved further south to Central Avenue and 41st Street with the opening of the Sommerville Hotel and several other businesses and institutions. As the houses in the area were not subject to racially restrictive covenants, blacks were able to purchase homes near this commercial corridor, which they simply called "the Avenue."

The 52nd Place Historic District is unique in that it was home to several persons of historic significance. Early black residents of the neighborhood included Ivie Anderson, Joseph and Charlotta Bass, and Gilbert Lindsay. Ivie Anderson lived at 724 E. 52nd Place from 1930 until 1945. Anderson was the first African American singer to join a black band on a permanent basis. Black bands had regularly backed singers, but the singers were not part of the organization. She began her singing career in the early 1920s and performed with the likes of Curtis Mosby, Paul Howard, and Sonny Clay. In 1931 she was asked to join Duke Ellington's orchestra for a fourteen-week tour, but she remained with the organization until 1942. Among her performances on important records are It Don't Mean A Thing If It Ain't Got that Swing (1932), Stormy Weather (1933), and I Got It Bad and That Ain't Good (1941). She also appeared as a singer in films such as A Day at the Races (1937) and the Hit Parade (1937). Chronic asthma forced her to retire from touring, but she continued singing in local nightclubs. Afterward, she concentrated her efforts on her restaurant and then on real estate. She opened Ivie's Chicken Shack at Central and Vernon Avenues in 1941. It was not a flimsy business suggested by the name, but rather a popular neighborhood restaurant that remained until 1957.

During the 1930s, Joseph and Charlotta Bass lived at 697 E. 52nd Place. They were community leaders, civil rights activists, and journalists. Charlotta Bass owned and operated the California Eagle from 1912 until 1951. At its height, the Eagle had a circulation of 60,000, making it the largest African American newspaper on the West Coast. In 1913, she met Joseph Bass who would eventually become editor of the Eagle and her husband. She was particularly active against restrictive covenants in housing and segregated schools. She also campaigned heavily against job discrimination and was an advocate of the "Don't Buy Where You Can't Work" campaign in the 1930s. Joseph Bass

Page 4 of 6 *Resource Name or # (Assigned by recorder) 52nd Place Historic District
*Recorded by: Teresa Grimes *Date 1/5/09
 Continuation Update

Significance Continued

was teacher for seven years in his hometown of Jefferson, Missouri before leaving in 1894 for a newspaper job in Topeka. In addition to Topeka, Joseph worked for newspapers in Helena, Montana and San Francisco before finally settling in Los Angeles in 1913. He worked as a general newspaperman for Charlotta, at the California Eagle. Bass was promoted to editor and married his boss in 1914.

Gilbert Lindsay lived at 774 E. 52nd Place during the 1970s and 80s. During the 1940s, Lindsay was the manager/owner of Bilbrew and Lindsay Productions, which produced the pioneering broadcasts of the "Bronze Hour" on KGFJ Radio. The program's announcer, Mrs. A.C. Bilbrew was prominent in Los Angeles choral music circles. In 1952, Lindsay joined the campaign of Kenneth Hahn for Los Angeles County Supervisor, and joined his staff after Hahn was elected. In 1962, Lindsay became the first African American to serve on the Los Angeles City Council in the modern era. His connection to Hahn led to his appointment to fill a vacancy left on the City Council when Edward Roybal was elected to Congress. Just a few months later, Lindsay was joined on the City Council by Tom Bradley and Billy G. Mills, bringing the total number of African American members to three. Lindsay held the post until his death at age 90. His house is designated Los Angeles Historic-Cultural Monument #726.

The 52nd Place Historic District is architecturally significant as an important and relatively intact neighborhood of Craftsman bungalows. It was developed by the Tifal Brothers between 1911 and 1914, with the vast majority of the houses constructed in 1911. The Tifal Brothers, Charles, Gustav, and William were immigrants from Posen, Germany. They constructed over 350 bungalows in Los Angeles and another 100 in Monrovia where they were based, and where their work is most celebrated.

The Craftsman style dates from the early 20th century through the end of the Arts and Crafts era. Examples of Craftsman bungalows in Los Angeles date from approximately 1900 to 1930. The Craftsman style of architecture can be traced back to the English Arts of Crafts movement, which began with William Morris who adopted and lived his life based on the philosophies set forth by John Ruskin and Thomas Carlyle. Morris' concern for beauty and quality led him to form a community of artisans who produced design objects that were crafted based on the system of medieval values and design. The American Arts and Crafts movement grew out of the Progressive movement. The guiding principle was simplicity and a move away from conspicuous consumption. The movement revered nature and drew upon natural elements and form to inspire decorative motifs. The most obvious manifestation of the Arts and Crafts movement was the Craftsman bungalow. They generally have wood clapboard or shingle exteriors and are defined by their horizontality with broad front porches, often composed of stone, clinker brick, or stuccoed porch piers. Other character-defining features include low pitched front-facing gabled roofs, and overhanging eaves with exposed rafter tails.

The Craftsman bungalow became an extremely popular form of housing in Southern California, as it did elsewhere in the country where communities required modern, affordable, easily constructed housing. The form was proliferated through the publication of pattern books, which provided building plans and elevations and catalogs, which offered "mail order" product dwellings. A large number of bungalows were credited to builders. Developers and contractors often hired young architects who had not yet established practices of their own. Then there were builders without architectural training, but a natural talent for design. Charles Tifal falls into this category. He was the youngest of the Tifal Brothers and was the designer for the firm. He later partnered with Ralph Hurlburt and continued his career in San Diego where he worked in a range of styles.

Page 5 of 6

*Resource Name or # (Assigned by recorder) 52nd Place Historic District

*Recorded by: Teresa Grimes

*Date 5/11/09

Continuation Update

Significance Continued

In the case of the 52nd Place tract, the Tifal Brothers also acted as developers. All of the houses on the street were built on a speculative basis for approximately \$2,000 a piece. The contributing houses well represent the design, craftsmanship, and materials that characterize the tenets of the Craftsman movement. They are all one-story in height and sheathed in either wood shingles or clapboard. Low-pitched gabled roofs cover the houses. They are invariably characterized by overhanging eaves with exposed rafter tails. Most of the houses feature front porches, although some of have been enclosed. Arroyo stone, clinker brick, and stucco are used for the construction of porch piers and chimneys. Wood sash and casement windows are found throughout the district. Although some of the original windows have been replaced, the openings and trim are usually intact. In 2008, three original houses in the district were replaced by two-story duplexes. But as a whole, the district still possesses integrity.

Contributing, Altered Contributing, and Non-Contributing Elements

The buildings were finally assessed as contributing (no detectable alterations), altered contributing, or non-contributing (heavily altered, outside period of significance, etc.). Each assessment has been reviewed by the qualified architectural historians at CAJA, Department of City Planning, and the Office of Historic Resources. In cases in which the assessment was questioned, adjustments have been made wherever appropriate. Throughout the entire survey process, the intent was to determine as accurately as possible the level of integrity of any given building.

Buildings with no apparent alterations and constructed during the period of significance were evaluated as contributing elements. Buildings with minor alterations such as the addition of security doors, window bars, and fences were also evaluated as contributing elements.

Buildings with reversible alterations and buildings that are altered but still convey their historic architectural style were evaluated as altered contributing in the 52nd Place Historic Resources Survey. Examples of reversible alterations include the enclosure of porches and the replacement of windows. Porches, which have been enclosed without damaging the original porch floor and columns can be restored. Original windows can be restored so long as the placement and size remain in tact and original frames remain. In most cases, when original wood cladding was sheathed in stucco, the buildings were evaluated as non-contributing elements. However, when stuccoing was the only alteration and when the buildings retained significant character-defining features of the Craftsman style, they were evaluated as altered contributing.

Buildings constructed after the period of significance for the historic district and buildings with substantial and irreversible alterations were evaluated as non-contributing elements.

Careful and consistent application of the stated criteria for determining contributor status reveals that 52nd Place has retained a high degree of integrity. Of the 52 subject properties 39, or 75% are considered contributors to the HPOZ, and 13 are considered non-contributors. Of the 39 contributors, 10 are considered altered contributors because they have sustained alterations. Of the 13 non-contributors, three are recently constructed two-story duplexes. Compared with other neighborhoods in the South Los Angeles Community Plan Area, this represents a high degree of integrity.

Page 6 of 6 *Resource Name or # (Assigned by recorder) 52nd Place Historic District
*Recorded by: Teresa Grimes *Date 1/5/09
 Continuation Update

References

Sanborn Maps were used to confirm the presence of garages on the rear of the lots and changes in building footprints.

Dates of construction were based upon the Los Angeles County Tax Assessor Records, and are noted with each building description. These records were also used to obtain the names of the original and subsequent owners.

Building permit research was conducted on selected properties to confirm the original builders and determined dates of major alterations.

Deed research was conducted on randomly selected properties to determine whether or not they include racially restrictive covenants.

"Avenues, Arts & Architecture of South Central Los Angeles," a walking tour brochure produced by the Los Angeles Conservancy, 1993.

State of California The Resources Agency
DEPARTMENT OF PARKS AND RECREATION
PRIMARY RECORD

Primary # _____
HRI # _____
Trinomial _____
NRHP Status Code 1D

Other Listings _____
Review Code _____ Reviewer _____ Date _____

Page 1 of 1 *Resource Name or #: (Assigned by recorder) 52nd Place Historic District

P1. Other Identifier: _____

*P2. Location: Not for Publication Unrestricted

*a. County Los Angeles and (P2c, P2e, and P2b or P2d. Attach a Location Map as necessary.)

*b. USGS 7.5' Quad _____ Date _____ T _____; R _____; _____ of _____ of Sec _____; _____ B.M.

c. Address 623 E. 52nd Place City Los Angeles Zip 90011

d. UTM: (Give more than one for large and/or linear resources) Zone _____, _____ mE/ _____ mN

e. Other Locational Data: (e.g., parcel #, directions to resource, elevation, etc., as appropriate)

APN # 5103-004-016

*P3a. Description: (Describe resource and its major elements. Include design, materials, condition, alterations, size, setting, and boundaries)

This one-story bungalow has a low-pitched roof with a shallow cross-gabled front. Splayed brackets support the open porch, with a even lower-pitched, extended roof. At the top of the street-facing (south) gable is a picket fence vertical slat vent. The porch roof extends past the main house on the western end and into the cross-gabled front on the eastern end. The chimney on the western wall is made of river rock. A few stairs lead to a central door with a window next to it. The cross-gabled front (south) also has one window. The shingle siding has been stuccoed over and some exposed rafters on the cross gable shortened. Other alterations include a stone and metal wall and a tile walkway. ALTERED-CONTRIBUTING

*P3b. Resource Attributes: (List attributes and codes) HP2-Single Family Property

*P4. Resources Present: Building Structure Object Site District Element of District Other (Isolates, etc.)



P5b. Description of Photo: (view, date, accession #) June 2008
south elevation

*P6. Date Constructed/Age and

Source: Historic Prehistoric
 Both

1911/11 Tax Assessor

*P7. Owner and Address:

Maria Santiago
623 E. 52nd Pl.
LA 90011

*P8. Recorded by: (Name, affiliation, and address) Teresa Grimes and

Christina Chiang; CAJA
523 W. 6th Street, Suite 1134
Los Angeles, CA 90014

*P9. Date Recorded: 1/5/09, 8/6/14
updt'd by Shannon Ryan DCP

*P10. Survey Type: (Describe)
Intensive

*P11. Report Citation: (Cite survey report and other sources, or enter "none.") 52nd Place Historic Resource Survey

*Attachments: NONE Location Map Continuation Sheet Building, Structure, and Object Record
 Archaeological Record District Record Linear Feature Record Milling Station Record Rock Art Record
 Artifact Record Photograph Record Other (List): _____

State of California The Resources Agency
DEPARTMENT OF PARKS AND RECREATION
PRIMARY RECORD

Primary # _____
HRI # _____
Trinomial _____
NRHP Status Code 1D

Other Listings _____
Review Code _____ Reviewer _____ Date _____

Page 1 of 1 *Resource Name or #: (Assigned by recorder) 52nd Place Historic District

P1. Other Identifier: _____

*P2. Location: Not for Publication Unrestricted

*a. County Los Angeles and (P2c, P2e, and P2b or P2d. Attach a Location Map as necessary.)

*b. USGS 7.5' Quad _____ Date _____ T _____; R _____; _____ of _____ of Sec _____; _____ B.M.

c. Address 626 E. 52nd Place City Los Angeles Zip 90011

d. UTM: (Give more than one for large and/or linear resources) Zone _____, _____ mE/ _____ mN

e. Other Locational Data: (e.g., parcel #, directions to resource, elevation, etc., as appropriate)

APN #5103-005-004

*P3a. Description: (Describe resource and its major elements. Include design, materials, condition, alterations, size, setting, and boundaries)

This bungalow has been altered with stucco and window replacements, however original design features, such as battered piers, vertical slat vent, and double front gables, are maintained.

ALTERED-CONTRIBUTING

*P3b. Resource Attributes: (List attributes and codes) HP2-Single Family Property

*P4. Resources Present: Building Structure Object Site District Element of District Other (Isolates, etc.)



P5b. Description of Photo: (view, date, accession #) June 2008
north elevation

*P6. Date Constructed/Age and

Source: Historic Prehistoric
 Both

1911/19 Tax Assessor

*P7. Owner and Address:

Victor de la Cruz
626 E. 52nd Pl.
LA 90011

*P8. Recorded by: (Name, affiliation, and address) Teresa Grimes and

Christina Chiang; CAJA
523 W. 6th Street, 1134
Los Angeles, CA 90014

*P9. Date Recorded: 1/5/09, 8/6/
14 updt'd by Shannon Ryan DCP

*P10. Survey Type: (Describe)
Intensive

*P11. Report Citation: (Cite survey report and other sources, or enter "none.") 52nd Place Historic Resource Survey

*Attachments: NONE Location Map Continuation Sheet Building, Structure, and Object Record

Archaeological Record District Record Linear Feature Record Milling Station Record Rock Art Record

Artifact Record Photograph Record Other (List): _____

State of California The Resources Agency
DEPARTMENT OF PARKS AND RECREATION
PRIMARY RECORD

Primary # _____
HRI # _____
Trinomial _____
NRHP Status Code 1D

Other Listings _____
Review Code _____ Reviewer _____ Date _____

Page 1 of 1 *Resource Name or #: (Assigned by recorder) 52nd Place Historic District

P1. Other Identifier: _____

*P2. Location: Not for Publication Unrestricted

*a. County Los Angeles and (P2c, P2e, and P2b or P2d. Attach a Location Map as necessary.)

*b. USGS 7.5' Quad _____ Date _____ T _____; R _____; _____ of _____ of Sec _____; _____ B.M.

c. Address 631 E. 52nd Place City Los Angeles Zip 90011

d. UTM: (Give more than one for large and/or linear resources) Zone _____, _____ mE/ _____ mN

e. Other Locational Data: (e.g., parcel #, directions to resource, elevation, etc., as appropriate)

APN #5103-004-015

*P3a. Description: (Describe resource and its major elements. Include design, materials, condition, alterations, size, setting, and boundaries)

This cross-gabled bungalow with battered piers has been stuccoed over, but the overall form of the structure has been maintained.

ALTERED-CONTRIBUTING

*P3b. Resource Attributes: (List attributes and codes) HP2-Single Family Property

*P4. Resources Present: Building Structure Object Site District Element of District Other (Isolates, etc.)

P5b. Description of Photo: (view, date, accession #) June 2008
south elevation

*P6. Date Constructed/Age and

Source: Historic Prehistoric
 Both

1911/23 Tax Assessor

*P7. Owner and Address:

Mateo Sandoval
631 E. 52nd Pl.
LA 90011

*P8. Recorded by: (Name, affiliation, and address) Teresa Grimes

Christina Chiang; CAJA
523 W. 6th Street, Suite 1134
Los Angeles, CA 90014

*P9. Date Recorded: 1/5/09, 8/6/14
updt'd by Shannon Ryan DCP

*P10. Survey Type: (Describe)
Intensive

*P11. Report Citation: (Cite survey report and other sources, or enter "none.") 52nd Place Historic Resource Survey

*Attachments: NONE Location Map Continuation Sheet Building, Structure, and Object Record
 Archaeological Record District Record Linear Feature Record Milling Station Record Rock Art Record
 Artifact Record Photograph Record Other (List): _____

State of California The Resources Agency
DEPARTMENT OF PARKS AND RECREATION
PRIMARY RECORD

Primary # _____
HRI # _____
Trinomial _____
NRHP Status Code 5S2

Other Listings _____
Review Code _____ Reviewer _____ Date _____

Page 1 of 1 *Resource Name or #: (Assigned by recorder) 52nd Place Historic District

P1. Other Identifier: _____

*P2. Location: Not for Publication Unrestricted

*a. County Los Angeles and (P2c, P2e, and P2b or P2d. Attach a Location Map as necessary.)

*b. USGS 7.5' Quad _____ Date _____ T _____; R _____; _____ of _____ of Sec _____; _____ B.M.

c. Address 634 E. 52nd Place City Los Angeles Zip 90011

d. UTM: (Give more than one for large and/or linear resources) Zone _____, _____ mE/ _____ mN

e. Other Locational Data: (e.g., parcel #, directions to resource, elevation, etc., as appropriate)

APN #5103-005-005

*P3a. Description: (Describe resource and its major elements. Include design, materials, condition, alterations, size, setting, and boundaries)

This cross-gabled, one-story bungalow has an exterior River rock chimney on the north gable wall between two windows. The concrete walkway and steps lead to the porch, which entrance to the west. The porch supports on the east gable are river rock pedestals with flared caps and wood posts. A low wall made of identical materials connects the pedestals. The east gable has a tie beam, extended roof beams and exposed rafter tails. The east wall has three different small windows. The doors, window and door frame are all replaced. The window frames and the exterior walls have been stuccoed. In a cement rectangular block that matches the sidewalk, the driveway on the east side of the house is in two rows for the car tires. ALTERED CONTRIBUTING

*P3b. Resource Attributes: (List attributes and codes) HP2-Single Family Property

*P4. Resources Present: Building Structure Object Site District Element of District Other (Isolates, etc.)

P5b. Description of Photo: (view, date, accession #) June 2008

north elevation

*P6. Date Constructed/Age and

Source: Historic Prehistoric

Both

1911/19 Tax Assessor

*P7. Owner and Address:

Eduardo Partida

634 E. 52nd Pl.

LA 90011

*P8. Recorded by: (Name, affiliation,

and address) Teresa Grimes and

Christina Chiang; CAJA

523 W. 6th Street, Suite 1134

Los Angeles, CA 90014

*P9. Date Recorded: 1/5/09

*P10. Survey Type: (Describe)

Intensive

*P11. Report Citation: (Cite survey report and other sources, or enter "none.") 52nd Place Historic Resource Survey

*Attachments: NONE Location Map Continuation Sheet Building, Structure, and Object Record

Archaeological Record District Record Linear Feature Record Milling Station Record Rock Art Record

Artifact Record Photograph Record Other (List): _____

State of California The Resources Agency
 DEPARTMENT OF PARKS AND RECREATION
PRIMARY RECORD

Primary # _____
 HRI # _____
 Trinomial _____
 NRHP Status Code 1D

Other Listings _____
 Review Code _____ Reviewer _____ Date _____

Page 1 of 1 *Resource Name or #: (Assigned by recorder) 52nd Place Historic District

P1. Other Identifier: _____

*P2. Location: Not for Publication Unrestricted

*a. County Los Angeles County and (P2c, P2e, and P2b or P2d. Attach a Location Map as necessary.)

*b. USGS 7.5' Quad _____ Date _____ T _____; R _____; _____ of _____ of Sec _____; _____ B.M.

c. Address 639 E. 52nd Place City Los Angeles Zip 90011

d. UTM: (Give more than one for large and/or linear resources) Zone _____, _____ mE/ _____ mN

e. Other Locational Data: (e.g., parcel #, directions to resource, elevation, etc., as appropriate)

APN # 5103-004-014

*P3a. Description: (Describe resource and its major elements. Include design, materials, condition, alterations, size, setting, and boundaries)

This one-story bungalow is very simple in plan and design. It is sheathed with long wood shingles and covered by a front-facing gabled roof. The primary (south) façade is symmetrically organized. A lower front-gabled roof projects over the porch. Both roofs have a low pitch, overhanging eaves, and exposed rafter tails. Centered under the porch is the main entrance flanked by long, fixed single-paned windows topped by divided transoms. The low-stuccoed porch wall is trimmed with bricks. The porch supports appear to have been replaced. There is a stuccoed chimney on the western elevation.

CONTRIBUTING

*P3b. Resource Attributes: (List attributes and codes) HP2 - Single Family Property

*P4. Resources Present: Building Structure Object Site District Element of District Other (Isolates, etc.)



P5b. Description of Photo: (view, date, accession #) June 2008
South elevation

*P6. Date Constructed/Age and

Source: Historic Prehistoric
 Both

1911/19 Tax Assessor

*P7. Owner and Address:

Lee Joseph
4014 W. Adams Blvd.
LA 90018

*P8. Recorded by: (Name, affiliation, and address) Teresa Grimes and

Christina Chiang; CAJA
523 W. 6th Street, Suite 1134
Los Angeles, CA 90014

*P9. Date Recorded: 1/5/09

*P10. Survey Type: (Describe)
Intensive

*P11. Report Citation: (Cite survey report and other sources, or enter "none.") 52nd Place Historic Resource Survey

*Attachments: NONE Location Map Continuation Sheet Building, Structure, and Object Record
 Archaeological Record District Record Linear Feature Record Milling Station Record Rock Art Record
 Artifact Record Photograph Record Other (List): _____

State of California The Resources Agency
DEPARTMENT OF PARKS AND RECREATION
PRIMARY RECORD

Primary # _____
HRI # _____
Trinomial _____
NRHP Status Code 6Z

Other Listings _____
Review Code _____ Reviewer _____ Date _____

Page 1 of 1 *Resource Name or #: (Assigned by recorder) 52nd Place Historic District

P1. Other Identifier: _____

*P2. Location: Not for Publication Unrestricted

*a. County Los Angeles and (P2c, P2e, and P2b or P2d. Attach a Location Map as necessary.)

*b. USGS 7.5' Quad _____ Date _____ T _____; R _____; _____ of _____ of Sec _____; _____ B.M.

c. Address 642 E. 52nd Place City Los Angeles Zip 90011

d. UTM: (Give more than one for large and/or linear resources) Zone _____, _____ mE/ _____ mN

e. Other Locational Data: (e.g., parcel #, directions to resource, elevation, etc., as appropriate)

APN #5103-005-006

*P3a. Description: (Describe resource and its major elements. Include design, materials, condition, alterations, size, setting, and boundaries)

This bungalow has been greatly altered (stuccoed-over, replaced windows). It has exposed roof beams, battered door frame and a river rock porch pedestal.

NON-CONTRIBUTING

*P3b. Resource Attributes: (List attributes and codes) HP2-Single Family Property

*P4. Resources Present: Building Structure Object Site District Element of District Other (Isolates, etc.)



P5b. Description of Photo: (view, date, accession #) June 2008

north elevation

*P6. Date Constructed/Age and

Source: Historic Prehistoric

Both

1911/19 Tax Assessor

*P7. Owner and Address:

Delia Garcia

& Fernando Ramos

642 E. 52nd Pl., LA 90011

*P8. Recorded by: (Name, affiliation,

and address) Teresa Grimes and

Christina Chiang; CAJA

523 W. 6th Street, Suite 1134

Los Angeles, CA 90014

*P9. Date Recorded: 1/5/09

*P10. Survey Type: (Describe)

Intensive

*P11. Report Citation: (Cite survey report and other sources, or enter "none.") 52nd Place Historic Resource Survey

*Attachments: NONE Location Map Continuation Sheet Building, Structure, and Object Record

Archaeological Record District Record Linear Feature Record Milling Station Record Rock Art Record

Artifact Record Photograph Record Other (List): _____

State of California The Resources Agency
 DEPARTMENT OF PARKS AND RECREATION
PRIMARY RECORD

Primary # _____
 HRI # _____
 Trinomial _____
NRHP Status Code 1D

Other Listings _____
 Review Code _____ Reviewer _____ Date _____

Page 1 of 1 *Resource Name or #: (Assigned by recorder) 52nd Place Historic District

P1. Other Identifier: _____

*P2. Location: Not for Publication Unrestricted

*a. County Los Angeles and (P2c, P2e, and P2b or P2d. Attach a Location Map as necessary.)

*b. USGS 7.5' Quad _____ Date _____ T _____; R _____; _____ of _____ of Sec _____; _____ B.M.

c. Address 645 E. 52nd Place City Los Angeles Zip 90011

d. UTM: (Give more than one for large and/or linear resources) Zone _____, _____ mE/ _____ mN

e. Other Locational Data: (e.g., parcel #, directions to resource, elevation, etc., as appropriate)

APN # 5103-004-013

*P3a. Description: (Describe resource and its major elements. Include design, materials, condition, alterations, size, setting, and boundaries)

This one-story bungalow is clad with wood shingles and covered by a front-facing gabled roof with a lower front-gabled roof offset to the west over the porch. The bottom halves of two porch supports are battered river rock piers. On the eastern side, the pier continues into a very low wall. The top halves are piers topped by two rectangular wood pieces with their ends facing front (south) that act as a capital under the tie beam. The western elevation features a river rock chimney. The main entrance under the porch has a fixed single-paned window on the eastern side. The window on the western side has a three-part design with a large fixed single pane flanked by multi-paned casements. The driveway on the western side is in two rows for the car tires. CONTRIBUTING

*P3b. Resource Attributes: (List attributes and codes) HP2-Single Family Property

*P4. Resources Present: Building Structure Object Site District Element of District Other (Isolates, etc.)



P5b. Description of Photo: (view, date, accession #) June 2008
south elevation

*P6. Date Constructed/Age and

Source: Historic Prehistoric
 Both

1911/19 Tax Assessor

*P7. Owner and Address:

Bettie Richardson
645 E. 52nd Pl.
LA 90011

*P8. Recorded by: (Name, affiliation, and address) Teresa Grimes and
Christina Chiang; CAJA

523 W. 6th Street, Suite 1134
Los Angeles, CA 90014

*P9. Date Recorded: 1/5/09

*P10. Survey Type: (Describe)

Intensive

*P11. Report Citation: (Cite survey report and other sources, or enter "none.") 52nd Place Historic Resource Survey

*Attachments: NONE Location Map Continuation Sheet Building, Structure, and Object Record

Archaeological Record District Record Linear Feature Record Milling Station Record Rock Art Record

Artifact Record Photograph Record Other (List): _____

State of California The Resources Agency
 DEPARTMENT OF PARKS AND RECREATION
PRIMARY RECORD

Primary # _____
 HRI # _____
 Trinomial _____
NRHP Status Code 1D

Other Listings _____
 Review Code _____ Reviewer _____ Date _____

Page 1 of 1 *Resource Name or #: (Assigned by recorder) 52nd Place Historic District

P1. Other Identifier: _____

*P2. Location: Not for Publication Unrestricted

*a. County Los Angeles and (P2c, P2e, and P2b or P2d. Attach a Location Map as necessary.)

*b. USGS 7.5' Quad _____ Date _____ T _____; R _____; _____ of _____ of Sec _____; _____ B.M.

c. Address 648 E. 52nd Place City Los Angeles Zip 90011

d. UTM: (Give more than one for large and/or linear resources) Zone _____, _____ mE/ _____ mN

e. Other Locational Data: (e.g., parcel #, directions to resource, elevation, etc., as appropriate)

APN # 5103-005-007

*P3a. Description: (Describe resource and its major elements. Include design, materials, condition, alterations, size, setting, and boundaries)

This side-gabled, one-story bungalow has overhanging eaves, exposed rafter tails, and coursed shingles. It has a shallowly cross-gabled front on the western side that intersects the porch roof with a low-pitched, extended roof. The porch roof emerges from the lower third of the main side gable. An extended horizontal beam is set into the porch's shed roof and over the two, symmetrical porch supports. The upper half of the each support is a pair of wood beams over a stuccoed pedestal. The eastern pedestal continues into a low wall that encloses the porch corner. Very low, short walls line the wide steps to the entrance and meet the pedestals. A group of three double-hung sash windows are east of the door. The window on the other side is not as large. CONTRIBUTING

*P3b. Resource Attributes: (List attributes and codes) HP2-Single Family Property

*P4. Resources Present: Building Structure Object Site District Element of District Other (Isolates, etc.)

P5b. Description of Photo: (view, date, accession #) June 2008

north elevation

*P6. Date Constructed/Age and

Source: Historic Prehistoric

Both

1911/19 Tax Assessor

*P7. Owner and Address:

Barbara Carroll

648 E. 52nd Pl.

LA 90011

*P8. Recorded by: (Name, affiliation,

and address) Teresa Grimes and

Christina Chiang; CAJA

523 W. 6th Street, Suite 1134

Los Angeles, CA 90014

*P9. Date Recorded: 1/5/09

*P10. Survey Type: (Describe)

Intensive

*P11. Report Citation: (Cite survey report and other sources, or enter "none.") 52nd Place Historic Resource Survey

*Attachments: NONE Location Map Continuation Sheet Building, Structure, and Object Record

Archaeological Record District Record Linear Feature Record Milling Station Record Rock Art Record

Artifact Record Photograph Record Other (List): _____



State of California The Resources Agency
DEPARTMENT OF PARKS AND RECREATION
PRIMARY RECORD

Primary # _____
HRI # _____
Trinomial _____
NRHP Status Code 1D

Other Listings _____
Review Code _____ Reviewer _____ Date _____

Page 1 of 1 *Resource Name or #: (Assigned by recorder) 52nd Place Historic District

P1. Other Identifier: _____

*P2. Location: Not for Publication Unrestricted

*a. County Los Angeles and (P2c, P2e, and P2b or P2d. Attach a Location Map as necessary.)

*b. USGS 7.5' Quad _____ Date _____ T _____; R _____; _____ of _____ of Sec _____; _____ B.M.

c. Address 653 E. 52nd Place City Los Angeles Zip 90011

d. UTM: (Give more than one for large and/or linear resources) Zone _____, _____ mE/ _____ mN

e. Other Locational Data: (e.g., parcel #, directions to resource, elevation, etc., as appropriate)

APN # 5103-004-012

*P3a. Description: (Describe resource and its major elements. Include design, materials, condition, alterations, size, setting, and boundaries)

A cross-gabled roof with overhanging eaves covers this one-story bungalow. At the apex of each gable there is a vertical slat vent and exposed rafter tails. The exterior siding consists of long wood shingles. Access to the porch, which is tucked under the western end of the primary (south) facade, is from the side. Clinker brick interspersed with river rock makes up the lower half of the porch wall with curved trim that follows the curve out of the porch ends. Two flat, rectangular piers make up the top halves of the symmetrical porch supports. Two pairs of crossed wood pieces with flared ends make up the capital under the eaves with exposed rafter tails. A long rectangular window with a three-part design is situated east of the porch. CONTRIBUTING

*P3b. Resource Attributes: (List attributes and codes) HP2-Single Family Property

*P4. Resources Present: Building Structure Object Site District Element of District Other (Isolates, etc.)



P5b. Description of Photo: (view, date, accession #) June 2008

south elevation

*P6. Date Constructed/Age and

Source: Historic Prehistoric

Both

1911/20 Tax Assessor

*P7. Owner and Address:

Bettie Richardson

1031 E. 50th St.

LA 90011

*P8. Recorded by: (Name, affiliation, and address) Teresa Grimes and

Christina Chiang; CAJA

523 W. 6th Street, Suite 1134

Los Angeles, CA 90014

*P9. Date Recorded: 1/5/09

*P10. Survey Type: (Describe)

Intensive

*P11. Report Citation: (Cite survey report and other sources, or enter "none.") 52nd Place Historic Resource Survey

*Attachments: NONE Location Map Continuation Sheet Building, Structure, and Object Record

Archaeological Record District Record Linear Feature Record Milling Station Record Rock Art Record

Artifact Record Photograph Record Other (List): _____

State of California The Resources Agency
 DEPARTMENT OF PARKS AND RECREATION
PRIMARY RECORD

Primary # _____
 HRI # _____
 Trinomial _____
NRHP Status Code 1D

Other Listings _____
 Review Code _____ Reviewer _____ Date _____

Page 1 of 2 *Resource Name or #: (Assigned by recorder) 52nd Place Historic District

P1. Other Identifier: _____

*P2. Location: Not for Publication Unrestricted

*a. County Los Angeles and (P2c, P2e, and P2b or P2d. Attach a Location Map as necessary.)

*b. USGS 7.5' Quad _____ Date _____ T _____; R _____; _____ of _____ of Sec _____; _____ B.M.

c. Address 656 E. 52nd Place City Los Angeles Zip 90011

d. UTM: (Give more than one for large and/or linear resources) Zone _____, _____ mE/ _____ mN

e. Other Locational Data: (e.g., parcel #, directions to resource, elevation, etc., as appropriate)

APN # 5103-005-008

*P3a. Description: (Describe resource and its major elements. Include design, materials, condition, alterations, size, setting, and boundaries)

A painted brick and river rock chimney, porch pedestal, and low wall distinguish this one-story bungalow. The house is sheathed with wood shingles and is covered by a front-facing gabled roof. A lower front-gabled roof extends over the porch on the western side of the primary façade. The roofs are characterized by overhanging eaves and exposed rafter tails. The chimney extends through the apex of the main gable, which also has a vertical slat vent and exposed rafter tails. On the porch gable, the knee brace meets the roof beam in the middle forming a squat "I" and the two remaining beams, united by a tie beam, lie over the wood posts, the upper part of the porch supports. The rocks are spaced as quoins, outlining the form of the chimney, pedestal, and wall. CONTRIBUTING

*P3b. Resource Attributes: (List attributes and codes) HP2-Single Family Property

*P4. Resources Present: Building Structure Object Site District Element of District Other (Isolates, etc.)

P5b. Description of Photo: (view, date, accession #) June 2008

north elevation

*P6. Date Constructed/Age and

Source: Historic Prehistoric

Both

1911/19 Tax Assessor

*P7. Owner and Address:

Jose Maldonado

656 E. 52nd Pl.

LA 90011

*P8. Recorded by: (Name, affiliation,

and address) Teresa Grimes and

Christina Chiang; CAJA

523 W. 6th Street, Suite 1134

Los Angeles, CA 90014

*P9. Date Recorded: 1/5/09

*P10. Survey Type: (Describe)

Intensive



*P11. Report Citation: (Cite survey report and other sources, or enter "none.") 52nd Place Historic Resource Survey

*Attachments: NONE Location Map Continuation Sheet Building, Structure, and Object Record

Archaeological Record District Record Linear Feature Record Milling Station Record Rock Art Record

Artifact Record Photograph Record Other (List): _____

Page 2 of 2 *Resource Name or # (Assigned by recorder) 656 E. 52nd Place
*Recorded by: Teresa Grimes and Christina Chiang *Date 1/5/09
 Continuation Update

Three concrete steps lead to a walkway, then steps to the east bordered by the low wall and one of the pedestals. The entry is a turn to the south. West of the main entrance is a window with a fixed single pane topped by a divided transom. A projecting bay with shed roof is to the east of the chimney. Centered on the bay is a group of three multi-paned casement windows.

State of California The Resources Agency
 DEPARTMENT OF PARKS AND RECREATION
PRIMARY RECORD

Primary # _____
 HRI # _____
 Trinomial _____
NRHP Status Code 1D

Other Listings _____
 Review Code _____ Reviewer _____ Date _____

Page 1 of 1 *Resource Name or #: (Assigned by recorder) 52nd Place Historic District

P1. Other Identifier: _____

*P2. Location: Not for Publication Unrestricted

*a. County Los Angeles and (P2c, P2e, and P2b or P2d. Attach a Location Map as necessary.)

*b. USGS 7.5' Quad _____ Date _____ T _____; R _____; _____ of _____ of Sec _____; _____ B.M.

c. Address 659 E. 52nd Place City Los Angeles Zip 90011

d. UTM: (Give more than one for large and/or linear resources) Zone _____, _____ mE/ _____ mN

e. Other Locational Data: (e.g., parcel #, directions to resource, elevation, etc., as appropriate)

APN # 5103-004-011

*P3a. Description: (Describe resource and its major elements. Include design, materials, condition, alterations, size, setting, and boundaries)

This one-story bungalow is very simple in plan and design. It is sheathed with clapboard and covered by a front-facing gabled roof that projects over the porch. The roof is characterized by overhanging eaves, exposed rafter tails, and a vertical slat vent. A concrete walkway with three steps, a landing, and four wider steps on the porch lead to the main entrance. Two rectangular windows are on either side of the door. They both consist of a fixed single pane topped by a divided transom. The one on the west is closer and almost touching the doorframe. Stone piers connected to a very low wall with flat trim on top distinguish the porch. The upper half of the porch support is a wood pier with two rectangular wood beams with the ends facing the north acting as the capital.

CONTRIBUTING

*P3b. Resource Attributes: (List attributes and codes) HP2-Single Family Property

*P4. Resources Present: Building Structure Object Site District Element of District Other (Isolates, etc.)

P5b. Description of Photo: (view, date, accession #) June 2008

south elevation

*P6. Date Constructed/Age and

Source: Historic Prehistoric

Both

1911/20 Tax Assessor

*P7. Owner and Address:

Josie Jackson

659 E. 52nd Pl.

LA 90011

*P8. Recorded by: (Name, affiliation,

and address) Teresa Grimes and

Christina Chiang; CAJA

523 W. 6th Street, Suite 1134

Los Angeles, CA 90014

*P9. Date Recorded: 1/5/09

*P10. Survey Type: (Describe)

Intensive

*P11. Report Citation: (Cite survey report and other sources, or enter "none.") 52nd Place Historic Resource Survey

*Attachments: NONE Location Map Continuation Sheet Building, Structure, and Object Record

Archaeological Record District Record Linear Feature Record Milling Station Record Rock Art Record

Artifact Record Photograph Record Other (List): _____



State of California The Resources Agency
DEPARTMENT OF PARKS AND RECREATION
PRIMARY RECORD

Primary # _____
HRI # _____
Trinomial _____
NRHP Status Code 1D

Other Listings _____
Review Code _____ Reviewer _____ Date _____

Page 1 of 1 *Resource Name or #: (Assigned by recorder) 52nd Place Historic District

P1. Other Identifier: _____

*P2. Location: Not for Publication Unrestricted

*a. County Los Angeles and (P2c, P2e, and P2b or P2d. Attach a Location Map as necessary.)

*b. USGS 7.5' Quad _____ Date _____ T _____; R _____; _____ of _____ of Sec _____; _____ B.M.

c. Address 662 E. 52nd Place City Los Angeles Zip 90011

d. UTM: (Give more than one for large and/or linear resources) Zone _____, _____ mE/ _____ mN

e. Other Locational Data: (e.g., parcel #, directions to resource, elevation, etc., as appropriate)

APN # 5103-005-009

*P3a. Description: (Describe resource and its major elements. Include design, materials, condition, alterations, size, setting, and boundaries)

This one-story bungalow has a very simple plan and design. It is covered by a side-gabled roof with a shed roof extending over the porch at a very low pitch. The back (south) roof becomes a gambrel. The roofs are characterized by overhanging eaves and exposed rafter tails. The house is sheathed in coursed wood shingles. The porch has an inset, extended horizontal beam joined to the symmetrical, porch supports. Each porch support consists of a painted river rock pedestal and two wood posts for the upper half. The eastern pedestal continues into a low river rock wall that encloses the porch corner. There are two large, rectangular windows on either side of the main entrance. The door and window frames are battered. The iron fence along the sidewalk is a recent addition.
CONTRIBUTING

*P3b. Resource Attributes: (List attributes and codes) HP2-Single Family Property

*P4. Resources Present: Building Structure Object Site District Element of District Other (Isolates, etc.)

P5b. Description of Photo: (view, date, accession #) June 2008
north elevation

*P6. Date Constructed/Age and

Source: Historic Prehistoric
 Both

1911/19 Tax Assessor

*P7. Owner and Address:

Cynthia Fraire
662 E. 52nd Pl. LA 90011

*P8. Recorded by: (Name, affiliation, and address) Teresa Grimes and
Christina Chiang; CAJA
523 W. 6th Street, Suite 1134
Los Angeles, CA 90014

*P9. Date Recorded: 1/5/09

*P10. Survey Type: (Describe)
Intensive

*P11. Report Citation: (Cite survey report and other sources, or enter "none.") 52nd Place Historic Resource Survey

*Attachments: NONE Location Map Continuation Sheet Building, Structure, and Object Record
 Archaeological Record District Record Linear Feature Record Milling Station Record Rock Art Record
 Artifact Record Photograph Record Other (List): _____

State of California The Resources Agency
 DEPARTMENT OF PARKS AND RECREATION
PRIMARY RECORD

Primary # _____
 HRI # _____
 Trinomial _____
NRHP Status Code 1D

Other Listings _____
 Review Code _____ Reviewer _____ Date _____

Page 1 of 1 *Resource Name or #: (Assigned by recorder) 52nd Place Historic District

P1. Other Identifier: _____

*P2. Location: Not for Publication Unrestricted

*a. County Los Angeles and (P2c, P2e, and P2b or P2d. Attach a Location Map as necessary.)

*b. USGS 7.5' Quad _____ Date _____ T _____; R _____; _____ of _____ of Sec _____; _____ B.M.

c. Address 665 E. 52nd Place City Los Angeles Zip 90011

d. UTM: (Give more than one for large and/or linear resources) Zone _____, _____ mE/ _____ mN

e. Other Locational Data: (e.g., parcel #, directions to resource, elevation, etc., as appropriate)

APN # 5103-004-010

*P3a. Description: (Describe resource and its major elements. Include design, materials, condition, alterations, size, setting, and boundaries)

This one-story bungalow is clad with wood shingles. A front-facing gabled roof covers the main portion of the house, while a lower front-gabled roof extends over the porch. The roofs are characterized by overhanging eaves, exposed rafter tails, and vertical slat vents. A concrete walkway with three small steps, a path and then five, wider steps leads to the main entrance. To each side of the door is a large, rectangular window that consists of a fixed single pane topped by a divided transom. The window on the west is closer and almost touching the doorframe. The painted, brick porch has rectangular piers connected to a very low wall with flat concrete trim on top. The chimney on the western elevation has been eliminated above the roof. CONTRIBUTING

*P3b. Resource Attributes: (List attributes and codes) HP2-Single Family Property

*P4. Resources Present: Building Structure Object Site District Element of District Other (Isolates, etc.)



P5b. Description of Photo: (view, date, accession #) June 2008
south elevation

*P6. Date Constructed/Age and

Source: Historic Prehistoric
 Both

1911/19 Tax Assessor

*P7. Owner and Address:

Gerardo Orellania
665 E. 52nd Pl.
LA 90011

*P8. Recorded by: (Name, affiliation, and address) Teresa Grimes and
Christina Chiang; CAJA

523 W. 6th Street, Suite 1134
Los Angeles, CA 90014

*P9. Date Recorded: 1/5/09

*P10. Survey Type: (Describe)

Intensive

*P11. Report Citation: (Cite survey report and other sources, or enter "none.") 52nd Place Historic Resource Survey

*Attachments: NONE Location Map Continuation Sheet Building, Structure, and Object Record

Archaeological Record District Record Linear Feature Record Milling Station Record Rock Art Record

Artifact Record Photograph Record Other (List): _____

State of California The Resources Agency
DEPARTMENT OF PARKS AND RECREATION
PRIMARY RECORD

Primary # _____
HRI # _____
Trinomial _____
NRHP Status Code 1D

Other Listings _____
Review Code _____ Reviewer _____ Date _____

Page 1 of 1 *Resource Name or #: (Assigned by recorder) 52nd Place Historic District

P1. Other Identifier: _____

*P2. Location: Not for Publication Unrestricted

*a. County Los Angeles and (P2c, P2e, and P2b or P2d. Attach a Location Map as necessary.)

*b. USGS 7.5' Quad _____ Date _____ T _____; R _____; _____ of _____ of Sec _____; _____ B.M.

c. Address 668 E. 52nd Place City Los Angeles Zip 90011

d. UTM: (Give more than one for large and/or linear resources) Zone _____, _____ mE/ _____ mN

e. Other Locational Data: (e.g., parcel #, directions to resource, elevation, etc., as appropriate)

APN # 5103-005-010

*P3a. Description: (Describe resource and its major elements. Include design, materials, condition, alterations, size, setting, and boundaries)

A front-facing gabled roof with a vertical slat vent and exposed rafter tails covers this one-story bungalow. It is sheathed with long wood shingles. The primary (south) elevation is symmetrically organized. A projecting shed roof covers the centrally located porch. The porch has battered piers of clinker brick spotted with river rock. On top of the piers are two rectangular wood pieces with their ends facing front right under a horizontal beam. There are concrete steps and walkway to the main entrance flanked by two, large windows. The one on the west is a paired double-hung sash. Window grilles, a chain link fence around the front yard and the short, latticed wall on the eastern side are minor alterations. CONTRIBUTING

*P3b. Resource Attributes: (List attributes and codes) HP2-Single Family Property

*P4. Resources Present: Building Structure Object Site District Element of District Other (Isolates, etc.)



P5b. Description of Photo: (view, date, accession #) June 2008

north elevation

*P6. Date Constructed/Age and

Source: Historic Prehistoric

Both

1914/19 Tax Assessor

*P7. Owner and Address:

Jose Toledo

668 E. 52nd Pl.

LA 90011

*P8. Recorded by: (Name, affiliation,

and address) Teresa Grimes and

Christina Chiang; CAJA

523 W. 6th Street, Suite 1134

Los Angeles, CA 90014

*P9. Date Recorded: 1/5/09

*P10. Survey Type: (Describe)

Intensive

*P11. Report Citation: (Cite survey report and other sources, or enter "none.") 52nd Place Historic Resource Survey

*Attachments: NONE Location Map Continuation Sheet Building, Structure, and Object Record

Archaeological Record District Record Linear Feature Record Milling Station Record Rock Art Record

Artifact Record Photograph Record Other (List): _____

State of California The Resources Agency
DEPARTMENT OF PARKS AND RECREATION
PRIMARY RECORD

Primary # _____
HRI # _____
Trinomial _____
NRHP Status Code 1D

Other Listings _____
Review Code _____ Reviewer _____ Date _____

Page 1 of 1 *Resource Name or #: (Assigned by recorder) 52nd Place Historic District

P1. Other Identifier: _____

*P2. Location: Not for Publication Unrestricted

*a. County Los Angeles and (P2c, P2e, and P2b or P2d. Attach a Location Map as necessary.)

*b. USGS 7.5' Quad _____ Date _____ T ____; R ____; _____ of _____ of Sec ____; _____ B.M.

c. Address 671 and 673 E. 52nd Place City Los Angeles Zip 90011

d. UTM: (Give more than one for large and/or linear resources) Zone __, ____ mE/ ____ mN

e. Other Locational Data: (e.g., parcel #, directions to resource, elevation, etc., as appropriate)
APN # 5103-004-009

*P3a. Description: (Describe resource and its major elements. Include design, materials, condition, alterations, size, setting, and boundaries)

This two-story, rectangular-plan duplex is of recent construction. It has decorative quoins, evenly-spaced windows, and a canopy over the center door. A garage is on the first story and behind the building is another garage on the northeast side. NON-CONTRIBUTING

*P3b. Resource Attributes: (List attributes and codes) HP2-Single Family Property

*P4. Resources Present: Building Structure Object Site District Element of District Other (Isolates, etc.)

P5b. Description of Photo: (view, date, accession #) January 2009

southwest elevation

*P6. Date Constructed/Age and

Source: Historic Prehistoric

Both

2009 Building Permit

*P7. Owner and Address:

Troy Cove

251 E. 105th St.

LA 90003

*P8. Recorded by: (Name, affiliation,

and address) Teresa Grimes and

Christina Chiang; CAJA

523 W. 6th Street, Suite 1134

Los Angeles, CA 90014

*P9. Date Recorded: 2/2/09

*P10. Survey Type: (Describe)

Intensive

*P11. Report Citation: (Cite survey report and other sources, or enter "none.") 52nd Place Historic Resource Survey

*Attachments: NONE Location Map Continuation Sheet Building, Structure, and Object Record

Archaeological Record District Record Linear Feature Record Milling Station Record Rock Art Record

Artifact Record Photograph Record Other (List): _____

State of California The Resources Agency
 DEPARTMENT OF PARKS AND RECREATION
PRIMARY RECORD

Primary # _____
 HRI # _____
 Trinomial _____
NRHP Status Code 1D

Other Listings _____
 Review Code _____ Reviewer _____ Date _____

Page 1 of 1 *Resource Name or #: (Assigned by recorder) 52nd Place Historic District

P1. Other Identifier: _____

*P2. Location: Not for Publication Unrestricted

*a. County Los Angeles and (P2c, P2e, and P2b or P2d. Attach a Location Map as necessary.)

*b. USGS 7.5' Quad _____ Date _____ T _____; R _____; _____ of _____ of Sec _____; _____ B.M.

c. Address 674 E. 52nd Place City Los Angeles Zip 90011

d. UTM: (Give more than one for large and/or linear resources) Zone _____, _____ mE/ _____ mN

e. Other Locational Data: (e.g., parcel #, directions to resource, elevation, etc., as appropriate)

APN # 5103-05-011

*P3a. Description: (Describe resource and its major elements. Include design, materials, condition, alterations, size, setting, and boundaries)

This one-story bungalow is sheathed with long wood shingles. It is covered by a front-facing gabled roof. A lower front-facing gabled roof extends over the porch on the eastern end of the primary (north) façade. Both roofs have overhanging eaves, vertical slat vents, and exposed rafter tails. Three concrete steps lead to a walkway and three wider steps to the main entrance. The wider steps have been covered with a faux-stone veneer. A large rectangular window is positioned west of the door. It consists of a fixed single pane topped by a divided transom. River rocks make up the porch pier pedestals with its low wall on the eastern side and the chimney on the western elevation. East of the porch is a projecting bay with a shed roof and new, triple window. CONTRIBUTING

*P3b. Resource Attributes: (List attributes and codes) HP2-Single Family Property

*P4. Resources Present: Building Structure Object Site District Element of District Other (Isolates, etc.)



P5b. Description of Photo: (view, date, accession #) June 2008
north elevation

*P6. Date Constructed/Age and

Source: Historic Prehistoric
 Both

1911/40 Tax Assessor

*P7. Owner and Address:

Eusebio & Martha Lopez
674 E. 52nd Pl.
LA 90011

*P8. Recorded by: (Name, affiliation, and address) Teresa Grimes and
Christina Chiang; CAJA

523 W. 6th Street, Suite 1134
Los Angeles, CA 90014

*P9. Date Recorded: 1/5/09

*P10. Survey Type: (Describe)
Intensive

*P11. Report Citation: (Cite survey report and other sources, or enter "none.") 52nd Place Historic Resource Survey

*Attachments: NONE Location Map Continuation Sheet Building, Structure, and Object Record

Archaeological Record District Record Linear Feature Record Milling Station Record Rock Art Record

Artifact Record Photograph Record Other (List): _____

State of California The Resources Agency
 DEPARTMENT OF PARKS AND RECREATION
PRIMARY RECORD

Primary # _____
 HRI # _____
 Trinomial _____
 NRHP Status Code 1D

Other Listings _____
 Review Code _____ Reviewer _____ Date _____

Page 1 of 1 *Resource Name or #: (Assigned by recorder) 52nd Place Historic District

P1. Other Identifier: _____

*P2. Location: Not for Publication Unrestricted

*a. County Los Angeles and (P2c, P2e, and P2b or P2d. Attach a Location Map as necessary.)

*b. USGS 7.5' Quad _____ Date _____ T _____; R _____; _____ of _____ of Sec _____; _____ B.M.

c. Address 677 E. 52nd Place City Los Angeles Zip 9011

d. UTM: (Give more than one for large and/or linear resources) Zone _____, _____ mE/ _____ mN

e. Other Locational Data: (e.g., parcel #, directions to resource, elevation, etc., as appropriate)

APN # 5103-004-008

*P3a. Description: (Describe resource and its major elements. Include design, materials, condition, alterations, size, setting, and boundaries)

This one-story bungalow is clad with wood shingles and covered by a front-facing gabled roof. The roof is characterized by overhanging eaves, exposed rafter tails, and a vertical slat vent. A concrete walkway with three small steps, a path and then four, wider steps leads to the main entrance. The two symmetrical, porch piers connected to a low wall are stuccoed. The upper halves of the porch supports are a pair of square posts with triangular knee braces faced toward the center. On the west, the window consists of a fixed single pane topped by a divided transom. The window on the east has a three-part design and is set further away from the door.
 CONTRIBUTING

*P3b. Resource Attributes: (List attributes and codes) HP2-Single Family Property

*P4. Resources Present: Building Structure Object Site District Element of District Other (Isolates, etc.)



P5b. Description of Photo: (view, date, accession #) June 2008

South Elevation

*P6. Date Constructed/Age and

Source: Historic Prehistoric
 Both

1911/19 Tax Assessor

*P7. Owner and Address:

Eddie Brown

PO Box 54241

LA 90054

*P8. Recorded by: (Name, affiliation, and address) Teresa Grimes and

Christina Chiang; CAJA

523 W. 6th Street, Suite 1134

Los Angeles, CA 90014

*P9. Date Recorded: 1/5/09

*P10. Survey Type: (Describe)

Intensive

*P11. Report Citation: (Cite survey report and other sources, or enter "none.") 52nd Place Historic Resource Survey

*Attachments: NONE Location Map Continuation Sheet Building, Structure, and Object Record

Archaeological Record District Record Linear Feature Record Milling Station Record Rock Art Record

Artifact Record Photograph Record Other (List): _____

State of California The Resources Agency
DEPARTMENT OF PARKS AND RECREATION
PRIMARY RECORD

Primary # _____
HRI # _____
Trinomial _____
NRHP Status Code 1D

Other Listings _____
Review Code _____ Reviewer _____ Date _____

Page 1 of 1 *Resource Name or #: (Assigned by recorder) 52nd Place Historic District

P1. Other Identifier: _____

*P2. Location: Not for Publication Unrestricted

*a. County Los Angeles and (P2c, P2e, and P2b or P2d. Attach a Location Map as necessary.)

*b. USGS 7.5' Quad _____ Date _____ T ____; R ____; _____ of _____ of Sec ____; _____ B.M.

c. Address 680 E. 52nd Place City Los Angeles Zip 90011

d. UTM: (Give more than one for large and/or linear resources) Zone _____, _____ mE/ _____ mN

e. Other Locational Data: (e.g., parcel #, directions to resource, elevation, etc., as appropriate)

APN # 5103-005-012

*P3a. Description: (Describe resource and its major elements. Include design, materials, condition, alterations, size, setting, and boundaries)

This one-story bungalow has some alterations. The exterior has been stuccoed and the windows have been replaced. Original design details include the roof configuration, exposed rafter tails, and battered shape of the porch pedestals. ALTERED-CONTRIBUTING

*P3b. Resource Attributes: (List attributes and codes) HP2-Single Family Property

*P4. Resources Present: Building Structure Object Site District Element of District Other (Isolates, etc.)

P5b. Description of Photo: (view, date, accession #) June 2008
north elevation

*P6. Date Constructed/Age and

Source: Historic Prehistoric
 Both

1911/19 Tax Assessor

*P7. Owner and Address:

Daniel Pacheco
680 E. 52nd Pl.
LA 90011

*P8. Recorded by: (Name, affiliation, and address) Teresa Grimes and

Christina Chiang; CAJA
523 W. 6th, Suite 1134
Los Angeles, CA 90014

*P9. Date Recorded: 1/5/14, 8/6/14
updtd by Shannon Ryan DCP

*P10. Survey Type: (Describe)
Intensive

*P11. Report Citation: (Cite survey report and other sources, or enter "none.") 52nd Place Historic Resource Survey

*Attachments: NONE Location Map Continuation Sheet Building, Structure, and Object Record
 Archaeological Record District Record Linear Feature Record Milling Station Record Rock Art Record
 Artifact Record Photograph Record Other (List): _____

State of California The Resources Agency
DEPARTMENT OF PARKS AND RECREATION
PRIMARY RECORD

Primary # _____
HRI # _____
Trinomial _____
NRHP Status Code 1D

Other Listings _____
Review Code _____ Reviewer _____ Date _____

Page 1 of 1 *Resource Name or #: (Assigned by recorder) 52nd Place Historic District

P1. Other Identifier: _____

*P2. Location: Not for Publication Unrestricted

*a. County Los Angeles and (P2c, P2e, and P2b or P2d. Attach a Location Map as necessary.)

*b. USGS 7.5' Quad _____ Date _____ T _____; R _____; _____ of _____ of Sec _____; _____ B.M.

c. Address 683 E. 52nd Place City Los Angeles Zip 90011

d. UTM: (Give more than one for large and/or linear resources) Zone _____, _____ mE/ _____ mN

e. Other Locational Data: (e.g., parcel #, directions to resource, elevation, etc., as appropriate)

APN # 503-004-007

*P3a. Description: (Describe resource and its major elements. Include design, materials, condition, alterations, size, setting, and boundaries)

This one-story bungalow is clad with long wood shingles. It is covered by a multi-gabled roof, which consists of front-facing gable with another front gable projecting over the porch and a cross gable on the western elevation. The roofs have a low-pitch, overhanging eaves, and exposed rafter tails. Two battered piers with brick trim support the porch roof. A pair of X-shaped pieces with the horizontal ends facing the street (south) side are on top of the piers, acting like capitals. On top of these are flattened triangular wood pieces under the tie beam. The king and knee braces look are thinner and flatter than the rest of the beams. A concrete walkway with three small steps, a path and then four, wider steps leads to the main entrance. A door is positioned in the middle of two large windows. CONTRIBUTING

*P3b. Resource Attributes: (List attributes and codes) HP2-Single Family Property

*P4. Resources Present: Building Structure Object Site District Element of District Other (Isolates, etc.)



P5b. Description of Photo: (view, date, accession #) June 2008

south elevation

*P6. Date Constructed/Age and

Source: Historic Prehistoric

Both

1911/16 Tax Assessor

*P7. Owner and Address:

Clifford Shankllin

683 E. 52nd Pl.

LA 90011

*P8. Recorded by: (Name, affiliation, and address) Teresa Grimes and

Christina Chiang; CAJA

523 W. 6th Street, Suite 1134

Los Angeles, CA 90014

*P9. Date Recorded: 1/5/09

*P10. Survey Type: (Describe)

Intensive

*P11. Report Citation: (Cite survey report and other sources, or enter "none.") 52nd Place Historic Resource Survey

*Attachments: NONE Location Map Continuation Sheet Building, Structure, and Object Record

Archaeological Record District Record Linear Feature Record Milling Station Record Rock Art Record

Artifact Record Photograph Record Other (List): _____

State of California The Resources Agency
 DEPARTMENT OF PARKS AND RECREATION
PRIMARY RECORD

Primary # _____
 HRI # _____
 Trinomial _____
NRHP Status Code 1D

Other Listings _____
 Review Code _____ Reviewer _____ Date _____

Page 1 of 1 *Resource Name or #: (Assigned by recorder) 52nd Place Historic District

P1. Other Identifier: _____

*P2. Location: Not for Publication Unrestricted

*a. County Los Angeles and (P2c, P2e, and P2b or P2d. Attach a Location Map as necessary.)

*b. USGS 7.5' Quad _____ Date _____ T _____; R _____; _____ of _____ of Sec _____; _____ B.M.

c. Address 684 E. 52nd Place City Los Angeles Zip 90011

d. UTM: (Give more than one for large and/or linear resources) Zone _____, _____ mE/ _____ mN

e. Other Locational Data: (e.g., parcel #, directions to resource, elevation, etc., as appropriate)

APN # 5103-005-013

*P3a. Description: (Describe resource and its major elements. Include design, materials, condition, alterations, size, setting, and boundaries)

This one-story bungalow is clad with wood shingles and covered by a front-facing gabled roof. The roof is characterized by overhanging eaves, exposed rafter tails, and a vertical slat vent. A shed roof projects over the porch, which is offset to the western end of the primary (north) façade. It is supported by square wood posts with knee braces. A rectangular window east of the porch has been replaced. A brick chimney is located on the western elevation. The other details and base of the house are obscured by landscaping. Window grilles are a minor alteration.

CONTRIBUTING

*P3b. Resource Attributes: (List attributes and codes) HP2-Single Family Property

*P4. Resources Present: Building Structure Object Site District Element of District Other (Isolates, etc.)

P5b. Description of Photo: (view, date, accession #) June 2008

north elevation

*P6. Date Constructed/Age and

Source: Historic Prehistoric

Both

1911/19 Tax Assessor

*P7. Owner and Address:

Raul Tobon

684 E. 52nd Pl.

LA 90011

*P8. Recorded by: (Name, affiliation, and address) Teresa Grimes and

Christina Chiang; CAJA

523 W. 6th Street, Suite 1134

Los Angeles, CA 90014

*P9. Date Recorded: 1/5/09

*P10. Survey Type: (Describe)

Intensive



*P11. Report Citation: (Cite survey report and other sources, or enter "none.") 52nd Place Historic Resource Survey

*Attachments: NONE Location Map Continuation Sheet Building, Structure, and Object Record

Archaeological Record District Record Linear Feature Record Milling Station Record Rock Art Record

Artifact Record Photograph Record Other (List): _____

State of California The Resources Agency
DEPARTMENT OF PARKS AND RECREATION
PRIMARY RECORD

Primary # _____
HRI # _____
Trinomial _____
NRHP Status Code 1D

Other Listings _____
Review Code _____ Reviewer _____ Date _____

Page 1 of 1 *Resource Name or #: (Assigned by recorder) 52nd Place Historic District

P1. Other Identifier: _____

*P2. Location: Not for Publication Unrestricted

*a. County Los Angeles and (P2c, P2e, and P2b or P2d. Attach a Location Map as necessary.)

*b. USGS 7.5' Quad _____ Date _____ T ____; R ____; _____ of _____ of Sec ____; _____ B.M.

c. Address 690 E. 52nd Place City Los Angeles Zip 90011

d. UTM: (Give more than one for large and/or linear resources) Zone __, __ mE/ _____ mN

e. Other Locational Data: (e.g., parcel #, directions to resource, elevation, etc., as appropriate)

APN # 5103-005-014

*P3a. Description: (Describe resource and its major elements. Include design, materials, condition, alterations, size, setting, and boundaries)

This one-story bungalow has some alterations. The exterior has been stuccoed and the windows have been replaced. Original design details include the roof configuration, the porch pedestals, and truss work over the porch.

ALTERED-CONTRIBUTING

*P3b. Resource Attributes: (List attributes and codes) HP2-Single Family Property

*P4. Resources Present: Building Structure Object Site District Element of District Other (Isolates, etc.)



P5b. Description of Photo: (view, date, accession #) June 2008
north elevation

*P6. Date Constructed/Age and

Source: Historic Prehistoric
 Both

1911/19 Tax Assessor

*P7. Owner and Address:

Miguel Echeveria
690 E. 52nd Pl.
LA 90011

*P8. Recorded by: (Name, affiliation, and address) Teresa Grimes and

Christina Chiang; CAJA
523 W. 6th Street, Suite 1134
Los Angeles, CA 90014

*P9. Date Recorded: 1/5/14, 8/6/14
updtd by Shannon Ryan DCP

*P10. Survey Type: (Describe)
Intensive

*P11. Report Citation: (Cite survey report and other sources, or enter "none.") 52nd Place Historic Resource Survey

*Attachments: NONE Location Map Continuation Sheet Building, Structure, and Object Record

Archaeological Record District Record Linear Feature Record Milling Station Record Rock Art Record

Artifact Record Photograph Record Other (List): _____

State of California The Resources Agency
 DEPARTMENT OF PARKS AND RECREATION
PRIMARY RECORD

Primary # _____
 HRI # _____
 Trinomial _____
NRHP Status Code 1D

Other Listings _____
 Review Code _____ Reviewer _____ Date _____

Page 1 of 2 *Resource Name or #: (Assigned by recorder) 52nd Place Historic District

P1. Other Identifier: _____

*P2. Location: Not for Publication Unrestricted

- *a. County Los Angeles and (P2c, P2e, and P2b or P2d. Attach a Location Map as necessary.)
- *b. USGS 7.5' Quad _____ Date _____ T _____; R _____; _____ of _____ of Sec _____; _____ B.M.
- c. Address 691 E. 52nd Place City Los Angeles Zip 90011
- d. UTM: (Give more than one for large and/or linear resources) Zone _____, _____ mE/ _____ mN
- e. Other Locational Data: (e.g., parcel #, directions to resource, elevation, etc., as appropriate)
 APN # 5103-004-006

*P3a. Description: (Describe resource and its major elements. Include design, materials, condition, alterations, size, setting, and boundaries)

This one-story bungalow is covered by a shallow cross-gabled roof. Long wood shingles clad the house. A concrete walkway with three small steps, a path and then four, wider steps leads to the main entrance. East of the door is a group of three four-over-four double-hung sash windows. The western end of the porch was enclosed in 1923. There is a window on the western side of this new room. The bottom halves of two porch supports are piers made of river rock, which continues into a very low wall on both sides. The tops of two symmetrical porch supports are wood beams joined to the tie beam. The front (south) gable's extended roof beams correspond to the king post and knee braces that extend a little below the tie beam. ALTERED CONTRIBUTING

*P3b. Resource Attributes: (List attributes and codes) HP2-Single Family Property

*P4. Resources Present: Building Structure Object Site District Element of District Other (Isolates, etc.)

P5b. Description of Photo: (view, date, accession #) January 2009
south elevation

*P6. Date Constructed/Age and Source: Historic Prehistoric
 Both
1911/14 Tax Assessor

*P7. Owner and Address:
Sharon Oliver
691 E. 52nd Pl.
LA 90011

*P8. Recorded by: (Name, affiliation, and address) Teresa Grimes and
Christina Chiang; CAJA
523 W. 6th Street, Suite 1134
Los Angeles, CA 90014

*P9. Date Recorded: 1/5/09

*P10. Survey Type: (Describe)
Intensive

*P11. Report Citation: (Cite survey report and other sources, or enter "none.") 52nd Place Historic Resource Survey

*Attachments: NONE Location Map Continuation Sheet Building, Structure, and Object Record
 Archaeological Record District Record Linear Feature Record Milling Station Record Rock Art Record
 Artifact Record Photograph Record Other (List): _____

Page 2 of 2 *Resource Name or # (Assigned by recorder) 691 E. 52nd Place
*Recorded by: Teresa Grimes and Christina Chiang *Date 1/5/09
 Continuation Update

Wood boards are placed diagonally (tilted toward the center) in between the vertical beams and behind the tie beam to make a truss configuration. The western and eastern gables also have exposed roof beams. The western elevation features a river rock chimney surrounded by evenly spaced double-hung windows.

State of California The Resources Agency
DEPARTMENT OF PARKS AND RECREATION
PRIMARY RECORD

Primary # _____
HRI # _____
Trinomial _____
NRHP Status Code 1D

Other Listings _____
Review Code _____ Reviewer _____ Date _____

Page 1 of 1 *Resource Name or #: (Assigned by recorder) 52nd Place Historic District

P1. Other Identifier: _____

*P2. Location: Not for Publication Unrestricted

*a. County Los Angeles and (P2c, P2e, and P2b or P2d. Attach a Location Map as necessary.)

*b. USGS 7.5' Quad _____ Date _____ T _____; R _____; _____ of _____ of Sec _____; _____ B.M.

c. Address 696 E. 52nd Place City Los Angeles Zip 90011

d. UTM: (Give more than one for large and/or linear resources) Zone _____, _____ mE/ _____ mN

e. Other Locational Data: (e.g., parcel #, directions to resource, elevation, etc., as appropriate)

APN # 5103-005-015

*P3a. Description: (Describe resource and its major elements. Include design, materials, condition, alterations, size, setting, and boundaries)

A cross-gabled roof covers this one-story bungalow. A separate, shed roof projects over the porch, which is located at the eastern end of the primary (north) façade. The gabled roofs are characterized by overhanging eaves, exposed rafter tails, and vertical slat vents. The wood shingles are hung in a distinct orderly, staggered fashion. The concrete steps and walkway to the main entrance are on the western end of the porch. The door is in the middle of two large rectangular windows. West of the door, there is a tripartite window. To the east are three, identical double-hung sash windows. The stuccoed porch piers slope into a common wall. Two Y-shaped wood brackets connect the piers with the porch roof. The western elevation has a stuccoed chimney. CONTRIBUTING

*P3b. Resource Attributes: (List attributes and codes) HP2-Single Family Property

*P4. Resources Present: Building Structure Object Site District Element of District Other (Isolates, etc.)

P5b. Description of Photo: (view, date, accession #) June 2008

north elevation

*P6. Date Constructed/Age and

Source: Historic Prehistoric

Both

1911/12 Tax Assessor

*P7. Owner and Address:

Ericka Austin

696 E. 52nd Pl.

LA 90011

*P8. Recorded by: (Name, affiliation,

and address) Teresa Grimes and

Christina Chiang; CAJA

523 W. 6th Street, Suite 1134

Los Angeles, CA 90014

*P9. Date Recorded: 1/5/09

*P10. Survey Type: (Describe)

Intensive

*P11. Report Citation: (Cite survey report and other sources, or enter "none.") 52nd Place Historic Resource Survey

*Attachments: NONE Location Map Continuation Sheet Building, Structure, and Object Record

Archaeological Record District Record Linear Feature Record Milling Station Record Rock Art Record

Artifact Record Photograph Record Other (List): _____

State of California The Resources Agency
 DEPARTMENT OF PARKS AND RECREATION
PRIMARY RECORD

Primary # _____
 HRI # _____
 Trinomial _____
NRHP Status Code 1D

Other Listings _____
 Review Code _____ Reviewer _____ Date _____

Page 1 of 3 *Resource Name or #: (Assigned by recorder) 52nd Place Historic District

P1. Other Identifier: Residence of Charlotta and Joseph Bass

*P2. Location: Not for Publication Unrestricted

*a. County Los Angeles and (P2c, P2e, and P2b or P2d. Attach a Location Map as necessary.)

*b. USGS 7.5' Quad _____ Date _____ T _____; R _____; _____ of _____ of Sec _____; _____ B.M.

c. Address 697 E. 52nd Place City Los Angeles Zip 90011

d. UTM: (Give more than one for large and/or linear resources) Zone _____, _____ mE/ _____ mN

e. Other Locational Data: (e.g., parcel #, directions to resource, elevation, etc., as appropriate)

APN # 5103-003-030

*P3a. Description: (Describe resource and its major elements. Include design, materials, condition, alterations, size, setting, and boundaries)

This one-story, wood shingled bungalow has a low-pitched porch roof that extends out of the middle of a side-gabled roof. Only the top third of a front gable with a vertical slat vent is on the upper half of the side-gabled roof. The painted clinker brick battered porch piers are capped by bricks in uncommon sailor position on the sides and common sailor within. On top of the caps are two rectangular wood pieces with their ends facing front (south) right under a horizontal beam. On the western elevation, a painted clinker brick chimney is trimmed on top by bricks in the same pattern as the porch piers. There are two windows on either side of the chimney. A concrete walkway with three small steps, a path and then four, wider steps leads to the main entrance. ALTERED CONTRIBUTING

*P3b. Resource Attributes: (List attributes and codes) HP2-Single Family Property

*P4. Resources Present: Building Structure Object Site District Element of District Other (Isolates, etc.)



P5b. Description of Photo: (view, date, accession #) June 2008
south elevation

*P6. Date Constructed/Age and

Source: Historic Prehistoric
 Both

1911/19 Tax Assessor

*P7. Owner and Address:

Lucille Casimiro
697 E. 52nd Pl.
LA 90011

*P8. Recorded by: (Name, affiliation, and address) Teresa Grimes and

Christina Chiang; CAJA
523 W. 6th Street, Suite 1134
Los Angeles, CA 90014

*P9. Date Recorded: 1/5/09

*P10. Survey Type: (Describe)
Intensive

*P11. Report Citation: (Cite survey report and other sources, or enter "none.") 52nd Place Historic Resource Survey

*Attachments: NONE Location Map Continuation Sheet Building, Structure, and Object Record

Archaeological Record District Record Linear Feature Record Milling Station Record Rock Art Record

Artifact Record Photograph Record Other (List): _____

BUILDING, STRUCTURE, AND OBJECT RECORD

*NRHP Status Code 1D

Page 2 of 3 *Resource Name or # (Assigned by recorder) 52nd Place Historic District

B1. Historic Name: 697 E. 52nd Place

B2. Common Name: None

B3. Original Use: Single-family Residence B4. Present Use: Single-family Residence

*B5. Architectural Style: Craftsman

*B6. Construction History: (Construction date, alterations, and date of alterations)

*B7. Moved? No Yes Unknown Date: _____ Original Location: _____

*B8. Related Features:

B9a. Architect: None b. Builder: Tifal Brothers

*B10. Significance: Theme Ethnic History and Architecture Area Los Angeles

Period of Significance 1911-1958 Property Type Residence Applicable Criteria A & C

(Discuss importance in terms of historical or architectural context as defined by theme, period, and geographic scope. Also address integrity.)

During the 1930s, Joseph and Charlotta Bass lived at 697 E. 52nd Place. They were community leaders, civil rights activists, and journalists. Charlotta Bass owned and operated the California Eagle from 1912 until 1951. At its height, the Eagle had a circulation of sixty thousand, making it the largest African American newspaper on the West Coast. In 1913, she met Joseph Bass who would eventually become editor of the Eagle and her husband. She was particularly active against restrictive covenants in housing and segregated schools. She also campaigned heavily against job discrimination and was an advocate of the "Don't Buy Where You Can't Work" campaign in the 1930s. Joseph Bass was teacher for seven years in his hometown of Jefferson, Missouri before leaving in 1894 for a newspaper job in Topeka. In addition to Topeka, Joseph worked for newspapers in Helena, Montana and San Francisco before finally settling in Los Angeles in 1913.

B11. Additional Resource Attributes: (List attributes and codes) _____

*B12. References:

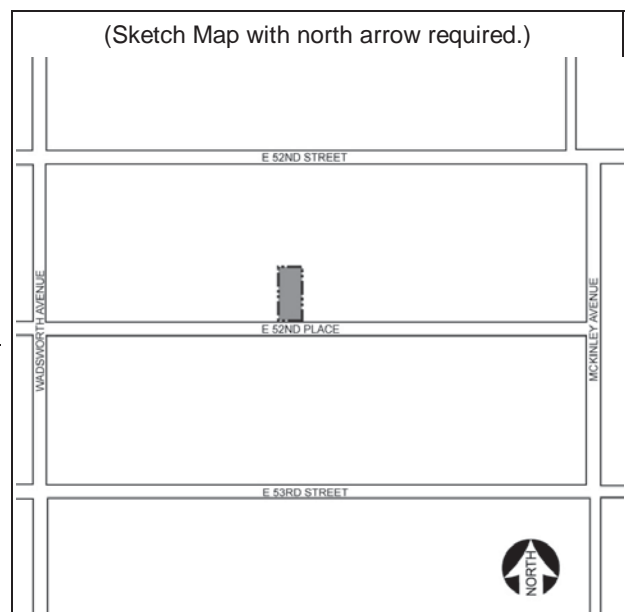
Multiple Property Documentation Form, Historic Resources Associated with African Americans in Los Angeles, 2008.

B13. Remarks:

*B14. Evaluator: Teresa Grimes

*Date of Evaluation: 1/5/09

(This space reserved for official comments.)



Page 3 of 3 *Resource Name or # (Assigned by recorder) 697 E. 52nd Place
*Recorded by: Teresa Grimes and Christina Chiang *Date 1/5/09
 Continuation Update

Description Continued: The door is set between two large window openings. The architrave trim is original, although the windows have been replaced.

Significance Continued: He worked as a general newspaperman for Charlotta at the California Eagle. Bass was promoted to editor and married his boss in 1914.

State of California The Resources Agency
DEPARTMENT OF PARKS AND RECREATION
PRIMARY RECORD

Primary # _____
HRI # _____
Trinomial _____
NRHP Status Code 1D

Other Listings _____
Review Code _____ Reviewer _____ Date _____

Page 1 of 1 *Resource Name or #: (Assigned by recorder) 52nd Place Historic District

P1. Other Identifier: _____

*P2. Location: Not for Publication Unrestricted

*a. County Los Angeles and (P2c, P2e, and P2b or P2d. Attach a Location Map as necessary.)

*b. USGS 7.5' Quad _____ Date _____ T _____; R _____; _____ of _____ of Sec _____; _____ B.M.

c. Address 700 E. 52nd Place City Los Angeles Zip 90011

d. UTM: (Give more than one for large and/or linear resources) Zone _____, _____ mE/ _____ mN

e. Other Locational Data: (e.g., parcel #, directions to resource, elevation, etc., as appropriate)

APN # 5103-005-016

*P3a. Description: (Describe resource and its major elements. Include design, materials, condition, alterations, size, setting, and boundaries)

This one-story bungalow is clad with alternating rows of thin and medium width wood siding. It is covered by a cross-gabled roof with overhanging eaves, exposed rafter tails, and vertical slat vents. The front gable projects from the western side of the primary (south) façade. Centered under the gable is a fixed single-paned window shaded by a non-original awning. To the east is a porch covered by a flat trellis-like roof. The main entrance is located in the corner of the porch. To the east is large rectangular window with a fixed single pane topped by a divided transom. The porch piers and chimney on the eastern elevation are stuccoed. The front yard is surrounded by an iron fence. CONTRIBUTING

*P3b. Resource Attributes: (List attributes and codes) HP2-Single Family Property

*P4. Resources Present: Building Structure Object Site District Element of District Other (Isolates, etc.)

P5b. Description of Photo: (view, date, accession #) June 2008

north elevation

*P6. Date Constructed/Age and

Source: Historic Prehistoric

Both

1911/13 Tax Assessor

*P7. Owner and Address:

Maria Flores & Horacio Lopez

700 E. 52nd Pl.

LA 90011

*P8. Recorded by: (Name, affiliation, and address) Teresa Grimes and

Christina Chiang; CAJA

523 W. 6th Street, Suite 1134

Los Angeles, CA 90014

*P9. Date Recorded: 1/5/09

*P10. Survey Type: (Describe)

Intensive

*P11. Report Citation: (Cite survey report and other sources, or enter "none.") 52nd Place Historic Resource Survey

*Attachments: NONE Location Map Continuation Sheet Building, Structure, and Object Record

Archaeological Record District Record Linear Feature Record Milling Station Record Rock Art Record

Artifact Record Photograph Record Other (List): _____

State of California The Resources Agency
DEPARTMENT OF PARKS AND RECREATION
PRIMARY RECORD

Primary # _____
HRI # _____
Trinomial _____
NRHP Status Code 6Z

Other Listings _____
Review Code _____ Reviewer _____ Date _____

Page 1 of 1 *Resource Name or #: (Assigned by recorder) 52nd Place Historic District

P1. Other Identifier: _____

*P2. Location: Not for Publication Unrestricted

*a. County Los Angeles and (P2c, P2e, and P2b or P2d. Attach a Location Map as necessary.)

*b. USGS 7.5' Quad _____ Date _____ T ____; R ____; _____ of _____ of Sec ____; _____ B.M.

c. Address 703 and 705 E. 52nd Place City Los Angeles Zip 90011

d. UTM: (Give more than one for large and/or linear resources) Zone __, _____ mE/ _____ mN

e. Other Locational Data: (e.g., parcel #, directions to resource, elevation, etc., as appropriate)

APN # 5103-003-029

*P3a. Description: (Describe resource and its major elements. Include design, materials, condition, alterations, size, setting, and boundaries)

This two-story duplex is of new construction. It is side-gabled with evenly-spaced windows. It has decorative quoins and canopies over the doors on the south and west sides.

NON-CONTRIBUTING

*P3b. Resource Attributes: (List attributes and codes) HP2-Single Family Property

*P4. Resources Present: Building Structure Object Site District Element of District Other (Isolates, etc.)

P5b. Description of Photo: (view, date, accession #) January 2009

southwest elevation

*P6. Date Constructed/Age and

Source: Historic Prehistoric

Both

2008 Building Permit

*P7. Owner and Address:

US Bank

PO Box 410

Sunset Beach 90742

*P8. Recorded by: (Name, affiliation, and address) Teresa Grimes and

Christina Chiang; CAJA

523 W. 6th Street, Suite 1134

Los Angeles, CA 90014

*P9. Date Recorded: 2/2/2009

*P10. Survey Type: (Describe)

Intensive

*P11. Report Citation: (Cite survey report and other sources, or enter "none.") 52nd Place Historic Resource Survey

*Attachments: NONE Location Map Continuation Sheet Building, Structure, and Object Record

Archaeological Record District Record Linear Feature Record Milling Station Record Rock Art Record

Artifact Record Photograph Record Other (List): _____

State of California The Resources Agency
 DEPARTMENT OF PARKS AND RECREATION
PRIMARY RECORD

Primary # _____
 HRI # _____
 Trinomial _____
NRHP Status Code 1D

Other Listings _____
 Review Code _____ Reviewer _____ Date _____

Page 1 of 1 *Resource Name or #: (Assigned by recorder) 52nd Place Historic District

P1. Other Identifier: _____

*P2. Location: Not for Publication Unrestricted

*a. County Los Angeles and (P2c, P2e, and P2b or P2d. Attach a Location Map as necessary.)

*b. USGS 7.5' Quad _____ Date _____ T _____; R _____; _____ of _____ of Sec _____; _____ B.M.

c. Address 706 E. 52nd Place City Los Angeles Zip 90011

d. UTM: (Give more than one for large and/or linear resources) Zone _____, _____ mE/ _____ mN

e. Other Locational Data: (e.g., parcel #, directions to resource, elevation, etc., as appropriate)

APN # 5103-006-021

*P3a. Description: (Describe resource and its major elements. Include design, materials, condition, alterations, size, setting, and boundaries)

This one-story bungalow is covered by a front-facing gabled roof and sheathed with clapboard. The roof is characterized by overhanging eaves, exposed rafter tails, a vertical slat vent, and triangular knee braces. A porch projects from the western end of the primary (north) façade. It is covered by trellis-like roof. Two horizontal boards with ends facing the street act as capitals for the porch supports. The identical porch supports are battered, painted brick sparsely studded with river rock. A low wall with two levels on the eastern side is also in this material. Long, fixed single-paned windows flank the main entrance. They replaced smaller windows in 1929. The door and windows are set in battered frames. Recent alterations include a chain link fence and paved over front yard.

ALTERED CONTRIBUTING

*P3b. Resource Attributes: (List attributes and codes) HP2-Single Family Property

*P4. Resources Present: Building Structure Object Site District Element of District Other (Isolates, etc.)

P5b. Description of Photo: (view, date, accession #) June 2008

north elevation

*P6. Date Constructed/Age and

Source: Historic Prehistoric

Both

1911/15 Tax Assessor

*P7. Owner and Address:

Ferdy Gonzales

706 E. 52nd Pl.

LA 90011

*P8. Recorded by: (Name, affiliation,

and address) Teresa Grimes and

Christina Chiang; CAJA

523 W. 6th Street, Suite 1134

Los Angeles, CA 90014

*P9. Date Recorded: 1/5/09

*P10. Survey Type: (Describe)

Intensive



*P11. Report Citation: (Cite survey report and other sources, or enter "none.") 52nd Place Historic Resource Survey

*Attachments: NONE Location Map Continuation Sheet Building, Structure, and Object Record

Archaeological Record District Record Linear Feature Record Milling Station Record Rock Art Record

Artifact Record Photograph Record Other (List): _____

State of California The Resources Agency
 DEPARTMENT OF PARKS AND RECREATION
PRIMARY RECORD

Primary # _____
 HRI # _____
 Trinomial _____
NRHP Status Code 1D

Other Listings _____
 Review Code _____ Reviewer _____ Date _____

Page 1 of 1 *Resource Name or #: (Assigned by recorder) 52nd Place Historic District

P1. Other Identifier: _____

*P2. Location: Not for Publication Unrestricted

*a. County Los Angeles and (P2c, P2e, and P2b or P2d. Attach a Location Map as necessary.)

*b. USGS 7.5' Quad _____ Date _____ T _____; R _____; _____ of _____ of Sec _____; _____ B.M.

c. Address 707 E. 52nd Place City Los Angeles Zip 90011

d. UTM: (Give more than one for large and/or linear resources) Zone _____, _____ mE/ _____ mN

e. Other Locational Data: (e.g., parcel #, directions to resource, elevation, etc., as appropriate)

APN # 5103-003-028

*P3a. Description: (Describe resource and its major elements. Include design, materials, condition, alterations, size, setting, and boundaries)

This one-story bungalow is clad with alternating rows of thin and medium width wood siding. It is covered by a cross-gabled roof with overhanging eaves, and exposed rafter tails. The front gable projects from the eastern side of the primary (south) façade to cover the porch. The two symmetrical, battered porch piers connected to a low wall are all made of clinker brick and river rock, as well as the battered chimney on the western elevation. A pair of x-shaped pieces with the horizontal ends facing the street side are on top of the piers. They are intertwined with the decorative truss under the front gable. The windows are mostly one-over-one double-hung sash. A group of four is found under the porch. The iron fence lining the sidewalk is a recent addition. CONTRIBUTING

*P3b. Resource Attributes: (List attributes and codes) HP2-Single Family Property

*P4. Resources Present: Building Structure Object Site District Element of District Other (Isolates, etc.)

P5b. Description of Photo: (view, date, accession #) June 2008

south elevation

*P6. Date Constructed/Age and

Source: Historic Prehistoric

Both

1911/19 Tax Assessor

*P7. Owner and Address:

Hermes Lopez

707 E. 52nd Pl.

LA 90011

*P8. Recorded by: (Name, affiliation, and address) Teresa Grimes and

Christina Chiang; CAJA

523 W. 6th Street, Suite 1134

Los Angeles, CA 90014

*P9. Date Recorded: 1/5/09

*P10. Survey Type: (Describe)

Intensive

*P11. Report Citation: (Cite survey report and other sources, or enter "none.") 52nd Place Historic Resource Survey

*Attachments: NONE Location Map Continuation Sheet Building, Structure, and Object Record

Archaeological Record District Record Linear Feature Record Milling Station Record Rock Art Record

Artifact Record Photograph Record Other (List): _____

State of California The Resources Agency
 DEPARTMENT OF PARKS AND RECREATION
PRIMARY RECORD

Primary # _____
 HRI # _____
 Trinomial _____
NRHP Status Code 1D

Other Listings _____
 Review Code _____ Reviewer _____ Date _____

Page 1 of 1 *Resource Name or #: (Assigned by recorder) 52nd Place Historic District

P1. Other Identifier: _____

*P2. Location: Not for Publication Unrestricted

*a. County Los Angeles and (P2c, P2e, and P2b or P2d. Attach a Location Map as necessary.)

*b. USGS 7.5' Quad _____ Date _____ T _____; R _____; _____ of _____ of Sec _____; _____ B.M.

c. Address 712 E. 52nd Place City Los Angeles Zip 90011

d. UTM: (Give more than one for large and/or linear resources) Zone _____, _____ mE/ _____ mN

e. Other Locational Data: (e.g., parcel #, directions to resource, elevation, etc., as appropriate)

APN # 5103-006-022

*P3a. Description: (Describe resource and its major elements. Include design, materials, condition, alterations, size, setting, and boundaries)

A front-facing gabled roof with a clipped peak, horizontal slat vent, exposed rafter tails, and triangular knee braces covers this one-story bungalow. Long wood shingles clad the house. A concrete walkway on the western side turns into the porch on the eastern side with a side-gabled roof over it. The symmetrical porch supports are battered brick piers on the bottom half and wood posts on the top. A few of the casements in the tripartite windows on the primary (north) elevation have been replaced. The eastern elevation has a brick chimney.

CONTRIBUTING

*P3b. Resource Attributes: (List attributes and codes) HP2-Single Family Property

*P4. Resources Present: Building Structure Object Site District Element of District Other (Isolates, etc.)



jects.)

P5b. Description of Photo: (view, date, accession #) June 2008

north elevation

*P6. Date Constructed/Age and

Source: Historic Prehistoric

Both

1911/19 Tax Assessor

*P7. Owner and Address:

James Eula

712 E. 52nd Pl.

LA 90011

*P8. Recorded by: (Name, affiliation,

and address) Teresa Grimes and

Christina Chiang; CAJA

523 W. 6th Street, Suite 1134

Los Angeles, CA 90014

*P9. Date Recorded: 1/5/09

*P10. Survey Type: (Describe)

Intensive

*P11. Report Citation: (Cite survey report and other sources, or enter "none.") 52nd Place Historic Resource Survey

*Attachments: NONE Location Map Continuation Sheet Building, Structure, and Object Record

Archaeological Record District Record Linear Feature Record Milling Station Record Rock Art Record

Artifact Record Photograph Record Other (List): _____

State of California The Resources Agency
DEPARTMENT OF PARKS AND RECREATION
PRIMARY RECORD

Primary # _____
HRI # _____
Trinomial _____
NRHP Status Code 1D

Other Listings _____
Review Code _____ Reviewer _____ Date _____

Page 1 of 1 *Resource Name or #: (Assigned by recorder) 52nd Place Historic District

P1. Other Identifier: _____

*P2. Location: Not for Publication Unrestricted

*a. County Los Angeles and (P2c, P2e, and P2b or P2d. Attach a Location Map as necessary.)

*b. USGS 7.5' Quad _____ Date _____ T _____; R _____; _____ of _____ of Sec _____; _____ B.M.

c. Address 715 E. 52nd Place City Los Angeles Zip 90011

d. UTM: (Give more than one for large and/or linear resources) Zone _____, _____ mE/ _____ mN

e. Other Locational Data: (e.g., parcel #, directions to resource, elevation, etc., as appropriate)

APN # 5103-003-027

*P3a. Description: (Describe resource and its major elements. Include design, materials, condition, alterations, size, setting, and boundaries)

This one-story bungalow is covered with a cross-gabled roof and sheathed with alternating rows of thin and medium width wood siding. The roof is characterized by overhanging eaves, exposed rafter tails, and lattice vents. A porch is tucked beneath the western end of the front gable. To the east is a large rectangular window shaded by a non-original awning. The chimney on the western elevation, a battered pier on the western end of the porch, a low wall, and two very low pedestals next to the steps are in painted brick spotted with river rock. The iron fence lining the sidewalk and concrete blocks partially enclosing the porch are recent additions.

ALTERED CONTRIBUTING

*P3b. Resource Attributes: (List attributes and codes) HP2-Single Family Property

*P4. Resources Present: Building Structure Object Site District Element of District Other (Isolates, etc.)



P5b. Description of Photo: (view, date, accession #) June 2008
south elevation

*P6. Date Constructed/Age and

Source: Historic Prehistoric
 Both

1911/19 Tax Assessor

*P7. Owner and Address:

Maricela Yanez
& Jesus Rojas
715 E. 52nd Pl., LA 90011

*P8. Recorded by: (Name, affiliation, and address) Teresa Grimes and
Christina Chiang; CAJA
523 W. 6th Street, Suite 1134
Los Angeles, CA 90014

*P9. Date Recorded: 1/5/09

*P10. Survey Type: (Describe)
Intensive

*P11. Report Citation: (Cite survey report and other sources, or enter "none.") 52nd Place Historic Resource Survey

*Attachments: NONE Location Map Continuation Sheet Building, Structure, and Object Record
 Archaeological Record District Record Linear Feature Record Milling Station Record Rock Art Record
 Artifact Record Photograph Record Other (List): _____

State of California The Resources Agency
 DEPARTMENT OF PARKS AND RECREATION
PRIMARY RECORD

Primary # _____
 HRI # _____
 Trinomial _____
NRHP Status Code 1D

Other Listings _____
 Review Code _____ Reviewer _____ Date _____

Page 1 of 1 *Resource Name or #: (Assigned by recorder) 52nd Place Historic District

P1. Other Identifier: _____

*P2. Location: Not for Publication Unrestricted

*a. County Los Angeles and (P2c, P2e, and P2b or P2d. Attach a Location Map as necessary.)

*b. USGS 7.5' Quad _____ Date _____ T _____; R _____; _____ of _____ of Sec _____; _____ B.M.

c. Address 718 E. 52nd Place City Los Angeles Zip 90011

d. UTM: (Give more than one for large and/or linear resources) Zone _____, _____ mE/ _____ mN

e. Other Locational Data: (e.g., parcel #, directions to resource, elevation, etc., as appropriate)

APN # 5103-006-023

*P3a. Description: (Describe resource and its major elements. Include design, materials, condition, alterations, size, setting, and boundaries)

This one-story bungalow is covered by a cross-gabled roof and sheathed with wood shingles. The roof is characterized by overhanging eaves, exposed rafter tails, and lattice vents. Centered under the front gable is a long, rectangular tripartite window. The porch is located on the eastern side of the primary (north) façade, tucked under the side gable. The driveway on the eastern side of the house is in two rows for the car tires.

CONTRIBUTING

*P3b. Resource Attributes: (List attributes and codes) HP2-Single Family Property

*P4. Resources Present: Building Structure Object Site District Element of District Other (Isolates, etc.)

P5b. Description of Photo: (view, date, accession #) June 2008

north elevation

*P6. Date Constructed/Age and

Source: Historic Prehistoric

Both

1911/19 Tax Assessor

*P7. Owner and Address:

Antonio & Esperanza Casillas

718 E. 52nd Pl.

LA 90011

*P8. Recorded by: (Name, affiliation, and address)

Teresa Grimes and

Christina Chiang; CAJA

523 W. 6th Street, Suite 1134

Los Angeles, CA 90014

*P9. Date Recorded: 1/5/09

*P10. Survey Type: (Describe)

Intensive



*P11. Report Citation: (Cite survey report and other sources, or enter "none.") 52nd Place Historic Resource Survey

*Attachments: NONE Location Map Continuation Sheet Building, Structure, and Object Record

Archaeological Record District Record Linear Feature Record Milling Station Record Rock Art Record

Artifact Record Photograph Record Other (List): _____

State of California The Resources Agency
DEPARTMENT OF PARKS AND RECREATION
PRIMARY RECORD

Primary # _____
HRI # _____
Trinomial _____
NRHP Status Code 1D

Other Listings _____
Review Code _____ Reviewer _____ Date _____

Page 1 of 1 *Resource Name or #: (Assigned by recorder) 52nd Place Historic District

P1. Other Identifier: _____

*P2. Location: Not for Publication Unrestricted

*a. County Los Angeles and (P2c, P2e, and P2b or P2d. Attach a Location Map as necessary.)

*b. USGS 7.5' Quad _____ Date _____ T _____; R _____; _____ of _____ of Sec _____; _____ B.M.

c. Address 721 E. 52nd Place City Los Angeles Zip 90011

d. UTM: (Give more than one for large and/or linear resources) Zone _____, _____ mE/ _____ mN

e. Other Locational Data: (e.g., parcel #, directions to resource, elevation, etc., as appropriate)

APN # 5103-003-026

*P3a. Description: (Describe resource and its major elements. Include design, materials, condition, alterations, size, setting, and boundaries)

This one-story bungalow is sheathed in wood shingles and covered by a cross-gabled roof. A lower front-gabled roof extends from the western end of the primary (south) façade to cover a porch. The roofs are characterized by overhanging eaves, exposed rafter tails, lattice vents, and triangular knee braces. Two symmetrical porch pedestals and a low porch wall are stuccoed. The pedestals are massive and rise to meet the cross beam over the porch. A fixed single-paned window sits west of the door in the corner of the porch. The iron fence lining the front yard is a recent addition.

CONTRIBUTING

*P3b. Resource Attributes: (List attributes and codes) HP2-Single Family Property

*P4. Resources Present: Building Structure Object Site District Element of District Other (Isolates, etc.)



P5b. Description of Photo: (view, date, accession #) June 2008
south elevation

*P6. Date Constructed/Age and

Source: Historic Prehistoric
 Both

1911/28 Tax Assessor

*P7. Owner and Address:

Concepcion Martinez
721 E. 52nd Pl.
LA 90011

*P8. Recorded by: (Name, affiliation, and address) Teresa Grimes and

Christina Chiang; CAJA
523 W. 6th Street, Suite 1134
Los Angeles, CA 90014

*P9. Date Recorded: 1/5/09

*P10. Survey Type: (Describe)
Intensive

*P11. Report Citation: (Cite survey report and other sources, or enter "none.") 52nd Place Historic Resource Survey

*Attachments: NONE Location Map Continuation Sheet Building, Structure, and Object Record
 Archaeological Record District Record Linear Feature Record Milling Station Record Rock Art Record
 Artifact Record Photograph Record Other (List): _____

State of California The Resources Agency
 DEPARTMENT OF PARKS AND RECREATION
PRIMARY RECORD

Primary # _____
 HRI # _____
 Trinomial _____
NRHP Status Code 1D

Other Listings _____
 Review Code _____ Reviewer _____ Date _____

Page 1 of 2 *Resource Name or #: (Assigned by recorder) 52nd Place Historic District

P1. Other Identifier: Residence of Ivie Anderson

*P2. Location: Not for Publication Unrestricted

- *a. County Los Angeles and (P2c, P2e, and P2b or P2d. Attach a Location Map as necessary.)
- *b. USGS 7.5' Quad _____ Date _____ T _____; R _____; _____ of _____ of Sec _____; _____ B.M.
- c. Address 724 E. 52nd Place City Los Angeles Zip 90011
- d. UTM: (Give more than one for large and/or linear resources) Zone _____, _____ mE/ _____ mN
- e. Other Locational Data: (e.g., parcel #, directions to resource, elevation, etc., as appropriate)
 APN # 5103-006-024

*P3a. Description: (Describe resource and its major elements. Include design, materials, condition, alterations, size, setting, and boundaries)

A front-facing gabled roof with overhanging eaves and exposed rafter tails covers this one-story bungalow. The roof projects over the full-width porch. Clapboard sheathes the house. The battered piers at each end of the porch and low wall are stuccoed. On top of the piers, which are trimmed like panels are wood posts joined to the tie beam. The gable end features extended roof beams correspond to the king post and knee braces that extend a little below the tie beam. A concrete walkway and four steps lead to the main entrance. The door is positioned between two, rectangular windows. The western one has a three-part design with a fixed single-paned window topped by a transom and flanked by two multi-paned casements. The other is a group of multi-paned casements.
 CONTRIBUTING

*P3b. Resource Attributes: (List attributes and codes) HP2-Single Family Property

*P4. Resources Present: Building Structure Object Site District Element of District Other (Isolates, etc.)



P5b. Description of Photo: (view, date, accession #) January 2009
north elevation

*P6. Date Constructed/Age and Source: Historic Prehistoric
 Both
1911/16 Tax Assessor

*P7. Owner and Address:
Catherine Burleson
724 E. 52nd Pl.
LA 90011

*P8. Recorded by: (Name, affiliation, and address) Teresa Grimes and
Christina Chiang; CAJA
523 W. 6th Street, Suite 1134
Los Angeles, CA 90014

*P9. Date Recorded: 1/5/09

*P10. Survey Type: (Describe)
Intensive

*P11. Report Citation: (Cite survey report and other sources, or enter "none.") 52nd Place Historic Resource Survey

*Attachments: NONE Location Map Continuation Sheet Building, Structure, and Object Record
 Archaeological Record District Record Linear Feature Record Milling Station Record Rock Art Record
 Artifact Record Photograph Record Other (List): _____

BUILDING, STRUCTURE, AND OBJECT RECORD

*NRHP Status Code 1D

Page 2 of 2 *Resource Name or # (Assigned by recorder) 52nd Place Historic District

B1. Historic Name: 724 E. 52nd Place

B2. Common Name: None

B3. Original Use: Single-family Residence B4. Present Use: Single-family Residence

*B5. Architectural Style: Craftsman

*B6. Construction History: (Construction date, alterations, and date of alterations)

1911/16 constructed

*B7. Moved? No Yes Unknown Date: _____ Original Location: _____

*B8. Related Features:

B9a. Architect: None b. Builder: Tifal Brothers

*B10. Significance: Theme Ethnic History and Architecture Area Los Angeles

Period of Significance 1911-1958 Property Type Residence Applicable Criteria A & C

(Discuss importance in terms of historical or architectural context as defined by theme, period, and geographic scope. Also address integrity.)

Ivie Anderson lived at 724 E. 52nd Place from 1930 until 1945. Anderson was the first African American singer to join a black band on a permanent basis. She began her singing career in the early 1920s and performed with the likes of Curtis Mosby, Paul Howard, and Sonny Clay. In 1931 she was asked to join Duke Ellington's orchestra for a fourteen-week tour, but she remained with the organization until 1942. Among her performances on important records are It Don't Mean A Thing If It Ain't Got that Swing (1932), Stormy Weather (1933), and I Got It Bad and That Ain't Good (1941). She also appeared as a singer in films such as A Day at the Races (1937) and the Hit Parade (1937). Chronic asthma forced her to retire from touring, but she continued singing in local nightclubs. She opened Ivie's Chicken Shack at Central and Vernon Avenues in 1941. It was not a flimsy business suggested by the name, but rather a popular neighborhood restaurant that remained until 1957.

B11. Additional Resource Attributes: (List attributes and codes) _____

*B12. References:

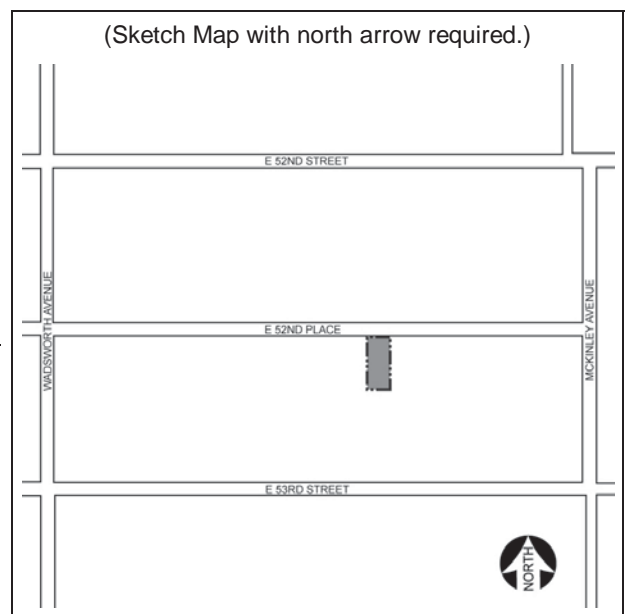
Multiple Property Documentation Form, Historic Resources Associated with African Americans in Los Angeles, 2008.

B13. Remarks:

*B14. Evaluator: Teresa Grimes

*Date of Evaluation: 1/5/09

(This space reserved for official comments.)



State of California The Resources Agency
 DEPARTMENT OF PARKS AND RECREATION
PRIMARY RECORD

Primary # _____
 HRI # _____
 Trinomial _____
NRHP Status Code 1D

Other Listings _____
 Review Code _____ Reviewer _____ Date _____

Page 1 of 1 *Resource Name or #: (Assigned by recorder) 52nd Place Historic District

P1. Other Identifier: _____

*P2. Location: Not for Publication Unrestricted

*a. County Los Angeles and (P2c, P2e, and P2b or P2d. Attach a Location Map as necessary.)

*b. USGS 7.5' Quad _____ Date _____ T _____; R _____; _____ of _____ of Sec _____; _____ B.M.

c. Address 729 E. 52nd Place City Los Angeles Zip 90011

d. UTM: (Give more than one for large and/or linear resources) Zone _____, _____ mE/ _____ mN

e. Other Locational Data: (e.g., parcel #, directions to resource, elevation, etc., as appropriate)

APN # 5103-003-025

*P3a. Description: (Describe resource and its major elements. Include design, materials, condition, alterations, size, setting, and boundaries)

A tall, vine-covered fence and trees obscure this one-story bungalow. It is sheathed in long wood shingles and covered by a front-facing gabled roof. A lower, front-gabled roof projects from the eastern end of the primary (south) façade to cover the porch. The gables are clipped and have overhanging eaves and exposed rafter tails.

CONTRIBUTING

*P3b. Resource Attributes: (List attributes and codes) HP2-Single Family Property

*P4. Resources Present: Building Structure Object Site District Element of District Other (Isolates, etc.)



P5b. Description of Photo: (view, date, accession #) June 2008

south elevation

*P6. Date Constructed/Age and

Source: Historic Prehistoric

Both

1911/19 Tax Assessor

*P7. Owner and Address:

Ignacio Barragan

729 E. 52nd Pl.

LA 90011

*P8. Recorded by: (Name, affiliation, and address) Teresa Grimes and

Christina Chiang; CAJA

523 W. 6th Street, Suite 1134

Los Angeles, CA 90014

*P9. Date Recorded: 1/5/09

*P10. Survey Type: (Describe)

Intensive

*P11. Report Citation: (Cite survey report and other sources, or enter "none.") 52nd Place Historic Resource Survey

*Attachments: NONE Location Map Continuation Sheet Building, Structure, and Object Record

Archaeological Record District Record Linear Feature Record Milling Station Record Rock Art Record

Artifact Record Photograph Record Other (List): _____

State of California The Resources Agency
 DEPARTMENT OF PARKS AND RECREATION
PRIMARY RECORD

Primary # _____
 HRI # _____
 Trinomial _____
NRHP Status Code 1D

Other Listings _____
 Review Code _____ Reviewer _____ Date _____

Page 1 of 1 *Resource Name or #: (Assigned by recorder) 52nd Place Historic District

P1. Other Identifier: _____

*P2. Location: Not for Publication Unrestricted

*a. County Los Angeles and (P2c, P2e, and P2b or P2d. Attach a Location Map as necessary.)

*b. USGS 7.5' Quad _____ Date _____ T _____; R _____; _____ of _____ of Sec _____; _____ B.M.

c. Address 730 E. 52nd Place City Los Angeles Zip 90011

d. UTM: (Give more than one for large and/or linear resources) Zone _____, _____ mE/ _____ mN

e. Other Locational Data: (e.g., parcel #, directions to resource, elevation, etc., as appropriate)

APN # 5103-006-025

*P3a. Description: (Describe resource and its major elements. Include design, materials, condition, alterations, size, setting, and boundaries)

This one-story, clapboarded bungalow has a low-pitched porch roof that extends out of the middle of a side-gabled roof. Only the top third of a front gable with a vertical slat vent is on the upper half of the side-gabled roof. The roofs are characterized by overhanging eaves and exposed rafter tails. The river rock porch pedestals are topped by wood posts and connected by a low wall of the same material that extends west to meet a third pedestal. The main entrance is located at the top of a short flight of concrete steps. The door is set between two large window openings. Casement windows are grouped in twos and threes with X-shaped muntins in the upper portions. Minor alterations include the iron fence lining the sidewalk, window grilles, and paved over front yard. CONTRIBUTING

*P3b. Resource Attributes: (List attributes and codes) HP2-Single Family Property

*P4. Resources Present: Building Structure Object Site District Element of District Other (Isolates, etc.)

P5b. Description of Photo: (view, date, accession #) June 2008
north elevation

*P6. Date Constructed/Age and

Source: Historic Prehistoric
 Both

1911/13 Tax Assessor

*P7. Owner and Address:

Virgilio Lopez
730 E. 52nd Pl.
LA 90011

*P8. Recorded by: (Name, affiliation, and address) Teresa Grimes and

Christina Chiang; CAJA
523 W. 6th Street, Suite 1134
Los Angeles, CA 90014

*P9. Date Recorded: 1/5/09

*P10. Survey Type: (Describe)
Intensive

*P11. Report Citation: (Cite survey report and other sources, or enter "none.") 52nd Place Historic Resource Survey

*Attachments: NONE Location Map Continuation Sheet Building, Structure, and Object Record

Archaeological Record District Record Linear Feature Record Milling Station Record Rock Art Record

Artifact Record Photograph Record Other (List): _____

State of California The Resources Agency
DEPARTMENT OF PARKS AND RECREATION
PRIMARY RECORD

Primary # _____
HRI # _____
Trinomial _____
NRHP Status Code 1D

Other Listings _____
Review Code _____ Reviewer _____ Date _____

Page 1 of 1 *Resource Name or #: (Assigned by recorder) 52nd Place Historic District

P1. Other Identifier: _____

*P2. Location: Not for Publication Unrestricted

*a. County Los Angeles and (P2c, P2e, and P2b or P2d. Attach a Location Map as necessary.)

*b. USGS 7.5' Quad _____ Date _____ T _____; R _____; _____ of _____ of Sec _____; _____ B.M.

c. Address 736 E. 52nd Place City Los Angeles Zip 90011

d. UTM: (Give more than one for large and/or linear resources) Zone _____, _____ mE/ _____ mN

e. Other Locational Data: (e.g., parcel #, directions to resource, elevation, etc., as appropriate)

APN # 5103-006-026

*P3a. Description: (Describe resource and its major elements. Include design, materials, condition, alterations, size, setting, and boundaries)

This one-story bungalow is covered by a cross-gabled roof and sheathed with wood shingles. The roof is characterized by overhanging eaves, exposed rafter tails, and lattice vents. The porch is located on the eastern side of the primary (north) façade, tucked under the front gable. The upper halves of the symmetrical porch supports are two wood posts crossed by a horizontal beam. The posts sit on battered brick piers, the design of which is echoed in the chimney that is located west of the porch. Window grilles and a chain-link fence around the front yard are recent additions.

CONTRIBUTING

*P3b. Resource Attributes: (List attributes and codes) HP2-Single Family Property

*P4. Resources Present: Building Structure Object Site District Element of District Other (Isolates, etc.)

P5b. Description of Photo: (view, date, accession #) June 2008

north elevation

*P6. Date Constructed/Age and

Source: Historic Prehistoric

Both

1911/19 Tax Assessor

*P7. Owner and Address:

Victoria Thomas

1120 W. Vernon Ave.

LA 90037

*P8. Recorded by: (Name, affiliation, and address) Teresa Grimes and

Christina Chiang; CAJA

523 W. 6th Street, Suite 1134

Los Angeles, CA 90014

*P9. Date Recorded: 1/5/09

*P10. Survey Type: (Describe)

Intensive

*P11. Report Citation: (Cite survey report and other sources, or enter "none.") 52nd Place Historic Resource Survey

*Attachments: NONE Location Map Continuation Sheet Building, Structure, and Object Record

Archaeological Record District Record Linear Feature Record Milling Station Record Rock Art Record

Artifact Record Photograph Record Other (List): _____

State of California The Resources Agency
 DEPARTMENT OF PARKS AND RECREATION
PRIMARY RECORD

Primary # _____
 HRI # _____
 Trinomial _____
NRHP Status Code 1D

Other Listings _____
 Review Code _____ Reviewer _____ Date _____

Page 1 of 1 *Resource Name or #: (Assigned by recorder) 52nd Place Historic District

P1. Other Identifier: _____

*P2. Location: Not for Publication Unrestricted

*a. County Los Angeles and (P2c, P2e, and P2b or P2d. Attach a Location Map as necessary.)

*b. USGS 7.5' Quad _____ Date _____ T _____; R _____; _____ of _____ of Sec _____; _____ B.M.

c. Address 737 E. 52nd Place City Los Angeles Zip 90011

d. UTM: (Give more than one for large and/or linear resources) Zone _____, _____ mE/ _____ mN

e. Other Locational Data: (e.g., parcel #, directions to resource, elevation, etc., as appropriate)

APN # 5103-003-024

*P3a. Description: (Describe resource and its major elements. Include design, materials, condition, alterations, size, setting, and boundaries)

This one-story bungalow is covered by a cross-gabled roof. The roof is characterized by overhanging eaves, exposed rafter tails, and vertical slat vents. A battered brick chimney is located on the primary (south) elevation and extends up the front-facing gable. To each side are rectangular window openings. A porch is recessed beneath the side-facing gable, which is supported by three battered brick piers. On top of the piers are wood posts and knee braces. The main entrance opens onto the porch and faces east. A wrought iron fence with low brick wall and piers is a recent addition. The exterior was stuccoed in 1990 and the windows have been replaced.

ALTERED CONTRIBUTING

*P3b. Resource Attributes: (List attributes and codes) HP2-Single Family Property

*P4. Resources Present: Building Structure Object Site District Element of District Other (Isolates, etc.)



P5b. Description of Photo: (view, date, accession #) June 2008
south elevation

*P6. Date Constructed/Age and

Source: Historic Prehistoric
 Both

1911/19 Tax Assessor

*P7. Owner and Address:

Jose & Rosa Olea
737 E. 52nd Pl.
LA 90011

*P8. Recorded by: (Name, affiliation, and address) Teresa Grimes and

Christina Chiang; CAJA
523 W. 6th Street, Suite 1134
Los Angeles, CA 90014

*P9. Date Recorded: 1/5/09

*P10. Survey Type: (Describe)

Intensive

*P11. Report Citation: (Cite survey report and other sources, or enter "none.") 52nd Place Historic Resource Survey

*Attachments: NONE Location Map Continuation Sheet Building, Structure, and Object Record

Archaeological Record District Record Linear Feature Record Milling Station Record Rock Art Record

Artifact Record Photograph Record Other (List): _____

State of California The Resources Agency
DEPARTMENT OF PARKS AND RECREATION
PRIMARY RECORD

Primary # _____
HRI # _____
Trinomial _____
NRHP Status Code 1D

Other Listings _____
Review Code _____ Reviewer _____ Date _____

Page 1 of 1 *Resource Name or #: (Assigned by recorder) 52nd Place Historic District

P1. Other Identifier: _____

*P2. Location: Not for Publication Unrestricted

*a. County Los Angeles and (P2c, P2e, and P2b or P2d. Attach a Location Map as necessary.)

*b. USGS 7.5' Quad _____ Date _____ T _____; R _____; _____ of _____ of Sec _____; _____ B.M.

c. Address 744 E. 52nd Place City Los Angeles Zip 90011

d. UTM: (Give more than one for large and/or linear resources) Zone _____, _____ mE/ _____ mN

e. Other Locational Data: (e.g., parcel #, directions to resource, elevation, etc., as appropriate)

APN # 5103-006-027

*P3a. Description: (Describe resource and its major elements. Include design, materials, condition, alterations, size, setting, and boundaries)

This one-story bungalow is covered by a cross-gabled roof and sheathed with clapboard. The roofs are characterized by overhanging eaves and exposed rafter tails. The front gable projects from the eastern end of the primary (north) façade to cover the porch. Two symmetrical porch piers are made of brown brick spotted with river rock. A low wall built in the same materials unites the two piers. A light-colored, brick-framed opening with a keystone is positioned in the middle of the low wall. On top of the piers are two horizontal wood beams with the ends facing the street acting as the capital. The entrance walkway and stairs are on the western side of the porch. A low brick pier is on the western side of the steps. The door is flanked by large tripartite windows.

CONTRIBUTING

*P3b. Resource Attributes: (List attributes and codes) HP2-Single Family Property

*P4. Resources Present: Building Structure Object Site District Element of District Other (Isolates, etc.)



P5b. Description of Photo: (view, date, accession #) June 2008
north elevation

*P6. Date Constructed/Age and

Source: Historic Prehistoric
 Both

1911/19 Tax Assessor

*P7. Owner and Address:

*P8. Recorded by: (Name, affiliation, and address) Teresa Grimes and
Christina Chiang; CAJA
523 W. 6th Street, Suite 1134
Los Angeles, CA 90014

*P9. Date Recorded: 1/5/09

*P10. Survey Type: (Describe)
Intensive

*P11. Report Citation: (Cite survey report and other sources, or enter "none.") 52nd Place Historic Resource Survey

*Attachments: NONE Location Map Continuation Sheet Building, Structure, and Object Record
 Archaeological Record District Record Linear Feature Record Milling Station Record Rock Art Record
 Artifact Record Photograph Record Other (List): _____

State of California The Resources Agency
 DEPARTMENT OF PARKS AND RECREATION
PRIMARY RECORD

Primary # _____
 HRI # _____
 Trinomial _____
NRHP Status Code 1D

Other Listings _____
 Review Code _____ Reviewer _____ Date _____

Page 1 of 1 *Resource Name or #: (Assigned by recorder) 52nd Place Historic District

P1. Other Identifier: _____

*P2. Location: Not for Publication Unrestricted

*a. County Los Angeles and (P2c, P2e, and P2b or P2d. Attach a Location Map as necessary.)

*b. USGS 7.5' Quad _____ Date _____ T _____; R _____; _____ of _____ of Sec _____; _____ B.M.

c. Address 745 E. 52nd Place City Los Angeles Zip 90011

d. UTM: (Give more than one for large and/or linear resources) Zone _____, _____ mE/ _____ mN

e. Other Locational Data: (e.g., parcel #, directions to resource, elevation, etc., as appropriate)

APN # 5103-003-023

*P3a. Description: (Describe resource and its major elements. Include design, materials, condition, alterations, size, setting, and boundaries)

A cross-gabled roof with overhanging eaves and exposed rafter tails covers this one-story bungalow. The front gable extends from the west end of the primary (south) façade to cover the porch. Although a portion of the porch has been enclosed with clapboard. The main portion of the house is sheathed with alternating rows of thin and medium width wood siding. The front gable's rafter tails correspond to the king post and knee braces that extend a little below the tie beam. The porch supports are brick piers in the lower half and wood beam in the upper half. Steps lead to the door that is to the west of a tripartite window with a fixed single pane topped by a divided transom and flanked by casements. The chimney on the western elevation has been stuccoed. ALTERED CONTRIBUTING

*P3b. Resource Attributes: (List attributes and codes) HP2-Single Family Property

*P4. Resources Present: Building Structure Object Site District Element of District Other (Isolates, etc.)

P5b. Description of Photo: (view, date, accession #) June 2008

south elevation

*P6. Date Constructed/Age and

Source: Historic Prehistoric

Both

1911/19 Tax Assessor

*P7. Owner and Address:

Juan Jerez

745 E. 52nd Pl.

LA 90011

*P8. Recorded by: (Name, affiliation, and address) Teresa Grimes and

Christina Chiang; CAJA

523 W. 6th Street, Suite 1134

Los Angeles, CA 90014

*P9. Date Recorded: 1/5/09

*P10. Survey Type: (Describe)

Intensive



*P11. Report Citation: (Cite survey report and other sources, or enter "none.") 52nd Place Historic Resource Survey

*Attachments: NONE Location Map Continuation Sheet Building, Structure, and Object Record

Archaeological Record District Record Linear Feature Record Milling Station Record Rock Art Record

Artifact Record Photograph Record Other (List): _____

State of California The Resources Agency
 DEPARTMENT OF PARKS AND RECREATION
PRIMARY RECORD

Primary # _____
 HRI # _____
 Trinomial _____
NRHP Status Code 1D

Other Listings _____
 Review Code _____ Reviewer _____ Date _____

Page 1 of 1 *Resource Name or #: (Assigned by recorder) 52nd Place Historic District

P1. Other Identifier: _____

*P2. Location: Not for Publication Unrestricted

*a. County Los Angeles and (P2c, P2e, and P2b or P2d. Attach a Location Map as necessary.)

*b. USGS 7.5' Quad _____ Date _____ T ____; R ____; _____ of _____ of Sec ____; _____ B.M.

c. Address 750 E. 52nd Place City Los Angeles Zip 90011

d. UTM: (Give more than one for large and/or linear resources) Zone _____, _____ mE/ _____ mN

e. Other Locational Data: (e.g., parcel #, directions to resource, elevation, etc., as appropriate)

APN # 5103-006-028

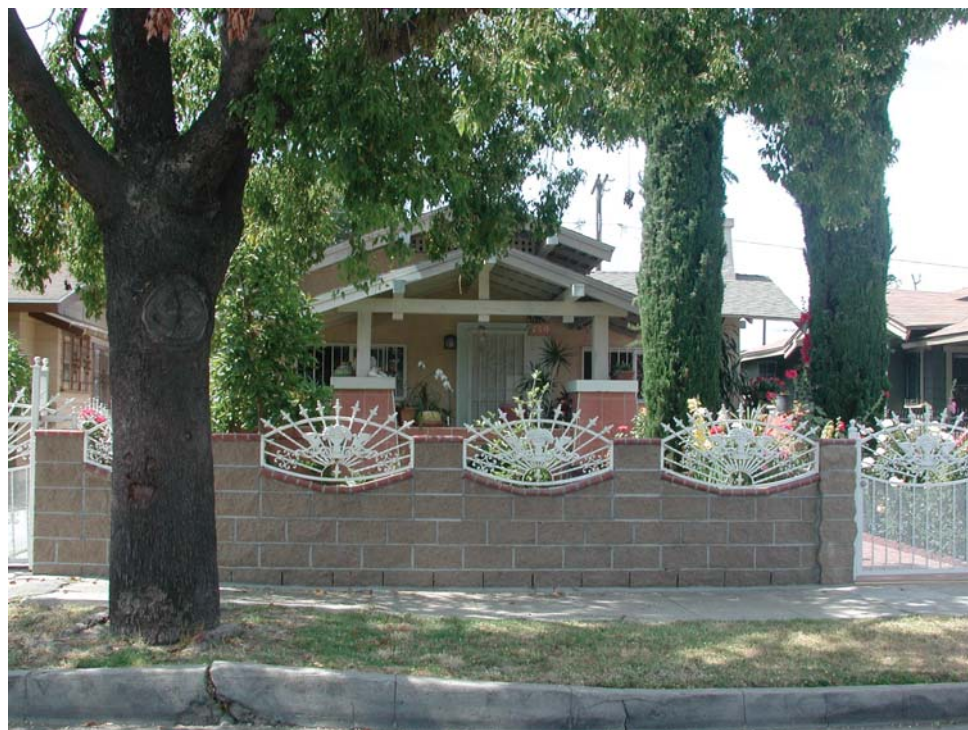
*P3a. Description: (Describe resource and its major elements. Include design, materials, condition, alterations, size, setting, and boundaries)

This one-story bungalow has some alterations. The exterior has been stuccoed and the windows have been replaced. Original design features include the roof configuration, exposed rafter tails, porch pedestals and chimney.

ALTERED-CONTRIBUTING

*P3b. Resource Attributes: (List attributes and codes) HP2-Single Family Property

*P4. Resources Present: Building Structure Object Site District Element of District Other (Isolates, etc.)



P5b. Description of Photo: (view, date, accession #) June 2008
north elevation

*P6. Date Constructed/Age and

Source: Historic Prehistoric
 Both

1911/40 Tax Assessor

*P7. Owner and Address:

Maria Mijares
750 E. 52nd Pl.
LA 90011

*P8. Recorded by: (Name, affiliation, and address) Teresa Grimes and

Christina Chiang; CAJA
523 W. 6th Street, Suite 1134
Los Angeles, CA 90014

*P9. Date Recorded: 1/5/09, 8/6/14
updtd by Shannon Ryan DCP

*P10. Survey Type: (Describe)
Intensive

*P11. Report Citation: (Cite survey report and other sources, or enter "none.") 52nd Place Historic Resource Survey

*Attachments: NONE Location Map Continuation Sheet Building, Structure, and Object Record

Archaeological Record District Record Linear Feature Record Milling Station Record Rock Art Record

Artifact Record Photograph Record Other (List): _____

State of California The Resources Agency
DEPARTMENT OF PARKS AND RECREATION
PRIMARY RECORD

Primary # _____
HRI # _____
Trinomial _____
NRHP Status Code 1D

Other Listings _____
Review Code _____ Reviewer _____ Date _____

Page 1 of 1 *Resource Name or #: (Assigned by recorder) 52nd Place Historic District

P1. Other Identifier: _____

*P2. Location: Not for Publication Unrestricted

*a. County Los Angeles and (P2c, P2e, and P2b or P2d. Attach a Location Map as necessary.)

*b. USGS 7.5' Quad _____ Date _____ T _____; R _____; _____ of _____ of Sec _____; _____ B.M.

c. Address 751 E. 52nd Place City Los Angeles Zip 90011

d. UTM: (Give more than one for large and/or linear resources) Zone _____, _____ mE/ _____ mN

e. Other Locational Data: (e.g., parcel #, directions to resource, elevation, etc., as appropriate)

APN # 5103-003-022

*P3a. Description: (Describe resource and its major elements. Include design, materials, condition, alterations, size, setting, and boundaries)

This side-gabled, one-story bungalow has overhanging eaves and exposed rafter tails. It has a shallowly cross-gabled front on the western side that intersects the porch roof with a low-pitched, extended roof. The porch roof emerges from the lower third of the main side gable. An extended horizontal beam is set into the porch's shed roof and over the two, symmetrical porch supports. A low-stuccoed porch wall with brick trimming connects the two pedestals to enclose the porch. Centered under the porch is the main entrance flanked on either side by large sliding windows. The chimney and exterior walls have been stuccoed over. ALTERED-CONTRIBUTING

*P3b. Resource Attributes: (List attributes and codes) HP2-Single Family Property

*P4. Resources Present: Building Structure Object Site District Element of District Other (Isolates, etc.)

P5b. Description of Photo: (view, date, accession #) June 2014

south elevation

*P6. Date Constructed/Age and

Source: Historic Prehistoric

Both

1911/20 Tax Accessor

*P7. Owner and Address:

Garry C. Ridley

751 E. 52nd

LA 90011

*P8. Recorded by: (Name, affiliation, and address) Teresa Grimes and

Christina Chiang, CAJA

523 W. 6th Street, Suite 1134

Los Angeles, CA 90014

*P9. Date Recorded: 1/5/09, 7/30

/14 updt'd by Shannon Ryan DCP

*P10. Survey Type: (Describe)

Intensive

*P11. Report Citation: (Cite survey report and other sources, or enter "none.") 52nd Place Historic Resource Survey

*Attachments: NONE Location Map Continuation Sheet Building, Structure, and Object Record

Archaeological Record District Record Linear Feature Record Milling Station Record Rock Art Record

Artifact Record Photograph Record Other (List): _____

State of California The Resources Agency
 DEPARTMENT OF PARKS AND RECREATION
PRIMARY RECORD

Primary # _____
 HRI # _____
 Trinomial _____
NRHP Status Code 1D

Other Listings _____
 Review Code _____ Reviewer _____ Date _____

Page 1 of 1 *Resource Name or #: (Assigned by recorder) 52nd Place Historic District

P1. Other Identifier: _____

*P2. Location: Not for Publication Unrestricted

*a. County Los Angeles and (P2c, P2e, and P2b or P2d. Attach a Location Map as necessary.)

*b. USGS 7.5' Quad _____ Date _____ T _____; R _____; _____ of _____ of Sec _____; _____ B.M.

c. Address 756 E. 52nd Place City Los Angeles Zip 90011

d. UTM: (Give more than one for large and/or linear resources) Zone _____, _____ mE/ _____ mN

e. Other Locational Data: (e.g., parcel #, directions to resource, elevation, etc., as appropriate)

APN # 5103-006-029

*P3a. Description: (Describe resource and its major elements. Include design, materials, condition, alterations, size, setting, and boundaries)

This one-story bungalow is sheathed with alternating rows of thin and medium width siding and covered by a side-gabled roof that extends over the porch. Overhanging eaves, exposed rafter tails, and a central shed dormer with a waffle vent characterize the roof. Painted river rock porch pedestals are united by a low wall of the same material. The upper halves of the symmetrical porch supports are two wood posts crossed by a horizontal beam. A concrete walkway then five steps leads to the main entrance. Rectangular windows flank the door. The battered door and window frames are original, however, a couple of the casement windows have been replaced. The east end of the porch was enclosed in 1957. The iron fence surrounding the yard is a recent addition.

ALTERED CONTRIBUTING

*P3b. Resource Attributes: (List attributes and codes) HP2-Single Family Property

*P4. Resources Present: Building Structure Object Site District Element of District Other (Isolates, etc.)

P5b. Description of Photo: (view, date, accession #) June 2008

north elevation

*P6. Date Constructed/Age and

Source: Historic Prehistoric

Both

1911/19 Tax Assessor

*P7. Owner and Address:

Eva Ridley

756 E. 52nd Pl.

LA 90011

*P8. Recorded by: (Name, affiliation, and address) Teresa Grimes and

Christina Chiang; CAJA

523 W. 6th Street, Suite 1134

Los Angeles, CA 90014

*P9. Date Recorded: 1/5/09

*P10. Survey Type: (Describe)

Intensive



*P11. Report Citation: (Cite survey report and other sources, or enter "none.") 52nd Place Historic Resource Survey

*Attachments: NONE Location Map Continuation Sheet Building, Structure, and Object Record

Archaeological Record District Record Linear Feature Record Milling Station Record Rock Art Record

Artifact Record Photograph Record Other (List): _____

State of California The Resources Agency
 DEPARTMENT OF PARKS AND RECREATION
PRIMARY RECORD

Primary # _____
 HRI # _____
 Trinomial _____
NRHP Status Code 1D

Other Listings _____
 Review Code _____ Reviewer _____ Date _____

Page 1 of 1 *Resource Name or #: (Assigned by recorder) 52nd Place Historic District

P1. Other Identifier: _____

*P2. Location: Not for Publication Unrestricted

- *a. County Los Angeles and (P2c, P2e, and P2b or P2d. Attach a Location Map as necessary.)
- *b. USGS 7.5' Quad _____ Date _____ T _____; R _____; _____ of _____ of Sec _____; _____ B.M.
- c. Address 759 E. 52nd Place City Los Angeles Zip 90011
- d. UTM: (Give more than one for large and/or linear resources) Zone _____, _____ mE/ _____ mN
- e. Other Locational Data: (e.g., parcel #, directions to resource, elevation, etc., as appropriate)
 APN #5103-003-021

*P3a. Description: (Describe resource and its major elements. Include design, materials, condition, alterations, size, setting, and boundaries)

This one-story bungalow is covered by a front-facing gabled roof and sheathed with clapboard. Overhanging eaves, exposed rafter tails, and a large lattice vent characterize the roof. The porch is tucked under the western end of the primary (south) façade. Originally it extended across the full-width of the house, but the eastern end was enclosed in 1957. A battered pedestal and low wall define the edge of the porch and are made of clinker brick spotted with river rock. The upper part of the porch support consists of a design of wooden beams that intersect with each other and a splayed arm facing the east. The chimney, also of river rock and clinker brick, on the western elevation has been truncated above the roof. The entrance is located at the top of a short flight of concrete steps.
 ALTERED CONTRIBUTING

*P3b. Resource Attributes: (List attributes and codes) HP2-Single Family Property

*P4. Resources Present: Building Structure Object Site District Element of District Other (Isolates, etc.)



P5b. Description of Photo: (view, date, accession #) June 2008
south elevation

*P6. Date Constructed/Age and Source: Historic Prehistoric
 Both
1911/19 Tax Assessor

*P7. Owner and Address:
Rosa Sotelo
759 E. 52nd Pl.
LA 90011

*P8. Recorded by: (Name, affiliation, and address) Teresa Grimes and
Christina Chiang; CAJA
523 W. 6th Street, Suite 1134
Los Angeles, CA 90014

*P9. Date Recorded: 1/5/09

*P10. Survey Type: (Describe)
Intensive

*P11. Report Citation: (Cite survey report and other sources, or enter "none.") 52nd Place Historic Resource Survey

*Attachments: NONE Location Map Continuation Sheet Building, Structure, and Object Record
 Archaeological Record District Record Linear Feature Record Milling Station Record Rock Art Record
 Artifact Record Photograph Record Other (List): _____

State of California The Resources Agency
 DEPARTMENT OF PARKS AND RECREATION
PRIMARY RECORD

Primary # _____
 HRI # _____
 Trinomial _____
NRHP Status Code 1D

Other Listings _____
 Review Code _____ Reviewer _____ Date _____

Page 1 of 1 *Resource Name or #: (Assigned by recorder) 52nd Place Historic District

P1. Other Identifier: _____

*P2. Location: Not for Publication Unrestricted

*a. County Los Angeles and (P2c, P2e, and P2b or P2d. Attach a Location Map as necessary.)

*b. USGS 7.5' Quad _____ Date _____ T _____; R _____; _____ of _____ of Sec _____; _____ B.M.

c. Address 762 E. 52nd Place City Los Angeles Zip 90011

d. UTM: (Give more than one for large and/or linear resources) Zone _____, _____ mE/ _____ mN

e. Other Locational Data: (e.g., parcel #, directions to resource, elevation, etc., as appropriate)

APN # 5103-006-030

*P3a. Description: (Describe resource and its major elements. Include design, materials, condition, alterations, size, setting, and boundaries)

This one-story, wood shingled bungalow has a low-pitched porch roof that extends out of the middle of a side-gabled roof. The roofs are characterized by overhanging eaves and exposed rafter tails. Wood posts top the battered porch pedestals. A low wall that is stuccoed like the pedestals encloses the porch. The main entrance is located at the top of a short flight of concrete steps. The door is set between two large window openings. The one to the east consists of a group of three casement windows. The one to the west is has a three-part design with a large fixed single pane flanked by multi-paned casements. The driveway on the eastern side of the house is in two rows for the car tires. CONTRIBUTING

*P3b. Resource Attributes: (List attributes and codes) HP2-Single Family Property

*P4. Resources Present: Building Structure Object Site District Element of District Other (Isolates, etc.)



P5b. Description of Photo: (view, date, accession #) June 2008
north elevation

*P6. Date Constructed/Age and Source: Historic Prehistoric
 Both
1911/19 Tax Assessor

*P7. Owner and Address:
United CA Bank Trust-Giselle Vasquez Spec. Needs Trust
601 FigueroaW10-3 LA90017

*P8. Recorded by: (Name, affiliation, and address) Teresa Grimes and Christina Chiang; CAJA
523 W. 6th Street, Suite 1134
Los Angeles, CA 90014

*P9. Date Recorded: 1/5/09

*P10. Survey Type: (Describe)
Intensive

*P11. Report Citation: (Cite survey report and other sources, or enter "none.") 52nd Place Historic Resource Survey

*Attachments: NONE Location Map Continuation Sheet Building, Structure, and Object Record
 Archaeological Record District Record Linear Feature Record Milling Station Record Rock Art Record
 Artifact Record Photograph Record Other (List): _____

State of California The Resources Agency
 DEPARTMENT OF PARKS AND RECREATION
PRIMARY RECORD

Primary # _____
 HRI # _____
 Trinomial _____
NRHP Status Code 1D

Other Listings _____
 Review Code _____ Reviewer _____ Date _____

Page 1 of 1 *Resource Name or #: (Assigned by recorder) 52nd Place Historic District

P1. Other Identifier: _____

*P2. Location: Not for Publication Unrestricted

*a. County Los Angeles and (P2c, P2e, and P2b or P2d. Attach a Location Map as necessary.)

*b. USGS 7.5' Quad _____ Date _____ T _____; R _____; _____ of _____ of Sec _____; _____ B.M.

c. Address 765 E. 52nd Place City Los Angeles Zip 90011

d. UTM: (Give more than one for large and/or linear resources) Zone _____, _____ mE/ _____ mN

e. Other Locational Data: (e.g., parcel #, directions to resource, elevation, etc., as appropriate)

APN # 5103-003-020

*P3a. Description: (Describe resource and its major elements. Include design, materials, condition, alterations, size, setting, and boundaries)

This one-story bungalow is covered by a front-facing gabled roof and sheathed with clapboard. A lower front-gabled roof projects over the porch. Both roofs have a low pitch, overhanging eaves, exposed rafter tails, and vertical slat vents. The porch pedestals and low wall are made of river rock. The upper parts of the symmetrical porch supports are two wood posts that meet the tie beam. Four concrete steps lead to the main entrance, which is flanked by two large, tripartite windows. The window on the east is wider than the western one. The architrave trim is original, although the windows have been replaced. The chimney, also of river rock, on the western elevation has been truncated above the roof. The driveway on the western side of the house is in two rows for the car tires.

CONTRIBUTING

*P3b. Resource Attributes: (List attributes and codes) HP2-Single Family Property

*P4. Resources Present: Building Structure Object Site District Element of District Other (Isolates, etc.)

P5b. Description of Photo: (view, date, accession #) June 2008

south elevation

*P6. Date Constructed/Age and

Source: Historic Prehistoric

Both

1911/19 Tax Assessor

*P7. Owner and Address:

Santos del Carmen Borjas

765 E. 52nd Pl.

LA 90011

*P8. Recorded by: (Name, affiliation,

and address) Teresa Grimes and

Christina Chiang; CAJA

523 W. 6th Street, Suite 1134

Los Angeles, CA 90014

*P9. Date Recorded: 1/5/09

*P10. Survey Type: (Describe)

Intensive



*P11. Report Citation: (Cite survey report and other sources, or enter "none.") 52nd Place Historic Resource Survey

*Attachments: NONE Location Map Continuation Sheet Building, Structure, and Object Record

Archaeological Record District Record Linear Feature Record Milling Station Record Rock Art Record

Artifact Record Photograph Record Other (List): _____

State of California The Resources Agency
 DEPARTMENT OF PARKS AND RECREATION
PRIMARY RECORD

Primary # _____
 HRI # _____
 Trinomial _____
NRHP Status Code 1D

Other Listings _____
 Review Code _____ Reviewer _____ Date _____

Page 1 of 1 *Resource Name or #: (Assigned by recorder) 52nd Place Historic District

P1. Other Identifier: _____

*P2. Location: Not for Publication Unrestricted

*a. County Los Angeles and (P2c, P2e, and P2b or P2d. Attach a Location Map as necessary.)

*b. USGS 7.5' Quad _____ Date _____ T _____; R _____; _____ of _____ of Sec _____; _____ B.M.

c. Address 768 E. 52nd Place City Los Angeles Zip 90011

d. UTM: (Give more than one for large and/or linear resources) Zone _____, _____ mE/ _____ mN

e. Other Locational Data: (e.g., parcel #, directions to resource, elevation, etc., as appropriate)

APN # 5103-006-031

*P3a. Description: (Describe resource and its major elements. Include design, materials, condition, alterations, size, setting, and boundaries)

A multi-gabled roof with a steeper-pitched roof above the porch's roof covers this one-story clapboarded bungalow. The top gable only extends halfway down the house's western side, where there is also a cross-gable. The porch gable has two extended post beams at the ends that lie just on top of the tie beam and correspond to two wood posts. These wood posts are the upper part of the symmetrical porch supports. The lower parts are stuccoed pedestals. A low wall encloses the porch and angles out to meet the concrete steps to the main entrance. The door is offset to the west and flanked by long rectangular windows. The architrave trim is original, but the windows have been replaced. Iron window grilles and a fence lining the sidewalk are recent additions. CONTRIBUTING

*P3b. Resource Attributes: (List attributes and codes) HP2-Single Family Property

*P4. Resources Present: Building Structure Object Site District Element of District Other (Isolates, etc.)

P5b. Description of Photo: (view, date, accession #) June 2008

north elevation

*P6. Date Constructed/Age and

Source: Historic Prehistoric

Both

1911/19 Tax Assessor

*P7. Owner and Address:

Daisy Vasquez

765 E. 52nd Pl.

LA 90011

*P8. Recorded by: (Name, affiliation,

and address) Teresa Grimes and

Christina Chiang; CAJA

523 W. 6th Street, Suite 1134

Los Angeles, CA 90014

*P9. Date Recorded: 1/5/09

*P10. Survey Type: (Describe)

Intensive



*P11. Report Citation: (Cite survey report and other sources, or enter "none.") 52nd Place Historic Resource Survey

*Attachments: NONE Location Map Continuation Sheet Building, Structure, and Object Record

Archaeological Record District Record Linear Feature Record Milling Station Record Rock Art Record

Artifact Record Photograph Record Other (List): _____

State of California The Resources Agency
 DEPARTMENT OF PARKS AND RECREATION
PRIMARY RECORD

Primary # _____
 HRI # _____
 Trinomial _____
NRHP Status Code 1D

Other Listings _____
 Review Code _____ Reviewer _____ Date _____

Page 1 of 1 *Resource Name or #: (Assigned by recorder) 52nd Place Historic District

P1. Other Identifier: _____

*P2. Location: Not for Publication Unrestricted

*a. County Los Angeles and (P2c, P2e, and P2b or P2d. Attach a Location Map as necessary.)

*b. USGS 7.5' Quad _____ Date _____ T _____; R _____; _____ of _____ of Sec _____; _____ B.M.

c. Address 773 E. 52nd Place City Los Angeles Zip 90011

d. UTM: (Give more than one for large and/or linear resources) Zone _____, _____ mE/ _____ mN

e. Other Locational Data: (e.g., parcel #, directions to resource, elevation, etc., as appropriate)

APN # 5103-003-031

*P3a. Description: (Describe resource and its major elements. Include design, materials, condition, alterations, size, setting, and boundaries)

This one-story bungalow is sheathed with long wood shingles and covered by a cross-gabled roof. The front gable extends from the west end of the primary (south) façade to cover the porch. The gable end is simply a cross beam and king post. Overhanging eaves, exposed rafter tails, and vertical slat vents characterize the roof. Wood posts with knee braces are the upper part of the symmetrical porch supports. The lower parts are stuccoed pedestals that step down. The main entrance is located at the top of a short flight of wide concrete steps. West of the door is band of casement windows divided in the upper portions. There is a stuccoed chimney on the west elevation. The porch on the east end of the facade was added in 1920, but enclosed at a later date. ALTERED CONTRIBUTING

*P3b. Resource Attributes: (List attributes and codes) HP2-Single Family Property

*P4. Resources Present: Building Structure Object Site District Element of District Other (Isolates, etc.)



P5b. Description of Photo: (view, date, accession #) June 2008

south elevation

*P6. Date Constructed/Age and

Source: Historic Prehistoric

Both

1911/19 Tax Assessor

*P7. Owner and Address:

Wendell & Rachel Fields

773 E. 52nd Pl.

LA 90011

*P8. Recorded by: (Name, affiliation,

and address) Teresa Grimes and

Christina Chiang; CAJA

523 W. 6th Street, Suite 1134

Los Angeles, CA 90014

*P9. Date Recorded: 1/5/09

*P10. Survey Type: (Describe)

Intensive

*P11. Report Citation: (Cite survey report and other sources, or enter "none.") 52nd Place Historic Resource Survey

*Attachments: NONE Location Map Continuation Sheet Building, Structure, and Object Record

Archaeological Record District Record Linear Feature Record Milling Station Record Rock Art Record

Artifact Record Photograph Record Other (List): _____

State of California The Resources Agency
 DEPARTMENT OF PARKS AND RECREATION
PRIMARY RECORD

Primary # _____
 HRI # _____
 Trinomial _____
 NRHP Status Code 1D/5S1
 Other Listings LAHCM #726
 Review Code _____ Reviewer _____ Date _____

Page 1 of 2 *Resource Name or #: (Assigned by recorder) 52nd Place Historic District

P1. Other Identifier: Residence of Gilbert Lindsay

*P2. Location: Not for Publication Unrestricted

*a. County Los Angeles and (P2c, P2e, and P2b or P2d. Attach a Location Map as necessary.)

*b. USGS 7.5' Quad _____ Date _____ T _____; R _____; _____ of _____ of Sec _____; _____ B.M.

c. Address 774 E. 52nd Place City Los Angeles Zip 90011

d. UTM: (Give more than one for large and/or linear resources) Zone _____, _____ mE/ _____ mN

e. Other Locational Data: (e.g., parcel #, directions to resource, elevation, etc., as appropriate)
 APN # 5103-006-032

*P3a. Description: (Describe resource and its major elements. Include design, materials, condition, alterations, size, setting, and boundaries)

This one-story bungalow is very simple in plan and design. It is sheathed with long wood shingles and covered by a front-facing gabled roof. The primary (south) façade is symmetrically organized. The roof projects over the porch that extends across the full-width of the primary (north) façade. It is characterized by overhanging eaves, exposed rafter tails, and lattice vent. Centered under the porch is the main entrance. Two symmetrical porch pedestals and a low porch wall are stuccoed. The pedestals are massive and rise to meet the cross beam over the porch. The windows are obscured from view by a non-original concrete block wall the partially encloses the eastern end of the porch. The front yard has been paved over. CONTRIBUTING

*P3b. Resource Attributes: (List attributes and codes) HP2-Single Family Property

*P4. Resources Present: Building Structure Object Site District Element of District Other (Isolates, etc.)

P5b. Description of Photo: (view, date, accession #) January 2009
north elevation

*P6. Date Constructed/Age and Source: Historic Prehistoric
 Both
1911/12 Tax Assessor

*P7. Owner and Address:
Alejandro Soria
774 E. 52nd Pl.
LA 90011

*P8. Recorded by: (Name, affiliation, and address) Teresa Grimes and
Christina Chiang; CAJA
523 W. 6th Street, Suite 1134
Los Angeles, CA 90014

*P9. Date Recorded: 1/5/09

*P10. Survey Type: (Describe)
Intensive



*P11. Report Citation: (Cite survey report and other sources, or enter "none.") 52nd Place Historic Resource Survey

*Attachments: NONE Location Map Continuation Sheet Building, Structure, and Object Record
 Archaeological Record District Record Linear Feature Record Milling Station Record Rock Art Record
 Artifact Record Photograph Record Other (List): _____

BUILDING, STRUCTURE, AND OBJECT RECORD

*NRHP Status Code 1D/5S1

Page 2 of 2 *Resource Name or # (Assigned by recorder) 52nd Place Historic District

B1. Historic Name: 774 E. 52nd Place

B2. Common Name: None

B3. Original Use: Single-family Residence B4. Present Use: Single-family Residence

*B5. Architectural Style: Craftsman

*B6. Construction History: (Construction date, alterations, and date of alterations)

1911/12 constructed

*B7. Moved? No Yes Unknown Date: _____ Original Location: _____

*B8. Related Features:

B9a. Architect: None b. Builder: Tifal Brothers

*B10. Significance: Theme Ethnic History and Architecture Area Los Angeles

Period of Significance 1911-1958 Property Type Residence Applicable Criteria A & C

(Discuss importance in terms of historical or architectural context as defined by theme, period, and geographic scope. Also address integrity.)

774 E. 52nd Place was the home of Gilbert Lindsay (1900-1990) during the 1970s and 80s. During the 1940s, Lindsay was the manager/owner of Bilbrew and Lindsay Productions, which produced the pioneering broadcasts of the "Bronze Hour" on KGFJ Radio. The program's announcer, Mrs. A.C. Bilbrew was prominent in Los Angeles choral music circles. In 1952, Lindsay joined the campaign of Kenneth Hahn for Los Angeles County Supervisor, and joined his staff after Hahn was elected. In 1962, Lindsay became the first African American to serve on the Los Angeles City Council in the modern era. His connection to Hahn led to his appointment to fill a vacancy left on the City Council when Edward Roybal was elected to Congress. Just a few months later, Lindsay was joined on the City Council by Tom Bradley and Billy G. Mills, bringing the total number of African American members to three. Lindsay held the post until his death at age 90. The house is designated Los Angeles Historic-Cultural Monument #726.

B11. Additional Resource Attributes: (List attributes and codes) _____

*B12. References:

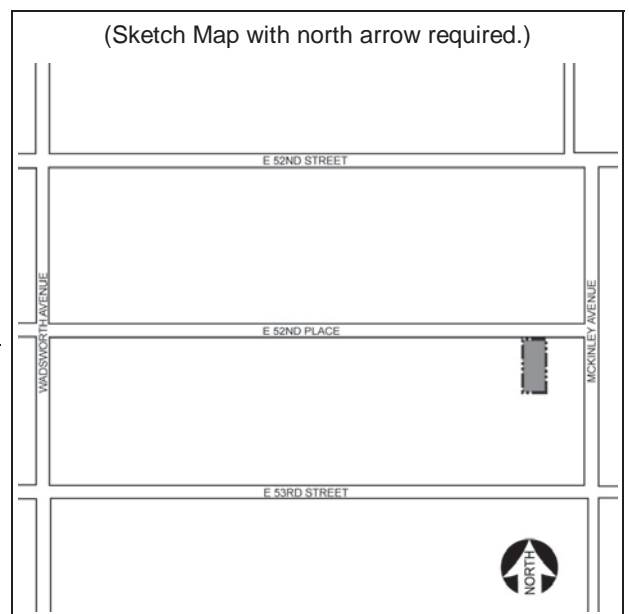
Multiple Property Documentation Form, Historic Resources Associated with African Americans in Los Angeles, 2008

B13. Remarks:

*B14. Evaluator: Teresa Grimes

*Date of Evaluation: 1/5/09

(This space reserved for official comments.)



State of California The Resources Agency
DEPARTMENT OF PARKS AND RECREATION
PRIMARY RECORD

Primary # _____
HRI # _____
Trinomial _____
NRHP Status Code 6Z

Other Listings _____
Review Code _____ Reviewer _____ Date _____

Page 1 of 1 *Resource Name or #: (Assigned by recorder) 52nd Place Historic District

P1. Other Identifier: _____

*P2. Location: Not for Publication Unrestricted

*a. County Los Angeles and (P2c, P2e, and P2b or P2d. Attach a Location Map as necessary.)

*b. USGS 7.5' Quad _____ Date _____ T ____; R ____; _____ of _____ of Sec ____; _____ B.M.

c. Address 779 E. 52nd Place City Los Angeles Zip 90011

d. UTM: (Give more than one for large and/or linear resources) Zone ____, _____ mE/ _____ mN

e. Other Locational Data: (e.g., parcel #, directions to resource, elevation, etc., as appropriate)

APN # 5103-003-017

*P3a. Description: (Describe resource and its major elements. Include design, materials, condition, alterations, size, setting, and boundaries)

This one-story bungalow has been extensively altered. The exterior has been stuccoed and the windows have been replaced.

NON-CONTRIBUTING

*P3b. Resource Attributes: (List attributes and codes) HP2-Single Family Property

*P4. Resources Present: Building Structure Object Site District Element of District Other (Isolates, etc.)

P5b. Description of Photo: (view, date, accession #) June 2008

*P6. Date Constructed/Age and Source: Historic Prehistoric
 Both

*P7. Owner and Address:
Rene & Maricela Barrera
779 E. 52nd Pl.
LA 90011

*P8. Recorded by: (Name, affiliation, and address) Teresa Grimes and
Christina Chiang; CAJA
523 W. 6th Street, Suite 1134
Los Angeles, CA 90014

*P9. Date Recorded: 1/5/09

*P10. Survey Type: (Describe)
Intensive

*P11. Report Citation: (Cite survey report and other sources, or enter "none.") 52nd Place Historic Resource Survey

*Attachments: NONE Location Map Continuation Sheet Building, Structure, and Object Record
 Archaeological Record District Record Linear Feature Record Milling Station Record Rock Art Record
 Artifact Record Photograph Record Other (List): _____

State of California The Resources Agency
 DEPARTMENT OF PARKS AND RECREATION
PRIMARY RECORD

Primary # _____
 HRI # _____
 Trinomial _____
NRHP Status Code 1D

Other Listings _____
 Review Code _____ Reviewer _____ Date _____

Page 1 of 1 *Resource Name or #: (Assigned by recorder) 52nd Place Historic District

P1. Other Identifier: _____

*P2. Location: Not for Publication Unrestricted

*a. County Los Angeles and (P2c, P2e, and P2b or P2d. Attach a Location Map as necessary.)

*b. USGS 7.5' Quad _____ Date _____ T _____; R _____; _____ of _____ of Sec _____; _____ B.M.

c. Address 780 E. 52nd Place City Los Angeles Zip 90011

d. UTM: (Give more than one for large and/or linear resources) Zone _____, _____ mE/ _____ mN

e. Other Locational Data: (e.g., parcel #, directions to resource, elevation, etc., as appropriate)

APN # 5103-006-033

*P3a. Description: (Describe resource and its major elements. Include design, materials, condition, alterations, size, setting, and boundaries)

This one-story bungalow is very simple in plan and design. It is sheathed with long wood shingles and covered by a front-facing gabled roof that projects over the porch. The roof is characterized by overhanging eaves, exposed rafter tails, and a lattice vent. A short flight of concrete steps leads to the main entrance. Two rectangular windows are on either side of the door. They both consist of three multi-paned double-hung sash windows. The one on the west is closer and almost touching the door frame. The architrave trim is original, but the windows have been replaced. River rock piers connected to a very low wall with brick trim on top distinguish the porch. The piers are massive and rise to meet the cross beam over the porch. CONTRIBUTING

*P3b. Resource Attributes: (List attributes and codes) HP2-Single Family Property

*P4. Resources Present: Building Structure Object Site District Element of District Other (Isolates, etc.)

P5b. Description of Photo: (view, date, accession #) June 2008
north elevation

*P6. Date Constructed/Age and

Source: Historic Prehistoric
 Both

1911/13 Tax Assessor

*P7. Owner and Address:

Ola Galloway
780 E. 52nd Pl.
LA 90011

*P8. Recorded by: (Name, affiliation, and address) Teresa Grimes and

Christina Chiang; CAJA
523 W. 6th Street, Suite 1134
Los Angeles, CA 90014

*P9. Date Recorded: 1/5/09

*P10. Survey Type: (Describe)
Intensive

*P11. Report Citation: (Cite survey report and other sources, or enter "none.") 52nd Place Historic Resource Survey

*Attachments: NONE Location Map Continuation Sheet Building, Structure, and Object Record

Archaeological Record District Record Linear Feature Record Milling Station Record Rock Art Record

Artifact Record Photograph Record Other (List): _____

State of California The Resources Agency
DEPARTMENT OF PARKS AND RECREATION
PRIMARY RECORD

Primary # _____
HRI # _____
Trinomial _____
NRHP Status Code 6Z

Other Listings _____
Review Code _____ Reviewer _____ Date _____

Page 1 of 1 *Resource Name or #: (Assigned by recorder) 52nd Place Historic District

P1. Other Identifier: _____

*P2. Location: Not for Publication Unrestricted

*a. County Los Angeles and (P2c, P2e, and P2b or P2d. Attach a Location Map as necessary.)

*b. USGS 7.5' Quad _____ Date _____ T _____; R _____; _____ of _____ of Sec _____; _____ B.M.

c. Address 788 and 790 E. 52nd Place City Los Angeles Zip 90011

d. UTM: (Give more than one for large and/or linear resources) Zone _____, _____ mE/ _____ mN

e. Other Locational Data: (e.g., parcel #, directions to resource, elevation, etc., as appropriate)

APN # 5103-006-034

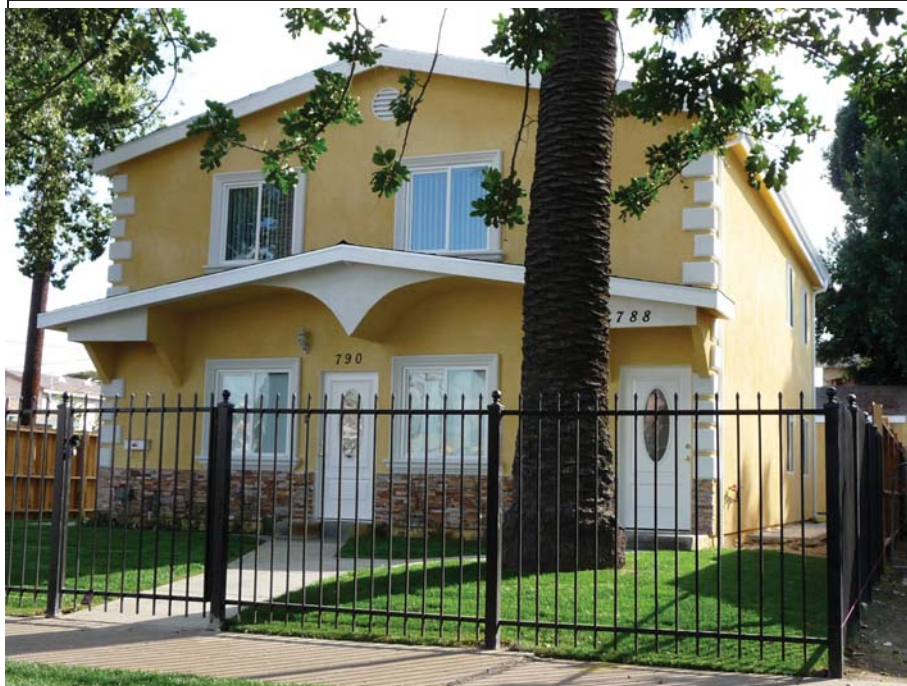
*P3a. Description: (Describe resource and its major elements. Include design, materials, condition, alterations, size, setting, and boundaries)

This two-story, multi-family home is of new construction.

NON-CONTRIBUTING

*P3b. Resource Attributes: (List attributes and codes) HP2-Single Family Property

*P4. Resources Present: Building Structure Object Site District Element of District Other (Isolates, etc.)



P5b. Description of Photo: (view, date, accession #) January 2009

north elevation

*P6. Date Constructed/Age and

Source: Historic Prehistoric

Both

2009 Building Permit

*P7. Owner and Address:

Carlos Herrera

788 E. 52nd Pl.

LA 90011

*P8. Recorded by: (Name, affiliation, and address) Teresa Grimes and

Christina Chiang; CAJA

523 W. 6th Street, Suite 1134

Los Angeles, CA 90014

*P9. Date Recorded: 2/2/09

*P10. Survey Type: (Describe)

Intensive

*P11. Report Citation: (Cite survey report and other sources, or enter "none.") 52nd Place Historic Resource Survey

*Attachments: NONE Location Map Continuation Sheet Building, Structure, and Object Record

Archaeological Record District Record Linear Feature Record Milling Station Record Rock Art Record

Artifact Record Photograph Record Other (List): _____

State of California The Resources Agency
DEPARTMENT OF PARKS AND RECREATION
PRIMARY RECORD

Primary # _____
HRI # _____
Trinomial _____
NRHP Status Code 6Z

Other Listings _____
Review Code _____ Reviewer _____ Date _____

Page 1 of 1 *Resource Name or #: (Assigned by recorder) 52nd Place Historic District

P1. Other Identifier: _____

*P2. Location: Not for Publication Unrestricted

*a. County Los Angeles and (P2c, P2e, and P2b or P2d. Attach a Location Map as necessary.)

*b. USGS 7.5' Quad _____ Date _____ T _____; R _____; _____ of _____ of Sec _____; _____ B.M.

c. Address 5212 McKinley Avenue City Los Angeles Zip 90011

d. UTM: (Give more than one for large and/or linear resources) Zone _____, _____ mE/ _____ mN

e. Other Locational Data: (e.g., parcel #, directions to resource, elevation, etc., as appropriate)

APN # 5103-003-016

*P3a. Description: (Describe resource and its major elements. Include design, materials, condition, alterations, size, setting, and boundaries)

This two-story apartment building is sheathed in stucco and has aluminum sliding windows. It was constructed in the 1920s, but has been significantly altered.

NON-CONTRIBUTING

*P3b. Resource Attributes: (List attributes and codes) HP2-Single Family Property

*P4. Resources Present: Building Structure Object Site District Element of District Other (Isolates, etc.)

P5b. Description of Photo: (view, date, accession #) June 2008

north elevation

*P6. Date Constructed/Age and

Source: Historic Prehistoric

Both

1923/24 Tax Assessor

*P7. Owner and Address:

Anna Oduntan Trust

13207 Dorsett Golden St.

Corona 92880

*P8. Recorded by: (Name, affiliation, and address) Teresa Grimes and

Christina Chiang; CAJA

523 W. 6th Street, Suite 1134

Los Angeles, CA 90014

*P9. Date Recorded: 1/5/09

*P10. Survey Type: (Describe)

Intensive

*P11. Report Citation: (Cite survey report and other sources, or enter "none.") 52nd Place Historic Resource Survey

*Attachments: NONE Location Map Continuation Sheet Building, Structure, and Object Record

Archaeological Record District Record Linear Feature Record Milling Station Record Rock Art Record

Artifact Record Photograph Record Other (List): _____