

In Los Angeles, the seven state required elements have been gradually modified to better fit the needs of the community. While the policies contained in current citywide General Plan elements are still largely relevant, they will be reviewed and repackaged into six new elements. Health, Housing, and Mobility will not be revised as part of **OurLA2040**.



OurLA2040

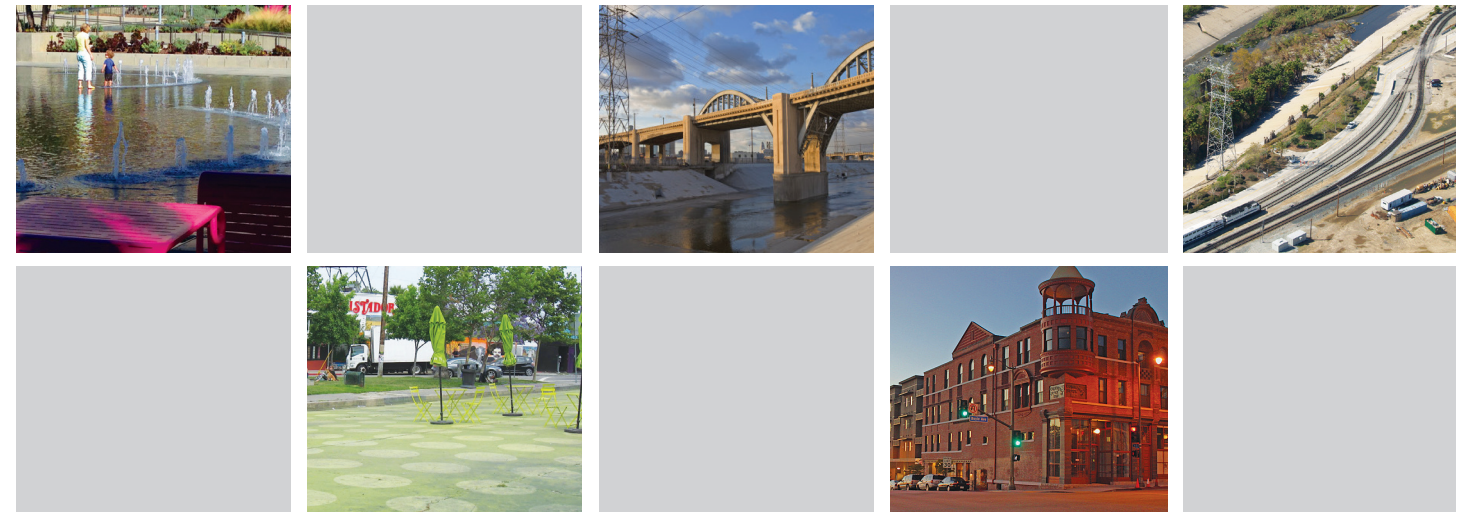
Our City. Our Future. Our Plan.



Existing Citywide General Plan Elements	Citywide General Plan Elements by 2020
Infrastructure Systems (1968-1972)	Conservation, Water, Resilience
Public Facilities and Services (1968-1980)	Community Assets, Open Space, Conservation, Water, Resilience
Historic Preservation and Cultural Resources (1969)	Community Assets
Open Space (1973)	Open Space
Air Quality (1992)	Conservation
Framework (1996)	Land Use and Economy
Safety (1996)	Resilience
Noise (1999)	Conservation
Conservation (2001)	Conservation
Housing (2013)	No Change
Health (2015)	No Change
Mobility (2016)	No Change




DEPARTMENT OF CITY PLANNING, CITYWIDE POLICY PLANNING DIVISION

City of Los Angeles General Plan



The Department of City Planning is charged with the responsibility of preparing, maintaining, and implementing a General Plan for the development of the City of Los Angeles.

The State of California requires that the General Plan include seven mandatory topics, called elements: Land Use, Open Space, Conservation, Circulation, Housing, Noise, and Safety. However, each city has the autonomy to rename, combine, break up, or even create new elements. This allows each city to customize and contextualize the General Plan to better address local needs and conditions.




#ourla2040
ourla2040@lacity.org
 Website: **ourla2040.org**

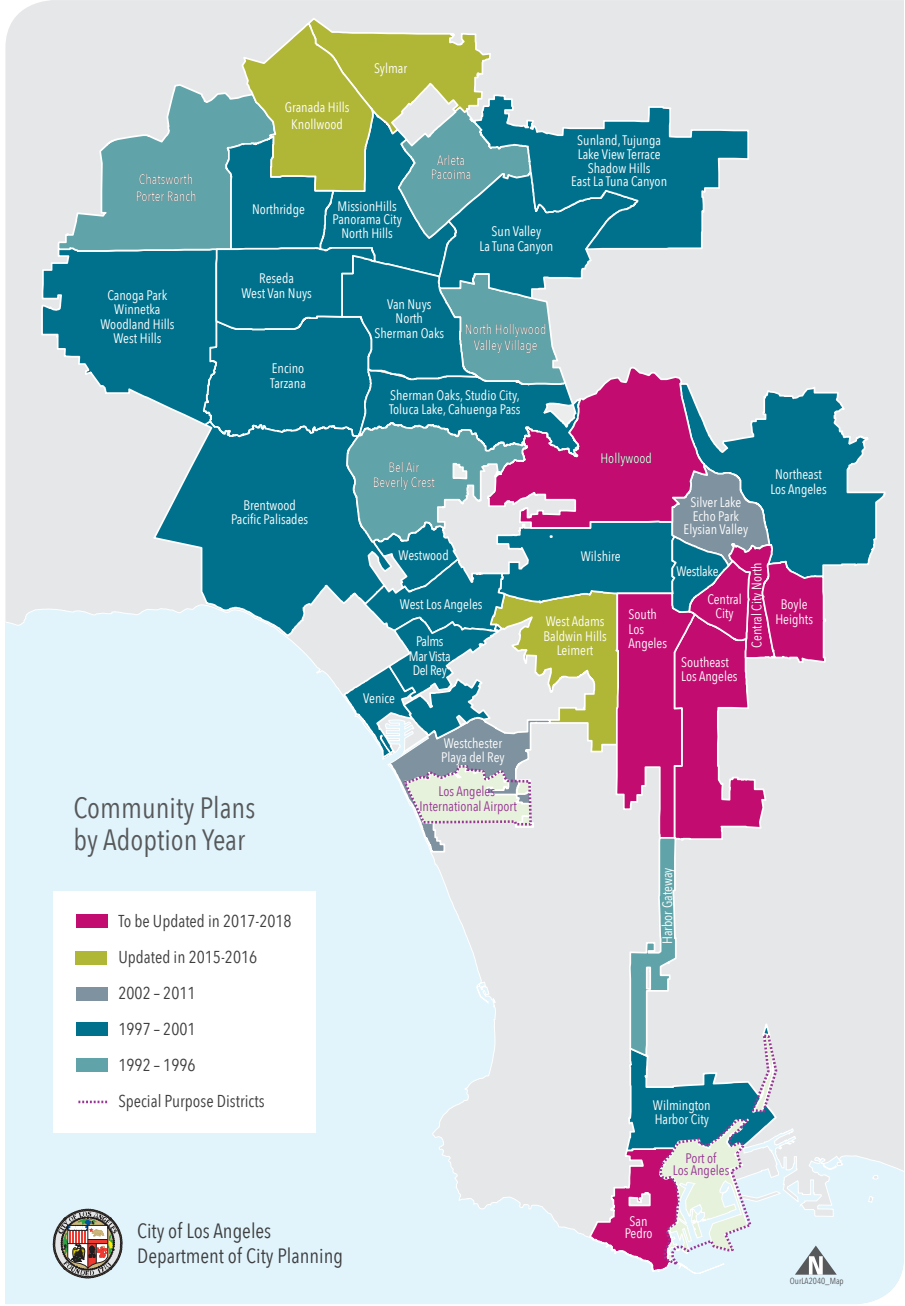
City of Los Angeles General Plan by 2020

Citywide elements and community plans are organized together to comprise the **General Plan**.

	 <p>Housing 2013</p>	 <p>Health 2015</p>	 <p>Mobility 2016</p>
OurLA2040	Land Use and Economy	Community Assets	Open Space
	Conservation	Water	Resilience

A **General Plan** is a comprehensive declaration of goals, objectives, policies, and programs that guide and establish the future form and development of the City. A General Plan typically plans for a future period of approximately 20-30 years and should be updated periodically. The City's General Plan by 2020 will include 9 citywide elements, six of which are the focus of the **OurLA2040** planning effort.

While the citywide elements frame an overarching vision that establishes citywide policies across a variety of topics, Community Plans establish complementary local policies unique to each community. The City of Los Angeles is geographically divided into 35 Community Plans and two Special Purpose Districts, Port of Los Angeles and Los Angeles World Airports, which together depict a range of allowable land uses and zoning for each parcel in the city.



Citywide Elements + Community Plans