

DTLA 2040

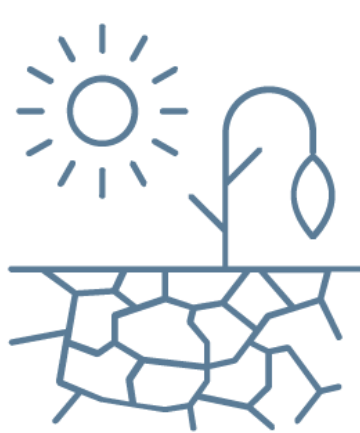
Climate Conversations

CITIES HAVE THE POWER TO FIGHT THE CLIMATE CRISIS

"Today, more than half of the world population lives in urban areas, with cities generating more than 70 percent of global greenhouse gas emissions, mostly from buildings. By 2030, world population is expected to increase by 1.1 billion people, with all of that occurring in urban areas."

CLIMATE CHANGE IS HERE IN LOS ANGELES

We can no longer plan for the future in the same way we have in the past



DROUGHT

WATER SOURCES TO LOS ANGELES (OWENS RIVER, COLORADO RIVER, AND LOCAL GROUNDWATER) ARE ALL FACING CHALLENGES IN POLLUTION AND HAVE UNPREDICTABLE FUTURE WATER SUPPLY



EXTREME HEAT

A UCLA STUDY ON CLIMATE CHANGE PROJECTIONS IN THE LOS ANGELES REGION CONCLUDES THAT THE NUMBER OF DAYS WARMER THAN 95 DEGREES COULD TRIPLE IN DTLA BY 2050



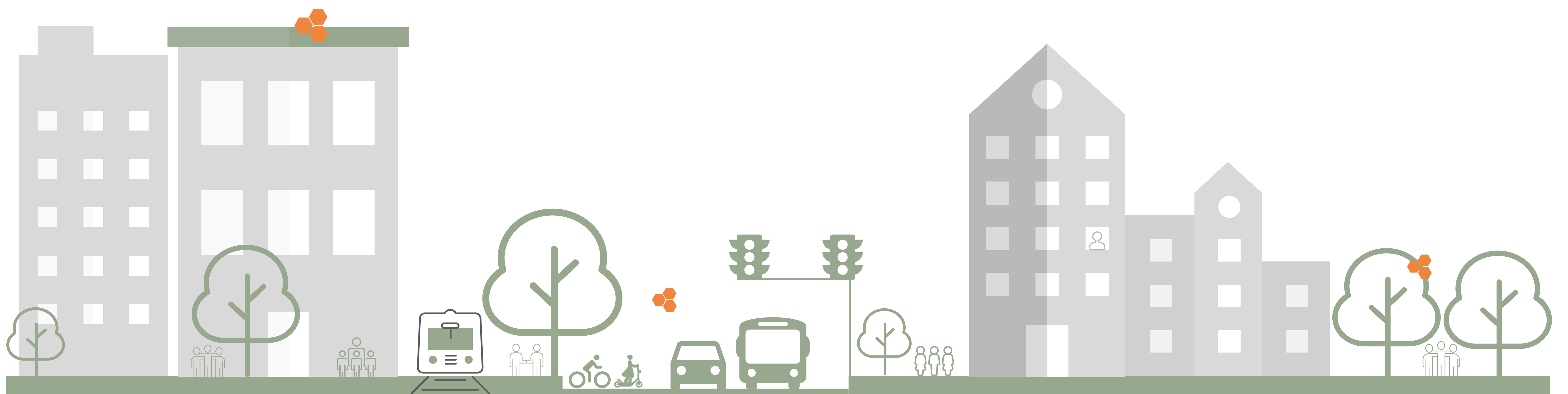
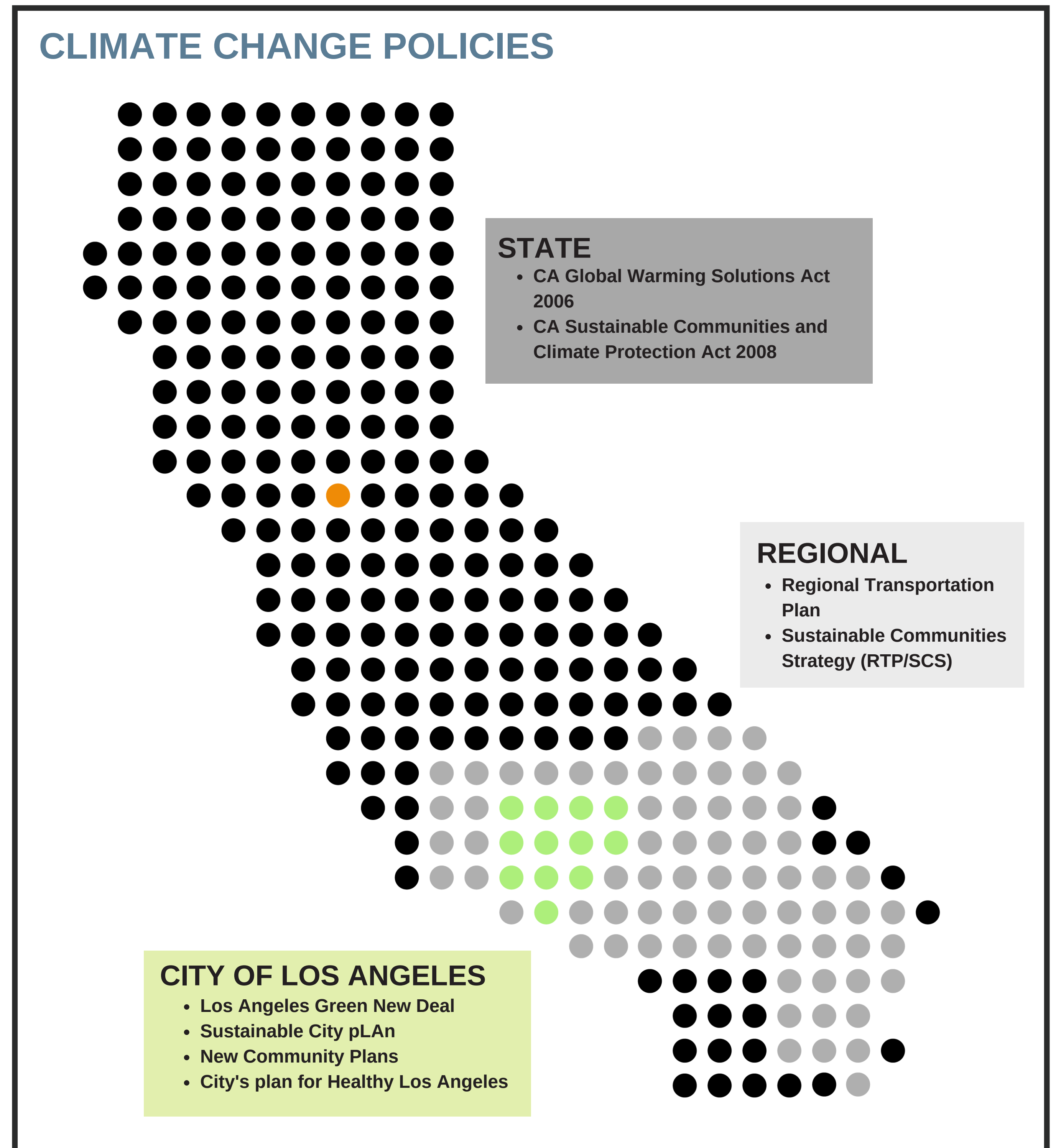
DESTRUCTIVE WILDFIRES

SEVERE DROUGHTS AND INCREASED DEVELOPMENT IN WILDLAND-URBAN INTERFACE AREAS HAVE LED TO MORE FREQUENT AND DESTRUCTIVE FIRES. W HIGH IN 2018 CAUSED 8 DEATHS AND TOPPED \$12 MILLION IN INSURANCE CLAIMS



SEA LEVEL RISE

BOTH LOW AND HIGH SEA LEVEL RISE SCENARIOS SUGGEST LARGE AREAS OF BEACHES IN THE LOS ANGELES REGION WILL DISAPPEAR AS SOON AS 2030



DTLA 2040 STRATEGIES TO FIGHT CLIMATE CHANGE

LAND USE STRATEGIES

ENCOURAGE EFFICIENT BUILDING TECHNIQUES AND SUSTAINABLE MATERIALS TO GUIDE LASTING DEVELOPMENT THAT MINIMIZE ADVERSE EFFECTS ON THE ENVIRONMENT

COMPACT AND POROUS CENTERS WITH INFILL DEVELOPMENT AND ADAPTIVE REUSE OF EXISTING AND HISTORIC STRUCTURES

ELIMINATE PARKING MINIMUMS DOWNTOWN TO ENCOURAGE NON-VEHICULAR TRAVEL, INCREASE AFFORDABILITY, AND IMPROVE DESIGN OUTCOMES

MOBILITY STRATEGIES

ESTABLISH A MODE SHARE GOAL OF 75% FOR TRANSIT, WALKING, AND BIKING FOR THE YEAR 2040 TO IMPROVE THE SUSTAINABILITY OF DOWNTOWN'S MOBILITY NETWORK AND INCREASE ACCESS FOR RESIDENTS, WORKERS, AND VISITORS

SUPPORT MAJOR REGIONAL RAIL INFRASTRUCTURE PROJECTS, SUCH AS LINK US AND CALIFORNIA HIGH SPEED RAIL THAT WILL IMPROVE CONNECTIVITY BETWEEN DOWNTOWN AND THE SURROUNDING REGION AND REDUCE TRAVEL TIMES

DENSE CENTERS OF EMPLOYMENT, HOUSING, AND ENTERTAINMENT USES WITH THE HIGHEST INTENSITY OF DEVELOPMENT, WELL-SERVED BY A CONVERGENCE OF MULTIPLE TRANSIT LINES

IMPLEMENT STRATEGIES TO REDUCE VEHICLE MILES TRAVELLED PER CAPITA

GREEN SPACE STRATEGIES

EMPHASIZE MULTIPLE-BENEFIT APPROACHES THAT SIMULTANEOUSLY INCORPORATE FLOOD STORAGE, WATER QUALITY TREATMENT, HABITAT IMPROVEMENT, AND INCREASING NATIVE VEGETATION BIODIVERSITY

CREATE A NETWORK OF PUBLIC AND PRIVATE GREEN INFRASTRUCTURE BY INCENTIVIZING THE USE OF TREES, ECO ROOFS, VERTICAL GARDENS, STORMWATER FACILITIES, AND LANDSCAPED AMENITY AREAS

IMPLEMENT STRATEGIES SUCH AS EXPANDING SHADE COVER AND MORE EFFICIENT WATER USE TO LESSEN THE URBAN HEAT ISLAND EFFECT AND INCREASE RELIANCE ON RENEWABLE ENERGY SOURCES

ENSURE THAT BOTH PRIVATE AND PUBLIC OPEN SPACES ARE DEVELOPED TO REDUCE POLLUTED RUNOFF, MAXIMIZE GROUNDWATER RECHARGE, AND REDUCE THE HEAT-ISLAND EFFECT