



# Breakout Session #1:

## Room 1 PMVDR

Emerging Vision Statement and Guiding Principles

Facilitator: Sienna Kuo | Notetaker: Jonathan Ayon

---

# Agenda

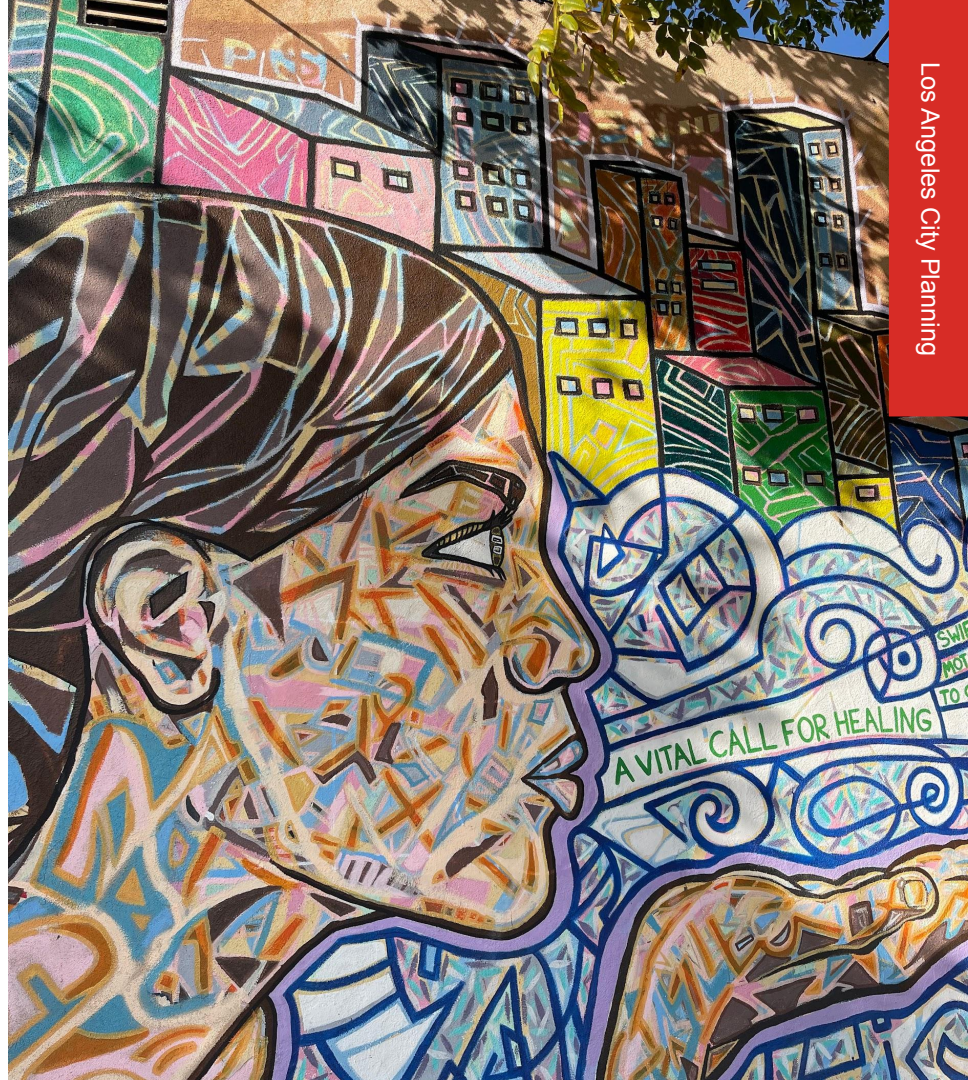
- Vision Statement
- Guiding Principles
- Report Back



---

# Report Back

- Select 1 member to report back
- Summarize highlights of what the small group discussed to the larger group



---

# Emerging Vision Statement

“The communities of **Palms-Mar Vista-Del Rey** share a history of community involvement and appreciation for the various cultural legacies that make up the City of Los Angeles. Its regional location, mix of land uses, and topography, create an advantage for connectivity to quality jobs, housing opportunities, access to coastal and ecological resources, and to an expanding regional transportation system. Building upon the City’s goals, the community envisions a health-focused, climate resilient and restorative community that will protect and enhance the quality of life for current and future residents and visitors by supporting equitable housing options that protect against displacement, eradicate homelessness, and greatly increases the availability of affordable housing. The community envisions a community that supports sustainable land use patterns by supporting green industries that reduce climate impacts, strengthens and protects connections to open space amenities such as the Pacific Ocean and the Ballona Creek, and creates and expands opportunities for a multimodal community with safe streets, reduced traffic, greater bike & pedestrian infrastructure, and a commitment to high quality public transit networks. The community envisions a healthy, equitable, accessible, and economically flourishing environment for current and future generations.”

---

## Emerging Vision Statement Feedback

**What do we like?**

---

**What can be added or removed?**

---

# Emerging Guiding Principles



## Housing

Increase housing opportunities at different affordability levels.



## Accommodating Growth

Accommodate growth in a strategic, inclusive, equitable, and sustainable manner.



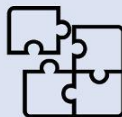
## Mobility

Promote a safe, effective, walkable, and multi-modal transportation network.



## Jobs & Employment

Support a thriving and inclusive economy.



## Design & Compatibility

Strengthen neighborhood character.



## Complete Neighborhoods

Encourage vibrant, healthy, complete neighborhoods.



## Industrial

Preserve industrial land and support reimaged 21st century industrial uses.



## Open Space

Expand access and connections to open space.



## Climate Change Resilience

Promote resource protection, resiliency planning and climate change adaptation.

---

# Emerging Guiding Principles

## *Housing: Increase housing opportunities at various affordability levels*

- Expand areas where housing is permitted.
- Increase housing options at all income levels, especially next to transit-rich areas and commercial corridors.
- Introduce a range of new housing opportunities in proximity to local services and top destinations within the community plan area.
- Incentivize the development of new affordable housing units.
- Address homelessness through long-term land use strategies.

---

***Housing:*** Increase housing opportunities at various affordability levels.

**What do we like?**

---

**What can be added?**

---



---

# Emerging Guiding Principles

## **Design & Compatibility:** *Strengthen Neighborhood Placemaking*

- Strengthen urban design and form to enhance the public realm and create a sense of place.
- Strengthen design standards to ensure compatibility of new infill development within existing residential neighborhoods.
- Activate commercial corridors with uses and design standards that will create lively places within the community
- Ensure new construction and rehab of existing buildings incorporate high quality architectural, landscape and environmental design.
- Establish development and design standards that ensure future development is compatible with existing neighborhoods
- Create buffers and smooth transitions between intense uses and sensitive uses, such as residential neighborhoods and ecological sensitive areas.

---

## **Design & Compatibility:** Strengthen Neighborhood Placemaking

**What do we like?**

---

**What can be added?**

---

---

# Emerging Guiding Principles

**Complete Neighborhoods:** *Encourage vibrant, healthy, complete neighborhoods.*

- Create complete and active neighborhoods through pedestrian-friendly design, a mix of uses in and around employment hubs, and encourage housing.
- Integrate neighborhood serving commercial uses within a ten or fifteen-minute walk of residential neighborhoods.
- Encourage public places for people to gather and interact.
- Promote neighborhoods with mixed-income housing, jobs, amenities, services and transit.
- Support convenient and accessible sources of healthy foods in all neighborhoods.
- Foster connections between and within neighborhoods.

---

**Complete Neighborhoods:** Encourage vibrant, healthy, complete neighborhoods.

**What do we like?**

---

**What can be added?**

---



# Breakout Session #1: Room 2 WPDR

Emerging Vision Statement and Guiding Principles

Facilitator: Ben Sullivan | Notetaker: Andy Pasillas

---

# Agenda

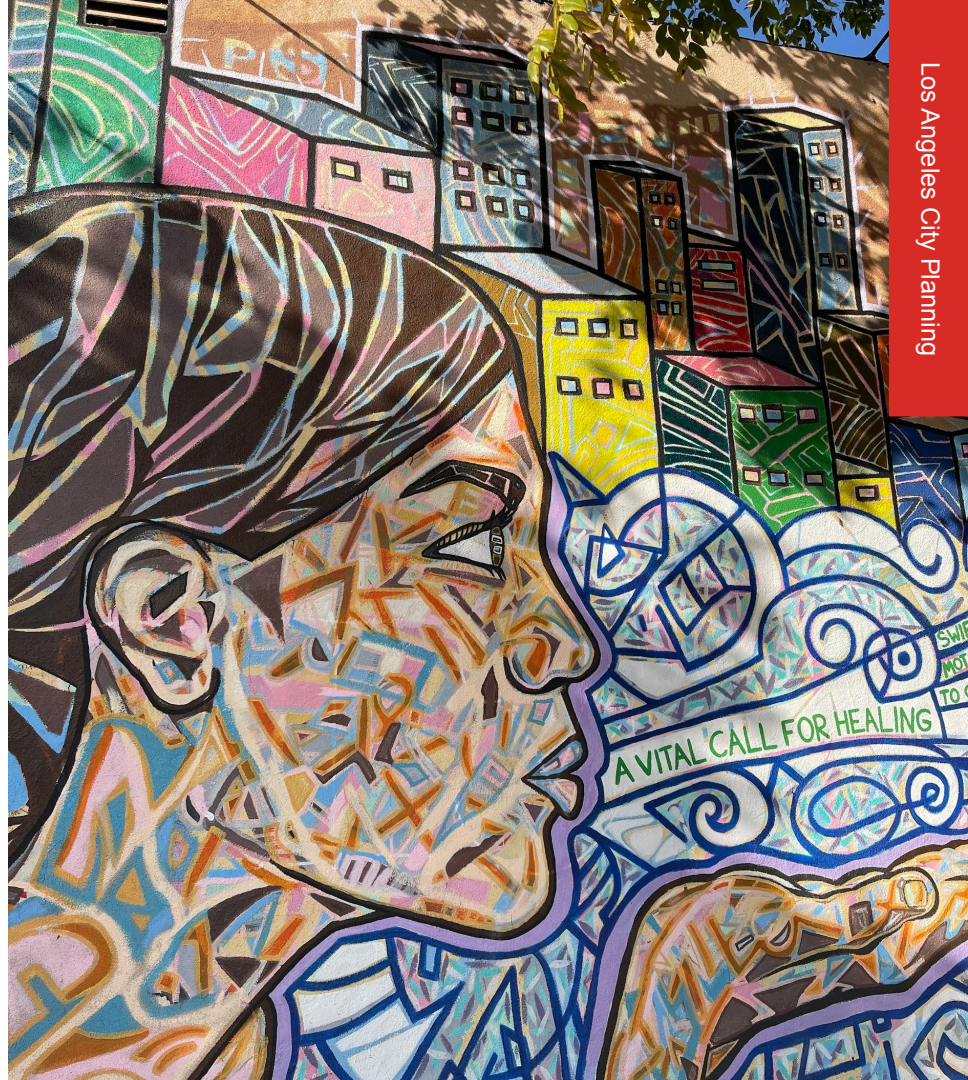
- Vision Statement
- Guiding Principles
- Report Back



---

# Report Back

- Select 1 member to report back
- Summarize highlights of what the small group discussed to the larger group



---

# Emerging Vision Statement

“The **Westchester - Playa Del Rey** community is rooted in the early history of the modern aerospace industry as well as the post WWII economic boom.

Today, beyond its proximity to LAX, the community is characterized by academic anchor institutions, major job centers, large industrial sites, growing transit access, and natural ecological resources such as the Ballona Wetlands, Coastal Bluffs, and beaches.

As we look to the future, the community envisions Westchester - Playa Del Rey as an economically thriving, socially equitable, and ecologically sustainable and resilient place for all those who may live, work, or play in the area.

The Westchester - Playa Del Rey Community Plan Update seeks to allow for a diverse mix of land uses, increase housing opportunities (especially affordable housing), encourage sustainable and resilient building design, ensure appropriate transitions between higher and lower scale buildings, and support robust multi-modal transportation access and greater pedestrian friendly design.”



---

## Emerging Vision Statement Feedback

**What do we like?**

---

**What can be added or removed?**

---

# Emerging Guiding Principles



## Housing

Increase housing opportunities at different affordability levels.



## Accommodating Growth

Accommodate growth in a strategic, inclusive, equitable, and sustainable manner.



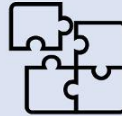
## Mobility

Promote a safe, effective, walkable, and multi-modal transportation network.



## Jobs & Employment

Support a thriving and inclusive economy.



## Design & Compatibility

Strengthen neighborhood character.



## Complete Neighborhoods

Encourage vibrant, healthy, complete neighborhoods.



## Industrial

Preserve industrial land and support reimagined 21st century industrial uses.



## Open Space

Expand access and connections to open space.



## Climate Change Resilience

Promote resource protection, resiliency planning and climate change adaptation.

---

# Emerging Guiding Principles

## *Housing: Increase housing opportunities at various affordability levels*

- Expand areas where housing is permitted.
- Increase housing options at all income levels, especially next to transit-rich areas and commercial corridors.
- Introduce a range of new housing opportunities in proximity to local services and top destinations within the community plan area.
- Incentivize the development of new affordable housing units.
- Address homelessness through long-term land use strategies.

---

***Housing:*** Increase housing opportunities at various affordability levels.

**What do we like?**

---

**What can be added?**

---

---

# Emerging Guiding Principles

## Design & Compatibility: *Strengthen Neighborhood Placemaking*

- Strengthen urban design and form to enhance the public realm and create a sense of place.
- Strengthen design standards to ensure compatibility of new infill development within existing residential neighborhoods.
- Activate commercial corridors with uses and design standards that will create lively places within the community
- Ensure new construction and rehab of existing buildings incorporate high quality architectural, landscape and environmental design.
- Establish development and design standards that ensure future development is compatible with existing neighborhoods
- Create buffers and smooth transitions between intense uses and sensitive uses, such as residential neighborhoods and ecological sensitive areas.

---

## **Design & Compatibility:** Strengthen Neighborhood Placemaking

**What do we like?**

---

**What can be added?**

---

---

# Emerging Guiding Principles

**Complete Neighborhoods:** *Encourage vibrant, healthy, complete neighborhoods.*

- Create complete and active neighborhoods through pedestrian-friendly design, a mix of uses in and around employment hubs, and encourage housing.
- Integrate neighborhood serving commercial uses within a ten or fifteen-minute walk of residential neighborhoods.
- Encourage public places for people to gather and interact.
- Promote neighborhoods with mixed-income housing, jobs, amenities, services and transit.
- Support convenient and accessible sources of healthy foods in all neighborhoods.
- Foster connections between and within neighborhoods.

---

**Complete Neighborhoods:** Encourage vibrant, healthy, complete neighborhoods.

**What do we like?**

---

**What can be added?**

---





# Breakout Session #1:

## Room 3 West LA

Emerging Vision Statement and Guiding Principles

Facilitator: Steve Garcia | Notetaker: Dominik Ortiz

---

# Agenda

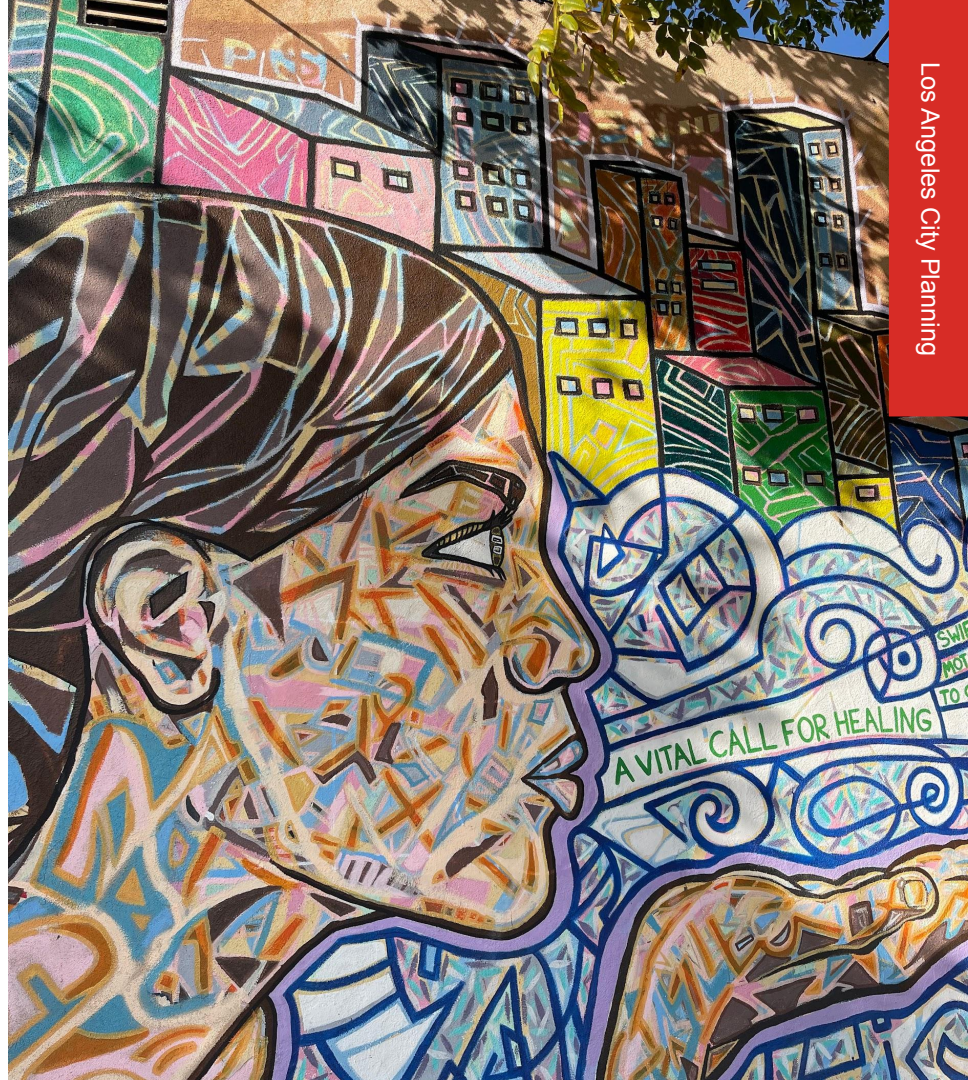
- Vision Statement
- Guiding Principles
- Report Back



---

# Report Back

- Select 1 member to report back
- Summarize highlights of what the small group discussed to the larger group



---

# Emerging Vision Statement

“**West Los Angeles** is a vibrant community of unique, diverse neighborhoods with thriving employment and cultural offerings. The Community Plan envisions creative opportunities for improved open space, increased walkability, contextual housing options, and historic and cultural preservation, and re-imagines industrial and mixed-use commercial areas to ensure housing equity and access to quality jobs. West Los Angeles is envisioned as a significant contributor to economic vitality, social equity, healthy mobility, and ecological sustainability and resiliency for current and future generations.”

---

## Emerging Vision Statement Feedback

**What do we like?**

---

**What can be added or removed?**

---

# Emerging Guiding Principles



## Housing

Increase housing opportunities at different affordability levels.



## Accommodating Growth

Accommodate growth in a strategic, inclusive, equitable, and sustainable manner.



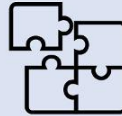
## Mobility

Promote a safe, effective, walkable, and multi-modal transportation network.



## Jobs & Employment

Support a thriving and inclusive economy.



## Design & Compatibility

Strengthen neighborhood character.



## Complete Neighborhoods

Encourage vibrant, healthy, complete neighborhoods.



## Industrial

Preserve industrial land and support reimaged 21st century industrial uses.



## Open Space

Expand access and connections to open space.



## Climate Change Resilience

Promote resource protection, resiliency planning and climate change adaptation.

---

# Emerging Guiding Principles

## *Housing: Increase housing opportunities at various affordability levels*

- Expand areas where housing is permitted.
- Increase housing options at all income levels, especially next to transit-rich areas and commercial corridors.
- Introduce a range of new housing opportunities in proximity to local services and top destinations within the community plan area.
- Incentivize the development of new affordable housing units.
- Address homelessness through long-term land use strategies.

---

***Housing:*** Increase housing opportunities at various affordability levels.

**What do we like?**

---

**What can be added?**

---



---

# Emerging Guiding Principles

## **Design & Compatibility:** *Strengthen Neighborhood Placemaking*

- Strengthen urban design and form to enhance the public realm and create a sense of place.
- Strengthen design standards to ensure compatibility of new infill development within existing residential neighborhoods.
- Activate commercial corridors with uses and design standards that will create lively places within the community
- Ensure new construction and rehab of existing buildings incorporate high quality architectural, landscape and environmental design.
- Establish development and design standards that ensure future development is compatible with existing neighborhoods
- Create buffers and smooth transitions between intense uses and sensitive uses, such as residential neighborhoods and ecological sensitive areas.

---

## **Design & Compatibility:** Strengthen Neighborhood Placemaking

**What do we like?**

---

**What can be added?**

---

---

# Emerging Guiding Principles

**Complete Neighborhoods:** *Encourage vibrant, healthy, complete neighborhoods.*

- Create complete and active neighborhoods through pedestrian-friendly design, a mix of uses in and around employment hubs, and encourage housing.
- Integrate neighborhood serving commercial uses within a ten or fifteen-minute walk of residential neighborhoods.
- Encourage public places for people to gather and interact.
- Promote neighborhoods with mixed-income housing, jobs, amenities, services and transit.
- Support convenient and accessible sources of healthy foods in all neighborhoods.
- Foster connections between and within neighborhoods.

---

**Complete Neighborhoods:** Encourage vibrant, healthy, complete neighborhoods.

**What do we like?**

---

**What can be added?**

---



# Breakout Session #1: Room 4 Venice

Emerging Vision Statement and Guiding Principles

Facilitator: Eva Chang-Person | Notetaker: Chris Piña

---

# Agenda

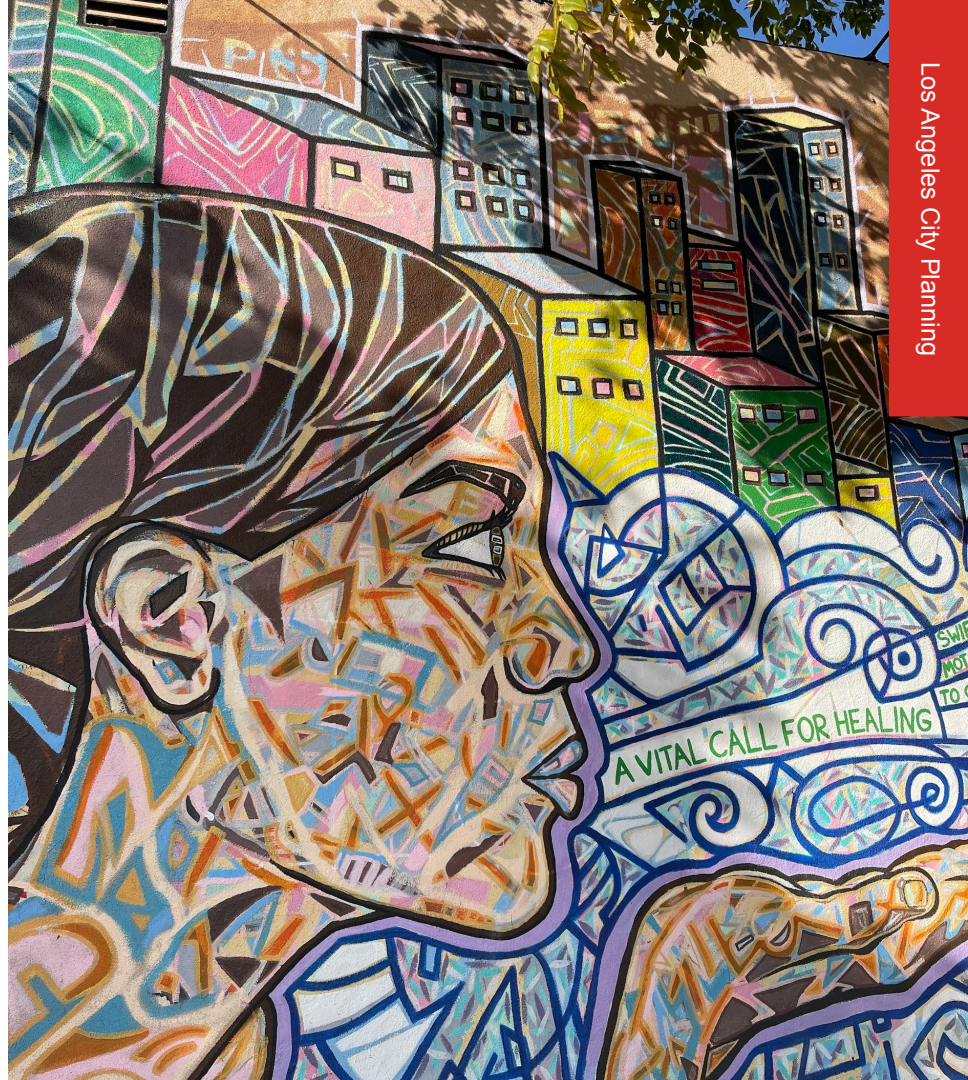
- Vision Statement
- Guiding Principles
- Report Back



---

# Report Back

- Select 1 member to report back
- Summarize highlights of what the small group discussed to the larger group



---

# Emerging Vision Statement

*“Venice represents a neighborhood defined by innovation and a rich multicultural history. Building upon its existing vibrant beach lifestyle and eclectic architecture, the plan is focused towards a more sustainable, equitable and inclusive coastal community. Recognized as a coastal asset, the plan fosters a vision that encourages residents and visitors to be responsible stewards of the Pacific Ocean, coastal and ecological resources, and shared open spaces and public realm to ensure that a healthy built environment is at the foundation for a more livable and resilient community for all.*

*The Venice community envisions playing a key role to advance equitable housing opportunities and social services by protecting against displacement, allowing for contextual infill in lower density neighborhoods and directing growth along mixed use corridors to support local neighborhood services and amenities.*

*The plan will play a key role in reducing climate impacts and create opportunities for a multi-modal community with safe streets, reduced traffic, greater bikeability & walkability, and a commitment to high quality public transit networks. Overall, the plan seeks to strengthen economic vitality for current and future generations to prosper.”*



---

## Emerging Vision Statement Feedback

**What do we like?**

---

**What can be added or removed?**

---

# Emerging Guiding Principles



## Housing

Increase housing opportunities at different affordability levels.



## Accommodating Growth

Accommodate growth in a strategic, inclusive, equitable, and sustainable manner.



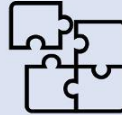
## Mobility

Promote a safe, effective, walkable, and multi-modal transportation network.



## Jobs & Employment

Support a thriving and inclusive economy.



## Design & Compatibility

Strengthen neighborhood character.



## Complete Neighborhoods

Encourage vibrant, healthy, complete neighborhoods.



## Industrial

Preserve industrial land and support reimagined 21st century industrial uses.



## Open Space

Expand access and connections to open space.



## Climate Change Resilience

Promote resource protection, resiliency planning and climate change adaptation.

---

# Emerging Guiding Principles

## *Housing: Increase housing opportunities at various affordability levels*

- Expand areas where housing is permitted.
- Increase housing options at all income levels, especially next to transit-rich areas and commercial corridors.
- Introduce a range of new housing opportunities in proximity to local services and top destinations within the community plan area.
- Incentivize the development of new affordable housing units.
- Address homelessness through long-term land use strategies.

---

***Housing:*** Increase housing opportunities at various affordability levels.

**What do we like?**

---

**What can be added?**

---

---

# Emerging Guiding Principles

## Design & Compatibility: *Strengthen Neighborhood Placemaking*

- Strengthen urban design and form to enhance the public realm and create a sense of place.
- Strengthen design standards to ensure compatibility of new infill development within existing residential neighborhoods.
- Activate commercial corridors with uses and design standards that will create lively places within the community
- Ensure new construction and rehab of existing buildings incorporate high quality architectural, landscape and environmental design.
- Establish development and design standards that ensure future development is compatible with existing neighborhoods
- Create buffers and smooth transitions between intense uses and sensitive uses, such as residential neighborhoods and ecological sensitive areas.

---

## **Design & Compatibility:** Strengthen Neighborhood Placemaking

**What do we like?**

---

**What can be added?**

---

---

# Emerging Guiding Principles

**Complete Neighborhoods:** *Encourage vibrant, healthy, complete neighborhoods.*

- Create complete and active neighborhoods through pedestrian-friendly design, a mix of uses in and around employment hubs, and encourage housing.
- Integrate neighborhood serving commercial uses within a ten or fifteen-minute walk of residential neighborhoods.
- Encourage public places for people to gather and interact.
- Promote neighborhoods with mixed-income housing, jobs, amenities, services and transit.
- Support convenient and accessible sources of healthy foods in all neighborhoods.
- Foster connections between and within neighborhoods.

---

**Complete Neighborhoods:** Encourage vibrant, healthy, complete neighborhoods.

**What do we like?**

---

**What can be added?**

---





# Breakout Session #1:

## *Room 5 Regional*

### Emerging Vision Statement and Guiding Principles

Facilitator: Julia Heidelbergman | Notetaker: Alice Okumura

---

# Agenda

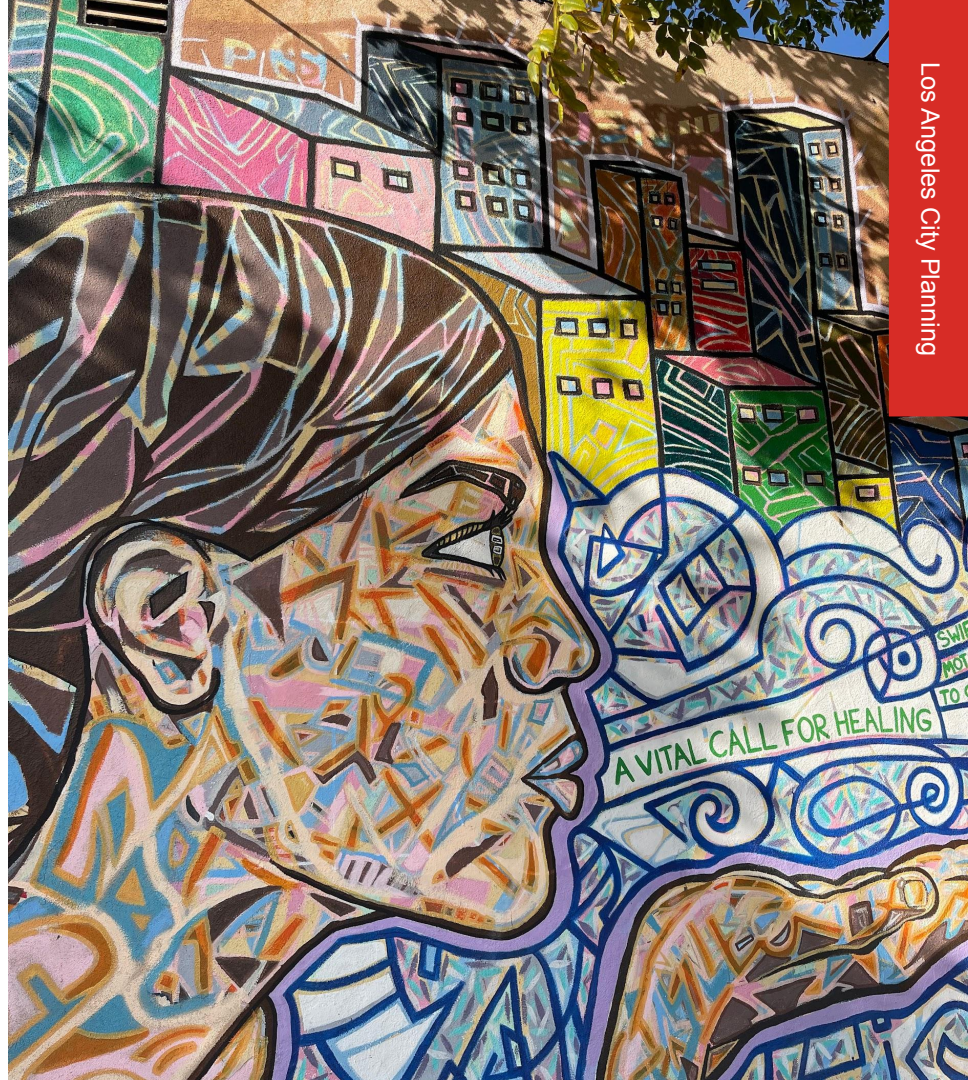
- Vision Statement
- Guiding Principles
- Report Back



---

# Report Back

- Select 1 member to report back
- Summarize highlights of what the small group discussed to the larger group



---

# Emerging Vision Statement

“The **Westchester - Playa Del Rey** community is rooted in the early history of the modern aerospace industry as well as the post WWII economic boom.

Today, beyond its proximity to LAX, the community is characterized by academic anchor institutions, major job centers, large industrial sites, growing transit access, and natural ecological resources such as the Ballona Wetlands, Coastal Bluffs, and beaches.

As we look to the future, the community envisions Westchester - Playa Del Rey as an economically thriving, socially equitable, and ecologically sustainable and resilient place for all those who may live, work, or play in the area.

The Westchester - Playa Del Rey Community Plan Update seeks to allow for a diverse mix of land uses, increase housing opportunities (especially affordable housing), encourage sustainable and resilient building design, ensure appropriate transitions between higher and lower scale buildings, and support robust multi-modal transportation access and greater pedestrian friendly design.”

---

## Emerging Vision Statement Feedback

**What do we like?**

---

**What can be added or removed?**

---

---

# Emerging Vision Statement

“**Venice** represents a neighborhood defined by innovation and a rich multicultural history. Building upon its existing vibrant beach lifestyle and eclectic architecture, the plan is focused towards a more sustainable, equitable and inclusive coastal community. Recognized as a coastal asset, the plan fosters a vision that encourages residents and visitors to be responsible stewards of the Pacific Ocean, coastal and ecological resources, and shared open spaces and public realm to ensure that a healthy built environment is at the foundation for a more livable and resilient community for all. The Venice community envisions playing a key role to advance equitable housing opportunities and social services by protecting against displacement, allowing for contextual infill in lower density neighborhoods and directing growth along mixed use corridors to support local neighborhood services and amenities. The plan will play a key role in reducing climate impacts and create opportunities for a multi-modal community with safe streets, reduced traffic, greater bikeability & walkability, and a commitment to high quality public transit networks. Overall, the plan seeks to strengthen economic vitality for current and future generations to prosper.”

---

## Emerging Vision Statement Feedback

**What do we like?**

---

**What can be added or removed?**

---

---

# Emerging Vision Statement

“The communities of **Palms-Mar Vista-Del Rey** share a history of community involvement and appreciation for the various cultural legacies that make up the City of Los Angeles. Its regional location, mix of land uses, and topography, create an advantage for connectivity to quality jobs, housing opportunities, access to coastal and ecological resources, and to existing and expanding Metro systems. Building upon the City’s goals, the community envisions a health-focused, climate resilient and restorative community that will protect and enhance the quality of life for current and future community residents and visitors by supporting equitable housing options that protect against displacement, eradicates homelessness, and greatly increases the availability of affordable housing. The community envisions a community that supports sustainable land use patterns by supporting green industries that reduce climate impacts, strengthens and protects connections to open space amenities such as the Pacific Ocean and the Ballona Creek, and creates and expands opportunities for a multi-modal community with safe streets, reduced traffic, greater bikeability & walkability, and a commitment to high quality public transit networks. The community envisions a healthy, equitable, accessible, and economically flourishing environment for current and future generations to prosper.”



---

## Emerging Vision Statement Feedback

**What do we like?**

---

**What can be added or removed?**

---

---

# Emerging Vision Statement

“**West Los Angeles** is a vibrant community of unique, diverse neighborhoods with thriving employment and cultural offerings. The Community Plan envisions creative opportunities for improved open space, increased walkability, contextual housing options, and historic and cultural preservation, and re-imagines industrial and mixed-use commercial areas to ensure housing equity and access to quality jobs. West Los Angeles is envisioned as a significant contributor to economic vitality, social equity, healthy mobility, and ecological sustainability and resiliency for current and future generations.”

---

## Emerging Vision Statement Feedback

**What do we like?**

---

**What can be added or removed?**

---

# Emerging Guiding Principles



## Housing

Increase housing opportunities at different affordability levels.



## Accommodating Growth

Accommodate growth in a strategic, inclusive, equitable, and sustainable manner.



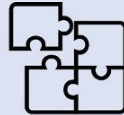
## Mobility

Promote a safe, effective, walkable, and multi-modal transportation network.



## Jobs & Employment

Support a thriving and inclusive economy.



## Design & Compatibility

Strengthen neighborhood character.



## Complete Neighborhoods

Encourage vibrant, healthy, complete neighborhoods.



## Industrial

Preserve industrial land and support reimaged 21st century industrial uses.



## Open Space

Expand access and connections to open space.



## Climate Change Resilience

Promote resource protection, resiliency planning and climate change adaptation.

---

## ***Emerging Guiding Principles***

**What do we like?**

---

**What can be added?**

---

---

# Emerging Guiding Principles

## *Housing: Increase housing opportunities at various affordability levels*

- Expand areas where housing is permitted.
- Increase housing options at all income levels, especially next to transit-rich areas and commercial corridors.
- Introduce a range of new housing opportunities in proximity to local services and top destinations within the community plan area.
- Incentivize the development of new affordable housing units.
- Address homelessness through long-term land use strategies.

---

***Housing:*** Increase housing opportunities at various affordability levels.

**What do we like?**

---

**What can be added?**

---

---

# Emerging Guiding Principles

## Design & Compatibility: *Strengthen Neighborhood Placemaking*

- Strengthen urban design and form to enhance the public realm and create a sense of place.
- Strengthen design standards to ensure compatibility of new infill development within existing residential neighborhoods.
- Activate commercial corridors with uses and design standards that will create lively places within the community
- Ensure new construction and rehab of existing buildings incorporate high quality architectural, landscape and environmental design.
- Establish development and design standards that ensure future development is compatible with existing neighborhoods
- Create buffers and smooth transitions between intense uses and sensitive uses, such as residential neighborhoods and ecological sensitive areas.



---

## **Design & Compatibility:** Strengthen Neighborhood Placemaking

**What do we like?**

---

**What can be added?**

---

---

# Emerging Guiding Principles

**Complete Neighborhoods:** *Encourage vibrant, healthy, complete neighborhoods.*

- Create complete and active neighborhoods through pedestrian-friendly design, a mix of uses in and around employment hubs, and encourage housing.
- Integrate neighborhood serving commercial uses within a ten or fifteen-minute walk of residential neighborhoods.
- Encourage public places for people to gather and interact.
- Promote neighborhoods with mixed-income housing, jobs, amenities, services and transit.
- Support convenient and accessible sources of healthy foods in all neighborhoods.
- Foster connections between and within neighborhoods.

---

**Complete Neighborhoods:** Encourage vibrant, healthy, complete neighborhoods.

**What do we like?**

---

**What can be added?**

---