

**Sunshine Canyon Landfill
Independent Monitor
Quarterly Site Monitoring Status Report
December 1, 2011 – March 31, 2012**

Prepared For:

City of Los Angeles Department of City Planning

And

County of Los Angeles Department of Regional Planning



Prepared By:



UltraSystems
environmental • management • planning

16431 Scientific Way
Irvine, California 92618
(949) 788-4900

www.ultrasystems.com

June 11, 2012

Contents

Quarterly Status Report	1
Definition of Terms	2
Site Visits During this Quarter	2
Status Summary	2
Non-Compliance.....	2
Further Review Needed.....	3
Summary of Requested Documents	14
Conclusions	15

Sunshine Canyon Landfill Mitigation Monitoring – 2012 First Quarter Summary/ City
(see Excel Spreadsheets)

Sunshine Canyon Landfill Mitigation Monitoring – 2012 First Quarter Summary/ County
(see Excel Spreadsheets)

Appendices

Appendix 1 – Relevant Site Photos

Appendix 2 – Site Visit Attendees by Date of Site Visit

Reference Documents

Sunshine Canyon Landfill Independent Monitor Monthly Site Monitoring Status Report

December 1, 2011 – January 31, 2012

Sunshine Canyon Landfill Independent Monitor Monthly Site Monitoring Status Report

February 1, 2012 – February 29, 2012

Sunshine Canyon Landfill Independent Monitor Monthly Site Monitoring Status Report

March 1, 2012 – March 31, 2012

Quarterly Status Report

The Quarterly Status Report is a compilation of the period's prior three monthly Site Monitoring Reports. After each site visit, the UltraSystems monitors who went to the Sunshine Canyon Landfill site each wrote a Mitigation Monitoring Site Report, updated the Mitigation Monitoring Summary Excel Tables for the City and County of Los Angeles noting any mitigation measures and/or conditions that need further review, and documented these areas in an appendix for that site visit date. Any issues that required immediate attention were reported to the appropriate staff at the City of Los Angeles Planning Department, the County of Los Angeles Department of Regional Planning, the County of Los Angeles Department of Public Works and the Sunshine Canyon Lead Enforcement Agency (SCL-LEA).

The Sunshine Canyon Landfill City and County Summary Tables record each site visit and frequency of monitoring, by date. When a mitigation measure and/or condition is monitored, a check mark is made under the date that it was monitored, and the status of meeting the mitigation measures and/or conditions' requirements observed during monitoring is recorded. Tasks with a yearly or non-ongoing monitoring frequency are denoted by a forward slash (/) in subsequent date columns. In the status column, the letter "C" is put next to the task if it is Compliant; the letters "NC" are noted if the task status is Non-Compliant; and the letters "FRN" are used if Further Review is Needed for meeting the requirements of the mitigation measures and/or conditions.

Under the Further Review Needed-Comment column, observed conditions are recorded and recommendations in meeting the requirements of the mitigation measures are stated as appropriate. When the mitigation measures and/or conditions that were previously noted as "FRN" are fully compliant, an "R" is placed in the Resolved column and a "C" replaces the "FRN" in the status column. Also noted in the FRN-Comment column are those action items that would improve monitoring efficiency by having reports and documents readily available.

This Quarterly Report provides the City of Los Angeles Department of Planning and the County of Los Angeles Department of Regional Planning with a concise status of the Mitigation Measure Monitoring for the period of December 2, 2011 to March 29, 2012. It includes:

1. The latest Mitigation Monitoring Summary Excel Tables (March monthly tables.) These tables record the areas of monitoring completed and the status summary of monitoring for these areas for the entire quarter;
2. A Status Summary of Non-Compliant, Further Review Needed and Compliant with the requirements of the mitigation measures and/or conditions;
3. Relevant Site Photos showing site conditions; and
4. Monthly Reports as reference documents.

Definition of Terms

Compliant is defined as complying with the City and County Mitigation Measures and Conditions of Approval.

Non-compliant is defined as not complying with the City and County Mitigation Measures and Conditions of Approval.

Further Review Needed is defined as implementing plans (agency-approved, if required) to fully comply with a Mitigation Measure or Condition of Approval. Some plans, especially vegetation, require an extended time frame, and immediate compliance is not possible.

Further Review Needed-Comments is defined as comments documenting site conditions observed during monitoring visits that are not fully compliant but action is being taken in order to obtain full compliance with mitigation measures and/or conditions. Recommendations from the monitor and status from Republic may also be given.

Resolved is defined as action taken or activities completed to fully comply with mitigation measures and/or conditions.

Site Visits During this Quarter

UltraSystems conducted eight site monitoring visits during this quarterly reporting period. They were multiple-discipline monitoring, and they were conducted on December 5, 2011; December 21, 2011; January 19, 2012; February 8, 2012; February 15, 2012; February 29, 2012; March 14, 2012; and March 29, 2012. Appendix 2 provides the names of the attendees for each site visit.

Status Summary

This section summarizes the conditions of approval and mitigation measures that were monitored during the quarterly reporting period and their respective statuses. For a more detailed site record, including more complete photos, refer to individual monthly reports which are attached as reference documents.

Non-Compliant

There were no areas noted during this period that were non-compliant with Conditions of Approval or Mitigation Measures.

Further Review Needed

The following mitigation measures and/or conditions were found not to be fully compliant, but were being worked on in order to obtain full compliance. This section summarizes the progress being made toward being fully compliant.

Q-C.3.g (City)

Paved Access Roads

All access roads to permanent facilities, excepting those used infrequently, shall be paved.

Air Quality 6.03 (County)

Access roadways will be paved up to the active fill area to minimize fugitive dust emissions. Main access roads will be paved, and paved roadways will extend up Sunshine Canyon to new active fill areas as development of the landfill progresses. The access haul roads extended to new fill areas shall be surfaced with recycled asphalt, aggregate materials, or soil stabilization products to minimize the length of untreated dirt. Paved roads will be cleaned on a regular basis.

Current Status/Comments - In early January of 2011, an ancient landslide was activated during excavation in an area for future cell CC-2. As a result of the landslide, existing paved access roads to permanent facilities were impacted. Temporary unpaved roads were used to access these facilities until February 10, 2012, when there was earth movement, which was started during another cell development in a different area. The use of the realigned road was stopped until remediation of the earth movement was performed. After remediation, the realignment of new access roads was started again. The new access roads are anticipated to be completed and paved by mid-May 2012 (Photo 21).

Q-C.10.d.(1) (City)

The applicant/operator shall either purchase or investigate the purchase of non-diesel, alternative fuel vehicles and equipment, as follows:

- 1) Upon commencement of operation of the landfill, all light-duty vehicles operated at the site shall be alternative fuel vehicles.*

Alternative Fuel Vehicles - 77.A (County)

A. Upon the Effective Date, all light-duty vehicles operating at the Facility shall be alternative fuel vehicles, to the extent deemed technologically and economically feasible by the TAC;

Current Status/Comments - This Q condition was verified on December 5, 2011 to be compliant.

Q-C.10.d.(2) (City)

- 2) Within the first year of operation, ten alternative fuel refuse collection trucks or transfer trucks shall be purchased by the applicant/operator and put into operation at the landfill.*

Alternative Fuel Vehicles - 77.B-H. (County)

B. Within the first year after the Effective Date, the Permittee shall purchase, and put into operation, 10 alternative fuel Refuse collection trucks or transfer trucks at the Facility, to the extent deemed technologically and economically feasible by the TAC;

C. Within the first year after the Effective Date, the Permittee shall prepare and submit an alternative fuel vehicle report to the TAC for review and approval. The report shall contain information on available alternative fuel technologies and their economic feasibility, as well as other information deemed necessary by the TAC to determine the feasible use of alternative fuels at the Facility;

D. Within the first year after the Effective Date, the Permittee shall design and implement at least one heavy-duty, alternative fuel off-road equipment pilot program, to the extent deemed technologically and economically feasible by the TAC;

E. Within three years after the TAC determines that non-diesel, alternative fuel vehicles are technologically and economically feasible:

1. The Permittee shall require all transfer trucks entering the Facility to be non-diesel alternative fuel vehicles; and

2. All transfer trucks and collection trucks owned or leased by the Permittee and used at the Facility shall be non-diesel alternative fuel vehicles;

F. Within six years after the TAC determines the appropriate technological and economic feasibility, 75 percent of all of truck trips entering the Landfill, with a Solid Waste capacity of at least nine tons, shall be made by non-diesel alternative fuel vehicles;

G. With the assistance of the SCAQMD and the DPH-LEA, the Permittee shall use its best efforts to participate in a clean fuel demonstration program with one or more types of off-road heavy-duty equipment; and

H. As part of its annual report to the TAC required by the IMP, the Permittee shall submit an ongoing evaluation of its compliance with each component of this Condition No. 77. The Permittee may appeal the requirements of this Condition No. 77 to the Director of the Department in accordance with the procedure described in Condition No. 11 for the appeal of a notice of Violation, but only on the bases of whether a particular alternative fuel is technologically or economically feasible.

Current Status/Comments - A status update was recommended in the FRN-Comment column by the project manager as a result of the December 5, 2011 site visit. As of the February 29, 2012 and March 29, 2012 site monitoring, it was noted that a status report was not available.

T-4 (City)

Prepare a plot plan ["fire plan"] to the satisfaction of the Fire Depart.

a. immediate access fire plan [now]

b. plot plan for the future facilities will be submitted when these are implemented

Current Status/Comments - During the December 5, 2011 monitoring visit, it was noted by the project manager that an updated fire plan (including a hydrant plan) was being developed by Republic and that it was going to be submitted to the City and County. During the March 29, 2012 site visit, UltraSystems

was informed that the fire plan had been completed and was going to be provided to the Los Angeles Fire Department and City and County Planning Departments.

M-4.9.3 (109) (City)

Visual 10.11 (County)

On a once a week basis, or as needed, the landfill operator shall mobilize cleanup crews to provide litter pickup services within the O'Melveny Park area, along Balboa Boulevard and San Fernando Road, and in other residential areas located in proximity to the landfill, that may be affected by offsite litter migration. On a daily basis, the clean-up crews shall inspect the surrounding area to assess if more frequent cleanups are required. Fences outside of the landfill perimeter may be visible to the surrounding community.

Current Status/Comments - The areas within the City of Los Angeles' jurisdiction have been surveyed and litter has been removed by Republic personnel. No litter was observed by the project manager during monitoring visits in the city areas that are required to be surveyed by Republic.

Litter was observed by the project manager in the area adjacent to the roadway from the San Fernando Road and Sierra Highway intersection to the SR 14 overpass within County jurisdiction.

M-4.9.3 (110) (City)

Visual 10.11 (County)

Landfill employees shall watch for any illegal dumping activities on or around the project site. The landfill litter control crew shall provide cleanup service for areas within one mile of the project site. The phone number where this service will be requested will be provided in the quarterly newsletter and on the web site.

Current Status/Comments - The areas within the City of Los Angeles' jurisdiction have been surveyed by Republic personnel for illegal dumping. No illegal dumping was observed by the project manager during monitoring visits in the city areas that are required to be surveyed by Republic.

Illegal dumping was observed by the project manager at the railroad underpass on Sierra Highway, near San Fernando Road and on Sierra Highway in the County jurisdiction.

M-4.1.1(5) (City)

All grading activities shall be in compliance with specific requirements provided in a comprehensive geotechnical report prepared specifically for the proposed project, including provisions for excavation approved by the Department of Building and Safety, City Engineer, City LEA and other Responsible Agencies.

Geology – 1.07 (County)

All grading activities shall be in compliance with specific requirements provided in a comprehensive geotechnical report prepared specifically for the proposed Project, including provisions for excavation approved by the County Department of Public Works, the County Local Enforcement Agency (LEA) and other Responsible Agencies.

Current Status/Comments - On the December 5, 2011 site visit report it was noted by the civil/geotechnical engineer that the comprehensive geotechnical report referred to in the Condition should be made available on-site for agency and monitor review.

M-4.1.2(8) (City)

When excavating for the landfill operation, if a landslide is encountered, all material constituting that landslide shall be removed. Excess landslide material not used immediately for cover material shall be stockpiled onsite for future use. If necessary, the landslide area shall be excavated a portion at a time to avoid opening large sections of potentially unstable material. A buffer area shall be maintained between the active landfill cells receiving waste and areas under excavation to remove overburden soils, landslide debris, and weathered bedrock. A qualified geologist shall delineate the limits of the landslide during excavation. Landslide removal shall not commence when the ground is saturated, unless removed under the direction and specifications of a certified engineering geologist.

Geology – 1.05 (County)

During excavation, any unsuitable material encountered below the base grade for the landfill, including alluvium, organic material, and landslide debris, shall be removed. Engineered compacted fill shall be placed in those areas to restore the base grade for liner system construction. Excess material not used immediately for cover material shall be stockpiled on-site for future use. The unsuitable material shall be excavated, a portion at a time, as the working area of the landfill progresses to avoid opening large sections of potentially unstable material. A buffer area (i.e. 50 -100 horizontal feet or as deemed appropriate to maintain safe working conditions) shall be used between the active cells receiving waste and areas under excavation. In accordance with CCR Title 14, a certified engineering geologist shall delineate the limits of the unsuitable material and associated "backcuts" to facilitate removals during excavation. Removal shall not occur during the rainy season (October 1 - April 30) or when the ground is saturated, unless performed under the direction and specifications of a certified engineering geologist.

Geology – 1.06 (County)

All grading activities shall be performed in accordance with applicable provisions of the County Code and with the rules and regulations as established by the County Department of Public Works. All grading within the landfill footprint that could impact off-site property, including but not limited to grading in connection with cell development, stockpiling, or excavation for borrow and cover materials.

Current Status/Comments –

In early January of 2011 a landslide occurred. Removal of the landslide material at the location of the old Leachate Collection and Treatment Facility (LCTF) was ongoing during the site monitoring visit on November 14, 2011. At a meeting held during that visit, it was stated by Republic's geotechnical engineering consultant that an engineering geologist was monitoring the removal and cleanup of landslide material. Reports from Republic's geologists verifying that all unsuitable/ landslide material has been removed should be available for agency and monitor review.

M-4.1.4(10) (City)

The landfill facility shall be designed and constructed to meet CCR, Title 14, Division 7, Chapter 3, Article 7.8 1777 (final Site Face) and CCR, Title 23, Division 3, Chapter 15, Article 4, 2547 (Seismic Design) requirements "to withstand the maximum probable earthquake without damage to the foundations or to the structures which control leachate, surface drainage, erosion, or gas."

Current Status/Comments - During the November 21, 2011 site monitoring visit it was noted by the civil/ geotechnical engineer that the new Leachate Control Treatment Facility (LCTF) near the main entrance of the landfill (at San Fernando Road) included three large polyethylene tanks and a series of smaller tanks. One of the three tanks was not anchored correctly. This tank was noted to be properly anchored on December 5, 2011. On January 19, 2012, it was noted that one of the tanks in the LCTF had the iron angle support improperly placed and that the guy cable was loose and should be tightened (Photo 10). On February 8, 2012 it was noted that this installation problem was corrected.

M-4.1.4(11) (City)

(Partial) Final designs for major engineering structures shall be based on the results of the detailed stability analyses of potential seismic events.

Current Status/Comments - On December 5, 2011 and January 19, 2012 it was noted by the civil/ geotechnical engineer that the design report for the LCTF, which is a major engineered structure, was not available for review by the agency and the monitor. This condition was noted as FRN on December 5, 2011 and January 19, 2012 because of the lack of reports being available for review.

M-4.1.5(12) (City)

Geologic Hazards - Liquefaction

Alluvium in the canyon bottoms beneath the footprint of the waste containment system and beneath ancillary structures shall be excavated and, if necessary, replaced with compacted structural fill during construction. A qualified geologist shall be onsite during construction activities to observe removal and replacement of alluvium and verify that all alluvium within the landfill footprint has been removed prior to placement of any compacted fill or construction of any containment system elements.

Geology – 1.07 (County)

All grading activities shall be in compliance with specific requirements provided in a comprehensive geotechnical report prepared specifically for the proposed Project, including provisions for excavation approved by the County Department of Public Works, the County Local Enforcement Agency (LEA) and other Responsible Agencies.

Current Status/Comments - On the December 5, 2011 site visit report it was noted by the civil/geotechnical engineer that the comprehensive geotechnical report referred to in the Condition should be made available on-site for agency and monitor review.

M-4.1.5(13) (City)

The landfill facility shall be designed and constructed in accordance with RCRA, Subtitle D, 40 CFR, Part 258, Subpart B, § 258.14 (Unstable Areas) so that there would be no liquefaction related impacts.

Current Status/Comments - On December 5, 2011, January 19, 2012 and February 8, 2012 it was noted by the civil/geotechnical engineer that Republic's geologist's reports were not made available for agency and monitor review to verify that all potentially liquefiable material has been removed. A report from the geotechnical engineer assessing risk should be made available. This condition was noted as FRN on December 5, 2011 and January 19, 2012 and February 8, 2012 because of the lack of reports being available for review.

M-4.3.1(40) (City)

In order to monitor the effectiveness of those measures designed to prevent pollution from entering the offsite stormwater system, the project proponent shall be required to apply for coverage under the SWRCB's General Construction Activities Stormwater Permit Programs.

Current Status/Comments - On March 14, 2012 it was noted by the hydrologist/engineer that at the new access road construction near the entrance, slopes were only being dozer-compacted and that the area to the north was vulnerable to erosion and creation of sediment (Photo 11). During a storm, turbid water would discharge through the CMP. It was noted by the hydrologist/engineer that the area needed to be stabilized during the construction period.

M-4.3.1(43) (City)

Sediment shall be cleaned out of the sedimentation basins after every significant storm.

Surface Water 2.15 (County)

Surface Water Preventive Maintenance Program

A preventive maintenance program will be implemented by the permittee, including inspection of facility equipment, systems, and stormwater management devices to detect conditions that may cause breakdowns or failures resulting in discharge of materials into stormwater. This program applies to the onsite drainage ditches, rip-rap, berms and dikes, dust control, silt fences, diversion grading, and pavement surfaces. Each system and piece of equipment will be inspected monthly.

Procedures for inspection would vary based on the piece of equipment or system. However, the major elements of the inspection program will include checking for cracks or structural failures, inspecting parts or pieces of equipment nonfunctioning, checking for the degradation or deterioration of operating units, and investigating the need for cleaning or emptying units.

Current Status/Comments - On December 5, 2011 it was noted by the hydrologist/ engineer, the civil/ geotechnical engineer, and the project manager that Basin A contained very little sediment. Basin B and the terminal basin contained a substantial amount of sediment. There was no significant change in the sediment content of Basin B and the terminal basin on December 21, 2011, January 19, February 8, March 14 and March 29, 2012. The drainage ports in the vertical riser/ outlet in Basin B may not be low enough, and these ports do not allow for full water drainage. There was standing water noted on all monitoring dates. There is some sediment accumulation around the discharge ports. The terminal basin had six feet or more of soft sediment, which was preventing complete drainage of the water because it cannot access the outlet towers.

The Basin A geofabric-wrapped internal, rectangular concrete wall was moved, thereby allowing full drainage. Basin A had the least amount of sediment. (Photos 11, 12, 13, 14, 15, 16, 17 and 18.) It is understood that cleanup is complicated by the soft and wet nature of the sediment. Republic has indicated it is committed to cleaning up Basin B and the terminal basin as conditions permit. The oversight of the clean out of sediment and debris is done by the LEA, and removal will be accomplished when conditions allow.

On January 19, 2012 it was observed by the civil/ geotechnical engineer and the project manager that the terminal basin has a portion of the perimeter concrete walkway uplifted and broken (Photos 19 and 20). It is recommended that the reason for this uplifting should be investigated and the results of the investigation should be provided to the City and County planning departments. The broken section should also be repaired.

M-4.3.1(45) (City)

An erosion control plan would be implemented by the project proponent to prevent stormwater pollution from construction activity. Construction materials, equipment and vehicles would be stored or parked in areas protected from stormwater runoff. Construction material loading and unloading would be in

designated areas to minimize any washout due to stormwater runoff. Pre-construction controls would be implemented to include the use of a sandbagging system, including sandbag check dams and sandbag desilting basins, which would be used to limit runoff velocities and minimize sediment in stormwater runoff.

Current Status/Comments - On the December 5, 2011 site visit, it was recommended by the hydrologist/ engineer that the erosion prevention plan, which should be a living document to keep up with construction, be available for review on site. As of March 29, 2012 this still has not yet been made available for agency and monitor review. On the March 14, 2012 site monitoring visit, it was noted that at the new access road construction near the entrance, slopes are only being dozer-compacted. The area to the north is vulnerable to erosion and sedimentation. Water discharge and sediment during a storm is possible with the exposed slopes. It was pointed out by the hydrologist/ engineer that the area needed to be stabilized during the construction period.

M-4.2.11(23) (City)

(Summarized) Revegetation of slopes and interim cover areas to control erosion.

Current Status/Comments - On the December 5, 2011 monitoring site visit it was noted by the biologist that 85 acres had been hydroseeded. That amounted to most of the landfill slopes. On December 21, 2011 growth and vegetative cover was minimal. On the January 19, 2012 site visit it was noted by the project manager that the vegetative cover remained minimal. It is recommended that Republic have their biological consultant evaluate the growth and provide analysis and recommendations in order to improve the vegetative cover. On the February 29, 2012 site visit it was noted by the biologist that there was approximately less than 1% germination of the hydroseed. To date, there is little change. A thorough study on what can be done in order to improve vegetative cover, as noted on January 19, 2012, is still suggested (Photos 21, 22, 23, 24, and 25).

M-4.2.12 (City)

Site Erosion

c. A temporary vegetation cover shall be established on all slopes that are to remain inactive for a period longer than 180 days.

Current Status/Comments - On the December 5, 2011 monitoring site visit it was noted by the biologist that 85 acres had been hydroseeded. That amounted to most of the landfill slopes. On December 21, 2011 growth and vegetative cover was minimal. On the January 19, 2012 site visit it was noted by the project manager that the vegetative cover remained minimal. It was suggested in the Further Review Needed that Republic have their biological consultant evaluate the growth and provide analysis and recommendations in order to improve the vegetative cover. On the February 29, 2012 site visit it was noted by the biologist that there was approximately less than 1% germination of the hydroseed. To date, there is little change. A thorough study on what can be done in order to improve vegetative cover, as noted on January 19, is still suggested (Photos 21, 22, 23, 24 and 25). A map showing which areas are

to remain inactive for longer than 180 days should be made available to the agencies and monitor so that compliance with this condition can be verified.

M-4.2.12(26) (City)

Truck Travel and Fugitive Dust Emissions

- a. *To minimize fugitive dust emissions, the access roadways shall be paved, as necessary, and haul roads to the working face areas shall be hard packed and/or covered with a crushed stone layer. Paved and/or crushed stone roadways shall extend up to new active fill areas as development of the landfill progresses.*

Current Status/Comments - The access roads need to be paved in order to be in compliance with this condition. Due to a reactivation of an ancient landslide by excavation that occurred in January of 2011 and earth movement in February 2012, temporary access roads are being used to travel to permanent facilities and the active fill area. The re-aligned access roads are scheduled for completion and paving by mid-May 2012 (Photo 21).

M-4.9.4 (125) (City)

The landfill operator shall maintain perimeter fencing in and around the site in accordance with CCR, Title 14, § 17658 to discourage illegal entry to the landfill. Where existing topography conditions create an effective barrier, no perimeter fencing shall be installed. Entrance and access gates shall remain locked when the landfill facility is not in operation. All existing perimeter fencing shall be inspected on a routine basis by the landfill operator, and necessary repairs shall be made to ensure a continued deterrent for unauthorized entry to the project site. Additionally, the landfill operator shall maintain posted "no trespassing" signage at the exterior perimeter fencing nearest the project site entrance.

Current Status/Comments - On the March 29, 2012 monitoring visit it was noted by the hazardous waste-risk of upset/ engineer that the access gate in the block wall, south of the entrance on San Fernando Road, was not locked. This gate should be secured to prevent illegal entry (Photo 29).

Revegetation 44.F (County)

Revegetation

F. The Permittee shall employ an expert or experts, including an independent, qualified biologist, to satisfy this Condition No. 44. Soil sampling and laboratory analysis shall be conducted in all areas that are required to be re-vegetated before any re-vegetation occurs to identify chemical or physical soil properties that may adversely affect plant growth or establishment. Soil amendments and fertilizer recommendations shall be applied and plant materials selected, based on the above-referenced testing procedures and results. To the extent possible, plant types shall blend with species indigenous to the area, be drought tolerant, and be capable of rapid growth. The selected plants shall not include non-indigenous species that are likely to be invasive of adjacent natural areas.

Current Status/Comments - It was noted by the project manager on the March 29, 2012 site visit that Republic's biologist should evaluate and make recommendations to take corrective action to establish vegetation on previously seeded areas that have not germinated. Vegetation establishment has been a constant issue throughout the duration of this monitoring period (Photos 22, 23, 24 and 25).

Surface Water – 2.03 (County)

As development of the site proceeds, surface drainage control facilities will be maintained so that surface water runoff is diverted from the working faces and isolated from contact with the waste. On-site drainage control channels will be designed per CCR, Title 23, Division 3 Chapter 15, Article 3, § 2546, which mandates the requirements for a capital storm event (100-year, 24-hour precipitation).

Current Status/Comments - Throughout the duration of this monitoring period, drainage and runoff facilities have continually had maintenance issues. It was stated by the hydrologist/ engineer that the current amount of sediment in the basins should not affect the intended performance. Due to the constant change of cell development and infrastructure in the landfill area, the site drainage plan should be available to the agencies and monitor.

Surface Water – 2.05 (County)

Placement of a series of underdrains in areas where seeps and springs have been identified will collect and convey any water from these sources.

Current Status/Comments - During the February 8, 2012 site monitoring visit a seep was observed by the civil/ geotechnical engineer in the area that was being excavated for the next cell development. Plans were not available for review to verify that a sub-drain system was designed and would be installed. Design plans should be made available for agency and monitor review.

Surface Water – 2.10 (County)

The surface water collection system shall be designed to collect runoff and collect/retain suspended solids. Water leaving the sedimentation basin shall be monitored in accordance with NPDES requirements. Sediment shall be cleaned out of the sedimentation basins after every significant storm.

Current Status/Comments - Throughout the duration of the monitoring period, sedimentation buildup has been a constant issue. At the March 29, 2012 site monitoring visit it was noted by the project manager that the terminal sedimentation basin contained a significant amount of sediment, with a major portion of the drainage towers blocked by sediment. The oversight of the clean out is done by the LEA and will be accomplished when conditions allow.

BIOTA – 4.27 (County)

Venturan Coastal Sage Scrub: A detailed conceptual mitigation plan shall be prepared by the permittee and shall contain specific information on planting, maintenance, and monitoring. A revegetation plan that includes coastal sage scrub restoration can feasibly occur on-site. The implementation of this plan will provide on-site mitigation greater than 1:1 to offset the loss of coastal sage scrub.

Current Status/Comments - During the February 29, 2012 site monitoring visit Republic's staff stated to the biologist that plans for a revised revegetation plan, which was expected in late 2011, have been rethought. Republic is now going to continue to follow the Chambers Plan from 2008. Confirmation needs to be made that staying with the Chambers Plan is acceptable to the County. Sage mitigation areas continue to support only moderate plant cover. The vast majority of this cover continues to be non-native in origin, primarily annual grasses (*Bromus* and *Hordeum spp.*) and forbs (*Brassica spp.*). Almost no native shrub species were observed germinating below parent shrubs.

Air Quality – 6.01 (County)

(8) All access roads to permanent facilities, except those infrequently used, shall be paved. The paved access road to the fill areas shall be extended as new areas are opened to minimize the length of the dirt road. Winter deck access roads shall be paved or surfaced with recycled asphalt, aggregate materials or soil stabilization products to minimize the length of untreated dirt. Curbs and gutters shall be constructed. At least twice daily, watering or wet sweeping of paved roads to remove windblown surface dust shall occur. (AP- 42 assigns a control efficiency of 50 percent for twice weekly cleaning of industrial paved roads. With twice daily cleaning, a control efficiency in excess of 90 percent is predicted).

Current Status/Comments - Due to the January 2011 landslide and February 2012 earth movement, temporary access roads are being used to travel to the permanent facilities and the active fill area. Paving is scheduled to be done when the new access roadway realignment is complete. Paving is scheduled for completion in mid-May 2012. The air quality-environmental specialist/ engineer observed no problems with dust related to use of these temporary roads.

Summary of Requested Documents

The following documents, reports and plans are recommended to be made available at the main office for agency and monitor review in order to assist in streamlining the monitoring process.

- a) Reports from the engineering geologist activities/ observations during landslide material removal operations
- b) Design report for the LCTF
- c) Updated erosion prevention plan
- d) Republic's biologist report evaluating the results of hydroseeding, as well as analysis and recommendations
- e) Comprehensive geotechnical report
- f) Site drainage plan, including surface and underdrains with complementing revegetation plan
- g) Detailed conceptual mitigation plan/ revegetation plan that includes coastal sage scrub restoration
- h) A schedule for the start of construction to create wetlands at the Chatsworth Reservoir site
- i) Documentation of a program that charges differential fees for partially loaded trucks and for trucks arriving at the facility during peak commuting hours
- j) Current Fill Sequence Plan
- k) An updated perimeter marker survey map showing the exact spacing, location and characteristics of the survey monuments (including elevations)
- l) A plan/ report of the liner system and LCRS design/ installation when the next phase of landfill liner installation begins, as well as verification that appropriate Testing/ Quality Assurance/ Quality Control (QA/QC) procedures are followed
- m) A plan/ report of the liner interceptor ditches design/ installation to ensure that surface runoff is appropriately conveyed to the existing flood control channel directly east of the project site entrance
- n) Maps showing areas that are at final elevation and bench ditches that will connect to drainage ditches to protect against natural surface runoff

- o) A preventative maintenance plan and summary of monitoring reports of inspections of facility equipment, systems and stormwater management devices to detect conditions that may cause breakdowns or failures resulting in discharge of materials into stormwater
- p) Current erosion control plans reflecting new erosion control measures for current site development activities
- q) A plan showing areas inactive for 180 days or longer with records tracking fill areas and interim reclamation and re-vegetation, including the timing of proposed work, as well as a plan showing current and projected areas to be within ten feet of the limits of fill

Conclusions

In this reporting period, all of the mitigation measures and/or conditions monitoring tasks have been monitored by UltraSystems personnel. As shown by the Non-Compliant and Further Review Needed sections above, the Landfill is actively working toward being fully compliant on mitigation measures and/or conditions, with no non-compliant conditions observed. The March Mitigation Monitoring Summary Excel sheets track the progress and completion of tasks as they were accomplished.

Sunshine Canyon Landfill March 2012 Mitigation Monitoring Summary / City – See Excel Spreadsheet

Sunshine Canyon Landfill March 2012 Mitigation Monitoring Summary / County – See Excel Spreadsheet

Appendix 1

Relevant Site Photos



**Photo 1: Q.C.3.g February Landslide - Access Road
(February 15, 2012)**



**Photo 2: Q.C.3.g February Landslide Cracks - Access Road
(February 15, 2012)**



**Photo 3: Q.C.3.g February Landslide - Access Road
(February 15, 2012)**



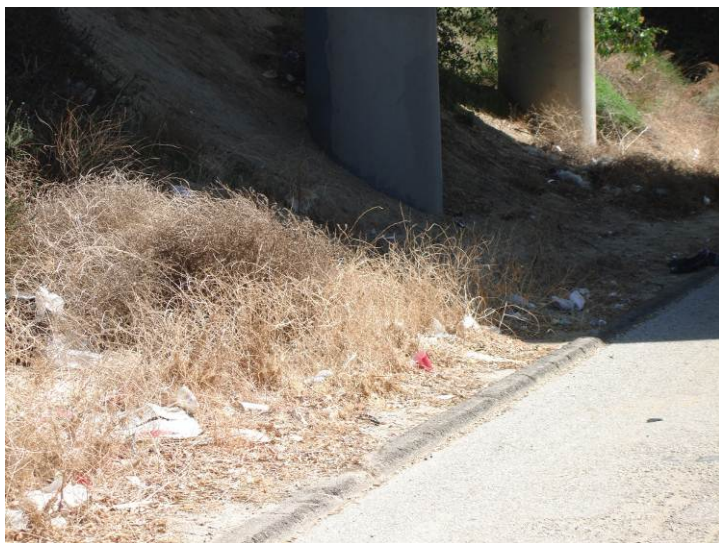
**Photo 4: Q.C.3.g New Cell Development
(February 15, 2012)**



**Photo 5: M-4.9.3 – 110 Sierra Highway at SR 14 Overpass
(March 14, 2012)**



**Photo 6: M-4.9.3 – 110 Sierra Highway at SR 14 Overpass
(March 14, 2012)**



**Photo 7: M-4.9.3 – 110 Sierra Highway at SR 14 Overpass
(March 14, 2012)**



**Photo 8: M-4.9.3 – 110 Sierra Highway at San Fernando Road
(January 19, 2012)**



**Photo 9: M-4.9.3 – 110 Sierra Highway at Beale's Cut
(January 19, 2012)**



**Photo 10: M-4.1.4 – 10 Leachate Control Treatment Facility
(January 19, 2012)**



**Photo 11: M-4.3.4.1 – 43 Basin A
(March 14, 2012)**



**Photo 12: M-4.3.4.1 – 43 Basin A
(March 14, 2012)**



**Photo 13: M-4.3.4.1 – 43 Basin D
(March 14, 2012)**



**Photo 14: M-4.3.4.1 – 43 Basin D
(March 14, 2012)**



**Photo 15: M-4.3.4.1 – 43 Basin D
(March 14, 2012)**



**Photo 16: M-4.3.4.1 – 43 Basin B
(March 14, 2012)**



**Photo 17: M-4.3.4.1 – 43 Main (Terminal) Basin
(March 14, 2012)**



**Photo 18: M-4.3.4.1 – 43 Main (Terminal) Basin
(March 14, 2012)**



**Photo 19: M-4.3.4.1 – 43 Cracked Concrete at Main Basin
(March 14, 2012)**



**Photo 20: M-4.3.4.1 – 43 Cracked Concrete at Main Basin
(March 14, 2012)**



**Photo 21: M-4.3.1 New Access Road
(March 14, 2012)**



**Photo 22: Site View
(March 14, 2012)**



**Photo 23: Site View
(March 14, 2012)**



**Photo 24: Site View
(March 14, 2012)**



**Photo 25: Site View
(March 14, 2012)**



**Photo 26: Site View
(March 14, 2012)**



**Photo 27: Traffic 57
(March 14, 2012)**



**Photo 28: M-4.3.1
(March 14, 2012)**



Photo 29: Site View
(March 14, 2012)

Appendix 2

Site Visit Attendees by Date of Site Visit

UltraSystems Staff; Field of Expertise:

James Aidukas; Project Manager, Permitting, and Operations/ Engineer

Susan Foster; Hazardous Waste–Risk of Upset/ Engineer

Tarik Hadj-Hamou; Civil/ Geotechnical Engineer

Ian Hutchison; Hydrologist/ Engineer

Mike Lindsay; Air Quality, Noise, Vehicle Emissions, Environmental Specialist/ Engineer

Riley Pratt; Biologist

December 5, 2011: James Aidukas (UltraSystems), John Nelson (LA County DPW Inspector), Mike Lindsay (UltraSystems), Tarik Hadj-Hamou (UltraSystems)

December 21, 2011: James Aidukas (UltraSystems), John Nelson (LA County DPW Inspector), Mike Lindsay (UltraSystems)

January 19, 2012: James Aidukas (UltraSystems), John Nelson (LA County DPW Inspector), Mike Lindsay (UltraSystems), Tarik Hadj-Hamou (UltraSystems)

February 8, 2012: James Aidukas (UltraSystems), John Nelson (LA County DPW Inspector), Mike Lindsay (UltraSystems), Tarik Hadj-Hamou (UltraSystems)

February 15, 2012: Brian Smith (LA County), John Nelson (LA County DPW Inspector), Rob Larson (LA County), Tarik Hadj-Hamou (UltraSystems)

February 29, 2012: James Aidukas (UltraSystems), John Nelson (LA County DPW Inspector), Riley Pratt (UltraSystems), Susan Foster (UltraSystems)

March 14, 2012: James Aidukas (UltraSystems), John Nelson (LA County DPW Inspector), Ian Hutchison (UltraSystems)

March 29, 2012: James Aidukas (UltraSystems), John Nelson (LA County DPW Inspector), Mike Lindsay (UltraSystems)

Sunshine Canyon Landfill Mitigation Monitoring Summary - City 12-05-2011 through 12-21-2011)

Reference #	Mitigation #	City Mitigation Measures and Conditions Monitored by Discipline	Monitoring Frequency	12/5/2011	Status*	Further Review Needed/Comments**	Resolved*	12/21/2011	Status*	Further Review Needed/Comments**	Resolved*							
Project Manager																		
Q - A.3.		Definitions	info	/				/										
Q - A.6.		Submit Annual Reports	June yearly	/				/										
Q - A.10.		Provision of Fees	yearly	/				/										
Q - B.1.		Permitted/Prohibited Landfill Uses	yearly	/				/										
Q - B.2		Approval of Landfill	ongoing	✓	C	NONE		✓	C	NONE								
Q - B.2.c.		Ancillary Uses and Facilities	ongoing	✓	C	NONE		✓	C	NONE								
		Ancillary Uses and Facilities																
Q - B.2.d (3)		10 Year Phase Review	2015	/				/										
		10 Year Phase Review																
Q - B.4.d.		Inert/Exempt Materials	info	/				/										
Q - B.5.a.		Prohibited Waste	info	/				/										
Q - B.6.		Waste Diversion	ongoing	✓	C	NONE		✓	C	NONE								
Q - C.3.g.		Paved Access Roads	ongoing	✓	FRN	I-c		✓	FRN	I-d								
Q - C.3.h.		Surfacing of Access Roads	ongoing	✓	C	NONE		✓	C	NONE								
Q - C.5.		Graffiti Removal and Deterrence	ongoing	✓	C	NONE		✓	C	NONE								

* C = Compliant, NC = Non-Compliant, FRN = Further Review Needed, R = Resolved

** See Appendix I for Comments

Checkmark = Condition or mitigation was monitored

/ = Yearly or non-ongoing monitoring frequency

Sunshine Canyon Landfill Mitigation Monitoring Summary - City 12-05-2011 through 12-21-2011)

Reference #	Mitigation #	City Mitigation Measures and Conditions Monitored by Discipline	Monitoring Frequency	12/5/2011	Status*	Further Review Needed/Comments**	Resolved*	12/21/2011	Status*	Further Review Needed/Comments**	Resolved*							
Q - C.10.c.		Evaluation of Beneficial Gas Usage	June yearly															
Q - C.10.d. (1)		Alternative Fuel Vehicles	status	✓	C	I-c												
Q - C.10.d. (2)		Alternative Fuel Refuse Collection Trucks	status	✓	C	I-c												
Q - C.12.a.		Technical Advisory Committee	info	/				/										
Q - C.12.c.		Contract for Mitigation Monitoring	info	/				/										
Q - C.12.c.		Contract for Mitigation Monitoring-5 years	info	/				/										
T - 4		Fire Plan	status	✓	FRN	I-c												
T - 5.j.		Trip Diversion	status	✓	C	NONE		✓	C	NONE								
T - 6		Satisfactory Street Lighting	status	/				/										
M - 4.1.1	7	Reabandonment Procedures	status	✓	C	NONE		✓	C	NONE								
M - 4.1.4	11	Post-5.0 Earthquake Analysis	upon event		NA	NONE			NA	NONE								
M - 4.2.12	27	Heavy Equipment Operations	ongoing	✓		NONE		✓		NONE								
M - 4.2.12		Heavy Equipment Operations	ongoing	✓		NONE		✓		NONE								
M - 4.2.12	28	Site Erosion-Cover	ongoing	✓		NONE		✓		NONE								
M - 4.2.12		Site Erosion-Cell Height	ongoing	✓		NONE		✓		NONE								
M - 4.2.12		Site Erosion-Sealant	ongoing	✓		NONE		✓		NONE								

* C = Compliant, NC = Non-Compliant, FRN = Further Review Needed, R = Resolved

** See Appendix I for Comments

Checkmark = Condition or mitigation was monitored

/ = Yearly or non-ongoing monitoring frequency

Sunshine Canyon Landfill Mitigation Monitoring Summary - City 12-05-2011 through 12-21-2011)

Reference #	Mitigation #	City Mitigation Measures and Conditions Monitored by Discipline	Monitoring Frequency	12/5/2011	Status*	Further Review Needed/Comments**	Resolved*	12/21/2011	Status*	Further Review Needed/Comments**	Resolved*							
M - 4.2.13	29	LFG Control Measures	ongoing	-	-	I-c		-	-	I-d								
M - 4.2.13	30	Operational Odor Control Techniques	ongoing	-	-	I-c		-	-	I-d								
M - 4.2.13	31	Solid Waste Compaction	ongoing	✓	C	NONE		✓	C	NONE								
M - 4.2.13	32	LFG Collection and Recovery System	ongoing	-	-	I-c		-	-	I-d								
M - 4.2.13	33	Odor Control Measures	ongoing	-	-	I-c		-	-	I-d								
M - 4.2.13	34	Odor/LFG Monitoring	ongoing	-	-	I-c		-	-	I-d								
		Periodic LFG Monitoring		-	-	I-c		-	-	I-d								
M - 4.3.2	52	LFG Migration Mitigation	ongoing	✓	C	NONE		✓	C	NONE								
M - 4.3.2	57	Dust Control Water	ongoing	✓	C	NONE		✓	C	NONE								
M - 4.4.2	69	Offsite Mitigation Sites	status	✓	C	NONE		✓	C	NONE								
M - 4.4.2	70	Purchasing Wetland Credit	status	/				/										
M - 4.4.2	71	Funding-Invasive Species Eradication Program	status	/				/										
M - 4.6	85	Site Lighting	status	✓	C	NONE		✓	C	NONE								
M - 4.7.1	86	Open Space Buffer Area	ongoing															
M - 4.9.3	106	Litter Minimization	ongoing	✓	C	NONE		✓	C	NONE								
M - 4.9.3	107	Litter/Debris Containment	ongoing	✓	C	NONE		✓	C	NONE								
M - 4.9.3	108	Vehicle Tarping Requirements	ongoing	✓	C	NONE		✓	C	NONE								
M - 4.9.3	109	Periodic Offsite Litter Pickup	ongoing	✓	C	NONE		✓	C	NONE								

* C = Compliant, NC = Non-Compliant, FRN = Further Review Needed, R = Resolved

** See Appendix I for Comments

Checkmark = Condition or mitigation was monitored

/ = Yearly or non-ongoing monitoring frequency

Sunshine Canyon Landfill Mitigation Monitoring Summary - City 12-05-2011 through 12-21-2011)

Reference #	Mitigation #	City Mitigation Measures and Conditions Monitored by Discipline	Monitoring Frequency	12/5/2011	Status*	Further Review Needed/Comments**	Resolved*	12/21/2011	Status*	Further Review Needed/Comments**	Resolved*							
M - 4.9.3	110	Illegal Dumping Activities	ongoing	✓	C	NONE		✓	C	I-d								
M - 4.9.3	111	Radio Dispatch Litter Control	ongoing	✓	C	NONE		✓	C	NONE								
M - 4.9.3	112	Litter Control	ongoing	✓	C	NONE		✓	C	NONE								
M - 4.9.5	127	Address Concerns of Citizens' Advisory Committee	ongoing	/				/										
M - 4.9.6	128	Landfill Gas/Collection System-Unsafe Methane Levels	ongoing	/				/										
M - 4.9.6	129	Landfill Gas/Collection System-Detection/Training	ongoing															
M - 4.9.6	130	Landfill Gas/Collection System-Risk Mitigation	ongoing															
M - 4.16.4	176	Reclaimed Water	status	/				/										
M - 4.16.4	177	Water Conservation	ongoing	✓	C	NONE		✓	C	NONE								
Civil & Geotechnical Engineer																		
M - 4.1.1	2	Grading Outside of Conceptual Grading Plan Area	ongoing	✓	C	NONE		✓	C	NONE								
M - 4.1.1	3	Unsuitable Material Removal/Buffer Zones	ongoing	✓	N/A	NONE		✓	N/A	NONE								
M - 4.1.1	4	Grading Outside of Landfill Footprint	ongoing	✓	C	NONE		✓	C	NONE								
M - 4.1.1	5	Grading Activity Compliance	ongoing	✓	C	NONE		✓	C	NONE								
M - 4.1.2	8	Landslide Guidelines	ongoing	✓	C	I-c												

* C = Compliant, NC = Non-Compliant, FRN = Further Review Needed, R = Resolved

** See Appendix I for Comments

Checkmark = Condition or mitigation was monitored

/ = Yearly or non-ongoing monitoring frequency

Sunshine Canyon Landfill Mitigation Monitoring Summary - City 12-05-2011 through 12-21-2011)

Reference #	Mitigation #	City Mitigation Measures and Conditions Monitored by Discipline	Monitoring Frequency	12/5/2011	Status*	Further Review Needed/Comments**	Resolved*	12/21/2011	Status*	Further Review Needed/Comments**	Resolved*							
M - 4.1.2	9	Soil Stabilization	ongoing	✓	FRN	NONE												
M - 4.1.4	10	Landfill Design	ongoing	✓	C	I-c												
M - 4.1.4	11	Earthquake Operations Checklist	upon event	✓	FRN	I-c												
M - 4.1.5	12	Geologic Hazards - Liquefaction	ongoing		N/A				N/A									
M - 4.1.5	13	Design/Construction-Liquefaction	ongoing	✓	N/A	I-c			N/A									
M - 4.1.5	14	Design/Construction-Containment Structures	ongoing	✓	C	I-c		✓	C	NONE								
M - 4.1.6	15	Refuse Slope Gradients	ongoing	✓	C	NONE		✓	C	NONE								
M - 4.1.6	16	Cut and Fill Slope Gradients	ongoing	✓	C	NONE		✓	C	NONE								
M - 4.1.6	17	Final Slope Factors of Safety	ongoing	✓	C	NONE		✓	C	NONE								
M - 4.1.6	18	Survey Monuments	ongoing					✓	C	I-d								
M - 4.3.2	47	Landfill Liner	ongoing	✓	N/A	I-c			N/A									
M - 4.3.2	48	Landfill Liner	ongoing	✓	N/A	I-c			N/A									
M - 4.3.2	54	Preliminary Closure/Postclosure Plan	status	✓	N/A	I-c		✓	N/A	/								
M - 4.3.2	55	Landfill Design/Operation/Final Closure Monitoring	status	✓	N/A	I-c		✓	N/A	/								
M - 4.3.2	56	Cover Application	ongoing	✓	C	I-c												
M - 4.14.1	155	Access Roadway Grade	ongoing	✓	C	I-c												
M - 4.18	178	Landfill Elevation Exceedance	ongoing	✓	C	I-c												
Hydrologist																		

* C = Compliant, NC = Non-Compliant, FRN = Further Review Needed, R = Resolved

** See Appendix I for Comments

Checkmark = Condition or mitigation was monitored

/ = Yearly or non-ongoing monitoring frequency

Sunshine Canyon Landfill Mitigation Monitoring Summary - City 12-05-2011 through 12-21-2011)

Reference #	Mitigation #	City Mitigation Measures and Conditions Monitored by Discipline	Monitoring Frequency	12/5/2011	Status*	Further Review Needed/Comments**	Resolved*	12/21/2011	Status*	Further Review Needed/Comments**	Resolved*							
M - 4.1.4	11	Earthquake Operations Checklist	upon event	✓	N/A			✓	N/A									
M - 4.3.1	36	Surface Water Infiltration Minimization	ongoing	✓	C	I-c		✓	C	I-d								
M - 4.3.1	37	Surface Drainage Systems	ongoing	✓	C	I-c		✓	C	I-d								
M - 4.3.1	38	Permanent/Temporary Ditches	ongoing	✓	C	NONE		✓	C	NONE								
M - 4.3.1	39	Drainage Protection	ongoing	✓	C	I-c		✓	C	I-d								
M - 4.3.1	40	SWRCB Permit Coverage	ongoing	✓	C	NONE		✓	C	NONE								
M - 4.3.1	41	Surface Water Collection System	ongoing	✓	C	I-c												
M - 4.3.1	42	Surface Water Quality Monitoring	ongoing		N/A				N/A									
M - 4.3.1	43	Sediment Basin Maintenance	ongoing	✓	FRN	I-c		✓	FRN	I-d								
M - 4.3.1	44	Final Landfill Cover	ongoing	✓	N/A	I-c			N/A									
M - 4.3.1	45	Erosion Control Plan	ongoing	✓	FRN	I-c		✓	FRN	I-d								
M - 4.3.1	46	Preventive Maintenance Program	ongoing	✓	C	I-c		✓	C	I-d								
M - 4.3.2	49	Interception of Groundwater Seepage	ongoing		N/A				N/A									
M - 4.3.2	50	LCRS/Leachate Monitoring	ongoing		N/A				N/A									
M - 4.3.2	51	LCRS Monitoring	ongoing		N/A				N/A									
Biologist																		

* C = Compliant, NC = Non-Compliant, FRN = Further Review Needed, R = Resolved

** See Appendix I for Comments

Checkmark = Condition or mitigation was monitored

/ = Yearly or non-ongoing monitoring frequency

Sunshine Canyon Landfill Mitigation Monitoring Summary - City 12-05-2011 through 12-21-2011)

Reference #	Mitigation #	City Mitigation Measures and Conditions Monitored by Discipline	Monitoring Frequency	12/5/2011	Status*	Further Review Needed/Comments**	Resolved*	12/21/2011	Status*	Further Review Needed/Comments**	Resolved*							
M - 4.1.1	6	Slope Erosion Control	ongoing															
M - 4.2.11	23	Revegetation/Excavation	ongoing	✓	FRN	I-c		✓	FRN	I-d								
M - 4.2.12		Temporary Vegetation Cover	ongoing	✓	FRN	I-c		✓	FRN	I-d								
M - 4.4.1	60	Coastal Sage Scrub Mitigation Plan	ongoing															
M - 4.4.1	61	Coastal Sage Scrub Seeding	ongoing															
M - 4.4.1	62	Mariposa Lily Mitigation Plan	ongoing															
M - 4.4.1	63	San Diego Horned Lizard Mitigation	ongoing															
M - 4.4.1	64	California Gnatcatcher Surveys	ongoing	/				/										
M - 4.4.1	65	Least Bell's Vireo Surveys	ongoing	/				/										
M - 4.4.1	66	Western Burrowing Owl Surveys	ongoing	/				/										
M - 4.4.1	67	Migratory Bird Treaty Act	ongoing	/				/										
M - 4.4.1	68	Raptor Nests Habitat	ongoing	/				/										
M - 4.4.3	72	Native Tree Mitigation	ongoing															
M - 4.4.3	73	Nonnative Tree Mitigation	status															
M - 4.4.3	74	Mitigation Tree Planting	ongoing	✓	C	NONE		✓	C	NONE								
M - 4.4.3	75	Tree Planting Mitigation Site Prep	ongoing	✓	C	NONE		✓	C	NONE								
M - 4.4.3	76	Poultry Wire Screen	ongoing	✓	C	NONE		✓	C	NONE								

* C = Compliant, NC = Non-Compliant, FRN = Further Review Needed, R = Resolved

** See Appendix I for Comments

Checkmark = Condition or mitigation was monitored

/ = Yearly or non-ongoing monitoring frequency

Sunshine Canyon Landfill Mitigation Monitoring Summary - City 12-05-2011 through 12-21-2011)

Reference #	Mitigation #	City Mitigation Measures and Conditions Monitored by Discipline	Monitoring Frequency	12/5/2011	Status*	Further Review Needed/Comments**	Resolved*	12/21/2011	Status*	Further Review Needed/Comments**	Resolved*							
M - 4.4.3	77	Backfill Material	ongoing	✓	C	NONE		✓	C	NONE								
M - 4.4.3	78	Tree Planting Procedure	ongoing	✓	C	NONE		C	C	NONE								
M - 4.4.3	79	Tree Area Mulching	ongoing	✓	C	NONE		✓	C	NONE								
M - 4.4.3	80	Tree Irrigation/Fertilization	ongoing	✓	C	I-c												
M - 4.4.3	81	Irrigation System	ongoing	✓	C	NONE		✓	C	NONE								
M - 4.4.3	82	Annual Tree Monitoring Report	annually															
M - 4.9.2	96	Vector Activity Monitoring	ongoing	✓	C	NONE		✓	C	NONE								
M - 4.9.2	97	Vector Elimination	ongoing	✓	C	NONE		✓	C	NONE								
M - 4.9.2	98	Fly Control	ongoing	✓	C	NONE		✓	C	NONE								
M - 4.9.2	99	Rodent Control	ongoing	✓	C	NONE		✓	C	NONE								
M - 4.9.2	100	Operational Vector-Limiting Activity	ongoing	✓	C	NONE		✓	C	NONE								
M - 4.9.2	101	Equipment Cleanliness/Maintenance	ongoing	✓	C	NONE		✓	C	NONE								
M - 4.9.2	102	Storage of Vector-Attracting Items	ongoing	✓	C	NONE		✓	C	NONE								
M - 4.9.2	103	Salvaged Material Storage-Vector Control	ongoing	✓	C	NONE		✓	C	NONE								
M - 4.9.2	104	Periodic Vector Inspections	ongoing	✓	C	NONE		✓	C	NONE								
M - 4.9.2	105	Implementation of Vector Control Measures	ongoing															
Air Quality & Noise Specialist																		

* C = Compliant, NC = Non-Compliant, FRN = Further Review Needed, R = Resolved

** See Appendix I for Comments

Checkmark = Condition or mitigation was monitored

/ = Yearly or non-ongoing monitoring frequency

Sunshine Canyon Landfill Mitigation Monitoring Summary - City 12-05-2011 through 12-21-2011)

Reference #	Mitigation #	City Mitigation Measures and Conditions Monitored by Discipline	Monitoring Frequency	12/5/2011	Status*	Further Review Needed/Comments**	Resolved*	12/21/2011	Status*	Further Review Needed/Comments**	Resolved*							
M - 4.2.11	19	Emissions Mitigation Measures	ongoing	✓	C	I-c		✓	C	I-d								
M - 4.2.11	19	Construction Curtailing due to Pollution	ongoing	✓	C	NONE		✓	C	NONE								
M - 4.2.11	20	Dust Lofting Minimization	ongoing	✓	C	NONE		✓	C	NONE								
M - 4.2.11	21	Wind Speed Monitoring	ongoing	✓	C	NONE		✓	C	NONE								
M - 4.2.11	22	Grading-Dust Reduction	ongoing	✓	C	NONE		✓	C	NONE								
M - 4.2.12	24	Construction Equipment Maintenance	ongoing	✓	C	I-c		✓	C	I-d								
M - 4.2.12		Construction Curtailing due to Pollution	ongoing	✓	C	NONE		✓	C	NONE								
M - 4.2.12	25	Refuse Trucks-Maintenance	ongoing	✓	C	I-c		✓	C	I-d								
M - 4.2.12		Refuse Trucks-Engine	ongoing	✓	C	I-c		✓	C	I-d								
M - 4.2.12		Refuse Trucks-Fee Schedule	ongoing	/				/										
M - 4.2.12		Refuse Trucks-Fee Schedule Delivery Time	ongoing	/				/										
M - 4.2.12		Refuse Trucks-Idling	ongoing	/				/										
M - 4.2.12		Refuse Trucks-Emissions	ongoing	/				/										
M - 4.2.12	26	Truck Travel and Fugitive Dust Emissions	ongoing	✓	C	NONE		✓	C	NONE								
M - 4.2.12		Truck Travel and Fugitive Dust Emissions	ongoing	✓	C	NONE		✓	C	NONE								
M - 4.2.12		Truck Travel and Fugitive Dust Emissions	ongoing	✓	C	NONE		✓	C	NONE								
M - 4.2.12		Truck Travel and Fugitive Dust Emissions	ongoing	✓	C	NONE		✓	C	NONE								
M - 4.5.2	83	Landfill Hours	info	/				/										

* C = Compliant, NC = Non-Compliant, FRN = Further Review Needed, R = Resolved

** See Appendix I for Comments

Checkmark = Condition or mitigation was monitored

/ = Yearly or non-ongoing monitoring frequency

Sunshine Canyon Landfill Mitigation Monitoring Summary - City 12-05-2011 through 12-21-2011)

Reference #	Mitigation #	City Mitigation Measures and Conditions Monitored by Discipline	Monitoring Frequency	12/5/2011	Status*	Further Review Needed/Comments**	Resolved*	12/21/2011	Status*	Further Review Needed/Comments**	Resolved*							
M - 4.5.2	84	Landfill Equipment-Noise Reduction	ongoing	✓	C	I-c		✓	C	I-d								
		Hydrology, Hazardous Waste / Risk of Upset																
M - 4.3.2	53	Groundwater Monitoring Wells	ongoing															
M - 4.3.2	58	Operation as Class III Landfill	ongoing	✓	C	NONE		✓	C	NONE								
M - 4.3.2	59	Underground Fuel Storage	ongoing															
M - 4.9.1	90	Refuse Inspection Program	ongoing															
M - 4.9.1	91	Hazardous Waste Load-Checking	status															
M - 4.9.1	93	Hazardous Waste Detection Training	status															
M - 4.9.1	94	Spill Response Program	status															
M - 4.9.4	115	Safety Inspections/Checklists	ongoing															
M - 4.9.4	118	Accident/Injury reports, Inspections	status															
M - 4.9.4	121	Fire Prevention Plan	ongoing	✓	C	I-c												
M - 4.9.4	123	Personal Protective Equipment	ongoing															
M - 4.9.4	125	Site Access/Fencing	ongoing															
M - 4.14.1	147	Fire Response Capabilities	ongoing															
M - 4.14.1	148	Hydrant Installation	ongoing															

* C = Compliant, NC = Non-Compliant, FRN = Further Review Needed, R = Resolved

** See Appendix I for Comments

Checkmark = Condition or mitigation was monitored

/ = Yearly or non-ongoing monitoring frequency

Sunshine Canyon Landfill Mitigation Monitoring Summary - City 12-05-2011 through 12-21-2011)

Reference #	Mitigation #	City Mitigation Measures and Conditions Monitored by Discipline	Monitoring Frequency	12/5/2011	Status*	Further Review Needed/Comments**	Resolved*	12/21/2011	Status*	Further Review Needed/Comments**	Resolved*							
Archaeologist																		
M - 4.19.1	183	Archaeological Resurvey	ongoing		NA				NA									
M - 4.19.1	184	Onsite Archaeologist	ongoing		NA				NA									
M - 4.19.1	185	Archaeological Resources	ongoing		NA				NA									
M - 4.19.1	186	Archaeological Resources	ongoing		NA				NA									
Paleontologist																		
M - 4.19.2	187	Paleontological Resources Resurvey	ongoing		NA				NA									
M - 4.19.2	188	Paleontological Resources Excavation	ongoing		NA				NA									
M - 4.19.2	189	Paleontological Resources Training	ongoing		NA				NA									
M - 4.19.2	190	Paleontological Resources Recovery	ongoing		NA				NA									
M - 4.19.2	191	Paleontological Resources Inspection	ongoing		NA				NA									
Potential Tasks																		

* C = Compliant, NC = Non-Compliant, FRN = Further Review Needed, R = Resolved

** See Appendix I for Comments

Checkmark = Condition or mitigation was monitored

/ = Yearly or non-ongoing monitoring frequency

Sunshine Canyon Landfill Mitigation Monitoring Summary - City 12-05-2011 through 12-21-2011)

Reference #	Mitigation #	City Mitigation Measures and Conditions Monitored by Discipline	Monitoring Frequency	12/5/2011	Status*	Further Review Needed/Comments**	Resolved*	12/21/2011	Status*	Further Review Needed/Comments**	Resolved*							
Q - A.6.																		
Q - A.6.																		
Q - A.7.																		

* C = Compliant, NC = Non-Compliant, FRN = Further Review Needed, R = Resolved

** See Appendix I for Comments

Checkmark = Condition or mitigation was monitored

/ = Yearly or non-ongoing monitoring frequency

Sunshine Canyon Landfill Mitigation Monitoring Summary - City 12-05-2011 through 12-21-2011)

Reference #	Mitigation #	City Mitigation Measures and Conditions Monitored by Discipline	Monitoring Frequency	12/5/2011	Status*	Further Review Needed/Comments**	Resolved*	12/21/2011	Status*	Further Review Needed/Comments**	Resolved*							
Q - A.7.																		

* C = Compliant, NC = Non-Compliant, FRN = Further Review Needed, R = Resolved

** See Appendix I for Comments

Checkmark = Condition or mitigation was monitored

/ = Yearly or non-ongoing monitoring frequency

Sunshine Canyon Landfill Mitigation Monitoring Summary - City 12-05-2011 through 12-21-2011)

Reference #	Mitigation #	City Mitigation Measures and Conditions Monitored by Discipline	Monitoring Frequency	12/5/2011	Status*	Further Review Needed/Comments**	Resolved*	12/21/2011	Status*	Further Review Needed/Comments**	Resolved*							
Q - A.9.a.																		

* C = Compliant, NC = Non-Compliant, FRN = Further Review Needed, R = Resolved

** See Appendix I for Comments

Checkmark = Condition or mitigation was monitored

/ = Yearly or non-ongoing monitoring frequency

Sunshine Canyon Landfill Mitigation Monitoring Summary - City 12-05-2011 through 12-21-2011)

Reference #	Mitigation #	City Mitigation Measures and Conditions Monitored by Discipline	Monitoring Frequency	12/5/2011	Status*	Further Review Needed/Comments**	Resolved*	12/21/2011	Status*	Further Review Needed/Comments**	Resolved*							
Q - B.4.																		
Q - C.10.d (3)																		
Q - C.10.d (4)																		
Q - C.10.d (5)																		

* C = Compliant, NC = Non-Compliant, FRN = Further Review Needed, R = Resolved

** See Appendix I for Comments

Checkmark = Condition or mitigation was monitored

/ = Yearly or non-ongoing monitoring frequency

Sunshine Canyon Landfill Mitigation Monitoring Summary - City 12-05-2011 through 12-21-2011)

Reference #	Mitigation #	City Mitigation Measures and Conditions Monitored by Discipline	Monitoring Frequency	12/5/2011	Status*	Further Review Needed/Comments**	Resolved*	12/21/2011	Status*	Further Review Needed/Comments**	Resolved*							
Q - C.10.d (6)																		
M - 4.1.2																		
M - 4.1.3																		

* C = Compliant, NC = Non-Compliant, FRN = Further Review Needed, R = Resolved

** See Appendix I for Comments

Checkmark = Condition or mitigation was monitored

/ = Yearly or non-ongoing monitoring frequency

Sunshine Canyon Landfill Mitigation Monitoring Summary - City 01-19-2012 through 03-29-2012)

Reference #	Mitigation #	City Mitigation Measures and Conditions Monitored by Discipline	Monitoring Frequency	1/19/2012	Status*	Further Review Needed/Comments**	Resolved*	2/8/2012	Status*	Further Review Needed/Comments**	Resolved*	2/29/2012	Status*	Further Review Needed/Comments**	Resolved*	3/14/2012	Status*	Further Review Needed/Comments**	Resolved*	3/29/2012	Status*	Further Review Needed/Comments**	Resolved*
Project Manager																							
Q - A.3.		Definitions	info	/				/				/				/				/			
Q - A.6.		Submit Annual Reports	June yearly	/				/				/				/				/			
Q - A.10.		Provision of Fees	yearly	/				/				/				/				/			
Q - B.1.		Permitted/Prohibited Landfill Uses	yearly	/				/				/				/				/			
Q - B.2		Approval of Landfill	ongoing	✓	C	NONE		✓	C	NONE		✓	C	NONE		✓	C	NONE		✓	C	NONE	
Q - B.2.c.		Ancillary Uses and Facilities	ongoing	✓	C	NONE		✓	C	NONE		✓	C	NONE		✓	C	NONE		✓	C	NONE	
		Ancillary Uses and Facilities																					
Q - B.2.d (3)		10 Year Phase Review	2015	/				/				/				/				/			
		10 Year Phase Review																					
Q - B.4.d.		Inert/Exempt Materials	info	/				/				/				/				/			
Q - B.5.a.		Prohibited Waste	info	/				/				/				/				/			
Q - B.6.		Waste Diversion	ongoing	✓	C	NONE		✓	C	NONE		✓	C	NONE		✓	C	NONE		✓	C	NONE	
Q - C.3.g.		Paved Access Roads	ongoing	✓	FRN	I-e		✓	FRN	I-f		✓	FRN	I-g		✓	FRN	I-h		✓	FRN	I-i	R
Q - C.3.h.		Surfacing of Access Roads	ongoing	✓	C	NONE		✓	C	NONE		✓	C	NONE		✓	C	NONE		✓	C	NONE	

* C = Compliant, NC = Non-Compliant, FRN = Further Review Needed, R = Resolved

** See Appendix I for Comments

Checkmark = Condition or mitigation was monitored

/ = Yearly or non-ongoing monitoring frequency

Sunshine Canyon Landfill Mitigation Monitoring Summary - City 01-19-2012 through 03-29-2012)

Reference #	Mitigation #	City Mitigation Measures and Conditions Monitored by Discipline	Monitoring Frequency	1/19/2012	Status*	Further Review Needed/Comments**	Resolved*	2/8/2012	Status*	Further Review Needed/Comments**	Resolved*	2/29/2012	Status*	Further Review Needed/Comments**	Resolved*	3/14/2012	Status*	Further Review Needed/Comments**	Resolved*	3/29/2012	Status*	Further Review Needed/Comments**	Resolved*
Q - C.5.		Graffiti Removal and Deterrence	ongoing	✓	C	NONE		✓	C	NONE		✓	C	NONE		✓	C	NONE		✓	C	NONE	
Q - C.10.c.		Evaluation of Beneficial Gas Usage	June yearly	✓	C	I-e						✓	C	I-g						✓	C	I-i	
Q - C.10.d. (1)		Alternative Fuel Vehicles	status									✓	FRN	I-g	R								
Q - C.10.d. (2)		Alternative Fuel Refuse Collection Trucks	status									✓	FRN	I-g									
Q - C.12.a.		Technical Advisory Committee	info	/				/				/				/				/			
Q - C.12.c.		Contract for Mitigation Monitoring	info	/				/				/				/				/			
Q - C.12.c.		Contract for Mitigation Monitoring-5 years	info	/				/				/				/				/			
T - 4		Fire Plan	status																	✓	C	I-i	R
T - 5.j.		Trip Diversion	status	✓	C	NONE		✓	C	NONE		✓	C	NONE		✓	C	NONE		✓	C	NONE	
T - 6		Satisfactory Street Lighting	status	/				/				/				/				/			
M - 4.1.1	7	Reabandonment Procedures	status	✓	C	NONE		✓	C	NONE		✓	C	NONE		✓	C	NONE		✓	C	NONE	
M - 4.1.4	11	Post-5.0 Earthquake Analysis	upon event			NONE			NA	NONE			NA	NONE			NA	NONE			NA	NONE	
M - 4.2.12	27	Heavy Equipment Operations	ongoing	✓		NONE		✓	C	NONE		✓	C	NONE		✓	C	NONE		✓	C	NONE	
M - 4.2.12		Heavy Equipment Operations	ongoing	✓		NONE		✓	C	NONE		✓	C	NONE		✓	C	NONE		✓	C	NONE	
M - 4.2.12	28	Site Erosion-Cover	ongoing	✓		NONE		✓	C	NONE		✓	C	NONE		✓	C	NONE		✓	C	NONE	

* C = Compliant, NC = Non-Compliant, FRN = Further Review Needed, R = Resolved

** See Appendix I for Comments

Checkmark = Condition or mitigation was monitored

/ = Yearly or non-ongoing monitoring frequency

Sunshine Canyon Landfill Mitigation Monitoring Summary - City 01-19-2012 through 03-29-2012)

Reference #	Mitigation #	City Mitigation Measures and Conditions Monitored by Discipline	Monitoring Frequency	1/19/2012	Status*	Further Review Needed/Comments**	Resolved*	2/8/2012	Status*	Further Review Needed/Comments**	Resolved*	2/29/2012	Status*	Further Review Needed/Comments**	Resolved*	3/14/2012	Status*	Further Review Needed/Comments**	Resolved*	3/29/2012	Status*	Further Review Needed/Comments**	Resolved*
M - 4.2.12		Site Erosion-Cell Height	ongoing	✓		NONE		✓	C	NONE		✓	C	NONE		✓	C	NONE		✓	C	NONE	
M - 4.2.12		Site Erosion-Sealant	ongoing	✓		NONE		✓	C	NONE		✓	C	NONE		✓	C	NONE		✓	C	NONE	
M - 4.2.13	29	LFG Control Measures	ongoing	-	-	I-e		-	-	I-f		-	-	I-g		-	-	I-h		-	-	I-i	
M - 4.2.13	30	Operational Odor Control Techniques	ongoing	-	-	I-e		-	-	I-f		-	-	I-g		-	-	I-h		-	-	I-i	
M - 4.2.13	31	Solid Waste Compaction	ongoing	✓	C	NONE																	
M - 4.2.13	32	LFG Collection and Recovery System	ongoing	-	-	I-e		-	-	I-f		-	-	I-g		-	-	I-h		-	-	I-i	
M - 4.2.13	33	Odor Control Measures	ongoing	-	-	I-e		-	-	I-f		-	-	I-g		-	-	I-h		-	-	I-i	
M - 4.2.13	34	Odor/LFG Monitoring	ongoing	-	-	I-e		-	-	I-f		-	-	I-g		-	-	I-h		-	-	I-i	
		Periodic LFG Monitoring		-	-	I-e		-	-	I-f		-	-	I-g		-	-	I-h		-	-	I-i	
M - 4.3.2	52	LFG Migration Mitigation	ongoing	✓	C	NONE		✓	C	NONE		✓	C	NONE		✓	C	NONE		✓	C	NONE	
M - 4.3.2	57	Dust Control Water	ongoing	✓	C	NONE		✓	C	NONE		✓	C	NONE		✓	C	NONE		✓	C	NONE	
M - 4.4.2	69	Offsite Mitigation Sites	status	✓	C	I-e														✓	C	I-i	
M - 4.4.2	70	Purchasing Wetland Credit	status	/				/				/				/				/			
M - 4.4.2	71	Funding-Invasive Species Eradication Program	status	/				/				/				/				/			
M - 4.6	85	Site Lighting	status	✓	C	NONE		✓	C	NONE		✓	C	NONE		✓	C	NONE		✓	C	NONE	
M - 4.7.1	86	Open Space Buffer Area	ongoing	✓	C	I-e														✓	C	NONE	
M - 4.9.3	106	Litter Minimization	ongoing	✓	C	NONE		✓	C	NONE		✓	C	NONE		✓	C	NONE		✓	C	NONE	

* C = Compliant, NC = Non-Compliant, FRN = Further Review Needed, R = Resolved

** See Appendix I for Comments

Checkmark = Condition or mitigation was monitored

/ = Yearly or non-ongoing monitoring frequency

Sunshine Canyon Landfill Mitigation Monitoring Summary - City 01-19-2012 through 03-29-2012)

Reference #	Mitigation #	City Mitigation Measures and Conditions Monitored by Discipline	Monitoring Frequency	1/19/2012	Status*	Further Review Needed/Comments**	Resolved*	2/8/2012	Status*	Further Review Needed/Comments**	Resolved*	2/29/2012	Status*	Further Review Needed/Comments**	Resolved*	3/14/2012	Status*	Further Review Needed/Comments**	Resolved*	3/29/2012	Status*	Further Review Needed/Comments**	Resolved*
M - 4.9.3	107	Litter/Debris Containment	ongoing	✓	C	NONE		✓	C	NONE		✓	C	NONE		✓	C	NONE		✓	C	NONE	
M - 4.9.3	108	Vehicle Tarping Requirements	ongoing	✓	C	NONE		✓	C	NONE		✓	C	NONE		✓	C	NONE		✓	C	NONE	
M - 4.9.3	109	Periodic Offsite Litter Pickup	ongoing	✓	C	NONE		✓	C	NONE		✓	C	NONE		✓	C	I-h		✓	C	I-i	
M - 4.9.3	110	Illegal Dumping Activities	ongoing	✓	C	I-e		✓	C	I-f		✓	C	I-g		✓	C	I-h		✓	C	I-i	
M - 4.9.3	111	Radio Dispatch Litter Control	ongoing	✓	C	NONE		✓	C	NONE		✓	C	NONE		✓	C	NONE		✓	C	NONE	
M - 4.9.3	112	Litter Control	ongoing	✓	C	NONE		✓	C	NONE		✓	C	NONE		✓	C	NONE		✓	C	NONE	
M - 4.9.5	127	Address Concerns of Citizens' Advisory Committee	ongoing	/				/				/				/				/			
M - 4.9.6	128	Landfill Gas/Collection System-Unsafe Methane Levels	ongoing	/				/				/				/				/			
M - 4.9.6	129	Landfill Gas/Collection System-Detection/Training	ongoing					✓	C	NONE		✓	C	NONE		✓	C	NONE		✓	C	NONE	
M - 4.9.6	130	Landfill Gas/Collection System-Risk Mitigation	ongoing					✓	C	NONE		✓	C	NONE		✓	C	NONE		✓	C	NONE	
M - 4.16.4	176	Reclaimed Water	status	/				/				/				/				/			
M - 4.16.4	177	Water Conservation	ongoing	✓	C	NONE		✓	C	NONE		✓	C	NONE		✓	C	NONE		✓	C	NONE	
Civil & Geotechnical Engineer																							
M - 4.1.1	2	Grading Outside of Conceptual Grading Plan Area	ongoing	✓	C	NONE		✓	C	NONE		✓	C	NONE		✓	C	NONE		✓	C	NONE	

* C = Compliant, NC = Non-Compliant, FRN = Further Review Needed, R = Resolved

** See Appendix I for Comments

Checkmark = Condition or mitigation was monitored

/ = Yearly or non-ongoing monitoring frequency

Sunshine Canyon Landfill Mitigation Monitoring Summary - City 01-19-2012 through 03-29-2012)

Reference #	Mitigation #	City Mitigation Measures and Conditions Monitored by Discipline	Monitoring Frequency	1/19/2012	Status*	Further Review Needed/Comments**	Resolved*	2/8/2012	Status*	Further Review Needed/Comments**	Resolved*	2/29/2012	Status*	Further Review Needed/Comments**	Resolved*	3/14/2012	Status*	Further Review Needed/Comments**	Resolved*	3/29/2012	Status*	Further Review Needed/Comments**	Resolved*
M - 4.1.1	3	Unsuitable Material Removal/Buffer Zones	ongoing	✓	N/A	NONE		✓	N/A	NONE		✓	C	NONE									
M - 4.1.1	4	Grading Outside of Landfill Footprint	ongoing	✓	C	NONE		✓	C	NONE		✓	C	NONE		✓	C	NONE		✓	C	NONE	
M - 4.1.1	5	Grading Activity Compliance	ongoing	✓	C	NONE		✓	FRN	I-f	R												
M - 4.1.2	8	Landslide Guidelines	ongoing	✓	C	I-e		✓	FRN	I-f													
M - 4.1.2	9	Soil Stabilization	ongoing	✓	C	NONE		✓	C	NONE													
M - 4.1.4	10	Landfill Design	ongoing	✓	FRN	I-e		✓	FRN	I-f	R												
M - 4.1.4	11	Earthquake Operations Checklist	upon event	✓	FRN	I-e																	
M - 4.1.5	12	Geologic Hazards - Liquefaction	ongoing	✓	FRN	I-e		✓	FRN	I-f													
M - 4.1.5	13	Design/Construction-Liquefaction	ongoing	✓	FRN	I-e		✓	FRN	I-f													
M - 4.1.5	14	Design/Construction- Containment Structures	ongoing	✓	C	I-e		✓	C	NONE													
M - 4.1.6	15	Refuse Slope Gradients	ongoing	✓	C	NONE		✓	C	NONE		✓	C	NONE		✓	C	NONE		✓	C	NONE	
M - 4.1.6	16	Cut and Fill Slope Gradients	ongoing	✓	C	NONE		✓	C	NONE		✓	C	NONE		✓	C	NONE		✓	C	NONE	
M - 4.1.6	17	Final Slope Factors of Safety	ongoing	✓	C	NONE		✓	C	NONE		✓	C	NONE									
M - 4.1.6	18	Survey Monuments	ongoing																	✓	C	I-i	
M - 4.3.2	47	Landfill Liner	ongoing	✓	N/A	I-e		✓	N/A			✓	N/A										
M - 4.3.2	48	Landfill Liner	ongoing	✓	N/A	I-e		✓	N/A			✓	N/A										
M - 4.3.2	54	Preliminary Closure/Postclosure Plan	status		N/A	/		/	N/A			/	N/A			/	N/A			/	N/A		

* C = Compliant, NC = Non-Compliant, FRN = Further Review Needed, R = Resolved

** See Appendix I for Comments

Checkmark = Condition or mitigation was monitored

/ = Yearly or non-ongoing monitoring frequency

Sunshine Canyon Landfill Mitigation Monitoring Summary - City 01-19-2012 through 03-29-2012)

Reference #	Mitigation #	City Mitigation Measures and	Monitoring Frequency	1/19/2012	Status*	Further Review Needed/Comments**	Resolved*	2/8/2012	Status*	Further Review Needed/Comments**	Resolved*	2/29/2012	Status*	Further Review Needed/Comments**	Resolved*	3/14/2012	Status*	Further Review Needed/Comments**	Resolved*	3/29/2012	Status*	Further Review Needed/Comments**	Resolved*
		Conditions Monitored by																					
		Discipline																					
M - 4.3.2	55	Landfill Design/Operation/Final Closure Monitoring	status		N/A	/		/	N/A			/	N/A			/	N/A			/	N/A		
M - 4.3.2	56	Cover Application	ongoing	✓	C	I-e		✓	C	NONE		✓	C	NONE		✓	C	NONE		✓	C	NONE	
M - 4.14.1	155	Access Roadway Grade	ongoing	✓	N/A	I-e		✓	N/A	NONE		✓	C	NONE									
M - 4.18	178	Landfill Elevation Exceedance	ongoing	✓	C	I-e		✓	N/A	NONE		✓	C	NONE		✓	C	NONE		✓	C	NONE	
Hydrologist																							
M - 4.1.4	11	Earthquake Operations Checklist	upon event	✓	N/A			✓	N/A			✓	N/A				N/A	NONE					
M - 4.3.1	36	Surface Water Infiltration Minimization	ongoing	✓	C	I-e		✓	C	I-f						✓	C	NONE					
M - 4.3.1	37	Surface Drainage Systems	ongoing	✓	C	I-e		✓	C	I-f						✓	C	I-h					
M - 4.3.1	38	Permanent/Temporary Ditches	ongoing	✓	C	NONE		✓	C	NONE		✓	C	NONE		✓	C	NONE					
M - 4.3.1	39	Drainage Protection	ongoing	✓	C	I-e		✓	C	I-f		✓	C	I-g		✓	C	NONE					
M - 4.3.1	40	SWRCB Permit Coverage	ongoing	✓	C	NONE		✓	C	NONE		✓	C	NONE		✓	WTC	I-h					
M - 4.3.1	41	Surface Water Collection System	ongoing	✓	C	NONE		✓	C	NONE		✓	C	NONE		✓	N/A						
M - 4.3.1	42	Surface Water Quality Monitoring	ongoing		N/A				N/A				N/A				N/A						
M - 4.3.1	43	Sediment Basin Maintenance	ongoing	✓	FRN	I-e		✓	FRN	I-f						✓	FRN	I-h					
M - 4.3.1	44	Final Landfill Cover	ongoing	✓	N/A	I-e			N/A			✓	N/A				N/A						

* C = Compliant, NC = Non-Compliant, FRN = Further Review Needed, R = Resolved

** See Appendix I for Comments

Checkmark = Condition or mitigation was monitored

/ = Yearly or non-ongoing monitoring frequency

Sunshine Canyon Landfill Mitigation Monitoring Summary - City 01-19-2012 through 03-29-2012)

Reference #	Mitigation #	City Mitigation Measures and Conditions Monitored by Discipline	Monitoring Frequency	1/19/2012	Status*	Further Review Needed/Comments**	Resolved*	2/8/2012	Status*	Further Review Needed/Comments**	Resolved*	2/29/2012	Status*	Further Review Needed/Comments**	Resolved*	3/14/2012	Status*	Further Review Needed/Comments**	Resolved*	3/29/2012	Status*	Further Review Needed/Comments**	Resolved*
M - 4.3.1	45	Erosion Control Plan	ongoing	✓	FRN	I-e		✓	FRN	I-f		✓	FRN	I-g		✓	FRN	I-h					
M - 4.3.1	46	Preventive Maintenance Program	ongoing	✓	C	I-e		✓	C	I-f		✓	C	I-g		✓	C	I-h					
M - 4.3.2	49	Interception of Groundwater Seepage	ongoing		N/A				N/A				N/A				N/A						
M - 4.3.2	50	LCRS/Leachate Monitoring	ongoing		N/A				N/A				N/A				N/A						
M - 4.3.2	51	LCRS Monitoring	ongoing		N/A				N/A				N/A				N/A						
Biologist																							
M - 4.1.1	6	Slope Erosion Control	ongoing																				
M - 4.2.11	23	Revegetation/Excavation	ongoing	✓	FRN	I-e						✓	FRN	I-g									
M - 4.2.12		Temporary Vegetation Cover	ongoing	✓	FRN	I-e						✓	FRN	I-g									
M - 4.4.1	60	Coastal Sage Scrub Mitigation Plan	ongoing									✓	FRN	I-g									
M - 4.4.1	61	Coastal Sage Scrub Seeding	ongoing																				
M - 4.4.1	62	Mariposa Lily Mitigation Plan	ongoing																				
M - 4.4.1	63	San Diego Horned Lizard Mitigation	ongoing																				
M - 4.4.1	64	California Gnatcatcher Surveys	ongoing	/				/				/											
M - 4.4.1	65	Least Bell's Vireo Surveys	ongoing	/				/				/											

* C = Compliant, NC = Non-Compliant, FRN = Further Review Needed, R = Resolved

** See Appendix I for Comments

Checkmark = Condition or mitigation was monitored

/ = Yearly or non-ongoing monitoring frequency

Sunshine Canyon Landfill Mitigation Monitoring Summary - City 01-19-2012 through 03-29-2012)

Reference #	Mitigation #	City Mitigation Measures and Conditions Monitored by Discipline	Monitoring Frequency	1/19/2012	Status*	Further Review Needed/Comments**	Resolved*	2/8/2012	Status*	Further Review Needed/Comments**	Resolved*	2/29/2012	Status*	Further Review Needed/Comments**	Resolved*	3/14/2012	Status*	Further Review Needed/Comments**	Resolved*	3/29/2012	Status*	Further Review Needed/Comments**	Resolved*
M - 4.4.1	66	Western Burrowing Owl Surveys	ongoing	/				/				/											
M - 4.4.1	67	Migratory Bird Treaty Act	ongoing	/				/				/											
M - 4.4.1	68	Raptor Nests Habitat	ongoing	/				/				/											
M - 4.4.3	72	Native Tree Mitigation	ongoing	✓	C	I-e						✓	C	I-g									
M - 4.4.3	73	Nonnative Tree Mitigation	status									✓	C	NONE									
M - 4.4.3	74	Mitigation Tree Planting	ongoing	✓	C	NONE		✓	C	NONE		✓	C	NONE									
M - 4.4.3	75	Tree Planting Mitigation Site Prep	ongoing	✓	C	NONE		✓	C	NONE		✓	C	NONE									
M - 4.4.3	76	Poultry Wire Screen	ongoing	✓	C	NONE		✓	C	NONE		✓	C	NONE									
M - 4.4.3	77	Backfill Material	ongoing	✓	C	NONE		✓	C	NONE		✓	C	NONE									
M - 4.4.3	78	Tree Planting Procedure	ongoing	✓	C	NONE		✓	C	NONE		✓	C	NONE									
M - 4.4.3	79	Tree Area Mulching	ongoing		C	NONE		✓	C	NONE		✓	C	NONE									
M - 4.4.3	80	Tree Irrigation/Fertilization	ongoing																				
M - 4.4.3	81	Irrigation System	ongoing	✓	C	NONE																	
M - 4.4.3	82	Annual Tree Monitoring Report	annually																				
M - 4.9.2	96	Vector Activity Monitoring	ongoing	✓	C	NONE		✓	C	NONE		✓	C	NONE									
M - 4.9.2	97	Vector Elimination	ongoing	✓	C	NONE		✓	C	NONE		✓	C	NONE									
M - 4.9.2	98	Fly Control	ongoing	✓	C	NONE		✓	C	NONE		✓	C	NONE									

* C = Compliant, NC = Non-Compliant, FRN = Further Review Needed, R = Resolved

** See Appendix I for Comments

Checkmark = Condition or mitigation was monitored

/ = Yearly or non-ongoing monitoring frequency

Sunshine Canyon Landfill Mitigation Monitoring Summary - City 01-19-2012 through 03-29-2012)

Reference #	Mitigation #	City Mitigation Measures and Conditions Monitored by Discipline	Monitoring Frequency	1/19/2012	Status*	Further Review Needed/Comments**	Resolved*	2/8/2012	Status*	Further Review Needed/Comments**	Resolved*	2/29/2012	Status*	Further Review Needed/Comments**	Resolved*	3/14/2012	Status*	Further Review Needed/Comments**	Resolved*	3/29/2012	Status*	Further Review Needed/Comments**	Resolved*
M - 4.9.2	99	Rodent Control	ongoing	✓	C	NONE		✓	C	NONE		✓	C	NONE									
M - 4.9.2	100	Operational Vector-Limiting Activity	ongoing	✓	C	NONE		✓	C	NONE		✓	C	NONE									
M - 4.9.2	101	Equipment Cleanliness/Maintenance	ongoing	✓	C	NONE		✓	C	NONE		✓	C	NONE									
M - 4.9.2	102	Storage of Vector-Attracting Items	ongoing	✓	C	NONE		✓	C	NONE		✓	C	NONE									
M - 4.9.2	103	Salvaged Material Storage- Vector Control	ongoing	✓	C	NONE		✓	C	NONE		✓	C	NONE									
M - 4.9.2	104	Periodic Vector Inspections	ongoing	✓	C	NONE		✓	C	NONE		✓	C	NONE									
M - 4.9.2	105	Implementation of Vector Control Measures	ongoing																				
Air Quality & Noise Specialist																							
M - 4.2.11	19	Emissions Mitigation Measures	ongoing	✓	C	I-e		✓	C	I-f													
M - 4.2.11	19	Construction Curtailing due to Pollution	ongoing	✓	C	NONE		✓	C	NONE		✓	C	NONE						✓	C	NONE	
M - 4.2.11	20	Dust Lofting Minimization	ongoing	✓	C	NONE		✓	C	NONE		✓	C	NONE						✓	C	NONE	
M - 4.2.11	21	Wind Speed Monitoring	ongoing	✓	C	NONE		✓	C	NONE		✓	C	NONE						✓	C	NONE	
M - 4.2.11	22	Grading-Dust Reduction	ongoing	✓	C	NONE		✓	C	NONE		✓	C	NONE						✓	C	NONE	
M - 4.2.12	24	Construction Equipment Maintenance	ongoing	✓	C	I-e		✓	C	I-f													
M - 4.2.12		Construction Curtailing due to Pollution	ongoing	✓	C	NONE		✓	C	NONE		✓	C	NONE						✓	C	NONE	

* C = Compliant, NC = Non-Compliant, FRN = Further Review Needed, R = Resolved

** See Appendix I for Comments

Checkmark = Condition or mitigation was monitored

/ = Yearly or non-ongoing monitoring frequency

Sunshine Canyon Landfill Mitigation Monitoring Summary - City 01-19-2012 through 03-29-2012)

Reference #	Mitigation #	City Mitigation Measures and Conditions Monitored by Discipline	Monitoring Frequency	1/19/2012	Status*	Further Review Needed/Comments**	Resolved*	2/8/2012	Status*	Further Review Needed/Comments**	Resolved*	2/29/2012	Status*	Further Review Needed/Comments**	Resolved*	3/14/2012	Status*	Further Review Needed/Comments**	Resolved*	3/29/2012	Status*	Further Review Needed/Comments**	Resolved*
M - 4.2.12	25	Refuse Trucks-Maintenance	ongoing	✓	C	I-e		✓	C	I-f													
M - 4.2.12		Refuse Trucks-Engine	ongoing	✓	C	I-e																	
M - 4.2.12		Refuse Trucks-Fee Schedule	ongoing	/				/				/				/				/			
M - 4.2.12		Refuse Trucks-Fee Schedule Delivery Time	ongoing	/				/				/				/				/			
M - 4.2.12		Refuse Trucks-Idling	ongoing	/				/				/				/				/			
M - 4.2.12		Refuse Trucks-Emissions	ongoing	/				/				/				/				/			
M - 4.2.12	26	Truck Travel and Fugitive Dust Emissions	ongoing	✓	C	NONE		✓	FRN	I-f													
M - 4.2.12		Truck Travel and Fugitive Dust Emissions	ongoing	✓	C	NONE		✓	C	NONE													
M - 4.2.12		Truck Travel and Fugitive Dust Emissions	ongoing	✓	C	NONE																	
M - 4.2.12		Truck Travel and Fugitive Dust Emissions	ongoing	✓	C	NONE																	
M - 4.5.2	83	Landfill Hours	info	/				/				/				/				/			
M - 4.5.2	84	Landfill Equipment-Noise Reduction	ongoing	✓	C	I-e		✓	C	I-f													
Hydrology, Hazardous Waste / Risk of Upset																							
M - 4.3.2	53	Groundwater Monitoring Wells	ongoing									✓	C	NONE									
M - 4.3.2	58	Operation as Class III Landfill	ongoing	✓	C	NONE		✓	C	NONE		✓	C	NONE		✓	C	NONE		✓	C	NONE	

* C = Compliant, NC = Non-Compliant, FRN = Further Review Needed, R = Resolved

** See Appendix I for Comments

Checkmark = Condition or mitigation was monitored

/ = Yearly or non-ongoing monitoring frequency

Sunshine Canyon Landfill Mitigation Monitoring Summary - City 01-19-2012 through 03-29-2012)

Reference #	Mitigation #	City Mitigation Measures and Conditions Monitored by Discipline	Monitoring Frequency	1/19/2012	Status*	Further Review Needed/Comments**	Resolved*	2/8/2012	Status*	Further Review Needed/Comments**	Resolved*	2/29/2012	Status*	Further Review Needed/Comments**	Resolved*	3/14/2012	Status*	Further Review Needed/Comments**	Resolved*	3/29/2012	Status*	Further Review Needed/Comments**	Resolved*
M - 4.3.2	59	Underground Fuel Storage	ongoing									✓	C	I-g									
M - 4.9.1	90	Refuse Inspection Program	ongoing									✓	C	I-g									
M - 4.9.1	91	Hazardous Waste Load- Checking	status									✓	C	I-g									
M - 4.9.1	93	Hazardous Waste Detection Training	status									✓	C	NONE									
M - 4.9.1	94	Spill Response Program	status									✓	C	I-g									
M - 4.9.4	115	Safety Inspections/Checklists	ongoing									✓	C	NONE									
M - 4.9.4	118	Accident/Injury reports, Inspections	status									✓	C	I-g									
M - 4.9.4	121	Fire Prevention Plan	ongoing	✓	C	I-e						✓	C	I-g									
M - 4.9.4	123	Personal Protective Equipment	ongoing									✓	C	NONE									
M - 4.9.4	125	Site Access/Fencing	ongoing									✓	C	NONE						✓	FRN	I-i	
M - 4.14.1	147	Fire Response Capabilities	ongoing									✓	C	I-g									
M - 4.14.1	148	Hydrant Installation	ongoing	✓	C	I-e						✓	C	I-g									
Archaeologist																							
M - 4.19.1	183	Archaeological Resurvey	ongoing		NA				NA				NA				NA						
M - 4.19.1	184	Onsite Archaeologist	ongoing		NA				NA				NA				NA						

* C = Compliant, NC = Non-Compliant, FRN = Further Review Needed, R = Resolved

** See Appendix I for Comments

Checkmark = Condition or mitigation was monitored

/ = Yearly or non-ongoing monitoring frequency

Sunshine Canyon Landfill Mitigation Monitoring Summary - City 01-19-2012 through 03-29-2012)

Reference #	Mitigation #	City Mitigation Measures and Conditions Monitored by Discipline	Monitoring Frequency	1/19/2012	Status*	Further Review Needed/Comments**	Resolved*	2/8/2012	Status*	Further Review Needed/Comments**	Resolved*	2/29/2012	Status*	Further Review Needed/Comments**	Resolved*	3/14/2012	Status*	Further Review Needed/Comments**	Resolved*	3/29/2012	Status*	Further Review Needed/Comments**	Resolved*
M - 4.19.1	185	Archaeological Resources	ongoing		NA				NA				NA				NA						
M - 4.19.1	186	Archaeological Resources	ongoing		NA				NA				NA				NA						
Paleontologist																							
M - 4.19.2	187	Paleontological Resources Resurvey	ongoing		NA				NA				NA				NA			✓	C	I-i	
M - 4.19.2	188	Paleontological Resources Excavation	ongoing		NA				NA				NA				NA						
M - 4.19.2	189	Paleontological Resources Training	ongoing		NA				NA				NA				NA						
M - 4.19.2	190	Paleontological Resources Recovery	ongoing		NA				NA				NA				NA						
M - 4.19.2	191	Paleontological Resources Inspection	ongoing		NA				NA				NA				NA						
Potential Tasks																							

* C = Compliant, NC = Non-Compliant, FRN = Further Review Needed, R = Resolved

** See Appendix I for Comments

Checkmark = Condition or mitigation was monitored

/ = Yearly or non-ongoing monitoring frequency

Sunshine Canyon Landfill Mitigation Monitoring Summary - City 01-19-2012 through 03-29-2012)

Reference #	Mitigation #	City Mitigation Measures and Conditions Monitored by Discipline	Monitoring Frequency	1/19/2012	Status*	Further Review Needed/Comments**	Resolved*	2/8/2012	Status*	Further Review Needed/Comments**	Resolved*	2/29/2012	Status*	Further Review Needed/Comments**	Resolved*	3/14/2012	Status*	Further Review Needed/Comments**	Resolved*	3/29/2012	Status*	Further Review Needed/Comments**	Resolved*
Q - A.6.																							
Q - A.6.																							
Q - A.7.																							

* C = Compliant, NC = Non-Compliant, FRN = Further Review Needed, R = Resolved

** See Appendix I for Comments

Checkmark = Condition or mitigation was monitored

/ = Yearly or non-ongoing monitoring frequency

Sunshine Canyon Landfill Mitigation Monitoring Summary - City 01-19-2012 through 03-29-2012)

Reference #	Mitigation #	City Mitigation Measures and Conditions Monitored by Discipline	Monitoring Frequency	1/19/2012	Status*	Further Review Needed/Comments**	Resolved*	2/8/2012	Status*	Further Review Needed/Comments**	Resolved*	2/29/2012	Status*	Further Review Needed/Comments**	Resolved*	3/14/2012	Status*	Further Review Needed/Comments**	Resolved*	3/29/2012	Status*	Further Review Needed/Comments**	Resolved*
Q - A.7.																							

* C = Compliant, NC = Non-Compliant, FRN = Further Review Needed, R = Resolved

** See Appendix I for Comments

Checkmark = Condition or mitigation was monitored

/ = Yearly or non-ongoing monitoring frequency

Sunshine Canyon Landfill Mitigation Monitoring Summary - City 01-19-2012 through 03-29-2012)

Reference #	Mitigation #	City Mitigation Measures and Conditions Monitored by Discipline	Monitoring Frequency	1/19/2012	Status*	Further Review Needed/Comments**	Resolved*	2/8/2012	Status*	Further Review Needed/Comments**	Resolved*	2/29/2012	Status*	Further Review Needed/Comments**	Resolved*	3/14/2012	Status*	Further Review Needed/Comments**	Resolved*	3/29/2012	Status*	Further Review Needed/Comments**	Resolved*
Q - A.9.a.																							

* C = Compliant, NC = Non-Compliant, FRN = Further Review Needed, R = Resolved

** See Appendix I for Comments

Checkmark = Condition or mitigation was monitored

/ = Yearly or non-ongoing monitoring frequency

Sunshine Canyon Landfill Mitigation Monitoring Summary - County (12-05-2011 through 12-21-2011)

Reference #	Mitigation #	County Mitigation Measures and Conditions Monitored by Discipline	Monitoring Frequency	12/5/2011	Status*	Further Review Needed/Comments**	Resolved*	12/21/2011	Status*	Further Review Needed/Comments**	Resolved*							
Project Manager																		
Amendment 45.N - 1	45N	Daily Cover Materials	ongoing	✓	C	NONE		✓	C	NONE								
Amendment 45.N - 3	45N	Daily Cover Procedure	ongoing	✓	C	NONE		✓	C	NONE								
Amendment 45.N - 4.a	45N	Order for Abatement Status	ongoing	/				/										
Amendment 45.N - 4.c	45N	Odor Patrol Program	ongoing	/				/										
Amendment 45.N - 4.d	45N	Landfill Gas Mitigation Plan	ongoing	/				/										
Amendment 45.N - 5	45N	Dust and Odor Reports	ongoing	/				/										
Combined Site & Bridge Area -20.A	20.A	Joint Powers Authority	info	/				/										
Combined Site & Bridge Area -20.F	20.F	Mitigation Reporting and Monitoring Program Amendment	status	/				/										
Landfill Capacity - 27	27	Tipping Fees for Partial Loads/Peak Hours	status	✓	C	I-c		✓	C	I-d								
Grading & Drainage-41.A -.D	41A-D	Water Conservation	status	✓	C	NONE		✓	C	NONE								
Revegetation - 44.F	44.F	Revegetation	status	✓	C	NONE		✓	C	NONE								
Fugitive Dust - 45.B	45.B	Working Face Areas	ongoing	✓	C	NONE		✓	C	NONE								
Fugitive Dust - 45.F	45.F	Inactive Areas Monitoring	ongoing	✓	C	NONE		✓	C	NONE								
Fugitive Dust - 45.I	45.I	Cleaning of Roads	ongoing	✓	C	NONE		✓	C	NONE								
Litter Control - 46.A - .D	46A-D	Litter Control Program	ongoing	✓	C	NONE		✓	C	NONE								
Gas - 52	52	Landfill Gas Collection System	ongoing	✓	C	NONE		✓	C	NONE								

* C = Compliant, NC = Non-Compliant, FRN = Further Review Needed, R = Resolved

** See Appendix I for Comments

Checkmark = Condition or mitigation was monitored

/ = Yearly or non-ongoing monitoring frequency

Sunshine Canyon Landfill Mitigation Monitoring Summary - County (12-05-2011 through 12-21-2011)

Reference #	Mitigation #	County Mitigation Measures and Conditions Monitored by Discipline	Monitoring Frequency	12/5/2011	Status*	Further Review Needed/Comments**	Resolved*	12/21/2011	Status*	Further Review Needed/Comments**	Resolved*						
Traffic - 57	57	Traffic Improvements	status	✓	C	NONE		✓	FRN	I-d							
Traffic - 60	60	Street Light Installation	status	/				/									
Traffic - 61	61	Traffic Minimization	ongoing	✓		NONE		✓		NONE							
Permittee Fees - 64 - 72	64- 72	Permittee Fees	info	/				/									
Permittee Fees - 69	69	Permittee Fees-Contributions	info	/				/									
Permittee Fees - 70	70	Permittee Fees	info	/				/									
Permittee Fees - 72	72	Permittee Fees	info	/				/									
Alternative Fuel Vehicles - 77.A	77.A	Alternative Fuel Vehicles-Light Duty	status	✓	C	NONE											
Alternative Fuel Vehicles - 77.B	77.B	Alternative Fuel Vehicles- Refuse/Collection Trucks	status	✓	C	I-c											
Alternative Fuel Vehicles - 77.C	77.C	Alternative Fuel Vehicles-Report	status	✓	C	I-c											
Alternative Fuel Vehicles - 77.D	77.D	Alternative Fuel Vehicles-heavy- duty, alternative fuel off-road	status	✓	C	I-c											
Alternative Fuel Vehicles - 77.E	77.E	Alternative Fuel Vehicles-Non- diesel Requirements	status	✓	C	I-c											
Alternative Fuel Vehicles - 77.F	77.F	Alternative Fuel Vehicles-Non- diesel Truck Trip Requirements	status	✓	C	I-c											
Alternative Fuel Vehicles - 77.G	77. G	Alternative Fuel Vehicles-Clean Fuel Demo Program	status	✓	C	I-c											
Alternative Fuel Vehicles - 77.H	77.H	Alternative Fuel Vehicles- Compliance Evaluation	status	✓	C	I-c											
Air Quality Monitoring - 81	81	Air Quality Monitoring-Testing	ongoing	/				/									
		Air Quality Monitoring-Testing		/				/									
IMP - Part I..A	IMP 1	Air Quality Monitoring-Testing	ongoing	/				/									
		Air Quality Monitoring-Testing		/				/									

* C = Compliant, NC = Non-Compliant, FRN = Further Review Needed, R = Resolved

** See Appendix I for Comments

Checkmark = Condition or mitigation was monitored

/ = Yearly or non-ongoing monitoring frequency

Sunshine Canyon Landfill Mitigation Monitoring Summary - County (12-05-2011 through 12-21-2011)

Reference #	Mitigation #	County Mitigation Measures and Conditions Monitored by Discipline	Monitoring Frequency	12/5/2011	Status*	Further Review Needed/Comments**	Resolved*	12/21/2011	Status*	Further Review Needed/Comments**	Resolved*							
IMP - Part VI	IMP 6	Air Quality Monitoring-Testing	ongoing	/				/										
MMRS-12/01/06		Mitigation Monitoring and Reporting Summary	info	/				/										
		Permits																
Geology - 1.15		Permittee's On-site Solid Waste Recovery and Recycling Program	status	/				/										
Surface Water - 2.09		SWRCB Permit Coverage	ongoing	✓	C	NONE		/										
Surface Water - 2.15		Surface Water Preventive Maintenance Program	ongoing	✓	C	NONE		✓	FRN	I-d								
Groundwater - 3.13		Groundwater-LFG Migration Mitigation	ongoing	✓	C	NONE		/										
Groundwater - 3.14		Groundwater-Monitoring Wells	ongoing	/				/										
BIOTA – 4.05		Annual Fee Submission for SEA Studies	status	/	NA			/	NA									
BIOTA – 4.06		Buffer Zone Maintenance as Nature Preserve	ongoing	✓	C	NONE		✓	C	NONE								
BIOTA – 4.07		Buffer Zone Maintenance- Vegetation	ongoing	✓	C	NONE		✓	C	NONE								
BIOTA – 4.08		Ridgeline Maintenance-Remain Undisturbed	ongoing	✓	C	NONE		✓	C	NONE								
BIOTA – 4.47		Cleaning of Equipment	ongoing															
BIOTA – 4.48		Monitoring of Vector-Attracting Items	ongoing	✓	C	NONE		✓	C	NONE								
BIOTA – 4.49		Salvaged Material Storage-Vector Control	ongoing	✓	C	NONE		✓	C	NONE								
BIOTA – 4.50		Vector Activity Monitoring	ongoing	✓	C	NONE		✓	C	NONE								
Air Quality - 6.03		Dust Emission Minimization	ongoing	✓	FRN	I-c		✓	FRN	I-d								
Air Quality - 6.04		Usage of Cut Material for Cover	ongoing	✓	C	NONE		✓	C	NONE								
Air Quality - 6.05		Operations in Accordance with SCAQMD/DOPW Requirements	info	/				/										

* C = Compliant, NC = Non-Compliant, FRN = Further Review Needed, R = Resolved

** See Appendix I for Comments

Checkmark = Condition or mitigation was monitored

/ = Yearly or non-ongoing monitoring frequency

Sunshine Canyon Landfill Mitigation Monitoring Summary - County (12-05-2011 through 12-21-2011)

Reference #	Mitigation #	County Mitigation Measures and Conditions Monitored by Discipline	Monitoring Frequency	12/5/2011	Status*	Further Review Needed/Comments**	Resolved*	12/21/2011	Status*	Further Review Needed/Comments**	Resolved*							
Air Quality - 6.06		Landfill Gas Control/Extraction System/Monitoring	ongoing	/				/										
Air Quality - 6.07		Flaring Systems	info	/				/										
Air Quality - 6.08		Management of Truck Arrivals	ongoing	/				/										
Air Quality - 6.10		Refuse Truck Mitigation	status															
Air Quality - 6.11		Light Duty Alternative Fuel Vehicles	status	/				/										
Air Quality - 6.11		Alternative Fuel Refuse Collection/Transfer Trucks	status	✓	C	I-c												
Air Quality - 6.11		Alternative Fuel Vehicle Report Submission	status	✓	C	I-c												
Air Quality - 6.11		Heavy-duty, Alternative Fuel Off-Road Equipment Pilot Program	status	✓	C	I-c												
Air Quality - 6.11		Non-Diesel, Alternative Fuel Vehicles-Transfer/Collection Trucks	status	✓	C	I-c												
Air Quality - 6.11		Non-Diesel, Alternative Fuel VehiclesTruck Trips	status	✓	C	I-c												
Air Quality - 6.11		Clean Fuel Demonstration Program	status	✓	C	I-c												
Air Quality - 6.11		Compliance Evaluation	status	✓	C	I-c												
Odor/Landfill Gas - 7.01		Landfill Gas Escape Prevention	ongoing	/				/										
Odor/Landfill Gas - 7.02		Landfill Gas Collection System	ongoing	/				/										
Odor/Landfill Gas - 7.04		Gas Collection/Flare System Risk Mitigation	ongoing	✓	C	NONE		✓	C	NONE								
Odor/Landfill Gas - 7.05		Wellhead Awareness	status															
Odor/Landfill Gas - 7.06		Odor Control Measures	ongoing	/				/										
Odor/Landfill Gas - 7.07		Gas Recovery and Sale	status															
Traffic/Circulation - 8.03		Street Light Installation	status	/				/										

* C = Compliant, NC = Non-Compliant, FRN = Further Review Needed, R = Resolved

** See Appendix I for Comments

Checkmark = Condition or mitigation was monitored

/ = Yearly or non-ongoing monitoring frequency

Sunshine Canyon Landfill Mitigation Monitoring Summary - County (12-05-2011 through 12-21-2011)

Reference #	Mitigation #	County Mitigation Measures and Conditions Monitored by Discipline	Monitoring Frequency	12/5/2011	Status*	Further Review Needed/Comments**	Resolved*	12/21/2011	Status*	Further Review Needed/Comments**	Resolved*							
Traffic/Circulation - 8.04		Truck Traffic Minimization	status	✓	C	NONE		✓	C	NONE								
Traffic/Circulation - 8.08		Tipping Fees for Partial Loads/Peak Hours	status	✓	C	I-c		✓	C	I-d								
Traffic/Circulation - 8.10		Nighttime Landfill Operations Feasibility	status	/				/										
Traffic/Circulation - 8.11		Parking Management along San Fernando Road	status	/				/										
Traffic/Circulation - 8.13		Adequate Queuing	status	/				/										
Visual - 10.03		Landfill Flare Locations	status	/				/										
Visual - 10.04		Confinement of Excavation Cover Material	status	✓	C	NONE		✓	C	NONE								
Visual - 10.05		Lighting Requirements	status	✓	C	NONE		✓	C	NONE								
Visual - 10.11		Litter Control Program	ongoing	✓	C	NONE		✓	C	NONE								
Visual - 10.11		Solid Waste Load Procedures- Improperly Covered/Contained	ongoing	✓	C	NONE		✓	C	NONE								
Visual - 10.11		Debris Removal at Entrance	ongoing	✓	C	NONE		✓	C	NONE								
Visual - 10.11		Litter Control-Fencing	ongoing	✓	C	NONE		✓	C	NONE								
Visual - 10.11		Periodic Litter Pickup	ongoing	✓	C	NONE		✓	C	NONE								
Visual - 10.11		Litter Control-Additional Measures	ongoing	✓	C	NONE		✓	C	NONE								
Visual - 10.12		Discharge Control/Litter Recovery	status	✓	C	NONE		✓	C	NONE								
Water Conserv. - 11.01		Water Conservation	ongoing	✓	C	NONE		✓	C	NONE								
Recycling - 14.01		On-site Waste Diversion/Recycling	ongoing	✓	C	NONE		✓	C	NONE								
Recycling - 14.03		Tonnage Disposal Determination	info	/				/										
Recycling - 14.04		Recycling-Variou Tasks	info	/				/										

* C = Compliant, NC = Non-Compliant, FRN = Further Review Needed, R = Resolved

** See Appendix I for Comments

Checkmark = Condition or mitigation was monitored

/ = Yearly or non-ongoing monitoring frequency

Sunshine Canyon Landfill Mitigation Monitoring Summary - County (12-05-2011 through 12-21-2011)

Reference #	Mitigation #	County Mitigation Measures and Conditions Monitored by Discipline	Monitoring Frequency	12/5/2011	Status*	Further Review Needed/Comments**	Resolved*	12/21/2011	Status*	Further Review Needed/Comments**	Resolved*							
		Clean Dirt Procedures		✓	C	NONE		✓	C	NONE								
Site - 15.11		Reclaimed Water Utilization	status	/				/										
Site - 15.12		Water Conservation Measures	ongoing	✓	C	NONE		✓	C	NONE								
Admin Rpts/Pgms - 17.4		Operation Compliance	info	/				/										
Admin Rpts/Pgms - 17.10		Fill Sequencing Plans	status															
Admin Rpts/Pgms - 17.15		Quarterly Newsletter	status															
Landfill Operation - 18.7		Graffiti Removal/Deterrent Plan	ongoing	✓	C	NONE		✓	C	NONE								
Civil & Geotechnical Engineer																		
Revegetation - 44.C	44.C	Cut Slope Requirements	ongoing															
Geology - 1.01		Survey Monument Locations	ongoing	✓	C	NONE		✓	C	I-d								
Geology - 1.02		Seismic Design	ongoing	✓	C	I-c												
Geology - 1.03		Maximum Refuse Slope Gradients	ongoing	✓	C	NONE		✓	C	NONE								
Geology - 1.04		Maximum Refuse Slope Gradients	ongoing	✓	C	NONE		✓	C	NONE								
Geology - 1.05		Unsuitable Material Procedures	ongoing	✓	C	I-c												
Geology - 1.06		Grading Activities Procedures	ongoing	✓	C	NONE		✓	C	NONE								

* C = Compliant, NC = Non-Compliant, FRN = Further Review Needed, R = Resolved

** See Appendix I for Comments

Checkmark = Condition or mitigation was monitored

/ = Yearly or non-ongoing monitoring frequency

Sunshine Canyon Landfill Mitigation Monitoring Summary - County (12-05-2011 through 12-21-2011)

Reference #	Mitigation #	County Mitigation Measures and Conditions Monitored by Discipline	Monitoring Frequency	12/5/2011	Status*	Further Review Needed/Comments**	Resolved*	12/21/2011	Status*	Further Review Needed/Comments**	Resolved*							
Geology - 1.07		Grading Activities Procedures	ongoing	✓	C	I-c												
Geology - 1.09		Outer Perimeter Ridgeline Requirements	info	/				/										
Geology - 1.12		Soil Stabilization	ongoing	✓	C	NONE		✓		NONE								
Geology - 1.16		Checklists/Surveys Following Earthquake	upon event		NA				NA									
Geology - 1.18		Alluvium-Removal/Replacement	ongoing	✓	NA	I-c			NA									
Geology - 1.19		Landfill Design/Construction	ongoing	✓	NA	I-c			NA									
Geology - 1.20		Landfill Design/Construction- Foundations	ongoing	✓	NA	I-c			NA									
Surface Water - 2.03		Surface Drainage Control Facilities	ongoing	✓	C	I-c												
Surface Water - 2.05		Underdrain Requirements	ongoing		NA				NA									
Surface Water - 2.06		Final Cover for Surface Water Runoff Control	ongoing		NA				NA									
Groundwater - 3.02		Liner System Requirements	ongoing	✓	NA	I-c			NA									
Groundwater - 3.04		Onsite Inspector for Liner Installation	ongoing	✓	NA	I-c			NA									
Groundwater - 3.09		Alluvium Removal	ongoing	✓	NA	I-c			NA									
Visual – 10.01		Landfill Elevations	ongoing		NA				NA									
Visual – 10.02		Final Fill Elevations	ongoing		NA				NA									
Hydrologist																		
Grading & Drainage - 38	38	Installation of Drainage Structures	ongoing															

* C = Compliant, NC = Non-Compliant, FRN = Further Review Needed, R = Resolved

** See Appendix I for Comments

Checkmark = Condition or mitigation was monitored

/ = Yearly or non-ongoing monitoring frequency

Sunshine Canyon Landfill Mitigation Monitoring Summary - County (12-05-2011 through 12-21-2011)

Reference #	Mitigation #	County Mitigation Measures and Conditions Monitored by Discipline	Monitoring Frequency	12/5/2011	Status*	Further Review Needed/Comments**	Resolved*	12/21/2011	Status*	Further Review Needed/Comments**	Resolved*							
Geology - 1.17		Landfill Design/Construction-Seismic	ongoing		NA													
Surface Water - 2.01		Surface Water Runoff Interception	ongoing	✓	C	NONE												
Surface Water - 2.02		Surface Water Runoff Collection	ongoing	✓	C	NONE												
Surface Water - 2.03		Surface Drainage Control-Maintenance	ongoing	✓	C	NONE												
Surface Water - 2-04		Sedimentation Basin Capabilities	ongoing	✓	C	NONE												
Surface Water - 2.05		Underdrain Placement	ongoing	✓	C	NONE												
Surface Water - 2.07		Drainage Control System Design Approval	ongoing	✓	C	NONE												
Surface Water - 2.08		Surface Water Runoff-Drainage System	ongoing	✓	C	NONE												
Surface Water - 2.10		Surface Water Collection System-Monitoring	ongoing	✓	FRN	I-c												
Surface Water - 2.11		Surface Water Quality-Collection/Monitoring	ongoing	✓	C	NONE												
Surface Water - 2.12		Permanent/Temporary Drainage Facilities	ongoing	✓	C	NONE												
Surface Water - 2.13		Permanent/Temporary Drainage Facilities	ongoing	✓	C	NONE												
Surface Water - 2.14		Erosion Control Plan	ongoing	✓	C	I-c												
Groundwater - 3.03		Interception of Groundwater Seepage	ongoing		NA				NA									
Groundwater - 3.06		Monitoring Wells	ongoing		NA				NA									
Biologist																		

* C = Compliant, NC = Non-Compliant, FRN = Further Review Needed, R = Resolved

** See Appendix I for Comments

Checkmark = Condition or mitigation was monitored

/ = Yearly or non-ongoing monitoring frequency

Sunshine Canyon Landfill Mitigation Monitoring Summary - County (12-05-2011 through 12-21-2011)

Reference #	Mitigation #	County Mitigation Measures and Conditions Monitored by Discipline	Monitoring Frequency	12/5/2011	Status*	Further Review Needed/Comments**	Resolved*	12/21/2011	Status*	Further Review Needed/Comments**	Resolved*						
Revegetation - 44	44	Revegetation/Cover Requirements	ongoing														
Revegetation - 44.A	44.A	Temporary Hydroseed Vegetation	ongoing														
Revegetation - 44.B	44.B	Interim Reclamation/Revegetation Plan-Sold Waste	ongoing														
Revegetation - 44.D	44.D	Final Fill Slope Requirements	ongoing														
Revegetation - 44.E	44.E		ongoing														
Geology - 1.13		Drainage Plan Approval	ongoing														
Geology - 1.14		Personnel Retention for Monitoring Soil Erosion	ongoing														
Groundwater - 3.11		Irrigation/Revegetation Management-Personnel Retention	ongoing														
BIOTA - 4.10		Oak Tree Permit	ongoing	/				/									
BIOTA - 4.11		Oak Tree Mitigation Plan	ongoing	✓	C	NONE		✓	C	NONE							
BIOTA - 4.13		Oak Tree Mitigation Counting	ongoing	✓	C	NONE		✓	C	NONE							
BIOTA - 4.20		Poultry Wire Screen	ongoing	✓	C	NONE		✓	C	NONE							
BIOTA - 4.24		Drip Irrigation	ongoing	✓	C	NONE		✓	C	NONE							
BIOTA - 4.27		Coastal Sage Scrub Mitigation Plan	ongoing														
BIOTA - 4.28		Coastal Sage Scrub Seeding	ongoing														
BIOTA - 4.29		San Diego Horned Lizard Mitigation	ongoing														
BIOTA - 4.30		California Gnatcatcher Surveys	ongoing	/				/									
BIOTA - 4.31		Least Bell's Vireo Surveys	ongoing	/				/									
BIOTA - 4.32		Western Burrowing Owl Surveys	ongoing	/				/									

* C = Compliant, NC = Non-Compliant, FRN = Further Review Needed, R = Resolved

** See Appendix I for Comments

Checkmark = Condition or mitigation was monitored

/ = Yearly or non-ongoing monitoring frequency

Sunshine Canyon Landfill Mitigation Monitoring Summary - County (12-05-2011 through 12-21-2011)

Reference #	Mitigation #	County Mitigation Measures and Conditions Monitored by Discipline	Monitoring Frequency	12/5/2011	Status*	Further Review Needed/Comments**	Resolved*	12/21/2011	Status*	Further Review Needed/Comments**	Resolved*						
BIOTA – 4.33		Migratory Bird Treaty Act	ongoing	/				/									
BIOTA – 4.34		Raptor Nests Habitat	ongoing	/				/									
BIOTA – 4.36		Personnel Retention for Monitoring Revegetation Plan	ongoing														
BIOTA – 4.37		Personnel Retention for Monitoring Revegetation Plan, Onsite Plants	status														
BIOTA – 4.38		Green Waste Material	ongoing														
BIOTA – 4.39		Revegetation of Slopes/Fill Areas	ongoing														
BIOTA – 4.41		Revegetation Plan-Replacement Cover	ongoing														
BIOTA – 4.42		Interim Vegetation	ongoing														
BIOTA – 4.43		Replacement Riparian Habitat	status														
Air Quality - 6.02		Dust Control	ongoing														
Visual – 10.06		Upper Ridge Planting/Revegetation	ongoing														
Visual – 10.07		Tree Planting Around Perimeter	ongoing														
Visual – 10.08		Cover/Revegetation Requirements	ongoing														
Visual – 10.08		Solid Waste Disposal Procedures	ongoing														
Visual – 10.08		Final Cut Slope Steepness	ongoing														
Visual – 10.08		Final Fill Slopes- Reclamation/Revegetation	status														
Visual – 10.08		Revegetation Requirements	status														
Visual – 10.09		Final Cover Composition Requirements	ongoing														
Visual – 10.10		Buffer Zone Maintenance	ongoing														
Water Conservation -		Plant Species	ongoing														

* C = Compliant, NC = Non-Compliant, FRN = Further Review Needed, R = Resolved

** See Appendix I for Comments

Checkmark = Condition or mitigation was monitored

/ = Yearly or non-ongoing monitoring frequency

Sunshine Canyon Landfill Mitigation Monitoring Summary - County (12-05-2011 through 12-21-2011)

Reference #	Mitigation #	County Mitigation Measures and Conditions Monitored by Discipline	Monitoring Frequency	12/5/2011	Status*	Further Review Needed/Comments**	Resolved*	12/21/2011	Status*	Further Review Needed/Comments**	Resolved*							
Fire Service - 12.01		Brush Clearance Measures	ongoing															
Air Quality & Noise Specialist																		
Fugitive Dust - 45.F	45.F	Fugitive Dust Monitoring	ongoing	✓	C	NONE		✓	C	NONE								
Fugitive Dust - 45.I	45.I	Paved Roads-Cleaning	ongoing	✓	C	NONE		✓	C	NONE								
Fugitive Dust - 45.N	45.N	Report Submission-Dust/Odor	every quarter	/				/										
Air Quality Monitoring - 81	81	Air Quality Monitoring-Tests	ongoing															
Air Quality – 6.01		Fugitive Dust Aversion	ongoing	✓	C	NONE		✓	C	NONE								
Air Quality – 6.01		Working Face Requirements	ongoing	✓	C	NONE		✓	C	NONE								
Air Quality – 6.01		Erosion Control-Daily Cover	ongoing	✓	C	NONE		✓	C	NONE								
Air Quality – 6.01		Soil Stockpile Requirements	ongoing	✓	C	NONE		✓	C	NONE								
Air Quality – 6.01		Active Area Fill	ongoing	✓	C	NONE		✓	C	NONE								
Air Quality – 6.01		Soil Sealant	ongoing	✓	C	NONE		✓	C	NONE								
Air Quality – 6.01		Dust Emissions-Road Maintenance	ongoing	✓	C	NONE		✓	C	NONE								
Air Quality – 6.01		Access Roads-Paving	ongoing	✓	C	NONE		✓	C	NONE								
Air Quality – 6.01		Dust Generation-Dumping	ongoing	✓	C	NONE		✓	C	NONE								

* C = Compliant, NC = Non-Compliant, FRN = Further Review Needed, R = Resolved

** See Appendix I for Comments

Checkmark = Condition or mitigation was monitored

/ = Yearly or non-ongoing monitoring frequency

Sunshine Canyon Landfill Mitigation Monitoring Summary - County (12-05-2011 through 12-21-2011)

Reference #	Mitigation #	County Mitigation Measures and Conditions Monitored by Discipline	Monitoring Frequency	12/5/2011	Status*	Further Review Needed/Comments**	Resolved*	12/21/2011	Status*	Further Review Needed/Comments**	Resolved*						
Air Quality – 6.01		Water Tanks/Piping Maintenance	ongoing	✓	C	NONE		✓	C	NONE							
Air Quality – 6.01		Wind Speed Monitoring	ongoing	✓	C	NONE		✓	C	NONE							
Air Quality – 6.01		Report Submission-Dust/Odor	every quarter	✓	C	NONE		✓	C	NONE							
Odor/Landfill Gas – 7.03		Odor/Landfill Gas Monitoring Program	ongoing	/				/									
Odor/Landfill Gas – 7.03		Landfill Surface Sampling	ongoing	/				/									
Odor/Landfill Gas – 7.03		Landfill Perimeter Air Samples	ongoing	/				/									
Odor/Landfill Gas – 7.03		Landfill Surface Monitoring	ongoing	/				/									
Odor/Landfill Gas – 7.03		LFG Collection System Monitoring	ongoing	/				/									
Noise – 9.01		Landfill Access/Operation	info	/				/									
Noise – 9.03		Landfill Equipment- Mufflers/Silencers	ongoing	✓	C	I-c		✓	C	I-d							
Admin Rpts/ Pgms 17.16		Air Quality Monitoring-Corrective Action Plan	ongoing	/				/									
Hydrology, Hazardous Waste / Risk of Upset																	
IMP - Part IV.E	IMP 4	Load Inspection-Random Manual	ongoing														
Groundwater - 3.05		Leachate Collection and Removal System	ongoing	✓	C	NONE		✓	C	NONE							
Groundwater - 3.15		Underground Diesel Fuel Storage Tanks	ongoing														

* C = Compliant, NC = Non-Compliant, FRN = Further Review Needed, R = Resolved

** See Appendix I for Comments

Checkmark = Condition or mitigation was monitored

/ = Yearly or non-ongoing monitoring frequency

Sunshine Canyon Landfill Mitigation Monitoring Summary - County (12-05-2011 through 12-21-2011)

Reference #	Mitigation #	County Mitigation Measures and Conditions Monitored by Discipline	Monitoring Frequency	12/5/2011	Status*	Further Review Needed/Comments**	Resolved*	12/21/2011	Status*	Further Review Needed/Comments**	Resolved*							
Fire Service - 12.02		On-site Fire Response Capabilities-Operating Equipment	ongoing															
Fire Service - 12.03		On-site Fire Response Capabilities-Roads/Water	ongoing															
Fire Service - 12.04		On-site Fuel Storage Tanks-Permit Issuance	ongoing															
Fire Service - 12.05		Building Limits	ongoing	✓	C	NONE		✓	C	NONE								
Fire Service - 12.06		Methane Gas Monitoring-On-site Structures	ongoing	✓	C	NONE												
Hazardous Materials – 13.02		Waste Load Checking Program	ongoing															
Hazardous Materials – 13.05		Hazardous Waste Disposal	ongoing															
Hazardous Materials – 13.10		Hazardous Waste-Procedures	ongoing															
Hazardous Materials – 13.11		Spill Response Program	ongoing															
Safety - 16.02		Injury and Illness Prevention Program	status															
Safety - 16.03		Working Conditions-Monitoring	status															
Safety - 16.04		Inspection Checklist-Work Area Exposure	status															
Safety - 16.07		Accident/Injury Reports	status															
Safety - 16.08		First-aid Kits	ongoing															
Safety - 16.10		Lockout/Blackout Procedures	status															
Safety - 16.11		Personal Protective Equipment	status															
Landfill Operation - 18.8		Prohibited Waste Procedures	ongoing															

* C = Compliant, NC = Non-Compliant, FRN = Further Review Needed, R = Resolved

** See Appendix I for Comments

Checkmark = Condition or mitigation was monitored

/ = Yearly or non-ongoing monitoring frequency

Sunshine Canyon Landfill Mitigation Monitoring Summary - County (12-05-2011 through 12-21-2011)

Reference #	Mitigation #	County Mitigation Measures and Conditions Monitored by Discipline	Monitoring Frequency	12/5/2011	Status*	Further Review Needed/Comments**	Resolved*	12/21/2011	Status*	Further Review Needed/Comments**	Resolved*							
Archaeologist																		
Ecological Significance - 62	62	Archaeological/Paleontological Identification/Conservation	ongoing		NA				NA									
IMP - Part VII.B	IMP 7	Archaeological/Paleontological Rep	ongoing		NA				NA									
Archaeological – 5.01		Archaeological Resurvey	ongoing		NA				NA									
Archaeological – 5.02		Onsite Archaeologist	ongoing		NA				NA									
Archaeological – 5.03		Onsite Paleontologist	ongoing		NA				NA									
Archaeological – 5.04		Archaeological/Paleontological Identification Instruction	ongoing		NA				NA									
Archaeological – 5.05		Archaeological Resource Curation	ongoing		NA				NA									
Paleontologist																		
Ecological Significance - 62	62	Archaeological/Paleontological - Material Identification/Conservation	ongoing		NA				NA									
IMP - Part VII.B	IMP 7	Archaeological/Paleontological- Report Submission	ongoing		NA				NA									
Potential Tasks																		

* C = Compliant, NC = Non-Compliant, FRN = Further Review Needed, R = Resolved

** See Appendix I for Comments

Checkmark = Condition or mitigation was monitored

/ = Yearly or non-ongoing monitoring frequency

Sunshine Canyon Landfill Mitigation Monitoring Summary - County (12-05-2011 through 12-21-2011)

Reference #	Mitigation #	County Mitigation Measures and Conditions Monitored by Discipline	Monitoring Frequency	12/5/2011	Status*	Further Review Needed/Comments**	Resolved*	12/21/2011	Status*	Further Review Needed/Comments**	Resolved*						
Landfill Capacity - 24	24																
Air Quality - 51	51																

* C = Compliant, NC = Non-Compliant, FRN = Further Review Needed, R = Resolved

** See Appendix I for Comments

Checkmark = Condition or mitigation was monitored

/ = Yearly or non-ongoing monitoring frequency

Sunshine Canyon Landfill Mitigation Monitoring Summary - County (01-19-2012 through 03-29-2012)

Reference #	Mitigation #	County Mitigation Measures and Conditions Monitored by Discipline	Monitoring Frequency	1/19/2012	Status*	Further Review Needed/Comments**	Resolved*	2/8/2012	Status*	Further Review Needed/Comments**	Resolved*	2/29/2012	Status*	Further Review Needed/Comments**	Resolved*	3/14/2012	Status*	Further Review Needed/Comments**	Resolved*	3/29/2012	Status*	Further Review Needed/Comments**	Resolved*
Project Manager																							
Amendment 45.N 1	45N	Daily Cover Materials	ongoing	✓	C	NONE		✓	C	NONE		✓	C	NONE		✓	C	NONE		✓	C	NONE	
Amendment 45.N 3	45N	Daily Cover Procedure	ongoing	✓	C	NONE		✓	C	NONE		✓	C	NONE		✓	C	NONE		✓	C	NONE	
Amendment 45.N 4.a	45N	Order for Abatement Status	ongoing	/				/				/				/				/			
Amendment 45.N 4.c	45N	Odor Patrol Program	ongoing	/				/				/				/				/			
Amendment 45.N 4.d	45N	Landfill Gas Mitigation Plan	ongoing	/				/				/				/				/			
Amendment 45.N 5	45N	Dust and Odor Reports	ongoing	/				/				/				/				/			
Combined Site & Bridge Area -20.A	20.A	Joint Powers Authority	info	/				/				/				/				/			
Combined Site & Bridge Area -20.F	20.F	Mitigation Reporting and Monitoring Program Amendment	status	/				/				/				/				/			
Landfill Capacity - 27	27	Tipping Fees for Partial Loads/Peak Hours	status	✓	C	I-e						✓	C	I-g						✓	C	I-i	
Grading & Drainage-41.A -D	41A- D	Water Conservation	status	✓	C	I-e																	
Revegetation - 44.F	44.F	Revegetation	status	✓	C	I-e						✓	C	I-g						✓	FRN	I-i	
Fugitive Dust - 45.B	45.B	Working Face Areas	ongoing	✓	C	NONE		✓	C	NONE		✓	C	NONE		✓	C	NONE		✓	C	NONE	
Fugitive Dust - 45.F	45.F	Inactive Areas Monitoring	ongoing	✓	C	I-e						✓	C	I-g						✓	C	I-i	
Fugitive Dust - 45.I	45.I	Cleaning of Roads	ongoing	✓	C	NONE		✓	C	NONE		✓	C	NONE		✓	C	NONE		✓	C	NONE	
Litter Control - 46.A - .D	46A- D	Litter Control Program	ongoing	✓	C	NONE		✓	C	NONE		✓	C	NONE		✓	C	NONE		✓	C	NONE	
Gas - 52	52	Landfill Gas Collection System	ongoing	✓	C	I-e						✓	C	I-g						✓	C	I-i	

* C = Compliant, NC = Non-Compliant, FRN = Further Review Needed, R = Resolved

** See Appendix I for Comments

Checkmark = Condition or mitigation was monitored

/ = Yearly or non-ongoing monitoring frequency

Sunshine Canyon Landfill Mitigation Monitoring Summary - County (01-19-2012 through 03-29-2012)

Reference #	Mitigation #	County Mitigation Measures and Conditions Monitored by Discipline	Monitoring Frequency	1/19/2012	Status*	Further Review Needed/Comments**	Resolved*	2/8/2012	Status*	Further Review Needed/Comments**	Resolved*	2/29/2012	Status*	Further Review Needed/Comments**	Resolved*	3/14/2012	Status*	Further Review Needed/Comments**	Resolved*	3/29/2012	Status*	Further Review Needed/Comments**	Resolved*
Traffic - 57	57	Traffic Improvements	status	✓	FRN	I-e						✓	C	NONE	R								
Traffic - 60	60	Street Light Installation	status	/				/				/				/				/			
Traffic - 61	61	Traffic Minimization	ongoing	✓		NONE		✓	C	NONE		✓	C	NONE		✓	C	NONE		✓	C	NONE	
Permittee Fees - 64 - 72	64- 72	Permittee Fees	info	/				/				/				/				/			
Permittee Fees - 69	69	Permittee Fees-Contributions	info	/				/				/				/				/			
Permittee Fees - 70	70	Permittee Fees	info	/				/				/				/				/			
Permittee Fees - 72	72	Permittee Fees	info	/				/				/				/				/			
Alternative Fuel Vehicles - 77.A	77.A	Alternative Fuel Vehicles-Light Duty	status					✓	C	NONE		✓	C	I-g						✓	C	NONE	
Alternative Fuel Vehicles - 77.B	77.B	Alternative Fuel Vehicles- Refuse/Collection Trucks	status									✓	FRN	I-g						✓	FRN	I-i	
Alternative Fuel Vehicles - 77.C	77.C	Alternative Fuel Vehicles-Report	status									✓	FRN	I-g						✓	FRN	I-i	
Alternative Fuel Vehicles - 77.D	77.D	Alternative Fuel Vehicles-heavy- duty, alternative fuel off-road	status									✓	FRN	I-g						✓	FRN	I-i	
Alternative Fuel Vehicles - 77.E	77.E	Alternative Fuel Vehicles-Non- diesel Requirements	status									✓	FRN	I-g						✓	FRN	I-i	
Alternative Fuel Vehicles - 77.F	77.F	Alternative Fuel Vehicles-Non- diesel Truck Trip Requirements	status									✓	FRN	I-g						✓	FRN	I-i	
Alternative Fuel Vehicles - 77.G	77. G	Alternative Fuel Vehicles-Clean Fuel Demo Program	status									✓	FRN	I-g						✓	FRN	I-i	
Alternative Fuel Vehicles - 77.H	77.H	Alternative Fuel Vehicles- Compliance Evaluation	status									✓	FRN	I-g						✓	FRN	I-i	
Air Quality Monitoring - 81	81	Air Quality Monitoring-Testing	ongoing	/				/				/				/				/			
		Air Quality Monitoring-Testing		/				/				/				/				/			
IMP - Part I..A	IMP 1	Air Quality Monitoring-Testing	ongoing	/				/				/				/				/			
		Air Quality Monitoring-Testing		/				/				/				/				/			

* C = Compliant, NC = Non-Compliant, FRN = Further Review Needed, R = Resolved

** See Appendix I for Comments

Checkmark = Condition or mitigation was monitored

/ = Yearly or non-ongoing monitoring frequency

Sunshine Canyon Landfill Mitigation Monitoring Summary - County (01-19-2012 through 03-29-2012)

Reference #	Mitigation #	County Mitigation Measures and Conditions Monitored by Discipline	Monitoring Frequency	1/19/2012	Status*	Further Review Needed/Comments**	Resolved*	2/8/2012	Status*	Further Review Needed/Comments**	Resolved*	2/29/2012	Status*	Further Review Needed/Comments**	Resolved*	3/14/2012	Status*	Further Review Needed/Comments**	Resolved*	3/29/2012	Status*	Further Review Needed/Comments**	Resolved*
IMP - Part VI	IMP 6	Air Quality Monitoring-Testing	ongoing	/				/				/				/				/			
MMRS-12/01/06		Mitigation Monitoring and Reporting Summary	info	/				/				/				/				/			
		Permits																					
Geology - 1.15		Permittee's On-site Solid Waste Recovery and Recycling Program	status	/				/				/				/				/			
Surface Water - 2.09		SWRCB Permit Coverage	ongoing	/				/				/				/				/			
Surface Water - 2.15		Surface Water Preventive Maintenance Program	ongoing	✓	FRN	I-e		✓	FRN	I-f		✓	FRN	I-g		✓	FRN	I-h		✓	FRN	I-i	
Groundwater - 3.13		Groundwater-LFG Migration Mitigation	ongoing	/				/				/				/				/			
Groundwater - 3.14		Groundwater-Monitoring Wells	ongoing	/				/				/				/				/			
BIOTA – 4.05		Annual Fee Submission for SEA Studies	status	/	NA			/	NA			/	NA			/	NA			/	NA		
BIOTA – 4.06		Buffer Zone Maintenance as Nature Preserve	ongoing	✓	C	NONE		✓	C	NONE		✓	C	NONE		✓	C	NONE		✓	C	NONE	
BIOTA – 4.07		Buffer Zone Maintenance-Vegetation	ongoing	✓	C	NONE		✓	C	NONE		✓	C	NONE		✓	C	NONE		✓	C	NONE	
BIOTA – 4.08		Ridgeline Maintenance-Remain Undisturbed	ongoing	✓	C	NONE		✓	C	NONE		✓	C	NONE		✓	C	NONE		✓	C	NONE	
BIOTA – 4.47		Cleaning of Equipment	ongoing					✓	C	NONE										✓	C	NONE	
BIOTA – 4.48		Monitoring of Vector-Attracting Items	ongoing	✓	C	NONE		✓	C	NONE		✓	C	NONE		✓	C	NONE		✓	C	NONE	
BIOTA – 4.49		Salvaged Material Storage-Vector Control	ongoing	✓	C	NONE		✓	C	NONE		✓	C	NONE		✓	C	NONE		✓	C	NONE	
BIOTA – 4.50		Vector Activity Monitoring	ongoing	✓	C	NONE		✓	C	NONE		✓	C	NONE		✓	C	NONE		✓	C	NONE	
Air Quality - 6.03		Dust Emission Minimization	ongoing	✓	FRN	I-e		✓	FRN	I-f		✓	FRN	I-g		✓	FRN	I-h		✓	FRN	I-i	
Air Quality - 6.04		Usage of Cut Material for Cover	ongoing	✓	C	NONE		✓	C	NONE		✓	C	NONE		✓	C	NONE		✓	C	NONE	

* C = Compliant, NC = Non-Compliant, FRN = Further Review Needed, R = Resolved

** See Appendix I for Comments

Checkmark = Condition or mitigation was monitored

/ = Yearly or non-ongoing monitoring frequency

Sunshine Canyon Landfill Mitigation Monitoring Summary - County (01-19-2012 through 03-29-2012)

Reference #	Mitigation #	County Mitigation Measures and Conditions Monitored by Discipline	Monitoring Frequency	1/19/2012	Status*	Further Review Needed/Comments**	Resolved*	2/8/2012	Status*	Further Review Needed/Comments**	Resolved*	2/29/2012	Status*	Further Review Needed/Comments**	Resolved*	3/14/2012	Status*	Further Review Needed/Comments**	Resolved*	3/29/2012	Status*	Further Review Needed/Comments**	Resolved*
Air Quality - 6.05		Operations in Accordance with SCAQMD/DOPW Requirements	info	/				/				/				/				/			
Air Quality - 6.06		Landfill Gas Control/Extraction System/Monitoring	ongoing	/				/				/				/				/			
Air Quality - 6.07		Flaring Systems	info	/				/				/				/				/			
Air Quality - 6.08		Management of Truck Arrivals	ongoing	/				/				/				/				/			
Air Quality - 6.10		Refuse Truck Mitigation	status																				
Air Quality - 6.11		Light Duty Alternative Fuel Vehicles	status	/				/				/				/				/			
Air Quality - 6.11		Alternative Fuel Refuse Collection/Transfer Trucks	status									✓	C	I-g						✓	C	I-i	
Air Quality - 6.11		Alternative Fuel Vehicle Report Submission	status									✓	C	I-g						✓	C	I-i	
Air Quality - 6.11		Heavy-duty, Alternative Fuel Off- Road Equipment Pilot Program	status									✓	C	I-g						✓	C	I-i	
Air Quality - 6.11		Non-Diesel, Alternative Fuel Vehicles-Transfer/Collection	status									✓	C	I-g						✓	C	I-i	
Air Quality - 6.11		Non-Diesel, Alternative Fuel VehiclesTruck Trips	status									✓	C	I-g						✓	C	I-i	
Air Quality - 6.11		Clean Fuel Demonstration Program	status									✓	C	I-g						✓	C	I-i	
Air Quality - 6.11		Compliance Evaluation	status									✓	C	I-g						✓	C	I-i	
Odor/Landfill Gas - 7.01		Landfill Gas Escape Prevention	ongoing	/				/				/				/				/			
Odor/Landfill Gas - 7.02		Landfill Gas Collection System	ongoing	/				/				/				/				/			
Odor/Landfill Gas - 7.04		Gas Collection/Flare System Risk Mitigation	ongoing					✓	C	NONE		✓	C	NONE		✓	C	NONE		✓	C	NONE	
Odor/Landfill Gas - 7.05		Wellhead Awareness	status																				
Odor/Landfill Gas - 7.06		Odor Control Measures	ongoing	/				/				/											
Odor/Landfill Gas - 7.07		Gas Recovery and Sale	status	✓	C	I-e						✓	C	I-g						✓	C	I-i	

* C = Compliant, NC = Non-Compliant, FRN = Further Review Needed, R = Resolved

** See Appendix I for Comments

Checkmark = Condition or mitigation was monitored

/ = Yearly or non-ongoing monitoring frequency

Sunshine Canyon Landfill Mitigation Monitoring Summary - County (01-19-2012 through 03-29-2012)

Reference #	Mitigation #	County Mitigation Measures and Conditions Monitored by Discipline	Monitoring Frequency	1/19/2012	Status*	Further Review Needed/Comments**	Resolved*	2/8/2012	Status*	Further Review Needed/Comments**	Resolved*	2/29/2012	Status*	Further Review Needed/Comments**	Resolved*	3/14/2012	Status*	Further Review Needed/Comments**	Resolved*	3/29/2012	Status*	Further Review Needed/Comments**	Resolved*
Traffic/Circulation – 8.03		Street Light Installation	status	/				/				/				/				/			
Traffic/Circulation – 8.04		Truck Traffic Minimization	status	✓	C	NONE		✓	C	NONE		✓	C	NONE		✓	C	NONE		✓	C	NONE	
Traffic/Circulation – 8.08		Tipping Fees for Partial Loads/Peak Hours	status	✓	C	I-e						✓	C	I-g						✓	C	I-i	
Traffic/Circulation – 8.10		Nighttime Landfill Operations Feasibility	status	/				/				/				/				/			
Traffic/Circulation – 8.11		Parking Management along San Fernando Road	status	/				/				/				/				/			
Traffic/Circulation – 8.13		Adequate Queuing	status	/				/				/				/				/			
Visual – 10.03		Landfill Flare Locations	status	/				/				/				/				/			
Visual – 10.04		Confinement of Excavation Cover Material	status	✓	C	NONE		✓	C	NONE		✓	C	NONE		✓	C	NONE		✓	C	NONE	
Visual – 10.05		Lighting Requirements	status	✓	C	NONE		✓	C	NONE		✓	C	NONE		✓	C	NONE		✓	C	NONE	
Visual – 10.11		Litter Control Program	ongoing	✓	C	NONE		✓	C	NONE		✓	C	I-g		✓	C	I-h		✓	C	I-i	
Visual – 10.11		Solid Waste Load Procedures- Improperly Covered/Contained	ongoing	✓	C	NONE		✓	C	NONE		✓	C	NONE		✓	C	NONE		✓	C	NONE	
Visual – 10.11		Debris Removal at Entrance	ongoing	✓	C	NONE		✓	C	NONE		✓	C	NONE		✓	C	NONE		✓	C	NONE	
Visual – 10.11		Litter Control-Fencing	ongoing	✓	C	NONE		✓	C	NONE		✓	C	NONE		✓	C	NONE		✓	C	NONE	
Visual – 10.11		Periodic Litter Pickup	ongoing	✓	C	NONE		✓	C	NONE		✓	C	I-g		✓	C	NONE		✓	C	NONE	
Visual – 10.11		Litter Control-Additional Measures	ongoing	✓	C	NONE		✓	C	NONE		✓	C	NONE		✓	C	NONE		✓	C	NONE	
Visual – 10.12		Discharge Control/Litter Recovery	status	✓	C	NONE		✓	C	NONE		✓	C	NONE		✓	C	NONE		✓	C	NONE	
Water Conserv. - 11.01		Water Conservation	ongoing	✓	C	I-e																	
Recycling - 14.01		On-site Waste Diversion/Recycling	ongoing	✓	C	NONE		✓	C	NONE		✓	C	NONE		✓	C	NONE		✓	C	NONE	
Recycling - 14.03		Tonnage Disposal Determination	info	/				/				/				/				/			

* C = Compliant, NC = Non-Compliant, FRN = Further Review Needed, R = Resolved

** See Appendix I for Comments

Checkmark = Condition or mitigation was monitored

/ = Yearly or non-ongoing monitoring frequency

Sunshine Canyon Landfill Mitigation Monitoring Summary - County (01-19-2012 through 03-29-2012)

Reference #	Mitigation #	County Mitigation Measures and Conditions Monitored by Discipline	Monitoring Frequency	1/19/2012	Status*	Further Review Needed/Comments**	Resolved*	2/8/2012	Status*	Further Review Needed/Comments**	Resolved*	2/29/2012	Status*	Further Review Needed/Comments**	Resolved*	3/14/2012	Status*	Further Review Needed/Comments**	Resolved*	3/29/2012	Status*	Further Review Needed/Comments**	Resolved*
Recycling - 14.04		Recycling-Variou Tasks	info	/				/				/				/				/			
		Clean Dirt Procedures		✓	C	NONE		✓	C	NONE		✓	C	NONE		✓	C	NONE		✓	C	NONE	
Site - 15.11		Reclaimed Water Utilization	status	/				/				/				/				/			
Site - 15.12		Water Conservation Measures	ongoing	✓	C	NONE		✓	C	NONE		✓	C	NONE		✓	C	NONE		✓	C	NONE	
Admin Rpts/Pgms - 17.4		Operation Compliance	info	/				/				/				/				/			
Admin Rpts/Pgms -17.10		Fill Sequencing Plans	status									✓	C	I-g									
Admin Rpts/Pgms- 17.15		Quarterly Newsletter	status																				
Landfill Operation 18.7		Graffiti Removal/Deterrent Plan	ongoing	✓	C	NONE		✓	C	NONE		✓	C	NONE		✓	C	NONE		✓	C	NONE	
Civil & Geotechnical Engineer																							
Revegetation - 44.C	44.C	Cut Slope Requirements	ongoing																				
Geology - 1.01		Survey Monument Locations	ongoing	✓	C	NONE		✓	C	NONE		✓	C	I-g						✓	C	I-i	
Geology - 1.02		Seismic Design	ongoing	✓	C	I-e		✓	NA	NONE													
Geology - 1.03		Maximum Refuse Slope Gradients	ongoing	✓	C	NONE		✓	C	NONE		✓	C	NONE		✓	C	NONE		✓	C	NONE	
Geology - 1.04		Maximum Refuse Slope Gradients	ongoing	✓	C	NONE		✓	C	NONE		✓	C	NONE		✓	C	NONE		✓	C	NONE	

* C = Compliant, NC = Non-Compliant, FRN = Further Review Needed, R = Resolved

** See Appendix I for Comments

Checkmark = Condition or mitigation was monitored

/ = Yearly or non-ongoing monitoring frequency

Sunshine Canyon Landfill Mitigation Monitoring Summary - County (01-19-2012 through 03-29-2012)

Reference #	Mitigation #	County Mitigation Measures and Conditions Monitored by Discipline	Monitoring Frequency	1/19/2012	Status*	Further Review Needed/Comments**	Resolved*	2/8/2012	Status*	Further Review Needed/Comments**	Resolved*	2/29/2012	Status*	Further Review Needed/Comments**	Resolved*	3/14/2012	Status*	Further Review Needed/Comments**	Resolved*	3/29/2012	Status*	Further Review Needed/Comments**	Resolved*
Geology - 1.05		Unsuitable Material Procedures	ongoing	✓	C	I-e		✓	FRN	I-f													
Geology - 1.06		Grading Activities Procedures	ongoing	✓	C	NONE		✓	FRN	I-f													
Geology - 1.07		Grading Activities Procedures	ongoing	✓	C	I-e		✓	FRN	I-f													
Geology - 1.09		Outer Perimeter Ridgeline Requirements	info	/				/				/				/				/			
Geology - 1.12		Soil Stabilization	ongoing	✓	C	NONE		✓		NONE		✓	C	NONE									
Geology - 1.16		Checklists/Surveys Following Earthquake	upon event		NA				NA				NA										
Geology - 1.18		Alluvium-Removal/Replacement	ongoing	✓	NA	I-e			NA	I-f		✓	NA										
Geology - 1.19		Landfill Design/Construction	ongoing	✓	NA	I-e			NA				NA										
Geology - 1.20		Landfill Design/Construction- Foundations	ongoing	✓	NA	I-e			NA				NA										
Surface Water - 2.03		Surface Drainage Control Facilities	ongoing	✓	C			✓	FRN	I-f													
Surface Water - 2.05		Underdrain Requirements	ongoing		NA			✓	FRN	I-f													
Surface Water - 2.06		Final Cover for Surface Water Runoff Control	ongoing		NA				NA				NA										
Groundwater - 3.02		Liner System Requirements	ongoing	✓	NA	I-e			NA				NA										
Groundwater - 3.04		Onsite Inspector for Liner Installation	ongoing	✓	NA	I-e			NA				NA										
Groundwater - 3.09		Alluvium Removal	ongoing	✓	NA	I-e			NA				NA										
Visual – 10.01		Landfill Elevations	ongoing		NA				NA			✓	FRN	I-g									
Visual – 10.02		Final Fill Elevations	ongoing		NA				NA			✓	C	NONE		✓	C	NONE		✓	C	NONE	
Hydrologist																							

* C = Compliant, NC = Non-Compliant, FRN = Further Review Needed, R = Resolved

** See Appendix I for Comments

Checkmark = Condition or mitigation was monitored

/ = Yearly or non-ongoing monitoring frequency

Sunshine Canyon Landfill Mitigation Monitoring Summary - County (01-19-2012 through 03-29-2012)

Reference #	Mitigation #	County Mitigation Measures and Conditions Monitored by Discipline	Monitoring Frequency	1/19/2012	Status*	Further Review Needed/Comments**	Resolved*	2/18/2012	Status*	Further Review Needed/Comments**	Resolved*	2/29/2012	Status*	Further Review Needed/Comments**	Resolved*	3/14/2012	Status*	Further Review Needed/Comments**	Resolved*	3/29/2012	Status*	Further Review Needed/Comments**	Resolved*
Grading & Drainage - 38	38	Installation of Drainage Structures	ongoing																				
Geology - 1.17		Landfill Design/Construction- Seismic	ongoing		NA				NA				NA				NA				NA		
Surface Water - 2.01		Surface Water Runoff Interception	ongoing	✓	C	NONE		✓	C	NONE						✓	C	NONE					
Surface Water - 2.02		Surface Water Runoff Collection	ongoing	✓	C	NONE		✓	C	NONE		✓	C	NONE		✓	C	NONE					
Surface Water - 2.03		Surface Drainage Control- Maintenance	ongoing	✓	C	NONE		✓	C	NONE		✓	C	NONE		✓	C	NONE					
Surface Water - 2- 04		Sedimentation Basin Capabilities	ongoing	✓	C	NONE		✓	C	NONE		✓	C	NONE		✓	C	NONE					
Surface Water - 2.05		Underdrain Placement	ongoing	✓	C	NONE		✓	C	NONE		✓	C	NONE		✓	C	NONE					
Surface Water - 2.07		Drainage Control System Design Approval	ongoing	✓	C	NONE		✓	C	NONE		✓	C	NONE		✓	C	NONE					
Surface Water - 2.08		Surface Water Runoff-Drainage System	ongoing	✓	C	NONE		✓	C	NONE		✓	C	NONE		✓	C	NONE					
Surface Water - 2.10		Surface Water Collection System- Monitoring	ongoing	✓	FRN	I-e		✓	FRN	I-f						✓	FRN	I-h					
Surface Water - 2.11		Surface Water Quality- Collection/Monitoring	ongoing	✓	C	NONE		✓	C	NONE		✓	C	NONE		✓	C	NONE					
Surface Water - 2.12		Permanent/Temporary Drainage Facilities	ongoing	✓	C	NONE		✓	C	NONE		✓	C	NONE		✓	C	NONE					
Surface Water - 2.13		Permanent/Temporary Drainage Facilities	ongoing	✓	C	NONE		✓	C	NONE		✓	C	NONE		✓	C	NONE					
Surface Water - 2.14		Erosion Control Plan	ongoing	✓	C	I-e		✓	C	I-f						✓	C	I-h					
Groundwater - 3.03		Interception of Groundwater Seepage	ongoing		NA				NA				NA				NA				NA		
Groundwater - 3.06		Monitoring Wells	ongoing		NA				NA				NA				NA				NA		

* C = Compliant, NC = Non-Compliant, FRN = Further Review Needed, R = Resolved

** See Appendix I for Comments

Checkmark = Condition or mitigation was monitored

/ = Yearly or non-ongoing monitoring frequency

Sunshine Canyon Landfill Mitigation Monitoring Summary - County (01-19-2012 through 03-29-2012)

Reference #	Mitigation #	County Mitigation Measures and Conditions Monitored by Discipline	Monitoring Frequency	1/19/2012	Status*	Further Review Needed/Comments**	Resolved*	2/8/2012	Status*	Further Review Needed/Comments**	Resolved*	2/29/2012	Status*	Further Review Needed/Comments**	Resolved*	3/14/2012	Status*	Further Review Needed/Comments**	Resolved*	3/29/2012	Status*	Further Review Needed/Comments**	Resolved*
Biologist																							
Revegetation - 44	44	Revegetation/Cover Requirements	ongoing																				
Revegetation - 44.A	44.A	Temporary Hydroseed Vegetation	ongoing					✓	C	I-f		✓	C	I-g									
Revegetation - 44.B	44.B	Interim Reclamation/Revegetation Plan-Sold Waste	ongoing					✓	C	I-f													
Revegetation - 44.D	44.D	Final Fill Slope Requirements	ongoing						NA				NA										
Revegetation - 44.E	44.E		ongoing																				
Geology - 1.13		Drainage Plan Approval	ongoing					✓	C	NONE		✓	C	I-g									
Geology - 1.14		Personnel Retention for Monitoring Soil Erosion	ongoing					✓	C	NONE		✓	C	I-g									
Groundwater - 3.11		Irrigation/Revegetation Management-Personnel Retention	ongoing					✓	C	NONE		✓	C	I-g									
BIOTA – 4.10		Oak Tree Permit	ongoing	/				/				/				/				/			
BIOTA – 4.11		Oak Tree Mitigation Plan	ongoing	✓	C	NONE		✓	C	NONE		✓	C	NONE		✓	C	NONE		✓	C	NONE	
BIOTA – 4.13		Oak Tree Mitigation Counting	ongoing	✓	C	NONE		✓	C	NONE		✓	C	NONE		✓	C	NONE		✓	C	NONE	
BIOTA – 4.20		Poultry Wire Screen	ongoing	✓	C	NONE		✓	C	NONE		✓	C	NONE		✓	C	NONE		✓	C	NONE	
BIOTA – 4.24		Drip Irrigation	ongoing	✓	C	NONE		✓	C	NONE		✓	C	NONE		✓	C	NONE		✓	C	NONE	
BIOTA – 4.27		Coastal Sage Scrub Mitigation Plan	ongoing									✓	FRN	I-g									
BIOTA – 4.28		Coastal Sage Scrub Seeding	ongoing																				
BIOTA – 4.29		San Diego Horned Lizard Mitigation	ongoing																				

* C = Compliant, NC = Non-Compliant, FRN = Further Review Needed, R = Resolved

** See Appendix I for Comments

Checkmark = Condition or mitigation was monitored

/ = Yearly or non-ongoing monitoring frequency

Sunshine Canyon Landfill Mitigation Monitoring Summary - County (01-19-2012 through 03-29-2012)

Reference #	Mitigation #	County Mitigation Measures and Conditions Monitored by Discipline	Monitoring Frequency	1/19/2012	Status*	Further Review Needed/Comments**	Resolved*	2/8/2012	Status*	Further Review Needed/Comments**	Resolved*	2/29/2012	Status*	Further Review Needed/Comments**	Resolved*	3/14/2012	Status*	Further Review Needed/Comments**	Resolved*	3/29/2012	Status*	Further Review Needed/Comments**	Resolved*
BIOTA – 4.30		California Gnatcatcher Surveys	ongoing	/				/				/				/							
BIOTA – 4.31		Least Bell's Vireo Surveys	ongoing	/				/				/				/							
BIOTA – 4.32		Western Burrowing Owl Surveys	ongoing	/				/				/				/							
BIOTA – 4.33		Migratory Bird Treaty Act	ongoing	/				/				/				/				✓	C	I-i	
BIOTA – 4.34		Raptor Nests Habitat	ongoing	/				/				/				/				✓	C	I-i	
BIOTA – 4.36		Personnel Retention for Monitoring Revegetation Plan	ongoing					✓	C	NONE													
BIOTA – 4.37		Personnel Retention for Monitoring Revegetation Plan, Onsite Plants	status					✓	C	NONE													
BIOTA – 4.38		Green Waste Material	ongoing					✓	C	NONE													
BIOTA – 4.39		Revegetation of Slopes/Fill Areas	ongoing																				
BIOTA – 4.41		Revegetation Plan-Replacement Cover	ongoing																				
BIOTA – 4.42		Interim Vegetation	ongoing					✓	C	I-f													
BIOTA – 4.43		Replacement Riparian Habitat	status																				
Air Quality - 6.02		Dust Control	ongoing					✓	C	NONE		✓	C	I-g									
Visual – 10.06		Upper Ridge Planting/Revegetation	ongoing					✓	C	NONE		✓	C	NONE									
Visual – 10.07		Tree Planting Around Perimeter	ongoing					✓	C	NONE		✓	C	NONE									
Visual – 10.08		Cover/Revegetation Requirements	ongoing					✓	C	I-f													
Visual – 10.08		Solid Waste Disposal Procedures	ongoing					✓	C	I-f													
Visual – 10.08		Final Cut Slope Steepness	ongoing					✓	C	NONE		✓	C	NONE									
Visual – 10.08		Final Fill Slopes- Reclamation/Revegetation	status					/	NA			/	NA			/	NA			/	NA		
Visual – 10.08		Revegetation Requirements	status					/	NA			/	NA			/	NA			/	NA		

* C = Compliant, NC = Non-Compliant, FRN = Further Review Needed, R = Resolved

** See Appendix I for Comments

Checkmark = Condition or mitigation was monitored

/ = Yearly or non-ongoing monitoring frequency

Sunshine Canyon Landfill Mitigation Monitoring Summary - County (01-19-2012 through 03-29-2012)

Reference #	Mitigation #	County Mitigation Measures and Conditions Monitored by Discipline	Monitoring Frequency	1/19/2012	Status*	Further Review Needed/Comments**	Resolved*	2/8/2012	Status*	Further Review Needed/Comments**	Resolved*	2/29/2012	Status*	Further Review Needed/Comments**	Resolved*	3/14/2012	Status*	Further Review Needed/Comments**	Resolved*	3/29/2012	Status*	Further Review Needed/Comments**	Resolved*
Visual – 10.09		Final Cover Composition Requirements	ongoing					/	NA			/	NA			/	NA			/	NA		
Visual – 10.10		Buffer Zone Maintenance	ongoing					✓	C	NONE		✓	C	NONE		✓	C	NONE		✓	C	NONE	
Water Conservation -		Plant Species	ongoing					✓	C	NONE		✓	C	NONE		✓	C	NONE		✓	C	NONE	
Fire Service - 12.01		Brush Clearance Measures	ongoing					✓	C	NONE		✓	C	NONE		✓	C	NONE		✓	C	NONE	
Air Quality & Noise Specialist																							
Fugitive Dust - 45.F	45.F	Fugitive Dust Monitoring	ongoing	✓	C	NONE		✓	C	NONE		✓	C	NONE						✓	C	NONE	
Fugitive Dust - 45.I	45.I	Paved Roads-Cleaning	ongoing	✓	C	NONE		✓	C	NONE		✓	C	NONE						✓	C	NONE	
Fugitive Dust - 45.N	45.N	Report Submission-Dust/Odor	every quarter	/				/				/								/			
Air Quality Monitoring - 81	81	Air Quality Monitoring-Tests	ongoing					/				/								/			
Air Quality – 6.01		Fugitive Dust Aversion	ongoing	✓	C	NONE		✓	C	NONE		✓	C	NONE						✓	C	NONE	
Air Quality – 6.01		Working Face Requirements	ongoing	✓	C	NONE		✓	C	NONE		✓	C	NONE						✓	C	NONE	
Air Quality – 6.01		Erosion Control-Daily Cover	ongoing	✓	C	NONE		✓	C	NONE		✓	C	NONE						✓	C	NONE	
Air Quality – 6.01		Soil Stockpile Requirements	ongoing	✓	C	NONE		✓	C	NONE		✓	C	NONE						✓	C	NONE	
Air Quality – 6.01		Active Area Fill	ongoing	✓	C	NONE		✓	C	NONE		✓	C	NONE						✓	C	NONE	
Air Quality – 6.01		Soil Sealant	ongoing	✓	C	NONE		✓	C	NONE		✓	C	NONE						✓	C	NONE	

* C = Compliant, NC = Non-Compliant, FRN = Further Review Needed, R = Resolved

** See Appendix I for Comments

Checkmark = Condition or mitigation was monitored

/ = Yearly or non-ongoing monitoring frequency

Sunshine Canyon Landfill Mitigation Monitoring Summary - County (01-19-2012 through 03-29-2012)

Reference #	Mitigation #	County Mitigation Measures and Conditions Monitored by Discipline	Monitoring Frequency	1/19/2012	Status*	Further Review Needed/Comments**	Resolved*	2/8/2012	Status*	Further Review Needed/Comments**	Resolved*	2/29/2012	Status*	Further Review Needed/Comments**	Resolved*	3/14/2012	Status*	Further Review Needed/Comments**	Resolved*	3/29/2012	Status*	Further Review Needed/Comments**	Resolved*
Air Quality – 6.01		Dust Emissions-Road Maintenance	ongoing	✓	C	NONE		✓	C	NONE		✓	C	NONE						✓	C	NONE	
Air Quality – 6.01		Access Roads-Paving	ongoing	✓	C	NONE		✓	FRN	I-f		✓	FRN	I-g						✓	FRN	I-i	
Air Quality – 6.01		Dust Generation-Dumping	ongoing	✓	C	NONE		✓	C	NONE		✓	C	NONE						✓	C	NONE	
Air Quality – 6.01		Water Tanks/Piping Maintenance	ongoing	✓	C	NONE		✓	C	NONE		✓	C	NONE						✓	C	NONE	
Air Quality – 6.01		Wind Speed Monitoring	ongoing	✓	C	NONE		✓	C	NONE		✓	C	NONE						✓	C	NONE	
Air Quality – 6.01		Report Submission-Dust/Odor	every quarter	✓	C	NONE		/				/				/				/			
Odor/Landfill Gas – 7.03		Odor/Landfill Gas Monitoring Program	ongoing	/				/				/				/				/			
Odor/Landfill Gas – 7.03		Landfill Surface Sampling	ongoing	/				/				/				/				/			
Odor/Landfill Gas – 7.03		Landfill Perimeter Air Samples	ongoing	/				/				/				/				/			
Odor/Landfill Gas – 7.03		Landfill Surface Monitoring	ongoing	/				/				/				/				/			
Odor/Landfill Gas – 7.03		LFG Collection System Monitoring	ongoing	/				/				/				/				/			
Noise – 9.01		Landfill Access/Operation	info	/				/				/				/				/			
Noise – 9.03		Landfill Equipment-Mufflers/Silencers	ongoing	✓	C	I-e		✓	C	I-f													
Admin Rpts/Pqms-17.16		Air Quality Monitoring-Corrective Action Plan	ongoing	/				/				/				/				/			
Hydrology, Hazardous Waste / Risk of Upset																							

* C = Compliant, NC = Non-Compliant, FRN = Further Review Needed, R = Resolved

** See Appendix I for Comments

Checkmark = Condition or mitigation was monitored

/ = Yearly or non-ongoing monitoring frequency

Sunshine Canyon Landfill Mitigation Monitoring Summary - County (01-19-2012 through 03-29-2012)

Reference #	Mitigation #	County Mitigation Measures and Conditions Monitored by Discipline	Monitoring Frequency	1/19/2012	Status*	Further Review Needed/Comments**	Resolved*	2/8/2012	Status*	Further Review Needed/Comments**	Resolved*	2/29/2012	Status*	Further Review Needed/Comments**	Resolved*	3/14/2012	Status*	Further Review Needed/Comments**	Resolved*	3/29/2012	Status*	Further Review Needed/Comments**	Resolved*
IMP - Part IV.E	IMP 4	Load Inspection-Random Manual	ongoing									✓	C	NONE									
Groundwater - 3.05		Leachate Collection and Removal System	ongoing	✓	C	NONE		✓	C	NONE		✓	C	NONE									
Groundwater - 3.15		Underground Diesel Fuel Storage Tanks	ongoing									✓	C	I-g									
Fire Service - 12.02		On-site Fire Response Capabilities Operating Equipment	ongoing									✓	C	I-g									
Fire Service - 12.03		On-site Fire Response Capabilities Roads/Water	ongoing									✓	C	I-g									
Fire Service - 12.04		On-site Fuel Storage Tanks-Permit Issuance	ongoing									✓	C	NONE									
Fire Service - 12.05		Building Limits	ongoing	✓	C	NONE		✓	C	NONE		✓	C	NONE									
Fire Service - 12.06		Methane Gas Monitoring-On-site Structures	ongoing					✓	C	NONE		✓	C	I-g									
Hazardous Materials – 13.02		Waste Load Checking Program	ongoing									✓	C	I-g									
Hazardous Materials – 13.05		Hazardous Waste Disposal	ongoing									✓	C	NONE									
Hazardous Materials – 13.10		Hazardous Waste-Procedures	ongoing									✓	C	I-g									
Hazardous Materials – 13.11		Spill Response Program	ongoing									✓	C	NONE									
Safety - 16.02		Injury and Illness Prevention Program	status									✓	C	NONE									
Safety - 16.03		Working Conditions-Monitoring	status									✓	C	NONE									
Safety - 16.04		Inspection Checklist-Work Area Exposure	status									✓	C	NONE									
Safety - 16.07		Accident/Injury Reports	status									✓	C	I-g									

* C = Compliant, NC = Non-Compliant, FRN = Further Review Needed, R = Resolved

** See Appendix I for Comments

Checkmark = Condition or mitigation was monitored

/ = Yearly or non-ongoing monitoring frequency

Sunshine Canyon Landfill Mitigation Monitoring Summary - County (01-19-2012 through 03-29-2012)

Reference #	Mitigation #	County Mitigation Measures and Conditions Monitored by Discipline	Monitoring Frequency	1/19/2012	Status*	Further Review Needed/Comments**	Resolved*	2/8/2012	Status*	Further Review Needed/Comments**	Resolved*	2/29/2012	Status*	Further Review Needed/Comments**	Resolved*	3/14/2012	Status*	Further Review Needed/Comments**	Resolved*	3/29/2012	Status*	Further Review Needed/Comments**	Resolved*
Safety - 16.08		First-aid Kits	ongoing									✓	C	NONE									
Safety - 16.10		Lockout/Blackout Procedures	status									✓	C	NONE									
Safety - 16.11		Personal Protective Equipment	status									✓	C	NONE									
Landfill Operation 18.8		Prohibited Waste Procedures	ongoing									✓	C	NONE									
Archaeologist																							
Ecological Significance - 62	62	Archaeological/Paleontological Identification/Conservation	ongoing		NA				NA				NA				NA				NA		
IMP - Part VII.B	IMP 7	Archaeological/Paleontological Rep	ongoing		NA				NA				NA				NA				NA		
Archaeological - 5.01		Archaeological Resurvey	ongoing		NA				NA				NA				NA				NA		
Archaeological - 5.02		Onsite Archaeologist	ongoing		NA				NA				NA				NA				NA		
Archaeological - 5.03		Onsite Paleontologist	ongoing		NA				NA				NA				NA				NA		
Archaeological - 5.04		Archaeological/Paleontological Identification Instruction	ongoing		NA				NA				NA				NA				NA		
Archaeological - 5.05		Archaeological Resource Curation	ongoing		NA				NA				NA				NA				NA		
Paleontologist																							
Ecological Significance - 62	62	Archaeological/Paleontological - Material	ongoing		NA				NA				NA				NA			✓	C	I-i	

* C = Compliant, NC = Non-Compliant, FRN = Further Review Needed, R = Resolved

** See Appendix I for Comments

Checkmark = Condition or mitigation was monitored

/ = Yearly or non-ongoing monitoring frequency

Sunshine Canyon Landfill Mitigation Monitoring Summary - County (01-19-2012 through 03-29-2012)

Reference #	Mitigation #	County Mitigation Measures and Conditions Monitored by Discipline	Monitoring Frequency	1/19/2012	Status*	Further Review Needed/Comments**	Resolved*	2/8/2012	Status*	Further Review Needed/Comments**	Resolved*	2/29/2012	Status*	Further Review Needed/Comments**	Resolved*	3/14/2012	Status*	Further Review Needed/Comments**	Resolved*	3/29/2012	Status*	Further Review Needed/Comments**	Resolved*
IMP - Part VII.B	IMP 7	Archaeological/Paleontological- Report Submission	ongoing		NA				NA				NA				NA						
Potential Tasks																							
Landfill Capacity - 24	24																						
Air Quality - 51	51																						

* C = Compliant, NC = Non-Compliant, FRN = Further Review Needed, R = Resolved

** See Appendix I for Comments

Checkmark = Condition or mitigation was monitored

/ = Yearly or non-ongoing monitoring frequency