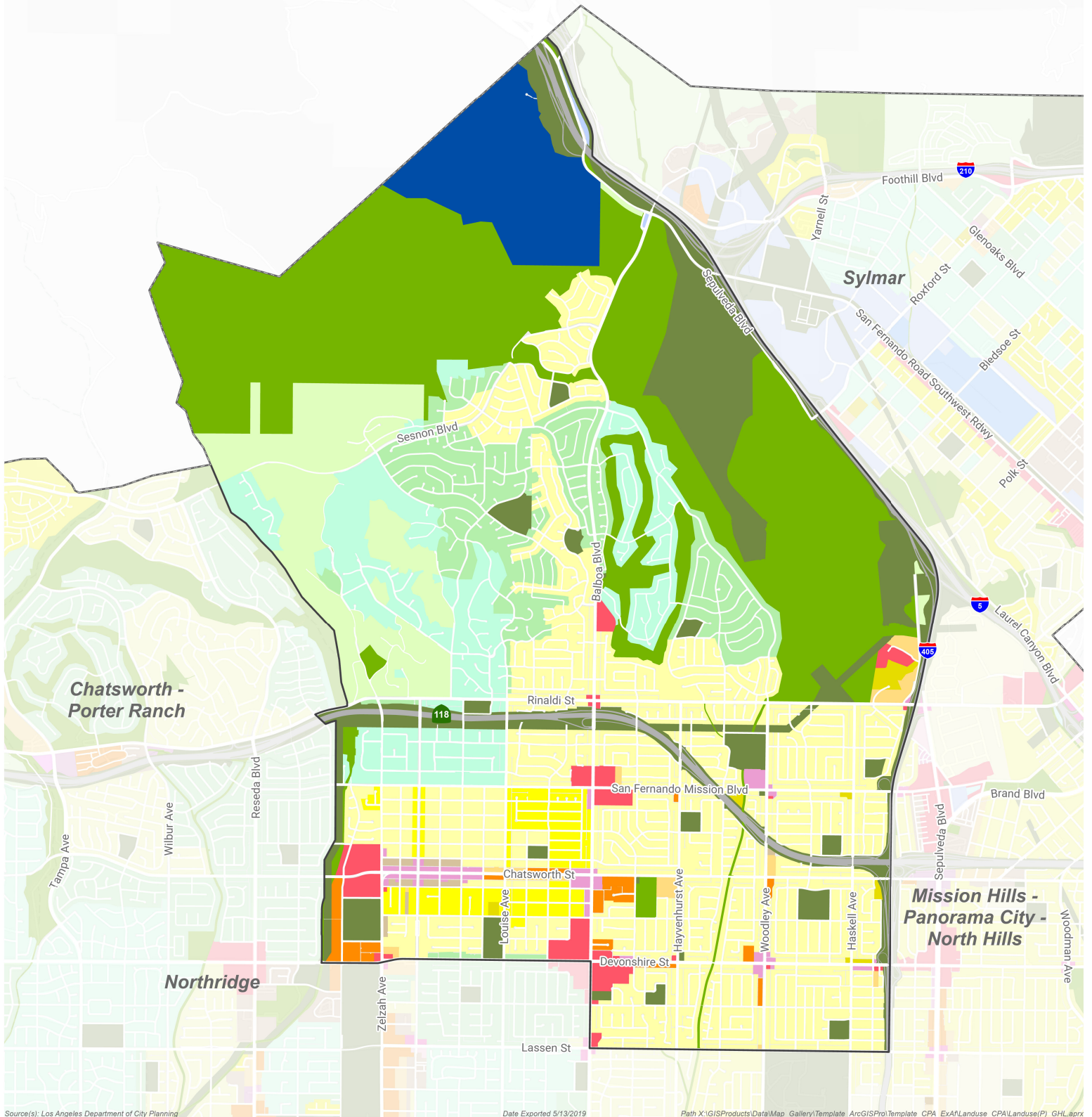


General Plan Land Use

Granada Hills - Knollwood Community Plan Area



Source(s): Los Angeles Department of City Planning

Date Exported 5/13/2019

Path X:\GISProducts\Data\Map_Gallery\Template_ArcGISPro\Template_CPA_EXA\Landuse_CPALanduse(P)_GHL.aprx

| | | | |
|-------------|----------------------|-------------------------|------------------------------|
| Minimum | Low III | Neighborhood Commercial | Public Facilities |
| Very Low I | Low Medium I | Limited Industrial | Public Facilities - Freeways |
| Very Low II | Low Medium II | Limited Manufacturing | Community Plan Boundary |
| Low I | Medium | Heavy Industrial | City Boundary |
| Low II | Community Commercial | Open Space | |

