



**Los Angeles
Department of
City Planning
Virtual Scoping
Meeting**

Berggruen Institute Project

ENV-2019-4565-EIR

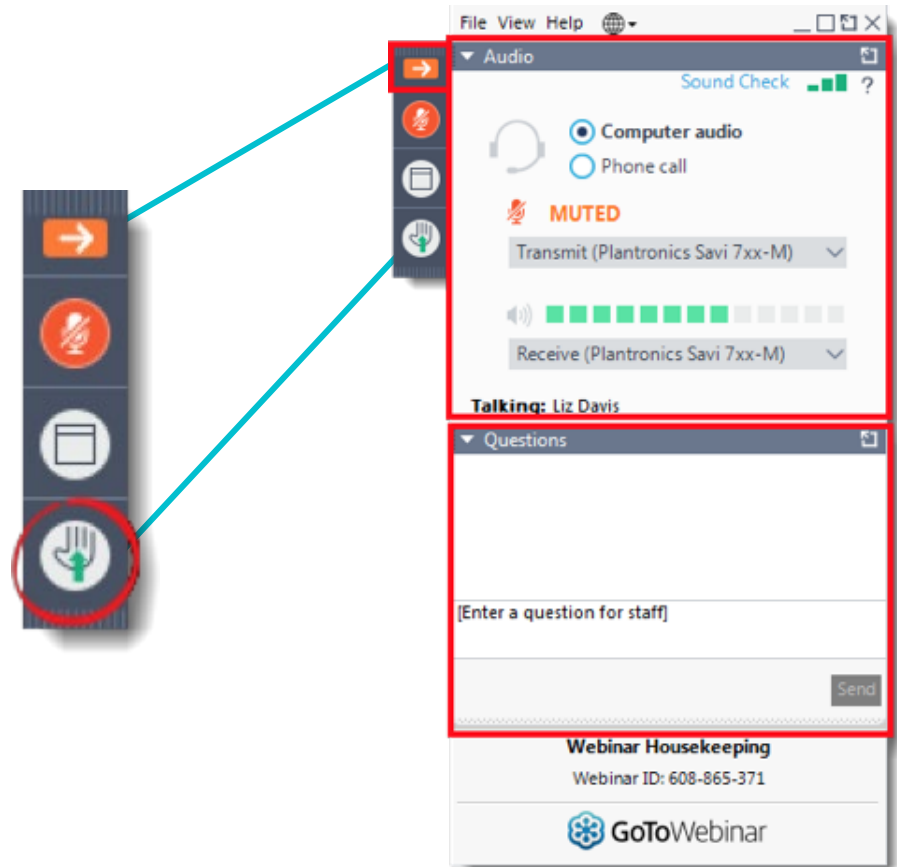
1901 North Sepulveda Boulevard and 2100 - 2187
North Canyonback Road

December 8, 2020

5:30 pm

Logistics

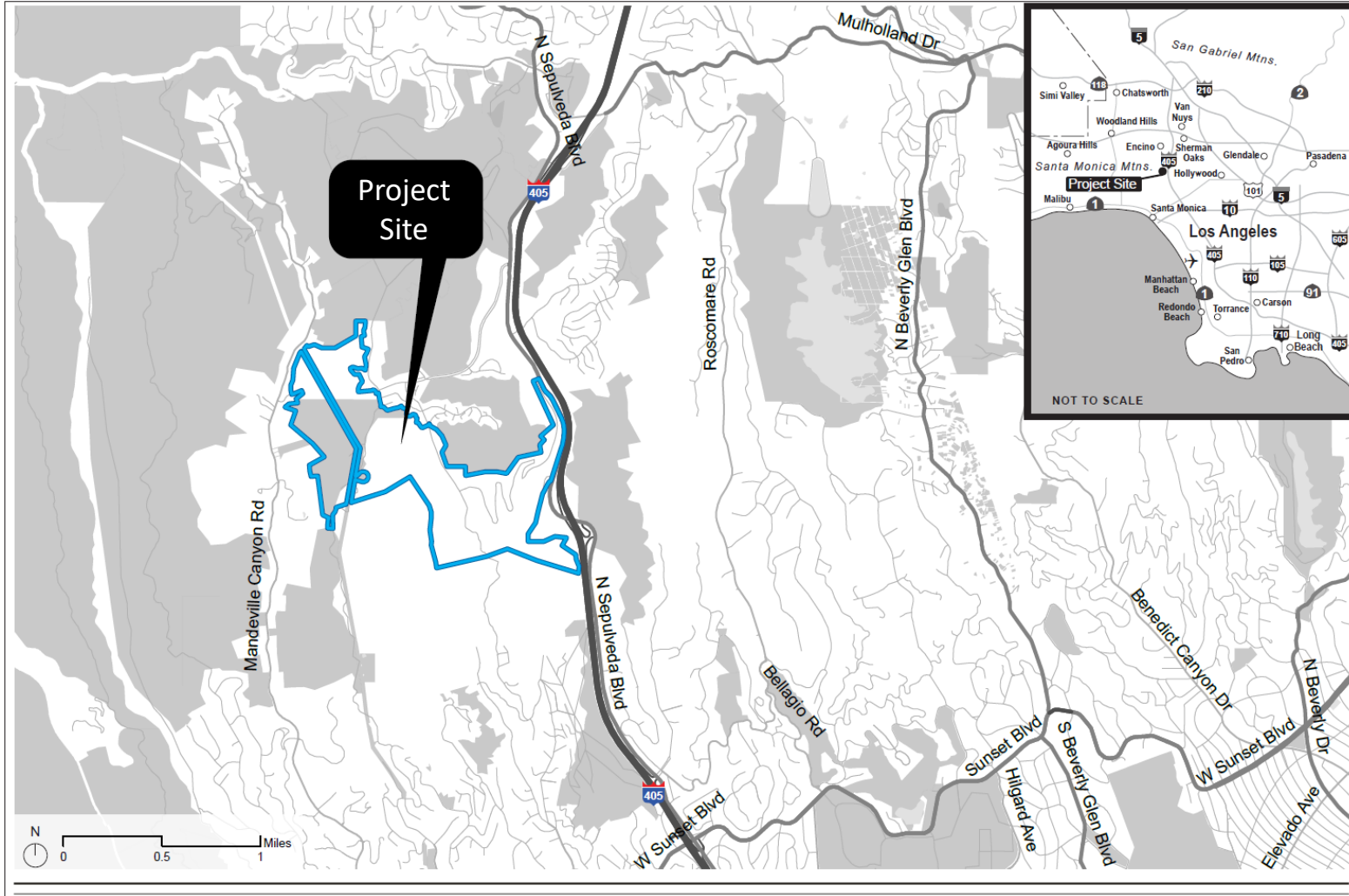
- Access the **Audio** panel to change your preferred audio output
- Use the “**hand raise**” icon to bring attention to a technical difficulty
- Use the **Questions** panel to type a question or comment



Agenda and Objectives

- Provide an overview of the Project
- Walk through the Project review including the Environmental Impact Report (EIR) process
- Explanation of how to submit public comments
- Answer questions regarding the EIR process and Project specific questions

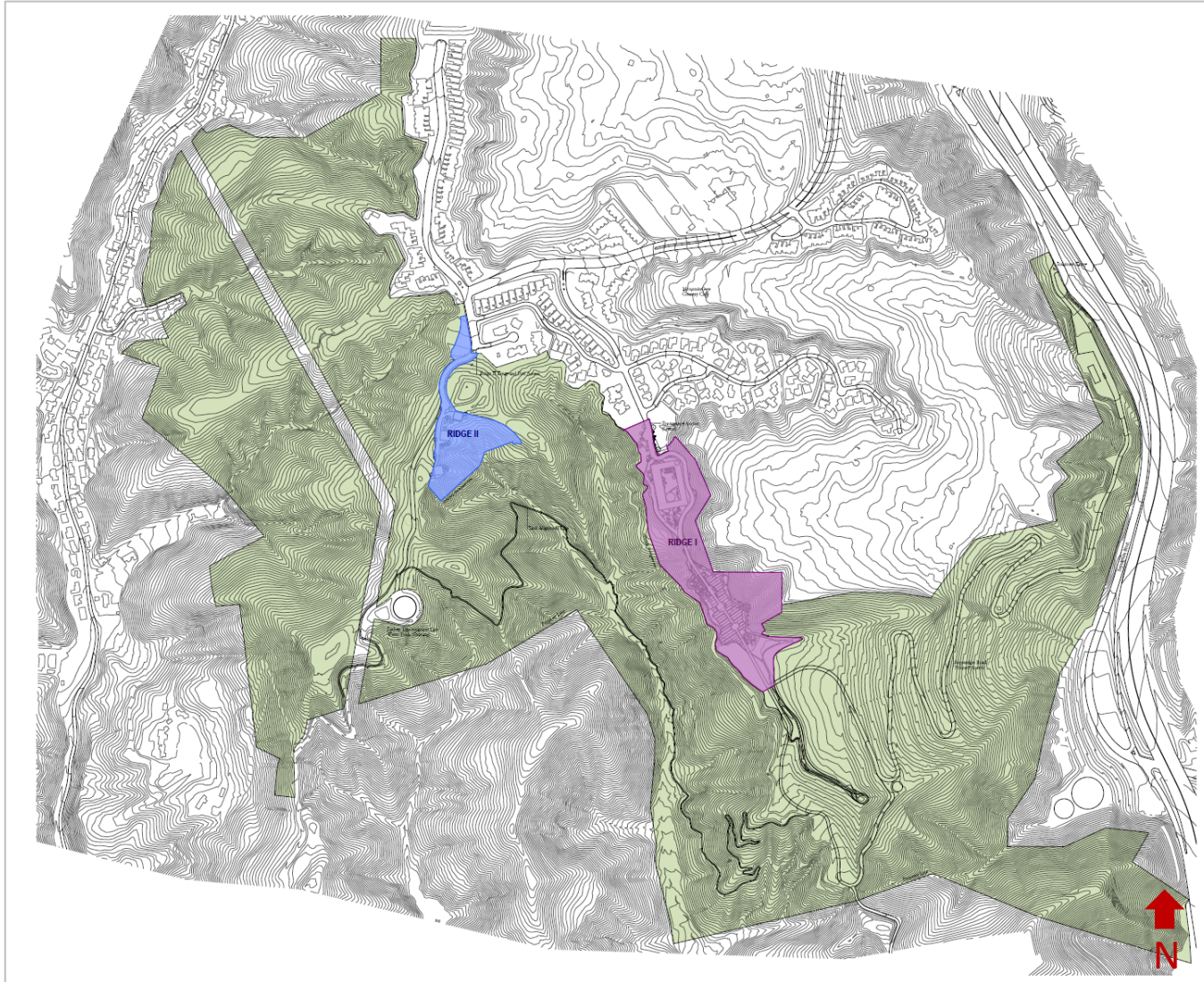
Project Location and Vicinity



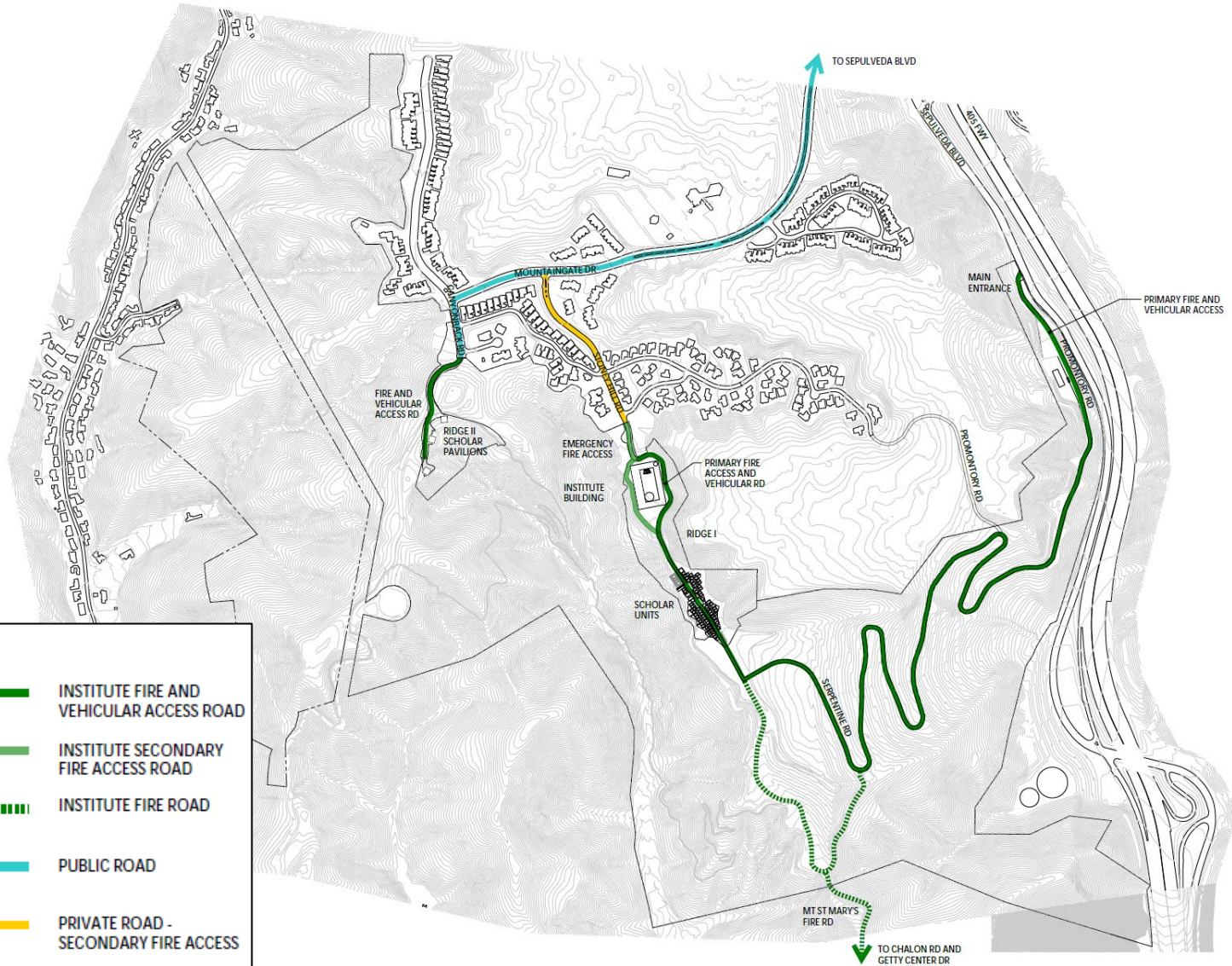
Existing Conditions and Aerial View of Site



Ridge 1 and Ridge 2



Site Access



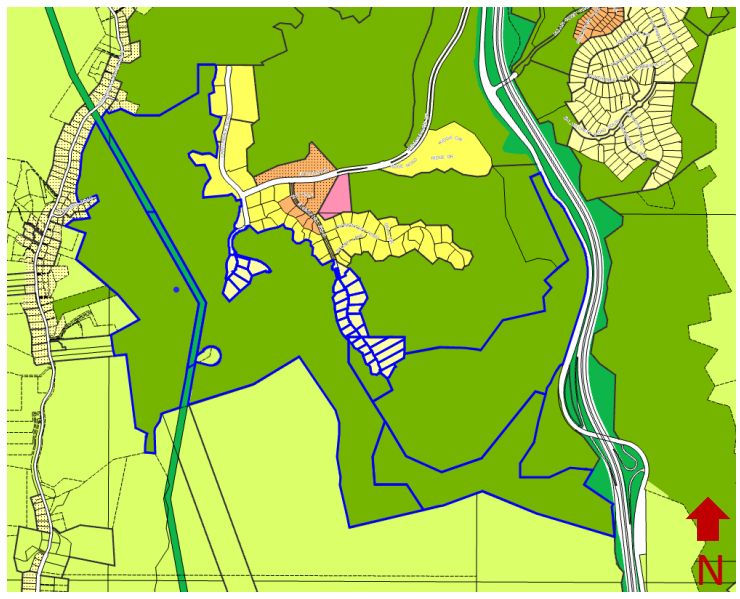
LEGEND

- INSTITUTE FIRE AND VEHICULAR ACCESS ROAD
- INSTITUTE SECONDARY FIRE ACCESS ROAD
- INSTITUTE FIRE ROAD
- PUBLIC ROAD
- PRIVATE ROAD - SECONDARY FIRE ACCESS

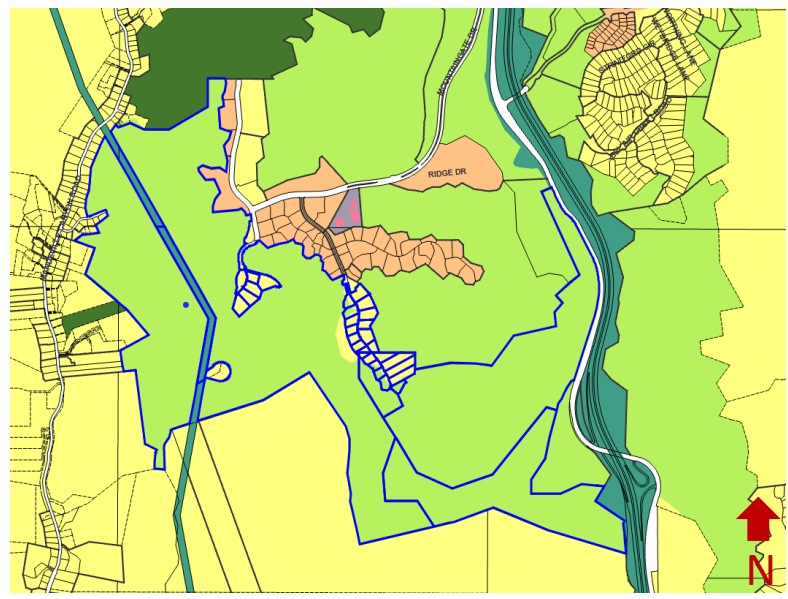


Existing Land Use and Zoning

Land Use Designation



Zoning



RESIDENTIAL

- Minimum Residential
- Very Low / Very Low I Residential
- Very Low II Residential
- Low / Low I Residential
- Low II Residential
- Low Medium / Low Medium I Residential
- Low Medium II Residential
- Medium Residential

COMMERCIAL

- Neighborhood Office Commercial

OPEN SPACE / PUBLIC FACILITIES

- Open Space
- Public / Open Space
- Public / Quasi-Public Open Space
- Other Public Open Space
- Public Facilities

GENERALIZED ZONING

- OS, GW
- A, RA
- RE, RS, R1, RU, RZ, RW1
- R2, RD, RMP, RW2, R3, RAS, R4, R5
- CR, C1, C1.5, C2, C4, C5, CW, ADP, LASED, CEC, USC
- CM, MR, WC, CCS, UV, UI, UC, M1, M2, LAX, M3, SL
- P, PB
- PF
- HILLSIDE

Existing Conditions



Ridge 1

Existing Conditions



View of Ridge 1



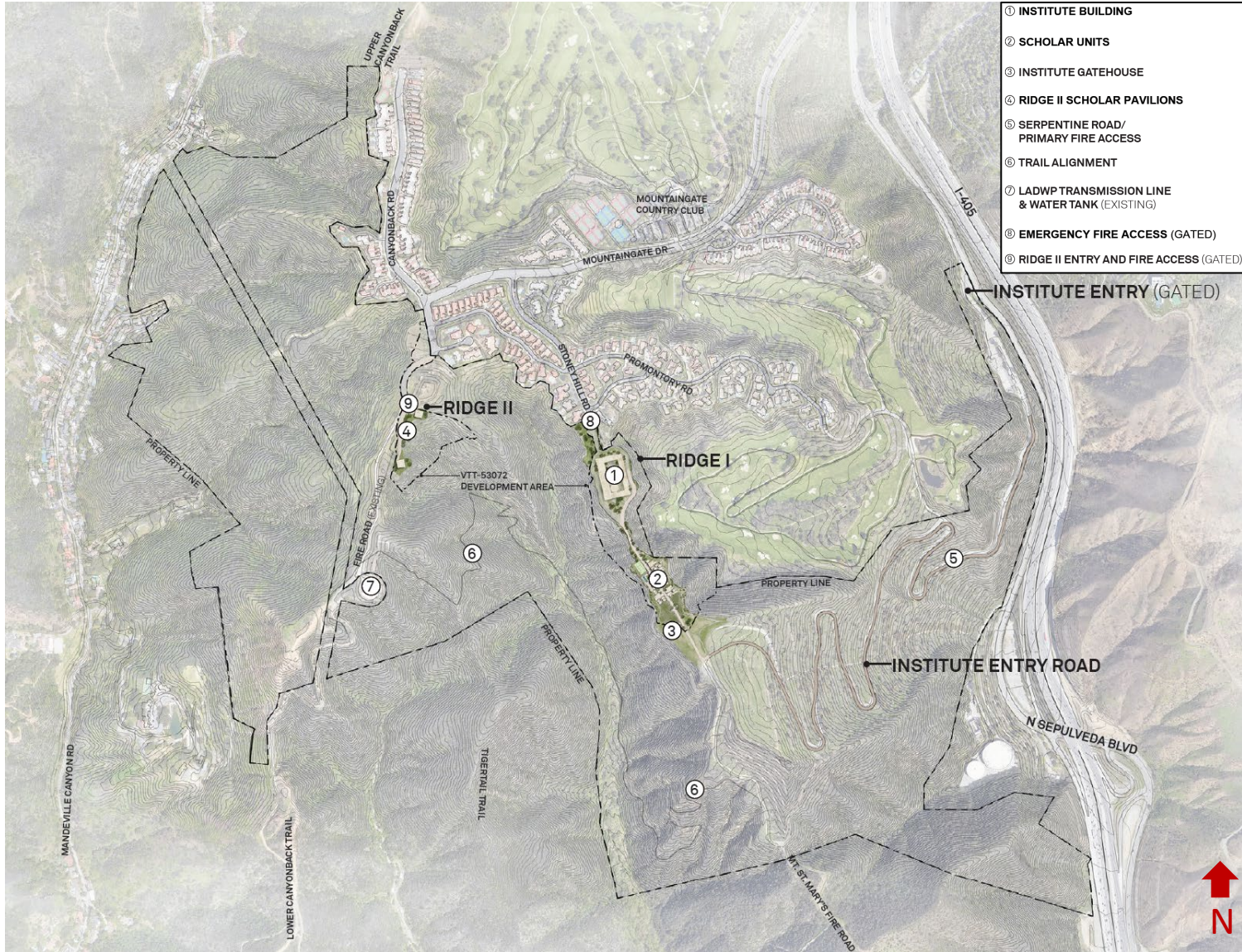
Mount Saint Mary's Fire Road Trail



Riordan Trail



Project Overview & Site Plan



Ridge 1 Conceptual Site Plan



- ① INSTITUTE BUILDING
- ② INSTITUTE GATEHOUSE
- ③ INSTITUTE AUDITORIUM
- ④ INSTITUTE COURTYARD
- ⑤ INSTITUTE ROAD/
PRIMARY FIRE ACCESS
- ⑥ SCHOLAR UNITS
- ⑦ PEDESTRIAN PATHWAYS
- ⑧ FITNESS AREA
- ⑨ EMERGENCY FIRE ACCESS (GATED)
- ⑩ FIRE ACCESS ROAD
- ⑪ FUTURE EXPANSION

Ridge 2 Conceptual Site Plan



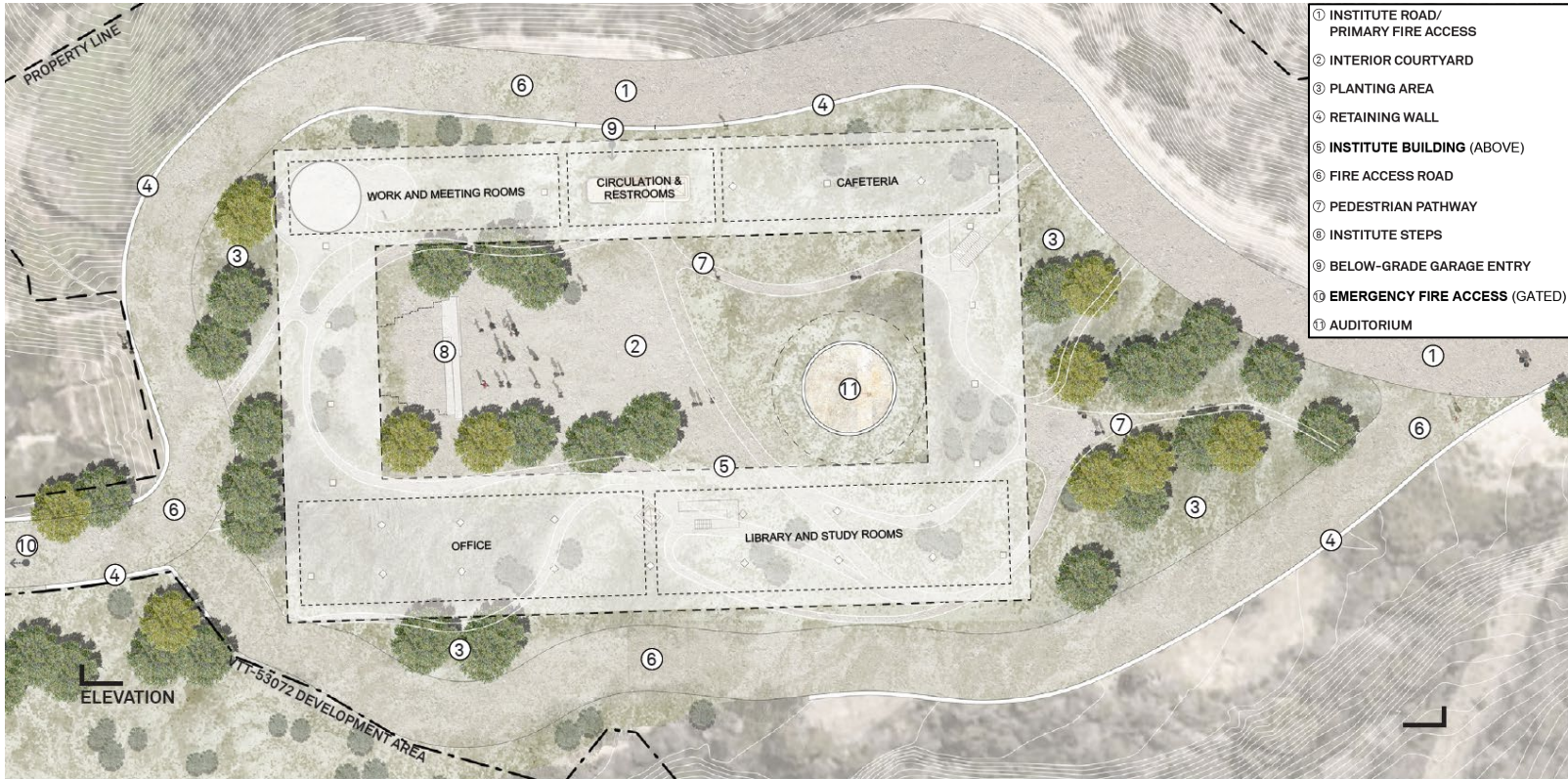
Ridge 1 Site Access



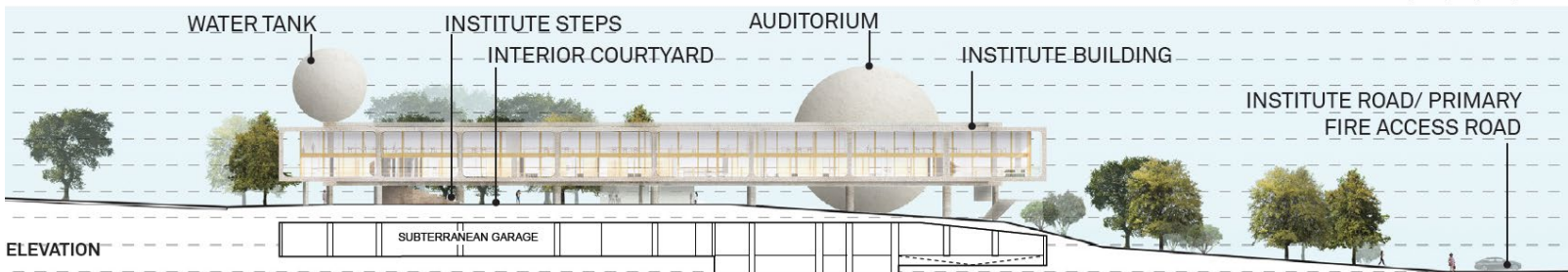
Ridge 2 Site Access



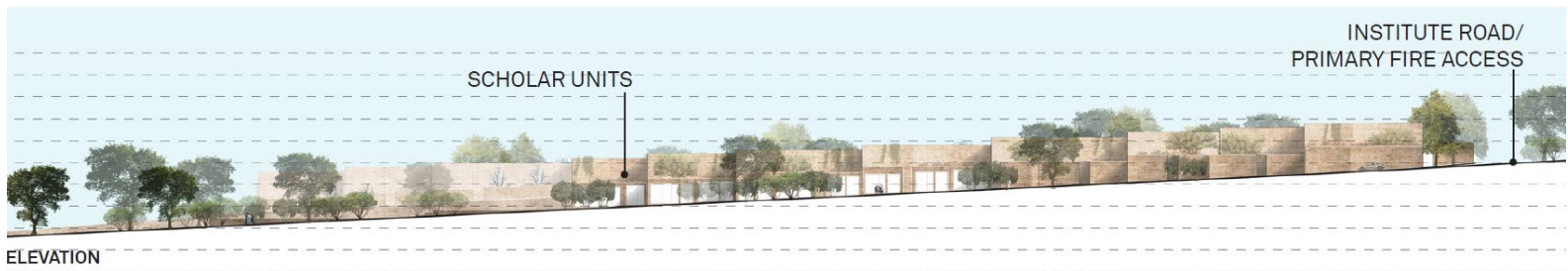
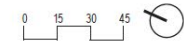
Institute Building



- ① INSTITUTE ROAD/
PRIMARY FIRE ACCESS
- ② INTERIOR COURTYARD
- ③ PLANTING AREA
- ④ RETAINING WALL
- ⑤ INSTITUTE BUILDING (ABOVE)
- ⑥ FIRE ACCESS ROAD
- ⑦ PEDESTRIAN PATHWAY
- ⑧ INSTITUTE STEPS
- ⑨ BELOW-GRADE GARAGE ENTRY
- ⑩ EMERGENCY FIRE ACCESS (GATED)
- ⑪ AUDITORIUM



Scholar Units



Scholar Pavilions Ridge 2



Rendering Ridge 1



Rendering Institute Building



Rendering Institute Building



Rendering Scholar Units



Rendering Scholar Units



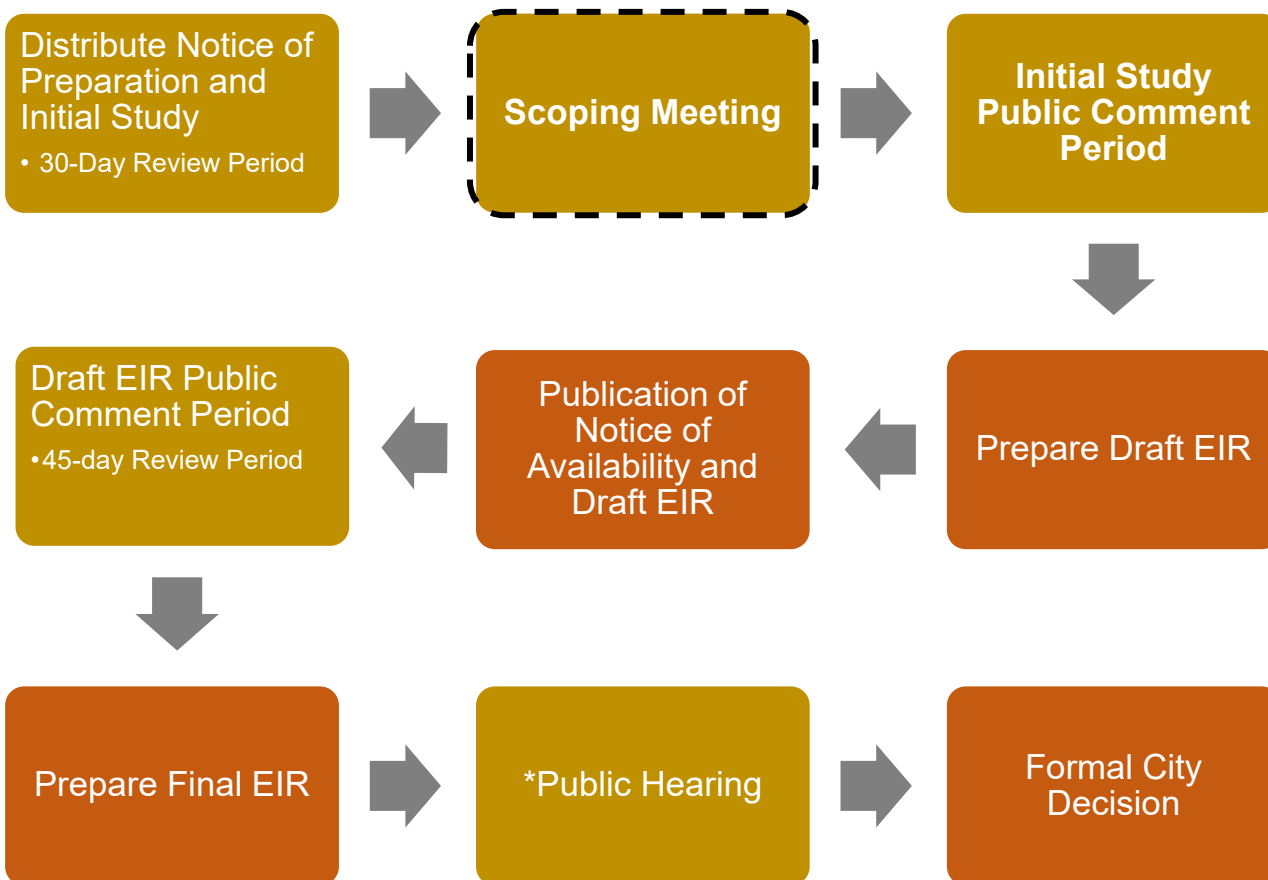
Fire Protection Measures

- Fire protection plan, conformance with local codes and national programs
- Ignition-resistant buildings and landscapes with perimeter fuel buffers
- On-site water storage that would supplement LAFD capabilities
- On-site fire-fighting tools (e.g. portable monitor nozzles) and hydrants
- Serpentine Road - additional evacuation route for Mountaingate residents
- Vegetation and fuel management plan to reduce non-native species on-site, create defensible spaces
- Enhanced building alarm and fire protection system

Discretionary Actions

- A General Plan Amendment to establish the Berggruen Institute Specific Plan within the Brentwood–Pacific Palisades Community Plan.
- A Zone Change from the [Q]RE20-1-H, [T][Q]A1-1, and [Q]A1-1 Zones to the Berggruen Institute Specific Plan Zone and the Berggruen Institute Open Space Zone.
- A Specific Plan to provide regulatory controls and the systematic execution of the General Plan within the Project Site.
- A Vesting Tentative Tract for the merger and re-subdivision of the Project Site and the creation of new ground lots.
- LAFD approval of Emergency Helicopter Landing Site (if required by LAFD).

Project Milestones



Opportunities for Public Input
* Includes multiple public meetings

EIR Scope and Contents

Impacts Found to be Less Than Significant

- Mineral Resources
- Population and Housing

Topics to be Analyzed in the EIR

- Aesthetics
- Agriculture & Forestry Resources
- Air Quality
- Biological Resources
- Cultural Resources
- Energy
- Geology and Soils
- Greenhouse Gas Emissions
- Hazards & Hazardous Materials
- Hydrology and Water Quality
- Land Use and Planning
- Noise
- Public Services
- Recreation
- Transportation
- Tribal Cultural Resources
- Utilities and Service Systems
- Wildfire

How to Submit Public Comments

- Through mail:

**Attn: Alan Como, AICP
City of Los Angeles
Department of City Planning
221 N. Figueroa Street,
Suite 1350
Los Angeles, CA 90012**

Reference:
Berggruen Institute Project

- Through email:

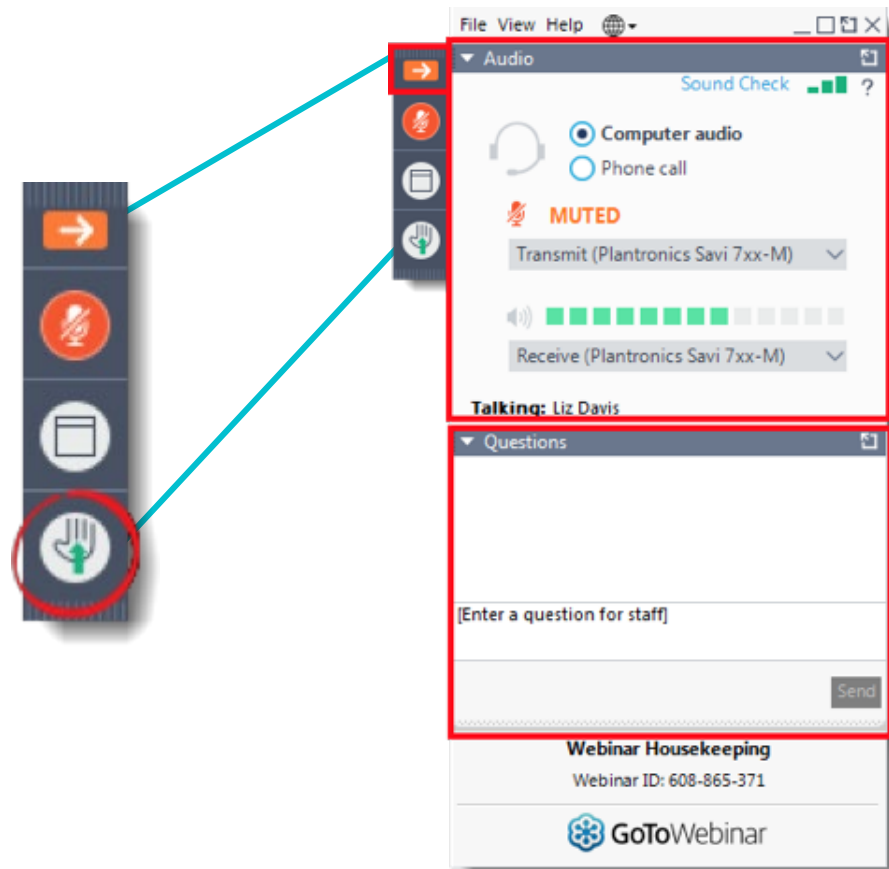
alan.como@lacity.org

- All written comments must be submitted by **4:00 p.m., December 21, 2020**
- For more information about the project please visit:
<https://planning.lacity.org/development-services/eir/berggruen-institute-project>

*Submitting a question or comment during the following Q & A portion of the meeting **DOES NOT** constitute a formal written comment to be included as part of the NOP comment period.*

Questions and Answers

- Use the “**hand raise**” icon to bring attention to a technical difficulty
- Use the **Questions** panel to type a question or comment



Questions & Answers

