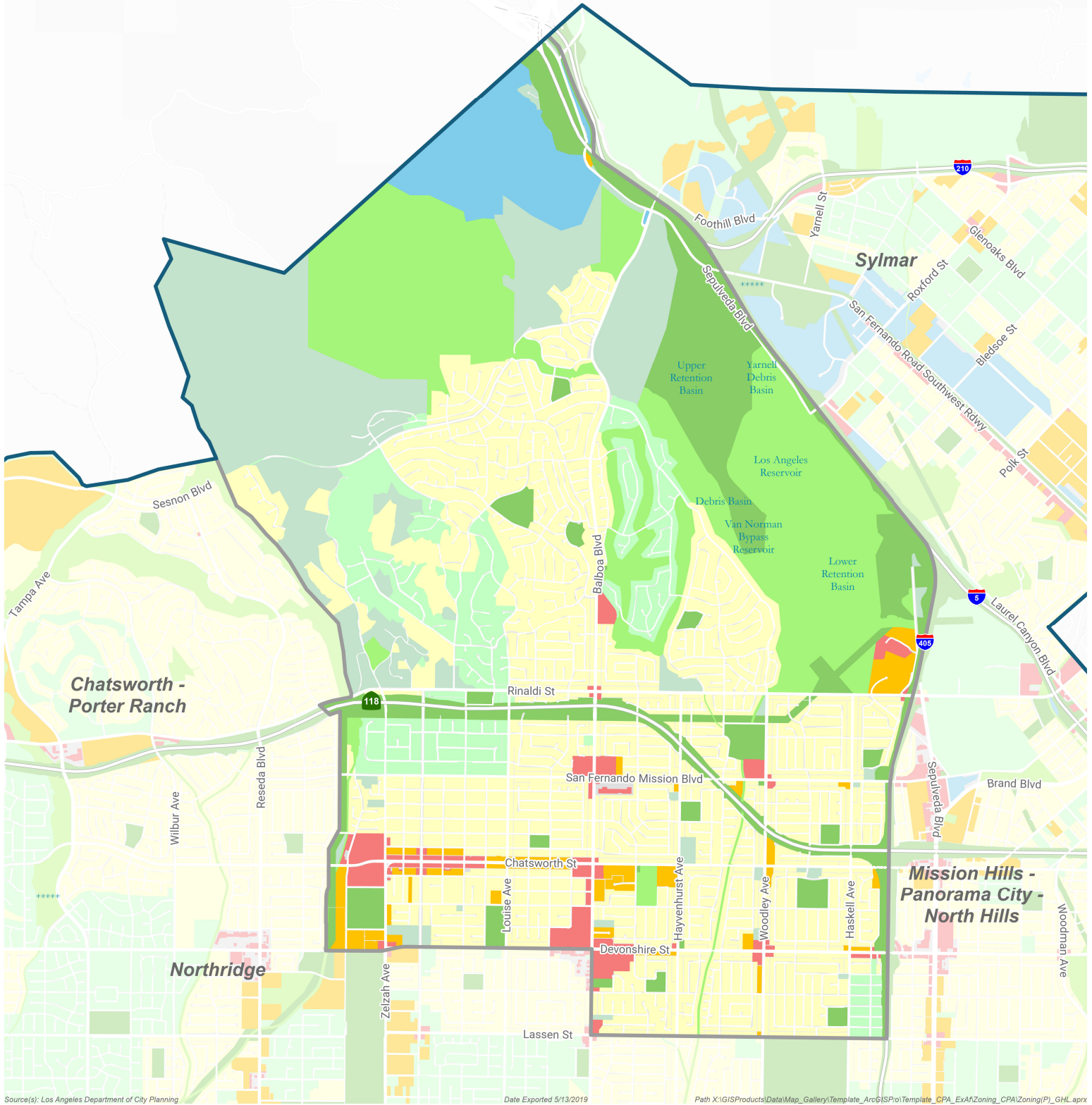


Generalized Zoning

Granada Hills - Knollwood Community Plan Area



Source(s): Los Angeles Department of City Planning

Date Exported 5/13/2019

Path X:\GISProducts\Data\Map_Gallery\Template_ArcGISPro\Template_CPA_EXA\Zoning_CPA\Zoning(P)_GHL.aprx

- Agricultural; Suburban, A,RA
- Single Family Residential, RE,RS,R1,RU,RZ,RW1
- Multiple Family Residential, R2,RD,RMP,RW2,R3,RAS3,R4,RAS4,R5, R3(EC)
- Commercial, CR,C1,C1.5,C2,C4,C5,CW,ADP,LASED,CEC,USC, MU(EC), NMU(EC)
- Manufacturing, CM,MR,WC,CCS,UV,UI,UC,M1,M2,LAX,M3,SL
- Open Space, OS,GW
- Public Facilities, PF
- Parking, PPB
- Community Plan Boundary
- City Boundary

