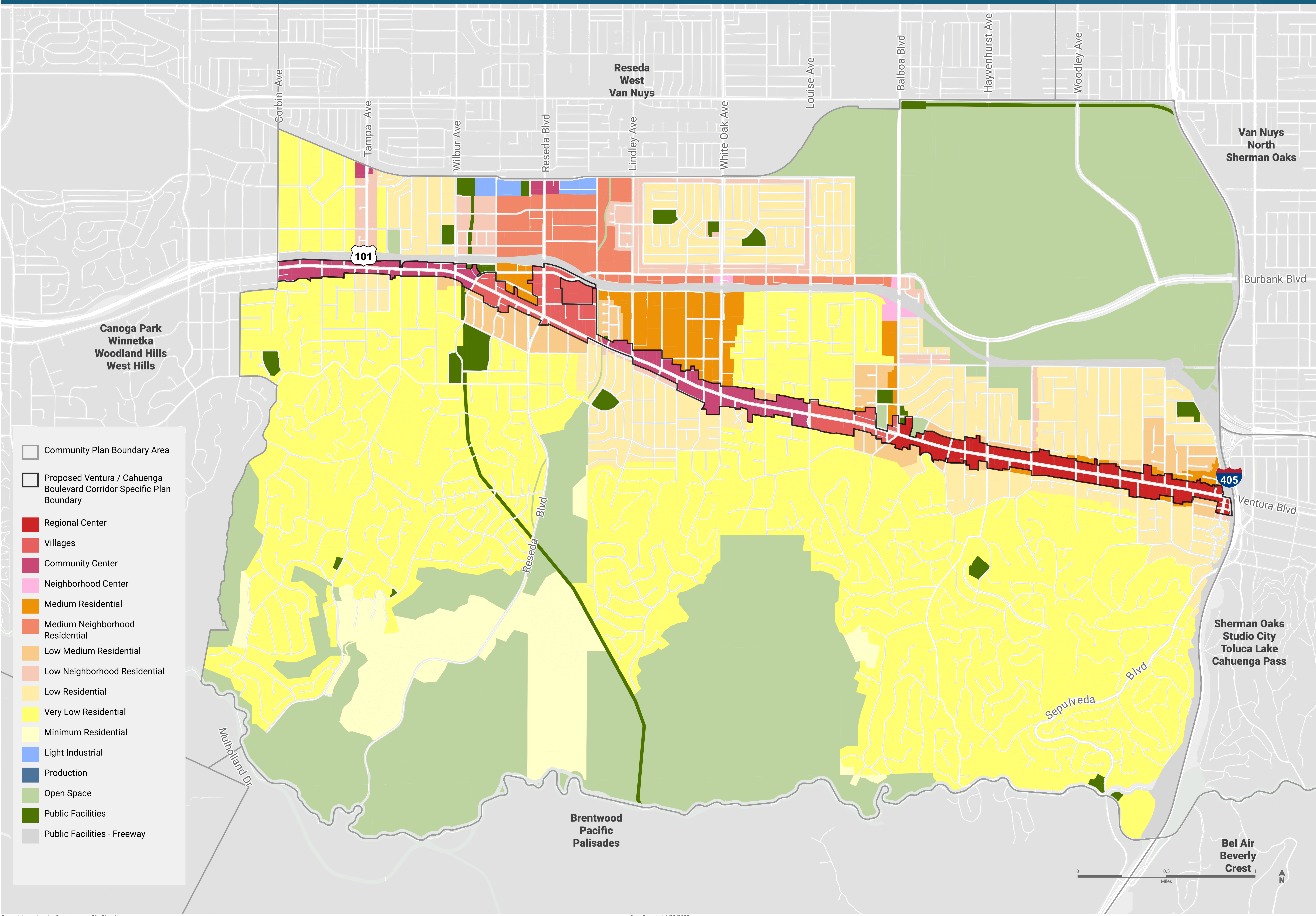


Encino - Tarzana Community Plans Area

Proposed General Land Use Designation - Spring 2022



- Community Plan Boundary Area
- Proposed Ventura / Cahuenga Boulevard Corridor Specific Plan Boundary
- Regional Center
- Villages
- Community Center
- Neighborhood Center
- Medium Residential
- Medium Neighborhood Residential
- Low Medium Residential
- Low Neighborhood Residential
- Low Residential
- Very Low Residential
- Minimum Residential
- Light Industrial
- Production
- Open Space
- Public Facilities
- Public Facilities - Freeway

