



UltraSystems
environmental • management • planning

CERTIFICATION STATEMENT

May 6, 2013

The attached Quarterly Site Monitoring Status Report for the Sunshine Canyon Landfill dated May 6, 2013, is the first 2013 Quarterly Report issued by UltraSystems. This report covers the monitoring period from January 1, 2013 through March 31, 2013 and is prepared for the City of Los Angeles Department of City Planning and the County of Los Angeles Department of Regional Planning.

I, James T. Aidukas, Project Manager for the Mitigation Monitoring Services of the Sunshine Canyon Landfill, certify that the statements in the Quarterly Report and the referenced monthly reports reflect the site conditions observed and compliance status noted by me and other qualified experts during the stated site visits.

Signed,

James T. Aidukas
Project Manager

Corporate Office – Orange County
16431 Scientific Way
Irvine, CA 92618-4355
Telephone: 949.788.4900
Facsimile: 949.788.4901

**Sunshine Canyon Landfill
Independent Monitor
Quarterly Site Monitoring Status Report
January 1, 2013 – March 31, 2013**

Prepared For:

City of Los Angeles Department of City Planning

And

County of Los Angeles Department of Regional Planning



Prepared By:



16431 Scientific Way
Irvine, California 92618

May 6, 2013

Contents

Quarterly Status Report.....	1
Site Visits During the Quarter.....	2
Definition of Terms.....	2
Status Summary	3
Compliant.....	3
Non-Compliant.....	3
Further Review Needed.....	3
Summary of Requested Documents.....	16
Conclusions	16

Sunshine Canyon Landfill Mitigation Monitoring – 2013 First Quarter Summary/ City
(see Excel spreadsheets)

Sunshine Canyon Landfill Mitigation Monitoring – 2013 First Quarter Summary/ County
(see Excel spreadsheets)

Appendices

Appendix I – Ia-If – Excel Summary Further Review Needed Comments Reference

Appendix II – Relevant Site Photos

Appendix III – Quarterly Site Visits

Attendees by Date and Monitoring Site Reports

Appendix IV – Meeting Logs

Appendix V – County Top Deck Elevations:

GPS Data Logs

GPS Elevation Map

GPS Elevation Data Table

Quarterly Status Report

The Quarterly Status Report is a compilation of the period's monthly Site Monitoring. After each site visit, the UltraSystems monitors who went to the Sunshine Canyon Landfill site each wrote a Mitigation Monitoring Site Report, updated the Mitigation Monitoring Summary Excel Tables for the City and County of Los Angeles noting any conditions and/or mitigation measures that need further review, and documented these areas in an appendix for that site visit date. Any issues that required immediate attention were reported to the appropriate staff at the City of Los Angeles Planning Department, the County of Los Angeles Department of Regional Planning, the County of Los Angeles Department of Public Works and the Sunshine Canyon Landfill Local Enforcement Agency (SCL-LEA).

The Sunshine Canyon Landfill City and County Summary Tables record each site visit and frequency of monitoring of specific conditions and/or mitigation measures, by date. When a condition and/or mitigation measure is monitored, a check mark is made under the date that it was monitored, and the status of being compliant with the conditions and/or mitigation measures' requirements observed during monitoring is recorded. Tasks with a yearly or non-ongoing monitoring frequency are denoted by a forward slash (/) in subsequent date columns. In the status column, the letter "C" is put next to the task if it is Compliant; the letters "NC" are noted if the task status is Non-Compliant; and the letters "FRN" are used if Further Review is Needed for meeting the requirements of the conditions and/or mitigation measures.

Under the Further Review Needed/ Comment column, observed conditions that have been noted as "FRN" in the status column refer to appendices which detail what was observed during the site monitoring. When the conditions and/or mitigation measures that were previously noted as "FRN" are fully compliant, an "R" is placed in the Resolved column and a "C" replaces the "FRN" in the status column. Also noted in the FRN-Comment column are those action items that would improve monitoring efficiency by having reports and documents readily available. These are summarized in the Compliant with Comments section of the monthly reports and the Summary of Requested Documents of the Quarterly Reports. The City and County Excel Spreadsheets record the site conditions observed during monitoring.

This Quarterly Report provides the City of Los Angeles Department of Planning and the County of Los Angeles Department of Regional Planning with a concise status of the Mitigation Measure Monitoring for the period of January 1, 2013 to March 31, 2013. It includes:

1. The City and County Mitigation Monitoring Summary Excel Tables for March. These tables record the areas of monitoring completed during the first quarter and the status of being compliant;
2. A Status Summary of Non-Compliant, Further Review Needed and Compliant with the requirements of the conditions and/or mitigation measures;

3. Relevant Site Photos showing site conditions of key areas of the landfill during the quarter;
4. Site visit attendees by date of site visit and the mitigation monitoring report for each monitor;
5. Meeting logs documenting any meetings with Republic Services staff and/or public agencies and the topics discussed, and;
6. Any site monitoring documenting site changes.

Site Visits During the Quarter

Six site visits were performed by UltraSystems during the January through March 2013 quarter in order to observe operational site activities and determine compliant status with conditions and/or mitigation measures. They were performed on January 16, 2013; February 1, 2013; February 13, 2013; February 27, 2013; March 13, 2013; and March 20, 2013. The previously discussed conditions and/or mitigation measures were tracked by each specialist who visited, and observations were documented. Site conditions were noted to be: Compliant, Non-Compliant, or Further Review Needed. If a Condition was found to be Non-Compliant or observed as having Further Review Needed, a reference was made to an appendix which details what was observed by the monitor.

Definition of Terms

Compliant is defined as complying with the City and County conditions and/or mitigation measures.

Non-compliant is defined as not complying with the City and County conditions and/or mitigation measures.

Further Review Needed is defined as implementing plans (agency-approved, if required) to fully comply with a condition and/or mitigation measure. Some plans, especially vegetation, require an extended time frame, and immediate compliance is not possible.

Further Review Needed/ Comments is defined as comments documenting site conditions observed during monitoring visits that are not fully compliant but action is being taken in order to obtain full compliance with conditions and/or mitigation measures. Recommendations from the monitor, as appropriate, and status from Republic Services (Republic) may also be given. Comments are also made for compliant conditions where the comment notes action that may be taken to provide documents to improve monitoring efficiency.

Resolved is defined as action taken or activities completed to fully comply with conditions and/or mitigation measures.

Status Summary

This section summarizes the conditions and/or mitigation measures that were monitored during the quarterly reporting period and their respective statuses. The Sunshine Canyon Mitigation Monitoring Spreadsheets for the City and County show the conditions and/or mitigation measures monitored during the quarter. Also included in this report are relevant photos in Appendix II.

Compliant

The majority of the conditions and/or mitigation measures monitored were observed to be compliant. There are City and County conditions which are compliant, but are noted as having corresponding comments that refer to the appendices. The Compliant with Comments section of the monthly reports provide a summary of these comments where monitoring efficiency would be improved by having reports and documents readily available. These are summarized in the Summary of Requested Documents in the Quarterly Report.

Non-Compliant

During UltraSystems' six site visits, no Non-Compliant conditions and/or mitigation measures were noted. Also, it must be understood that any monitoring related to landfill gas and odors are not part of the UltraSystems Monitoring Program at this time. These issues are currently being handled by a multi-agency team, which is led by the South Coast Air Quality Management District (SCAQMD).

Further Review Needed

The following conditions and/or mitigation measures were found not to be fully compliant, but were being worked on in order to obtain full compliance. This section summarizes the progress being made toward being fully compliant. When a condition and/or mitigation measure progresses from FRN to fully compliant, it is noted as Resolved in this section.

Q-C.10.c (City)

The operator shall submit, as part of its annual report, an evaluation of the feasibility of beneficial uses of the landfill gas collected at the site such as landfill-gas-to-energy.

Current Status/Comments – The gas-to-energy developer, DTE, had permitting issues which delayed the prior anticipated start of construction date. These permitting issues have been resolved and DTE is now proceeding with scheduling the construction of the gas-to-energy facility. A schedule indicating the new start of construction through completion and the start of energy sales should be developed and provided to the City and County Planning Departments.

M-4.1.1(6) (City)

Revegetation and erosion control procedures on all exposed slopes shall be implemented. The erosion controls to be implemented at the site shall include soil stabilization measures and revegetation in accordance with the approved revegetation plan as approved by the City Building and Safety Department. Interceptor ditches shall be designed to divert storm runoff to a sedimentation basin.

M-4.2.11(23) (City)

Disturbed areas shall be revegetated with an interim ground cover as specified in the proposed revegetation program. Excavation will proceed in a manner to reduce the amount of graded areas at any given time.

M-4.2.12 (City)

Site Erosion

c. A temporary vegetation cover shall be established on all slopes that are to remain inactive for a period longer than 180 days.

Biota – 4.42 (County)

Areas inactive for 180 days or longer will be planted with interim vegetation as approved by County biologist. Records will be kept to track fill areas of the site which are transferred to an inactive status so that appropriate dust control and revegetation measures can be implemented.

Biota - Revegetation - 44.A (County)

A. The Permittee shall apply a temporary hydroseed vegetation cover on any slope or other Landfill area that is projected to be inactive for a period greater than 180 days, as set forth in the IMP. The Permittee shall promptly notify the SCL-LEA and the Department of Public Works of any such slope or area.

Revegetation - 44.F/44.FCUP (County)

F. The Permittee shall employ an expert or experts, including an independent, qualified biologist, to satisfy this Condition No. 44. Soil sampling and laboratory analysis shall be conducted in all areas that are required to be re-vegetated before any re-vegetation occurs to identify chemical or physical soil properties that may adversely affect plant growth or establishment. Soil amendments and fertilizer recommendations shall be applied and plant materials selected, based on the above-referenced testing procedures and results. To the extent possible, plant types shall blend with species indigenous to the area, be drought tolerant, and be capable of rapid growth. The selected plants shall not include non-indigenous species that are likely to be invasive of adjacent natural areas.

Geology-1.13 (County)

Revegetation and erosion control of all exposed slopes will be an ongoing process. The erosion controls to be implemented at the site will include soil stabilization measures and revegetation in accordance with the approved Revegetation Program. The installation of interceptor ditches shall be designed for the diversion of storm runoff to sedimentation basins. Sediment traps will be used at points of runoff concentration along the perimeter of exposed slopes surfaces.

Condition: Approval of drainage plan. Retention of a consulting horticulturalist/Registered Professional Forester and an independent qualified biologist by the permittee for ongoing supervision of revegetation programs. Review and monitoring of planting programs by County Forester.

Geology-1.14 (County)

To prevent soil erosion on the face of the landfill, interim vegetation measures will be taken after placement of the temporary soil layer (even though the area may be disturbed by future filling operations). Vegetative cover will be placed as in the approved Revegetation Program.

Condition: Retention of a consulting horticulturalist/Registered Professional Forester and an independent qualified biologist by the permittee for ongoing supervision of revegetation programs. Review and monitoring of planting programs by County Forester.

Visual-10.08 (County)

Cover/Revegetation Requirements

The permittee shall comply with the following cover and re-vegetation requirements at the Landfill:

(1). The permittee shall apply a temporary hydroseed vegetation cover on any slope or other Landfill area that is projected to be inactive for a period greater than 180 days, as set forth in the IMP. The permittee shall promptly notify the County LEA and the Department of Public Works of any such slope or area;

Revegetation Requirements

(5) Notwithstanding the foregoing, the permittee shall not be bound by the previous provisions of this Condition No. 44, but instead by the requirements of the County LEA, so long as the Limits of Fill are not exceeded, if in consultation with the Department of Public Works, the County LEA determines that a different re-vegetation design or plan:

(1) would better protect public health and safety;

(2) would enable revegetation of the final slopes at least as well as shown in Exhibit "B" described in subsection D, above; and/or

(3) would be required because the minimum standards adopted by the CIWMB have been amended;

(6) the permittee shall employ an expert or experts, including an independent, qualified biologist, to satisfy this Condition No. 44. Soil sampling and laboratory analysis shall be conducted in all areas that are required to be re-vegetated before any re-vegetation occurs to identify chemical or physical soil properties that may adversely affect plant growth or establishment. Soil amendments and fertilizer recommendations shall be applied and plant materials selected, based on the above referenced testing procedures and results. To the extent possible, plant types shall blend with species indigenous to the area, be drought tolerant, and be capable of rapid growth. The selected plants shall not include nonindigenous species that are likely to be invasive of adjacent natural areas.

Current Status/Comments – At the start of the quarter on January 16, 2013, it was observed that the City North slopes that were hydroseeded with a new seed mix in the fourth quarter of 2012 had germinated and grown but was now starting to yellow. On February 1, 2013, more areas had

yellowed and germination of the seed had stopped. No new hydroseeding had occurred in this quarter. On March 13, 2013, it was observed that all of the vegetation from the hydroseeding of the City North slopes had yellowed and appeared to be dying. The revegetation relies on rainfall and the lack of rain this year could be the reason for the absence of total germination of the seed and the die-back of the grasses that did grow. The landfill's consulting biologist should evaluate the recent revegetation results, and provide a plan to revegetate for erosion control, interim cover, and temporary cover for inactive areas that comply with the mitigation measures. Also, a plan showing areas that will remain inactive for more than 180 days is required to comply with the mitigation measures.

The permanent natural hillside behind Flare 9 and the gas-to-energy site that was graded and had been hydroseeded last year has no established vegetation. A plan to revegetate these permanent slopes should be developed.

These documents should be submitted to the City Department of Building and Safety and the Department of City Planning and County Department of Regional Planning.

M-4.4.1(60) (City)

Venturan Coastal Sage Scrub

A detailed conceptual mitigation plan shall be prepared by the project proponent and contain specific information on planting, maintenance, and monitoring. A revegetation plan that includes Coastal sage scrub restoration can feasibly occur onsite. The implementation of this plan will provide onsite mitigation greater than 1:1 to offset the loss of coastal sage scrub.

M-4.4.1(61) (City)

Venturan Coastal Sage Scrub

Surface soils and seed source will be gathered from areas of the project site and spread within onsite mitigation areas.

Current Status/Comments – On January 16, 2013, the City Sage Mitigation Plans for Decks A, B and C were not yet finalized. On February 13, 2013 the Coastal Sage Mitigation Plans were finalized and were scheduled to start grading in February. City South Deck C will be done this year. City South Decks B and A will be done in the following two years (2014 and 2015.)

After evaluating the amount of topsoil stockpiled, Republic's consultant determined that the topsoil amount to be inadequate. The implementation of the plans was placed on hold until more topsoil could be moved to Deck C. On March 13, 2013 the Deck C sage mitigation area was observed and additional topsoil was moved to the deck for use in the mitigation. The construction was scheduled to start within days.

At the end of construction and planting for Deck C, a completion report should be provided to the Department of City Planning, County Department of Regional Planning and California Fish and Wildlife to show compliance with the conditions/ mitigation measures.

Biota – 4.27 (County)

Venturan Coastal Sage Scrub: A detailed conceptual mitigation plan shall be prepared by the permittee and shall contain specific information on planting, maintenance, and monitoring. A revegetation plan that includes coastal sage scrub restoration can feasibly occur on-site. The implementation of this plan will provide on-site mitigation greater than 1:1 to offset the loss of coastal sage scrub.

On January 16, 2013 the County sage mitigation site area had minimal sage established. On February 1, 2013 the County Coastal Sage Mitigation Area was observed to have poor coverage and more erosion due to recent rains. There was no change to the mitigation area for the rest of the quarter.

Republic's consulting biologist should evaluate options to implement in the County sage mitigation area. Soils type and erosion appeared to be the main cause for lack of sage revegetation. Employing erosion control methods, along with reseeding, could prove successful.

M-4.4.2(69) (City)*Offsite Mitigation Sites*

Potential candidate mitigation sites have been identified by the project proponent in conjunction with resource agencies for consideration to compensate for impacts on riparian and wetland resources as a result of project development. These sites include Bull Creek, Bee Canyon and East Canyon, which are located proximate to the project site. Prior to the development of any detailed mitigation plans and drawings, the final selection will be determined cooperatively by the CDFG, Corps, SWRCB, and other regulatory agencies in conjunction with the City and project proponent.

Current Status/Comments – As of February 1, 2013 there were still City of Los Angeles property transfer issues with the wetland and riparian mitigation at the Chatsworth Reservoir. The City is working on these issues and may have them resolved by August 2013. The Corps of Engineers has given an extension of time until the end of 2013 on the implementation of a mitigation program. A new schedule reflecting the current conditions should be developed and provided to the City and County Planning Departments.

Air Quality - 6.02 (County)

Dust Control will also be accomplished through the temporary revegetation of the landfill surface. A temporary revegetation of the landfill surface, A temporary vegetation cover will be established on all slopes that are to remain inactive for a period longer than 180 days. Specifications of temporary revegetation measures will be provided in the Revegetation Plan submitted to the County biologist for approval, the Closure and Postclosure Maintenance Plans, the Condition Use Permit, and Conditions of Project Approval.

Fugitive Dust - 45.F (County)*Inactive Areas Monitoring*

F. Inactive areas of exposed dirt that have been sealed shall be regularly monitored to determine the need for additional sealing and to prevent unauthorized access that might disturb the sealant. If

additional sealing treatment is required, the Permittee shall promptly apply such treatment to assure full control of the soil particles;

Current Status/Comments – During the January 16, 2013 site visit, blowing dust was observed coming from the bare soil areas adjacent to the Basin D North drainage and areas of the County top deck near Basin B. The gusty winds made dust control by water only not fully effective. On February 1, 2013 these bare soil areas were noted to have been treated with a soil sealant and no blowing dust was observed.

The need to apply soil sealant to bare soil areas during the windy season should be evaluated and soil sealant should be applied to those areas prior to the start of high wind events. All areas with no established vegetation should be continued to be monitored for fugitive dust, and soil sealant applied as needed.

M - 4.2.12 (25) (City) - Refuse Trucks (City)

The following measures will be applied to the project proponent's operated trucks that utilize the project site.

- c. Using a progressive fee schedule, the project proponent shall encourage trucks to carry full loads.*
- d. The project proponent shall encourage trucking to be performed during off-peak hours. This shall be accomplished through coordination of deliveries with the transfer stations that supply refuse, restrictions in the hours of operation, and/or a fee schedule that penalizes haul trucks arriving during peak congestion periods. This will reduce emissions by increasing truck speeds and eliminating prolonged idling in traffic.*

Landfill Capacity - 27 (County)

The Permittee shall charge its customers higher tipping fees for delivering partial truck loads to the Facility, and for delivering trucks to the Facility during peak commuting hours. Notwithstanding the preceding sentence, in lieu of charging higher tipping fees, the Permittee may implement some other program, as approved by the Department of Public Works, to discourage this type of activity by its customers.

Traffic/Circulation - 8.08 (County)

The permittee shall charge its customers higher tipping fees for delivering partial truck loads to the Facility, and for delivering trucks to the Facility during peak commuting hours. Notwithstanding the preceding sentence, in lieu of charging higher tipping fees, the permittee may implement some other program, as approved by the Department of Public Works, to discourage this type of activity by its customers.

Current Status/Comments – A program should be developed to charge differential fees for partially loaded trucks and trucks delivering waste to the site during peak commuting hours. This program should be provided to the City of Los Angeles Department of City Planning and the County of Los Angeles Department of Regional Planning.

Odor/Landfill Gas / 7.04 (County)

Risks associated with the gas collection and flaring system shall be mitigated through use of flexible piping, flame arrestors, sensors, and automatic shutoff controls. Numerous safety shutdown devices have been designed and installed into the flare station, including a telephone auto-dialer, to provide emergency notification. All gas extraction equipment, including gas condensate and propane tanks, shall be adequately secured to prevent damage during a seismic event. Inspections of the gas collection and flaring system shall be performed after ground-shaking from an earthquake, and necessary action shall be taken to correct any potential problems.

Current Status/Comments – On January 16, 2013 the piping brackets on Flare 1 compressor skid were missing bolts to securely hold down the piping in the event of an earthquake. On February 13, 2013 the Flare 8 inlet knockout vessel pressure relief valve discharge pipe was noted to have no weep hole and could accumulate water on the relief valve outlet. On February 27, 2013 a significant amount of stockpiled soil was removed from the County Top Deck. It was also noted that the County area near the Temporary Flare, which normally had an ambient gas odor, had no odor.

All flare skids should have piping hold-down brackets checked in order to confirm that compressor skid piping will meet earthquake requirements. A weep hole should be drilled in the Flare 8 inlet vessel pressure relief valve discharge pipe to drain any water that may accumulate. The change in the ambient odor in the area near the Temporary Flare should be investigated to evaluate if there is a correlation between stockpile depth and gas odors at the temporary flare location.

M-4.2.13(33) (City) (Resolved)

If an odor problem should develop, appropriate control measures shall be implemented. These measures include the application of daily cover material or more frequent application of the cover material to seal the landfill surface, or adjustments to the wells, equipment, and operation of the LFG collection and recovery system.

Odor/Landfill Gas 7.06 (County)

If an odor problem should develop, appropriate control measures shall be implemented. These measures include the application of daily cover material or more frequent application of the cover material to seal the landfill surface, or adjustments to the wells, equipment, and operation of the LFG collection and recovery system.

Current Status/Comments – As of December 2012, the discharge flange on Blower C at Flare 8 was missing a gasket and was leaking gas. This leaking flange was noted to have been repaired as of January 16, 2013, and any gas leakage was resolved.

M-4.3.1(46) (City)

A preventive maintenance program would be implemented by the project proponent, including inspection of facility equipment, systems, and stormwater management devices to detect conditions that may cause breakdowns or failures resulting in discharge of materials into stormwater. This program applies to the onsite drainage ditches; rip-rap; berms and dikes; dust control; silt fences; diversion grading; and pavement surfaces. Each system and piece of stationary equipment would be

inspected monthly. Procedures for inspection would vary, due to the piece of equipment or system. However, the major elements of the inspection program would include checking for cracks or structural failures, inspecting parts or pieces of equipment nonfunctioning, checking for the degradation or deterioration of operating units, and investigating the need for cleaning or emptying units. A summary report of these monitoring results and the corrective actions taken will be disseminated in each newsletter with a more detailed report on the web site and in the annual report.

Surface Water 2.15 (County)

Surface Water Preventive Maintenance Program

A preventive maintenance program will be implemented by the permittee, including inspection of facility equipment, systems, and stormwater management devices to detect conditions that may cause breakdowns or failures resulting in discharge of materials into stormwater. This program applies to the onsite drainage ditches, rip-rap, berms and dikes, dust control, silt fences, diversion grading, and pavement surfaces. Each system and piece of equipment will be inspected monthly.

Procedures for inspection would vary based on the piece of equipment or system. However, the major elements of the inspection program will include checking for cracks or structural failures, inspecting parts or pieces of equipment nonfunctioning, checking for the degradation or deterioration of operating units, and investigating the need for cleaning or emptying units.

Current Status/Comments – In January, Basin A had sediment and standing water from recent rain events. The section of the westside channel bottom that was broken had worsened due to uplifting. In the same area, the broken channel sidewalls had worsened and a new horizontal crack was observed in the sidewalls. The Basin D North drainage HDPE lined area was repaired and the drainage channel was no longer blocked by the HDPE material. Basin B was dry and had 4-6 inches of sediment around the outlet risers. The terminal basin had some water with approximately 3 feet or more of sediment at the outlet risers. The terminal basin exterior concrete sidewall cracks were worsening.

On February 1, 2013 there was no change in conditions at Basin A, B, D and the Terminal Basin. There were no repairs made to the westside drainage as of this date. On the February 27, 2013 site visit, Basin A had fallen tree debris in the center of the basin. There was minor sediment and standing water near the outlet risers. The westside drainage ditch still had a section of the bottom cracked and uplifting. A section of the sidewalls was still spalling and a horizontal crack in the sidewalls was observed. No repairs have been made since these conditions were first noted. The Basin D north drainage ditch had HDPE liner material partially blocking the flow. The eastside drainage ditch leading to Basin B had soil sloughing from the hillside into the ditch. The terminal basin exterior concrete sidewall cracks were worsening. On the March 13, 2013 site visit, Basin A was dry with approximately 3-4 inches of sediment near the outlet risers. Landslide material was observed in the middle of the basin. The native drainage area in back of the basin was observed to be in good condition. The inlet pipes from the westside drainage were partially blocked with sediment and tumbleweeds. The Basin D North drainage had areas of the drainage ditch's flow being blocked by the liner material that was windblown and clumped. Basin B was dry with 2-3 inches of sediment near the outlet standpipes. Windblown material was observed in the back

corners near the native hillsides. The terminal basin had standing water and approximately 5-6 feet of sediment at the outlet standpipes. Paper and plastic debris was also observed at the eastside of the exterior wall of the basin.

A preventative maintenance program with scheduled maintenance tasks for maintaining the drainage systems should be developed and implemented to address observed conditions. This program should be sent to the Los Angeles Department of City Planning and the County Department of Regional Planning.

Biota – 4.10 (County)

The permittee shall comply with all terms and Conditions of Oak Tree Permit No. 86-312-(5). The permittee is authorized to remove oak trees within the project areas as necessary to conduct landfill operations authorized by this grant and subject to the requirements of Part VII of the Implementation and Monitoring Program attached to Oak Tree Permit 86-312-(5). Prior to approving any excavation of more than five acres containing significant stands of oak and/or Douglas fir trees, the Director of Public Works shall confer with the Los Angeles County Forester and Fire Warden.

Current Status/Comments – On February 13, 2013, the Big Cone Fir mitigation site was observed and tree growth was noted to be hampered by the chicken wire protective screens, and the overall health of some of the mitigation trees was poor. The removal and/or replacement of these screens should be evaluated by Republic's biologist along with procedures to improve the health of the trees.

Visual 10.11 (County)

The permittee's on-site Litter Control Program will include continuous patrol of the access road and working face during hours of operations and mobilize clean-up crews on a regular basis for litter pick-up along designated public access routes, O'Melveny Park and the adjacent neighborhood.

M-4.9.3 (109) (City)

On-a-once a week basis, or as needed, the landfill operator shall mobilize cleanup crews to provide litter pickup services within the O'Melveny Park area, along Balboa Boulevard and San Fernando Road, and in other residential areas located in proximity to the landfill, that may be affected by offsite litter migration. On a daily basis, the cleanup crews shall inspect the surrounding area to assess if more frequent cleanups are required. Fences outside of the landfill perimeter may be visible to the surrounding community.

Litter Control – 46.A-D (County)

The Permittee shall adopt a program that uses the most effective available methods and technology to prevent waste that has entered an area under the Permittee's control from escaping the area in the form of litter. Notwithstanding any other provision of this Condition 46, or of this grant, the Permittee shall cease accepting incoming waste during high wind conditions if, despite the methods and technology used, waste cannot be confined to areas under the Permittee's control.

The Permittee's litter control program shall include the following requirements, unless the County LEA requires otherwise:

A. Facility personnel shall continuously patrol the access road to the Landfill scales during the Landfill's hours of operation and remove any litter found during the patrol;

B. Loads of Solid Waste that are improperly covered or contained and which may create significant litter shall be immediately detained, and if practicable, correctly covered or contained prior to proceeding to the Working Face. If such a remedial measure cannot be taken, the load shall proceed to the Working Face under escort;

C. All debris found on or along the entrance to the Landfill and/or Working Face access roads shall be immediately removed; and

D. At every active Working Face area, the permittee shall install a primary portable litter fence eight feet in height, and also a secondary fence four feet in height behind the primary fence when wind conditions dictate the need for a secondary fence. The Permittee shall employ any-and all additional measures as necessary to control litter. On windy days, and when the fences are not sufficient, the Working Face shall be located within areas of minimal wind exposure or shall be closed, if so required by the County LEA. The County LEA may require additional measures deemed necessary to effectively control litter.

Current Status/Comments – On the January 16, 2013 site monitoring visit, Sierra Highway near the I-14 overpass was observed to be cleaned and free of illegal dumping and windblown litter. However, San Fernando Road south and Old Sepulveda Road south to the Roxford onramp had windblown litter along the roadway. This area was cleaned and litter was removed by the next monitoring visit (February 1). However, on February 27, 2013, Sierra highway near the I-14 overpass was observed to have litter on the east side of the road. Also, on March 13, 2013, paper and debris were noted between the San Fernando Road block wall and the exterior wall of the terminal basin. Blown debris was noted on the eastside of Sierra Highway near the I-14 overpass. The westside of Sierra Highway was clean.

A schedule change in the frequency of the routine litter removal should be evaluated due to the heavy traffic on these two roads.

M-4.1.1(4) (City)

Grading that allows for construction of ancillary facilities outside of the landfill footprint or that has the potential to impact property beyond the boundary of the landfill shall be approved by the Department of Building and Safety.

Current Status/Comments – The temporary and final access road realignment design drawings for the grading of areas outside of the landfill footprint should be submitted to the City Department of Building and Safety for approval. Grading design drawings for the temporary and ultimate realignment of the access road should be provided to the City of Los Angeles Department of Building and Safety and the City and County Planning Departments.

M-4.1.1(5) (City)

All grading activities shall be in compliance with specific requirements provided in a comprehensive geotechnical report prepared specifically for the proposed project, including provisions for excavation approved by the Department of Building and Safety, City Engineer, City LEA and other Responsible Agencies.

M-4.1.2(8) (City)

When excavating for the landfill operation, if a landslide is encountered, all material constituting that landslide shall be removed. Excess landslide material not used immediately for cover material shall be stockpiled onsite for future use. If necessary, the landslide area shall be excavated a portion at a time to avoid opening large sections of potentially unstable material. A buffer area shall be maintained between the active landfill cells receiving waste and areas under excavation to remove overburden soils, landslide debris, and weathered bedrock. A qualified geologist shall delineate the limits of the landslide during excavation. Landslide removal shall not commence when the ground is saturated, unless removed under the direction and specifications of a certified engineering geologist.

M-4.1.5(12) (City)

Geologic Hazards - Liquefaction

Alluvium in the canyon bottoms beneath the footprint of the waste containment system and beneath ancillary structures shall be excavated and, if necessary, replaced with compacted structural fill during construction. A qualified geologist shall be onsite during construction activities to observe removal and replacement of alluvium and verify that all alluvium within the landfill footprint has been removed prior to placement of any compacted fill or construction of any containment system elements.

M-4.1.5(13) (City)

The landfill facility shall be designed and constructed in accordance with RCRA, Subtitle D, 40 CFR, Part 258, Subpart B, § 258.14 (Unstable Areas) so that there would be no liquefaction related impacts.

M-4.1.5(14) (City)

The landfill facility shall be designed and constructed in accordance with CCR, Title 23, Division 3, Chapter 15, Article 3, § 2530(d) (Classification and Siting Criteria), which requires that "all containment structures at waste management units shall have a foundation or base capable of providing support for the structures and capable of withstanding hydraulic pressure gradients to prevent failure due to settlement, compression, or uplift as certified by a registered civil engineer or certified engineering geologist."

M-4.1.6(15) (City)

Final cut and fill slopes shall have an overall slope gradient no steeper than 1.5H:1V.

Geology-1.05 (County)

During excavation, any unsuitable material encountered below the base grade for the landfill, including alluvium, organic material, and landslide debris, shall be removed. Engineered compacted fill shall be placed in those areas to restore the base grade for liner system construction. Excess

material not used immediately for cover material shall be stockpiled on-site for future use. The unsuitable material shall be excavated, a portion at a time, as the working area of the landfill progresses to avoid opening large sections of potentially unstable material. A buffer area (i.e. 50 -100 horizontal feet or as deemed appropriate to maintain safe working conditions) shall be used between the active cells receiving waste and areas under excavation. In accordance with CCR Title 14, a certified engineering geologist shall delineate the limits of the unsuitable material and associated "backcuts" to facilitate removals during excavation. Removal shall not occur during the rainy season (October 1 - April 30) or when the ground is saturated, unless performed under the direction and specifications of a certified engineering geologist.

Geology-1.07 (County)

All grading activities shall be in compliance with specific requirements provided in a comprehensive geotechnical report prepared specifically for the proposed Project, including provisions for excavation approved by the County Department of Public Works, the County Local Enforcement Agency (LEA) and other Responsible Agencies.

Geology-1.18 (County)

Alluvium in the canyon bottoms beneath the footprint of the waste containment system and beneath ancillary structures shall be excavated and, if necessary, replaced with compacted structural fill during construction. A qualified geologist shall be on-site during construction activities to observe removal and replacement of alluvium and to verify that all alluvium within the landfill footprint has been removed prior to placement of any compacted fill or construction of any containment system elements.

Current Status/Comments – As of February 1, 2013, Republic was evaluating options to stabilize an old landslide in the development of CC3A Part II. It was the current understanding that the remedial action may be to not excavate and remove all native material, but instead to place a stabilizing fill of up to 40 feet thick at the toe of the landslide. Republic was having their engineering firm evaluate and develop the preferred engineering option. As of March 20, 2013, the final design approach was not finalized nor submitted to the RWQCB for approval.

The final design reports to stabilize the old landslide in the development of CC3A Part II should be submitted to the City Department of Building and Safety and the County Department of Public Works for review and compliance with the intent of City and County conditions and/or mitigation measures. Copies should also be provided to the Los Angeles Department of City Planning and the County Department of Regional Planning.

M-4.9.4 (125) (City)

The landfill operator shall maintain perimeter fencing in and around the site in accordance with CCR, Title 14, § 17658 to discourage illegal entry to the landfill. Where existing topography conditions create an effective barrier, no perimeter fencing shall be installed. Entrance and access gates shall remain locked when the landfill facility is not in operation. All existing perimeter fencing shall be inspected on a routine basis by the landfill operator, and necessary repairs shall be made to ensure a

continued deterrent for unauthorized entry to the project site. Additionally, the landfill operator shall maintain posted "no trespassing" signage at the exterior perimeter fencing nearest the project site entrance.

Current Status/Comments – The oil field 100 acre buffer area south entrance gate was observed to be unlocked during the February 27, 2013 and March 20, 2013 site visits. This access gate should be locked.

M-4.14.1 (147) (City)

The project proponent shall maintain and expand existing onsite fire response capabilities by using heavy operating equipment and readily available fire-extinguishing equipment. A 200-foot long, 1½-inch-diameter fire hose shall be available on water trucks for firefighting at the landfill working face area. If necessary, earth moving equipment shall be used to control fires by smothering fires with dirt.

Fire Service-12.02 (County)

The permittee will maintain and expand existing on-site fire response capabilities through use of heavy operating equipment and readily available fire extinguishing equipment. A 200-foot long, 1-1/2 inch diameter fire hose will be available on water trucks for fire-fighting at the working area. In addition, earth moving equipment will be available for controlling fires by smothering fires with dirt. Access roads will be constructed and maintained around the working area of the landfill to provide emergency access for firefighting equipment.

Fire Service-12.03 (County)

The permittee shall maintain on-site fire response capabilities, construct access roads, provide water tanks, water mains, fire hydrants and fire flows and perform brush clearance to the satisfaction of the County Forester and Fire Warden. The landfill will comply with all applicable County codes and ordinances which delineated the requirements for fire access, water mains, fire flows and fire hydrants, specifically defined by the County Fire Department. New construction of water tanks, water mains and fire hydrants will be completed to meet the fire flow requirements of the Fire Department.

Current Status/Comments – During the February 27, 2013 site visit, one water truck was observed not having a fire hose. All water trucks should be equipped with fire hoses so that fire response capabilities are fully available.

Safety – 16.04 (County)

Appropriate inspection checklists shall be developed, used, and maintained to accurately reflect various exposures in different work areas. Daily observation of the workplace environment by permittee's employees, supervisors, managers, and safety director shall occur. Discrepancies shall be reported. Records of inspections, deficiencies, and corrective measures shall be maintained in the safety/maintenance offices.

Current Status/Comments – During the February 27, 2013 site visit, a makeshift ladder using pallets was observed in the westside drainage ditch. These pallets should be removed and replaced with a ladder if one is needed.

Summary of Requested Documents

The following documents, reports and plans are recommended to be made available at the site for agency and monitor review in order to assist in streamlining the monitoring process.

- a) Design report for the Leachate Collection and Treatment Facility (LCTF)
- b) Current Fill Sequence Plan
- c) A plan showing areas inactive for 180 days or longer with records tracking fill areas and interim reclamation and revegetation, including the timing of proposed work, as well as a plan showing current and projected areas to be within ten feet of the limits of fill
- d) Maps showing areas that are at final elevation and bench ditches that will connect to drainage ditches to protect against natural surface runoff
- e) Current erosion control plans
- f) Site drainage plans, including surface and underdrains systems with complementing revegetation plan
- g) A plan/ report of the liner interceptor ditches design/ installation to ensure that surface runoff is appropriately conveyed to the existing flood control channel directly east of the project site entrance
- h) Comprehensive geotechnical reports
- i) A preventative maintenance plan and summary of monitoring reports of inspections of facility equipment, systems and stormwater management devices to detect conditions that may cause breakdowns or failures resulting in discharge of materials into stormwater

Conclusions

In this reporting period, UltraSystems has monitored the conditions and/or mitigation measures for the City/County, as shown on the Mitigation Monitoring Summary Excel spreadsheets.

As shown by the Non-Compliant and Further Review Needed sections above, the landfill is actively working toward being fully compliant with conditions and/or mitigation measures, with no non-compliant conditions observed. Furthermore, monitoring of the tasks on these Excel spreadsheets

track progress toward being fully compliant. Notwithstanding the above, air quality issues are not being actively monitored by UltraSystems, and may not be compliant.

The 2013 First Quarter Mitigation Monitoring Summary Excel spreadsheets track the progress and completion of tasks as they were accomplished during this quarterly period.

Sunshine Canyon Landfill First Quarter 2013 Mitigation Monitoring Summary / City – See Excel Spreadsheet

Sunshine Canyon Landfill Mitigation Monitoring Summary - (City 1-01-2013 through 3-31-2013)

Line #	Reference #	Mitigation #	City Mitigation Measures and Conditions Monitored by Discipline	Monitoring Frequency	1/16/2013	Status*	Further Review Needed/Comments**	Resolved*	2/1/2013	Status*	Further Review Needed/Comments**	Resolved*	2/13/2013	Status*	Further Review Needed/Comments**	Resolved*	2/27/2013	Status*	Further Review Needed/Comments**	Resolved*	3/13/2013	Status*	Further Review Needed/Comments**	Resolved*	3/20/2013	Status*	Further Review Needed/Comments**	Resolved*
1	Project Manager																											
2																												
3																												
4	Q - A.3.		Definitions	info	/				/				/				/				/				/			
5	Q - A.6.		Submit Annual Reports	June yearly	/				/				/				/				/				/			
6	Q - A.10.		Provision of Fees	yearly	/				/				/				/				/				/			
7	Q - B.1.		Permitted/Prohibited Landfill Uses	yearly	/				/				/				/				/				/			
8	Q - B.2		Approval of Landfill	ongoing	✓	C	NONE		✓	C	NONE		✓	C	NONE		✓	C	NONE		✓	C	NONE		✓	C	NONE	
9	Q - B.2.c.		Ancillary Uses and Facilities	ongoing	✓	C	NONE		✓	C	NONE		✓	C	NONE		✓	C	NONE		✓	C	NONE		✓	C	NONE	
10			Ancillary Uses and Facilities																									
11	Q - B.2.d (3)		10 Year Phase Review	2015	/				/				/				/				/				/			
12			10 Year Phase Review																									
13	Q - B.4.d.		Inert/Exempt Materials	info	/				/				/				/				/				/			
14	Q - B.5.a.		Prohibited Waste	info	/				/				/				/				/				/			
15	Q - B.6.		Waste Diversion	ongoing	✓	C	NONE		✓	C	NONE		✓	C	NONE		✓	C	NONE		✓	C	NONE					
16	Q - C.3.g.		Paved Access Roads	ongoing	✓	C	NONE		✓	C	NONE		✓	C	NONE		✓	C	NONE		✓	C	NONE					
17	Q - C.3.h.		Surfacing of Access Roads	ongoing	✓	C	NONE		✓	C	NONE		✓	C	NONE		✓	C	NONE		✓	C	NONE					

* C = Compliant, NC = Non-Compliant, FRN = Further Review Needed, R = Resolved

** See Appendix I for Comments

Checkmark = Condition or mitigation was monitored

/ = Yearly or non-ongoing monitoring frequency

Sunshine Canyon Landfill Mitigation Monitoring Summary - (City 1-01-2013 through 3-31-2013)

Line #	Reference #	Mitigation #	City Mitigation Measures and Conditions Monitored by Discipline	Monitoring Frequency	1/16/2013	Status*	Further Review Needed/Comments**	Resolved*	2/1/2013	Status*	Further Review Needed/Comments**	Resolved*	2/13/2013	Status*	Further Review Needed/Comments**	Resolved*	2/27/2013	Status*	Further Review Needed/Comments**	Resolved*	3/13/2013	Status*	Further Review Needed/Comments**	Resolved*	3/20/2013	Status*	Further Review Needed/Comments**	Resolved*
18	Q - C.5.		Graffiti Removal and Deterrence	ongoing	✓	C	NONE		✓	C	NONE		✓	C	NONE		✓	C	NONE		✓	C	NONE					
19	Q - C.10.c.		Evaluation of Beneficial Gas Usage	June yearly	✓	C	NONE		✓	C	NONE		✓	C	NONE		✓	C	NONE						✓	C	I-f	
20	Q - C.10.d. (1)		Alternative Fuel Vehicles	status																								
21	Q - C.10.d. (2)		Alternative Fuel Refuse Collection Trucks	status																								
22	Q - C.12.a.		Technical Advisory Committee	info	/				/				/				/				/				/			
23	Q - C.12.c.		Contract for Mitigation Monitoring	info	/				/				/				/				/				/			
24	Q - C.12.c.		Contract for Mitigation Monitoring-5 years	info	/				/				/				/				/				/			
25																												
26	T - 4		Fire Plan	status	✓	C	NONE		✓	C	NONE		✓	C	NONE		✓	C	NONE									
27	T - 5.j.		Trip Diversion	status	✓	C	NONE		✓	C	NONE		✓	C	NONE		✓	C	NONE									
28	T - 6		Satisfactory Street Lighting	status	/				/				/				/				/				/			
29																												
30	M - 4.1.1	7	Reabandonment Procedures	status	✓	C	NONE		✓	C	NONE		✓	C	NONE		✓	C	NONE									
31	M - 4.1.4	11	Post-5.0 Earthquake Analysis	upon event	/	NA	NONE		/	NA	NONE		/	NA	NONE		/	NA	NONE		/	NA	NONE		/	NA	NONE	
32	M - 4.2.12	27	Heavy Equipment Operations	ongoing	✓	C	NONE		✓	C	NONE		✓	C	NONE		✓	C	NONE									
33	M - 4.2.12		Heavy Equipment Operations	ongoing	✓	C	NONE		✓	C	NONE		✓	C	NONE		✓	C	NONE									

* C = Compliant, NC = Non-Compliant, FRN = Further Review Needed, R = Resolved

** See Appendix I for Comments

Checkmark = Condition or mitigation was monitored

/ = Yearly or non-ongoing monitoring frequency

Sunshine Canyon Landfill Mitigation Monitoring Summary - (City 1-01-2013 through 3-31-2013)

Line #	Reference #	Mitigation #	City Mitigation Measures and Conditions Monitored by Discipline	Monitoring Frequency	1/16/2013	Status*	Further Review Needed/Comments**	Resolved*	2/1/2013	Status*	Further Review Needed/Comments**	Resolved*	2/13/2013	Status*	Further Review Needed/Comments**	Resolved*	2/27/2013	Status*	Further Review Needed/Comments**	Resolved*	3/13/2013	Status*	Further Review Needed/Comments**	Resolved*	3/20/2013	Status*	Further Review Needed/Comments**	Resolved*
34	M - 4.2.12	28	Site Erosion-Cover	ongoing	✓	C	NONE		✓	C	NONE		✓	C	NONE		✓	C	NONE		✓	C	NONE		✓	C	NONE	
35	M - 4.2.12		Site Erosion-Cell Height	ongoing	✓	C	NONE		✓	C	NONE		✓	C	NONE		✓	C	NONE		✓	C	NONE					
36	M - 4.2.12		Site Erosion-Sealant	ongoing	✓	C	NONE		✓	C	NONE		✓	C	NONE		✓	C	NONE		✓	C	NONE					
37	M - 4.2.13	29	LFG Control Measures	ongoing	/		I-a		/		I-b		/		I-c		/		I-d		/		I-e		/		I-f	
38	M - 4.2.13	30	Operational Odor Control Techniques	ongoing	/		I-a		/		I-b		/		I-c		/		I-d		/		I-e		/		I-f	
39	M - 4.2.13	31	Solid Waste Compaction	ongoing	✓	C	NONE		✓	C	NONE		✓	C	NONE		✓	C	NONE									
40	M - 4.2.13	32	LFG Collection and Recovery System	ongoing	/		I-a		/		I-b		/		I-c		/		I-d		/		I-e		/		I-f	
41	M - 4.2.13	33	Odor Control Measures	ongoing	✓	C	I-a	R	/		I-b		/		I-c		✓	C	I-d		✓	C	I-e					
42	M - 4.2.13	34	Odor/LFG Monitoring	ongoing	/		I-a		/		I-b		/		I-c		/		I-d		/		I-e		/		I-f	
43			Periodic LFG Monitoring		/		I-a		/		I-b		/		I-c		/		I-d		/		I-e		/		I-f	
44	M - 4.3.2	52	LFG Migration Mitigation	ongoing	/	NA			/	NA			/	NA			/	NA			/	NA						
45	M - 4.3.2	57	Dust Control Water	ongoing	✓	C	NONE		✓	C	NONE		✓	C	NONE		✓	C	NONE									
46	M - 4.4.2	69	Offsite Mitigation Sites	status					✓	FRN	I-b																	
47	M - 4.4.2	70	Purchasing Wetland Credit	status	/				/				/				/				/				/			
48	M - 4.4.2	71	Funding-Invasive Species Eradication Program	status	/				/				/				/				/				/			
49	M - 4.6	85	Site Lighting	status	✓	C	NONE		✓	C	NONE		✓	C	NONE		✓	C	NONE		✓	C	NONE		✓	C	NONE	

* C = Compliant, NC = Non-Compliant, FRN = Further Review Needed, R = Resolved

** See Appendix I for Comments

Checkmark = Condition or mitigation was monitored

/ = Yearly or non-ongoing monitoring frequency

Sunshine Canyon Landfill Mitigation Monitoring Summary - (City 1-01-2013 through 3-31-2013)

Line #	Reference #	Mitigation #	City Mitigation Measures and Conditions Monitored by Discipline	Monitoring Frequency	1/16/2013	Status*	Further Review Needed/Comments**	Resolved*	2/1/2013	Status*	Further Review Needed/Comments**	Resolved*	2/13/2013	Status*	Further Review Needed/Comments**	Resolved*	2/27/2013	Status*	Further Review Needed/Comments**	Resolved*	3/13/2013	Status*	Further Review Needed/Comments**	Resolved*	3/20/2013	Status*	Further Review Needed/Comments**	Resolved*
50	M - 4.7.1	86	Open Space Buffer Area	ongoing	✓	C	NONE		✓	C	NONE		✓	C	NONE		✓	C	NONE									
51	M - 4.9.3	106	Litter Minimization	ongoing	✓	C	NONE		✓	C	NONE		✓	C	NONE		✓	C	NONE		✓	C	NONE					
52	M - 4.9.3	107	Litter/Debris Containment	ongoing	✓	C	NONE		✓	C	NONE		✓	C	NONE		✓	C	NONE		✓	C	NONE					
53	M - 4.9.3	108	Vehicle Tarping Requirements	ongoing	✓	C	NONE		✓	C	NONE		✓	C	NONE		✓	C	NONE		✓	C	NONE					
54	M - 4.9.3	109	Periodic Offsite Litter Pickup	ongoing	✓	FRN	I-a		✓	C	NONE		✓	C	NONE		✓	C	NONE		✓	FRN	I-e					
55	M - 4.9.3	110	Illegal Dumping Activities	ongoing	✓	C	NONE		✓	C	NONE		✓	C	NONE		✓	C	NONE		✓	C	NONE					
56	M - 4.9.3	111	Radio Dispatch Litter Control	ongoing	✓	C	NONE		✓	C	NONE		✓	C	NONE		✓	C	NONE		✓	C	NONE					
57	M - 4.9.3	112	Litter Control	ongoing	✓	C	NONE		✓	C	NONE		✓	C	NONE		✓	C	NONE		✓	C	NONE					
58	M - 4.9.5	127	Address Concerns of Citizens' Advisory Committee	ongoing	/				/				/				/				/							
59	M - 4.9.6	128	Landfill Gas/Collection System-Unsafe Methane Levels	ongoing	✓	C	NONE		✓	C	NONE		✓	C	NONE		✓	C	NONE		✓	C	NONE					
60	M - 4.9.6	129	Landfill Gas/Collection System-Detection/Training	ongoing																								
61	M - 4.9.6	130	Landfill Gas/Collection System-Risk Mitigation	ongoing	✓	C	NONE		✓	C	NONE		✓	C	NONE		✓	C	NONE									
62	M - 4.16.4	176	Reclaimed Water	status	/				/				/				/				/				/			
63	M - 4.16.4	177	Water Conservation	ongoing	✓	C	NONE		✓	C	NONE		✓	C	NONE		✓	C	NONE		✓	C	NONE					
64																												
82	Civil & Geotechnical Engineer																											

* C = Compliant, NC = Non-Compliant, FRN = Further Review Needed, R = Resolved

** See Appendix I for Comments

Checkmark = Condition or mitigation was monitored

/ = Yearly or non-ongoing monitoring frequency

Sunshine Canyon Landfill Mitigation Monitoring Summary - (City 1-01-2013 through 3-31-2013)

Line #	Reference #	Mitigation #	City Mitigation Measures and Conditions Monitored by Discipline	Monitoring Frequency	1/16/2013	Status*	Further Review Needed/Comments**	Resolved*	2/11/2013	Status*	Further Review Needed/Comments**	Resolved*	2/13/2013	Status*	Further Review Needed/Comments**	Resolved*	2/27/2013	Status*	Further Review Needed/Comments**	Resolved*	3/13/2013	Status*	Further Review Needed/Comments**	Resolved*	3/20/2013	Status*	Further Review Needed/Comments**	Resolved*
83																												
84																												
85	M - 4.1.1	2	Grading Outside of Conceptual Grading Plan Area	ongoing	✓	C	NONE		✓	C	NONE		✓	C	NONE		✓	C	NONE		✓	C	NONE					
86	M - 4.1.1	3	Unsuitable Material Removal/Buffer Zones	ongoing																								
87	M - 4.1.1	4	Grading Outside of Landfill Footprint	ongoing	✓	C	NONE		✓	C	NONE						✓	FRN	I-d						✓	FRN	I-f	
88	M - 4.1.1	5	Grading Activity Compliance	ongoing					✓	FRN	I-b						✓	FRN	I-d						✓	FRN	I-f	
89	M - 4.1.2	8	Landslide Guidelines	ongoing					✓	FRN	I-b						✓	FRN	I-d						✓	FRN	I-f	
90	M - 4.1.2	9	Soil Stabilization	ongoing					✓	C	NONE						✓	C	NONE									
91	M - 4.1.4	10	Landfill Design	ongoing					✓	C	NONE						✓	C	NONE									
92	M - 4.1.4	11	Earthquake Operations Checklist	upon event	/	NA	NONE		/	NA	NONE		/	NA	NONE		/	NA	NONE						/	NA	NONE	
93	M - 4.1.5	12	Geologic Hazards - Liquefaction	ongoing					✓	FRN	I-b						✓	FRN	I-d						✓	FRN	I-f	
94	M - 4.1.5	13	Design/Construction- Liquefaction	ongoing					✓	FRN	I-b						✓	FRN	I-d									
95	M - 4.1.5	14	Design/Construction- Containment Structures	ongoing					✓	FRN	I-b						✓	FRN	I-d									
96	M - 4.1.6	15	Refuse Slope Gradients	ongoing	✓	C	NONE		✓	C	NONE						✓	C	NONE						✓	NA	I-f	
97	M - 4.1.6	16	Cut and Fill Slope Gradients	ongoing	✓	C	NONE		✓	C	NONE						✓	C	NONE									
98	M - 4.1.6	17	Final Slope Factors of Safety	ongoing																								
99	M - 4.1.6	18	Survey Monuments	ongoing	✓	C	NONE		✓	C	NONE																	
100	M - 4.3.2	47	Landfill Liner	ongoing	✓	NA	I-a		✓	NA	I-b						✓	NA	I-d						✓	NA	I-f	

* C = Compliant, NC = Non-Compliant, FRN = Further Review Needed, R = Resolved

** See Appendix I for Comments

Checkmark = Condition or mitigation was monitored

/ = Yearly or non-ongoing monitoring frequency

Sunshine Canyon Landfill Mitigation Monitoring Summary - (City 1-01-2013 through 3-31-2013)

Line #	Reference #	Mitigation #	City Mitigation Measures and Conditions Monitored by Discipline	Monitoring Frequency	1/16/2013	Status*	Further Review Needed/Comments**	Resolved*	2/1/2013	Status*	Further Review Needed/Comments**	Resolved*	2/13/2013	Status*	Further Review Needed/Comments**	Resolved*	2/27/2013	Status*	Further Review Needed/Comments**	Resolved*	3/13/2013	Status*	Further Review Needed/Comments**	Resolved*	3/20/2013	Status*	Further Review Needed/Comments**	Resolved*
101	M - 4.3.2	48	Landfill Liner	ongoing	✓	NA	I-a		✓	NA	I-b						✓	NA	I-d						✓	NA	I-f	
102	M - 4.3.2	54	Preliminary Closure/Postclosure Plan	status																								
103	M - 4.3.2	55	Landfill Design/Operation/Final	status																								
104	M - 4.3.2	56	Cover Application	ongoing	✓	C	NONE		✓	C	NONE						✓	C	NONE									
105	M - 4.14.1	155	Access Roadway Grade	ongoing	✓	C	NONE		✓	C	NONE						✓	C	NONE									
106	M - 4.18	178	Landfill Elevation Exceedance	ongoing					✓	C	I-b						✓	C	I-d									
107																												
108	Hydrologist																											
109																												
110																												
111	M - 4.1.4	11	Earthquake Operations Checklist	upon event	/	NA	NONE		/	NA	NONE		/	NA	NONE		/	NA	NONE		/	NA	NONE		/	NA	NONE	
112	M - 4.3.1	36	Surface Water Infiltration Minimization	ongoing					✓	C	I-b																	
113	M - 4.3.1	37	Surface Drainage Systems	ongoing					✓	C	I-b																	
114	M - 4.3.1	38	Permanent/Temporary Ditches	ongoing																								
115	M - 4.3.1	39	Drainage Protection	ongoing					✓	C	I-b																	
116	M - 4.3.1	40	SWRCB Permit Coverage	ongoing																								
117	M - 4.3.1	41	Surface Water Collection System	ongoing																								
118	M - 4.3.1	42	Surface Water Quality Monitoring	ongoing																								

* C = Compliant, NC = Non-Compliant, FRN = Further Review Needed, R = Resolved

** See Appendix I for Comments

Checkmark = Condition or mitigation was monitored

/ = Yearly or non-ongoing monitoring frequency

Sunshine Canyon Landfill Mitigation Monitoring Summary - (City 1-01-2013 through 3-31-2013)

Line #	Reference #	Mitigation #	City Mitigation Measures and Conditions Monitored by Discipline	Monitoring Frequency	1/16/2013	Status*	Further Review Needed/Comments**	Resolved*	2/1/2013	Status*	Further Review Needed/Comments**	Resolved*	2/13/2013	Status*	Further Review Needed/Comments**	Resolved*	2/27/2013	Status*	Further Review Needed/Comments**	Resolved*	3/13/2013	Status*	Further Review Needed/Comments**	Resolved*	3/20/2013	Status*	Further Review Needed/Comments**	Resolved*
119	M - 4.3.1	43	Sediment Basin Maintenance	ongoing	✓	C	NONE		✓	C	NONE																	
120	M - 4.3.1	44	Final Landfill Cover	ongoing	✓	C	NONE		✓	C	NONE																	
121	M - 4.3.1	45	Erosion Control Plan	ongoing					✓	C	I-b																	
122	M - 4.3.1	46	Preventive Maintenance Program	ongoing					✓	FRN	I-b																	
123	M - 4.3.2	49	Interception of Groundwater Seepage	ongoing	/	NA	NONE		/	NA	NONE																	
124	M - 4.3.2	50	LCRS/Leachate Monitoring	ongoing	/	NA	NONE		/	NA	NONE																	
125	M - 4.3.2	51	LCRS Monitoring	ongoing	/	NA	NONE		/	NA	NONE																	
126																												
127	Biologist																											
128																												
129																												
130	M - 4.1.1	6	Slope Erosion Control	ongoing	✓	FRN	I-a		✓	FRN	I-b		✓	FRN	I-c		✓	FRN	I-d		✓	FRN	I-e					
131	M - 4.2.11	23	Revegetation/Excavation	ongoing	✓	FRN	I-a		✓	FRN	I-b		✓	FRN	I-c		✓	FRN	I-d		✓	FRN	I-e					
132	M - 4.2.12		Temporary Vegetation Cover	ongoing	✓	FRN	I-a		✓	FRN	I-b		✓	FRN	I-c		✓	FRN	I-d		✓	FRN	I-e					
133	M - 4.4.1	60	Coastal Sage Scrub Mitigation Plan	ongoing	✓	FRN	I-a		✓	FRN	I-b		✓	FRN	I-c						✓	FRN	I-e		✓	FRN	I-f	
134	M - 4.4.1	61	Coastal Sage Scrub Seeding	ongoing	✓	FRN	I-a		✓	FRN	I-b																	
135	M - 4.4.1	62	Mariposa Lily Mitigation Plan	ongoing																								
136	M - 4.4.1	63	San Diego Horned Lizard Mitigation	ongoing																								

* C = Compliant, NC = Non-Compliant, FRN = Further Review Needed, R = Resolved

** See Appendix I for Comments

Checkmark = Condition or mitigation was monitored

/ = Yearly or non-ongoing monitoring frequency

Sunshine Canyon Landfill Mitigation Monitoring Summary - (City 1-01-2013 through 3-31-2013)

Line #	Reference #	Mitigation #	City Mitigation Measures and Conditions Monitored by Discipline	Monitoring Frequency	1/16/2013	Status*	Further Review Needed/Comments**	Resolved*	2/1/2013	Status*	Further Review Needed/Comments**	Resolved*	2/13/2013	Status*	Further Review Needed/Comments**	Resolved*	2/27/2013	Status*	Further Review Needed/Comments**	Resolved*	3/13/2013	Status*	Further Review Needed/Comments**	Resolved*	3/20/2013	Status*	Further Review Needed/Comments**	Resolved*
137	M - 4.4.1	64	California Gnatcatcher Surveys	ongoing	/				/																			
138	M - 4.4.1	65	Least Bell's Vireo Surveys	ongoing	/				/																			
139	M - 4.4.1	66	Western Burrowing Owl Surveys	ongoing	/				/																			
140	M - 4.4.1	67	Migratory Bird Treaty Act	ongoing	/				/																			
141	M - 4.4.1	68	Raptor Nests Habitat	ongoing	/				/																			
142	M - 4.4.3	72	Native Tree Mitigation	ongoing	✓	C	NONE		✓	C	NONE		✓	C	NONE													
143	M - 4.4.3	73	Nonnative Tree Mitigation	status	✓	C	NONE		✓	C	NONE		✓	C	NONE													
144	M - 4.4.3	74	Mitigation Tree Planting	ongoing	✓	C	NONE		✓	C	NONE		✓	C	NONE													
145	M - 4.4.3	75	Tree Planting Mitigation Site Prep	ongoing	✓	C	NONE		✓	C	NONE		✓	C	NONE													
146	M - 4.4.3	76	Poultry Wire Screen	ongoing	✓	C	NONE		✓	C	NONE		✓	C	NONE													
147	M - 4.4.3	77	Backfill Material	ongoing	✓	C	NONE		✓	C	NONE		✓	C	NONE													
148	M - 4.4.3	78	Tree Planting Procedure	ongoing	✓	C	NONE		✓	C	NONE		✓	C	NONE													
149	M - 4.4.3	79	Tree Area Mulching	ongoing	✓	C	NONE		✓	C	NONE		✓	C	NONE													
150	M - 4.4.3	80	Tree Irrigation/Fertilization	ongoing	✓	C	NONE		✓	C	NONE		✓	C	NONE													
151	M - 4.4.3	81	Irrigation System	ongoing	✓	C	NONE		✓	C	NONE		✓	C	NONE													
152	M - 4.4.3	82	Annual Tree Monitoring Report	annual																								
153	M - 4.9.2	96	Vector Activity Monitoring	ongoing	✓	C	NONE		✓	C	NONE																	

* C = Compliant, NC = Non-Compliant, FRN = Further Review Needed, R = Resolved

** See Appendix I for Comments

Checkmark = Condition or mitigation was monitored

/ = Yearly or non-ongoing monitoring frequency

Sunshine Canyon Landfill Mitigation Monitoring Summary - (City 1-01-2013 through 3-31-2013)

Line #	Reference #	Mitigation #	City Mitigation Measures and Conditions Monitored by Discipline	Monitoring Frequency	1/16/2013	Status*	Further Review Needed/Comments**	Resolved*	2/1/2013	Status*	Further Review Needed/Comments**	Resolved*	2/13/2013	Status*	Further Review Needed/Comments**	Resolved*	2/27/2013	Status*	Further Review Needed/Comments**	Resolved*	3/13/2013	Status*	Further Review Needed/Comments**	Resolved*	3/20/2013	Status*	Further Review Needed/Comments**	Resolved*
154	M - 4.9.2	97	Vector Elimination	ongoing	✓	C	NONE		✓	C	NONE																	
155	M - 4.9.2	98	Fly Control	ongoing																								
156	M - 4.9.2	99	Rodent Control	ongoing	✓	C	NONE		✓	C	NONE																	
157	M - 4.9.2	100	Operational Vector-Limiting Activity	ongoing	✓	C	NONE		✓	C	NONE																	
158	M - 4.9.2	101	Equipment Cleanliness/Maintenance	ongoing	✓	C	NONE		✓	C	NONE																	
159	M - 4.9.2	102	Storage of Vector-Attracting Items	ongoing	✓	C	NONE		✓	C	NONE																	
160	M - 4.9.2	103	Salvaged Material Storage- Vector Control	ongoing																								
161	M - 4.9.2	104	Periodic Vector Inspections	ongoing	✓	C	NONE		✓	C	NONE																	
162	M - 4.9.2	105	Implementation of Vector Control Measures	ongoing																								
163																												
164	Air Quality & Noise Specialist																											
165																												
166																												
167	M - 4.2.11	19	Emissions Mitigation Measures	ongoing	✓	C	NONE		✓	C	NONE						✓	C	NONE		✓	C	NONE					
168	M - 4.2.11	19	Construction Curtailing due to Pollution	ongoing	✓	C	NONE		✓	C	NONE						✓	C	NONE		✓	C	NONE					
169	M - 4.2.11	20	Dust Lofting Minimization	ongoing	✓	C	NONE		✓	C	NONE						✓	C	NONE		✓	C	NONE					
170	M - 4.2.11	21	Wind Speed Monitoring	ongoing	✓	C	NONE		✓	C	NONE						✓	C	NONE		✓	C	NONE					
171	M - 4.2.11	22	Grading-Dust Reduction	ongoing	✓	C	NONE		✓	C	NONE						✓	C	NONE		✓	C	NONE					

* C = Compliant, NC = Non-Compliant, FRN = Further Review Needed, R = Resolved

** See Appendix I for Comments

Checkmark = Condition or mitigation was monitored

/= Yearly or non-ongoing monitoring frequency

Sunshine Canyon Landfill Mitigation Monitoring Summary - (City 1-01-2013 through 3-31-2013)

Line #	Reference #	Mitigation #	City Mitigation Measures and Conditions Monitored by Discipline	Monitoring Frequency	1/16/2013	Status*	Further Review Needed/Comments**	Resolved*	2/1/2013	Status*	Further Review Needed/Comments**	Resolved*	2/13/2013	Status*	Further Review Needed/Comments**	Resolved*	2/27/2013	Status*	Further Review Needed/Comments**	Resolved*	3/13/2013	Status*	Further Review Needed/Comments**	Resolved*	3/20/2013	Status*	Further Review Needed/Comments**	Resolved*
172	M - 4.2.12	24	Construction Equipment Maintenance	ongoing	✓	C	NONE		✓	C	NONE						✓	C	NONE		✓	C	NONE					
173	M - 4.2.12		Construction Curtailing due to Pollution	ongoing	✓	C	NONE		✓	C	NONE						✓	C	NONE		✓	C	NONE					
174	M - 4.2.12	25	Refuse Trucks-Maintenance	ongoing																								
175	M - 4.2.12		Refuse Trucks-Engine	ongoing																								
176	M - 4.2.12		Refuse Trucks-Fee Schedule	ongoing	✓	FRN	I-a										✓	FRN	I-d									
177	M - 4.2.12		Refuse Trucks-Fee Schedule Delivery Time	ongoing	✓	FRN	I-a										✓	FRN	I-d									
178	M - 4.2.12		Refuse Trucks-Idling	ongoing																								
179	M - 4.2.12		Refuse Trucks-Emissions	ongoing																								
180	M - 4.2.12	26	Truck Travel and Fugitive Dust Emissions	ongoing	✓	C	NONE		✓	C	NONE						✓	C	NONE		✓	C	NONE					
181	M - 4.2.12		Truck Travel and Fugitive Dust Emissions	ongoing	✓	C	NONE		✓	C	NONE						✓	C	NONE		✓	C	NONE					
182	M - 4.2.12		Truck Travel and Fugitive Dust Emissions	ongoing	✓	C	NONE		✓	C	NONE						✓	C	NONE		✓	C	NONE					
183	M - 4.2.12		Truck Travel and Fugitive Dust Emissions	ongoing	✓	C	NONE		✓	C	NONE						✓	C	NONE		✓	C	NONE					
184	M - 4.5.2	83	Landfill Hours	info																								
185	M - 4.5.2	84	Landfill Equipment-Noise Reduction	ongoing	✓	C	NONE		✓	C	NONE						✓	C	NONE		✓	C	NONE					
186																												
187	Hydrology, Hazardous Waste / Risk of Upset																											
188																												
189																												

* C = Compliant, NC = Non-Compliant, FRN = Further Review Needed, R = Resolved

** See Appendix I for Comments

Checkmark = Condition or mitigation was monitored

/ = Yearly or non-ongoing monitoring frequency

Sunshine Canyon Landfill Mitigation Monitoring Summary - (City 1-01-2013 through 3-31-2013)

Line #	Reference #	Mitigation #	City Mitigation Measures and Conditions Monitored by Discipline	Monitoring Frequency	1/16/2013	Status*	Further Review Needed/Comments**	Resolved*	2/1/2013	Status*	Further Review Needed/Comments**	Resolved*	2/13/2013	Status*	Further Review Needed/Comments**	Resolved*	2/27/2013	Status*	Further Review Needed/Comments**	Resolved*	3/13/2013	Status*	Further Review Needed/Comments**	Resolved*	3/20/2013	Status*	Further Review Needed/Comments**	Resolved*
190	M - 4.3.2	53	Groundwater Monitoring Wells	ongoing																								
191	M - 4.3.2	58	Operation as Class III Landfill	ongoing	✓	C	NONE		✓	C	NONE																	
192	M - 4.3.2	59	Underground Fuel Storage	ongoing	/	NA	NONE		/	NA	NONE																	
193	M - 4.9.1	90	Refuse Inspection Program	ongoing													✓	C	NONE									
194	M - 4.9.1	91	Hazardous Waste Load- Checking	status													✓	C	NONE									
195	M - 4.9.1	93	Hazardous Waste Detection Training	status													✓	C	NONE									
196	M - 4.9.1	94	Spill Response Program	status													✓	C	NONE									
197	M - 4.9.4	115	Safety Inspections/Checklists	ongoing													✓	C	NONE									
198	M - 4.9.4	118	Accident/Injury reports, Inspections	status													✓	C	NONE									
199	M - 4.9.4	121	Fire Prevention Plan	ongoing	✓	C	NONE		✓	C	NONE						✓	C	NONE									
200	M - 4.9.4	123	Personal Protective Equipment	ongoing													✓	C	NONE									
201	M - 4.9.4	125	Site Access/Fencing	ongoing													✓	FRN	I-d						✓	FRN	I-f	
202	M - 4.14.1	147	Fire Response Capabilities	ongoing													✓	FRN	I-d									
203	M - 4.14.1	148	Hydrant Installation	ongoing																								
204																												
205	Archaeologist																											
206																												
207																												

* C = Compliant, NC = Non-Compliant, FRN = Further Review Needed, R = Resolved

** See Appendix I for Comments

Checkmark = Condition or mitigation was monitored

/ = Yearly or non-ongoing monitoring frequency

Sunshine Canyon Landfill Mitigation Monitoring Summary - (City 1-01-2013 through 3-31-2013)

Line #	Reference #	Mitigation #	City Mitigation Measures and Conditions Monitored by Discipline	Monitoring Frequency	1/16/2013	Status*	Further Review Needed/Comments**	Resolved*	2/1/2013	Status*	Further Review Needed/Comments**	Resolved*	2/13/2013	Status*	Further Review Needed/Comments**	Resolved*	2/27/2013	Status*	Further Review Needed/Comments**	Resolved*	3/13/2013	Status*	Further Review Needed/Comments**	Resolved*	3/20/2013	Status*	Further Review Needed/Comments**	Resolved*
208	M - 4.19.1	183	Archaeological Resurvey	ongoing	/	NA	I-a		/	NA	I-b		/	NA	I-c		/	NA	I-d		/	NA	I-e		/	NA	I-f	
209	M - 4.19.1	184	Onsite Archaeologist	ongoing	/	NA	I-a		/	NA	I-b		/	NA	I-c		/	NA	I-d		/	NA	I-e					
210	M - 4.19.1	185	Archaeological Resources	ongoing	/	NA	I-a		/	NA	I-b		/	NA	I-c		/	NA	I-d		/	NA	I-e					
211	M - 4.19.1	186	Archaeological Resources	ongoing	/	NA	I-a		/	NA	I-b		/	NA	I-c		/	NA	I-d		/	NA	I-e					
212																												
213	Paleontologist																											
214																												
215																												
216	M - 4.19.2	187	Paleontological Resources Resurvey	ongoing	/	NA	I-a		/	NA	I-b									/	NA	I-e						
217	M - 4.19.2	188	Paleontological Resources Excavation	ongoing	/	NA	I-a		/	NA	I-b		/	NA	I-c		/	NA	I-d		/	NA	I-e					
218	M - 4.19.2	189	Paleontological Resources Training	ongoing	/	NA	I-a		/	NA	I-b		/	NA	I-c		/	NA	I-d		/	NA	I-e					
219	M - 4.19.2	190	Paleontological Resources Recovery	ongoing	/	NA	I-a		/	NA	I-b		/	NA	I-c		/	NA	I-d		/	NA	I-e					
220	M - 4.19.2	191	Paleontological Resources Inspection	ongoing	/	NA	I-a		/	NA	I-b		/	NA	I-c		/	NA	I-d		/	NA	I-e					

* C = Compliant, NC = Non-Compliant, FRN = Further Review Needed, R = Resolved

** See Appendix I for Comments

Checkmark = Condition or mitigation was monitored

/ = Yearly or non-ongoing monitoring frequency

Sunshine Canyon Landfill First Quarter 2013 Mitigation Monitoring Summary / County – See Excel Spreadsheet

Sunshine Canyon Landfill Mitigation Monitoring Summary - County (01-01-2013 through 03-31-2013)

Line #	Reference #	Mitigation #	County Mitigation Measures and Conditions Monitored by Discipline	Monitoring Frequency	1/16/2013	Status*	Further Review Needed/Comments**	Resolved*	2/1/2013	Status*	Further Review Needed/Comments**	Resolved*	2/13/2013	Status*	Further Review Needed/Comments**	Resolved*	2/27/2013	Status*	Further Review Needed/Comments**	Resolved*	3/13/2013	Status*	Further Review Needed/Comments**	Resolved*	3/20/2013	Status*	Further Review Needed/Comments**	Resolved*
1	Project Manager																											
2																												
3																												
4	Amendment 45.N 1	45N	Daily Cover Materials	ongoing	✓	C	NONE		✓	C	NONE																	
5	Amendment 45.N 3	45N	Daily Cover Procedure	ongoing	✓	C	NONE		✓	C	NONE																	
6	Amendment 45.N 4.a	45N	Order for Abatement Status	ongoing	/		I-a		/		I-b		/		I-c		/		I-d		/		I-e		/		I-f	
7	Amendment 45.N 4.c	45N	Odor Patrol Program	ongoing	/		I-a		/		I-b		/		I-c		/		I-d		/		I-e		/		I-f	
8	Amendment 45.N 4.d	45N	Landfill Gas Mitigation Plan	ongoing	/		I-a		/		I-b		/		I-c		/		I-d		/		I-e		/		I-f	
9	Amendment 45.N 5	45N	Dust and Odor Reports	ongoing	/		I-a		/		I-b		/		I-c		/		I-d		/		I-e		/		I-f	
10																												
11	Combined Site & Bridge Area -20.A	20. A	Joint Powers Authority	info	/				/				/				/				/				/			
12	Combined Site & Bridge Area -20.F	20. F	Mitigation Reporting and Monitoring Program	status	/				/				/				/				/				/			
13	Landfill Capacity - 27	27	Tipping Fees for Partial Loads/Peak Hours	status	✓	FRN	I-a		✓	FRN	I-b																	
14	Grading & Drainage-41.A -.D	41A- D	Water Conservation	status	✓	C	NONE		✓	C	NONE		✓	C	NONE		✓	C	NONE		✓	C	NONE					
15	Revegetation - 44.F	44. F	Revegetation	status	✓	FRN	I-a		✓	FRN	I-b		✓	FRN	I-c		✓	FRN	I-d		✓	FRN	I-e					
16	Fugitive Dust - 45.B	45. B	Working Face Areas	ongoing	✓	C	NONE		✓	C	NONE		✓	C	NONE		✓	C	NONE		✓	C	NONE					
17	Fugitive Dust - 45.F	45. F	Inactive Areas Monitoring	ongoing	✓	FRN	I-a		✓	FRN	I-b																	

* C = Compliant, NC = Non-Compliant, FRN = Further Review Needed, R = Resolved

** See Appendix I for Comments

Checkmark = Condition or mitigation was monitored

/ = Yearly or non-ongoing monitoring frequency

Sunshine Canyon Landfill Mitigation Monitoring Summary - County (01-01-2013 through 03-31-2013)

Line #	Reference #	Mitigation #	County Mitigation Measures and Conditions Monitored by Discipline	Monitoring Frequency	1/16/2013	Status*	Further Review Needed/Comments**	Resolved*	2/1/2013	Status*	Further Review Needed/Comments**	Resolved*	2/13/2013	Status*	Further Review Needed/Comments**	Resolved*	2/27/2013	Status*	Further Review Needed/Comments**	Resolved*	3/13/2013	Status*	Further Review Needed/Comments**	Resolved*	3/20/2013	Status*	Further Review Needed/Comments**	Resolved*
18	Fugitive Dust - 45.I	45.I	Cleaning of Roads	ongoing	✓	C	NONE		✓	C	NONE		✓	C	NONE		✓	C	NONE		✓	C	NONE					
19	Litter Control - 46.A - .D	46A-D	Litter Control Program	ongoing	✓	C	NONE		✓	C	NONE										✓	FRN	I-e					
20	Gas - 52	52	Landfill Gas Collection System	ongoing	✓	C	NONE		✓	C	NONE		✓	C	NONE		✓	C	NONE		✓	C	NONE					
21	Traffic - 57	57	Traffic Improvements	status	/				/				/				/				/							
22	Traffic - 60	60	Street Light Installation	status	/				/				/				/				/							
23	Traffic - 61	61	Traffic Minimization	ongoing	✓	C	NONE		✓	C	NONE																	
24	Permittee Fees - 64 - 72	64-72	Permittee Fees	info	/				/				/				/				/							
25	Permittee Fees - 69	69	Permittee Fees-Contributions	info	/				/				/				/				/							
26	Permittee Fees - 70	70	Permittee Fees	info	/				/				/				/				/							
27	Permittee Fees - 72	72	Permittee Fees	info	/				/				/				/				/							
28	Alternative Fuel Vehicles - 77.A	77.A	Alternative Fuel Vehicles-Light Duty	status	✓	C	NONE		✓	C	NONE		✓	C	NONE		✓	C	NONE		✓	C	NONE					
29	Alternative Fuel Vehicles - 77.B	77.B	Alternative Fuel Vehicles-Refuse/Collection Trucks	status	✓	C	NONE		✓	C	NONE		✓	C	NONE		✓	C	NONE		✓	C	NONE					
30	Alternative Fuel Vehicles - 77.C	77.C	Alternative Fuel Vehicles-Report	status																								
31	Alternative Fuel Vehicles - 77.D	77.D	Alternative Fuel Vehicles-heavy-duty, alternative fuel off-	status																								
32	Alternative Fuel Vehicles - 77.E	77.E	Alternative Fuel Vehicles-Non-diesel Requirements	status																								
33	Alternative Fuel Vehicles - 77.F	77.F	Alternative Fuel Vehicles-Non-diesel Truck Trip	status																								

* C = Compliant, NC = Non-Compliant, FRN = Further Review Needed, R = Resolved

** See Appendix I for Comments

Checkmark = Condition or mitigation was monitored

/ = Yearly or non-ongoing monitoring frequency

Sunshine Canyon Landfill Mitigation Monitoring Summary - County (01-01-2013 through 03-31-2013)

Line #	Reference #	Mitigation #	County Mitigation Measures and Conditions Monitored by Discipline	Monitoring Frequency	1/16/2013	Status*	Further Review Needed/Comments**	Resolved*	2/1/2013	Status*	Further Review Needed/Comments**	Resolved*	2/13/2013	Status*	Further Review Needed/Comments**	Resolved*	2/27/2013	Status*	Further Review Needed/Comments**	Resolved*	3/13/2013	Status*	Further Review Needed/Comments**	Resolved*	3/20/2013	Status*	Further Review Needed/Comments**	Resolved*
34	Alternative Fuel Vehicles - 77.G	77.G	Alternative Fuel Vehicles- Clean Fuel Demo Program	status																								
35	Alternative Fuel Vehicles - 77.H	77.H	Alternative Fuel Vehicles- Compliance Evaluation	status																								
36	Air Quality Monitoring - 81	81	Air Quality Monitoring-Testing	ongoing	/			/				/					/				/							
37			Air Quality Monitoring-Testing																									
38	IMP - Part I..A	IMP 1	Air Quality Monitoring-Testing	ongoing	/			/				/					/				/							
39			Air Quality Monitoring-Testing																									
40	IMP - Part VI	IMP 6	Air Quality Monitoring-Testing	ongoing	/			/				/					/				/							
41																												
42	MMRS-12/01/06		Mitigation Monitoring and Reporting Summary	info	/			/				/					/				/							
43			Permits																									
44	Geology - 1.15		Permittee's On-site Solid Waste Recovery and	status	/			/				/					/				/							
45	Surface Water - 2.09		SWRCB Permit Coverage	ongoing	/			/				/					/				/							
46	Surface Water - 2.15		Surface Water Preventive Maintenance Program	ongoing	✓	FRN	I-a	✓	FRN	I-b						✓	FRN	I-d		✓	FRN	I-e						
47	Groundwater - 3.13		Groundwater-LFG Migration Mitigation	ongoing	/			/				/					/				/							
48	Groundwater - 3.14		Groundwater-Monitoring Wells	ongoing	/			/				/					/				/							
49	BIOTA – 4.05		Annual Fee Submission for SEA Studies	status	/			/				/					/				/							
50	BIOTA – 4.06		Buffer Zone Maintenance as Nature Preserve	ongoing	✓	C	NONE	✓	C	NONE										✓	C	NONE						

* C = Compliant, NC = Non-Compliant, FRN = Further Review Needed, R = Resolved

** See Appendix I for Comments

Checkmark = Condition or mitigation was monitored

/ = Yearly or non-ongoing monitoring frequency

Sunshine Canyon Landfill Mitigation Monitoring Summary - County (01-01-2013 through 03-31-2013)

Line #	Reference #	Mitigation #	County Mitigation Measures and Conditions Monitored by Discipline	Monitoring Frequency	1/16/2013	Status*	Further Review Needed/Comments**	Resolved*	2/1/2013	Status*	Further Review Needed/Comments**	Resolved*	2/13/2013	Status*	Further Review Needed/Comments**	Resolved*	2/27/2013	Status*	Further Review Needed/Comments**	Resolved*	3/13/2013	Status*	Further Review Needed/Comments**	Resolved*	3/20/2013	Status*	Further Review Needed/Comments**	Resolved*
51	BIOTA – 4.07		Buffer Zone Maintenance-Vegetation	ongoing	✓	C	NONE		✓	C	NONE										✓	C	NONE					
52	BIOTA – 4.08		Ridgeline Maintenance-Remain Undisturbed	ongoing	✓	C	NONE		✓	C	NONE										✓	C	NONE					
53	BIOTA – 4.47		Cleaning of Equipment	ongoing	✓	C	NONE		✓	C	NONE										✓	C	NONE					
54	BIOTA – 4.48		Monitoring of Vector-Attracting Items	ongoing	✓	C	NONE		✓	C	NONE										✓	C	NONE					
55	BIOTA – 4.49		Salvaged Material Storage-Vector Control	ongoing	✓	C	NONE		✓	C	NONE										✓	C	NONE					
56	BIOTA – 4.50		Vector Activity Monitoring	ongoing	✓	C	NONE		✓	C	NONE										✓	C	NONE					
57	Air Quality - 6.03		Dust Emission Minimization	ongoing	✓	C	NONE		✓	C	NONE										✓	C	NONE					
58	Air Quality - 6.04		Usage of Cut Material for Cover	ongoing	✓	C	NONE		✓	C	NONE										✓	C	NONE					
59	Air Quality - 6.05		Operations in Accordance with SCAQMD/DOPW	info	/				/				/				/				/							
60	Air Quality - 6.06		Landfill Gas Control/Extraction System/Monitoring	ongoing	/				/				/				/				/							
61	Air Quality - 6.07		Flaring Systems	info	/				/				/				/				/							
62	Air Quality - 6.08		Management of Truck Arrivals	ongoing	/				/				/				/				/							
63	Air Quality - 6.10		Refuse Truck Mitigation	status	✓	C	NONE		✓	C	NONE																	
64	Air Quality - 6.11		Light Duty Alternative Fuel Vehicles	status	✓	C	NONE		✓	C	NONE		✓	C	NONE		✓	C	NONE									
65	Air Quality - 6.11		Alternative Fuel Refuse Collection/Transfer Trucks	status																								
66	Air Quality - 6.11		Alternative Fuel Vehicle Report Submission	status																								

* C = Compliant, NC = Non-Compliant, FRN = Further Review Needed, R = Resolved

** See Appendix I for Comments

Checkmark = Condition or mitigation was monitored

/ = Yearly or non-ongoing monitoring frequency

Sunshine Canyon Landfill Mitigation Monitoring Summary - County (01-01-2013 through 03-31-2013)

Line #	Reference #	Mitigation #	County Mitigation Measures and Conditions Monitored by Discipline	Monitoring Frequency	1/16/2013	Status*	Further Review Needed/Comments**	Resolved*	2/1/2013	Status*	Further Review Needed/Comments**	Resolved*	2/13/2013	Status*	Further Review Needed/Comments**	Resolved*	2/27/2013	Status*	Further Review Needed/Comments**	Resolved*	3/13/2013	Status*	Further Review Needed/Comments**	Resolved*	3/20/2013	Status*	Further Review Needed/Comments**	Resolved*
67	Air Quality - 6.11		Heavy-duty, Alternative Fuel Off-Road Equipment Pilot	status																								
68	Air Quality - 6.11		Non-Diesel, Alternative Fuel Vehicles-Transfer/Collection	status																								
69	Air Quality - 6.11		Non-Diesel, Alternative Fuel VehiclesTruck Trips	status																								
70	Air Quality - 6.11		Clean Fuel Demonstration Program	status																								
71	Air Quality - 6.11		Compliance Evaluation	status																								
72	Odor/Landfill Gas - 7.01		Landfill Gas Escape Prevention	ongoing	/				/				/				/				/				/			
73	Odor/Landfill Gas - 7.02		Landfill Gas Collection System	ongoing	/				/				/				/				/				/			
74	Odor/Landfill Gas - 7.04		Gas Collection/Flare System Risk Mitigation	ongoing	✓	FRN	I-a								✓	FRN	I-d											
75	Odor/Landfill Gas - 7.05		Wellhead Awareness	status	/				/				/				/											
76	Odor/Landfill Gas - 7.06		Odor Control Measures	ongoing	✓	C	I-a	R	✓	C	NONE				✓	C	I-d											
77	Odor/Landfill Gas - 7.07		Gas Recovery and Sale	status											✓	C	I-d											
78	Traffic/Circulation - 8.03		Street Light Installation	status	/				/				/				/				/				/			
79	Traffic/Circulation - 8.04		Truck Traffic Minimization	status	✓	C	NONE		✓	C	NONE																	
80	Traffic/Circulation - 8.08		Tipping Fees for Partial Loads/Peak Hours	status	✓	FRN	I-a		✓	FRN	I-b				✓	FRN	I-d											
81	Traffic/Circulation - 8.10		Nighttime Landfill Operations Feasibility	status	/				/				/				/				/				/			
82	Traffic/Circulation - 8.11		Parking Management along San Fernando Road	status	/				/				/				/				/				/			

* C = Compliant, NC = Non-Compliant, FRN = Further Review Needed, R = Resolved

** See Appendix I for Comments

Checkmark = Condition or mitigation was monitored

/ = Yearly or non-ongoing monitoring frequency

Sunshine Canyon Landfill Mitigation Monitoring Summary - County (01-01-2013 through 03-31-2013)

Line #	Reference #	Mitigation #	County Mitigation Measures and Conditions Monitored by Discipline	Monitoring Frequency	1/16/2013	Status*	Further Review Needed/Comments**	Resolved*	2/1/2013	Status*	Further Review Needed/Comments**	Resolved*	2/13/2013	Status*	Further Review Needed/Comments**	Resolved*	2/27/2013	Status*	Further Review Needed/Comments**	Resolved*	3/13/2013	Status*	Further Review Needed/Comments**	Resolved*	3/20/2013	Status*	Further Review Needed/Comments**	Resolved*
83	Traffic/Circulation – 8.13		Adequate Queuing	status	/			/																				
84	Visual – 10.03		Landfill Flare Locations	status	/			/					/				/				/				/			
85	Visual – 10.04		Confinement of Excavation Cover Material	status	✓	C	NONE																					
86	Visual – 10.05		Lighting Requirements	status	✓	C	NONE																					
87	Visual – 10.11		Litter Control Program	ongoing	✓	C	NONE																					
88	Visual – 10.11		Solid Waste Load Procedures- Improperly	ongoing	✓	C	NONE																					
89	Visual – 10.11		Debris Removal at Entrance	ongoing	✓	C	NONE										✓	C	NONE									
90	Visual – 10.11		Litter Control-Fencing	ongoing	✓	C	NONE																					
91	Visual – 10.11		Periodic Litter Pickup	ongoing	✓	C	NONE	✓	C	NONE							✓	FRN	I-d		✓	FRN	I-e					
92	Visual – 10.11		Litter Control-Additional Measures	ongoing	✓	C	NONE	✓	C	NONE																		
93	Visual – 10.12		Discharge Control/Litter Recovery	status	✓	C	NONE	✓	C	NONE																		
94	Water Conserv. - 11.01		Water Conservation	ongoing	✓	C	NONE	✓	C	NONE							✓	C	NONE		✓	C	NONE					
95	Recycling - 14.01		On-site Waste Diversion/Recycling	ongoing	✓	C	NONE	✓	C	NONE																		
96	Recycling - 14.03		Tonnage Disposal Determination	info	/			/					/				/				/				/			
97	Recycling - 14.04		Recycling-Variou sTasks	info	/			/					/				/				/				/			
98			Clean Dirt Procedures																									

* C = Compliant, NC = Non-Compliant, FRN = Further Review Needed, R = Resolved

** See Appendix I for Comments

Checkmark = Condition or mitigation was monitored

/ = Yearly or non-ongoing monitoring frequency

Sunshine Canyon Landfill Mitigation Monitoring Summary - County (01-01-2013 through 03-31-2013)

Line #	Reference #	Mitigation #	County Mitigation Measures and Conditions Monitored by Discipline	Monitoring Frequency	1/16/2013	Status*	Further Review Needed/Comments**	Resolved*	2/1/2013	Status*	Further Review Needed/Comments**	Resolved*	2/13/2013	Status*	Further Review Needed/Comments**	Resolved*	2/27/2013	Status*	Further Review Needed/Comments**	Resolved*	3/13/2013	Status*	Further Review Needed/Comments**	Resolved*	3/20/2013	Status*	Further Review Needed/Comments**	Resolved*
99	Site - 15.11		Reclaimed Water Utilization	status	✓	C	NONE		✓	C	NONE		✓	C	NONE		✓	C	NONE									
100	Site - 15.12		Water Conservation Measures	ongoing	✓	C	NONE		✓	C	NONE		✓	C	NONE		✓	C	NONE									
101	Admin Rpts/Pgms - 17.4		Operation Compliance	info	/				/				/				/											
102	Admin Rpts/Pgms -17.10		Fill Sequencing Plans	status																								
103	Admin Rpts/Pgms- 17.15		Quarterly Newsletter	status																								
104	Landfill Operation - 18.7		Graffiti Removal/Deterrent Plan	ongoing	✓	C	NONE		✓	C	NONE																	
122																												
123	Civil & Geotechnical Engineer																											
124																												
125																												
126	Revegetation - 44.C	44.C	Cut Slope Requirements	ongoing																								
127																												
128	Geology - 1.01		Survey Monument Locations	ongoing	✓	C	NONE		✓	C	NONE						✓	C	NONE									
129	Geology - 1.02		Seismic Design	ongoing																								
130	Geology - 1.03		Maximum Refuse Slope Gradients	ongoing	✓	C	NONE		✓	C	NONE						✓	C	NONE									
131	Geology - 1.04		Maximum Refuse Slope Gradients	ongoing	✓	C	NONE		✓	C	NONE						✓	C	NONE									
132	Geology - 1.05		Unsuitable Material Procedures	ongoing					✓	FRN	I-b						✓	C	I-d						✓	C	I-f	

* C = Compliant, NC = Non-Compliant, FRN = Further Review Needed, R = Resolved

** See Appendix I for Comments

Checkmark = Condition or mitigation was monitored

/ = Yearly or non-ongoing monitoring frequency

Sunshine Canyon Landfill Mitigation Monitoring Summary - County (01-01-2013 through 03-31-2013)

Line #	Reference #	Mitigation #	County Mitigation Measures and Conditions Monitored by Discipline	Monitoring Frequency	1/16/2013	Status*	Further Review Needed/Comments**	Resolved*	2/1/2013	Status*	Further Review Needed/Comments**	Resolved*	2/13/2013	Status*	Further Review Needed/Comments**	Resolved*	2/27/2013	Status*	Further Review Needed/Comments**	Resolved*	3/13/2013	Status*	Further Review Needed/Comments**	Resolved*	3/20/2013	Status*	Further Review Needed/Comments**	Resolved*
133	Geology - 1.06		Grading Activities Procedures	ongoing					✓	C	NONE						✓	C	NONE									
134	Geology - 1.07		Grading Activities Procedures	ongoing					✓	FRN	I-b						✓	C	I-d						✓	C	I-f	
135	Geology - 1.09		Outer Perimeter Ridgeline Requirements	info	/				/				/				/				/				/			
136	Geology - 1.12		Soil Stabilization	ongoing	✓	C	NONE		✓	C	NONE																	
137	Geology - 1.16		Checklists/Surveys Following Earthquake	upon event	/	NA			/	NA			/	NA			/	NA			/	NA			/	NA		
138	Geology - 1.18		Alluvium- Removal/Replacement	ongoing					✓	FRN	I-b						✓	C	I-d						✓	C	I-f	
139	Geology - 1.19		Landfill Design/Construction	ongoing																								
140	Geology - 1.20		Landfill Design/Construction- Foundations	ongoing																								
141	Surface Water - 2.03		Surface Drainage Control Facilities	ongoing													✓	C	NONE						✓	C	NONE	
142	Surface Water - 2.05		Underdrain Requirements	ongoing																					✓	C	I-f	
143	Surface Water - 2.06		Final Cover for Surface Water Runoff Control	ongoing																								
144	Groundwater - 3.02		Liner System Requirements	ongoing													✓	C	I-d						✓	C	I-f	
145	Groundwater - 3.04		Onsite Inspector for Liner Installation	ongoing													✓	C	I-d						✓	C	I-f	
146	Groundwater - 3.09		Alluvium Removal	ongoing													✓	C	I-d						✓	C	I-f	
147	Visual – 10.01		Landfill Elevations	ongoing	✓	C	NONE		✓	C	NONE						✓	C	NONE						✓	C	NONE	
148	Visual – 10.02		Final Fill Elevations	ongoing	✓	C	NONE		✓	C	NONE						✓	C	NONE						✓	C	NONE	
149																												

* C = Compliant, NC = Non-Compliant, FRN = Further Review Needed, R = Resolved

** See Appendix I for Comments

Checkmark = Condition or mitigation was monitored

/ = Yearly or non-ongoing monitoring frequency

Sunshine Canyon Landfill Mitigation Monitoring Summary - County (01-01-2013 through 03-31-2013)

Line #	Reference #	Mitigation #	County Mitigation Measures and Conditions Monitored by Discipline	Monitoring Frequency	1/16/2013	Status*	Further Review Needed/Comments**	Resolved*	2/1/2013	Status*	Further Review Needed/Comments**	Resolved*	2/13/2013	Status*	Further Review Needed/Comments**	Resolved*	2/27/2013	Status*	Further Review Needed/Comments**	Resolved*	3/13/2013	Status*	Further Review Needed/Comments**	Resolved*	3/20/2013	Status*	Further Review Needed/Comments**	Resolved*
150	Hydrologist																											
151																												
152																												
153	Grading & Drainage - 38	38	Installation of Drainage Structures	ongoing																								
154																												
155	Geology - 1.17		Landfill Design/Construction-Seismic	ongoing	/	NA			/	NA			/	NA			/	NA			/	NA			/	NA		
156	Surface Water - 2.01		Surface Water Runoff Interception	ongoing	✓	C	NONE		✓	C	NONE																	
157	Surface Water - 2.02		Surface Water Runoff Collection	ongoing	✓	C	NONE		✓	C	I-b																	
158	Surface Water - 2.03		Surface Drainage Control-Maintenance	ongoing	✓	C	NONE		✓	C	I-b																	
159	Surface Water - 2-04		Sedimentation Basin Capabilities	ongoing	✓	C	NONE		✓	C	NONE																	
160	Surface Water - 2.05		Underdrain Placement	ongoing																								
161	Surface Water - 2.07		Drainage Control System Design Approval	ongoing																								
162	Surface Water - 2.08		Surface Water Runoff-Drainage System	ongoing					✓	C	I-b																	
163	Surface Water - 2.10		Surface Water Collection System-Monitoring	ongoing																								
164	Surface Water - 2.11		Surface Water Quality-Collection/Monitoring	ongoing																								
165	Surface Water - 2.12		Permanent/Temporary Drainage Facilities	ongoing																								
166	Surface Water - 2.13		Permanent/Temporary Drainage Facilities	ongoing																								

* C = Compliant, NC = Non-Compliant, FRN = Further Review Needed, R = Resolved

** See Appendix I for Comments

Checkmark = Condition or mitigation was monitored

/ = Yearly or non-ongoing monitoring frequency

Sunshine Canyon Landfill Mitigation Monitoring Summary - County (01-01-2013 through 03-31-2013)

Line #	Reference #	Mitigation #	County Mitigation Measures and Conditions Monitored by Discipline	Monitoring Frequency	1/16/2013	Status*	Further Review Needed/Comments**	Resolved*	2/1/2013	Status*	Further Review Needed/Comments**	Resolved*	2/13/2013	Status*	Further Review Needed/Comments**	Resolved*	2/27/2013	Status*	Further Review Needed/Comments**	Resolved*	3/13/2013	Status*	Further Review Needed/Comments**	Resolved*	3/20/2013	Status*	Further Review Needed/Comments**	Resolved*
167	Surface Water - 2.14		Erosion Control Plan	ongoing	✓	C	I-a		✓	C	I-b						✓	C	I-d									
168	Groundwater - 3.03		Interception of Groundwater Seepage	ongoing																								
169	Groundwater - 3.06		Monitoring Wells	ongoing																								
170																												
171	Biologist																											
172																												
173																												
174	Revegetation - 44	44	Revegetation/Cover Requirements	ongoing	/				/																			
175	Revegetation - 44.A	44.A	Temporary Hydroseed Vegetation	ongoing	✓	FRN	I-a		✓	FRN	I-b		✓	FRN	I-c		✓	FRN	I-d		✓	FRN	I-e					
176	Revegetation - 44.B	44.B	Interim Reclamation/Revegetation	ongoing	✓	C	NONE		✓	C	NONE		✓	C	NONE		✓	C	NONE									
177	Revegetation - 44.D	44.D	Final Fill Slope Requirements	ongoing	/				/				/				/											
178	Revegetation - 44.E	44.E		ongoing	/				/				/				/											
179																												
180	Geology - 1.13		Drainage Plan Approval	ongoing									✓	FRN	I-c													
181	Geology - 1.14		Personnel Retention for Monitoring Soil Erosion	ongoing									✓	FRN	I-c													
182	Groundwater - 3.11		Irrigation/Revegetation Management-Personnel	ongoing																								
183	BIOTA – 4.10		Oak Tree Permit	ongoing									✓	FRN	I-c													
184	BIOTA – 4.11		Oak Tree Mitigation Plan	ongoing	✓	C	NONE		✓	C	NONE																	

* C = Compliant, NC = Non-Compliant, FRN = Further Review Needed, R = Resolved

** See Appendix I for Comments

Checkmark = Condition or mitigation was monitored

/ = Yearly or non-ongoing monitoring frequency

Sunshine Canyon Landfill Mitigation Monitoring Summary - County (01-01-2013 through 03-31-2013)

Line #	Reference #	Mitigation #	County Mitigation Measures and Conditions Monitored by Discipline	Monitoring Frequency	1/16/2013	Status*	Further Review Needed/Comments**	Resolved*	2/1/2013	Status*	Further Review Needed/Comments**	Resolved*	2/13/2013	Status*	Further Review Needed/Comments**	Resolved*	2/27/2013	Status*	Further Review Needed/Comments**	Resolved*	3/13/2013	Status*	Further Review Needed/Comments**	Resolved*	3/20/2013	Status*	Further Review Needed/Comments**	Resolved*
185	BIOTA – 4.13		Oak Tree Mitigation Counting	ongoing	✓	C	NONE		✓	C	NONE																	
186	BIOTA – 4.20		Poultry Wire Screen	ongoing	✓	C	NONE		✓	C	NONE																	
187	BIOTA – 4.24		Drip Irrigation	ongoing	✓	C	NONE		✓	C	NONE																	
188	BIOTA – 4.27		Coastal Sage Scrub Mitigation Plan	ongoing					✓	FRN	I-b		✓	FRN	I-c													
189	BIOTA – 4.28		Coastal Sage Scrub Seeding	ongoing																								
190	BIOTA – 4.29		San Diego Horned Lizard Mitigation	ongoing	✓	C	NONE		✓	C	NONE																	
191	BIOTA – 4.30		California Gnatcatcher Surveys	ongoing	✓	C	NONE		✓	C	NONE																	
192	BIOTA – 4.31		Least Bell's Vireo Surveys	ongoing	✓	C	NONE		✓	C	NONE																	
193	BIOTA – 4.32		Western Burrowing Owl Surveys	ongoing	✓	C	NONE		✓	C	NONE																	
194	BIOTA – 4.33		Migratory Bird Treaty Act	ongoing	✓	C	NONE		✓	C	NONE																	
195	BIOTA – 4.34		Raptor Nests Habitat	ongoing	✓	C	NONE		✓	C	NONE																	
196	BIOTA – 4.36		Personnel Retention for Monitoring Revegetation Plan	ongoing																								
197	BIOTA – 4.37		Personnel Retention for Monitoring Revegetation Plan,	status																								
198	BIOTA – 4.38		Green Waste Material	ongoing																								
199	BIOTA – 4.39		Revegetation of Slopes/Fill Areas	ongoing																								
200	BIOTA – 4.41		Revegetation Plan- Replacement Cover	ongoing																								
201	BIOTA – 4.42		Interim Vegetation	ongoing	✓	FRN	I-a		✓	FRN	I-b		✓	FRN	I-c						✓	FRN	I-e					

* C = Compliant, NC = Non-Compliant, FRN = Further Review Needed, R = Resolved

** See Appendix I for Comments

Checkmark = Condition or mitigation was monitored

/ = Yearly or non-ongoing monitoring frequency

Sunshine Canyon Landfill Mitigation Monitoring Summary - County (01-01-2013 through 03-31-2013)

Line #	Reference #	Mitigation #	County Mitigation Measures and Conditions Monitored by Discipline	Monitoring Frequency	1/16/2013	Status*	Further Review Needed/Comments**	Resolved*	2/1/2013	Status*	Further Review Needed/Comments**	Resolved*	2/13/2013	Status*	Further Review Needed/Comments**	Resolved*	2/27/2013	Status*	Further Review Needed/Comments**	Resolved*	3/13/2013	Status*	Further Review Needed/Comments**	Resolved*	3/20/2013	Status*	Further Review Needed/Comments**	Resolved*
202	BIOTA – 4.43		Replacement Riparian Habitat	status	/				/																			
203	Air Quality - 6.02		Dust Control	ongoing					✓	FRN	I-b																	
204	Visual – 10.06		Upper Ridge Planting/Revegetation	ongoing	✓	C	NONE		✓	C	NONE																	
205	Visual – 10.07		Tree Planting Around Perimeter	ongoing	✓	C	NONE		✓	C	NONE																	
206	Visual – 10.08		Cover/Revegetation Requirements	ongoing	✓	C	I-a													✓	FRN	I-e						
207	Visual – 10.08		Solid Waste Disposal Procedures	ongoing	✓	C	NONE		✓	C	NONE									✓	C	NONE						
208	Visual – 10.08		Final Cut Slope Steepness	ongoing	✓	C	NONE		✓	C	NONE																	
209	Visual – 10.08		Final Fill Slopes- Reclamation/Revegetation	status	/	NA	I-a		/	NA	I-b																	
210	Visual – 10.08		Revegetation Requirements	status					✓	FRN	I-b																	
211	Visual – 10.09		Final Cover Composition Requirements	ongoing																								
212	Visual – 10.10		Buffer Zone Maintenance	ongoing	✓	C	NONE		✓	C	NONE																	
213	Water Conservation - 11.02		Plant Species	ongoing																								
214	Fire Service - 12.01		Brush Clearance Measures	ongoing	✓	C	NONE		✓	C	NONE																	
215																												
216	Air Quality & Noise Specialist																											
217																												
218																												

* C = Compliant, NC = Non-Compliant, FRN = Further Review Needed, R = Resolved

** See Appendix I for Comments

Checkmark = Condition or mitigation was monitored

/ = Yearly or non-ongoing monitoring frequency

Sunshine Canyon Landfill Mitigation Monitoring Summary - County (01-01-2013 through 03-31-2013)

Line #	Reference #	Mitigation #	County Mitigation Measures and Conditions Monitored by Discipline	Monitoring Frequency	1/16/2013	Status*	Further Review Needed/Comments**	Resolved*	2/1/2013	Status*	Further Review Needed/Comments**	Resolved*	2/13/2013	Status*	Further Review Needed/Comments**	Resolved*	2/27/2013	Status*	Further Review Needed/Comments**	Resolved*	3/13/2013	Status*	Further Review Needed/Comments**	Resolved*	3/20/2013	Status*	Further Review Needed/Comments**	Resolved*
219	Fugitive Dust - 45.F	45.F	Fugitive Dust Monitoring	ongoing	✓	C	NONE		✓	C	NONE					✓	C	NONE		✓	C	NONE						
220	Fugitive Dust - 45.I	45.I	Paved Roads-Cleaning	ongoing	✓	C	NONE		✓	C	NONE					✓	C	NONE		✓	C	NONE						
221	Fugitive Dust - 45.N	45.N	Report Submission-Dust/Odor	every quarter	/				/							/												
222	Air Quality Monitoring - 81	81	Air Quality Monitoring-Tests	ongoing	/				/							/												
223																												
224																												
225	Air Quality – 6.01		Fugitive Dust Aversion	ongoing	✓	C	NONE		✓	C	NONE					✓	C	NONE		✓	C	NONE						
226	Air Quality – 6.01		Working Face Requirements	ongoing	✓	C	NONE		✓	C	NONE					✓	C	NONE		✓	C	NONE						
227	Air Quality – 6.01		Erosion Control-Daily Cover	ongoing	✓	C	NONE		✓	C	NONE					✓	C	NONE		✓	C	NONE						
228	Air Quality – 6.01		Soil Stockpile Requirements	ongoing	✓	C	NONE		✓	C	NONE					✓	C	NONE		✓	C	NONE						
229	Air Quality – 6.01		Active Area Fill	ongoing	✓	C	NONE		✓	C	NONE					✓	C	NONE		✓	C	NONE						
230	Air Quality – 6.01		Soil Sealant	ongoing	✓	C	NONE		✓	C	NONE					✓	C	NONE		✓	C	NONE						
231	Air Quality – 6.01		Dust Emissions-Road Maintenance	ongoing	✓	C	NONE		✓	C	NONE					✓	C	NONE		✓	C	NONE						
232	Air Quality – 6.01		Access Roads-Paving	ongoing	✓	C	NONE		✓	C	NONE					✓	C	NONE		✓	C	NONE						
233	Air Quality – 6.01		Dust Generation-Dumping	ongoing	✓	C	NONE		✓	C	NONE					✓	C	NONE		✓	C	NONE						
234	Air Quality – 6.01		Water Tanks/Piping Maintenance	ongoing	✓	C	NONE		✓	C	NONE					✓	C	NONE		✓	C	NONE						

* C = Compliant, NC = Non-Compliant, FRN = Further Review Needed, R = Resolved

** See Appendix I for Comments

Checkmark = Condition or mitigation was monitored

/ = Yearly or non-ongoing monitoring frequency

Sunshine Canyon Landfill Mitigation Monitoring Summary - County (01-01-2013 through 03-31-2013)

Line #	Reference #	Mitigation #	County Mitigation Measures and Conditions Monitored by Discipline	Monitoring Frequency	1/16/2013	Status*	Further Review Needed/Comments**	Resolved*	2/1/2013	Status*	Further Review Needed/Comments**	Resolved*	2/13/2013	Status*	Further Review Needed/Comments**	Resolved*	2/27/2013	Status*	Further Review Needed/Comments**	Resolved*	3/13/2013	Status*	Further Review Needed/Comments**	Resolved*	3/20/2013	Status*	Further Review Needed/Comments**	Resolved*
235	Air Quality – 6.01		Wind Speed Monitoring	ongoing	✓	C	NONE		✓	C	NONE					✓	C	NONE		✓	C	NONE						
236	Air Quality – 6.01		Report Submission-Dust/Odor	every quarter	/				/							/				/								
237	Odor/Landfill Gas – 7.03		Odor/Landfill Gas Monitoring Program	ongoing	/				/							/				/								
238	Odor/Landfill Gas – 7.03		Landfill Surface Sampling	ongoing	/				/							/				/								
239	Odor/Landfill Gas – 7.03		Landfill Perimeter Air Samples	ongoing	/				/							/				/								
240	Odor/Landfill Gas – 7.03		Landfill Surface Monitoring	ongoing	/				/							/				/								
241	Odor/Landfill Gas – 7.03		LFG Collection System Monitoring	ongoing	/				/							/				/								
242	Noise – 9.01		Landfill Access/Operation	info	/				/							/				/								
243	Noise – 9.03		Landfill Equipment- Mufflers/Silencers	ongoing	✓	C	NONE		✓	C	NONE					✓	C	NONE		✓	C	NONE						
244	Admin Rpts/ Pgms-17.16		Air Quality Monitoring- Corrective Action Plan	ongoing	/				/							/				/								
245																												
246																												
247	Hydrology, Hazardous Waste / Risk of Upset																											
248																												
249																												
250	IMP - Part IV.E	IMP 4	Load Inspection-Random Manual	ongoing																								
251																												

* C = Compliant, NC = Non-Compliant, FRN = Further Review Needed, R = Resolved

** See Appendix I for Comments

Checkmark = Condition or mitigation was monitored

/ = Yearly or non-ongoing monitoring frequency

Sunshine Canyon Landfill Mitigation Monitoring Summary - County (01-01-2013 through 03-31-2013)

Line #	Reference #	Mitigation #	County Mitigation Measures and Conditions Monitored by Discipline	Monitoring Frequency	1/16/2013	Status*	Further Review Needed/Comments**	Resolved*	2/1/2013	Status*	Further Review Needed/Comments**	Resolved*	2/13/2013	Status*	Further Review Needed/Comments**	Resolved*	2/27/2013	Status*	Further Review Needed/Comments**	Resolved*	3/13/2013	Status*	Further Review Needed/Comments**	Resolved*	3/20/2013	Status*	Further Review Needed/Comments**	Resolved*
252	Groundwater - 3.05		Leachate Collection and Removal System	ongoing																								
253	Groundwater - 3.15		Underground Diesel Fuel Storage Tanks	ongoing	/	NA	NONE		/	NA	NONE						/	NA	NONE									
254	Fire Service - 12.02		On-site Fire Response Capabilities-Operating	ongoing	✓	C	NONE		✓	C	NONE						✓	FRN	I-d									
255	Fire Service - 12.03		On-site Fire Response Capabilities-Roads/Water	ongoing													✓	FRN	I-d									
256	Fire Service - 12.04		On-site Fuel Storage Tanks-Permit Issuance	ongoing																								
257	Fire Service - 12.05		Building Limits	ongoing	✓	C	NONE		✓	C	NONE						✓	C	NONE									
258	Fire Service - 12.06		Methane Gas Monitoring-On-site Structures	ongoing	✓	C	NONE		✓	C	NONE						✓	C	NONE									
259	Hazardous Materials – 13.02		Waste Load Checking Program	ongoing													✓	C	NONE									
260	Hazardous Materials – 13.05		Hazardous Waste Disposal	ongoing													✓	C	NONE									
261	Hazardous Materials – 13.10		Hazardous Waste-Procedures	ongoing													✓	C	NONE									
262	Hazardous Materials – 13.11		Spill Response Program	ongoing													✓	C	NONE									
263	Safety - 16.02		Injury and Illness Prevention Program	status													✓	C	NONE									
264	Safety - 16.03		Working Conditions-Monitoring	status													✓	C	NONE									
265	Safety - 16.04		Inspection Checklist-Work Area Exposure	status													✓	FRN	I-d									
266	Safety - 16.07		Accident/Injury Reports	status													✓	C	NONE									
267	Safety - 16.08		First-aid Kits	ongoing													✓	C	NONE									

* C = Compliant, NC = Non-Compliant, FRN = Further Review Needed, R = Resolved

** See Appendix I for Comments

Checkmark = Condition or mitigation was monitored

/ = Yearly or non-ongoing monitoring frequency

Sunshine Canyon Landfill Mitigation Monitoring Summary - County (01-01-2013 through 03-31-2013)

Line #	Reference #	Mitigation #	County Mitigation Measures and Conditions Monitored by Discipline	Monitoring Frequency	1/16/2013	Status*	Further Review Needed/Comments**	Resolved*	2/1/2013	Status*	Further Review Needed/Comments**	Resolved*	2/13/2013	Status*	Further Review Needed/Comments**	Resolved*	2/27/2013	Status*	Further Review Needed/Comments**	Resolved*	3/13/2013	Status*	Further Review Needed/Comments**	Resolved*	3/20/2013	Status*	Further Review Needed/Comments**	Resolved*
268	Safety - 16.10		Lockout/Blackout Procedures	status													✓	C	NONE									
269	Safety - 16.11		Personal Protective Equipment	status													✓	C	NONE									
270	Landfill Operation - 18.8		Prohibited Waste Procedures	ongoing													✓	C	NONE									
271																												
272	Archaeologist																											
273																												
274																												
275	Ecological Significance - 62	62	Archaeological/Paleontologica l Identification/Conservation	ongoing	/	NA	I-a		/	NA	I-b		/	NA	I-c		/	NA	I-d		/	NA	I-e					
276	IMP - Part VII.B	IMP 7	Archaeological/Paleontological	ongoing	/	NA	I-a		/	NA	I-b		/	NA	I-c		/	NA	I-d		/	NA	I-e					
277	Archaeological – 5.01		Archaeological Resurvey	ongoing	/	NA	I-a		/	NA	I-b		/	NA	I-c		/	NA	I-d		/	NA	I-e					
278	Archaeological – 5.02		Onsite Archaeologist	ongoing	/	NA	I-a		/	NA	I-b		/	NA	I-c		/	NA	I-d		/	NA	I-e					
279	Archaeological – 5.03		Onsite Paleontologist	ongoing	/	NA	I-a		/	NA	I-b		/	NA	I-c		/	NA	I-d		/	NA	I-e					
280	Archaeological – 5.04		Archaeological/Paleontologica l Identification Instruction	ongoing	/	NA	I-a		/	NA	I-b		/	NA	I-c		/	NA	I-d		/	NA	I-e					
281	Archaeological – 5.05		Archaeological Resource Curatorial	ongoing	/	NA	I-a		/	NA	I-b		/	NA	I-c		/	NA	I-d		/	NA	I-e					

* C = Compliant, NC = Non-Compliant, FRN = Further Review Needed, R = Resolved

** See Appendix I for Comments

Checkmark = Condition or mitigation was monitored

/ = Yearly or non-ongoing monitoring frequency

Appendix I - Ia-If

Further Review Needed-Comments

Appendix I-a

Further Review Needed-Comments

January 16, 2013 Site Visit

Discipline	City Condition Reference # / Mitigation #	County Condition Reference # / Mitigation #	Responsible Agency	Further Review Needed-Comments
Project Manager	M – 4.2.13 / 29, 30, 32, 34, 43		City Planning / SCL-LEA	Compliance with these mitigation measures, concerning landfill gas monitoring and odor control and detection, is being monitored by a multi-agency team led by the SCAQMD. Only obvious gas emission sources, lack of cover, or exposed trash resulting in odor and gas emissions observed during the monitoring visit will be reported.
	M-4.2.13 / 33		City Planning / SCL LEA	At the prior month's monitoring visit, the discharge flange on Blower C at Flare 8 was missing a gasket and was leaking gas. This leaking flange was repaired.
	M-4.9.3 / 109		City Planning / SCL LEA	On the January 16, 2013 site monitoring visit, Sierra Highway near the I-14 overpass was observed to be cleaned and free of illegal dumping and windblown litter. However, San Fernando Road south and Old Sepulveda Road south to the Roxford onramp had windblown litter along the roadway. This area was cleaned and litter was removed by the next monitoring visit.
		Visual - 10.11	County Planning / County Public Works / SCL LEA	See M-4.9.3 / 109 above.
		Odor /Landfill Gas/7.06	County Planning	See M-4.2.12 / 33 above.
		Amendment 45.N – 4.a, 4.c, 4.d	County Planning/ SCL-LEA, SCAQMD	See -M-4.2.13/29, 30, 32, 33, 34 and 43 above.
		Amendment 45.N – 5	County Planning/ SCL-LEA, SCAQMD	See -M-4.2.13/29, 30, 32, 33, 34 and 43 above.

Discipline	City Condition Reference # / Mitigation #	County Condition Reference #/ Mitigation #	Responsible Agency	Further Review Needed-Comments
Project Manager		Odor /Landfill Gas/ 7.04	County Planning / SCL LEA, SCAQMD	The piping brackets on Flare 1 compressor skid were missing bolts to securely hold down the piping in the event of an earthquake. All flare skids should have piping hold-down brackets checked in order to confirm that compressor skid piping will meet earthquake requirements.
		Surface Water / 2.15	County DPW EPD	Basin A had sediment and standing water from recent rain events. The section of the westside channel bottom that was broken had worsened due to uplifting. In the same area, the broken channel sidewalls had worsened and a new horizontal crack was observed in the sidewalls. The Basin D North drainage HDPE lined area was repaired and the drainage channel was no longer blocked by the HDPE material. Basin B was dry and had 4-6" of sediment around the outlet risers. The terminal basin had some water with approximately 3' or more of sediment at the outlet risers. The terminal basin exterior concrete sidewall cracks were worsening.
		Traffic/Circulation / 8.08	County DPW EPD	A program should be developed to charge differential fees for partially loaded trucks in order to avoid peak commuting hours, and this program should be provided to the County.
		Landfill Capacity / 27	County DPW EPD	See Traffic/Circulation / 8.08 above.

Discipline	City Condition Reference # / Mitigation #	County Condition Reference #/ Mitigation #	Responsible Agency	Further Review Needed-Comments
Project Manager		Revegetation /44.F	County Planning / SCL-LEA	The new interim vegetation has yellowed in some areas. The cause could be a lack of water or soil conditions. The cause for this condition should be investigated.
		Fugitive Dust / 45.F	County DPH	Blowing dust was observed coming from the bare soil areas adjacent to the Basin D North drainage and areas of the County top deck near Basin B. The gusty winds make dust control by water only not fully effective. These areas should be evaluated for the use of soil sealant to be applied to control dust in the windy season.
Civil and Geotechnical Engineer	M - 4.3.2 / 47		City Planning	This condition was not applicable at this time and will be reviewed when the next cell phase is initiated.
	M - 4.3.2 / 48		City Planning	See M - 4.3.2 / 47 above.
Hydrologist		Surface Water - 2.14	County DPW EPD / LARWQCB, SCL- LEA	It is recommended that the erosion plan, which should be a living document reflecting new measures installed to keep up with construction, be available for review onsite.
Biologist	M - 4.2.1 / 6		City Planning	See Revegetation /44.F above.
	M - 4.2.11 / 23		City Planning	See Revegetation /44.F above.
	M - 4.2.12		City Planning	See Revegetation /44.F above.

Discipline	City Condition Reference # / Mitigation #	County Condition Reference # / Mitigation #	Responsible Agency	Further Review Needed-Comments
Biologist	M - 4.4.1 / 60		City Planning	The County sage mitigation test site area has minimal sage established. The City South revised sage plan has not yet been implemented.
	M - 4.4.1 / 61		City Planning	See M - 4.4.1 / 60 above
		Biota - 4.42	County Planning	See Revegetation /44.F above.
		Visual - 10.08	County Planning	See Revegetation /44.F above.
		44.A - Temporary Hydroseed Vegetation	County Planning / SCL-LEA	See Revegetation /44.F above.
Air Quality and Noise Specialist	M – 4.2.12 / 25		City Planning	See Traffic/Circulation / 8.08 above.
Archaeologist	M – 4.19.1		City Planning	No undisturbed areas have been excavated. No areas that require archaeological surveys were part of the current activity.
		Ecological Significance-62	County Planning	See M – 4.19.1 above.
		IMP-7	County Planning	See M – 4.19.1 above.
		Archaeological – 5.01-5.05	County Planning	See M – 4.19.1 above.
Paleontologist	M – 4.19.2		City Planning	See M – 4.19.1 above.
		Ecological Significance-62	County Planning	See M – 4.19.1 above.
Paleontologist		IMP-7	County Planning	See M – 4.19.1 above.

Appendix I-b

Further Review Needed-Comments

February 1, 2013 Site Visit

Discipline	City Condition Reference # / Mitigation #	County Condition Reference # / Mitigation #	Responsible Agency	Further Review Needed-Comments
Project Manager	M – 4.2.13 / 29, 30, 32, 33, 34, 43		City Planning / SCL-LEA	Compliance with these mitigation measures, concerning landfill gas monitoring and odor control and detection, is being monitored by a multi-agency team led by the SCAQMD. Only obvious gas emission sources, lack of cover, or exposed trash resulting in odor and gas emissions observed during the monitoring visit will be reported.
	M-4.4.2 / 69		City Planning	There are still City of Los Angeles property transfer issues with the wetland and riparian mitigation at the Chatsworth Reservoir. The City is working on these issues and may have them resolved by August 2013. The Corps of Engineers has given an extension of time on the implementation of a mitigation program until the end of 2013. A new schedule reflecting the current conditions should be developed and provided to the City and County Planning Departments.
		Amendment 45.N-4.a, 4.c, 4.d	County Planning/ SCL-LEA, SCAQMD	See M – 4.2.13 / 29, 30, 32, 33, 34, 43 above.
		Amendment 45.N-5	County Planning/ SCL-LEA, SCAQMD	See M – 4.2.13 / 29, 30, 32, 33, 34, 43 above.

Discipline	City Condition Reference # / Mitigation #	County Condition Reference # / Mitigation #	Responsible Agency	Further Review Needed-Comments
Project Manager		Surface Water - 2.15	County DPW EPD	There was no change in conditions at Basin A, B, D and the Terminal Basin. There were no repairs made to the westside drainage as of this date.
		Traffic/Circulation / 8.08	County DPW EPD	A program should be developed to charge differential fees for partially loaded trucks in order to avoid peak commuting hours, and this program should be provided to the County Planning Department.
		Landfill Capacity / 27	County DPW EPD	See Traffic/Circulation / 8.08 above.
		Revegetation / 44.F	County Planning / SCL-LEA	The new interim vegetation has yellowed in some areas. The cause could be a lack of water or soil conditions. The cause could be lack of water or soil conditions. Also, the interim vegetation has not continued to germinate and fill in bare spots. The revegetation relies on rainfall, and lack of rain could be the reason for the absence of further germination. The landfill's consulting biologist should evaluate the recent revegetation results. A plan showing areas that will remain inactive for more than 180 days should be provided to the SCL-LEA and the County Department of Public Works.
		Fugitive Dust / 45.F	County DPH	Areas with no established vegetation should be monitored for fugitive dust and soil sealant applied as needed.

Discipline	City Condition Reference # / Mitigation #	County Condition Reference # / Mitigation #	Responsible Agency	Further Review Needed-Comments
Civil and Geotechnical Engineer	M - 4.1.1 / 5, 8		City Planning / SCL - LEA	Republic is evaluating options to stabilize an old landslide in the development of CC3A Part II. It is the current understanding that the remedial action may be to not excavate and remove all native material, but instead to place a stabilizing fill of up to 40 feet thick at the toe of the landslide. RWQCB prefers the placement of the fill versus removal of the native materials. Republic is currently having their engineering firm evaluate and develop the preferred engineering option. RWQCB will review and approve the final plans. It is the current understanding that reports will be supplied to the County and City planning departments, for informational purposes only, so that it can be certified that the reports have been prepared in accordance with the requirements of the CUP.
	M - 4.1.5 / 12, 13, 14		City Planning / SCL - LEA	See M - 4.1.1 / 5, 8 above.
	M - 4.3.2 / 47		City Planning / SCL - LEA	This condition was not applicable at this time and will be reviewed when the next cell phase is initiated.
	M - 4.3.2 / 48		City Planning / SCL - LEA	See M - 4.3.2 / 47 above.
		Geology - 1.05	LARWQCB / County DPW EPD	See M - 4.1.1 / 5, 8 above.
		Geology - 1.07	LARWQCB / County DPW EPD	See M - 4.1.1 / 5, 8 above.
		Geology - 1.18	LARWQCB / County DPW EPD	See M - 4.1.1 / 5, 8 above.
Civil and Geotechnical				

Discipline	City Condition Reference # / Mitigation #	County Condition Reference # / Mitigation #	Responsible Agency	Further Review Needed-Comments
Engineer	M - 4.18 / 178		City Planning/SCL LEA	A map showing areas that have reached their final elevation should be made available for agency and monitor reference.
Hydrologist	M - 4.3.1 / 36		City Planning	Since it is an evolving document, the drainage plan should be available onsite for agency and monitor reference.
	M - 4.3.1 / 37		City Planning	It is recommended that the erosion plan, which should be a living document reflecting new measures installed to keep up with construction, be available for review onsite.
	M - 4.3.1 / 39		City Planning	A map showing areas that have reached their final elevation should be made available for agency and monitor reference.
	M - 4.3.1 / 45		City Planning / SCL- LEA	It is recommended that the erosion prevention plan, which should be a living document to keep up with construction, be available for agency review.
	M - 4.3.1 / 46		City Planning	The preventative maintenance plan should be available onsite for review, along with inspection reports for the stormwater management facilities and structures.
		Surface Water / 2.03	County DPW EPD	The permanent drainage system should be designed and approved by the agencies.

Discipline	City Condition Reference # / Mitigation #	County Condition Reference # / Mitigation #	Responsible Agency	Further Review Needed-Comments
Hydrologist		Surface Water / 2.02	County DPW EPD	It is recommended that the erosion plan, which should be a living document reflecting new measures installed to keep up with construction, be available for review onsite.
		Surface Water / 2.08	County DPW EPD	See Surface Water / 2.02 above.
		Surface Water - 2.14	County DPW EPD / LARWQCB, SCL-LEA	See Surface Water / 2.02 above.
Biologist	M - 4.2.11 / 6		City Planning	See Revegetation /44.F above.
	M - 4.2.11 / 23		City Planning	See M - 4.2.11 / 6 above.
	M - 4.2.12		City Planning	See M - 4.2.11 / 6 above.
	M - 4.4.1 / 60		City Planning	The County Coastal Sage Mitigation Area was observed to have poor coverage and more erosion due to recent rains. Republic's consulting biologist should evaluate options to implement. The City Coastal Sage Mitigation Plans were finalized and are scheduled to start grading in February 2013. City South Deck "C" will be done this year. City South Decks "B" and "A" will be done in the following two years (2014 and 2015.)
	M - 4.4.1 / 61		City Planning	See M - 4.4.1 / 60 above.
		Biota- 4.27	SCL-LEA/CDFG	See M - 4.4.1 / 60 above.
		Biota - 4.42	County Planning	See Revegetation /44.F above.

Discipline	City Condition Reference # / Mitigation #	County Condition Reference # / Mitigation #	Responsible Agency	Further Review Needed-Comments
Biologist		Air Quality - 6.02	County Planning	Areas with no established vegetation should be monitored for fugitive dust and soil sealant applied where needed.
		Visual - 10.08	County Planning	See Revegetation /44.F above.
		44.A - Temporary Hydroseed Vegetation	SCL-LEA	See Revegetation /44.F above.
Archaeologist	M – 4.19.1		City Planning	No undisturbed areas have been excavated. No areas that require archaeological surveys were part of the current activity.
		Ecological Significance-62	County Planning	See M – 4.19.1 above.
		IMP-7	County Planning	See M – 4.19.1 above.
		Archaeological – 5.01-5.05	County Planning	See M – 4.19.1 above.
Paleontologist	M – 4.19.2		City Planning	See M – 4.19.1 above.
		Ecological Significance-62	County Planning	See M – 4.19.1 above.
		IMP-7	County Planning	See M – 4.19.1 above.

Appendix I-c

Further Review Needed-Comments

February 13, 2013 Site Visit

Discipline	City Condition Reference # / Mitigation #	County Condition Reference # / Mitigation #	Responsible Agency	Further Review Needed-Comments
Project Manager	M – 4.2.13 / 29, 30, 32, 33, 34, 43		City Planning / SCL-LEA	Compliance with these mitigation measures, concerning landfill gas monitoring and odor control and detection, is being monitored by a multi-agency team led by the SCAQMD. Only obvious gas emission sources, lack of cover, or exposed trash resulting in odor and gas emissions observed during the monitoring visit will be reported.
		Odor/Landfill Gas - 7.04	County Planning/SCL-LEA,SCAQMD	The Flare 8 inlet knockout vessel pressure relief valve discharge pipe was noted to have no weep hole and could accumulate water on the relief valve outlet.
		Amendment 45.N – 4.a, 4.c, 4.d	County Planning/SCL-LEA,SCAQMD	See -M-4.2.13/29,30,32,33,34 above.
		Amendment 45.N – 5	County Planning/SCL-LEA,SCAQMD	See -M-4.2.13/29,30,32,33,34 above.
		Revegetation /44.F	County Planning / SCL-LEA	A current revegetation plan to comply with erosion control, interim cover and temporary cover for inactive areas (180 days or more) meeting the requirements of this mitigation measure and City mitigation measures M-4.1.1 / 6, M-4.2.11 / 23, and M-4.2.12 should be developed and submitted to the City Department of Building and Safety and the City and County Planning Departments for approval.
Biologist	M - 4.2.11 / 6		City Planning	See Revegetation /44.F above.
	M - 4.2.11 / 23		City Planning	See Revegetation /44.F above.

Discipline	City Condition Reference # / Mitigation #	County Condition Reference # / Mitigation #	Responsible Agency	Further Review Needed-Comments
Biologist	M - 4.2.12		City Planning	See Revegetation /44.F above.
		Revegetation 44.A	County Planning / SCL-LEA	See Revegetation /44.F above.
	M - 4.4.1 / 60		City Planning	The City sage mitigation area was observed. The amount of topsoil stockpiled appeared to be inadequate. The implementation of the plans was placed on hold by Republic until more topsoil could be moved to Deck "C."
		Biota – 4.10	County Planning / County Forrester and Fire	The Big Cone Fir mitigation site was observed and tree growth was noted to be hampered by the chicken wire protective screens. The removal and/or replacement of these screens should be evaluated by Republic's biologist. The health of the trees is a concern.
		Biota- 4.27	County Planning , SCL-LEA/CDFG	The County Sage mitigation Area had minimal sage coverage. Soils type and erosion appeared to be the main cause for lack of sage revegetation. Employing erosion control methods, along with reseeded, could prove successful.
		Biota - 4.42	County Planning / SCL-LEA	See Revegetation /44.F above.
		44.A - Temporary Hydroseed Vegetation	County Planning / SCL-LEA	See Revegetation /44.F above.
		Geology – 1.13	County Planning	See Revegetation /44.F above.
		Geology – 1.14	County Planning	See Revegetation /44.F above.

Discipline	City Condition Reference # / Mitigation #	County Condition Reference #/ Mitigation #	Responsible Agency	Further Review Needed-Comments
Archaeologist	M – 4.19.1		City Planning	No undisturbed areas have been excavated. No areas that require archaeological or paleontological surveys were part of the current activity.
		Ecological Significance-62	County Planning	See M – 4.19.1 above.
		IMP-7	County Planning	See M – 4.19.1 above.
		Archaeological – 5.01-5.05	County Planning	See M – 4.19.1 above.
Paleontologist	M – 4.19.2		City Planning	See M – 4.19.1 above.
		Ecological Significance-62	County Planning	See M – 4.19.1 above.
		IMP-7	County Planning	See M – 4.19.1 above.

Appendix I-d

Further Review Needed-Comments

February 27, 2013 Site Visit

Discipline	City Condition Reference # / Mitigation #	County Condition Reference #/ Mitigation #	Responsible Agency	Further Review Needed-Comments
Project Manager	M – 4.2.13 / 29, 30, 32, 33, 34, 43		City Planning / SCL-LEA	Compliance with these mitigation measures, concerning landfill gas monitoring and odor control and detection, is being monitored by a multi-agency team led by the SCAQMD. Only obvious gas emission sources, lack of cover, or exposed trash resulting in odor and gas emissions observed during the monitoring visit will be reported.
		Amendment 45.N – 4.a, 4.c, 4.d	County Planning/SCL- LEA,SCAQMD	See -M-4.2.13/29,30,32,33,34 above.
		Amendment 45.N – 5	County Planning/SCL- LEA,SCAQMD	See -M-4.2.13/29,30,32,33,34 above.
		Surface Water / 2.15	County DPW EPD	Basin A had fallen tree debris in the center of the basin. There was minor sediment and standing water near the outlet risers. The westside drainage ditch still had a section of the bottom cracked and uplifting. A section of the sidewalls was still spalling and a horizontal crack in the sidewalls was observed. No repairs have been made since these conditions were first noted. The Basin D north drainage ditch had HDPE liner material partially blocking the flow. The eastside drainage ditch leading to Basin B had soil sloughing from the hillside into the ditch. The terminal basin exterior concrete sidewall cracks were worsening.

Discipline	City Condition Reference # / Mitigation #	County Condition Reference #/ Mitigation #	Responsible Agency	Further Review Needed-Comments
Project Manager		Revegetation – 44.F	County Planning / SCL-LEA	There was no new reseeding done on temporary slopes or inactive areas.
		Odor/Landfill Gas – 7.04	County Planning / SCL-LEA , SCAQMD	A significant amount of stockpiled soil was removed from the County Top Deck. It was also noted that the County area near the Temporary Flare, which normally had a gas odor, did not have an odor. The change in the odor in the area should be investigated to see If there is a correlation between stockpile depth and gas odors at the temporary flare location
		Odor/Landfill Gas – 7.06	County Planning / SCL-LEA , SCAQMD	See M – 4.2.13 / 29, 30, 32, 33, 34, 43 above.
		Odor/Landfill Gas – 7.07	County Planning / SCL-LEA , SCAQMD	See M – 4.2.13 / 29, 30, 32, 33, 34, 43 above.
		Traffic/Circulation – 8.08	County DPW EPD	A program should be developed to charge differential fees for partially loaded trucks in order to avoid peak commuting hours, and this program should be provided to the County Planning Department.
		Visual-10.11	County Planning	Sierra Highway near the I-14 overpass was observed to have litter on the east side of the road.
Civil and Geotechnical Engineer	M-4.1.1 / 4		City Planning	The temporary and final access road realignment design drawings for the grading of areas outside of the landfill footprint should be submitted to the City Department of Building and Safety for approval.

Discipline	City Condition Reference # / Mitigation #	County Condition Reference # / Mitigation #	Responsible Agency	Further Review Needed-Comments
Civil and Geotechnical Engineer	M-4.1.1 / 5		City Planning	The final design reports to stabilize an old landslide in the development of CC3A Part II should be submitted to the City Department of Building and Safety and the County Department of Public Works for review and compliance with the intent of City and County conditions and/or mitigation measures.
	M-4.1.2 / 8		City Planning	See M-4.1.1 / 5 above.
	M-4.1.5 / 12		City Planning	See M-4.1.1 / 5 above.
	M-4.1.5 / 13		City Planning	See M-4.1.1 / 5 above.
	M-4.1.5 / 14		City Planning	See M-4.1.1 / 5 above.
	M-4.3.2 / 47		City Planning	Not applicable at this time. This condition will be pertinent when the next phase of landfill line installation begins at which time the pertinent reports should be available for agencies and monitor reference.
	M-4.3.2 / 48		City Planning	See M-4.3.2 / 47 above.
	M - 4.18 / 178		City Planning/SCL LEA	A map showing areas that have reached their final elevation should be made available for agency and monitor reference.
		Geology – 1.05	LARWQCB / County DPW EPD	See M-4.1.1 / 5 above.
		Geology – 1.07	LARWQCB / County DPW EPD	See M-4.1.1 / 5 above.
		Geology – 1.18	LARWQCB / County DPW EPD	See M-4.1.1 / 5 above.
Biologist	M - 4.2.11 / 6		City Planning	See Revegetation /44.F above.

Discipline	City Condition Reference # / Mitigation #	County Condition Reference #/ Mitigation #	Responsible Agency	Further Review Needed-Comments
Biologist	M - 4.2.11 / 23		City Planning	See Revegetation /44.F above.
	M - 4.2.12		City Planning	See Revegetation /44.F above.
		Revegetation – 44.A	County Planning / SCL-LEA	See Revegetation /44.F above.
Hydrology, Hazardous Waste / Risk of Upset	M - 4.9.4 (125)		City Planning / SCL-LEA	The south entrance gate in the oil field 100 acre buffer was unlocked.
		Fire Service 12.02	County Forester and Fire	One water truck was observed not having a fire hose. All trucks should be equipped with fire hoses.
		Safety 16.04	County Planning , SCL-LEA	A makeshift ladder using pallets was observed in the westside drainage ditch. This should be replaced with a real ladder, if needed.
Archaeologist	M – 4.19.1		City Planning	No undisturbed areas have been excavated. No areas that require archaeological or paleontological surveys were part of the current activity.
		Ecological Significance-62	County Planning	See M – 4.19.1 above.
		IMP-7	County Planning	See M – 4.19.1 above.
		Archaeological – 5.01-5.05	County Planning	
Paleontologist	M – 4.19.2		City Planning	See M – 4.19.1 above.
		Ecological Significance-62	County Planning	See M – 4.19.1 above.
Paleontologist		IMP-7	County Planning	See M – 4.19.1 above.

Appendix I-e

Further Review Needed-Comments

March 13, 2013 Site Visit

Discipline	City Condition Reference # / Mitigation #	County Condition Reference # / Mitigation #	Responsible Agency	Further Review Needed-Comments
Project Manager	M – 4.2.13 / 29, 30, 32, 34, 43		City Planning / SCL-LEA	Compliance with these mitigation measures, concerning landfill gas monitoring and odor control and detection, is being monitored by a multi-agency team led by the SCAQMD. Only obvious gas emission sources, lack of cover, or exposed trash resulting in odor and gas emissions observed during the monitoring visit will be reported.
	M-4.2.13 / 33		City Planning/ SCL-LEA	The Temporary Flare and Flare 9 were observed, and no odors were detected in the flare areas.
	M-4.9.3 / 109		City Planning / SCL-LEA	Paper and debris were noted between the San Fernando Road block wall and the exterior wall of the terminal basin.
		Litter Control 46.A-D	County Planning / SCL-LEA, County DPW EPD	See M-4.9.3 / 109 above.
		Amendment 45.N – 4.a, 4.c, 4.d	County Planning/SCL-LEA, SCAQMD	See -M-4.2.13/29, 30, 32, 33, 34 and 43 above.
		Amendment 45.N – 5	County Planning/SCL-LEA, SCAQMD	See -M-4.2.13/29, 30, 32, 33, 34 and 43 above.

Discipline	City Condition Reference # / Mitigation #	County Condition Reference #/ Mitigation #	Responsible Agency	Further Review Needed-Comments
Project Manager		Revegetation /44.F	SCL-LEA	No new hydroseeding has occurred since the last site monitoring. The previously hydroseeded City north slopes were observed to be yellow and they appeared to have the vegetation dying, possibly due to a lack of water. The permanent natural hillsides behind Flare 9 and the gas-to-energy site had been hydroseeded last year but had no established vegetation. These permanent slopes should be revegetated.
		Surface Water – 2.15	County DPW EPD	Basin A was dry with approximately 3-4" of sediment near the outlet risers. Landslide material was observed in the middle of the basin. The native drainage area in back of the basin was observed to be in good condition. The inlet pipes from the westside drainage were partially blocked with sediment and tumbleweeds. The Basin D North drainage had areas of the drainage ditch's flow being blocked by the liner material that was windblown and clumped. Basin B was dry with 2-3 inches of sediment near the outlet standpipes. Windblown material was observed in the back corners near the native hillsides. The terminal basin had standing water and approximately 5-6 feet of sediment at the outlet standpipes. Paper and plastic debris was also observed at the eastside of the exterior wall of the basin.

Discipline	City Condition Reference # / Mitigation #	County Condition Reference #/ Mitigation #	Responsible Agency	Further Review Needed-Comments
		Visual – 10.11	County DPW EPD SCL-LEA	Blown debris was noted on the eastside of Sierra Highway near the I-14 overpass. The westside of Sierra Highway was clean.
Biologist	M - 4.2.11 / 6		City Planning	See Revegetation /44.F above.
	M - 4.2.11 / 23		City Planning	See Revegetation /44.F above.
	M - 4.2.12		City Planning	See Revegetation /44.F above.
	M - 4.4.1 / 60		City Planning	The City sage mitigation area was observed. Additional topsoil was moved to the City Top Deck C for use in the sage mitigation. The construction is scheduled to start within days.
		Geology-1.13	County DPW EPD	See Revegetation /44.F above.
		Biota - 4.42	County Planning	See Revegetation /44.F above.
		44.A - Temporary Hydroseed Vegetation	County Planning / SCL-LEA	See Revegetation /44.F above.
		Visual – 10.08	County Planning	See Revegetation /44.F above.
Archaeologist	M – 4.19.1		City Planning	No undisturbed areas have been excavated. No areas that require archaeological surveys were part of the current activity.
		Ecological Significance-62	County Planning	See M – 4.19.1 above.
		IMP-7	County Planning	See M – 4.19.1 above.
		Archaeological – 5.01-5.05	County Planning	See M – 4.19.1 above.

Discipline	City Condition Reference # / Mitigation #	County Condition Reference #/ Mitigation #	Responsible Agency	Further Review Needed-Comments
Paleontologist	M – 4.19.2		City Planning	See M – 4.19.1 above.
		Ecological Significance-62	County Planning	See M – 4.19.1 above.
		IMP-7	County Planning	See M – 4.19.1 above.

Appendix I-f

Further Review Needed-Comments

March 20, 2013 Site Visit

Discipline	City Condition Reference # / Mitigation #	County Condition Reference #/ Mitigation #	Responsible Agency	Further Review Needed-Comments
Project Manager	Q – C.10.c		City Planning / SCL-LEA	The gas-to-energy developer, DTE, had permitting issues which are now resolved. DTE is now proceeding with the gas-to-energy facility. A schedule showing start of construction through completion and start of energy sales should be developed and provided to the City and County Planning Departments.
	M – 4.2.13 / 29, 30, 32, 33, 34, 43		City Planning / SCL-LEA	Compliance with these mitigation measures, concerning landfill gas monitoring and odor control and detection, is being monitored by a multi-agency team led by the SCAQMD. Only obvious gas emission sources, lack of cover, or exposed trash resulting in odor and gas emissions observed during the monitoring visit will be reported.
		Amendment 45.N – 4.a, 4.c, 4.d	County Planning/SCL- LEA,SCAQMD	See -M-4.2.13/29, 30, 32, 33, 34 and 43 above.
		Amendment 45.N – 5	County Planning/SCL- LEA,SCAQMD	See -M-4.2.13/29, 30, 32, 33, 34 and 43 above.
Civil and Geotechnical Engineer	M-4.1.1 / 4		City Planning	Grading design drawings for the temporary and ultimate realignment of the access road should be provided to the City of Los Angeles Department of Building and Safety and the City and County Planning Departments.

Discipline	City Condition Reference # / Mitigation #	County Condition Reference # / Mitigation #	Responsible Agency	Further Review Needed-Comments
Civil and Geotechnical Engineer	M-4.1.1 / 5		City Planning	The final design reports to stabilize an old landslide in the development of CC3A Part II should be submitted to the City Department of Building and Safety and the County Department of Public Works for review and compliance with the intent of City and County conditions and/or mitigation measures.
	M-4.1.2 / 8		City Planning	See M-4.1.1 / 5 above.
	M-4.1.5 / 12		City Planning	See M-4.1.1 / 5 above.
	M-4.1.6 / 15		City Planning	See M-4.1.1 / 5 above.
	M-4.3.2 / 47		City Planning	Not applicable at this time. This condition will be pertinent when the next phase of landfill liner installation begins at which time the pertinent reports should be available for agencies and monitor reference.
	M-4.3.2 / 48		City Planning	See M-4.3.2 / 47 above.
		Geology – 1.05	LARWQCB / County DPW EPD	See M-4.1.1 / 5 above.
		Geology – 1.07	LARWQCB / County DPW EPD	See M-4.1.1 / 5 above.
		Geology - 1.18	LARWQCB / County DPW EPD	See M-4.1.1 / 5 above.
		Groundwater – 3.02	LARWQCB / County DPW EPD	This condition will be monitored when liner construction begins.
		Groundwater – 3.04	LARWQCB / County DPW EPD	See 3.02 above.
		Groundwater – 3.09	LARWQCB / County DPW EPD	See 3.02 above.

Discipline	City Condition Reference # / Mitigation #	County Condition Reference #/ Mitigation #	Responsible Agency	Further Review Needed-Comments
Hydrology, Hazardous Waste / Risk of Upset	M - 4.9.4 / 125		City Planning / SCL-LEA	The south entrance gate in the oil field 100 acre buffer was unlocked.
Archaeologist	M - 4.19.1 / 183		City Planning	No undisturbed areas have been excavated. No areas that require archaeological and paleontological surveys were part of the current activity.
		Ecological Significance-62	County Planning	See M - 4.19.1 above.
		IMP-7	County Planning	See M - 4.19.1 above.
		Archaeological - 5.01-5.05	County Planning	See M - 4.19.1 above.
Paleontologist		Ecological Significance-62	County Planning	See M - 4.19.1 above.
		IMP-7	County Planning	See M - 4.19.1 above.

Appendix II

Relevant Site Photos

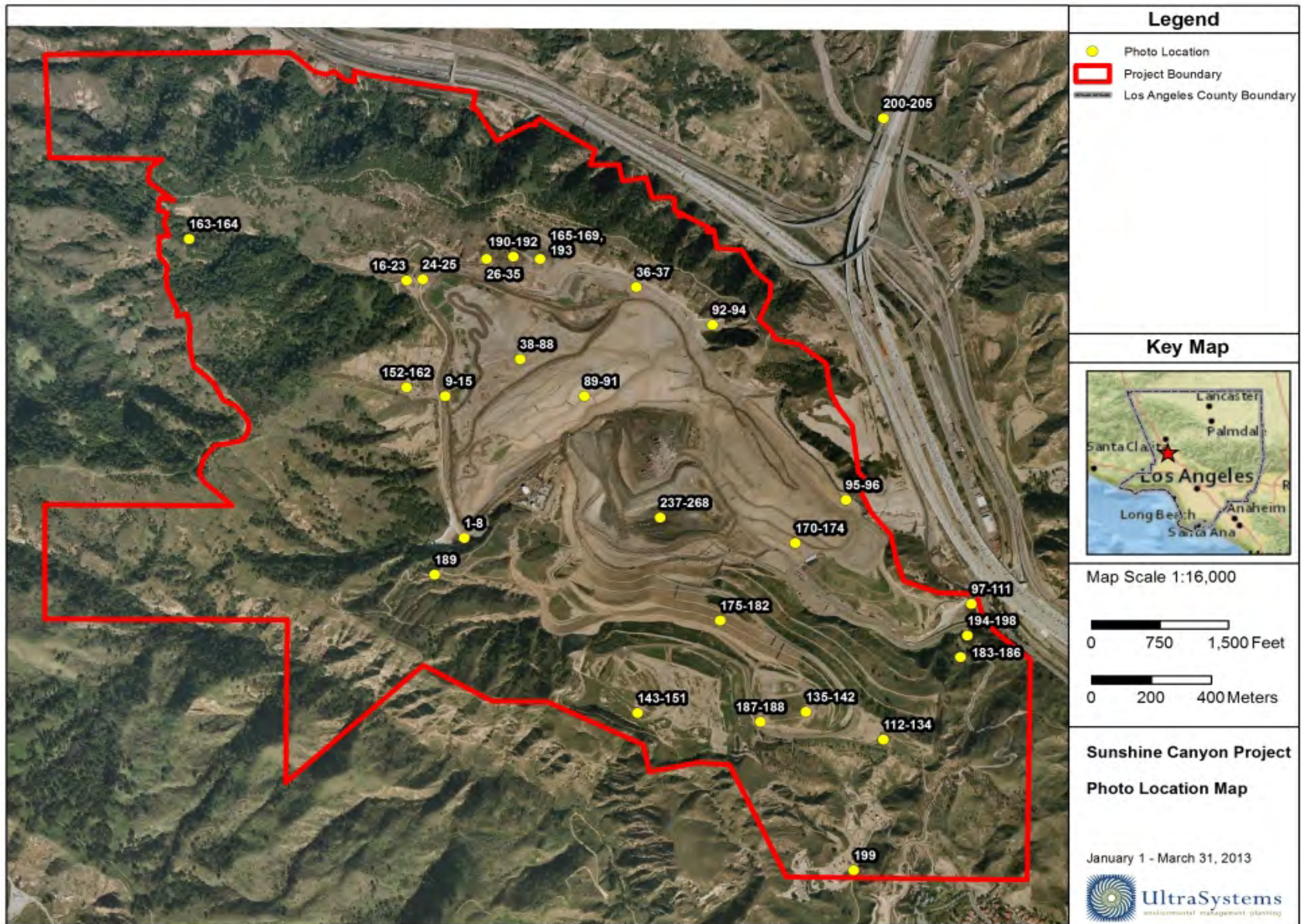




Photo 1: Basin A: January 16, 2013



Photo 2: Basin A: January 16, 2013



Photo 3: Basin A: February 27, 2013



Photo 4: Basin A: February 27, 2013



Photo 5: Basin A: March 13, 2013



Photo 6: Basin A: Basin A: March 13, 2013



Photo 7: Basin A: Basin A: March 13, 2013



Photo 8: Basin A Inlet: Basin A: March 13, 2013



Photo 9: Westside Drainage: January 16, 2013



Photo 10: Westside Drainage: January 16, 2013



Photo 11: Westside Drainage: January 16, 2013



Photo 12: Westside Drainage: February 27, 2013



Photo 13: Westside Drainage: February 27, 2013



Photo 14: Westside Drainage: February 27, 2013



Photo 15: Westside Drainage: February 27, 2013



Photo 16: Material Storage Area: January 16, 2013



Photo 17: Material Storage Area: January 16, 2013



Photo 18: Material Storage Area: February 27, 2013



Photo 19: Material Storage Area: February 27, 2013



Photo 20: Material Storage Area: March 13, 2013



Photo 21: Material Storage Area: March 13, 2013



Photo 22: Material Storage Area: March 13, 2013



Photo 23: Material Storage Area: March 13, 2013



Photo 24: Basin D: March 13, 2013



Photo 25: Basin D: March 13, 2013



Photo 26: Basin D North Drainage: January 16, 2013



Photo 27: Basin D North Drainage: January 16, 2013



Photo 28: Basin D North Drainage: February 27, 2013



Photo 29: Basin D North Drainage: February 27, 2013



Photo 30: Basin D North Drainage: February 27, 2013



Photo 31: Basin D North Drainage: March 13, 2013



Photo 32: Basin D North Drainage: March 13, 2013



Photo 33: Basin D North Drainage: March 13, 2013



Photo 34: Basin D North Drainage Blowing Dust: January 16, 2013



Photo 35: Basin D North Drainage Blowing Dust: January 16, 2013



Photo 36: County Top Deck Blowing Dust: January 16, 2013



Photo 37: County Top Deck Blowing Dust: January 16, 2013



Photo 38: County Top Deck: January 16, 2013



Photo 39: County Top Deck: January 16, 2013



Photo 40: County Top Deck: January 16, 2013



Photo 41: County Top Deck: January 16, 2013



Photo 42: County Top Deck: January 16, 2013



Photo 43: County Top Deck: January 16, 2013



Photo 44: County Top Deck: February 1, 2013



Photo 45: County Top Deck: February 1, 2013



Photo 46: County Top Deck: February 1, 2013



Photo 47: County Top Deck: February 1, 2013



Photo 48: County Top Deck: February 1, 2013



Photo 49: County Top Deck: February 1, 2013



Photo 50: County Top Deck: February 1, 2013



Photo 51: County Top Deck: February 13, 2013



Photo 52: County Top Deck: February 13, 2013



Photo 53: County Top Deck: February 13, 2013



Photo 54: County Top Deck: February 13, 2013



Photo 55: County Top Deck: February 13, 2013



Photo 56: County Top Deck: February 13, 2013



Photo 57: County Top Deck: February 13, 2013



Photo 58: County Top Deck: February 13, 2013



Photo 59: County Top Deck: February 27, 2013



Photo 60: County Top Deck: February 27, 2013



Photo 61: County Top Deck: February 27, 2013



Photo 62: County Top Deck: February 27, 2013



Photo 63: County Top Deck: February 27, 2013



Photo 64: County Top Deck: February 27, 2013



Photo 65: County Top Deck: February 27, 2013



Photo 66: County Top Deck: February 27, 2013



Photo 67: County Top Deck: March 13, 2013



Photo 68: County Top Deck: March 13, 2013



Photo 69: County Top Deck: March 13, 2013



Photo 70: County Top Deck: March 13, 2013



Photo 71: County Top Deck: March 13, 2013



Photo 72: County Top Deck: March 13, 2013



Photo 73: County Top Deck: March 13, 2013



Photo 74: County Top Deck: March 13, 2013



Photo 75: County Top Deck: March 13, 2013



Photo 76: County Stockpile Top Deck: March 13, 2013



Photo 77: County Stockpile Top Deck: March 13, 2013



Photo 78: County Stockpile Top Deck: March 13, 2013



Photo 79: County Stockpile Top Deck: March 13, 2013



Photo 80: County Stockpile Top Deck: March 13, 2013



Photo 81: County Stockpile Top Deck: March 20, 2013



Photo 82: County Stockpile Top Deck: March 20, 2013



Photo 83: County Stockpile Top Deck: March 20, 2013



Photo 84: County Stockpile Top Deck: March 20, 2013



Photo 85: County Stockpile Top Deck: March 20, 2013



Photo 86: County Stockpile Top Deck: March 20, 2013



Photo 87: County Stockpile Top Deck: March 20, 2013



Photo 88: County Stockpile Top Deck: March 20, 2013



Photo 89: County Lower Deck: February 1, 2013



Photo 90: County Lower Deck: February 1, 2013



Photo 91: City Well Drilling: March 13, 2013



Photo 92: Basin B: January 16, 2013



Photo 93: Basin B: February 27, 2013



Photo 94: Basin B: March 13, 2013



Photo 95: Eastside Perimeter Drainage: January 16, 2013



Photo 96: Eastside Perimeter Drainage Repair: January 16, 2013



Photo 97: Terminal Basin: January 16, 2013



Photo 98: Terminal Basin: February 13, 2013



Photo 99: Terminal Basin: February 27, 2013



Photo 100: Terminal Basin: February 27, 2013



Photo 101: Terminal Basin: February 27, 2013



Photo 102: Terminal Basin: February 27, 2013



Photo 103: Terminal Basin Inlet: March 13, 2013



Photo 104: Terminal Basin: March 13, 2013



Photo 105: Terminal Basin: March 13, 2013



Photo 106: Terminal Basin: March 13, 2013



Photo 107: Terminal Basin: March 13, 2013



Photo 108: Terminal Basin: March 13, 2013



Photo 109: Terminal Basin: March 13, 2013



Photo 110: Terminal Basin: March 13, 2013



Photo 111: Terminal Basin: March 13, 2013



Photo 112: City Top Deck C: January 16, 2013



Photo 113: City Top Deck C: January 16, 2013



Photo 114: City Top Deck C: February 1, 2013



Photo 115: City Top Deck C: February 1, 2013



Photo 116: City Top Deck C: February 1, 2013



Photo 117: City Top Deck C: February 1, 2013



Photo 118: City Top Deck C: February 1, 2013



Photo 119: City Top Deck C: February 1, 2013



Photo 120: City Top Deck C: February 1, 2013



Photo 121: City Top Deck C: February 1, 2013



Photo 122: City Top Deck C: February 1, 2013



Photo 123: City Top Deck C: February 1, 2013

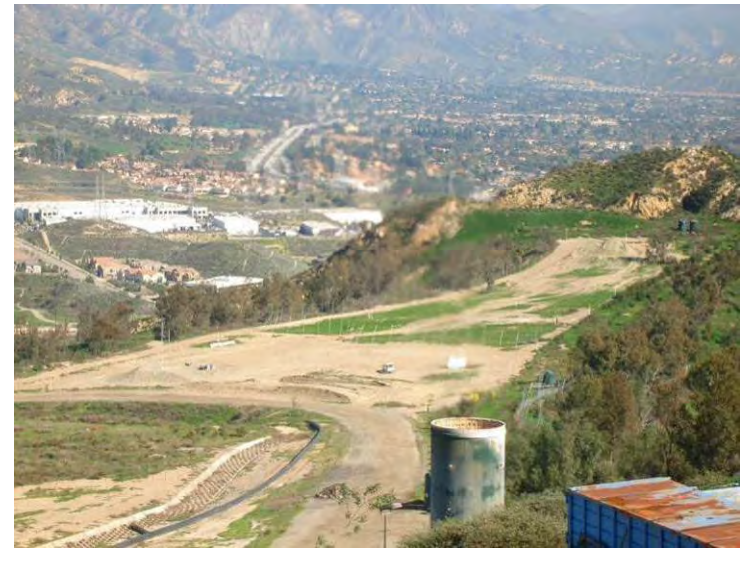


Photo 124: City South Deck C: February 13, 2013



Photo 125: City Top Deck C: February 27, 2013



Photo 126: City Top Deck C: March 13, 2013



Photo 127: City Top Deck C: March 13, 2013



Photo 128: City Top Deck C: March 13, 2013



Photo 129: City Top Deck C: March 13, 2013



Photo 130: City Top Deck C: March 13, 2013



Photo 131: City Top Deck C: March 13, 2013



Photo 132: City Top Deck C Vegetation: February 1, 2013



Photo 133: City Top Deck C Vegetation: February 1, 2013



Photo 134: City Top Deck C Vegetation: February 1, 2013



Photo 135: City Top Deck B: February 1, 2013



Photo 136: City Top Deck B: February 1, 2013



Photo 137: City Top Deck B: February 1, 2013



Photo 138: City Top Deck B: February 1, 2013



Photo 139: City Top Deck B: February 1, 2013



Photo 140: City Top Deck B Vegetation: February 1, 2013



Photo 141: City Top Deck B Vegetation: February 1, 2013



Photo 142: City Top Deck B Vegetation: February 1, 2013



Photo 143: City Top Deck A: February 1, 2013



Photo 144: City Top Deck A: February 1, 2013



Photo 145: City Top Deck A: February 1, 2013



Photo 146: City Top Deck A: February 1, 2013



Photo 147: City Top Deck A: February 1, 2013



Photo 148: City South Deck A: February 13, 2013



Photo 149: City South Deck A: February 13, 2013



Photo 150: City South Deck A: February 13, 2013



Photo 151: City South Deck A: February 13, 2013



Photo 152: County Sage Mitigation Area: February 13, 2013



Photo 153: County Sage Mitigation Area: February 13, 2013



Photo 154: County Sage Mitigation Area: February 13, 2013



Photo 155: County Sage Mitigation Area: February 13, 2013



Photo 156: County Sage Mitigation Area: February 13, 2013



Photo 157: County Sage Mitigation Area: February 13, 2013



Photo 158: County Sage Mitigation Area: February 13, 2013



Photo 159: County Sage Mitigation Area: March 13, 2013



Photo 160: County Sage Mitigation Area: March 13, 2013



Photo 161: County Sage Mitigation Area: March 13, 2013



Photo 162: County Sage Mitigation Area: March 13, 2013



Photo 163: Big Cone Fir Mitigation: February 13, 2013



Photo 164: Big Cone Fir Mitigation: February 13, 2013



Photo 165: Hillside Behind Flare 9: March 13, 2013



Photo 166: Hillside Behind Flare 9: March 13, 2013



Photo 167: Hillside Behind Flare 9: March 13, 2013



Photo 168: Hillside Behind Gas to Energy Site: March 13, 2013



Photo 169: Hillside Behind Gas to Energy Site: March 13, 2013



Photo 170: City North Slope Revegetation: March 13, 2013



Photo 171: City North Slope Revegetation: March 13, 2013



Photo 172: City North Slope Revegetation: March 13, 2013



Photo 173: City Cell CC2A: January 16, 2013



Photo 174: City Cell CC2A New Seed Mix Vegetation: January 16, 2013



Photo 175: City South Slope Vegetation: March 13, 2013



Photo 176: City South Slope Revegetation: March 13, 2013



Photo 177: Site – City South: February 1, 2013



Photo 178: Site – City South: February 1, 2013



Photo 179: Site – City South: February 1, 2013



Photo 180: Site – City South: February 1, 2013



Photo 181: Main Access Road: February 27, 2013



Photo 182: Main Access Road: February 27, 2013



Photo 183: Conceptual Access Road Route Area: February 27, 2013



Photo 184: Conceptual Access Road Route Area: February 27, 2013



Photo 185: Conceptual Access Road Route Area: February 27, 2013



Photo 186: Conceptual Access Road Route Area: February 27, 2013



Photo 187: Flare 1 Piping: January 16, 2013



Photo 188: Flare 1 Blowers: January 16, 2013



Photo 189: Flare 3 Blowers: February 27, 2013



Photo 190: Flare 8: January 16, 2013



Photo 191: Flare 8 Blower Skid: February 13, 2013



Photo 192: Flare 8 Blower Skid: February 13, 2013



Photo 193: Flare 9: January 16, 2013



Photo 194: Liquids Handling Facility: March 13, 2013



Photo 195: Liquids Handling Facility: March 13, 2013



Photo 196: Leachate Treatment Electrical Lines: February 27, 2013



Photo 197: Leachate Treatment Electrical Lines: February 27, 2013



Photo 198: Leachate Treatment Electrical Lines: March 13, 2013



Photo 199: Oil Field Gate: February 27, 2013



Photo 200: Sierra Highway Near I-14 Overpass: January 16, 2013



Photo 201: Sierra Highway Near I-14 Overpass: January 16, 2013



Photo 202: Sierra Highway Near I-14 Overpass: February 27, 2013



Photo 203: Sierra Highway Near I-14 Overpass: February 27, 2013



Photo 204: Sierra Highway Near I-14 Overpass: February 27, 2013



Photo 205: Sierra Highway Near I-14 Overpass: March 13, 2013



Photo 206: Site: January 16, 2013



Photo 207: Site: January 16, 2013



Photo 208: Site: January 16, 2013



Photo 209: Site: January 16, 2013



Photo 210: Site: January 16, 2013



Photo 211: Site: January 16, 2013



Photo 212: Site: January 16, 2013



Photo 213: Site: February 1, 2013



Photo 214: Site: February 1, 2013



Photo 215: Site: February 1, 2013



Photo 216: Site: February 1, 2013



Photo 217: Site: February 1, 2013



Photo 218: Site - County Area: February 13, 2013



Photo 219: Site - County Area: February 13, 2013



Photo 220: Site: February 27, 2013



Photo 221: Site: February 27, 2013



Photo 222: Site: February 27, 2013



Photo 223: Site: February 27, 2013



Photo 224: Site: February 27, 2013



Photo 225: Site: February 27, 2013



Photo 226: Site: March 13, 2013



Photo 227: Site: March 13, 2013



Photo 228: Site: March 13, 2013



Photo 229: Site: March 13, 2013



Photo 230: Site: March 13, 2013



Photo 231: Site: March 20, 2013



Photo 232: Site: March 20, 2013

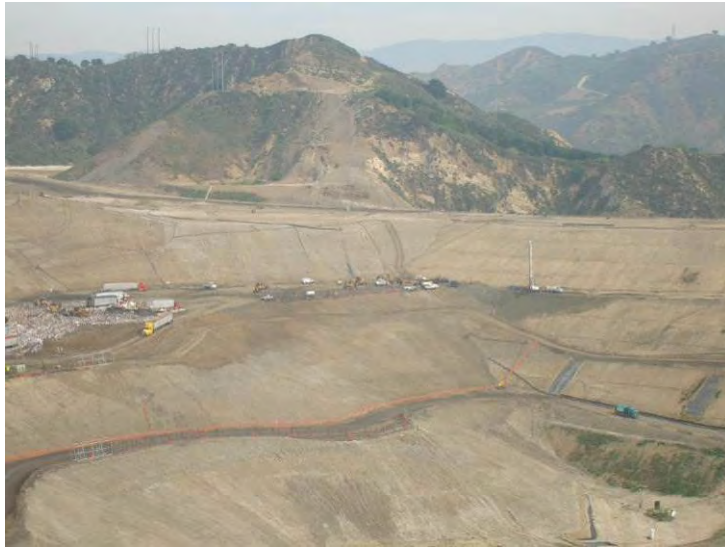


Photo 233: Site: March 20, 2013



Photo 234: Site: March 20, 2013



Photo 235: Site: March 20, 2013



Photo 236: Site: March 20, 2013



Photo 237: Working Face: January 16, 2013



Photo 238: Working Face: January 16, 2013



Photo 239: Working Face: January 16, 2013



Photo 240: Working Face: January 16, 2013



Photo 241: Working Face: February 1, 2013



Photo 242: Working Face: February 1, 2013



Photo 243: Working Face: February 1, 2013

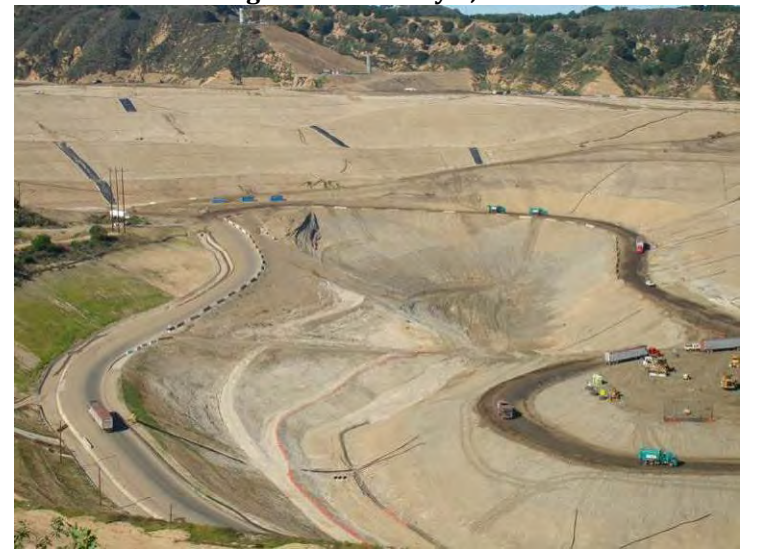


Photo 244: Working Face: February 13, 2013



Photo 245: Working Face: February 13, 2013



Photo 246: Working Face: February 13, 2013



Photo 247: Working Face: February 13, 2013



Photo 248: Working Face: February 27, 2013



Photo 249: Working Face: February 27, 2013



Photo 250: Working Face: February 27, 2013



Photo 251: Working Face: February 27, 2013



Photo 252: Working Face: February 27, 2013



Photo 253: Working Face: February 27, 2013



Photo 254: Working Face: March 13, 2013



Photo 255: Working Face: March 13, 2013



Photo 255: Working Face: March 13, 2013



Photo 257: Working Face: March 13, 2013



Photo 258: Working Face: March 13, 2013



Photo 259: Working Face: March 13, 2013



Photo 260: Working Face: March 13, 2013



Photo 261: Working Face: March 20, 2013



Photo 262: Working Face: March 20, 2013



Photo 263: Working Face: March 20, 2013

Appendix III

Quarterly Site Visits: Site Visit Attendees by Date of Site Visit/Mitigation Monitoring Site Reports

UltraSystems Staff; Field of Expertise:

James Aidukas; Project Manager, Permitting and Operations/ Engineer

**Mike Lindsay; Air Quality, Noise, Vehicle Emissions, Environmental Specialist/
Engineer**

Susan Foster; Hazardous Waste–Risk of Upset/ Engineer

Elizabeth Kempton; Biological Resources/ Biologist

SES Staff; Field of Expertise:

Tarik Hadj-Hamou; Civil/ Geotechnical Engineer

Ian Hutchison; Hydrologist/ Engineer


January Site Visits

January 16, 2013: James Aidukas (UltraSystems), Mike Lindsay (UltraSystems)

February 1, 2013: James Aidukas (UltraSystems), Mike Lindsay (UltraSystems), Tarik Hadj-Hamou (SES), Elizabeth Kempton (UltraSystems)



**SUNSHINE CANYON LANDFILL
MITIGATION MONITORING SITE REPORT**

Monitor: James Aidukas	Page: 1 of 1
Discipline: Project Manager	Date: January 16, 2013
Site Conditions: Clear, ~55° F, 20-30 MHP gusty winds	
SITE LOG	
<p>Republic site manager: Anthony Bertrand</p> <p>Met with John Nelson (LADPW) and Mike Lindsay (UltraSystems) at 9:00 am at the landfill office and signed in. UEI accompanied by John Nelson proceeded to monitor the following areas:</p> <ul style="list-style-type: none"> • Basin A had sediment and standing water from recent rain events. • The section of the westside channel concrete bottom that was broken had worsened due to uplifting. The area with the broken channel side had worsened. A new horizontal crack was observed. • The Basin D North drainage HDPE lined area was repaired and the drainage channel was no longer blocked by the HDPE material. • Blowing dust was observed coming from the bare soil area adjacent to the Basin D North drainage. • Basin B was dry and had 4-6" of sediment around the outlet risers. • The City North area that was hydroseeded with the new seed mix was turning yellow, possibly from a lack of water. • The erosion of soil from the eastside drainage sidewall top was repaired by the re-grading. Soil was accumulating behind the eastside drainage asphalt humps. • The terminal basin had some water with approximately 1' or more of sediment at the outlet risers. • Sierra Highway near the I-14 overpass was cleaned. • San Fernando Road south and Old Sepulveda Road south to the Roxford onramp had blown litter along the roadway. • The leaking discharge flange on Blower C at Flare 8 was repaired. <p>Flare Operating Conditions:</p> <ul style="list-style-type: none"> • Temporary Flare - 1700° F, 1554 SCFM, -56.05" WC vacuum, 35% methane • Flare 9 - 1665° F, 3137 SCFM, -55.84 WC vacuum, 150' outlet pressure, 44.8% methane • Flare 8 - 1667° F, 3140 SCFM, -70" WC vacuum, 34% methane • Flare 1 - 1671° F, 3705 SCFM, 23% methane • Flare 3 - 1690° F, 3753 SCFM, 35% methane 	
FURTHER REVIEW NEEDED	
COMMENTS	
<p>After the site monitoring, John Nelson and the UEI team met with Achaya Kelapanda and discussed gas recovery operations and CO detected at flares.</p>	
<p>Signed: </p>	



**SUNSHINE CANYON LANDFILL
MITIGATION MONITORING
SITE REPORT**

Monitor: <u>Mike Lindsay</u>	PAGE <u>1</u> OF <u>1</u>
Discipline: <u>Environmental Engineer</u>	Date: <u>01-16-13</u>
Site Conditions: <u>Sunny, clear, windy, 43-66°F, 15-30 mph</u>	
SITE LOG	
1. Met with John Nelson (LACOPW), Jim Aidukas (UltraSystems).	
2. Observed Sediment Basin A to be clear, with some rock, soil and standing water.	
3. Westside drainage ditch still needs trees and brush cleared, concrete cracks and spalling need repair.	
4. Storage area was organized; low pending depression was filled.	
5. Northwest drainage ditch plastic liner has been repaired.	
6. Flare 9 operating at 3,137 SCFM, 1665°F (one blower). Inlet gas sample: CH ₄ =38%Vol, O ₂ =0.8%Vol, CO=500+ppm.	
7. Temp. Flare operating at 1,544 SCFM, 1700°F (2 blowers - 3+5). Inlet gas samples: CH ₄ =35%Vol, O ₂ =0.8%Vol, CO=450ppm.	
8. Basin B is clear with ~4 inches of sediment around drains.	
9. Well Gas samples: #6045 - CH ₄ =28%Vol, O ₂ =0.1%Vol, CO=200ppm #590 - CH ₄ =32%Vol, O ₂ =0.2%Vol, CO=500+ppm #526 - CH ₄ =30%Vol, O ₂ =0.6%Vol, CO=500+ppm	
10. Eastside drainage ditch concrete cracks have been repaired.	
11. Flare 8 operating at 3,102 SCFM, 1682°F (one blower). Inlet gas sample: CH ₄ =34%Vol, O ₂ =1.0%Vol, CO=500+ppm.	
12. San Fernando Road had some trash and debris along roadside.	
13. Flare 1 operating at 3,705 SCFM, 1695°F (one blower). Inlet gas sample: CH ₄ =23%Vol, O ₂ =5.1%Vol, CO=350ppm	
14. Flare 3 operating at 3,750 SCFM, 1690°F (one blower). Inlet gas sample: CH ₄ =36%Vol, O ₂ =1.4%Vol, CO=490ppm.	
15. Met with Republic's gas well engineer and discussed gas sample valves. SCH currently has ~510 operating wells, total.	
FURTHER REVIEW NEEDED	
1. Repair cracks and spalling, remove brush from westside drainage ditch.	
2. Remove trash and debris along San Fernando Road.	
3. Investigate high levels of CO at gas wells.	
4. Investigate low levels of CH ₄ /high levels of O ₂ at Flare 1 (possible air intrusion).	
Project Number: 5800	Signed: <u>Mike Lindsay</u>



**SUNSHINE CANYON LANDFILL
MITIGATION MONITORING SITE REPORT**

Monitor: James Aidukas	Page: 1 of 2
Discipline: Project Manager	Date: 2/1/13
Site Conditions: Clear and sunny, ~65° F, slight wind 10-15 MPH	
SITE LOG	

Republic Site Manager - Anthony Bertrand

Met with John Nelson (LADPW), Tarik Hadj-Hamou (SES), Mike Lindsay and Beth Kempton (UltraSystems). Signed in at the office and had a pre-monitoring meeting with Anthony Bertrand. During the meeting with Mr. Bertrand, the following was discussed:

Status of the City Coastal Sage Mitigation

- Construction plans were provided for information purposes.
- The first pilot program will be 5 acres on the City South "C" (lowest top deck).
- Potable water will be used for irrigation.
- The next phases will go from south to north on City South top decks over the next 3 years.
- No work will be done on the County sage areas.
- I stated that the 1990 curative variance had height limits for the City South top decks and that those conditions should be checked.

Chatsworth Wetlands Mitigation

- There are still pending property transfer issues. The City is working on the issues and may have them resolved by August.
- The Corps of Engineers has given an extension until the end of 2012.

Interim Vegetation

- Republic will be hydroseeding 15 more acres in February. They are working with S&S seeds to obtain better results than prior hydroseeding.

Emergency Power Generators

- Sizing for each location has been completed.
- Currently Republic is proposing to have contract rental equipment.
- Republic is now in the process of filing a SCAQMD permit application for emergency generators at Flares 1, 3, 9 & 10; permits should be issued by the end of 2013.

City Sewer Connection

- A City sewer connection application has been submitted and is in the review process to connect to the City sewer south of Balboa on San Fernando Road and sewer 250,000 gallons/day of treated landfill liquids.

County Top Deck

- Stockpile soil is being used for daily cover

Cell CC3A Part II

- Republic is evaluating options to stabilize an old landslide in the development of CC3A Part II. RWQCB prefers to raise the CC3A Part II cell floor to provide stability
- CC3B will be submitted to RWQCB by May 1st

After adjourning the meeting, John Nelson and the UEI team proceeded to monitor the following areas:

- Spot check County top deck elevations
- Observe the County Sage Mitigation Area. Minimal growth has occurred this year with further erosion from the rains.
- The active fill area had debris mixed in with cover soils. This could have been from prior windy days.
- The City South top decks were walked and photos were taken of the existing condition of vegetation

Flare Operating Conditions

Flare 9 - 1607° F, 2329 SCFM, -56.9" WC vacuum, 38% methane

Flare 1 - 1684° F, 3984 SCFM, -58.33" WC vacuum

FURTHER REVIEW NEEDED

COMMENTS

Signed: 



**SUNSHINE CANYON LANDFILL
MITIGATION MONITORING
SITE REPORT**

Monitor: <u>Mike Lindsay</u>	PAGE <u>1</u> OF <u>1</u>
Discipline: <u>Environmental Engineer</u>	Date: <u>02-01-13</u>
Site Conditions: <u>Sunny, Clear, 52-68°F, 5-15 mph</u>	

SITE LOG

1. Met with Anthony Bertrand (Republic), John Nelson (LACDPW), Tarik H. Beth Kempton and Jim Aidukas (UltraSystems).
2. Curative Variance - 1,924 1/2 Feet
3. Anthony will provide us with a set of vegetation construction plans (fully specified). - Coastal Sage Mitigation.
4. Will use city potable water to irrigate new plantings.
5. Will wait on County-side plantings until city proves itself.
6. Chatsworth mitigation for is working through the City now. (16 ac.)
→ need new appraisal (with LM) → Army Corp of Engineers (By Aug.?)
7. Barley grass above scalehouse is not doing very well. Tim working with SRS seed, to evaluate outcome. Anthony: "a grade of D-"
8. Generator status: sizing established, switchgear design, permits for AAMP have been filled out.
9. Gens for Flares 1, 3, 9 & 10. (not 8 or temp)
10. Sewer connection permit is in process / review 250,000 gallons per day capacity for IIFT station.
11. County top deck stock pile is used daily for daily cover for working face.
12. Golder hired to analyze bore data, recommend buttress design based on drilling program (will lose air space / raise floor) - construction by April 1.
13. Measured point and line transects for County top deck elevations.
14. Flare 9 operating at 2,319 SCFM, 1,605°F
- Gas samples: CH₄ = 38% Vol, O₂ = 1.7% Vol, CO = 500+ PPM.

FURTHER REVIEW NEEDED

Project Number: 5800

Signed: Mike Lindsay



**SUNSHINE CANYON LANDFILL
MITIGATION MONITORING
SITE REPORT**

Monitor: Tarik Hadj-Hamou, Ph.D., P.E.	PAGE 1 OF 2
Discipline: Civil - Geotechnical	Date: February 2, 2013
Site Conditions: Sunny	
SITE LOG	
9:00 arrive at Sunshine Canyon Landfill , meet with John Nelson (LADPW)and Mike Lindsay, Beth Kempton and Jim Aidukas (UltraSystem) to prepare visit	
9:30-11:30 Meeting with Anthony Bertrand Development of next phase of landfill, Cell CC3A 2, is the main item discussed that is pertinent to Civil-geotechnical compliance: <ul style="list-style-type: none"> • The area slated for the development in underlain by a large ancient landslide and there is concern about reactivation the landslide when excavating down to initially proposed grading plan. • Republic hired Golder and Associates to recommend and perform an additional geotechnical investigation. • The recommendation includes advancing 6 borings in addition to those already drilled in the area. • It is our current understanding that the remedial acting may be to not excavate down to the original level and place a stabilizing fill, up to 40 ft thick, at the toe of the landslide • It also our understanding the Republic will submit the results of the study and the plan by April 1st. • It is our understanding based on the requirement of the City CUP conditions M-4.1.1-5 and County Geology 1.07 that we will be provided with the reports, for information purposes and to certify that the reports have been prepared in accordance with CUP 	
11:30 12:45: site tour	
Drainage system <ul style="list-style-type: none"> • Sedimentation basins <ul style="list-style-type: none"> ○ Basins are clean • Channels <ul style="list-style-type: none"> ○ The cracks observed in the bottom of the west channel between Basin A and Basin D observed in previous visits are still there 	
Cell CC3A <ul style="list-style-type: none"> • Waste placement was on-going 	
Geotechnical Issues <ul style="list-style-type: none"> • Drove around site observing roads and slopes for geotechnical issues: none noted • Observed the stockpile near the administration office: no concerns • We noted the locations of boreholes advanced by geotechnical consultant for development of cell CC3 2 A 	



Monitor: Tarik Hadj-Hamou, Ph.D., P.E.	PAGE 2 OF 2
Discipline: Civil – Geotechnical	Date: February 1, 2013
Site Conditions: Sunny	
SITE LOG	
<ul style="list-style-type: none"> Some sloughing was noted on the slope above the access road, at the level of cell CC3 (Photo 41) 	
FURTHER REVIEW NEEDED	
None	
COMMENTS	
Signed:	



Photo 41: Sloughing at toe of slope above access road at level of Cell CC3



**SUNSHINE CANYON LANDFILL
MITIGATION MONITORING SITE REPORT**

Monitor: Elizabeth Kempton, UltraSystems	PAGE 1 OF 1
Discipline: Biological Resources/ Vegetation	Date: 02/01/2013
Site Conditions: Warm, sunny, clear, with light breezes.	
SITE LOG	
<p>At approximately 8:30 AM, Mr. Mike Lindsay (UltraSystems) and I visited the City North Side hydroseeded areas and observed the status of the plant growth on the slopes that were hydroseeded with the new seed mix. What appeared to be barley grass was growing below the mid-bench road, approximately four inches in height. It had a greenish-yellow hue, indicating a lack of water and/or nutrients. Hydroseeded areas above the mid-bench road were void of growth. No irrigation was apparent in either area.</p> <p>At 9:00 AM, Mr. Jim Aidukas (UltraSystems), Mr. Mike Lindsay and I met with Mr. John Nelson (LACDPW) at the Sunshine Canyon Landfill offices and signed in.</p> <p>At 9:20 AM, we met with Mr. Anthony Bertrand (Republic) to discuss on-going activities. Mr. Bertrand provided UltraSystems with a copy of the Coastal Sage Mitigation revegetation design specifications.</p> <p>At 11:10 AM, we visited the "County Top Deck" area. Also observed areas of the "County Coastal Sage Mitigation" area that exhibit erosion and poor plant coverage.</p> <p>At 12:00 PM, we (Mr. Jim Aidukas, Mr. John Nelson and I) visited the active fill areas of the landfill. We observed trash and debris in the daily cover soil of the previous day's interim cover.</p> <p>At 12:30 PM, we visited the lower deck of the City Sage Mitigation area to observe existing conditions and photo-document areas prior to the start of restoration activities in February. The area is primarily covered in non-natives.</p> <p>At 12:50 PM, we visited the middle deck of the City Sage Mitigation area to observe and photograph vegetation. Then we continued to the upper deck of the City Mitigation Area at around 1 pm. Both areas still exhibited poor coverage of native plants.</p> <p>At approximately 1:30 PM we visited Flare 9. We observed no growth on adjacent slopes, which were previously hydroseeded.</p> <p>At 2:00, we signed out at the office.</p>	
FURTHER REVIEW NEEDED	
<ul style="list-style-type: none"> • Need an update on the status of replacement fir trees to meet mitigation goals. • Poor native vegetation cover at mitigation sites and at "interim cover" and mitigation areas; non-native recruitment evident. 	
Signed:	<i>Elizabeth Kempton</i>

February Site Visits

February 13, 2013: James Aidukas (UltraSystems), Mike Lindsay (UltraSystems)

February 27, 2013: James Aidukas (UltraSystems), Mike Lindsay (UltraSystems), Susan Foster (UltraSystems)



**SUNSHINE CANYON LANDFILL
MITIGATION MONITORING SITE REPORT**

Monitor: James Aidukas	Page: 1 of 1
Discipline: Project Manager	Date: 2-13-13
Site Conditions: Clear and calm, ~65° F	

SITE LOG

Republic Site Manager - Anthony Bertrand

Met with John Nelson (LADPW), Joe Decruyenaera (Biologist with County of Los Angeles Department of Regional Planning), and Beth Kempton (UltraSystems). We had a pre-monitoring meeting with Patti Costa, Republic's Environmental Manager. We discussed the implementation of the City South Deck "C" Sage Mitigation Plans and schedule. Patti Costa stated that the plans were finalized and the construction was scheduled to start in the next week.

After the meeting, John Nelson, Joe Decruyenaere, Beth Kempton, and I proceeded to monitor the following areas:

- The City South Deck "C" area was observed for the current site conditions. Stockpiled soil did not appear to be adequate to implement the proposed plans. The existing native and non-native plants were noted.
- The County Sage Mitigation Area had minimal sage coverage. Soil type and erosion appeared to be the main concern of the UltraSystems and County biologists. Employing erosion control methods in this area along with reseeding could prove successful.
- Flare 8 was observed to be operating with no concerns. It was observed that the inlet knockout pressure relief valve outlet pipe had no weep hole in the discharge pipe.
- The Big Cone Fir mitigation site was observed and tree growth was noted to be hampered by the chicken wire protective screens. The removal of these screens should be evaluated by Republic's biologist.

Flare Operating Conditions:

- Flare 8 - 1680 °F, 2874 SCFM

FURTHER REVIEW NEEDED

COMMENTS

Signed: 



**SUNSHINE CANYON LANDFILL
MITIGATION MONITORING SITE REPORT**

Monitor: Elizabeth Kempton, UltraSystems	Page: 1 of 1
Discipline: Biological Resources/Vegetation	Date: 2-13-13
Site Conditions: Cool, clear with slight breezes	
SITE LOG	
<p>Met with John Nelson (LADPW) Joe Decruyenaera (Biologist-County of LA Department of Regional Planning), and Jim Aidukas (UltraSystems). We had a pre-monitoring meeting with Patti Costa, Republic's Environmental Manager. We discussed the implementation of the City South Deck "C" Sage Mitigation plans and schedule.</p> <p>John Nelson, Joe Decruyenaera, Jim Aidukas, and I proceeded to perform site monitoring.</p> <ul style="list-style-type: none"> The City Sage Mitigation Area was observed. It has a small amount of stockpiled soil. The stockpile did not seem adequate. The County Sage Mitigation Area was observed. The coverage of new sage was minimal and erosion seems to be having an impact on the success. <p>I had to leave early for another activity.</p>	
FURTHER REVIEW NEEDED	
COMMENTS	
Investigate soil erosion techniques along with reseeding at the County Sage Mitigation Area.	
Signed:	




**SUNSHINE CANYON LANDFILL
MITIGATION MONITORING SITE REPORT**

Monitor: James Aidukas	Page: 1 of 2
Discipline: Project Manager	Date: 2/27/13
Site Conditions: 60-65° F, Breezy	
SITE LOG	
<p>Republic Site Manager - Anthony Bertrand</p> <p>Met with John Nelson (LADPW), Mike Lindsay and Susan Foster (UltraSystems). Susan Foster went to a meeting with Becky Van Sickle to discuss hydrology, hazardous waste and risk of upset monitoring conditions.</p> <p>John Nelson, Mike Lindsay and I had a discussion with Achaya Kelapanda to obtain the current status of the gas recover and flare systems. There were no problems noted with these systems. Achaya did state that the DTE gas-to-energy project was having County of Los Angeles permitting problems concerning sanitary waste handling and disposal and providing a firewater system for the proposed facility. He did not know what the impact would be on the construction schedule.</p> <p>After the meeting, John Nelson, Mike Lindsay and I proceeded to monitor the following areas:</p> <ul style="list-style-type: none"> • Drove to the City South oil field access road to observe the area for the new entrance road realignment associated with the ultimate landfill design. Observed areas of potential impacts. • Basin A was dry and had tree branches in the middle of the basin. Sediment was approximated 6" deep at the outlet risers. • The westside drainage ditch still had a section of the bottom cracked and uplifting. A section of the sidewalls was still spalling and a horizontal crack in the sidewalls was observed. No repairs have been made since these conditions were first noted. • The westside channel had a makeshift ladder made from a pallet. It was observed to be unsafe and it should be removed. • The material storage yard was observed to be neat and well-organized. • The Basin D north drainage had sections of the HDPE uplifted from the wind and it posed a slight blockage to water flow. • Basin B was dry with approximately 3-4" of sediment around the outlet risers. • A significant amount of stockpiled soil was moved from the County top deck. • The County area near the temporary flare, which normally had a gas odor, did not have any odor. • It was observed that the two-way paved access road near the City south landfill narrowed to a one-lane width and there was no traffic control. • The terminal basin had standing water and a significant amount of sediment at the outlet risers, greater than two or more feet. • The crack in the terminal basin exterior side wall has not been repaired. • The operating face was small and litter controlled. • Sierra Highway was observed to have litter on the east side. • The electric lines from the leachate treatment facility to the liquids handling facility had all but one branch removed from hanging directly over the wires. This last branch should be removed for fire safety. 	



**SUNSHINE CANYON LANDFILL
MITIGATION MONITORING SITE REPORT**

Monitor: James Aidukas	Page: 2 of 2
Discipline: Project Manager	Date: 2/27/13
Site Conditions: 60-65° F, Breezy	
SITE LOG	
<p>Flare Operating Conditions:</p> <ul style="list-style-type: none">○ Temporary Flare - 1687° F, 1490 SCFM, -56.5" vacuum○ Flare 1 - 1694° F, 3958 SCFM○ Flare 3 - 1695° F, 3162 SCFM	
FURTHER REVIEW NEEDED	
COMMENTS	
Signed: 	



**SUNSHINE CANYON LANDFILL
MITIGATION MONITORING SITE REPORT**

Monitor: Susan Foster	Page: 1 of 1
Discipline: Hydrology, Haz. Waste, Risk of Upset	Date: February 27, 2013
Site Conditions: Clear and chilly	
SITE LOG	
<p>Met with John Nelson, James Aidukas, and Mike Lindsay at the landfill.</p> <p>Upon arrival, I met with Becky Van Sickle (Environmental Compliance Specialist) and requested that she provide me with documents to review regarding the following City and County Hydrology, Haz. Waste, Risk of Upset conditions topics (from late 2012 and early 2013):</p> <ul style="list-style-type: none"> Spill Response Program Personal Protective Equipment Hazardous Waste Load-Checking Safety Inspections/Checklists Accident/Injury reports, Inspections Personal Protective Equipment Hazardous Waste Disposal Injury and Illness Prevention Program Lockout/Blackout Procedures Prohibited Waste Procedures <p>Becky showed me where the environmental compliance and general safety records were kept, which are located in a room beside her office. She indicated that if records for which I was looking were not found in the room beside her office, then Fred Jones would be able to assist me in finding other records concerning operations (safety inspections, etc.) after we toured the site later. I also inquired as to if the annual site aerial photo had taken yet, and Becky said that it hadn't. She said she will provide the photo when it is taken, which will hopefully be in a few weeks.</p> <p>I reviewed safety and procedural documents for the above topics for late 2012.</p> <p>After I had reviewed the documents, Becky Van Sickle drove me around the landfill to observe the hazardous waste storage area, access gates, hazardous waste load checking, and general safety conditions involving the following topics:</p> <ul style="list-style-type: none"> Site Access/Fencing Refuse Inspection Program Hazardous Waste-Procedures <p>During the drive, a water truck was observed not to be equipped with a hose. The hazardous waste storage area was clean. Load checking procedures were in place. The front access gate was locked.</p> <p>After touring the site with Becky, I returned to the office to meet with Fred Jones to discuss recent documentation for safety training, inspections, etc. He showed me binders that recorded training and inspections for 2013, as well as upcoming scheduled safety meetings for employees. Review of these documents indicated that training is occurring regularly and appropriate records are being kept with employee signatures indicating their presence at training. Recent monthly training topics include asbestos safety, hand and portable power tools, radiation safety, and rear collisions. Additionally, individual</p>	

employee observation forms are kept in order to confirm that individual employees are operating machinery safely.

Afterwards, John Nelson, James Aidukas, and I drove around the landfill to observe operations, etc. We observed that the oil field gate was unlocked.

FURTHER REVIEW NEEDED


All water trucks need to be equipped with fire hoses. A water truck was observed not to be equipped with a hose.

The oil field gate was observed to be unlocked.

COMMENTS

Project Number: 5800

Signed:





**SUNSHINE CANYON LANDFILL
MITIGATION MONITORING
SITE REPORT**

Monitor: <i>Mike Lindsay</i>	PAGE <i>1</i> OF <i>1</i>
Discipline: <i>Environmental Engineer</i>	Date: <i>02-27-13</i>
Site Conditions: <i>Sunny, Clear, 56-74°F, 5-20 mph</i>	
SITE LOG	
<ol style="list-style-type: none"> <i>1. Met with Achaya Kelpandona (Republic), John Nelson (LACDPW), Jim Andukas and Susan Foster (UltraSystems).</i> <i>2. Observed proposed new entrance / access road route 100-acre buffer / toe berm.</i> <i>3. Measured point and line transects for County top deck elevations.</i> <i>4. Observed trash and debris along side of northbound Sierra Highway.</i> <i>5. Observed clean roadway along side of south bound Sierra Highway (was littered during previous visit).</i> <i>6. Observed oil field chainlink gate unlocked.</i> <i>7. Flare 1 operating at 3,990 SCFM, 1,695°F.</i> <i>8. Flare 3 operating at 3,175 SCFM, 1,783°F.</i> 	
FURTHER REVIEW NEEDED	
<ol style="list-style-type: none"> <i>1. Remove trash and debris from along side of southbound Sierra Highway.</i> <i>2. Lock oil field chainlink gate.</i> 	
Project Number: 5800	Signed: <i>Mike Lindsay</i>

March Site Visits

March 13, 2013: James Aidukas (UltraSystems), Mike Lindsay (UltraSystems)

March 20, 2013: James Aidukas (UltraSystems), Tarik Hadj-Hamou (SES)



**SUNSHINE CANYON LANDFILL
MITIGATION MONITORING SITE REPORT**

Monitor: James Aidukas	Page: 1 of 2
Discipline: Project Manager	Date: March 13, 2013
Site Conditions: Clear and sunny, intermittent wind 5-10 MPH	
SITE LOG	
<p>Republic Site Manager - Anthony Bertrand</p> <p>Met with John Nelson (LADPW) and Mike Lindsay (UltraSystems) and signed in at office. Had brief meetings with Patti Costa and Achaya Kelapanda to obtain an update on the City South Deck C sage mitigation and current gas recover and gas-to-energy issues. After the meetings, John Nelson, Mike Lindsay and I proceeded to monitor the following areas:</p> <ul style="list-style-type: none"> • Basin A was dry with approximately 3-4" of sediment near the outlet risers. Landslide material was observed in the middle of the basin, The native drainage area in back of the basin was observed to be in good condition. The inlet pipes from the westside drainage was partially blocked with sediment and tumbleweeds. • The County top deck area continues to have stockpile soils moved and the lowered, gas well lowered and access roads realigned. • An excavation to locate a gas collection line was observed showing approximately 20 feet of stockpiled soil to the gas collection line elevation. The deck elevation in that area was approximately 1870 feet. An old steel gas well C6W122D was observed in the same general area. • The material storage area was observed to be orderly with no areas of concern noted. • The County sage area has no activity or change since the last monitoring visit. • The Basin D North drainage had areas of the drainage ditch's flow being blocked by the liner material being windblown and clumped. • The soil in Basin D appears to have been sealed with soil sealant to control the potential of blowing dust. • The permanent natural hillsides behind Flare 9 and the gas-to-energy site had been hydroseeded last year but has no established vegetation. These permanent slopes should be revegetated. • Basin B was dry with 2-3 inches of sediment near the outlet standpipes. Windblown material was observed in the back corners near the native hillsides. • Well drilling was observed on the City north deck. • The gas odors around the temporary flare that were noticed last year have not returned. This could be due to a combination of removing stockpile material and more gas wells. • The North City slope revegetation was observed to be yellow and it appears to be dying due to a lack of water. • The terminal basin had standing water and approximately 5-6 feet of sediment at the outlet standpipes. Paper and plastic debris was also observed. • The outlet culvert under San Fernando Road had debris and sediment. Debris was observed between the terminal basin's front exterior wall and the block wall along San Fernando Road. • The liquids handling facility has standing water inside the spill berm concrete wall. • Powerlines to the leachate treatment facility had tree branches in contact with the lines. • Additional soil was moved to the City top deck C for use in the sage mitigation. The construction is scheduled to start within days. • Blown debris was noted on the eastside of Sierra Highway near the I-14 overpass. The westside was clean. 	

Page 2 of 2

Flare Operating Conditions:

- Temporary Flare - 1695° F, 1342 SCFM, 57.9" vacuum
- Flare 9 - 1652° F, 3863 SCFM, -53" vacuum

FURTHER REVIEW NEEDED

1. The inlet pipes to Basin A from the westside drainage has blockage from sediment and tumbleweed.
2. The permanent graded hillsides behind Flare 9 and the gas-to-energy site were hydroseeded but had no success. These slopes need attention and a plan for revegetation.
3. The City north slope revegetated areas are yellow and dry. Adding overhead irrigation should be considered.
4. The debris in and around the terminal basin should be removed.
5. The east side of Sierra Highway at the I-14 overpass has windblown debris from vehicles.
6. The liquid handling facility has standing water within the berm.

COMMENTS

Signed: 



**SUNSHINE CANYON LANDFILL
MITIGATION MONITORING
SITE REPORT**

Monitor: Mike Lindsay	Page 1 of 1
Discipline: Environmental Engineer	Date: 03-13-13
Site Conditions: Clear, Sunny, 66-88°F, 5-15 mph	
SITE LOG	
1. Met with Acharya Kelapanda and Patti Costa (Republic), John Nelson (RA COPW) and Jim Aidukas (Ultra Systems).	
2. Observed sediment basin A to be clear with approx. 3" of sediment 50' around standing drains.	
3. Observed 20'-deep excavation of gas feeder line (Co. Topdeck-1868)	
4. Observed Well 122B (steel, pile-driven well).	
5. Northside perimeter drainage ditch liner in place and clear	
6. No safety covers on two standing drains (by northside drainage ditch and storage yard).	
7. Flare 9 operating at 3871 SCFM, 1718°F; Blower 1 only. Gas Sample: CH ₄ = 38% Vol., O ₂ = 2.1% Vol., CO = 500 ppm; @ 125°F.	
8. Temp Flare operating at 1353 SCFM, 1677°F; Blowers 1 and 3. Gas Samples: CH ₄ = 34% Vol., O ₂ = 2.7% Vol., CO = 500 ppm; @ 120°F.	
9. Sediment basin B clear with small standing water pond.	
10. Two working faces operational (tipper and non-tipper).	
11. Observed vegetation test plots above scale house. Appears to be rye grass about 12" high; green/yellow; dry soil.	
12. Terminal sediment basin is clear, with approx 8" of sediment around standing drains.	
13. Cracks in concrete face getting worse (east wall by entrance).	
14. Observed some trash and debris along east side of Sierra Highway.	
15. Observed leachate plant by entrance to be in order, but with one inch of standing water on foundation.	
16. Overhead power lines have tree branches laying on them again (by leachate plant at entrance).	
FURTHER REVIEW NEEDED	
1. Install 2 top safety covers on standing drains by storage yard.	
2. Add water irrigation system to vegetation test plots.	
3. Repair concrete cracks on face wall at terminal sed. basin.	
4. Remove trash and debris along east side at Sierra Hwy.	
5. Trim tree branches off of power lines by leachate entrance.	
Project Number: 5800	Signed: <i>Mike Lindsay</i>



**SUNSHINE CANYON LANDFILL
MITIGATION MONITORING SITE REPORT**

Monitor: James Aidukas	Page: 1 of 2
Discipline: Project Manager	Date: March 20, 2013
Site Conditions: Clear and sunny, 65-70° F	
SITE LOG	
<p>Republic Site Manager - Anthony Bertrand</p> <p>Met with John Nelson (LADPW), Ly Lam (Los Angeles Department of Planning), Maria Masis (Los Angeles County Regional Planning), and Tarik Hadj-Hamou (SLR) and signed in at office.</p> <p>We traveled to the entrance area and observed: the ultimate landfill toe berm area; the temporary road realignment area; the currently proposed ultimate entrance road realignment, and; the anticipated impacts to vegetation and wildlife. We discussed the potential impacts and studies that will be needed to comply with conditions and mitigation measures.</p> <p>The team then went to Republic's office for a meeting with Anthony Bertrand and Patti Costa. Anthony Bertrand started with a general discussion on requesting the reduction of the frequency of site monitoring visits. I stated that we were only at the site twice a month and that even at this frequency the site changes substantially between visits. Ly Lam stated that they would take it under consideration.</p> <p>Ly Lam suggested that any areas of concern observed during site monitoring be emailed to her, Maria Masis, Dave Thompson and Anthony Bertrand so that the site could address any issues promptly.</p> <p>I then asked Anthony Bertrand about the proposed developments for 2013 and 2014, and he stated the following:</p> <ul style="list-style-type: none"> • The next cell design for CC3A Part II was going to be submitted in days to the RWQCB. The support documentation and the design by Golder and Associates would be sent to Tarik Hadj-Hamou and Ly Lam. Compliance with conditions and mitigation measures was also briefly discussed. • The timing of the ultimate landfill toe berm and temporary access road along the south side of the berm, the current design, and the potential impacts to vegetation and wildlife was discussed. He said that final design drawings were not completed and that the impacts to oak trees should have been already mitigated. • The status of the proposed City sewer pipeline and that they were working on a pump system design and that the design review by the City was in progress. • DTE is moving ahead with their gas-to-energy facility and that the fire and sewer issues were resolved. <p>We ended the meeting and proceeded to monitor the site. The following areas were observed:</p> <ul style="list-style-type: none"> • The County top deck stockpile area - soil continues to be moved and gas wells lowered • Sedimentation Basin A and B were dry • The westside channel still has cracks and spalling in the concrete bottom and walls in one area • The active fill area was small and had no blowing litter. 	

Page 2

Flare operating conditions:

- Flare 9 - 1692° F, 3306 SCFM, -58.46" vacuum

The site monitoring was brief because of the extended meeting.

FURTHER REVIEW NEEDED

Secure oilfield entrance gate with a lock. Post No Trespassing signs.

COMMENTS

Signed:





**SUNSHINE CANYON LANDFILL
MITIGATION MONITORING
SITE REPORT**

Monitor: Tarik Hadj-Hamou, Ph.D., P.E.	PAGE 1 OF 2
Discipline: Civil - Geotechnical	Date: March 20, 2013
Site Conditions: Sunny	
SITE LOG	
<p>9:00 - Arrive at Sunshine Canyon Landfill, meet with John Nelson (LADPW) and James Aidukas (UltraSystems) and prepare for site monitoring visit.</p> <p>9:30 - Meet with Ly Lam (LA Depart. of Planning), Maria Masis (County Regional Planning), Dave Thompson (LA City LEA). We observed the area where the future toe berm for the ultimate landfill will be constructed and the area where the temporary and permanent realignment of the road will occur.</p>	
<p>Meeting with Anthony Bertrand, Republic's General Manager and Patti Costa, Republic's Environmental Manager</p> <ul style="list-style-type: none"> • General discussion about the philosophy of the site visits by the team <ul style="list-style-type: none"> ○ Anthony Bertrand suggested reducing the frequency. It was pointed out that the visit for civil and geotechnical measures is monthly and it would be difficult to do less at a very active landfill like the Sunshine Canyon Landfill (SCL). ○ It was suggested that some of the issues noted during the visit should be mentioned to SCL staff at the completion of the visit so that action could be taken quickly rather than when the report is submitted • Development of next phase of landfill, Cell CC3A Phase II, is the main item discussed that is pertinent to Civil-geotechnical compliance: <ul style="list-style-type: none"> ○ The area slated for the development is underlain by a large ancient landslide and there is concern about reactivation the landslide when excavating down to initially proposed grading plan. ○ Republic hired Golder and Associates to perform a geotechnical investigation and develop recommendations to address the issue. ○ Golder advanced a series of boring, collected available data, and prepared a final report suggesting to not excavate at the toe of the landslide and to place a stability berm. • UltraSystems, based on the requirement of the City CUP conditions M-4.1.1-5 and County Geology 1.07 will be provided with the report for review. Upon the review an opinion- letter will be issued to comment on the proposed remedy of the potential landslide in Cell CC3A Phase II and its conformance with the CUP. 	
Resume site monitoring after meeting	
<p>Drainage system</p> <ul style="list-style-type: none"> • Sedimentation basins <ul style="list-style-type: none"> ○ Basins are clean • Channels <ul style="list-style-type: none"> ○ The cracks observed in the bottom of the west channel between Basin A and Basin D observed in previous visits are still there ○ Vegetation is growing and may exacerbate the problem 	



Monitor: Tarik Hadj-Hamou, Ph.D., P.E.	PAGE 2 OF 2
Discipline: Civil – Geotechnical	Date: March 20, 2013
Site Conditions: Sunny	
SITE LOG	
Cell CC3A	
<ul style="list-style-type: none"> Waste placement was on-going 	
Geotechnical Issues	
<ul style="list-style-type: none"> Drove around site observing roads and slopes for geotechnical issues: none noted Observed the stockpile near the administration office: no concerns 	
FURTHER REVIEW NEEDED	
Golder geotechnical report	
COMMENTS	
Signed:	

Appendix IV

Meeting Logs

**Sunshine Canyon Landfill
Meeting Log for the First Quarter Site Monitoring**

January 16, 2013

Site exit meeting with Achaya Kelapanda, Republic's Environmental Manager

Attendees:

Achaya Kelapanda, Republic Services

John Nelson, LADPW

James Aidukas, UltraSystems

Mike Lindsay, UltraSystems

Discussion: John Nelson and the UEI team met with Achaya Kelapanda and discussed gas recovery operations and CO detected at flares; see James Aidukas Site Monitoring Report dated 1/16/13.

February 1, 2013

Pre-monitoring meeting with Anthony Bertrand, Site Manager

Attendees:

John Nelson, LADPW

James Aidukas, UltraSystems

Mike Lindsay, UltraSystems

Beth Kempton, UltraSystems

Tarik Hadj-Hamou, SES

Discussion: Planned Site Activities, see James Aidukas Site Monitoring Report dated 2/1/13.

February 13, 2013

Pre-monitoring meeting with Anthony Bertrand, Site Manager

Attendees:

Patti Costa, Republic Services

Joe Decruyenaera, LA Department of Regional Planning

John Nelson, LADPW

James Aidukas, UltraSystems

Beth Kempton, UltraSystems

Discussion: Pre-monitoring meeting with Patti Costa, Republic's Environmental Manager. Discussed the implementation of the City South Deck "C."

Sage Mitigation Plans and schedule. Patti Costa stated that the plans were finalized and the construction was scheduled to start in the next week; see James Aidukas Site Monitoring Report dated 2/13/13.

February 27, 2013

Pre-monitoring meeting with Anthony Bertrand, Site Manager

Attendees:

Achaya Kelapanda

John Nelson, LADPW

James Aidukas, UltraSystems

Mike Lindsay, UltraSystems

Discussion: John Nelson, Mike Lindsay and James Aidukas had a discussion with Achaya Kelapanda to obtain the current status of the gas recover and flare systems. There were no problems noted

with these systems. Achaya did state that the DTE gas-to-energy project was having County of Los Angeles permitting problems concerning sanitary waste handling and disposal and providing a firewater system for the proposed facility. He did not know what the impact would be on the construction schedule; see James Aidukas Site Monitoring Report dated 2/27/13.

Site meeting with Becky Van Sickle, Republic's Environmental Compliance Specialist

Attendees:

Susan Foster, UltraSystems

Becky Van Sickle, Republic

Discussion: Planned Site Activities related to the City and County Hydrology, Hazardous Waste, Risk of Upset conditions and site tour. Please see Susan Foster Site Monitoring Report dated 2/27/13.

Site meeting with Fred Jones, Operations

Attendees:

Susan Foster, UltraSystems

Fred Jones, Republic

Discussion: SCL worker safety and training verification. Please see Susan Foster Site Monitoring Report dated 2/27/13.

March 13, 2013

Pre-monitoring meeting with Patti Costa, Republic's Environmental Manager, followed by a meeting with Achaya Kelapanda, Republic's Gas Systems Environmental Manager

Attendees:

John Nelson, LADPW

James Aidukas, UltraSystems

Mike Lindsay, UltraSystems

Discussion with Patti Costa:

Ms. Costa gave us an update on the City South Deck C sage mitigation project. She stated that additional soil was moved to the area and that construction was scheduled to start within days. The plan is to complete the Deck C construction and planting this spring.

Discussion with Achaya Kelapanda:

Mr. Kelapanda stated that additional gas wells were being drilled on the City North Deck and that all gas recovery and flaring systems were operational.

March 20, 2013

Meeting with Anthony Bertrand, Republic's General Manager, and Patti Costa, Republic's Environmental Manager

Attendees:

Ly Lam, Los Angeles Department of City Planning

Maria Masis, County of Los Angeles Regional Planning

Dave Thompson, Los Angeles City LEA

John Nelson, LADPW

James Aidukas, UltraSystems

Tarik Hadj-Hamou, SLR

Discussion:

Anthony Bertrand started with a general discussion on requesting the reduction of the frequency of site monitoring visits. I stated that we were only at the site twice a month and that even at this

frequency the site changes substantially between visits. Ly Lam stated that they would take it under consideration.

Ly Lam suggested that any areas of concern observed during site monitoring be emailed to her, Maria Masis, Dave Thompson and Anthony Bertrand so that the site could address any issues promptly.

I then asked Anthony Bertrand about the proposed developments for 2013 and 2014, and he stated the following:

- The next cell design for CC3A Part II was going to be submitted in days to the RWQCB. The support documentation and the design by Golder and Associates would be sent to Tarik Hadj-Hamou and Ly Lam. Compliance with conditions and mitigation measures was also briefly discussed.
- The timing of the ultimate landfill toe berm and temporary access road along the south side of the berm, the current design and the potential impacts to vegetation and wildlife were discussed. He said that final design drawings were not completed and that the impacts to oak trees should have been already mitigated.
- The status of the proposed City sewer pipeline and that they were working on a pump system design and that the design review by the City was in progress.
- DTE is moving.

Appendix V

County Top Deck Elevations

INTRODUCTION

On February 8, 2012 and February 27, 2013, UltraSystems conducted a Global Positioning System (GPS) survey at the Sunshine Canyon Landfill, located in Sylmar, California. Elevation data was collected for the top deck area on the Los Angeles County side of the landfill.

EQUIPMENT USED

A Trimble GeoXH 2008 Series handheld GPS device running TerraSync software was used for the measurements. The device has a horizontal and vertical accuracy of 0.1 meters. The GPS built-in antenna was used with a four-foot vertical offset to compensate for carrying the device. Also, the unit was placed ten feet away from any materials that could have an effect on satellite signal reception (e.g. metal within well heads).

MEASUREMENT LOCATIONS

A transect line was walked for elevation data along natural contours, ridge lines, break points and high/ low areas within the County Top Deck. For reference purposes, several gas well locations were measured twice, each on a different survey date. This helped to verify reading consistency.

MEASUREMENT RESULTS

These elevation measurements show a general reduction in stockpiled soil on the County Top Deck (see GPS Elevation Data Table, Appendix V).

GPS Data Logs

February 8, 2012

County Top Deck Elevation Readings

Performed by:

Mike Lindsay, UltraSystems (see GPS Elevation Data Table)

February 27, 2013

County Top Deck Elevation Readings

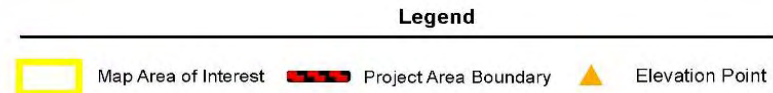
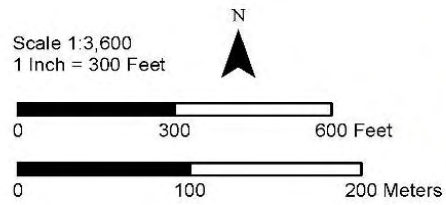
Performed by:

Mike Lindsay, UltraSystems (see GPS Elevation Data Table)

GPS Elevation Map



First Quarter 2013

**Sunshine Canyon Landfill**

County Top Deck
Change of Elevations From
February 8, 2012 to February 27, 2013



GPS Elevation Data Table

SCL – Elevation Comparison of Feb 8, 2012 and Feb 27, 2013 Surveys

GPS Survey Date – 2012	Elevation 2012	GPS Survey Date – 2013	Elevation 2013	Elevation Difference from 2012 to 2013
2/8/2012	1879.8	2/27/2013	1865.2	-14.6
2/8/2012	1880.8	2/27/2013	1873.9	-6.9
2/8/2012	1883.2	2/27/2013	1875.9	-7.2
2/8/2012	1901.0	2/27/2013	1896.7	-4.3
2/8/2012	1890.4	2/27/2013	1879.5	-10.9
2/8/2012	1893.3	2/27/2013	1877.9	-15.4
2/8/2012	1896.8	2/27/2013	1883.7	-13.0
2/8/2012	1899.3	2/27/2013	1893.7	-5.6
2/8/2012	1902.9	2/27/2013	1891.8	-11.1
2/8/2012	1894.1	2/27/2013	1892.8	-1.3
2/8/2012	1897.1	2/27/2013	1893.3	-3.8
2/8/2012	1890.0	2/27/2013	1890.9	0.8