

Ambient Air Quality Monitoring at Sunshine Canyon Landfill and Van Gogh Elementary School

Continuous monitoring of particulate matter, black carbon, wind speed, and wind direction began at the Sunshine Canyon Landfill (Landfill Site) and at Van Gogh Elementary School (Community Site) in Granada Hills in fall 2007.

These data are used to characterize ambient air pollution concentrations on a neighborhood scale in the context of the Los Angeles basin and to evaluate the impact of landfill operations on air quality in the community.

Particulate Matter (PM₁₀)

PM₁₀ is particulate matter less than 10 microns in diameter. A human hair is about 100 micrometers in diameter. Its width could hold roughly 10 PM₁₀ particles. PM₁₀ is present in dust, smoke, soot, and dirt. It can be inhaled and drawn into the lungs, causing health problems for some people.

Black Carbon (BC)

Black carbon is a sooty black material emitted from gas and diesel engines, coal-fired power plants, and other sources that burn fossil fuel. Many BC particles are too small to be visible. BC emissions can cause adverse health and climate effects.

Wind

Wind Speed (WS) and Wind Direction (WD) are measured because they can significantly affect when and how far airborne pollutants travel from their sources.



Wind-Blown
Dust



Landfill
Operations



Dirt Roads



Vehicular
Traffic



Diesel
Engines



Industrial
Activities



Statistical Summary for the Fall 2024 Quarter

PM₁₀ Exceedances

Total PM₁₀ Fall Quarter Exceedances over 17 Years

0

Landfill Site
Federal
Exceedances

0

Community
Site Federal
Exceedances

522

Landfill Site
State
Exceedances

102

Community
Site State
Exceedances

Total Exceedances in the 68th Quarter

0

Landfill Site
Federal
Exceedances

0

Community
Site Federal
Exceedances

9

Landfill Site
State
Exceedances

2

Community
Site State
Exceedances

PM₁₀

Landfill Site

There is a statistically significant increasing trend in all percentiles but not the maximum. However, nearly all percentile levels have been decreasing since the 2021 fall quarter.

Community Site

There is not a statistically significant trend for most percentiles.

Average and Maximum Black Carbon and PM₁₀ Concentrations

PM₁₀

BC

LS

LS

— max
— 95%
— 90%
— 75%
— 50%
— 25%
— 10%
— 5%

PM₁₀

BC

CS

CS

Black Carbon

Landfill Site

There is a statistically significant decreasing trend in all percentiles and the maximum concentration at the Landfill site during the fall quarters over the observational record.

Community Site

While there is a statistically significant declining trend in fall quarter 24-hr BC concentrations at all percentiles and the maximum, concentrations rose from the previous fall quarter.

Data Completeness

Data Capture

Valid Data Used for Analysis

	PM ₁₀	BC	WD and WD	PM ₁₀	BC	WS and WD
Landfill Site	99.82%	98.76%	100%	97.02%	99.95%	100%
Community Site	99.77%	98.72%	100%	99.77%	99.91%	100%

Sixty-Eighth Quarterly Report of Ambient Air Quality Monitoring at Sunshine Canyon Landfill and Van Gogh Elementary School

September 1 – November 30, 2024

Prepared by

Charles Scarborough
Bryan Penfold

Sonoma Technology
1450 N. McDowell Blvd., Suite 200
Petaluma, CA 94954
Ph 707.665.9900 | F 707.665.9800
sonomatech.com

Prepared for

Planning Department, City of Los Angeles
City Hall, Room 525
200 N. Spring St.
Los Angeles, CA 90012
and
Los Angeles County Dept. of
Regional Planning
320 West Temple St., 13th Floor
Los Angeles, CA 90012

Quarterly Report

STI-922030-8316

January 31, 2025

This document contains blank pages to accommodate double-sided printing.

Contents

Figures	iv
Tables.....	iv
Executive Summary.....	1
Background.....	1
Statistics	1
1. Introduction.....	3
2. Data Completeness.....	5
3. PM₁₀ Exceedances.....	7
4. Average and Maximum BC and PM₁₀ Concentrations	11
5. Field Operations	19
6. References.....	21

Figures

1. An aerial view of the Sunshine Canyon Landfill, including the Landfill and Community monitoring sites	4
2. Distribution of 24-hr average PM ₁₀ concentrations at the Sunshine Canyon Landfill North, Landfill, and Community sites during fall quarters from 2008–2024.	14
3. Trends of 24-hr average PM ₁₀ maximum and percentiles at the Sunshine Canyon Landfill site and Community site during fall quarters from 2008–2024	15
4. Distribution of 24-hr average BC concentrations at the Sunshine Canyon Landfill North, Landfill, and Community sites during fall quarters from 2008–2024.	16
5. Trends of 24-hr average BC maximum and percentiles at the Sunshine Canyon Landfill site and Community site during fall quarters from 2008–2024	17

Tables

1. Data completeness statistics for hourly PM ₁₀ , hourly BC, and 1-min WS and WD data for the 2024 fall quarter monitoring period.	5
2. Number of federal and state 24-hr PM ₁₀ standard exceedances during fall quarters for the baseline year and 2008–2024 at the Landfill site	8
3. Number of federal and state 24-hr PM ₁₀ standard exceedances during fall quarters for the baseline year and 2008–2024 at the Community site	9
4. The 24-hr BC concentrations for fall quarters from the baseline year and each year from 2008–2024 at the Landfill site	12
5. The 24-hr BC concentrations for fall quarters from the baseline year and each year from 2008–2024 at the Community site	13
6. Landfill monitoring site visits, field maintenance, and operations	19
7. Community site visits, field maintenance, and operations	19
8. Flow rates for the BAM PM ₁₀ and Aethalometer BC monitors at the Landfill and Community sites	20

Executive Summary

Background

Continuous monitoring of meteorological and air quality parameters began at the Sunshine Canyon Landfill (Landfill site) and the Van Gogh Elementary School (Community site) in the nearby community of Granada Hills in fall 2007. The following parameters are measured at these sites: particulate matter less than 10 microns in aerodynamic diameter (PM₁₀), wind speed (WS), wind direction (WD), and black carbon (BC) as a surrogate for diesel particulate matter (DPM). The collected data are validated and evaluated quarterly for completeness. Monitoring is conducted to fulfill stipulations in the City of Los Angeles' Conditions of Approval for the expansion of the landfill.¹ Similar conditions cover the County of Los Angeles' portion of the landfill.²

PM₁₀ concentrations are compared with federal and state PM₁₀ standards. When PM₁₀ concentrations are above the standard (i.e., an exceedance), additional comparisons are made with the historical, regional, and annual ambient PM₁₀ concentrations. PM₁₀ and BC data are analyzed in an in-depth annual report that characterizes the impacts of landfill operations on ambient air quality as observed at the Community site. This analysis involves quantifying PM₁₀ and BC concentrations and exceedances and comparing concentrations between the Landfill and Community sites.

The validated hourly data and a summary of the analytical results and field operations are reported to the Planning Department of the City of Los Angeles and to the Los Angeles County Department of Regional Planning. This Sixty-Eighth Quarterly Report summarizes the September 1 – November 30, 2024 (2024 fall quarter) monitoring results from the seventeenth year of continuous data collection.

Statistics

For this quarter, the percentage of hourly PM₁₀ data captured was 99.82% at the Landfill site and 99.77% at the Community site. Of the captured PM₁₀ data, 2.98% at the Landfill site and 0.23% at the Community site were deemed to be invalid, and 36.84% at the Landfill site and 18.04% at the Community site were deemed to be suspect.

The hourly BC data capture rate was 98.76% at the Landfill site and 98.72% at the Community site. Of the hourly BC data captured, 0.05% at the Landfill site and 0.09% at the Community site were deemed to be invalid, and 0.09% at the Landfill site and 0.46% at the Community site were deemed to be suspect.

¹ Section C.10.a of Ordinance No. 172,933

² County Condition 81

The one-min WS and WD data capture rate was 100% at the Landfill site and the Community site. Of the captured 1-min WS and WD data, none were deemed to be invalid at either the Landfill or Community sites. 18.32% of data were deemed to be suspect at the Landfill site, and no data were deemed to be suspect at the Community site.

During this quarter, the state 24-hr PM₁₀ standard (i.e., 50 µg/m³) was exceeded on 11% of days (9 out of the 87 valid days of the quarter) at the Landfill site, and on 3% of days at the Community site (2 out of 91 valid days of the quarter). The federal 24-hr PM₁₀ standard (i.e., 150 µg/m³) was not exceeded at either the Landfill site or the Community site during the quarter. The 24-hr average BC concentration was 0.33 µg/m³ at the Landfill site, which was the second-lowest 24-hr average BC concentration of all monitored fall quarters (2008–2024) at the Landfill site. The 24-hr average BC concentration was 0.41 µg/m³ at the Community site, which was also the second-lowest 24-hr average BC concentration of all fall quarters.

1. Introduction

This report summarizes data completeness, ambient PM₁₀ concentrations, average and maximum ambient BC as a surrogate for DPM concentrations, instrument flow rate verification (quality control) data, and field operations for the quarterly period September 1–November 30, 2024. The collected data are validated and evaluated quarterly for completeness. Continuous monitors have collected data in the fall for 17 years at the Sunshine Canyon Landfill site (previously called the Berm site) and the Van Gogh Elementary School Community site. Monitoring site locations are shown in [Figure 1](#). PM₁₀ is measured using a Beta attenuation monitor (BAM), and BC is measured using an Aethalometer (the Magee Scientific Aethalometer AE33 is the dominant instrument for monitoring BC). The Sunshine Canyon Landfill North monitoring site shown in Figure 1 was installed in December 2015 and decommissioned May 31, 2017. The Landfill site was relocated approximately 720 feet to the northwest during the last days of the 2023 summer quarter (August 29–31, 2023) to eliminate the negative impacts of nearby odor misters on data.

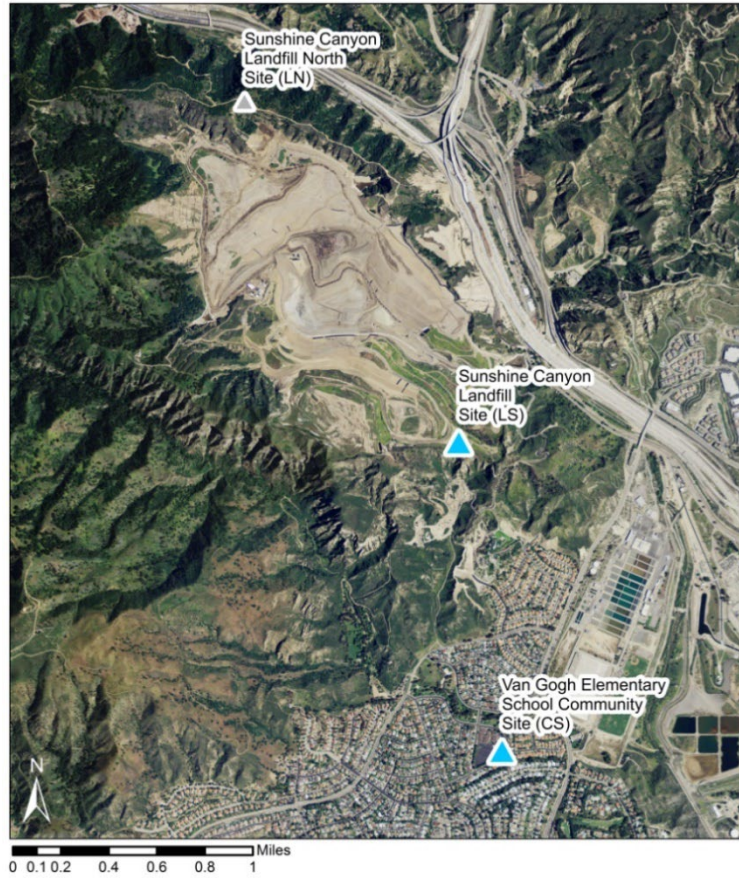


Figure 1. An aerial view of the Sunshine Canyon Landfill, including the Landfill and Community monitoring sites (blue triangles). The Sunshine Canyon Landfill North site (gray triangle) collected data from Dec. 1, 2015 – May 31, 2017, and has been decommissioned.

Monitoring is conducted to fulfill stipulations in the City of Los Angeles' Conditions of Approval for the expansion of the landfill.³ Similar conditions cover the County of Los Angeles' portion of the landfill.⁴

³ Section C.10.a of Ordinance No. 172,933

⁴ County Condition 81

2. Data Completeness

Completeness statistics for all measured variables during the 2024 fall quarter are listed in [Table 1](#). Data deemed to be suspect are included in subsequent analyses (e.g., regional comparisons if applicable), and invalid data are not included. The percentage of data capture for PM₁₀ was 99.82% at the Landfill site and 99.77% at the Community site. Of the captured PM₁₀ data, 2.98% at the Landfill site and 0.23% at the Community site were deemed to be invalid. The percentage of hourly PM₁₀ values deemed to be suspect was 36.84% at the Landfill site and 18.04% at the Community site. PM₁₀ analyzers at both the Landfill site and the Community site experienced flow issues during the 2024 fall quarter. However, both analyzers passed operational maintenance tests, and data originally deemed suspect are considered high enough quality to be included in subsequent analysis.

Table 1. Data completeness statistics for hourly PM₁₀, hourly BC, and 1-min WS and WD data for the 2024 fall quarter monitoring period.

Monitoring Location	Dates	Data Capture (%) ^a			Data Valid or Suspect (%) ^b			Data Suspect (%) ^c		
		PM ₁₀	BC	WS/WD	PM ₁₀	BC	WS/WD	PM ₁₀	BC	WS/WD
Landfill Site	09/01/24-11/30/24	99.82	98.76	100	97.02	99.95	100	36.84	0.09	18.32
Community Site	09/01/24-11/30/24	99.77	98.72	100	99.77	99.91	100	18.04	0.46	0

^a Data Capture is the number of collected data values divided by the total number of expected data intervals during the date range indicated in the "Dates" column (e.g., for the raw BC 1-hr data, 24 data values per day are expected), multiplied by 100.

^b Data Valid or Suspect is the number of data values that are either valid or suspect divided by the number of captured data values, multiplied by 100.

^c Data Suspect is the number of data values labeled as suspect divided by the number of captured data values, multiplied by 100.

The hourly BC data capture rate was 98.76% at the Landfill site and 98.72% at the Community site. In terms of BC data, 0.05% at the Landfill site and 0.09% at the Community site were deemed to be invalid, and 0.09% at the Landfill site and 0.46% at the Community site were deemed to be suspect.

At the Landfill site, the WS/WD capture percentage was 100%, and no data were deemed to be invalid. 18.32% of data were deemed to be suspect. On November 6, sustained winds up to 55 mph at the Landfill site compromised the meteorological tower's foundation, causing the tower to shift and lean. Temporary repairs were made the following day (November 7) to stabilize the tower. The tower and foundation were fully replaced on November 22 at 4:00 p.m. Therefore, wind data collected from November 6 through November 22 at 4:00 p.m. were flagged as suspect. At the Community site, the WS/WD capture percentage was 100%, and no data were deemed to be invalid or suspect.

3. PM₁₀ Exceedances

Federal and state PM₁₀ exceedances for the baseline fall quarter (2002), the previous 16 fall quarters (2008–2023), and the current fall quarter (2024) are summarized in [Table 2](#) for the Landfill site and [Table 3](#) for the Community site. In this quarter, the state PM₁₀ standard of 50 µg/m³ was exceeded on 11% of days (9 out of 87 valid days) at the Landfill site, and 3% of days (2 out of 91 valid days) at the Community site. The Landfill site experienced the lowest number of state exceedances since the 2014 fall quarter, and the Community site experienced a similar pattern as the previous four fall quarters (i.e., a state exceedance percentage under 5%).

The federal 24-hr PM₁₀ standard (i.e., 150 µg/m³) was not exceeded at the Landfill or Community sites during the quarter.

Table 2. Number of federal and state 24-hr PM₁₀ standard exceedances during fall quarters for the baseline year (2002) and 2008–2024 at the Landfill site. Values in the “Federal 24-hr” column represent the number of exceedances and the date(s) when those exceedances occurred. Values in the “State 24-hr” column represent the number of exceedances/total days on which valid 24-hr averages were measured and the percentage of exceedances out of the total number of days with valid concentrations. The most recent fall quarter is bolded.

Quarter Period	Quarter Name	Exceedances of PM ₁₀ Standard	
		Federal 24-hr 150 µg/m ³	State 24-hr 50 µg/m ³
09/01/02–11/30/02	Baseline Year	0	51/77 (66%)
09/01/08–11/30/08	2008 Fall	1 (10/09/08)	12/73 (16%)
09/01/09–11/30/09	2009 Fall	1 (10/27/09)	78/89 (19%)
09/01/10–11/30/10	2010 Fall	0	8/86 (9%)
09/01/11–11/30/11	2011 Fall	1 (11/02/11)	20/89 (22%)
09/01/12–11/30/12	2012 Fall	1 (10/26/12)	9/85 (11%)
09/01/13–11/30/13	2013 Fall	1 (10/04/13)	14/89 (16%)
09/01/14–11/30/14	2014 Fall	0	5/91 (5%)
09/01/15–11/30/15	2015 Fall	0	10/86 (12%)
09/01/16–11/30/16	2016 Fall	1 (11/27/16)	12/48 (25%)
09/01/17–11/30/17	2017 Fall	3 (10/09/17, 10/24/17, 11/21/17)	27/87 (32%)
09/01/18–11/30/18	2018 Fall	1 (11/8/2018)	14/89 (16%)
09/01/19–11/30/19	2019 Fall	5 (10/25/19, 10/31/19, 11/16/19, 11/25/19, 11/26/19)	39/74 (53%)
09/01/20–11/30/20	2020 Fall	4 (09/09/20, 10/16/20, 10/26/20, 11/26/20)	67/91 (74%)
09/01/21–11/30/21	2021 Fall	3 (09/23/21, 10/11/21, 11/25/21)	71/89 (80%)
09/01/22–11/30/22	2022 Fall	1 (11/16/22)	46/91 (51%)
09/01/23–11/30/23	2023 Fall	2 (10/29/23, 10/30/23)	30/86 (35%)
09/01/24–11/30/24	2024 Fall	0	9/87 (11%)

Table 3. Number of federal and state 24-hr PM₁₀ standard exceedances during fall quarters for the baseline year (2002) and 2008–2024 at the Community site. Values in the “Federal 24-hr” column represent the number of exceedances and the date(s) when those exceedances occurred. Values in the “State 24-hr” column represent the number of exceedances/total days on which valid 24-hr averages were measured and the percentage of exceedances out of the total number of days with valid concentrations. The most recent fall quarter is bolded.

Quarter Period	Quarter Name	Exceedances of PM ₁₀ Standard	
		Federal 24-hr 150 µg/m ³	State 24-hr 50 µg/m ³
09/01/02–11/30/02	Baseline Year	0	8/33 (24%)
09/01/08–11/30/08	2008 Fall	0	12/90 (13%)
09/01/09–11/30/09	2009 Fall	1 (10/27/2009)	11/78 (14%)
09/01/10–11/30/10	2010 Fall	0	7/91 (8%)
09/01/11–11/30/11	2011 Fall	0	11/88 (13%)
09/01/12–11/30/12	2012 Fall	0	5/90 (6%)
09/01/13–11/30/13	2013 Fall	0	7/85 (8%)
09/01/14–11/30/14	2014 Fall	0	0/91 (0%)
09/01/15–11/30/15	2015 Fall	0	0/90 (0%)
09/01/16–11/30/16	2016 Fall	0	1/50 (2%)
09/01/17–11/30/17	2017 Fall	0	4/92 (5%)
09/01/18–11/30/18	2018 Fall	0	2/88 (3%)
09/01/19–11/30/19	2019 Fall	3 (10/10/19, 10/11/19, 10/30/19)	17/90 (19%)
09/01/20–11/30/20	2020 Fall	0	11/90 (13%)
09/01/21–11/30/21	2021 Fall	1 (10/11/21)	1/84 (2%)
09/01/22–11/30/22	2022 Fall	0	0/91 (0%)
09/01/23–11/30/23	2023 Fall	0	3/91 (4%)
09/01/24–11/30/24	2024 Fall	0	2/91 (3%)

4. Average and Maximum BC and PM₁₀ Concentrations

Although no federal or state standards exist for BC concentrations in ambient air, BC is a measurable component of ambient air that correlates well with DPM. Because of growing evidence that DPM is associated with several negative health effects, BC is often measured to quantify the relative amounts of DPM in ambient air. Findings from the Multiple Air Toxics Exposure Study V (MATES V) conducted by the South Coast Air Quality Management District (South Coast AQMD) found DPM to be the most important toxic air pollutant contributing to negative health impacts in the Los Angeles basin (South Coast Air Quality Management District, 2015).

BC is measured by an Aethalometer, which passes air through a filter tape to trap suspended particles. Light-absorbing particles attenuate a light beam projected through the deposit. The buildup of BC on the air sampling tape causes an artifact that affects the accuracy of the measured concentration (Drinovec et al., 2015; Allen, 2014), subjecting Aethalometers to a saturation effect. Instrument response is dampened with heavier loading (i.e., higher concentrations) of BC aerosols. This artifact can cause BC concentration readings to be lower than the true concentration. However, mathematical methods to correct the BC concentration values are available and widely used. All reported BC values to date from the 29th Quarterly Report (winter 2015) have now been adjusted for the Landfill, Landfill North, and Community sites. Because the compensation process changes the reported concentrations, and because uncompensated values were used in previous reports, prior-year BC concentrations listed in this report do not match concentrations reported before the 29th Quarterly Report. All available BC data listed in this Quarterly Report have been compensated (data were unavailable from the baseline year).

The 24-hr average and maximum compensated BC concentrations collected during the 2024 fall quarter, the compensated BC data from the 16 previous fall quarters, and the uncompensated data from the baseline year are listed in [Table 4](#) for the Landfill site and [Table 5](#) for the Community site. The 2024 fall quarter 24-hr average BC concentration are the second lowest on record at the Landfill and Community sites.

Table 4. The 24-hr BC concentrations for fall quarters from the baseline year (2002) and each year from 2008–2024 at the Landfill site. Uncompensated BC values are reported for the 2002 fall quarter. The most recent fall quarter is bolded.

Quarterly Period	Quarter Name	BC Concentrations (µg/m ³)	
		Average 24-Hr	Maximum 24-Hr
09/01/02–11/30/02	Baseline Year	1.26 ^a	2.83 ^a
09/01/08–11/30/08	2008 Fall	1.47	2.88
09/01/09–11/30/09	2009 Fall	1.21	3.45
09/01/10–11/30/10	2010 Fall	0.87	2.74
09/01/11–11/30/11	2011 Fall	1.07	2.71
09/01/12–11/30/12	2012 Fall	0.95	2.63
09/01/13–11/30/13	2013 Fall	0.92	2.32
09/01/14–11/30/14	2014 Fall	0.81	2.42
09/01/15–11/30/15	2015 Fall	0.48	1.17
09/01/16–11/30/16	2016 Fall	0.59	1.64
09/01/17–11/30/17	2017 Fall	0.54	1.30
09/01/18–11/30/18	2018 Fall	0.55	1.43
09/01/19–11/30/19	2019 Fall	0.51	1.62
09/01/20–11/30/20	2020 Fall	0.75	1.90
09/01/21–11/30/21	2021 Fall	0.63	1.83
09/01/22–11/30/22	2022 Fall	0.48	1.62
09/01/23–11/30/23	2023 Fall	0.29	0.74
09/01/24–11/30/24	2024 Fall	0.33	0.70

^a Uncompensated BC values.

Table 5. The 24-hr BC concentrations for fall quarters from the baseline year (2002) and each year from 2008–2024 at the Community site. Uncompensated BC values are reported for the 2002 fall quarter. The most recent fall quarter is bolded.

Quarterly Period	Quarter Name	BC Concentrations (µg/m ³)	
		Average 24-Hr	Maximum 24-Hr
09/01/02–11/30/02	Baseline Year	1.31 ^a	2.92 ^a
09/01/08–11/30/08	2008 Fall	0.86	6.15
09/01/09–11/30/09	2009 Fall	1.00	3.23
09/01/10–11/30/10	2010 Fall	0.80	2.47
09/01/11–11/30/11	2011 Fall	0.95	2.55
09/01/12–11/30/12	2012 Fall	0.77	2.07
09/01/13–11/30/13	2013 Fall	0.57	1.63
09/01/14–11/30/14	2014 Fall	0.83	1.98
09/01/15–11/30/15	2015 Fall	0.64	1.68
09/01/16–11/30/16	2016 Fall	0.64	1.54
09/01/17–11/30/17	2017 Fall	0.46	1.22
09/01/18–11/30/18	2018 Fall	0.57	1.55
09/01/19–11/30/19	2019 Fall	0.48	1.88
09/01/20–11/30/20	2020 Fall	0.68	2.05
09/01/21–11/30/21	2021 Fall	0.55	1.51
09/01/23–11/30/22	2022 Fall	0.47	1.65
09/01/23–11/30/23	2023 Fall	0.30	0.71
09/01/24–11/30/24	2024 Fall	0.41	1.10

^a Uncompensated BC values.

Distributions of 24-hr average PM₁₀ and BC data from fall quarters 2008 – 2024 (shown as notched box-whisker plots)⁵ and percentile trends for these metrics are shown in [Figures 2 through 5](#).

⁵ A notched box-whisker plot shows the entire distribution of concentrations for each year. Each box illustrates the 25th (lower box extent), 50th (median, midline), and 75th (upper box extent) percentiles. The extent of the box indicates the interquartile range (IQR), where 50% of the data lie. The whiskers indicate values that are up to 1.5 times the IQR from the 25th or 75th percentile. Data outside of the IQR are referred to as “outliers” and are plotted individually. The boxes are notched (narrowed) at the median and return to full width at the 95% lower- and upper-confidence interval values (i.e., the extents of the notches indicate the range in which the median falls with 95% confidence). If the notches of any two boxes do not overlap, there is strong evidence that the medians are statistically different at the 95% confidence level.

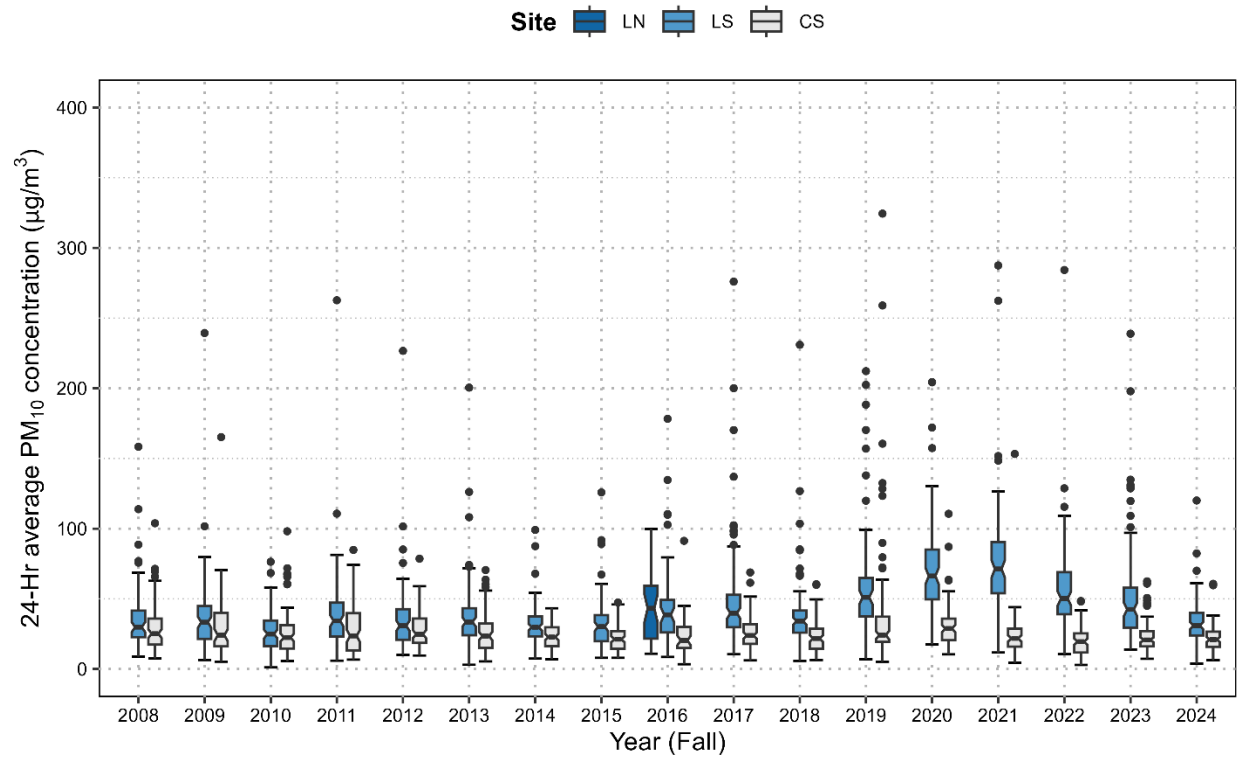


Figure 2. Distribution of 24-hr average PM₁₀ concentrations at the Sunshine Canyon Landfill North, Landfill, and Community sites during fall (September-November) quarters from 2008–2024.

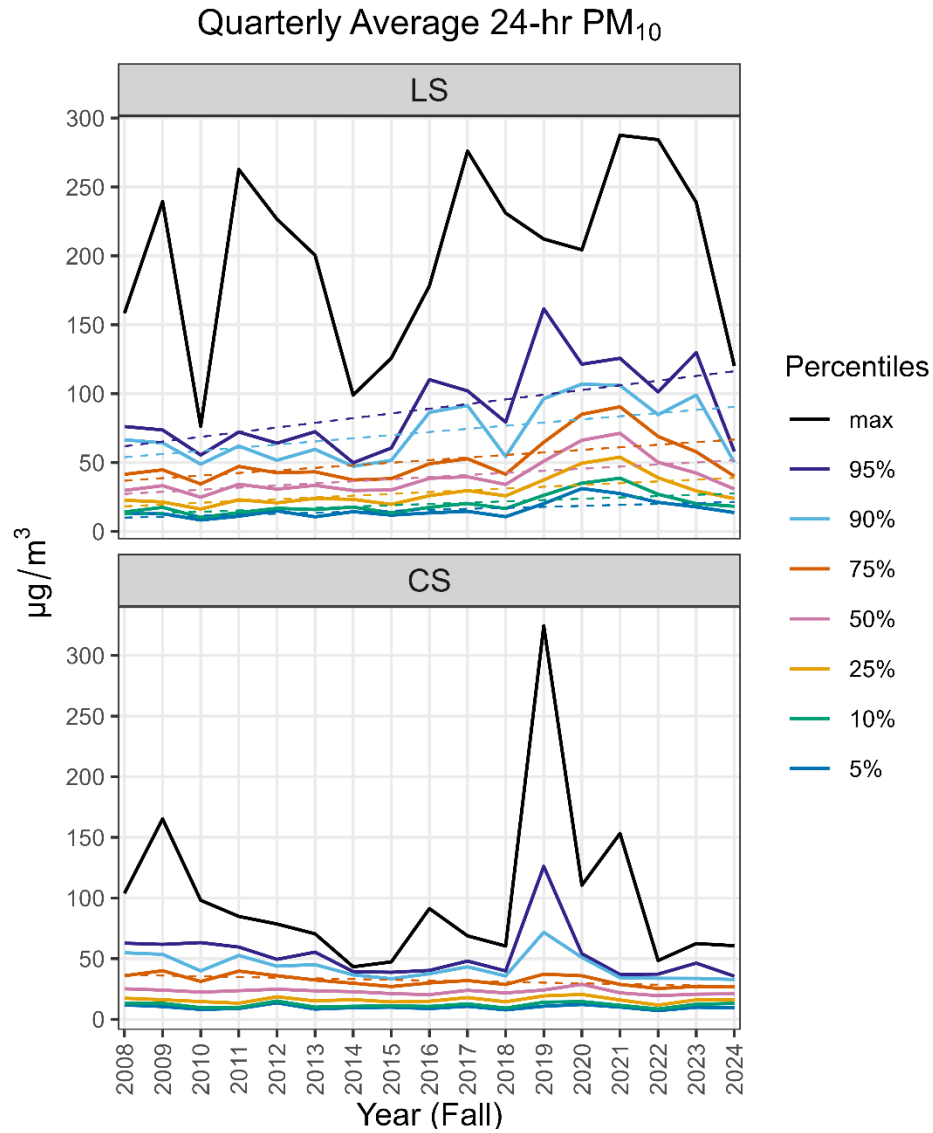


Figure 3. Trends of 24-hr average PM₁₀ maximum and percentiles at the Sunshine Canyon Landfill site (top) and Community site (bottom) during fall (September–November) quarters from 2008–2024. The dashed lines denote statistically significant linear trends. Statistical significance was defined at the 95% confidence level ($p \leq 0.05$).

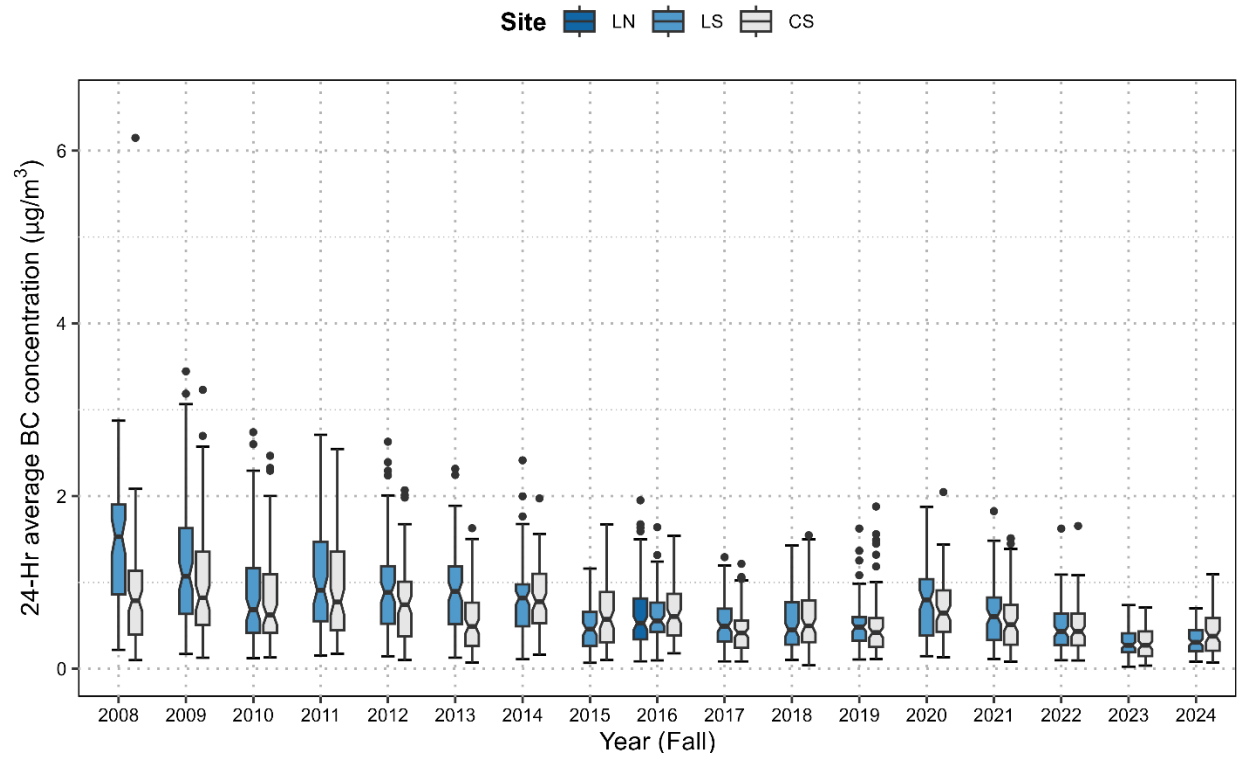


Figure 4. Distribution of 24-hr average BC concentrations at the Sunshine Canyon Landfill North, Landfill, and Community sites during fall (September-November) quarters from 2008–2024.

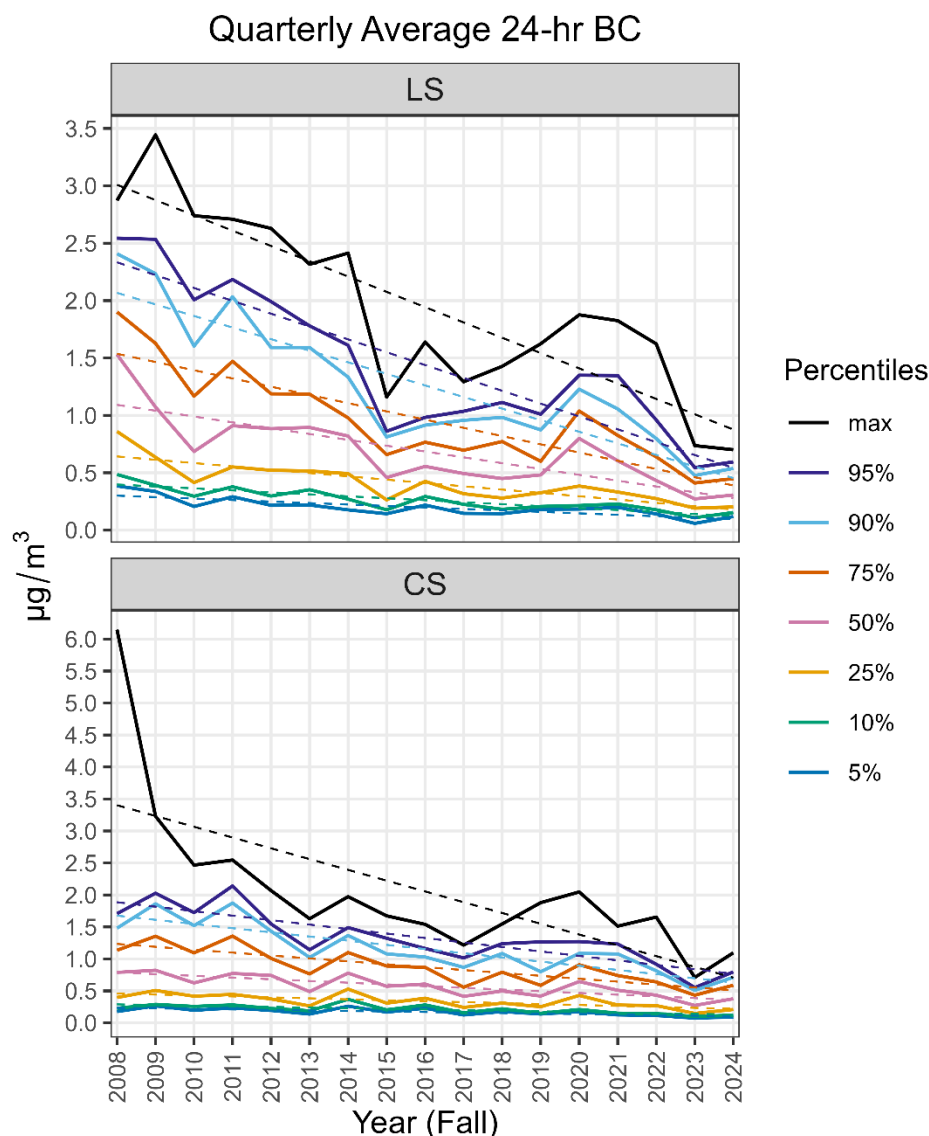


Figure 5. Trends of 24-hr average BC maximum and percentiles at the Sunshine Canyon Landfill site (top) and Community site (bottom) during fall (September–November) quarters from 2008–2024. The dashed lines denote statistically significant decreasing linear trends. Statistical significance was defined at the 95% confidence level ($p \leq 0.05$). Note: the y-axis scale is larger in the Community site plot than the Landfill site plot.

At this time of year, the median 24-hr average PM₁₀ concentrations measured at the Community site are usually lower than those at the Landfill site (Figure 2). This situation remained true in the 2024 fall quarter. As indicated by the nonoverlapping notches in the box-whisker plot, the difference between the median 24-hr PM₁₀ concentrations at the Community and Landfill sites is statistically significant. At the Landfill site, there is a statistically significant increasing trend in all percentiles but not the maximum (Figure 3). However, nearly all percentile levels have been decreasing since the 2021 fall quarter. At the Community site, there is a statistically significant decreasing trend for the 75th percentile.

During fall quarters, the median 24-hr average BC concentrations are not usually significantly different between the Landfill and the Community sites, as indicated by the overlapping notches in the box-whisker plot (Figure 4). In the 2024 fall quarter, the median 24-hr average BC concentration at the Community site was larger than at the Landfill site. As BC concentrations at both sites continue to decrease, as indicated by the quarterly trends, it is expected that median 24-hr average BC concentrations will converge to a similar value. There is some year-to-year variability in median 24-hr average BC concentrations over the 17 recorded consecutive years, but the range of 24-hr average BC values has generally decreased over time at both monitoring sites. Both the Landfill site and the Community site recorded the second-lowest median 24-hr average BC concentrations of all fall quarters monitored during this study.

There is a statistically significant decreasing trend in all percentiles and the maximum concentration at both the Landfill site and Community site during fall quarters over the observational record.

5. Field Operations

Tables 6 and 7 list dates and major tasks associated with visits to the Landfill and Community sites during the 2024 fall quarter.

Table 6. Landfill monitoring site visits, field maintenance, and operations.

Date of Site Visit	Description of Work
10/3/2024	Checked tape supply
10/21/2024	Changed tape on BAM
11/7/2024	Restarted Aethalometer Meteorological tower site inspection Temporarily secured the meteorological tower and foundation
11/14/2024	Rebuilt sample pump on BAM Performed flow checks on BAM
11/19/2024	Cleaned sample inlet and down tube
11/21/2024	Meteorological tower replacement

Table 7. Community site visits, field maintenance, and operations.

Date of Site Visit	Description of Work
10/3/2024	Restarted BAM Checked tape supply Changed tape on Aethalometer
11/7/2024	Restarted BAM and Aethalometer
11/14/2024	Rebuilt sample pump on BAM Performed flow checks on BAM
11/19/2024	Cleaned sample inlet and down tube Replaced O-rings on inlet
1/3/2024 ^a	Rebooted router

^a The next site visit that occurred after the current quarter is included in this report. The information from this site visit is used to assess the quality of the last portion of data from the current quarter.

Aethalometer and BAM flow rates measured with a National Institute of Standards and Technology (NIST)-traceable flow standard are listed in Table 8. BAM flow rates are volumetric (i.e., they depend on local temperature and pressure), and Aethalometer flow rates are at standard temperature and

pressure. The target flow rate of the BAM is 16.7 liters per minute (lpm) volumetric to meet the 10-micron particle cut point of the inlet, with an acceptable range of 16.0–17.3 lpm. The Aethalometer has no particle size cut point.

Table 8. Flow rates for the BAM PM₁₀ and Aethalometer BC monitors at the Landfill and Community sites. “Ref.” is the Reference and “Aeth.” is the Aethalometer.

Location	Date	Flow Rate (lpm)					
		As Found		As Left		As Found	
		BAM	Ref.	BAM	Ref.	Aeth.	Ref.
Sunshine Canyon Landfill	11/14/2024	16.7	16.7	16.7	16.7	n/a	n/a
Sunshine Canyon Community	11/14/2024	16.7	16.7	16.67	16.7	n/a	n/a

6. References

- Allen G. (2014) Analysis of spatial and temporal trends of black carbon in Boston. Report prepared by Northeast States for Coordinated Air Use Management (NESCAUM), Boston, MA, January. Available at <http://www.nescaum.org/documents/analysis-of-spatial-and-temporal-trends-of-black-carbon-in-boston/nescaum-boston-bc-final-rept-2014.pdf/>.
- Drinovec L., Močnik G., Zotter P., Prévôt A.S.H., Ruckstuhl C., Coz E., Rupakheti M., Sciare J., Müller T., Wiedensohler A., and Hansen A.D.A. (2015) The "dual-spot" Aethalometer: an improved measurement of aerosol black carbon with real-time loading compensation. *Atmospheric Measurement Techniques*, 8, 1965-1979, doi: 10.5194/amt-8-1965-2015. Available at <http://www.atmos-meas-tech.net/8/1965/2015/amt-8-1965-2015.pdf>.
- South Coast Air Quality Management District (2015) Multiple Air Toxics Exposure Study in the South Coast Air Basin: MATES IV. Final report, August. Available at <http://www.aqmd.gov/docs/default-source/air-quality/air-toxic-studies/mates-iv/mates-iv-final-draft-report-4-1-15.pdf?sfvrsn=7>.