

**Sunshine Canyon Landfill
Independent Monitor
Quarterly Site Monitoring Status Report
October 1, 2014 – December 31, 2014**

Prepared For:

City of Los Angeles Department of City Planning

And

County of Los Angeles Department of Regional Planning



Prepared By:



16431 Scientific Way
Irvine, California 92618

Prepared On:

February 16, 2015

[This page is blank for printing]

CERTIFICATION STATEMENT

February 16, 2015

The attached Quarterly Site Monitoring Status Report for the Sunshine Canyon Landfill dated February 16, 2015 is the Fourth Quarterly Report for 2014, issued by UltraSystems. This report covers the monitoring period from October 1, 2014 through December 31, 2014 and is prepared for the City of Los Angeles Department of City Planning and the County of Los Angeles Department of Regional Planning.

I, James T. Aidukas, Project Manager for the Mitigation Monitoring Services of the Sunshine Canyon Landfill, certify that the statements in the Quarterly Report and the referenced monthly reports reflect the site conditions observed and compliance status noted by me and other qualified experts during the stated site visits.

Signed,



James T. Aidukas

Project Manager

[This page is blank for printing]

Contents

| | |
|-------------------------------------|----|
| Quarterly Status Report..... | 1 |
| Site Visits During the Quarter..... | 2 |
| Definition of Terms..... | 2 |
| Status Summary | 2 |
| Compliant..... | 2 |
| Non-Compliant | 3 |
| Further Review Needed..... | 3 |
| Summary of Requested Documents..... | 14 |
| Conclusions | 15 |

Sunshine Canyon Landfill Mitigation Monitoring – 2014 Fourth Quarter Summary/ City
(see Excel spreadsheets)

Sunshine Canyon Landfill Mitigation Monitoring – 2014 Fourth Quarter Summary/ County
(see Excel spreadsheets)

Appendices

Appendix I – Excel Summary Further Review Needed Comments Reference I-n through I-q

Appendix II – Photo Location Map and Relevant Site Photos

Appendix III – Quarterly Site Visits

Attendees by Date and Monitoring Site Reports

Appendix IV – Meeting Logs

[This page is blank for printing]

Quarterly Status Report

This Quarterly Status Report is a compilation of the period's monthly Site Monitoring. After each site visit, the UltraSystems monitors who went to the Sunshine Canyon Landfill site each wrote a Mitigation Monitoring Site Report, updated the Mitigation Monitoring Summary Excel Tables for the City and County of Los Angeles noting any conditions and/or mitigation measures that need further review, and documented these areas in an appendix for that site visit date. Any issues that required immediate attention were reported to Republic staff and the appropriate staff at the City of Los Angeles Planning Department, the County of Los Angeles Department of Regional Planning, the County of Los Angeles Department of Public Works and the Sunshine Canyon Landfill Local Enforcement Agency (SCL-LEA).

The Sunshine Canyon Landfill City and County Summary Tables record each site visit and frequency of monitoring of specific conditions and/or mitigation measures, by date. When a condition and/or mitigation measure is monitored, a check mark is made under the date that it was monitored, and the status of being compliant with the conditions and/or mitigation measures' requirements observed during monitoring is recorded. Tasks with a yearly or non-ongoing monitoring frequency are denoted by a forward slash (/) in subsequent date columns. In the status column, the letter "C" is put next to the task if it is Compliant; the letters "NC" are noted if the task status is Non-Compliant; and the letters "FRN" are used if Further Review is Needed for meeting the requirements of the conditions and/or mitigation measures.

Under the Further Review Needed/ Comment column, observed conditions that have been noted as "FRN" in the status column refer to appendices which detail what was observed during the site monitoring. When the conditions and/or mitigation measures that were previously noted as "FRN" are fully compliant, an "R" is placed in the Resolved column and a "C" replaces the "FRN" in the status column. Also noted in the FRN-Comment column are those action items that would improve monitoring efficiency by having reports and documents readily available. These are summarized in the Compliant with Comments section of the monthly monitoring records and the Summary of Requested Documents of the Quarterly Reports. The City and County Excel Spreadsheets record the site conditions observed during monitoring.

This Quarterly Report provides the City of Los Angeles Department of Planning and the County of Los Angeles Department of Regional Planning with a concise status of the Mitigation Measure Monitoring for the period of October 1, 2014 to December 31, 2014. It includes:

1. The City and County Mitigation Monitoring Summary Excel Tables for December 2014. These tables record the areas of monitoring completed during the fourth quarter of 2014 and the status of being compliant;
2. A Status Summary of Non-Compliant, Further Review Needed and Compliant with the requirements of the conditions and/or mitigation measures;
3. Photo Location Map and Relevant Site Photos showing site conditions of key areas of the landfill during the quarter;
4. Site visit attendees by date of site visit and the mitigation monitoring report for each monitor;

5. Meeting logs documenting any meetings with Republic Services staff and/or public agencies and the topics discussed; and
6. Any site monitoring documenting site changes.

Site Visits During the Quarter

Four site visits were performed by UltraSystems during the October through December 2014 quarter in order to observe operational site activities and determine compliant status with conditions and/or mitigation measures. They were performed on October 8, 2014; October 22, 2014; November 10, 2014; and December 18, 2014. The previously discussed conditions and/or mitigation measures were tracked by each specialist who visited, and observations were documented. Site conditions were noted to be: Compliant, Non-Compliant, or Further Review Needed. If a Condition was found to be Non-Compliant or observed as having Further Review Needed, a reference was made to an appendix which details what was observed by the monitor.

Definition of Terms

Compliant is defined as complying with the City and County conditions and/or mitigation measures.

Non-compliant is defined as not complying with the City and County conditions and/or mitigation measures.

Further Review Needed is defined as implementing plans (agency-approved, if required) to fully comply with a condition and/or mitigation measure. Some plans, especially vegetation, require an extended time frame, and immediate compliance is not possible.

Further Review Needed/ Comments is defined as comments documenting site conditions observed during monitoring visits that are not fully compliant but action is being taken in order to obtain full compliance with conditions and/or mitigation measures. Recommendations from the monitor, as appropriate, and status from Republic Services (Republic) may also be given. Comments are also made for compliant conditions where the comment notes action that may be taken to provide documents to improve monitoring efficiency and/or document issues observed during the monitoring.

Resolved is defined as action taken or activities completed to fully comply with conditions and/or mitigation measures.

Status Summary

This section summarizes the conditions and/or mitigation measures that were monitored during the quarterly reporting period and their respective statuses. The Sunshine Canyon Mitigation Monitoring Spreadsheets for the City and County show the conditions and/or mitigation measures monitored during the quarter. Also included in this report are relevant photos in Appendix II.

Compliant

The majority of the conditions and/or mitigation measures monitored were observed to be compliant. There are City and County conditions which are compliant, but are noted as

having corresponding comments that refer to the appendices. The Compliant with Comments section of the monthly monitoring records provide a summary of these comments where monitoring efficiency would be improved by having reports and documents readily available and/or document issues observed during monitoring. These are summarized in the Summary of Requested Documents in the Quarterly Report.

Non-Compliant

During UltraSystems' four site visits, no Non-Compliant conditions and/or mitigation measures were noted. Also, it must be understood that any monitoring related to landfill gas and odors are not part of the UltraSystems Monitoring Program at this time. These issues are currently being handled by a multi-agency team, which is led by the South Coast Air Quality Management District (SCAQMD).

Further Review Needed

The following conditions and/or mitigation measures were found not to be fully compliant, but were being worked on in order to obtain full compliance. This section summarizes the progress being made toward being fully compliant. When a condition and/or mitigation measure progresses from FRN to fully compliant, it is noted as Resolved in this section.

Q-B.2.c (City)

Ancillary Uses and Facilities. The subject property may only be used for the following uses and facilities. These ancillary uses and facilities described in the July 1997 Draft Subsequent EIR, pages 2-38 through 2-43, and may be located on the applicant's property generally in conformance with the diagram attached as Exhibit e-4, and during the life of the landfill, may be moved or relocated following commencement of landfilling operations as necessary to accommodate development of the ultimate landfill footprint.

Biota-4.29 (County)

San Diego Horned Lizard: Impact on the San Diego horned lizard can be mitigated to a level of less than significant by restoring coastal sage scrub habitat. This will create a temporal loss of the species, but the population should recover following restoration of this habitat. Topsoils should be selected that are friable to suit lizard habitat requirements.

Biota-4.30 (County)

California Gnatcatcher: Surveys shall be conducted for California gnatcatchers prior to Game Permit onsite grading to determine the status of this Game species within development areas.

Biota-4.33 (County)

Migratory Bird Treaty Act: To prevent the loss of an active migratory bird nest, vegetation shall not be cleared during the breeding season (i.e. March 15 to August 1).

Biota-4.34 (County)

Raptor nests: If habitat removal is proposed during the raptor breeding season (i.e. March to July), a survey shall be conducted for active nesting areas.

Current Status/Comments – During the October 8, 2014 site monitoring, it was observed that the access road realignment had grading being done to previously graded slopes in order to winterize

the slopes. On November 10, 2014, the monitor observed that the access road realignment area had best management practices (BMPs) put on all of the disturbed slopes. BMPs observed within disturbed slopes included jute netting, straw wattles, and straw bales. Three water runoff control basins were also constructed between the condensate treatment plant and the terminal basin. One additional basin was constructed just west of the oil field access road. Prior to resuming grading activity that includes habitat removal, surveys should be conducted to assess the presence of migratory birds, California gnatcatcher, raptors and other birds, and the San Diego Horned Lizard. Any areas not previously surveyed for archeological and paleontological resources should also be surveyed.

Q-B.2.d (City)

Phase III (10 Year Phase Review). Phase III of the Landfill may occur following review by the Director of Planning of the operational history with the assistance of the Technical Advisory Committee, Independent Consultants, and/or Local Enforcement Agency.

Current Status/Comments – The City's 10-year Phase III review shall begin in 2015 and shall be concluded within six months. This review will most likely start after the next TAC meeting in April 2015.

Q-C.10.c (City)

The operator shall submit, as part of its annual report, an evaluation of the feasibility of beneficial uses of the landfill gas collected at the site such as landfill-gas-to-energy.

Odor/Landfill Gas - 7.07 (County)

The permittee will recover and sell as much gas as is technically and economically feasible to reduce total air quality emissions from the landfill operations. It is expected that the technical and economic feasibility of commercial recovery and sale of landfill gas as a renewable energy resource will occur at levels below 40 MMCFD. The gas collection system will be installed in increments to allow for maximum gas recovery.

Gas - 52 (County)

To the extent technically and economically feasible, the Permittee shall use Landfill gas for energy generation at the Facility or other beneficial uses, rather than flaring, and shall obtain all applicable local, state, and/or federal approvals for any such use. Notwithstanding the forgoing, the Permittee shall be exempt from this Condition No. 52 if, as a 'part of its annual report required by Part X of the IMP, the Permittee determines that any such activity or project is infeasible, which determination shall be subject to the review and approval of the Director of Public Works.

The Permittee shall also install and maintain a landfill gas collection system complying with SCAQMD requirements, which uses best available control technology to control the lateral migration of gases to the satisfaction of the Director of Public Works, County LEA, and SCAQMD. In addition to the other requirements of this Condition No. 52, Landfill gas flares shall be installed below the adjacent interior ridges of the site, unless otherwise required by the SCAQMD, and the flames shall be totally contained within the stacks. Flame arrestors shall be provided to the satisfaction of the County Forester and Fire Warden.

Current Status/Comments – On October 22 and 23, 2014, the gas-to-energy operator performed a two-day scheduled turn-around shut-down. The shut-down and equipment inspection confirmed that all gas-to-energy systems were performing well. As a result of the inspections, minor modifications were made to the pretreatment operation and the off-gas flare.

During the November 10, 2014 monitoring, the gas-to-energy operator stated that a two-day Edison outage was being planned in December 2014 or January 2015.

M-4.1.1(6) (City)

Revegetation and erosion control procedures on all exposed slopes shall be implemented. The erosion controls to be implemented at the site shall include soil stabilization measures and revegetation in accordance with the approved revegetation plan as approved by the City Building and Safety Department. Interceptor ditches shall be designed to divert storm runoff to a sedimentation basin.

M-4.2.11(23) (City)

Disturbed areas shall be revegetated with an interim ground cover as specified in the proposed revegetation program. Excavation will proceed in a manner to reduce the amount of graded areas at any given time.

M-4.2.12 (City)

Site Erosion

c. A temporary vegetation cover shall be established on all slopes that are to remain inactive for a period longer than 180 days.

Geology-1.13 (County)

Revegetation and erosion control of all exposed slopes will be an ongoing process. The erosion controls to be implemented at the site will include soil stabilization measures and revegetation in accordance with the approved Revegetation Program. The installation of interceptor ditches shall be designed for the diversion of storm runoff to sedimentation basins. Sediment traps will be used at points of runoff concentration along the perimeter of exposed slopes surfaces.

Condition: Approval of drainage plan. Retention of a consulting horticulturalist/Registered Professional Forester and an independent qualified biologist by the permittee for ongoing supervision of revegetation programs. Review and monitoring of planting programs by County Forester.

Geology-1.14 (County)

To prevent soil erosion on the face of the landfill, interim vegetation measures will be taken after placement of the temporary soil layer (even though the area may be disturbed by future filling operations). Vegetative cover will be placed as in the approved Revegetation Program.

Condition: Retention of a consulting horticulturalist/Registered Professional Forester and an independent qualified biologist by the permittee for ongoing supervision of revegetation programs. Review and monitoring of planting programs by County Forester.

Biota – 4.42 (County)

Areas inactive for 180 days or longer will be planted with interim vegetation as approved by County biologist. Records will be kept to track fill areas of the site which are transferred to an inactive status so that appropriate dust control and revegetation measures can be implemented.

Air Quality - 6.02 (County)

Dust Control will also be accomplished through the temporary revegetation of the landfill surface. A temporary revegetation of the landfill surface, and a temporary vegetation cover will be established on all slopes that are to remain inactive for a period longer than 180 days. Specifications of temporary revegetation measures will be provided in the Revegetation Plan submitted to the County

biologist for approval, the Closure and Postclosure Maintenance Plans, the Condition Use Permit, and Conditions of Project Approval.

Visual-10.08 (County)

Cover/Revegetation Requirements

The permittee shall comply with the following cover and re-vegetation requirements at the Landfill:

(1). The permittee shall apply a temporary hydroseed vegetation cover on any slope or other Landfill area that is projected to be inactive for a period greater than 180 days, as set forth in the IMP. The permittee shall promptly notify the County LEA and the Department of Public Works of any such slope or area;

Revegetation Requirements

(5) Notwithstanding the foregoing, the permittee shall not be bound by the previous provisions of this Condition No. 44, but instead by the requirements of the County LEA, so long as the Limits of Fill are not exceeded, if in consultation with the Department of Public Works, the County LEA determines that a different re-vegetation design or plan:

(1) would better protect public health and safety;

(2) would enable revegetation of the final slopes at least as well as shown in Exhibit "B" described in subsection D, above; and/or experts, including an independent, qualified bio(3) would be required because the minimum standards adopted by the CIWMB have been amended;

(6) the permittee shall employ an expert or biologist, to satisfy this Condition No. 44. Soil sampling and laboratory analysis shall be conducted in all areas that are required to be re-vegetated before any re-vegetation occurs to identify chemical or physical soil properties that may adversely affect plant growth or establishment. Soil amendments and fertilizer recommendations shall be applied and plant materials selected, based on the above referenced testing procedures and results. To the extent possible, plant types shall blend with species indigenous to the area, be drought tolerant, and be capable of rapid growth. The selected plants shall not include nonindigenous species that are likely to be invasive of adjacent natural areas.

Biota - Revegetation - 44.A (County)

A. The Permittee shall apply a temporary hydroseed vegetation cover on any slope or other Landfill area that is projected to be inactive for a period greater than 180 days, as set forth in the IMP. The Permittee shall promptly notify the SCL-LEA and the Department of Public Works of any such slope or area.

Revegetation - 44.F/44.F CUP (County)

F. The Permittee shall employ an expert or experts, including an independent, qualified biologist, to satisfy this Condition No. 44. Soil sampling and laboratory analysis shall be conducted in all areas that are required to be re-vegetated before any re-vegetation occurs to identify chemical or physical soil properties that may adversely affect plant growth or establishment. Soil amendments and fertilizer recommendations shall be applied and plant materials selected, based on the above-referenced testing procedures and results. To the extent possible, plant types shall blend with species indigenous to the area, be drought tolerant, and be capable of rapid growth. The selected plants shall not include non-indigenous species that are likely to be invasive of adjacent natural areas.

Current Status/Comments – During the October 8 and October 22, 2014 site monitoring, the interim and/or inactive slopes hydroseeded in June had no signs of seed germination. The lack of rain and no irrigation could be the cause.

In early April through June 2014, approximately 30 acres of the areas that were hydroseeded included the County's south facing slopes as well as some of the City's north and south facing slopes

(see Appendix II, Photographs 361 through 378). During the November 10, 2014 monitoring, the recent rains had not resulted in germination of the areas that were hydroseeded. During the December 18, 2014 monitoring, it was observed that since the recent rain events, the hydroseeded areas were showing signs of seed germination and vegetation growth.

M-4.4(11) (City)

An operations checklist shall be used by a registered engineering geologist for surveys following all earthquake events measuring 5.0 on the Richter scale or greater near the project site. A comparison of operating parameters and site conditions before and after major earthquake events shall be made to verify that systems are operational as designed. Final designs for major engineered structures shall be based on the results of the detailed stability analyses of potential seismic events.

Current Status/Comments – During the October 22, 2014 site monitoring, it was observed that a new foundation and enclosure for the on-site seismic detection and recorder equipment was installed at the recycled water handling facility location. Republic staff stated that new seismic detection and recording equipment has been placed on order. The schedule for the installation of the new equipment had not been set.

M-4.2.13/29, 30, 32, 33, 34 (City)

The natural biological processes that generate odors in a landfill through anaerobic decomposition cannot be prevented or avoided. However, the LFGs shall be prevented from escaping to the atmosphere through the use of control measures. These measures include using daily and intermediate cover material over deposited wastes, filling any surface cracks with clean dirt as necessary, and extracting LFG through the use of an LFG collection and recovery system and destroying collected gases by combustion.

Operational techniques shall be utilized to control odor sources at the landfill. The size of the working face shall be limited so that the area of waste exposed to the atmosphere is kept to a minimum.

The LFG collection and recovery system shall be installed in phases as each portion of the landfill site is filled. The final system shall contain a network of gas extraction wells, collection system piping, and flaring facilities. Because the LFG generation begins at lower levels of volume and increases during the landfill site life, the gas will be flared initially until sufficient quantities are available for processing into electricity.

If an odor problem should develop, appropriate control measures shall be implemented. These measures include the application of additional dirt daily cover material or more frequent application of the cover material to seal the landfill surface, or adjustments to the wells, equipment, and operation of the LFG collection and recovery system.

To ensure that odors are kept to a minimum, the following odor/LFG monitoring program shall be implemented for the proposed landfill project. The monitoring program shall comply with the requirements of SCAQMD Rule 1150.1 and include:

- a. Sample Probe Installation: One monitoring probe per 1,000 feet or as identified by South Coast Air Quality Management District (SCAQMD) and/or Local Enforcement Agency (LEA) in the landfill expansion, and one probe per 650 feet or as identified by SCAQMD and/or LEA in the City Inactive landfill along the landfill perimeter, or whichever is more restrictive shall be installed to identify potential areas of subsurface landfill gas (LFG) migration. These probes shall be monitored to ensure that quantities of LFG beyond regulatory standards do not vent offsite through subsurface soils.*
- b. Integrated Landfill Surface Sampling: The landfill surface shall be monitored to ensure that the average concentration of total organic compounds over the landfill surface does not exceed SCAQMD's standard of 25 ppm.*
- c. Ambient Air Samples: 24-hour integrated gas samples and required meteorological data shall be taken to assess any impact the landfill is having on the ambient air quality at the landfill perimeter.*

d. *Instantaneous Landfill Surface Monitoring:* Spot checks on the landfill surface shall be made to determine the maximum concentration of total organic compounds measured as methane, measured at any one point on the surface of the landfill does not exceed the SCAQMD's standard of 500 ppm.

e. *Regular Monitoring and Annual Testing:* LFG concentrations at perimeter probes, gas collection system headers, the landfill surface, and in ambient air downwind of the landfill shall be monitored once per month or less frequently (but no less than quarterly) as required by the SCAQMD. The LFG collection system shall be adjusted and improved based on quarterly monitoring data and annual stack testing results.

Odor/Landfill Gas - 7.06 (County)

If an odor problem should develop, appropriate control measures shall be implemented. These measures include the application of daily cover material or more frequent application of the cover material to seal the landfill surface, or adjustments to the wells, equipment, and operation of the LFG collection and recover system.

Amendment 45.N - 4.a, 4.c, 4.d (County)

Identify and provide status on the measures currently being implemented as required by the AQMD's Order for Abatement.

An odor patrol program, which would include the following at a minimum:

- *Provide a trained technician to conduct odor patrols in the surrounding neighborhoods at a frequency of one patrol per hour from 6 a.m. to 10 a.m., Monday through Saturday, and during adverse wind conditions.*
- *If odor is detected, identify its potential and/or actual source, including those that may not be related to the Landfill's operation, such as an odorous trash dumpster or transfer trucks.*
- *If odor is determined to be related to the Landfill's operation, take immediate action to reduce the odor. Document the streets patrolled on a map, time of the patrol, potential source of odor, and immediate actions taken by the Landfill.*
- *A landfill gas mitigation plan in preparation for the next rainy season since landfill gas emissions from either the landfill surface or landfill gas control equipment is cited as a potential contributor in the AQMD's Order for Abatement. The plan should include the following at a minimum:*
 - *Description of the site's current Gas Monitoring and Control Plan, including a map showing locations of gas monitoring probes, gas extraction wells, horizontal and vertical gas collection lines, etc.*
 - *Compliance history of the site's landfill gas migration control program from January 1, 2009, to the present quarter as well as any corrective actions.*
 - *Discuss the impacts of the most recent heavy rains on the landfill gas collection system, including identifying locations of damage due to soil erosion, as well as any corrective actions or mitigation measures.*
 - *A work plan that includes preventive measures, such as identifying and filling any surface cracks and installing additional extraction wells, as well as contingency measures.*
 - *An implementation schedule for the above work plan.*

Amendment 45.N - 5 (County)

Include in the Quarterly Dust and Odor Reports, which are required by CUP Condition No. 45.N, the status and effectiveness of mitigation measures 1 through 3 above, and the Odor Mitigation Plan.

Current Status/Comments – Compliance with these mitigation measures, concerning landfill gas monitoring and odor control and detection, is being monitored by a multi-agency team led by the SCAQMD. Only obvious gas emission sources, lack of cover, or exposed trash resulting in odor and gas emissions observed during the monitoring visit will be reported.

During the October 8, 2014 site monitoring, the condensate treatment plant had liquids being pumped into a truck and there were localized odors coming from the truck and Baker tank at the facility.

During the October 22, 2014 site monitoring, the condensate treatment facility had strong localized odors coming from the Baker tank and the transfer pump truck vent when it was loading condensate to haul to the leachate treatment facility. The transfer pipelines have not yet been replaced. The 55-gallon carbon drum vent scrubbers at the leachate treatment facility were not eliminating tank vent odors. Replacements should be investigated.

There was odor noticed coming from the sewer pumping underground vaults. Republic staff was notified of these conditions.

During the November 10, 2014 site monitoring, the condensate treatment facility process was being modified to allow for higher liquid levels in the process tanks and to allow for higher vapor pressure liquids. Republic and Invirotreat staff indicated that the constituents of the condensate has changed now that the gas-to-energy plant was operating, requiring the process change. The 55-gallon carbon drum vent scrubbers at the leachate treatment and sewer connection locations were replaced with new carbon drums.

During the December 18, 2014 site monitoring, the odorizer system along the Old City South Berm was working and a light flowery smell was noted only when we were within a foot or two of the pipe.

M-4.3.1(36) (City)

To ensure that infiltration of surface water into the closed landfill cells is minimized, surface runoff shall be intercepted and diverted around the landfill. The method of diversion used at the project site shall include the use of lined interceptor ditches placed along the edges of the landfill areas. This system of ditches shall flow into monitored sedimentation basins. After sediment content has been reduced, surface waters shall flow into the existing flood control channel directly east of the project site entrance.

Surface Water - 2.03 (County)

As development of the site proceeds, surface drainage control facilities will be maintained so that surface water runoff is diverted from the working faces and isolated from contact with the waste. Onsite drainage control channels will be designed per CCR, Title 23, Division 3, Chapter 15, Article 3, § 2546, which mandates the requirements for a capital storm event (100 year, 24-hour precipitation).

Current Status/Comments – It was observed during the November 10, 2014 site monitoring that there is no clear drainage pattern on the decks and there are numerous low spots where water may pond and infiltrate. This condition was previously noted on the prior August 27, 2014 site monitoring.

M-4.3.1(37) (City)

As development of the site proceeds, surface drainage systems shall be maintained so that surface runoff is diverted away from working slopes and isolated from landfilled refuse. Onsite drainage channels would be designed per CC, Title 23, Division 3, Chapter 15, Article 3, §2533(C), and County of Los Angeles Public Works Department, Flood Control Division requirements.

M-4.3.1(38) (City)

Permanent bench drainage ditches shall be installed when final cover is placed on completed portions of the landfill. These ditches shall be lined. Temporary unlined drainage facilities consisting of diversion ditches (V-ditches) where necessary shall directly intercept natural surface runoff. Any intermittent channel flow in the existing canyon bottom shall be captured, channeled, and conveyed into a sedimentation basin. Diversion ditches shall convey surface runoff from the undisturbed areas to the permanent perimeter ditches for safe transport around the landfill footprint. Surface covers of various types, from mulches to vegetation, shall be used to retard erosion from areas of disturbance. In addition, areas of disturbance shall be kept at a minimum during active filling operations.

Surface Water - 2.12 (County)

Permanent bench drainage ditches shall be installed when final cover is placed on completed portions of the landfill. These ditches shall be lined. Temporary unlined drainage facilities consisting of diversion ditches (V-ditches) where necessary shall directly intercept natural surface runoff. Any intermittent channel flow in the existing canyon bottom shall be captured, channeled, and conveyed into a sedimentation basin. Diversion ditches shall convey surface runoff from the undisturbed areas to the permanent perimeter ditches for safe transport around the landfill footprint. Surface covers of various types, from mulches to vegetation, shall be used to retard erosion from areas of disturbance. In addition, areas of disturbance shall be kept at a minimum during active filling operations.

Current Status/Comments – The majority of inactive and /or interim areas that have been disturbed have no temporary or permanent vegetation or other surface cover to retard erosion and reduce airborne dust. The use of irrigation or other options to establish vegetation or provide erosion control should be investigated by Republic's biological consultant.

M-4.3.1(40) (City)

In order to monitor the effectiveness of those measures designed to prevent pollution from entering the offsite stormwater system, the project proponent shall be required to apply for coverage under the SWRCB General Construction Activities Stormwater Permit Programs.

M-4.3.1(45) (City)

An erosion control plan would be implemented by the project proponent to prevent stormwater pollution from construction activity. Construction materials, equipment and vehicles would be stored or parked in areas protected from stormwater runoff. Construction material loading and unloading would be in designated areas to minimize any washout due to stormwater runoff. Pre-construction controls would be implemented to include the use of a sandbagging system, including sandbag check dams and sandbag desilting basins, which would be used to limit runoff velocities and minimize sediment in storm water runoff.

Surface Water 2.14 (County)

An erosion control plan would be implemented by the project proponent to prevent stormwater pollution from construction activity. Construction materials, equipment and vehicles would be stored or parked in areas protected from stormwater runoff. Construction material loading and unloading would be in designated areas to minimize any washout due to stormwater runoff. Pre-construction controls would be implemented to include the use of a sandbagging system, including sandbag check dams and sandbag desilting basins, which would be used to limit runoff velocities and minimize sediment in storm water runoff.

Current Status/Comments – During the November 10, 2014 site monitoring, it was observed that the winterization of the slopes was finished. Jute netting was placed on the soil slopes with straw

wattles. A three-tier basin system was installed below the condensate treatment facility. An additional basin was installed below the slopes west of the oil field access road.

M-4.3.1(46) (City)

A preventive maintenance program would be implemented by the project proponent, including inspection of facility equipment, systems, and stormwater management devices to detect conditions that may cause breakdowns or failures resulting in discharge of materials into stormwater. This program applies to the onsite drainage ditches; rip-rap; berms and dikes; dust control; silt fences; diversion grading; and pavement surfaces. Each system and piece of stationary equipment would be inspected monthly. Procedures for inspection would vary, due to the piece of equipment or system. However, the major elements of the inspection program would include checking for cracks or structural failures, inspecting parts or pieces of equipment nonfunctioning, checking for the degradation or deterioration of operating units, and investigating the need for cleaning or emptying units. A summary report of these monitoring results and the corrective actions taken will be disseminated in each newsletter with a more detailed report on the web site and in the annual report.

Surface Water 2.15 (County)

Surface Water Preventive Maintenance Program

A preventive maintenance program will be implemented by the permittee, including inspection of facility equipment, systems, and stormwater management devices to detect conditions that may cause breakdowns or failures resulting in discharge of materials into stormwater. This program applies to the onsite drainage ditches, rip-rap, berms and dikes, dust control, silt fences, diversion grading, and pavement surfaces. Each system and piece of equipment will be inspected monthly.

Procedures for inspection would vary based on the piece of equipment or system. However, the major elements of the inspection program will include checking for cracks or structural failures, inspecting parts or pieces of equipment nonfunctioning, checking for the degradation or deterioration of operating units, and investigating the need for cleaning or emptying units.

Current Status/Comments – On November 10, 2014 it was observed that conditions of a portion on the westside drainage channel between Basin A and Basin D, noted in previous site visits as needing repair, has been cleaned with all soil and debris removed and the concrete ground on the upstream side to minimize the risk of hydraulic jump or underflow. Republic staff stated that the westside drainage channel has been configured so that only flow from the watershed (i.e. the hills on the westside) adjacent to the channel would discharge to this channel and that no runoff flow would be coming from Basin D. Republic staff stated that maintenance will be done when other westside channel work is scheduled.

M-4.4.1(60) (City)

Venturan Coastal Sage Scrub

A detailed conceptual mitigation plan shall be prepared by the project proponent and contain specific information on planting, maintenance, and monitoring. A revegetation plan that includes Coastal sage scrub restoration can feasibly occur onsite. The implementation of this plan will provide onsite mitigation greater than 1:1 to offset the loss of coastal sage scrub.

Biota - 4.27 (County)

Venturan Coastal Sage Scrub: A detailed conceptual mitigation plan shall be prepared by the permittee and shall contain specific information on planting, maintenance, and monitoring. A revegetation plan that includes coastal sage scrub restoration can feasibly occur onsite. The implementation of this plan will provide onsite mitigation greater than 1:1 to offset the loss of coastal sage scrub.

Current Status/Comments – On December 18, 2014 it was observed that City Deck C sage mitigation plants have greened up and grown from the recent rains and cool weather. The California sage and other non-Atriplex (salt tolerant) plants were observed doing well. The County sage area was much greener and appeared more filled in with vegetative growth due to the recent rains.

M-4.4.2/69 (City)

Potential candidate mitigation sites have been identified by the project proponent in conjunction with resource agencies for consideration to compensate for impacts on riparian and wetland resources as a result of project development. These sites include Bull Creek, Bee Canyon and East Canyon, which are located proximate to the project site. Prior to the development of any detailed mitigation plans and drawings, the final selection will be determined cooperatively by the CDFW, Corps, SWRCB, and other regulatory agencies in conjunction with the City and project proponent.

Current Status/Comments – Republic staff informed the monitor on December 18, 2014 that the City of Los Angeles and Republic have drafted an agreement for using a portion of the Chatsworth Reservoir as a wetlands and riparian mitigation site. The Chatsworth mitigation site agreement has been reviewed by the United States Army Corps of Engineers (USACE), and they have provided Republic and the City with comments. The City's legal department is now reviewing the USACE comments.

M-4.7.1(86) (City)

Maintain and enhance the 100-acre open space buffer area in the southern portion of the site by implementing revegetation programs in conjunction with onsite programs.

Current Status/Comments – During the October 22, 2014 site monitoring, some of the oak mitigation trees along the oil field access road near the proposed environmental center location were showing stress and dieback due to a lack of water. Part of the drip irrigation system was not working. Republic staff stated that they would investigate the dieback and rectify any problems.

M-4.9.3(109) (City)

On a once-a-week basis, or as needed, the landfill operator shall mobilize cleanup crews to provide litter pickup services within the O'Melveny Park area, along Balboa Boulevard and San Fernando Road, and in other residential areas located in proximity to the landfill, that may be affected by offsite litter migration. On a daily basis, the cleanup crews shall inspect the surrounding area to assess if more frequent cleanups are required. Fences outside of the landfill perimeter may be visible to the surrounding community.

Visual 10.11 (County)

The permittee's onsite Litter Control Program will include continuous patrol of the access road and working face during hours of operations and mobilize clean-up crews on a regular basis for litter pick-up along designated public access routes, O'Melveny Park and the adjacent neighborhood.

Current Status/Comments – During the October 22, 2014 site monitoring, it was observed that bags of litter and a mattress box spring was seen on Sierra Highway near the I-14 overpass. Dumped debris was seen south of the landfill entrance in front of and behind the wall at the gas odorization facility.

On November 10, 2014 it was observed that the illegally dumped mattress box spring and bags of trash observed on the prior site monitoring visit had not been removed. This illegally dumped material is outside of the area covered by the landfill clean-up condition. This dumping was reported to the City of Los Angeles.

On December 18, 2014 it was observed that the piles of rock and rubble seen on San Fernando Road south of the Old Road had not been removed and had grown in size. Republic was going to ask the LEA if they could assist in getting it removed.

M-4.9.4(125) (City)

The landfill operator shall maintain perimeter fencing in and around the site in accordance with CCR, Title 14, § 17658 to discourage illegal entry to the landfill. Where existing topography conditions create an effective barrier, no perimeter fencing shall be installed. Entrance and access gates shall remain locked when the landfill facility is not in operation. All existing perimeter fencing shall be inspected on a routine basis by the landfill operator, and necessary repairs shall be made to ensure a continued deterrent for unauthorized entry to the project site. Additionally, the landfill operator shall maintain posted "no trespassing" signage at the exterior perimeter fencing nearest the project site entrance.

Current Status/Comments – During the October 22, 2014 site monitoring, it was observed that the south perimeter gate in the oil field was closed but not locked.

M-4.19.1(183) (City)

Prior to the commencement of initial earth excavation, specific sections of the project area shall be resurveyed as a precautionary measure to minimize potential loss of undiscovered archaeological resources. Specific areas within the project site to be resurveyed shall be determined by the intended cut-and-fill areas proposed for landfill development. As new areas for excavation are identified, an evaluation of those areas shall be made based on the prior survey results and consultation with appropriate technical specialists. Factors to be considered for delineation of areas to be resurveyed will be known site selection factors associated with aboriginal groups suspected of having inhabited the general area. These factors include proximity to water, the type of vegetation (e.g., food source, shelter, and fuel), and the topography (e.g., slope and aspect).

Ecological Significance 62 (County)

The Permittee shall develop and implement a program to identify and conserve all significant archaeological and paleontological materials found onsite pursuant to Part VII of the IMP. If the Permittee finds any evidence of aboriginal habitation or fossils during earthmoving activities, Landfill operations shall immediately cease in that immediate area, and the evidence and area shall be preserved until a qualified archaeologist or paleontologist, as appropriate, makes a determination as to the significance of the evidence. If the determination indicates that the archaeological or paleontological resources are significant, the resources shall be recovered to the extent practicable prior to resuming Landfill operations in that immediate area of the Landfill.

Current Status/Comments – During the October 8, 2014 site monitoring, it was noted that the archaeological surveys were performed on the area west of the office facilities and area south of there where site grading is being done. No items of concern were found. Archaeological reports are on file and are available in Republic's offices.

M-4.19.2(187) (City)

Prior to the commencement of initial earth excavation, specific sections of the City/County Landfill Project area shall be resurveyed as a precautionary measure to minimize potential loss of undiscovered paleontological resources. Specific sections of the project area to be resurveyed shall be as determined by the intended cut-and-fill areas proposed for landfill development. As new areas for excavation are identified by the project proponent, an evaluation of those areas shall be made based on the prior survey results and consultation with appropriate technical specialists.

Ecological Significance 62 (County)

The Permittee shall develop and implement a program to identify and conserve all significant archaeological and paleontological materials found onsite pursuant to Part VII of the IMP. If the Permittee finds any evidence of aboriginal habitation or fossils during earthmoving activities, Landfill operations shall immediately cease in that immediate area, and the evidence and area shall be preserved until a qualified archaeologist or paleontologist, as appropriate, makes a determination as to the significance of the evidence. If the determination indicates that the archaeological or paleontological resources are significant, the resources shall be recovered to the extent practicable prior to resuming Landfill operations in that immediate area of the Landfill.

Current Status/Comments – During the 2014 4th Quarter monitoring, it was observed that paleontological surveys and field inspections were performed on the area where site grading is being done west of the landfill offices during the whole quarter. Whale bone and other marine fragments were found. No items were recoverable in one piece. Paleontological reports are on file and are available in Republic's offices.

Summary of Requested Documents

The following documents, reports and plans are recommended to be made available at the site for agency and monitor review in order to assist in streamlining the monitoring process.

- a) Design report for the Leachate Collection and Treatment Facility (LCTF).
- b) Current Fill Sequence Plan.
- c) A plan showing areas inactive for 180 days or longer with records tracking fill areas and interim reclamation and revegetation, including the timing of proposed work, as well as a plan showing current and projected areas to be within ten feet of the limits of fill.
- d) Maps showing areas that are at final elevation and bench ditches that will connect to drainage ditches to protect against natural surface runoff.
- e) The current erosion control plans should be available for agency and monitor review.
- f) Site drainage plans, including surface and underdrains systems with complementing revegetation plan.
- g) A plan/ report of the liner interceptor ditches design/ installation to ensure that surface runoff is appropriately conveyed to the existing flood control channel directly east of the project site entrance.
- h) Comprehensive geotechnical reports.

- i) A preventative maintenance plan and summary of monitoring reports of inspections of facility equipment, systems and stormwater management devices to detect conditions that may cause breakdowns or failures resulting in discharge of materials into stormwater.

Conclusions

In this reporting period, UltraSystems has monitored the conditions and/or mitigation measures for the City/ County, as shown on the Mitigation Monitoring Summary Excel spreadsheets.

As shown by the Non-Compliant and Further Review Needed sections above, the landfill is actively working toward being fully compliant with conditions and/or mitigation measures, with no non-compliant conditions observed. Furthermore, monitoring of the tasks on these Excel spreadsheets tracks progress toward being fully compliant. Notwithstanding the above, air quality issues are not being actively monitored by UltraSystems, and may not be compliant.

The 2014 Fourth Quarter Mitigation Monitoring Summary Excel spreadsheets track the progress and completion of tasks as they were accomplished during this quarterly period.

[This page is blank for printing]

Sunshine Canyon Landfill City Mitigation Monitoring Summary

(10-01-2014 through 12-31-2014)

| Reference # | Mitigation # | City Mitigation Measures and Conditions Monitored by Discipline | Monitoring Frequency | Third Quarter | | | | | | | | | | | | Fourth Quarter | | | | | | | | | | | | | | | | | | |
|-----------------|--------------|---|----------------------|---------------|---------|----------------------------------|-----------|-----------|---------|----------------------------------|-----------|-----------|---------|----------------------------------|-----------|----------------|---------|----------------------------------|-----------|-----------|---------|----------------------------------|-----------|------------|---------|----------------------------------|-----------|------------|---------|----------------------------------|-----------|------------|---------|----------------------------------|
| | | | | 7/22/2014 | Status* | Further Review Needed/Comments** | Resolved* | 8/12/2014 | Status* | Further Review Needed/Comments** | Resolved* | 8/27/2014 | Status* | Further Review Needed/Comments** | Resolved* | 9/23/2014 | Status* | Further Review Needed/Comments** | Resolved* | 10/8/2014 | Status* | Further Review Needed/Comments** | Resolved* | 10/22/2014 | Status* | Further Review Needed/Comments** | Resolved* | 11/10/2014 | Status* | Further Review Needed/Comments** | Resolved* | 12/18/2014 | Status* | Further Review Needed/Comments** |
| Project Manager | | | | | | | | | | | | | | | | | | | | | | | | | | | | | | | | | | |
| | | | | | | | | | | | | | | | | | | | | | | | | | | | | | | | | | | |
| | | | | | | | | | | | | | | | | | | | | | | | | | | | | | | | | | | |
| Q - A.3. | | Definitions | info | / | | | | / | | | | / | | | | / | | | | / | | | / | | | / | | | | / | | | | |
| Q - A.6. | | Submit Annual Reports | June yearly | / | | | | / | | | | / | | | | / | | | | / | | | / | | | / | | | | / | | | | |
| Q - A.10. | | Provision of Fees | yearly | / | | | | / | | | | / | | | | / | | | | / | | | / | | | / | | | | / | | | | |
| Q - B.1. | | Permitted/Prohibited Landfill Uses | yearly | / | | | | / | | | | / | | | | / | | | | / | | | / | | | / | | | | / | | | | |
| Q - B.2 | | Approval of Landfill | ongoing | ✓ | C | NONE | | ✓ | C | NONE | | ✓ | C | NONE | | ✓ | C | NONE | | ✓ | C | NONE | | ✓ | C | NONE | | ✓ | C | NONE | | ✓ | C | NONE |
| Q - B.2.c. | | Ancillary Uses and Facilities | ongoing | ✓ | C | I-j | | ✓ | C | NONE | | ✓ | C | NONE | | ✓ | C | NONE | | ✓ | C | I-n | | ✓ | C | NONE | | ✓ | C | I-p | | ✓ | C | NONE |
| | | Ancillary Uses and Facilities | | | | | | | | | | | | | | | | | | | | | | | | | | | | | | | | |
| Q - B.2.d (3) | | 10 Year Phase Review | 2015 | ✓ | C | I-j | | / | | | | / | | | | / | | | | / | | | / | | | / | | | | / | C | I-q | | |
| | | 10 Year Phase Review | | | | | | | | | | | | | | | | | | | | | | | | | | | | | | | | |
| Q - B.4.d. | | Inert/Exempt Materials | info | / | | | | / | | | | / | | | | / | | | | / | | | / | | | / | | | | / | | | | |
| Q - B.5.a. | | Prohibited Waste | info | / | | | | / | | | | / | | | | / | | | | / | | | / | | | / | | | | / | | | | |
| Q - B.6. | | Waste Diversion | ongoing | ✓ | C | NONE | | ✓ | C | NONE | | ✓ | C | NONE | | ✓ | C | NONE | | ✓ | C | NONE | | ✓ | C | NONE | | ✓ | C | NONE | | ✓ | C | NONE |
| Q - C.3.g. | | Paved Access Roads | ongoing | ✓ | C | NONE | | ✓ | C | NONE | | ✓ | C | NONE | | ✓ | C | NONE | | ✓ | C | NONE | | ✓ | C | NONE | | ✓ | C | NONE | | ✓ | C | NONE |
| Q - C.3.h. | | Surfacing of Access Roads | ongoing | ✓ | C | NONE | | ✓ | C | NONE | | ✓ | C | NONE | | ✓ | C | NONE | | ✓ | C | NONE | | ✓ | C | NONE | | ✓ | C | NONE | | ✓ | C | NONE |
| Q - C.5. | | Graffiti Removal and Deterrence | ongoing | ✓ | C | NONE | | ✓ | C | NONE | | ✓ | C | NONE | | ✓ | C | NONE | | ✓ | C | NONE | | ✓ | C | NONE | | ✓ | C | NONE | | ✓ | C | NONE |
| Q - C.10.c. | | Evaluation of Beneficial Gas Usage | June yearly | | | | | | | | | ✓ | C | I-l | | ✓ | C | I-m | | | | | | | | | | | ✓ | C | I-q | | | |
| Q - C.10.d. (1) | | Alternative Fuel Vehicles | status | | | | | | | | | | | | | | | | | | | | | | | | | | | | | | | |
| Q - C.10.d. (2) | | Alternative Fuel Refuse Collection Trucks | status | | | | | | | | | | | | | | | | | | | | | | | | | | | | | | | |
| Q - C.12.a. | | Technical Advisory Committee | info | / | | | | / | | | | / | | | | / | | | | / | | | / | | | / | | | | / | | | | |

* C = Compliant, NC = Non-Compliant, FRN = Further Review Needed, R = Resolved

** See Appendix I for Comments

Checkmark = Condition or mitigation was monitored

/ = Yearly or non-ongoing monitoring frequency

Sunshine Canyon Landfill City Mitigation Monitoring Summary

(10-01-2014 through 12-31-2014)

| Reference # | Mitigation # | City Mitigation Measures and Conditions Monitored by Discipline | Monitoring Frequency | Third Quarter | | | | | | | | | | | | Fourth Quarter | | | | | | | | | | | | | | | | | | | |
|-------------|--------------|---|----------------------|---------------|---------|----------------------------------|-----------|-----------|---------|----------------------------------|-----------|-----------|---------|----------------------------------|-----------|----------------|---------|----------------------------------|-----------|-----------|---------|----------------------------------|-----------|------------|---------|----------------------------------|-----------|------------|---------|----------------------------------|-----------|------------|---------|----------------------------------|-----------|
| | | | | 7/22/2014 | Status* | Further Review Needed/Comments** | Resolved* | 8/12/2014 | Status* | Further Review Needed/Comments** | Resolved* | 8/27/2014 | Status* | Further Review Needed/Comments** | Resolved* | 9/23/2014 | Status* | Further Review Needed/Comments** | Resolved* | 10/8/2014 | Status* | Further Review Needed/Comments** | Resolved* | 10/22/2014 | Status* | Further Review Needed/Comments** | Resolved* | 11/10/2014 | Status* | Further Review Needed/Comments** | Resolved* | 12/18/2014 | Status* | Further Review Needed/Comments** | Resolved* |
| | | | | | | | | | | | | | | | | | | | | | | | | | | | | | | | | | | | |
| Q - C.12.c. | | Contract for Mitigation Monitoring | info | / | | | | / | | | | / | | | | / | | | | / | | | | / | | | | / | | | | / | | | |
| Q - C.12.c. | | Contract for Mitigation Monitoring-5 years | info | / | | | | / | | | | / | | | | / | | | | / | | | | / | | | | / | | | | / | | | |
| | | | | | | | | | | | | | | | | | | | | | | | | | | | | | | | | | | | |
| T - 4 | | Fire Plan | status | | | | | | | | | | | | | | | | | | | | | | | | | | | | | | | | |
| T - 5.j. | | Trip Diversion | status | ✓ | C | NONE | | ✓ | C | NONE | | ✓ | C | NONE | | ✓ | C | NONE | | ✓ | C | NONE | | ✓ | C | NONE | | ✓ | C | NONE | | ✓ | C | NONE | |
| T - 6 | | Satisfactory Street Lighting | status | c | | | | / | | | | / | | | | / | | | | / | | | | / | | | | / | | | | / | | | |
| | | | | | | | | | | | | | | | | | | | | | | | | | | | | | | | | | | | |
| M - 4.1.1 | 7 | Reabandonment Procedures | status | ✓ | C | NONE | | ✓ | C | NONE | | ✓ | C | NONE | | ✓ | C | NONE | | ✓ | C | NONE | | ✓ | C | NONE | | ✓ | C | NONE | | ✓ | C | NONE | |
| M - 4.1.4 | 11 | Post-5.0 Earthquake Analysis | upon event | / | NA | NONE | | / | NA | NONE | | / | NA | NONE | | / | NA | NONE | | / | NA | NONE | | ✓ | C | I-o | | / | NA | NONE | | / | NA | NONE | |
| M - 4.2.12 | 27 | Heavy Equipment Operations | ongoing | ✓ | C | NONE | | ✓ | C | NONE | | ✓ | C | NONE | | ✓ | C | NONE | | ✓ | C | NONE | | ✓ | C | NONE | | ✓ | C | NONE | | ✓ | C | NONE | |
| M - 4.2.12 | | Heavy Equipment Operations | ongoing | ✓ | C | NONE | | ✓ | C | NONE | | ✓ | C | NONE | | ✓ | C | NONE | | ✓ | C | NONE | | ✓ | C | NONE | | ✓ | C | NONE | | ✓ | C | NONE | |
| M - 4.2.12 | 28 | Site Erosion-Cover | ongoing | ✓ | C | NONE | | ✓ | C | NONE | | ✓ | C | NONE | | ✓ | C | NONE | | ✓ | C | NONE | | ✓ | C | NONE | | ✓ | C | NONE | | ✓ | C | NONE | |
| M - 4.2.12 | | Site Erosion-Cell Height | ongoing | ✓ | C | NONE | | ✓ | C | NONE | | ✓ | C | NONE | | ✓ | C | NONE | | ✓ | C | NONE | | ✓ | C | NONE | | ✓ | C | NONE | | ✓ | C | NONE | |
| M - 4.2.12 | | Site Erosion-Sealant | ongoing | ✓ | C | NONE | | ✓ | C | NONE | | ✓ | C | NONE | | ✓ | C | NONE | | ✓ | C | NONE | | ✓ | C | NONE | | ✓ | C | NONE | | ✓ | C | NONE | |
| M - 4.2.13 | 29 | LFG Control Measures | ongoing | / | | I-j | | / | | I-k | | / | | I-l | | / | | I-m | | / | | I-n | | / | | I-o | | / | | I-p | | / | | I-q | |
| M - 4.2.13 | 30 | Operational Odor Control Techniques | ongoing | ✓ | C | NONE | | ✓ | C | NONE | | ✓ | C | NONE | | ✓ | C | NONE | | ✓ | C | NONE | | ✓ | C | NONE | | ✓ | C | NONE | | ✓ | C | NONE | |
| M - 4.2.13 | 31 | Solid Waste Compaction | ongoing | ✓ | C | NONE | | ✓ | C | NONE | | ✓ | C | NONE | | ✓ | C | NONE | | ✓ | C | NONE | | ✓ | C | NONE | | ✓ | C | NONE | | ✓ | C | NONE | |
| M - 4.2.13 | 32 | LFG Collection and Recovery System | ongoing | / | | I-j | | / | | I-k | | / | | I-l | | / | | I-m | | / | | I-n | | / | | I-o | | / | | I-p | | / | | I-q | |
| M - 4.2.13 | 33 | Odor Control Measures | ongoing | / | | I-j | | / | | I-k | | ✓ | FRN | I-l | | / | | I-m | | ✓ | FRN | I-n | | ✓ | FRN | I-o | | ✓ | C | I-p | | ✓ | C | I-q | |
| M - 4.2.13 | 34 | Odor/LFG Monitoring | ongoing | / | | I-j | | / | | I-k | | / | | I-l | | / | | I-m | | / | | I-n | | / | | I-o | | / | | I-p | | / | | I-q | |
| | | Periodic LFG Monitoring | | / | | I-j | | / | | I-k | | / | | I-l | | / | | I-m | | / | | I-n | | / | | I-o | | / | | I-p | | / | | I-q | |
| M - 4.3.2 | 52 | LFG Migration Mitigation | ongoing | / | NA | NONE | | / | NA | NONE | | / | NA | NONE | | / | NA | NONE | | / | NA | NONE | | / | NA | NONE | | / | NA | NONE | | / | NA | NONE | |

* C = Compliant, NC = Non-Compliant, FRN = Further Review Needed, R = Resolved

** See Appendix I for Comments

Checkmark = Condition or mitigation was monitored

/ = Yearly or non-ongoing monitoring frequency

Sunshine Canyon Landfill City Mitigation Monitoring Summary

(10-01-2014 through 12-31-2014)

| Reference # | Mitigation # | City Mitigation Measures and Conditions Monitored by Discipline | Monitoring Frequency | Third Quarter | | | | | | | | | | | | | | | | Fourth Quarter | | | | | | | | | | | | | | | |
|-------------------------------|--------------|---|----------------------|---------------|---------|----------------------------------|-----------|-----------|---------|----------------------------------|-----------|-----------|---------|----------------------------------|-----------|-----------|---------|----------------------------------|-----------|----------------|---------|----------------------------------|-----------|------------|---------|----------------------------------|-----------|------------|---------|----------------------------------|-----------|------------|---------|----------------------------------|-----------|
| | | | | 7/22/2014 | Status* | Further Review Needed/Comments** | Resolved* | 8/12/2014 | Status* | Further Review Needed/Comments** | Resolved* | 8/27/2014 | Status* | Further Review Needed/Comments** | Resolved* | 9/23/2014 | Status* | Further Review Needed/Comments** | Resolved* | 10/8/2014 | Status* | Further Review Needed/Comments** | Resolved* | 10/22/2014 | Status* | Further Review Needed/Comments** | Resolved* | 11/10/2014 | Status* | Further Review Needed/Comments** | Resolved* | 12/18/2014 | Status* | Further Review Needed/Comments** | Resolved* |
| M - 4.3.2 | 57 | Dust Control Water | ongoing | ✓ | C | NONE | | ✓ | C | NONE | | ✓ | C | NONE | | ✓ | C | NONE | | ✓ | C | NONE | | ✓ | C | NONE | | ✓ | C | NONE | | ✓ | C | NONE | |
| M - 4.4.2 | 69 | Offsite Mitigation Sites | status | | | | | | | | | ✓ | FRN | I-I | | | | | | | | | | | | | | | | ✓ | FRN | I-q | | | |
| M - 4.4.2 | 70 | Purchasing Wetland Credit | status | / | | | | / | | | | / | | | | / | | | | / | | | / | | | | / | | | | | | | | |
| M - 4.4.2 | 71 | Funding-Invasive Species Eradication Program | status | / | | | | / | | | | / | | | | / | | | | / | | | / | | | | / | | | | | | | | |
| M - 4.6 | 85 | Site Lighting | status | ✓ | C | NONE | | ✓ | C | NONE | | ✓ | C | NONE | | ✓ | C | NONE | | ✓ | C | NONE | | ✓ | C | NONE | | ✓ | C | NONE | | ✓ | C | NONE | |
| M - 4.7.1 | 86 | Open Space Buffer Area | ongoing | ✓ | C | NONE | | ✓ | C | NONE | | ✓ | C | NONE | | ✓ | C | NONE | | ✓ | C | NONE | | ✓ | FRN | I-o | | ✓ | C | NONE | | ✓ | C | NONE | |
| M - 4.9.3 | 106 | Litter Minimization | ongoing | ✓ | C | NONE | | ✓ | C | NONE | | ✓ | C | NONE | | ✓ | C | NONE | | ✓ | C | NONE | | ✓ | C | NONE | | ✓ | C | NONE | | ✓ | C | NONE | |
| M - 4.9.3 | 107 | Litter/Debris Containment | ongoing | ✓ | C | NONE | | ✓ | C | NONE | | ✓ | C | NONE | | ✓ | C | NONE | | ✓ | C | NONE | | ✓ | C | NONE | | ✓ | C | NONE | | ✓ | C | NONE | |
| M - 4.9.3 | 108 | Vehicle Tarping Requirements | ongoing | ✓ | C | NONE | | ✓ | C | NONE | | ✓ | C | NONE | | ✓ | C | NONE | | ✓ | C | NONE | | ✓ | C | NONE | | ✓ | C | NONE | | ✓ | C | NONE | |
| M - 4.9.3 | 109 | Periodic Offsite Litter Pickup | ongoing | | | | | | | | | | | | | | | | | | | | | | | | | | | | | | | | |
| M - 4.9.3 | 110 | Illegal Dumping Activities | ongoing | | | | | | | | | ✓ | FRN | I-I | | ✓ | FRN | I-m | | | | | ✓ | FRN | I-o | | ✓ | FRN | I-p | | ✓ | C | I-q | | |
| M - 4.9.3 | 111 | Radio Dispatch Litter Control | ongoing | ✓ | C | NONE | | ✓ | C | NONE | | ✓ | C | NONE | | ✓ | C | NONE | | ✓ | C | NONE | | ✓ | C | NONE | | ✓ | C | NONE | | ✓ | C | NONE | |
| M - 4.9.3 | 112 | Litter Control | ongoing | ✓ | C | NONE | | ✓ | C | NONE | | ✓ | C | NONE | | ✓ | C | NONE | | ✓ | C | NONE | | ✓ | C | NONE | | ✓ | C | NONE | | ✓ | C | NONE | |
| M - 4.9.5 | 127 | Address Concerns of Citizens' Advisory Committee | ongoing | / | | | | / | | | | / | | | | / | | | | / | | | / | | | | / | | | | | | | | |
| M - 4.9.6 | 128 | Landfill Gas/Collection System Unsafe Methane Levels | ongoing | ✓ | C | NONE | | ✓ | C | NONE | | ✓ | C | NONE | | ✓ | C | NONE | | ✓ | C | NONE | | ✓ | C | NONE | | ✓ | C | NONE | | ✓ | C | NONE | |
| M - 4.9.6 | 129 | Landfill Gas/Collection System Detection/Training | ongoing | ✓ | C | NONE | | ✓ | C | NONE | | ✓ | C | NONE | | ✓ | C | NONE | | ✓ | C | NONE | | ✓ | C | NONE | | ✓ | C | NONE | | ✓ | C | NONE | |
| M - 4.9.6 | 130 | Landfill Gas/Collection System Risk Mitigation | ongoing | ✓ | C | NONE | | ✓ | C | NONE | | ✓ | C | NONE | | ✓ | C | NONE | | ✓ | C | NONE | | ✓ | C | NONE | | ✓ | C | NONE | | ✓ | C | NONE | |
| M - 4.16.4 | 176 | Reclaimed Water | status | / | | | | / | | | | / | | | | / | | | | / | | | | / | | | | / | | | | | | | |
| M - 4.16.4 | 177 | Water Conservation | ongoing | ✓ | C | NONE | | ✓ | C | NONE | | ✓ | C | NONE | | ✓ | C | NONE | | ✓ | C | NONE | | ✓ | C | NONE | | ✓ | C | NONE | | ✓ | C | NONE | |
| | | | | | | | | | | | | | | | | | | | | | | | | | | | | | | | | | | | |
| Civil & Geotechnical Engineer | | | | | | | | | | | | | | | | | | | | | | | | | | | | | | | | | | | |
| | | | | | | | | | | | | | | | | | | | | | | | | | | | | | | | | | | | |

* C = Compliant, NC = Non-Compliant, FRN = Further Review Needed, R = Resolved

** See Appendix I for Comments

Checkmark = Condition or mitigation was monitored

/ = Yearly or non-ongoing monitoring frequency

Sunshine Canyon Landfill City Mitigation Monitoring Summary

(10-01-2014 through 12-31-2014)

| Reference # | Mitigation # | City Mitigation Measures and Conditions Monitored by Discipline | Monitoring Frequency | Third Quarter | | | | | | | | | | | | | | | | Fourth Quarter | | | | | | | | | | | | | | | |
|-------------|--------------|---|----------------------|---------------|---------|----------------------------------|-----------|-----------|---------|----------------------------------|-----------|-----------|---------|----------------------------------|-----------|-----------|---------|----------------------------------|-----------|----------------|---------|----------------------------------|-----------|------------|---------|----------------------------------|-----------|------------|---------|----------------------------------|-----------|------------|---------|----------------------------------|-----------|
| | | | | 7/22/2014 | Status* | Further Review Needed/Comments** | Resolved* | 8/12/2014 | Status* | Further Review Needed/Comments** | Resolved* | 8/27/2014 | Status* | Further Review Needed/Comments** | Resolved* | 9/23/2014 | Status* | Further Review Needed/Comments** | Resolved* | 10/8/2014 | Status* | Further Review Needed/Comments** | Resolved* | 10/22/2014 | Status* | Further Review Needed/Comments** | Resolved* | 11/10/2014 | Status* | Further Review Needed/Comments** | Resolved* | 12/18/2014 | Status* | Further Review Needed/Comments** | Resolved* |
| | | | | | | | | | | | | | | | | | | | | | | | | | | | | | | | | | | | |
| | | | | | | | | | | | | | | | | | | | | | | | | | | | | | | | | | | | |
| M - 4.1.1 | 2 | Grading Outside of Conceptual Grading Plan Area | ongoing | | | | | | | | | | | ✓ | FRN | I-m | | | | | | | | | | | | | | | | | | | |
| M - 4.1.1 | 3 | Unsuitable Material Removal/Buffer Zones | ongoing | | | | | | | | | | | | | | | | | | | | | | | | | | | | | | | | |
| M - 4.1.1 | 4 | Grading Outside of Landfill Footprint | ongoing | | | | | | | | | | | ✓ | FRN | I-m | | | | | | | | | | | | | | | | | | | |
| M - 4.1.1 | 5 | Grading Activity Compliance | ongoing | | | | | | | | | | | ✓ | FRN | I-m | | | | | | | | | | | | | | | | | | | |
| M - 4.1.2 | 8 | Landslide Guidelines | ongoing | | | | | | | | | | | | | | | | | | | | | | | | | | | | | | | | |
| M - 4.1.2 | 9 | Soil Stabilization | ongoing | | | | | | | | | | | | | | | | | | | | | | | | | | | | | | | | |
| M - 4.1.4 | 10 | Landfill Design | ongoing | | | | | | | | | | | | | | | | | | | | | | | | | | | | | | | | |
| M - 4.1.4 | 11 | Earthquake Operations Checklist | upon event | / | NA | NONE | | / | NA | NONE | | / | NA | NONE | | / | NA | NONE | | / | NA | NONE | ✓ | FRN | I-o | | / | NA | NONE | | / | NA | NONE | | |
| M - 4.1.5 | 12 | Geologic Hazards - Liquefaction | ongoing | | | | | | | | | | | | | | | | | | | | | | | | | | | | | | | | |
| M - 4.1.5 | 13 | Design/Construction-Liquefaction | ongoing | | | | | | | | | | | | | | | | | | | | | | | | | | | | | | | | |
| M - 4.1.5 | 14 | Design/Construction-Containment Structures | ongoing | | | | | | | | | | | | | | | | | | | | | | | | | | | | | | | | |
| M - 4.1.6 | 15 | Refuse Slope Gradients | ongoing | ✓ | C | NONE | | ✓ | C | NONE | | ✓ | C | NONE | | ✓ | C | NONE | | ✓ | C | NONE | ✓ | C | NONE | | ✓ | C | NONE | | ✓ | C | NONE | | |
| M - 4.1.6 | 16 | Cut and Fill Slope Gradients | ongoing | ✓ | C | NONE | | ✓ | C | NONE | | ✓ | C | NONE | | ✓ | C | NONE | | ✓ | C | NONE | ✓ | C | NONE | | ✓ | C | NONE | | ✓ | C | NONE | | |
| M - 4.1.6 | 17 | Final Slope Factors of Safety | ongoing | | | | | | | | | | | | | | | | | | | | | | | | | | | | | | | | |
| M - 4.1.6 | 18 | Survey Monuments | ongoing | | | | | | | | | | | | | | | | | | | | | | | | | | | | | | | | |
| M - 4.3.2 | 47 | Landfill Liner | ongoing | | | | | | | | | | | | | | | | | | | | | | | | | | | | | | | | |
| M - 4.3.2 | 48 | Landfill Liner | ongoing | | | | | | | | | | | | | | | | | | | | | | | | | | | | | | | | |
| M - 4.3.2 | 54 | Preliminary Closure/Postclosure Plan | status | | | | | | | | | | | | | | | | | | | | | | | | | | | | | | | | |
| M - 4.3.2 | 55 | Landfill Design/Operation/Final | status | | | | | | | | | | | | | | | | | | | | | | | | | | | | | | | | |
| M - 4.3.2 | 56 | Cover Application | ongoing | ✓ | C | NONE | | ✓ | C | NONE | | ✓ | C | NONE | | ✓ | C | NONE | | ✓ | C | NONE | ✓ | C | NONE | | ✓ | C | NONE | | ✓ | C | NONE | | |
| M - 4.14.1 | 155 | Access Roadway Grade | ongoing | | | | | | | | | | | | | | | | | | | | | | | | | | | | | | | | |
| M - 4.18 | 178 | Landfill Elevation Exceedance | ongoing | ✓ | C | NONE | | ✓ | C | NONE | | ✓ | C | NONE | | ✓ | C | NONE | | ✓ | C | NONE | ✓ | C | NONE | | ✓ | C | NONE | | ✓ | C | NONE | | |
| | | | | | | | | | | | | | | | | | | | | | | | | | | | | | | | | | | | |

* C = Compliant, NC = Non-Compliant, FRN = Further Review Needed, R = Resolved

** See Appendix I for Comments

Checkmark = Condition or mitigation was monitored

/ = Yearly or non-ongoing monitoring frequency

Sunshine Canyon Landfill City Mitigation Monitoring Summary

(10-01-2014 through 12-31-2014)

| Reference # | Mitigation # | City Mitigation Measures and Conditions Monitored by Discipline | Monitoring Frequency | Third Quarter | | | | | | | | | | | | | | | | Fourth Quarter | | | | | | | | | | | | | | | |
|-------------|--------------|---|----------------------|---------------|---------|----------------------------------|-----------|-----------|---------|----------------------------------|-----------|-----------|---------|----------------------------------|-----------|-----------|---------|----------------------------------|-----------|----------------|---------|----------------------------------|-----------|------------|---------|----------------------------------|-----------|------------|---------|----------------------------------|-----------|------------|---------|----------------------------------|-----------|
| | | | | 7/22/2014 | Status* | Further Review Needed/Comments** | Resolved* | 8/12/2014 | Status* | Further Review Needed/Comments** | Resolved* | 8/27/2014 | Status* | Further Review Needed/Comments** | Resolved* | 9/23/2014 | Status* | Further Review Needed/Comments** | Resolved* | 10/8/2014 | Status* | Further Review Needed/Comments** | Resolved* | 10/22/2014 | Status* | Further Review Needed/Comments** | Resolved* | 11/10/2014 | Status* | Further Review Needed/Comments** | Resolved* | 12/18/2014 | Status* | Further Review Needed/Comments** | Resolved* |
| | | | | | | | | | | | | | | | | | | | | | | | | | | | | | | | | | | | |
| Hydrologist | | | | | | | | | | | | | | | | | | | | | | | | | | | | | | | | | | | |
| | | | | | | | | | | | | | | | | | | | | | | | | | | | | | | | | | | | |
| | | | | | | | | | | | | | | | | | | | | | | | | | | | | | | | | | | | |
| M - 4.1.4 | 11 | Earthquake Operations Checklist | upon event | / | NA | NONE | | / | NA | NONE | | / | NA | NONE | | / | NA | NONE | | / | NA | NONE | | / | NA | NONE | | / | NA | NONE | | / | NA | NONE | |
| M - 4.3.1 | 36 | Surface Water Infiltration Minimization | ongoing | | | | | | | | | | | | ✓ | FRN | I-m | | | | | | | | | ✓ | FRN | I-p | | | | | | | |
| M - 4.3.1 | 37 | Surface Drainage Systems | ongoing | | | | | | | | | | | | ✓ | FRN | I-m | | | | | | | | | ✓ | FRN | I-p | | | | | | | |
| M - 4.3.1 | 38 | Permanent/Temporary Ditches | ongoing | | | | | | | | | | | | ✓ | FRN | I-m | | | | | | | | | ✓ | FRN | I-p | | | | | | | |
| M - 4.3.1 | 39 | Drainage Protection | ongoing | | | | | | | | | | | | | | | | | | | | | | | | | | | | | | | | |
| M - 4.3.1 | 40 | SWRCB Permit Coverage | ongoing | | | | | | | | | | | | ✓ | FRN | I-m | | | | | | | | | ✓ | FRN | I-p | | | | | | | |
| M - 4.3.1 | 41 | Surface Water Collection System | ongoing | | | | | | | | | | | | | | | | | | | | | | | | | | | | | | | | |
| M - 4.3.1 | 42 | Surface Water Quality Monitoring | ongoing | | | | | | | | | | | | | | | | | | | | | | | | | | | | | | | | |
| M - 4.3.1 | 43 | Sediment Basin Maintenance | ongoing | | | | | | | | | | | | | | | | | | | | | | | | | | | | | | | | |
| M - 4.3.1 | 44 | Final Landfill Cover | ongoing | | | | | | | | | | | | ✓ | C | NONE | | | | | | | | | ✓ | C | NONE | | | | | | | |
| M - 4.3.1 | 45 | Erosion Control Plan | ongoing | | | | | | | | | | | | ✓ | FRN | I-m | | | | | | | | | ✓ | C | I-p | | | | | | | |
| M - 4.3.1 | 46 | Preventive Maintenance Program | ongoing | | | | | | | | | | | | ✓ | FRN | I-m | | | | | | | | | ✓ | C | I-p | | | | | | | |
| M - 4.3.2 | 49 | Interception of Groundwater Seepage | ongoing | | | | | | | | | | | | | | | | | | | | | | | | | | | | | | | | |
| M - 4.3.2 | 50 | LCRS/Leachate Monitoring | ongoing | | | | | | | | | | | | | | | | | | | | | | | | | | | | | | | | |
| M - 4.3.2 | 51 | LCRS Monitoring | ongoing | | | | | | | | | | | | | | | | | | | | | | | | | | | | | | | | |
| | | | | | | | | | | | | | | | | | | | | | | | | | | | | | | | | | | | |
| Biologist | | | | | | | | | | | | | | | | | | | | | | | | | | | | | | | | | | | |
| | | | | | | | | | | | | | | | | | | | | | | | | | | | | | | | | | | | |
| | | | | | | | | | | | | | | | | | | | | | | | | | | | | | | | | | | | |
| M - 4.1.1 | 6 | Slope Erosion Control | ongoing | ✓ | C | I-j | | ✓ | C | I-k | | ✓ | C | I-l | | ✓ | C | I-m | | ✓ | C | I-n | | ✓ | C | I-o | | ✓ | C | I-p | | ✓ | C | I-q | |
| M - 4.2.11 | 23 | Revegetation/Excavation | ongoing | ✓ | C | I-j | | ✓ | C | I-k | | ✓ | C | I-l | | ✓ | C | I-m | | ✓ | C | I-n | | ✓ | C | I-o | | ✓ | C | I-p | | ✓ | C | I-q | |

* C = Compliant, NC = Non-Compliant, FRN = Further Review Needed, R = Resolved

** See Appendix I for Comments

Checkmark = Condition or mitigation was monitored

/ = Yearly or non-ongoing monitoring frequency

Sunshine Canyon Landfill City Mitigation Monitoring Summary (10-01-2014 through 12-31-2014)

| Reference # | Mitigation # | City Mitigation Measures and Conditions Monitored by Discipline | Monitoring Frequency | Third Quarter | | | | | | | | | | | | | | Fourth Quarter | | | | | | | | | | | | | | | | | |
|-------------|--------------|---|----------------------|---------------|---------|----------------------------------|-----------|-----------|---------|----------------------------------|-----------|-----------|---------|----------------------------------|-----------|-----------|---------|----------------------------------|-----------|-----------|---------|----------------------------------|-----------|------------|---------|----------------------------------|-----------|------------|---------|----------------------------------|-----------|------------|---------|----------------------------------|-----------|
| | | | | 7/22/2014 | Status* | Further Review Needed/Comments** | Resolved* | 8/12/2014 | Status* | Further Review Needed/Comments** | Resolved* | 8/27/2014 | Status* | Further Review Needed/Comments** | Resolved* | 9/23/2014 | Status* | Further Review Needed/Comments** | Resolved* | 10/8/2014 | Status* | Further Review Needed/Comments** | Resolved* | 10/22/2014 | Status* | Further Review Needed/Comments** | Resolved* | 11/10/2014 | Status* | Further Review Needed/Comments** | Resolved* | 12/18/2014 | Status* | Further Review Needed/Comments** | Resolved* |
| | | | | | | | | | | | | | | | | | | | | | | | | | | | | | | | | | | | |
| M - 4.2.12 | | Temporary Vegetation Cover | ongoing | ✓ | C | I-j | | ✓ | C | I-k | | ✓ | C | I-l | | ✓ | C | I-m | | ✓ | C | I-n | | ✓ | C | I-o | | ✓ | C | I-p | | ✓ | C | I-q | |
| M - 4.4.1 | 60 | Coastal Sage Scrub Mitigation Plan | ongoing | | | | | ✓ | C | I-k | | | | | | | | | | | | | | | | | | | | ✓ | C | I-q | | | |
| M - 4.4.1 | 61 | Coastal Sage Scrub Seeding | ongoing | | | | | | | | | | | | | | | | | | | | | | | | | | | | | | | | |
| M - 4.4.1 | 62 | Mariposa Lily Mitigation Plan | ongoing | / | | | | / | | | | / | | | | / | | | | / | | | / | | | | / | | | | / | | | | |
| M - 4.4.1 | 63 | San Diego Horned Lizard Mitigation | ongoing | / | | | | / | | | | / | | | | / | | | | / | | | / | | | | / | | | | / | | | | |
| M - 4.4.1 | 64 | California Gnatcatcher Surveys | ongoing | / | | | | / | | | | / | | | | / | | | | / | | | / | | | | / | | | | / | | | | |
| M - 4.4.1 | 65 | Least Bell's Vireo Surveys | ongoing | / | | | | / | | | | / | | | | / | | | | / | | | / | | | | / | | | | / | | | | |
| M - 4.4.1 | 66 | Western Burrowing Owl Surveys | ongoing | / | | | | / | | | | / | | | | / | | | | / | | | / | | | | / | | | | / | | | | |
| M - 4.4.1 | 67 | Migratory Bird Treaty Act | ongoing | / | | | | / | | | | / | | | | / | | | | / | | | / | | | | / | | | | / | | | | |
| M - 4.4.1 | 68 | Raptor Nests Habitat | ongoing | / | | | | / | | | | / | | | | / | | | | / | | | / | | | | / | | | | / | | | | |
| M - 4.4.3 | 72 | Native Tree Mitigation | ongoing | ✓ | C | NONE | | ✓ | C | NONE | | ✓ | C | NONE | | ✓ | C | NONE | | ✓ | C | NONE | | ✓ | C | NONE | | ✓ | C | NONE | | ✓ | C | NONE | |
| M - 4.4.3 | 73 | Nonnative Tree Mitigation | status | ✓ | C | NONE | | ✓ | C | NONE | | ✓ | C | NONE | | ✓ | C | NONE | | ✓ | C | NONE | | ✓ | C | NONE | | ✓ | C | NONE | | ✓ | C | NONE | |
| M - 4.4.3 | 74 | Mitigation Tree Planting | ongoing | ✓ | C | NONE | | ✓ | C | NONE | | ✓ | C | NONE | | ✓ | C | NONE | | ✓ | C | NONE | | ✓ | C | NONE | | ✓ | C | NONE | | ✓ | C | NONE | |
| M - 4.4.3 | 75 | Tree Planting Mitigation Site Prep | ongoing | ✓ | C | NONE | | ✓ | C | NONE | | ✓ | C | NONE | | ✓ | C | NONE | | ✓ | C | NONE | | ✓ | C | NONE | | ✓ | C | NONE | | ✓ | C | NONE | |
| M - 4.4.3 | 76 | Poultry Wire Screen | ongoing | ✓ | C | NONE | | ✓ | C | NONE | | ✓ | C | NONE | | ✓ | C | NONE | | ✓ | C | NONE | | ✓ | C | NONE | | ✓ | C | NONE | | ✓ | C | NONE | |
| M - 4.4.3 | 77 | Backfill Material | ongoing | ✓ | C | NONE | | ✓ | C | NONE | | ✓ | C | NONE | | ✓ | C | NONE | | ✓ | C | NONE | | ✓ | C | NONE | | ✓ | C | NONE | | ✓ | C | NONE | |
| M - 4.4.3 | 78 | Tree Planting Procedure | ongoing | ✓ | C | NONE | | ✓ | C | NONE | | ✓ | C | NONE | | ✓ | C | NONE | | ✓ | C | NONE | | ✓ | C | NONE | | ✓ | C | NONE | | ✓ | C | NONE | |
| M - 4.4.3 | 79 | Tree Area Mulching | ongoing | ✓ | C | NONE | | ✓ | C | NONE | | ✓ | C | NONE | | ✓ | C | NONE | | ✓ | C | NONE | | ✓ | C | NONE | | ✓ | C | NONE | | ✓ | C | NONE | |
| M - 4.4.3 | 80 | Tree Irrigation/Fertilization | ongoing | ✓ | C | NONE | | ✓ | C | NONE | | ✓ | C | NONE | | ✓ | C | NONE | | ✓ | C | NONE | | ✓ | C | NONE | | ✓ | C | NONE | | ✓ | C | NONE | |
| M - 4.4.3 | 81 | Irrigation System | ongoing | | | | | | | | | | | | | | | | | | | | | | | | | | | | | | | | |
| M - 4.4.3 | 82 | Annual Tree Monitoring Report | annual | | | | | | | | | | | | | | | | | | | | | | | | | | | | | | | | |
| M - 4.9.2 | 96 | Vector Activity Monitoring | ongoing | | | | | | | | | | | | | | | | | | | | | | | | | | | | | | | | |
| M - 4.9.2 | 97 | Vector Elimination | ongoing | | | | | | | | | | | | | | | | | | | | | | | | | | | | | | | | |

* C = Compliant, NC = Non-Compliant, FRN = Further Review Needed, R = Resolved

** See Appendix I for Comments

Checkmark = Condition or mitigation was monitored

/ = Yearly or non-ongoing monitoring frequency

Sunshine Canyon Landfill City Mitigation Monitoring Summary (10-01-2014 through 12-31-2014)

| Reference # | Mitigation # | City Mitigation Measures and Conditions Monitored by Discipline | Monitoring Frequency | Third Quarter | | | | | | | | | | | | Fourth Quarter | | | | | | | | | | | | | | | | | | | |
|--------------------------------|--------------|---|----------------------|---------------|---------|----------------------------------|-----------|-----------|---------|----------------------------------|-----------|-----------|---------|----------------------------------|-----------|----------------|---------|----------------------------------|-----------|-----------|---------|----------------------------------|-----------|------------|---------|----------------------------------|-----------|------------|---------|----------------------------------|-----------|------------|---------|----------------------------------|-----------|
| | | | | 7/22/2014 | Status* | Further Review Needed/Comments** | Resolved* | 8/12/2014 | Status* | Further Review Needed/Comments** | Resolved* | 8/27/2014 | Status* | Further Review Needed/Comments** | Resolved* | 9/23/2014 | Status* | Further Review Needed/Comments** | Resolved* | 10/8/2014 | Status* | Further Review Needed/Comments** | Resolved* | 10/22/2014 | Status* | Further Review Needed/Comments** | Resolved* | 11/10/2014 | Status* | Further Review Needed/Comments** | Resolved* | 12/18/2014 | Status* | Further Review Needed/Comments** | Resolved* |
| | | | | | | | | | | | | | | | | | | | | | | | | | | | | | | | | | | | |
| M - 4.9.2 | 98 | Fly Control | ongoing | | | | | | | | | | | | | | | | | | | | | | | | | | | | | | | | |
| M - 4.9.2 | 99 | Rodent Control | ongoing | | | | | | | | | | | | | | | | | | | | | | | | | | | | | | | | |
| M - 4.9.2 | 100 | Operational Vector-Limiting Activity | ongoing | | | | | | | | | | | | | | | | | | | | | | | | | | | | | | | | |
| M - 4.9.2 | 101 | Equipment Cleanliness/Maintenance | ongoing | | | | | | | | | | | | | | | | | | | | | | | | | | | | | | | | |
| M - 4.9.2 | 102 | Storage of Vector-Attracting Items | ongoing | | | | | | | | | | | | | | | | | | | | | | | | | | | | | | | | |
| M - 4.9.2 | 103 | Salvaged Material Storage-Vector Control | ongoing | ✓ | C | NONE | | ✓ | C | NONE | | ✓ | C | NONE | | ✓ | C | NONE | | ✓ | C | NONE | | ✓ | C | NONE | | ✓ | C | NONE | | ✓ | C | NONE | |
| M - 4.9.2 | 104 | Periodic Vector Inspections | ongoing | | | | | | | | | | | | | | | | | | | | | | | | | | | | | | | | |
| M - 4.9.2 | 105 | Implementation of Vector Control Measures | ongoing | | | | | | | | | | | | | | | | | | | | | | | | | | | | | | | | |
| | | | | | | | | | | | | | | | | | | | | | | | | | | | | | | | | | | | |
| Air Quality & Noise Specialist | | | | | | | | | | | | | | | | | | | | | | | | | | | | | | | | | | | |
| | | | | | | | | | | | | | | | | | | | | | | | | | | | | | | | | | | | |
| | | | | | | | | | | | | | | | | | | | | | | | | | | | | | | | | | | | |
| M - 4.2.11 | 19 | Emissions Mitigation Measures | ongoing | ✓ | C | NONE | | ✓ | C | NONE | | ✓ | C | NONE | | ✓ | C | NONE | | ✓ | C | NONE | | ✓ | C | NONE | | ✓ | C | NONE | | ✓ | C | NONE | |
| M - 4.2.11 | 19 | Construction Curtailing due to Pollution | ongoing | / | NA | NONE | | / | NA | NONE | | / | NA | NONE | | / | NA | NONE | | / | NA | NONE | | ✓ | FRN | I-o | | / | NA | NONE | | / | NA | NONE | |
| M - 4.2.11 | 20 | Dust Lofting Minimization | ongoing | | | | | | | | | | | | | | | | | | | | | | | | | | | | | | | | |
| M - 4.2.11 | 21 | Wind Speed Monitoring | ongoing | ✓ | C | NONE | | ✓ | C | NONE | | ✓ | C | NONE | | ✓ | C | NONE | | ✓ | C | NONE | | ✓ | C | NONE | | ✓ | C | NONE | | ✓ | C | NONE | |
| M - 4.2.11 | 22 | Grading-Dust Reduction | ongoing | ✓ | C | NONE | | ✓ | C | NONE | | ✓ | C | NONE | | ✓ | C | NONE | | ✓ | C | NONE | | ✓ | C | NONE | | ✓ | C | NONE | | ✓ | C | NONE | |
| M - 4.2.12 | 24 | Construction Equipment Maintenance | ongoing | ✓ | C | NONE | | ✓ | C | NONE | | ✓ | C | NONE | | ✓ | C | NONE | | ✓ | C | NONE | | ✓ | C | NONE | | ✓ | C | NONE | | ✓ | C | NONE | |
| M - 4.2.12 | | Construction Curtailing due to Pollution | ongoing | | | | | | | | | | | | | | | | | | | | | | | | | | | | | | | | |
| M - 4.2.12 | 25 | Refuse Trucks-Maintenance | ongoing | | | | | | | | | | | | | | | | | | | | | | | | | | | | | | | | |
| M - 4.2.12 | | Refuse Trucks-Engine | ongoing | | | | | | | | | | | | | | | | | | | | | | | | | | | | | | | | |
| M - 4.2.12 | | Refuse Trucks-Fee Schedule | ongoing | | | | | | | | | | | | | | | | | | | | | | | | | | | | | | | | |
| M - 4.2.12 | | Refuse Trucks-Fee Schedule Delivery Time | ongoing | | | | | | | | | | | | | | | | | | | | | | | | | | | | | | | | |
| M - 4.2.12 | | Refuse Trucks-Idling | ongoing | | | | | | | | | | | | | | | | | | | | | | | | | | | | | | | | |

* C = Compliant, NC = Non-Compliant, FRN = Further Review Needed, R = Resolved

** See Appendix I for Comments

Checkmark = Condition or mitigation was monitored

/ = Yearly or non-ongoing monitoring frequency

Sunshine Canyon Landfill City Mitigation Monitoring Summary

(10-01-2014 through 12-31-2014)

| Reference # | Mitigation # | City Mitigation Measures and Conditions Monitored by Discipline | Monitoring Frequency | Third Quarter | | | | | | | | | | | | Fourth Quarter | | | | | | | | | | | | | | | | | | | |
|--|--------------|---|----------------------|---------------|---------|----------------------------------|-----------|-----------|---------|----------------------------------|-----------|-----------|---------|----------------------------------|-----------|----------------|---------|----------------------------------|-----------|-----------|---------|----------------------------------|-----------|------------|---------|----------------------------------|-----------|------------|---------|----------------------------------|-----------|------------|---------|----------------------------------|-----------|
| | | | | 7/22/2014 | Status* | Further Review Needed/Comments** | Resolved* | 8/12/2014 | Status* | Further Review Needed/Comments** | Resolved* | 8/27/2014 | Status* | Further Review Needed/Comments** | Resolved* | 9/23/2014 | Status* | Further Review Needed/Comments** | Resolved* | 10/8/2014 | Status* | Further Review Needed/Comments** | Resolved* | 10/22/2014 | Status* | Further Review Needed/Comments** | Resolved* | 11/10/2014 | Status* | Further Review Needed/Comments** | Resolved* | 12/18/2014 | Status* | Further Review Needed/Comments** | Resolved* |
| | | | | | | | | | | | | | | | | | | | | | | | | | | | | | | | | | | | |
| M - 4.2.12 | | Refuse Trucks-Emissions | ongoing | | | | | | | | | | | | | | | | | | | | | | | | | | | | | | | | |
| M - 4.2.12 | 26 | Truck Travel and Fugitive Dust Emissions | ongoing | | | | | | | | | | | | | | | | | | | | | | | | | | | | | | | | |
| M - 4.2.12 | | Truck Travel and Fugitive Dust Emissions | ongoing | | | | | | | | | | | | | | | | | | | | | | | | | | | | | | | | |
| M - 4.2.12 | | Truck Travel and Fugitive Dust Emissions | ongoing | | | | | | | | | | | | | | | | | | | | | | | | | | | | | | | | |
| M - 4.2.12 | | Truck Travel and Fugitive Dust Emissions | ongoing | | | | | | | | | | | | | | | | | | | | | | | | | | | | | | | | |
| M - 4.5.2 | 83 | Landfill Hours | info | / | | | | / | | | | / | | | | / | | | | / | | | / | | | | / | | | | | | | | |
| M - 4.5.2 | 84 | Landfill Equipment-Noise Reduction | ongoing | ✓ | C | NONE | | ✓ | C | NONE | | ✓ | C | NONE | | ✓ | C | NONE | | ✓ | C | NONE | | ✓ | C | NONE | | ✓ | C | NONE | | | | | |
| | | | | | | | | | | | | | | | | | | | | | | | | | | | | | | | | | | | |
| Hydrology, Hazardous Waste / Risk of Upset | | | | | | | | | | | | | | | | | | | | | | | | | | | | | | | | | | | |
| | | | | | | | | | | | | | | | | | | | | | | | | | | | | | | | | | | | |
| | | | | | | | | | | | | | | | | | | | | | | | | | | | | | | | | | | | |
| M - 4.3.2 | 53 | Groundwater Monitoring Wells | ongoing | | | | | | | | | | | | | | | | | | | | | | | | | | | | | | | | |
| M - 4.3.2 | 58 | Operation as Class III Landfill | ongoing | | | | | | | | | | | | | | | | | | | | | | | | | | | | | | | | |
| M - 4.3.2 | 59 | Underground Fuel Storage | ongoing | | | | | | | | | | | | | | | | | | | | | | | | | | | | | | | | |
| M - 4.9.1 | 90 | Refuse Inspection Program | ongoing | | | | | | | | | | | | | | | | | | | | | | | | | | | | | | | | |
| M - 4.9.1 | 91 | Hazardous Waste Load-Checking | status | | | | | | | | | | | | | | | | | | | | | | | | | | | | | | | | |
| M - 4.9.1 | 93 | Hazardous Waste Detection Training | status | | | | | | | | | | | | | | | | | | | | | | | | | | | | | | | | |
| M - 4.9.1 | 94 | Spill Response Program | status | | | | | | | | | | | | | | | | | | | | | | | | | | | | | | | | |
| M - 4.9.4 | 115 | Safety Inspections/Checklists | ongoing | | | | | | | | | | | | | | | | | | | | | | | | | | | | | | | | |
| M - 4.9.4 | 118 | Accident/Injury reports, Inspections | status | | | | | | | | | | | | | | | | | | | | | | | | | | | | | | | | |
| M - 4.9.4 | 121 | Fire Prevention Plan | ongoing | | | | | | | | | | | | | | | | | | | | | | | | | | | | | | | | |
| M - 4.9.4 | 123 | Personal Protective Equipment | ongoing | | | | | | | | | | | | | | | | | | | | | | | | | | | | | | | | |
| M - 4.9.4 | 125 | Site Access/Fencing | ongoing | | | | | | | | | | | | | | | | | ✓ | FRN | I-o | | | | | | | | | | | | | |
| M - 4.14.1 | 147 | Fire Response Capabilities | ongoing | | | | | | | | | | | | | | | | | | | | | | | | | | | | | | | | |

* C = Compliant, NC = Non-Compliant, FRN = Further Review Needed, R = Resolved

** See Appendix I for Comments

Checkmark = Condition or mitigation was monitored

/ = Yearly or non-ongoing monitoring frequency

Sunshine Canyon Landfill County Mitigation Monitoring Summary

(10-01-2014 through 12-31-2014)

| Reference # | Mitigation # | County Mitigation Measures and Conditions Monitored by Discipline | Monitoring Frequency | Third Quarter | | | | | | | | | | | | | | | | Fourth Quarter | | | | | | | | | | | | | | | |
|-----------------------------------|--------------|---|----------------------|---------------|---------|----------------------------------|-----------|-----------|---------|----------------------------------|-----------|-----------|---------|----------------------------------|-----------|-----------|---------|----------------------------------|-----------|----------------|---------|----------------------------------|-----------|------------|---------|----------------------------------|-----------|------------|---------|----------------------------------|-----------|------------|---------|----------------------------------|-----------|
| | | | | 7/22/2014 | Status* | Further Review Needed/Comments** | Resolved* | 8/12/2014 | Status* | Further Review Needed/Comments** | Resolved* | 8/27/2014 | Status* | Further Review Needed/Comments** | Resolved* | 9/23/2014 | Status* | Further Review Needed/Comments** | Resolved* | 10/8/2014 | Status* | Further Review Needed/Comments** | Resolved* | 10/22/2014 | Status* | Further Review Needed/Comments** | Resolved* | 11/10/2014 | Status* | Further Review Needed/Comments** | Resolved* | 12/18/2014 | Status* | Further Review Needed/Comments** | Resolved* |
| | | | | | | | | | | | | | | | | | | | | | | | | | | | | | | | | | | | |
| Project Manager | | | | | | | | | | | | | | | | | | | | | | | | | | | | | | | | | | | |
| | | | | | | | | | | | | | | | | | | | | | | | | | | | | | | | | | | | |
| | | | | | | | | | | | | | | | | | | | | | | | | | | | | | | | | | | | |
| Amendment 45.N 1 | 45N | Daily Cover Materials | ongoing | ✓ | C | NONE | | ✓ | C | NONE | | ✓ | C | NONE | | ✓ | C | NONE | | ✓ | C | NONE | | ✓ | C | NONE | | ✓ | C | NONE | | ✓ | C | NONE | |
| Amendment 45.N 3 | 45N | Daily Cover Procedure | ongoing | ✓ | C | NONE | | ✓ | C | NONE | | ✓ | C | NONE | | ✓ | C | NONE | | ✓ | C | NONE | | ✓ | C | NONE | | ✓ | C | NONE | | ✓ | C | NONE | |
| Amendment 45.N 4.a | 45N | Order for Abatement Status | ongoing | / | | I-j | | / | | I-k | | / | | I-l | | / | | I-m | | / | | I-n | | / | | I-o | | / | | I-p | | / | | I-q | |
| Amendment 45.N 4.c | 45N | Odor Patrol Program | ongoing | / | | I-j | | / | | I-k | | / | | I-l | | / | | I-m | | / | | I-n | | / | | I-o | | / | | I-p | | / | | I-q | |
| Amendment 45.N 4.d | 45N | Landfill Gas Mitigation Plan | ongoing | / | | I-j | | / | | I-k | | / | | I-l | | / | | I-m | | / | | I-n | | / | | I-o | | / | | I-p | | / | | I-q | |
| Amendment 45.N 5 | 45N | Dust and Odor Reports | ongoing | / | | I-j | | / | | I-k | | / | | I-l | | / | | I-m | | / | | I-n | | / | | I-o | | / | | I-p | | / | | I-q | |
| | | | | | | | | | | | | | | | | | | | | | | | | | | | | | | | | | | | |
| Combined Site & Bridge Area -20.A | 20.A | Joint Powers Authority | info | / | | | | / | | | | / | | | | / | | | | / | | | | / | | | | / | | | | | | | |
| Combined Site & Bridge Area -20.F | 20.F | Mitigation Reporting and Monitoring Program | status | / | | | | / | | | | / | | | | / | | | | / | | | | / | | | | / | | | | | | | |
| Landfill Capacity - 27 | 27 | Tipping Fees for Partial Loads/Peak Hours | status | | | | | | | | | | | | | | | | | | | | | | | | | | | | | | | | |
| Grading & Drainage-41.A -.D | 41A-D | Water Conservation | status | ✓ | C | NONE | | ✓ | C | NONE | | ✓ | C | NONE | | ✓ | C | NONE | | ✓ | C | NONE | | ✓ | C | NONE | | ✓ | C | NONE | | ✓ | C | NONE | |
| Revegetation - 44.F | 44.F | Revegetation | status | ✓ | C | I-j | | ✓ | C | I-k | | ✓ | C | I-l | | ✓ | C | I-m | | ✓ | C | I-n | | ✓ | C | I-o | | ✓ | C | I-p | | ✓ | C | I-q | |
| Fugitive Dust - 45.B | 45.B | Working Face Areas | ongoing | ✓ | C | NONE | | ✓ | C | NONE | | ✓ | C | NONE | | ✓ | C | NONE | | ✓ | C | NONE | | ✓ | C | NONE | | ✓ | C | NONE | | ✓ | C | NONE | |
| Fugitive Dust - 45.F | 45.F | Inactive Areas Monitoring | ongoing | ✓ | C | NONE | | ✓ | C | NONE | | ✓ | C | NONE | | ✓ | C | NONE | | ✓ | C | NONE | | ✓ | C | NONE | | ✓ | C | NONE | | ✓ | C | NONE | |
| Fugitive Dust - 45.I | 45.I | Cleaning of Roads | ongoing | ✓ | C | NONE | | ✓ | C | NONE | | ✓ | C | NONE | | ✓ | C | NONE | | ✓ | C | NONE | | ✓ | C | NONE | | ✓ | C | NONE | | ✓ | C | NONE | |
| Litter Control - 46.A -.D | 46A-D | Litter Control Program | ongoing | ✓ | C | NONE | | ✓ | C | NONE | | ✓ | C | NONE | | ✓ | C | NONE | | ✓ | C | NONE | | ✓ | C | NONE | | ✓ | C | NONE | | ✓ | C | NONE | |
| Gas - 52 | 52 | Landfill Gas Collection System | ongoing | | | | | | | | | ✓ | C | I-l | | ✓ | C | I-m | | | | | | | | ✓ | C | I-p | | ✓ | C | I-q | | | |
| Traffic - 57 | 57 | Traffic Improvements | status | ✓ | C | NONE | | ✓ | C | NONE | | ✓ | C | NONE | | ✓ | C | NONE | | ✓ | C | NONE | | ✓ | C | NONE | | ✓ | C | NONE | | ✓ | C | NONE | |
| Traffic - 60 | 60 | Street Light Installation | status | ✓ | C | NONE | | ✓ | C | NONE | | ✓ | C | NONE | | ✓ | C | NONE | | ✓ | C | NONE | | ✓ | C | NONE | | ✓ | C | NONE | | ✓ | C | NONE | |

* C = Compliant, NC = Non-Compliant, FRN = Further Review Needed, R = Resolved

** See Appendix I for Comments

Checkmark = Condition or mitigation was monitored

/ = Yearly or non-ongoing monitoring frequency

Sunshine Canyon Landfill County Mitigation Monitoring Summary

(10-01-2014 through 12-31-2014)

| Reference # | Mitigation # | County Mitigation Measures and Conditions Monitored by Discipline | Monitoring Frequency | Third Quarter | | | | | | | | | | | | | | | | Fourth Quarter | | | | | | | | | | | | | | | |
|----------------------------------|--------------|---|----------------------|---------------|---------|----------------------------------|-----------|-----------|---------|----------------------------------|-----------|-----------|---------|----------------------------------|-----------|-----------|---------|----------------------------------|-----------|----------------|---------|----------------------------------|-----------|------------|---------|----------------------------------|-----------|------------|---------|----------------------------------|-----------|------------|---------|----------------------------------|-----------|
| | | | | 7/22/2014 | Status* | Further Review Needed/Comments** | Resolved* | 8/12/2014 | Status* | Further Review Needed/Comments** | Resolved* | 8/27/2014 | Status* | Further Review Needed/Comments** | Resolved* | 9/23/2014 | Status* | Further Review Needed/Comments** | Resolved* | 10/8/2014 | Status* | Further Review Needed/Comments** | Resolved* | 10/22/2014 | Status* | Further Review Needed/Comments** | Resolved* | 11/10/2014 | Status* | Further Review Needed/Comments** | Resolved* | 12/18/2014 | Status* | Further Review Needed/Comments** | Resolved* |
| | | | | | | | | | | | | | | | | | | | | | | | | | | | | | | | | | | | |
| Traffic - 61 | 61 | Traffic Minimization | ongoing | ✓ | C | NONE | | ✓ | C | NONE | | ✓ | C | NONE | | ✓ | C | NONE | | ✓ | C | NONE | | ✓ | C | NONE | | ✓ | C | NONE | | ✓ | C | NONE | |
| Permittee Fees - 64 - 72 | 64-72 | Permittee Fees | info | / | | | | / | | | | / | | | | / | | | | / | | | | / | | | | / | | | | / | | | |
| Permittee Fees - 69 | 69 | Permittee Fees-Contributions | info | / | | | | / | | | | / | | | | / | | | | / | | | | / | | | | / | | | | / | | | |
| Permittee Fees - 70 | 70 | Permittee Fees | info | / | | | | / | | | | / | | | | / | | | | / | | | | / | | | | / | | | | / | | | |
| Permittee Fees - 72 | 72 | Permittee Fees | info | / | | | | / | | | | / | | | | / | | | | / | | | | / | | | | / | | | | / | | | |
| Alternative Fuel Vehicles - 77.A | 77.A | Alternative Fuel Vehicles-Light Duty | status | ✓ | C | NONE | | ✓ | C | NONE | | ✓ | C | NONE | | ✓ | C | NONE | | ✓ | C | NONE | | ✓ | C | NONE | | ✓ | C | NONE | | ✓ | C | NONE | |
| Alternative Fuel Vehicles - 77.B | 77.B | Alternative Fuel Vehicles-Refuse/Collection Trucks | status | ✓ | C | NONE | | ✓ | C | NONE | | ✓ | C | NONE | | ✓ | C | NONE | | ✓ | C | NONE | | ✓ | C | NONE | | ✓ | C | NONE | | ✓ | C | NONE | |
| Alternative Fuel Vehicles - 77.C | 77.C | Alternative Fuel Vehicles-Report | status | | | | | | | | | | | | | | | | | | | | | | | | | | | | | | | | |
| Alternative Fuel Vehicles - 77.D | 77.D | Alternative Fuel Vehicles-heavy-duty, alternative fuel off- | status | | | | | | | | | | | | | ✓ | C | I-m | | | | | | | | | | | | | | | | | |
| Alternative Fuel Vehicles - 77.E | 77.E | Alternative Fuel Vehicles-Non-diesel Requirements | status | | | | | | | | | | | | | ✓ | C | I-m | | | | | | | | | | | | | | | | | |
| Alternative Fuel Vehicles - 77.F | 77.F | Alternative Fuel Vehicles-Non-diesel Truck Trip | status | | | | | | | | | | | | | | | | | | | | | | | | | | | | | | | | |
| Alternative Fuel Vehicles - 77.G | 77.G | Alternative Fuel Vehicles-Clean Fuel Demo Program | status | | | | | | | | | | | | | | | | | | | | | | | | | | | | | | | | |
| Alternative Fuel Vehicles - 77.H | 77.H | Alternative Fuel Vehicles-Compliance Evaluation | status | | | | | | | | | | | | | | | | | | | | | | | | | | | | | | | | |
| Air Quality Monitoring - 81 | 81 | Air Quality Monitoring-Testing | ongoing | / | | | | / | | | | / | | | | / | | | | / | | | | / | | | | / | | | | / | | | |
| | | Air Quality Monitoring-Testing | | | | | | | | | | | | | | | | | | | | | | | | | | | | | | | | | |
| IMP - Part I..A | IMP 1 | Air Quality Monitoring-Testing | ongoing | / | | | | / | | | | / | | | | / | | | | / | | | | / | | | | / | | | | / | | | |
| | | Air Quality Monitoring-Testing | | | | | | | | | | | | | | | | | | | | | | | | | | | | | | | | | |
| IMP - Part VI | IMP 6 | Air Quality Monitoring-Testing | ongoing | / | | | | / | | | | / | | | | / | | | | / | | | | / | | | | / | | | | / | | | |
| | | | | | | | | | | | | | | | | | | | | | | | | | | | | | | | | | | | |
| | | | | | | | | | | | | | | | | | | | | | | | | | | | | | | | | | | | |
| MMRS-12/01/06 | | Mitigation Monitoring and Reporting Summary | info | / | | | | / | | | | / | | | | / | | | | / | | | | / | | | | / | | | | / | | | |
| | | Permits | | | | | | | | | | | | | | | | | | | | | | | | | | | | | | | | | |

* C = Compliant, NC = Non-Compliant, FRN = Further Review Needed, R = Resolved

** See Appendix I for Comments

Checkmark = Condition or mitigation was monitored

/ = Yearly or non-ongoing monitoring frequency

Sunshine Canyon Landfill County Mitigation Monitoring Summary

(10-01-2014 through 12-31-2014)

| Reference # | Mitigation # | County Mitigation Measures and Conditions Monitored by Discipline | Monitoring Frequency | Third Quarter | | | | | | | | | | | | | | | | Fourth Quarter | | | | | | | | | | | | | | | |
|----------------------|--------------|---|----------------------|---------------|---------|----------------------------------|-----------|-----------|---------|----------------------------------|-----------|-----------|---------|----------------------------------|-----------|-----------|---------|----------------------------------|-----------|----------------|---------|----------------------------------|-----------|------------|---------|----------------------------------|-----------|------------|---------|----------------------------------|-----------|------------|---------|----------------------------------|-----------|
| | | | | 7/22/2014 | Status* | Further Review Needed/Comments** | Resolved* | 8/12/2014 | Status* | Further Review Needed/Comments** | Resolved* | 8/27/2014 | Status* | Further Review Needed/Comments** | Resolved* | 9/23/2014 | Status* | Further Review Needed/Comments** | Resolved* | 10/8/2014 | Status* | Further Review Needed/Comments** | Resolved* | 10/22/2014 | Status* | Further Review Needed/Comments** | Resolved* | 11/10/2014 | Status* | Further Review Needed/Comments** | Resolved* | 12/18/2014 | Status* | Further Review Needed/Comments** | Resolved* |
| | | | | | | | | | | | | | | | | | | | | | | | | | | | | | | | | | | | |
| Geology - 1.15 | | Permittee's On-site Solid Waste Recovery and | status | / | | | | / | | | | / | | | | / | | | | / | | | | / | | | | / | | | | / | | | |
| Surface Water - 2.09 | | SWRCB Permit Coverage | ongoing | / | | | | / | | | | / | | | | / | | | | / | | | | / | | | | / | | | | / | | | |
| Surface Water - 2.15 | | Surface Water Preventive Maintenance Program | ongoing | | | | | | | | | | | | ✓ | FRN | I-m | | | | | | | | | ✓ | FRN | I-p | | | | | | | |
| Groundwater - 3.13 | | Groundwater-LFG Migration Mitigation | ongoing | | | | | | | | | | | | | | | | | | | | | | | | | | | | | | | | |
| Groundwater - 3.14 | | Groundwater-Monitoring Wells | ongoing | | | | | | | | | | | | | | | | | | | | | | | | | | | | | | | | |
| BIOTA – 4.05 | | Annual Fee Submission for SEA Studies | status | / | | | | / | | | | / | | | | / | | | | / | | | | / | | | | / | | | | / | | | |
| BIOTA – 4.06 | | Buffer Zone Maintenance as Nature Preserve | ongoing | ✓ | C | NONE | | ✓ | C | NONE | | ✓ | C | NONE | | ✓ | C | NONE | | ✓ | C | NONE | | ✓ | C | NONE | | ✓ | C | NONE | | ✓ | C | NONE | |
| BIOTA – 4.07 | | Buffer Zone Maintenance-Vegetation | ongoing | ✓ | C | NONE | | ✓ | C | NONE | | ✓ | C | NONE | | ✓ | C | NONE | | ✓ | C | NONE | | ✓ | C | NONE | | ✓ | C | NONE | | ✓ | C | NONE | |
| BIOTA – 4.08 | | Ridgeline Maintenance-Remain Undisturbed | ongoing | ✓ | C | NONE | | ✓ | C | NONE | | ✓ | C | NONE | | ✓ | C | NONE | | ✓ | C | NONE | | ✓ | C | NONE | | ✓ | C | NONE | | ✓ | C | NONE | |
| BIOTA – 4.47 | | Cleaning of Equipment | ongoing | | | | | | | | | | | | | | | | | | | | | | | | | | | | | | | | |
| BIOTA – 4.48 | | Monitoring of Vector-Attracting Items | ongoing | | | | | | | | | | | | | | | | | | | | | | | | | | | | | | | | |
| BIOTA – 4.49 | | Salvaged Material Storage-Vector Control | ongoing | | | | | | | | | | | | | | | | | | | | | | | | | | | | | | | | |
| BIOTA – 4.50 | | Vector Activity Monitoring | ongoing | | | | | | | | | | | | | | | | | | | | | | | | | | | | | | | | |
| Air Quality - 6.03 | | Dust Emission Minimization | ongoing | | | | | | | | | | | | | | | | | | | | | | | | | | | | | | | | |
| Air Quality - 6.04 | | Usage of Cut Material for Cover | ongoing | ✓ | C | NONE | | ✓ | C | NONE | | ✓ | C | NONE | | ✓ | C | NONE | | ✓ | C | NONE | | ✓ | C | NONE | | ✓ | C | NONE | | ✓ | C | NONE | |
| Air Quality - 6.05 | | Operations in Accordance with SCAQMD/DOPW | info | / | | | | / | | | | / | | | | / | | | | / | | | | / | | | | / | | | | / | | | |
| Air Quality - 6.06 | | Landfill Gas Control/Extraction System/Monitoring | ongoing | / | | | | / | | | | / | | | | / | | | | / | | | | / | | | | / | | | | / | | | |
| Air Quality - 6.07 | | Flaring Systems | info | / | | | | / | | | | / | | | | / | | | | / | | | | / | | | | / | | | | / | | | |
| Air Quality - 6.08 | | Management of Truck Arrivals | ongoing | | | | | | | | | | | | | | | | | | | | | | | | | | | | | | | | |
| Air Quality - 6.10 | | Refuse Truck Mitigation | status | | | | | | | | | | | | | | | | | | | | | | | | | | | | | | | | |
| Air Quality - 6.11 | | Light Duty Alternative Fuel Vehicles | status | ✓ | C | NONE | | ✓ | C | NONE | | ✓ | C | NONE | | ✓ | C | NONE | | ✓ | C | NONE | | ✓ | C | NONE | | ✓ | C | NONE | | ✓ | C | NONE | |

* C = Compliant, NC = Non-Compliant, FRN = Further Review Needed, R = Resolved

** See Appendix I for Comments

Checkmark = Condition or mitigation was monitored

/ = Yearly or non-ongoing monitoring frequency

Sunshine Canyon Landfill County Mitigation Monitoring Summary

(10-01-2014 through 12-31-2014)

| Reference # | Mitigation # | County Mitigation Measures and Conditions Monitored by Discipline | Monitoring Frequency | Third Quarter | | | | | | | | | | | | | | | | Fourth Quarter | | | | | | | | | | | | | | | |
|----------------------------|--------------|---|----------------------|---------------|---------|----------------------------------|-----------|-----------|---------|----------------------------------|-----------|-----------|---------|----------------------------------|-----------|-----------|---------|----------------------------------|-----------|----------------|---------|----------------------------------|-----------|------------|---------|----------------------------------|-----------|------------|---------|----------------------------------|-----------|------------|---------|----------------------------------|-----------|
| | | | | 7/22/2014 | Status* | Further Review Needed/Comments** | Resolved* | 8/12/2014 | Status* | Further Review Needed/Comments** | Resolved* | 8/27/2014 | Status* | Further Review Needed/Comments** | Resolved* | 9/23/2014 | Status* | Further Review Needed/Comments** | Resolved* | 10/8/2014 | Status* | Further Review Needed/Comments** | Resolved* | 10/22/2014 | Status* | Further Review Needed/Comments** | Resolved* | 11/10/2014 | Status* | Further Review Needed/Comments** | Resolved* | 12/18/2014 | Status* | Further Review Needed/Comments** | Resolved* |
| | | | | | | | | | | | | | | | | | | | | | | | | | | | | | | | | | | | |
| Air Quality - 6.11 | | Alternative Fuel Refuse Collection/Transfer Trucks | status | | | | | | | | | | | | | | | | | | | | | | | | | | | | | | | | |
| Air Quality - 6.11 | | Alternative Fuel Vehicle Report Submission | status | | | | | | | | | | | | | | | | | | | | | | | | | | | | | | | | |
| Air Quality - 6.11 | | Heavy-duty, Alternative Fuel Off-Road Equipment Pilot | status | | | | | | | | | | | | | | | | | | | | | | | | | | | | | | | | |
| Air Quality - 6.11 | | Non-Diesel, Alternative Fuel Vehicles-Transfer/Collection | status | | | | | | | | | | | | | | | | | | | | | | | | | | | | | | | | |
| Air Quality - 6.11 | | Non-Diesel, Alternative Fuel VehiclesTruck Trips | status | | | | | | | | | | | | | | | | | | | | | | | | | | | | | | | | |
| Air Quality - 6.11 | | Clean Fuel Demonstration Program | status | | | | | | | | | | | | | | | | | | | | | | | | | | | | | | | | |
| Air Quality - 6.11 | | Compliance Evaluation | status | | | | | | | | | | | | | | | | | | | | | | | | | | | | | | | | |
| Odor/Landfill Gas – 7.01 | | Landfill Gas Escape Prevention | ongoing | ✓ | C | NONE | | ✓ | C | NONE | | ✓ | C | NONE | | ✓ | C | NONE | | ✓ | C | NONE | | ✓ | C | NONE | | ✓ | C | NONE | | ✓ | C | NONE | |
| Odor/Landfill Gas – 7.02 | | Landfill Gas Collection System | ongoing | ✓ | C | NONE | | ✓ | C | NONE | | ✓ | C | NONE | | ✓ | C | NONE | | ✓ | C | NONE | | ✓ | C | NONE | | ✓ | C | NONE | | ✓ | C | NONE | |
| Odor/Landfill Gas – 7.04 | | Gas Collection/Flare System Risk Mitigation | ongoing | | | | | | | | | | | | | | | | | | | | | | | | | | | | | | | | |
| Odor/Landfill Gas – 7.05 | | Wellhead Awareness | status | ✓ | C | NONE | | ✓ | C | NONE | | ✓ | C | NONE | | ✓ | C | NONE | | ✓ | C | NONE | | ✓ | C | NONE | | ✓ | C | NONE | | ✓ | C | NONE | |
| Odor/Landfill Gas – 7.06 | | Odor Control Measures | ongoing | | | | | | | | | ✓ | FRN | I-1 | | | | | ✓ | FRN | I-n | | ✓ | FRN | I-o | | ✓ | C | I-p | | ✓ | C | I-q | | |
| Odor/Landfill Gas – 7.07 | | Gas Recovery and Sale | status | | | | | | | | | ✓ | C | I-1 | | ✓ | C | I-m | | | | | | | | ✓ | C | I-p | | ✓ | C | I-q | | | |
| Traffic/Circulation – 8.03 | | Street Light Installation | status | ✓ | C | NONE | | ✓ | C | NONE | | ✓ | C | NONE | | ✓ | C | NONE | | ✓ | C | NONE | | ✓ | C | NONE | | ✓ | C | NONE | | ✓ | C | NONE | |
| Traffic/Circulation – 8.04 | | Truck Traffic Minimization | status | | | | | | | | | | | | | | | | | | | | | | | | | | | | | | | | |
| Traffic/Circulation – 8.08 | | Tipping Fees for Partial Loads/Peak Hours | status | | | | | | | | | | | | | | | | | | | | | | | | | | | | | | | | |
| Traffic/Circulation – 8.10 | | Nighttime Landfill Operations Feasibility | status | / | | | | / | | | | / | | | | / | | | | / | | | | / | | | | / | | | | / | | | |
| Traffic/Circulation – 8.11 | | Parking Management along San Fernando Road | status | / | | | | / | | | | / | | | | / | | | | / | | | | / | | | | / | | | | / | | | |
| Traffic/Circulation – 8.13 | | Adequate Queuing | status | | | | | | | | | | | | | | | | | | | | | | | | | | | | | | | | |
| Visual – 10.03 | | Landfill Flare Locations | status | / | | | | / | | | | / | | | | / | | | | / | | | | / | | | | / | | | | / | | | |
| Visual – 10.04 | | Confinement of Excavation Cover Material | status | | | | | | | | | | | | | | | | | | | | | | | | | | | | | | | | |

* C = Compliant, NC = Non-Compliant, FRN = Further Review Needed, R = Resolved

** See Appendix I for Comments

Checkmark = Condition or mitigation was monitored

/ = Yearly or non-ongoing monitoring frequency

Sunshine Canyon Landfill County Mitigation Monitoring Summary

(10-01-2014 through 12-31-2014)

| Reference # | Mitigation # | County Mitigation Measures and Conditions Monitored by Discipline | Monitoring Frequency | Third Quarter | | | | | | | | | | | | | | | | Fourth Quarter | | | | | | | | | | | | | | | |
|-------------------------------|--------------|---|----------------------|---------------|---------|----------------------------------|-----------|-----------|---------|----------------------------------|-----------|-----------|---------|----------------------------------|-----------|-----------|---------|----------------------------------|-----------|----------------|---------|----------------------------------|-----------|------------|---------|----------------------------------|-----------|------------|---------|----------------------------------|-----------|------------|---------|----------------------------------|-----------|
| | | | | 7/22/2014 | Status* | Further Review Needed/Comments** | Resolved* | 8/12/2014 | Status* | Further Review Needed/Comments** | Resolved* | 8/27/2014 | Status* | Further Review Needed/Comments** | Resolved* | 9/23/2014 | Status* | Further Review Needed/Comments** | Resolved* | 10/6/2014 | Status* | Further Review Needed/Comments** | Resolved* | 10/22/2014 | Status* | Further Review Needed/Comments** | Resolved* | 11/10/2014 | Status* | Further Review Needed/Comments** | Resolved* | 12/18/2014 | Status* | Further Review Needed/Comments** | Resolved* |
| | | | | | | | | | | | | | | | | | | | | | | | | | | | | | | | | | | | |
| Visual – 10.05 | | Lighting Requirements | status | | | | | | | | | | | | | | | | | | | | | | | | | | | | | | | | |
| Visual – 10.11 | | Litter Control Program | ongoing | | | | | | | | | | | | | | | | | | | | | | | | | | | | | | | | |
| Visual – 10.11 | | Solid Waste Load Procedures-Improperly Covered/Contained | ongoing | | | | | | | | | | | | | | | | | | | | | | | | | | | | | | | | |
| Visual – 10.11 | | Debris Removal at Entrance | ongoing | | | | | | | | | ✓ | FRN | I-I | | ✓ | FRN | I-m | | | | | ✓ | FRN | I-o | | ✓ | FRN | I-p | | ✓ | FRN | I-q | | |
| Visual – 10.11 | | Litter Control-Fencing | ongoing | | | | | | | | | | | | | | | | | | | | | | | | | | | | | | | | |
| Visual – 10.11 | | Periodic Litter Pickup | ongoing | | | | | | | | | ✓ | FRN | I-I | | ✓ | FRN | I-m | | | | | ✓ | FRN | I-o | | ✓ | FRN | I-p | | ✓ | FRN | I-q | | |
| Visual – 10.11 | | Litter Control-Additional Measures | ongoing | | | | | | | | | | | | | | | | | | | | | | | | | | | | | | | | |
| Visual – 10.12 | | Discharge Control/Litter Recovery | status | | | | | | | | | | | | | | | | | | | | | | | | | | | | | | | | |
| Water Conserv. - 11.01 | | Water Conservation | ongoing | ✓ | C | NONE | | ✓ | C | NONE | | ✓ | C | NONE | | ✓ | C | NONE | | ✓ | C | NONE | | ✓ | C | NONE | | ✓ | C | NONE | | ✓ | C | NONE | |
| Recycling - 14.01 | | On-site Waste Diversion/Recycling | ongoing | ✓ | C | NONE | | ✓ | C | NONE | | ✓ | C | NONE | | ✓ | C | NONE | | ✓ | C | NONE | | ✓ | C | NONE | | ✓ | C | NONE | | ✓ | C | NONE | |
| Recycling - 14.03 | | Tonnage Disposal Determination | info | / | | | | / | | | | / | | | | / | | | | / | | | | / | | | | / | | | | | | | |
| Recycling - 14.04 | | Recycling-Various Tasks | info | / | | | | / | | | | / | | | | / | | | | / | | | | / | | | | / | | | | | | | |
| | | Clean Dirt Procedures | | | | | | | | | | | | | | | | | | | | | | | | | | | | | | | | | |
| Site - 15.11 | | Reclaimed Water Utilization | status | / | | | | / | | | | / | | | | / | | | | / | | | | / | | | | / | | | | | | | |
| Site - 15.12 | | Water Conservation Measures | ongoing | ✓ | C | NONE | | ✓ | C | NONE | | ✓ | C | NONE | | ✓ | C | NONE | | ✓ | C | NONE | | ✓ | C | NONE | | ✓ | C | NONE | | ✓ | C | NONE | |
| Admin Rpts/Pgms - 17.4 | | Operation Compliance | info | / | | | | / | | | | / | | | | / | | | | / | | | | / | | | | / | | | | | | | |
| Admin Rpts/Pgms -17.10 | | Fill Sequencing Plans | status | | | | | | | | | | | | | | | | | | | | | | | | | | | | | | | | |
| Admin Rpts/Pgms- 17.15 | | Quarterly Newsletter | status | | | | | | | | | | | | | | | | | | | | | | | | | | | | | | | | |
| Landfill Operation - 18.7 | | Graffiti Removal/Deterrent Plan | ongoing | ✓ | C | NONE | | ✓ | C | NONE | | ✓ | C | NONE | | ✓ | C | NONE | | ✓ | C | NONE | | ✓ | C | NONE | | ✓ | C | NONE | | ✓ | C | NONE | |
| | | | | | | | | | | | | | | | | | | | | | | | | | | | | | | | | | | | |
| Civil & Geotechnical Engineer | | | | | | | | | | | | | | | | | | | | | | | | | | | | | | | | | | | |
| | | | | | | | | | | | | | | | | | | | | | | | | | | | | | | | | | | | |

* C = Compliant, NC = Non-Compliant, FRN = Further Review Needed, R = Resolved

** See Appendix I for Comments

Checkmark = Condition or mitigation was monitored

/ = Yearly or non-ongoing monitoring frequency

Sunshine Canyon Landfill County Mitigation Monitoring Summary

(10-01-2014 through 12-31-2014)

| Reference # | Mitigation # | County Mitigation Measures and Conditions Monitored by Discipline | Monitoring Frequency | Third Quarter | | | | | | | | | | | | | | | | Fourth Quarter | | | | | | | | | | | | | | | |
|----------------------|--------------|---|----------------------|---------------|---------|----------------------------------|-----------|-----------|---------|----------------------------------|-----------|-----------|---------|----------------------------------|-----------|-----------|---------|----------------------------------|-----------|----------------|---------|----------------------------------|-----------|------------|---------|----------------------------------|-----------|------------|---------|----------------------------------|-----------|------------|---------|----------------------------------|-----------|
| | | | | 7/22/2014 | Status* | Further Review Needed/Comments** | Resolved* | 8/12/2014 | Status* | Further Review Needed/Comments** | Resolved* | 8/27/2014 | Status* | Further Review Needed/Comments** | Resolved* | 9/23/2014 | Status* | Further Review Needed/Comments** | Resolved* | 10/8/2014 | Status* | Further Review Needed/Comments** | Resolved* | 10/22/2014 | Status* | Further Review Needed/Comments** | Resolved* | 11/10/2014 | Status* | Further Review Needed/Comments** | Resolved* | 12/18/2014 | Status* | Further Review Needed/Comments** | Resolved* |
| | | | | | | | | | | | | | | | | | | | | | | | | | | | | | | | | | | | |
| | | | | | | | | | | | | | | | | | | | | | | | | | | | | | | | | | | | |
| Revegetation - 44.C | 44.C | Cut Slope Requirements | ongoing | ✓ | C | NONE | | ✓ | C | NONE | | ✓ | C | NONE | | ✓ | C | NONE | | ✓ | C | NONE | | ✓ | C | NONE | | ✓ | C | NONE | | ✓ | C | NONE | |
| | | | | | | | | | | | | | | | | | | | | | | | | | | | | | | | | | | | |
| Geology - 1.01 | | Survey Monument Locations | ongoing | | | | | | | | | | | | | | | | | | | | | | | | | | | | | | | | |
| Geology - 1.02 | | Seismic Design | ongoing | | | | | | | | | | | | ✓ | FRN | I-m | | | | | | | | | | | | | | | | | | |
| Geology - 1.03 | | Maximum Refuse Slope Gradients | ongoing | | | | | | | | | | | | | | | | | | | | | | | | | | | | | | | | |
| Geology - 1.04 | | Maximum Refuse Slope Gradients | ongoing | | | | | | | | | | | | | | | | | | | | | | | | | | | | | | | | |
| Geology - 1.05 | | Unsuitable Material Procedures | ongoing | | | | | | | | | | | | | | | | | | | | | | | | | | | | | | | | |
| Geology - 1.06 | | Grading Activities Procedures | ongoing | | | | | | | | | | | | | | | | | | | | | | | | | | | | | | | | |
| Geology - 1.07 | | Grading Activities Procedures | ongoing | | | | | | | | | | | | ✓ | FRN | I-m | | | | | | | | | | | | | | | | | | |
| Geology - 1.09 | | Outer Perimeter Ridgeline Requirements | info | | | | | | | | | | | | | | | | | | | | | | | | | | | | | | | | |
| Geology - 1.12 | | Soil Stabilization | ongoing | | | | | | | | | | | | | | | | | | | | | | | | | | | | | | | | |
| Geology - 1.16 | | Checklists/Surveys Following Earthquake | upon event | | | | | | | | | | | | | | | | | | | ✓ | FRN | I-o | | | | | | | | | | | |
| Geology - 1.18 | | Alluvium-Removal/Replacement | ongoing | | | | | | | | | | | | | | | | | | | | | | | | | | | | | | | | |
| Geology - 1.19 | | Landfill Design/Construction | ongoing | | | | | | | | | | | | | | | | | | | | | | | | | | | | | | | | |
| Geology - 1.20 | | Landfill Design/Construction-Foundations | ongoing | | | | | | | | | | | | | | | | | | | | | | | | | | | | | | | | |
| Surface Water - 2.03 | | Surface Drainage Control Facilities | ongoing | | | | | | | | | | | | | | | | | | | | | | | | | | | | | | | | |
| Surface Water - 2.05 | | Underdrain Requirements | ongoing | | | | | | | | | | | | | | | | | | | | | | | | | | | | | | | | |
| Surface Water - 2.06 | | Final Cover for Surface Water Runoff Control | ongoing | | | | | | | | | | | | | | | | | | | | | | | | | | | | | | | | |
| Groundwater - 3.02 | | Liner System Requirements | ongoing | | | | | | | | | | | | | | | | | | | | | | | | | | | | | | | | |
| Groundwater - 3.04 | | Onsite Inspector for Liner Installation | ongoing | | | | | | | | | | | | | | | | | | | | | | | | | | | | | | | | |

* C = Compliant, NC = Non-Compliant, FRN = Further Review Needed, R = Resolved

** See Appendix I for Comments

Checkmark = Condition or mitigation was monitored

/ = Yearly or non-ongoing monitoring frequency

Sunshine Canyon Landfill County Mitigation Monitoring Summary

(10-01-2014 through 12-31-2014)

| Reference # | Mitigation # | County Mitigation Measures and Conditions Monitored by Discipline | Monitoring Frequency | Third Quarter | | | | | | | | | | | | | | | | Fourth Quarter | | | | | | | | | | | | | | | |
|-------------------------|--------------|---|----------------------|---------------|---------|----------------------------------|-----------|-----------|---------|----------------------------------|-----------|-----------|---------|----------------------------------|-----------|-----------|---------|----------------------------------|-----------|----------------|---------|----------------------------------|-----------|------------|---------|----------------------------------|-----------|------------|---------|----------------------------------|-----------|------------|---------|----------------------------------|-----------|
| | | | | 7/22/2014 | Status* | Further Review Needed/Comments** | Resolved* | 8/12/2014 | Status* | Further Review Needed/Comments** | Resolved* | 8/27/2014 | Status* | Further Review Needed/Comments** | Resolved* | 9/23/2014 | Status* | Further Review Needed/Comments** | Resolved* | 10/8/2014 | Status* | Further Review Needed/Comments** | Resolved* | 10/22/2014 | Status* | Further Review Needed/Comments** | Resolved* | 11/10/2014 | Status* | Further Review Needed/Comments** | Resolved* | 12/18/2014 | Status* | Further Review Needed/Comments** | Resolved* |
| Groundwater - 3.09 | | Alluvium Removal | ongoing | | | | | | | | | | | | | | | | | | | | | | | | | | | | | | | | |
| Visual – 10.01 | | Landfill Elevations | ongoing | | | | | | | | | | | | | | | | | | | | | | | | | | | | | | | | |
| Visual – 10.02 | | Final Fill Elevations | ongoing | | | | | | | | | | | | | | | | | | | | | | | | | | | | | | | | |
| | | | | | | | | | | | | | | | | | | | | | | | | | | | | | | | | | | | |
| Hydrologist | | | | | | | | | | | | | | | | | | | | | | | | | | | | | | | | | | | |
| | | | | | | | | | | | | | | | | | | | | | | | | | | | | | | | | | | | |
| | | | | | | | | | | | | | | | | | | | | | | | | | | | | | | | | | | | |
| Grading & Drainage - 38 | 38 | Installation of Drainage Structures | ongoing | | | | | | | | | | | | | | | | | | | | | | | | | | | | | | | | |
| | | | | | | | | | | | | | | | | | | | | | | | | | | | | | | | | | | | |
| | | | | | | | | | | | | | | | | | | | | | | | | | | | | | | | | | | | |
| Geology - 1.17 | | Landfill Design/Construction-Seismic | ongoing | | | | | | | | | | | | | | | | | | | | | | | | | | | | | | | | |
| Surface Water - 2.01 | | Surface Water Runoff Interception | ongoing | | | | | | | | | | | | | | | | | | | | | | | | | | | | | | | | |
| Surface Water - 2.02 | | Surface Water Runoff Collection | ongoing | | | | | | | | | | | | | | | | | | | | | | | | | | | | | | | | |
| Surface Water - 2.03 | | Surface Drainage Control-Maintenance | ongoing | | | | | | | | | | | | ✓ | FRN | I-m | | | | | | | | | ✓ | FRN | I-p | | | | | | | |
| Surface Water - 2-04 | | Sedimentation Basin Capabilities | ongoing | | | | | | | | | | | | | | | | | | | | | | | | | | | | | | | | |
| Surface Water - 2.05 | | Underdrain Placement | ongoing | | | | | | | | | | | | | | | | | | | | | | | | | | | | | | | | |
| Surface Water - 2.07 | | Drainage Control System Design Approval | ongoing | | | | | | | | | | | | | | | | | | | | | | | | | | | | | | | | |
| Surface Water - 2.08 | | Surface Water Runoff-Drainage System | ongoing | | | | | | | | | | | | | | | | | | | | | | | | | | | | | | | | |
| Surface Water - 2.10 | | Surface Water Collection System-Monitoring | ongoing | | | | | | | | | | | | | | | | | | | | | | | | | | | | | | | | |
| Surface Water - 2.11 | | Surface Water Quality-Collection/Monitoring | ongoing | | | | | | | | | | | | | | | | | | | | | | | | | | | | | | | | |
| Surface Water - 2.12 | | Permanent/Temporary Drainage Facilities | ongoing | | | | | | | | | | | | ✓ | FRN | I-m | | | | | | | | | ✓ | FRN | I-p | | | | | | | |
| Surface Water - 2.13 | | Permanent/Temporary Drainage Facilities | ongoing | | | | | | | | | | | | | | | | | | | | | | | | | | | | | | | | |
| Surface Water - 2.14 | | Erosion Control Plan | ongoing | | | | | | | | | | | | ✓ | FRN | I-m | | | | | | | | | ✓ | C | I-p | | | | | | | |

* C = Compliant, NC = Non-Compliant, FRN = Further Review Needed, R = Resolved

** See Appendix I for Comments

Checkmark = Condition or mitigation was monitored

/ = Yearly or non-ongoing monitoring frequency

Sunshine Canyon Landfill County Mitigation Monitoring Summary

(10-01-2014 through 12-31-2014)

| Reference # | Mitigation # | County Mitigation Measures and Conditions Monitored by Discipline | Monitoring Frequency | Third Quarter | | | | | | | | | | | | | | | | Fourth Quarter | | | | | | | | | | | | | | | |
|---------------------|--------------|---|----------------------|---------------|---------|----------------------------------|-----------|-----------|---------|----------------------------------|-----------|-----------|---------|----------------------------------|-----------|-----------|---------|----------------------------------|-----------|----------------|---------|----------------------------------|-----------|------------|---------|----------------------------------|-----------|------------|---------|----------------------------------|-----------|------------|---------|----------------------------------|-----------|
| | | | | 7/22/2014 | Status* | Further Review Needed/Comments** | Resolved* | 8/12/2014 | Status* | Further Review Needed/Comments** | Resolved* | 8/27/2014 | Status* | Further Review Needed/Comments** | Resolved* | 9/23/2014 | Status* | Further Review Needed/Comments** | Resolved* | 10/8/2014 | Status* | Further Review Needed/Comments** | Resolved* | 10/22/2014 | Status* | Further Review Needed/Comments** | Resolved* | 11/10/2014 | Status* | Further Review Needed/Comments** | Resolved* | 12/18/2014 | Status* | Further Review Needed/Comments** | Resolved* |
| | | | | | | | | | | | | | | | | | | | | | | | | | | | | | | | | | | | |
| Groundwater - 3.03 | | Interception of Groundwater Seepage | ongoing | | | | | | | | | | | | | | | | | | | | | | | | | | | | | | | | |
| Groundwater - 3.06 | | Monitoring Wells | ongoing | | | | | | | | | | | | | | | | | | | | | | | | | | | | | | | | |
| | | | | | | | | | | | | | | | | | | | | | | | | | | | | | | | | | | | |
| Biologist | | | | | | | | | | | | | | | | | | | | | | | | | | | | | | | | | | | |
| | | | | | | | | | | | | | | | | | | | | | | | | | | | | | | | | | | | |
| | | | | | | | | | | | | | | | | | | | | | | | | | | | | | | | | | | | |
| | | | | | | | | | | | | | | | | | | | | | | | | | | | | | | | | | | | |
| Revegetation - 44 | 44 | Revegetation/Cover Requirements | ongoing | | | | | | | | | | | | | | | | | | | | | | | | | | | | | | | | |
| Revegetation - 44.A | 44.A | Temporary Hydroseed Vegetation | ongoing | ✓ | C | I-j | | ✓ | C | I-k | | ✓ | C | I-l | | ✓ | C | I-m | | ✓ | C | I-n | | ✓ | C | I-o | | ✓ | C | I-p | | ✓ | C | I-q | |
| Revegetation - 44.B | 44.B | Interim Reclamation/Revegetation | ongoing | | | | | | | | | | | | | | | | | | | | | | | | | | | | | | | | |
| Revegetation - 44.D | 44.D | Final Fill Slope Requirements | ongoing | | | | | | | | | | | | | | | | | | | | | | | | | | | | | | | | |
| Revegetation - 44.E | 44.E | | ongoing | | | | | | | | | | | | | | | | | | | | | | | | | | | | | | | | |
| | | | | | | | | | | | | | | | | | | | | | | | | | | | | | | | | | | | |
| Geology - 1.13 | | Drainage Plan Approval | ongoing | ✓ | C | I-j | | ✓ | C | I-k | | ✓ | C | I-l | | ✓ | C | I-m | | ✓ | C | I-n | | ✓ | C | I-o | | ✓ | C | I-p | | ✓ | C | I-q | |
| Geology - 1.14 | | Personnel Retention for Monitoring Soil Erosion | ongoing | ✓ | C | I-j | | ✓ | C | I-k | | ✓ | C | I-l | | ✓ | C | I-m | | ✓ | C | I-n | | ✓ | C | I-o | | ✓ | C | I-p | | ✓ | C | I-q | |
| Groundwater - 3.11 | | Irrigation/Revegetation Management-Personnel | ongoing | | | | | | | | | | | | | | | | | | | | | | | | | | | | | | | | |
| BIOTA – 4.10 | | Oak Tree Permit | ongoing | ✓ | C | NONE | | ✓ | C | NONE | | ✓ | C | NONE | | ✓ | C | NONE | | ✓ | C | NONE | | ✓ | C | NONE | | ✓ | C | NONE | | ✓ | C | NONE | |
| BIOTA – 4.11 | | Oak Tree Mitigation Plan | ongoing | ✓ | C | NONE | | ✓ | C | NONE | | ✓ | C | NONE | | ✓ | C | NONE | | ✓ | C | NONE | | ✓ | C | NONE | | ✓ | C | NONE | | ✓ | C | NONE | |
| BIOTA – 4.13 | | Oak Tree Mitigation Counting | ongoing | ✓ | C | NONE | | ✓ | C | NONE | | ✓ | C | NONE | | ✓ | C | NONE | | ✓ | C | NONE | | ✓ | C | NONE | | ✓ | C | NONE | | ✓ | C | NONE | |
| BIOTA – 4.20 | | Poultry Wire Screen | ongoing | ✓ | C | NONE | | ✓ | C | NONE | | ✓ | C | NONE | | ✓ | C | NONE | | ✓ | C | NONE | | ✓ | C | NONE | | ✓ | C | NONE | | ✓ | C | NONE | |
| BIOTA – 4.24 | | Drip Irrigation | ongoing | ✓ | C | NONE | | ✓ | C | NONE | | ✓ | C | NONE | | ✓ | C | NONE | | ✓ | C | NONE | | ✓ | C | NONE | | ✓ | C | NONE | | ✓ | C | NONE | |
| BIOTA – 4.27 | | Coastal Sage Scrub Mitigation Plan | ongoing | | | | | ✓ | FRN | I-k | | | | | | | | | | | | | | | | | | | | | ✓ | FRN | I-q | | |
| BIOTA – 4.28 | | Coastal Sage Scrub Seeding | ongoing | | | | | | | | | | | | | | | | | | | | | | | | | | | | | | | | |
| BIOTA – 4.29 | | San Diego Horned Lizard Mitigation | ongoing | | | | | | | | | | | | | | | | | | | | | | | | | | | | | | | | |

* C = Compliant, NC = Non-Compliant, FRN = Further Review Needed, R = Resolved

** See Appendix I for Comments

Checkmark = Condition or mitigation was monitored

/ = Yearly or non-ongoing monitoring frequency

Sunshine Canyon Landfill County Mitigation Monitoring Summary

(10-01-2014 through 12-31-2014)

| Reference # | Mitigation # | County Mitigation Measures and Conditions Monitored by Discipline | Monitoring Frequency | Third Quarter | | | | | | | | | | | | | | | | Fourth Quarter | | | | | | | | | | | | | | | |
|--------------------|--------------|---|----------------------|---------------|---------|----------------------------------|-----------|-----------|---------|----------------------------------|-----------|-----------|---------|----------------------------------|-----------|-----------|---------|----------------------------------|-----------|----------------|---------|----------------------------------|-----------|------------|---------|----------------------------------|-----------|------------|---------|----------------------------------|-----------|------------|---------|----------------------------------|-----------|
| | | | | 7/22/2014 | Status* | Further Review Needed/Comments** | Resolved* | 8/12/2014 | Status* | Further Review Needed/Comments** | Resolved* | 8/27/2014 | Status* | Further Review Needed/Comments** | Resolved* | 9/23/2014 | Status* | Further Review Needed/Comments** | Resolved* | 10/8/2014 | Status* | Further Review Needed/Comments** | Resolved* | 10/22/2014 | Status* | Further Review Needed/Comments** | Resolved* | 11/10/2014 | Status* | Further Review Needed/Comments** | Resolved* | 12/18/2014 | Status* | Further Review Needed/Comments** | Resolved* |
| | | | | | | | | | | | | | | | | | | | | | | | | | | | | | | | | | | | |
| BIOTA – 4.30 | | California Gnatcatcher Surveys | ongoing | ✓ | C | NONE | | ✓ | C | NONE | | ✓ | C | NONE | | ✓ | C | NONE | | ✓ | C | NONE | | ✓ | C | NONE | | ✓ | C | NONE | | ✓ | C | NONE | |
| BIOTA – 4.31 | | Least Bell's Vireo Surveys | ongoing | ✓ | C | NONE | | ✓ | C | NONE | | ✓ | C | NONE | | ✓ | C | NONE | | ✓ | C | NONE | | ✓ | C | NONE | | ✓ | C | NONE | | ✓ | C | NONE | |
| BIOTA – 4.32 | | Western Burrowing Owl Surveys | ongoing | ✓ | C | NONE | | ✓ | C | NONE | | ✓ | C | NONE | | ✓ | C | NONE | | ✓ | C | NONE | | ✓ | C | NONE | | ✓ | C | NONE | | ✓ | C | NONE | |
| BIOTA – 4.33 | | Migratory Bird Treaty Act | ongoing | ✓ | C | NONE | | ✓ | C | NONE | | ✓ | C | NONE | | ✓ | C | NONE | | ✓ | C | NONE | | ✓ | C | NONE | | ✓ | C | NONE | | ✓ | C | NONE | |
| BIOTA – 4.34 | | Raptor Nests Habitat | ongoing | ✓ | C | NONE | | ✓ | C | NONE | | ✓ | C | NONE | | ✓ | C | NONE | | ✓ | C | NONE | | ✓ | C | NONE | | ✓ | C | NONE | | ✓ | C | NONE | |
| BIOTA – 4.36 | | Personnel Retention for Monitoring Revegetation Plan | ongoing | | | | | | | | | | | | | | | | | | | | | | | | | | | | | | | | |
| BIOTA – 4.37 | | Personnel Retention for Monitoring Revegetation Plan, | status | | | | | | | | | | | | | | | | | | | | | | | | | | | | | | | | |
| BIOTA – 4.38 | | Green Waste Material | ongoing | | | | | | | | | | | | | | | | | | | | | | | | | | | | | | | | |
| BIOTA – 4.39 | | Revegetation of Slopes/Fill Areas | ongoing | | | | | | | | | | | | | | | | | | | | | | | | | | | | | | | | |
| BIOTA – 4.41 | | Revegetation Plan- Replacement Cover | ongoing | | | | | | | | | | | | | | | | | | | | | | | | | | | | | | | | |
| BIOTA – 4.42 | | Interim Vegetation | ongoing | ✓ | C | I-j | | ✓ | C | I-k | | ✓ | C | I-l | | ✓ | C | I-m | | ✓ | C | I-n | | ✓ | C | I-o | | ✓ | C | I-p | | ✓ | C | I-q | |
| BIOTA – 4.43 | | Replacement Riparian Habitat | status | | | | | | | | | | | | | | | | | | | | | | | | | | | | | | | | |
| Air Quality - 6.02 | | Dust Control | ongoing | ✓ | C | I-j | | ✓ | C | I-k | | ✓ | C | I-l | | ✓ | C | I-m | | ✓ | C | I-n | | ✓ | C | I-o | | ✓ | C | I-p | | ✓ | C | I-q | |
| Visual – 10.06 | | Upper Ridge Planting/Revegetation | ongoing | | | | | | | | | | | | | | | | | | | | | | | | | | | | | | | | |
| Visual – 10.07 | | Tree Planting Around Perimeter | ongoing | | | | | | | | | | | | | | | | | | | | | | | | | | | | | | | | |
| Visual – 10.08 | | Cover/Revegetation Requirements | ongoing | | | | | | | | | | | | | | | | | | | | | | | | | | | | | | | | |
| Visual – 10.08 | | Solid Waste Disposal Procedures | ongoing | ✓ | C | NONE | | ✓ | C | NONE | | ✓ | C | NONE | | ✓ | C | NONE | | ✓ | C | NONE | | ✓ | C | NONE | | ✓ | C | NONE | | ✓ | C | NONE | |
| Visual – 10.08 | | Final Cut Slope Steepness | ongoing | ✓ | C | NONE | | ✓ | C | NONE | | ✓ | C | NONE | | ✓ | C | NONE | | ✓ | C | NONE | | ✓ | C | NONE | | ✓ | C | NONE | | ✓ | C | NONE | |
| Visual – 10.08 | | Final Fill Slopes- Reclamation/Revegetation | status | | | | | | | | | | | | | | | | | | | | | | | | | | | | | | | | |
| Visual – 10.08 | | Revegetation Requirements | status | ✓ | C | I-j | | ✓ | C | I-k | | ✓ | C | I-l | | ✓ | C | I-m | | ✓ | C | I-n | | ✓ | C | I-o | | ✓ | C | I-p | | ✓ | C | I-q | |
| Visual – 10.09 | | Final Cover Composition Requirements | ongoing | | | | | | | | | | | | | | | | | | | | | | | | | | | | | | | | |
| Visual – 10.10 | | Buffer Zone Maintenance | ongoing | | | | | | | | | | | | | | | | | | | | | | | | | | | | | | | | |

* C = Compliant, NC = Non-Compliant, FRN = Further Review Needed, R = Resolved

** See Appendix I for Comments

Checkmark = Condition or mitigation was monitored

/ = Yearly or non-ongoing monitoring frequency

Sunshine Canyon Landfill County Mitigation Monitoring Summary

(10-01-2014 through 12-31-2014)

| Reference # | Mitigation # | County Mitigation Measures and Conditions Monitored by Discipline | Monitoring Frequency | Third Quarter | | | | | | | | | | | | | | | | Fourth Quarter | | | | | | | | | | | | | | | |
|--------------------------------|--------------|---|----------------------|---------------|---------|----------------------------------|-----------|-----------|---------|----------------------------------|-----------|-----------|---------|----------------------------------|-----------|-----------|---------|----------------------------------|-----------|----------------|---------|----------------------------------|-----------|------------|---------|----------------------------------|-----------|------------|---------|----------------------------------|-----------|------------|---------|----------------------------------|-----------|
| | | | | 7/22/2014 | Status* | Further Review Needed/Comments** | Resolved* | 8/12/2014 | Status* | Further Review Needed/Comments** | Resolved* | 8/27/2014 | Status* | Further Review Needed/Comments** | Resolved* | 9/23/2014 | Status* | Further Review Needed/Comments** | Resolved* | 10/8/2014 | Status* | Further Review Needed/Comments** | Resolved* | 10/22/2014 | Status* | Further Review Needed/Comments** | Resolved* | 11/10/2014 | Status* | Further Review Needed/Comments** | Resolved* | 12/18/2014 | Status* | Further Review Needed/Comments** | Resolved* |
| | | | | | | | | | | | | | | | | | | | | | | | | | | | | | | | | | | | |
| Water Conservation - 11.02 | | Plant Species | ongoing | | | | | | | | | | | | | | | | | | | | | | | | | | | | | | | | |
| Fire Service - 12.01 | | Brush Clearance Measures | ongoing | ✓ | C | NONE | | ✓ | C | NONE | | ✓ | C | NONE | | ✓ | C | NONE | | ✓ | C | NONE | | ✓ | C | NONE | | | | | | | | | |
| | | | | | | | | | | | | | | | | | | | | | | | | | | | | | | | | | | | |
| Air Quality & Noise Specialist | | | | | | | | | | | | | | | | | | | | | | | | | | | | | | | | | | | |
| | | | | | | | | | | | | | | | | | | | | | | | | | | | | | | | | | | | |
| | | | | | | | | | | | | | | | | | | | | | | | | | | | | | | | | | | | |
| Fugitive Dust - 45.F | 45.F | Fugitive Dust Monitoring | ongoing | | | | | | | | | | | | | | | | | | | | | | | | | | | | | | | | |
| Fugitive Dust - 45.I | 45.I | Paved Roads-Cleaning | ongoing | ✓ | C | NONE | | ✓ | C | NONE | | ✓ | C | NONE | | ✓ | C | NONE | | ✓ | C | NONE | | ✓ | C | NONE | | | | | | | | | |
| Fugitive Dust - 45.N | 45.N | Report Submission-Dust/Odor | every quarter | | | | | | | | | | | | | | | | | | | | | | | | | | | | | | | | |
| Air Quality Monitoring - 81 | 81 | Air Quality Monitoring-Tests | ongoing | | | | | | | | | | | | | | | | | | | | | | | | | | | | | | | | |
| | | | | | | | | | | | | | | | | | | | | | | | | | | | | | | | | | | | |
| | | | | | | | | | | | | | | | | | | | | | | | | | | | | | | | | | | | |
| Air Quality – 6.01 | | Fugitive Dust Aversion | ongoing | ✓ | C | NONE | | ✓ | C | NONE | | ✓ | C | NONE | | ✓ | C | NONE | | ✓ | C | NONE | | ✓ | C | NONE | | ✓ | C | NONE | | ✓ | C | NONE | |
| Air Quality – 6.01 | | Working Face Requirements | ongoing | ✓ | C | NONE | | ✓ | C | NONE | | ✓ | C | NONE | | ✓ | C | NONE | | ✓ | C | NONE | | ✓ | C | NONE | | ✓ | C | NONE | | ✓ | C | NONE | |
| Air Quality – 6.01 | | Erosion Control-Daily Cover | ongoing | ✓ | C | NONE | | ✓ | C | NONE | | ✓ | C | NONE | | ✓ | C | NONE | | ✓ | C | NONE | | ✓ | C | NONE | | ✓ | C | NONE | | ✓ | C | NONE | |
| Air Quality – 6.01 | | Soil Stockpile Requirements | ongoing | ✓ | C | NONE | | ✓ | C | NONE | | ✓ | C | NONE | | ✓ | C | NONE | | ✓ | C | NONE | | ✓ | C | NONE | | ✓ | C | NONE | | ✓ | C | NONE | |
| Air Quality – 6.01 | | Active Area Fill | ongoing | ✓ | C | NONE | | ✓ | C | NONE | | ✓ | C | NONE | | ✓ | C | NONE | | ✓ | C | NONE | | ✓ | C | NONE | | ✓ | C | NONE | | ✓ | C | NONE | |
| Air Quality – 6.01 | | Soil Sealant | ongoing | | | | | | | | | | | | | | | | | | | | | | | | | | | | | | | | |
| Air Quality – 6.01 | | Dust Emissions-Road Maintenance | ongoing | ✓ | C | NONE | | ✓ | C | NONE | | ✓ | C | NONE | | ✓ | C | NONE | | ✓ | C | NONE | | ✓ | C | NONE | | ✓ | C | NONE | | ✓ | C | NONE | |
| Air Quality – 6.01 | | Access Roads-Paving | ongoing | ✓ | C | NONE | | ✓ | C | NONE | | ✓ | C | NONE | | ✓ | C | NONE | | ✓ | C | NONE | | ✓ | C | NONE | | ✓ | C | NONE | | ✓ | C | NONE | |
| Air Quality – 6.01 | | Dust Generation-Dumping | ongoing | ✓ | C | NONE | | ✓ | C | NONE | | ✓ | C | NONE | | ✓ | C | NONE | | ✓ | C | NONE | | ✓ | C | NONE | | ✓ | C | NONE | | ✓ | C | NONE | |

* C = Compliant, NC = Non-Compliant, FRN = Further Review Needed, R = Resolved

** See Appendix I for Comments

Checkmark = Condition or mitigation was monitored

/ = Yearly or non-ongoing monitoring frequency

Sunshine Canyon Landfill County Mitigation Monitoring Summary

(10-01-2014 through 12-31-2014)

| Reference # | Mitigation # | County Mitigation Measures and Conditions Monitored by Discipline | Monitoring Frequency | Third Quarter | | | | | | | | | | | | | | | | Fourth Quarter | | | | | | | | | | | | | | | |
|--|--------------|---|----------------------|---------------|---------|----------------------------------|-----------|-----------|---------|----------------------------------|-----------|-----------|---------|----------------------------------|-----------|-----------|---------|----------------------------------|-----------|----------------|---------|----------------------------------|-----------|------------|---------|----------------------------------|-----------|------------|---------|----------------------------------|-----------|------------|---------|----------------------------------|-----------|
| | | | | 7/22/2014 | Status* | Further Review Needed/Comments** | Resolved* | 8/12/2014 | Status* | Further Review Needed/Comments** | Resolved* | 8/27/2014 | Status* | Further Review Needed/Comments** | Resolved* | 9/23/2014 | Status* | Further Review Needed/Comments** | Resolved* | 10/8/2014 | Status* | Further Review Needed/Comments** | Resolved* | 10/22/2014 | Status* | Further Review Needed/Comments** | Resolved* | 11/10/2014 | Status* | Further Review Needed/Comments** | Resolved* | 12/18/2014 | Status* | Further Review Needed/Comments** | Resolved* |
| | | | | | | | | | | | | | | | | | | | | | | | | | | | | | | | | | | | |
| Air Quality - 6.01 | | Water Tanks/Piping Maintenance | ongoing | ✓ | C | NONE | | ✓ | C | NONE | | ✓ | C | NONE | | ✓ | C | NONE | | ✓ | C | NONE | | ✓ | C | NONE | | ✓ | C | NONE | | ✓ | C | NONE | |
| Air Quality - 6.01 | | Wind Speed Monitoring | ongoing | ✓ | C | NONE | | ✓ | C | NONE | | ✓ | C | NONE | | ✓ | C | NONE | | ✓ | C | NONE | | ✓ | C | NONE | | ✓ | C | NONE | | ✓ | C | NONE | |
| Air Quality - 6.01 | | Report Submission-Dust/Odor | every quarter | / | | | | / | | | | / | | | | / | | | | / | | | | / | | | | / | | | | / | | | |
| Odor/Landfill Gas - 7.03 | | Odor/Landfill Gas Monitoring Program | ongoing | / | | | | / | | | | / | | | | / | | | | / | | | | / | | | | / | | | | / | | | |
| Odor/Landfill Gas - 7.03 | | Landfill Surface Sampling | ongoing | / | | | | / | | | | / | | | | / | | | | / | | | | / | | | | / | | | | / | | | |
| Odor/Landfill Gas - 7.03 | | Landfill Perimeter Air Samples | ongoing | / | | | | / | | | | / | | | | / | | | | / | | | | / | | | | / | | | | / | | | |
| Odor/Landfill Gas - 7.03 | | Landfill Surface Monitoring | ongoing | / | | | | / | | | | / | | | | / | | | | / | | | | / | | | | / | | | | / | | | |
| Odor/Landfill Gas - 7.03 | | LFG Collection System Monitoring | ongoing | / | | | | / | | | | / | | | | / | | | | / | | | | / | | | | / | | | | / | | | |
| Noise - 9.01 | | Landfill Access/Operation | info | / | | | | / | | | | / | | | | / | | | | / | | | | / | | | | / | | | | / | | | |
| Noise - 9.03 | | Landfill Equipment-Mufflers/Silencers | ongoing | ✓ | C | NONE | | ✓ | C | NONE | | ✓ | C | NONE | | ✓ | C | NONE | | ✓ | C | NONE | | ✓ | C | NONE | | ✓ | C | NONE | | ✓ | C | NONE | |
| Admin Rpts/Pgms-17.16 | | Air Quality Monitoring-Corrective Action Plan | ongoing | / | | | | / | | | | / | | | | / | | | | / | | | | / | | | | / | | | | / | | | |
| | | | | | | | | | | | | | | | | | | | | | | | | | | | | | | | | | | | |
| | | | | | | | | | | | | | | | | | | | | | | | | | | | | | | | | | | | |
| Hydrology, Hazardous Waste / Risk of Upset | | | | | | | | | | | | | | | | | | | | | | | | | | | | | | | | | | | |
| | | | | | | | | | | | | | | | | | | | | | | | | | | | | | | | | | | | |
| | | | | | | | | | | | | | | | | | | | | | | | | | | | | | | | | | | | |
| IMP - Part IV.E | IMP 4 | Load Inspection-Random Manual | ongoing | | | | | | | | | | | | | | | | | | | | | | | | | | | | | | | | |
| | | | | | | | | | | | | | | | | | | | | | | | | | | | | | | | | | | | |
| Groundwater - 3.05 | | Leachate Collection and Removal System | ongoing | | | | | | | | | | | | | | | | | | | | | | | | | | | | | | | | |
| Groundwater - 3.15 | | Underground Diesel Fuel Storage Tanks | ongoing | / | NA | NONE | | / | NA | NONE | | / | NA | NONE | | / | NA | NONE | | / | NA | NONE | | / | NA | NONE | | / | NA | NONE | | / | NA | NONE | |
| Fire Service - 12.02 | | On-site Fire Response Capabilities-Operating | ongoing | | | | | | | | | | | | | | | | | | | | | | | | | | | | | | | | |
| Fire Service - 12.03 | | On-site Fire Response Capabilities-Roads/Water | ongoing | | | | | | | | | | | | | | | | | | | | | | | | | | | | | | | | |

* C = Compliant, NC = Non-Compliant, FRN = Further Review Needed, R = Resolved

** See Appendix I for Comments

Checkmark = Condition or mitigation was monitored

/ = Yearly or non-ongoing monitoring frequency

Sunshine Canyon Landfill County Mitigation Monitoring Summary

(10-01-2014 through 12-31-2014)

| Reference # | Mitigation # | County Mitigation Measures and Conditions Monitored by Discipline | Monitoring Frequency | Third Quarter | | | | | | | | | | | | | | | | Fourth Quarter | | | | | | | | | | | | | | | |
|------------------------------|--------------|---|----------------------|---------------|---------|----------------------------------|-----------|-----------|---------|----------------------------------|-----------|-----------|---------|----------------------------------|-----------|-----------|---------|----------------------------------|-----------|----------------|---------|----------------------------------|-----------|------------|---------|----------------------------------|-----------|------------|---------|----------------------------------|-----------|------------|---------|----------------------------------|-----------|
| | | | | 7/22/2014 | Status* | Further Review Needed/Comments** | Resolved* | 8/12/2014 | Status* | Further Review Needed/Comments** | Resolved* | 8/27/2014 | Status* | Further Review Needed/Comments** | Resolved* | 9/23/2014 | Status* | Further Review Needed/Comments** | Resolved* | 10/8/2014 | Status* | Further Review Needed/Comments** | Resolved* | 10/22/2014 | Status* | Further Review Needed/Comments** | Resolved* | 11/10/2014 | Status* | Further Review Needed/Comments** | Resolved* | 12/18/2014 | Status* | Further Review Needed/Comments** | Resolved* |
| | | | | | | | | | | | | | | | | | | | | | | | | | | | | | | | | | | | |
| Fire Service - 12.04 | | On-site Fuel Storage Tanks-Permit Issuance | ongoing | | | | | | | | | | | | | | | | | | | | | | | | | | | | | | | | |
| Fire Service - 12.05 | | Building Limits | ongoing | | | | | | | | | | | | | | | | | | | | | | | | | | | | | | | | |
| Fire Service - 12.06 | | Methane Gas Monitoring-On-site Structures | ongoing | | | | | | | | | | | | | | | | | | | | | | | | | | | | | | | | |
| Hazardous Materials – 13.02 | | Waste Load Checking Program | ongoing | | | | | | | | | | | | | | | | | | | | | | | | | | | | | | | | |
| Hazardous Materials – 13.05 | | Hazardous Waste Disposal | ongoing | | | | | | | | | | | | | | | | | | | | | | | | | | | | | | | | |
| Hazardous Materials – 13.10 | | Hazardous Waste-Procedures | ongoing | | | | | | | | | | | | | | | | | | | | | | | | | | | | | | | | |
| Hazardous Materials – 13.11 | | Spill Response Program | ongoing | | | | | | | | | | | | | | | | | | | | | | | | | | | | | | | | |
| Safety - 16.02 | | Injury and Illness Prevention Program | status | | | | | | | | | | | | | | | | | | | | | | | | | | | | | | | | |
| Safety - 16.03 | | Working Conditions-Monitoring | status | | | | | | | | | | | | | | | | | | | | | | | | | | | | | | | | |
| Safety - 16.04 | | Inspection Checklist-Work Area Exposure | status | | | | | | | | | | | | | | | | | | | | | | | | | | | | | | | | |
| Safety - 16.07 | | Accident/Injury Reports | status | | | | | | | | | | | | | | | | | | | | | | | | | | | | | | | | |
| Safety - 16.08 | | First-aid Kits | ongoing | | | | | | | | | | | | | | | | | | | | | | | | | | | | | | | | |
| Safety - 16.10 | | Lockout/Blackout Procedures | status | | | | | | | | | | | | | | | | | | | | | | | | | | | | | | | | |
| Safety - 16.11 | | Personal Protective Equipment | status | | | | | | | | | | | | | | | | | | | | | | | | | | | | | | | | |
| Landfill Operation - 18.8 | | Prohibited Waste Procedures | ongoing | | | | | | | | | | | | | | | | | | | | | | | | | | | | | | | | |
| | | | | | | | | | | | | | | | | | | | | | | | | | | | | | | | | | | | |
| Archaeologist | | | | | | | | | | | | | | | | | | | | | | | | | | | | | | | | | | | |
| | | | | | | | | | | | | | | | | | | | | | | | | | | | | | | | | | | | |
| | | | | | | | | | | | | | | | | | | | | | | | | | | | | | | | | | | | |
| Ecological Significance - 62 | 62 | Archaeological/Paleontological Identification/Conservation | ongoing | ✓ | C | I-j | | ✓ | C | I-k | | ✓ | C | I-l | | ✓ | C | I-m | | ✓ | C | I-n | | ✓ | C | I-o | | ✓ | C | I-p | | ✓ | C | I-q | |
| IMP - Part VII.B | IMP 7 | Archaeological/Paleontological | ongoing | / | NA | NONE | | / | NA | NONE | | / | NA | NONE | | / | NA | NONE | | / | NA | NONE | | / | NA | NONE | | / | NA | NONE | | / | NA | NONE | |
| Archaeological – 5.01 | | Archaeological Resurvey | ongoing | / | NA | NONE | | / | NA | NONE | | / | NA | NONE | | / | NA | NONE | | / | NA | NONE | | / | NA | NONE | | / | NA | NONE | | / | NA | NONE | |

* C = Compliant, NC = Non-Compliant, FRN = Further Review Needed, R = Resolved

** See Appendix I for Comments

Checkmark = Condition or mitigation was monitored

/ = Yearly or non-ongoing monitoring frequency

Further Review Needed-Comments/ I-n through I-q Fourth Quarter 2014 Site Visits Appendix I

| Discipline | City Condition Reference # / Mitigation # | County Condition Reference # / Mitigation # | Responsible Agency | Further Review Needed-Comments |
|------------------------|---|---|---|--|
| Project Manager | Q – B.2.c | | City Planning | I-n: The access road realignment area had grading being done to winterize the slopes. I-p: The access road realignment area had BMP put on the slopes. Three water runoff control basins were constructed between the condensate treatment plant and the terminal basin. One additional basin was constructed just west of the oil field access road. |
| | Q – B.2.d | | City Planning | I-q: The City's 10-year review shall begin in 2015 and shall be concluded within six months. This review will most likely start after the next TAC meeting in April 2015. |
| | Q - C.10.c | | City Planning | I-p: The October two-day scheduled turn-around shut-down confirmed that all gas-to-energy systems were performing well. Minor modifications were made to the pretreatment operations and the off-gas flare. I-q: A two-day Edison outage was being planned for the gas-to-energy facility. |
| | | Odor/Landfill Gas - 7.07 | County Planning/ SCAQMD SCL-LEA | I-p and I-q: See Q - C.10.c above. |
| | | Gas - 52 | County DPW EPD/SCL-LEA County Forester Fire Warden | I-p and I-q: See Q - C.10.c above. |

| Discipline | City Condition Reference # / Mitigation # | County Condition Reference #/ Mitigation # | Responsible Agency | Further Review Needed-Comments |
|------------------------|--|---|-------------------------------|---|
| Project Manager | M - 4.1.4 / 11 | | | I-o: A new foundation and enclosure for the on-site seismic detection and recorder equipment was installed at the recycled water handling facility location. New seismic detection and recording equipment has been placed on order. The schedule for the installation of the new equipment had not been set. |

| Discipline | City Condition Reference # / Mitigation # | County Condition Reference #/ Mitigation # | Responsible Agency | Further Review Needed-Comments |
|-----------------|---|--|-----------------------|--|
| Project Manager | M - 4.2.13 / 33 | | | <p>I-n: The condensate treatment plant had liquids being pumped into a truck and there were localized odors coming from the truck and Baker tank at the facility.</p> <p>I-o: The condensate treatment facility had strong localized odors coming from the Baker tank and the transfer pump truck vent when it was loading condensate to haul to the leachate treatment facility. The transfer pipelines have not yet been replaced. The 55-gallon carbon drum vent scrubbers at the leachate treatment facility were not eliminating tank vent odors. Replacements should be investigated.</p> <p>There was odor noticed coming from the sewer pumping underground vaults. Republic staff was notified of these conditions.</p> <p>I-p: The condensate treatment facility process was being modified to allow for higher liquid levels in the process tanks and to allow for higher vapor pressure liquids. Republic and Invirotreat staff indicated that the constituents of the condensate has changed now that the gas-to-energy plant was operating, requiring the process change. The 55-gallon carbon drum vent scrubbers at the leachate treatment and sewer connection locations were replaced with new carbon drums.</p> |

| Discipline | City Condition Reference # / Mitigation # | County Condition Reference # / Mitigation # | Responsible Agency | Further Review Needed-Comments |
|------------------------|---|---|----------------------------------|---|
| Project Manager | M - 4.2.13 / 33 | | | I-q: The odorizer system along the Old City South berm was working and a light flowery smell was noted only when we were within a foot or two of the pipe. |
| | M -4.2.13/ 29, 30, 32, 34 | | City Planning/SCL-LEA/SCAQMD | I-n through I-q: Compliance with these mitigation measures concerning landfill gas monitoring and odor control and detection is being monitored by a multi-agency team led by the SCAQMD. Only obvious gas emission sources, lack of cover, or exposed trash resulting in odor and gas emissions observed during the monitoring visit will be reported. None of these were observed during the quarterly monitoring visits this period. |
| | | Amendment 45.N - 4.a, 4.c, 4.d | County DPW-EPD | See M-4.2.13/29, 30, 32, and 34 above. |
| | | Amendment 45.N - 5 | County DPW-EPD | See M-4.2.13/29, 30, 32, and 34 above. |
| | | Surface Water - 2.15 | County DPW EPD/ LARWQCB, SCL-LEA | I-p: See M-4.3.1/46 below. |
| | | Odor/Landfill Gas - 7.06 | County DPW-EPD/SCL-LEA/SCAQMD | I-n through I-q: See M-4.2.13/33 above. |

| Discipline | City Condition Reference # / Mitigation # | County Condition Reference #/ Mitigation # | Responsible Agency | Further Review Needed-Comments |
|------------------------|---|--|-----------------------|---|
| Project Manager | M - 4.4.2/69 | | City Planning | I-q: The City of Los Angeles and Republic have written an agreement for using a portion of the Chatsworth Reservoir as a wetlands and riparian mitigation site. The Chatsworth mitigation site agreement has been reviewed by the Corps, and they have provided Republic and the City with comments. The City's legal department is now reviewing their comments. |
| | M - 4.7.1/86 | | | I-o: Some of the oak mitigation trees along the oil field access road near the proposed environmental center location were showing stress and dieback due to a lack of water. Part of the drip irrigation system was not working. |

| Discipline | City Condition Reference # / Mitigation # | County Condition Reference #/ Mitigation # | Responsible Agency | Further Review Needed-Comments |
|--|---|--|--|--|
| Project Manager | M – 4.9.3/109 | | City Planning | <p>I-o: Bags of litter and a mattress box spring was seen on Sierra Highway near the I-14 overpass. Dumped debris was seen south of the landfill entrance in front of and behind the wall at the gas odorization facility.</p> <p>I-p: The illegally dumped mattress box spring and bags of trash observed on the prior site monitoring visit had not been removed. This illegally dumped material is outside of the area covered by the landfill clean-up condition. This dumping was reported to the City of Los Angeles.</p> <p>I-q: The piles of rock and rubble seen on San Fernando Road south of the Old Road had not been removed and had grown in size. Republic was going to ask the LEA if they could assist in getting it removed.</p> |
| | | Visual – 10.11 | SCL-LEA | I-o, I-p, and I-q: see M – 4.9.3/109 above. |
| Civil and Geotechnical Engineer | M – 4.1.4/11 | | | I-o: See 4.1.4/11 above under Project Manager. |
| | | Geology – 1.16 | County DPW EPD / County LEA | I-o: See 4.1.4/11 above. |
| Hydrologist | M-4.3.1/36 | | City Planning/ LARWQCB CalRecycle SCL-LEA PW-BOE | I-p: As previously observed, there is no clear drainage pattern on the decks and there are numerous low spots where water may pond and infiltrate. |
| | | Surface Water – 2.03 | County DPW EPD/ LARWQCB SCL-LEA | I-p: See M-4.3.1/36 above. |

| Discipline | City Condition Reference # / Mitigation # | County Condition Reference #/ Mitigation # | Responsible Agency | Further Review Needed-Comments |
|--------------------|---|--|---|---|
| Hydrologist | M - 4.3.1/ 37, 38 | | City Planning/ LARWQCB CalRecycle SCL-LEA PW-BOE | I-p: The majority of inactive and/or interim areas that have been disturbed have no temporary or permanent vegetation or other surface cover to retard water erosion and reduce airborne dust. |
| | | Surface Water - 2.12 | County DPW EPD/ LARWQCB SCL-LEA | I-p: See M - 4.3.1/ 37, 38 above. |
| | M - 4.3.1/ 40, 45 | | City Planning/ LARWQCB CalRecycle SCL-LEA PW-BOE LADBS | I-p: Winterization of the slopes was finished. Jute netting was placed on the soil slopes with straw wattles. A three-tier basin system was installed below the condensate treatment facility. An additional basin was installed below the slopes west of the oil field access road. Hay bales provide additional drainage control. |
| | | Surface Water - 2.14 | LARWQCB / County DPW EPD | I-p: See M - 4.3.1/ 40, 45 above. |

| Discipline | City Condition Reference # / Mitigation # | County Condition Reference # / Mitigation # | Responsible Agency | Further Review Needed-Comments |
|--------------------|---|---|---|--|
| Hydrologist | M - 4.3.1/ 46 | | City Planning/ LARWQCB CalRecycle PW-BOE | I-p: The conditions of a portion on the westside drainage channel between Basin A and Basin D, noted in previous site visits as needing repair, has been cleaned with all soil and debris removed and the concrete ground on the upstream side to minimize the risk of hydraulic jump or underflow. Republic staff stated that the flow into this portion of the channel has been reduced to only that from the watershed (i.e. the hills on the west side) adjacent to the channel and no flow from Basin D. Republic staff stated that maintenance will be done when other westside channel work is scheduled. |
| | | Surface Water - 2.15 | LARWQCB / County DPW EPD | I-p: See M - 4.3.1/ 46 above. |
| Biologist | M - 4.1.1 / 6 | | City Planning/ LARWQCB CalRecycle SCL-LEA LADBS | I-n through I-o: The hydroseeding of interim or inactive slopes was completed in June 2014. Due to the lack of rain, no irrigation and other factors, the hydroseeding did not germinate. I-p: The recent rains have not resulted in the germination of the hydroseeding. I-q: Some areas that were hydroseeded did germinate as a result of the recent rain events. |
| | | Geology - 1.14 | LARWQCB/ County Forester | I-n through I-q: See M - 4.1.1/6 above. |
| | M - 4.2.11 / 23 | | City Planning | I-n through I-q: See M - 4.1.1/6 above. |

| Discipline | City Condition Reference # / Mitigation # | County Condition Reference # / Mitigation # | Responsible Agency | Further Review Needed-Comments |
|---|---|---|---|---|
| Biologist | | Geology - 1.13 | County DPW EPD/ County Forester LARWQCB | I-n through I-q: See M - 4.1.1/6 above. |
| | M - 4.2.12 | | SCL-LEA/ City Planning | I-n through I-q: See M - 4.1.1/6 above. |
| | | Revegetation - 44.A | SCL-LEA/ County DPW EPD Regional Planning County Biologist | I-n through I-q: See M - 4.1.1/6 above. |
| | | Biota - 4.42 | SCL-LEA | I-n through I-q: See M - 4.1.1/6 above. |
| | | Air Quality - 6.02 | SCAQMD/ SCL-LEA | I-n through I-q: See M - 4.1.1/6 above. |
| | | Visual - 10.08 | County Forester | I-n through I-q: See M - 4.1.1/6 above. |
| | M - 4.4.1 / 60 | | City Planning | I-q: The City Deck C sage mitigation plants have greened up and grown from the recent rains and cool weather. The California sage and other non-Atriplex (salt tolerant) plants were observed doing well. |
| | | Biota - 4.27 | SCL-LEA/CDFW | I-q: The County sage area was much greener and appeared more filled in with vegetative growth due to the recent rains. |
| Hydrology, Hazardous Waste / Risk of Upset | M-4.9.4/125 | | City Planning/ CalRecycle Cal/OSHA SCL-LEA | I-o: The south perimeter gate in the oil field was closed but not locked. |

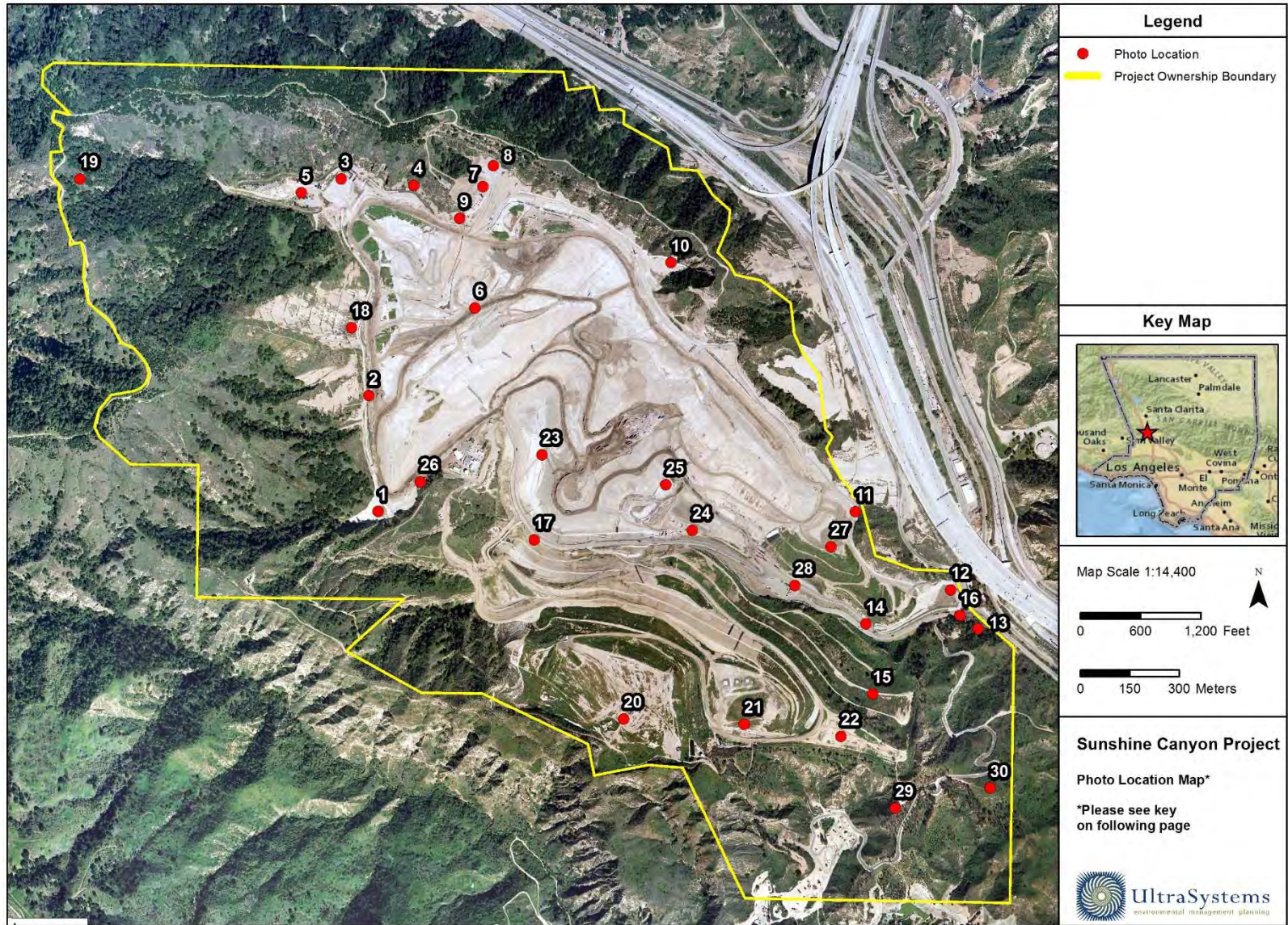
| Discipline | City Condition Reference # / Mitigation # | County Condition Reference #/ Mitigation # | Responsible Agency | Further Review Needed-Comments |
|-----------------------|---|--|-----------------------|--|
| Archaeologist | M-4.19.1/183 | | City Planning | I-n: Archaeological surveys were performed on the area west of the office facilities and area south of there where site grading is being done. No items of concern were found. Archaeological reports are on file and are available in Republic's offices. |
| | | Ecological Significance 62 | County Planning | I-n: See M-4.19.1/183 above. |
| Paleontologist | M-4.19.2/187 | | City Planning | I-n through I-q: A paleontological survey and field inspections were performed on the area where site grading is being done west of the landfill offices. Whale bone and other marine fragments were found. No items were recoverable in one piece. Paleontological reports are on file and are available in Republic's offices. |
| | | Ecological Significance 62 | County Planning | I-n through I-q: See M-4.19.2/187 above. |

[This page is blank for printing]

Appendix II

Relevant Site Photos

[This page is blank for printing]



Service Layer Credits: National Geographic, Esri, DeLorme, NAVTEQ, UNEP-WCMC, USGS, NASA, ESA, METI, NRCAN, GEBCO, NOAA, IPC, Los Angeles County, 2010; Republic, 2013; UltraSystems Environmental, Inc., 2014-2015

[This page is blank for printing]

Photo Location Map Key

| Map Location | Title | Photo Number |
|---------------------|--|---------------------|
| 1. | Basin A | 5-10 |
| 2. | Westside Drainage Channel | 11-19 |
| 3. | Basin D | - |
| 4. | Basin D North Drainage | 31-33 |
| 5. | Materials Storage Area | 25-30 |
| 6. | County Top Deck | 39-47 |
| 7. | Flares 8-10 | 48 |
| 8. | Gas-to Energy Facility | 48 |
| 9. | Flares 8-10 Adjacent Hillsides | 34-38 |
| 10. | Basin B | 51-54 |
| 11. | Eastside Drainage Channel | 49-50 |
| 12. | Terminal Basin | 57-60 |
| 13. | Wastewater Sewer Connection Facility | - |
| 14. | Existing Access Road | - |
| 15. | Access Road Realignment Area | 61-76 |
| 16. | Leachate Treatment Facility | - |
| 17. | New Truck Scale Facilities | 77-80 |
| 18. | County Sage Mitigation Area | 20-24 |
| 19. | Big Cone Fir Mitigation | - |
| 20. | City Sage Mitigation – Deck A | - |
| 21. | City Sage Mitigation – Deck B | 101-102 |
| 22. | City Sage Mitigation – Deck C | 81-96 |
| 23. | Cell CC3A | - |
| 24. | Cell CC3A Buttress Area | - |
| 25. | Site Working Area | 116-121 |
| 26. | Site Grading West of Office | 1-4 |
| 27. | Old City North | 55-56 |
| 28. | Condensate Treatment Facility | 109-113 |
| 29. | PM-10 Mitigation Planting | 97-100 |
| 30. | Oak Tree Mitigation along Oil Field Road | 103-108 |

[This page is blank for printing]



Photo 1: Site Grading West of Office: October 22, 2014



Photo 2: Site Grading West of Office: October 22, 2014



Photo 3: Site Grading West of Office: October 22, 2014



Photo 4: Site Grading West of Office: October 22, 2014



Photo 5: Basin A: October 8, 2014



Photo 6: Basin A: October 8, 2014



Photo 7: Basin A: October 22, 2014



Photo 8: Basin A: November 10, 2014



Photo 9: Basin A: December 18, 2014



Photo 10: Basin A: December 18, 2014



Photo 11: Westside Drainage Channel: October 8, 2014



Photo 12: Westside Drainage Channel: October 8, 2014



Photo 13: Westside Drainage Channel: October 8, 2014



Photo 14: Westside Drainage Channel: November 10, 2014



Photo 15: Westside Drainage Channel: November 10, 2014



Photo 16: Westside Drainage Channel: December 18, 2014



Photo 17: Westside Drainage Channel: December 18, 2014



Photo 18: Westside Drainage Channel: December 18, 2014



Photo 19: Westside Drainage Channel: December 18, 2014



Photo 20: County Sage Mitigation Area: December 18, 2014



Photo 21: County Sage Mitigation Area: December 18, 2014

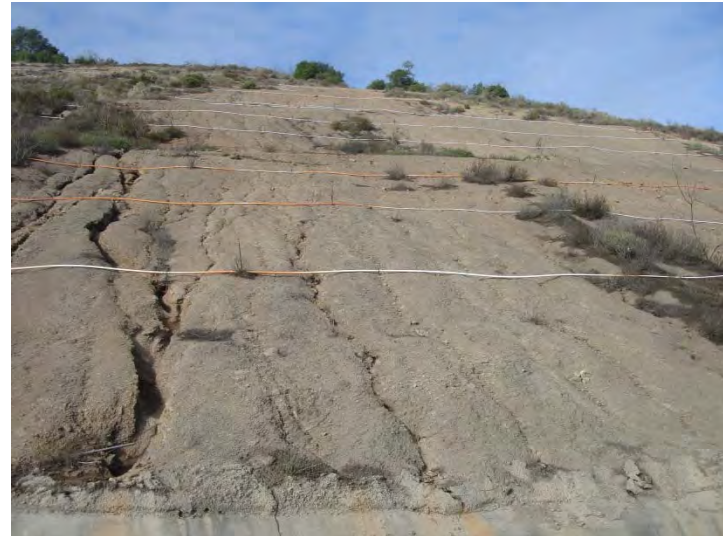


Photo 22: County Sage Mitigation Area: December 18, 2014



Photo 23: County Sage Mitigation Area: December 18, 2014



Photo 24: County Sage Mitigation Area: December 18, 2014



Photo 25: Material Storage Area: October 8, 2014



Photo 26: Material Storage Area: October 8, 2014



Photo 27: Material Storage Area: October 8, 2014



Photo 28: Material Storage Area: October 8, 2014



Photo 29: Material Storage Area: October 8, 2014



Photo 30: Material Storage Area: November 10, 2014



Photo 31: Basin D Outlet Channel: October 8, 2014



Photo 32: Basin D Outlet Channel: October 8, 2014



Photo 33: Basin D Outlet Channel: December 18, 2014



Photo 34: Flare 8 Hillside: December 18, 2014



Photo 35: Flare 8 Hillside: December 18, 2014



Photo 36: Flare 8 Hillside: December 18, 2014



Photo 37: Flare 8 Hillside: December 18, 2014



Photo 38: Flare 8 Hillside: December 18, 2014



Photo 39: County Top Deck: October 22, 2014



Photo 40: County Top Deck: October 22, 2014



Photo 41: County Top Deck: November 10, 2014



Photo 42: County Top Deck: November 10, 2014



Photo 43: County Top Deck: December 18, 2014



Photo 44: County Top Deck: December 18, 2014



Photo 45: County Top Deck: December 18, 2014



Photo 46: County Top Deck: December 18, 2014



Photo 47: County Top Deck: December 18, 2014



Photo 48: Flares 9 & 10 and Gas to Energy Facility: October 8, 2014



Photo 49: Eastside Drainage to Basin B: December 18, 2014



Photo 50: Eastside Drainage to Basin B: December 18, 2014



Photo 51: Basin B: November 10, 2014



Photo 52: Basin B: November 10, 2014



Photo 53: Basin B: December 18, 2014



Photo 54: Basin B: December 18, 2014



Photo 55: Old City North: November 10, 2014



Photo 56: Old City North: November 10, 2014



Photo 57: Terminal Basin: October 22, 2014



Photo 58: Terminal Basin: November 10, 2014



Photo 59: Terminal Basin: December 18, 2014

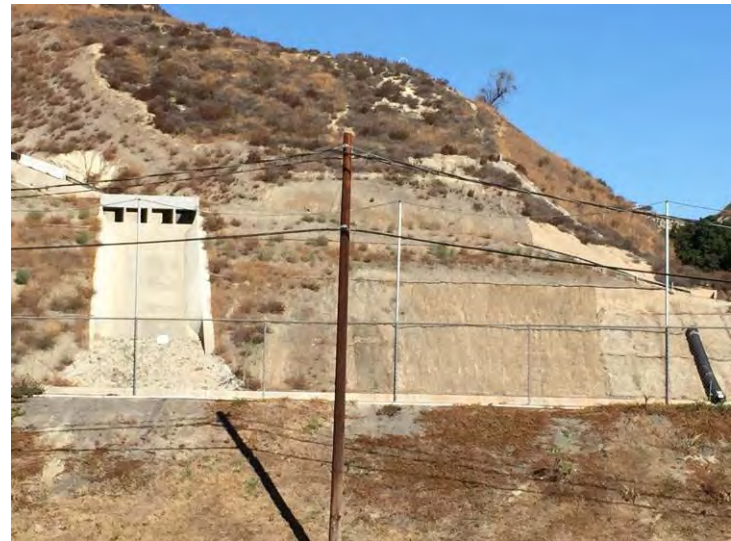


Photo 60: Terminal Basin: December 18, 2014



Photo 61: Access Road Realignment Area: October 8, 2014



Photo 62: Access Road Realignment Area: October 8, 2014



Photo 63: Access Road Realignment Area: October 8, 2014



Photo 64: Access Road Realignment Area: October 8, 2014



Photo 65: Access Road Realignment Area: October 22, 2014



Photo 66: Access Road Realignment Area: October 22, 2014



Photo 67: Access Road Realignment Area: November 10, 2014



Photo 68: Access Road Realignment Area: November 10, 2014



Photo 69: Access Road Realignment Area: November 10, 2014



Photo 70: Access Road Realignment Area: November 10, 2014



Photo 71: Access Road Realignment Area: December 18, 2014



Photo 72: Access Road Realignment Area: December 18, 2014



Photo 73: Access Road Realignment Area: December 18, 2014



Photo 74: Access Road Realignment Area: December 18, 2014



Photo 75: Access Road Realignment Area: December 18, 2014



Photo 76: Access Road Realignment Area: December 18, 2014



Photo 77: New Truck Scale Facilities: October 8, 2014



Photo 78: New Truck Scale Facilities: October 8, 2014



Photo 79: New Truck Scale Facilities: October 8, 2014



Photo 80: New Truck Scale Facilities: November 10, 2014



Photo 81: City Sage Mitigation Deck C: October 8, 2014



Photo 82: City Sage Mitigation Deck C: October 8, 2014



Photo 83: City Sage Mitigation Deck C: October 8, 2014



Photo 84: City Sage Mitigation Deck C: October 8, 2014



Photo 85: City Sage Mitigation Deck C: October 8, 2014



Photo 86: City Sage Mitigation Deck C: October 8, 2014



Photo 87: City Sage Mitigation Deck C: October 8, 2014



Photo 88: City Sage Mitigation Deck C: December 18, 2014



Photo 89: City Sage Mitigation Deck C: December 18, 2014



Photo 90: City Sage Mitigation Deck C: December 18, 2014



Photo 91: City Sage Mitigation Deck C: December 18, 2014



Photo 92: City Sage Mitigation Deck C: December 18, 2014



Photo 93: City Sage Mitigation Deck C: December 18, 2014



Photo 94: City Sage Mitigation Deck C: December 18, 2014



Photo 95: City Sage Mitigation Deck C: December 18, 2014



Photo 96: City Sage Mitigation Deck C: December 18, 2014



Photo 97: PM-10 Mitigation Planting: December 18, 2014



Photo 98: PM-10 Mitigation Planting: December 18, 2014



Photo 99: PM-10 Mitigation Planting: December 18, 2014



Photo 100: PM-10 Mitigation Planting: December 18, 2014



Photo 101: City Sage Mitigation Deck B: October 8, 2014



Photo 102: City Sage Mitigation Deck B: October 8, 2014



Photo 103: Oak Tree Mitigation along Oil Field Road: October 22, 2014



Photo 104: Oak Tree Mitigation along Oil Field Road: October 22, 2014



Photo 105: Oak Tree Mitigation along Oil Field Road: October 22, 2014



Photo 106: Oak Tree Mitigation along Oil Field Road: October 22, 2014



Photo 107: Oak Tree Mitigation along Oil Field Road: October 22, 2014



Photo 108: Oak Tree Mitigation along Oil Field Road: October 22, 2014



Photo 109: Condensate Treatment Facility: October 8 2014



Photo 110: Condensate Treatment Facility: October 8, 2014



Photo 111: Condensate Treatment Facility: October 22, 2014



Photo 112: Condensate Treatment Facility: October 22, 2014



Photo 113: Condensate Treatment Facility: November 10, 2014



Photo 114: Sierra Highway near I-14: November 10, 2014



Photo 115: Sierra Highway near I-14: November 10, 2014



Photo 116: Site Working Area: October 8, 2014



Photo 117: Site Working Area: October 22, 2014



Photo 118: Site Working Area: October 22, 2014



Photo 119: Site Working Area: November 10, 2014



Photo 120: Site Working Area: December 18, 2014



Photo 121: Site Working Area: December 18, 2014

[This page is blank for printing]

Appendix III

Quarterly Site Visits: Site Visit Attendees by Date of Site Visit/ Mitigation Monitoring Site Reports

UltraSystems Staff Fields of Expertise:

| | |
|---------------|--|
| James Aidukas | Project Manager, Permitting and Operations/ Engineer |
| Mike Lindsay | Air Quality, Noise, Vehicle Emissions, Environmental Specialist/ Engineer |
| Jack Emerson | Air Quality, Noise, Hydrology, Hazardous Waste |

SES Staff Fields of Expertise:

| | |
|------------------|---------|
| Tarik Hadj-Hamou | Geology |
|------------------|---------|

October Site Visits

October 8, 2014:

James Aidukas (UltraSystems)

Mike Lindsay (UltraSystems)



**SUNSHINE CANYON LANDFILL
MITIGATION MONITORING SITE REPORT**

| | |
|---|---------------|
| Monitor: James Aidukas | Page: 1 of 2 |
| Discipline: Project Manager | Date: 10/8/14 |
| Site Conditions: Mid-70's, slight wind | |
| SITE LOG | |
| <p>Republic Site Manager - Rob Sherman</p> <p>Met with Mike Lindsay, (UltraSystems). Signed in and received a flashdrive from Peggy which contained the AutoCad file of the 2014 topographic map. We proceeded to monitor the site and observed the following:</p> <ul style="list-style-type: none"> • Basin A had been cleared of all soil that was put in place to block the risers and any other sediment. The native hillside had been cleaned, with wind-blown litter removed. • The excavation west of the offices was ongoing, with a paleontological monitor on-site. Only minor non-recoverable marine-type bone were encountered. • The site working area was a single small and contained area in CC-3A. Portable wind fences were near the working area and ready for use, if needed. • The site's hydroseeded areas appeared to have no germination. • Flare 3 had the site cleared of weeds and dry grass. • The low point of Cell CC-2A that flooded last year was lined and near ready to function as a temporary basin. A portable pump will be used after a rain event. • The new temporary scales appear to be complete and ready for commissioning. • The Old City North area had HDPE gas piping material and wet weather road waste rock and asphalt stockpiled on the top deck. • City Deck C sage mitigation was doing well, with salt bush being the dominant plant. • City Deck B had some natives, along with dense areas of mustard. • City Deck A had areas in the southwest top deck that were adequately covered with mostly native vegetation. • The access road realignment area slopes were being covered with jute netting, and straw wattles and hay bales were also being installed to slow down any water flow from rain. • Three temporary basins were being constructed to retain water ahead of the terminal basin and discharge into it. • A fourth temporary basin was partially constructed to retain water and sediment from the bare hillside closest to San Fernando Road. • The condensate treatment plant had liquids being pumped into a truck and there were localized odors coming from the truck and baker tank at the condensate treatment facility. • The drainage channels were being lined with HDPE in the access road realignment area. • The terminal basin was cleared of sediment and ready for a rain event. The outlet channel had any sediment, litter, and brush removed. The basin's outside wall had all brush, debris, and illegally dumped material removed. • The westside drainage channel cracking and floor uplifting continues to be a problem. Spalling of the concrete walls is worsening. • The material storage area had waste metal being gathered for recycling. Outlet drainage channel D was clear of sediment and ready for a rain event. • The DTE gas-to-energy plant is producing approximately 22 megawatts of power with approximately 18.8 megawatts to sales. The first 6-month plant shutdown and turnaround is scheduled for October 23 and 24. | |

Page 2 of 2, 10/8/14

Flare Operating Conditions:

- Flare 1 - 1695°F, 2135 SCFM, -64.66" H₂O vacuum, 94 °F inlet
- Flare 3 - 1693°F, 2290 SCFM, -67.2 to -72.3" H₂O vacuum, 86 °F inlet
- Flare 9 - 4 SCFM, 90°F, flare down
- Flare 10 - 2 SCFM, 134°F, flare down

Inlet gas to the gas-to-energy plant - 45% methane and 1.93% oxygen.

After the monitoring we met with Larry Bressman and discussed our observations and were provided with the status of site activities. See October meeting log for the record of the discussion.

FURTHER REVIEW NEEDED

COMMENTS

Signed: 



**SUNSHINE CANYON LANDFILL
MITIGATION MONITORING
SITE REPORT**

| | |
|---|----------------------|
| Monitor: Mike Lindsay | Page 1 of 2 |
| Discipline: Environmental Engineer | Date: Wed, 10-08-14 |
| Site Conditions: Clear, sunny, 68-86°F, 0-15 mph | |
| SITE LOG | |
| 1. Met with Dim Aidukas (UltraSystems) and checked into office. Received flashdrive with 2014 SCL Topo AutoCAD File from Peggy (Republic). Rain-for-Rent water tanks have been removed from Admin. pads. | |
| 2. Sediment Basin A has been well-cleaned, ready for the rain season which runs from late October through March. | |
| 3. Excavation work continues for cell development south-west of Admin buildings. A paleo monitor was present. | |
| 4. Observed new lining system installed on Cell CC2A for water drainage control. | |
| 5. Flare 3 is operating at 2286 SCFM, 1698°F. gas sample measured at 36% Vol. CH ₄ , 5.4% Vol. O ₂ , 40 ppm H ₂ S, over 500 ppm CO, and a 132°F supply temp. A BAS worker was using a Landtec GEM 5000 gas analyzer. Flare yard has been mowed for weed maintenance. | |
| 6. New truck scales are completely finished with construction. | |
| 7. Observed City working face with use of tippers. | |
| 8. Old City North Deck (closed landfill area) is being used to stockpile materials. | |
| 9. Water trucks are applying water throughout landfill. | |
| 10. Flare 1 is operating at 2164 SCFM, 1697°F. gas sample measured at 31% Vol. CH ₄ , 4.2% Vol. O ₂ , 98 ppm H ₂ S, 68 ppm CO, and a 129°F supply temp. | |
| 11. Observed overall landfill operations from observation deck. | |
| -FURTHER REVIEW NEEDED- | |
| 12. City Decks A and B were in good order, with vegetation cover over most areas. | |
| 13. City Deck C sage mitigation/vegetation area is in a typical late-summer dormant stage due to the dry winds and high temperatures. | |
| 14. Top bench of Access Road slopes are having jute matting installed, covering all exposed soil. Horizontal straw wattles are installed across slopes. A water truck was applying water throughout construction site. | |
| Project Number: 5800 | Signed: Mike Lindsay |



**SUNSHINE CANYON LANDFILL
MITIGATION MONITORING
SITE REPORT**

| | |
|--|-----------------------------|
| Monitor: Mike Lindsay | Page 2 of 2 |
| Discipline: Environmental Engineer | Date: Wed. 10-08-14 |
| Site Conditions: Clear, sunny, 68-86°F, 0-15 mph | |
| SITE LOG | |
| <p>15. Condensate Treatment Plant (by existing truck scales) had strong odors around facility. A pump truck was removing stored condensate from storage tank, and taking it to lower facility by land fill entrance. This is done 3-4 times per week now, since pipeline is disturbed due to construction work.</p> <p>16. Terminal Sediment Basin is clear of sediment piles, with a line of K-rails extending from vertical drains.</p> <p>17. Westside Drainage has been cleaned out, with soil and weeds removed. Concrete walls and floor are cracking and buckling more near center area.</p> <p>18. BAS pipe storage yard is in good order, with an increase in stockpiled materials. Three 40-yard containers have been delivered for scrap removal.</p> <p>19. Sediment Basin D is in good order. A temp. tarp/cover machine with tarp rolls are being stored here.</p> <p>20. The Gas-to-Energy plant is fully operational. Flares 9 and 10 are off-line. A scheduled shutdown for maintenance and inspection is planned for Oct. 23/24. Met Steve, the third member of the operations team (along with Rich and Travis).</p> <p>21. Met with Larry Bressman (Republic):</p> <p>a. Jim Ardukas delivered a 2001 PM-10 Berm Planting Plan drawing to Larry for their use and records.</p> <p>b. Wet weather pads are being built near City working face; approx. 200 feet by 400 feet wide.</p> | |
| FURTHER REVIEW NEEDED | |
| <p>c. Operations is planning on improving access road design with extra base material so conditions are less harsh for trucks and equipment.</p> <p>d. Operations will place 1-1/2" rock spaced along access roadway for use during slick rain conditions.</p> | |
| | |
| | |
| Project Number: 5800 | Signed: <i>Rich Lindsay</i> |

October 22, 2014:


James Aidukas (UltraSystems)

Mike Lindsay (UltraSystems)

Jack Emerson (UltraSystems)



**SUNSHINE CANYON LANDFILL
MITIGATION MONITORING SITE REPORT**

| | |
|--|----------------|
| Monitor: James Aidukas | Page: 1 of 1 |
| Discipline: Project Manager | Date: 10/22/14 |
| Site Conditions: Clear and sunny, 75-80°F, mild wind gusts | |
| SITE LOG | |
| <p>Republic Site Manager - Rob Sherman</p> <p>Met with Karlo Manalo (LADPW), Mike Lindsay, and Jack Emerson (UltraSystems). Signed in and had a brief discussion with Patti Costa and Larry Bressman. We then proceeded to monitor the site and observed the following:</p> <ul style="list-style-type: none"> • Basin A was completely cleared of any sediment and rock. It appears to have been swept. The native hillsides were having wind-blown litter removed. There was a very small amount present. • The site excavation and grading west of the offices was ongoing. The elevation has been substantially reduced. This excavation and the one ongoing just south of this location should have Republic's geotechnical engineer look at where the inclines of landslides may be located. A paleontological monitor was on-site monitoring these locations. • The condensate treatment facility had strong localized odors coming from the baker tank and the transfer pump truck vent when he was loading condensate to haul to the leachate treatment facility. The transfer pipelines have not yet been replaced. • The 55-gallon drum carbon vent scrubbers at the leachate treatment facility were not eliminating vent odors. Replacements should be investigated. • There was odor noticed coming from the sewer pumping underground vaults. • An enclosure and foundation for the seismic detection recorder was seen at the recycled water facility location. The equipment has not been installed. • Bags of litter and a mattress box spring was seen on Sierra Highway near the I-14 overpass. • Dumped debris was seen south of the landfill entrance in front of and behind the wall at the gas odorization facility. • The southern perimeter oil field gate was closed, but not locked. • Mitigation oak trees adjacent to the access road had die-back and were showing signs of stress from lack of water. The southern irrigation system appears to not be working. • Winterization appears to be near complete. The low point temporary basin in CC-2A has been completely lined. The access road realignment area has all temporary basins in place. The only remaining winterization left to be done is on the steep slope just west of the oil field road entrance. <p>After the monitoring we met with Republic staff and discussed our observations and were provided with the status of site activities. See the October meeting log for the record of the discussion.</p> | |
| FURTHER REVIEW NEEDED | |
| COMMENTS | |
| Signed:  | |



**SUNSHINE CANYON LANDFILL
MITIGATION MONITORING
SITE REPORT**

| | |
|---|-----------------------------|
| Monitor: Mike Lindsay | Page <u>1</u> of <u>2</u> |
| Discipline: Environmental Engineer | Date: <u>Wed. 10-22-14</u> |
| Site Conditions: <u>Clear, sunny, 68-86 °F, 5-20 mph</u> | |
| SITE LOG | |
| <ol style="list-style-type: none"> 1. Met with Karlo Manalo (LACDPW), Jim Andukas, Jack Emerson (UltraSystems), and checked into office, and with Larry Bressman, Patti Costa (Republic). 2. Observed excavation work for cell development southwest of Admin. facility. Peko monitors present. 3. Sediment Basin A is clean of soil build-up. 4. Condensate treatment plant by scalehouse had moderate condensate odors around facility. Pump truck was emptying storage tank (done 2-3 times per week). Odor is strongest near Baker storage tank. 5. Observed condensate pump truck discharging load into lower treatment plant by landfill entrance. 6. Sierra Highway and San Fernando Road near landfill were clear of trash overall; some bags and two shopping carts on shoulder. 7. Observed dumped boards and tire behind 3-foot block wall at natural gas odorizer facility, near entrance. 8. Oil field perimeter gate was closed but not locked (southern access point to landfill). 9. Mitigation trees above oil field are dry on north side of access road; trees are moist on right side. 10. Observed booster pump for fire control water feed to oil field hydrants. 11. Lower wastewater treatment facility by landfill entrance is in good order. 12. Sewer tie-in area by landfill entrance smells of condensate. | |
| FURTHER REVIEW NEEDED | |
| <ol style="list-style-type: none"> 13. Bypass Road slopes by landfill entrance are mostly covered with jute matting and straw wattles for winterization. 14. Gas to Energy plant has three turbines operating today at 10 kW, in preparation for a total shutdown for inspection and testing scheduled for tomorrow. 15. Met with Achynga Kelypanda and Darrell (Republic), and informed them of condensate odors around condensate facility and new sewer lift station by landfill entrance. | |
| Project Number: 5800 | Signed: <u>Mike Lindsay</u> |




**SUNSHINE CANYON LANDFILL
MITIGATION MONITORING
SITE REPORT**

| | |
|---|-----------------------------|
| Monitor: Mike Lindsay | Page 2 of 2 |
| Discipline: Environmental Engineer | Date: Wed. 10-22-14 |
| Site Conditions: Clear, sunny, 68-86°F, 5-20 mph | |
| SITE LOG | |
| 16. Met with Larry Bressman: | |
| a. Odors around sewer lift station will be investigated and resolved. | |
| b. Basins and channels have been inspected this week, and are being "fine-tuned" and checked for cracks, etc. | |
| c. Oil field south gate could use a lock to protect against unauthorized access to landfill. | |
| d. Mitigation trees above oil field on north side of road are dry, and will be checked for irrigation function. | |
| e. Excavation above new scalehouse is cutting near identified slip plane, which Republic is aware of. | |
| | |
| | |
| | |
| | |
| | |
| | |
| | |
| | |
| | |
| | |
| | |
| FURTHER REVIEW NEEDED | |
| 1. Investigate source of condensate odors around condensate treatment plant and at sewer lift station. | |
| 2. Remove trash bags and shopping carts along Sierra Hwy. | |
| 3. Remove dumped boards and tire at natural gas odorization facility by landfill entrance. | |
| 4. Install a Republic padlock at south oil field gate. | |
| 5. Repair irrigation system at north-side mitigation trees above oil field. | |
| | |
| Project Number: 5800 | Signed: <i>Mike Lindsay</i> |



**SUNSHINE CANYON LANDFILL
MITIGATION MONITORING SITE REPORT**

| | |
|--|----------------|
| Monitor: Jack Emerson | Page: 1 of 1 |
| Discipline: Hydrology and Hazardous Materials | Date: 10/22/14 |
| Site Conditions: Site, ~80°F, Moderate Wind | |
| SITE LOG | |
| <p>Signed in at front desk at 9:40 AM and met with Mike Lindsay (UltraSystems), Jim Aidukas (UltraSystems), Karlo Manalo (LACDPW), Patti Costa (Republic), Larry Bressman (Republic).</p> <p>Observed:</p> <ul style="list-style-type: none"> • Grading occurring west of offices. • Fine dirt is being removed from drainage basin A. • Odor by the condensate treatment plant possibly because it was being transferred to a truck for offsite disposal. • Odor by the leachate plant treatment plant possibly because it was being transferred to a truck for offsite disposal. • Wood debris is hidden behind a wall near the Gas Odorization Facility • Trash near Sierra Highway has been collected and is sitting in trash bags near the road; a box spring has not been collected. • Gas-to-Energy Facility intake is 46% methane, and operating with 3 turbines to produce 10 MW. • Plant operator stated that the plant will be taken offline on 10/23/14 for maintenance. | |
| COMMENTS | |
| <p>During a meeting with Republic:</p> <ul style="list-style-type: none"> • Grading west of offices is part of preparation for rain events. Republic has verified geologic stability. • Area west of the offices will be fully cut out next year for use as a working area. • All basins are being cleaned so that cracks may be identified and sealed. • Trash along Sierra Highway is bagged then collected. Bagging is complete, collection is ongoing. • UltraSystems requested that Republic install a lock on the Oil field western gate. • UltraSystems requested that Republic increase irrigation to southern oak mitigation area. • Republic is draining leachate and condensate, and intends to perform additional work to identify potential sources of odor upon completion. | |
| <p align="right">Signed: </p> | |

November Site Visits

November 10, 2014:

James Aidukas (UltraSystems)

Mike Lindsay (UltraSystems)



**SUNSHINE CANYON LANDFILL
MITIGATION MONITORING SITE REPORT**

| | |
|--|----------------|
| Monitor: James Aidukas | Page: 1 of 2 |
| Discipline: Project Manager | Date: 11/10/14 |
| Site Conditions: Partly cloudy, 65°- 70°F, mild wind | |
| SITE LOG | |
| <p>Republic Site Manager - Rob Sherman</p> <p>Met with David Nguyen (LACDPW), Mike Lindsay, and Tarik Hadj-Hamou, (UltraSystems). Signed in and briefly met with Patti Costa. The monitoring team proceeded to monitor the site and observed the following:</p> <ul style="list-style-type: none"> • The new scale facilities were in operation and transfer trucks were being diverted to use these scales. • The condensate treatment facility process was being modified to allow for higher liquid levels in the process tanks and to allow for higher vapor pressure liquids. Darrell (Republic Staff) and Alon Lebel (Invirotrex) indicated that the constituents of the condensate has changed now that the gas-to-energy plant was operating. • Three soil bottom cascading basins were installed below the condensate treatment facility to handle water and sediment from the westside drainage system and the slopes from the access road realignment work. The water discharge from these basins flow into the terminal basin. The v-ditches to the basins were HDPE-lined and down flow channels were lined with rock. Two of the basins had standing water from prior rains and were being pumped. Minor erosion occurred to the inlet to the first basin during the last storm. • The terminal basin was cleared of sediment and ready for rain events. • The access road realignment slopes were wintered with jute netting, straw wattles and straw bales. A dirt bottom basin was installed to collect water and sediment downstream of the terminal basin inlet. The effectiveness of this run-off BMP device should be monitored at the next site visit. • There are two slopes near the oil field road that are void of vegetation due to grading and are not winterized. These slopes should be observed during the next monitoring visit. • Condensate and other facility HDPE piping was elevated out of the drainage v-ditch. • The hold-down straps on the leachate facilities' tanks were loose and should be checked to meet earthquake requirements. • The carbon 55-gallon drums at the leachate treatment and sewer connection locations were replaced with new carbon drums. • The wastewater sewerline equipment was operational with no observed problems. Equipment vault covers were sealed with an orange rubberized caulking. • Drove into the Granada Hills neighborhood and did not observe any wind-blown litter nor any landfill odors. • There was illegal dumping of a mattress box spring and bags of trash on Sierra Highway near the I-14 overpass • Piles of rock and rubble was seen on San Fernando Road south of the Old Road. • Hydroseeded areas had no sign of germination. • Basin A had standing water and some sediment. | |

Page 2 of 2, 11/10/14

- The westside drainage channel was clear of all vegetation and soil. Repairs to the broken concrete were not made to date.
- Numerous storage bins and waste recyclable materials have been removed from the material storage area.
- A portion of the north drainage below the gas-to-energy facility is blocked with soil and wind-blown vegetation.
- Basin B had standing water and a minor amount of sediment.
- Disposal operations were confined to a small area in cell CC-3A.

FURTHER REVIEW NEEDED

1. Monitor BMP for effectiveness and areas that were not winterized.
2. Monitor illegal dumping and litter on public roadways.
3. Monitor condensate and leachate treatment facilities.

COMMENTS

Signed: 



**SUNSHINE CANYON LANDFILL
MITIGATION MONITORING
SITE REPORT**

| | |
|--|-------------------------------|
| Monitor: Mike Lindsay | Page <u>1</u> of <u>3</u> |
| Discipline: Environmental Engineer | Date: <u>Monday, 11-10-14</u> |
| Site Conditions: <u>Partly cloudy, 59-72°F, 5-15 mph</u> | |
| SITE LOG | |
| <ol style="list-style-type: none"> 1. Met with Dave Nguyen (LACDPW), Aim Aidukas, Tarik Hadj-Hamou (UltraSystems), and checked in to office and with Patti Costa (Republic). 2. Observed new scale house in operation. 3. Met with Darrell at condensate treatment facility by old scale house. Also talked with Alon Abel (Invirotech) about condensate analysis results and Gas-to-Energy plant sump pump. 4. Observed Bypass Access Road slopes and new sediment basins. Standing water is now present in two of these sedi. basins. 5. Leachate treatment plant by landfill entrance has storage tanks with loose earthquake cable straps. 6. Sewerline tie-in by landfill entrance had condensate-like odors. Observed new sealing grout on one of the ground access plates. 7. Air pipe deodorizer system by landfill entrance was working well. 8. Observed trash bags and a box spring dumped along San Fernando Road and Sierra Highway. 9. Observed no odors throughout surrounding neighborhood and Van Gogh Elementary School. 10. Excavation work for new cell development south of Admin. Facility is progressing, with paleo monitor present. 11. Sediment Basin A is in good order, with three inches of standing water around two vertical drains (from rain event last week). | |
| FURTHER REVIEW NEEDED | |
| <ol style="list-style-type: none"> 1. Repair loose earthquake cable straps on storage tanks at leachate treatment plant. 2. Remove dumped debris along San Fernando Road and Sierra Hwy. | |
| | |
| | |
| | |
| | |
| | |
| Project Number: 5800 | Signed: <u>Mike Lindsay</u> |



**SUNSHINE CANYON LANDFILL
MITIGATION MONITORING
SITE REPORT**

| | |
|---|-------------------------------|
| Monitor: Mike Lindsay | Page 2 of 3 |
| Discipline: Environmental Engineer | Date: Monday, 11-10-14 |
| Site Conditions: Partly cloudy, 59-72°F, 5-15 mph | |
| SITE LOG | |
| 12. Westside drainage is in good, clean order. Cracks and up-lifting concrete need repair. | |
| 13. BAS Pipe had been reconfigured, graded, and many of the storage containers have been removed. | |
| 14. The Gas-to-Energy plant shutdown and inspection went well. No siloxane buildup, per Travis (Operations). | |
| 15. Flare 9 was off line. | |
| 16. Flare 10 is operating at 2310 SCFM, 1654°F; gas sample measured at 37% Vol. CH ₄ , 5.6% Vol. O ₂ , 65 ppm H ₂ S, 441 ppm CO and outlet pressure at 40 in. WC. Blowers 2, 3 and 4 are in operation. | |
| 17. Sediment Basin B is in good, clean order. Smelled landfill gas odor around Sediment Basin B and old Temp Flare. | |
| 18. City North Deck is being used to stockpile broken asphalt and other materials. | |
| 19. Terminal Sediment Basin is in good order, with K-rails and rock berms in-place. | |
| 20. Met with Larry Bressman, Patti Costa (Republic): | |
| a. Wet-weather material is in-place around landfill. | |
| b. Slip-and-slide above fireroad to City Deck C terminates at a K-rail water diverter, then water drains down asphalt fireroad to access road channel. | |
| c. The new basins below the Bypass Access Road slopes will be fortified further with rocks. | |
| d. We smelled gas odors near Well 813 along Access Road and near sewer lift stations. Republic will investigate odors. | |
| FURTHER REVIEW NEEDED | |
| 3. Repair Westside Drainage concrete cracks and up-lifting. | |
| | |
| | |
| | |
| | |
| | |
| | |
| | |
| | |
| | |
| Project Number: 5800 | Signed: <i>Mike Lindsay</i> |

| | |
|---|------------------------|
| Monitor: Mike Lindsay | Page 3 of 3 |
| Discipline: Environmental Engineer | Date: Monday, 11-10-14 |
| Site Conditions: Partly cloudy, 59-72°F, 5-15 mph | |
| SITE LOG | |
| <p>e. Trash bags and box spring will be removed along I-14 overpass.</p> <p>f. Rock and soil dumping along San Fernando Road is likely the City of Los Angeles' responsibility.</p> <p>g. Condensate treatment facility smelled of condensate odors. Alon and Darrell are working on system currently.</p> <p>h. In surrounding neighborhood at Constable and Golden Valley there was a natural gas pipeline leak in the street causing strong odors.</p> | |
| FURTHER REVIEW NEEDED | |
| <p>Project Number: 5800</p> <p>Signed: Mike Lindsay</p> | |

December Site Visits

December 18, 2014:

James Aidukas (UltraSystems)

Mike Lindsay (UltraSystems)



**SUNSHINE CANYON LANDFILL
MITIGATION MONITORING SITE REPORT**

| | |
|---|----------------|
| Monitor: James Aidukas | Page: 1 of 2 |
| Discipline: Project Manager | Date: 12/18/14 |
| Site Conditions: 55-60°F, mild wind | |
| SITE LOG | |
| <p>Republic Site Manager - Rob Sherman</p> <p>Met with Mike Lindsay, (UltraSystems). Signed in and had a brief conversation with Larry Bressman, Site Division Manager.</p> <p>Prior to arriving at the site, I drove the roads adjacent to the landfill and in the adjacent Granada Hills neighborhood. No windblown litter was observed in the neighborhood. San Fernando Road and Balboa Boulevard were free of litter. I did observe that adjacent to San Fernando Road south of the Old Road junction, illegal dumping of rock and rubble was being done. This area is outside of the required landfill clean-up area but the City of Los Angeles needs their clean-up crews to remove this material. It has been increasing in size over time.</p> <p>Mike Lindsay and I proceeded to monitor the site and observed the following:</p> <ul style="list-style-type: none"> • Basin A had approximately 2" of sediment in the front portion of the basin with 3"-4" of standing water near the outlet standpipes. Tracks of an adult mountain lion and a cub were observed in the wet sediment. • The westside channel where we previously observed lifting in the center of floor has worsened. It was observed that water from a concrete v-ditch in the County sage area was flowing under the westside concrete sidewall near the P-243 monitoring well. • The westside drainage concrete sidewall cracks were grouted at the location where trees adjacent to the channel were removed. • Basin D was free of sediment build-up and had no standing water. • The material storage area had more storage containers removed. The recyclable material had been hauled away and the area was clean and well organized. • Basin D outlet drainage channel was clean and free of sediment and debris. • The County sage area had greened-up from the recent rains. Additional vegetation had grown in some areas. • The eastside drainage inlet channel to Basin B just south of the Edison facility was blocked with waste plywood and other debris. • Basin B had sediment from the adjacent hillsides in the back portion of the basin. The basin also had approximately 4" of sediment in the front portion of the basin with approximately 6" of standing water. • The gas-to-energy facility operations manager stated that he was planning for a 2-day Edison outage. • The terminal basin has sediment and standing water in the front portion of the basin near the outlet stand pipes. • The County scales lost internet communication and were handling checking in trucks manually. This resulted in a long line of disposal vehicles all the way to the entrance. • The winterization of the access road realignment area functioned well. There was no uncontrolled sediment and water release noted. The temporary basins perform well. The first basin below the condensate treatment facility had substantial erosion and was modified. | |

Page 2 of 2, 12/18/14

- Deck C sage mitigation was doing well. Salt bush continues to be the primary plant species.
- The odorizer system along the Old City South berm was working and a light flowery smell was noted only when we were within a foot or two of the pipe.
- Illegally dumped tires, a box spring, and trash was noted on Sierra Highway near the I-4 overpass.
- Earthmoving equipment parked on the County top deck had no oil drip pans being used..

Flare Operating Conditions:

- Flare 1 - 1700°F, 3871 SCFM, -65.21" H₂O vacuum, 78 °F inlet
- Flare 3 - not operating
- Flare 9 - not operating
- Flare 10 - 1651°F, 1737 SCFM, -61" H₂O vacuum, 40" H₂O outlet; three blowers running, 47% methane, 0.66% O₂

After the monitoring we met with Patti Costa and discussed our observations and were provided with the status of site activities. See December meeting log for the record of the discussion.

FURTHER REVIEW NEEDED

1. Monitor status of westside drainage concrete conditions.
2. Notify City street maintenance of illegal dumping on San Fernando Road.

COMMENTS

Signed: 



UltraSystems

**SUNSHINE CANYON LANDFILL
MITIGATION MONITORING
SITE REPORT**

| | |
|---|-----------------------|
| Monitor: Mike Lindsay | Page 1 of 3 |
| Discipline: Environmental Engineer | Date: Thurs. 12-18-14 |
| Site Conditions: Partly sunny, 52-62°F, calm winds, rain on Wed. | |
| SITE LOG | |
| 1. Met with Jim Aidukas (UltraSystems) and checked into office and with Larry Bressman (Republic). | |
| 2. Sediment Basin A has 2" mud with 3" of water near drains (it rained the night before). | |
| 3. Westside drainage is in good condition overall. Buckling of concrete floor has increased, possibly due to hydrolic soil movement or hydrolic pressure under concrete channels. | |
| 4. Westside Drainage wall cracks have been grouted, originally caused by tree roots. | |
| 5. County sage mitigation area is not showing signs of green grass growth, even with the rains. | |
| 6. Sediment Basin D is in good condition with no standing water. | |
| 7. Observed Sediment Basin D Drainage (north drainage) to be independent. | |
| 8. Debris (plywood, tar paper vegetation) is blocking upstream north drainage road crossover culverts. | |
| 9. Sediment Basin B is overall clear, with 4" of standing water and 6" of sediment around vertical drains/basins. | |
| 10. Observed haul trucks lining up from scales to San Fernando Road due to AT&T work/outage causing scale system to be offline. | |
| 11. City Deck C Sage mitigation area is showing new growth from recent rains. Salt and Quail Bush dominate the habitat. | |
| 12. Observed deodorizer system piping along PM-10 Berm south of top ridgeline. Perforated holes are blowing out a gas that smells slightly flammable. | |
| FURTHER REVIEW NEEDED | |
| 1. Repair Westside Drainage concrete upsttings. | |
| 2. Remove debris from north drainage culverts. | |
| | |
| | |
| | |
| | |
| Project Number: 5800 | Signed: Mike Lindsay |

| | | |
|---|-------------|----------|
| Monitor: Mike Lindsay | Page 2 | of 3 |
| Discipline: Environmental Engineer | Date: Thurs | 12-18-14 |
| Site Conditions: Partly cloudy, 52-62°F, calm winds, rain on Wed. | | |
| SITE LOG | | |
| <p>13. Flare 1 is operating at 3871 SCFM, 1700 °F, gas sample measured at 31% Vol. CH₄, 6.3% Vol. O₂, 68 ppm H₂S, 168 ppm CO, at 132°F. Blower #2 operating.</p> <p>14. Observed tires, box spring and trash bags along San Fernando Road.</p> <p>15. Terminal Sediment Basin is in good condition, with water and some sediment collecting around drains.</p> <p>16. Bypass Access Road slopes held up well after rains. Pump is removing water from sediment basin.</p> <p>17. Leachate treatment plant by old scale house has moderate odors around facility.</p> <p>18. Flare 10 is operating at 39% Vol. CH₄ (display shows 47% Vol.), 53% Vol. O₂, 74 ppm H₂S, 434 ppm CO; 1703 SCFM, 1649 °F; Blowers 1, 2, 3 operating.</p> <p>19. Gas-to-Energy plant - Rich is planning for an Edison planned 2-day outage.</p> <p>20. Met with Patti Costa (Republic) and discussed the following topics:</p> <ul style="list-style-type: none"> a. County sage mitigation hillside drainage V-ditch is not aligned with Westside Draining Channel. <ul style="list-style-type: none"> • Patti will have it repaired. b. Additional rock and rubble on San Fernando Road past under pass is growing bigger. <ul style="list-style-type: none"> • Have the LEA contact the City for removal. c. Tires, box spring and trash is along San Fernando Road. <ul style="list-style-type: none"> • Patti will have it removed. d. No drip pans were observed under scrapers, etc. along access road. <ul style="list-style-type: none"> • Patti will notify Sufut Construction. | | |
| FURTHER REVIEW NEEDED | | |
| 3. Remove debris along San Fernando Road. | | |
| Project Number: 5800 | | |
| Signed: <i>Mike Lindsay</i> | | |



**SUNSHINE CANYON LANDFILL
MITIGATION MONITORING
SITE REPORT**

| | |
|---|-----------------------------|
| Monitor: Mike Lindsay | Page 3 of 3 |
| Discipline: Environmental Engineer | Date: Thurs 12-18-14 |
| Site Conditions: Partly Cloudy, 52-62°F, calm winds, rain on Wed. | |
| SITE LOG | |
| <p>e. Drainage to Sediment Basin B needs culverts cleared of debris after rains.</p> <ul style="list-style-type: none"> • Patti is having all the silt fencing, drainage, etc. inspected and cleaned. <p>f. Observed large erosion-caused hole below leachate treatment plant.</p> <ul style="list-style-type: none"> • Patti is aware of situation and water is flowing down and away from higher ground and roadway, so it is not a problem. <p>g. Chatsworth mitigation site agreement has been responded to with comments by the Corp, and is moving forward.</p> | |
| | |
| FURTHER REVIEW NEEDED | |
| | |
| Project Number: 5800 | Signed: <i>Mike Lindsay</i> |

[This page is blank for printing]

Appendix IV

Meeting Logs

Sunshine Canyon Landfill

Meeting Logs for October 2014 Site Monitoring

October 8, 2014

Post-monitoring meeting with Larry Bressman, Republic's Division Manager

Attendees:

James Aidukas, UltraSystems

Mike Lindsay, UltraSystems

Discussion:

We had a post-monitoring meeting with Republic and provided them with our monitoring observations. We asked questions on site activities and mitigation status, and received comments and updates as follows:

- We provided Republic with a copy of the 2001 PM-10 Berm Planting Plan drawing for their use and records.
- Jim Aidukas asked what the status of the landfill's winter preparedness was.
 - Larry Bressman stated that wet weather pads were being built near the City working face, approximately 200 feet across by 400 feet wide.
- Jim Aidukas stated that the landfill access roads were generally in good condition.
 - Larry Bressman stated that Operations is planning on improving the access roads further with extra base material so conditions are less harsh for haul trucks and equipment.
 - Also, Operations will place 1-1/2-inch rock spaced along the access roadway for use during slick rain conditions.

The meeting was then adjourned.

October 22, 2014

Post-monitoring meeting with Larry Bressman, Republic's Division Manager

Attendees:

Karlo Manalo, LACDPW
James Aidukas, UltraSystems
Mike Lindsay, UltraSystems
Jack Emerson, UltraSystems

Discussion:

We had a post-monitoring meeting with Republic and provided them with our monitoring observations. We asked questions on site activities and mitigation status, and received comments and updates as follows:

- Jim Aidukas stated that there were condensate odors around the new sewer lift station.
 - Larry Bressman stated that they will have the lift station odors investigated and resolved.
- Jim Aidukas stated that the sediment basins and channels were in good condition.
 - Larry Bressman stated that they have been inspected this week, and are being “fine-tuned” and checked for cracks.
- Jim Aidukas stated that the oil field south gate could use a lock to protect against unauthorized access to the landfill.
 - Larry Bressman stated that they would investigate the unlocked gate issue.
- We informed Republic that the oak mitigation trees off the oil field access road had approximately 50% of the trees showing signs of distress due to a lack of water (die-back and wilting). It appeared that the northeast side of the irrigation system was not working.
 - Larry Bressman said that they would investigate the cause of the distress on the trees and make any repairs.
- Jim Aidukas stated that the excavation above the new scale house is cutting near an identified slip plane.
 - Larry Bressman said that Republic is aware of the slip plane and its proximity to the excavation work.

The meeting was then adjourned.

Sunshine Canyon Landfill

Meeting Log for November 2014 Site Monitoring

November 10, 2014

Post-monitoring meeting with Larry Bressman, Republic's Division Manager and Patti Costa, Republic's Environmental Manager

Attendees:

Dave Nguyen, LACDPW
James Aidukas, UltraSystems
Mike Lindsay, UltraSystems
Tarik Hadj-Hamou, SLR

Discussion:

We had a post-monitoring meeting with Republic and provided them with our monitoring observations. We asked questions on site activities and mitigation status, and received comments and updates as follows:

- Jim Aidukas asked what the status of the landfill's winter preparedness was.
 - Larry Bressman stated that wet weather material is in-place around the landfill.
- Jim Aidukas stated that the slip-and-slide above the fire road to City Deck C terminates at a K-rail.
 - Larry Bressman stated that the K-rail is a water diverter; the water then drains down the asphalt fire road to the access road channel.
- Jim Aidukas asked about the status of the new basins below the Bypass Access Road.
 - Larry Bressman stated that they will be fortified further with rock.
- Jim Aidukas stated that there were gas odors near Well 813 along the access road and around the new sewer lift station.
 - Larry Bressman stated that they will have these odors investigated and resolved.
- Jim Aidukas stated that there were trash bags and a box spring dumped along the I-14 overpass.
 - Larry Bressman stated that they will have this debris removed.
- Jim Aidukas stated that there was rock and soil dumped along San Fernando Road.
 - Larry Bressman stated that the City of Los Angeles is responsible for that section of road.
- Jim Aidukas stated that there was condensate odors at the condensate treatment facility.
 - Larry Bressman stated that Alon Abel (Invirotrete) and Darrell are working on the system currently.
- Jim Aidukas asked about the purported gas leak in the surrounding neighborhood.
 - Larry Bressman stated that at Constable and Golden Valley there was a natural gas pipeline leak in the street that caused strong odors.

The meeting was then adjourned.

Sunshine Canyon Landfill

Meeting Log for December 2014 Site Monitoring

December 18, 2014

Post-monitoring meeting with Patti Costa, Republic's Environmental Manager

Attendees:

James Aidukas, UltraSystems
Mike Lindsay, UltraSystems

Discussion:

We had a post-monitoring meeting with Republic and provided them with our monitoring observations. We asked questions on site activities and mitigation status, and received comments and updates as follows:

- Jim Aidukas stated that the County sage mitigation hillside drainage V-ditch is not aligned with the Westside Drainage Channel.
 - Patti Costa stated that they will have it repaired.
- Jim Aidukas stated that additional rock and rubble on San Fernando Road past the underpass is growing bigger.
 - Patti Costa will ask the LEA to notify the City of Los Angeles, who is responsible for that section of road.
- Jim Aidukas stated that there were trash bags and a box spring dumped along the I-14 overpass.
 - Patti Costa stated that they will have this debris removed.
- Jim Aidukas stated that no drip pans were observed under scrapers, etc. along access road.
 - Patti Costa stated she will notify Sukut Construction to correct the situation.
- Jim Aidukas stated that drainage to Sediment Basin B needs culverts cleared of debris after rains.
 - Patti Costa stated that they are having all the silt fencing, drainage, etc. inspected and cleaned.
- Jim Aidukas stated that there is a large erosion-caused hole below the leachate treatment plant.
 - Patti Costa stated that they are aware of the situation, and that water is flowing down and away from higher ground and roadway, so it is not a problem.
- Jim Aidukas asked about the status of the Chatsworth mitigation area.
 - Patti Costa stated that the Chatsworth mitigation site agreement has been responded to with comments by the Corp, and is moving forward.

The meeting was then adjourned.