

DRAFT GENERAL PLAN LAND USE DESIGNATION MAP
Canoga Park - Winnetka - Woodland Hills - West Hills



GENERAL PLAN DESIGNATION

- Regional Center
- Community Center
- Villages
- Neighborhood Center
- Medium Neighborhood Residential
- Medium Residential
- Low Neighborhood Residential
- Low Medium Residential
- Low Residential
- Very Low Residential
- Minimum Residential
- Light Industrial
- Open Space
- Public Facilities
- Public Facilities - Freeway

FAR BASE | BONUS

- | --
- 1.5 | 3-5
- 1.5 | 3
- 1.5 | 3
- 1.5 | 3
- 1.5 | 3
- Graduated | --
- Graduated | --
- 0.45 | --
- 0.25-0.40 | --
- 0.1-0.35 | --
- 1.5 | 0-3
- 0.1 | --
- 1.5-3 | --
- | --

HEIGHT BASE | BONUS

- | --
- 3 stories | 5-8 stories
- 3 stories | 5 stories
- 3 stories | 5 stories
- 3 stories | 5 stories
- 3 stories | 5 stories
- 3 stories | --
- 3 stories | --
- 36' | --
- 36' | --
- 36' | --
- | --
- 36' | --
- | --
- | --

USE

- 
- Commercial Mix Auto Service, Community Center
- Neighborhood Center, Community Center
- Neighborhood Center
- Mixed-Use Neighborhood
- Residential Limited
- Small Shop Neighborhood
- Residential Limited
- Residential Limited
- Residential Agriculture, Residential Limited
- Residential Limited, Agriculture
- Light Industrial Sensitive, Light Industrial Preserve
- Agriculture, Open Space
- Public Facilities Restrictive, Public Facilities Permissive
- 

CORRESPONDING

DENSITY

- 
- 4
- 4
- 4
- 8
- 8
- 4L
- 4L
- 1L
- 1L
- 1L, 1/2.5 acres
- NA
- 1/2.5 acres, NA
- FA
- 

SPECIAL DISTRICT

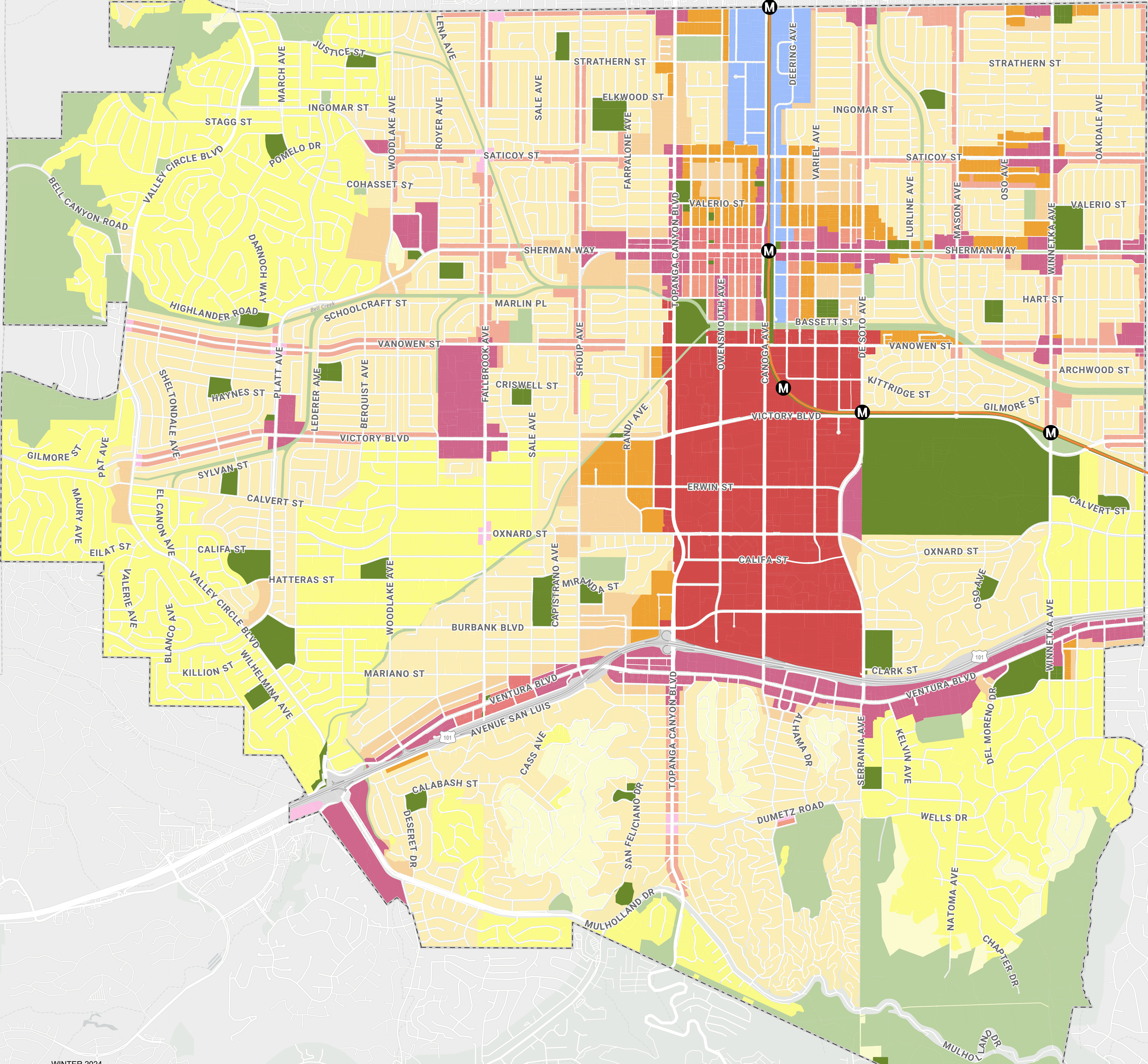
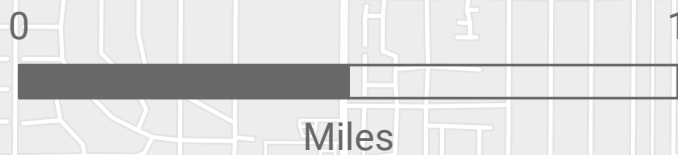
- Warner Center Specific Plan
- 
- 
- 
- 
- 
- 
- 
- 
- 
- 
- 
- 
- 
- FWY

TRANSPORTATION

- Metro Stations
- Metro Lines

PLAN BOUNDARIES

- Community Plan Area



WINTER 2024
Disclaimer:
The City of Los Angeles is neither responsible nor liable for any inaccuracies, errors, or omissions with respect to the material contained on this map. This map and all materials contained on it are distributed and transmitted "as is" without warranties of any kind, either express or implied, including without limitations, warranties of title or implied warranties of merchantability or fitness for a particular purpose. The City of Los Angeles is not responsible for any special, indirect, incidental, or consequential damages that may arise from the use of or the inability to use, the map and/or the materials contained on the map, whether the materials contained on the map are provided by the City of Los Angeles, or a third party.