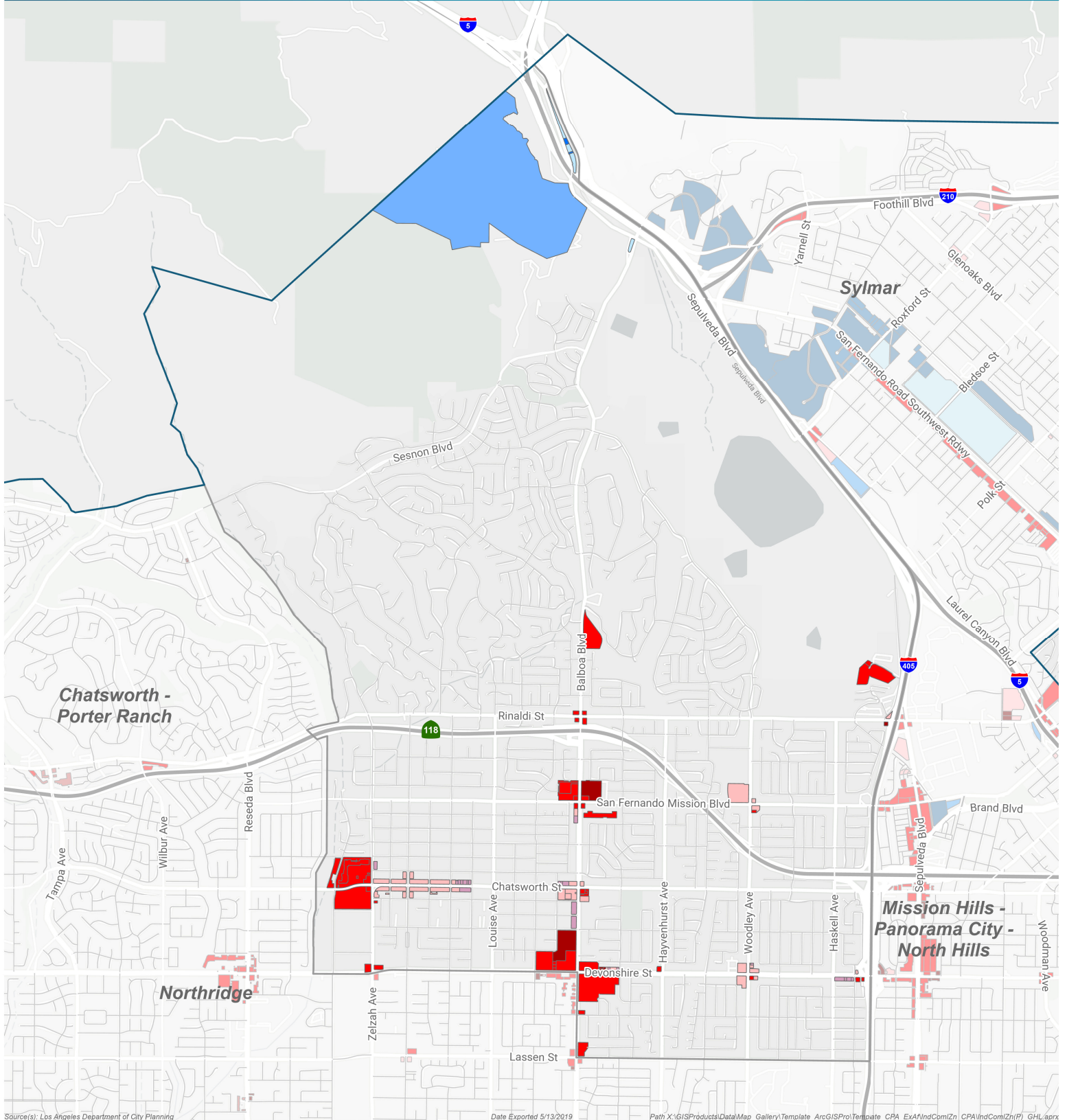


# Commercial & Industrial Zoning

## Granada Hills - Knollwood Community Plan Area



Source(s): Los Angeles Department of City Planning

Date Exported 5/13/2019

Path X:\GISProducts\Data\Map\_Gallery\Template\_ArcGISPro\Template\_CPA\_Ext\IndCom\Zn\_LCPA\IndCom\Zn(IP)\_GHL.aprx

<b>Commercial</b>	CR; CR(PKM)	<b>Industrial</b>	Community Plan Boundary
C1; C1(PV)		M(PV); M1	City Boundary
C2; C2(PV)		M3	
C4; C4(OX)		MR1	

