

**Sunshine Canyon Landfill
Independent Monitor
Quarterly Site Monitoring Status Report
January 1, 2015 – March 31, 2015**

Prepared For:

City of Los Angeles Department of City Planning

And

County of Los Angeles Department of Regional Planning



Prepared By:



16431 Scientific Way
Irvine, California 92618

Prepared On:

July 31, 2015

[This page is blank for printing]



UltraSystems
environmental | management | planning

CERTIFICATION STATEMENT

July 31, 2015

The attached Quarterly Site Monitoring Status Report for the Sunshine Canyon Landfill dated July 31, 2015 is the First Quarterly Report for 2015, issued by UltraSystems. This report covers the monitoring period from January 1, 2015 through March 31, 2015 and is prepared for the City of Los Angeles Department of City Planning and the County of Los Angeles Department of Regional Planning.

I, James T. Aidukas, Project Manager for the Mitigation Monitoring Services of the Sunshine Canyon Landfill, certify that the statements in this Quarterly Report and the referenced monthly reports reflect the site conditions observed and compliance status noted by me and other qualified experts during the stated site visits.

Signed,

James T. Aidukas

Project Manager

[This page is blank for printing]

Contents

Quarterly Status Report	1
Site Visits During the Quarter	2
Definition of Terms	2
Status Summary	2
Compliant.....	2
Non-Compliant.....	3
Further Review Needed	3
Summary of Requested Documents	18
Conclusions	18

Sunshine Canyon Landfill Mitigation Monitoring – 2015 First Quarter Summary/ City
(see Excel spreadsheets)

Sunshine Canyon Landfill Mitigation Monitoring – 2015 First Quarter Summary/ County
(see Excel spreadsheets)

Appendices

Appendix I – Excel Summary Further Review Needed Comments Reference I-a through I-d

Appendix II – Photo Location Map and Relevant Site Photos

Appendix III – Quarterly Site Visits

Attendees by Date and Monitoring Site Reports

Appendix IV – Meeting Logs

[This page is blank for printing]

Quarterly Status Report

This Quarterly Status Report is a compilation of the period's monthly Site Monitoring. After each site visit, the UltraSystems monitors who went to the Sunshine Canyon Landfill site each wrote a Mitigation Monitoring Site Report, updated the Mitigation Monitoring Summary Excel Tables for the City and County of Los Angeles noting any conditions and/or mitigation measures that need further review, and documented these areas in an appendix for that site visit date. Any issues that required immediate attention were reported to Republic staff and the appropriate staff at the City of Los Angeles Planning Department, the County of Los Angeles Department of Regional Planning, the County of Los Angeles Department of Public Works and the Sunshine Canyon Landfill Local Enforcement Agency (SCL-LEA).

The Sunshine Canyon Landfill City and County Summary Tables record each site visit and frequency of monitoring of specific conditions and/or mitigation measures, by date. When a condition and/or mitigation measure is monitored, a check mark is made under the date that it was monitored, and the status of being compliant with the conditions and/or mitigation measures' requirements observed during monitoring is recorded. Tasks with a yearly or non-ongoing monitoring frequency are denoted by a forward slash (/) in subsequent date columns. In the status column, the letter "C" is put next to the task if it is Compliant; the letters "NC" are noted if the task status is Non-Compliant; and the letters "FRN" are used if Further Review is Needed for meeting the requirements of the conditions and/or mitigation measures.

Under the Further Review Needed/ Comment column, observed conditions that have been noted as "FRN" in the status column refer to appendices which detail what was observed during the site monitoring. When the conditions and/or mitigation measures that were previously noted as "FRN" are fully compliant, an "R" is placed in the Resolved column and a "C" replaces the "FRN" in the status column. Also noted in the FRN-Comment column are those action items that would improve monitoring efficiency by having reports and documents readily available. These are summarized in the Compliant with Comments section of the monthly monitoring records and the Summary of Requested Documents of the Quarterly Reports. The City and County Excel Spreadsheets record the site conditions observed during monitoring.

This Quarterly Report provides the City of Los Angeles Department of Planning and the County of Los Angeles Department of Regional Planning with a concise status of the Mitigation Measure Monitoring for the period of January 1, 2015 to March 31, 2015. It includes:

1. The City and County Mitigation Monitoring Summary Excel Tables for January 1, 2015 to March 31, 2015. These tables record the areas of monitoring completed and the status of being compliant during the first quarter of 2015;
2. A Status Summary of Non-Compliant, Further Review Needed and Compliant with the requirements of the conditions and/or mitigation measures;
3. Photo Location Map and Relevant Site Photos showing site conditions of key areas of the landfill during the quarter;
4. Site visit attendees by date of site visit and the mitigation monitoring report for each monitor;

5. Meeting logs documenting any meetings with Republic Services staff and/or public agencies and the topics discussed; and
6. Any site monitoring documenting site changes.

Site Visits During the Quarter

Four site visits were performed by UltraSystems during the January through March 2015 quarter in order to observe operational site activities and determine compliant status with conditions and/or mitigation measures. They were performed on January 7, 2015; February 13, 2015; February 26, 2015; and March 24, 2015. The previously discussed conditions and/or mitigation measures were tracked by each specialist who visited, and observations were documented. Site conditions were noted to be: Compliant, Non-Compliant, or Further Review Needed. If a Condition was found to be Non-Compliant or observed as having Further Review Needed, a reference was made to an appendix which details what was observed by the monitor.

Definition of Terms

Compliant is defined as complying with the City and County conditions and/or mitigation measures.

Non-compliant is defined as not complying with the City and County conditions and/or mitigation measures.

Further Review Needed is defined as implementing plans (agency-approved, if required) to fully comply with a condition and/or mitigation measure. Some plans, especially vegetation, require an extended time frame, and immediate compliance is not possible.

Further Review Needed/ Comments is defined as comments documenting site conditions observed during monitoring visits that are not fully compliant but action is being taken in order to obtain full compliance with conditions and/or mitigation measures. Recommendations from the monitor, as appropriate, and status from Republic Services (Republic) may also be given. The Comments section of the monthly monitoring report also provides a summary of activities being done on-site to construct or maintain facilities and a summary of documents, reports and drawings that should be readily available onsite for monitoring reference.

Resolved is defined as action taken or activities completed to fully comply with conditions and/or mitigation measures.

Status Summary

This section summarizes the conditions and/or mitigation measures that were monitored during this quarterly reporting period and their respective statuses. The Sunshine Canyon Mitigation Monitoring Spreadsheets for the City and County show the conditions and/or mitigation measures monitored during this quarter. Also included in this report are relevant photos in Appendix II.

Compliant

The majority of the conditions and/or mitigation measures monitored were observed to be compliant. There are City and County conditions which are compliant, but are noted as

having corresponding comments that refer to the appendices. The Compliant with Comments section of the monthly monitoring report provides a summary of activities being done on-site to construct or maintain facilities and a summary of documents, reports and drawings that should be readily available onsite for monitoring reference.

Non-Compliant

During UltraSystems' four site visits, no Non-Compliant conditions and/or mitigation measures were noted. Also, it must be understood that any monitoring related to landfill gas and odors are not part of the UltraSystems Monitoring Program at this time. These issues are currently being handled by a multi-agency team, which is led by the South Coast Air Quality Management District (SCAQMD).

Further Review Needed

The following conditions and/or mitigation measures were found not to be fully compliant, but were being worked on in order to obtain full compliance. This section summarizes the progress being made toward being fully compliant. When a condition and/or mitigation measure progresses from FRN to fully compliant, it is noted as Resolved in this section.

Q-B.2.c (City)

Ancillary Uses and Facilities. The subject property may only be used for the following uses and facilities. These ancillary uses and facilities described in the July 1997 Draft Subsequent EIR, pages 2-38 through 2-43, and may be located on the applicant's property generally in conformance with the diagram attached as Exhibit e-4, and during the life of the landfill, may be moved or relocated following commencement of landfilling operations as necessary to accommodate development of the ultimate landfill footprint.

Biota-4.29 (County)

San Diego Horned Lizard: Impact on the San Diego horned lizard can be mitigated to a level of less than significant by restoring coastal sage scrub habitat. This will create a temporal loss of the species, but the population should recover following restoration of this habitat. Topsoils should be selected that are friable to suit lizard habitat requirements.

Biota-4.30 (County)

California Gnatcatcher: Surveys shall be conducted for California gnatcatchers prior to Game Permit onsite grading to determine the status of this Game species within development areas.

Biota-4.33 (County)

Migratory Bird Treaty Act: To prevent the loss of an active migratory bird nest, vegetation shall not be cleared during the breeding season (i.e. March 15 to August 1).

Biota-4.34 (County)

Raptor nests: If habitat removal is proposed during the raptor breeding season (i.e. March to July), a survey shall be conducted for active nesting areas.

Current Status/Comments – In January 2015, the access road realignment construction was stopped for the rainy season. Jute netting and straw wattles were installed to provide run-off control. Hydroseeding was also done to control erosion. Three temporary sedimentation/retention

basins were constructed between the condensate treatment facility and the terminal basin. The top temporary basin closest to the condensate treatment facility showed erosion from the prior recent rains. The two other temporary basins downstream performed as designed and discharged runoff into the terminal basin.

Construction of the new truck scales were complete and they were operational.

In February 2015, the top temporary retention basin had a washout of the downhill wall from the prior rainstorm. The other two temporary basins were able to hold the flow and sediment. The condensate treatment plant was shut down and was being decommissioned. The Baker tanks were removed. Recovered condensate was piped and pumped to the sewer connection near the landfill entrance. In March 2015, the access road realignment construction had started again with multiple work areas, from the condensate treatment site to the oil field access road. The rough grading of the pad was completed west of the new scales for the relocation of the offices.

Prior to the restarting of the access road realignment construction, a Republic consultant performed a biological survey for nesting birds and the San Diego horned lizard. He advised Republic that the construction area was clear to restart grading.

Q-C.10.c (City)

The operator shall submit, as part of its annual report, an evaluation of the feasibility of beneficial uses of the landfill gas collected at the site such as landfill-gas-to-energy.

Odor/Landfill Gas - 7.07 (County)

The permittee will recover and sell as much gas as is technically and economically feasible to reduce total air quality emissions from the landfill operations. It is expected that the technical and economic feasibility of commercial recovery and sale of landfill gas as a renewable energy resource will occur at levels below 40 MMCFD. The gas collection system will be installed in increments to allow for maximum gas recovery.

Gas - 52 (County)

To the extent technically and economically feasible, the Permittee shall use Landfill gas for energy generation at the Facility or other beneficial uses, rather than flaring, and shall obtain all applicable local, state, and/or federal approvals for any such use. Notwithstanding the foregoing, the Permittee shall be exempt from this Condition No. 52 if, as a 'part of its annual report required by Part X of the IMP, the Permittee determines that any such activity or project is infeasible, which determination shall be subject to the review and approval of the Director of Public Works.

The Permittee shall also install and maintain a landfill gas collection system complying with SCAQMD requirements, which uses best available control technology to control the lateral migration of gases to the satisfaction of the Director of Public Works, County LEA, and SCAQMD. In addition to the other requirements of this Condition No. 52, Landfill gas flares shall be installed below the adjacent interior ridges of the site, unless otherwise required by the SCAQMD, and the flames shall be totally contained within the stacks. Flame arrestors shall be provided to the satisfaction of the County Forester and Fire Warden.

Current Status/Comments – In January and early February 2015, the gas-to energy facility was operating at maximum generation with no operational problems.

In late February 2015, there was a planned Edison outage that caused the plant to temporarily go down due to lack of compressed air on the gas inlet controls. Modifications were made and a redundant air control system was installed. After a short period, the plant was operating at 85% capacity during the remainder of the outage due to the flare blowers not having purchase power.

In March 2015, the gas-to-energy facility was operating at maximum generation without any operational problems. The modifications made during the outage in February provided the plant with redundant control air which enables the facility to continuously operate during future planned and unplanned Edison outages.

T-4 (City)

Prepare a plot plan ["fire plan"] to the satisfaction of the Fire Department.

a. immediate access fire plan [now]

b. plot plan for the future facilities will be submitted when these are implemented

Fire Service - 12.03 (County)

The permittee shall maintain onsite fire response capabilities, construct access road, provide water tanks, water mains, fire hydrants and fire flows and perform brush clearance to the satisfaction of the County Forester and Fire Warden. The landfill will comply with all applicable County codes and ordinances which delineated the requirements for fire access, water mains, fire flows and fire hydrants, specifically defined by the County Fire Department. New construction water tanks, water mains and fire hydrants will be completed to meet the fire flow requirements of the Fire Department.

Current Status/Comments – There is no secondary access road now that the Flare 8 road has been eliminated. The need for having a secondary access road was discussed with the Republic operations manager in the first quarter of 2014 with the possibility of just grading the City Deck C access road to the oil field for passenger car use and denoting the road to be used as a secondary access in case of an emergency. The current road from Deck C has deep ruts which could inhibit passenger vehicle use. Grading and placement of rock should be performed to make this an all-weather passenger vehicle-class road.

M-4.1.1(2) (City)

Areas outside of and above the cut and fill as shown on the conceptual grading plan shall not be graded, except for the development of ancillary facilities or other related improvements. Additional grading may be necessary for slope stability or drainage purposes. Prior to undertaking any grading activities, the Department of Building and Safety shall be notified and approve any additional grading based on engineering studies (in accordance with CCR Title 27) provided by the project proponent and independently evaluated by the Department of Building and Safety.

M-4.1.1(4) (City)

Grading that allows for construction of ancillary facilities outside of the landfill footprint or that has the potential to impact property beyond the boundary of the landfill shall be approved by the Department of Building and Safety.

M-4.1.1(5) (City)

All grading activities shall be in compliance with specific requirements provided in a comprehensive geotechnical report prepared specifically for the proposed project, including provisions for excavation approved by the Department of Building and Safety, City Engineer, City LEA and other Responsible Agencies.

Geology-1.07 (County)

All grading activities shall be in compliance with specific requirements provided in a comprehensive geotechnical report prepared specifically for the proposed Project, including provisions for excavation approved by the County Department of Public Works, the County Local Enforcement Agency (LEA) and other Responsible Agencies.

Current Status/Comments – In early February 2015, the area west and to the south of the offices had a substantial amount of grading since the last monitoring. Republic's geotechnical consultant had installed horizontal subdrains to dewater areas of the hillside being graded. A buttress was designed and a report was submitted to the LARWQCB and the City Department of Building and Safety for approval. The geotechnical reports and grading plans were not available for review by the monitor.

In late February 2015, the potential concerns regarding the risk of groundwater lubricating a landslide lens and impacting the stability of the hillside was addressed by the placement of horizontal subdrains in the area west and south of the offices.

At the end of March 2015, grading activities for the new realigned access road had resumed with excavation and filling of the area. It was noted that compaction tests with a nuclear gauge were being performed to ensure proper placement of fill. Water was used to control moisture of the soil and limit dust. Alluvium was removed from the area where the toe berm will be constructed and where the underdrain and liner will be installed. Final layout with elevations were not available for review.

M-4.1.1(6) (City)

Revegetation and erosion control procedures on all exposed slopes shall be implemented. The erosion controls to be implemented at the site shall include soil stabilization measures and revegetation in accordance with the approved revegetation plan as approved by the City Building and Safety Department. Interceptor ditches shall be designed to divert storm runoff to a sedimentation basin.

M-4.2.11(23) (City)

Disturbed areas shall be revegetated with an interim ground cover as specified in the proposed revegetation program. Excavation will proceed in a manner to reduce the amount of graded areas at any given time.

M-4.2.12 (28) (City)

Site Erosion

c. A temporary vegetation cover shall be established on all slopes that are to remain inactive for a period longer than 180 days.

d. An SCAQMD approved soil stabilization (sealant) product shall be used to retard soil erosion and enhance revegetation. Soil sealant shall be applied when necessary to selected working areas of the landfill. The sealant will also be used as a binder or tackifier to hold seen during revegetation mulch, and fertilizers in-place until grasses become establish and stabilize on the landfill surface.

Geology-1.13 (County)

Revegetation and erosion control of all exposed slopes will be an ongoing process. The erosion controls to be implemented at the site will include soil stabilization measures and revegetation in accordance with the approved Revegetation Program. The installation of interceptor ditches shall be designed for the diversion of storm runoff to sedimentation basins. Sediment traps will be used at points of runoff concentration along the perimeter of exposed slopes surfaces.

Condition: Approval of drainage plan. Retention of a consulting horticulturalist/Registered Professional Forester and an independent qualified biologist by the permittee for ongoing supervision of revegetation programs. Review and monitoring of planting programs by County Forester.

Geology-1.14 (County)

To prevent soil erosion on the face of the landfill, interim vegetation measures will be taken after placement of the temporary soil layer (even though the area may be disturbed by future filling operations). Vegetative cover will be placed as in the approved Revegetation Program.

Condition: Retention of a consulting horticulturalist/Registered Professional Forester and an independent qualified biologist by the permittee for ongoing supervision of revegetation programs. Review and monitoring of planting programs by County Forester.

Biota – 4.42 (County)

Areas inactive for 180 days or longer will be planted with interim vegetation as approved by County biologist. Records will be kept to track fill areas of the site which are transferred to an inactive status so that appropriate dust control and revegetation measures can be implemented.

Air Quality - 6.02 (County)

Dust Control will also be accomplished through the temporary revegetation of the landfill surface. A temporary revegetation of the landfill surface, and a temporary vegetation cover will be established on all slopes that are to remain inactive for a period longer than 180 days. Specifications of temporary revegetation measures will be provided in the Revegetation Plan submitted to the County biologist for approval, the Closure and Postclosure Maintenance Plans, the Condition Use Permit, and Conditions of Project Approval.

Visual-10.08 (County)

Cover/Revegetation Requirements

The permittee shall comply with the following cover and re-vegetation requirements at the Landfill:

(1). The permittee shall apply a temporary hydroseed vegetation cover on any slope or other Landfill area that is projected to be inactive for a period greater than 180 days, as set forth in the IMP. The permittee shall promptly notify the County LEA and the Department of Public Works of any such slope or area;

Revegetation Requirements

(5) Notwithstanding the foregoing, the permittee shall not be bound by the previous provisions of this Condition No. 44, but instead by the requirements of the County LEA, so long as the Limits of Fill are not exceeded, if in consultation with the Department of Public Works, the County LEA determines that a different re-vegetation design or plan:

(1) would better protect public health and safety;

(2) would enable revegetation of the final slopes at least as well as shown in Exhibit "B" described in subsection D, above; and/or experts, including an independent, qualified bio(3) would be required because the minimum standards adopted by the CIWMB have been amended;

(6) the permittee shall employ an expert or biologist, to satisfy this Condition No. 44. Soil sampling and laboratory analysis shall be conducted in all areas that are required to be re-vegetated before any re-vegetation occurs to identify chemical or physical soil properties that may adversely affect plant growth or establishment. Soil amendments and fertilizer recommendations shall be applied and plant materials selected, based on the above referenced testing procedures and results. To the extent possible, plant types shall blend with species indigenous to the area, be drought tolerant, and be capable of rapid growth. The selected plants shall not include nonindigenous species that are likely to be invasive of adjacent natural areas.

Biota - Revegetation - 44.A (County)

A. The Permittee shall apply a temporary hydroseed vegetation cover on any slope or other Landfill area that is projected to be inactive for a period greater than 180 days, as set forth in the IMP. The Permittee shall promptly notify the SCL-LEA and the Department of Public Works of any such slope or area.

Revegetation - 44.F/44.F CUP (County)

F. The Permittee shall employ an expert or experts, including an independent, qualified biologist, to satisfy this Condition No. 44. Soil sampling and laboratory analysis shall be conducted in all areas that are required to be re-vegetated before any re-vegetation occurs to identify chemical or physical soil properties that may adversely affect plant growth or establishment. Soil amendments and fertilizer recommendations shall be applied and plant materials selected, based on the above-referenced testing procedures and results. To the extent possible, plant types shall blend with species indigenous to the area, be drought tolerant, and be capable of rapid growth. The selected plants shall not include non-indigenous species that are likely to be invasive of adjacent natural areas.

Current Status/Comments – The hydroseeding of interim or inactive slopes was completed in June of 2014, and jute netting and hydroseeding done in the access road realignment area in October and November of 2014. Due to the lack of rain in the Fourth Quarter 2014 monitoring period, no acceptable on-site recycled water for irrigation and naturally occurring high levels of salts and acidity in the soils, the hydroseeding did not germinate until after rains in December 2014 through February 2015. Without using potable water for irrigation, the hydroseeding will have minimal success. The use of systems like jute netting or plastic netting on temporary or inactive slopes during this water shortage drought period in lieu of hydroseeding should be considered.

In January 2015, slopes adjacent to the realigned access road downstream of the temporary basin appeared to have had minor soil spill on the landfill road during the last rain.

In February 2015, the upper temporary basin east of the condensate treatment pad had major soil erosion during the last rains and was removed because of erosion damage. Two temporary basins remain to handle the westside flow into the terminal basin.

In January and March 2015, gusty winds were causing dry areas of the landfill to have blowing dust. The use of soil sealant should be investigated.

M-4.4(11) (City)

An operations checklist shall be used by a registered engineering geologist for surveys following all earthquake events measuring 5.0 on the Richter scale or greater near the project site. A comparison of operating parameters and site conditions before and after major earthquake events shall be made to verify that systems are operational as designed. Final designs for major engineered structures shall be based on the results of the detailed stability analyses of potential seismic events.

Current Status/Comments – The replacement of the onsite seismic detector/monitor with a new or reconditioned device has not been completed. The foundation has been constructed in the alluvial/recycled water facility at the entrance to the landfill.

M-4.2.13/29, 30, 32, 33, 34 (City)

The natural biological processes that generate odors in a landfill through anaerobic decomposition cannot be prevented or avoided. However, the LFGs shall be prevented from escaping to the atmosphere through the use of control measures. These measures include using daily and intermediate cover material over deposited wastes, filling any surface cracks with clean dirt as

necessary, and extracting LFG through the use of an LFG collection and recovery system and destroying collected gases by combustion.

Operational techniques shall be utilized to control odor sources at the landfill. The size of the working face shall be limited so that the area of waste exposed to the atmosphere is kept to a minimum.

The LFG collection and recovery system shall be installed in phases as each portion of the landfill site is filled. The final system shall contain a network of gas extraction wells, collection system piping, and flaring facilities. Because the LFG generation begins at lower levels of volume and increases during the landfill site life, the gas will be flared initially until sufficient quantities are available for processing into electricity.

If an odor problem should develop, appropriate control measures shall be implemented. These measures include the application of additional dirt daily cover material or more frequent application of the cover material to seal the landfill surface, or adjustments to the wells, equipment, and operation of the LFG collection and recovery system.

To ensure that odors are kept to a minimum, the following odor/LFG monitoring program shall be implemented for the proposed landfill project. The monitoring program shall comply with the requirements of SCAQMD Rule 1150.1 and include:

- a. *Sample Probe Installation:* One monitoring probe per 1,000 feet or as identified by South Coast Air Quality Management District (SCAQMD) and/or Local Enforcement Agency (LEA) in the landfill expansion, and one probe per 650 feet or as identified by SCAQMD and/or LEA in the City Inactive landfill along the landfill perimeter, or whichever is more restrictive shall be installed to identify potential areas of subsurface landfill gas (LFG) migration. These probes shall be monitored to ensure that quantities of LFG beyond regulatory standards do not vent offsite through subsurface soils.
- b. *Integrated Landfill Surface Sampling:* The landfill surface shall be monitored to ensure that the average concentration of total organic compounds over the landfill surface does not exceed SCAQMD's standard of 25 ppm.
- c. *Ambient Air Samples:* 24-hour integrated gas samples and required meteorological data shall be taken to assess any impact the landfill is having on the ambient air quality at the landfill perimeter.
- d. *Instantaneous Landfill Surface Monitoring:* Spot checks on the landfill surface shall be made to determine the maximum concentration of total organic compounds measured as methane, measured at any one point on the surface of the landfill does not exceed the SCAQMD's standard of 500 ppm.
- e. *Regular Monitoring and Annual Testing:* LFG concentrations at perimeter probes, gas collection system headers, the landfill surface, and in ambient air downwind of the landfill shall be monitored once per month or less frequently (but no less than quarterly) as required by the SCAQMD. The LFG collection system shall be adjusted and improved based on quarterly monitoring data and annual stack testing results.

Odor/Landfill Gas - 7.06 (County)

If an odor problem should develop, appropriate control measures shall be implemented. These measures include the application of daily cover material or more frequent application of the cover material to seal the landfill surface, or adjustments to the wells, equipment, and operation of the LFG collection and recover system.

Amendment 45.N - 4.a, 4.c, 4.d (County)

Identify and provide status on the measures currently being implemented as required by the AQMD's Order for Abatement.

An odor patrol program, which would include the following at a minimum:

- Provide a trained technician to conduct odor patrols in the surrounding neighborhoods at a frequency of one patrol per hour from 6 a.m. to 10 a.m., Monday through Saturday, and during adverse wind conditions.

- *If odor is detected, identify its potential and/or actual source, including those that may not be related to the Landfill's operation, such as an odorous trash dumpster or transfer trucks.*
- *If odor is determined to be related to the Landfill's operation, take immediate action to reduce the odor. Document the streets patrolled on a map, time of the patrol, potential source of odor, and immediate actions taken by the Landfill.*
- *A landfill gas mitigation plan in preparation for the next rainy season since landfill gas emissions from either the landfill surface or landfill gas control equipment is cited as a potential contributor in the AQMD's Order for Abatement. The plan should include the following at a minimum:*
 - *Description of the site's current Gas Monitoring and Control Plan, including a map showing locations of gas monitoring probes, gas extraction wells, horizontal and vertical gas collection lines, etc.*
 - *Compliance history of the site's landfill gas migration control program from January 1, 2009, to the present quarter as well as any corrective actions.*
 - *Discuss the impacts of the most recent heavy rains on the landfill gas collection system, including identifying locations of damage due to soil erosion, as well as any corrective actions or mitigation measures.*
 - *A work plan that includes preventive measures, such as identifying and filling any surface cracks and installing additional extraction wells, as well as contingency measures.*
 - *An implementation schedule for the above work plan.*

Amendment 45.N - 5 (County)

Include in the Quarterly Dust and Odor Reports, which are required by CUP Condition No. 45.N, the status and effectiveness of mitigation measures 1 through 3 above, and the Odor Mitigation Plan.

Current Status/Comments – Compliance with these mitigation measures, concerning landfill gas monitoring and odor control and detection, is being monitored by a multi-agency team led by the SCAQMD with their monitoring results noted in their reports. Only obvious gas emission sources, odorous operations related to gas and/or gas and landfill liquids, lack of cover, or exposed trash resulting in odor observed during UltraSystems' monitoring visits will be reported.

In January, it was observed that the condensate treatment facility had strong odors that could be detected 30 to 50 feet away from the facility. Republic was notified of the observation. It was observed that the leachate and condensate holding tanks on the Old City South top deck had odors coming out of a top access hatch. Republic was notified of this condition. It was observed that a contractor's vacuum truck was pumping landfill liquids into the deep well of the sewer lift station. A strong localized odor was detected. Republic was notified of the condition. Republic staff stated that they would investigate the sources of odor and take any action required.

In late February 2015, it was detected that the sewer lift station had localized odors near the carbon filter drum. It was also observed that the main access road cattle guard crossing had localized gas odors. The condensate treatment facility was being decommissioned and had localized odors from open pipes and equipment. Republic staff stated they would investigate and take appropriate action.

During the March 2015 monitoring, fleeting odors were observed at two or three locations on Timber Ridge Drive and two locations on Mission Tierra Way. The odors resembled landfill liquids. Strong odors were observed at condensate sump CS-22. Liquid was ponding on the ground and in the lined drainage ditch. Republic staff was notified. Sump CS-22 lost its air supply and the contractor was directed to repair the air supply.

M-4.3.1(36) (City)

To ensure that infiltration of surface water into the closed landfill cells is minimized, surface runoff shall be intercepted and diverted around the landfill. The method of diversion used at the project site shall include the use of lined interceptor ditches placed along the edges of the landfill areas. This system of ditches shall flow into monitored sedimentation basins. After sediment content has been reduced, surface waters shall flow into the existing flood control channel directly east of the project site entrance.

Surface Water - 2.03 (County)

As development of the site proceeds, surface drainage control facilities will be maintained so that surface water runoff is diverted from the working faces and isolated from contact with the waste. Onsite drainage control channels will be designed per CCR, Title 23, Division 3, Chapter 15, Article 3, § 2546, which mandates the requirements for a capital storm event (100 year, 24-hour precipitation).

Current Status/Comments – It was observed in January 2015 that a lined runoff control basin upstream of Cell CC-3A is still being used. The RWQCB approved this temporary basin last year which needs the water to be pumped out to drain. Temporary HDPE lined slope drainage V-ditches and concrete V-ditches and channels have been installed.

It was also observed during the January 2015 site monitoring that there are no clear drainage patterns on the County top deck nor the Old City North top deck. There are numerous low spots where water may pond and infiltrate. Some of these low spot areas could be seen by the presence of vegetation growing where ponding had occurred.

M-4.3.1(37) (City)

As development of the site proceeds, surface drainage systems shall be maintained so that surface runoff is diverted away from working slopes and isolated from landfilled refuse. Onsite drainage channels would be designed per CC, Title 23, Division 3, Chapter 15, Article 3, §2533(C), and County of Los Angeles Public Works Department, Flood Control Division requirements.

M-4.3.1(38) (City)

Permanent bench drainage ditches shall be installed when final cover is placed on completed portions of the landfill. These ditches shall be lined. Temporary unlined drainage facilities consisting of diversion ditches (V-ditches) where necessary shall directly intercept natural surface runoff. Any intermittent channel flow in the existing canyon bottom shall be captured, channeled, and conveyed into a sedimentation basin. Diversion ditches shall convey surface runoff from the undisturbed areas to the permanent perimeter ditches for safe transport around the landfill footprint. Surface covers of various types, from mulches to vegetation, shall be used to retard erosion from areas of disturbance. In addition, areas of disturbance shall be kept at a minimum during active filling operations.

Surface Water - 2.12 (County)

Permanent bench drainage ditches shall be installed when final cover is placed on completed portions of the landfill. These ditches shall be lined. Temporary unlined drainage facilities consisting of diversion ditches (V-ditches) where necessary shall directly intercept natural surface runoff. Any intermittent channel flow in the existing canyon bottom shall be captured, channeled, and conveyed into a sedimentation basin. Diversion ditches shall convey surface runoff from the undisturbed areas to the permanent perimeter ditches for safe transport around the landfill footprint. Surface covers of various types, from mulches to vegetation, shall be used to retard erosion from areas of disturbance. In addition, areas of disturbance shall be kept at a minimum during active filling operations.

Current Status/Comments – It is assumed that the permanent drainage V-ditches and channels are designed in accordance with the referenced regulations. The design drawings and reports should be available for review.

M-4.3.1(39) (City)

As filling operations progress upward in elevation and laterally across the canyon, both permanent and temporary drainage facilities shall be used to provide appropriate drainage protection. The lower elevation portions of the landfill working face shall be placed under final cover as soon as final grade is attained, and bench ditches shall be installed that will connect to adjacent, permanent perimeter ditches. These ditches shall connect directly to the temporary diversion drainage ditches that will protect the active landfill areas from natural surface runoff.

M-4.18 / 178 (City)

The maximum permitted elevations for the landfill shall not be allowed to be exceeded at any time during landfill development and shall be verified through survey control points.

Visual 10.01 (County)

The maximum permitted elevations for the landfill will not be exceeded at any time during landfill development. Elevations will be verified periodically through survey control points. Stockpiled soil and final over shall not be subject to this limitation.

Visual 10.02 (County)

The final fill elevations for the landfill will be maintained below the closest adjacent abutting external ownership perimeter ridgeline, as show on Exhibits "A-1" and "A-2", Exhibit B (Figure 1-1 in the October 2004 EIR Addendum), and the County's approved construction plans.

Current Status/Comments – A map showing areas that are at the final elevations and should have final cover should be available for review.

M-4.3.1(40) (City)

In order to monitor the effectiveness of those measures designed to prevent pollution from entering the offsite stormwater system, the project proponent shall be required to apply for coverage under the SWRCB General Construction Activities Stormwater Permit Programs.

M-4.3.1(45) (City)

An erosion control plan would be implemented by the project proponent to prevent stormwater pollution from construction activity. Construction materials, equipment and vehicles would be stored or parked in areas protected from stormwater runoff. Construction material loading and unloading would be in designated areas to minimize any washout due to stormwater runoff. Pre-construction controls would be implemented to include the use of a sandbagging system, including sandbag check dams and sandbag desilting basins, which would be used to limit runoff velocities and minimize sediment in storm water runoff.

Surface Water 2.14 (County)

An erosion control plan would be implemented by the project proponent to prevent stormwater pollution from construction activity. Construction materials, equipment and vehicles would be stored or parked in areas protected from stormwater runoff. Construction material loading and unloading would be in designated areas to minimize any washout due to stormwater runoff. Pre-construction controls would be implemented to include the use of a sandbagging system, including sandbag check

dams and sandbag desilting basins, which would be used to limit runoff velocities and minimize sediment in storm water runoff.

Current Status/Comments – The erosion control plan should be available onsite for review. This plan should be a living document that keeps up with construction activities.

In February 2015, the embankment separating the top basin of the three temporary cascading basins installed south of the condensate treatment plant between the access road and the slopes of the City south landfill failed. This resulted in that basin being eliminated and a smaller remaining total capacity from just the two remaining basins. The smaller capacity does not appear to be a problem for the overall performance of the drainage system. These basins are mainly fed by the new shotcrete drainage channel along the access road. The newly formed top basin is fed by a new, lined downchute.

M-4.3.1(46) (City)

A preventive maintenance program would be implemented by the project proponent, including inspection of facility equipment, systems, and stormwater management devices to detect conditions that may cause breakdowns or failures resulting in discharge of materials into stormwater. This program applies to the onsite drainage ditches; rip-rap; berms and dikes; dust control; silt fences; diversion grading; and pavement surfaces. Each system and piece of stationary equipment would be inspected monthly. Procedures for inspection would vary, due to the piece of equipment or system. However, the major elements of the inspection program would include checking for cracks or structural failures, inspecting parts or pieces of equipment nonfunctioning, checking for the degradation or deterioration of operating units, and investigating the need for cleaning or emptying units. A summary report of these monitoring results and the corrective actions taken will be disseminated in each newsletter with a more detailed report on the web site and in the annual report.

Surface Water 2.15 (County)

Surface Water Preventive Maintenance Program

A preventive maintenance program will be implemented by the permittee, including inspection of facility equipment, systems, and stormwater management devices to detect conditions that may cause breakdowns or failures resulting in discharge of materials into stormwater. This program applies to the onsite drainage ditches, rip-rap, berms and dikes, dust control, silt fences, diversion grading, and pavement surfaces. Each system and piece of equipment will be inspected monthly.

Procedures for inspection would vary based on the piece of equipment or system. However, the major elements of the inspection program will include checking for cracks or structural failures, inspecting parts or pieces of equipment nonfunctioning, checking for the degradation or deterioration of operating units, and investigating the need for cleaning or emptying units.

Current Status/Comments – In January 2015, a downhill drainage V-ditch near the County sage area and monitoring well P-245 was flowing water under the concrete sidewall of the westside drainage channel that connects Basins A and D. This is in the area that was previously noted to the operator that was in need of repair. This water intrusion could potentially cause the uplifting of the bottom of the channel and the cracking and spalling of the concrete sidewalls.

Basin A had standing water near the risers. It appears that the lower portion of the risers is blocked with soil. Basins A and D outlets were blocked with tumbleweed. The preventative maintenance plan should be available onsite for review along with reports of inspection of the structures and status for scheduling of necessary maintenance.

In March 2015, cracks on the shotcrete face of the terminal basin that were noted in earlier site monitoring visits are still open to infiltration.

One of the long and wide HDPE-lined slope drainage channels on the City south landfill was uplifting from the wind. Additional hold-downs or modification of the type of hold-downs to protect the edge from lifting during high wind conditions was needed.

M-4.4.1(60) (City)

Venturan Coastal Sage Scrub

A detailed conceptual mitigation plan shall be prepared by the project proponent and contain specific information on planting, maintenance, and monitoring. A revegetation plan that includes Coastal sage scrub restoration can feasibly occur onsite. The implementation of this plan will provide onsite mitigation greater than 1:1 to offset the loss of coastal sage scrub.

Current Status/Comments – In early February 2015, City Deck C sage mitigation was green and had sage and other plants being established, besides the predominant saltbush.

In late February 2015, the City Deck C was lush and doing well. Native species were growing under and alongside the saltbush. California sage that went dormant had come back in many areas. Black sage did not survive. Some non-natives like tobacco bush need to be removed. The Deck B sage area was doing well. Mustard control and removal of other non-natives would substantially help this area. Total removal and replanting may not be necessary for Deck B.

In March 2015, Deck C sage mitigation was doing well. Plants were slowing down in green growth due to warm temperatures and no rain. The oak trees in the PM-10 berm area were doing well. Some areas may be ready for planting understory trees.

Biota - 4.27 (County)

Venturan Coastal Sage Scrub: A detailed conceptual mitigation plan shall be prepared by the permittee and shall contain specific information on planting, maintenance, and monitoring. A revegetation plan that includes coastal sage scrub restoration can feasibly occur onsite. The implementation of this plan will provide onsite mitigation greater than 1:1 to offset the loss of coastal sage scrub.

Current Status/Comments – In January 2015, the County sage mitigation area had greened-up from recent rain events.

In early February 2015, the County sage mitigation area had greened up since the last monitoring. The recent rains have helped the existing vegetation. The friable soils showed deeper rutting from rain runoff. No mitigation work is being done in this area.

In late February 2015, the County sage area friable soils appear to be a prime cause of the lack of vegetation being able to be reestablished. Areas that had established vegetation were green from the rains. A trial project to stabilize the soil with wattles, netting, or some other system may be helpful in finding a solution to erosion of the friable soils.

M-4.4.1/63 (City)

San Diego Horned Lizard

Impacts on the San Diego horned lizard can be mitigated to a level of less than significant by restoring coastal sage scrub habitat. This will create a temporal loss of the species, but the population should recover following restoration of this habitat. Topsoils should be selected that are friable to suit lizard habitat requirements.

Current Status/Comments – A sandy soil habitat has been provided for the lizard in the City Deck C mitigation area. Native ants (a food source) were observed. No lizards have been observed.

M-4.4.2/67 (City)

Migratory Bird Treaty Act

To prevent the loss of an active migratory bird nest, vegetation shall not be cleared during the breeding season (i.e., March 15 to August 1). If vegetation clearing needs to occur, surveys shall be conducted by biologists to determine active migratory bird nests. All active migratory bird nests shall be protected until the young become independent.

Biota - 4.33 (County)

Migratory Bird Treaty Act

To prevent the loss of an active migratory bird nest, vegetation shall not be cleared during the breeding season (i.e., March 15 to August 1). If vegetation clearing needs to occur, surveys shall be conducted by biologists to determine active migratory bird nests. All active migratory bird nests shall be protected until the young become independent.

Current Status/Comments – In late February 2015, Flare 8 hillside grading limits and the native vegetation on the side slopes of this hillside that would be impacted due to the proposed grading for the Flares 11 and 12 site were observed. Republic's biologist has performed a biological assessment and will issue a report on the existing vegetation and wildlife. This report should be provided to the County and other appropriate agencies.

M-4.4.2/69 (City)

Potential candidate mitigation sites have been identified by the project proponent in conjunction with resource agencies for consideration to compensate for impacts on riparian and wetland resources as a result of project development. These sites include Bull Creek, Bee Canyon and East Canyon, which are located proximate to the project site. Prior to the development of any detailed mitigation plans and drawings, the final selection will be determined cooperatively by the CDFW, Corps, SWRCB, and other regulatory agencies in conjunction with the City and project proponent.

Current Status/Comments – The Corps of Engineers is reviewing an agreement between the City and Republic for compliance with the Corps' requirements for wetland mitigation.

M-4.4.3(82) (City)

An annual monitoring report shall be prepared and submitted to the City Department of Public Works, Street Tree Division by the project proponent. This report shall detail the growth and survival record for each mitigation tree planted. The report will provide an accounting of the number of trees required for mitigation versus the number of qualifying trees planted. Maintenance recommendations will be included in the annual report.

Biota - 4.13 (County)

All oak trees will be counted when removed to verify that adequate mitigation has been provided in accordance with the Oak Tree Mitigation Plan.

Current Status/Comments – In February 2015, the County biologist noted that numerous coast live oak trees on the native hillsides between Basin A and Basin D were dying, and stated that Republic should talk to the County forester and fire staff about this condition.

M-4.9.1(94) (City)

The spill response program shall be part of required training for all facility employees. In the event of a spill, containment is paramount. All landfill employees shall be trained to use dirt and/or other absorbent materials to pick up and/or contain small spills of oils, solvents, and/or other material that may be harmful to the public, facility workers, or the environment. Training in the use of personal protective equipment, fire extinguishing aids (e.g. hoses or extinguishers), and spill containment/mitigation (e.g. absorbents) shall be provided.

Current Status/Comments – In February 2015, grading equipment was parked on the County top deck and oil drip pans were not being used.

M-4.9.4(121) (City)

The landfill operator shall implement a fire prevention plan in compliance with CCR, Title 8, § 3221. Components of this written fire prevention plan shall include potential fire hazards and their proper handling and storage procedures; potential ignition sources (i.e., welding or smoking), their control procedures, and the type of fire protection equipment or systems that can control a fire involving them; names or regular job titles of those responsible for maintenance of equipment and systems installed to prevent or control ignitions or fires; and names or regular job titles of those responsible for the control of accumulation of flammable or combustible waste materials.

Fire Service - 12.03 (County)

The permittee shall maintain onsite fire response capabilities, construct access road, provide water tanks, water mains, fire hydrants and fire flows and perform brush clearance to the satisfaction of the County Forester and Fire Warden. The landfill will comply with all applicable County codes and ordinances which delineated the requirements for fire access, water mains, fire flows and fire hydrants, specifically defined by the County Fire Department. New construction water tanks, water mains and fire hydrants will be completed to meet the fire flow requirements of the Fire Department.

Current Status/Comments – In February 2015, a secondary access road from Deck C to the oil field and Sesnon Boulevard had deep ruts and may not be able to be used by a normal road clearance passenger vehicle. The access road needed to be graded and have rock placed. Many facilities on site are being relocated. A fire plot plan showing the new locations and roadways should be prepared and provided to the City Fire Department and City and County Planning. Emergency egress should be posted for site employees and customers.

M-4.9.4(125) (City)

The landfill operator shall maintain perimeter fencing in and around the site in accordance with CCR, Title 14, § 17658 to discourage illegal entry to the landfill. Where existing topography conditions create an effective barrier, no perimeter fencing shall be installed. Entrance and access gates shall remain locked when the landfill facility is not in operation. All existing perimeter fencing shall be inspected on a routine basis by the landfill operator, and necessary repairs shall be made to ensure a continued deterrent for unauthorized entry to the project site. Additionally, the landfill operator shall maintain posted "no trespassing" signage at the exterior perimeter fencing nearest the project site entrance.

Current Status/Comments – In January 2015, the south perimeter gate in the oil field was closed but not locked.

In March 2015, the south perimeter oil field gate was observed to be locked.

M-4.19.1(183) (City)

Prior to the commencement of initial earth excavation, specific sections of the project area shall be resurveyed as a precautionary measure to minimize potential loss of undiscovered archaeological resources. Specific areas within the project site to be resurveyed shall be determined by the intended cut-and-fill areas proposed for landfill development. As new areas for excavation are identified, an evaluation of those areas shall be made based on the prior survey results and consultation with appropriate technical specialists. Factors to be considered for delineation of areas to be resurveyed will be known site selection factors associated with aboriginal groups suspected of having inhabited the general area. These factors include proximity to water, the type of vegetation (e.g., food source, shelter, and fuel), and the topography (e.g., slope and aspect).

Ecological Significance 62 (County)

The Permittee shall develop and implement a program to identify and conserve all significant archaeological and paleontological materials found onsite pursuant to Part VII of the IMP. If the Permittee finds any evidence of aboriginal habitation or fossils during earthmoving activities, Landfill operations shall immediately cease in that immediate area, and the evidence and area shall be preserved until a qualified archaeologist or paleontologist, as appropriate, makes a determination as to the significance of the evidence. If the determination indicates that the archaeological or paleontological resources are significant, the resources shall be recovered to the extent practicable prior to resuming Landfill operations in that immediate area of the Landfill.

Current Status/Comments – In March 2015, archaeological surveys were performed on the natural, undisturbed areas where grading for the access road realignment will occur. No items of concern were found. Archaeological reports are on file and are available in Republic's offices.

M-4.19.2(187) (City)

Prior to the commencement of initial earth excavation, specific sections of the City/County Landfill Project area shall be resurveyed as a precautionary measure to minimize potential loss of undiscovered paleontological resources. Specific sections of the project area to be resurveyed shall be as determined by the intended cut-and-fill areas proposed for landfill development. As new areas for excavation are identified by the project proponent, an evaluation of those areas shall be made based on the prior survey results and consultation with appropriate technical specialists.

Ecological Significance 62 (County)

The Permittee shall develop and implement a program to identify and conserve all significant archaeological and paleontological materials found onsite pursuant to Part VII of the IMP. If the Permittee finds any evidence of aboriginal habitation or fossils during earthmoving activities, Landfill operations shall immediately cease in that immediate area, and the evidence and area shall be preserved until a qualified archaeologist or paleontologist, as appropriate, makes a determination as to the significance of the evidence. If the determination indicates that the archaeological or paleontological resources are significant, the resources shall be recovered to the extent practicable prior to resuming Landfill operations in that immediate area of the Landfill.

Current Status/Comments – During February and March 2015, a paleontological consultant was on site monitoring the excavation west and south of the offices in City and County jurisdictions. No

recoverable resources were encountered; only minor non-recoverable marine fragments. Paleontological reports are on file and are available in Republic's offices.

In March 2015, the grading for the realignment of the access road resumed. A paleontological consultant was monitoring this work area.

Summary of Requested Documents

The following documents, reports and plans are recommended to be made available at the site for agency and monitor review in order to assist in streamlining the monitoring process.

- a) Current Fill Sequence Plan.
- b) A plan showing areas inactive for 180 days or longer with records tracking fill areas and interim reclamation and revegetation, including the timing of proposed work, as well as a plan showing current and projected areas to be within ten feet of the limits of fill.
- c) Maps showing areas that are at final elevation and bench ditches that will connect to drainage ditches to protect against natural surface runoff.
- d) The current erosion control plans should be available for agency and monitor review.
- e) Site drainage plans, including surface and underdrain systems with complementing revegetation plan.
- f) A plan/ report of the liner interceptor ditches design/ installation to ensure that surface runoff is appropriately conveyed to the existing flood control channel directly east of the project site entrance.
- g) Comprehensive geotechnical reports.
- h) A preventative maintenance plan and summary of monitoring reports of inspections of facility equipment, systems and stormwater management devices to detect conditions that may cause breakdowns or failures resulting in discharge of materials into stormwater.

Conclusions

In this reporting period, UltraSystems has monitored the conditions and/or mitigation measures for the City/ County, as shown on the Mitigation Monitoring Summary Excel spreadsheets.

As shown by the Non-Compliant and Further Review Needed sections above, the landfill is actively working toward being fully compliant with conditions and/or mitigation measures, with no non-compliant conditions observed. Furthermore, monitoring of the tasks on these Excel spreadsheets tracks progress toward being fully compliant. Notwithstanding the above, air quality issues are not being actively monitored by UltraSystems, and may not be compliant.

The 2015 First Quarter Mitigation Monitoring Summary Excel spreadsheets track the progress and completion of tasks as they were accomplished during this quarterly period.

Sunshine Canyon Landfill City Mitigation Monitoring Summary

(01-01-2015 through 03-31-2015)

Line #	Reference #	Mitigation #	City Mitigation Measures and Conditions Monitored by Discipline	Monitoring Frequency	First Quarter															
					1/7/2015	Status*	Further Review Needed/Comments**	Resolved*	2/13/2015	Status*	Further Review Needed/Comments**	Resolved*	2/26/2015	Status*	Further Review Needed/Comments**	Resolved*	3/24/2015	Status*	Further Review Needed/Comments**	Resolved*
1	Project Manager																			
2																				
3																				
4	Q - A.3.		Definitions	info	/				/				/				/			
5	Q - A.6.		Submit Annual Reports	June yearly	/				/				/				/			
6	Q - A.10.		Provision of Fees	yearly	/				/				/				/			
7	Q - B.1.		Permitted/Prohibited Landfill Uses	yearly	/				/				/				/			
8	Q - B.2		Approval of Landfill	ongoing	✓	C	NONE		✓	C	NONE		✓	C	NONE		✓	C	NONE	
9	Q - B.2.c.		Ancillary Uses and Facilities	ongoing	✓	FRN	I-a		✓	C	NONE		✓	C	I-c		✓	C	I-d	
10			Ancillary Uses and Facilities																	
11	Q - B.2.d (3)		10 Year Phase Review	2015																
12			10 Year Phase Review																	
13	Q - B.4.d.		Inert/Exempt Materials	info	/				/				/				/			
14	Q - B.5.a.		Prohibited Waste	info	/				/				/				/			
15	Q - B.6.		Waste Diversion	ongoing	✓	C	NONE		✓	C	NONE		✓	C	NONE		✓	C	NONE	
16	Q - C.3.g.		Paved Access Roads	ongoing	✓	C	NONE		✓	C	NONE		✓	C	NONE		✓	C	NONE	

* C = Compliant, NC = Non-Compliant, FRN = Further Review Needed, R = Resolved

** See Appendix I for Comments

Checkmark = Condition or mitigation was monitored

/ = Yearly or non-ongoing monitoring frequency

Sunshine Canyon Landfill City Mitigation Monitoring Summary

(01-01-2015 through 03-31-2015)

Line #	Reference #	Mitigation #	City Mitigation Measures and Conditions Monitored by Discipline	Monitoring Frequency	First Quarter															
					1/7/2015	Status*	Further Review Needed/Comments**	Resolved*	2/13/2015	Status*	Further Review Needed/Comments**	Resolved*	2/26/2015	Status*	Further Review Needed/Comments**	Resolved*	3/24/2015	Status*	Further Review Needed/Comments**	Resolved*
17	Q - C.3.h.		Surfacing of Access Roads	ongoing	✓	C	NONE		✓	C	NONE		✓	C	NONE		✓	C	NONE	
18	Q - C.5.		Graffiti Removal and Deterrence	ongoing	✓	C	NONE		✓	C	NONE		✓	C	NONE		✓	C	NONE	
19	Q - C.10.c.		Evaluation of Beneficial Gas Usage	June yearly	✓	C	I-a		✓	C	I-b		✓	C	I-c		✓	C	I-d	
20	Q - C.10.d. (1)		Alternative Fuel Vehicles	status																
21	Q - C.10.d. (2)		Alternative Fuel Refuse Collection Trucks	status																
22	Q - C.12.a.		Technical Advisory Committee	info	/				/				/				/			
23	Q - C.12.c.		Contract for Mitigation Monitoring	info	/				/				/				/			
24	Q - C.12.c.		Contract for Mitigation Monitoring-5 years	info	/				/				/				/			
25																				
26	T - 4		Fire Plan	status									✓	FRN	I-c					
27	T - 5.j.		Trip Diversion	status	✓	C	NONE		✓	C	NONE		✓	C	NONE		✓	C	NONE	
28	T - 6		Satisfactory Street Lighting	status	/				/				/				/			
29																				
30	M - 4.1.1	7	Reabandonment Procedures	status	✓	C	NONE		✓	C	NONE		✓	C	NONE		✓	C	NONE	
31	M - 4.1.4	11	Post-5.0 Earthquake Analysis	upon event	✓	FRN	I-a		/	NA	NONE		/	NA	NONE		/	NA	NONE	
32	M - 4.2.12	27	Heavy Equipment Operations	ongoing	✓	C	NONE		✓	C	NONE		✓	C	NONE		✓	C	NONE	

* C = Compliant, NC = Non-Compliant, FRN = Further Review Needed, R = Resolved

** See Appendix I for Comments

Checkmark = Condition or mitigation was monitored

/ = Yearly or non-ongoing monitoring frequency

Sunshine Canyon Landfill City Mitigation Monitoring Summary

(01-01-2015 through 03-31-2015)

Line #	Reference #	Mitigation #	City Mitigation Measures and Conditions Monitored by Discipline	Monitoring Frequency	First Quarter															
					1/7/2015	Status*	Further Review Needed/Comments**	Resolved*	2/13/2015	Status*	Further Review Needed/Comments**	Resolved*	2/26/2015	Status*	Further Review Needed/Comments**	Resolved*	3/24/2015	Status*	Further Review Needed/Comments**	Resolved*
33	M - 4.2.12		Heavy Equipment Operations	ongoing	✓	C	NONE		✓	C	NONE		✓	C	NONE		✓	C	NONE	
34	M - 4.2.12	28	Site Erosion-Cover	ongoing	✓	FRN	I-a		✓	FRN	I-b		✓	C	NONE		✓	FRN	I-d	
35	M - 4.2.12		Site Erosion-Cell Height	ongoing	✓	C	NONE		✓	C	NONE		✓	C	NONE		✓	C	NONE	
36	M - 4.2.12		Site Erosion-Sealant	ongoing	✓	FRN	I-a		✓	FRN	I-b		✓	C	NONE		✓	FRN	I-d	
37	M - 4.2.13	29	LFG Control Measures	ongoing	/		I-a		/		I-b		/		I-c		/		I-d	
38	M - 4.2.13	30	Operational Odor Control Techniques	ongoing	/		I-a		/		I-b		/		I-c		/		I-d	
39	M - 4.2.13	31	Solid Waste Compaction	ongoing	✓	C	NONE		✓	C	NONE		✓	C	NONE		✓	C	NONE	
40	M - 4.2.13	32	LFG Collection and Recovery System	ongoing	/		I-a		/		I-b		/		I-c		/		I-d	
41	M - 4.2.13	33	Odor Control Measures	ongoing	✓	FRN	I-a						✓	FRN	I-c		✓	FRN	I-d	
42	M - 4.2.13	34	Odor/LFG Monitoring	ongoing	/		I-a		/		I-b		/		I-c		/		I-d	
43			Periodic LFG Monitoring		/		I-a		/		I-b		/		I-c		/		I-d	
44	M - 4.3.2	52	LFG Migration Mitigation	ongoing	/	NA	NONE		/	NA	NONE		/	NA	NONE		/	NA	NONE	
45	M - 4.3.2	57	Dust Control Water	ongoing	✓	C	NONE		✓	C	NONE		✓	C	NONE		✓	C	NONE	
46	M - 4.4.2	69	Offsite Mitigation Sites	status													✓	FRN	I-d	
47	M - 4.4.2	70	Purchasing Wetland Credit	status	/				/				/				/			
48	M - 4.4.2	71	Funding-Invasive Species Eradication Program	status	/				/				/				/			

* C = Compliant, NC = Non-Compliant, FRN = Further Review Needed, R = Resolved

** See Appendix I for Comments

Checkmark = Condition or mitigation was monitored

/ = Yearly or non-ongoing monitoring frequency

Sunshine Canyon Landfill City Mitigation Monitoring Summary

(01-01-2015 through 03-31-2015)

Line #	Reference #	Mitigation #	City Mitigation Measures and Conditions Monitored by Discipline	Monitoring Frequency	First Quarter															
					1/7/2015	Status*	Further Review Needed/Comments**	Resolved*	2/13/2015	Status*	Further Review Needed/Comments**	Resolved*	2/26/2015	Status*	Further Review Needed/Comments**	Resolved*	3/24/2015	Status*	Further Review Needed/Comments**	Resolved*
49	M - 4.6	85	Site Lighting	status	✓	C	NONE		✓	C	NONE		✓	C	NONE		✓	C	NONE	
50	M - 4.7.1	86	Open Space Buffer Area	ongoing	✓	C	NONE		✓	C	NONE		✓	C	NONE		✓	C	NONE	
51	M - 4.9.3	106	Litter Minimization	ongoing	✓	C	NONE		✓	C	NONE		✓	C	NONE		✓	C	NONE	
52	M - 4.9.3	107	Litter/Debris Containment	ongoing	✓	C	NONE		✓	C	NONE		✓	C	NONE		✓	C	NONE	
53	M - 4.9.3	108	Vehicle Tarping Requirements	ongoing	✓	C	NONE		✓	C	NONE		✓	C	NONE		✓	C	NONE	
54	M - 4.9.3	109	Periodic Offsite Litter Pickup	ongoing													✓	C	NONE	
55	M - 4.9.3	110	Illegal Dumping Activities	ongoing	✓	C	NONE		✓	C	NONE		✓	C	NONE		✓	C	NONE	
56	M - 4.9.3	111	Radio Dispatch Litter Control	ongoing	✓	C	NONE		✓	C	NONE		✓	C	NONE		✓	C	NONE	
57	M - 4.9.3	112	Litter Control	ongoing	✓	FRN	I-a		✓	C	NONE		✓	C	NONE		✓	C	NONE	
58	M - 4.9.5	127	Address Concerns of Citizens' Advisory Committee	ongoing	/				/				/				/			
59	M - 4.9.6	128	Landfill Gas/Collection System-Unsafe Methane Levels Monitoring	ongoing	✓	C	NONE		✓	C	NONE		✓	C	NONE		✓	C	NONE	
60	M - 4.9.6	129	Landfill Gas/Collection System-Detection/Training	ongoing	✓	C	NONE		✓	C	NONE		✓	C	NONE		✓	C	NONE	
61	M - 4.9.6	130	Landfill Gas/Collection System-Risk Mitigation	ongoing	✓	C	NONE		✓	C	NONE		✓	C	NONE		✓	C	NONE	
62	M - 4.16.4	176	Reclaimed Water	status	/				/				/				/			
63	M - 4.16.4	177	Water Conservation	ongoing	✓	C	NONE		✓	C	NONE		✓	C	NONE		✓	C	NONE	
64																				

* C = Compliant, NC = Non-Compliant, FRN = Further Review Needed, R = Resolved

** See Appendix I for Comments

Checkmark = Condition or mitigation was monitored

/ = Yearly or non-ongoing monitoring frequency

Sunshine Canyon Landfill City Mitigation Monitoring Summary

(01-01-2015 through 03-31-2015)

Line #	Reference #	Mitigation #	City Mitigation Measures and Conditions Monitored by Discipline	Monitoring Frequency	First Quarter															
					1/7/2015	Status*	Further Review Needed/Comments**	Resolved*	2/13/2015	Status*	Further Review Needed/Comments**	Resolved*	2/26/2015	Status*	Further Review Needed/Comments**	Resolved*	3/24/2015	Status*	Further Review Needed/Comments**	Resolved*
82	Civil & Geotechnical Engineer																			
83																				
84																				
85	M - 4.1.1	2	Grading Outside of Conceptual Grading Plan Area	ongoing					✓	FRN	I-b		✓	FRN	I-c		✓	FRN	I-d	
86	M - 4.1.1	3	Unsuitable Material Removal/Buffer Zones	ongoing																
87	M - 4.1.1	4	Grading Outside of Landfill Footprint	ongoing					✓	FRN	I-b		✓	FRN	I-c		✓	FRN	I-d	
88	M - 4.1.1	5	Grading Activity Compliance	ongoing					✓	FRN	I-b		✓	FRN	I-c		✓	FRN	I-d	
89	M - 4.1.2	8	Landslide Guidelines	ongoing																
90	M - 4.1.2	9	Soil Stabilization	ongoing																
91	M - 4.1.4	10	Landfill Design	ongoing																
92	M - 4.1.4	11	Earthquake Operations Checklist	upon event	✓	FRN	I-a		/	NA	NONE		/	NA	NONE		/	NA	NONE	
93	M - 4.1.5	12	Geologic Hazards - Liquefaction	ongoing													✓	FRN	I-d	
94	M - 4.1.5	13	Design/Construction-Liquefaction	ongoing																
95	M - 4.1.5	14	Design/Construction-Containment Structures	ongoing																
96	M - 4.1.6	15	Refuse Slope Gradients	ongoing	✓	C	NONE		✓	C	NONE		✓	C	NONE		✓	C	NONE	
97	M - 4.1.6	16	Cut and Fill Slope Gradients	ongoing	✓	C	NONE		✓	C	NONE		✓	C	NONE		✓	C	NONE	
98	M - 4.1.6	17	Final Slope Factors of Safety	ongoing																

* C = Compliant, NC = Non-Compliant, FRN = Further Review Needed, R = Resolved

** See Appendix I for Comments

Checkmark = Condition or mitigation was monitored

/ = Yearly or non-ongoing monitoring frequency

Sunshine Canyon Landfill City Mitigation Monitoring Summary

(01-01-2015 through 03-31-2015)

Line #	Reference #	Mitigation #	City Mitigation Measures and Conditions Monitored by Discipline	Monitoring Frequency	First Quarter															
					1/7/2015	Status*	Further Review Needed/Comments**	Resolved*	2/13/2015	Status*	Further Review Needed/Comments**	Resolved*	2/26/2015	Status*	Further Review Needed/Comments**	Resolved*	3/24/2015	Status*	Further Review Needed/Comments**	Resolved*
99	M - 4.1.6	18	Survey Monuments	ongoing	✓	C	NONE		✓	C	NONE		✓	C	NONE		✓	C	NONE	
100	M - 4.3.2	47	Landfill Liner	ongoing																
101	M - 4.3.2	48	Landfill Liner	ongoing																
102	M - 4.3.2	54	Preliminary Closure/Postclosure Plan	status																
103	M - 4.3.2	55	Landfill Design/Operation/Final Closure Monitoring	status																
104	M - 4.3.2	56	Cover Application	ongoing	✓	C	NONE		✓	C	NONE		✓	C	NONE		✓	C	NONE	
105	M - 4.14.1	155	Access Roadway Grade	ongoing													✓	FRN	I-d	
106	M - 4.18	178	Landfill Elevation Exceedance	ongoing	✓	C	NONE		✓	C	NONE		✓	C	NONE		✓	FRN	I-d	
107																				
108	Hydrologist																			
109																				
110																				
111	M - 4.1.4	11	Earthquake Operations Checklist	upon event	/	NA	NONE		/	NA	NONE		/	NA	NONE		/	NA	NONE	
112	M - 4.3.1	36	Surface Water Infiltration Minimization	ongoing	✓	FRN	I-a													
113	M - 4.3.1	37	Surface Drainage Systems	ongoing					✓	FRN	I-b						✓	FRN	I-d	
114	M - 4.3.1	38	Permanent/Temporary Ditches	ongoing					✓	FRN	I-b						✓	FRN	I-d	
115	M - 4.3.1	39	Drainage Protection	ongoing					✓	FRN	I-b						✓	FRN	I-d	

* C = Compliant, NC = Non-Compliant, FRN = Further Review Needed, R = Resolved

** See Appendix I for Comments

Checkmark = Condition or mitigation was monitored

/ = Yearly or non-ongoing monitoring frequency

Sunshine Canyon Landfill City Mitigation Monitoring Summary

(01-01-2015 through 03-31-2015)

Line #	Reference #	Mitigation #	City Mitigation Measures and Conditions Monitored by Discipline	Monitoring Frequency	First Quarter															
					1/7/2015	Status*	Further Review Needed/Comments**	Resolved*	2/13/2015	Status*	Further Review Needed/Comments**	Resolved*	2/26/2015	Status*	Further Review Needed/Comments**	Resolved*	3/24/2015	Status*	Further Review Needed/Comments**	Resolved*
116	M - 4.3.1	40	SWRCB Permit Coverage	ongoing	✓	FRN	I-a		✓	FRN	I-b		✓	FRN	I-c		✓	FRN	I-d	
117	M - 4.3.1	41	Surface Water Collection System	ongoing																
118	M - 4.3.1	42	Surface Water Quality Monitoring	ongoing																
119	M - 4.3.1	43	Sediment Basin Maintenance	ongoing																
120	M - 4.3.1	44	Final Landfill Cover	ongoing																
121	M - 4.3.1	45	Erosion Control Plan	ongoing	✓	FRN	I-a		✓	FRN	I-b		✓	FRN	I-c		✓	FRN	I-d	
122	M - 4.3.1	46	Preventive Maintenance Program	ongoing	✓	FRN	I-a										✓	FRN	I-d	
123	M - 4.3.2	49	Interception of Groundwater Seepage	ongoing					✓	C	NONE						✓	C	NONE	
124	M - 4.3.2	50	LCRS/Leachate Monitoring	ongoing																
125	M - 4.3.2	51	LCRS Monitoring	ongoing																
126																				
127	Biologist																			
128																				
129																				
130	M - 4.1.1	6	Slope Erosion Control	ongoing	✓	FRN	I-a		✓	FRN	I-b		✓	FRN	I-c		✓	FRN	I-d	
131	M - 4.2.11	23	Revegetation/Excavation	ongoing	✓	FRN	I-a		✓	FRN	I-b		✓	FRN	I-c		✓	FRN	I-d	
132	M - 4.2.12		Temporary Vegetation Cover	ongoing	✓	FRN	I-a		✓	FRN	I-b		✓	FRN	I-c		✓	FRN	I-d	

* C = Compliant, NC = Non-Compliant, FRN = Further Review Needed, R = Resolved

** See Appendix I for Comments

Checkmark = Condition or mitigation was monitored

/ = Yearly or non-ongoing monitoring frequency

Sunshine Canyon Landfill City Mitigation Monitoring Summary

(01-01-2015 through 03-31-2015)

Line #	Reference #	Mitigation #	City Mitigation Measures and Conditions Monitored by Discipline	Monitoring Frequency	First Quarter															
					1/7/2015	Status*	Further Review Needed/Comments**	Resolved*	2/13/2015	Status*	Further Review Needed/Comments**	Resolved*	2/26/2015	Status*	Further Review Needed/Comments**	Resolved*	3/24/2015	Status*	Further Review Needed/Comments**	Resolved*
133	M - 4.4.1	60	Coastal Sage Scrub Mitigation Plan	ongoing					✓	C	I-b		✓	C	I-c		✓	C	I-d	
134	M - 4.4.1	61	Coastal Sage Scrub Seeding	ongoing																
135	M - 4.4.1	62	Mariposa Lily Mitigation Plan	ongoing	/				/				/							
136	M - 4.4.1	63	San Diego Horned Lizard Mitigation	ongoing	/				✓	FRN	I-b		✓	FRN	I-c		✓	FRN	I-d	
137	M - 4.4.1	64	California Gnatcatcher Surveys	ongoing	/				/				/				/			
138	M - 4.4.1	65	Least Bell's Vireo Surveys	ongoing	/				/				/				/			
139	M - 4.4.1	66	Western Burrowing Owl Surveys	ongoing	/				/				/				/			
140	M - 4.4.1	67	Migratory Bird Treaty Act	ongoing	/				/				✓	FRN	I-c		/			
141	M - 4.4.1	68	Raptor Nests Habitat	ongoing	/				/				/				/			
142	M - 4.4.3	72	Native Tree Mitigation	ongoing																
143	M - 4.4.3	73	Nonnative Tree Mitigation	status																
144	M - 4.4.3	74	Mitigation Tree Planting	ongoing																
145	M - 4.4.3	75	Tree Planting Mitigation Site Prep	ongoing																
146	M - 4.4.3	76	Poultry Wire Screen	ongoing																
147	M - 4.4.3	77	Backfill Material	ongoing																
148	M - 4.4.3	78	Tree Planting Procedure	ongoing																
149	M - 4.4.3	79	Tree Area Mulching	ongoing																

* C = Compliant, NC = Non-Compliant, FRN = Further Review Needed, R = Resolved

** See Appendix I for Comments

Checkmark = Condition or mitigation was monitored

/ = Yearly or non-ongoing monitoring frequency

Sunshine Canyon Landfill City Mitigation Monitoring Summary

(01-01-2015 through 03-31-2015)

Line #	Reference #	Mitigation #	City Mitigation Measures and Conditions Monitored by Discipline	Monitoring Frequency	First Quarter															
					1/7/2015	Status*	Further Review Needed/Comments**	Resolved*	2/13/2015	Status*	Further Review Needed/Comments**	Resolved*	2/26/2015	Status*	Further Review Needed/Comments**	Resolved*	3/24/2015	Status*	Further Review Needed/Comments**	Resolved*
150	M - 4.4.3	80	Tree Irrigation/Fertilization	ongoing																
151	M - 4.4.3	81	Irrigation System	ongoing																
152	M - 4.4.3	82	Annual Tree Monitoring Report	annual									✓	FRN	I-c					
153	M - 4.9.2	96	Vector Activity Monitoring	ongoing																
154	M - 4.9.2	97	Vector Elimination	ongoing																
155	M - 4.9.2	98	Fly Control	ongoing																
156	M - 4.9.2	99	Rodent Control	ongoing																
157	M - 4.9.2	100	Operational Vector-Limiting Activity	ongoing																
158	M - 4.9.2	101	Equipment Cleanliness/Maintenance	ongoing																
159	M - 4.9.2	102	Storage of Vector-Attracting Items	ongoing																
160	M - 4.9.2	103	Salvaged Material Storage-Vector Control	ongoing	✓	C	NONE													
161	M - 4.9.2	104	Periodic Vector Inspections	ongoing																
162	M - 4.9.2	105	Implementation of Vector Control Measures	ongoing																
163																				
164	Air Quality & Noise Specialist																			
165																				
166																				

* C = Compliant, NC = Non-Compliant, FRN = Further Review Needed, R = Resolved

** See Appendix I for Comments

Checkmark = Condition or mitigation was monitored

/ = Yearly or non-ongoing monitoring frequency

Sunshine Canyon Landfill City Mitigation Monitoring Summary

(01-01-2015 through 03-31-2015)

Line #	Reference #	Mitigation #	City Mitigation Measures and Conditions Monitored by Discipline	Monitoring Frequency	First Quarter															
					1/7/2015	Status*	Further Review Needed/Comments**	Resolved*	2/13/2015	Status*	Further Review Needed/Comments**	Resolved*	2/26/2015	Status*	Further Review Needed/Comments**	Resolved*	3/24/2015	Status*	Further Review Needed/Comments**	Resolved*
167	M - 4.2.11	19	Emissions Mitigation Measures	ongoing	✓	C	NONE		✓	C	NONE		✓	C	NONE		✓	C	NONE	
168	M - 4.2.11	19	Construction Curtailing due to Pollution	ongoing	/	NA	NONE		/	NA	NONE		/	NA	NONE		/	NA	NONE	
169	M - 4.2.11	20	Dust Lofting Minimization	ongoing	✓	FRN	I-a										✓	FRN	I-d	
170	M - 4.2.11	21	Wind Speed Monitoring	ongoing	✓	C	NONE		✓	C	NONE		✓	C	NONE		✓	C	NONE	
171	M - 4.2.11	22	Grading-Dust Reduction	ongoing	✓	C	NONE		✓	C	NONE		✓	C	NONE		✓	C	NONE	
172	M - 4.2.12	24	Construction Equipment Maintenance	ongoing	✓	C	NONE		✓	C	NONE		✓	C	NONE		✓	C	NONE	
173	M - 4.2.12		Construction Curtailing due to Pollution	ongoing	/	NA	NONE		/	NA	NONE		/	NA	NONE		/	NA	NONE	
174	M - 4.2.12	25	Refuse Trucks-Maintenance	ongoing																
175	M - 4.2.12		Refuse Trucks-Engine	ongoing																
176	M - 4.2.12		Refuse Trucks-Fee Schedule	ongoing																
177	M - 4.2.12		Refuse Trucks-Fee Schedule Delivery Time	ongoing																
178	M - 4.2.12		Refuse Trucks-Idling	ongoing																
179	M - 4.2.12		Refuse Trucks-Emissions	ongoing																
180	M - 4.2.12	26	Truck Travel and Fugitive Dust Emissions	ongoing																
181	M - 4.2.12		Truck Travel and Fugitive Dust Emissions	ongoing																
182	M - 4.2.12		Truck Travel and Fugitive Dust Emissions	ongoing																
183	M - 4.2.12		Truck Travel and Fugitive Dust Emissions	ongoing																

* C = Compliant, NC = Non-Compliant, FRN = Further Review Needed, R = Resolved

** See Appendix I for Comments

Checkmark = Condition or mitigation was monitored

/ = Yearly or non-ongoing monitoring frequency

Sunshine Canyon Landfill City Mitigation Monitoring Summary

(01-01-2015 through 03-31-2015)

Line #	Reference #	Mitigation #	City Mitigation Measures and Conditions Monitored by Discipline	Monitoring Frequency	First Quarter															
					1/7/2015	Status*	Further Review Needed/Comments**	Resolved*	2/13/2015	Status*	Further Review Needed/Comments**	Resolved*	2/26/2015	Status*	Further Review Needed/Comments**	Resolved*	3/24/2015	Status*	Further Review Needed/Comments**	Resolved*
184	M - 4.5.2	83	Landfill Hours	info	/				/				/				/			
185	M - 4.5.2	84	Landfill Equipment-Noise Reduction	ongoing	✓	C	NONE		✓	C	NONE		✓	C	NONE		✓	C	NONE	
186																				
187	Hydrology, Hazardous Waste / Risk of Upset																			
188																				
189																				
190	M - 4.3.2	53	Groundwater Monitoring Wells	ongoing																
191	M - 4.3.2	58	Operation as Class III Landfill	ongoing	✓	C	NONE		✓	C	NONE		✓	C	NONE		✓	C	NONE	
192	M - 4.3.2	59	Underground Fuel Storage	ongoing	/	NA	NONE		/	NA	NONE		/	NA	NONE		/	NA	NONE	
193	M - 4.9.1	90	Refuse Inspection Program	ongoing																
194	M - 4.9.1	91	Hazardous Waste Load-Checking	status																
195	M - 4.9.1	93	Hazardous Waste Detection Training	status									✓	C	NONE					
196	M - 4.9.1	94	Spill Response Program	status					✓	FRN	I-b		✓	C	NONE					
197	M - 4.9.4	115	Safety Inspections/Checklists	ongoing									✓	C	NONE					
198	M - 4.9.4	118	Accident/Injury reports, Inspections	status									✓	C	NONE					
199	M - 4.9.4	121	Fire Prevention Plan	ongoing					✓	FRN	I-b									
200	M - 4.9.4	123	Personal Protective Equipment	ongoing									✓	C	NONE					

* C = Compliant, NC = Non-Compliant, FRN = Further Review Needed, R = Resolved

** See Appendix I for Comments

Checkmark = Condition or mitigation was monitored

/ = Yearly or non-ongoing monitoring frequency

Sunshine Canyon Landfill City Mitigation Monitoring Summary

(01-01-2015 through 03-31-2015)

Line #	Reference #	Mitigation #	City Mitigation Measures and Conditions Monitored by Discipline	Monitoring Frequency	First Quarter															
					1/7/2015	Status*	Further Review Needed/Comments**	Resolved*	2/13/2015	Status*	Further Review Needed/Comments**	Resolved*	2/26/2015	Status*	Further Review Needed/Comments**	Resolved*	3/24/2015	Status*	Further Review Needed/Comments**	Resolved*
201	M - 4.9.4	125	Site Access/Fencing	ongoing	✓	FRN	I-a										✓	FRN	I-d	
202	M - 4.14.1	147	Fire Response Capabilities	ongoing									✓	C	NONE					
203	M - 4.14.1	148	Hydrant Installation	ongoing																
204																				
205	Archaeologist																			
206																				
207																				
208	M - 4.19.1	183	Archaeological Resurvey	ongoing	/	NA	NONE		/	NA	NONE		/	NA	NONE		✓	C	I-d	
209	M - 4.19.1	184	Onsite Archaeologist	ongoing	/	NA	NONE		/	NA	NONE		/	NA	NONE					
210	M - 4.19.1	185	Archaeological Resources	ongoing	/	NA	NONE		/	NA	NONE		/	NA	NONE					
211	M - 4.19.1	186	Archaeological Resources	ongoing	/	NA	NONE		/	NA	NONE		/	NA	NONE					
212																				
213	Paleontologist																			
214																				
215																				
216	M - 4.19.2	187	Paleontological Resources Resurvey	ongoing	/	NA	NONE		/	NA	NONE		/	NA	NONE		/	NA	NONE	
217	M - 4.19.2	188	Paleontological Resources Excavation	ongoing	/	NA	NONE		/	NA	NONE		/	NA	NONE					
218	M - 4.19.2	189	Paleontological Resources Training	ongoing	/	NA	NONE		/	NA	NONE		/	NA	NONE					

* C = Compliant, NC = Non-Compliant, FRN = Further Review Needed, R = Resolved

** See Appendix I for Comments

Checkmark = Condition or mitigation was monitored

/ = Yearly or non-ongoing monitoring frequency

Sunshine Canyon Landfill City Mitigation Monitoring Summary (01-01-2015 through 03-31-2015)

Line #	Reference #	Mitigation #	City Mitigation Measures and Conditions Monitored by Discipline	Monitoring Frequency	First Quarter															
					1/7/2015	Status*	Further Review Needed/Comments**	Resolved*	2/13/2015	Status*	Further Review Needed/Comments**	Resolved*	2/26/2015	Status*	Further Review Needed/Comments**	Resolved*	3/24/2015	Status*	Further Review Needed/Comments**	Resolved*
219	M - 4.19.2	190	Paleontological Resources Recovery	ongoing	/	NA	NONE		/	NA	NONE		/	NA	NONE					
220	M - 4.19.2	191	Paleontological Resources Inspection	ongoing	/	NA	NONE		✓	C	I-b		✓	C	I-c		✓	C	I-d	

* C = Compliant, NC = Non-Compliant, FRN = Further Review Needed, R = Resolved

** See Appendix I for Comments

Checkmark = Condition or mitigation was monitored

/ = Yearly or non-ongoing monitoring frequency

[This page is blank for printing]

Sunshine Canyon Landfill County Mitigation Monitoring Summary

(01-01-2015 through 03-31-2015)

Line #	Reference #	Mitigation #	County Mitigation Measures and Conditions Monitored by Discipline	Monitoring Frequency	First Quarter															
					1/7/2015	Status*	Further Review Needed/Comments*	Resolved*	2/13/2015	Status*	Further Review Needed/Comments*	Resolved*	2/26/2015	Status*	Further Review Needed/Comments*	Resolved*	3/2/2015	Status*	Further Review Needed/Comments*	Resolved*
1	Project Manager																			
2																				
3																				
4	Amendment 45.N - 1	45N	Daily Cover Materials	ongoing	✓	C	NONE		✓	C	NONE		✓	C	NONE		✓	C	NONE	
5	Amendment 45.N - 3	45N	Daily Cover Procedure	ongoing	✓	C	NONE		✓	C	NONE		✓	C	NONE		✓	C	NONE	
6	Amendment 45.N - 4.a	45N	Order for Abatement Status	ongoing	/		I-a		/		I-b		/		I-c		/		I-d	
7	Amendment 45.N - 4.c	45N	Odor Patrol Program	ongoing	/		I-a		/		I-b		/		I-c		/		I-d	
8	Amendment 45.N - 4.d	45N	Landfill Gas Mitigation Plan	ongoing	/		I-a		/		I-b		/		I-c		/		I-d	
9	Amendment 45.N - 5	45N	Dust and Odor Reports	ongoing	/		I-a		/		I-b		/		I-c		/		I-d	
10																				
11	Combined Site & Bridge Area -20.A	20.A	Joint Powers Authority	info	/				/				/				/			
12	Combined Site & Bridge Area -20.F	20.F	Mitigation Reporting and Monitoring Program Amendment	status	/				/				/				/			
13	Landfill Capacity - 27	27	Tipping Fees for Partial Loads/Peak Hours	status																
14	Grading & Drainage-41.A -.D	41A-D	Water Conservation	status	✓	C	NONE		✓	C	NONE		✓	C	NONE		✓	C	NONE	
15	Revegetation - 44.F	44.F	Revegetation	status	✓	FRN	I-a		✓	FRN	I-b		✓	FRN	I-c		✓	FRN	I-d	
16	Fugitive Dust - 45.B	45.B	Working Face Areas	ongoing	✓	C	NONE		✓	C	NONE		✓	C	NONE		✓	C	NONE	
17	Fugitive Dust - 45.F	45.F	Inactive Areas Monitoring	ongoing	✓	C	NONE		✓	C	NONE		✓	C	NONE		✓	C	NONE	
18	Fugitive Dust - 45.I	45.I	Cleaning of Roads	ongoing	✓	C	NONE		✓	C	NONE		✓	C	NONE		✓	C	NONE	
19	Litter Control - 46.A - .D	46A-D	Litter Control Program	ongoing	✓	C	NONE		✓	C	NONE		✓	C	NONE		✓	C	NONE	
20	Gas - 52	52	Landfill Gas Collection System	ongoing	✓	C	I-a		✓	C	I-b		✓	C	I-c		✓	C	I-d	
21	Traffic - 57	57	Traffic Improvements	status	✓	C	NONE		✓	C	NONE		✓	C	NONE		✓	C	NONE	

* C = Compliant, NC = Non-Compliant, FRN = Further Review Needed, R = Resolved

** See Appendix I for Comments

Checkmark = Condition or mitigation was monitored

/ = Yearly or non-ongoing monitoring frequency

Sunshine Canyon Landfill County Mitigation Monitoring Summary

(01-01-2015 through 03-31-2015)

Line #	Reference #	Mitigation #	County Mitigation Measures and Conditions Monitored by Discipline	Monitoring Frequency	First Quarter															
					1/7/2015	Status*	Further Review Needed/Comments*	Resolved*	2/13/2015	Status*	Further Review Needed/Comments*	Resolved*	2/26/2015	Status*	Further Review Needed/Comments*	Resolved*	3/24/2015	Status*	Further Review Needed/Comments*	Resolved*
22	Traffic - 60	60	Street Light Installation	status	✓	C	NONE		✓	C	NONE		✓	C	NONE		✓	C	NONE	
23	Traffic - 61	61	Traffic Minimization	ongoing	✓	C	NONE		✓	C	NONE		✓	C	NONE		✓	C	NONE	
24	Permittee Fees - 64 - 72	64-72	Permittee Fees	info	/				/				/				/			
25	Permittee Fees - 69	69	Permittee Fees-Contributions	info	/				/				/				/			
26	Permittee Fees - 70	70	Permittee Fees	info	/				/				/				/			
27	Permittee Fees - 72	72	Permittee Fees	info	/				/				/				/			
28	Alternative Fuel Vehicles - 77.A	77.A	Alternative Fuel Vehicles-Light Duty	status	✓	C	NONE		✓	C	NONE		✓	C	NONE		✓	C	NONE	
29	Alternative Fuel Vehicles - 77.B	77.B	Alternative Fuel Vehicles-Refuse/Collection Trucks	status	✓	C	NONE		✓	C	NONE		✓	C	NONE		✓	C	NONE	
30	Alternative Fuel Vehicles - 77.C	77.C	Alternative Fuel Vehicles-Report	status																
31	Alternative Fuel Vehicles - 77.D	77.D	Alternative Fuel Vehicles-heavy-duty, alternative fuel off-road equipment pilot program	status																
32	Alternative Fuel Vehicles - 77.E	77.E	Alternative Fuel Vehicles-Non-diesel Requirements	status																
33	Alternative Fuel Vehicles - 77.F	77.F	Alternative Fuel Vehicles-Non-diesel Truck Trip Requirements	status																
34	Alternative Fuel Vehicles - 77.G	77.G	Alternative Fuel Vehicles-Clean Fuel Demo Program	status																
35	Alternative Fuel Vehicles - 77.H	77.H	Alternative Fuel Vehicles-Compliance Evaluation	status																
36	Air Quality Monitoring - 81	81	Air Quality Monitoring-Testing	ongoing	/				/				/				/			
37			Air Quality Monitoring-Testing																	
38	IMP - Part I..A	IMP1	Air Quality Monitoring-Testing	ongoing	/				/				/				/			
39			Air Quality Monitoring-Testing																	
40	IMP - Part VI	IMP6	Air Quality Monitoring-Testing	ongoing	/				/				/				/			
41																				

* C = Compliant, NC = Non-Compliant, FRN = Further Review Needed, R = Resolved

** See Appendix I for Comments

Checkmark = Condition or mitigation was monitored

/ = Yearly or non-ongoing monitoring frequency

Sunshine Canyon Landfill County Mitigation Monitoring Summary (01-01-2015 through 03-31-2015)

Line #	Reference #	Mitigation #	County Mitigation Measures and Conditions Monitored by Discipline	Monitoring Frequency	First Quarter															
					1/1/2015	Status*	Further Review Needed/Comments*	Resolved*	2/13/2015	Status*	Further Review Needed/Comments*	Resolved*	2/26/2015	Status*	Further Review Needed/Comments*	Resolved*	3/24/2015	Status*	Further Review Needed/Comments*	Resolved*
42	MMRS-12/01/06		Mitigation Monitoring and Reporting Summary	info	/				/				/				/			
43			Permits																	
44	Geology - 1.15		Permittee's On-site Solid Waste Recovery and Recycling Program	status	/				/				/				/			
45	Surface Water - 2.09		SWRCB Permit Coverage	ongoing	/				/				/				/			
46	Surface Water - 2.15		Surface Water Preventive Maintenance Program	ongoing	✓	FRN	I-a										✓	FRN	I-d	
47	Groundwater - 3.13		Groundwater-LFG Migration Mitigation	ongoing																
48	Groundwater - 3.14		Groundwater-Monitoring Wells	ongoing																
49	BIOTA – 4.05		Annual Fee Submission for SEA Studies	status	/				/				/				/			
50	BIOTA – 4.06		Buffer Zone Maintenance as Nature Preserve	ongoing	✓	C	NONE		✓	C	NONE		✓	C	NONE		✓	C	NONE	
51	BIOTA – 4.07		Buffer Zone Maintenance-Vegetation	ongoing	✓	C	NONE		✓	C	NONE		✓	C	NONE		✓	C	NONE	
52	BIOTA – 4.08		Ridgeline Maintenance-Remain Undisturbed	ongoing	✓	C	NONE		✓	C	NONE		✓	C	NONE		✓	C	NONE	
53	BIOTA – 4.47		Cleaning of Equipment	ongoing																
54	BIOTA – 4.48		Monitoring of Vector-Attracting Items	ongoing																
55	BIOTA – 4.49		Salvaged Material Storage-Vector Control	ongoing	✓	C	NONE		✓	C	NONE		✓	C	NONE		✓	C	NONE	
56	BIOTA – 4.50		Vector Activity Monitoring	ongoing	✓	C	NONE		✓	C	NONE		✓	C	NONE		✓	C	NONE	
57	Air Quality - 6.03		Dust Emission Minimization	ongoing																
58	Air Quality - 6.04		Usage of Cut Material for Cover Operations in Accordance with SCAQMD/DOPW Requirements	ongoing	✓	C	NONE		✓	C	NONE		✓	C	NONE		✓	C	NONE	
59	Air Quality - 6.05		Landfill Gas Control/Extraction System/Monitoring	info	/				/				/				/			
60	Air Quality - 6.06		Flaring Systems	ongoing	/				/				/				/			
61	Air Quality - 6.07			info	/				/				/				/			

* C = Compliant, NC = Non-Compliant, FRN = Further Review Needed, R = Resolved

** See Appendix I for Comments

Checkmark = Condition or mitigation was monitored

/ = Yearly or non-ongoing monitoring frequency

Sunshine Canyon Landfill County Mitigation Monitoring Summary

(01-01-2015 through 03-31-2015)

Line #	Reference #	Mitigation #	County Mitigation Measures and Conditions Monitored by Discipline	Monitoring Frequency	First Quarter															
					1/7/2015	Status*	Further Review Needed/Comments*	Resolved*	2/13/2015	Status*	Further Review Needed/Comments*	Resolved*	2/26/2015	Status*	Further Review Needed/Comments*	Resolved*	3/24/2015	Status*	Further Review Needed/Comments*	Resolved*
62	Air Quality - 6.08		Management of Truck Arrivals	ongoing																
63	Air Quality - 6.10		Refuse Truck Mitigation	status																
64	Air Quality - 6.11		Light Duty Alternative Fuel Vehicles	status	✓	C	NONE		✓	C	NONE		✓	C	NONE		✓	C	NONE	
65	Air Quality - 6.11		Alternative Fuel Refuse Collection/ Transfer Trucks	status																
66	Air Quality - 6.11		Alternative Fuel Vehicle Report Submission	status																
67	Air Quality - 6.11		Heavy-duty, Alternative Fuel Off-Road Equipment Pilot Program	status																
68	Air Quality - 6.11		Non-Diesel, Alternative Fuel Vehicles- Transfer/Collection Trucks	status																
69	Air Quality - 6.11		Non-Diesel, Alternative Fuel Vehicles Truck Trips	status																
70	Air Quality - 6.11		Clean Fuel Demonstration Program	status																
71	Air Quality - 6.11		Compliance Evaluation	status																
72	Odor/Landfill Gas – 7.01		Landfill Gas Escape Prevention	ongoing	✓	C	NONE		✓	C	NONE		✓	C	NONE		✓	C	NONE	
73	Odor/Landfill Gas – 7.02		Landfill Gas Collection System	ongoing	✓	C	NONE		✓	C	NONE		✓	C	NONE		✓	C	NONE	
74	Odor/Landfill Gas – 7.04		Gas Collection/Flare System Risk Mitigation	ongoing																
75	Odor/Landfill Gas – 7.05		Wellhead Awareness	status	✓	C	NONE		✓	C	NONE		✓	C	NONE		✓	C	NONE	
76	Odor/Landfill Gas – 7.06		Odor Control Measures	ongoing	✓	FRN	I-a						✓	FRN	I-c		✓	FRN	I-d	
77	Odor/Landfill Gas – 7.07		Gas Recovery and Sale	status	✓	C	I-a		✓	C	I-b		✓	C	I-c		✓	C	I-d	
78	Traffic/Circulation – 8.03		Street Light Installation	status	/						/				/		✓	C	NONE	
79	Traffic/Circulation – 8.04		Truck Traffic Minimization	status																
80	Traffic/Circulation – 8.08		Tipping Fees for Partial Loads/Peak Hours	status																
81	Traffic/Circulation – 8.10		Nighttime Landfill Operations Feasibility	status	/				/				/				/			

* C = Compliant, NC = Non-Compliant, FRN = Further Review Needed, R = Resolved

** See Appendix I for Comments

Checkmark = Condition or mitigation was monitored

/ = Yearly or non-ongoing monitoring frequency

Sunshine Canyon Landfill County Mitigation Monitoring Summary

(01-01-2015 through 03-31-2015)

Line #	Reference #	Mitigation #	County Mitigation Measures and Conditions Monitored by Discipline	Monitoring Frequency	First Quarter															
					1/7/2015	Status*	Further Review Needed/Comments*	Resolved*	2/13/2015	Status*	Further Review Needed/Comments*	Resolved*	2/26/2015	Status*	Further Review Needed/Comments*	Resolved*	3/24/2015	Status*	Further Review Needed/Comments*	Resolved*
82	Traffic/Circulation – 8.11		Parking Management along San Fernando Road	status	/				/				/				/			
83	Traffic/Circulation – 8.13		Adequate Queuing	status																
84	Visual – 10.03		Landfill Flare Locations	status	/				/				/				/			
85	Visual – 10.04		Confinement of Excavation Cover Material	status																
86	Visual – 10.05		Lighting Requirements	status																
87	Visual – 10.11		Litter Control Program	ongoing																
88	Visual – 10.11		Solid Waste Load Procedures-Improperly Covered/Contained	ongoing																
89	Visual – 10.11		Debris Removal at Entrance	ongoing																
90	Visual – 10.11		Litter Control-Fencing	ongoing																
91	Visual – 10.11		Periodic Litter Pickup	ongoing	✓	FRN	I-a													
92	Visual – 10.11		Litter Control-Additional Measures	ongoing																
93	Visual – 10.12		Discharge Control/Litter Recovery	status																
94	Water Conserv. - 11.01		Water Conservation	ongoing	✓	C	NONE		✓	C	NONE		✓	C	NONE		✓	C	NONE	
95	Recycling - 14.01		On-site Waste Diversion/Recycling	ongoing	✓	C	NONE		✓	C	NONE		✓	C	NONE		✓	C	NONE	
96	Recycling - 14.03		Tonnage Disposal Determination	info	/				/				/				/			
97	Recycling - 14.04		Recycling-Variou Tasks	info	/				/				/				/			
98			Clean Dirt Procedures																	
99	Site - 15.11		Reclaimed Water Utilization	status	/				/				/				/			
100	Site - 15.12		Water Conservation Measures	ongoing	✓	C	NONE		✓	C	NONE		✓	C	NONE		✓	C	NONE	
101	Admin Rpts/Pgms - 17.4		Operation Compliance	info	/				/				/				/			

* C = Compliant, NC = Non-Compliant, FRN = Further Review Needed, R = Resolved

** See Appendix I for Comments

Checkmark = Condition or mitigation was monitored

/ = Yearly or non-ongoing monitoring frequency

Sunshine Canyon Landfill County Mitigation Monitoring Summary (01-01-2015 through 03-31-2015)

Line #	Reference #	Mitigation #	County Mitigation Measures and Conditions Monitored by Discipline	Monitoring Frequency	First Quarter															
					1/1/2015	Status*	Further Review Needed/Comments*	Resolved*	2/1/2015	Status*	Further Review Needed/Comments*	Resolved*	2/26/2015	Status*	Further Review Needed/Comments*	Resolved*	3/24/2015	Status*	Further Review Needed/Comments*	Resolved*
102	Admin Rpts/Pgms -17.10		Fill Sequencing Plans	status																
103	Admin Rpts/Pgms-17.15		Quarterly Newsletter	status																
104	Landfill Operation - 18.7		Graffiti Removal/Deterrent Plan	ongoing	✓	C	NONE		✓	C	NONE		✓	C	NONE		✓	C	NONE	
122																				
123	Civil & Geotechnical Engineer																			
124																				
125																				
126	Revegetation - 44.C	44.C	Cut Slope Requirements	ongoing	✓	C	NONE		✓	C	NONE		✓	C	NONE		✓	C	NONE	
127																				
128	Geology - 1.01		Survey Monument Locations	ongoing																
129	Geology - 1.02		Seismic Design	ongoing																
130	Geology - 1.03		Maximum Refuse Slope Gradients	ongoing																
131	Geology - 1.04		Maximum Refuse Slope Gradients	ongoing																
132	Geology - 1.05		Unsuitable Material Procedures	ongoing																
133	Geology - 1.06		Grading Activities Procedures	ongoing																
134	Geology - 1.07		Grading Activities Procedures	ongoing					✓	FRN	I-b		✓	FRN	I-c		✓	FRN	I-d	
135	Geology - 1.09		Outer Perimeter Ridgeline Requirements	info																
136	Geology - 1.12		Soil Stabilization	ongoing																
137	Geology - 1.16		Checklists/Surveys Following Earthquake	upon event	✓	FRN	I-a													
138	Geology - 1.18		Alluvium-Removal/Replacement	ongoing																
139	Geology - 1.19		Landfill Design/Construction	ongoing																

* C = Compliant, NC = Non-Compliant, FRN = Further Review Needed, R = Resolved

** See Appendix I for Comments

Checkmark = Condition or mitigation was monitored

/ = Yearly or non-ongoing monitoring frequency

Sunshine Canyon Landfill County Mitigation Monitoring Summary (01-01-2015 through 03-31-2015)

Line #	Reference #	Mitigation #	County Mitigation Measures and Conditions Monitored by Discipline	Monitoring Frequency	First Quarter															
					1/7/2015	Status*	Further Review Needed/Comments*	Resolved*	2/13/2015	Status*	Further Review Needed/Comments*	Resolved*	2/26/2015	Status*	Further Review Needed/Comments*	Resolved*	3/24/2015	Status*	Further Review Needed/Comments*	Resolved*
140	Geology - 1.20		Landfill Design/Construction-Foundations	ongoing																
141	Surface Water - 2.03		Surface Drainage Control Facilities	ongoing	✓	FRN	I-a													
142	Surface Water - 2.05		Underdrain Requirements	ongoing																
143	Surface Water - 2.06		Final Cover for Surface Water Runoff Control	ongoing																
144	Groundwater - 3.02		Liner System Requirements	ongoing																
145	Groundwater - 3.04		Onsite Inspector for Liner Installation	ongoing																
146	Groundwater - 3.09		Alluvium Removal	ongoing																
147	Visual – 10.01		Landfill Elevations	ongoing					✓	FRN	I-b						✓	FRN	I-d	
148	Visual – 10.02		Final Fill Elevations	ongoing					✓	FRN	I-b						✓	FRN	I-d	
149																				
150	Hydrologist																			
151																				
152																				
153	Grading & Drainage - 38	38	Installation of Drainage Structures	ongoing																
154																				
155	Geology - 1.17		Landfill Design/Construction-Seismic	ongoing																
156	Surface Water - 2.01		Surface Water Runoff Interception	ongoing																
157	Surface Water - 2.02		Surface Water Runoff Collection	ongoing																
158	Surface Water - 2.03		Surface Drainage Control-Maintenance	ongoing	✓	FRN	I-a													
159	Surface Water - 2-04		Sedimentation Basin Capabilities	ongoing																
160	Surface Water - 2.05		Underdrain Placement	ongoing																

* C = Compliant, NC = Non-Compliant, FRN = Further Review Needed, R = Resolved

** See Appendix I for Comments

Checkmark = Condition or mitigation was monitored

/ = Yearly or non-ongoing monitoring frequency

Sunshine Canyon Landfill County Mitigation Monitoring Summary (01-01-2015 through 03-31-2015)

Line #	Reference #	Mitigation #	County Mitigation Measures and Conditions Monitored by Discipline	Monitoring Frequency	First Quarter															
					1/7/2015	Status*	Further Review Needed/Comments*	Resolved*	2/13/2015	Status*	Further Review Needed/Comments*	Resolved*	2/26/2015	Status*	Further Review Needed/Comments*	Resolved*	3/24/2015	Status*	Further Review Needed/Comments*	Resolved*
161	Surface Water - 2.07		Drainage Control System Design Approval	ongoing																
162	Surface Water - 2.08		Surface Water Runoff-Drainage System	ongoing																
163	Surface Water - 2.10		Surface Water Collection System-Monitoring	ongoing																
164	Surface Water - 2.11		Surface Water Quality-Collection/Monitoring	ongoing																
165	Surface Water - 2.12		Permanent/Temporary Drainage Facilities	ongoing					✓	FRN	I-b						✓	FRN	I-d	
166	Surface Water - 2.13		Permanent/Temporary Drainage Facilities	ongoing																
167	Surface Water - 2.14		Erosion Control Plan	ongoing	✓	FRN	I-a		✓	FRN	I-b		✓	FRN	I-c		✓	FRN	I-d	
168	Groundwater - 3.03		Interception of Groundwater Seepage	ongoing																
169	Groundwater - 3.06		Monitoring Wells	ongoing																
170																				
171	Biologist																			
172																				
173																				
174	Revegetation - 44	44	Revegetation/Cover Requirements	ongoing																
175	Revegetation - 44.A	44.A	Temporary Hydroseed Vegetation	ongoing	✓	FRN	I-a		✓	FRN	I-b		✓	FRN	I-c		✓	FRN	I-d	
176	Revegetation - 44.B	44.B	Interim Reclamation/Revegetation Plan-Sold Waste	ongoing																
177	Revegetation - 44.D	44.D	Final Fill Slope Requirements	ongoing																
178	Revegetation - 44.E	44.E		ongoing																
179																				
180	Geology - 1.13		Drainage Plan Approval	ongoing	✓	FRN	I-a		✓	FRN	I-b		✓	FRN	I-c		✓	FRN	I-d	
181	Geology - 1.14		Personnel Retention for Monitoring Soil Erosion	ongoing	✓	FRN	I-a		✓	FRN	I-b		✓	FRN	I-c		✓	FRN	I-d	

* C = Compliant, NC = Non-Compliant, FRN = Further Review Needed, R = Resolved

** See Appendix I for Comments

Checkmark = Condition or mitigation was monitored

/ = Yearly or non-ongoing monitoring frequency

Sunshine Canyon Landfill County Mitigation Monitoring Summary

(01-01-2015 through 03-31-2015)

Line #	Reference #	Mitigation #	County Mitigation Measures and Conditions Monitored by Discipline	Monitoring Frequency	First Quarter															
					1/7/2015	Status*	Further Review Needed/Comments*	Resolved*	2/13/2015	Status*	Further Review Needed/Comments*	Resolved*	2/26/2015	Status*	Further Review Needed/Comments*	Resolved*	3/24/2015	Status*	Further Review Needed/Comments*	Resolved*
182	Groundwater - 3.11		Irrigation/Revegetation Management-Personnel Retention	ongoing																
183	BIOTA - 4.10		Oak Tree Permit	ongoing	✓	C	NONE		✓	C	NONE		✓	C	NONE		✓	C	NONE	
184	BIOTA - 4.11		Oak Tree Mitigation Plan	ongoing	✓	C	NONE		✓	C	NONE		✓	C	NONE		✓	C	NONE	
185	BIOTA - 4.13		Oak Tree Mitigation Counting	ongoing	✓	C	NONE		✓	C	NONE		✓	FRN	I-c		✓	C	NONE	
186	BIOTA - 4.20		Poultry Wire Screen	ongoing	✓	C	NONE		✓	C	NONE		✓	C	NONE		✓	C	NONE	
187	BIOTA - 4.24		Drip Irrigation	ongoing	✓	C	NONE		✓	C	NONE		✓	C	NONE		✓	C	NONE	
188	BIOTA - 4.27		Coastal Sage Scrub Mitigation Plan	ongoing	✓	FRN	I-a		✓	FRN	I-b		✓	FRN	I-c					
189	BIOTA - 4.28		Coastal Sage Scrub Seeding	ongoing																
190	BIOTA - 4.29		San Diego Horned Lizard Mitigation	ongoing	✓	C	NONE		✓	FRN	I-b		✓	FRN	I-c		✓	FRN	I-d	
191	BIOTA - 4.30		California Gnatcatcher Surveys	ongoing	✓	C	NONE		✓	C	NONE		✓	C	NONE		✓	FRN	I-d	
192	BIOTA - 4.31		Least Bell's Vireo Surveys	ongoing	✓	C	NONE		✓	C	NONE		✓	C	NONE		✓	C	NONE	
193	BIOTA - 4.32		Western Burrowing Owl Surveys	ongoing	✓	C	NONE		✓	C	NONE		✓	C	NONE		✓	C	NONE	
194	BIOTA - 4.33		Migratory Bird Treaty Act	ongoing	✓	C	NONE		✓	C	NONE		✓	FRN	I-c		✓	FRN	I-d	
195	BIOTA - 4.34		Raptor Nests Habitat	ongoing	✓	C	NONE		✓	C	NONE		✓	C	NONE		✓	FRN	I-d	
196	BIOTA - 4.36		Personnel Retention for Monitoring Revegetation Plan	ongoing																
197	BIOTA - 4.37		Personnel Retention for Monitoring Revegetation Plan, Onsite Plants	status																
198	BIOTA - 4.38		Green Waste Material	ongoing																
199	BIOTA - 4.39		Revegetation of Slopes/Fill Areas	ongoing																
200	BIOTA - 4.41		Revegetation Plan-Replacement Cover	ongoing																
201	BIOTA - 4.42		Interim Vegetation	ongoing	✓	FRN	I-a		✓	FRN	I-b		✓	FRN	I-c		✓	FRN	I-d	
202	BIOTA - 4.43		Replacement Riparian Habitat	status													✓	FRN	I-d	

* C = Compliant, NC = Non-Compliant, FRN = Further Review Needed, R = Resolved

** See Appendix I for Comments

Checkmark = Condition or mitigation was monitored

/ = Yearly or non-ongoing monitoring frequency

Sunshine Canyon Landfill County Mitigation Monitoring Summary (01-01-2015 through 03-31-2015)

Line #	Reference #	Mitigation #	County Mitigation Measures and Conditions Monitored by Discipline	Monitoring Frequency	First Quarter															
					1/17/2015	Status*	Further Review Needed/Comments*	Resolved*	2/13/2015	Status*	Further Review Needed/Comments*	Resolved*	2/26/2015	Status*	Further Review Needed/Comments*	Resolved*	3/24/2015	Status*	Further Review Needed/Comments*	Resolved*
203	Air Quality - 6.02		Dust Control	ongoing	✓	FRN	I-a		✓	FRN	I-b		✓	FRN	I-c		✓	FRN	I-d	
204	Visual – 10.06		Upper Ridge Planting/Revegetation	ongoing																
205	Visual – 10.07		Tree Planting Around Perimeter	ongoing																
206	Visual – 10.08		Cover/Revegetation Requirements	ongoing	✓	FRN	I-a		✓	FRN	I-b		✓	FRN	I-c		✓	FRN	I-d	
207	Visual – 10.08		Solid Waste Disposal Procedures	ongoing	✓	C	NONE		✓	C	NONE		✓	C	NONE		✓	C	NONE	
208	Visual – 10.08		Final Cut Slope Steepness	ongoing	✓	C	NONE		✓	C	NONE		✓	C	NONE		✓	C	NONE	
209	Visual – 10.08		Final Fill Slopes-Reclamation/Revegetation	status																
210	Visual – 10.08		Revegetation Requirements	status	✓	FRN	I-a		✓	FRN	I-b		✓	FRN	I-c		✓	FRN	I-d	
211	Visual – 10.09		Final Cover Composition Requirements	ongoing																
212	Visual – 10.10		Buffer Zone Maintenance	ongoing																
213	Water Conservation - 11.02		Plant Species	ongoing																
214	Fire Service - 12.01		Brush Clearance Measures	ongoing	✓	C	NONE		✓	C	NONE		✓	C	NONE		✓	C	NONE	
215																				
216	Air Quality & Noise Specialist																			
217																				
218																				
219	Fugitive Dust - 45.F	45.F	Fugitive Dust Monitoring	ongoing																
220	Fugitive Dust - 45.I	45.I	Paved Roads-Cleaning	ongoing	✓	C	NONE		✓	C	NONE		✓	C	NONE		✓	C	NONE	
221	Fugitive Dust - 45.N	45.N	Report Submission-Dust/Odor	every quarter																
222	Air Quality Monitoring - 81	81	Air Quality Monitoring-Tests	ongoing																

* C = Compliant, NC = Non-Compliant, FRN = Further Review Needed, R = Resolved

** See Appendix I for Comments

Checkmark = Condition or mitigation was monitored

/ = Yearly or non-ongoing monitoring frequency

Sunshine Canyon Landfill County Mitigation Monitoring Summary

(01-01-2015 through 03-31-2015)

Line #	Reference #	Mitigation #	County Mitigation Measures and Conditions Monitored by Discipline	Monitoring Frequency	First Quarter															
					1/7/2015	Status*	Further Review Needed/Comments*	Resolved*	2/13/2015	Status*	Further Review Needed/Comments*	Resolved*	2/26/2015	Status*	Further Review Needed/Comments*	Resolved*	3/24/2015	Status*	Further Review Needed/Comments*	Resolved*
223																				
224																				
225	Air Quality – 6.01		Fugitive Dust Aversion	ongoing	✓	C	NONE		✓	C	NONE		✓	C	NONE		✓	C	NONE	
226	Air Quality – 6.01		Working Face Requirements	ongoing	✓	C	NONE		✓	C	NONE		✓	C	NONE		✓	C	NONE	
227	Air Quality – 6.01		Erosion Control-Daily Cover	ongoing	✓	C	NONE		✓	C	NONE		✓	C	NONE		✓	C	NONE	
228	Air Quality – 6.01		Soil Stockpile Requirements	ongoing	✓	C	NONE		✓	C	NONE		✓	C	NONE		✓	C	NONE	
229	Air Quality – 6.01		Active Area Fill	ongoing	✓	C	NONE		✓	C	NONE		✓	C	NONE		✓	C	NONE	
230	Air Quality – 6.01		Soil Sealant	ongoing																
231	Air Quality – 6.01		Dust Emissions-Road Maintenance	ongoing	✓	C	NONE		✓	C	NONE		✓	C	NONE		✓	C	NONE	
232	Air Quality – 6.01		Access Roads-Paving	ongoing	✓	C	NONE		✓	C	NONE		✓	C	NONE		✓	C	NONE	
233	Air Quality – 6.01		Dust Generation-Dumping	ongoing	✓	C	NONE		✓	C	NONE		✓	C	NONE		✓	C	NONE	
234	Air Quality – 6.01		Water Tanks/Piping Maintenance	ongoing	✓	C	NONE		✓	C	NONE		✓	C	NONE		✓	C	NONE	
235	Air Quality – 6.01		Wind Speed Monitoring	ongoing	✓	C	NONE		✓	C	NONE		✓	C	NONE		✓	C	NONE	
236	Air Quality – 6.01		Report Submission-Dust/Odor	every quarter	/				/				/				/			
237	Odor/Landfill Gas – 7.03		Odor/Landfill Gas Monitoring Program	ongoing	/				/				/				/			
238	Odor/Landfill Gas – 7.03		Landfill Surface Sampling	ongoing	/				/				/				/			
239	Odor/Landfill Gas – 7.03		Landfill Perimeter Air Samples	ongoing	/				/				/				/			
240	Odor/Landfill Gas – 7.03		Landfill Surface Monitoring	ongoing	/				/				/				/			
241	Odor/Landfill Gas – 7.03		LFG Collection System Monitoring	ongoing	/				/				/				/			
242	Noise – 9.01		Landfill Access/Operation	info	/				/				/				/			

* C = Compliant, NC = Non-Compliant, FRN = Further Review Needed, R = Resolved

** See Appendix I for Comments

Checkmark = Condition or mitigation was monitored

/ = Yearly or non-ongoing monitoring frequency

Sunshine Canyon Landfill County Mitigation Monitoring Summary (01-01-2015 through 03-31-2015)

Line #	Reference #	Mitigation #	County Mitigation Measures and Conditions Monitored by Discipline	Monitoring Frequency	First Quarter															
					1/7/2015	Status*	Further Review Needed/Comments*	Resolved*	2/13/2015	Status*	Further Review Needed/Comments*	Resolved*	2/26/2015	Status*	Further Review Needed/Comments*	Resolved*	3/24/2015	Status*	Further Review Needed/Comments*	Resolved*
243	Noise – 9.03		Landfill Equipment-Mufflers/Silencers	ongoing	✓	C	NONE		✓	C	NONE		✓	C	NONE		✓	C	NONE	
244	Admin Rpts/ Pgms-17.16		Air Quality Monitoring-Corrective Action Plan	ongoing	/				/				/				/			
245																				
246																				
247	Hydrology, Hazardous Waste / Risk of Upset																			
248																				
249																				
250	IMP - Part IV.E	IMP4	Load Inspection-Random Manual	ongoing																
251																				
252	Groundwater - 3.05		Leachate Collection and Removal System	ongoing																
253	Groundwater - 3.15		Underground Diesel Fuel Storage Tanks	ongoing	/	NA	NONE		/	NA	NONE		/	NA	NONE		/	NA	NONE	
254	Fire Service - 12.02		On-site Fire Response Capabilities-Operating Equipment	ongoing	✓	C	NONE													
255	Fire Service - 12.03		On-site Fire Response Capabilities-Roads/Water	ongoing					✓	FRN	I-b									
256	Fire Service - 12.04		On-site Fuel Storage Tanks-Permit Issuance	ongoing																
257	Fire Service - 12.05		Building Limits	ongoing																
258	Fire Service - 12.06		Methane Gas Monitoring-On-site Structures	ongoing	✓	C	NONE													
259	Hazardous Materials – 13.02		Waste Load Checking Program	ongoing																
260	Hazardous Materials – 13.05		Hazardous Waste Disposal	ongoing	✓	C	NONE													
261	Hazardous Materials – 13.10		Hazardous Waste-Procedures	ongoing																
262	Hazardous Materials – 13.11		Spill Response Program	ongoing					✓	FRN	I-b									
263	Safety - 16.02		Injury and Illness Prevention Program	status																

* C = Compliant, NC = Non-Compliant, FRN = Further Review Needed, R = Resolved

** See Appendix I for Comments

Checkmark = Condition or mitigation was monitored

/ = Yearly or non-ongoing monitoring frequency

Sunshine Canyon Landfill County Mitigation Monitoring Summary

(01-01-2015 through 03-31-2015)

Line #	Reference #	Mitigation #	County Mitigation Measures and Conditions Monitored by Discipline	Monitoring Frequency	First Quarter															
					1/7/2015	Status*	Further Review Needed/Comments*	Resolved*	2/13/2015	Status*	Further Review Needed/Comments*	Resolved*	2/26/2015	Status*	Further Review Needed/Comments*	Resolved*	3/24/2015	Status*	Further Review Needed/Comments*	Resolved*
264	Safety - 16.03		Working Conditions-Monitoring	status																
265	Safety - 16.04		Inspection Checklist-Work Area Exposure	status																
266	Safety - 16.07		Accident/Injury Reports	status																
267	Safety - 16.08		First-aid Kits	ongoing																
268	Safety - 16.10		Lockout/Blackout Procedures	status																
269	Safety - 16.11		Personal Protective Equipment	status																
270	Landfill Operation - 18.8		Prohibited Waste Procedures	ongoing																
271																				
272	Archaeologist																			
273																				
274																				
275	Ecological Significance - 62	62	Archaeological/Paleontological Identification/Conservation Program	ongoing													✓	C	I-d	
276	IMP - Part VII.B	IMP7	Archaeological/Paleontological Report Submit	ongoing	/	NA	NONE		/	NA	NONE		/	NA	NONE		/	NA	NONE	
277	Archaeological – 5.01		Archaeological Resurvey	ongoing	/	NA	NONE		/	NA	NONE		/	NA	NONE		/	NA	NONE	
278	Archaeological – 5.02		Onsite Archaeologist	ongoing	/	NA	NONE		/	NA	NONE		/	NA	NONE		/	NA	NONE	
279	Archaeological – 5.03		Onsite Paleontologist	ongoing					✓	C	I-b		✓	C	I-c		✓	C	I-d	
280	Archaeological – 5.04		Archaeological/Paleontological Identification Instruction	ongoing	/	NA	NONE		/	NA	NONE		/	NA	NONE		/	NA	NONE	
281	Archaeological – 5.05		Archaeological Resource Curation	ongoing	/	NA	NONE		/	NA	NONE		/	NA	NONE		/	NA	NONE	
282																				
283	Paleontologist																			
284																				

* C = Compliant, NC = Non-Compliant, FRN = Further Review Needed, R = Resolved

** See Appendix I for Comments

Checkmark = Condition or mitigation was monitored

/ = Yearly or non-ongoing monitoring frequency

Sunshine Canyon Landfill County Mitigation Monitoring Summary (01-01-2015 through 03-31-2015)

Line #	Reference #	Mitigation #	County Mitigation Measures and Conditions Monitored by Discipline	Monitoring Frequency	First Quarter															
					1/7/2015	Status*	Further Review Needed/Comments*	Resolved*	2/13/2015	Status*	Further Review Needed/Comments*	Resolved*	2/26/2015	Status*	Further Review Needed/Comments*	Resolved*	3/24/2015	Status*	Further Review Needed/Comments*	Resolved*
285																				
286	Ecological Significance - 62	62	Archaeological/Paleontological -Material Identification/Conservation	ongoing					✓	C	I-b		✓	C	I-c		✓	C	I-d	
287	IMP - Part VII.B	IMP7	Archaeological/Paleontological-Report Submission	ongoing					✓	C	I-b		✓	C	I-c		✓	C	I-d	

* C = Compliant, NC = Non-Compliant, FRN = Further Review Needed, R = Resolved

** See Appendix I for Comments

Checkmark = Condition or mitigation was monitored

/ = Yearly or non-ongoing monitoring frequency

Appendix I

Further Review Needed-Comments/ I-a through I-d

First Quarter 2015 Site Visits

[This page is blank for printing]

Discipline	City Condition Reference # / Mitigation #	County Condition Reference # / Mitigation #	Responsible Agency	Further Review Needed-Comments
Project Manager	Q – B.2.c		City Planning	<p>I-a: The access road realignment construction had stopped for the rainy season. Jute netting and straw wattles were installed to provide run-off control. Hydroseeding was also done to control erosion. Three temporary sedimentation/retention basin were constructed between the condensate treatment facility and the terminal basin. The top basin showed erosion from the prior recent rains. Construction of the new truck scales were complete and they were operational.</p> <p>I-c: The top temporary retention basin had a washout of the downhill wall from the prior rainstorm. The other two basins were able to hold the flow and sediment. The condensate treatment plant was shut down and was being decommissioned. The Baker tanks were removed. Liquid was being recovered and sewered.</p> <p>I-d: The access road realignment construction had started again with multiple work areas from the condensate treatment site to the oil field access road. Prior to re-starting grading, Republic's biological consultant performed a survey for the San Diego horned lizard and nesting migratory birds. No biological concerns were found and the site was cleared to start grading. The rough grading of the pad was completed west of the new scales for the relocation of the offices.</p>
	Q - C.10.c		City Planning	<p>I-a and I-b: The gas-to energy facility was operating at maximum generation with no operational problems.</p> <p>I-c: There was a planned Edison outage that caused the plant to temporarily go down due to lack of air on the gas inlet control. Modifications were made and a redundant air control system was installed. The plant was operating at 85% capacity due to the flare blowers not having power.</p> <p>I-d: The gas-to-energy facility was operating at maximum generation with no operational problems.</p>
		Odor/Landfill Gas - 7.07	County Planning/SCAQMD SCL-LEA	I-a through I-d: See Q - C.10.c above.
		Gas - 52	County DPW EPD/SCL-LEA County Forester Fire Warden	I-a through I-d: See Q - C.10.c above.
		Revegetation - 44.F	County DPW EPD/ County Forester LARWQCB	I-a through I-d: See M - 4.1.1/6 below.

Discipline	City Condition Reference # / Mitigation #	County Condition Reference # / Mitigation #	Responsible Agency	Further Review Needed-Comments
Project Manager	M - 4.1.4 / 11		City Planning/ SCAQMD LARWQCB Cal Recycle LADBS PW-BOE	I-a: The replacement of the onsite seismic detector/monitor recorder has not been completed.
	T-4		City Planning, City Fire Department	I-c: The secondary access road from Deck C has deep ruts which could inhibit passenger vehicle use. Grading and placement of rock should be investigated.
	M - 4.2.12 / 28		City Planning/SCAQMD SCL-LEA	<p>I-a: Slopes adjacent to the realigned access road downstream of the temporary basin appeared to have had minor soil spill on the landfill road during the last rain.</p> <p>I-b: The upper temporary basin had major soil erosion during the last rains and was removed because of erosion damage. Two basins remain to handle the westside flow into the terminal basin.</p> <p>I-a and I-d: Gusty winds were causing dry areas of the landfill to have blowing dust. The use of soil sealant should be investigated.</p>

Discipline	City Condition Reference # / Mitigation #	County Condition Reference #/ Mitigation #	Responsible Agency	Further Review Needed-Comments
Project Manager	M - 4.2.13 / 33		City Planning/SCAQMD	<p>I-a: It was observed that the condensate treatment facility had strong odors that could be detected 30 to 50 feet away from the facility. Republic was notified of the observation. It was observed that the leachate and condensate holding tanks on the Old City South top deck had odors coming out of a top access hatch. Republic was notified of this condition. It was observed that a contractor's vacuum truck was pumping landfill liquids into the deep well of the sewer lift station. A strong localized odor was detected. Republic was notified of the condition. Republic staff stated that they would investigate the sources of odor and take any action required.</p> <p>I-c: It was detected that the sewer lift station had localized odors near the carbon filter drum. It was also observed that the main access road cattle guard crossing had localized gas odors. The condensate treatment facility was being decommissioned and had localized odors from open pipes and equipment. Republic staff stated they would investigate and take appropriate action.</p> <p>I-d: Fleeting odors were observed at two or three locations on Timber Ridge Drive and two locations on Mission Tierra Way. The odors resembled landfill liquids. Strong odors were observed at condensate sump CS-22. Liquid was ponding on the ground and in the lined drainage ditch. Republic staff was notified. Sump CS-22 lost its air supply and the contractor was directed to repair the air supply.</p>
	M -4.2.13/ 29, 30, 32, 34		City Planning/SCL-LEA/SCAQMD	I-a through I-d: Compliance with these mitigation measures concerning landfill gas monitoring and odor control and detection is being monitored by a multi-agency team led by the SCAQMD. Only obvious gas emission sources, lack of cover, or exposed trash resulting in odor and gas emissions observed during the monitoring visit will be reported. None of these were observed during the quarterly monitoring visits this period.
		Amendment 45.N - 4.a, 4.c, 4.d	County DPW-EPD	I-a through I-d: See M-4.2.13/29, 30, 32, and 34 above.
		Amendment 45.N - 5	County DPW-EPD	I-a through I-d: See M-4.2.13/29, 30, 32, and 34 above.
		Surface Water - 2.15	County DPW EPD/ LARWQCB, SCL- LEA	I-a and I-d: See M-4.3.1/46 below.
		Odor/Landfill Gas - 7.06	County DPW-EPD/SCL-LEA/SCAQMD	I-a, I-c, and I-d: See M-4.2.13/33 above.
	M - 4.4.2/69		City Planning	I-d: The Corps of Engineers is reviewing an agreement between the City and Republic for compliance with the Corps' requirements for wetland mitigation.

Discipline	City Condition Reference # / Mitigation #	County Condition Reference #/ Mitigation #	Responsible Agency	Further Review Needed-Comments
Project Manager	M - 4.9.3/112		City Planning	I-a: The adjacent native hillside to Basin A and B had wind-blown litter.
		Visual - 10.11	SCL-LEA	I-a: see M - 4.9.3/112 above.
Civil and Geotechnical Engineer	M - 4.1.1/2		City Building and Safety City Planning	I-b, I-c and I-d: See M - 4.1.1/5 below.
	M - 4.1.1/4		City Planning/LARWQCB Cal Recycle	I-b, I-c and I-d: See M - 4.1.1/5 below.
	M - 4.1.1/5		City Planning/ LARWQCB Cal Recycle	<p>I-b: The area west and to the south of the offices had a substantial amount of grading since the last monitoring. Republic's geotechnical consultant had installed horizontal subdrains to dewater areas of the hillside being graded. A buttress was designed and a report was submitted to the LARWQCB and the City Department of Building and Safety for approval. The geotechnical reports and grading plans were not available for review by the monitor.</p> <p>I-c: The potential concerns regarding the risk of groundwater lubricating a landslide lens and impacting the stability of the hillside was addressed by the placement of horizontal subdrains in the area west and south of the offices.</p> <p>I-d: Grading activities for the new realigned access road have resumed with excavation and filling of the area. It was noted that compaction tests with a nuclear gauge was being performed to ensure proper placement of fill. Water was used to control moisture of the soil and limit dust. Alluvium was removed from the area where the toe berm will be constructed and where the underdrain and liner will be installed. Final layout with elevation were not available for review.</p>
	M - 4.1.2/9		City Planning/ LARWQCB Cal Recycle	I-c: BMP were installed but a comprehensive plan to stabilize slopes to prevent erosion was not available to review.
	M - 4.1.4/11		City Planning	I-a: See 4.1.4/11 above under Project Manager.
		Geology - 1.16	County DPW EPD / County LEA	I-a: See 4.1.4/11 above.
	M - 4.1.5 / 12		City Planning/LARWQCB Cal Recycle	I-d: Alluvium soils were being removed. See M - 4.1.1/5 above.
	M - 4.14.1 / 155		City Planning/Cal Recycle PW-BOE LADBS City LEA	I-d: Construction of the access road realignment restarted in March 2015. The construction design drawing have not been available for review so compliance with this condition cannot be monitored or verified.

Discipline	City Condition Reference # / Mitigation #	County Condition Reference # / Mitigation #	Responsible Agency	Further Review Needed-Comments
Civil and Geotechnical Engineer	M - 4.18/ 178		City Planning/City LEA	I-d: This condition was not monitored. Documents showing current filled elevations should be available onsite for review.
Hydrologist	M-4.3.1/36		City Planning/ LARWQCB CalRecycle SCL-LEA PW-BOE	I-a: A lined run-off control basin upstream of cell CC-3A is still being used. The RWQCB approved this temporary basin last year which needs the water to be pumped out to drain. Temporary HDPE lined slope drainage V-ditches and concrete V-ditches and channels have been installed. It was also observed that there is no clear drainage pattern on the County top deck and the Old City North top deck. There are numerous low spots where water may pond and infiltrate.
		Surface Water – 2.03	County DPW EPD/ LARWQCB SCL-LEA	I-a: See M-4.3.1/36 above.
	M - 4.3.1/ 37, 38		City Planning/ LARWQCB CalRecycle SCL-LEA PW-BOE	I-b and I-d: It is assumed that the permanent drainage V-ditches and channels are designed in accordance with the referenced regulations. The design drawings and reports should be available for review.
		Surface Water - 2.12	County DPW EPD/ LARWQCB SCL-LEA	I-b and I-d: See M - 4.3.1/ 37, 38 above.
	M - 4.3.1 / 39		City Planning/LARWQCB Cal Recycle	I-b and I-d: A map showing areas that are at the final elevations and should have final cover should be available for review.
		Visual - 10.01	County DPW EPD	I-b and I-d: See M - 4.3.1/ 39 above.
		Visual - 10.02	County DPW EPD	I-b and I-d: See M - 4.3.1/ 39 above.
	M - 4.3.1/ 40, 45		City Planning/ LARWQCB CalRecycle SCL-LEA PW-BOE LADBS	I-a, I-b, and I-d: The erosion control plan should be available onsite for review. This plan should be a living document that keeps up with construction activities. I-c: The embankment separating the top basin of the three temporary cascading basins installed south of the condensate treatment plant between the access road and the slopes of the City south landfill failed. This resulted in that basin being eliminated and a smaller total capacity. The smaller capacity does not appear to be a problem for the overall performance of the drainage system. These basins are mainly fed by the new shotcrete drainage channel along the access road. The newly formed top basin is fed by a lined downchute.
		Surface Water - 2.14	LARWQCB / County DPW EPD	I-a through I-d: See M - 4.3.1/ 40, 45 above.

Discipline	City Condition Reference # / Mitigation #	County Condition Reference # / Mitigation #	Responsible Agency	Further Review Needed-Comments
Hydrologist	M - 4.3.1/ 46		City Planning/ LARWQCB CalRecycle PW-BOE	<p>I-a: A downhill drainage V-ditch near the county sage area and monitoring well P-245 was flowing water under the concrete sidewall of the westside drainage channel. This is in the area where we noted on previous monitoring visits the westside drainage channel in need of repair. This water intrusion could be the possible cause of the uplifting of the bottom of the channel and the cracking and spalling of the concrete sidewalls.</p> <p>Basin A had standing water near the risers It appears that the lower portion is blocked with soil. Basins A and D outlets were blocked with tumbleweed. The preventative maintenance plan should be available onsite for review along with reports of inspection of the structures and status for scheduling of necessary maintenance.</p> <p>I-d: Cracks on the shotcrete face of the terminal basin that were noted in earlier site monitoring visits are still open to infiltration. One of the long and wide HDPE-lined slope drainage channels on the City south landfill was uplifting from the wind. Additional hold-downs or modification of the type of hold-downs to protect the edge from lifting during high wind conditions was needed.</p>
Biologist	M - 4.1.1 / 6		City Planning/ LARWQCB CalRecycle SCL-LEA LADBS	I-a through I-d: The hydroseeding of interim or inactive slopes was completed in June of 2014 and jute netting and hydroseeding done in the access road realignment area in October and November of 2014. Due to the lack of rain, no irrigation, and other factors, the hydroseeding did not germinate until after rains in December 2014 through February 2015. Without using potable water for irrigation, the hydroseeding will have minimal success.
		Geology - 1.14	LARWQCB/ County Forester	I-a through I-d: See M - 4.1.1/6 above.
	M - 4.2.11 / 23		City Planning	I-a through I-d: See M - 4.1.1/6 above.
		Geology - 1.13	County DPW EPD/ County Forester LARWQCB	I-a through I-d: See M - 4.1.1/6 above.
	M - 4.2.12		SCL-LEA/ City Planning	I-a through I-d: See M - 4.1.1/6 above.
		Revegetation - 44.A	SCL-LEA/ County DPW EPD Regional Planning County Biologist	I-a through I-d: See M - 4.1.1/6 above.
		Biota - 4.42	SCL-LEA	I-a through I-d: See M - 4.1.1/6 above.
		Air Quality - 6.02	SCAQMD/ SCL-LEA	I-a through I-d: See M - 4.1.1/6 above.
		Visual - 10.08	County Forester	I-a through I-d: See M - 4.1.1/6 above.

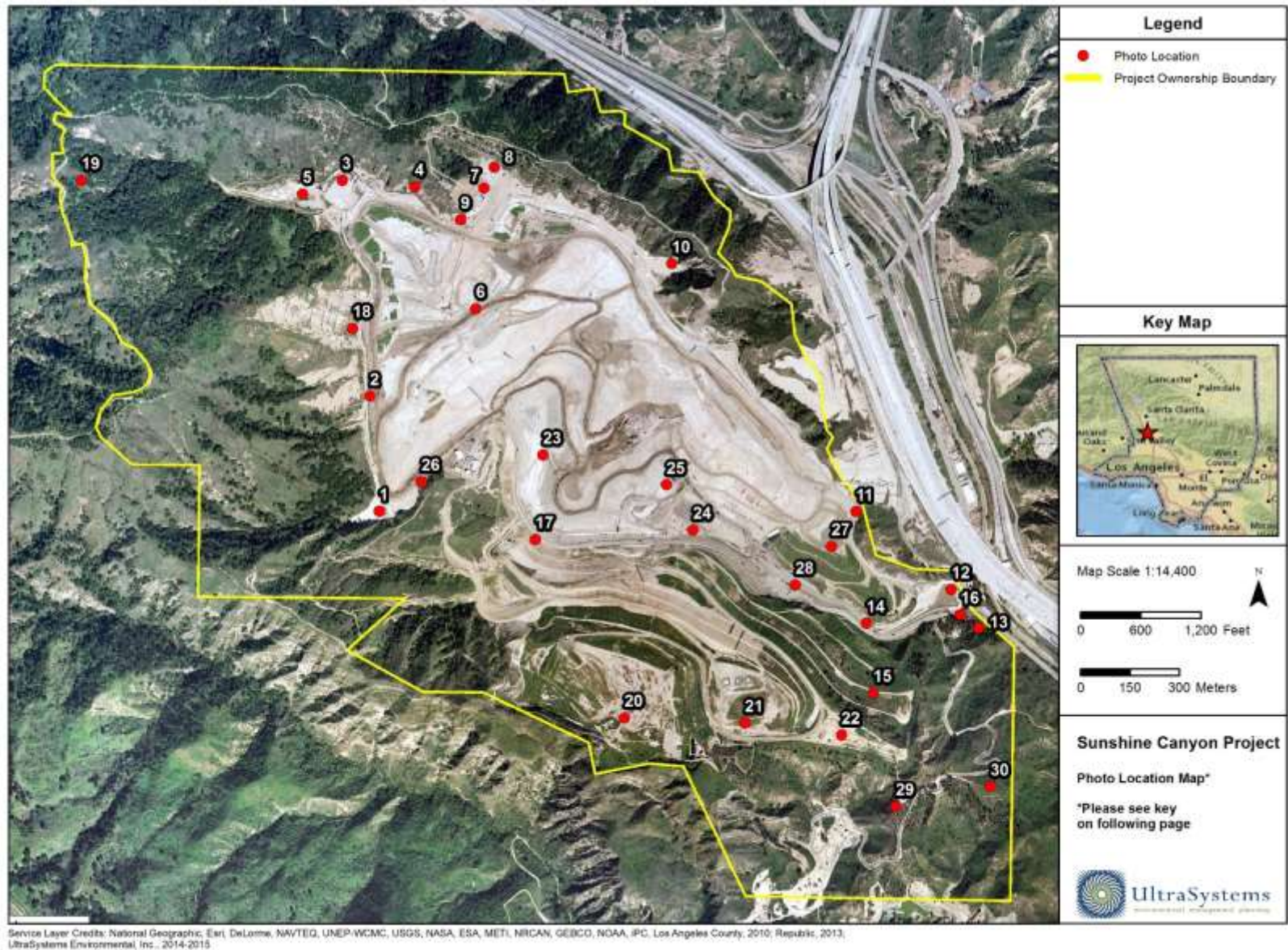
Discipline	City Condition Reference # / Mitigation #	County Condition Reference #/ Mitigation #	Responsible Agency	Further Review Needed-Comments
Biologist	M - 4.4.1 / 60		City Planning	<p>I-b: City Deck C sage mitigation was green and had sage and other plants being established besides the predominant saltbush.</p> <p>I-c: The City Deck C was lush and doing well. Native species were growing under and alongside the saltbush. California sage that went dormant had come back in many areas. Black sage did not. Some non-natives like tobacco bush need to be removed. The Deck B sage area was doing well Mustard control and removal of other non-natives would substantially help this area. Total removal and replanting may not be necessary.</p> <p>I-d: Deck C sage mitigation was doing well. Plants were slowing down in green growth due to warm temperatures and no rain. The oak trees in the PM-10 berm area are doing well. Some areas may be ready for planting understory trees.</p>
		Biota - 4.27	SCL-LEA/CDFW	<p>I-a: The County sage mitigation area had greened-up from recent rain events.</p> <p>I-b: The County sage mitigation area had greened up since the last monitoring. The recent rains have helped the existing vegetation. The friable soils showed deeper rutting from rain runoff. No mitigation work is being done in this area.</p> <p>I-c: The County sage area friable soils appear to be a prime cause of the lack of vegetation being able to be reestablished. Areas that had established vegetation were green from the rains. A trial project to stabilize the soil with wattles, netting, or some other system may be helpful in finding a solution to erosion of the friable soils.</p>
		Biota - 4.29	County LEA/CDFW	I-d: See Q-B.2.c above.
		Biota - 4.30	County LEA/CDFW	I-d: See Q-B.2.c above.
		Biota - 4.33	County LEA/CDFW	I-d: See Q-B.2.c above.
		Biota - 4.34	County LEA/CDFW	I-d: See Q-B.2.c above.
	M - 4.4.1 / 63		City Planning/CDFW	I-b, I-c, and I-d: A sandy soil habitat has been provided for the lizard in the Deck C mitigation area. Native ants (a food source) were observed. No lizards have been observed.
	M - 4.4.1 / 67		City Planning/CDFW	I-c: Flare 8 hillside grading limits and the native vegetation that would be impacted due to the proposed grading was observed. Republic's biologist has performed a biological assessment and will issue a report on the existing vegetation and wildlife. This report should be provided to the County and other appropriate agencies.
	M - 4.4.3 / 82		City Planning/CDFW	I-c: The County biologist noted that numerous coast live oak trees on the native hillside were dying and stated that Republic should talk to the County forester and fire staff about this condition.

Discipline	City Condition Reference # / Mitigation #	County Condition Reference # / Mitigation #	Responsible Agency	Further Review Needed-Comments
Biologist		Biota - 4.13	County Forester	I-c: See M - 4.4.3 / 82 above.
Air Quality & Noise Specialist	M - 4.2.11 / 20		City Planning/SCAQMD City LEA LADBS	I-a and I-d: See M - 4.2.12 / 28 above.
		Air Quality - 6.01	SCAQMD/ County LEA	I-a and I-d: See M - 4.2.12 / 28 above.
Hydrology, Hazardous Waste / Risk of Upset	M - 4.9.1 / 94		City Planning/LARWQCB Cal Recycle City LEA	I-b: Grading equipment was parked on the County top deck and oil drip pans were not being used.
	M - 4.9.4 / 121		City Planning/Cal Recycle Cal OSHA LAFD City LEA	I-b: A secondary access road from Deck C to the oil field and Sesnon has deep ruts and may not be able to be used by a normal road clearance passenger vehicle. The access road needed to be graded and have rock placed. Many facilities on site are being relocated. A fire plot plan showing the new locations and roadways should be prepared and provided to the City Fire Department and City and County Planning. Emergency egress should be posted for site employees and customers.
		Fire Service - 12.03	County Fire and Forester County DPW EPD	I-b: See M - 4.9.4 / 121 above.
	M-4.9.4/125		City Planning/ CalRecycle Cal OSHA SCL-LEA	I-a: The south perimeter gate in the oil field was closed but not locked. I-d: The south perimeter oil field gate was observed to be locked.
Archaeologist	M-4.19.1/183		City Planning	I-d: Archaeological surveys were performed on the natural, undisturbed areas where grading for the access road realignment will occur. No items of concern were found. Archaeological reports are on file and are available in Republic's offices.
		Ecological Significance 62	County Planning	I-d: See M-4.19.1/183 above.
Paleontologist	M-4.19.2/191		City Planning	I-b through I-d: A paleontological consultant was on site monitoring the excavation west and south of the offices in City and County jurisdictions. No recoverable resources were encountered, only minor non-recoverable marine fragments. Paleontological reports are on file and are available in Republic's offices. I-d: The grading for the realignment of the access road resumed in March 2015. A paleontological consultant was monitoring this work area.
		Ecological Significance 62	County Planning	I-b through I-d: See M-4.19.2/187 above.

Appendix II

Relevant Site Photos

[This page is blank for printing]



[This page is blank for printing]

Photo Location Map Key

Map Location	Title	Photo Number
1.	Basin A	1-15
2.	Westside Drainage Channel	24-37
3.	Basin D	-
4.	Basin D North Drainage	38-46
5.	Materials Storage Area	-
6.	County Top Deck	78-102
7.	Flares 8-10	60
8.	Gas-to Energy Facility	-
9.	Flares 8-10 Adjacent Hillsides	61-77
10.	Basin B	125-139
11.	Eastside Drainage Channel	120-124
12.	Terminal Basin	140-149
13.	Wastewater Sewer Connection Facility	-
14.	Existing Access Road	-
15.	Access Road Realignment Area	155-196
16.	Leachate Treatment Facility	-
17.	New Truck Scale Facilities	292-294
18.	County Sage Mitigation Area	47-59
19.	Big Cone Fir Mitigation	-
20.	City Sage Mitigation – Deck A	-
21.	City Sage Mitigation – Deck B	280-281
22.	City Sage Mitigation – Deck C	257-279
23.	Cell CC3A	-
24.	Cell CC3A Buttress Area	-
25.	Site Working Area	316-368
26.	Site Grading West of Office	295-314
27.	Old City North	-
28.	Condensate Treatment Facility	150-154
29.	PM-10 Mitigation Planting	282-291
30.	Oak Tree Mitigation along Oil Field Road	242-253

[This page is blank for printing]



Photo 1: Basin A: January 7, 2015



Photo 2: Basin A: January 7, 2015



Photo 3: Basin A: January 7, 2015



Photo 4: Basin A: February 13, 2015



Photo 5: Basin A: February 13, 2015



Photo 6: Basin A: February 13, 2015



Photo 7: Basin A: February 13, 2015



Photo 8: Basin A: February 13, 2015



Photo 9: Basin A: February 13, 2015



Photo 10: Basin A: February 13, 2015



Photo 11: Basin A: February 13, 2015



Photo 12: Basin A: February 13, 2015



Photo 13: Basin A: February 26, 2015



Photo 14: Basin A: February 26, 2015



Photo 15: Basin A: February 26, 2015



Photo 16: Basin A Inlet: January 7, 2015



Photo 17: Basin A Inlet: February 13, 2015



Photo 18: Basin A Outlet: February 13, 2015



Photo 19: Basin A Outlet: February 26, 2015



Photo 20: Hillside Flow-Westside Drainage Channel: January 7, 2015



Photo 21: Hillside Flow- Westside Drainage Channel: January 7, 2015



Photo 22: Hillside Flow- Westside Drainage Channel: January 7, 2015



Photo 23: Hillside Flow- Westside Drainage Channel: January 7, 2015



Photo 24: Westside Drainage Channel: January 7, 2015



Photo 25: Westside Drainage Channel: January 7, 2015



Photo 26: Westside Drainage Channel: January 7, 2015



Photo 27: Westside Drainage Channel: January 7, 2015



Photo 28: Westside Drainage Channel: February 13, 2015



Photo 29: Westside Drainage Channel: February 13, 2015



Photo 30: Westside Drainage Channel: February 13, 2015



Photo 31: Westside Drainage Channel: February 13, 2015



Photo 32: Westside Drainage Channel: February 13, 2015



Photo 33: Westside Drainage Channel: February 26, 2015



Photo 34: Westside Drainage Channel: February 26, 2015



Photo 35: Westside Drainage Channel: February 26, 2015



Photo 36: Westside Drainage Channel: February 26, 2015



Photo 37: Westside Drainage Channel: February 26, 2015



Photo 38: Basin D Outlet Channel: January 7, 2015



Photo 39: Basin D Outlet Channel: January 7, 2015



Photo 40: Basin D Outlet Channel: January 7, 2015



Photo 41: Basin D Outlet Channel: February 26, 2015



Photo 42: Basin D Outlet Channel: February 26, 2015



Photo 43: Basin D Outlet Channel: February 26, 2015



Photo 44: Basin D Outlet Channel: February 26, 2015



Photo 45: Basin D Outlet Channel: February 26, 2015



Photo 46: Basin D Outlet Channel: February 26, 2015



Photo 47: County Sage Mitigation Area: January 7, 2015



Photo 48: County Sage Mitigation Area: January 7, 2015



Photo 49: County Sage Mitigation Area: February 13, 2015



Photo 50: County Sage Mitigation Area: February 13, 2015



Photo 51: County Sage Mitigation Area: February 13, 2015



Photo 52: County Sage Mitigation Area: February 13, 2015



Photo 53: County Sage Mitigation Area: February 13, 2015



Photo 54: County Sage Mitigation Area: February 13, 2015



Photo 55: County Sage Mitigation Area: February 13, 2015



Photo 56: County Sage Mitigation Area: February 13, 2015



Photo 57: County Sage Mitigation Area: March 24, 2015



Photo 58: County Sage Mitigation Area: March 24, 2015



Photo 59 County Sage Mitigation Area: March 24, 2015



Photo 60: Flares 8, 9 and 10 Hillside: January 7, 2015



Photo 61: Flare 8 Hillside Vegetation: February 13, 2015



Photo 62: Flare 8 Hillside Vegetation: February 13, 2015



Photo 63: Flare 8 Hillside Vegetation: February 13, 2015



Photo 64: Flare 8 Hillside Vegetation: February 13, 2015



Photo 65: Staking for Flare 8 Hillside Removal: February 13, 2015



Photo 67: Staking for Flare 8 Hillside Removal: February 13, 2015



Photo 66: Staking for Flare 8 Hillside Removal: February 13, 2015



Photo 68: Staking for Flare 8 Hillside Removal: February 13, 2015



Photo 69: Staking for Flare 8 Hillside Removal: February 13, 2015



Photo 70: Staking for Flare 8 Hillside Removal: February 13, 2015



Photo 71: Staking for Flare 8 Hillside Removal: February 13, 2015



Photo 72: Staking for Flare 8 Hillside Removal: February 26, 2015



Photo 73: Flare 8 Hillside Vegetation: February 26, 2015



Photo 74: Flare 8 Hillside Vegetation: February 26, 2015



Photo 75: Flare 8 Hillside Vegetation: February 26, 2015



Photo 76: Flare 8 Hillside Vegetation: February 26, 2015



Photo 77: Flare 8 Hillside Vegetation: February 26, 2015



Photo 78: County Top Deck: January 7, 2015



Photo 79: County Top Deck: January 7, 2015



Photo 80: County Top Deck: January 7, 2015



Photo 81: County Top Deck: January 7, 2015



Photo 82: County Top Deck: February 13, 2015



Photo 83: County Top Deck: February 13, 2015



Photo 84: County Top Deck: February 13, 2015



Photo 85: County Top Deck: February 13, 2015



Photo 86: County Top Deck: February 13, 2015



Photo 87: County Top Deck: February 13, 2015



Photo 88: County Top Deck: February 13, 2015



Photo 89: County Top Deck: February 13, 2015



Photo 90: County Top Deck: February 13, 2015



Photo 91: County Top Deck: February 13, 2015



Photo 92: County Top Deck: February 13, 2015



Photo 93: County Top Deck: February 26, 2015



Photo 94: County Top Deck: February 26, 2015



Photo 95: County Top Deck: February 26, 2015



Photo 96: County Top Deck: February 26, 2015



Photo 97: County Top Deck: February 26, 2015



Photo 98: County Top Deck: March 24, 2015



Photo 99: County Top Deck: March 24, 2015



Photo 100: County Top Deck: March 24, 2015



Photo 101: County Top Deck: March 24, 2015



Photo 102: County Top Deck: March 24, 2015



Photo 103: Parked Equipment with No Oil Drip Pans: February 13, 2015



Photo 104: Parked Equipment with No Oil Drip Pans: February 13, 2015



Photo 105: Parked Equipment with No Oil Drip Pans: February 13, 2015



Photo 106: Parked Equipment with No Oil Drip Pans: February 26, 2015



Photo 107: Parked Equipment with No Oil Drip Pans: February 26, 2015



Photo 108: Parked Equipment with No Oil Drip Pans: February 26, 2015



Photo 109: City Top Deck: February 13, 2015



Photo 110: City Top Deck: February 13, 2015



Photo 111: City Top Deck: February 13, 2015



Photo 112: City Top Deck: February 13, 2015



Photo 113: City Top Deck: February 13, 2015



Photo 114: City Top Deck: February 13, 2015



Photo 115: City Top Deck: March 24, 2015



Photo 116: City Top Deck: March 24, 2015



Photo 117: City Top Deck: March 24, 2015



Photo 118: City Top Deck: March 24, 2015



Photo 119: City Top Deck: March 24, 2015



Photo 120: Eastside Drainage Channel to Basin B: February 13, 2015



Photo 121: Eastside Drainage Channel to Basin B: February 13, 2015



Photo 122: Eastside Drainage Channel to Basin B: February 13, 2015



Photo 123: Drainage Channel to Basin B: February 26, 2015



Photo 124: Drainage Channel to Basin B: February 26, 2015



Photo 125: Basin B: January 7, 2015



Photo 126: Basin B: January 7, 2015



Photo 127: Basin B Native Hillside: January 7, 2015



Photo 128: Basin B Native Hillside: January 7, 2015



Photo 129: Basin B: February 13, 2015



Photo 130: Basin B: February 13, 2015



Photo 131: Basin B Native Hillside: February 13, 2015



Photo 132: Basin B Native Hillside: February 13, 2015



Photo 133: Basin B Native Hillside: February 13, 2015



Photo 134: Basin B: February 26, 2015



Photo 135: Basin B: February 26, 2015



Photo 136: Basin B: February 26, 2015



Photo 137: Basin B Adjacent Hillsides: February 26, 2015



Photo 138: Basin B Adjacent Hillsides: February 26, 2015



Photo 139: Basin B Adjacent Hillsides: February 26, 2015



Photo 140: Terminal Basin: January 7, 2015



Photo 141: Terminal Basin Outlet Risers: January 7, 2015



Photo 142: Terminal Basin: March 24, 2015



Photo 143: Terminal Basin: March 24, 2015



Photo 144: Terminal Basin: March 24, 2015



Photo 145: Terminal Basin: March 24, 2015



Photo 146: Terminal Basin: March 24, 2015



Photo 147: Terminal Basin Exterior Sidewall: March 24, 2015



Photo 148: Terminal Basin Exterior Sidewall: March 24, 2015



Photo 149: Terminal Basin Exterior Sidewall: March 24, 2015



Photo 150: Old City North Treated Leachate and Condensate Holding Tanks: January 7, 2015



Photo 151: Old City North Treated Leachate and Condensate Holding Tanks: February 13, 2015



Photo 152: Decommissioned Condensate Treatment Plant: February 26, 2015.



Photo 153: Decommissioned Condensate Treatment Plant: February 26, 2015



Photo 154: Decommissioned Condensate Treatment Plant: February 26, 2015



Photo 155: Access Road Realignment Area: January 7, 2015



Photo 156: Access Road Realignment Area: January 7, 2015



Photo 157: Access Road Realignment Area: January 7, 2015



Photo 158: Access Road Realignment Area: January 7, 2015



Photo 159: Access Road Realignment Area: January 7, 2015



Photo 160: Access Road Realignment Area: January 7, 2015



Photo 161: Access Road Realignment Area: January 7, 2015



Photo 162: Access Road Realignment Area: January 7, 2015



Photo 163: Access Road Realignment Area: January 7, 2015



Photo 164: Access Road Realignment Area: February 26, 2015



Photo 165: Access Road Realignment Area: February 26, 2015



Photo 166: Access Road Realignment Area: February 26, 2015



Photo 167: Access Road Realignment Area: February 26, 2015



Photo 168: Access Road Realignment Area: February 26, 2015



Photo 169: Access Road Realignment Area: February 26, 2015



Photo 170: Site Grading West of Office: February 26, 2015



Photo 171: Access Road Realignment Area: March 24, 2015



Photo 172: Access Road Realignment Area: March 24, 2015



Photo 173: Access Road Realignment Area: March 24, 2015



Photo 174: Access Road Realignment Area: March 24, 2015



Photo 175: Access Road Realignment Area: March 24, 2015



Photo 176: Access Road Realignment Area: March 24, 2015



Photo 177: Access Road Realignment Area: March 24, 2015



Photo 178: Access Road Realignment Area: March 24, 2015



Photo 179: Access Road Realignment Area: March 24, 2015



Photo 180: Access Road Realignment Area: March 24, 2015



Photo 181: Access Road Realignment Area: March 24, 2015



Photo 182: Access Road Realignment Area: March 24, 2015



Photo 183: Access Road Realignment Area: March 24, 2015



Photo 184: Access Road Realignment Area: March 24, 2015



Photo 185: Access Road Realignment Area: March 24, 2015



Photo 186: Access Road Realignment Area: March 24, 2015



Photo 187: Access Road Realignment Area: March 24, 2015



Photo 188: Access Road Realignment Area: March 24, 2015



Photo 189: Access Road Realignment Area: March 24, 2015



Photo 190: Access Road Realignment Area: March 24, 2015



Photo 191: Access Road Realignment Area: March 24, 2015



Photo 192: Access Road Realignment Area: March 24, 2015



Photo 193: Access Road Realignment Area: March 24, 2015



Photo 194: Access Road Realignment Area: March 24, 2015



Photo 195: Access Road Realignment Area: March 24, 2015



Photo 196: Access Road Realignment Area: March 24, 2015



Photo 197: City South Slope Vegetation: March 24, 2015



Photo 198: City South Slope Vegetation: March 24, 2015



Photo 199: City South Slope Vegetation: March 24, 2015



Photo 200: City South Slope Vegetation: March 24, 2015



Photo 201: City South Slope Vegetation: March 24, 2015



Photo 202: Slopes Near Temporary Basin: March 24, 2015



Photo 203: Slopes Near Temporary Basin: March 24, 2015



Photo 204: Slopes Near Temporary Basin: March 24, 2015



Photo 205: Alluvial Soils Removal Near Temporary Basins: March 24, 2015



Photo 206: Alluvial Soils Removal Near Temporary Basins: March 24, 2015



Photo 207: Alluvial Soils Removal Near Temporary Basins: March 24, 2015



Photo 208: Alluvial Soils Removal Near Temporary Basins: March 24, 2015



Photo 209: Temporary Basins Road Realignment: March 24, 2015



Photo 210: Temporary Basins Below Condensate Treatment Pad: March 24, 2015



Photo 211: Temporary Basins: March 24, 2015



Photo 212: Temporary Basins: March 24, 2015



Photo 213: Temporary Basins: March 24, 2015



Photo 214: Temporary Basins: March 24, 2015



Photo 215: Condensate Sump CS-22: March 24, 2015



Photo 216: Condensate Sump CS-22: March 24, 2015



Photo 217: Condensate Sump CS-22: March 24, 2015



Photo 218: Monitoring Well P-245: January 7, 2015



Photo 219: Monitoring Well P-245: January 7, 2015



Photo 220: Monitoring Well P-211D: January 7, 2015



Photo 221: Westside Drainage January 7, 2015



Photo 222: Monitoring Well P-207: January 7, 2015



Photo 223: Monitoring Well: January 7, 2015



Photo 224: Monitoring Well P-204D: January 7, 2015



Photo 225: Monitoring Well: January 7, 2015



Photo 226: Monitoring Well P-205R: January 7, 2015



Photo 227: Monitoring Well P-208: January 7, 2015



Photo 228: Monitoring Well CM-11R: January 7, 2015



Photo 229: Monitoring Well CM-9R: January 7, 2015



Photo 230: Access to Monitoring Well CM-9R: January 7, 2015



**Photo 231: Monitoring Wells PZ-2 and P-216 Near Eastside Drainage:
January 7, 2015**



Photo 232: Monitoring Well MW-14: January 7, 2015



Photo 233: Monitoring Well DW-5: January 7, 2015



Photo 234: Monitoring Well DW-5: January 7, 2015



Photo 235: Monitoring Well DW-1: January 7, 2015



Photo 236: Monitoring Well MW-8: January 7, 2015



Photo 237: Monitoring Well MW-6: January 7, 2015



Photo 238: Monitoring Well MW-1: January 7, 2015



Photo 239: Monitoring Well MW-1: January 7, 2015



Photo 240: Monitoring Well MW-13R: January 7, 2015



Photo 241: Sewer Deep Well Pump: March 24, 2015



Photo 242: City Oil Road Oaks: March 24, 2015



Photo 243: City Oil Road Oaks: March 24, 2015



Photo 244: City Oil Road Oaks: March 24, 2015



Photo 245: City Oil Road Oaks: March 24, 2015



Photo 246: City Oil Road Oaks: March 24, 2015



Photo 247: City Oil Road Oaks: March 24, 2015



Photo 248: City Oil Road Oaks: March 24, 2015



Photo 249: City Oil Road Oaks: March 24, 2015



Photo 250: City Oil Road Oaks: March 24, 2015



Photo 251: City Oil Road Oaks: March 24, 2015



Photo 252: City Oil Road Oaks: March 24, 2015



Photo 253: City Oil Road Oaks: March 24, 2015



Photo 254: Oil Field South Gate: March 24, 2015



Photo 255: City South Slope Drainage: March 24, 2015



Photo 256: City South Slope Drainage: March 24, 2015



Photo 257: City Sage Mitigation Deck C: February 13, 2015



Photo 258: City Sage Mitigation Deck C: February 13, 2015



Photo 259: City Sage Mitigation Deck C: February 13, 2015



Photo 260: City Sage Mitigation Deck C: February 13, 2015



Photo 261: City Sage Mitigation Deck C: February 13, 2015



Photo 262: City Sage Mitigation Deck C: February 13, 2015



Photo 263: City Sage Mitigation Deck C: February 13, 2015



Photo 264: City Sage Mitigation Deck C: February 26, 2015



Photo 265: City Sage Mitigation Deck C: February 26, 2015



Photo 266: City Sage Mitigation Deck C: February 26, 2015



Photo 267: City Sage Mitigation Deck C: February 26, 2015



Photo 268: City Sage Mitigation Deck C: February 26, 2015



Photo 269: City Sage Mitigation Deck C: February 26, 2015



Photo 270: City Sage Mitigation Deck C: February 26, 2015



Photo 271: City Sage Mitigation Deck C: February 26, 2015



Photo 272: City Sage Mitigation Deck C: February 26, 2015



Photo 273: City Sage Mitigation Deck C: February 26, 2015



Photo 274: City Sage Mitigation Deck C: February 26, 2015



Photo 275: City Sage Mitigation Deck C: February 26, 2015



Photo 276: City Sage Mitigation Deck C: February 26, 2015



Photo 277: City Sage Mitigation Deck C: February 26, 2015



Photo 278: City Sage Mitigation Deck C: March 24, 2015



Photo 279: City Sage Mitigation Deck C: March 24, 2015



Photo 280: City Sage Mitigation Deck B: February 26, 2015



Photo 281: City Sage Mitigation Deck B: February 26, 2015



Photo 282: City PM-10 Berm Oak Trees: February 13, 2015



Photo 283: City PM-10 Berm Oak Trees: February 13, 2015



Photo 284: City PM-10 Berm Oak Trees: February 13, 2015



Photo 285: City PM-10 Berm Oak Trees: February 13, 2015



Photo 286: City PM-10 Berm Oak Trees: February 13, 2015



Photo 287: City PM-10 Berm Oak Trees: February 13, 2015



Photo 288: City Berm PM-10 Oaks: March 24, 2015



Photo 289: City Berm PM-10 Oaks: March 24, 2015



Photo 290: City Berm PM-10 Oaks: March 24, 2015



Photo 291: City Berm PM-10 Oaks: March 24, 2015



Photo 292: New Truck Scales: January 7, 2015



Photo 293: New Truck Scales: January 7, 2015



Photo 294: New Truck Scales: January 7, 2015



Photo 295: Site Grading West of Office: February 13, 2015



Photo 296: Site Grading West of Office: February 13, 2015



Photo 297: Site Grading West of Office: February 13, 2015



Photo 298: Site Grading West of Office: February 13, 2015



Photo 299: Site Grading West of Office: February 13, 2015



Photo 300: Site Grading West of Office: February 13, 2015



Photo 301: Site Grading West of Office: February 13, 2015



Photo 302: Site Grading West of Office: February 13, 2015



Photo 303: Site Grading West of Office: February 13, 2015



Photo 304: Site Grading West of Office: February 13, 2015



Photo 305: Site Grading West of Office: February 13, 2015



Photo 306: Site Grading West of Office: February 13, 2015



Photo 307: Site Grading West of Office: February 26, 2015



Photo 308: Site Grading West of Office: February 26, 2015



Photo 309: Site Grading West of Office: February 26, 2015



Photo 310: Site Grading West of Office: February 26, 2015



Photo 311: Site Grading West of Office: February 26, 2015



Photo 312: Site Grading West of Office: February 26, 2015



Photo 313: Site Grading West of Office: February 26, 2015



Photo 314: Site Grading West of Office: February 26, 2015



Photo 315: Site Working Area: February 13, 2015



Photo 316: Site Working Area: February 13, 2015



Photo 317: Site Working Area: February 13, 2015



Photo 318: Site Working Area: February 13, 2015



Photo 319: Site Working Area: February 13, 2015



Photo 320: Site Working Area: February 13, 2015



Photo 321: Site Working Area: February 13, 2015



Photo 322: Site Working Area: February 26, 2015



Photo 323: Site Working Area: February 26, 2015



Photo 324: Site Working Area: February 26, 2015



Photo 325: Site Working Area: February 26, 2015



Photo 326: Site Working Area: February 26, 2015



Photo 327: Site Working Area: February 26, 2015



Photo 328: Site Working Area: February 26, 2015



Photo 329: Site Working Area: February 26, 2015



Photo 330: Site Working Area: March 24, 2015



Photo 331: Site Working Area: March 24, 2015



Photo 332: Site Working Area: March 24, 2015



Photo 333: Site Working Area: March 24, 2015



Photo 334: Site Working Area: March 24, 2015



Photo 335: Site Working Area: March 24, 2015



Photo 336: Site Working Area: March 24, 2015



Photo 337: Site Working Area: March 24, 2015



Photo 338: Site Working Area: March 24, 2015



Photo 339: Site Working Area: March 24, 2015



Photo 340: Site Working Area: March 24, 2015



Photo 341: Site: February 13, 2015



Photo 342: Site: February 13, 2015



Photo 343: Site: February 13, 2015



Photo 344: Site: February 13, 2015



Photo 345: Site: February 13, 2015



Photo 346: Site: February 13, 2015



Photo 347: Site: February 13, 2015



Photo 348: Site: February 13, 2015



Photo 349: Site: February 13, 2015



Photo 350: Site: February 26, 2015



Photo 351: Site: February 26, 2015



Photo 352: Site: February 26, 2015



Photo 353: Site: February 26, 2015



Photo 354: Site: February 26, 2015



Photo 355: Site: March 24, 2015



Photo 356: Site: March 24, 2015



Photo 357: Site: March 24, 2015



Photo 358: Site: March 24, 2015



Photo 359: Site: March 24, 2015



Photo 360: Site: March 24, 2015



Photo 361: Site: March 24, 2015



Photo 362: Site: March 24, 2015



Photo 363: Site: March 24, 2015



Photo 364: Site: March 24, 2015



Photo 365: Site: March 24, 2015

Appendix III

Quarterly Site Visits: Site Visit Attendees by Date of Site Visit/ Mitigation Monitoring Site Reports

UltraSystems Staff Fields of Expertise:

James Aidukas	Project Manager, Permitting and Operations/ Engineer
Mike Lindsay	Air Quality, Noise, Vehicle Emissions, Environmental Specialist/ Engineer

SLR Staff Fields of Expertise:

Tarik Hadj-Hamou	Geology
------------------	---------

[This page is blank for printing]

January Site Visits

January 7, 2015:

James Aidukas (UltraSystems)

Mike Lindsay (UltraSystems)



**SUNSHINE CANYON LANDFILL
MITIGATION MONITORING SITE REPORT**

Monitor: James Aidukas	Page: 1 of 2
Discipline: Project Manager	Date: 1/7/15
Site Conditions: ~ 70° - 80°, mild wind gusts 5-20 mph	
SITE LOG	
<p>Republic Site Manager - Rob Sherman</p> <p>Met with Dave Nguyen (LACDPW) and Mike Lindsay, (UltraSystems). Signed in at the Republic site office and had a brief conversation with Patti Costa and Larry Bressman (Republic staff), getting a quick update on current site activities. We then proceeded to monitor the site and observed the following:</p> <ul style="list-style-type: none"> • Basin A had standing water near the outlet risers. There was approximately two inches of sediment in one-third of the basin. The adjacent native hillsides had minor wind-blown litter. • The inlet to Basin A was blocked with tumbleweed. • The excavation west of the offices was ongoing with a paleontological monitor on-site. No recoverable resources were encountered, only minor non-recoverable marine fragments. • A downhill drainage v-ditch near the county sage area and monitoring well P-245 was flowing water under the concrete sidewall of the westside drainage channel. This could be the possible cause of the uplifting of the bottom and the cracking and spalling of the concrete sidewalls of the westside drainage channel. • Water monitoring wells, gas monitoring wells and gas probes were located and cross-referenced to the RWQCB public notice monitoring well MRP proposed revision. All RWQCB referenced wells were found except for CM-10R, CM-5 and PZ-1. • The outlet of Basin D to the westside channel had sediment and a large piece of HDPE liner material in the channel. • The Basin D northside outlet channel was blocked with tumbleweed. • The county sage mitigation area had greened-up from recent rain events. • The material storage yard had recyclable material and storage bins removed. The remaining material was reorganized. • Basin B had no standing water with minimal sediment. Windblown litter was seen on the east native hillside. • The gas-to-energy facility was fully operating with no operational problems. • No grading was being done on the Flare 8 hill. Biological assessments of the existing vegetation and wildlife has not yet been performed. • The terminal basin was dry and it appears that sediment was removed since the last rain. • Standing water was being pumped from the lower temporary basin south of the terminal basin. • The treated leachate and sewer area had localized odors around the sewer deep well pump cover plate. The site contractor was pumping liquid into the sewer deep well. 	

Page 2 of 2, 1/7/15

Flare Operating Conditions:

- Flare 3 - not operating
- Flare 9 - not operating
- Flare 10 - 1665°F, 1485 SCFM, -62" H₂O vacuum, 40" H₂O outlet; three blowers running, 46% methane

After the monitoring we met with Patti Costa and Achaya Kelapanda and discussed our observations and were provided with the status of site activities. See January meeting log for the record of the discussion.

FURTHER REVIEW NEEDED

1. Monitor status of westside drainage concrete conditions.
2. Track biological assessment of Flare 8 hill.

COMMENTS

Signed: 




UltraSystems
environmental • management • engineering

SUNSHINE CANYON LANDFILL
MITIGATION MONITORING
SITE REPORT

Monitor: Mike Lindsay	Page 1 of 2
Discipline: Environmental Engineer	Date: 01-07-15 Wed.
Site Conditions: Mostly sunny, 66-79°F, 5-20 mph, 24%RH	
SITE LOG	
1. Met with Dave Nguyen (LACDPW), Jim Aidukas (UltraSystems), and checked into office and with Patti Costa, Larry Bressman (Republic).	
2. Sediment Basin A is in good order, with about one inch of standing water and one inch of sediment surrounding the vertical drains. No wind blown trash buildup is present along basin north slopes.	
3. Westside Drainage is in overall good condition, with uplifting and cracked concrete at known locations.	
4. Gas monitoring well # P245 is in good order.	
5. BAS Pipe Storage Yard is in good order, with much of the material stockpiles and storage containers now removed.	
6. Northside Drainage is clear, except brush blocking culvert openings.	
7. Sediment Basin B is clear of soil build-up.	
8. Met with Achaya Kelapanda (Republic) to confirm locations of water monitoring wells per County's request.	
9. Flake 10 is operating at 1479 scfm, 1665°F; gas sample measured at 41% vol. CH ₄ , 5.0% vol. O ₂ , 77 ppm H ₂ S, 46 ppm CO, operating blowers 1, 2, & 3.	
10. Flake 9 was offline.	
11. Terminal Sediment Basin is clear of soil build-up, with no standing water.	
12. Lower leachate treatment plant is in good order, with leachate odors around facility.	
FURTHER REVIEW NEEDED	
1. Repair Westside Drainage concrete damage.	
2. Remove wind blown brush from Northside drainage culverts.	
Project Number: 5800	Signed: Mike Lindsay



**SUNSHINE CANYON LANDFILL
MITIGATION MONITORING
SITE REPORT**

Monitor: Mike Lindsay	Page 2 of 2
Discipline: Environmental Engineer	Date: 01-07-15 Wed.
Site Conditions:	
SITE LOG	
<p>13. City Deck C sage mitigation area is continuing to grow saltbush throughout. Observed green grass growing on adjacent slopes.</p> <p>14. Met with Patti Costa, and discussed the following topics. Achaya joined us after awhile.</p> <p>a. We could not find water monitoring well #CM5 (part of the tentative plan to abandon certain water monitoring wells).</p> <ul style="list-style-type: none"> • Patti suggested we talk with Achaya. <p>b. Drainage culverts need to have brush removed.</p> <ul style="list-style-type: none"> • Patti will have the drainage system cleared. <p>c. Condensate tanks have strong odors from 30 yards away.</p> <ul style="list-style-type: none"> • Patti will investigate the source of the odors. <p>d. Condensate pump truck by main entrance sewer lift station was odorous.</p> <ul style="list-style-type: none"> • Patti will correct the problem with contractor. <p>e. Some water monitoring wells are not marked.</p> <ul style="list-style-type: none"> • Achaya will make sure they are all marked properly. 	
FURTHER REVIEW NEEDED	
<div style="display: flex; justify-content: space-between;"> Project Number: 5800 Signed:  </div>	

February Site Visits

February 13, 2015:

James Aidukas (UltraSystems)

Mike Lindsay (UltraSystems)



**SUNSHINE CANYON LANDFILL
MITIGATION MONITORING SITE REPORT**

Monitor: James Aidukas	Page: 1 of 2
Discipline: Project Manager	Date: 2/13/15
Site Conditions: Clear and sunny, 60-70°F	
SITE LOG	
<p>Republic Site Manager - Rob Sherman</p> <p>Met with Mike Lindsay, (UltraSystems). Signed in and had a brief conversation with Rob Sherman. The monitoring team proceeded to the landfill site and observed the following:</p> <ul style="list-style-type: none"> • The area west and to the south of the office had a substantial amount of grading since the last monitoring. Republic's geotechnical consultant had installed horizontal subdrains to dewater areas of the hillside being graded. A paleontological consultant was onsite monitoring the excavation. • Basin A has excavation debris falling into the basin near the outlet risers. • The windblown litter on the native vegetation hillsides north of Basin A was removed and the hillsides were clean. • The inlet and outlet culverts at Basin A had tumbleweed and windblown litter blocking the pipes. • The County sage mitigation area had greened up since the last monitoring. The recent rains have helped the existing vegetation. The friable soils showed deeper rutting from rain runoff. No mitigation work is being done in this area. • The maintenance of the westside drainage channel concrete walls and floor has not been scheduled. There were three areas seen that had previously had water flowing behind the walls and under the floor. This could be the cause of the degradation of the channel in this area. • Grading equipment was parked on the County top deck. Oil drip pans were not being used. • The gas-to-energy plant was in full operation. • The Flare 8 hillside had staking in place delineating the excavation area limits. The native vegetation was observed. The results of the biological survey of this area has not been issued. • The eastside drainage channel to Basin B had brush, debris, and scrap plywood blocking potential water flow. • The localized odor near the leachate and condensate holding tanks on the old city north top deck was eliminated since the last monitoring. • The access road realignment slopes had the hydroseeding germinate and were covered with vegetation due to the rains. • City Deck C sage mitigation was green and had sage and other plants being established besides the predominant saltbush. 	

Page 2 of 2, 2/13/15:

Flare Operating Conditions:

- Flare 1 - 1695°F, 2481 SCFM, -65.5" H₂O vacuum
- Flare 3 - shut down
- Flare 8 - shut down
- Flare 9 - offline
- Flare 10 - 1649°F, 2450 SCFM, -61" H₂O vacuum, flow to gas plant 7258 SCFM, 46.6% methane

FURTHER REVIEW NEEDED

1. Cleaning of drainage channels and culvert.
2. Scheduling of maintenance on westside drainage channel.
3. Monitoring of earthmoving near office.
4. Review of biological report for Flare 8 hillside.

COMMENTS

Signed: 



**SUNSHINE CANYON LANDFILL
MITIGATION MONITORING
SITE REPORT**

Monitor: Mike Lindsay	Page 1 of 2
Discipline: Environmental Engineer	Date: 02-13-15 Fri.
Site Conditions: Sunny, 54-69 °F, winds 5-15 mph	
SITE LOG	
1. Met with Jim Aidukas (Ultra Systems) and checked into office with Rob Sherman (Republic).	
2. Grading and excavation work south of Admin. Facility is progressing, with parko monitor present.	
3. Sediment Basin A is in good order, with no wind-blown trash on north slopes; some standing water.	
4. Westside drainage has debris and vegetation blocking culvert drains.	
5. Observed four scrapers parked on County Top Deck.	
6. County sage mitigation slopes are not showing signs of green grass growth, even with the recent rains. Adjacent brush is greening somewhat.	
7. Westside Drainage is in overall good condition, with uplifting and cracked concrete at known locations.	
8. Observed Gas-to-Energy plant in full operation.	
9. Flare 9 is offline.	
10. Flare 10 is operating at 2418 SCFM, 1645 °F; gas sample measured at 39% Vol. CH ₄ (unit display showed 46.6 % Vol. CH ₄), 5.9 % Vol. O ₂ , 58 ppm H ₂ S, 416 ppm CO; operating blowers # 1, 2 and 7; SGP Flow Rate showed 732 l. In-line temperature gauges have been removed from delivery pipes.	
11. Northside drainage is overall clear, except brush and debris blocking culvert openings.	
12. Sediment Basin B is in good condition, with no soil build-up.	
FURTHER REVIEW NEEDED	
1. Remove debris at Westside Drainage culverts.	
2. Repair Westside Drainage concrete damage.	
3. Remove debris and brush at Northside Drainage culverts.	
Project Number: 5800	Signed: <i>Mike Lindsay</i>



**SUNSHINE CANYON LANDFILL
MITIGATION MONITORING
SITE REPORT**

Monitor: Mike Lindsay	Page 2 of 2
Discipline: Environmental Engineer	Date: 02-13-15
Site Conditions:	
SITE LOG	
13. Bypass Access Road slopes are in good condition with green grass covering much of the area.	
14. City Deck C sage mitigation area is growing additional saltbush and sage.	
15. Flare 1 is operating at 2533 SCFM, 1688 °F. gas sample measured at 29% Vol. CH ₄ , 4.4% Vol. CO ₂ , 91 ppm H ₂ S, 19 ppm CO; gas temperature at 140 °F.	
16. Observed crack in asphalt roadway by Admin. Facility, approx. 20 feet long.	
FURTHER REVIEW NEEDED	
4. Investigate roadway crack by Admin. Facility.	
Project Number: 5800	Signed: <i>Mike Lindsay</i>

February 26, 2015:

James Aidukas (UltraSystems)

Mike Lindsay (UltraSystems)



**SUNSHINE CANYON LANDFILL
MITIGATION MONITORING SITE REPORT**

Monitor: James Aidukas	Page: 1 of 2
Discipline: Project Manager	Date: 2/26/15
Site Conditions: Cloudy, ~70-75°F	
SITE LOG	
<p>Republic Site Manager - Rob Sherman</p> <p>Met with County Biologist Joe Decruyenaere (LACPD) and Tarik Hadj-Hamou (UltraSystems). Signed in and had a brief conversation with Patti Costa concerning monitoring the City Deck C sage mitigation and the County sage mitigation areas. Ms. Costa stated that she would not join us but would be able to meet us in the afternoon after completing the full site monitoring. We then proceeded to the landfill site and observed the following:</p> <ul style="list-style-type: none"> • The City Deck C was lush and doing well. Native species were growing under and alongside the saltbush. California sage that went dormant had come back in many areas. Black sage did not. Some non-natives like tobacco bush need to be removed. • The access road realignment slope cuts that were hydroseeded germinated and they were green, with grasses doing well in many areas. • The Deck B sage area was doing well. Mustard control and removal of other non-natives would substantially help this area. Total removal and replanting may not be necessary. • The County sage area friable soils appear to be a prime cause of the lack of vegetation being able to be reestablished. Areas that had established vegetation were green from the rains. A trial project to stabilize the soil with wattles, netting, or some other system may be helpful in finding a solution to the revegetation dilemma. • Flare 8 hillside grading limits and the native vegetation that would be impacted was observed. Republic's biologist's report on the existing vegetation and wildlife should be provided to the County biologist. • Joe Decruyenaere noted that numerous coast live oak trees on the native hillside were dying and stated that Republic should talk to the County forester and fire staff about this condition. <p>Mr. Decruyenaere then left the site and Tarik Hadj-Hamou and I met with Gabriel Esparza, Karlo Manalo (LACDPW) and Mike Lindsay (UltraSystems), and continued the monitoring.</p> <ul style="list-style-type: none"> • Basin A had standing water at the outlet risers. Soil from the adjacent hillside grading has fallen into the basin near the risers. • Basin A outlet was modified with a road crossing. However, portions of the temporary drain pipes under the crossing were blocked with soil and tumbleweed. • The Basin D outlet drainage channel had its outlet pipe blocked with tumbleweed. • The eastside drainage channel that was previously blocked with litter and debris on the prior site monitoring visit was clean. • Basin B had standing water at the outlet risers. The basin had minor sediment. The hillsides and basin were free of wind-blown litter. • There was a planned Edison outage. DTE made modifications to the control systems to be able to continue to run. The gas-to-energy facility was operating at 85% of full capacity. 	

Page 2 of 2, 2/26/15:

- The condensate treatment plant was shut down and being decommissioned. The baker tanks were already removed. Liquid is being sewerred without pretreatment.
- The access road realignment project is planned to resume grading in March.
- The sewer lift station had localized odors near the carbon filter drum.
- The site grading west of the office was still ongoing. A pad for relocating the office near the new scales was having final grading being done.

Flare Operating Conditions:

- Flare 1 - 1682°F, 2070 SCFM, -54" H₂O vacuum
- Flare 3 - shut down
- Flare 8 - shut down
- Flare 9 - offline
- Flare 10 - offline

FURTHER REVIEW NEEDED

1. Cleaning of drainage channels and culvert.
2. Scheduling of maintenance on westside drainage channel.
3. Monitoring of earthmoving near office.
4. Review of biological report for Flare 8 hillside.

COMMENTS

Signed: 



**SUNSHINE CANYON LANDFILL
MITIGATION MONITORING
SITE REPORT**

Monitor: Mike Lindsay	Page <u>1</u> of <u>3</u>
Discipline: Environmental Engineer	Date: <u>02-26-15</u> <u>Thur.</u>
Site Conditions: <u>Partly cloudy, 56-75°F, 5-15 mph</u>	
SITE LOG	
<ol style="list-style-type: none"> 1. Met with Karlo Manalo, Gabriel Esparza (LACDPW), Joe Decruyenaere (LACPD), Jim Aidukas, Tarik Hadj-Hamou (UltraSystems), and checked into office. 2. Office is experiencing a power outage. 3. Met Ronald Roque (LA DBS, Code Enforcement Bureau, LA City LEA). 4. County sage mitigation area is not showing signs of green growth, despite recent rains. Adjacent slopes and nearby areas are greening. 5. Northside drainage (Basin D Drainage) is in overall good condition, except for brush blocking culvert pipes, including large culvert system below Flare 10. 6. The Gas-to-Energy plant is coping with a planned Edison Electric outage, with all five turbines operating at a reduced 15 MW output. 7. Flares 9 and 10 are both offline. 8. Basin B is in good condition, with some standing water by drains against rock berms. 9. Westside Drainage is in overall good condition, with uplifting concrete floor at known locations, with cracked and spalling concrete side walls. 10. Sediment Basin A is clear of sediment, with some standing water by vertical drains against rock berms. 11. North slope of Sediment Basin A is clear of wind-blown trash. 12. Grading work is continuing by Admin facility, with a paleo monitor present. 	
FURTHER REVIEW NEEDED	
<ol style="list-style-type: none"> 1. Remove brush from Northside Drainage culverts. 2. Repair Westside Drainage concrete at known locations. 	
Project Number: 5800	Signed: <u>Mike Lindsay</u>



**SUNSHINE CANYON LANDFILL
MITIGATION MONITORING
SITE REPORT**

Monitor: Mike Lindsay	Page 2 of 3
Discipline: Environmental Engineer	Date: 02-26-15 Thur.
Site Conditions:	
SITE LOG	
<p>13. Observed working face with tipper.</p> <p>14. Observed grading and soil compaction along main haul road drainage ditch, ahead of predicted rains.</p> <p>15. City Deck C sage mitigation area is in good condition.</p> <p>16. Observed PM-10 berm to be in good condition.</p> <p>17. Viewed overall landfill operations from observation deck.</p> <p>18. Condensate treatment facility by old scale house has been decommissioned.</p> <p>19. Flare 1 is operating at 2098 SCFM, 1666 °F; gas sample measured at 2.5 % Vol. CH₄, 4.5 % Vol. O₂, 84 ppm H₂S, 2.5 ppm CO; at 122 °F. Blower 1 operating.</p> <p>20. Sewer lift station by landfill entrance has a condensate odor around the carbon filter drum, with visible vapor exiting vent pipe.</p> <p>21. Met with Larry Bressman and Patti Costa (Republic):</p> <p style="margin-left: 20px;">a. We detected landfill gas odor by cattle guard crossing on main access road. Patti will have the odors investigated.</p> <p style="margin-left: 20px;">b. Dewatering is occurring at grading operations.</p> <p style="margin-left: 20px;">c. Flare 3 will remain offline, but in-place. Flare 8 will be dismantled, probably next year.</p> <p style="margin-left: 20px;">d. Condensate treatment plant will be completely dismantled by next week, along with old scale house.</p> <p style="margin-left: 20px;">e. Condensate does not need pretreatment before sewerage to City connection, per Patti.</p>	
FURTHER REVIEW NEEDED	
<p>3. Eliminate odors by sewer lift station.</p>	
Project Number: 5800	Signed: <i>Mike Lindsay</i>

[illegible]

March Site Visits

March 24, 2015:

James Aidukas (UltraSystems)

Mike Lindsay (UltraSystems)

Tarik Hadj-Hamou (SLR)



**SUNSHINE CANYON LANDFILL
MITIGATION MONITORING SITE REPORT**

Monitor: James Aidukas	Page: 1 of 2
Discipline: Project Manager	Date: 3/24/15
Site Conditions: Sunny, mid-70's°F, windy	
SITE LOG	
<p>Republic Site Manager - Rob Sherman</p> <p>Met with Tarik Hadj-Hamou (SLR) and drove the Granada Hills neighborhood checking for litter, dust, and odors. The area was free of litter and there was no blowing dust. We did observe fleeting odors at two or three locations on Timber Ridge Drive and two locations on Mission Tierra Way. The odors resembled landfill liquids. This was reported to Republic's staff. We the met Mike Lindsay, (UltraSystems) at the landfill office and signed in. We had a brief conversation with Patti Costa and notified her of the odors we observed in the neighborhood. The monitoring team proceeded to the landfill site and observed the following:</p> <ul style="list-style-type: none"> • The slopes adjacent to the existing access road at cell CC-3A were covered with a green mesh and a hydroseeded mulch. This is one of the vegetation test sites being tried by Republic. • The bypass access road construction was being worked on in multiple areas from the old condensate treatment site to the oil field access road. • The alluvial soils were being removed south of the terminal basin entrance. Areas that had all the alluvial removed were being filled with compacted soil to obtain the design elevation. The hill near the oil field access road was being excavated to lower its elevation. The transition to the exit onto San Fernando Road could not be determined and verified that they will meet City and County maximum inclination since design drawings were not reviewed. • Strong odors were observed at condensate sump CS-22. Liquid was ponding on the ground and in the lined drainage ditch. • The road way to and from Sierra Highway at the I-14 overpass was clear of trash and debris. • The leachate treatment facility had odors near the storage tanks and a Republic maintenance worker was working on the equipment. • A deep hole was observed at the sewer deep well pump location. It appeared that the soil was not adequately compacted around the concrete well when it was installed. • The terminal basin had standing water. The outlet risers had sediment blocking the drainage of the water. • One of the HDPE lined drainage channels adjacent to the access road to the City South Deck C was uplifting from the wind. • The oil field perimeter gate was locked. Public access is now not easy. • Deck C sage mitigation was doing well. Plants are now slowing down in green growth due to warm temperatures and no rain. • The oak trees in the PM-10 berm area are doing well. Some areas may be ready for planting understory trees. • The area for the relocation of the offices near the new scales is nearing completion. Rock was being placed. • The gas-to-energy facility was in full operation generating 22.3 MW and selling 18.0 MW. • The active fill area was in the cell CC-3A area adjacent to the main access road. The fill area was small and wind fences were in place. 	

Page 2 of 2, 3/24/15:

Flare Operating Conditions:

- Flare 1 - 1685°F, 2029 SCFM, -54.67" H₂O vacuum

FURTHER REVIEW NEEDED

1. Check neighborhood on future monitoring.
2. Maximum roadway slope from the realigned access road to San Fernando Road should be monitored.

COMMENTS

Signed: 



**SUNSHINE CANYON LANDFILL
MITIGATION MONITORING
SITE REPORT**

Monitor: Mike Lindsay	Page <u>1</u> of <u>2</u>
Discipline: Environmental Engineer	Date: <u>03-24-15</u> <u>Tue.</u>
Site Conditions: <u>Clear, 63-79°F, 5-15 mph</u>	
SITE LOG	
<ol style="list-style-type: none"> 1. Met with Dim Aidukas, Tarik Hadj-Hamou (UltraSystems) and checked into office and with Patti Costa (Republic). 2. Observed dark brown mulch / hydroseeding applied to slopes along main access road. 3. Bypass Access Road construction includes excavation and compaction, including dust control measures and paleo monitoring. 4. Strong odors were observed coming from leaking fluid at condensate stub pipe # CS 22. Fluid running down perimeter drainage channel. 5. Sierra Highway and adjacent areas are clear of trash and debris. 6. Drove through nearby neighborhood and detected a faint odor along Timber Ridge. 7. Leachate treatment plant (by landfill entrance) has leachate odors around site. A worker at site was performing maintenance on system pumps. 8. Oil field perimeter access gate is closed and locked (red padlock). 9. Mitigation trees above oil field are growing well, including sage with new growth. 10. City Deck C sage mitigation area is in good condition, with new growth for both sage and quail bush. 11. Flare 1 is operating at 2021 SCFM, 1694°F; gas sample measured at 31 % Vol. CH₄, 4.6 % Vol. O₂, 90 ppm H₂S, 81 ppm CO; 116 °F inlet temp. 12. Observed working face on City cell, with tippers. 	
FURTHER REVIEW NEEDED	
<ol style="list-style-type: none"> 1. Repair condensate fluid leak at stub pipe # CS 22. 	
Project Number: 5800	Signed: <u>Mike Lindsay</u>

Monitor: Mike Lindsay	Page 2 of 2
Discipline: Environmental Engineer	Date: 03-24-15 Tue.
Site Conditions:	
SITE LOG	
13. Flare 10 is operating at 2902 SCFM, 1642°F. gas sample measured at 38% Vol. CH ₄ (display says 47.1%), 5.6% Vol. O ₂ , 69 ppm H ₂ S, 476 ppm CO; Blowers 1, 2, and 4 operating.	
14. Gas-to-Energy plant is operating at Full capacity.	
15. County sage mitigation area has no new growth.	
16. Met with Patti Costa and Achaya Kelyponola (Republic):	
a. Odors were detected in neighborhood along Timber Ridge. - Achaya and Patti will investigate.	
b. Odors were detected from leaking condensate stoppage # C522. - Achaya will have it repaired.	
c. Odors were detected at leachate treatment facility. - Achaya will investigate source of odors.	
FURTHER REVIEW NEEDED	
Project Number: 5800	
Signed: Mike Lindsay	

PAGE 1 OF 3



**SUNSHINE CANYON LANDFILL
MITIGATION MONITORING
SITE REPORT**

Monitor: Tarik Hadj-Hamou, Ph.D., P.E.	PAGE 1 OF 3
Discipline: Civil – Geotechnical and Hydrology	Date: March 24, 2015
Site Conditions: Sunny and windy	
SITE LOG	
8:00 meet with UltraSystems team members Jim Aidukas and Mike Lindsay	
8:15- 9:00 tour neighborhood – faint landfill smell detected at couple of locations on Timber Ridge Drive and Mission Tierra Way	
9:15 - 2:45 site tour	
Observed the following areas: construction for new aces roads, and work face	
Access Road <ul style="list-style-type: none"> Grading activities for the new access road have resumed with excavation and filling of area. We noted that compaction tests with nuclear gauge were performed to ensure proper placement of fill. Water was used to control moisture of soil and limit dust (Photo 1) Alluvium was removed from the area where the toe berm will be constructed and the underdrain installed (Photo 2) Final layout with elevations not available for review 	
Waste face <ul style="list-style-type: none"> No issues noted 	
Stability issues <ul style="list-style-type: none"> No slope stability issues were noted during the site tour 	
Flares <ul style="list-style-type: none"> No issues noted 	
Leachate Treatment Plant <ul style="list-style-type: none"> No issues noted 	
Drainage system <ul style="list-style-type: none"> Final basin on-going clean-up, some stagnant water noted. (Photo 3) Cracks on shotcrete face of basin noted in earlier visits still open to infiltration (Photo 4) 	
FURTHER REVIEW NEEDED	
Per City Condition M-4.14.1 the maximum roadway inclination is 15% - this condition could not be monitored since no Construction Drawings were shown	
COMMENTS	
Signed:	



Photo 1: Use of water to moisture condition soil and control dust



Photo 2: Cleaning of alluvial material

PAGE 3 OF 3



Photo 3: Water in terminal basin



Photo 4: Crack on outside face of terminal basin

Appendix IV

Meeting Logs

Sunshine Canyon Landfill

Meeting Log for January 2015 Site Monitoring

January 7, 2015

Post-monitoring meeting with Patti Costa and Achaya Kelapanda, Republic's Environmental Managers.

Attendees:

Dave Nguyen, LACDPW
James Aidukas, UltraSystems
Mike Lindsay, UltraSystems

Discussion:

We had a post-monitoring meeting with Republic and provided them with our monitoring observations. We asked questions on site activities and mitigation status, and received comments and updates as follows:

- Jim Aidukas stated that we could not find water monitoring Well #CM5.
 - Patti Costa suggested that we talk with Achaya Kelapanda.
- Jim Aidukas stated that drainage to Sediment Basin B needs culverts cleared of debris after rains.
 - Patti Costa stated that they are having all the drainage systems cleaned.
- Jim Aidukas stated that the condensate tanks have strong odors from 30 yards away.
 - Patti Costa stated that they will investigate the source of the odors. Achaya Kelapanda joined the meeting.
- Jim Aidukas stated that the condensate pump truck by main entrance sewer lift station was odorous.
 - Patti Costa stated she will notify the contractor to correct the situation.
- Jim Aidukas stated that some water monitoring wells are not marked.
 - Achaya Kelapanda stated that they will make sure the wells are all marked properly.

The meeting was then adjourned.

Sunshine Canyon Landfill

Meeting Log for February 2015 Site Monitoring

February 26, 2015

Post-monitoring meeting with Larry Bressman and Patti Costa, Republic's Division Manager and Environmental Manager, respectively.

Attendees:

Karlo Manalo, LACDPW
Gabriel Esparza, LACDPW
James Aidukas, UltraSystems
Tarik Hadj-Hamou, UltraSystems
Mike Lindsay, UltraSystems

Discussion:

We had a post-monitoring meeting with Republic and provided them with our monitoring observations. We asked questions on site activities and mitigation status, and received comments and updates as follows:

- Jim Aidukas stated that we detected landfill gas odor by the cattle guard crossing on the main access road.
 - Patti Costa will have the odors investigated.
- Patti Costa stated that dewatering is occurring at the grading operations.
- Patti Costa stated that Flare 3 will remain offline, but in-place. Flare 8 will be dismantled, probably next year.
- Patti Costa stated that the condensate treatment plant will be completely dismantled by next week, along with the old scale house.
- Patti Costa stated that condensate does not need pretreatment before sewerage to the City connection.
- Jim Aidukas stated that the sewer lift station by the landfill entrance has condensate odors around the carbon filter drum.
 - Patti Costa will have the odors investigated.
- Patti Costa stated that the Sediment Basin A drainage exit ditch is temporarily blocked for excavation work.
- Patti Costa stated that hydroseeding will occur this fall, rather than this spring as stated in the latest vegetation report.
- Patti Costa stated that the Bypass Access Road project will restart next week. Traffic will be re-routed in mid-June.

The meeting was then adjourned.

Sunshine Canyon Landfill

Meeting Log for March 2015 Site Monitoring

March 24, 2015

Post-monitoring meeting with Patti Costa and Achaya Kelapanda, Republic Environmental Managers.

Attendees:

James Aidukas, UltraSystems
Tarik Hadj-Hamou, UltraSystems
Mike Lindsay, UltraSystems

Discussion:

We had a post-monitoring meeting with Republic and provided them with our monitoring observations. We asked questions on site activities and mitigation status, and received comments and updates as follows:

- Jim Aidukas stated that we detected odors in neighborhood along Timber Ridge.
 - Patti Costa and Achaya Kelapanda will have the odors investigated.
- Mike Lindsay stated that we detected odors from leaking fluid at condensate stub pipe number CS22.
 - Achaya Kelapanda will have leak repaired.
- Jim Aidukas stated that we detected odors at the leachate treatment facility by the landfill entrance.
 - Achaya Kelapanda will have the odors investigated and resolved.

The meeting was then adjourned.