

COLORADO BOULEVARD SPECIFIC PLAN

Attachment A

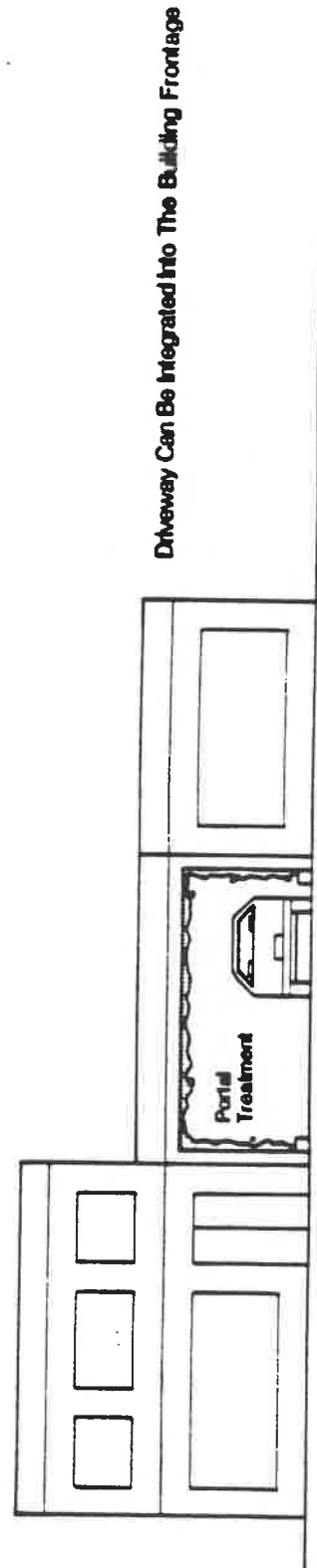
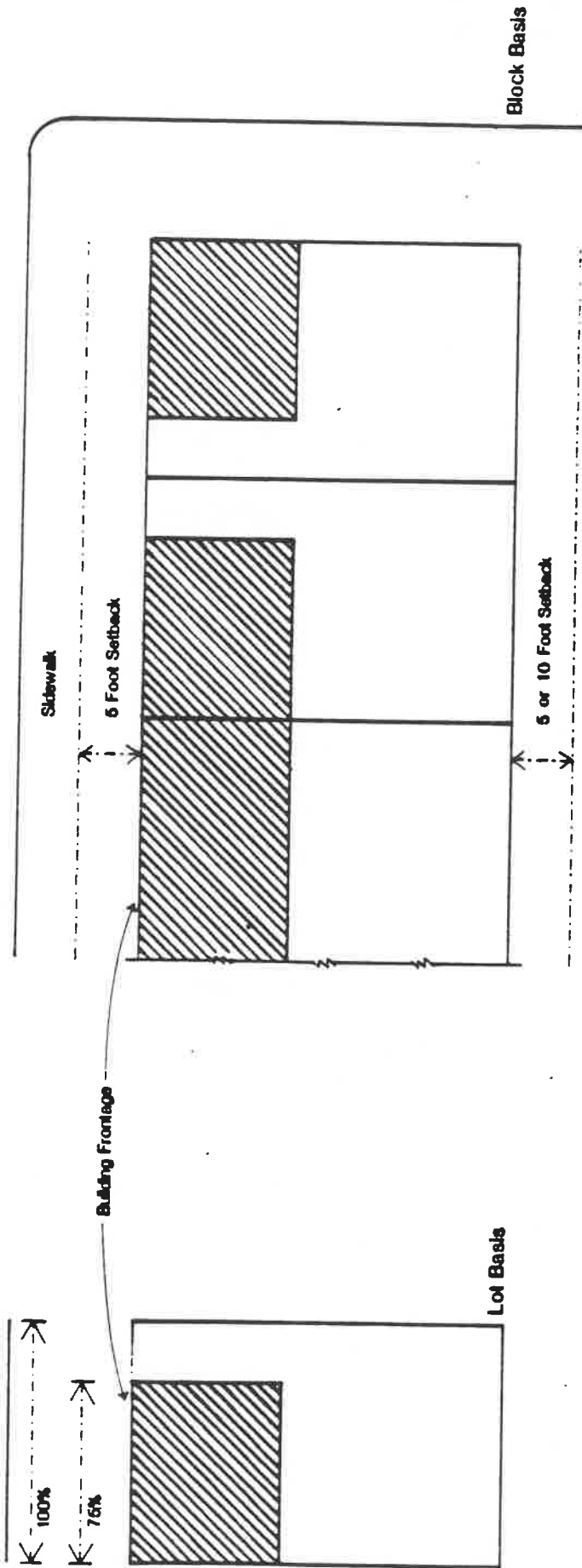
20400509819

CPC No. 87-0386-SP

April 1991
Los Angeles
City Planning Department

Building Frontage

The Ground Floor Building Frontage Shall Not Be Less Than 75% Of The Linear Street Frontage Of A Lot



Driveway Can Be Integrated Into The Building Frontage

Figure 1

20400500820

Height Limitations For Subareas 1, 2 and 3

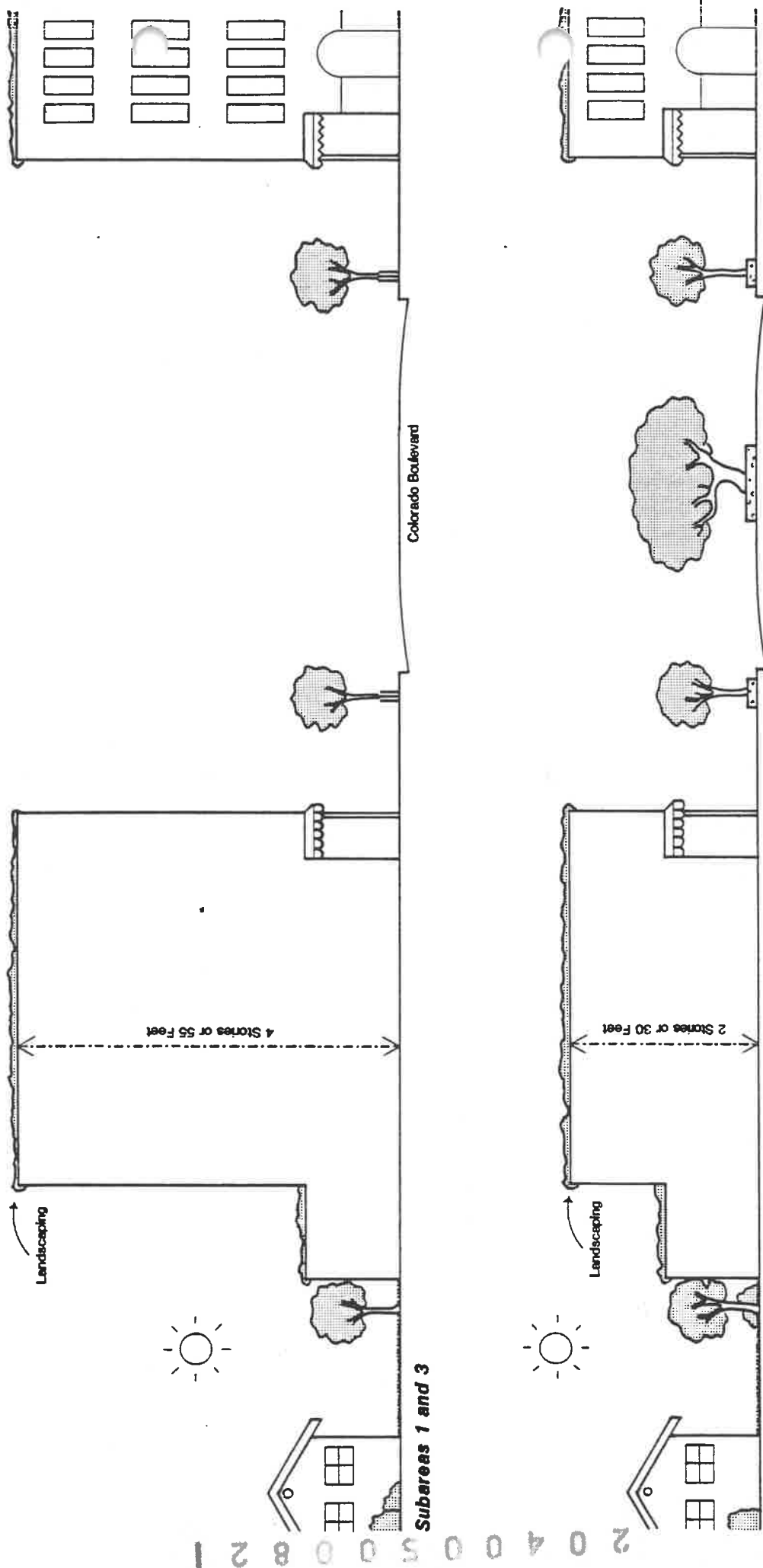
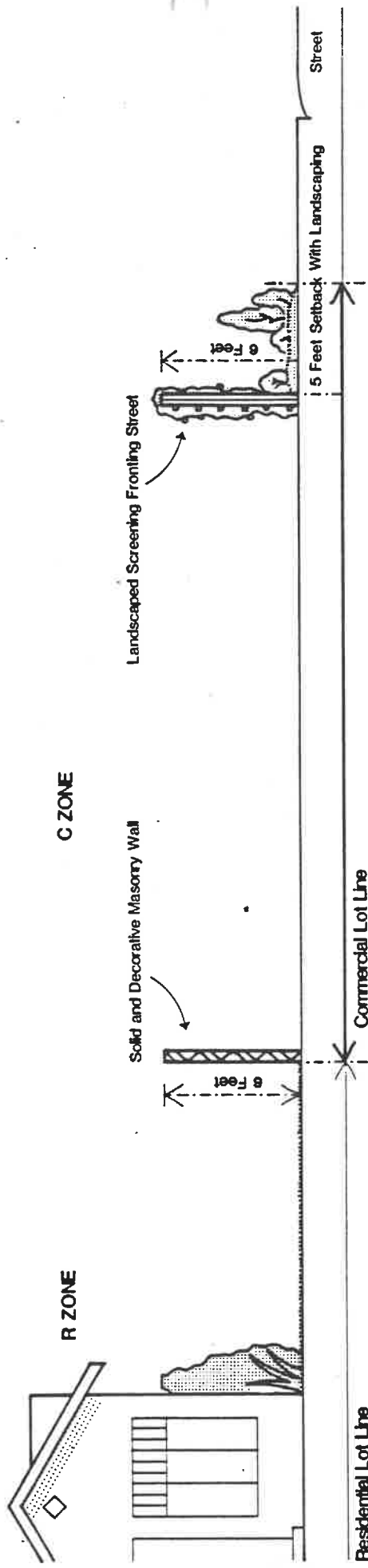


Figure 2

Landscaped Screening For Open Storage Areas Fronting Street And/Or Abutting Residential Use



Landscaped Screening For Parking Lots Fronting Street And Abutting Residential Uses

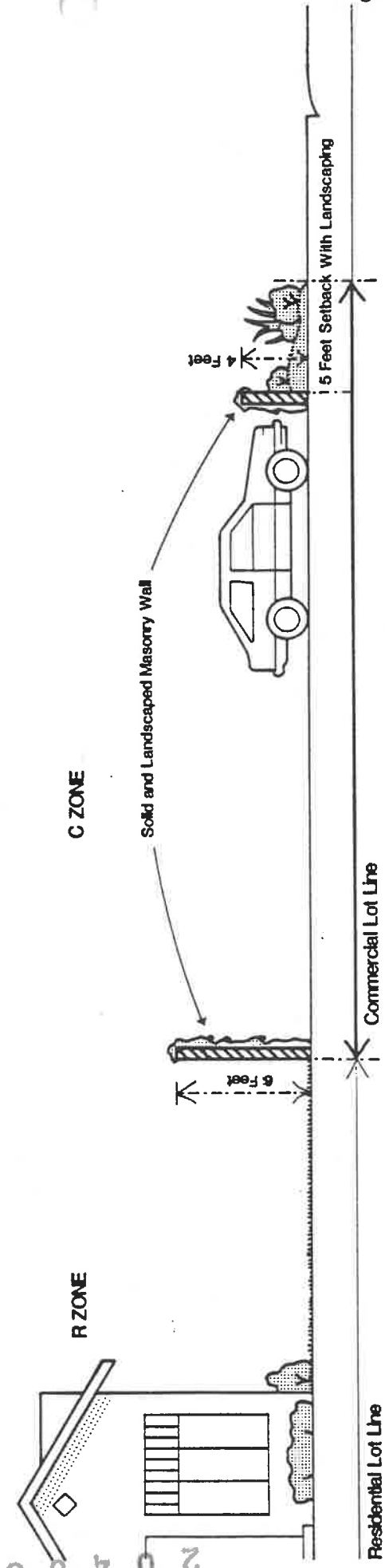


Figure 3

Building Envelope For Commercial Lots In Subareas 1 and 3

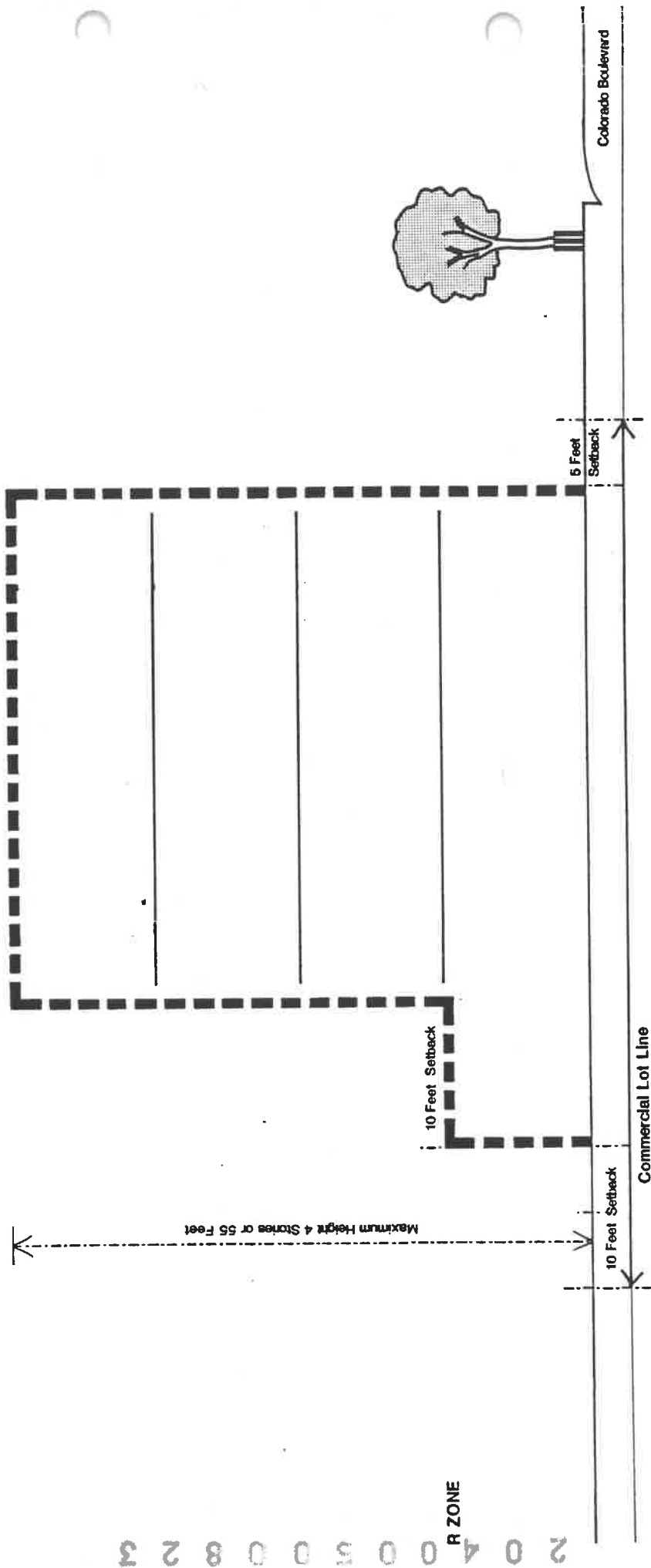


Figure 4

Building Envelope For Commercial Lots In The Pedestrian Core Lot Depth Equal To Or Greater Than 150 Feet

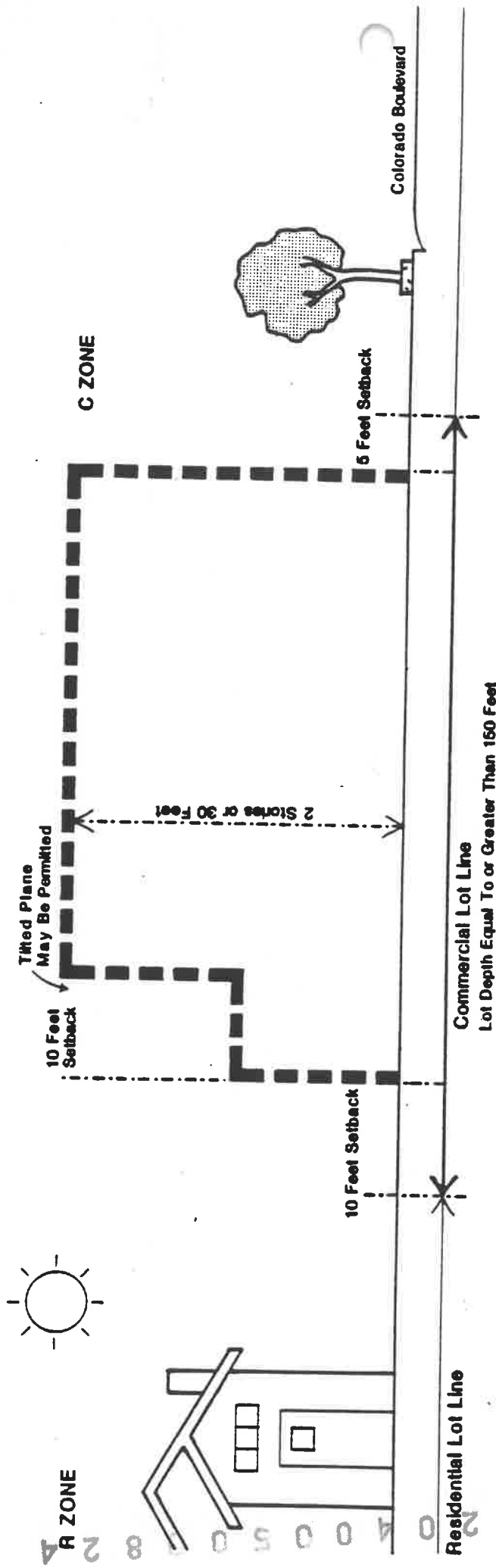


Figure 5

Building Envelope For Commercial Lots In The Pedestrian Core Lot Depth Less Than 150 Feet

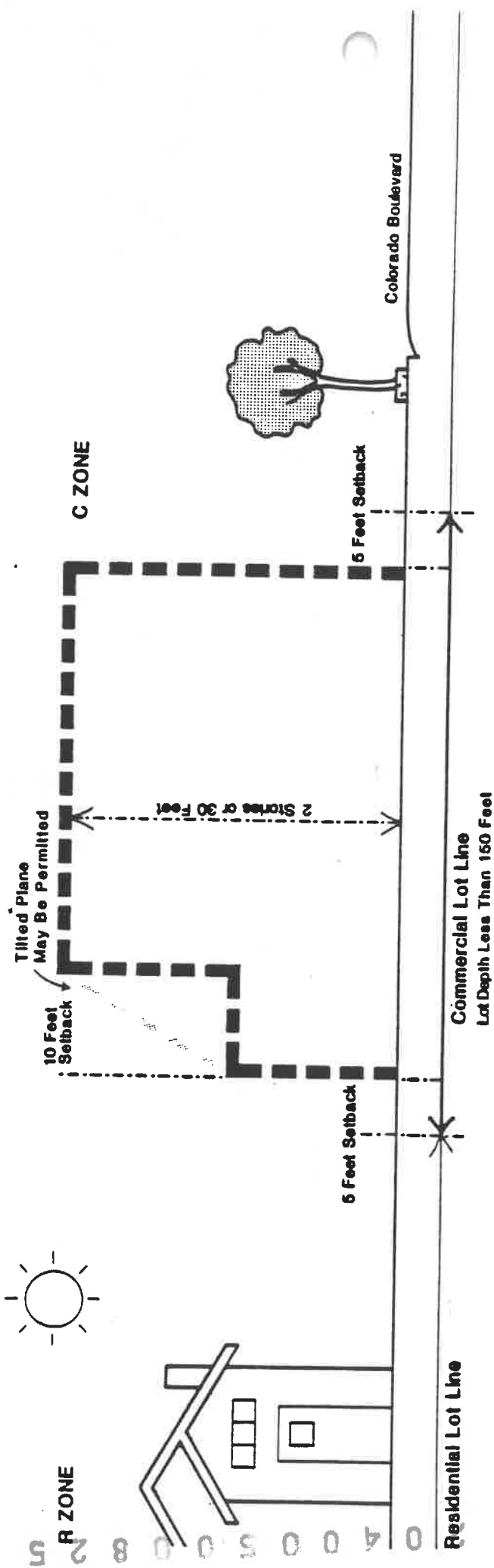


Figure 6

Rear Yard Landscaped Buffer For Commercial Building When Built Up To Setback Line

Subareas 1, 2, and 3.

2
0
4
0
0
5
0
0
8
2
6

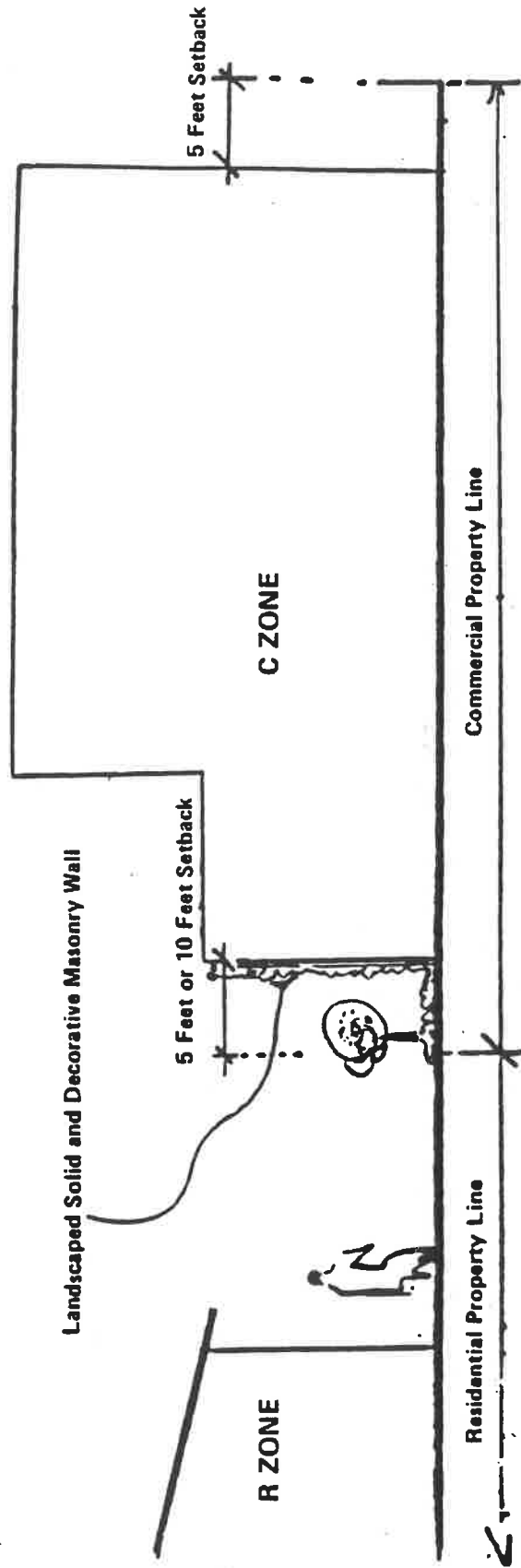
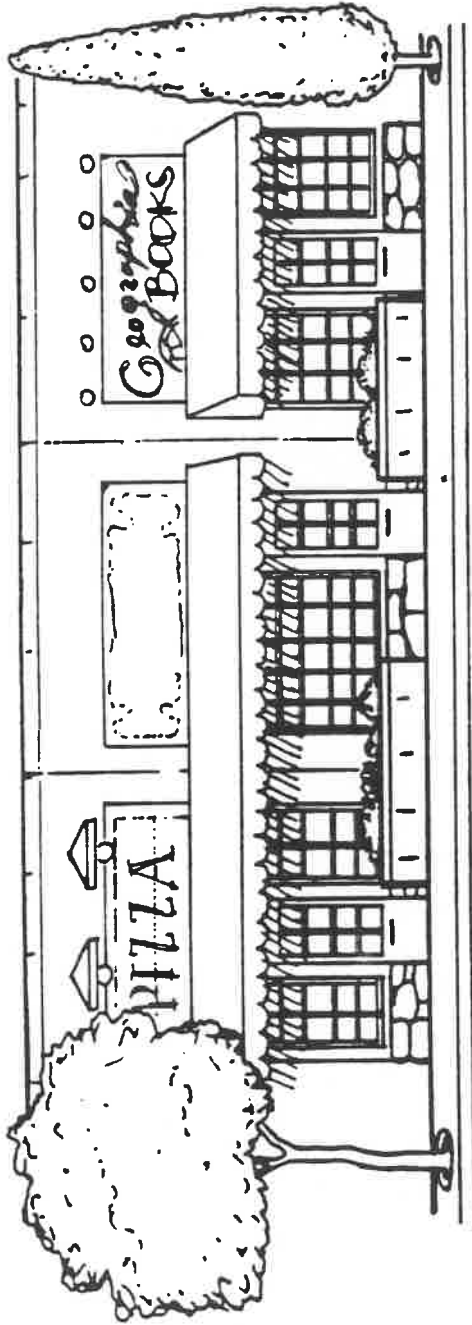


Figure 7

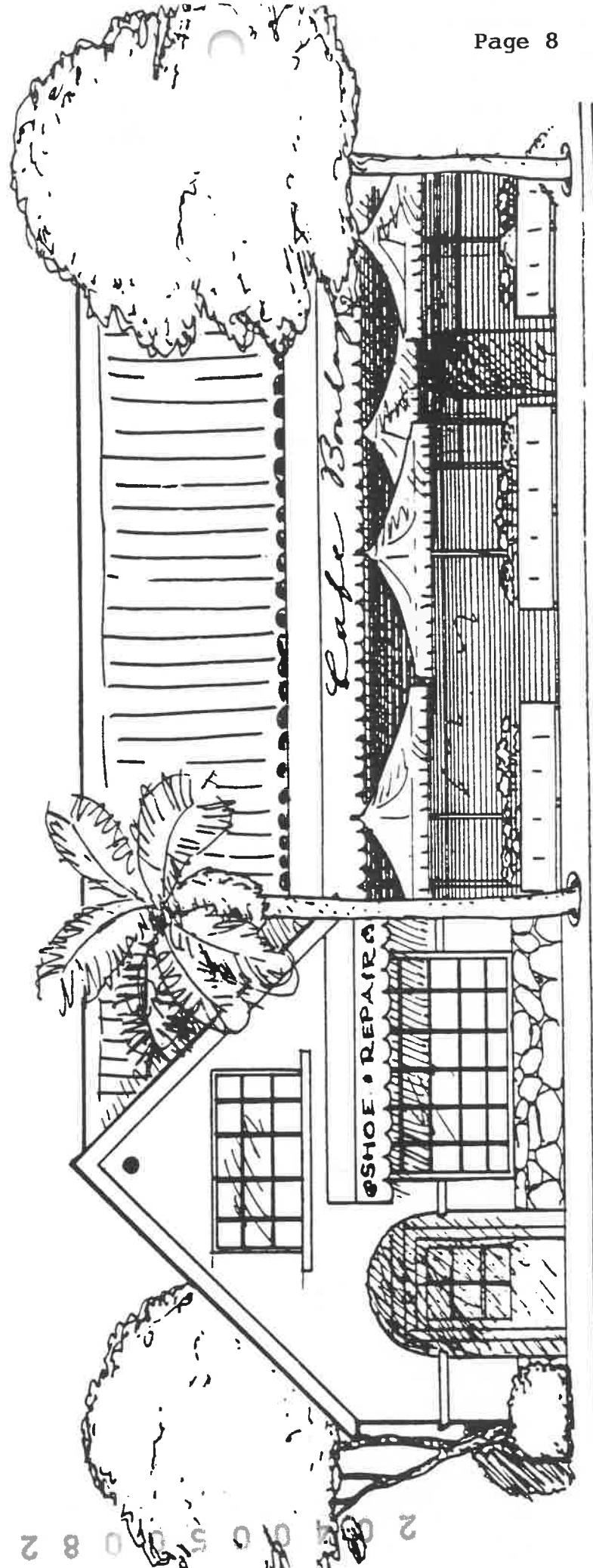
General Design Guidelines For Advisory Purposes

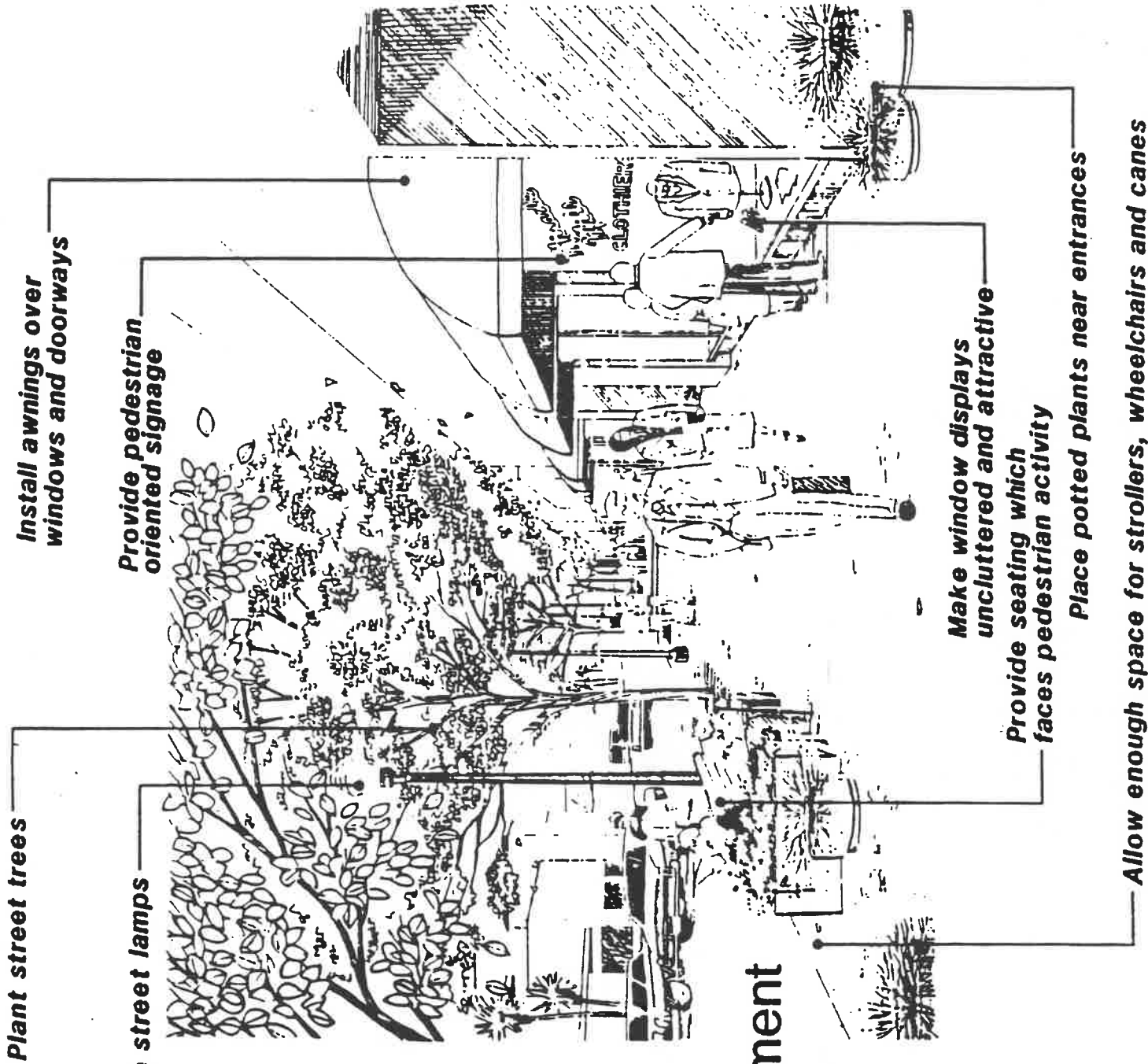


- Design clear, simple, signage.
- Hang signs and awnings at a common height along contiguous shops of the same building.
- Establish uniform facade treatment consistent with the building design.

Awnings

20050827





Sidewalk Treatment

Plant street trees

Use pedestrian-scale street lamps

Install awnings over windows and doorways

Provide pedestrian oriented signage

Make window displays uncluttered and attractive

Provide seating which faces pedestrian activity

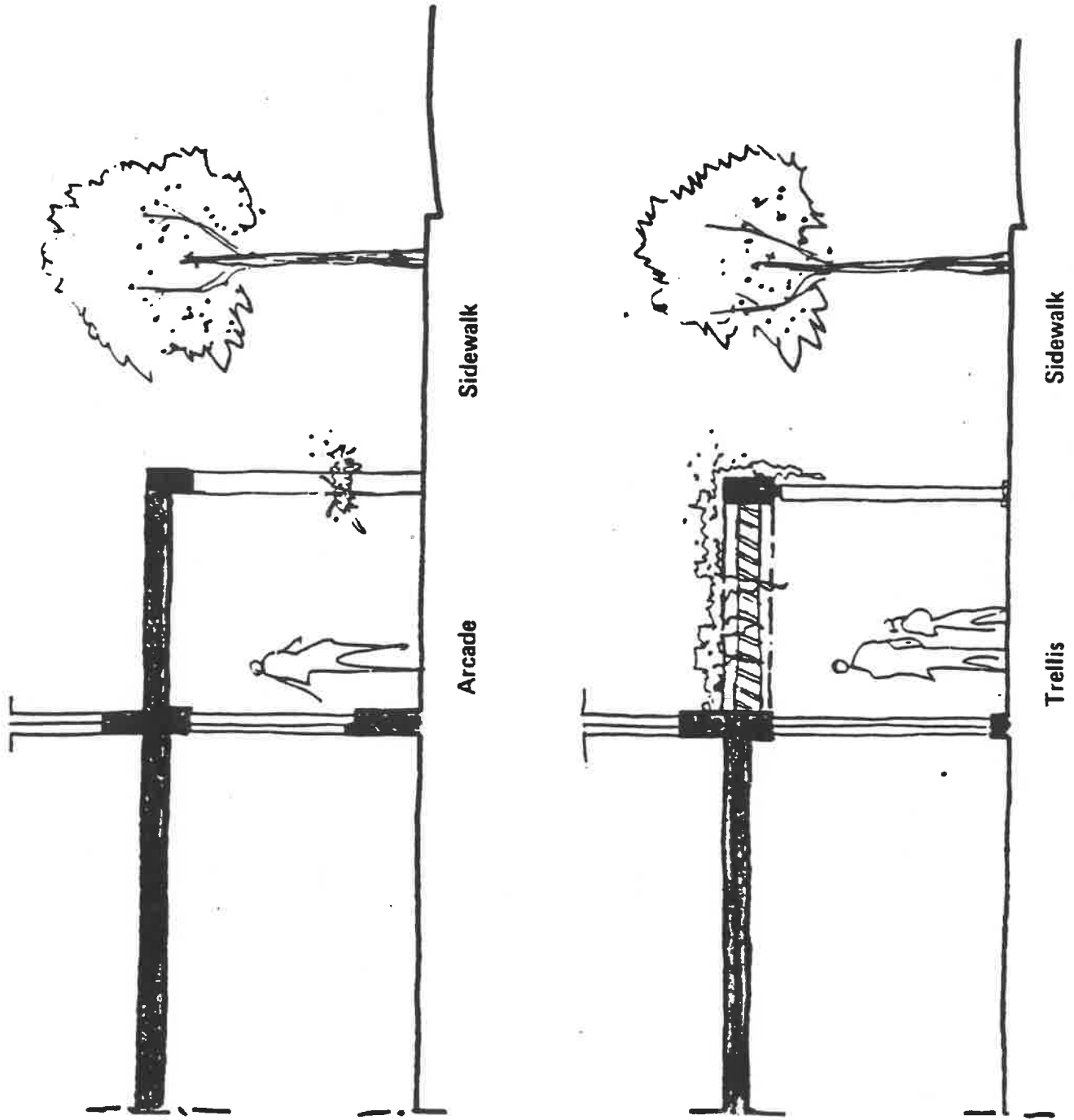
Place potted plants near entrances

Allow enough space for strollers, wheelchairs and canes

20400500828

Figure 9

Arcades And Trellises



2 0 4 0 0 5 0 0 8 2 9

Figure 10

Samples Of Street Tree Treatments

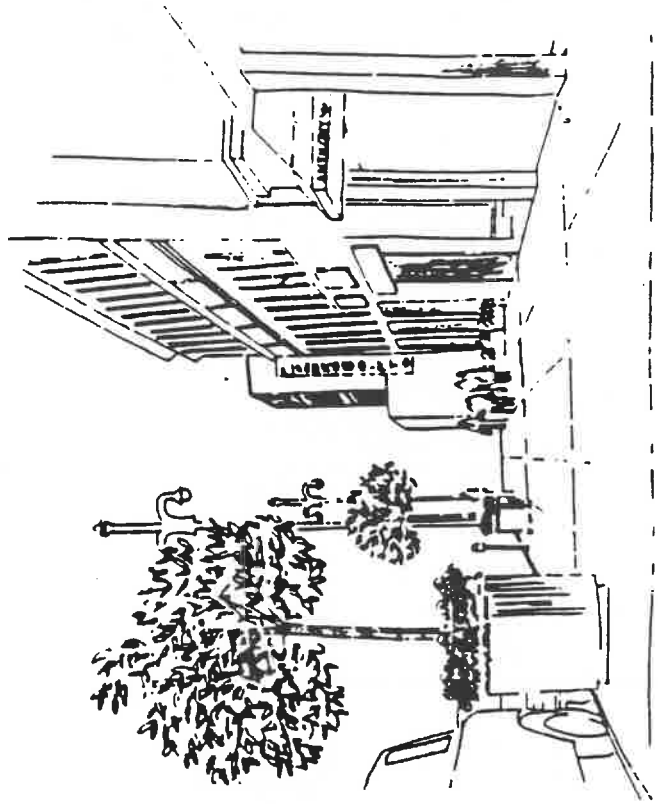
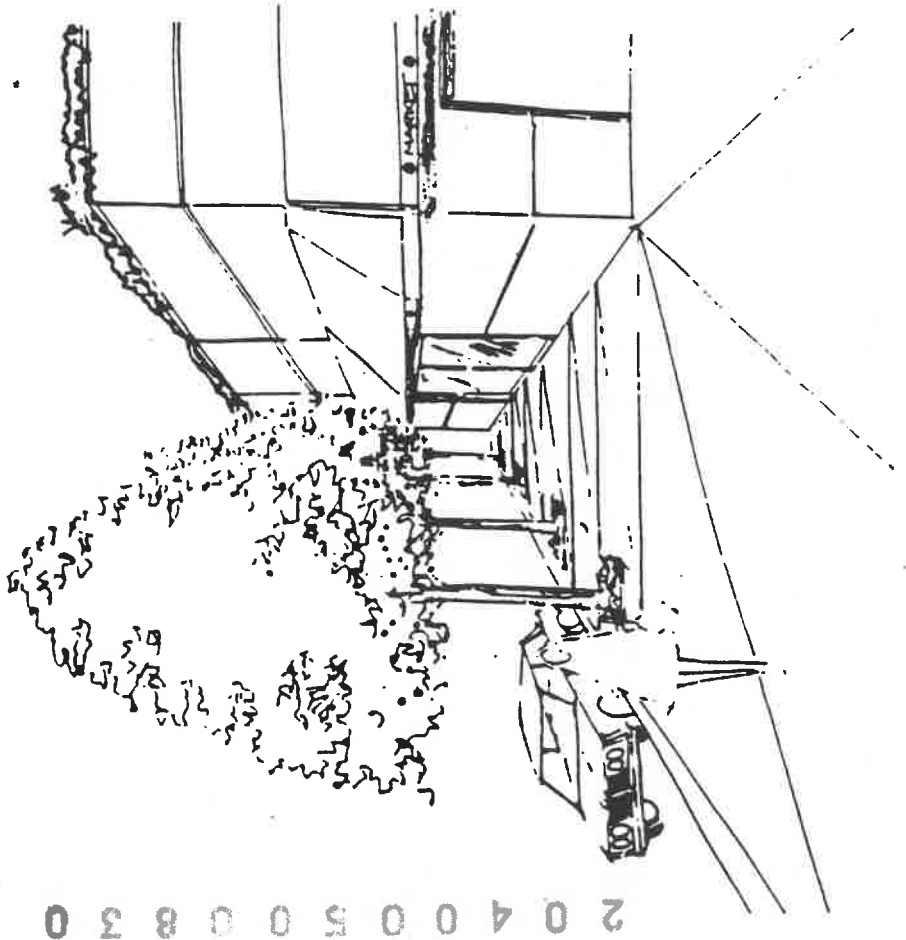
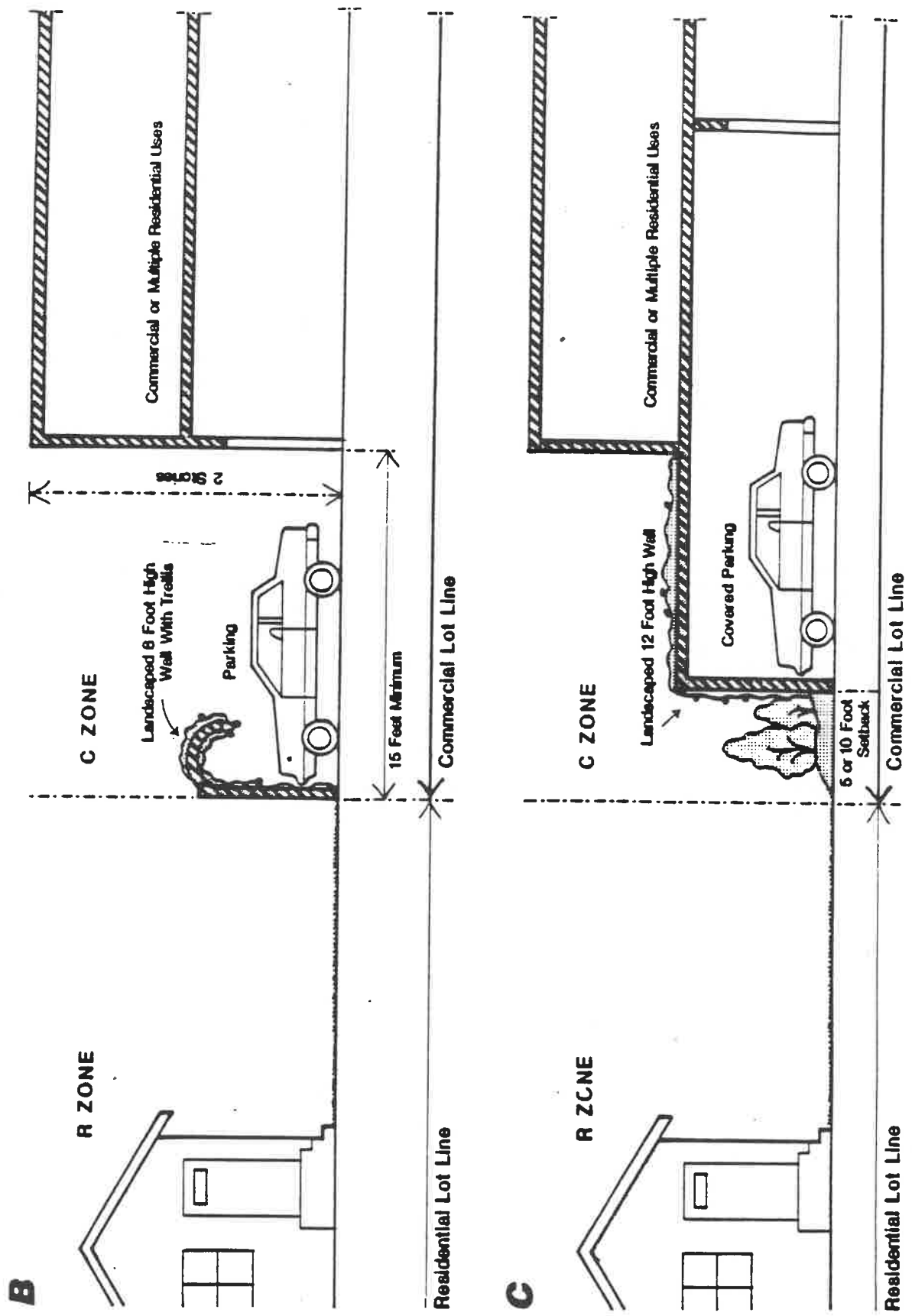


Figure 11

2 0 4 0 0 5 0 0 8 3 0

Parking Treatment In The Rear Of Commercial Lots

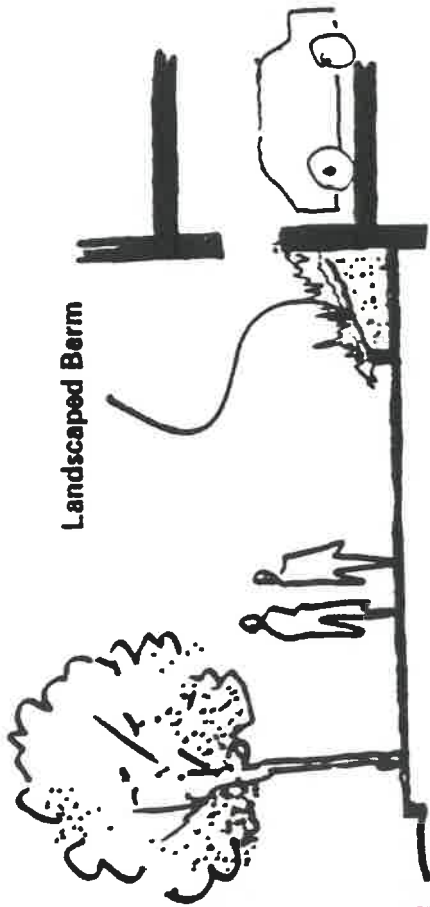


Note: If covered parking is provided (see figure C), the wall abutting the R ZONE shall be landscaped and set back 5 feet or 10 feet from the Commercial Lot Line

Figure 12

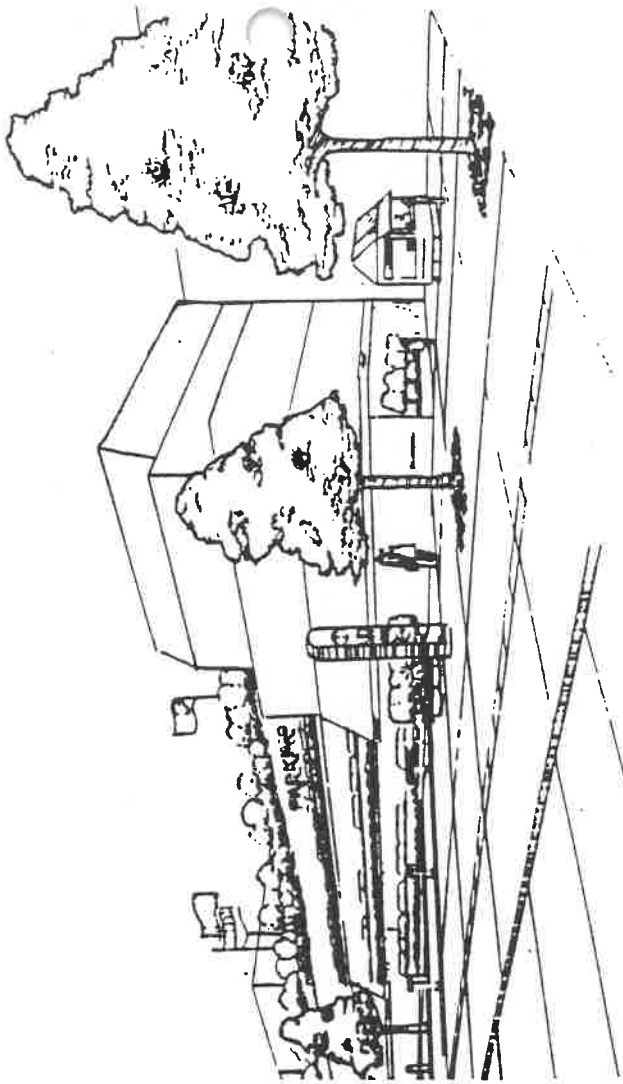
2 0 4 0 0 5 0 0 8 3 1

Samples Of Landscaping Features And Their Integration Into The Built Form

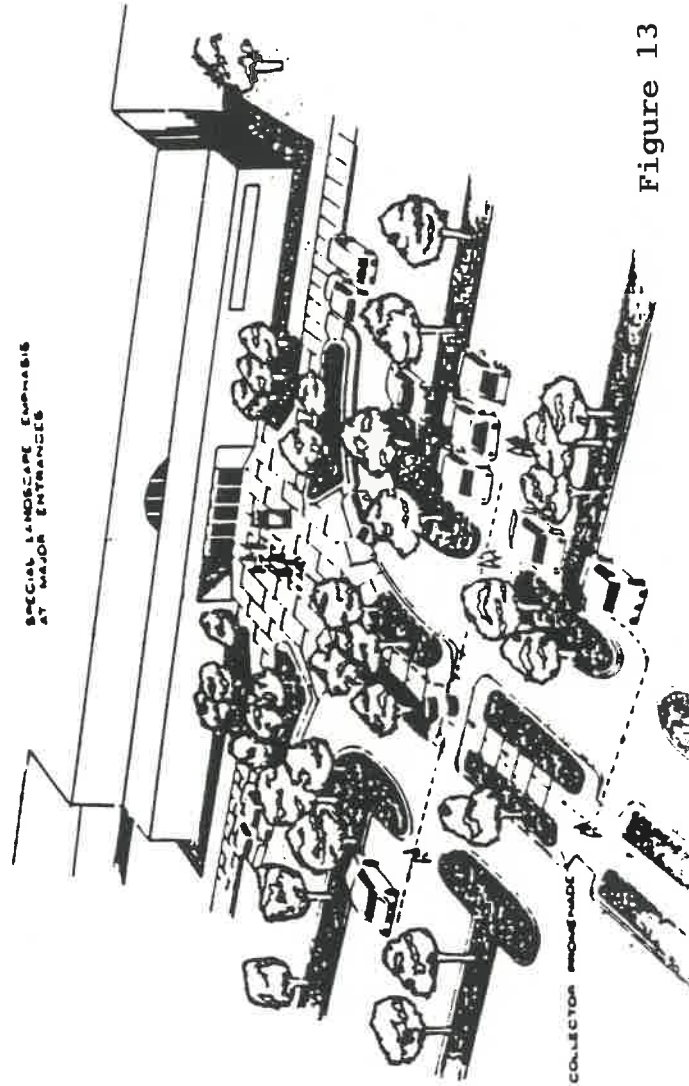


Landscaped Berm

Example of Landscape Feature



Parking Structure Concept



SPECIAL LANDSCAPE EMPHASIS AT MAJOR ENTRANCES

COLLECTOR RAMP

20400500832

Landscaped Buffers Between Commercial And Residential Use

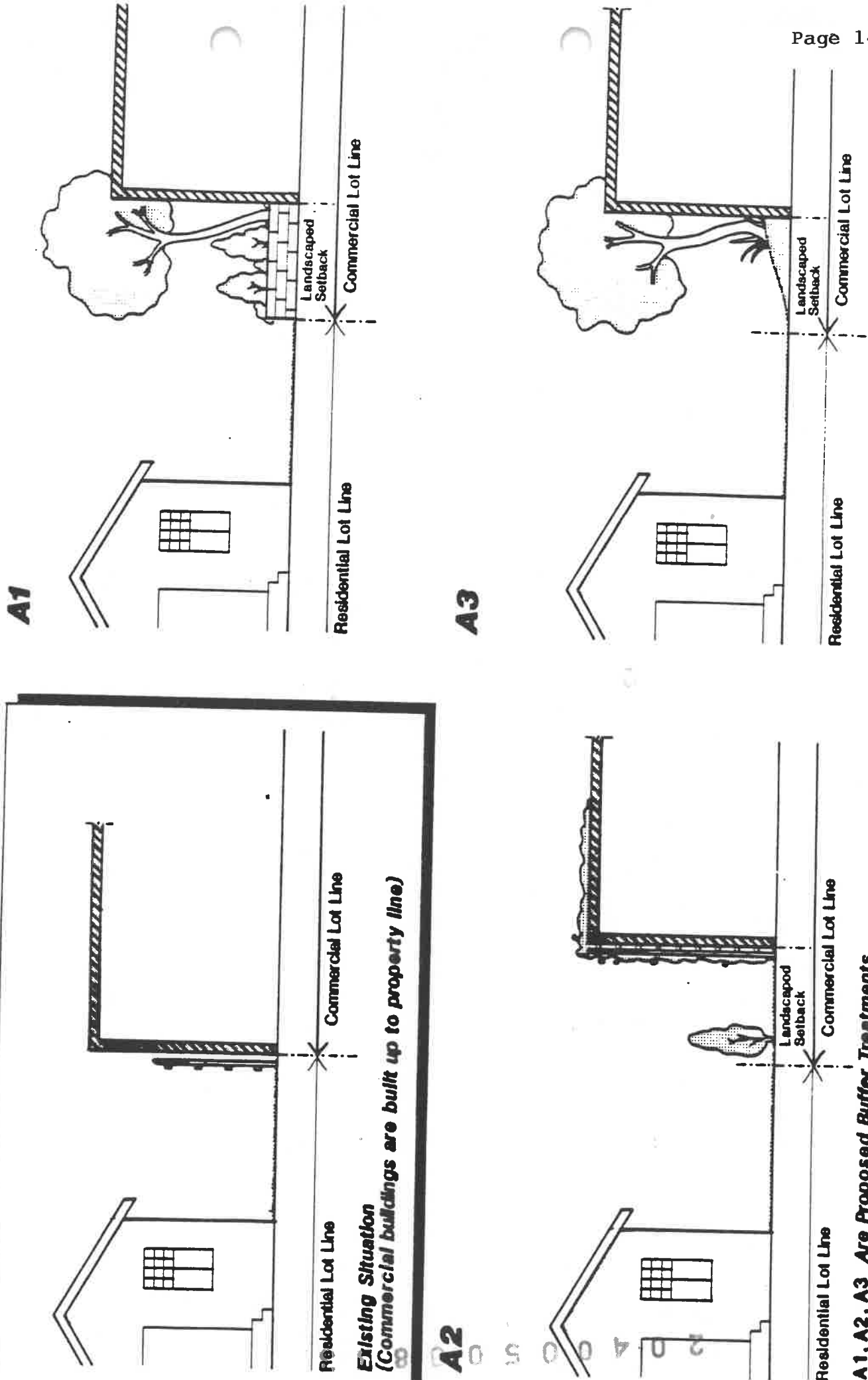
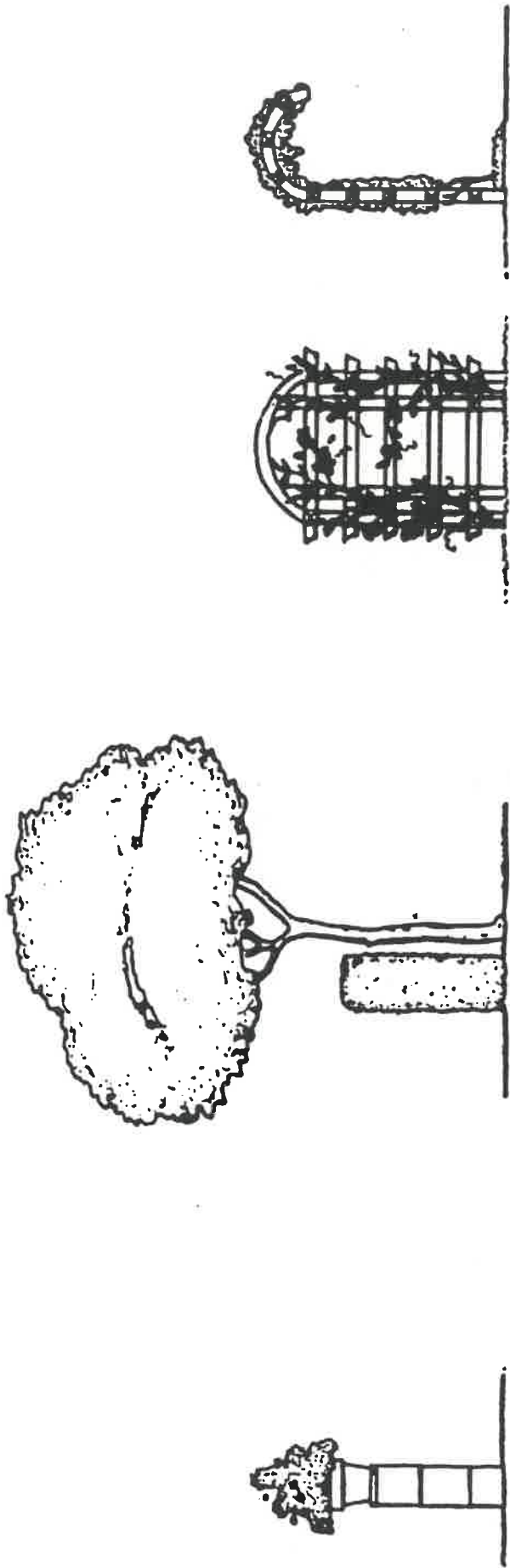


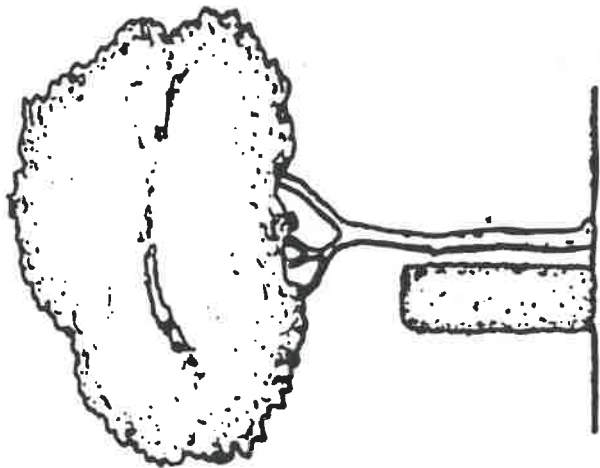
Figure 14

A1, A2, A3 Are Proposed Buffer Treatments

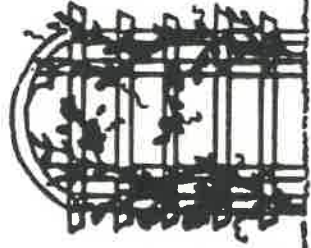
Treatment Of Buffer/Screening



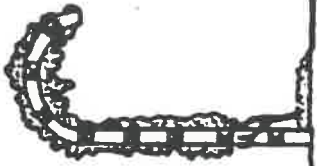
A Concrete Block Wall and Flowerpot



B Hedge and Tree



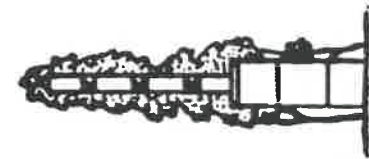
C Trellis Variations Front and Side



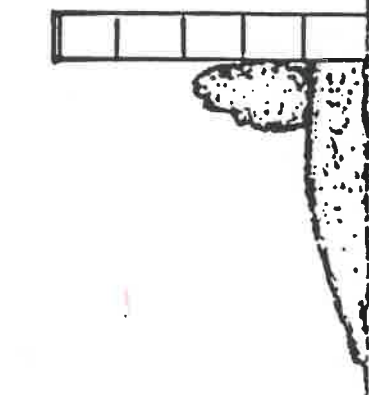
D Trellis Variations Front and Side



E Hedge



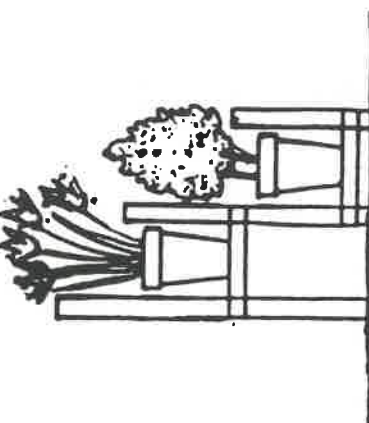
F Landscaped Lattice Mounted on



G Landscaped Lattice Mounted on



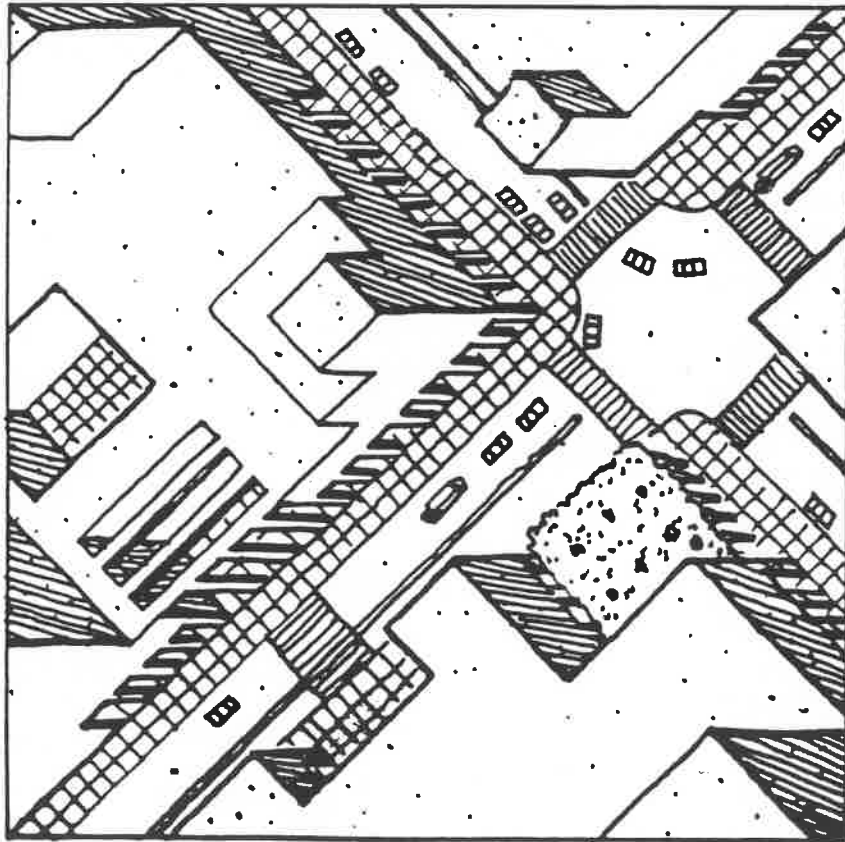
H Landscaped Berm and Block Wall



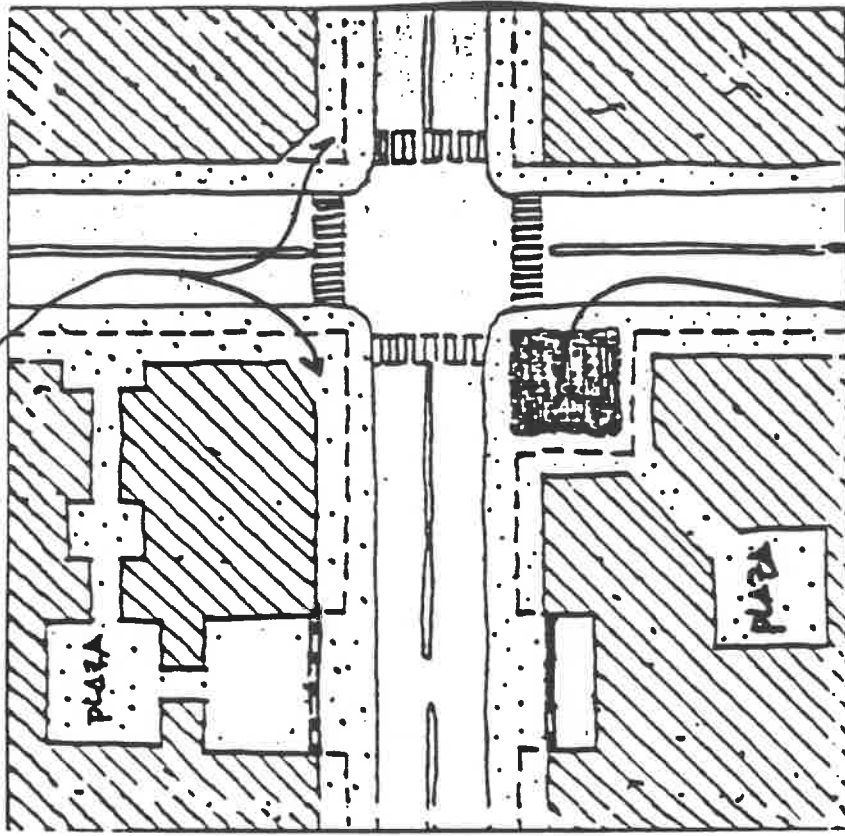
I Lattice and Flowerpots

4
8
0
5
0
2

Corner Lot Treatment



Corner Cut



Corner Pocket Park

Height Exceptions May Be Permitted For Corner Tower Not To Exceed 15 Feet Above Height Limitation

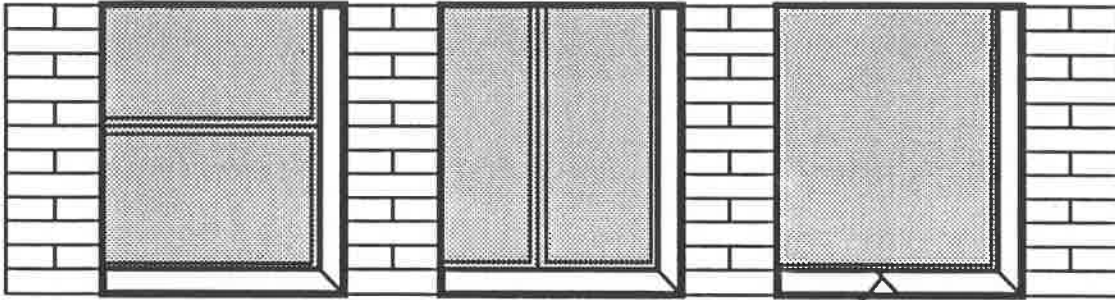
Building May be Setback In Order To Provide For Landscaped Open Space

Figure 16

2 0 4 0 0 5 0 0 8 3 5

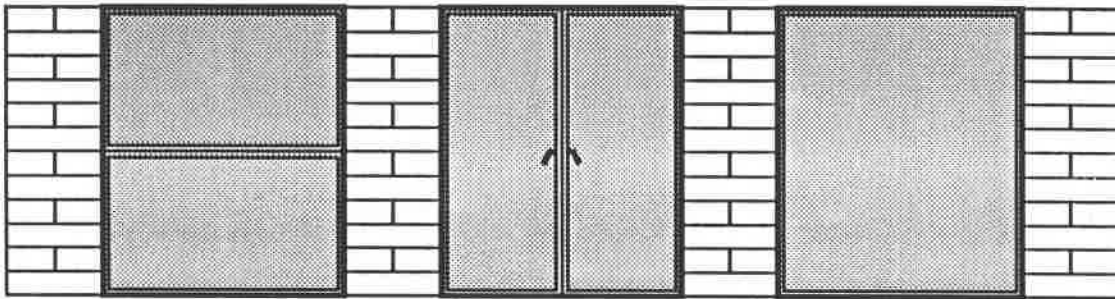
RECESSED WINDOWS AND DOORS

WINDOWS



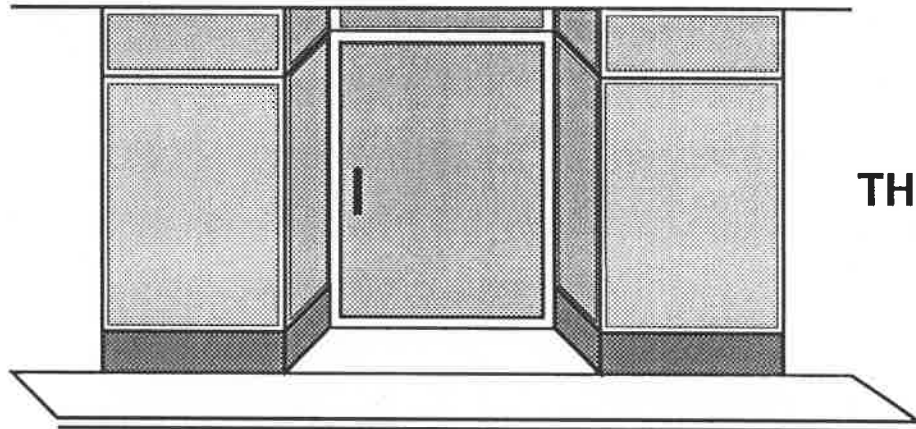
THIS

3" MIN.

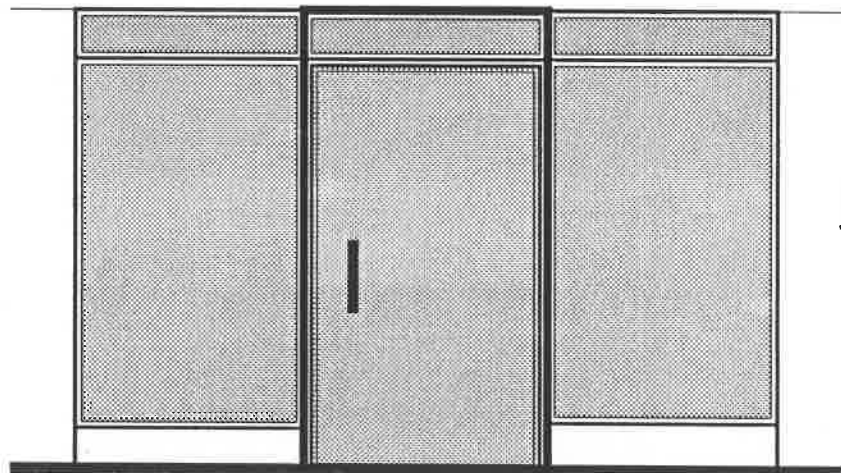


NOT THIS

DOORS



THIS

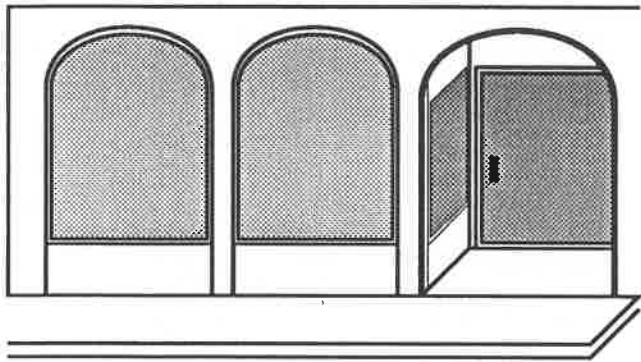


NOT THIS

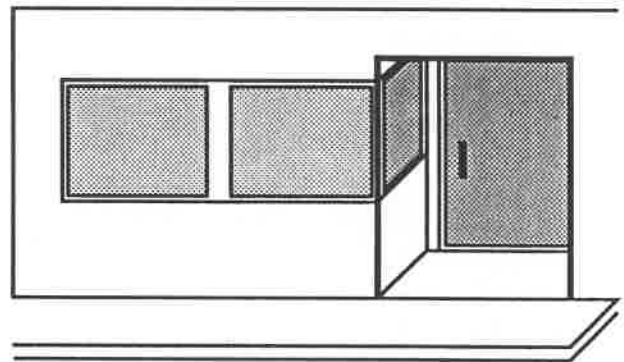
20400500836

Figure 17

THIS



NOT THIS



20400500837

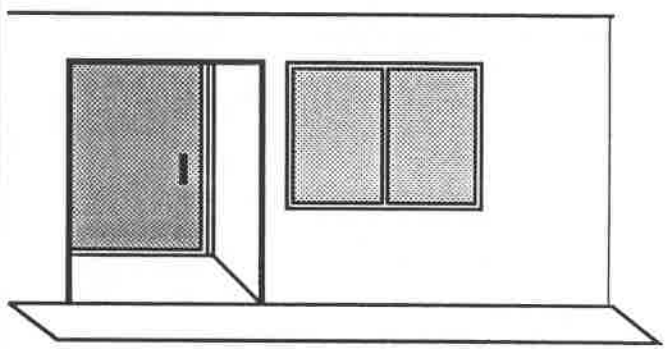
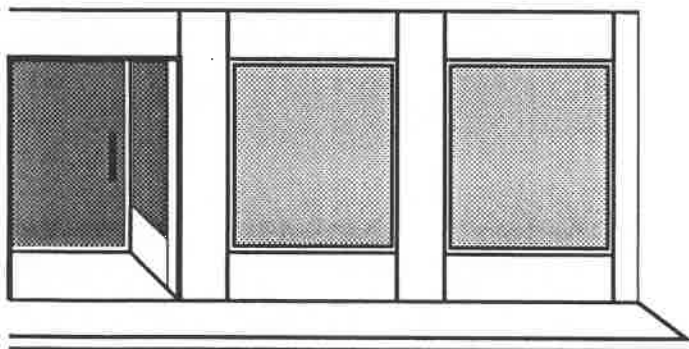
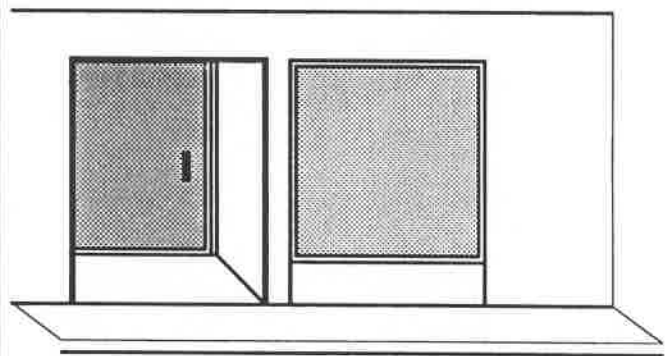
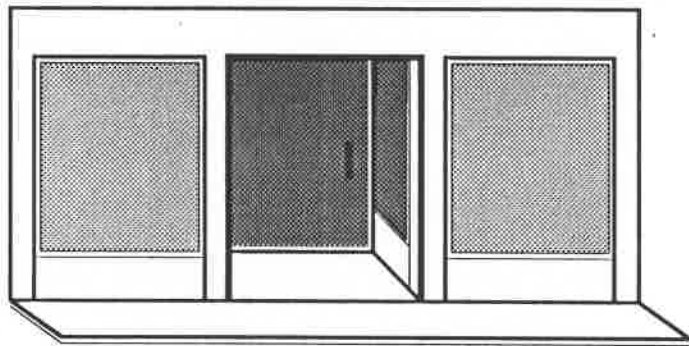


Figure 18

20400500838

BELT COURSE

THIS

NOT THIS

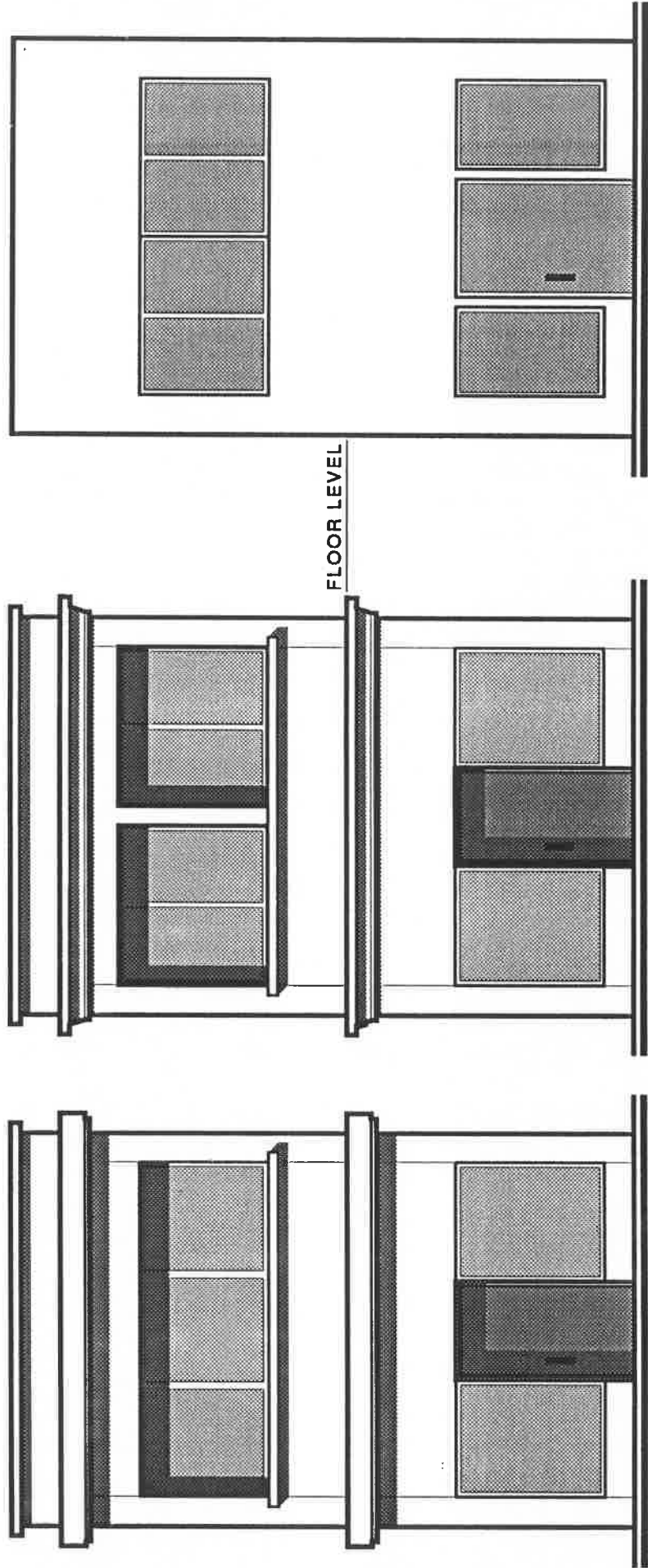
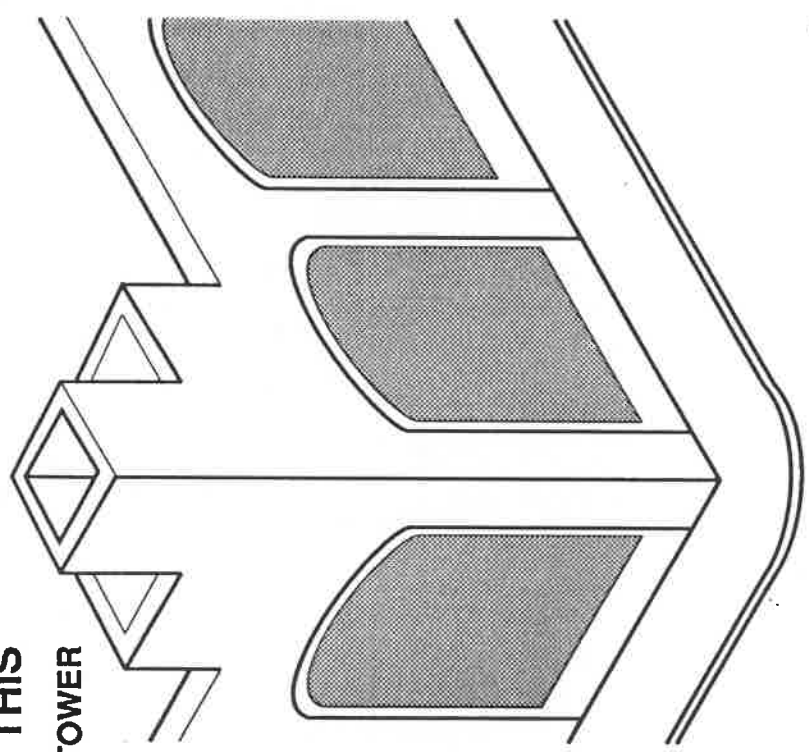


Figure 19

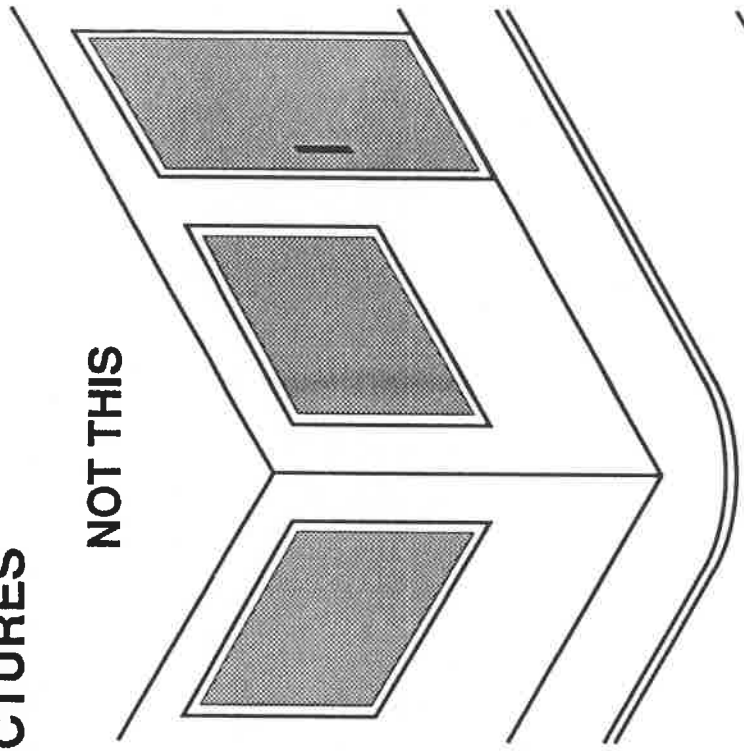
20400500839

CORNER STRUCTURES

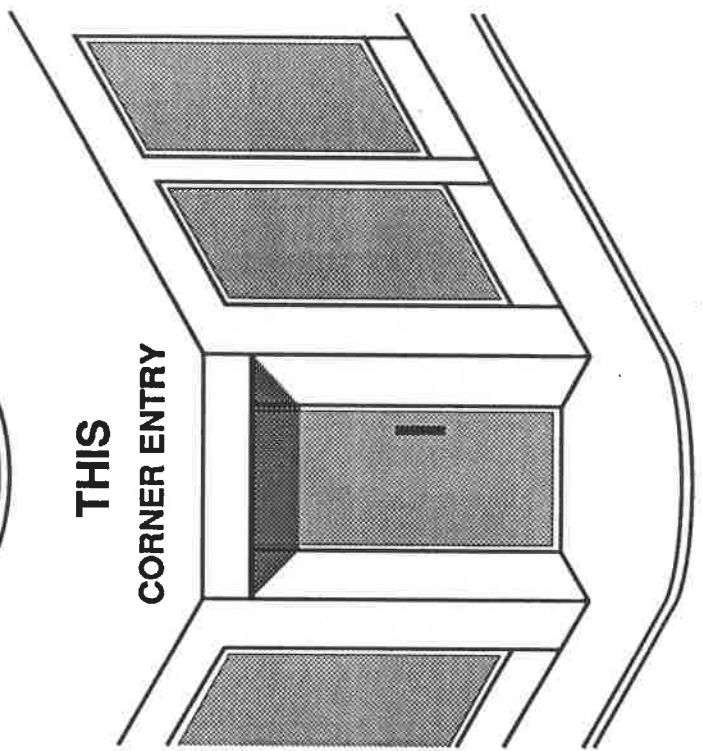
**THIS
TOWER**



NOT THIS



**THIS
CORNER ENTRY**



**THIS
CURVILINEAR**

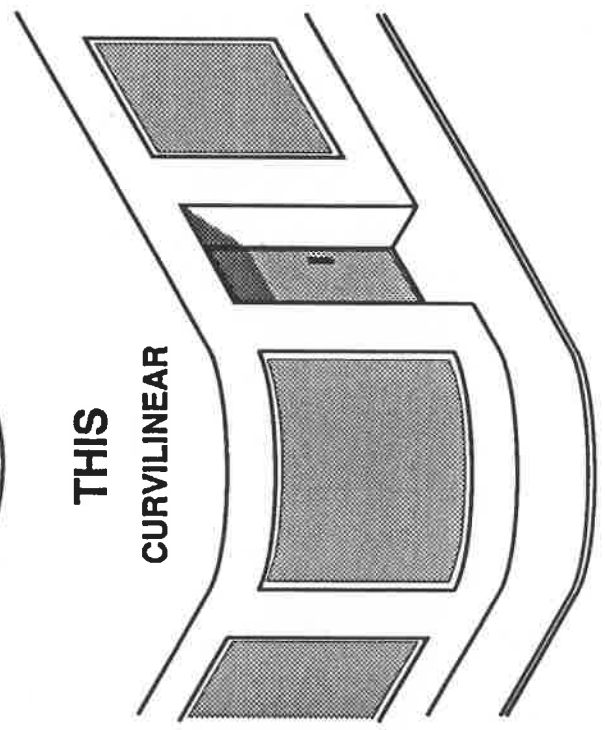
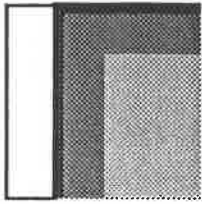
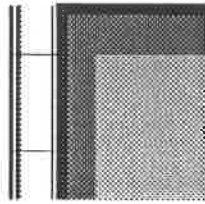


Figure 20

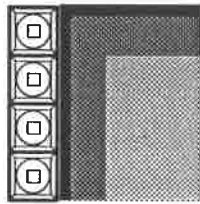
WINDOWS - SURROUNDING DETAIL OF SIDES OF STRUCTURAL OPENING



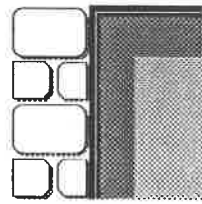
PLAIN



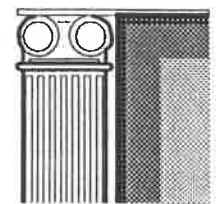
MOLDED TRIM



TILED TRIM

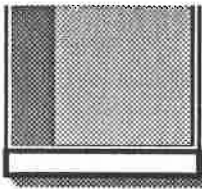


QUIONS

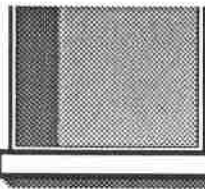


ROUND OR FLAT COLUMNS ATTACHED TO WALL SURFACE

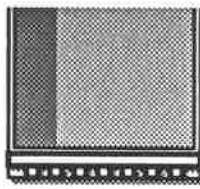
WINDOWS - DETAIL AT BOTTOM OF STRUCTURAL OPENING (SILLS)



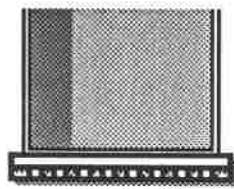
SLIPSILL (EVEN WITH SIDES OF OPENING)



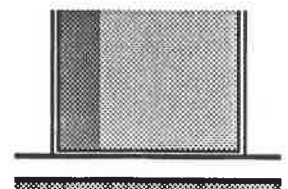
LUGSILL (EXTENDS BEYOND SIDES OF OPENING)



DECORATED SLIPSILL

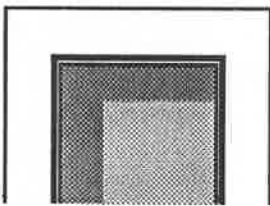


DECORATED LUGSILL

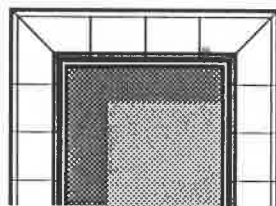


CONTINUOUS SILL

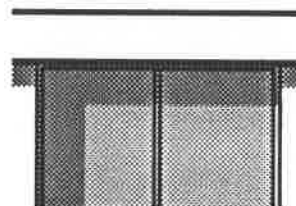
WINDOWS - SURROUNDING DETAIL OF TOP OF STRUCTURAL OPENING



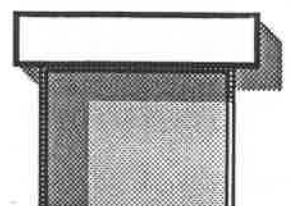
PLAIN MOLDING



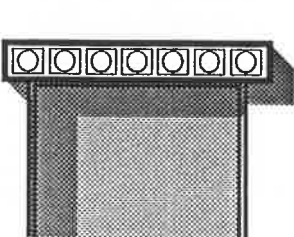
MOLDED TRIM



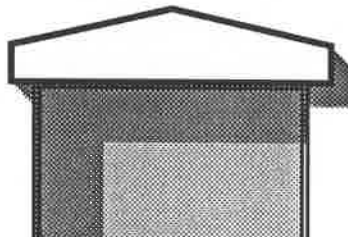
CONTINUOUS TRIM ABOVE



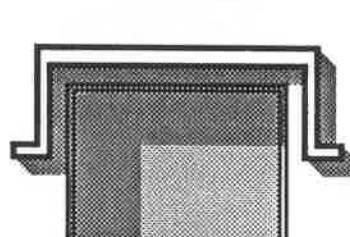
PLAIN LINTEL



DECORATED LINTEL



SHAPED LINTEL



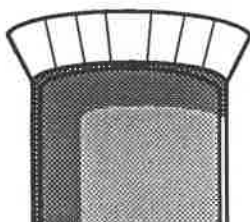
LABEL



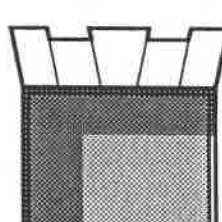
FLAT WITH BRICKS OR STONE SET VERTICALLY



FLAT OR ARCHED WITH RADIATING BRICKS OR STONES



FLAT WITH ALTERNATING RADIATING BRICKS OR STONES



FLAT WITH STEPPED RADIATING BRICKS OR STONES

Figure 21

20400500840