

**Sunshine Canyon Landfill
Independent Monitor
Quarterly Site Monitoring Status Report
July 1, 2014 – September 30, 2014**

Prepared For:

City of Los Angeles Department of City Planning

And

County of Los Angeles Department of Regional Planning



Prepared By:



UltraSystems
environmental | management | planning

16431 Scientific Way
Irvine, California 92618

Prepared On:

February 11, 2015

[This page is blank for printing]

CERTIFICATION STATEMENT

February 11, 2015

The attached Quarterly Site Monitoring Status Report for the Sunshine Canyon Landfill dated February 11, 2015, is the Third Quarterly Report for 2014, issued by UltraSystems. This report covers the monitoring period from July 1, 2014 through September 30, 2014 and is prepared for the City of Los Angeles Department of City Planning and the County of Los Angeles Department of Regional Planning.

I, James T. Aidukas, Project Manager for the Mitigation Monitoring Services of the Sunshine Canyon Landfill, certify that the statements in the Quarterly Report and the referenced monthly reports reflect the site conditions observed and compliance status noted by me and other qualified experts during the stated site visits.

Signed,



James T. Aidukas

Project Manager

[This page is blank for printing]

Contents

Quarterly Status Report.....	1
Site Visits During the Quarter.....	2
Definition of Terms.....	2
Status Summary	2
Compliant.....	2
Non-Compliant	3
Further Review Needed.....	3
Summary of Requested Documents.....	14
Conclusions	14

Sunshine Canyon Landfill Mitigation Monitoring – 2014 Third Quarter Summary/ City
(see Excel spreadsheets)

Sunshine Canyon Landfill Mitigation Monitoring – 2014 Third Quarter Summary/ County
(see Excel spreadsheets)

Appendices

Appendix I – Excel Summary Further Review Needed Comments Reference I-j through I-m

Appendix II – Photo Location Map and Relevant Site Photos

Appendix III – Quarterly Site Visits

Attendees by Date and Monitoring Site Reports

Appendix IV – Meeting Logs

Appendix V – Landfill GPS Data

GPS Data Logs

GPS Maps

GPS Elevation Data Tables

[This page is blank for printing]

Quarterly Status Report

This Quarterly Status Report is a compilation of the period's monthly Site Monitoring. After each site visit, the UltraSystems monitors who went to the Sunshine Canyon Landfill site each wrote a Mitigation Monitoring Site Report, updated the Mitigation Monitoring Summary Excel Tables for the City and County of Los Angeles noting any conditions and/or mitigation measures that need further review, and documented these areas in an appendix for that site visit date. Any issues that required immediate attention were reported to Republic staff and the appropriate staff at the City of Los Angeles Planning Department, the County of Los Angeles Department of Regional Planning, the County of Los Angeles Department of Public Works and the Sunshine Canyon Landfill Local Enforcement Agency (SCL-LEA).

The Sunshine Canyon Landfill City and County Summary Tables record each site visit and frequency of monitoring of specific conditions and/or mitigation measures, by date. When a condition and/or mitigation measure is monitored, a check mark is made under the date that it was monitored, and the status of being compliant with the conditions and/or mitigation measures' requirements observed during monitoring is recorded. Tasks with a yearly or non-ongoing monitoring frequency are denoted by a forward slash (/) in subsequent date columns. In the status column, the letter "C" is put next to the task if it is Compliant; the letters "NC" are noted if the task status is Non-Compliant; and the letters "FRN" are used if Further Review is Needed for meeting the requirements of the conditions and/or mitigation measures.

Under the Further Review Needed/ Comment column, observed conditions that have been noted as "FRN" in the status column refer to appendices which detail what was observed during the site monitoring. When the conditions and/or mitigation measures that were previously noted as "FRN" are fully compliant, an "R" is placed in the Resolved column and a "C" replaces the "FRN" in the status column. Also noted in the FRN-Comment column are those action items that would improve monitoring efficiency by having reports and documents readily available. These are summarized in the Compliant with Comments section of the monthly monitoring records and the Summary of Requested Documents of the Quarterly Reports. The City and County Excel Spreadsheets record the site conditions observed during monitoring.

This Quarterly Report provides the City of Los Angeles Department of Planning and the County of Los Angeles Department of Regional Planning with a concise status of the Mitigation Measure Monitoring for the period of July 1, 2014 to September 30, 2014. It includes:

1. The City and County Mitigation Monitoring Summary Excel Tables for September 2014. These tables record the areas of monitoring completed during the third quarter of 2014 and the status of being compliant;
2. A Status Summary of Non-Compliant, Further Review Needed and Compliant with the requirements of the conditions and/or mitigation measures;
3. Photo Location Map and Relevant Site Photos showing site conditions of key areas of the landfill during the quarter;
4. Site visit attendees by date of site visit and the mitigation monitoring report for each monitor;

5. Meeting logs documenting any meetings with Republic Services staff and/or public agencies and the topics discussed; and
6. Any site monitoring documenting site changes.

Site Visits During the Quarter

Four site visits were performed by UltraSystems during the July through September 2014 quarter in order to observe operational site activities and determine compliant status with conditions and/or mitigation measures. They were performed on July 22, 2014; August 14, 2014; August 27, 2014; and September 23, 2014. The previously discussed conditions and/or mitigation measures were tracked by each specialist who visited, and observations were documented. Site conditions were noted to be: Compliant, Non-Compliant, or Further Review Needed. If a Condition was found to be Non-Compliant or observed as having Further Review Needed, a reference was made to an appendix which details what was observed by the monitor.

Definition of Terms

Compliant is defined as complying with the City and County conditions and/or mitigation measures.

Non-compliant is defined as not complying with the City and County conditions and/or mitigation measures.

Further Review Needed is defined as implementing plans (agency-approved, if required) to fully comply with a condition and/or mitigation measure. Some plans, especially vegetation, require an extended time frame, and immediate compliance is not possible.

Further Review Needed/ Comments is defined as comments documenting site conditions observed during monitoring visits that are not fully compliant but action is being taken in order to obtain full compliance with conditions and/or mitigation measures. Recommendations from the monitor, as appropriate, and status from Republic Services (Republic) may also be given. Comments are also made for compliant conditions where the comment notes action that may be taken to provide documents to improve monitoring efficiency and/or document issues observed during the monitoring.

Resolved is defined as action taken or activities completed to fully comply with conditions and/or mitigation measures.

Status Summary

This section summarizes the conditions and/or mitigation measures that were monitored during the quarterly reporting period and their respective statuses. The Sunshine Canyon Mitigation Monitoring Spreadsheets for the City and County show the conditions and/or mitigation measures monitored during the quarter. Also included in this report are relevant photos in Appendix II.

Compliant

The majority of the conditions and/or mitigation measures monitored were observed to be compliant. There are City and County conditions which are compliant, but are noted as

having corresponding comments that refer to the appendices. The Compliant with Comments section of the monthly monitoring records provide a summary of these comments where monitoring efficiency would be improved by having reports and documents readily available and/or document issues observed during monitoring. These are summarized in the Summary of Requested Documents in the Quarterly Report.

Non-Compliant

During UltraSystems' four site visits, no Non-Compliant conditions and/or mitigation measures were noted. Also, it must be understood that any monitoring related to landfill gas and odors are not part of the UltraSystems Monitoring Program at this time. These issues are currently being handled by a multi-agency team, which is led by the South Coast Air Quality Management District (SCAQMD).

Further Review Needed

The following conditions and/or mitigation measures were found not to be fully compliant, but were being worked on in order to obtain full compliance. This section summarizes the progress being made toward being fully compliant. When a condition and/or mitigation measure progresses from FRN to fully compliant, it is noted as Resolved in this section.

Q-B.2.c (City)

Ancillary Uses and Facilities. The subject property may only be used for the following uses and facilities. These ancillary uses and facilities described in the July 1997 Draft Subsequent EIR, pages 2-38 through 2-43, and may be located on the applicant's property generally in conformance with the diagram attached as Exhibit e-4, and during the life of the landfill, may be moved or relocated following commencement of landfiling operations as necessary to accommodate development of the ultimate landfill footprint.

Biota-4.29 (County)

San Diego Horned Lizard: Impact on the San Diego horned lizard can be mitigated to a level of less than significant by restoring coastal sage scrub habitat. This will create a temporal loss of the species, but the population should recover following restoration of this habitat. Topsoils should be selected that are friable to suit lizard habitat requirements.

Biota-4.30 (County)

California Gnatcatcher: Surveys shall be conducted for California gnatcatchers prior to Game Permit onsite grading to determine the status of this Game species within development areas.

Biota-4.33 (County)

Migratory Bird Treaty Act: To prevent the loss of an active migratory bird nest, vegetation shall not be cleared during the breeding season (i.e. March 15 to August 1).

Biota-4.34 (County)

Raptor nests: If habitat removal is proposed during the raptor breeding season (i.e. March to July), a survey shall be conducted for active nesting areas.

Current Status/Comments – The access road realignment project has been stopped and the current contractor is being replaced. The project is being delayed until Spring 2015. Prior to resuming grading activity that includes habitat removal, surveys should be conducted to assess the

presence of migratory birds, California gnatcatcher, raptors and other birds, and the San Diego Horned Lizard. Any areas not previously surveyed for archeological and paleontological resources should also be surveyed.

Q-B.2.d (City)

Phase III (10 Year Phase Review). Phase III of the Landfill may occur following review by the Director of Planning of the operational history with the assistance of the Technical Advisory Committee, Independent Consultants, and/or Local Enforcement Agency.

Current Status/Comments – The City's 10-year Phase III review shall begin in 2015 and shall be concluded within six months. Any corrective measures deemed necessary by TAC or City review shall be formulated and imposed within the following six-month period. There shall be no interruption of service during the establishment and implementation of any corrective measures.

Q-C.10.c (City)

The operator shall submit, as part of its annual report, an evaluation of the feasibility of beneficial uses of the landfill gas collected at the site such as landfill-gas-to-energy.

Odor/Landfill Gas - 7.07 (County)

The permittee will recover and sell as much gas as is technically and economically feasible to reduce total air quality emissions from the landfill operations. It is expected that the technical and economic feasibility of commercial recovery and sale of landfill gas as a renewable energy resource will occur at levels below 40 MMCFD. The gas collection system will be installed in increments to allow for maximum gas recovery.

Gas - 52 (County)

To the extent technically and economically feasible, the Permittee shall use Landfill gas for energy generation at the Facility or other beneficial uses, rather than flaring, and shall obtain all applicable local, state, and/or federal approvals for any such use. Notwithstanding the forgoing, the Permittee shall be exempt from this Condition No. 52 if, as a 'part of its annual report required by Part X of the IMP, the Permittee determines that any such activity or project is infeasible, which determination shall be subject to the review and approval of the Director of Public Works.

The Permittee shall also install and maintain a landfill gas collection system complying with SCAQMD requirements, which uses best available control technology to control the lateral migration of gases to the satisfaction of the Director of Public Works, County LEA, and SCAQMD. In addition to the other requirements of this Condition No. 52, Landfill gas flares shall be installed below the adjacent interior ridges of the site, unless otherwise required by the SCAQMD, and the flames shall be totally contained within the stacks. Flame arrestors shall be provided to the satisfaction of the County Forester and Fire Warden.

Current Status/Comments – The initial test operations and test electric power sales from the gas-to-energy facility was being performed in late August 2014. All equipment was operating as designed, and commissioning of the facility was successful.

In late September 2014, all five turbine units were operational and the facility was producing 22 MW gross with a net sales of 18.2 MW. This is approximately 95% of optimal electric power production. All pretreatment systems appear to be working as designed. A shutdown was scheduled for October 22 and 23 to confirm the effectiveness of the pretreatment system and condition of the turbines after one month of continuous operation.

M-4.1.1(2) (City)

Areas outside of and above the cut and fill as shown on the conceptual grading plan shall not be graded, except for the development of ancillary facilities or other related improvements. Additional grading may be necessary for slope stability or drainage purposes. Prior to undertaking any grading activities, the Department of Building and Safety shall be notified and approve any additional grading based on engineering studies (in accordance with CCR Title 27) provided by the project proponent and independently evaluated by the Department of Building and Safety.

M-4.1.1(4) (City)

Grading that allows for construction of ancillary facilities outside of the landfill footprint or that has the potential to impact property beyond the boundary of the landfill shall be approved by the Department of Building and Safety.

M-4.1.1(5) (City)

All grading activities shall be in compliance with specific requirements provided in a comprehensive geotechnical report prepared specifically for the proposed project, including provisions for excavation approved by the Department of Building and Safety, City Engineer, City LEA and other Responsible Agencies.

Geology-1.07 (County)

All grading activities shall be in compliance with specific requirements provided in a comprehensive geotechnical report prepared specifically for the proposed Project, including provisions for excavation approved by the County Department of Public Works, the County Local Enforcement Agency (LEA) and other Responsible Agencies.

Current Status/Comments – It was observed that grading activities were being performed outside of the cut and fill footprint of the Landfill for the realignment of the main access road. This activity is consistent with the conditions of approval. However, plans that show any grading outside of the landfill footprint should be provided to and approved by the City of Los Angeles Department of Building and Safety and the County Department of Public Works to ensure appropriate grading and vehicular safety.

M-4.1.1(6) (City)

Revegetation and erosion control procedures on all exposed slopes shall be implemented. The erosion controls to be implemented at the site shall include soil stabilization measures and revegetation in accordance with the approved revegetation plan as approved by the City Building and Safety Department. Interceptor ditches shall be designed to divert storm runoff to a sedimentation basin.

M-4.2.11(23) (City)

Disturbed areas shall be revegetated with an interim ground cover as specified in the proposed revegetation program. Excavation will proceed in a manner to reduce the amount of graded areas at any given time.

M-4.2.12 (City)

Site Erosion

c. A temporary vegetation cover shall be established on all slopes that are to remain inactive for a period longer than 180 days.

Geology-1.13 (County)

Revegetation and erosion control of all exposed slopes will be an ongoing process. The erosion controls to be implemented at the site will include soil stabilization measures and revegetation in accordance with the approved Revegetation Program. The installation of interceptor ditches shall be designed for the diversion of storm runoff to sedimentation basins. Sediment traps will be used at points of runoff concentration along the perimeter of exposed slopes surfaces.

Condition: Approval of drainage plan. Retention of a consulting horticulturalist/Registered Professional Forester and an independent qualified biologist by the permittee for ongoing supervision of revegetation programs. Review and monitoring of planting programs by County Forester.

Geology-1.14 (County)

To prevent soil erosion on the face of the landfill, interim vegetation measures will be taken after placement of the temporary soil layer (even though the area may be disturbed by future filling operations). Vegetative cover will be placed as in the approved Revegetation Program.

Condition: Retention of a consulting horticulturalist/Registered Professional Forester and an independent qualified biologist by the permittee for ongoing supervision of revegetation programs. Review and monitoring of planting programs by County Forester.

Biota – 4.42 (County)

Areas inactive for 180 days or longer will be planted with interim vegetation as approved by County biologist. Records will be kept to track fill areas of the site which are transferred to an inactive status so that appropriate dust control and revegetation measures can be implemented.

Air Quality - 6.02 (County)

Dust Control will also be accomplished through the temporary revegetation of the landfill surface. A temporary revegetation of the landfill surface, and a temporary vegetation cover will be established on all slopes that are to remain inactive for a period longer than 180 days. Specifications of temporary revegetation measures will be provided in the Revegetation Plan submitted to the County biologist for approval, the Closure and Postclosure Maintenance Plans, the Condition Use Permit, and Conditions of Project Approval.

Visual-10.08 (County)

Cover/Revegetation Requirements

The permittee shall comply with the following cover and re-vegetation requirements at the Landfill:

(1). The permittee shall apply a temporary hydroseed vegetation cover on any slope or other Landfill area that is projected to be inactive for a period greater than 180 days, as set forth in the IMP. The permittee shall promptly notify the County LEA and the Department of Public Works of any such slope or area;

Revegetation Requirements

(5) Notwithstanding the foregoing, the permittee shall not be bound by the previous provisions of this Condition No. 44, but instead by the requirements of the County LEA, so long as the Limits of Fill are not exceeded, if in consultation with the Department of Public Works, the County LEA determines that a different re-vegetation design or plan:

(1) would better protect public health and safety;

(2) would enable revegetation of the final slopes at least as well as shown in Exhibit "B" described in subsection D, above; and/or experts, including an independent, qualified bio(3) would be required because the minimum standards adopted by the CIWMB have been amended;

(6) the permittee shall employ an expert or biologist, to satisfy this Condition No. 44. Soil sampling and laboratory analysis shall be conducted in all areas that are required to be re-vegetated before any re-vegetation occurs to identify chemical or physical soil properties that may adversely affect plant growth or establishment. Soil amendments and fertilizer recommendations shall be applied and plant

materials selected, based on the above referenced testing procedures and results. To the extent possible, plant types shall blend with species indigenous to the area, be drought tolerant, and be capable of rapid growth. The selected plants shall not include nonindigenous species that are likely to be invasive of adjacent natural areas.

Biota - Revegetation - 44.A (County)

A. The Permittee shall apply a temporary hydroseed vegetation cover on any slope or other Landfill area that is projected to be inactive for a period greater than 180 days, as set forth in the IMP. The Permittee shall promptly notify the SCL-LEA and the Department of Public Works of any such slope or area.

Revegetation - 44.F/44.F CUP (County)

F. The Permittee shall employ an expert or experts, including an independent, qualified biologist, to satisfy this Condition No. 44. Soil sampling and laboratory analysis shall be conducted in all areas that are required to be re-vegetated before any re-vegetation occurs to identify chemical or physical soil properties that may adversely affect plant growth or establishment. Soil amendments and fertilizer recommendations shall be applied and plant materials selected, based on the above-referenced testing procedures and results. To the extent possible, plant types shall blend with species indigenous to the area, be drought tolerant, and be capable of rapid growth. The selected plants shall not include non-indigenous species that are likely to be invasive of adjacent natural areas.

Current Status/Comments – The hydroseeding of interim or inactive slopes were complete in June 2014. Approximately 30 acres of the areas that were hydroseeded included the County's south facing slopes as well as some of the City's north and south facing slopes (see Appendix II, Photographs 361 through 378). Due to the lack of rain and no irrigation, the hydroseeding did not germinate. The use of treated gray water or other recycled water should be investigated.

M-4.2.13/29, 30, 32, 33, 34 (City)

The natural biological processes that generate odors in a landfill through anaerobic decomposition cannot be prevented or avoided. However, the LFGs shall be prevented from escaping to the atmosphere through the use of control measures. These measures include using daily and intermediate cover material over deposited wastes, filling any surface cracks with clean dirt as necessary, and extracting LFG through the use of an LFG collection and recovery system and destroying collected gases by combustion.

Operational techniques shall be utilized to control odor sources at the landfill. The size of the working face shall be limited so that the area of waste exposed to the atmosphere is kept to a minimum.

The LFG collection and recovery system shall be installed in phases as each portion of the landfill site is filled. The final system shall contain a network of gas extraction wells, collection system piping, and flaring facilities. Because the LFG generation begins at lower levels of volume and increases during the landfill site life, the gas will be flared initially until sufficient quantities are available for processing into electricity.

If an odor problem should develop, appropriate control measures shall be implemented. These measures include the application of additional dirt daily cover material or more frequent application of the cover material to seal the landfill surface, or adjustments to the wells, equipment, and operation of the LFG collection and recovery system.

To ensure that odors are kept to a minimum, the following odor/LFG monitoring program shall be implemented for the proposed landfill project. The monitoring program shall comply with the requirements of SCAQMD Rule 1150.1 and include:

- a. *Sample Probe Installation: One monitoring probe per 1,000 feet or as identified by South Coast Air Quality Management District (SCAQMD) and/or Local Enforcement Agency (LEA) in the landfill expansion, and one probe per 650 feet or as identified by SCAQMD and/or LEA in the City Inactive landfill along the landfill perimeter, or whichever is more restrictive shall be installed to identify potential areas of subsurface landfill gas (LFG) migration. These probes shall be monitored to ensure that quantities of LFG beyond regulatory standards do not vent offsite through subsurface soils.*
- b. *Integrated Landfill Surface Sampling: The landfill surface shall be monitored to ensure that the average concentration of total organic compounds over the landfill surface does not exceed SCAQMD's standard of 25 ppm.*
- c. *Ambient Air Samples: 24-hour integrated gas samples and required meteorological data shall be taken to assess any impact the landfill is having on the ambient air quality at the landfill perimeter.*
- d. *Instantaneous Landfill Surface Monitoring: Spot checks on the landfill surface shall be made to determine the maximum concentration of total organic compounds measured as methane, measured at any one point on the surface of the landfill does not exceed the SCAQMD's standard of 500 ppm.*
- e. *Regular Monitoring and Annual Testing: LFG concentrations at perimeter probes, gas collection system headers, the landfill surface, and in ambient air downwind of the landfill shall be monitored once per month or less frequently (but no less than quarterly) as required by the SCAQMD. The LFG collection system shall be adjusted and improved based on quarterly monitoring data and annual stack testing results.*

Odor/Landfill Gas - 7.06 (County)

If an odor problem should develop, appropriate control measures shall be implemented. These measures include the application of daily cover material or more frequent application of the cover material to seal the landfill surface, or adjustments to the wells, equipment, and operation of the LFG collection and recover system.

Amendment 45.N - 4.a, 4.c, 4.d (County)

Identify and provide status on the measures currently being implemented as required by the AQMD's Order for Abatement.

An odor patrol program, which would include the following at a minimum:

- *Provide a trained technician to conduct odor patrols in the surrounding neighborhoods at a frequency of one patrol per hour from 6 a.m. to 10 a.m., Monday through Saturday, and during adverse wind conditions.*
- *If odor is detected, identify its potential and/or actual source, including those that may not be related to the Landfill's operation, such as an odorous trash dumpster or transfer trucks.*
- *If odor is determined to be related to the Landfill's operation, take immediate action to reduce the odor. Document the streets patrolled on a map, time of the patrol, potential source of odor, and immediate actions taken by the Landfill.*
- *A landfill gas mitigation plan in preparation for the next rainy season since landfill gas emissions from either the landfill surface or landfill gas control equipment is cited as a potential contributor in the AQMD's Order for Abatement. The plan should include the following at a minimum:*
 - *Description of the site's current Gas Monitoring and Control Plan, including a map showing locations of gas monitoring probes, gas extraction wells, horizontal and vertical gas collection lines, etc.*
 - *Compliance history of the site's landfill gas migration control program from January 1, 2009, to the present quarter as well as any corrective actions.*
 - *Discuss the impacts of the most recent heavy rains on the landfill gas collection system, including identifying locations of damage due to soil erosion, as well as any corrective actions or mitigation measures.*

- *A work plan that includes preventive measures, such as identifying and filling any surface cracks and installing additional extraction wells, as well as contingency measures.*
- *An implementation schedule for the above work plan.*

Amendment 45.N - 5 (County)

Include in the Quarterly Dust and Odor Reports, which are required by CUP Condition No. 45.N, the status and effectiveness of mitigation measures 1 through 3 above, and the Odor Mitigation Plan.

Current Status/Comments – Compliance with these mitigation measures, concerning landfill gas monitoring and odor control and detection, is being monitored by a multi-agency team led by the SCAQMD. Only obvious gas emission sources, lack of cover, or exposed trash resulting in odor and gas emissions observed during the monitoring visit will be reported.

During the August 27, 2014 site monitoring there were strong localized odors noticed around the condensate treatment plant. While walking around the facility, methane levels of 200-1500 ppm were measured using a handheld RKI GX 2002 gas meter. Odors were not detected once we left the condensate facility. Republic staff was notified of the odors and gas levels detected.

M-4.3.1(36) (City)

To ensure that infiltration of surface water into the closed landfill cells is minimized, surface runoff shall be intercepted and diverted around the landfill. The method of diversion used at the project site shall include the use of lined interceptor ditches placed along the edges of the landfill areas. This system of ditches shall flow into monitored sedimentation basins. After sediment content has been reduced, surface waters shall flow into the existing flood control channel directly east of the project site entrance.

Surface Water - 2.03 (County)

As development of the site proceeds, surface drainage control facilities will be maintained so that surface water runoff is diverted from the working faces and isolated from contact with the waste. Onsite drainage control channels will be designed per CCR, Title 23, Division 3, Chapter 15, Article 3, § 2546, which mandates the requirements for a capital storm event (100 year, 24-hour precipitation).

Current Status/Comments – It was observed during the August 27, 2014 site monitoring that there is no clear drainage pattern on the landfill top decks and there are numerous low spots where water may pond and infiltrate. A site survey and corrective grading should occur.

M-4.3.1(37) (City)

As development of the site proceeds, surface drainage systems shall be maintained so that surface runoff is diverted away from working slopes and isolated from landfilled refuse. Onsite drainage channels would be designed per CC, Title 23, Division 3, Chapter 15, Article 3, §2533(C), and County of Los Angeles Public Works Department, Flood Control Division requirements.

M-4.3.1(38) (City)

Permanent bench drainage ditches shall be installed when final cover is placed on completed portions of the landfill. These ditches shall be lined. Temporary unlined drainage facilities consisting of diversion ditches (V-ditches) where necessary shall directly intercept natural surface runoff. Any intermittent channel flow in the existing canyon bottom shall be captured, channeled, and conveyed into a sedimentation basin. Diversion ditches shall convey surface runoff from the undisturbed areas to the permanent perimeter ditches for safe transport around the landfill footprint. Surface covers of

various types, from mulches to vegetation, shall be used to retard erosion from areas of disturbance. In addition, areas of disturbance shall be kept at a minimum during active filling operations.

Surface Water - 2.12 (County)

Permanent bench drainage ditches shall be installed when final cover is placed on completed portions of the landfill. These ditches shall be lined. Temporary unlined drainage facilities consisting of diversion ditches (V-ditches) where necessary shall directly intercept natural surface runoff. Any intermittent channel flow in the existing canyon bottom shall be captured, channeled, and conveyed into a sedimentation basin. Diversion ditches shall convey surface runoff from the undisturbed areas to the permanent perimeter ditches for safe transport around the landfill footprint. Surface covers of various types, from mulches to vegetation, shall be used to retard erosion from areas of disturbance. In addition, areas of disturbance shall be kept at a minimum during active filling operations.

Current Status/Comments – During the September 23, 2014 site monitoring, it was observed that temporary and permanent drainage ditches have been installed to convey water to the basins. The majority of inactive and/or areas that have been disturbed have no temporary or permanent vegetation to retard erosion. The use and potential sources of gray water for vegetation irrigation should be investigated.

The V-ditch near the front entrance has numerous pipes in the ditch impacting flow capacity. The oil field road repaving reduced the height of a berm that now does not divert runoff as it should. These areas of drainage difficulties should be corrected.

M-4.3.1(40) (City)

In order to monitor the effectiveness of those measures designed to prevent pollution from entering the offsite stormwater system, the project proponent shall be required to apply for coverage under the SWRCB's General Construction Activities Stormwater Permit Programs.

M-4.3.1(45) (City)

An erosion control plan would be implemented by the project proponent to prevent stormwater pollution from construction activity. Construction materials, equipment and vehicles would be stored or parked in areas protected from stormwater runoff. Construction material loading and unloading would be in designated areas to minimize any washout due to stormwater runoff. Pre-construction controls would be implemented to include the use of a sandbagging system, including sandbag check dams and sandbag desilting basins, which would be used to limit runoff velocities and minimize sediment in storm water runoff.

Surface Water 2.14 (County)

An erosion control plan would be implemented by the project proponent to prevent stormwater pollution from construction activity. Construction materials, equipment and vehicles would be stored or parked in areas protected from stormwater runoff. Construction material loading and unloading would be in designated areas to minimize any washout due to stormwater runoff. Pre-construction controls would be implemented to include the use of a sandbagging system, including sandbag check dams and sandbag desilting basins, which would be used to limit runoff velocities and minimize sediment in storm water runoff.

Current Status/Comments – During the September 23, 2014 site monitoring, it was observed that winterization of the slopes was ongoing. Straw wattles were placed on the upper slopes and lower reaches near the proposed temporary basin. Though we have not been able to review the overall winterization plans, straw wattles may not be enough to control erosion on the steep slopes

extending from the current access road. An erosion control plan should be available on-site for review by the agencies and monitor.

M-4.3.1(46) (City)

A preventive maintenance program would be implemented by the project proponent, including inspection of facility equipment, systems, and stormwater management devices to detect conditions that may cause breakdowns or failures resulting in discharge of materials into stormwater. This program applies to the onsite drainage ditches; rip-rap; berms and dikes; dust control; silt fences; diversion grading; and pavement surfaces. Each system and piece of stationary equipment would be inspected monthly. Procedures for inspection would vary, due to the piece of equipment or system. However, the major elements of the inspection program would include checking for cracks or structural failures, inspecting parts or pieces of equipment nonfunctioning, checking for the degradation or deterioration of operating units, and investigating the need for cleaning or emptying units. A summary report of these monitoring results and the corrective actions taken will be disseminated in each newsletter with a more detailed report on the web site and in the annual report.

Surface Water 2.15 (County)

Surface Water Preventive Maintenance Program

A preventive maintenance program will be implemented by the permittee, including inspection of facility equipment, systems, and stormwater management devices to detect conditions that may cause breakdowns or failures resulting in discharge of materials into stormwater. This program applies to the onsite drainage ditches, rip-rap, berms and dikes, dust control, silt fences, diversion grading, and pavement surfaces. Each system and piece of equipment will be inspected monthly.

Procedures for inspection would vary based on the piece of equipment or system. However, the major elements of the inspection program will include checking for cracks or structural failures, inspecting parts or pieces of equipment nonfunctioning, checking for the degradation or deterioration of operating units, and investigating the need for cleaning or emptying units.

Current Status/Comments – During the January 15, 2014 site monitoring, it was observed that along a portion of the westside drainage channel between Basin A and Basin D, the floor of the basin is uplifted in the middle with large cracks and weeds growing. Cracks mentioned in previous visits on the westside (native soil side) of the channel are getting worse, with concrete spalling and pieces falling off.

During the September 23, 2014 site monitoring, it was observed that the floor of the channel uplifted more and portions of the concrete walls spalling increased. There appears to be no sign of eminent failure. However, maintenance should be scheduled.

M-4.4.1(60) (City)

Venturan Coastal Sage Scrub

A detailed conceptual mitigation plan shall be prepared by the project proponent and contain specific information on planting, maintenance, and monitoring. A revegetation plan that includes Coastal sage scrub restoration can feasibly occur onsite. The implementation of this plan will provide onsite mitigation greater than 1:1 to offset the loss of coastal sage scrub.

Biota - 4.27 (County)

Venturan Coastal Sage Scrub: A detailed conceptual mitigation plan shall be prepared by the permittee and shall contain specific information on planting, maintenance, and monitoring. A revegetation plan that includes coastal sage scrub restoration can feasibly occur onsite. The

implementation of this plan will provide onsite mitigation greater than 1:1 to offset the loss of coastal sage scrub.

Current Status/Comments – During the 2nd Quarter site monitoring, the City Deck C sage mitigation area was observed and the salt and quail bush was growing and accounted for approximately 70-80% of the surviving plants. Sage and other plants had spotty success. The County sage area was much greener and appeared more filled-in with vegetative growth due to the February 2014 rains.

During the August 14, 2014 site monitoring, the Deck C sage mitigation was monitored to check on plant growth. The test areas with the highest growth was *Atriplex lentiformis* and *Atriplex canescens*. These species appear to do well with the high saline soils. There is a concern that *Artemisia californica* and *Eriogonum fasciculatum* are the host plant species for the leafhopper insects that serve as the main prey for the California Gnatcatcher. Therefore, the next step would be to populate the barren areas with the host plant species. The *Atriplex* was being selectively pruned to allow *Encelia* to grow through. Irrigation was reduced to mimic the natural rainfall regime. The County sage mitigation area had no revegetation activity occurring and change since the 2nd Quarter 2014.

M-4.4.2/69 (City)

Potential candidate mitigation sites have been identified by the project proponent in conjunction with resource agencies for consideration to compensate for impacts on riparian and wetland resources as a result of project development. These sites include Bull Creek, Bee Canyon and East Canyon, which are located proximate to the project site. Prior to the development of any detailed mitigation plans and drawings, the final selection will be determined cooperatively by the CDFG, Corps, SWRCB, and other regulatory agencies in conjunction with the City and project proponent.

Current Status/Comments – During the August 27, 2014 site monitoring, Republic staff provided an update on the Chatsworth Wetlands and Riparian Mitigation Project. It was stated that there are still City of Los Angeles property transfer issues with the use of the old Chatsworth Reservoir as a site. The United States Army Corps of Engineers had given an extension of time on the implementation of a mitigation program until the end of 2014. It is anticipated that these issues will soon be resolved.

M-4.9.3(109) (City)

On a once-a-week basis, or as needed, the landfill operator shall mobilize cleanup crews to provide litter pickup services within the O'Melveny Park area, along Balboa Boulevard and San Fernando Road, and in other residential areas located in proximity to the landfill, that may be affected by offsite litter migration. On a daily basis, the cleanup crews shall inspect the surrounding area to assess if more frequent cleanups are required. Fences outside of the landfill perimeter may be visible to the surrounding community.

Visual 10.11 (County)

The permittee's onsite Litter Control Program will include continuous patrol of the access road and working face during hours of operations and mobilize clean-up crews on a regular basis for litter pick-up along designated public access routes, O'Melveny Park and the adjacent neighborhood.

Current Status/Comments – On August 27, 2014, illegal dumping of a cabinet was observed on Sierra Highway north of the I-14 overpass. The area had no wind-blown litter. On September 23, 2014, the illegally dumped cabinet that was observed on the prior site monitoring visit was still on the side of the road.

M-4.19.1(183) (City)

Prior to the commencement of initial earth excavation, specific sections of the project area shall be resurveyed as a precautionary measure to minimize potential loss of undiscovered archaeological resources. Specific areas within the project site to be resurveyed shall be determined by the intended cut-and-fill areas proposed for landfill development. As new areas for excavation are identified, an evaluation of those areas shall be made based on the prior survey results and consultation with appropriate technical specialists. Factors to be considered for delineation of areas to be resurveyed will be known site selection factors associated with aboriginal groups suspected of having inhabited the general area. These factors include proximity to water, the type of vegetation (e.g., food source, shelter, and fuel), and the topography (e.g., slope and aspect).

Ecological Significance 62 (County)

The Permittee shall develop and implement a program to identify and conserve all significant archaeological and paleontological materials found onsite pursuant to Part VII of the IMP. If the Permittee finds any evidence of aboriginal habitation or fossils during earthmoving activities, Landfill operations shall immediately cease in that immediate area, and the evidence and area shall be preserved until a qualified archaeologist or paleontologist, as appropriate, makes a determination as to the significance of the evidence. If the determination indicates that the archaeological or paleontological resources are significant, the resources shall be recovered to the extent practicable prior to resuming Landfill operations in that immediate area of the Landfill.

Current Status/Comments – During the 3rd Quarter 2014, the monitor observed that Archaeological surveys were performed on the area west of the office facilities and an area south of there where site grading was being done. No items of concern were found. Archaeological reports are on file and are available in Republic's offices.

M-4.19.2(187) (City)

Prior to the commencement of initial earth excavation, specific sections of the City/County Landfill Project area shall be resurveyed as a precautionary measure to minimize potential loss of undiscovered paleontological resources. Specific sections of the project area to be resurveyed shall be as determined by the intended cut-and-fill areas proposed for landfill development. As new areas for excavation are identified by the project proponent, an evaluation of those areas shall be made based on the prior survey results and consultation with appropriate technical specialists.

Ecological Significance 62 (County)

The Permittee shall develop and implement a program to identify and conserve all significant archaeological and paleontological materials found onsite pursuant to Part VII of the IMP. If the Permittee finds any evidence of aboriginal habitation or fossils during earthmoving activities, Landfill operations shall immediately cease in that immediate area, and the evidence and area shall be preserved until a qualified archaeologist or paleontologist, as appropriate, makes a determination as to the significance of the evidence. If the determination indicates that the archaeological or paleontological resources are significant, the resources shall be recovered to the extent practicable prior to resuming Landfill operations in that immediate area of the Landfill.

Current Status/Comments – During the 3rd Quarter 2014, the monitor observed that paleontological surveys and field inspections were performed during grading operations of previously undisturbed areas. No items were recoverable except for marine bone fragments. Paleontological reports are on file and are available in Republic's offices.

Summary of Requested Documents

The following documents, reports and plans are recommended to be made available at the site for agency and monitor review in order to assist in streamlining the monitoring process.

- a) Design report for the Leachate Collection and Treatment Facility (LCTF).
- b) Current Fill Sequence Plan.
- c) A plan showing areas inactive for 180 days or longer with records tracking fill areas and interim reclamation and revegetation, including the timing of proposed work, as well as a plan showing current and projected areas to be within ten feet of the limits of fill.
- d) Maps showing areas that are at final elevation and bench ditches that will connect to drainage ditches to protect against natural surface runoff.
- e) The current erosion control plans should be available for agency and monitor review.
- f) Site drainage plans, including surface and underdrains systems with complementing revegetation plan.
- g) A plan/ report of the liner interceptor ditches design/ installation to ensure that surface runoff is appropriately conveyed to the existing flood control channel directly east of the project site entrance.
- h) Comprehensive geotechnical reports.
- i) A preventative maintenance plan and summary of monitoring reports of inspections of facility equipment, systems and stormwater management devices to detect conditions that may cause breakdowns or failures resulting in discharge of materials into stormwater.

Conclusions

In this reporting period, UltraSystems has monitored the conditions and/or mitigation measures for the City/ County, as shown on the Mitigation Monitoring Summary Excel spreadsheets.

As shown by the Non-Compliant and Further Review Needed sections above, the landfill is actively working toward being fully compliant with conditions and/or mitigation measures, with no non-compliant conditions observed. Furthermore, monitoring of the tasks on these Excel spreadsheets tracks progress toward being fully compliant. Notwithstanding the above, air quality issues are not being actively monitored by UltraSystems, and may not be compliant.

The 2014 Third Quarter Mitigation Monitoring Summary Excel spreadsheets track the progress and completion of tasks as they were accomplished during this quarterly period.

Sunshine Canyon Landfill City Mitigation Monitoring Summary

(07-01-2014 through 09-30-2014)

Reference #	Mitigation #	City Mitigation Measures and Conditions Monitored by Discipline	Monitoring Frequency	Third Quarter																		
				7/22/2014	Status*	Further Review Needed/Comments**	Resolved*		Status*	Further Review Needed/Comments**	Resolved*	8/14/2014	Status*	Further Review Needed/Comments**	Resolved*	8/27/2014	Status*	Further Review Needed/Comments**	Resolved*	9/23/2014	Status*	Further Review Needed/Comments**
Project Manager																						
Q - A.3.		Definitions	info	/								/				/				/		
Q - A.6.		Submit Annual Reports	June yearly	/								/				/				/		
Q - A.10.		Provision of Fees	yearly	/								/				/				/		
Q - B.1.		Permitted/Prohibited Landfill Uses	yearly	/								/				/				/		
Q - B.2		Approval of Landfill	ongoing	✓	C	NONE						✓	C	NONE		✓	C	NONE		✓	C	NONE
Q - B.2.c.		Ancillary Uses and Facilities	ongoing	✓	C	I-j						✓	C	NONE		✓	C	NONE		✓	C	NONE
		Ancillary Uses and Facilities																				
Q - B.2.d (3)		10 Year Phase Review	2015	✓	C	I-j						/				/				/		
		10 Year Phase Review																				
Q - B.4.d.		Inert/Exempt Materials	info	/								/				/				/		
Q - B.5.a.		Prohibited Waste	info	/								/				/				/		
Q - B.6.		Waste Diversion	ongoing	✓	C	NONE						✓	C	NONE		✓	C	NONE		✓	C	NONE
Q - C.3.g.		Paved Access Roads	ongoing	✓	C	NONE						✓	C	NONE		✓	C	NONE		✓	C	NONE
Q - C.3.h.		Surfacing of Access Roads	ongoing	✓	C	NONE						✓	C	NONE		✓	C	NONE		✓	C	NONE

* C = Compliant, NC = Non-Compliant, FRN = Further Review Needed, R = Resolved

** See Appendix I for Comments

Checkmark = Condition or mitigation was monitored

/ = Yearly or non-ongoing monitoring frequency

Sunshine Canyon Landfill City Mitigation Monitoring Summary

(07-01-2014 through 09-30-2014)

Reference #	Mitigation #	City Mitigation Measures and Conditions Monitored by Discipline	Monitoring Frequency	Third Quarter																			
				7/22/2014	Status*	Further Review Needed/Comments**	Resolved*		Status*	Further Review Needed/Comments**	Resolved*	8/14/2014	Status*	Further Review Needed/Comments**	Resolved*	8/27/2014	Status*	Further Review Needed/Comments**	Resolved*	9/23/2014	Status*	Further Review Needed/Comments**	Resolved*
Q - C.5.		Graffiti Removal and Deterrence	ongoing	✓	C	NONE						✓	C	NONE		✓	C	NONE		✓	C	NONE	
Q - C.10.c.		Evaluation of Beneficial Gas Usage	June yearly												✓	C	I-I		✓	C	I-m		
Q - C.10.d. (1)		Alternative Fuel Vehicles	status																				
Q - C.10.d. (2)		Alternative Fuel Refuse Collection Trucks	status																				
Q - C.12.a.		Technical Advisory Committee	info	/								/				/				/			
Q - C.12.c.		Contract for Mitigation Monitoring	info	/								/				/				/			
Q - C.12.c.		Contract for Mitigation Monitoring-5 years	info	/								/				/				/			
T - 4		Fire Plan	status																				
T - 5.j.		Trip Diversion	status	✓	C	NONE						✓	C	NONE		✓	C	NONE		✓	C	NONE	
T - 6		Satisfactory Street Lighting	status	c								/				/				/			
M - 4.1.1	7	Reabandonment Procedures	status	✓	C	NONE						✓	C	NONE		✓	C	NONE		✓	C	NONE	
M - 4.1.4	11	Post-5.0 Earthquake Analysis	upon event	/	NA	NONE						/	NA	NONE		/	NA	NONE		/	NA	NONE	
M - 4.2.12	27	Heavy Equipment Operations	ongoing	✓	C	NONE						✓	C	NONE		✓	C	NONE		✓	C	NONE	
M - 4.2.12		Heavy Equipment Operations	ongoing	✓	C	NONE						✓	C	NONE		✓	C	NONE		✓	C	NONE	
M - 4.2.12	28	Site Erosion-Cover	ongoing	✓	C	NONE						✓	C	NONE		✓	C	NONE		✓	C	NONE	

* C = Compliant, NC = Non-Compliant, FRN = Further Review Needed, R = Resolved

** See Appendix I for Comments

Checkmark = Condition or mitigation was monitored

/ = Yearly or non-ongoing monitoring frequency

Sunshine Canyon Landfill City Mitigation Monitoring Summary

(07-01-2014 through 09-30-2014)

Reference #	Mitigation #	City Mitigation Measures and Conditions Monitored by Discipline	Monitoring Frequency	Third Quarter																			
				7/22/2014	Status*	Further Review Needed/Comments**	Resolved*		Status*	Further Review Needed/Comments**	Resolved*	8/14/2014	Status*	Further Review Needed/Comments**	Resolved*	8/27/2014	Status*	Further Review Needed/Comments**	Resolved*	9/23/2014	Status*	Further Review Needed/Comments**	Resolved*
M - 4.2.12		Site Erosion-Cell Height	ongoing	✓	C	NONE						✓	C	NONE		✓	C	NONE		✓	C	NONE	
M - 4.2.12		Site Erosion-Sealant	ongoing	✓	C	NONE						✓	C	NONE		✓	C	NONE		✓	C	NONE	
M - 4.2.13	29	LFG Control Measures	ongoing	/		I-j						/		I-k		/		I-l		/		I-m	
M - 4.2.13	30	Operational Odor Control Techniques	ongoing	✓	C	NONE						✓	C	NONE		✓	C	NONE		✓	C	NONE	
M - 4.2.13	31	Solid Waste Compaction	ongoing	✓	C	NONE						✓	C	NONE		✓	C	NONE		✓	C	NONE	
M - 4.2.13	32	LFG Collection and Recovery System	ongoing	/		I-j						/		I-k		/		I-l		/		I-m	
M - 4.2.13	33	Odor Control Measures	ongoing	/		I-j						/		I-k		✓	FRN	I-l		/		I-m	
M - 4.2.13	34	Odor/LFG Monitoring	ongoing	/		I-j						/		I-k		/		I-l		/		I-m	
		Periodic LFG Monitoring		/		I-j						/		I-k		/		I-l		/		I-m	
M - 4.3.2	52	LFG Migration Mitigation	ongoing	/	NA	NONE						/	NA	NONE		/	NA	NONE		/	NA	NONE	
M - 4.3.2	57	Dust Control Water	ongoing	✓	C	NONE						✓	C	NONE		✓	C	NONE		✓	C	NONE	
M - 4.4.2	69	Offsite Mitigation Sites	status													✓	FRN	I-l					
M - 4.4.2	70	Purchasing Wetland Credit	status	/								/				/				/			
M - 4.4.2	71	Funding-Invasive Species Eradication Program	status	/								/				/				/			
M - 4.6	85	Site Lighting	status	✓	C	NONE						✓	C	NONE		✓	C	NONE		✓	C	NONE	
M - 4.7.1	86	Open Space Buffer Area	ongoing	✓	C	NONE						✓	C	NONE		✓	C	NONE		✓	C	NONE	
M - 4.9.3	106	Litter Minimization	ongoing	✓	C	NONE						✓	C	NONE		✓	C	NONE		✓	C	NONE	

* C = Compliant, NC = Non-Compliant, FRN = Further Review Needed, R = Resolved

** See Appendix I for Comments

Checkmark = Condition or mitigation was monitored

/ = Yearly or non-ongoing monitoring frequency

Sunshine Canyon Landfill City Mitigation Monitoring Summary

(07-01-2014 through 09-30-2014)

Reference #	Mitigation #	City Mitigation Measures and Conditions Monitored by Discipline	Monitoring Frequency	Third Quarter																			
				7/22/2014	Status*	Further Review Needed/Comments**	Resolved*		Status*	Further Review Needed/Comments**	Resolved*	8/14/2014	Status*	Further Review Needed/Comments**	Resolved*	8/27/2014	Status*	Further Review Needed/Comments**	Resolved*	9/23/2014	Status*	Further Review Needed/Comments**	Resolved*
M - 4.9.3	107	Litter/Debris Containment	ongoing	✓	C	NONE						✓	C	NONE		✓	C	NONE		✓	C	NONE	
M - 4.9.3	108	Vehicle Tarping Requirements	ongoing	✓	C	NONE						✓	C	NONE		✓	C	NONE		✓	C	NONE	
M - 4.9.3	109	Periodic Offsite Litter Pickup	ongoing																				
M - 4.9.3	110	Illegal Dumping Activities	ongoing													✓	FRN	I-I		✓	FRN	I-m	
M - 4.9.3	111	Radio Dispatch Litter Control	ongoing	✓	C	NONE						✓	C	NONE		✓	C	NONE		✓	C	NONE	
M - 4.9.3	112	Litter Control	ongoing	✓	C	NONE						✓	C	NONE		✓	C	NONE		✓	C	NONE	
M - 4.9.5	127	Address Concerns of Citizens' Advisory Committee	ongoing	/								/				/				/			
M - 4.9.6	128	Landfill Gas/Collection System-Unsafe Methane Levels	ongoing	✓	C	NONE						✓	C	NONE		✓	C	NONE		✓	C	NONE	
M - 4.9.6	129	Landfill Gas/Collection System-Detection/Training	ongoing	✓	C	NONE						✓	C	NONE		✓	C	NONE		✓	C	NONE	
M - 4.9.6	130	Landfill Gas/Collection System-Risk Mitigation	ongoing	✓	C	NONE						✓	C	NONE		✓	C	NONE		✓	C	NONE	
M - 4.16.4	176	Reclaimed Water	status	/								/				/				/			
M - 4.16.4	177	Water Conservation	ongoing	✓	C	NONE						✓	C	NONE		✓	C	NONE		✓	C	NONE	
Civil & Geotechnical Engineer																							
M - 4.1.1	2	Grading Outside of Conceptual Grading Plan Area	ongoing																	✓	FRN	I-m	

* C = Compliant, NC = Non-Compliant, FRN = Further Review Needed, R = Resolved

** See Appendix I for Comments

Checkmark = Condition or mitigation was monitored

/ = Yearly or non-ongoing monitoring frequency

Sunshine Canyon Landfill City Mitigation Monitoring Summary

(07-01-2014 through 09-30-2014)

Reference #	Mitigation #	City Mitigation Measures and Conditions Monitored by Discipline	Monitoring Frequency	Third Quarter																		
				7/22/2014	Status*	Further Review Needed/Comments**	Resolved*		Status*	Further Review Needed/Comments**	Resolved*	8/14/2014	Status*	Further Review Needed/Comments**	Resolved*	8/27/2014	Status*	Further Review Needed/Comments**	Resolved*	9/23/2014	Status*	Further Review Needed/Comments**
M - 4.1.1	3	Unsuitable Material Removal/Buffer Zones	ongoing																			
M - 4.1.1	4	Grading Outside of Landfill Footprint	ongoing																✓	FRN	I-m	
M - 4.1.1	5	Grading Activity Compliance	ongoing																✓	FRN	I-m	
M - 4.1.2	8	Landslide Guidelines	ongoing																			
M - 4.1.2	9	Soil Stabilization	ongoing																			
M - 4.1.4	10	Landfill Design	ongoing																			
M - 4.1.4	11	Earthquake Operations Checklist	upon event	/	NA	NONE						/	NA	NONE		/	NA	NONE		/	NA	NONE
M - 4.1.5	12	Geologic Hazards - Liquefaction	ongoing																			
M - 4.1.5	13	Design/Construction-Liquefaction	ongoing																			
M - 4.1.5	14	Design/Construction-Containment Structures	ongoing																			
M - 4.1.6	15	Refuse Slope Gradients	ongoing	✓	C	NONE						✓	C	NONE		✓	C	NONE		✓	C	NONE
M - 4.1.6	16	Cut and Fill Slope Gradients	ongoing	✓	C	NONE						✓	C	NONE		✓	C	NONE		✓	C	NONE
M - 4.1.6	17	Final Slope Factors of Safety	ongoing																			
M - 4.1.6	18	Survey Monuments	ongoing																			
M - 4.3.2	47	Landfill Liner	ongoing																			
M - 4.3.2	48	Landfill Liner	ongoing																			
M - 4.3.2	54	Preliminary Closure/Postclosure Plan	status																			

* C = Compliant, NC = Non-Compliant, FRN = Further Review Needed, R = Resolved

** See Appendix I for Comments

Checkmark = Condition or mitigation was monitored

/ = Yearly or non-ongoing monitoring frequency

Sunshine Canyon Landfill City Mitigation Monitoring Summary

(07-01-2014 through 09-30-2014)

Reference #	Mitigation #	City Mitigation Measures and Conditions Monitored by Discipline	Monitoring Frequency	Third Quarter																		
				7/22/2014	Status*	Further Review Needed/Comments**	Resolved*		Status*	Further Review Needed/Comments**	Resolved*	8/14/2014	Status*	Further Review Needed/Comments**	Resolved*	8/27/2014	Status*	Further Review Needed/Comments**	Resolved*	9/23/2014	Status*	Further Review Needed/Comments**
M - 4.3.2	55	Landfill Design/Operation/Final	status																			
M - 4.3.2	56	Cover Application	ongoing	✓	C	NONE						✓	C	NONE		✓	C	NONE		✓	C	NONE
M - 4.14.1	155	Access Roadway Grade	ongoing																			
M - 4.18	178	Landfill Elevation Exceedance	ongoing	✓	C	NONE						✓	C	NONE		✓	C	NONE		✓	C	NONE
Hydrologist																						
M - 4.1.4	11	Earthquake Operations Checklist	upon event	/	NA	NONE						/	NA	NONE		/	NA	NONE		/	NA	NONE
M - 4.3.1	36	Surface Water Infiltration Minimization	ongoing																✓	FRN	I-m	
M - 4.3.1	37	Surface Drainage Systems	ongoing																✓	FRN	I-m	
M - 4.3.1	38	Permanent/Temporary Ditches	ongoing																✓	FRN	I-m	
M - 4.3.1	39	Drainage Protection	ongoing																			
M - 4.3.1	40	SWRCB Permit Coverage	ongoing																✓	FRN	I-m	
M - 4.3.1	41	Surface Water Collection System	ongoing																			
M - 4.3.1	42	Surface Water Quality Monitoring	ongoing																			
M - 4.3.1	43	Sediment Basin Maintenance	ongoing																			
M - 4.3.1	44	Final Landfill Cover	ongoing																✓	C	NONE	

* C = Compliant, NC = Non-Compliant, FRN = Further Review Needed, R = Resolved

** See Appendix I for Comments

Checkmark = Condition or mitigation was monitored

/ = Yearly or non-ongoing monitoring frequency

Sunshine Canyon Landfill City Mitigation Monitoring Summary

(07-01-2014 through 09-30-2014)

Reference #	Mitigation #	City Mitigation Measures and Conditions Monitored by Discipline	Monitoring Frequency	Third Quarter																			
				7/22/2014	Status*	Further Review Needed/Comments**	Resolved*		Status*	Further Review Needed/Comments**	Resolved*	8/14/2014	Status*	Further Review Needed/Comments**	Resolved*	8/27/2014	Status*	Further Review Needed/Comments**	Resolved*	9/23/2014	Status*	Further Review Needed/Comments**	Resolved*
M - 4.3.1	45	Erosion Control Plan	ongoing																✓	FRN	I-m		
M - 4.3.1	46	Preventive Maintenance Program	ongoing																✓	FRN	I-m		
M - 4.3.2	49	Interception of Groundwater Seepage	ongoing																				
M - 4.3.2	50	LCRS/Leachate Monitoring	ongoing																				
M - 4.3.2	51	LCRS Monitoring	ongoing																				
Biologist																							
M - 4.1.1	6	Slope Erosion Control	ongoing	✓	C	I-j						✓	C	I-k		✓	C	I-l		✓	C	I-m	
M - 4.2.11	23	Revegetation/Excavation	ongoing	✓	C	I-j						✓	C	I-k		✓	C	I-l		✓	C	I-m	
M - 4.2.12		Temporary Vegetation Cover	ongoing	✓	C	I-j						✓	C	I-k		✓	C	I-l		✓	C	I-m	
M - 4.4.1	60	Coastal Sage Scrub Mitigation Plan	ongoing									✓	C	I-k									
M - 4.4.1	61	Coastal Sage Scrub Seeding	ongoing																				
M - 4.4.1	62	Mariposa Lily Mitigation Plan	ongoing	/								/				/				/			
M - 4.4.1	63	San Diego Horned Lizard Mitigation	ongoing	/								/				/				/			
M - 4.4.1	64	California Gnatcatcher Surveys	ongoing	/								/				/				/			
M - 4.4.1	65	Least Bell's Vireo Surveys	ongoing	/								/				/				/			

* C = Compliant, NC = Non-Compliant, FRN = Further Review Needed, R = Resolved

** See Appendix I for Comments

Checkmark = Condition or mitigation was monitored

/ = Yearly or non-ongoing monitoring frequency

Sunshine Canyon Landfill City Mitigation Monitoring Summary (07-01-2014 through 09-30-2014)

Reference #	Mitigation #	City Mitigation Measures and Conditions Monitored by Discipline	Monitoring Frequency	Third Quarter																			
				7/22/2014	Status*	Further Review Needed/Comments**	Resolved*			Status*	Further Review Needed/Comments**	Resolved*	8/14/2014	Status*	Further Review Needed/Comments**	Resolved*	8/27/2014	Status*	Further Review Needed/Comments**	Resolved*	9/23/2014	Status*	Further Review Needed/Comments**
M - 4.4.1	66	Western Burrowing Owl Surveys	ongoing	/								/				/				/			
M - 4.4.1	67	Migratory Bird Treaty Act	ongoing	/								/				/				/			
M - 4.4.1	68	Raptor Nests Habitat	ongoing	/								/				/				/			
M - 4.4.3	72	Native Tree Mitigation	ongoing	✓	C	NONE						✓	C	NONE		✓	C	NONE		✓	C	NONE	
M - 4.4.3	73	Nonnative Tree Mitigation	status	✓	C	NONE						✓	C	NONE		✓	C	NONE		✓	C	NONE	
M - 4.4.3	74	Mitigation Tree Planting	ongoing	✓	C	NONE						✓	C	NONE		✓	C	NONE		✓	C	NONE	
M - 4.4.3	75	Tree Planting Mitigation Site Prep	ongoing	✓	C	NONE						✓	C	NONE		✓	C	NONE		✓	C	NONE	
M - 4.4.3	76	Poultry Wire Screen	ongoing	✓	C	NONE						✓	C	NONE		✓	C	NONE		✓	C	NONE	
M - 4.4.3	77	Backfill Material	ongoing	✓	C	NONE						✓	C	NONE		✓	C	NONE		✓	C	NONE	
M - 4.4.3	78	Tree Planting Procedure	ongoing	✓	C	NONE						✓	C	NONE		✓	C	NONE		✓	C	NONE	
M - 4.4.3	79	Tree Area Mulching	ongoing	✓	C	NONE						✓	C	NONE		✓	C	NONE		✓	C	NONE	
M - 4.4.3	80	Tree Irrigation/Fertilization	ongoing	✓	C	NONE						✓	C	NONE		✓	C	NONE		✓	C	NONE	
M - 4.4.3	81	Irrigation System	ongoing																				
M - 4.4.3	82	Annual Tree Monitoring Report	annual																				
M - 4.9.2	96	Vector Activity Monitoring	ongoing																				
M - 4.9.2	97	Vector Elimination	ongoing																				
M - 4.9.2	98	Fly Control	ongoing																				

* C = Compliant, NC = Non-Compliant, FRN = Further Review Needed, R = Resolved

** See Appendix I for Comments

Checkmark = Condition or mitigation was monitored

/ = Yearly or non-ongoing monitoring frequency

Sunshine Canyon Landfill City Mitigation Monitoring Summary

(07-01-2014 through 09-30-2014)

Reference #	Mitigation #	City Mitigation Measures and Conditions Monitored by Discipline	Monitoring Frequency	Third Quarter																		
				7/22/2014	Status*	Further Review Needed/Comments**	Resolved*		Status*	Further Review Needed/Comments**	Resolved*	8/14/2014	Status*	Further Review Needed/Comments**	Resolved*	8/27/2014	Status*	Further Review Needed/Comments**	Resolved*	9/23/2014	Status*	Further Review Needed/Comments**
M - 4.9.2	99	Rodent Control	ongoing																			
M - 4.9.2	100	Operational Vector-Limiting Activity	ongoing																			
M - 4.9.2	101	Equipment Cleanliness/Maintenance	ongoing																			
M - 4.9.2	102	Storage of Vector-Attracting Items	ongoing																			
M - 4.9.2	103	Salvaged Material Storage-Vector Control	ongoing	✓	C	NONE						✓	C	NONE		✓	C	NONE		✓	C	NONE
M - 4.9.2	104	Periodic Vector Inspections	ongoing																			
M - 4.9.2	105	Implementation of Vector Control Measures	ongoing																			
Air Quality & Noise Specialist																						
M - 4.2.11	19	Emissions Mitigation Measures	ongoing	✓	C	NONE						✓	C	NONE		✓	C	NONE		✓	C	NONE
M - 4.2.11	19	Construction Curtailing due to Pollution	ongoing	/	NA	NONE						/	NA	NONE		/	NA	NONE		/	NA	NONE
M - 4.2.11	20	Dust Lofting Minimization	ongoing																			
M - 4.2.11	21	Wind Speed Monitoring	ongoing	✓	C	NONE						✓	C	NONE		✓	C	NONE		✓	C	NONE
M - 4.2.11	22	Grading-Dust Reduction	ongoing	✓	C	NONE						✓	C	NONE		✓	C	NONE		✓	C	NONE
M - 4.2.12	24	Construction Equipment Maintenance	ongoing	✓	C	NONE						✓	C	NONE		✓	C	NONE		✓	C	NONE
M - 4.2.12		Construction Curtailing due to Pollution	ongoing																			

* C = Compliant, NC = Non-Compliant, FRN = Further Review Needed, R = Resolved

** See Appendix I for Comments

Checkmark = Condition or mitigation was monitored

/ = Yearly or non-ongoing monitoring frequency

Sunshine Canyon Landfill City Mitigation Monitoring Summary

(07-01-2014 through 09-30-2014)

Reference #	Mitigation #	City Mitigation Measures and Conditions Monitored by Discipline	Monitoring Frequency	Third Quarter																		
				7/22/2014	Status*	Further Review Needed/Comments**	Resolved*		Status*	Further Review Needed/Comments**	Resolved*	8/14/2014	Status*	Further Review Needed/Comments**	Resolved*	8/27/2014	Status*	Further Review Needed/Comments**	Resolved*	9/23/2014	Status*	Further Review Needed/Comments**
M - 4.2.12	25	Refuse Trucks-Maintenance	ongoing																			
M - 4.2.12		Refuse Trucks-Engine	ongoing																			
M - 4.2.12		Refuse Trucks-Fee Schedule	ongoing																			
M - 4.2.12		Refuse Trucks-Fee Schedule Delivery Time	ongoing																			
M - 4.2.12		Refuse Trucks-Idling	ongoing																			
M - 4.2.12		Refuse Trucks-Emissions	ongoing																			
M - 4.2.12	26	Truck Travel and Fugitive Dust Emissions	ongoing																			
M - 4.2.12		Truck Travel and Fugitive Dust Emissions	ongoing																			
M - 4.2.12		Truck Travel and Fugitive Dust Emissions	ongoing																			
M - 4.2.12		Truck Travel and Fugitive Dust Emissions	ongoing																			
M - 4.5.2	83	Landfill Hours	info	/								/				/			/			
M - 4.5.2	84	Landfill Equipment-Noise Reduction	ongoing	✓	C	NONE						✓	C	NONE		✓	C	NONE		✓	C	NONE
Hydrology, Hazardous Waste / Risk of Upset																						
M - 4.3.2	53	Groundwater Monitoring Wells	ongoing																			
M - 4.3.2	58	Operation as Class III Landfill	ongoing																			

* C = Compliant, NC = Non-Compliant, FRN = Further Review Needed, R = Resolved

** See Appendix I for Comments

Checkmark = Condition or mitigation was monitored

/ = Yearly or non-ongoing monitoring frequency

Sunshine Canyon Landfill City Mitigation Monitoring Summary

(07-01-2014 through 09-30-2014)

Reference #	Mitigation #	City Mitigation Measures and Conditions Monitored by Discipline	Monitoring Frequency	Third Quarter																		
				7/22/2014	Status*	Further Review Needed/Comments**	Resolved*		Status*	Further Review Needed/Comments**	Resolved*	8/14/2014	Status*	Further Review Needed/Comments**	Resolved*	8/27/2014	Status*	Further Review Needed/Comments**	Resolved*	9/23/2014	Status*	Further Review Needed/Comments**
M - 4.3.2	59	Underground Fuel Storage	ongoing																			
M - 4.9.1	90	Refuse Inspection Program	ongoing																			
M - 4.9.1	91	Hazardous Waste Load-Checking	status																			
M - 4.9.1	93	Hazardous Waste Detection Training	status																			
M - 4.9.1	94	Spill Response Program	status																			
M - 4.9.4	115	Safety Inspections/Checklists	ongoing																			
M - 4.9.4	118	Accident/Injury reports, Inspections	status																			
M - 4.9.4	121	Fire Prevention Plan	ongoing																			
M - 4.9.4	123	Personal Protective Equipment	ongoing																			
M - 4.9.4	125	Site Access/Fencing	ongoing																			
M - 4.14.1	147	Fire Response Capabilities	ongoing																			
M - 4.14.1	148	Hydrant Installation	ongoing																			
Archaeologist																						
M - 4.19.1	183	Archaeological Resurvey	ongoing																			
M - 4.19.1	184	Onsite Archaeologist	ongoing																			

* C = Compliant, NC = Non-Compliant, FRN = Further Review Needed, R = Resolved

** See Appendix I for Comments

Checkmark = Condition or mitigation was monitored

/ = Yearly or non-ongoing monitoring frequency

Sunshine Canyon Landfill City Mitigation Monitoring Summary (07-01-2014 through 09-30-2014)

Reference #	Mitigation #	City Mitigation Measures and Conditions Monitored by Discipline	Monitoring Frequency	Third Quarter																		
				7/22/2014	Status*	Further Review Needed/Comments**	Resolved*		Status*	Further Review Needed/Comments**	Resolved*	8/14/2014	Status*	Further Review Needed/Comments**	Resolved*	8/27/2014	Status*	Further Review Needed/Comments**	Resolved*	9/23/2014	Status*	Further Review Needed/Comments**
M - 4.19.1	185	Archaeological Resources	ongoing	/	NA	NONE					/	NA	NONE		/	NA	NONE		/	NA	NONE	
M - 4.19.1	186	Archaeological Resources	ongoing	/	NA	NONE					/	NA	NONE		/	NA	NONE		/	NA	NONE	
Paleontologist																						
M - 4.19.2	187	Paleontological Resources Resurvey	ongoing	/	NA	NONE					/	NA	NONE		/	NA	NONE		/	NA	NONE	
M - 4.19.2	188	Paleontological Resources Excavation	ongoing	/	NA	NONE					/	NA	NONE		/	NA	NONE		/	NA	NONE	
M - 4.19.2	189	Paleontological Resources Training	ongoing	✓	C	NONE					✓	C	NONE		✓	C	NONE		✓	C	NONE	
M - 4.19.2	190	Paleontological Resources Recovery	ongoing																			
M - 4.19.2	191	Paleontological Resources Inspection	ongoing	✓	C	I-j					✓	C	I-k		✓	C	I-l		✓	C	I-m	

* C = Compliant, NC = Non-Compliant, FRN = Further Review Needed, R = Resolved

** See Appendix I for Comments

Checkmark = Condition or mitigation was monitored

/ = Yearly or non-ongoing monitoring frequency

Sunshine Canyon Landfill County Mitigation Monitoring Summary

(07-01-2014 through 09-30-2014)

Reference #	Mitigation #	County Mitigation Measures and Conditions Monitored by Discipline	Monitoring Frequency	Third Quarter																			
				7/22/2014	Status*	Further Review Needed/Comments**	Resolved*	8/12/2014	Status*	Further Review Needed/Comments**	Resolved*	8/27/2014	Status*	Further Review Needed/Comments**	Resolved*	9/23/2014	Status*	Further Review Needed/Comments**	Resolved*	10/8/2014	Status*	Further Review Needed/Comments**	Resolved*
Project Manager																							
Amendment 45.N 1	45N	Daily Cover Materials	ongoing	✓	C	NONE		✓	C	NONE		✓	C	NONE		✓	C	NONE		✓	C	NONE	
Amendment 45.N 3	45N	Daily Cover Procedure	ongoing	✓	C	NONE		✓	C	NONE		✓	C	NONE		✓	C	NONE		✓	C	NONE	
Amendment 45.N 4.a	45N	Order for Abatement Status	ongoing	/		I-j		/		I-k		/		I-l		/		I-m		/		I-n	
Amendment 45.N 4.c	45N	Odor Patrol Program	ongoing	/		I-j		/		I-k		/		I-l		/		I-m		/		I-n	
Amendment 45.N 4.d	45N	Landfill Gas Mitigation Plan	ongoing	/		I-j		/		I-k		/		I-l		/		I-m		/		I-n	
Amendment 45.N 5	45N	Dust and Odor Reports	ongoing	/		I-j		/		I-k		/		I-l		/		I-m		/		I-n	
Combined Site & Bridge Area -20.A	20.A	Joint Powers Authority	info	/				/				/				/				/			
Combined Site & Bridge Area -20.F	20.F	Mitigation Reporting and Monitoring Program	status	/				/				/				/				/			
Landfill Capacity - 27	27	Tipping Fees for Partial Loads/Peak Hours	status																				
Grading & Drainage-41.A - .D	41A.D	Water Conservation	status	✓	C	NONE		✓	C	NONE		✓	C	NONE		✓	C	NONE		✓	C	NONE	
Revegetation - 44.F	44.F	Revegetation	status	✓	C	I-j		✓	C	I-k		✓	C	I-l		✓	C	I-m		✓	C	I-n	
Fugitive Dust - 45.B	45.B	Working Face Areas	ongoing	✓	C	NONE		✓	C	NONE		✓	C	NONE		✓	C	NONE		✓	C	NONE	
Fugitive Dust - 45.F	45.F	Inactive Areas Monitoring	ongoing	✓	C	NONE		✓	C	NONE		✓	C	NONE		✓	C	NONE		✓	C	NONE	
Fugitive Dust - 45.I	45.I	Cleaning of Roads	ongoing	✓	C	NONE		✓	C	NONE		✓	C	NONE		✓	C	NONE		✓	C	NONE	
Litter Control - 46.A - .D	46A.D	Litter Control Program	ongoing	✓	C	NONE		✓	C	NONE		✓	C	NONE		✓	C	NONE		✓	C	NONE	
Gas - 52	52	Landfill Gas Collection System	ongoing									✓	C	I-l		✓	C	I-m					
Traffic - 57	57	Traffic Improvements	status	✓	C	NONE		✓	C	NONE		✓	C	NONE		✓	C	NONE		✓	C	NONE	
Traffic - 60	60	Street Light Installation	status	✓	C	NONE		✓	C	NONE		✓	C	NONE		✓	C	NONE		✓	C	NONE	
Traffic - 61	61	Traffic Minimization	ongoing	✓	C	NONE		✓	C	NONE		✓	C	NONE		✓	C	NONE		✓	C	NONE	
Permittee Fees - 64 - 72	64-72	Permittee Fees	info	/				/				/				/				/			

* C = Compliant, NC = Non-Compliant, FRN = Further Review Needed, R = Resolved

** See Appendix I for Comments

Checkmark = Condition or mitigation was monitored

/ = Yearly or non-ongoing monitoring frequency

Sunshine Canyon Landfill County Mitigation Monitoring Summary (07-01-2014 through 09-30-2014)

Reference #	Mitigation #	County Mitigation Measures and Conditions Monitored by Discipline	Monitoring Frequency	Third Quarter																			
				7/22/2014	Status*	Further Review Needed/Comments**	Resolved*	8/12/2014	Status*	Further Review Needed/Comments**	Resolved*	8/27/2014	Status*	Further Review Needed/Comments**	Resolved*	9/23/2014	Status*	Further Review Needed/Comments**	Resolved*	10/8/2014	Status*	Further Review Needed/Comments**	Resolved*
Permittee Fees - 69	69	Permittee Fees-Contributions	info	/				/				/				/				/			
Permittee Fees - 70	70	Permittee Fees	info	/				/				/				/				/			
Permittee Fees - 72	72	Permittee Fees	info	/				/				/				/				/			
Alternative Fuel Vehicles - 77.A	77.A	Alternative Fuel Vehicles-Light Duty	status	✓	C	NONE		✓	C	NONE		✓	C	NONE		✓	C	NONE		✓	C	NONE	
Alternative Fuel Vehicles - 77.B	77.B	Alternative Fuel Vehicles-Refuse/Collection Trucks	status	✓	C	NONE		✓	C	NONE		✓	C	NONE		✓	C	NONE		✓	C	NONE	
Alternative Fuel Vehicles - 77.C	77.C	Alternative Fuel Vehicles-Report	status																				
Alternative Fuel Vehicles - 77.D	77.D	Alternative Fuel Vehicles-heavy-duty, alternative fuel off	status													✓	C	I-m					
Alternative Fuel Vehicles - 77.E	77.E	Alternative Fuel Vehicles-Non-diesel Requirements	status													✓	C	I-m					
Alternative Fuel Vehicles - 77.F	77.F	Alternative Fuel Vehicles-Non-diesel Truck Trip	status																				
Alternative Fuel Vehicles - 77.G	77.G	Alternative Fuel Vehicles-Clean Fuel Demo Program	status																				
Alternative Fuel Vehicles - 77.H	77.H	Alternative Fuel Vehicles-Compliance Evaluation	status																				
Air Quality Monitoring - 81	81	Air Quality Monitoring-Testing	ongoing	/				/				/				/				/			
		Air Quality Monitoring-Testing																					
IMP - Part I..A	IMP 1	Air Quality Monitoring-Testing	ongoing	/				/				/				/				/			
		Air Quality Monitoring-Testing																					
IMP - Part VI	IMP 6	Air Quality Monitoring-Testing	ongoing	/				/				/				/				/			
MMRS-12/01/06		Mitigation Monitoring and Reporting Summary	info	/				/				/				/				/			
		Permits																					
Geology - 1.15		Permittee's On-site Solid Waste Recovery and	status	/				/				/				/				/			
Surface Water - 2.09		SWRCB Permit Coverage	ongoing	/				/				/				/				/			
Surface Water - 2.15		Surface Water Preventive Maintenance Program	ongoing													✓	FRN	I-m					
Groundwater - 3.13		Groundwater-LFG Migration Mitigation	ongoing																				

* C = Compliant, NC = Non-Compliant, FRN = Further Review Needed, R = Resolved

** See Appendix I for Comments

Checkmark = Condition or mitigation was monitored

/ = Yearly or non-ongoing monitoring frequency

Sunshine Canyon Landfill County Mitigation Monitoring Summary

(07-01-2014 through 09-30-2014)

Reference #	Mitigation #	County Mitigation Measures and Conditions Monitored by Discipline	Monitoring Frequency	Third Quarter																			
				7/22/2014	Status*	Further Review Needed/Comments**	Resolved*	8/12/2014	Status*	Further Review Needed/Comments**	Resolved*	8/27/2014	Status*	Further Review Needed/Comments**	Resolved*	9/23/2014	Status*	Further Review Needed/Comments**	Resolved*	10/8/2014	Status*	Further Review Needed/Comments**	Resolved*
Groundwater - 3.14		Groundwater-Monitoring Wells	ongoing																				
BIOTA – 4.05		Annual Fee Submission for SEA Studies	status	/				/				/				/				/			
BIOTA – 4.06		Buffer Zone Maintenance as Nature Preserve	ongoing	✓	C	NONE		✓	C	NONE		✓	C	NONE		✓	C	NONE		✓	C	NONE	
BIOTA – 4.07		Buffer Zone Maintenance-Vegetation	ongoing	✓	C	NONE		✓	C	NONE		✓	C	NONE		✓	C	NONE		✓	C	NONE	
BIOTA – 4.08		Ridgeline Maintenance-Remain Undisturbed	ongoing	✓	C	NONE		✓	C	NONE		✓	C	NONE		✓	C	NONE		✓	C	NONE	
BIOTA – 4.47		Cleaning of Equipment	ongoing																				
BIOTA – 4.48		Monitoring of Vector-Attracting Items	ongoing																				
BIOTA – 4.49		Salvaged Material Storage-Vector Control	ongoing																				
BIOTA – 4.50		Vector Activity Monitoring	ongoing																				
Air Quality - 6.03		Dust Emission Minimization	ongoing																				
Air Quality - 6.04		Usage of Cut Material for Cover	ongoing	✓	C	NONE		✓	C	NONE		✓	C	NONE		✓	C	NONE		✓	C	NONE	
Air Quality - 6.05		Operations in Accordance with SCAQMD/DOPW	info	/				/				/				/				/			
Air Quality - 6.06		Landfill Gas Control/Extraction System/Monitoring	ongoing	/				/				/				/				/			
Air Quality - 6.07		Flaring Systems	info	/				/				/				/				/			
Air Quality - 6.08		Management of Truck Arrivals	ongoing																				
Air Quality - 6.10		Refuse Truck Mitigation	status																				
Air Quality - 6.11		Light Duty Alternative Fuel Vehicles	status	✓	C	NONE		✓	C	NONE		✓	C	NONE		✓	C	NONE		✓	C	NONE	
Air Quality - 6.11		Alternative Fuel Refuse Collection/Transfer Trucks	status																				
Air Quality - 6.11		Alternative Fuel Vehicle Report Submission	status																				
Air Quality - 6.11		Heavy-duty, Alternative Fuel Off-Road Equipment Pilot	status																				
Air Quality - 6.11		Non-Diesel, Alternative Fuel Vehicles-Transfer/Collection	status																				
Air Quality - 6.11		Non-Diesel, Alternative Fuel VehiclesTruck Trips	status																				
Air Quality - 6.11		Clean Fuel Demonstration Program	status																				

* C = Compliant, NC = Non-Compliant, FRN = Further Review Needed, R = Resolved

** See Appendix I for Comments

Checkmark = Condition or mitigation was monitored

/ = Yearly or non-ongoing monitoring frequency

Sunshine Canyon Landfill County Mitigation Monitoring Summary (07-01-2014 through 09-30-2014)

Reference #	Mitigation #	County Mitigation Measures and Conditions Monitored by Discipline	Monitoring Frequency	Third Quarter																			
				7/22/2014	Status*	Further Review Needed/Comments**	Resolved*	8/12/2014	Status*	Further Review Needed/Comments**	Resolved*	8/27/2014	Status*	Further Review Needed/Comments**	Resolved*	9/23/2014	Status*	Further Review Needed/Comments**	Resolved*	10/8/2014	Status*	Further Review Needed/Comments**	Resolved*
Air Quality - 6.11		Compliance Evaluation	status																				
Odor/Landfill Gas – 7.01		Landfill Gas Escape Prevention	ongoing	✓	C	NONE		✓	C	NONE		✓	C	NONE		✓	C	NONE		✓	C	NONE	
Odor/Landfill Gas – 7.02		Landfill Gas Collection System	ongoing	✓	C	NONE		✓	C	NONE		✓	C	NONE		✓	C	NONE		✓	C	NONE	
Odor/Landfill Gas – 7.04		Gas Collection/Flare System Risk Mitigation	ongoing																				
Odor/Landfill Gas – 7.05		Wellhead Awareness	status	✓	C	NONE		✓	C	NONE		✓	C	NONE		✓	C	NONE		✓	C	NONE	
Odor/Landfill Gas – 7.06		Odor Control Measures	ongoing									✓	FRN	I-I					✓	FRN	I-n		
Odor/Landfill Gas – 7.07		Gas Recovery and Sale	status									✓	C	I-I		✓	C	I-m					
Traffic/Circulation – 8.03		Street Light Installation	status	✓	C	NONE		✓	C	NONE		✓	C	NONE		✓	C	NONE		✓	C	NONE	
Traffic/Circulation – 8.04		Truck Traffic Minimization	status																				
Traffic/Circulation – 8.08		Tipping Fees for Partial Loads/Peak Hours	status																				
Traffic/Circulation – 8.10		Nighttime Landfill Operations Feasibility	status	/			/				/				/				/				
Traffic/Circulation – 8.11		Parking Management along San Fernando Road	status	/			/				/				/				/				
Traffic/Circulation – 8.13		Adequate Queuing	status																				
Visual – 10.03		Landfill Flare Locations	status	/			/				/				/				/				
Visual – 10.04		Confinement of Excavation Cover Material	status																				
Visual – 10.05		Lighting Requirements	status																				
Visual – 10.11		Litter Control Program	ongoing																				
Visual – 10.11		Solid Waste Load Procedures-Improperly	ongoing																				
Visual – 10.11		Debris Removal at Entrance	ongoing									✓	FRN	I-I		✓	FRN	I-m					
Visual – 10.11		Litter Control-Fencing	ongoing																				
Visual – 10.11		Periodic Litter Pickup	ongoing									✓	FRN	I-I		✓	FRN	I-m					
Visual – 10.11		Litter Control-Additional Measures	ongoing																				
Visual – 10.12		Discharge Control/Litter Recovery	status																				

* C = Compliant, NC = Non-Compliant, FRN = Further Review Needed, R = Resolved

** See Appendix I for Comments

Checkmark = Condition or mitigation was monitored

/ = Yearly or non-ongoing monitoring frequency

Sunshine Canyon Landfill County Mitigation Monitoring Summary

(07-01-2014 through 09-30-2014)

Reference #	Mitigation #	County Mitigation Measures and Conditions Monitored by Discipline	Monitoring Frequency	Third Quarter																			
				7/22/2014	Status*	Further Review Needed/Comments**	Resolved*	8/12/2014	Status*	Further Review Needed/Comments**	Resolved*	8/27/2014	Status*	Further Review Needed/Comments**	Resolved*	9/23/2014	Status*	Further Review Needed/Comments**	Resolved*	10/8/2014	Status*	Further Review Needed/Comments**	Resolved*
Water Conserv. - 11.01		Water Conservation	ongoing	✓	C	NONE		✓	C	NONE		✓	C	NONE		✓	C	NONE		✓	C	NONE	
Recycling - 14.01		On-site Waste Diversion/Recycling	ongoing	✓	C	NONE		✓	C	NONE		✓	C	NONE		✓	C	NONE		✓	C	NONE	
Recycling - 14.03		Tonnage Disposal Determination	info	/				/				/				/				/			
Recycling - 14.04		Recycling-Various Tasks	info	/				/				/				/				/			
		Clean Dirt Procedures																					
Site - 15.11		Reclaimed Water Utilization	status	/				/				/				/				/			
Site - 15.12		Water Conservation Measures	ongoing	✓	C	NONE		✓	C	NONE		✓	C	NONE		✓	C	NONE		✓	C	NONE	
Admin Rpts/Pgms - 17.4		Operation Compliance	info	/				/				/				/				/			
Admin Rpts/Pgms -17.10		Fill Sequencing Plans	status																				
Admin Rpts/Pgms-17.15		Quarterly Newsletter	status																				
Landfill Operation 18.7		Graffiti Removal/Deterrent Plan	ongoing	✓	C	NONE		✓	C	NONE		✓	C	NONE		✓	C	NONE		✓	C	NONE	
Civil & Geotechnical Engineer																							
Revegetation - 44.C	44.C	Cut Slope Requirements	ongoing	✓	C	NONE		✓	C	NONE		✓	C	NONE		✓	C	NONE		✓	C	NONE	
Geology - 1.01		Survey Monument Locations	ongoing																				
Geology - 1.02		Seismic Design	ongoing													✓	FRN	I-m					
Geology - 1.03		Maximum Refuse Slope Gradients	ongoing																				
Geology - 1.04		Maximum Refuse Slope Gradients	ongoing																				
Geology - 1.05		Unsuitable Material Procedures	ongoing																				
Geology - 1.06		Grading Activities Procedures	ongoing																				
Geology - 1.07		Grading Activities Procedures	ongoing													✓	FRN	I-m					

* C = Compliant, NC = Non-Compliant, FRN = Further Review Needed, R = Resolved

** See Appendix I for Comments

Checkmark = Condition or mitigation was monitored

/ = Yearly or non-ongoing monitoring frequency

Sunshine Canyon Landfill County Mitigation Monitoring Summary

(07-01-2014 through 09-30-2014)

Reference #	Mitigation #	County Mitigation Measures and Conditions Monitored by Discipline	Monitoring Frequency	Third Quarter															
				7/22/2014	Status*	Further Review Needed/Comments**	Resolved*	8/12/2014	Status*	Further Review Needed/Comments**	Resolved*	8/27/2014	Status*	Further Review Needed/Comments**	Resolved*	9/23/2014	Status*	Further Review Needed/Comments**	Resolved*
Geology - 1.09		Outer Perimeter Ridgeline Requirements	info																
Geology - 1.12		Soil Stabilization	ongoing																
Geology - 1.16		Checklists/Surveys Following Earthquake	upon event																
Geology - 1.18		Alluvium-Removal/Replacement	ongoing																
Geology - 1.19		Landfill Design/Construction	ongoing																
Geology - 1.20		Landfill Design/Construction-Foundations	ongoing																
Surface Water - 2.03		Surface Drainage Control Facilities	ongoing																
Surface Water - 2.05		Underdrain Requirements	ongoing																
Surface Water - 2.06		Final Cover for Surface Water Runoff Control	ongoing																
Groundwater - 3.02		Liner System Requirements	ongoing																
Groundwater - 3.04		Onsite Inspector for Liner Installation	ongoing																
Groundwater - 3.09		Alluvium Removal	ongoing																
Visual - 10.01		Landfill Elevations	ongoing																
Visual - 10.02		Final Fill Elevations	ongoing																
Hydrologist																			
Grading & Drainage - 38	38	Installation of Drainage Structures	ongoing																
Geology - 1.17		Landfill Design/Construction-Seismic	ongoing																
Surface Water - 2.01		Surface Water Runoff Interception	ongoing																
Surface Water - 2.02		Surface Water Runoff Collection	ongoing																
Surface Water - 2.03		Surface Drainage Control-Maintenance	ongoing													✓	FRN	I-m	

* C = Compliant, NC = Non-Compliant, FRN = Further Review Needed, R = Resolved

** See Appendix I for Comments

Checkmark = Condition or mitigation was monitored

/ = Yearly or non-ongoing monitoring frequency

Sunshine Canyon Landfill County Mitigation Monitoring Summary

(07-01-2014 through 09-30-2014)

Reference #	Mitigation #	County Mitigation Measures and Conditions Monitored by Discipline	Monitoring Frequency	Third Quarter																			
				7/22/2014	Status*	Further Review Needed/Comments**	Resolved*	8/12/2014	Status*	Further Review Needed/Comments**	Resolved*	8/27/2014	Status*	Further Review Needed/Comments**	Resolved*	9/23/2014	Status*	Further Review Needed/Comments**	Resolved*	10/8/2014	Status*	Further Review Needed/Comments**	Resolved*
Surface Water - 2.04		Sedimentation Basin Capabilities	ongoing																				
Surface Water - 2.05		Underdrain Placement	ongoing																				
Surface Water - 2.07		Drainage Control System Design Approval	ongoing																				
Surface Water - 2.08		Surface Water Runoff-Drainage System	ongoing																				
Surface Water - 2.10		Surface Water Collection System-Monitoring	ongoing																				
Surface Water - 2.11		Surface Water Quality-Collection/Monitoring	ongoing																				
Surface Water - 2.12		Permanent/Temporary Drainage Facilities	ongoing												✓	FRN	I-m						
Surface Water - 2.13		Permanent/Temporary Drainage Facilities	ongoing																				
Surface Water - 2.14		Erosion Control Plan	ongoing												✓	FRN	I-m						
Groundwater - 3.03		Interception of Groundwater Seepage	ongoing																				
Groundwater - 3.06		Monitoring Wells	ongoing																				
Biologist																							
Revegetation - 44	44	Revegetation/Cover Requirements	ongoing																				
Revegetation - 44.A	44.A	Temporary Hydroseed Vegetation	ongoing	✓	C	I-j	✓	C	I-k	✓	C	I-l	✓	C	I-m	✓	C	I-n					
Revegetation - 44.B	44.B	Interim Reclamation/Revegetation	ongoing																				
Revegetation - 44.D	44.D	Final Fill Slope Requirements	ongoing																				
Revegetation - 44.E	44.E		ongoing																				
Geology - 1.13		Drainage Plan Approval	ongoing	✓	C	I-j	✓	C	I-k	✓	C	I-l	✓	C	I-m	✓	C	I-n					
Geology - 1.14		Personnel Retention for Monitoring Soil Erosion	ongoing	✓	C	I-j	✓	C	I-k	✓	C	I-l	✓	C	I-m	✓	C	I-n					
Groundwater - 3.11		Irrigation/Revegetation Management-Personnel	ongoing																				

* C = Compliant, NC = Non-Compliant, FRN = Further Review Needed, R = Resolved

** See Appendix I for Comments

Checkmark = Condition or mitigation was monitored

/ = Yearly or non-ongoing monitoring frequency

Sunshine Canyon Landfill County Mitigation Monitoring Summary

(07-01-2014 through 09-30-2014)

Reference #	Mitigation #	County Mitigation Measures and Conditions Monitored by Discipline	Monitoring Frequency	Third Quarter																			
				7/22/2014	Status*	Further Review Needed/Comments**	Resolved*	8/12/2014	Status*	Further Review Needed/Comments**	Resolved*	8/27/2014	Status*	Further Review Needed/Comments**	Resolved*	9/23/2014	Status*	Further Review Needed/Comments**	Resolved*	10/8/2014	Status*	Further Review Needed/Comments**	Resolved*
BIOTA – 4.10		Oak Tree Permit	ongoing	✓	C	NONE		✓	C	NONE		✓	C	NONE		✓	C	NONE		✓	C	NONE	
BIOTA – 4.11		Oak Tree Mitigation Plan	ongoing	✓	C	NONE		✓	C	NONE		✓	C	NONE		✓	C	NONE		✓	C	NONE	
BIOTA – 4.13		Oak Tree Mitigation Counting	ongoing	✓	C	NONE		✓	C	NONE		✓	C	NONE		✓	C	NONE		✓	C	NONE	
BIOTA – 4.20		Poultry Wire Screen	ongoing	✓	C	NONE		✓	C	NONE		✓	C	NONE		✓	C	NONE		✓	C	NONE	
BIOTA – 4.24		Drip Irrigation	ongoing	✓	C	NONE		✓	C	NONE		✓	C	NONE		✓	C	NONE		✓	C	NONE	
BIOTA – 4.27		Coastal Sage Scrub Mitigation Plan	ongoing					✓	FRN	I-k													
BIOTA – 4.28		Coastal Sage Scrub Seeding	ongoing																				
BIOTA – 4.29		San Diego Horned Lizard Mitigation	ongoing																				
BIOTA – 4.30		California Gnatcatcher Surveys	ongoing	✓	C	NONE		✓	C	NONE		✓	C	NONE		✓	C	NONE		✓	C	NONE	
BIOTA – 4.31		Least Bell's Vireo Surveys	ongoing	✓	C	NONE		✓	C	NONE		✓	C	NONE		✓	C	NONE		✓	C	NONE	
BIOTA – 4.32		Western Burrowing Owl Surveys	ongoing	✓	C	NONE		✓	C	NONE		✓	C	NONE		✓	C	NONE		✓	C	NONE	
BIOTA – 4.33		Migratory Bird Treaty Act	ongoing	✓	C	NONE		✓	C	NONE		✓	C	NONE		✓	C	NONE		✓	C	NONE	
BIOTA – 4.34		Raptor Nests Habitat	ongoing	✓	C	NONE		✓	C	NONE		✓	C	NONE		✓	C	NONE		✓	C	NONE	
BIOTA – 4.36		Personnel Retention for Monitoring Revegetation Plan	ongoing																				
BIOTA – 4.37		Personnel Retention for Monitoring Revegetation Plan	status																				
BIOTA – 4.38		Green Waste Material	ongoing																				
BIOTA – 4.39		Revegetation of Slopes/Fill Areas	ongoing																				
BIOTA – 4.41		Revegetation Plan- Replacement Cover	ongoing																				
BIOTA – 4.42		Interim Vegetation	ongoing	✓	C	I-j		✓	C	I-k		✓	C	I-l		✓	C	I-m		✓	C	I-n	
BIOTA – 4.43		Replacement Riparian Habitat	status																				
Air Quality - 6.02		Dust Control	ongoing	✓	C	I-j		✓	C	I-k		✓	C	I-l		✓	C	I-m		✓	C	I-n	
Visual – 10.06		Upper Ridge Planting/Revegetation	ongoing																				
Visual – 10.07		Tree Planting Around Perimeter	ongoing																				

* C = Compliant, NC = Non-Compliant, FRN = Further Review Needed, R = Resolved

** See Appendix I for Comments

Checkmark = Condition or mitigation was monitored

/ = Yearly or non-ongoing monitoring frequency

Sunshine Canyon Landfill County Mitigation Monitoring Summary

(07-01-2014 through 09-30-2014)

Reference #	Mitigation #	County Mitigation Measures and Conditions Monitored by Discipline	Monitoring Frequency	Third Quarter																			
				7/22/2014	Status*	Further Review Needed/Comments**	Resolved*	8/12/2014	Status*	Further Review Needed/Comments**	Resolved*	8/27/2014	Status*	Further Review Needed/Comments**	Resolved*	9/23/2014	Status*	Further Review Needed/Comments**	Resolved*	10/8/2014	Status*	Further Review Needed/Comments**	Resolved*
Visual – 10.08		Cover/Revegetation Requirements	ongoing																				
Visual – 10.08		Solid Waste Disposal Procedures	ongoing	✓	C	NONE		✓	C	NONE		✓	C	NONE		✓	C	NONE		✓	C	NONE	
Visual – 10.08		Final Cut Slope Steepness	ongoing	✓	C	NONE		✓	C	NONE		✓	C	NONE		✓	C	NONE		✓	C	NONE	
Visual – 10.08		Final Fill Slopes-Reclamation/Revegetation	status																				
Visual – 10.08		Revegetation Requirements	status	✓	C	I-j		✓	C	I-k		✓	C	I-l		✓	C	I-m		✓	C	I-n	
Visual – 10.09		Final Cover Composition Requirements	ongoing																				
Visual – 10.10		Buffer Zone Maintenance	ongoing																				
Water Conservation - 11.02		Plant Species	ongoing																				
Fire Service - 12.01		Brush Clearance Measures	ongoing	✓	C	NONE		✓	C	NONE		✓	C	NONE		✓	C	NONE		✓	C	NONE	
Air Quality & Noise Specialist																							
Fugitive Dust - 45.F	45.F	Fugitive Dust Monitoring	ongoing																				
Fugitive Dust - 45.I	45.I	Paved Roads-Cleaning	ongoing	✓	C	NONE		✓	C	NONE		✓	C	NONE		✓	C	NONE		✓	C	NONE	
Fugitive Dust - 45.N	45.N	Report Submission-Dust/Odor	every quarter																				
Air Quality Monitoring - 81	81	Air Quality Monitoring-Tests	ongoing																				
Air Quality – 6.01		Fugitive Dust Aversion	ongoing	✓	C	NONE		✓	C	NONE		✓	C	NONE		✓	C	NONE		✓	C	NONE	
Air Quality – 6.01		Working Face Requirements	ongoing	✓	C	NONE		✓	C	NONE		✓	C	NONE		✓	C	NONE		✓	C	NONE	
Air Quality – 6.01		Erosion Control-Daily Cover	ongoing	✓	C	NONE		✓	C	NONE		✓	C	NONE		✓	C	NONE		✓	C	NONE	
Air Quality – 6.01		Soil Stockpile Requirements	ongoing	✓	C	NONE		✓	C	NONE		✓	C	NONE		✓	C	NONE		✓	C	NONE	

* C = Compliant, NC = Non-Compliant, FRN = Further Review Needed, R = Resolved

** See Appendix I for Comments

Checkmark = Condition or mitigation was monitored

/ = Yearly or non-ongoing monitoring frequency

Sunshine Canyon Landfill County Mitigation Monitoring Summary

(07-01-2014 through 09-30-2014)

Reference #	Mitigation #	County Mitigation Measures and Conditions Monitored by Discipline	Monitoring Frequency	Third Quarter																			
				7/22/2014	Status*	Further Review Needed/Comments**	Resolved*	8/12/2014	Status*	Further Review Needed/Comments**	Resolved*	8/27/2014	Status*	Further Review Needed/Comments**	Resolved*	9/23/2014	Status*	Further Review Needed/Comments**	Resolved*	10/8/2014	Status*	Further Review Needed/Comments**	Resolved*
Air Quality – 6.01		Active Area Fill	ongoing	✓	C	NONE		✓	C	NONE		✓	C	NONE		✓	C	NONE		✓	C	NONE	
Air Quality – 6.01		Soil Sealant	ongoing																				
Air Quality – 6.01		Dust Emissions-Road Maintenance	ongoing	✓	C	NONE		✓	C	NONE		✓	C	NONE		✓	C	NONE		✓	C	NONE	
Air Quality – 6.01		Access Roads-Paving	ongoing	✓	C	NONE		✓	C	NONE		✓	C	NONE		✓	C	NONE		✓	C	NONE	
Air Quality – 6.01		Dust Generation-Dumping	ongoing	✓	C	NONE		✓	C	NONE		✓	C	NONE		✓	C	NONE		✓	C	NONE	
Air Quality – 6.01		Water Tanks/Piping Maintenance	ongoing	✓	C	NONE		✓	C	NONE		✓	C	NONE		✓	C	NONE		✓	C	NONE	
Air Quality – 6.01		Wind Speed Monitoring	ongoing	✓	C	NONE		✓	C	NONE		✓	C	NONE		✓	C	NONE		✓	C	NONE	
Air Quality – 6.01		Report Submission-Dust/Odor	every quarter	/				/				/				/				/			
Odor/Landfill Gas – 7.03		Odor/Landfill Gas Monitoring Program	ongoing	/				/				/				/				/			
Odor/Landfill Gas – 7.03		Landfill Surface Sampling	ongoing	/				/				/				/				/			
Odor/Landfill Gas – 7.03		Landfill Perimeter Air Samples	ongoing	/				/				/				/				/			
Odor/Landfill Gas – 7.03		Landfill Surface Monitoring	ongoing	/				/				/				/				/			
Odor/Landfill Gas – 7.03		LFG Collection System Monitoring	ongoing	/				/				/				/				/			
Noise – 9.01		Landfill Access/Operation	info	/				/				/				/				/			
Noise – 9.03		Landfill Equipment-Mufflers/Silencers	ongoing	✓	C	NONE		✓	C	NONE		✓	C	NONE		✓	C	NONE		✓	C	NONE	
Admin Rpts/Pqms-17.16		Air Quality Monitoring-Corrective Action Plan	ongoing	/				/				/				/				/			
Hydrology, Hazardous Waste / Risk of Upset																							
IMP - Part IV.E	IMP 4	Load Inspection-Random Manual	ongoing																				

* C = Compliant, NC = Non-Compliant, FRN = Further Review Needed, R = Resolved

** See Appendix I for Comments

Checkmark = Condition or mitigation was monitored

/ = Yearly or non-ongoing monitoring frequency

Sunshine Canyon Landfill County Mitigation Monitoring Summary

(07-01-2014 through 09-30-2014)

Reference #	Mitigation #	County Mitigation Measures and Conditions Monitored by Discipline	Monitoring Frequency	Third Quarter																			
				7/22/2014	Status*	Further Review Needed/Comments**	Resolved*	8/12/2014	Status*	Further Review Needed/Comments**	Resolved*	8/27/2014	Status*	Further Review Needed/Comments**	Resolved*	9/23/2014	Status*	Further Review Needed/Comments**	Resolved*	10/8/2014	Status*	Further Review Needed/Comments**	Resolved*
Groundwater - 3.05		Leachate Collection and Removal System	ongoing																				
Groundwater - 3.15		Underground Diesel Fuel Storage Tanks	ongoing	/	NA	NONE		/	NA	NONE		/	NA	NONE		/	NA	NONE		/	NA	NONE	
Fire Service - 12.02		On-site Fire Response Capabilities-Operating	ongoing																				
Fire Service - 12.03		On-site Fire Response Capabilities-Roads/Water	ongoing																				
Fire Service - 12.04		On-site Fuel Storage Tanks-Permit Issuance	ongoing																				
Fire Service - 12.05		Building Limits	ongoing																				
Fire Service - 12.06		Methane Gas Monitoring-On-site Structures	ongoing																				
Hazardous Materials – 13.02		Waste Load Checking Program	ongoing																				
Hazardous Materials – 13.05		Hazardous Waste Disposal	ongoing																				
Hazardous Materials – 13.10		Hazardous Waste-Procedures	ongoing																				
Hazardous Materials – 13.11		Spill Response Program	ongoing																				
Safety - 16.02		Injury and Illness Prevention Program	status																				
Safety - 16.03		Working Conditions-Monitoring	status																				
Safety - 16.04		Inspection Checklist-Work Area Exposure	status																				
Safety - 16.07		Accident/Injury Reports	status																				
Safety - 16.08		First-aid Kits	ongoing																				
Safety - 16.10		Lockout/Blackout Procedures	status																				
Safety - 16.11		Personal Protective Equipment	status																				
Landfill Operation 18.8		Prohibited Waste Procedures	ongoing																				
Archaeologist																							

* C = Compliant, NC = Non-Compliant, FRN = Further Review Needed, R = Resolved

** See Appendix I for Comments

Checkmark = Condition or mitigation was monitored

/ = Yearly or non-ongoing monitoring frequency

Sunshine Canyon Landfill County Mitigation Monitoring Summary (07-01-2014 through 09-30-2014)

Reference #	Mitigation #	County Mitigation Measures and Conditions Monitored by Discipline	Monitoring Frequency	Third Quarter																			
				7/22/2014	Status*	Further Review Needed/Comments**	Resolved*	8/12/2014	Status*	Further Review Needed/Comments**	Resolved*	8/27/2014	Status*	Further Review Needed/Comments**	Resolved*	9/23/2014	Status*	Further Review Needed/Comments**	Resolved*	10/8/2014	Status*	Further Review Needed/Comments**	Resolved*
Ecological Significance - 62	62	Archaeological/Paleontological Identification/Conservation	ongoing	✓	C	I-j		✓	C	I-k		✓	C	I-l		✓	C	I-m		✓	C	I-n	
IMP - Part VII.B	IMP 7	Archaeological/Paleontological	ongoing	/	NA	NONE		/	NA	NONE		/	NA	NONE		/	NA	NONE		/	NA	NONE	
Archaeological – 5.01		Archaeological Resurvey	ongoing	/	NA	NONE		/	NA	NONE		/	NA	NONE		/	NA	NONE		/	NA	NONE	
Archaeological – 5.02		Onsite Archaeologist	ongoing	/	NA	NONE		/	NA	NONE		/	NA	NONE		/	NA	NONE		/	NA	NONE	
Archaeological – 5.03		Onsite Paleontologist	ongoing																✓	C	I-n		
Archaeological – 5.04		Archaeological/Paleontological Identification Instruction	ongoing	/	NA	NONE		/	NA	NONE		/	NA	NONE		/	NA	NONE		/	NA	NONE	
Archaeological – 5.05		Archaeological Resource Cura	ongoing	/	NA	NONE		/	NA	NONE		/	NA	NONE		/	NA	NONE		/	NA	NONE	
Paleontologist																							
Ecological Significance - 62	62	Archaeological/Paleontological -Material	ongoing	✓	C	I-j		✓	C	I-k		✓	C	I-l		✓	C	I-m		✓	C	I-n	
IMP - Part VII.B	IMP 7	Archaeological/Paleontological Report Submission	ongoing	✓	C	I-j		✓	C	I-k		✓	C	I-l		✓	C	I-m		✓	C	I-n	

* C = Compliant, NC = Non-Compliant, FRN = Further Review Needed, R = Resolved

** See Appendix I for Comments

Checkmark = Condition or mitigation was monitored

/ = Yearly or non-ongoing monitoring frequency

Further Review Needed-Comments/ I-j through I-m Third Quarter 2014 Site Visits Appendix I

Discipline	City Condition Reference # / Mitigation #	County Condition Reference # / Mitigation #	Responsible Agency	Further Review Needed-Comments
Project Manager	Q – B.2.c		City Planning	I-j: The access road realignment project has been stopped and the current contractor is being replaced. The project is being delayed until Spring 2015.
	Q – B.2.d		City Planning	I-j: The City's 10-year Phase III review shall begin in 2015 and shall be concluded within six months. Any corrective measures deemed necessary by TAC or City review shall be formulated and imposed within the following six-month period. There shall be no interruption of service during the establishment and implementation of any corrective measures.
	Q - C.10.c		City Planning	I-l: The initial test operations and test electric power sales from the gas-to-energy facility was being performed at the time of the monitoring. All equipment was operating as designed. I-m: All five turbine units were operational at the gas-to-energy facility. The facility was producing 22 MW gross with a net sales of 18.2 MW. This is approximately 95% of optimal production. All pretreatment systems appear to be working as designed. A shutdown was scheduled for October 22 and 23 to confirm the effectiveness of the pretreatment system and condition of the turbines.
		Odor/Landfill Gas - 7.07	County Planning/ SCAQMD	I-l and I-m: See Q - C.10.c above.

Discipline	City Condition Reference # / Mitigation #	County Condition Reference # / Mitigation #	Responsible Agency	Further Review Needed-Comments
Project Manager			SCL-LEA	
		Gas - 52	County DPW EPD/SCL-LEA County Forester Fire Warden	I-l and I-m: See Q - C.10.c above.
		Revegetation - 44 F	SCL-LEA/ County DPW EPD Regional Planning County Biologist	I-j through I-m: See M - 4.1.1/6 below under Biologist Discipline.
	M - 4.2.13/33		City Planning/ SCAQMD SCL-LEA	I-l: There were strong localized odors around the condensate treatment plant. While walking around the facility, methane levels of 200-1500 ppm were measured using a hand-held RKI GX 2002 gas meter. Odors were not detected once we left the condensate facility. Republic staff was notified of the odors and gas levels detected.
	M -4.2.13/ 29, 30, 32, 33, 34		City Planning/SCL- LEA/SCAQMD	I-j, I-k, and I-m on 33 and I-j through I-m on all others: Compliance with these mitigation measures concerning landfill gas monitoring and odor control and detection is being monitored by a multi-agency team led by the SCAQMD. Only obvious gas emission sources, lack of cover, or exposed trash resulting in odor and gas emissions observed during the monitoring visit will be reported. None of these were observed during the quarterly monitoring visits this period.
		Amendment 45.N - 4.a, 4.c, 4.d	County DPW-EPD	See M-4.2.13/29, 30, 32, 33, and 34 above.
		Amendment 45.N - 5	County DPW-EPD	See M-4.2.13/29, 30, 32, 33, and 34 above.

Discipline	City Condition Reference # / Mitigation #	County Condition Reference #/ Mitigation #	Responsible Agency	Further Review Needed-Comments
Project Manager		Surface Water - 2.15	County DPW EPD/ LARWQCB, SCL- LEA	I-m: See M-4.3.1/46 below.
		Odor/Landfill Gas - 7.06	County DPW- EPD/SCL- LEA/SCAQMD	I-l: See M-4.2.13/33 above.
	M - 4.4.2/69		City Planning	I-l: There are still City of Los Angeles property transfer issues with the wetland and riparian mitigation at the Chatsworth Reservoir. The Corps of Engineers had given an extension of time on the implementation of a mitigation program until the end of 2014.
	M - 4.9.3/109, 110		City Planning	I-l: Illegal dumping of a cabinet was observed on Sierra Highway north of the I-14 overpass. The area had no wind-blown litter. I-m: The illegally dumped cabinet that was observed on the prior site monitoring visit was still on the side of the road.
		Visual - 10.11	SCL-LEA	I-l and I-m: see M - 4.9.3/109 above.
Civil and Geotechnical Engineer	M - 4.1.1 / 2, 4 and 5		City Planning/ LARWQCB CalRecycle SCL-LEA LADBS PW-BOE	I-m: Grading for the new access road has been stopped. Plans that have any grading outside of the landfill footprint should be provided to and approved by the City of Los Angeles Building Department and the County Department of Public Works.
		Geology - 1.02	County DPW EPD/ County LEA	I-m: See M - 4.1.1 / 2, 4 and 5 above.
		Geology - 1.07	County DPW EPD/ County LEA	I-m: See M - 4.1.1 / 2, 4 and 5 above.

Discipline	City Condition Reference # / Mitigation #	County Condition Reference # / Mitigation #	Responsible Agency	Further Review Needed-Comments
Hydrologist	M-4.3.1/36		City Planning/ LARWQCB CalRecycle SCL-LEA PW-BOE	I-m: There is no clear drainage pattern on the landfill top decks and there are numerous low spots where water may pond and infiltrate.
		Surface Water - 2.03	County DPW EPD/ LARWQCB SCL-LEA	I-m: See M-4.3.1/36 above.
	M - 4.3.1/ 37, 38		City Planning/ LARWQCB CalRecycle SCL-LEA PW-BOE	I-m: Temporary and permanent drainage ditches have been installed to convey water to the basins. The majority of inactive and/or areas that have been disturbed have no temporary or permanent vegetation to retard erosion. The V-ditch near the front entrance has numerous pipes in the ditch impacting flow capacity. The oil field road repaving reduced the height of a berm that now does not divert runoff as it should.
		Surface Water - 2.12	County DPW EPD/ LARWQCB SCL-LEA	I-m: See M - 4.3.1/ 37, 38 above.
	M - 4.3.1/ 40, 45		City Planning/ LARWQCB CalRecycle SCL-LEA PW-BOE LADBS	I-m: Winterization of the slopes was on-going. Straw wattles were placed on the upper slopes and lower reaches near the proposed temporary basin. Though we have not been able to review the overall winterization plans, straw wattles may not be enough to control erosion on the steep slopes extending from the current access road.

Discipline	City Condition Reference # / Mitigation #	County Condition Reference #/ Mitigation #	Responsible Agency	Further Review Needed-Comments
Hydrologist		Surface Water - 2.14	LARWQCB / County DPW EPD	I-m: See M - 4.3.1/ 40, 45 above.
	M - 4.3.1/ 46		City Planning/ LARWQCB CalRecycle PW-BOE	I-m: A portion of the west side drainage channel between Basin A and Basin D has the floor of the channel uplifted and portions of the concrete walls spalling. There is no sign of eminent failure. However, maintenance should be scheduled.
		Surface Water - 2.15	LARWQCB / County DPW EPD	I-m: See M - 4.3.1/ 46 above.
Biologist	M - 4.1.1 / 6		City Planning/ LARWQCB CalRecycle SCL-LEA LADBS	I-j through I-m: The hydroseeding of interim or inactive slopes were complete in June. Due to the lack of rain and no irrigation, the hydroseeding did not germinate.
		Geology - 1.14	LARWQCB/ County Forester	I-j through I-m: See M - 4.1.1/6 above.
	M - 4.2.11 / 23		City Planning	I-j through I-m: See M - 4.1.1/6 above.
		Geology - 1.13	County DPW EPD/ County Forester LARWQCB	I-j through I-m: See M - 4.1.1/6 above.
	M - 4.2.12		SCL-LEA/ City Planning	I-j through I-m: See M - 4.1.1/6 above.
		Revegetation - 44.A	SCL-LEA/ County DPW EPD Regional Planning County Biologist	I-j through I-m: See M - 4.1.1/6 above.
		Biota - 4.42	SCL-LEA	I-j through I-m: See M - 4.1.1/6 above.
		Air Quality - 6.02	SCAQMD/ SCL-LEA	I-j through I-m: See M - 4.1.1/6 above.

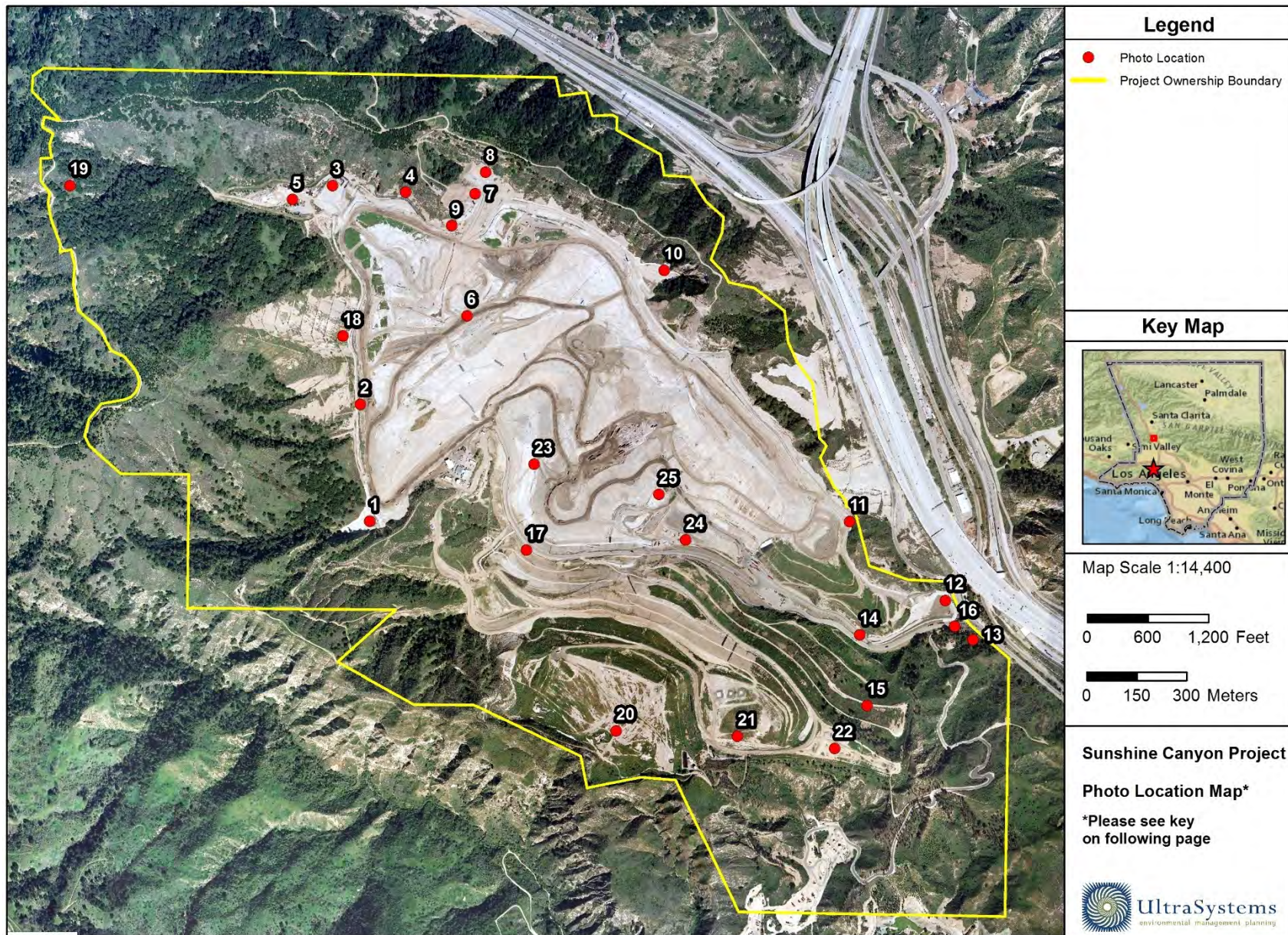
Discipline	City Condition Reference # / Mitigation #	County Condition Reference #/ Mitigation #	Responsible Agency	Further Review Needed-Comments
Biologist		Visual - 10.08	County Forester	I-j through I-m: See M - 4.1.1/6 above.
	M - 4.4.1 / 60		City Planning	I-k: Deck C sage mitigation was monitored to check on plant growth. The test areas with the highest growth was <i>Atriplex lentiformis</i> and <i>Atriplex canescens</i> . These species appear to do well with the high saline soils. There is a concern that <i>Artemisia californica</i> and <i>Eriogonum fasciculatum</i> are the host plant species for the leafhopper insects that serve as the main prey for the California Gnatcatcher. Therefore, the next step would be to populate the barren areas with the host plant species. The <i>Atriplex</i> was being selectively pruned to allow <i>Encelia</i> to grow through. Irrigation was reduced to mimic the natural rainfall regime.
		Biota - 4.27	SCL-LEA/CDFW	I-k: The County sage mitigation area had no revegetation activity occurring.
Archaeologist	M-4.19.1/183		City Planning	I-j through I-m: Archaeological surveys were performed on the area west of the office facilities and an area south of there where site grading was being done. No items of concern were found. Archaeological reports are on file and are available in Republic's offices.
		Ecological Significance 62	County Planning	I-j through I-m: See M-4.19.1/183 above.

Discipline	City Condition Reference # / Mitigation #	County Condition Reference #/ Mitigation #	Responsible Agency	Further Review Needed-Comments
Paleontologist	M-4.19.2/187		City Planning	I-j through I-m: A paleontological survey and field inspections were performed during grading operations. No items were recoverable except for marine bone fragments. Paleontological reports are on file and are available in Republic's offices.
		Ecological Significance 62	County Planning	I-j through I-m: See M-4.19.2/187 above.

Appendix II

Relevant Site Photos

[This page is blank for printing]



Service Layer Credits: National Geographic, Esri, DeLorme, HERE, UNEP-WCMC, USGS, NASA, ESA, METI, NRCAN, GEBCO, NOAA, increment P Corp., Los Angeles County, 2010; Republic, 2013; UltraSystems Environmental, Inc., 2014

[This page is blank for printing]

Location Map – Photo Map Key

Location	Title	Photo Number
1.	Basin A	7-15
2.	Westside Drainage Channel	16-29
3.	Basin D	-
4.	Basin D North Drainage	41-42
5.	Materials Storage Area	40-40
6.	County Top Deck	51-79
7.	Flares 8-10	80-81
8.	Gas-to Energy Facility	80-81
9.	Flares 8-10 Adjacent Hillsides	43-50
10.	Basin B	86-89
11.	Eastside Drainage Channel	82-85
12.	Terminal Basin	103-113
13.	Wastewater Sewer Connection Facility	114-118
14.	Existing Access Road	145-162
15.	Access Road Realignment Area	119-144
16.	Leachate Treatment Facility	-
17.	New Truck Scale Facilities	172-178
18.	County Sage Mitigation	30-39
19.	Big Cone Fir Mitigation	-
20.	City Sage Mitigation - Deck A	-
21.	City Sage Mitigation - Deck B	210-216
22.	City Sage Mitigation - Deck C	179-209
23.	Cell CC3A	-
24.	Cell CC3A Buttress Area	-
25.	Site Working Area	230-244

[This page is blank for printing]



Photo 1: Site Grading West of Office: July 22, 2014



Photo 2: Site Grading West of Office: July 22, 2014



Photo 3: Site Grading West of Office: July 22, 2014



Photo 4: Site Grading West of Office: July 22, 2014



Photo 5: Whale Bone Fragments in Grading West of Office: July 22, 2014



Photo 6: Whale Bone Fragments in Grading West of Office: July 22, 2014



Photo 7: Basin A: July 22, 2014



Photo 8: Basin A: July 22, 2014



Photo 9: Basin A: August 14, 2014



Photo 10: Basin A: August 14, 2014



Photo 11: Basin A: August 14, 2014



Photo 12: Basin A: August 27, 2014



Photo 13: Basin A: August 27, 2014



Photo 14: Basin A: August 27, 2014



Photo 15: Basin A: August 27, 2014



Photo 16: Westside Drainage Channel: July 22, 2014



Photo 17: Westside Drainage Channel: July 22, 2014



Photo 18: Westside Drainage Channel: July 22, 2014



Photo 19: Westside Drainage Channel: July 22, 2014



Photo 20: Westside Drainage Channel: July 22, 2014



Photo 21: Westside Drainage Channel: August 14, 2014



Photo 22: Westside Drainage Channel: August 14, 2014



Photo 23: Westside Drainage Channel: August 14, 2014



Photo 24: Westside Drainage Channel: August 14, 2014



Photo 25: Westside Drainage Channel: August 27, 2014



Photo 26: Westside Drainage Channel: August 27, 2014



Photo 27: Westside Drainage Channel: September 23, 2014



Photo 28: Westside Drainage Channel: September 23, 2014



Photo 29: Westside Drainage Channel: September 23, 2014



Photo 30: County Sage Mitigation Area: July 22, 2014



Photo 31: County Sage Mitigation Area: July 22, 2014



Photo 32: County Sage Mitigation Area: July 22, 2014



Photo 33: County Sage Mitigation Area: July 22, 2014



Photo 34: County Sage Mitigation Area: July 22, 2014



Photo 35: County Sage Mitigation Area: August 14, 2014



Photo 36: County Sage Mitigation Area: August 14, 2014



Photo 37: County Sage Mitigation Area: August 14, 2014



Photo 38: County Sage Mitigation Area: August 14, 2014



Photo 39: County Sage Mitigation Area: August 14, 2014



Photo 40: Material Storage Area: August 27, 2014



Photo 41: Basin D Outlet Channel: September 23, 2014



Photo 42: Basin D Outlet Channel: September 23, 2014



Photo 43: Flare 8 Hillside: July 22, 2014



Photo 44: Flare 8 Hillside: July 22, 2014



Photo 45: Flare 8 Hillside: July 22, 2014



Photo 46: Flare 8 Hillside: July 22, 2014



Photo 47: Flare 8 Hillside: July 22, 2014



Photo 48: Flare 8 Hillside: July 22, 2014



Photo 49: Flare 8 Hillside: August 14, 2014



Photo 50: Flare 8 Hillside: August 14, 2014



Photo 51: County Top Deck: July 22, 2014



Photo 52: County Top Deck: July 22, 2014



Photo 53: County Top Deck: July 22, 2014



Photo 54: County Top Deck: July 22, 2014



Photo 55: County Top Deck: July 22, 2014



Photo 56: County Top Deck: July 22, 2014



Photo 57: County Top Deck: August 14, 2014



Photo 58: County Top Deck: August 14, 2014



Photo 59: County Top Deck: August 14, 2014



Photo 60: County Top Deck: August 14, 2014



Photo 61: County Top Deck: August 14, 2014



Photo 62: County Top Deck: August 14, 2014



Photo 63: County Top Deck: August 14, 2014



Photo 64: County Top Deck: August 14, 2014



Photo 65: County Top Deck: August 14, 2014



Photo 66: County Top Deck: August 14, 2014

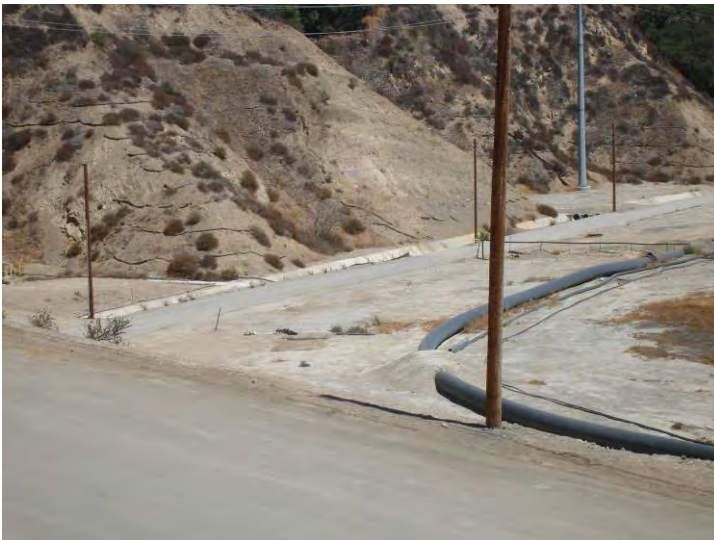


Photo 67: County Top Deck: August 27, 2014



Photo 68: County Top Deck: August 27, 2014



Photo 69: County Top Deck: August 27, 2014



Photo 70: County Top Deck: August 27, 2014



Photo 71: County Top Deck: August 27, 2014



Photo 72: County Top Deck: August 27, 2014



Photo 73: County Top Deck: August 27, 2014



Photo 74: County Top Deck: August 27, 2014



Photo 75: County Top Deck: August 27, 2014



Photo 76: County Top Deck: September 23, 2014



Photo 77: County Top Deck: September 23, 2014



Photo 78: County Top Deck: September 23, 2014



Photo 79: County Top Deck: September 23, 2014



Photo 80: Flares 9 & 10 and Gas to Energy Facility: August 14, 2014



Photo 81: Flares 9 & 10 and Gas to Energy Facility: August 14, 2014



Photo 82: Eastside Drainage to Basin B: July 22, 2014



Photo 83: Eastside Drainage to Basin B: July 22, 2014



Photo 84: Eastside Drainage to Basin B: July 22, 2014



Photo 85: Eastside Drainage to Basin B: August 14, 2014



Photo 86: Basin B: August 14, 2014



Photo 87: Basin B: August 14, 2014



Photo 88: Basin B: September 23, 2014



Photo 89: Basin B: September 23, 2014



Photo 90: Old City North: August 14, 2014



Photo 91: Old City North: August 14, 2014



Photo 92: Old City North: August 14, 2014



Photo 93: Old City North: August 14, 2014



Photo 94: Old City North: August 14, 2014



Photo 95: Old City North: September 23, 2014



Photo 96: Old City North: September 23, 2014



Photo 97: Old City North: September 23, 2014



Photo 98: Old City North: September 23, 2014



Photo 99: Old City North: September 23, 2014



Photo 100: Old City North: September 23, 2014



Photo 101: Old City North: September 23, 2014



Photo 102: Old City North: September 23, 2014



Photo 103: Terminal Basin: August 14, 2014



Photo 104: Terminal Basin: August 14, 2014



Photo 105: Terminal Basin: August 27, 2014



Photo 106: Terminal Basin: September 23, 2014



Photo 107: Terminal Basin: September 23, 2014



Photo 108: Terminal Basin: September 23, 2014



Photo 109: Terminal Basin: September 23, 2014



Photo 110: Terminal Basin: September 23, 2014



Photo 111: Terminal Basin: September 23, 2014



Photo 112: Terminal Basin: September 23, 2014



Photo 113: Terminal Basin: September 23, 2014



Photo 114: Wastewater Sewer Connection Facility: August 27, 2014



Photo 115: Wastewater Sewer Connection Facility: August 27, 2014



Photo 116: Wastewater Sewer Connection Facility: August 27, 2014



Photo 117: Wastewater Sewer Connection Facility: September 23, 2014



Photo 118: Wastewater Sewer Connection Facility: September 23, 2014



Photo 119: Access Road Realignment Area: August 14, 2014



Photo 120: Access Road Realignment Area: August 14, 2014



Photo 121: Access Road Realignment Area: August 14, 2014



Photo 122: Access Road Realignment Area: August 14, 2014



Photo 123: Access Road Realignment Area: September 23, 2014



Photo 124: Access Road Realignment Area: September 23, 2014



Photo 125: Access Road Realignment Area: September 23, 2014



Photo 126: Access Road Realignment Area: September 23, 2014



Photo 127: Access Road Realignment Area: September 23, 2014



Photo 128: Access Road Realignment Area: September 23, 2014



Photo 129: Access Road Realignment Area: September 23, 2014



Photo 130: Access Road Realignment Area: September 23, 2014



Photo 131: Access Road Realignment Area: September 23, 2014



Photo 132: Access Road Realignment Area: September 23, 2014



Photo 133: Access Road Realignment Area: September 23, 2014



Photo 134: Access Road Realignment Area: September 23, 2014



Photo 135: Access Road Realignment Area: September 23, 2014



Photo 136: Access Road Realignment Area: September 23, 2014



Photo 137: Access Road Realignment Area: September 23, 2014



Photo 138: Access Road Realignment Area: September 23, 2014



Photo 139: Access Road Realignment Area: September 23, 2014



Photo 140: Access Road Realignment Area: September 23, 2014



Photo 141: Access Road Realignment Area: September 23, 2014



Photo 142: Access Road Realignment Area: September 23, 2014

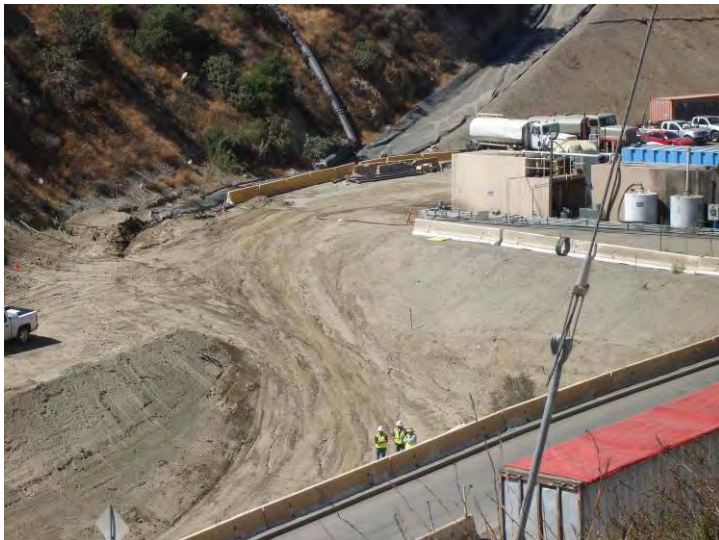


Photo 143: Access Road Realignment Area: September 23, 2014



Photo 144: Access Road Realignment Area: September 23, 2014



Photo 145: Westside Drainage Improvement: August 14, 2014



Photo 146: Westside Drainage Improvement: August 14, 2014



Photo 147: Westside Drainage Improvement: August 14, 2014



Photo 148: Westside Drainage Improvement: August 14, 2014



Photo 149: Westside Drainage Improvement: August 27, 2014



Photo 150: Westside Drainage Improvement: August 27, 2014



Photo 151: City South Drainage System: September 23, 2014



Photo 152: City South Drainage System: September 23, 2014



Photo 153: City South Drainage System: September 23, 2014



Photo 154: City South Drainage System: September 23, 2014



Photo 155: City South Drainage System: September 23, 2014



Photo 156: City South Drainage System: September 23, 2014



Photo 157: City South Drainage System: September 23, 2014



Photo 158: City South Drainage System: September 23, 2014



Photo 159: City South Drainage System: September 23, 2014



Photo 160: City South Drainage System: September 23, 2014



Photo 161: City South Drainage System: September 23, 2014



Photo 162: City South Drainage System: September 23, 2014



Photo 163: City South Drainage System: September 23, 2014

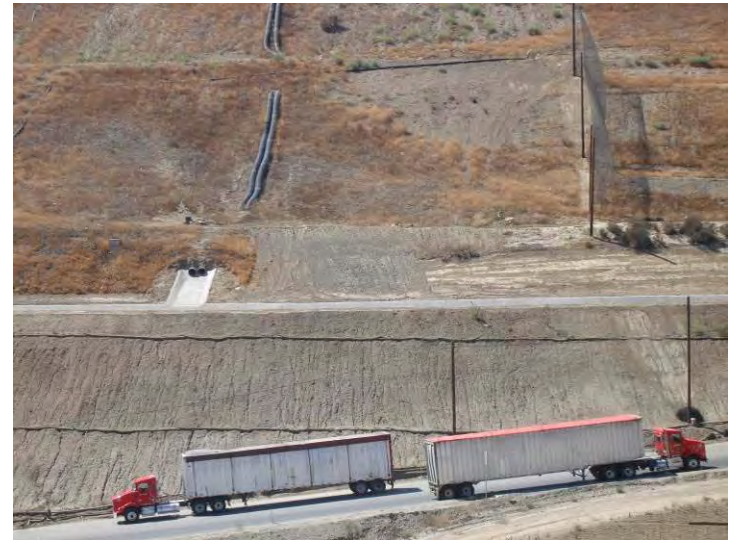


Photo 164: City South Drainage System: September 23, 2014



Photo 165: City South Drainage System: September 23, 2014



Photo 166: City South Drainage System: September 23, 2014



Photo 167: City South Drainage System: September 23, 2014



Photo 168: City South Drainage System: September 23, 2014



Photo 169: City South Drainage System: September 23, 2014



Photo 170: City South Drainage System: September 23, 2014



Photo 171: City South Drainage System: September 23, 2014



Photo 172: New Truck Scale Facilities: July 22, 2014



Photo 173: New Truck Scale Facilities: July 22, 2014



Photo 174: New Truck Scale Facilities: August 14, 2014



Photo 175: New Truck Scale Facilities: August 27, 2014

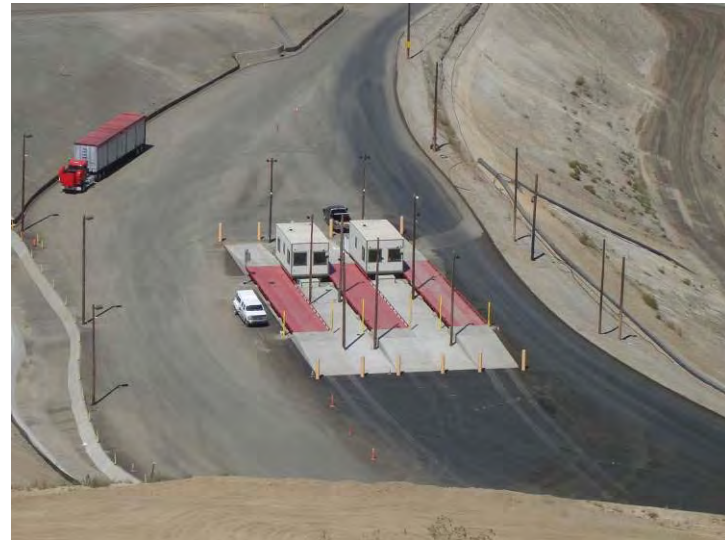


Photo 176: New Truck Scale Facilities: September 23, 2014



Photo 181: City Sage Mitigation Deck C: July 22, 2014



Photo 182: City Sage Mitigation Deck C: July 22, 2014



Photo 183: City Sage Mitigation Deck C: July 22, 2014



Photo 184: City Sage Mitigation Deck C: July 22, 2014



Photo 185: City Sage Mitigation Deck C: July 22, 2014



Photo 186: City Sage Mitigation Deck C: July 22, 2014



Photo 187: City Sage Mitigation Deck C: July 22, 2014



Photo 188: City Sage Mitigation Deck C: August 27, 2014



Photo 189: City Sage Mitigation Deck C: August 27, 2014



Photo 190: City Sage Mitigation Deck C: August 27, 2014



Photo 191: City Sage Mitigation Deck C: August 27, 2014



Photo 192: City Sage Mitigation Deck C: August 27, 2014



Photo 193: City Sage Mitigation Deck C: August 27, 2014



Photo 194: City Sage Mitigation Deck C: August 27, 2014



Photo 195: City Sage Mitigation Deck C: August 27, 2014



Photo 196: City Sage Mitigation Deck C: September 23, 2014



Photo 197: City Sage Mitigation Deck C: September 23, 2014



Photo 198: City Sage Mitigation Deck C: September 23, 2014



Photo 199: City Sage Mitigation Deck C: September 23, 2014



Photo 200: City Sage Mitigation Deck C: September 23, 2014



Photo 201: City Sage Mitigation Deck C: September 23, 2014



Photo 202: PM-10 Mitigation Planting: August 27, 2014



Photo 203: PM-10 Mitigation Planting: August 27, 2014



Photo 204: PM-10 Mitigation Planting: August 27, 2014



Photo 205: PM-10 Mitigation Planting: August 27, 2014



Photo 206: PM-10 Mitigation Planting: September 23, 2014



Photo 207: PM-10 Mitigation Planting: September 23, 2014



Photo 208: PM-10 Mitigation Planting: September 23, 2014



Photo 209: PM-10 Mitigation Planting: September 23, 2014



Photo 210: City Sage Mitigation Deck B: July 22, 2014



Photo 211: City Sage Mitigation Deck B: July 22, 2014



Photo 212: City Sage Mitigation Deck B: July 22, 2014



Photo 213: City Sage Mitigation Deck B: July 22, 2014



Photo 214: City Sage Mitigation Deck B: July 22, 2014



Photo 215: City Sage Mitigation Deck B: September 23, 2014



Photo 216: City Sage Mitigation Deck B: September 23, 2014



Photo 217: Oak Tree Mitigation along Oil Field Road: Sept. 23, 2014



Photo 218: Oak Tree Mitigation along Oil Field Road: Sept. 23, 2014



Photo 219: Oak Tree Mitigation along Oil Field Road: Sept. 23, 2014



Photo 220: Oak Tree Mitigation along Oil Field Road: Sept. 23, 2014



Photo 221: Oak Tree Mitigation along Oil Field Road: Sept. 23, 2014



Photo 222: Oak Tree Mitigation along Oil Field Road: Sept. 23, 2014



Photo 223: Condensate Treatment Facility: August 27, 2014



Photo 224: Condensate Treatment Facility: August 27, 2014



Photo 225: Southern Perimeter Unlocked Gate: August 27, 2014



Photo 226: Southern Perimeter Unlocked Gate: September 23, 2014



Photo 227: Sierra Highway near I-14: August 27, 2014



Photo 228: Sierra Highway near I-14: August 27, 2014



Photo 229: Sierra Highway near I-14: September 23, 2014



Photo 230: Site Working Area: July 22, 2014



Photo 231: Site Working Area: July 22, 2014



Photo 232: Site Working Area: July 22, 2014



Photo 233: Site Working Area: July 22, 2014



Photo 234: Site Working Area: July 22, 2014



Photo 235: Site Working Area: August 14, 2014



Photo 236: Site Working Area: August 14, 2014



Photo 237: Site Working Area: August 14, 2014



Photo 238: Site Working Area: August 14, 2014



Photo 239: Site Working Area: August 27, 2014



Photo 240: Site Working Area: August 27, 2014



Photo 241: Site Working Area: August 27, 2014



Photo 242: Site Working Area: September 23, 2014



Photo 243: Site Working Area: September 23, 2014



Photo 244: Site Working Area: September 23, 2014



Photo 245: Site: July 22, 2014



Photo 246: Site: July 22, 2014



Photo 247: Site: July 22, 2014



Photo 248: Site: July 22, 2014



Photo 249: Site: July 22, 2014



Photo 250: Site: July 22, 2014



Photo 251: Site: August 14, 2014



Photo 252: Site: August 14, 2014



Photo 253: Site: August 14, 2014



Photo 254: Site: August 14, 2014



Photo 255: Site: August 14, 2014



Photo 256: Site: August 27, 2014



Photo 257: Site: August 27, 2014



Photo 258: Site: August 27, 2014



Photo 259: Site: August 27, 2014



Photo 260: Site: August 27, 2014



Photo 261: Site: August 27, 2014



Photo 262: Site: August 27, 2014



Photo 263: Site: August 27, 2014



Photo 264: Site: August 27, 2014



Photo 265: Site: August 27, 2014



Photo 266: Site: September 23, 2014



Photo 267: Site: September 23, 2014



Photo 268: Site: September 23, 2014



Photo 269: Site: September 23, 2014



Photo 270: Site: September 23, 2014



Photo 271: Site: September 23, 2014



Photo 272: Site: September 23, 2014



Photo 273: Site: September 23, 2014

Appendix III

Quarterly Site Visits: Site Visit Attendees by Date of Site Visit/ Mitigation Monitoring Site Reports

UltraSystems Staff Fields of Expertise:

James Aidukas	Project Manager, Permitting and Operations/ Engineer
Mike Lindsay	Air Quality, Noise, Vehicle Emissions, Environmental Specialist/ Engineer
Jack Emerson	Air Quality, Noise, Hydrology, Hazardous Waste
Michelle Tollett	Senior Biological Resources Manager

SES Staff Fields of Expertise:

Tarik Hadj-Hamou	Geology
------------------	---------

July Site Visits

July 22, 2014:

James Aidukas (UltraSystems)


Mike Lindsay (UltraSystems)

Michelle Tollett (UltraSystems)



UltraSystems
environmental • management • planning

**SUNSHINE CANYON LANDFILL
MITIGATION MONITORING SITE REPORT**

Monitor: James Aidukas	Page: 1 of 1
Discipline: Project Manager	Date: July 22, 2014
Site Conditions: Clear and sunny, 75-95°F, no wind	
SITE LOG	
<p>Republic Site Manager - Rob Sherman</p> <p>Met with John Nelson (LACDPW), Michelle Tollett and Mike Lindsay (UltraSystems). Checked in at Republic's office. Mike Lindsay proceeded to monitor deck elevations and flare station operations. John Nelson, Michelle Tollett, and I proceeded to monitor the site and observed the following:</p> <ul style="list-style-type: none"> • The site west of the main office was being graded. A paleontologist monitor was on-site to monitor during earth moving operations. Fragment fossils of whales and dolphins were found. No recoverable whole fossils were seen. • Basin A was clean and blocked off at the outflow risers to allow for downstream drainage construction and main access road realignment work. Wind-blown litter was seen on the northwest native hillside. • The condition of the westside drainage channel between Basin A and Basin D had worsened. The trees adjacent to the channel are causing sidewall concrete to crack. Another section has the side wall concrete spalling. The lifting of the center of the concrete floor has increased. An engineering investigation should be performed to determine the cause of these conditions along with remedies. Maintenances should be scheduled. • The County Coastal Sage Mitigation area had no mitigation activity. The restarting of revegetation efforts should be reconsidered using wattles, hand-spread seed, and repairing and use of the existing irrigation system. • The Flare 8 location and the hillside below it will be graded for future flares. The hillside area should have the vegetation resource evaluated for coastal sage and rare plants, birds, and lizards before any removal of vegetation occurs. • The inlet channel to Basin B was partially blocked with debris. • Basin B had sediment and weeds near the outlet risers. The basin has not been cleaned. • Foundations were being poured for the new County truck scales. • The Deck C sage mitigation was doing well. Black sage plants were not surviving. Salt bush was having the most success. Irrigation appears to have been reduced to mimic the time of the season and plant water needs. <p>Flare operating conditions:</p> <ul style="list-style-type: none"> ○ Flare 1 - 1683° F, 2389 SCFM, -64.63" H₂O vacuum ○ Flare 3 - 1657° F, 1999 SCFM, -62.5" H₂O vacuum ○ Flare 9 - 1671° F, 3792 SCFM, -56" H₂O vacuum ○ Flare 10 - 1648° F, 3534 SCFM, -28" H₂O vacuum 	
FURTHER REVIEW NEEDED	
COMMENTS	
<p>Signed: </p>	

Monitor: Mike Lindsay	Page 1 of 1
Discipline: Environmental Engineer	Date: 07-22-14 Tue.
Site Conditions: Clear, sunny, 68-88°F, 5-19 mph	
SITE LOG	
1. Met with John Nelson (LACDPW), Jim Ardukas, Michelle Tollett (Ultra Systems), and checked in to Republic's office.	
2. Took GPS measurements at County Top Deck using a handheld GPS device (Trimble 2008 GeoXH) with ±0.1 meter accuracy. Final grade contour lines (e.g. 1850 Feet, 1900 Feet) and City/County boundary line were focused on for grade levels.	
3. Observed Temporary Flare blowers and equipment skid have been removed (this Flare is being decommissioned).	
4. Observed water trucks applying water throughout site.	
FURTHER REVIEW NEEDED	
Project Number: 5800	
Signed: Mike Lindsay	



**SUNSHINE CANYON LANDFILL
CITY & COUNTY SITE MEETING MINUTES
DECK C SAGE MITIGATION**

Monitor: Michelle Tollett

Page: 1 of 2

Discipline: Sr. Biologist

Date: 7/22/2014

Site Conditions: Sunny, hot, 76-97 degrees F, winds 0-1mph

Arrived onsite 8am and signed in at trailers, we met Peggy at the front desk.

Jim Aidukas, John Nelson (LACDPW Inspector) and Michelle Tollett drove in one vehicle. Mike Lindsay drove separately to another onsite location.

- Drove to Sediment Basin A and noted fallen sandstone rock into the basin. Basin appears intact.
- Drove down the west side drainage and observed a dead southern pacific rattlesnake (*Crotalus oregonus helleri*) that was dead from a vehicle strike. It was approximately 4 ½ feet long and had venom dripping from its fangs.
- Inspected the County coastal sage scrub mitigation area. It appears that pioneer species like California buckwheat (*Eriogonum fasciculatum*), a few California sagebrush (*Artemisia californica*) and invasive annual grasses are taking hold in some areas. Ideally, a seed mix and planting should be installed on these steep denuded slopes.
- Inspected the County hillside of intact coastal sage scrub under Flare #8 that may be removed. This area may not be included in the original design plans for removal and is not accounted for in the overall mitigation agreement. This needs to be discussed with the resource agencies prior to removal, unless it was already incorporated into the overall impact acreage calculations. The last rare plant survey on this hillside was 1990, approximately 24 years ago.
- Sediment Basin B was inspected and appears to be intact.
- Visited the methane energy generating facility. Took a tour with the gas-to-energy plant manager. It was very loud and I could not hear almost anything that was discussed. However, it did appear that the site was operational and the engineers were working out the grand opening kinks.
- City Deck C was inspected for planting success and overall conditions. It appears that the Atriplex species are doing well. The *Artemisia californica* may be in summer dormancy. Many of the other species have died back. It appears that the site may be a bit overwatered as noted by mud and surface water at the site. It also appears that the site does not receive water in a balanced way with water pooling in some areas and completely missing other necessary areas, which could explain the high rate of dieback by many species. Suggested watering schedule is 45min 6am and 8pm M W F during the summer for the first year. Once plants are established, the water should be removed completely.
- City Deck A – Flare 1 – Flare 3 were all inspected and appear intact. No issues biologically.
- Flares 9 & 10 were inspected by the engineers
- We stopped in the offices again and met with Achaya Kelapanda, Environmental Manager to discuss findings onsite.
- A plan should be developed and implemented:
 - for improving the County sage mitigation area;
 - for the revegetation of the permanent slope north of Flare #9;
 - and for the revegetation of the temporary and inactive slopes and decks.
- In addition, the Atriplex species on Deck C appear to be quite successful, perhaps due to the high saline soils. If this is the case, we can use documented research to show that CAGN may also nest in these areas. As this project site was never actually “occupied” habitat and the objective is to create “suitable” habitat for the CAGN, it appears we would meet that parameter by 1)

continued installation of coastal sage scrub species - especially pioneer species such as California buckwheat, California sagebrush and encelia 2) installation of halophytic species including *Atriplex* species to provide shelter and secondarily preferred habitat, which co-occurs in coastal sage scrub communities 3) maintain host plants for main prey species of the CAGN. 4) if necessary, we may bring in prey species of CAGN, 5) if necessary, we may inoculate the soils with local mycorrhizae for optimal health of the CSS community.

- The original approved plant palette may require slight adjustments to meet these objectives. If adjusted, the resource agencies should be notified.
- Removal of the County hillside below Flare 8 should be discussed prior to removal. Items to be reviewed include results of rare plant survey, if this area was accounted for in original grading plans or if new impact, area should be mapped and measured, a species list of area should be made prior to removal. If an additional rare plant survey is necessary, a target species list should be produced and reviewed for bloom periods, which will dictate if the rare plant survey should be a 2 or 3 season visit during 2014-2015.
- A comprehensive mapping of the original vegetation to impacts should be made showing available mitigation areas to date.

Species observed: Side blotch lizard, western fence lizard, CORA, LEGO, SAPH, SCJA

Dominant CSS species: *Eriogonum fasciculatum*, *Encelia farinosa*, *Artemisia californica*, *Salvia apiana*, *Adenostoma fasciculatum*. Chaparral dominants: *Adenostoma fasciculatum*, *Quercus* sp., *Sambucus nigra caerulea*, and *Malosoma laurina*.

Signed: Michelle Tollett

August Site Visits

August 14, 2014:

James Aidukas (UltraSystems)

Mike Lindsay (UltraSystems)

August 27, 2014:

James Aidukas (UltraSystems)

Mike Lindsay (UltraSystems)



**SUNSHINE CANYON LANDFILL
MITIGATION MONITORING SITE REPORT**

Monitor: James Aidukas	Page: 1 of 2
Discipline: Project Manager	Date: August 14, 2014
Site Conditions: Clear and sunny, 70-90°F, mild wind gusts	
SITE LOG	
<p>Republic Site Manager - Rob Sherman</p> <p>Met with John Nelson (LACDPW), George Kasikarian (City LEA), and Mike Lindsay (UltraSystems). Checked in at Republic's office and briefly spoke with Patti Costa. Mike Lindsay proceeded to monitor deck elevations and check areas for potential localized gas emissions. John Nelson, George Kasikarian, and I proceeded to monitor the site and observed the following:</p> <ul style="list-style-type: none"> • Site grading was being done on the area west of the main office. A paleontologist was on site performing field surveys. Only fossil fragments have been uncovered, mainly whale bones. • Basin A was clean but blocked at the outlet riser due to drainage channel construction downstream. The adjacent native hillsides have more wind-blown litter since the prior site monitoring. • No maintenance work has been performed on the westside drainage channel since the last monitoring. One sidewall near a tree is showing more cracking, uplifting, and spalling. • There is no activity in the County sage mitigation area. There is no new vegetation, with dry conditions and no irrigation. • Removal of Flare 8 and grading of the hillside will not occur until Spring 2015. • The gas-to-energy facility was nearing the completion of commissioning with test operations scheduled for the end of August. • The County top deck near the City/County boundary has been graded to eliminate low spots. There is no defined drainage flow. • Construction material is being stored on the County top deck near the gas-to-energy construction trailer. • The inlet drainage channel to Basin B is partially blocked with debris. This was observed during the last monitoring. • Basin B sediment has not been removed. The wind-blown litter appears to have been cleaned up from the native hillside around the basin. • The Old City North area has wet weather rock and rubble being stored on the top deck. A 40-yard bin was placed to recycle corrugated steel drainage pipe waste material that was being stockpiled on the top deck. • The terminal basin had approximately 50% of the sediment removed. • The access road realignment project has stopped. No activity was seen in the area. • The westside drainage at the toe of the Old City South landfill is being worked on. The main portion of the concrete channel has been completed. • The working area is a small compact area in the southwest portion of Cell CC-3A. 	

August 14, 2014, page 2 of 2:

Flare operating conditions:

- Flare 1 - 1688° F, 2160 SCFM, -52" H₂O vacuum
- Flare 3 - 1734° F, 2580 SCFM, -63.3" H₂O vacuum
- Flare 9 - 1668° F, 4172 SCFM, -52" H₂O vacuum
- Flare 10 - 1658° F, 4392 SCFM, -52" H₂O vacuum

Met with Patti Costa and Larry Bressman and discussed site construction activity and timing of preparing for winter rains. Patti Costa stated that they were looking at the Enviro Cover System by EPI for an alternative to using soil for daily cover.

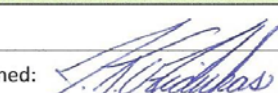
FURTHER REVIEW NEEDED

COMMENTS

Signed: 



**SUNSHINE CANYON LANDFILL
MITIGATION MONITORING SITE REPORT**

Monitor: James Aidukas	Page: 1 of 1
Discipline: Project Manager	Date: August 27, 2014
Site Conditions: Clear and sunny, ~70°	
SITE LOG	
<p>Republic Site Manager - Rob Sherman</p> <p>Met with John Nelson (LACDPW), George Kasikarian (City LEA), and Mike Lindsay (UltraSystems). Checked in at Republic's office. Had a brief conversation with Larry Isrial (SCAQMD) about recent odor complaints. Mike Lindsay monitored the Old South Landfill and the landfill flare stations. John Nelson, George Kasikarian, and I proceeded to monitor the site and observed the following:</p> <ul style="list-style-type: none"> • The terminal basin was being readied for winter rains. Sediment was being removed. • The access road realignment area was walked from the oil field road to the condensate treatment plant. Grading of some steep slope areas and the creation of detention ponds was being done to prepare for winterizing the area. • There was a large pond of standing water, approximately 10'x20', below the condensate treatment facility. • There was a transient person seen hiking in the open space below the oil field access road. The LEA notified Republic operations staff and they took care of the trespasser. • Basin A was having the soil blocking the outlet risers removed to allow for the basin to discharge to the new westside drainage system. • The new westside drainage system was complete and ready for handling rainwater flow. • The new County truck scales construction was complete. Scales were not yet operational. • The condensate treatment facility had strong localized odors. Odors were not detected once we left the facility. Republic staff was notified of this condition. • The wastewater sewer system was being worked on near the treated water handling facility area. The sewer pipeline had been completed. • Illegal dumping of a cabinet on Sierra Highway north of the I-14 overpass was observed. There was no wind-blown litter. • The initial test operations of the gas-to-energy facility was underway during the monitoring. Sales of electric power to Edison's system was also tested. All equipment was operating as designed. <p>Flare operating conditions:</p> <ul style="list-style-type: none"> ○ Flare 1 - 1706° F, 2246 SCFM, -64.2" H₂O vacuum ○ Flare 3 - 1675° F, 2607 SCFM, -64.7" H₂O vacuum ○ Flare 9 - 1654° F, 2007 SCFM, -52" H₂O vacuum ○ Flare 10 - Not operating 	
FURTHER REVIEW NEEDED	
COMMENTS	
<p align="right">Signed: </p>	



**SUNSHINE CANYON LANDFILL
MITIGATION MONITORING
SITE REPORT**

Monitor: Mike Lindsay	Page <u>1</u> of <u>2</u>
Discipline: Environmental Engineer	Date: <u>Wed. 08-27-14</u>
Site Conditions: <u>Clear, sunny, 77-93°F, 3-15 mph</u>	
SITE LOG	
1. Met with <u>Larry Israel (AQMD Inspector)</u> , <u>John Nelson (LACDPW)</u> , <u>George Kasikarin (City LEA)</u> , <u>Jim Aidukas (Ultra Systems)</u> , and checked into office.	
2. Terminal Sediment Basin is being readied for winter rains (rainy season begins Oct. 15). Piles of soil along NW site are being removed. Water truck applying water to sediment.	
3. Observed standing water pond (~20' x 8') at Bypass Road construction site. Water flowed from Condensate Treatment Plant above excavated area.	
4. Observed transient person hiking down into below Oil Field access road. George Kasikarin called Republic operations to assist with trespassing issue.	
5. Observed old landslide area along Oil Field access road (from 1994 earthquake).	
6. Hiked old landslide area (above and below City Deck C elevation) to check for landfill odors; none detected.	
7. PM-10 Berm is growing well, both small and larger trees.	
8. Monitoring Well P-228 above City Deck C is in good order.	
9. City Deck C Sage Mitigation Area is coping well with the summer heat, as salt bush and quail bush continues to spread and dominate the habitat.	
10. Flare 1 is operating at 2267 SCFM, 1688°F; gas sample measured at 24% Vol. CH ₄ , 4.2% Vol. O ₂ , 87 ppm H ₂ S, 51 ppm CO, and a 145°F supply temp.	
11. City working face is operating with tipper.	
FURTHER REVIEW NEEDED	
12. Flare 3 access road has been diverted due to excavation work at base (for Bypass Access Road project).	
13. Paleo monitor is present at excavation, SE of Admin. buildings.	
14. Sediment Basin A is being cleared by a front-end loader, forming soil and rock berms around two vertical drains.	
15. Wind-blown trash has been removed from NW slope of Sediment Basin A.	
Project Number: 5800	Signed: <u>Mike Lindsay</u>



**SUNSHINE CANYON LANDFILL
MITIGATION MONITORING
SITE REPORT**

Monitor: Mike Lindsay	Page <u>2</u> of <u>2</u>
Discipline: Environmental Engineer	Date: <u>Wed. 08-27-14</u>
Site Conditions: <u>Clear, sunny, 77-93°F, 3-15 mph</u>	
SITE LOG	
<u>16. Westside Drainage is in good condition for rainy season, with only a minimum of sediment buildup.</u>	
<u>17. Westside Drainage concrete continues to crack and buckle near center section.</u>	
<u>18. Monitoring gas Well P-243 is in good condition.</u>	
<u>19. BAS Pipe Storage Yard is in good order, with scrap CMP pile still on site.</u>	
<u>20. Sediment Basin C by Storage Yard is in good condition.</u>	
<u>21. Condensate Treatment Plant has strong odors, generally around entire Facility. Measured 200-1500 ppm CH₄ methane while walking around condensate plant. An RKL GX2003 gas meter was used in Leak Test Mode.</u>	
<u>22. Source of standing water pond at Bypass Road construction site appears to be drainage coming out of Southside Drainage Channel by Condensate Facility. A six-inch-deep hole was dug into pond mud, and no odor was detected from soil or water.</u>	
<u>23. Flare 9 was operating at 2077 SCFM, 1678°F, gas sample measured at 46% Vol. CH₄, 3.2% Vol. O₂, 54 ppm H₂S, over 500 ppm CO, and a 151°F supply temp.</u>	
<u>24. Flare 10 was offline.</u>	
<u>25. The Gas-to-Energy Plant was complete and performing trial tests.</u>	
FURTHER REVIEW NEEDED	
<u>1. Repair Westside Drainage concrete cracks and buckling.</u>	
Project Number: 5800	Signed: <u>Mike Lindsay</u>

September Site Visits

September 23, 2014:

James Aidukas (UltraSystems)

Mike Lindsay (UltraSystems)

Jack Emerson (UltraSystems)

Tarik Hadj-Hamou (SES)



**SUNSHINE CANYON LANDFILL
MITIGATION MONITORING SITE REPORT**

Monitor: James Aidukas	Page: 1 of 2
Discipline: Project Manager	Date: 9/23/14
Site Conditions: Sunny and hot, ~70°- 90°F, mild wind 10-15 mph	
SITE LOG	
<p>Republic Site Manager - Rob Sherman</p> <p>Met with John Nelson and Karlo Manalo (LACDRW), Mike Lindsay, Tarik Hadj-Hamou, and Jack Emerson (UltraSystems). Signed in and briefly talked with Patti Costa and Achaya Kelapanda to determine general work in progress onsite. All monitors proceeded to the landfill entrance area where winterizing of the access road realignment area was in progress.</p> <p>We observed the following:</p> <ul style="list-style-type: none"> • Some of the slopes were re-graded to control rain runoff and to provide drainage. Two temporary dirt bottom sediment/retention basins were being constructed in the drainage channel between the terminal retention basin and the leachate treatment facility. These basins were going to drain into the terminal basin. A third dirt basin was being graded to provide runoff detention between the terminal basin and San Fernando Road. Steep graded slopes would drain to this area. • Wattles were being placed on the graded bare dirt areas. Adequacy of runoff control could not be verified as no SWPPP was seen by UltraSystems nor County staff. • The oil field access road appeared to have been resurfaced in 2014 near the leachate treatment facility. The slope of the road and the berm (hump) in the road to divert runoff into a channel that discharges into the terminal basin outlet appears to be not properly constructed to divert runoff. Water not diverted will drain to San Fernando Road. <p>We then split into two groups to monitor different areas: John Nelson, Jim Aidukas, and Mike Lindsay to monitor the general site mitigation measures and conditions; Karlo Manalo, Tarik Hadj-Hamou, and Jack Emerson to monitor winterizing and site drain control systems. My group observed the following:</p> <ul style="list-style-type: none"> • The southern perimeter gate south of DCOR's oil operations was closed but not locked. • The oak mitigation trees along the oil field access road near the proposed environmental center location. Some of the trees were showing stress and dieback due to lack of water. Part of the drip irrigation system was not working. • Sierra Highway and San Fernando Road were clean and free of wind-blown litter. There was one broken wooden table dumped near the I-14 overpass on Sierra Highway. • The terminal basin was having the last portion of sediment removed and it appears that it will be ready for rain. • The old City North landfill had wet weather broken asphalt and concrete stockpiled on the top deck. Waste CMP scrap metal was also stockpiled. • It appears that the Deck C sage mitigation area had the irrigation rate decreased and the vegetation was observed to be doing well. • An irrigation supply line had a water leak near the green holding tank on the PM-10 berm. Republic was notified. • Sufficient water was being applied to the landfill surface and no blowing dust was noted. • The new temporary scale facilities appear to be close to completion. 	

Page 2 of 2, 9/23/14

- Met with DTE plant operations personal. All five turbine units were operational. They were producing 22 MW gross with a net sales of 18.2 MW. This is approximately 95% of optimal production. All pre-treatment systems appear to be working as designed. A shutdown is scheduled for October 22nd and 23rd. This will confirm the effectiveness of the pretreatment system.

Flare Operating Conditions:

- Flare 1 - 1695°, 1912 SCFM, -65.2" H₂O vacuum
- Flare 3 - 1705°F, 2800 SCFM, -68.2 to -72.3" H₂O vacuum
- Flare 9 and 10 were not operating.

Inlet to gas blowers was -52" H₂O vacuum with an outlet pressure of 35" going to the gas-to-energy facility.

After the monitoring we met with Patti Costa and Larry Bressman and discussed our observations and were provided with the status of site activities. See September 23rd meeting log for record of discussion.

FURTHER REVIEW NEEDED

1. Observe progress on winterization.
2. Observe condensate treatment facility operation.
3. Observe landfill for use of soil sealant during windy season.
4. Observe oak trees along oil field road.

COMMENTS

Signed: 

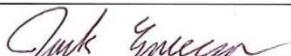


**SUNSHINE CANYON LANDFILL
MITIGATION MONITORING
SITE REPORT**

Monitor: Mike Lindsay	Page <u>1</u> of <u>2</u>
Discipline: Environmental Engineer	Date: <u>Tue. 09-23-14</u>
Site Conditions: <u>Sunny, clear, 69-88°F, 5-15 mph</u>	
SITE LOG	
1. Met with John Nelson, Karlo Marlo (LACOPW), Jim Aidukas, Tarik Hadis-Hamon, Jack Emerson (UltraSystems).	
2. Checked in to office with Parthi Costa, Achya Kelapanda (Republic).	
3. Observed Bypass Road straw wattles being installed to winterize steep slopes.	
4. Perimeter gate at Oil Field was properly closed.	
5. Mitigation area above Oil Field: oak trees on north side of road are wilted, likely due to lack of water. Trees on south side of road have new growth.	
6. Observed sewerline pipes being laid into trench by landfill entrance. A parks monitor was observing excavation.	
7. Sierra Highway and San Fernando Road was overall clean of litter and debris.	
8. Terminal sediment Basin was cleaned, with final piles of soil being removed.	
9. The closed City North Deck is being used to store/stockpile broken asphalt, CMP scrap metal and broken concrete.	
10. City Deck C revegetation area is surviving the summer heat, with salt bush and some sage dominating.	
11. Flare 1 is operating at 1925 SCFM, 1696 °F; gas sample measured at 31% Vol. CH ₄ , 12% Vol. O ₂ , over 100 ppm H ₂ S, 65 ppm CO, and a 144 °F supply temp.	
12. Observed City working face, with tipplers in-use.	
13. Water trucks are applying water throughout landfill.	
14. Observed new temp. scales in-place and overall complete.	
FURTHER REVIEW NEEDED	
15. Flare 3 is operating at 2800 SCFM, 1701 °F; gas sample measured at 39% Vol. CH ₄ , 5.9% Vol. O ₂ , 49 ppm H ₂ S, over 500 ppm CO, and a 141 °F supply temp.	
16. Flare 9 and Flare 10 were off-line.	
17. Gas-to-Energy (GTE) plant regeneration Flare was operating at 177 SCFM, 1497 °F.	
18. Met with GTE plant Operations Manager Rich, and Facility Technician Travis Beck (Sunshine Gas Producers). Received tour of facility and control system, and discussed operations.	
Project Number: 5800	Signed: <u>Rich Lindley</u>



**SUNSHINE CANYON LANDFILL
MITIGATION MONITORING SITE REPORT**


Monitor: Jack Emerson	Page: 1 of 1
Discipline: Civil Engineering	Date: 9/23/14
Site Conditions: ~95°F, mild wind, mild humidity	
SITE LOG	
<p>Field Notes:</p> <ul style="list-style-type: none"> • Met with Jim Aidukas (Ultrasystems), Tarik Hadj-Hamou (SLR), Mike Lindsay (Ultrasystems), Karlo Manalo (LACDPW), and John Nelson (LACDPW). • Signed in at office and met Patti Costa (Republic) and Achaya Kelapanda (Republic). • Observed steep cut slope west of terminal basin. • ~10'x15' of 3-inch deep standing water in an apparent temporary retention basin NW of terminal basin. • Straw wattle erosion control is being installed on slopes west of the entry road. • New temporary weighing station near completion. • Slopes west of new temporary weighing station do not have erosion control. • Channel cracked and spalling between Basin A and Basin D apparently due to soil settlement. • Gas-to-energy facility is operating at 95% maximum production. • Gas from flares 9 & 10 is currently being channeled to the gas-to-energy facility. • "Regen flare" was operating at 178 scfm, 1497°F. <p>Meeting notes:</p> <ul style="list-style-type: none"> • Another monitor witnessed oak trees under apparent distress. <ul style="list-style-type: none"> ◦ Irrigation lines in that area will be checked for functionality and operated. ◦ Discussed understory plants by young oak trees near the PM10 berm. • The Wet Weather Preparedness Plan is due to the Regional Water Quality Control Board on October 1st. <ul style="list-style-type: none"> ◦ It is estimated that 75-80% of all measures will be completed by October 1st. ◦ All measures should be implemented by October 15th, the start of the rainy season. ◦ SWPPP includes straw wattles on all cut slopes and adding matting to some. 	
FURTHER REVIEW NEEDED	
<p>Upon next visit:</p> <ul style="list-style-type: none"> • Wet Weather Plan should be reviewed and all measures should be inspected for completeness. • Distressed oak trees should be revisited to ensure correction measures were sufficient. 	
COMMENTS	
<ul style="list-style-type: none"> • Did not observe abnormal odors during the site visit. • Stormwater preparedness is progressing rapidly. 	
Signed: 	



**SUNSHINE CANYON LANDFILL
MITIGATION MONITORING
SITE REPORT**

Monitor: Tarik Hadj-Hamou, Ph.D., P.E.	PAGE 1 OF 2
Discipline: Civil – Geotechnical and Hydrology	Date: September 23, 2014
Site Conditions: Sunny, hot and windy	
SITE LOG	
9:00 arrive at Sunshine Canyon Landfill ; met with UltraSystems team members Jim Aidukas, Jack Emerson, and Mike Lindsay and prepare for monitoring visit	
9:30 met with John Nelson and Karlo Manalo (LACDPW), (UltraSystems); signed-in at the office	
9:45 - 2:45 site tour	
Observed the following areas: drainage structures , slopes, roads, and work face	
<p>Drainage system</p> <ul style="list-style-type: none"> • Sedimentation basins <ul style="list-style-type: none"> ○ All basins are either clean or in the final stage of cleaning such as the terminal basin at the entrance to the landfill • Channels <ul style="list-style-type: none"> ○ We noted that the conditions of portion on the westside drainage channel between Basin A and Basin D noted in previous visits have not been addressed (Photo 1) ○ We noted a depression in the floor channel in the area aforementioned (Photo 1) • Based on the location of this section of channel at the intersection of a small finger canyon (Photo2) it is possible that this section of the channel is built on fill that has moved a little over the years probably exacerbated due to drying linked to the drought. There is no sign of an eminent failure. 	
<p>Access Road</p> <ul style="list-style-type: none"> • Grading activities for the new access road have stopped • The portion of the slope extending approximately between the leachate treatment plant and the condensate treatment plant has been partially excavated • Winterization of the slopes was on-going during our visit. Wattles were placed on the upper slopes (Photo 3) and lower reaches near the proposed temporary basin (Photo 4). Though we have not reviewed the overall winterization plans, wattles may not be enough to control erosion on the steep slopes extending from the current access road (Photo 5). Of concern is the risk for excessive erosion and sloughing off of material. 	
<p>Oil Field Road to leachate treatment plant</p> <ul style="list-style-type: none"> • Runoff on the road is supposed to be diverted by a asphalt berm into the concrete channel (Photo 6) on the south side of the access road and then drain into the Terminal Basin Outlet through a pipe under the access road. The berm appears to be too low (Photo 7) and will not be able to divert the water into the channel, so some water may sheet flow on to the access road and out of the site. 	
Condensate/Leachate pipes in channel	



<ul style="list-style-type: none"> Numerous pipes are present in the main channel along the access road. Those will reduce the available capacity for flow of water and should be removed (Photo 8)
Top Decks <ul style="list-style-type: none"> There is no clear drainage pattern and there are numerous low spots where water may pond and infiltrate
Stability issues <ul style="list-style-type: none"> No slope stability issues were noted.
FURTHER REVIEW NEEDED
COMMENTS
Signed: 

Appendix IV

Meeting Logs



**SUNSHINE CANYON LANDFILL
CITY & COUNTY SITE MEETING MINUTES
DECK C SAGE MITIGATION**

Monitor: Michelle Tollett

Page: 1 of 2

Discipline: Sr. Biologist

Date: 7/22/2014

Site Conditions: Sunny, hot, 76-97 degrees F, winds 0-1mph

Arrived onsite 8am and signed in at trailers, we met Peggy at the front desk.

Jim Aidukas, John Nelson (LACDPW Inspector) and Michelle Tollett drove in one vehicle. Mike Lindsay drove separately to another onsite location.

- Drove to Sediment Basin A and noted fallen sandstone rock into the basin. Basin appears intact.
- Drove down the west side drainage and observed a dead southern pacific rattlesnake (*Crotalus oreganus helleri*) that was dead from a vehicle strike. It was approximately 4 ½ feet long and had venom dripping from its fangs.
- Inspected the County coastal sage scrub mitigation area. It appears that pioneer species like California buckwheat (*Eriogonum fasciculatum*), a few California sagebrush (*Artemisia californica*) and invasive annual grasses are taking hold in some areas. Ideally, a seed mix and planting should be installed on these steep denuded slopes.
- Inspected the County hillside of intact coastal sage scrub under Flare #8 that may be removed. This area may not be included in the original design plans for removal and is not accounted for in the overall mitigation agreement. This needs to be discussed with the resource agencies prior to removal, unless it was already incorporated into the overall impact acreage calculations. The last rare plant survey on this hillside was 1990, approximately 24 years ago.
- Sediment Basin B was inspected and appears to be intact.
- Visited the methane energy generating facility. Took a tour with the gas-to-energy plant manager. It was very loud and I could not hear almost anything that was discussed. However, it did appear that the site was operational and the engineers were working out the grand opening kinks.
- City Deck C was inspected for planting success and overall conditions. It appears that the Atriplex species are doing well. The *Artemisia californica* may be in summer dormancy. Many of the other species have died back. It appears that the site may be a bit overwatered as noted by mud and surface water at the site. It also appears that the site does not receive water in a balanced way with water pooling in some areas and completely missing other necessary areas, which could explain the high rate of dieback by many species. Suggested watering schedule is 45min 6am and 8pm M W F during the summer for the first year. Once plants are established, the water should be removed completely.
- City Deck A – Flare 1 – Flare 3 were all inspected and appear intact. No issues biologically.
- Flares 9 & 10 were inspected by the engineers
- We stopped in the offices again and met with Achaya Kelapanda, Environmental Manager to discuss findings onsite.
- A plan should be developed and implemented:
 - for improving the County sage mitigation area;
 - for the revegetation of the permanent slope north of Flare #9;
 - and for the revegetation of the temporary and inactive slopes and decks.
- In addition, the Atriplex species on Deck C appear to be quite successful, perhaps due to the high saline soils. If this is the case, we can use documented research to show that CAGN may also nest in these areas. As this project site was never actually “occupied” habitat and the objective is to create “suitable” habitat for the CAGN, it appears we would meet that parameter by 1)

continued installation of coastal sage scrub species - especially pioneer species such as California buckwheat, California sagebrush and encelia 2) installation of halophytic species including Atriplex species to provide shelter and secondarily preferred habitat, which co-occurs in coastal sage scrub communities 3) maintain host plants for main prey species of the CAGN. 4) if necessary, we may bring in prey species of CAGN, 5) if necessary, we may inoculate the soils with local mycorrhizae for optimal health of the CSS community.

- The original approved plant palette may require slight adjustments to meet these objectives. If adjusted, the resource agencies should be notified.
- Removal of the County hillside below Flare 8 should be discussed prior to removal. Items to be reviewed include results of rare plant survey, if this area was accounted for in original grading plans or if new impact, area should be mapped and measured, a species list of area should be made prior to removal. If an additional rare plant survey is necessary, a target species list should be produced and reviewed for bloom periods, which will dictate if the rare plant survey should be a 2 or 3 season visit during 2014-2015.
- A comprehensive mapping of the original vegetation to impacts should be made showing available mitigation areas to date.

Species observed: Side blotch lizard, western fence lizard, CORA, LEGO, SAPH, SCJA

Dominant CSS species: *Eriogonum fasciculatum*, *Encelia farinosa*, *Artemisia californica*, *Salvia apiana*, *Adenostoma fasciculatum*. Chaparral dominants: *Adenostoma fasciculatum*, *Quercus* sp., *Sambucus nigra caerulea*, and *Malosoma laurina*.

Signed: Michelle Tollett



**SUNSHINE CANYON LANDFILL
CITY & COUNTY SITE MEETING MINUTES
DECK C SAGE MITIGATION**

Monitor: Michelle Tollett Page: 1 of 2

Discipline: Sr. Biologist Date: 8/12/2014

Site Conditions: Sunny, hot, 76-97 degrees F, winds 0-1mph

Arrived onsite 10am and signed in at trailers, we met in the part in the north trailer classroom.

Attendees included: Russell Bukoff, Jim Aidukas, Michelle Tollett, Greg (Republic), (Greg Ainsworth absent due to illness), Betsey Landis, and others

I concur with the daily monitoring notes provided by Russell and will not repeat all the details of his report. The summary of the 8/12/2014 visit is as follows:

Republic reiterated that the deadline for submittal of the letter to CDFW requesting approval of the Venturan coastal sage scrub species palatte was to be completed by the 3rd Quarter of 2014, which is the end of August. Republic is reviewing to be sure they will make that deadline. Apparently there were some vacations that caused reports to be late but they are doing their best to get caught up in a hurry.

The pilot project revegetation area at Area C was visited to check on plant growth. The three test areas the highest growth was *Atriplex lentiformis* and *Atriplex canescens*. These species appear to do well with the high saline soils. Republic will review guidance documents and may inquire with the resource agencies to ensure that these specie may be included in the plant palette as acceptable cover.

Michelle Tollett provided Greg a journal article on the use of *Atriplex* species by coastal California gnatcatcher (CAGN). The article summarizes that this is acceptable cover and will be used for nesting. The concern is that *Artemisia californica* and *Eriogonum fasciculatum* are the host plant species for the leafhopper insects that serve as the main prey for the CAGN, an insectivorous bird. Therefore, the next step would be to populate the barren areas with host species of the insects to supply a food base for the CAGN. Republic plans to do this in the fall 2014.

The *Atriplex* spp. were selectively pruned to allow *Encelia* spp. to grow through. It is unlikely that this is actually necessary as the *Encelia* spp. may simply grow beyond the *Atriplex* and provide increased density to the shrub cover. However, it is a worthwhile experiment to determine the best methodology for managing growth of planted species.

Irrigation was also reduced to mimic the natural rainfall regime. It is expected that we may have a high rainfall year and the site will be stabilized to reduce erosion through use of straw wattles and crushed asphalt.

We suggested that before the vegetation is removed at Flare 8, seeds be harvested from the plants, and the plants be used for mulch in other areas of the Landfill. Ensure that the appropriate flora and fauna surveys are completed prior to site disturbance.

Species observed: Side blotch lizard, western fence lizard, TUVU, CORA, LEGO, SCJA

Signed: Michelle Tollett

**Sunshine Canyon Landfill
Meeting Log for September 2014 Site Monitoring**

September 23, 2014

Post-monitoring meeting with Larry Bressman, Republic's Division Manager; Patti Costa, Republic's Environmental Manager

Attendees:

John Nelson, LACDPW
Karlo Manalo, LACDPW
James Aidukas, UltraSystems
Mike Lindsay, UltraSystems
Jack Emerson, UltraSystems
Tarik Hadj-Hamou, SLR/UltraSystems



Discussion:

We had a post-monitoring meeting with Republic and provided them with our monitoring observations and asked questions on site activities and mitigation status and received comments and updates as follows:

- We informed Republic that the oak mitigation trees off the oil field access road had approximately 50% of the trees showing signs of distress due to a lack of water (die-back, and wilting.) It appeared that the north east side of the irrigation system was not working.
 - Patti Costa said that they would investigate the cause of the distress on the trees and make any repairs.
- Jim Aidukas stated that the monitors observe a water leak in an irrigation supply line from the green water holding tank on the PM-10 berm.
 - Patti Costa stated that they will have the irrigation system consultant for the sage mitigation make repairs.
- Jim Aidukas stated that the monitors observed that winterizing was in progress. I asked if there was a plan that was available to see what additional measures would be implemented.
 - Patti Costa said that a SWPPP plan would be submitted to Regional Water Quality on October 1st and that the plan would be completed by October 15th. She stated that the plan included straw wattles on graded slopes, jute netting at the top of steep long graded slopes and three temporary basins at the access road realignment area near the terminal basin. Other surface water control would also be done throughout the landfill.
- Jim Aidukas asked what the status was regarding the Chatsworth wetland mitigation and the Corps of Engineers and California Department of Fish and Wildlife deadlines of December 31, 2014.
 - Patti Costa stated that Republic, Councilman Englander and his staff, a Corps of Engineers representative, and DWP staff met during the week of September 15th and had come up with a solution to the outstanding contractual issue with DWP and the Corps, which was the main issue holding up the mitigation final design and construction. Legal representatives for DWP and the Corps are now reviewing the entitlement language. If found to be satisfactory, the Chatsworth mitigation project will start up again.

- Jim Aidukas asked what is the status for planting in the understory of the oaks on the PM-10 berm.
 - Patti Costa said she was not aware of that planting requirement. Jim Aidukas stated that he would search for the PM-10 drawing showing the City approved planting design and that he would supply copies to Republic.

The meeting was then adjourned.

Appendix V

Landfill GPS Data

INTRODUCTION

During the third quarter of 2014, UltraSystems conducted Global Positioning System (GPS) surveys at the Sunshine Canyon Landfill, located in Sylmar, California. GPS data was collected for the Los Angeles County Top Deck area.

EQUIPMENT USED

A Trimble GeoXH 2008 Series handheld GPS device running TerraSync Professional software was used for the measurements. The device has a horizontal and vertical accuracy of 0.1 meters. The GPS built-in antenna was used with a four-foot vertical offset to compensate for carrying the device. Also, the unit was kept ten feet away from any materials that could have an effect on satellite signal reception (e.g. metal within well heads).

MEASUREMENT LOCATIONS

Transect lines were walked for elevation data along natural contours, ridge lines, break points and high/ low areas. For reference purposes, several gas well locations were measured multiple times, each on a different survey date. This helped to verify data consistency. Also, previous transect lines were navigated on the County Top Deck so elevation comparisons could be made.

MEASUREMENT RESULTS

For this reporting period, elevation measurements showed a slight decrease in stockpiled soil on the County Top Deck. For the County Top Deck area, the average elevation was 1,867.7 feet above mean sea level. The average change in elevation for this same area was -0.1 feet (see GPS Elevation Data Table, Appendix V).

Also, many of the County Top Deck landfill gas extraction wells were measured for location and elevation, and compared to the final grading plan contour map (base map source: Sunshine Canyon Landfill JTD 2007 Final Grading Plan, BAS).

GPS Data Logs

July 22, 2014

County Top Deck Elevation Measurements

Performed by:

Mike Lindsay, UltraSystems (see GPS Elevation Map and Data Table)

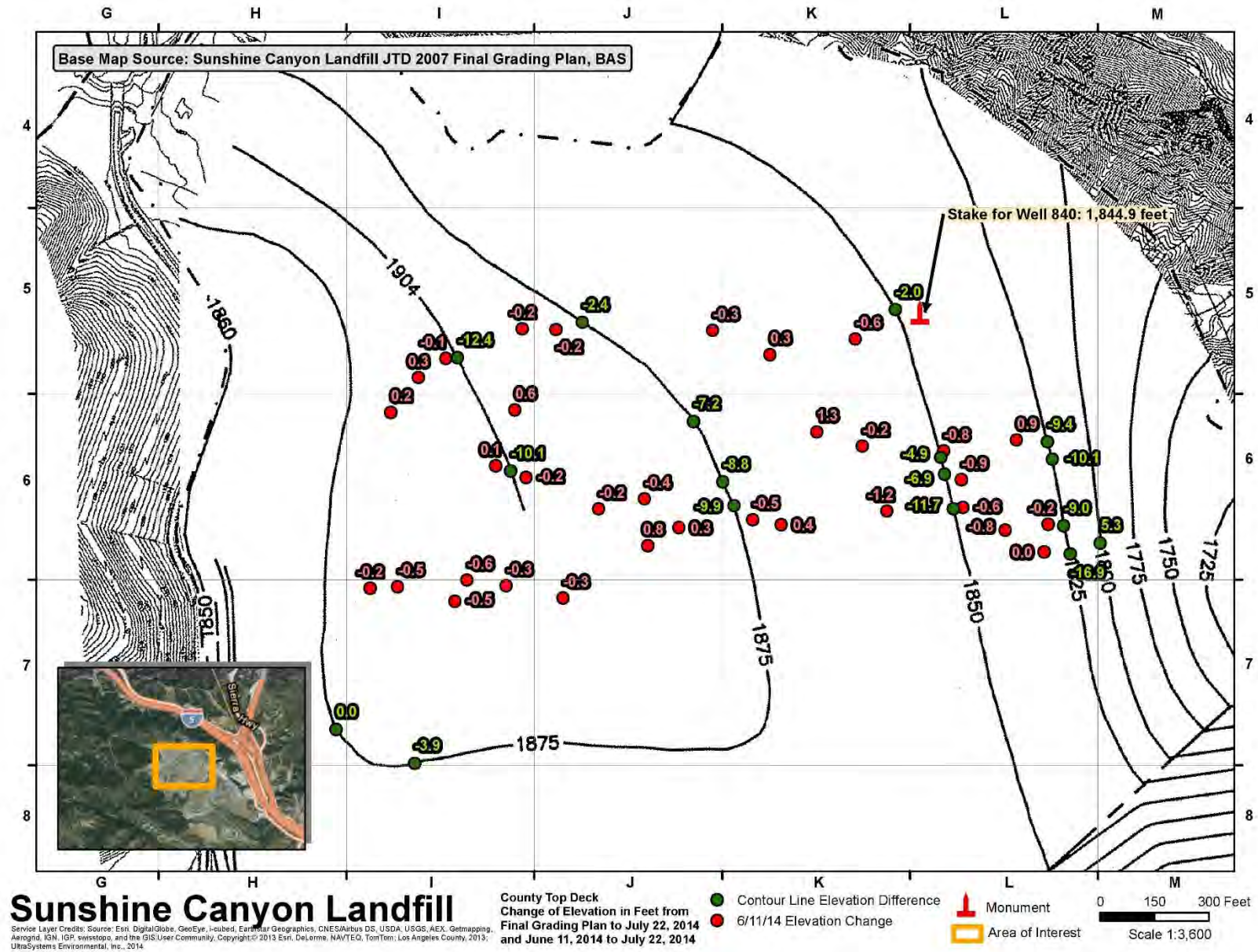
August 14, 2014

County Top Deck Well Location and Elevation Measurements

Performed by:

Mike Lindsay, UltraSystems (see GPS Elevation Map)

GPS Maps



GPS Elevation Data Tables

SCL – Elevation Comparison of June 11, 2014 and July 22, 2014 Surveys (feet)

Map Grid	GPS Survey Date	Elevation	GPS Survey Date	Elevation	Elevation Difference Jun 11 / Jul 22
I7	06-11-2014	1884.9	07-22-2014	1884.4	-0.5
I7	06-11-2014	1889.7	07-22-2014	1889.3	-0.5
I7	06-11-2014	1888.2	07-22-2014	1887.8	-0.3
I7	06-11-2014	1889.2	07-22-2014	1888.6	-0.6
I7	06-11-2014	1882.3	07-22-2014	1882.0	-0.2
J7	06-11-2014	1888.8	07-22-2014	1888.5	-0.3
I6	06-11-2014	1892.2	07-22-2014	1892.3	0.1
I6	06-11-2014	1892.6	07-22-2014	1892.4	-0.2
I6	06-11-2014	1888.4	07-22-2014	1889.0	0.6
I6	06-11-2014	1883.1	07-22-2014	1883.4	0.2
J6	06-11-2014	1881.7	07-22-2014	1882.5	0.8
J6	06-11-2014	1876.2	07-22-2014	1876.5	0.3
J6	06-11-2014	1882.0	07-22-2014	1881.6	-0.4
J6	06-11-2014	1890.2	07-22-2014	1890.1	-0.2
K6	06-11-2014	1859.7	07-22-2014	1859.2	-0.5
K6	06-11-2014	1856.6	07-22-2014	1856.9	0.4
K6	06-11-2014	1844.2	07-22-2014	1843.0	-1.2
K6	06-11-2014	1851.5	07-22-2014	1851.3	-0.2
K6	06-11-2014	1856.2	07-22-2014	1857.5	1.3
L6	06-11-2014	1839.1	07-22-2014	1838.5	-0.6
L6	06-11-2014	1832.6	07-22-2014	1831.7	-0.8
L6	06-11-2014	1823.7	07-22-2014	1823.7	0
L6	06-11-2014	1824.1	07-22-2014	1823.9	-0.2
L6	06-11-2014	1841.5	07-22-2014	1840.7	-0.9

Map Grid	GPS Survey Date	Elevation	GPS Survey Date	Elevation	Elevation Difference Jun 11 / Jul 22
L6	06-11-2014	1845.8	07-22-2014	1845.0	-0.8
L6	06-11-2014	1829.0	07-22-2014	1829.9	0.9
I5	06-11-2014	1886.1	07-22-2014	1885.9	-0.2
I5	06-11-2014	1891.2	07-22-2014	1891.1	-0.1
I5	06-11-2014	1887.3	07-22-2014	1887.6	0.3
J5	06-11-2014	1865.9	07-22-2014	1865.6	-0.3
J5	06-11-2014	1877.6	07-22-2014	1877.4	-0.2
K5	06-11-2014	1855.2	07-22-2014	1854.7	-0.6
K5	06-11-2014	1860.5	07-22-2014	1860.8	0.3
I7	06-11-2014	1884.9	07-22-2014	1884.4	-0.5
I7	06-11-2014	1889.7	07-22-2014	1889.3	-0.5
I7	06-11-2014	1888.2	07-22-2014	1887.8	-0.3
I7	06-11-2014	1889.2	07-22-2014	1888.6	-0.6
I7	06-11-2014	1882.3	07-22-2014	1882.0	-0.2
J7	06-11-2014	1888.8	07-22-2014	1888.5	-0.3
I6	06-11-2014	1892.2	07-22-2014	1892.3	0.1
I6	06-11-2014	1892.6	07-22-2014	1892.4	-0.2
I6	06-11-2014	1888.4	07-22-2014	1889.0	0.6
I6	06-11-2014	1883.1	07-22-2014	1883.4	0.2
J6	06-11-2014	1881.7	07-22-2014	1882.5	0.8
	06-11-2014	1867.8 (Average)	07-22-2014	1867.7 (Average)	-0.1 (Average)