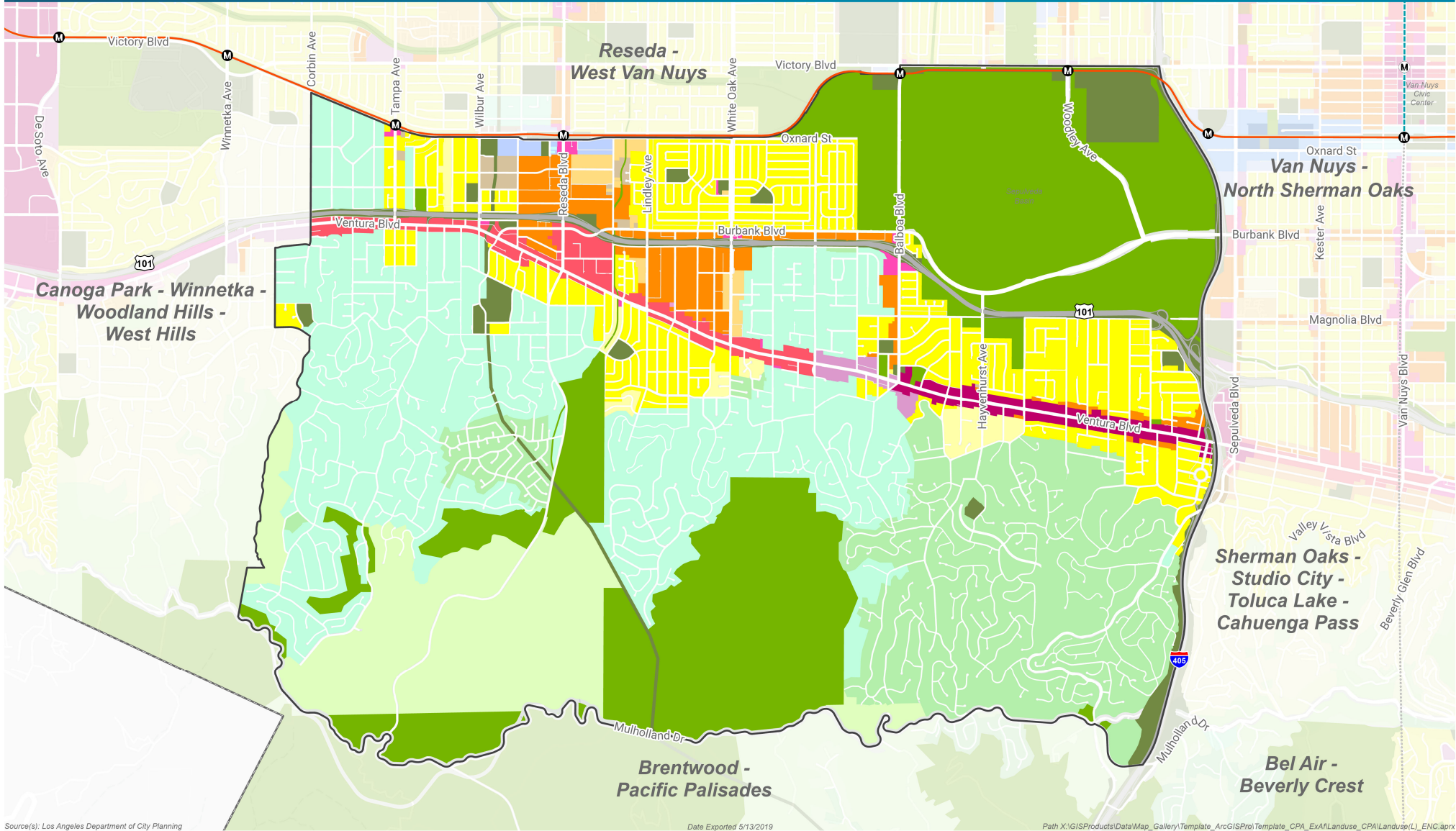


# General Plan Land Use

## Encino - Tarzana Community Plan Area



Source(s): Los Angeles Department of City Planning

Date Exported 5/13/2019

Path X:\GISProducts\Data\Map\_Gallery\Template\_ArcGISPro\Template\_CPA\_EXA\Landuse\_CPA\Landuse(L)\_ENC.aprx

- |  |             |  |                         |  |                                |  |                              |
|--|-------------|--|-------------------------|--|--------------------------------|--|------------------------------|
|  | Minimum     |  | Low Medium I            |  | Neighborhood Office Commercial |  | Public Facilities            |
|  | Very Low I  |  | Low Medium II           |  | Regional Center Commercial     |  | Public Facilities - Freeways |
|  | Very Low II |  | Medium                  |  | Regional Commercial            |  | Community Plan Boundary      |
|  | Low         |  | General Commercial      |  | Commercial Manufacturing       |  | City Boundary                |
|  | Low I       |  | Community Commercial    |  | Limited Manufacturing          |  |                              |
|  | Low II      |  | Neighborhood Commercial |  | Open Space                     |  |                              |

