

# APPENDIX H

---

Noise Measurement Data

**15-Minute Noise Measurement Datasheet**

**Project:** Barlow Skilled Nursing Facility ( SNF ), Los Angeles    **Site Observations:**  
**Site Address/Location:** 2000 Stadium Way, Los Angeles, CA 90026  
**Date:** 2/8/2022  
**Field Tech/Engineer:** Ian Edward Gallagher

Main noise sources are from vehicular traffic travelling along Stadium Way , Scott Ave & other surrounding roads . The local buildings reflect & refract much of the sound. Other noise sources include bird song, the hum of outside airconditioner units, hospital staff and grounds keepers going about their business. Occasional low altitude aircraft, both fixed wing & helicopters passing overhead. Leaf rustle from nearby trees, palmtrees & other vegetation due to 3-5 mph breeze.

**General Location:** 2000 Stadium Way, Los Angeles, CA 90026

**Site Topo:** Park like, hospital, open land, trees. Residential W, stadium parking to the SE.

**Sound Meter:** Larson Davis Sound Track LxT1                      **SN:** 3099

**Ground Type:** Park like site conditions, acoustically refractive, reflective & absorptive.

**Settings:** A-weighted, slow, 1-min, 15-minute interval

**Meteorological Con.:** 80 deg F, 3-5 mph wind, 10% humidity, clear skies, sunshine.

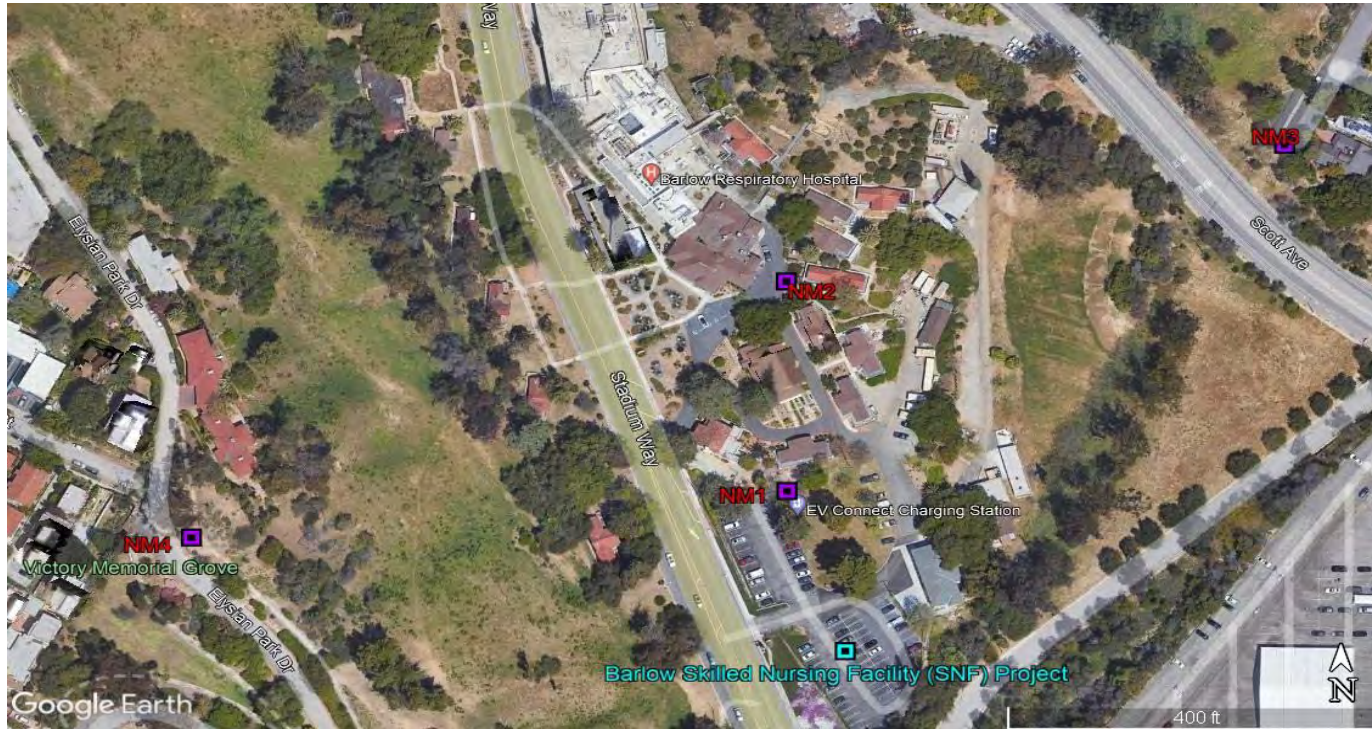
**Site ID:** NM-1 , 2, 3 & 4.

**NM locations, latitude , longitude :**

NM1 Meter: 34° 4'28.76"N 118°14'51.66"W                      NM3 Meter: 34° 4'32.94"N 118°14'45.42"W

NM2 Meter: 34° 4'31.29"N 118°14'51.67"W                      NM4 Meter: 34° 4'28.20"N 118°14'59.13"W

**Figure 1: Monitoring Locations**



15-Minute Noise Measurement Datasheet - Cont.

Project: Barlow Skilled Nursing Facility ( SNF ), Los Angeles  
 Site Address/Location: 2000 Stadium Way, Los Angeles, CA 90026  
 Site ID: NM-1 , 2, 3 & 4.

Figure 2: NM1 Photo



NM1 looking NW towards a small koi pond ( 10 yards) and what looks like a hospital chappel ( 20 yards). Beyond that we have Stadium Way, 89 vehicles passed microphone travelling along Stadium Way during measurement. On the other side ( W side ) of Stadium Way are what looks like unoccupied residences.

Figure 3: NM2 Photo



NM2 looking WNW towards hospita; cafeteria. Stadium Way is on the left, 88 vehicles travelled along Stadium Way during 15 minute measurement

**15-Minute Noise Measurement Datasheet - Cont.**

**Project:** Barlow Skilled Nursing Facility ( SNF ), Los Angeles  
**Site Address/Location:** 2000 Stadium Way, Los Angeles, CA 90026  
**Site ID:** NM-1 , 2, 3 & 4.

**Figure 4: NM3 Photo**



NM3 looking E towards front yard of residence 1448 N Boylston Street, Los Angeles.

**Figure 5: NM4 Photo**



NM4 looking SSE along Victory Memorial Grove, WWI memorial 6 yards SSE of microphone. Road, Elysian Park Drive on the right.

**15-Minute Noise Measurement Datasheet - Cont.**

**Project:** Barlow Skilled Nursing Facility ( SNF ), Los Angeles  
**Site Address/Location:** 2000 Stadium Way, Los Angeles, CA 90026  
**Site ID:** NM-1 , 2, 3 & 4.

**Table 1: Noise Measurement Summary**

Location	Start	Stop	Leq/ dB	Lmax/ dB	Lmin/ dB	L2/ dB	L8/ dB	L25/ dB	L50/ dB	L90/ dB
NM 1	1:42 PM	1:57 PM	49.7	59.9	39.3	56.5	53.8	51.0	47.3	40.9
NM 2	2:22 PM	2:37 PM	47.4	57.4	41.2	52.9	50.8	48.2	45.7	42.7
NM 3	3:11 PM	3:26 PM	55.4	76.3	41.0	64.3	54.0	48.4	46.9	44.0
NM 4	3:58 PM	4:13 PM	50.0	60.8	44.1	57.3	53.8	49.3	47.9	46.1

NM1\_KWAQON Barlow Skilled Nursing Facility, Los Angeles.

Raw Data

Table with columns: Record #, Record Type, Date, Time, LAeq, LZpeak, LASmax, LASmin, Int. Temp (°F), LCEq-LAEq, 1/1 LZeQ 8.0, 1/1 LZeQ 16.0, 1/1 LZeQ 31.5, 1/1 LZeQ 63.0, 1/1 LZeQ 125, 1/1 LZeQ 250, 1/1 LZeQ 500, 1/1 LZeQ 1000, 1/1 LZeQ 2000. Rows include Calibration Change and Run events from 2/8/2022 1:41:19 PM to 1:57:02 PM.

NM2\_KWAQON Barlow Skilled Nursing Facility, Los Angeles.

Raw Data

Table with columns: Record #, Record Type, Date, Time, LAeq, LZpeak, LASmax, LASmin, Int. Temp (°F), LCEq-LAEq, 1/1 LZeQ 8.0, 1/1 LZeQ 16.0, 1/1 LZeQ 31.5, 1/1 LZeQ 63.0, 1/1 LZeQ 125, 1/1 LZeQ 250, 1/1 LZeQ 500, 1/1 LZeQ 1000, 1/1 LZeQ 2000. Rows include Run events from 2/8/2022 2:22:23 PM to 2:37:23 PM.

NM3\_KWAQON Barlow Skilled Nursing Facility, Los Angeles.

Raw Data

Table with columns: Record #, Record Type, Date, Time, LAeq, LZpeak, LASmax, LASmin, Int. Temp (°F), LCEq-LAEq, 1/1 LZeQ 8.0, 1/1 LZeQ 16.0, 1/1 LZeQ 31.5, 1/1 LZeQ 63.0, 1/1 LZeQ 125, 1/1 LZeQ 250, 1/1 LZeQ 500, 1/1 LZeQ 1000, 1/1 LZeQ 2000. Rows include Calibration Change and Run events from 2/8/2022 3:10:23 PM to 3:26:42 PM.

NM4\_KWAQON Barlow Skilled Nursing Facility, Los Angeles.

Raw Data

Table with columns: Record #, Record Type, Date, Time, LAeq, LZpeak, LASmax, LASmin, Int. Temp (°F), LCEq-LAEq, 1/1 LZeQ 8.0, 1/1 LZeQ 16.0, 1/1 LZeQ 31.5, 1/1 LZeQ 63.0, 1/1 LZeQ 125, 1/1 LZeQ 250, 1/1 LZeQ 500, 1/1 LZeQ 1000, 1/1 LZeQ 2000. Rows include Calibration Change and Run events from 2/8/2022 3:57:02 PM to 4:13:19 PM.

NM1\_KWAQN Barlow Skilled Nursing Facility, Los Angeles.

Raw Data

Table with 14 columns representing different LZeQ and LZSmax values and 14 rows of data points for NM1.

NM2\_KWAQN Barlow Skilled Nursing Facility, Los Angeles.

Raw Data

Table with 14 columns representing different LZeQ and LZSmax values and 14 rows of data points for NM2.

NM3\_KWAQN Barlow Skilled Nursing Facility, Los Angeles.

Raw Data

Table with 14 columns representing different LZeQ and LZSmax values and 14 rows of data points for NM3.

NM4\_KWAQN Barlow Skilled Nursing Facility, Los Angeles.

Raw Data

Table with 14 columns representing different LZeQ and LZSmax values and 14 rows of data points for NM4.

NM1\_KWAQN Barlow Skilled Nursing Facility, Los Angeles.

Raw Data

1/1 LZSmax 8000	1/1 LZSmax 16000	1/1 LZSmin 8.0	1/1 LZSmin 16.0	1/1 LZSmin 31.5	1/1 LZSmin 63.0	1/1 LZSmin 125	1/1 LZSmin 250	1/1 LZSmin 500	1/1 LZSmin 1000	1/1 LZSmin 2000	1/1 LZSmin 4000	1/1 LZSmin 8000
37.3	31.9	45.3	49.9	60.7	50.9	45.7	33.2	34.7	31	31	30.3	23.8
37.2	31.4	45.2	49.9	60.2	51.5	45.7	33.7	34.4	32.7	32.3	30.6	23.2
27.5	21.1	44.1	49	60.9	51.4	46.3	33	34.8	32.4	31.5	29.7	22.7
35	24.1	47.6	51.5	61.3	53.8	49	40.1	38.5	38.2	34.2	28.8	20.6
32.1	26.1	48.9	51.4	61.2	52.8	50.1	40.7	34.6	32.7	32.4	32	24
29.2	23.9	58.3	55.8	61.5	53	48	36.4	33.1	30.8	31	30.9	23.6
35.6	24.9	45.9	51.1	61.5	53.8	50.7	43.8	37	35	32.6	31.1	24.1
30.2	20.5	44.4	49.6	61.4	53.8	50.2	40.4	36.4	37.7	33.7	30.2	22.6
32.6	24.6	44.6	51	56.8	53.5	48.9	37.4	34.3	33.3	31.9	29.9	23.2
31.8	27.4	48.2	51.4	57	51.9	47.1	37.6	38.8	44.1	39	31.1	23.2
29.9	19.6	45.9	50	55.6	51.3	46.6	34.8	33.5	32.6	30.8	29.5	22.9
35.2	26.1	46.1	50.8	56.6	51.7	48.8	41	34.5	32.3	30.9	29.5	22.2
41.4	27.2	45	51	54.5	52.4	47.3	37.3	35.2	33.2	31.1	29	22.2
43.1	36.6	43.8	51.1	53.7	52.3	47.7	36.5	35.4	34.6	31.9	29.1	22.3
32.2	22.1	45.4	50.8	53.3	52.6	50.1	40.2	38.1	35.9	34	28.8	21.9
25.1	19.5	50.2	57.4	57.2	57.3	54.6	48.3	45.6	48.1	42.4	33	23.7

NM2\_KWAQN Barlow Skilled Nursing Facility, Los Angeles.

Raw Data

1/1 LZSmax 8000	1/1 LZSmax 16000	1/1 LZSmin 8.0	1/1 LZSmin 16.0	1/1 LZSmin 31.5	1/1 LZSmin 63.0	1/1 LZSmin 125	1/1 LZSmin 250	1/1 LZSmin 500	1/1 LZSmin 1000	1/1 LZSmin 2000	1/1 LZSmin 4000	1/1 LZSmin 8000
30.3	21.1	48.8	54.3	58.9	55.9	53.4	42.2	38.7	36.1	32.2	25	15.6
25.5	17.5	48.2	53	58.6	54.8	52.7	41.1	37.4	33.7	27.8	22.3	14.5
30.1	22.4	48.5	54	58	54.5	52.4	41.5	37.5	33.9	28	22	14.8
25.9	19	48.6	54	59	55.1	52.9	42.3	37.9	35.5	28.6	21.8	14.8
25.5	17.4	48.4	54	58	55.7	52.3	42.3	37.6	35.5	29.9	23.3	15
26.2	21.9	47.1	54	58.9	54.8	53.4	42.1	38.6	36	29.2	22.6	15.2
23	16.5	49.2	53.6	59.7	55.3	53.2	42.8	39.4	37.8	30	23.6	15.6
33.8	25	48.2	54.3	58.9	55.6	53.3	42.6	38.7	35.8	29.4	23.6	15.5
28.2	16.8	51	54.7	59	55.5	52.3	43.7	39.3	36.7	29.8	24.2	16
20.8	16.7	48.7	54.7	59.5	55.8	52.4	43.5	38.9	36.5	29.5	23.2	15.3
23.1	17.8	50.4	54.2	58.2	55.7	51.9	43.2	38.5	37	30.5	22.8	15.3
29.3	20.1	49	54.5	60	55.2	52.6	43.3	38.7	37	30.3	25.5	18.2
23.8	17.6	48.2	54.4	60	55	52.4	43.5	38.8	37.8	31.8	25.9	17.5
34.1	27.6	50.4	54.7	58	56.4	53.3	45	39.4	38.3	32.7	24.5	17.1
36.5	29.9	50	55.1	59.6	55.7	53.2	45	39.1	36.5	29.3	23.7	15.1
22.4	16.3	50.4	53.8	59	56.2	52.6	44	38.9	36.4	29.3	23.5	15.1

NM3\_KWAQN Barlow Skilled Nursing Facility, Los Angeles.

Raw Data

1/1 LZSmax 8000	1/1 LZSmax 16000	1/1 LZSmin 8.0	1/1 LZSmin 16.0	1/1 LZSmin 31.5	1/1 LZSmin 63.0	1/1 LZSmin 125	1/1 LZSmin 250	1/1 LZSmin 500	1/1 LZSmin 1000	1/1 LZSmin 2000	1/1 LZSmin 4000	1/1 LZSmin 8000
28	18	55.2	52.7	51.5	50.8	48.5	41.8	41	39.5	31.7	22.6	16.9
30.8	23.2	46.6	50.8	51	50.2	47.1	40.7	40.3	39	30.7	21.9	16.1
31.8	28	49.6	50.3	51.2	50.7	47.1	41.8	41	38.9	31.1	23.7	17.8
33.9	27.1	51.5	51	51.1	50.5	47.7	42.2	39.3	36.7	29.4	25.3	17.4
28.3	23.5	54.2	52.4	51.5	51.6	49.5	42.9	40.7	37.9	30.6	23	16.9
35.6	30.9	46.2	53.3	53.4	50.7	53.7	43.1	41.6	38	28.8	23.1	16
30	23.8	55.8	53.4	52.6	50.9	53.4	44.1	40.9	38.1	29.6	20.5	15.7
27.3	21.7	52.4	52.1	53.4	51.8	48.7	45.5	43.3	37.8	30.1	20.7	14.8
23.3	16	49.6	50.7	51.3	50.4	47.1	42.2	39.7	36.7	27	20.6	15.2
28.3	21.4	49.6	50.1	50.9	50.8	47.9	41.4	40.7	36.7	27.2	22.5	16.2
33.5	24.9	47.1	51.7	53.2	51.4	48.1	43.2	42.1	38.8	28.9	22.3	17.1
34.3	25.7	48.1	50.4	51.3	49.7	46.3	40.1	40	35.2	26.3	19.7	15.1
29.3	19.7	50.5	51.4	51.8	51.3	48.2	42.2	39.9	36.8	29.1	23.6	17.2
25.1	19.1	52.9	50.4	54.3	51.2	48	41.5	40.2	38.1	29.9	22.8	16.6
30.2	21	52.3	51.1	53.9	50.6	47.4	41.9	41.9	39.4	29.5	21.3	15.2
26	15.8	52.2	51.2	53.3	51.4	47.7	41.4	42.8	38.7	29.6	21.3	14.3

NM4\_KWAQN Barlow Skilled Nursing Facility, Los Angeles.

Raw Data

1/1 LZSmax 8000	1/1 LZSmax 16000	1/1 LZSmin 8.0	1/1 LZSmin 16.0	1/1 LZSmin 31.5	1/1 LZSmin 63.0	1/1 LZSmin 125	1/1 LZSmin 250	1/1 LZSmin 500	1/1 LZSmin 1000	1/1 LZSmin 2000	1/1 LZSmin 4000	1/1 LZSmin 8000
33.2	26.1	59.4	56.8	57.7	59.7	56.1	46.5	44.2	41.8	32.4	21.7	18.7
35.8	33.4	58.1	61.6	57.2	57.1	52.6	47.3	43.6	41	32.5	23.5	19.8
35.2	26.8	61	59.3	56.3	56.1	50.9	44.6	42	38.4	29	21.3	18.1
30.6	28.3	51.5	60.8	56.2	55.9	53.8	45.2	43	40.4	31.9	21.6	19.9
32.6	27.6	54.3	55.8	54.3	54.9	50.7	44.6	42.8	39.9	31.4	22.6	18.8
29.3	27.1	57.1	55.4	54.3	55	49.8	43	42.4	39.7	30.3	21.4	14.6
34.4	26.1	59.2	56.8	55.3	55.1	50.9	45.1	43.1	40	31.3	20.4	14.5
41.3	29.5	56.9	55.2	55.2	55.5	52.1	45.3	42.9	41.4	32.6	21	16.5
32.3	23.7	57.6	59.1	56.5	54.1	50.6	43.6	42.2	40.8	31.7	19.6	14.9
38.4	31.4	57.3	55	55	54.1	50.5	44.6	42.8	38.9	29.5	22	16.5
31.8	23.8	53.2	58.2	54.8	53.6	51.3	44.1	41.9	39.2	29.3	20.5	15.7
40.5	29.4	52.2	53.9	55.2	54.4	50.1	44.8	43.6	41.5	31.6	23.2	21.8
34	30.3	50.6	55.3	53.9	50.1	45.4	43.5	41.3	41.3	31.4	19	17.2
27.3	25.7	53.4	56.4	54	54.8	49.6	44.7	44	40.4	30.1	19.3	14.4
25.4	23.5	51.5	52.1	54.4	55	49.8	45	43.2	41.3	30.9	18.2	13.2
22.2	19.1	51.4	56.8	55	56.4	52.1	47.3	48.7	43.2	32.8	19.3	16



NM1\_KWAQON Barlow Skilled Nursing Facility, Los Angeles.

Raw Data

Table with 15 columns (1/1 LZSmin 16000, 1/3 LZeq 6.3, 1/3 LZeq 8.0, 1/3 LZeq 10.0, 1/3 LZeq 12.5, 1/3 LZeq 16.0, 1/3 LZeq 20.0, 1/3 LZeq 25.0, 1/3 LZeq 31.5, 1/3 LZeq 40.0, 1/3 LZeq 50.0, 1/3 LZeq 63.0, 1/3 LZeq 80.0, 1/3 LZeq 100, 1/3 LZeq 125) and 20 rows of numerical data.

NM2\_KWAQON Barlow Skilled Nursing Facility, Los Angeles.

Raw Data

Table with 15 columns (1/1 LZSmin 16000, 1/3 LZeq 6.3, 1/3 LZeq 8.0, 1/3 LZeq 10.0, 1/3 LZeq 12.5, 1/3 LZeq 16.0, 1/3 LZeq 20.0, 1/3 LZeq 25.0, 1/3 LZeq 31.5, 1/3 LZeq 40.0, 1/3 LZeq 50.0, 1/3 LZeq 63.0, 1/3 LZeq 80.0, 1/3 LZeq 100, 1/3 LZeq 125) and 20 rows of numerical data.

NM3\_KWAQON Barlow Skilled Nursing Facility, Los Angeles.

Raw Data

Table with 15 columns (1/1 LZSmin 16000, 1/3 LZeq 6.3, 1/3 LZeq 8.0, 1/3 LZeq 10.0, 1/3 LZeq 12.5, 1/3 LZeq 16.0, 1/3 LZeq 20.0, 1/3 LZeq 25.0, 1/3 LZeq 31.5, 1/3 LZeq 40.0, 1/3 LZeq 50.0, 1/3 LZeq 63.0, 1/3 LZeq 80.0, 1/3 LZeq 100, 1/3 LZeq 125) and 20 rows of numerical data.

NM4\_KWAQON Barlow Skilled Nursing Facility, Los Angeles.

Raw Data

Table with 15 columns (1/1 LZSmin 16000, 1/3 LZeq 6.3, 1/3 LZeq 8.0, 1/3 LZeq 10.0, 1/3 LZeq 12.5, 1/3 LZeq 16.0, 1/3 LZeq 20.0, 1/3 LZeq 25.0, 1/3 LZeq 31.5, 1/3 LZeq 40.0, 1/3 LZeq 50.0, 1/3 LZeq 63.0, 1/3 LZeq 80.0, 1/3 LZeq 100, 1/3 LZeq 125) and 20 rows of numerical data.

NM1 KWAQN Barlow Skilled Nursing Facility, Los Angeles.

Raw Data

1/3 LZeQ 160 1/3 LZeQ 200 1/3 LZeQ 250 1/3 LZeQ 315 1/3 LZeQ 400 1/3 LZeQ 500 1/3 LZeQ 630 1/3 LZeQ 800 1/3 LZeQ 1000 1/3 LZeQ 1250 1/3 LZeQ 1600 1/3 LZeQ 2000 1/3 LZeQ 2500 1/3 LZeQ 3150 1/3 LZeQ +1/3 LZeQ!

38.4	34.1	34.6	31.5	34	35.6	36.7	36.7	37.6	36.3	34.5	31.8	30.2	29.9	28.3	26.1
38.8	36.5	37.2	35.8	35.9	36.9	39	40.9	41.9	41.5	40.2	37	33.4	30.7	29.5	27.3
39.3	35.8	35.5	33.8	35.2	35.7	39	40.8	42.2	40.8	39.9	36.2	32.4	29.8	27.4	24.3
44.5	41.5	41.1	37.3	37.6	38.2	41.2	42.6	42.4	42.2	40	35.9	32.5	30.4	28.9	28
47.6	43.5	41.7	37.6	36.8	38.4	40.2	43.9	43.9	42.2	40.3	36.7	33	32	31.3	28.4
46.7	44.2	40.2	35.4	36.7	39	40	41.2	40.8	41.1	39.2	35.2	31.4	30.3	30.5	27.2
46.4	46.4	43.8	40.6	39.1	39	41.4	43.2	43.9	42.9	41.4	37.9	34.1	31.7	30.5	27.2
46.8	43.9	40.7	38.3	38	38.4	40.5	42.4	43.1	42.4	41.5	38.2	34.1	30.9	29.2	26.4
45.5	45.2	43.6	41.1	40.9	40	42.5	44.5	44.3	42.4	40.7	37	33.4	31.1	29.1	26.1
45.4	43.5	42.4	43.4	41.6	43.2	45.6	46.3	46.1	44.9	42.9	39.4	35.3	31.9	29	25.5
40.4	39.4	36.3	35.9	34.9	39.5	39.6	40.8	41.1	38.9	36.3	32.3	29.8	28.3	27.1	24
50.4	45.9	43.9	39.3	33.3	29.3	33.7	29.2	28.1	30.5	29.3	28	28.3	28.5	27.4	24.8
47.2	43.3	39.6	38.2	37.4	37.9	40.4	41.3	42.5	41.2	39.3	36.4	33	30.5	29.1	26.8
41.4	39.6	38.2	36	34.4	35.2	38.3	39.8	40.9	39.8	38.5	35.2	31.9	30	28.1	26.1
47.8	45.8	43.4	40.7	37.7	36.5	39.2	40.2	41.4	41.1	39.2	35.5	32.5	30.1	27.1	24.2
48.8	46.3	41.5	40.2	39.2	44	41.8	44.1	44.2	43.7	41.6	37.7	34	31.6	28.3	24.5

NM2 KWAQN Barlow Skilled Nursing Facility, Los Angeles.

Raw Data

1/3 LZeQ 160 1/3 LZeQ 200 1/3 LZeQ 250 1/3 LZeQ 315 1/3 LZeQ 400 1/3 LZeQ 500 1/3 LZeQ 630 1/3 LZeQ 800 1/3 LZeQ 1000 1/3 LZeQ 1250 1/3 LZeQ 1600 1/3 LZeQ 2000 1/3 LZeQ 2500 1/3 LZeQ 3150 1/3 LZeQ +1/3 LZeQ!

43.2	41.9	43	39.1	38	36.5	37.9	38.9	38.3	37.9	36	35.4	33.7	30	26.5	22.1
38.2	37.1	39.9	36.7	36.4	33.9	35.5	37	37.2	35.4	33.3	29.5	26	22.8	21.2	17.3
38.2	37	40.2	36.7	36.5	34.5	35.8	36.6	36.3	34.9	32.6	26.7	24.2	22.4	19.3	
46.4	41.8	43.3	39	38.7	40.4	41	41.5	40.7	38.4	35.8	31.1	26.9	22.9	20	16.8
40.7	40.2	41.6	37.4	36.5	33.6	34.5	35	35.2	34	31.6	28.1	24.1	22	24	20.4
43.8	43.6	44.7	41.3	39.6	38.1	39.7	40	38.9	37.4	35.3	30.7	26.1	23.2	23.4	20.1
41.4	38.9	42.1	38.9	38	37.6	39	40	39.3	38	35.3	30.6	27.3	24.6	23.7	20.7
42.3	40.4	43.8	40.5	39.2	38.9	40.8	39.7	39.2	38.7	37.3	36.2	34.9	32.7	28.9	26.5
39.2	40.1	42.6	38.6	37.8	36.8	38	38.4	38.2	36.9	34.7	30.9	28.1	25.1	22.8	18.8
45	40.5	44.4	38.9	38.1	38.6	41.8	41.5	41.2	39.3	36.6	31.9	27.7	24	21.2	17.2
37.7	38	42.5	36.8	36.4	34.1	36.2	36.6	36.8	35.5	33.3	29.3	25.4	22.6	22.3	18.9
41.4	39.9	42	39.1	37.7	37	38.9	40.2	39.2	37.6	34.8	30.4	27.4	26	23.5	23.9
44.8	41.7	42.4	40.6	38.3	36.7	38.3	39.2	38.7	37	34.2	30.5	27.4	25.9	23.1	20.1
41.3	44.2	43.6	40.5	41.7	40.1	39.2	39	39.5	38.8	37.2	34	30.6	30.6	28.2	26.1
47.6	42.3	47.7	42	40.8	39	40.9	41.9	41.5	40	37.8	33.7	30	26.8	24.5	21.7
45.2	39	42.9	37.4	36.3	34.7	36.5	36.6	36.2	35.1	32.4	29	25.4	23.2	21	16.7

NM3 KWAQN Barlow Skilled Nursing Facility, Los Angeles.

Raw Data

1/3 LZeQ 160 1/3 LZeQ 200 1/3 LZeQ 250 1/3 LZeQ 315 1/3 LZeQ 400 1/3 LZeQ 500 1/3 LZeQ 630 1/3 LZeQ 800 1/3 LZeQ 1000 1/3 LZeQ 1250 1/3 LZeQ 1600 1/3 LZeQ 2000 1/3 LZeQ 2500 1/3 LZeQ 3150 1/3 LZeQ +1/3 LZeQ!

42.5	38	38.8	38.1	37.4	37.2	37.3	37.1	36.7	35.3	32.3	28.3	25.3	23.5	22.1	19.9
42.5	38.6	40.1	41.6	42.5	40.1	39.4	38.6	38.6	36.1	32.3	29.3	26.8	26	25.5	23.2
42.4	39.4	39.1	39.2	39.1	37.8	38.4	38.1	38.3	36.7	33.7	30.5	28.1	26.6	25.6	23.7
43.7	38.7	38.7	39.7	40.2	39.2	39.3	39.6	39.2	36.2	32.7	28.8	25.9	25.7	25.1	22.3
44.8	42	42.5	41.1	40.9	39.9	40	39	39.8	37.6	34.1	29.3	24.4	23.2	22	19.3
64.8	59.3	62.5	59.4	60.5	59.8	59.3	58.3	56.1	54.5	51.2	48.5	43.6	37.7	31.5	25.1
43.4	49.8	50.1	39.2	39.5	39.1	39.3	38.6	38.1	35.5	32	27.3	23.2	21.9	22.4	18.4
49.2	44.9	45.5	42.5	42	41.1	42.2	39.9	39.1	35.7	32.4	28.3	24.7	22.5	19.8	16.5
42.5	39.5	40.8	40.5	40.5	40.6	42	41.3	40.9	38.9	36.8	33.2	29.4	27.1	26	20
41.8	39.3	41	39.3	39.9	39.6	41.1	38.5	37.9	36	32.2	29.3	27.7	24.5	22.2	17.8
44.7	41.4	41.4	41.5	41.6	41.4	41.8	40.5	40.4	38.9	36.4	33.7	30.2	26.2	24.6	22.2
44.9	41.9	40.1	39.8	42	41.8	41.9	40	39.6	37.5	34	29.9	27.9	26	24.2	21.2
56.8	52.7	46	49.5	54.5	56	53.3	47.8	48.4	42.2	40.1	35	30.8	26.6	21.9	19.6
43.1	39.6	39.2	40.1	39.9	38.9	38.7	38.1	38.8	36.3	32	27.4	24.4	23.1	21.5	19.4
42.6	39.3	39	40.4	40.8	39.6	40.2	39	38.4	35.5	32.1	28	24.3	21.6	19.4	16.5
42.2	39.1	40.9	39.6	38.6	39.7	42	39.5	38.3	35.9	32.8	28.5	24.9	22.1	18.9	16

NM4 KWAQN Barlow Skilled Nursing Facility, Los Angeles.

Raw Data

1/3 LZeQ 160 1/3 LZeQ 200 1/3 LZeQ 250 1/3 LZeQ 315 1/3 LZeQ 400 1/3 LZeQ 500 1/3 LZeQ 630 1/3 LZeQ 800 1/3 LZeQ 1000 1/3 LZeQ 1250 1/3 LZeQ 1600 1/3 LZeQ 2000 1/3 LZeQ 2500 1/3 LZeQ 3150 1/3 LZeQ +1/3 LZeQ!

51.8	49.5	51.3	49.7	49.2	47.6	47.4	46.3	43.2	40	36.5	32.5	29.8	28.8	26.3	25.5
49.2	48.6	46.8	45.9	46.6	44.2	42.4	41.3	40.1	37.6	35.1	32	30.3	28.9	27.2	26.4
48.5	44	41.8	42.6	40.4	39.2	38	38	37.7	35	32.9	29.6	29	26.1	24.2	23
51.9	49.1	49.7	50.9	51.1	51.6	50.4	46.8	43.2	38.7	35.5	30.1	26.9	24.7	23.7	23.3
48.5	45.9	46.4	47.3	46.9	47.3	46	45	43	40.4	37.5	32.1	30	26.8	24.6	23.1
43.8	42.5	39.6	39.7	38	39.1	38.7	38.4	35.3	32.4	27.7	26.4	24.5	21.8	20.1	
49.4	44.7	43	43.1	45.3	41.4	41.2	40.2	39	35.5	32.3	27.9	28	23.7	24.7	
49.6	44.6	42.8	42.6	40.8	40.4	40.8	41.1	40.9	37.7	35.6	34.3	33.5	32.1	30.8	27.5
44.3	43.1	40.1	39.5	39.5	39.1	39.4	39.8	39.5	36.8	34	28.4	24.9	22.2	21.4	20.9
46.9	44.1	42.3	42.3	41.4	39.5	38.6	38.7	37.8	35.2	32.9	28.4	25.5	23.8	24.5	23.8
47.3	43.1	42.4	42.8	41	40.5	39.9	41.2	42	37.5	34.2	28.1	24.4	22.6	23.1	27.7
46.4	44.8	43.4	43.4	41.9	40.5	40.2	40.8	40.5	37.3	33.8	28.7	26.7	26.1	25.9	27.4
44.7	41.5	43	42.9	41.5	41.4	40.9	40.2	39.5	36.5	33.8	27.3	24.2	23.1	24	22.5
45.8	42.9	43.6	44.6	42	40.6	40.3	39.7	38.5	35.4	32	25.7	22.6	22.6	21.6	17.4
45.8	42	42.1	42.9	44.5	42.9	41.8	41.5	40.1	37.2	33.6	27.2	22	19.2	18.1	16.3
48.1	46.2	42.8	44	48	44.1	42.8	42	41	38.2	33.8	26.4	21.3	19.4	20.8	17.9

**NM1\_KWAQN Barlow Skilled Nursing Facility, Los Angeles.**

Raw Data

1/3 LZeQ 6300	1/3 LZeQ 8000	1/3 LZeQ 10000	1/3 LZeQ 12500	1/3 LZeQ 16000	1/3 LZeQ 20000	1/3 LZSmax 6.3	1/3 LZSmax 8.0	1/3 LZSmax 10.0	1/3 LZSmax 12.5	1/3 LZSmax 16.0	1/3 LZSmax 20.0	1/3 LZSmax 25.0
24.4	23.1	19.9	17.4	16.1	14	58.8	57.5	59.1	59.1	57.3	53.9	62
23.6	21.8	20.7	18.5	16	14.9	59.3	62.4	53.3	54.2	51.1	53.5	58.9
21.8	20	17	14.3	12.6	13.6	51.1	50.2	49.7	48.9	48.9	55.3	60.7
24	20.3	18.2	15.2	13.1	13.7	60.8	56	55.9	54.4	51.7	55.7	59.9
25.1	22.4	19.8	16.7	14.3	14	75.8	73.1	74	69.4	66.1	63.4	63.8
23.6	20.7	18.1	15.4	13.2	13.4	72	68.8	68.4	65.2	63.5	61.9	60.6
24.1	22.6	18.6	15.5	13.1	13.3	66.7	63.5	60.7	58.4	58	67.3	60.5
22.7	20.7	17.6	14.5	12.5	13.7	49.3	48	48.5	51.2	51.5	54.9	59.7
23	21.3	18.6	15.8	13	14.4	56.4	51.1	51.3	56.3	54.9	54.3	60
22.9	21.7	20	17.1	14.1	14.7	61.7	55.7	55.6	56.3	61.4	60.3	60.8
21.5	20	17.6	14.3	12.3	14.3	57.5	53.4	52.8	53	58.2	63.3	62.2
23	21.5	18.1	15	13	14.6	56.7	56.2	54.3	52.4	53.1	54.5	59.6
26	23.1	20.6	16.6	13.7	14.9	47.7	51.4	50.6	52.3	57.7	61.1	59.4
25.8	23.7	22.3	21.2	19.7	17	48.6	46.6	47.7	50	51.2	57	56.6
22	20.1	17.2	14.5	12.5	14.8	51.4	51	50	52.5	54.6	57	55.9
21.3	20.1	17.2	15.1	12.9	15	49.1	46.5	47.3	50.1	57	58.5	55.3

**NM2\_KWAQN Barlow Skilled Nursing Facility, Los Angeles.**

Raw Data

1/3 LZeQ 6300	1/3 LZeQ 8000	1/3 LZeQ 10000	1/3 LZeQ 12500	1/3 LZeQ 16000	1/3 LZeQ 20000	1/3 LZSmax 6.3	1/3 LZSmax 8.0	1/3 LZSmax 10.0	1/3 LZSmax 12.5	1/3 LZSmax 16.0	1/3 LZSmax 20.0	1/3 LZSmax 25.0
17.8	14.4	12.6	10.3	9.2	12.1	52.6	51.7	51.9	50	51.7	58.3	60.9
15.1	13	10.5	9.3	8.2	12.1	57	55.5	54.6	51	52.5	58.8	60.5
17.2	15.6	12.8	10.8	8.9	12.2	51.5	52.7	52.4	50.8	53.9	59.6	60.1
15	12.5	10.3	9	8	11.9	52.2	52.5	53.6	51.6	55	59.8	60.5
16.7	11	9.3	8.2	7.7	11.8	49.5	52	52.9	52.1	52.8	58.2	60
15.6	12.1	10.2	9.2	8	11.9	57.7	55.6	52.4	53.3	53.7	58.7	60.1
16.6	13.1	11	9.6	8.3	11.9	57.6	53.6	53.8	53.8	56.4	58.7	60.5
23.7	20	17.7	14.5	12.4	12.5	60.1	58.1	55.2	52.4	53.9	59.8	59.7
14.9	13	10.1	8.7	8	11.7	65.2	67.1	65.9	61.8	59	61	60.7
13.8	11.6	9.2	8.1	7.6	11.6	58.4	60.4	56.1	56	55.3	62.1	61.1
14.4	12.7	10.6	9.3	8.3	11.6	64.2	61	58	56	53.7	58.6	60.3
18.3	14.9	13	10.3	8.5	11.9	58.3	53.4	55.4	53.2	55.7	59.9	64.3
17.2	15.3	13.2	10.3	8.4	11.3	55.3	54.4	56.8	61.7	61.4	61.5	65.4
24.3	23.1	21	18.6	15	15	66	60.9	61.8	61.1	54.1	59	69.1
20.3	20.6	18.8	16.3	12	11.8	60	59.5	57.8	55.8	57.5	59.4	60.5
14.3	12.6	10.3	8.7	7.8	11.2	55.6	57.4	56.4	54.6	53	58.9	62.1

**NM3\_KWAQN Barlow Skilled Nursing Facility, Los Angeles.**

Raw Data

1/3 LZeQ 6300	1/3 LZeQ 8000	1/3 LZeQ 10000	1/3 LZeQ 12500	1/3 LZeQ 16000	1/3 LZeQ 20000	1/3 LZSmax 6.3	1/3 LZSmax 8.0	1/3 LZSmax 10.0	1/3 LZSmax 12.5	1/3 LZSmax 16.0	1/3 LZSmax 20.0	1/3 LZSmax 25.0
19.7	17.9	14.1	11.8	9.7	12.5	61.1	58.2	60.2	56.1	54.5	54.8	57.8
21.3	19.2	16.8	14.5	12.2	13	64.5	64.1	59.6	59.4	55.8	63.2	53.6
21.6	19.5	18	16.1	14	13.5	71.2	71.2	73.5	67.8	66.3	65.9	61.4
20	18.6	17.3	14.4	11.6	12.5	74.7	73.1	72.9	67.4	66.3	62.6	60.5
17.4	15.7	14	12.3	10.3	12.5	67.1	62.3	65.8	64.2	64.6	59.5	61.2
21.4	18	16.5	15	13.7	15	68.3	68.2	66.1	63.6	80.3	86.6	71.8
16.9	15.3	13.9	11.6	9.9	12.7	65.7	65.1	63.5	61.7	59.3	60.1	54
14.8	14.8	12.9	11	9.2	12.7	68.5	66.9	64.6	67.5	64.9	61.3	59.6
15.1	15.5	10.5	8.8	7.9	12.3	64.9	60	59.5	56.7	55.5	54.2	53.6
15.3	15.3	12.5	10.6	9	12.1	63.1	61.7	57.9	60.4	54.4	52.6	57
20.3	17.9	16.1	13.4	11.1	12.7	70.7	65.7	64.1	62.7	63.1	60.9	57.7
19.8	17.5	16.4	12.8	10.9	12.7	63	60.5	56.5	56.8	54.4	59.8	55.8
21.8	22.3	18.8	11.5	9.3	12.4	63.7	59.1	58.6	56.7	58.6	59	58
17.7	15.8	14.1	11.9	9.8	12.7	68.5	67.8	64.6	63	59.2	59.9	56
17.2	14.4	12	9.7	8	12.3	63.3	63.8	65.7	61	59.2	54.9	55.5
13.3	11.1	9.6	8.4	7.5	12.1	61.6	57.4	58.9	53.4	53.6	52.4	55.4

**NM4\_KWAQN Barlow Skilled Nursing Facility, Los Angeles.**

Raw Data

1/3 LZeQ 6300	1/3 LZeQ 8000	1/3 LZeQ 10000	1/3 LZeQ 12500	1/3 LZeQ 16000	1/3 LZeQ 20000	1/3 LZSmax 6.3	1/3 LZSmax 8.0	1/3 LZSmax 10.0	1/3 LZSmax 12.5	1/3 LZSmax 16.0	1/3 LZSmax 20.0	1/3 LZSmax 25.0
24	21.3	18.9	17.1	14	14.7	67.8	71.8	65.6	64.5	62.4	75.1	70.8
25.9	24.7	24	22.4	20.4	17.5	75.5	73.4	72.9	70.5	68.3	69.9	64.3
21	20.4	17	14.2	12.1	13.3	73	71.3	74	69	66.2	65.2	61.6
22	20.5	17.3	14.6	14	13.6	71.4	70.6	68.9	67.3	76.4	73.7	61.3
21.5	20.2	18.2	16.6	14.1	14.1	72.5	70.4	69.4	66	73.9	64.6	59.2
19.1	18.3	14.1	13.3	12.4	12.9	67.1	68.3	63.6	63.1	63.4	62.5	55.5
24.8	18.6	16.7	14.9	12.3	13.3	69.1	65.6	68.3	65.9	61.6	62	56.6
24	21.8	20.5	16.4	12.8	13.6	67.3	71.4	63.1	62.8	62.6	63.5	56.1
20.6	17.2	14.8	12.5	11.3	12.6	76.6	76.2	67.3	67.9	64.9	64.5	60.8
28.4	21.9	19	16.6	14.4	13.4	67.5	66.1	63.6	62.2	61.8	58.8	59.6
24.6	17.7	14.6	12.6	11.1	13.3	71.3	74.7	67.4	64.6	64.6	66.4	62.3
27.9	23.2	20.2	17.3	15.2	14.8	66.4	62.6	61.7	61.3	61	66.4	56.9
22	19.7	19.5	17.9	15.8	15	68.5	65.6	70.1	61.8	59.1	60.7	54.6
14.1	15.1	13.9	13.1	10.2	14.9	70.2	69.3	67	64.6	62	64.2	57.8
14.4	13.3	13	11.9	10.6	14.3	66.6	62.8	59.5	58	58.9	58.8	56
16.1	15.2	13.8	12.4	11.2	14.4	57.7	58.3	58.1	57	56.6	58.8	54.3

NM1\_KWAQN Barlow Skilled Nursing Facility, Los Angeles.

Raw Data

1/3 LZSmax 31.5	1/3 LZSmax 40.0	1/3 LZSmax 50.0	1/3 LZSmax 63.0	1/3 LZSmax 80.0	1/3 LZSmax 100	1/3 LZSmax 125	1/3 LZSmax 160	1/3 LZSmax 200	1/3 LZSmax 250	1/3 LZSmax 315	1/3 LZSmax 400	1/3 LZSmax 500
63.7	51.9	51.7	52.4	53.3	49.4	48.1	46.8	43.3	43.1	39.4	43.3	46.7
61.2	53.7	50.5	51	54.1	50	47	46.7	45	46.7	43.5	43.6	44.3
61.5	55.2	58.7	56.3	55	54.7	47.5	47.2	41.3	41.5	40.7	39.9	42
61.6	58.4	64.1	58.8	58.3	55.3	54.4	49.1	46.3	48	42.6	44.7	44.9
63.8	57.1	59.2	58.4	57.4	55.4	56.8	53.9	48.3	49.1	45	45	47.4
62.5	58.5	60.7	61.8	55	54.3	52.5	57.2	54.4	49.6	43.6	45.2	49.9
62.1	61.4	57.1	54.1	55.1	55.1	55.1	49.9	50.1	48.4	44.2	47	44.1
62.4	61.6	59.3	58.4	59.1	63.7	54.8	51	47.9	46.4	44.7	44.1	44.4
61.3	57.7	56	57.7	62	56.8	61.8	50.7	53.1	52.9	48.7	48.8	46.8
58	54.7	55.6	55.4	62.2	52.6	53.9	55.2	52.1	51.3	53.7	51.3	52.6
60.9	54.8	55.3	53	53.7	52	51.6	47.1	46.5	43.3	43.6	44	51.6
51.9	52.7	52.6	52.6	53.9	59	62.9	58.7	51.5	51.2	44.9	38.8	35.4
58.8	56	57.1	58	55.4	61.8	55.8	55.1	52	49.7	48.7	47.7	47.4
53.4	56.6	57.2	54.3	54.3	51	51.7	46.8	46.5	45.7	41.7	40.9	40.7
55.5	55.9	54.1	59.2	57.7	53.8	54.6	53.2	52.7	50.1	45.9	43	43.4
55.4	57.3	53.6	52.3	56.2	51.6	53.1	52	51.2	43.1	41.4	40.9	46

NM2\_KWAQN Barlow Skilled Nursing Facility, Los Angeles.

Raw Data

1/3 LZSmax 31.5	1/3 LZSmax 40.0	1/3 LZSmax 50.0	1/3 LZSmax 63.0	1/3 LZSmax 80.0	1/3 LZSmax 100	1/3 LZSmax 125	1/3 LZSmax 160	1/3 LZSmax 200	1/3 LZSmax 250	1/3 LZSmax 315	1/3 LZSmax 400	1/3 LZSmax 500
59.2	57.7	63.6	59.1	69.4	67	55	50.5	54.2	49.4	45.2	43.5	41.2
58.8	58.7	56.9	59.6	51.1	52.9	52.7	44.7	42.1	44.6	39.2	38.9	37.9
61.1	56	57.3	54.8	50.5	52.1	52.2	46.2	41.5	41.9	42.8	43.8	39.8
59.5	57.8	60.9	60.1	71.2	66.4	58.5	56.4	52.2	51.7	46.9	45	50.1
59.1	57.9	57.9	55	52.7	64.4	54.3	44.2	43.7	45.5	41.3	40.5	36.4
59.7	58.8	60.2	61.3	60.5	57.2	55.1	56	57.2	56.5	52.4	48.8	46.9
60.1	58.2	59.7	63.6	56.4	56.2	55.8	47.4	42.5	46.1	41.7	40.1	41.8
64.8	60.2	64.4	59.7	61.2	59.5	49.9	50.3	51.2	48.6	45.4	46.9	46.9
59.7	65.6	65.5	54.9	61.1	60.9	59.2	48	50	49.7	44.1	44.8	45.5
61	57.5	57.9	57.3	53.6	56.5	64.1	55.7	45.8	50.5	43.3	41.7	44
58.9	59.3	59	55.6	49.8	57.1	53.7	43.5	43	44.1	38.7	38.3	37.5
63.8	57.9	58.5	56.6	56.1	55.2	53.3	46.9	45.3	44.9	44.2	40.2	41.3
62.1	62	63.9	63.9	59.7	56.5	56	54.2	50.7	45.9	49.5	45.2	43.9
64.7	62.3	61.3	59.4	54.8	58.4	55.2	46.7	50.6	51.1	48.6	54.7	53.3
60.7	60.6	61.9	56.1	67.5	54.8	53.2	54.3	47.5	52.5	47.1	45.1	42.8
58.7	57.1	59.1	54	50	52.7	51.6	48.9	40.9	46.4	38.8	37.9	37.5

NM3\_KWAQN Barlow Skilled Nursing Facility, Los Angeles.

Raw Data

1/3 LZSmax 31.5	1/3 LZSmax 40.0	1/3 LZSmax 50.0	1/3 LZSmax 63.0	1/3 LZSmax 80.0	1/3 LZSmax 100	1/3 LZSmax 125	1/3 LZSmax 160	1/3 LZSmax 200	1/3 LZSmax 250	1/3 LZSmax 315	1/3 LZSmax 400	1/3 LZSmax 500
51.2	48.7	49.8	50.3	51.6	47.8	49.2	44.2	40.4	40.5	41.2	39.5	39.4
50.9	57	54.1	49	49.2	47.2	48	49.7	42	47.8	52.8	51.7	47.1
60.3	56.9	56	52	50.9	48.8	46.4	44.6	41.9	42.5	42.5	41.8	41.3
58.6	55.1	52.6	52	49.1	49.5	52.8	46.4	41.9	41.4	43.7	45.8	43.3
56.4	52.1	61.6	53.4	57.5	60.1	61.9	51.2	49.3	47.8	45.1	45.7	43.9
70	80.4	75.9	73.6	72.8	71.3	70.3	76.6	70.5	73.5	70.3	70.9	70.1
52.5	52.4	55.4	51.6	58	76.7	74.8	47.5	58.5	59.3	42.1	43.3	41.8
57.4	53.6	52	51.1	59.9	55.8	54	54.2	49.5	52.2	45.4	45.1	43.8
52.7	52.2	53.1	49.5	50.3	53.7	53	50.7	46.9	44.8	44.5	46.4	46.3
61.9	64.3	58.7	55.7	55	48.7	50.3	45.1	44	44.1	42.4	43.3	44.8
62.5	56.3	60.2	54.3	49.8	48.3	49.9	49	47.5	44.3	45.1	45.6	45.1
54	49.7	53.6	55.1	51.4	50.4	49.5	53.2	52.7	45.8	48.2	54.8	53.6
60.3	54.2	51.4	51.4	52.2	57.9	55.6	63.7	61.8	55.1	57.7	62.7	65.6
59.8	53.6	55.6	51.7	55.6	58.7	48.6	46.4	47.7	47.7	49.3	45.6	43.4
55.3	51.5	53.3	51.2	50.1	58.2	50.9	46.7	46.7	45	49.2	46.6	45.5
53.8	54.5	54.6	51.6	47.6	51.4	56.3	44.2	44.4	48.3	43.6	40.7	42.1

NM4\_KWAQN Barlow Skilled Nursing Facility, Los Angeles.

Raw Data

1/3 LZSmax 31.5	1/3 LZSmax 40.0	1/3 LZSmax 50.0	1/3 LZSmax 63.0	1/3 LZSmax 80.0	1/3 LZSmax 100	1/3 LZSmax 125	1/3 LZSmax 160	1/3 LZSmax 200	1/3 LZSmax 250	1/3 LZSmax 315	1/3 LZSmax 400	1/3 LZSmax 500
56.1	70.6	67.1	63.6	62.5	59.9	57.4	58.3	55.5	56.9	55.9	55.2	54.5
61	66.4	57.5	60.8	66.6	54.9	54.2	55.4	55.3	52.2	54.6	54.1	51.4
59.4	59.5	57.3	55.8	65.1	53.7	55.8	52.9	47.9	44.5	45.5	42.6	41.8
65.2	68.2	61.3	64.9	64.5	61.7	56.5	55.3	53.3	55.6	55.9	55.9	57.6
62.3	58.4	61.2	56.5	62	59.2	54.9	57.6	52.9	54	54.7	55.9	55.3
56.5	55.3	53.5	55.4	59	49.9	50	48	47.8	43.1	44.6	42.6	40.6
55.9	57.3	55.3	56.1	54.6	54.5	60.3	55.4	47.9	48.4	48.1	53.1	47.6
55.9	57.4	55.4	58	56.9	58.2	55.2	55.3	49.4	47.9	50.7	47.3	43.3
59.5	57.8	60	53.8	52.6	53	49.5	48	46.7	41.9	42.9	43.5	42.8
58.9	57.6	55.8	55.1	54.3	58.6	64.3	51.4	47.4	46.2	45	44	42
56.6	56	54.3	55.9	53.8	52.8	52	51.5	47.3	49	48	45.6	46.7
54.5	57.4	55	56.7	52.6	50.6	54.2	54.3	50	48.7	49.2	44.3	44.2
54	58.5	55	54.4	55	53.3	55	50.6	46.2	47.7	47.1	43.5	46.4
54.7	58.6	54	54.3	56.3	52.1	49.6	49.9	46.5	46.9	48.2	45.4	43.6
55.2	56.1	56	55.5	56.7	51.5	50.9	48.9	44.2	44.7	47	48.5	46.8
53.3	55.6	56.9	55.8	52.8	52.5	55	50.5	49.3	44.5	45.6	50.2	46.7

NM1 KWAQN Barlow Skilled Nursing Facility, Los Angeles.

Raw Data

1/3 LZSmax 630	1/3 LZSmax 800	1/3 LZSmax 1000	1/3 LZSmax 1250	1/3 LZSmax 1600	1/3 LZSmax 2000	1/3 LZSmax 2500	1/3 LZSmax 3150	1/3 LZSmax 4000	1/3 LZSmax 5000	1/3 LZSmax 6300	1/3 LZSmax 8000
44.9	47.2	48.3	46.3	43.8	40.3	37.4	36.4	34.7	33.5	34.2	33
45.1	47.8	47.3	47.3	45.7	42.2	38.9	35.8	35.2	35.2	29.5	32
44.7	47.2	48.6	46.2	45	41.8	37.1	34.7	31.7	27.4	25.3	23
47.9	47.7	46.3	48	45.9	41.9	36.9	34.9	34.3	37.3	31.9	27.2
48.5	52.5	51.8	49.9	48	44.2	40.2	37.1	35.4	33	30.5	27.4
51.1	50.5	49.9	51	49.9	44.8	38.1	34.7	33.5	32.1	26.4	24.7
47	48	48.8	47.7	45.8	42.6	37.8	34.3	34.3	30.5	28	34.7
46.3	47.7	47	46.3	46.5	44.3	39	34.6	32.3	32.1	27.1	27
50.3	51.9	50.1	47.7	47	42.2	38.4	36.5	34.4	31.6	30.5	27.6
55.7	53.5	51.6	50.7	47.7	45.5	40.9	37.5	33	28.7	27.1	27
51	50.5	49.6	47.4	45.4	40	35.9	33	30.7	28.3	28.4	23
36.4	38.6	36.4	38.9	36.1	33	35	33.7	35	32.6	32.9	30.6
48.9	49.9	49.5	48.1	46.1	43	38.9	35.6	39.2	36	39.4	34.2
44.7	47.2	48.4	47.2	46.1	42.1	37.1	35.5	36.3	37.1	40.3	37.9
46.4	47.5	47.5	47.9	44.9	40.7	37.7	34.9	32.6	30	30	27.2
42.3	44.5	47.4	46	44.1	40.4	36.6	33.7	29.9	25.1	21.7	20.6

NM2 KWAQN Barlow Skilled Nursing Facility, Los Angeles.

Raw Data

1/3 LZSmax 630	1/3 LZSmax 800	1/3 LZSmax 1000	1/3 LZSmax 1250	1/3 LZSmax 1600	1/3 LZSmax 2000	1/3 LZSmax 2500	1/3 LZSmax 3150	1/3 LZSmax 4000	1/3 LZSmax 5000	1/3 LZSmax 6300	1/3 LZSmax 8000
42.3	43.8	45.5	46.7	45.2	45.9	44.9	41	35.6	31.7	28.6	23.5
41.5	44.4	43.8	42	41.8	40	35	27.3	25.3	22.9	23.2	20.2
42.7	44.8	45.5	42.8	41.2	39.5	39.9	36.4	33.9	30.4	27.7	25.5
49.5	49	47.1	44.6	42.9	38.4	33.8	28.7	24.4	23	23.5	20.7
37.5	39.4	40.9	38.4	36.6	32.1	27.4	24.5	29.5	26.8	25	17
48.5	47.6	46.4	44.3	43.7	37.2	31.3	29.2	31.1	28	22.4	21
43.4	44.7	45	43.1	40.6	35	31.2	28.2	28.8	26.7	21.6	15.7
50.9	46.5	45.8	46.4	46.3	47.1	45.4	40.7	38	35.2	31.6	28.1
49.4	46.7	46.1	46.4	46.4	45.9	43.8	39.1	36.2	33.5	26.7	21
51.8	47.2	45.6	42.7	40.5	35.6	31.3	27.2	24.4	21.5	17	16
45.1	40.9	41.7	40.5	38.5	34.3	30.1	26	29.9	27.2	20	17.9
44	45.5	43.6	42.2	39.4	35.6	33.7	32.9	29.8	35.7	27.6	21.3
45.4	45.5	44.6	41.9	38.7	35.3	33.2	31.2	27.8	23.9	21.2	19.2
48.4	45.1	43.9	48.6	48.6	44.4	39.3	41	35.1	32.8	30.8	30.1
44.4	46.5	46.3	44.2	42.3	37.8	37.4	33.1	30.9	30.7	30.9	32.5
39.8	41.3	40.9	39.5	37.5	33.3	28.8	25.5	24.1	20.4	18.6	17.5

NM3 KWAQN Barlow Skilled Nursing Facility, Los Angeles.

Raw Data

1/3 LZSmax 630	1/3 LZSmax 800	1/3 LZSmax 1000	1/3 LZSmax 1250	1/3 LZSmax 1600	1/3 LZSmax 2000	1/3 LZSmax 2500	1/3 LZSmax 3150	1/3 LZSmax 4000	1/3 LZSmax 5000	1/3 LZSmax 6300	1/3 LZSmax 8000
38.7	38.7	38.3	37.6	37.7	31.3	30.5	27.9	26.9	24.5	25.7	23.7
44.4	43.3	44.9	41.1	37.2	34.2	33.8	34.7	34	31.6	28.8	27
41.5	40.9	42.6	42.6	37.7	36.2	32.8	31	31.4	30.5	28.6	26.4
44.1	43.5	43.9	41.3	37.8	34.6	32	33	35.4	34.8	30	29.2
45.7	44.9	45.7	43.6	39.5	34.6	28.2	27.9	25.1	24.5	24	23.9
70.2	69.8	67.2	65.8	62.3	60.6	55.7	49.8	42.8	36.8	32.9	29.7
42.4	42.6	41.7	38	36.5	31.2	26.7	27.5	31.4	26.3	27.1	27.1
46.9	43.8	42.3	37.9	34.7	31.2	28.7	27.9	27	24.6	22.6	23.8
47.9	49.5	50	47.8	46.4	42.3	38.2	33.5	37.2	30.3	21.1	22.5
47.8	42.4	42.3	43.1	36.4	34	33.5	32.9	29.6	25.1	24.1	25.7
46.1	46.2	48	47.2	45.1	43.1	38.8	33.5	32.3	31.2	31.2	29.1
53	49.5	45.9	43.4	41.8	34.8	38.2	37.7	34.9	30.9	31	29.2
61.9	57.7	58.5	53.1	50.7	45.6	41	37.6	28.1	27.8	33.2	31.6
41.9	40.6	43.2	41.5	35.5	30.5	31.1	31.1	28.5	25.6	23.1	23.4
45.9	41.8	42.1	38.9	36.8	33.2	30.1	27.2	26.5	25.7	28.4	25.4
43.8	41.9	41.5	39	36.4	33.4	29.9	28.7	26.5	26.1	23.6	19.8

NM4 KWAQN Barlow Skilled Nursing Facility, Los Angeles.

Raw Data

1/3 LZSmax 630	1/3 LZSmax 800	1/3 LZSmax 1000	1/3 LZSmax 1250	1/3 LZSmax 1600	1/3 LZSmax 2000	1/3 LZSmax 2500	1/3 LZSmax 3150	1/3 LZSmax 4000	1/3 LZSmax 5000	1/3 LZSmax 6300	1/3 LZSmax 8000
53.7	54.1	47.7	44.9	43.8	42.9	40.4	39.7	34.8	33.2	31	27.9
50.9	48.1	46.4	45	41.4	40	38.7	36.5	33.9	32.2	31.4	32.2
39.7	40.7	40.6	38.4	39	39.3	42.5	38.2	34.8	32.1	29.1	32.9
58.1	53.9	47.3	42.1	39.2	35.4	32.8	31.5	30.5	30.6	28.8	27.8
54	53.8	51.9	52	50.7	42.2	40.3	37.6	35.6	31.9	27.5	26.7
40.7	41.5	42.2	41.5	39.9	37.2	36.4	32.1	30.3	27	26.2	25.9
46.5	43.6	42.3	39.3	37	39.1	41.6	43.4	35.7	33.7	32.9	27.2
49.4	45.6	51.6	47.5	46.6	48.3	47.2	46.1	42.7	43.1	36.7	36.4
44.8	43.3	43.8	42.4	39.6	34.9	34.6	31.5	31.3	28.6	30	26.8
41.8	42.2	42.1	40	38.9	37.2	36.1	34.4	35	35.7	34.7	33.9
46.4	49.9	53.3	47.1	41.8	34.7	32.1	28.2	28.9	29.5	31.6	24.6
43.3	44.1	44	39.5	36.7	33.5	32.7	34	33.3	32.9	37.9	36.3
47.4	46.6	44.7	40.6	38.8	32.9	32.4	29.6	34.3	30.9	30.3	29.2
42	41.8	40.2	37.2	36.2	28.7	26.2	29.4	29.8	25.9	18.5	26.1
45.5	45.9	42.6	39.3	37.1	30.8	26.5	24.4	23.1	24	21.6	20
44.5	43.5	42.5	39.7	35.6	28.2	23.1	21.9	26.3	22.8	18.7	17.3

NM1\_KWAQN Barlow Skilled Nursing Facility, Los Angeles.

Raw Data

1/3 LZSmax 10000	1/3 LZSmax 12500	1/3 LZSmax 16000	1/3 LZSmax 20000	1/3 LZSmin 6.3	1/3 LZSmin 8.0	1/3 LZSmin 10.0	1/3 LZSmin 12.5	1/3 LZSmin 16.0	1/3 LZSmin 20.0	1/3 LZSmin 25.0	1/3 LZSmin 31.5	1/3 LZSmin 40.0
30.1	28.4	28.2	21.7	39.5	39.1	39.9	42.2	40.4	45.2	54.4	59	45.8
33.9	30.4	24.8	20.3	36.6	37.5	39.4	42.9	41.6	46	54.2	58.3	44.9
20.7	18.3	15.5	14.6	35.4	38.8	38.9	40	43.1	46	55.6	57.7	45.7
27.4	20.7	19	17.3	40.9	41.5	41.3	43.1	43.5	47.9	56.1	58.4	49
25.8	23.9	20.6	16.6	42.6	41.6	41.6	42	43.1	48.2	54.4	58.5	48.8
22.1	20.9	18.3	16.1	54.1	50	49.8	50.9	48.6	48.8	54.8	58	48.9
26.3	22.6	19.1	15.6	36.7	38.2	40.2	44.6	43.6	48	55.3	59.2	48.5
20.7	17.3	14.6	14.8	36.3	38.7	40.2	42.6	43.1	44.5	54.5	59.1	48
24.2	23	17.4	15.4	36.7	39.2	38.2	41.5	44.4	47.3	55.3	47.5	47.3
27.9	25.4	21.2	18.4	43.7	41.5	42.2	44.4	43.6	47.4	55.6	47	46.6
20.8	16.5	15.3	14.6	41.5	40.9	40.5	41.1	42.1	47.4	54.8	45.8	45.5
27.1	22.6	20.6	18.6	38.6	39.8	40.3	41.5	40.1	47.5	55.2	46.3	46.1
32.5	24.2	21.3	17.7	36.5	38.8	37.4	41.6	41.5	48	50.6	46.4	46.9
37	34.6	31.2	27.5	34.6	37.8	39.5	40.1	42.9	47.9	49.9	46.8	47.4
22.1	18.6	16.7	16.2	37.7	38.9	40.4	42.8	42.4	47.4	49.2	46.5	45.6
18.1	15.9	13.2	15.1	44.3	41.6	43.7	46.7	51	55.4	52.3	51.4	53.9

NM2\_KWAQN Barlow Skilled Nursing Facility, Los Angeles.

Raw Data

1/3 LZSmax 10000	1/3 LZSmax 12500	1/3 LZSmax 16000	1/3 LZSmax 20000	1/3 LZSmin 6.3	1/3 LZSmin 8.0	1/3 LZSmin 10.0	1/3 LZSmin 12.5	1/3 LZSmin 16.0	1/3 LZSmin 20.0	1/3 LZSmin 25.0	1/3 LZSmin 31.5	1/3 LZSmin 40.0
21.3	17.6	16.8	13.4	43.2	44.1	41.5	42.3	45.4	52.2	54.2	52.8	51.8
15.5	14.2	11.2	12.6	39	42.5	42.7	43.1	45.5	49.9	52.5	53	51.8
22.4	19.9	16.5	14.7	41.5	42.2	44.2	42.3	45.2	50.7	52	52.3	51.3
18.3	16	12.9	13.1	39.4	41.9	43.9	41.9	44.7	51.7	54.3	54	51.4
16	13.7	11.4	13	40.4	42.4	43.1	41.9	45.9	50.4	53.8	52.2	51.7
20.7	19.6	15.8	14.3	39.8	42.6	40.6	43.1	45.4	52	54.9	52.5	51.2
15	12.8	10.3	12.5	40.1	44.5	43.9	43.5	45.9	50.1	53.6	54	52.6
26	22.7	19.7	15.8	41.3	44.1	43.1	41.9	45.4	52	53.7	53.6	52.2
15.9	12.9	12.3	12.4	46.1	45	45.1	46.4	46.3	51.4	53.6	53.1	52.1
14.7	12.7	10.8	12.2	38.8	44.7	43.1	41.5	45.5	52.2	53.7	53.5	52.1
15.8	14.6	12	12.5	44.6	44.1	42.1	42.2	46.6	52.3	52.9	53.2	51.6
18.9	17.4	12	18.9	38.9	42	43.1	43.5	45.7	52.3	54.9	53.8	52.1
17.3	14.1	12.6	12.9	38	42.9	42.4	39.7	46.1	51.8	55.1	53.2	52.4
28.3	25.3	22.9	20.5	40.3	43.6	43.5	42.7	46.4	52.1	53.9	53.1	52.4
31.3	28.9	22.2	16.7	41.7	43.6	43.8	42.6	46.3	51.8	54.8	54.3	52.4
15.8	12.9	9.3	11.6	43.8	43.8	43.9	43.5	43.6	51.7	54.9	53.5	51.4

NM3\_KWAQN Barlow Skilled Nursing Facility, Los Angeles.

Raw Data

1/3 LZSmax 10000	1/3 LZSmax 12500	1/3 LZSmax 16000	1/3 LZSmax 20000	1/3 LZSmin 6.3	1/3 LZSmin 8.0	1/3 LZSmin 10.0	1/3 LZSmin 12.5	1/3 LZSmin 16.0	1/3 LZSmin 20.0	1/3 LZSmin 25.0	1/3 LZSmin 31.5	1/3 LZSmin 40.0
17.8	14.6	11.8	13	51.4	50.6	49	47.8	44.4	47.9	47.5	45.5	44.2
23.7	20.7	17.8	17.5	40.3	39.9	41.8	44.6	42.2	45.8	47	44.3	43.6
26.4	25.2	23.1	19	44.7	41.4	46.2	44	46.4	45.3	47.3	45.5	44.8
29.4	25.1	20.5	17.3	48.8	45.4	45.7	45.3	44.2	45.6	47.2	44.3	46
22.5	20.6	18.1	16.2	47.6	46.8	46.8	47.5	45.5	45.8	47.8	45.2	44.9
28.4	27.1	25.8	25.8	41.2	38.4	41.9	43.5	49.2	45.8	48.2	48.1	46.6
23.6	19.6	19.3	16.3	48.5	47.4	47.9	46.3	46.6	48.1	49	46.3	43.9
21.8	19.2	15.6	15.9	49.6	46.5	45.5	45.7	45.8	47.5	48.9	47.1	45.9
13.9	11.8	9.2	12.7	43.3	43.6	42.7	44.6	44	45.6	47.3	44.9	43.7
22.6	20.9	16.9	14.5	42.1	43.1	44.9	42.9	43.8	45.3	46.7	44.7	43.2
26.1	23	19.1	15.6	40.9	42.1	41.9	46	44	45.8	48.8	46.2	44.3
29.3	22.6	20.1	20.3	41.7	39.7	41.4	43.3	43.6	45	47.2	45.7	42.5
27.8	17.7	12.3	13.5	46	45	45.4	45.2	44.8	45.6	48	46.1	44.7
18.3	16.8	12.9	13.4	48.9	46.1	45.6	43.8	43.6	45.7	46.4	51.5	43.6
24.7	19	12	12.6	47	46	45.4	46	45.7	44.5	47.2	48.8	44.8
15.5	11.6	8.9	12.3	48.2	45.5	44.1	44.4	44.1	45.3	48.1	47	45.2

NM4\_KWAQN Barlow Skilled Nursing Facility, Los Angeles.

Raw Data

1/3 LZSmax 10000	1/3 LZSmax 12500	1/3 LZSmax 16000	1/3 LZSmax 20000	1/3 LZSmin 6.3	1/3 LZSmin 8.0	1/3 LZSmin 10.0	1/3 LZSmin 12.5	1/3 LZSmin 16.0	1/3 LZSmin 20.0	1/3 LZSmin 25.0	1/3 LZSmin 31.5	1/3 LZSmin 40.0
25.1	23.7	20.2	18.5	55.4	52.1	53.2	49.5	49.8	52	53.8	48.2	50.2
31.4	31.2	29	23.8	56.5	49.8	49.6	50	56.3	56.9	49.6	50	52.9
28.7	25.2	20.3	15.9	57	55.8	53	52.5	49.8	55.1	50.7	48.3	52.4
26.3	22.9	25.6	20.4	50.1	43.6	46.6	45.9	46.7	57.7	49.4	47.1	53
27	26.6	21.4	19.8	50.7	51.6	46.6	46.5	49.8	52.7	48.6	49.7	49.2
23	24.3	24.4	17.6	53.5	50.8	49	47.4	48.1	50.9	48.1	48.3	49
26	24	20.2	17.4	53.3	51.6	51	47.9	48.8	51.7	49.7	47.8	50.2
35.9	28.3	23.5	18.3	53	50.5	47.7	47.2	46.8	49.3	49.7	49.4	49.8
26.3	21.7	18.5	15.8	54.9	50.4	49.1	50.2	48.9	54.3	49.3	49.2	51.7
31.7	29.1	26.6	20.2	52.9	52.4	48.5	49.5	48.9	48.4	49.4	48	48.9
22.7	20.7	18.6	17.2	48.7	49.5	47.2	47.4	49.3	53.8	49.1	48.7	49.8
31.4	26.6	24.6	20.7	46	45.7	48.1	46.3	46.5	49.7	48.4	48	50.3
28.8	27.5	26.6	21	43.2	43	45.8	46.3	46.3	51.9	48.7	48.7	51
21.2	21.9	16.3	23.6	46	45.4	48	47.7	47	52	48.2	47.1	48
21.6	19.8	16.5	17.8	46.4	43.8	42.7	46.1	44.4	46.9	48.3	48	49.5
16	14.6	13.5	14.9	46.7	45.4	46.9	47.7	47.3	54.8	48.9	48.3	50.7

**NM1\_KWAQN Barlow Skilled Nursing Facility, Los Angeles.**

**Raw Data**

1/3 LZSmin 50.0	1/3 LZSmin 63.0	1/3 LZSmin 80.0	1/3 LZSmin 100	1/3 LZSmin 125	1/3 LZSmin 160	1/3 LZSmin 200	1/3 LZSmin 250	1/3 LZSmin 315	1/3 LZSmin 400	1/3 LZSmin 500	1/3 LZSmin 630	1/3 LZSmin 800
44.6	44.9	45.5	43.2	39.2	34.3	28.3	26.8	26.1	27.1	26.6	32.1	25.5
45.2	46.1	45.1	43.5	39.5	33.1	29	28	27.4	28.9	27.7	30.7	27.8
46	46.3	44.6	43.1	39.9	34.8	29.1	27.4	26.4	27.3	27.9	31.5	27.4
47.5	48.1	46.8	45.5	43.7	39.3	35.8	34.3	32.4	31.6	30.9	35.6	34
46.7	47.8	46.6	45.3	43.7	42.6	37.5	32.5	31.9	29.5	27.9	31.1	27.6
48.6	47.5	46.8	45.2	41.8	37.2	33.7	31.4	28.6	28.2	26.6	29.4	25.6
47.9	47.6	48.2	47.2	45.5	43.2	41.6	37	34.3	31.2	28.8	33.5	29.5
48.7	48	47	46.5	44.7	40.3	38.9	32.5	31.7	30.7	29.5	32.7	31.3
47.1	46.9	47	46.2	42.2	37.9	35.1	30.8	29.9	30.2	27.6	30.2	28
46.5	46.5	46.7	44.3	41.5	36.2	32.9	32	31.3	32	33.5	35.3	32.7
45.5	46	46.2	43.4	41	36.8	31.5	28.6	28.1	28.2	26.5	28.9	27.7
44.6	46.8	46.5	46.4	43.8	39.4	38	34.6	32.8	28.3	27.6	27.9	26.9
45.4	47.6	46.9	45.4	41.7	39.2	34.6	31	29.7	29.3	27.9	31.6	28.1
46.1	46.2	46.9	46	41.8	36.7	32.2	30.5	30.1	29.4	29.1	31.2	29.2
46	47.2	48.1	47.1	43.9	40.9	38	34.1	32	31.2	30.3	33.5	31.6
51.4	50	53.3	49.5	49.7	48.2	45.8	40.5	39.1	38.6	41.1	40.9	43.4

**NM2\_KWAQN Barlow Skilled Nursing Facility, Los Angeles.**

**Raw Data**

1/3 LZSmin 50.0	1/3 LZSmin 63.0	1/3 LZSmin 80.0	1/3 LZSmin 100	1/3 LZSmin 125	1/3 LZSmin 160	1/3 LZSmin 200	1/3 LZSmin 250	1/3 LZSmin 315	1/3 LZSmin 400	1/3 LZSmin 500	1/3 LZSmin 630	1/3 LZSmin 800
52.6	50.3	45	48.5	50.4	36.6	36.7	38.8	35.6	35.5	32.6	32.7	31.9
52	48.7	43.8	47.5	50.9	34.1	34.7	38	34.7	34.6	30.5	30.4	30.1
51.2	48.9	43.8	48.3	50.1	35.1	38.6	34.9	34.3	30.7	30.7	30.7	30.1
51.6	49.3	44.4	47.9	50.5	36.6	34.9	39.5	35.7	35.3	31.3	31.7	31.4
52.4	49.8	44.8	48.3	50.1	37	36.3	39.7	35.1	34	31.2	32	31.6
51.9	50	44.4	48.7	50.8	36.6	35.5	39.3	35.4	35.2	32.2	32.6	31.7
52.2	49.7	44.9	48.2	50.7	36.5	36.1	39.5	36.2	35.6	32.5	33.1	33.7
52.4	49.7	44.1	48.5	50.1	36.4	35.5	40.2	35.5	35.1	32.6	31.8	31.6
52.6	50	44.8	47.9	49.6	36.4	36.1	41.2	36.3	35.4	33.3	33.7	32.5
53.1	50.9	44.4	49.3	49.1	36.7	36.1	41.1	35.2	35	32.8	33.6	33.1
52.1	49.7	44.6	48.4	48.8	35	35	41	35.2	35.2	32.1	33	32.4
52.5	50.4	45	48.3	49	37.4	36.7	40.4	36.3	35.3	32.2	32.2	33.3
53	49.3	44.8	47.9	49.8	37.4	36	41.2	35.9	35.5	33	33	34.2
52.7	49.9	44.6	49.8	50	37.2	38.3	41.3	37.4	36	33.6	34.1	33.9
51.9	50.5	45.9	49.5	50.4	41.4	36.6	43	36	35.9	32.6	33.4	32.5
52.8	50.7	45.3	48.4	49.2	40.7	36.5	41.2	36.1	35.5	32.4	34	32.4

**NM3\_KWAQN Barlow Skilled Nursing Facility, Los Angeles.**

**Raw Data**

1/3 LZSmin 50.0	1/3 LZSmin 63.0	1/3 LZSmin 80.0	1/3 LZSmin 100	1/3 LZSmin 125	1/3 LZSmin 160	1/3 LZSmin 200	1/3 LZSmin 250	1/3 LZSmin 315	1/3 LZSmin 400	1/3 LZSmin 500	1/3 LZSmin 630	1/3 LZSmin 800
46.1	44.8	44.5	44.2	44.3	40.9	35.9	36.7	36.4	36.1	35.6	34.9	36
45.5	44	43.1	42.7	40.8	39.3	36.7	35.2	35.9	35.6	35.2	35.3	34.9
47.5	44.7	44.5	43.1	42.2	39.2	36.9	36.5	36.7	36.5	34.8	35.6	34.7
45.9	44.2	44.1	43.3	42.6	41.1	36.8	36.8	36.9	35	34.2	33.8	33.3
47.8	44.2	44.1	43.9	43.7	40.7	37.7	38.4	36.9	37.4	35.5	34.5	34.2
45.7	45.6	44.4	43.2	45.9	47.1	37.3	36.4	37	36.9	35.8	36.4	34.2
45.9	45	44.8	46.5	44.7	41.1	37.4	37.3	36.9	36.6	34.6	35.7	34.3
47.4	45.2	44.6	43.8	43.6	43.6	39.2	39.5	39.4	38.4	38	38	34.2
46.3	43.6	43.9	43.3	41.8	39	37.2	37.2	37.5	35.1	33.4	35.7	33.6
47.2	44.9	44	43.4	43	39.7	36.2	36.5	36.1	35.6	33.9	36.9	33.5
46.1	45.4	43.5	43.4	43.1	40.9	38.7	38.2	38.3	37.1	36.5	37.5	36
45.6	43.1	43.5	42.5	41	38.9	34.9	35.2	35	35.6	34.1	34.1	32.1
46.1	46	42.8	44.4	42.6	40.3	37.3	35.6	37.8	36.3	33.8	34.7	33.3
45.1	45.6	43.6	44	42.7	40.8	36.1	35.3	36.6	35.6	33.6	35.3	34.2
47.2	45	43.2	43	42.3	39.9	36.5	35.9	37.5	37.2	35.5	36.3	35.7
46.9	44.9	42.8	43.8	42.6	40.1	36.1	35.4	37.2	36	37.1	40.1	35.8

**NM4\_KWAQN Barlow Skilled Nursing Facility, Los Angeles.**

**Raw Data**

1/3 LZSmin 50.0	1/3 LZSmin 63.0	1/3 LZSmin 80.0	1/3 LZSmin 100	1/3 LZSmin 125	1/3 LZSmin 160	1/3 LZSmin 200	1/3 LZSmin 250	1/3 LZSmin 315	1/3 LZSmin 400	1/3 LZSmin 500	1/3 LZSmin 630	1/3 LZSmin 800
52.5	53.7	52	52.5	48	46.5	41.5	40	41.2	39.2	38.8	39.1	38.6
50.8	50.5	49.2	47.7	46.8	44.1	42.3	40	40	39.6	38.5	38	37.3
49.3	50.9	49.6	46.1	45.8	45	38.9	39.1	38.7	37.8	36.7	36	34.7
48.1	51	51.2	49.4	48.5	47.1	40.1	40.2	39	39.2	37.6	36.8	36.7
48.6	50.3	47.7	46.4	45.7	41.8	39.3	38.8	39.6	37.9	37.5	36.8	36.3
49.2	49.3	48.8	45.9	46.5	40.3	38.5	37.3	37.6	37.4	36.6	36.7	36.3
48.5	50.5	49.2	46.9	47.2	41.6	41.6	37.3	38.6	38.8	37	37.9	36.6
49.7	50.3	49.2	47.7	47.9	44.3	41	39.3	38.8	38.4	38.3	37.9	37.7
49.1	48.6	47.6	45.9	44.7	41.2	39.8	37.7	37.2	37.3	37.2	37	36.7
49	48.9	46.6	47	45.3	42	40	38.7	39.7	39.1	37.1	35.4	35.4
48.7	49.3	47	46	46.6	44	38.8	39.2	39.2	38.1	36.6	36.3	35.9
49	49.7	46	45.7	45.2	40.7	40.1	39.7	40.3	39.7	38	37.9	37.6
48.9	48.5	47.7	45.5	45.2	40.6	39.1	39.9	40.2	38.6	38.6	38.5	37.6
49	49.1	48.2	45.3	43.8	40.1	38.4	39.3	40.9	39.1	38.9	38.3	37.2
49.6	50.1	48.5	45.6	44.1	40.2	38.3	39.2	39.5	37.8	38.7	38.1	38.2
52.2	52.2	49.8	48.4	45.7	44.4	42.3	39.3	42.8	46	41.9	40.8	39.7

NM1 KWAQN Barlow Skilled Nursing Facility, Los Angeles.

Raw Data

1/3 LZSmin 1000	1/3 LZSmin 1250	1/3 LZSmin 1600	1/3 LZSmin 2000	1/3 LZSmin 2500	1/3 LZSmin 3150	1/3 LZSmin 4000	1/3 LZSmin 5000	1/3 LZSmin 6300	1/3 LZSmin 8000	1/3 LZSmin 10000	1/3 LZSmin 12500
24.6	27.2	26.5	25.6	26.2	26.4	25.3	23.1	20.6	18.2	15.3	12.9
27.3	28.7	27.9	26.7	26.6	26.3	25	22.7	20.3	17.7	14.9	12.9
26.4	28.4	27.4	26.1	25.8	26.2	24.3	22.1	19.1	17.6	15.2	12.6
33.4	32.8	31.7	28.4	26.6	25.6	23.4	19.8	17.3	15.2	13	11.2
27	28.7	28.4	26.9	26.3	27.7	26.7	23.2	20.2	18.9	16.4	13.8
24.3	27.3	26.8	25.8	25.4	26.7	25.9	23.8	20.4	18.6	15.5	13.1
29.6	30.8	29.7	26.7	26.5	26.4	26.6	24.2	21.3	18.5	15.4	12.7
32.7	32.8	31	28.1	26.6	26.5	26.3	22.2	19.5	17.6	14.9	12.1
28.2	29.3	28.8	26.4	25	26.2	25.1	22.4	19.5	18.3	15.9	13.1
39.7	39.1	36.8	32.8	29	27.7	26.5	22.5	19.5	18.4	16	13.2
26.6	28.5	27.5	25.6	24.6	25.2	24.8	21.8	19	17.7	15.6	12.8
26.5	28.3	27.5	25.1	24.5	26.1	24.8	21.2	18.9	17.1	13.9	11.6
26.9	29.7	27.7	25.7	24.3	25.3	24.8	21.9	19.3	16.5	14.6	12.6
28.3	29.3	28.2	26.8	25.4	25.9	23.5	20.9	19.2	16.6	14.3	12
30.7	30.3	29.9	27.9	26.8	25.1	23.8	21.5	18.8	16.9	14	12.5
43.5	43.3	40.3	36.2	32.5	30.5	27.6	23.9	20.7	18.6	15.4	12.8

NM2 KWAQN Barlow Skilled Nursing Facility, Los Angeles.

Raw Data

1/3 LZSmin 1000	1/3 LZSmin 1250	1/3 LZSmin 1600	1/3 LZSmin 2000	1/3 LZSmin 2500	1/3 LZSmin 3150	1/3 LZSmin 4000	1/3 LZSmin 5000	1/3 LZSmin 6300	1/3 LZSmin 8000	1/3 LZSmin 10000	1/3 LZSmin 12500
31	30.7	28.3	27.5	24.1	22.3	19.6	15.6	12.2	10.3	8.7	7.8
28.2	27.8	24.5	22.3	20.4	19.2	17.5	13.4	11.1	9.6	7.6	7.4
28.8	27.7	25	22.3	20.7	18.5	17.7	13.8	11.3	9.9	8	7.5
30	30.5	25.9	23	20.5	18.8	16.3	13.7	11.5	9.7	7.9	7.3
30.1	29.7	27	24.5	21.6	20.2	18.7	14.7	11.9	9.7	7.9	7.3
30.8	30.7	26.9	23	20.9	20	17.3	14.2	11.8	10.1	8	7.4
31.8	32.3	27.9	23.7	21.5	19.7	19	15.1	12.5	10.2	8.1	7.5
31.1	30.3	26.6	24.2	21.8	20.3	18.6	14.8	12.1	10.2	8.2	7.4
31.5	31	27.1	24.4	21.9	21.5	18.9	15.7	13	11	8.5	7.5
31.3	30.1	26.8	23.7	21.7	20	18.2	14.7	12.2	10.4	8.1	7.1
32	31.6	28.1	24.5	21.6	19.4	17.9	14.5	12.2	10.2	8.1	7.3
31.6	31	27.5	24.8	22.6	20	17.9	14.8	12.6	10.9	8.5	8.5
33.1	31.6	29.2	26	23.7	23.2	20.7	17	14.4	12.3	10.5	8.1
33.4	32.7	30.4	27.1	23.3	21.3	19.8	16.6	14.1	11.9	9.7	8.4
31.3	30.8	26.6	23.5	22	20.9	18.2	14.3	11.8	10.2	7.9	7.2
31.4	30.7	26.6	23.4	22.1	21	18.4	14.2	11.9	10.2	8	7.1

NM3 KWAQN Barlow Skilled Nursing Facility, Los Angeles.

Raw Data

1/3 LZSmin 1000	1/3 LZSmin 1250	1/3 LZSmin 1600	1/3 LZSmin 2000	1/3 LZSmin 2500	1/3 LZSmin 3150	1/3 LZSmin 4000	1/3 LZSmin 5000	1/3 LZSmin 6300	1/3 LZSmin 8000	1/3 LZSmin 10000	1/3 LZSmin 12500
33.6	33.4	30.1	25.2	20.9	19.9	16.4	15.3	13.7	11.1	10.4	9.1
34.4	31.9	28.4	24.3	20.4	18	16.4	14.7	12.7	10.7	10	8.6
34	32.7	29.4	24.4	21.6	20.4	18.6	16.2	14.3	12.7	11.7	10.3
32	29.5	26.1	23	21.5	21	20.1	16.4	14.1	12.2	10.5	9
32.7	31.3	28.2	24.6	21.5	19.4	18.1	15.7	13.5	11.7	10.3	9.1
32.8	30.4	26.4	22.9	20.5	19.7	18.5	14.8	12.6	10.7	9.7	8.5
32.9	31.4	27.2	23.4	20.1	17.4	14.8	13.8	12	10.3	10.1	8.5
31.8	31.4	27.9	23.6	21.6	17.8	15.2	12.9	11.1	9.5	8.8	7.8
31.2	29.9	24.7	21.1	18	17.1	16	12.2	11	9.4	8.3	7.6
31.2	30	24.9	21.3	19	19	17.7	13.8	11.9	11	9.4	8.2
32.7	30.6	26.2	23.3	20.4	18.9	17.2	15.6	13.7	11.9	10.8	9
29.1	28.2	23.2	20.7	18.2	16.6	14.6	13	11.3	10.1	9.3	8.2
31.8	30.6	25.5	23.2	22.9	19.4	17.7	16	13.6	12	10.4	8.7
32.7	31.6	27.5	23.4	21.1	19.9	17.3	14.8	13.1	11.4	10.2	8.7
33.9	32.2	27.1	23.1	20.3	18.4	15.7	13.5	11.9	10.2	9.1	8.1
33.2	31.8	27.6	23.1	20.4	18.3	15.8	12.7	10.5	9.2	8.5	7.6

NM4 KWAQN Barlow Skilled Nursing Facility, Los Angeles.

Raw Data

1/3 LZSmin 1000	1/3 LZSmin 1250	1/3 LZSmin 1600	1/3 LZSmin 2000	1/3 LZSmin 2500	1/3 LZSmin 3150	1/3 LZSmin 4000	1/3 LZSmin 5000	1/3 LZSmin 6300	1/3 LZSmin 8000	1/3 LZSmin 10000	1/3 LZSmin 12500
37.1	33.8	30.7	25.4	21.1	17.5	16.6	15.5	15	13.4	12	10.7
36.5	33.1	30.8	25.7	22.8	20.6	17.9	16.8	16.3	15.2	12.8	11.4
33.8	30.6	26.8	22.8	20.3	18.1	16	14.6	14.7	12.9	11.2	9.3
35.7	33.7	29.9	24.5	21.2	17.3	16.1	14.6	15.3	15.6	10.9	9.6
35.8	32.6	29.9	23.7	20.4	18.5	17.4	15.9	14.9	14.2	12.4	11.1
35.5	31.6	28.2	21.9	20.2	17.8	14.9	13.5	11	9.4	8.6	8
36.1	32.2	29.3	22.9	20.1	17.1	14.8	13.8	10.9	9.4	8.6	8
36.9	34.3	31	25.2	21.4	17	15.2	14.6	13.1	10.7	9.7	8.9
36.8	33.5	30.2	24.5	19.4	15.6	13.9	12	11.1	10	9.1	8.3
34.7	31.2	27.9	21.8	18.2	17	15.5	15.3	13.7	10.5	9.1	8.3
34.9	31.5	27.7	21.7	18.8	16.7	15.5	14.3	13	9.8	8.7	8.1
37.6	34.4	30.4	24.1	20.1	17.2	17.5	19.8	20.5	11.8	9.2	8.3
36.8	33.7	30.3	23.4	18.9	15.7	13.6	12.2	11.6	11.3	10.6	8.9
35.9	32.7	28.5	22.7	18.8	16.2	14.1	11	9.9	9.4	8.9	7.9
36.8	33.6	29.2	23	19.3	15.3	13.2	9.7	8.7	8.3	8.3	7.7
39.2	35.5	31.3	24.8	19.3	15.6	14.2	13.1	12.2	11.1	10.4	9.3



NM1 KWAQN Barlow Skilled Nursing Facility, Los Angeles Raw Data

1/3 LZ5min 16000 1/3 LZ5min 20000 LAleq-LAeq OVLD OBA OVLD Marker

11.3	12.7	4.5	No	No
11.5	13.1	0.5	No	No
10.7	13.2	0.6	No	No
9.3	12.9	0.6	No	No
11.4	13.2	3.5	No	No
11.2	12.8	2	No	No
10.9	12.7	5.2	No	No
10.3	13	-0.2	No	No
11	13.8	1.2	No	No
11.3	14	3.3	No	No
10.9	14	0.7	No	No
9.8	14.1	3.3	No	No
10.7	14.4	0.9	No	No
10.2	14.3	5.5	No	No
10.8	14.4	1.3	No	No
11.1	14.5	0.6	No	No

NM2 KWAQN Barlow Skilled Nursing Facility, Los Angeles Raw Data

1/3 LZ5min 16000 1/3 LZ5min 20000 LAleq-LAeq OVLD OBA OVLD Marker

7.3	11.8	0.4	No	No
7.1	11.8	-0.3	No	No
7.1	11.8	1.2	No	No
7.1	11.6	0.8	No	No
7	11.4	0	No	No
7.1	11.6	0.5	No	No
7.2	11.7	1.4	No	No
7.3	11.4	0.1	No	No
7.2	11.4	0.3	No	No
7.1	11.4	5.3	No	No
7.2	11.4	1.3	No	No
7.4	11.2	0.9	No	No
7.1	10.9	0.1	No	No
7.6	11.1	1.3	No	No
7	10.8	0.3	No	No
7	11	1.4	No	No

NM3 KWAQN Barlow Skilled Nursing Facility, Los Angeles Raw Data

1/3 LZ5min 16000 1/3 LZ5min 20000 LAleq-LAeq OVLD OBA OVLD Marker

8.4	12.2	0.2	No	No
8	12.1	1.6	No	No
9.1	12.3	-0.1	No	Yes
7.9	11.8	1.4	No	Yes
8	11.9	1.3	No	No
7.6	12.1	4.2	No	Yes
7.6	12.3	0.5	No	No
7.5	12.2	1.9	No	No
7.1	11.9	1.1	No	No
7.4	11.7	0.3	No	No
8	12	0.1	No	No
7.4	11.7	2	No	No
7.7	11.9	4.2	No	No
7.6	12.2	2.3	No	No
7.3	12	0.4	No	No
7.1	11.9	1.5	No	No

NM4 KWAQN Barlow Skilled Nursing Facility, Los Angeles Raw Data

1/3 LZ5min 16000 1/3 LZ5min 20000 LAleq-LAeq OVLD OBA OVLD Marker

9.7	13.4	1	No	No
10.1	13.7	0.1	No	Yes
8.8	12.2	1	No	No
9.1	12.4	3.4	No	No
10	12.8	0.3	No	No
7.9	11.9	0.5	No	No
8	11.8	7.7	No	No
8.5	12.2	0.8	No	No
8.1	11.8	0.5	No	No
8.1	11.7	0.5	No	No
8	12.2	0.6	No	No
8.3	12.6	0.5	No	No
8.6	13.4	1.2	No	No
7.8	13.4	0.7	No	No
7.9	13.7	0.6	No	No
8.8	14	0.2	No	No

**Table C**  
**Construction Noise by Phase - Residential Receptors East of the Project Site (NM3)**

A	B	C	D	E	F	G	H	I
Equipment Type	# of Equipment	Equipment Lmax at 50 feet, dBA <sup>1,2</sup>	Distance to Receptor <sup>3</sup>	Equipment Usage Percent	Usage Factor	Dist. Correction dB	Usage Adj. dB	Noise Level Leq (dBA) at Receptor
<b>Demolition</b>								
Concrete/Industrial Saw	1	89.6	530	20	0.20	-20.5	-7.0	62.1
Rubber Tired Dozers	2	82	530	40	0.80	-20.5	-1.0	60.5
Excavator	3	81	530	40	1.20	-20.5	0.8	61.3
							Log Sum	66.1
<b>Grading/Excavation</b>								
Excavator	2	81	530	40	0.80	-20.5	-1.0	59.5
Graders	1	85	530	40	0.40	-20.5	-4.0	60.5
Rubber Tired Dozers	1	82	530	40	0.40	-20.5	-4.0	57.5
Scrapers	2	84	530	40	0.80	-20.5	-1.0	62.5
Tractors/Loaders/Backhoes	2	79	530	40	0.80	-20.5	-1.0	57.5
							Log Sum	66.4
<b>Building Construction</b>								
Aerial Lift	1	75	530	20	0.20	-20.5	-7.0	47.5
Forklifts	3	64	530	50	1.50	-20.5	1.8	45.3
Generator Sets	1	81	530	50	0.50	-20.5	-3.0	57.5
Welders	1	73	530	40	0.40	-20.5	-4.0	48.5
Tractors/Loaders/Backhoes	3	79	530	40	1.20	-20.5	0.8	59.3
							Log Sum	62.0
<b>Paving</b>								
Pavers	2	77	530	50	1.00	-20.5	0.0	56.5
Paving Equipment	2	85	530	20	0.40	-20.5	-4.0	60.5
Rollers	2	80	530	20	0.40	-20.5	-4.0	55.5
							Log Sum	62.9
<b>Architectural Coating</b>								
Aerial Lift	1	75	530	20	0.20	-20.5	-7.0	47.5
Air Compressors	1	78	530	40	0.40	-20.5	-4.0	53.5
							Log Sum	54.5

Notes:

(1) Source: Referenced noise levels from the Federal Transit Administration (FTA) Transit Noise and Vibration Impact Assessment Manual (September 2018).

(2) Source: [https://www.google.com/url?q=http://www.noisetesting.info/blog/warehouse-forklift-workplace-noise-levels/&sa=D&source=hangouts&ust=1545259247311000&usg=AFQjCNHFcKKoEKUjv5VZM0tw\\_KO977Em1A](https://www.google.com/url?q=http://www.noisetesting.info/blog/warehouse-forklift-workplace-noise-levels/&sa=D&source=hangouts&ust=1545259247311000&usg=AFQjCNHFcKKoEKUjv5VZM0tw_KO977Em1A)

(3) Distance to receptor calculated from center of site. Construction noise projected from the center of the project site to the structural façade of the nearest sensitive use.

**Table D  
Construction Noise by Phase - Receptors West of the Project Site (NM4)**

A	B	C	D	E	F	G	H	I
Equipment Type	# of Equipment	Equipment Lmax at 50 feet, dBA <sup>1,2</sup>	Distance to Receptor <sup>3</sup>	Equipment Usage Percent	Usage Factor	Dist. Correction dB	Usage Adj. dB	Noise Level Leq (dBA) at Receptor
<b>Demolition</b>								
Concrete/Industrial Saw	1	89.6	705	20	0.20	-23.0	-7.0	59.6
Rubber Tired Dozers	2	82	705	40	0.80	-23.0	-1.0	58.0
Excavator	3	81	705	40	1.20	-23.0	0.8	58.8
							Log Sum	63.6
<b>Grading/Excavation</b>								
Excavator	2	81	705	40	0.80	-23.0	-1.0	57.0
Graders	1	85	705	40	0.40	-23.0	-4.0	58.0
Rubber Tired Dozers	1	82	705	40	0.40	-23.0	-4.0	55.0
Scrapers	2	84	705	40	0.80	-23.0	-1.0	60.0
Tractors/Loaders/Backhoes	2	79	705	40	0.80	-23.0	-1.0	55.0
							Log Sum	63.9
<b>Building Construction</b>								
Aerial Lift	1	75	705	20	0.20	-23.0	-7.0	45.0
Forklifts	3	64	705	50	1.50	-23.0	1.8	42.8
Generator Sets	1	81	705	50	0.50	-23.0	-3.0	55.0
Welders	1	73	705	40	0.40	-23.0	-4.0	46.0
Tractors/Loaders/Backhoes	3	79	705	40	1.20	-23.0	0.8	56.8
							Log Sum	59.5
<b>Paving</b>								
Pavers	2	77	705	50	1.00	-23.0	0.0	54.0
Paving Equipment	2	85	705	20	0.40	-23.0	-4.0	58.0
Rollers	2	80	705	20	0.40	-23.0	-4.0	53.0
							Log Sum	60.4
<b>Architectural Coating</b>								
Aerial Lift	1	75	705	20	0.20	-23.0	-7.0	45.0
Air Compressors	1	78	705	40	0.40	-23.0	-4.0	51.0
							Log Sum	52.0

Notes:

(1) Source: Referenced noise levels from the Federal Transit Administration (FTA) Transit Noise and Vibration Impact Assessment Manual (September 2018).

(2) Source: [https://www.google.com/url?q=http://www.noisetesting.info/blog/warehouse-forklift-workplace-noise-levels/&sa=D&source=hangouts&ust=1545259247311000&usg=AFQjCNHFcKKoEKUjv5VZM0tw\\_KO977Em1A](https://www.google.com/url?q=http://www.noisetesting.info/blog/warehouse-forklift-workplace-noise-levels/&sa=D&source=hangouts&ust=1545259247311000&usg=AFQjCNHFcKKoEKUjv5VZM0tw_KO977Em1A)

(3) Distance to receptor calculated from center of site. Construction noise projected from the center of the project site to the structural façade of the nearest sensitive use.

Table E						
Noise Levels 50 feet from Roadway Centerline*						
Road Segments	Existing		Existing Plus Project			Is the Increase Significant ?
	ADT	dB CNEL	ADT	Total	Project-Specific Increase	
<b>Academy Road</b>						
w/o Stadium Way	15,540	69.6	15,570	69.6	0.0	No
e/o Stadium Way	5,970	65.5	5,970	65.5	0.0	No
<b>Scott Avenue</b>						
w/o Elysian Park Drive	680	56.0	690	56.1	0.1	No
e/o Elysian Park Drive	820	56.8	860	57.0	0.2	No
w/o Stadium Way	1,280	58.8	1,300	58.8	0.0	No
e/o Stadium Way	90	47.2	90	47.2	0.0	No
<b>Vin Scully Avenue</b>						
w/o Stadium Way	180	50.3	220	51.1	0.8	No
e/o Stadium Way	170	50.0	170	50.0	0.0	No
<b>Elysian Park Drive</b>						
n/o Scott Ave	30	42.5	30	42.5	0.0	No
s/o Scott Ave	0	0.0	0	0.0	0.0	No
<b>Stadium Way</b>						
n/o Academy Road	1,290	58.8	1,300	58.8	0.0	No
n/o Scott Ave	120	48.5	130	48.8	0.3	No
s/o Scott Ave	14,910	69.4	14,970	69.5	0.1	No
n/o Vin Scully Ave	1,220	58.6	1,350	59.0	0.4	No
s/o Vin Scully Ave	19,880	70.7	19,890	70.7	0.0	No
*The uniform distance of 50 feet allows for direct comparisons of potential increases or decreases in noise levels based upon various traffic scenarios; however, at this distance, no specific noise standard necessarily applies						

**GROUNDBORNE VIBRATION ANALYSIS**

Project: Barlow SNF Date: 3/29/22  
Source: Large Bulldozer  
Scenario: Unmitigated  
Location: Project Site  
Address: Onsite buildings  
PPV =  $PPV_{ref}(25/D)^n$  (in/sec)

**INPUT**

Equipment = 2 Large Bulldozer INPUT SECTION IN GREEN  
Type  
PPVref = 0.089 Reference PPV (in/sec) at 25 ft.  
D = 8.00 Distance from Equipment to Receiver (ft)  
n = 1.50 Vibration attenuation rate through the ground

Note: Based on reference equation 7-2 from Transit Noise and Vibration Impact Assessment Manual, Federal Transit Administration, 2018, pg 185.

**RESULTS**

PPV = 0.492 IN/SEC OUTPUT IN BLUE

**GROUNDBORNE VIBRATION ANALYSIS**

Project: Barlow SNF Date: 3/29/22  
Source: Roller  
Scenario: Unmitigated  
Location: Project Site  
Address: Onsite buildings  
PPV =  $PPV_{ref}(25/D)^n$  (in/sec)

**INPUT**

Equipment = 1 Vibratory Roller INPUT SECTION IN GREEN  
Type  
PPVref = 0.21 Reference PPV (in/sec) at 25 ft.  
D = 8.00 Distance from Equipment to Receiver (ft)  
n = 1.50 Vibration attenuation rate through the ground

Note: Based on reference equation 7-2 from Transit Noise and Vibration Impact Assessment Manual, Federal Transit Administration, 2018, pg 185.

**RESULTS**

PPV = 1.160 IN/SEC OUTPUT IN BLUE

**GROUNDBORNE VIBRATION ANALYSIS**

Project: Barlow SNF Date: 3/29/22  
Source: Large Bulldozer  
Scenario: Mitigated  
Location: Project Site  
Address: Onsite Buildings  
PPV =  $PPV_{ref}(25/D)^n$  (in/sec)

**INPUT**

Equipment = 2 Large Bulldozer INPUT SECTION IN GREEN  
Type  
PPVref = 0.089 Reference PPV (in/sec) at 25 ft.  
D = 20.00 Distance from Equipment to Receiver (ft)  
n = 1.50 Vibration attenuation rate through the ground

Note: Based on reference equation 7-2 from Transit Noise and Vibration Impact Assessment Manual, Federal Transit Administration, 2018, pg 185.

**RESULTS**

PPV = 0.124 IN/SEC OUTPUT IN BLUE

**GROUNDBORNE VIBRATION ANALYSIS**

Project: Barlow SNF Date: 3/29/22  
Source: Roller  
Scenario: Mitigated  
Location: Project Site  
Address: Onsite Buildings  
PPV =  $PPV_{ref}(25/D)^n$  (in/sec)

**INPUT**

Equipment = 1 Vibratory Roller INPUT SECTION IN GREEN  
Type  
PPVref = 0.21 Reference PPV (in/sec) at 25 ft.  
D = 36.00 Distance from Equipment to Receiver (ft)  
n = 1.50 Vibration attenuation rate through the ground

Note: Based on reference equation 7-2 from Transit Noise and Vibration Impact Assessment Manual, Federal Transit Administration, 2018, pg 185.

**RESULTS**

PPV = 0.122 IN/SEC OUTPUT IN BLUE