

DRAFT GENERAL PLAN LAND USE DESIGNATION MAP

Encino-Tarzana



GENERAL PLAN DESIGNATION

- Regional Center
- Community Center
- Villages
- Medium Neighborhood Residential
- Medium Residential
- Low Neighborhood Residential
- Low Medium Residential
- Low Residential
- Very Low Residential
- Minimum Residential
- Light Industrial
- Open Space
- Public Facilities
- Public Facilities - Freeway

FAR BASE | BONUS

- 1.5 | 6
- 1.5 | 3-5
- 1.5 | 3
- 1.5 | 3
- 1.5 | 3
- Graduated
- Graduated
- 1.5 | --
- 0.25-0.40 | --
- 0.1 | --
- 1.5 | 3
- 0.1 | --
- 1.5-3 | --
-

HEIGHT BASE | BONUS

- Unlimited
- 3 stories | 5-8 stories
- 3 stories | 5 stories
- 3 stories | 5 stories
- 3 stories | 5 stories
- 3 stories | --
- 3 stories | --
- 33' | --
- 36' | --
- 36' | --
- | --
- 36' | --
- | --
- | --

USE

- Commercial Mixed Auto Sales & Accessory Production
- Commercial Mix Auto Service, Community Center
- Neighborhood Center
- Mixed Use Neighborhood
- Residential Limited
- Mixed Use Neighborhood
- Residential Limited
- Residential Limited
- Residential Limited, Residential Agriculture
- Agriculture
- Light Industrial Sensitive
- Agriculture, Open Space
- Public Facilities Restrictive, Public Facilities Permissive
-

DENSITY

- FA
- 4
- 4
- 8
- 8
- 15
- 15
- 1L
- 1L
- 1 per 2.5 acres
- NA
- NA, 1 per 2.5 acres
- FA
-

SPECIAL DISTRICT

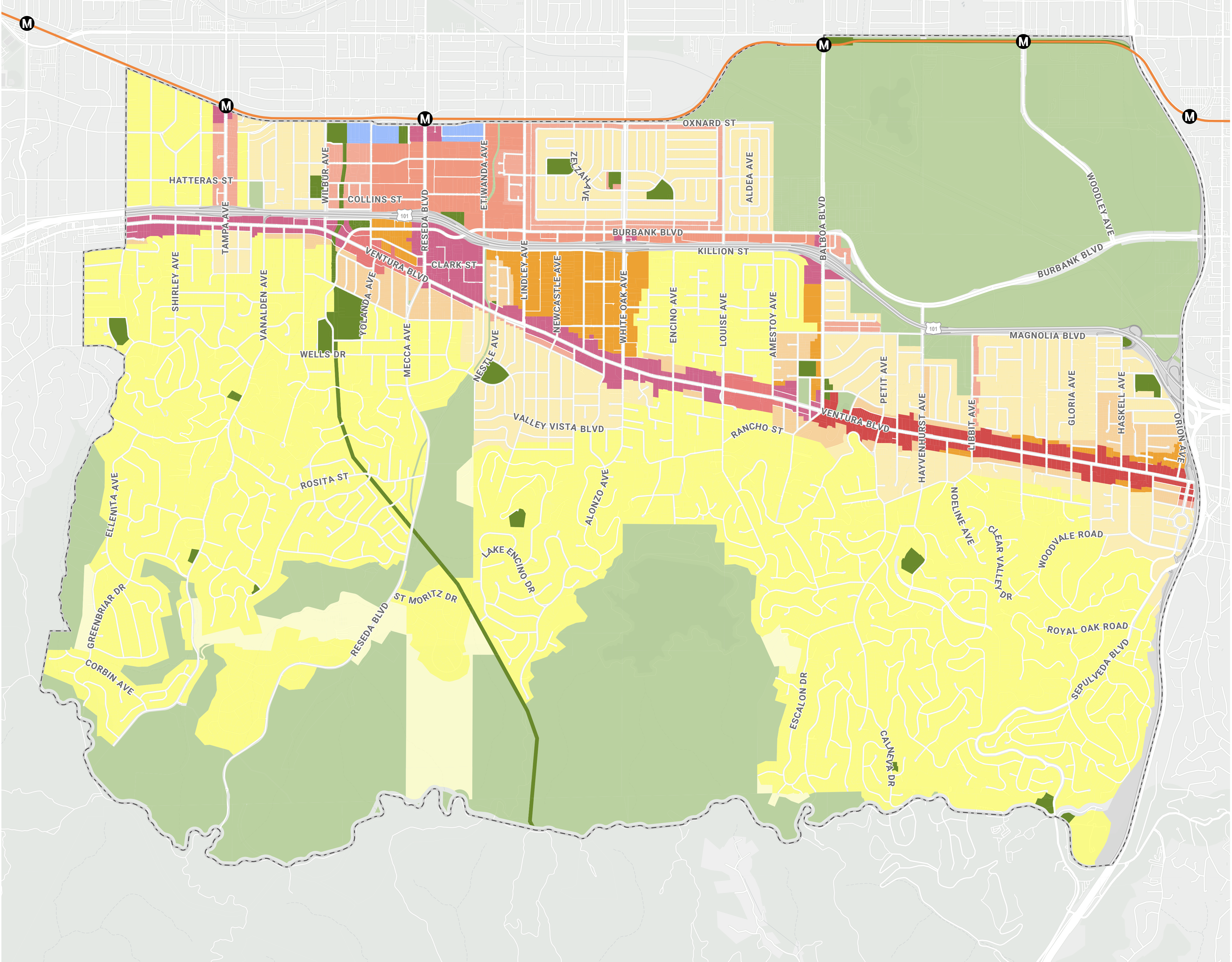
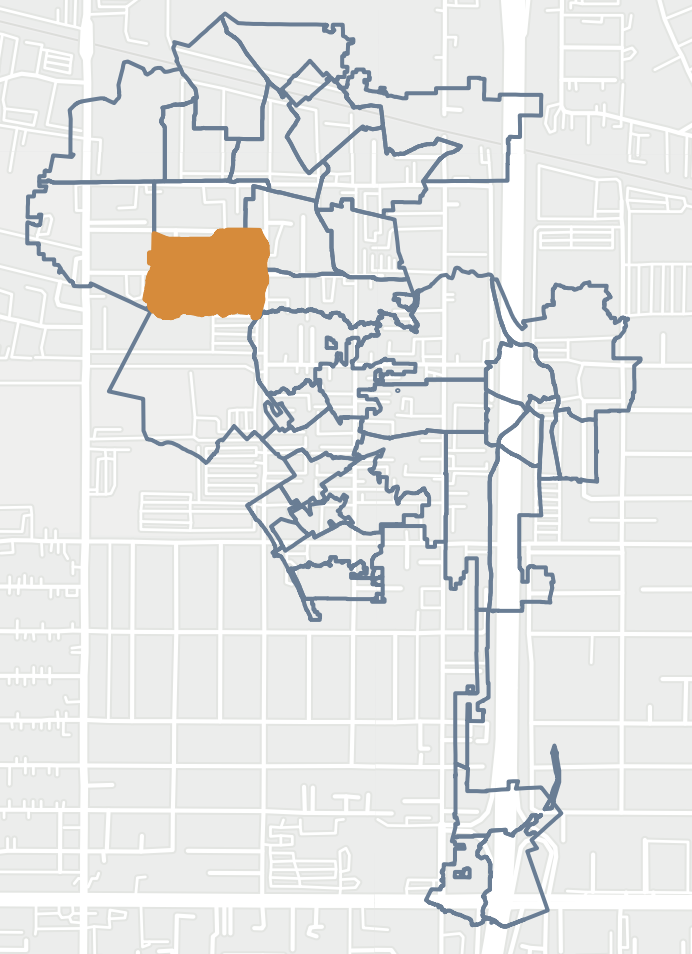
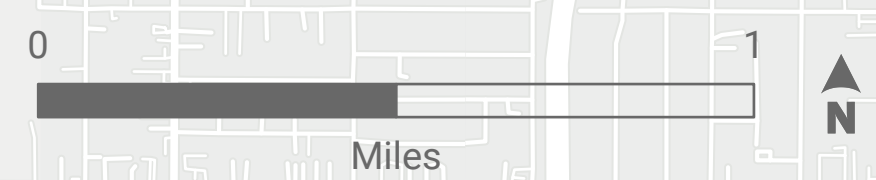
-
-
-
-
-
-
-
-
-
-
-
-
-
- FWY

TRANSPORTATION

- M Metro Stations
- Metro Lines

PLAN BOUNDARIES

- Community Plan Area



WINTER 2024

Disclaimer: The City of Los Angeles is neither responsible nor liable for any inaccuracies, errors, or omissions with respect to the material contained on this map. This map and all materials contained on it are distributed and transmitted "as is" without warranties of any kind, either express or implied, including without limitations, warranties of title or implied warranties of merchantability or fitness for a particular purpose. The City of Los Angeles is not responsible for any special, indirect, incidental, or consequential damages that may arise from the use of, or the inability to use, the map and/or the materials contained on the map whether the materials contained on the map are provided by the city of Los Angeles, or a third party.