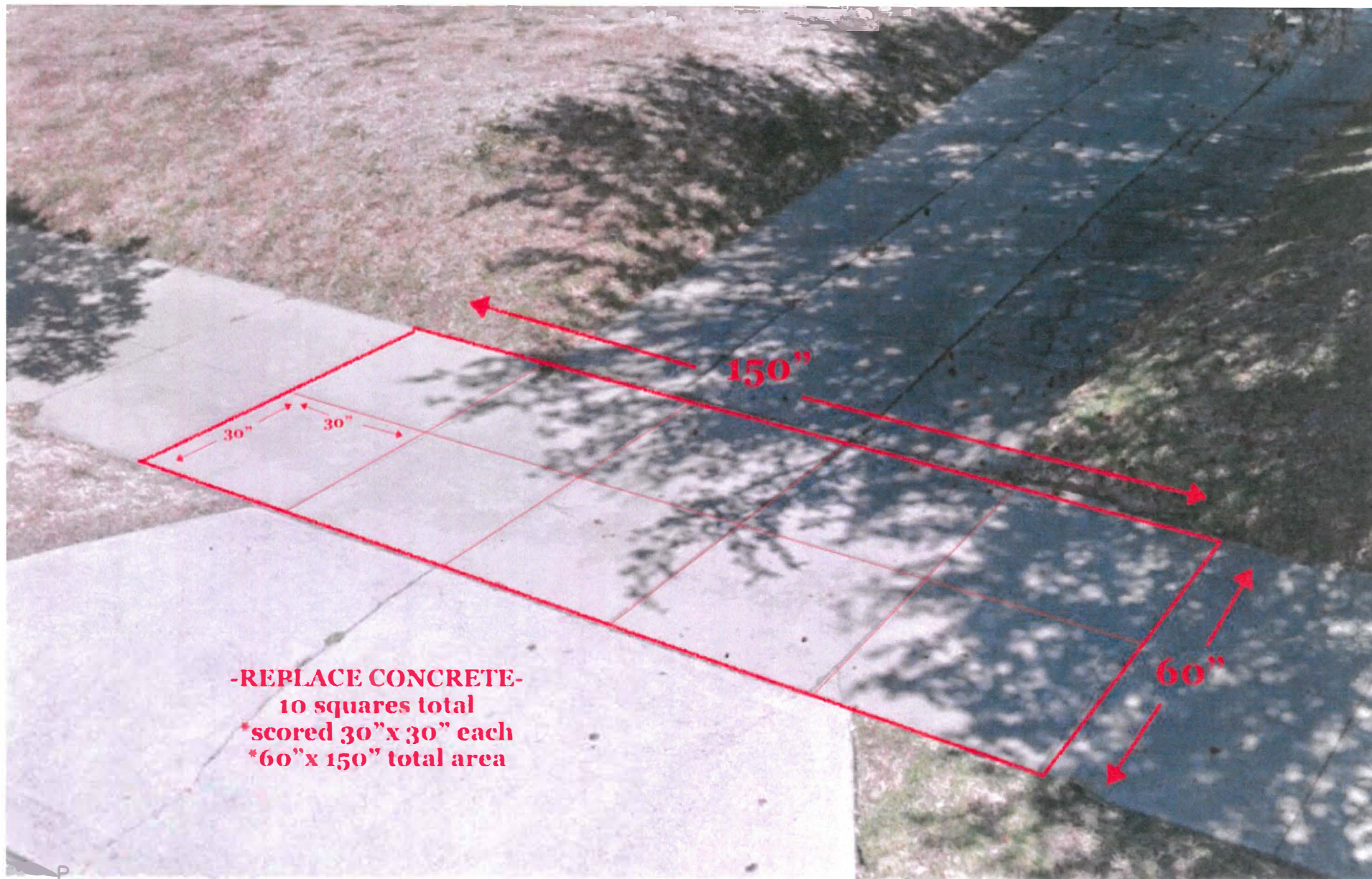


Sidewalk Examples (1 of 2)



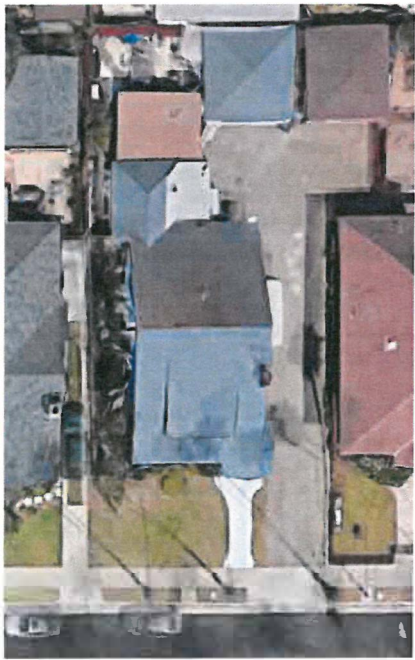
-REPLACE CONCRETE-
10 squares total
*scored 30"x30" each
*60"x150" total area

Sidewalk Examples (2 of 2)

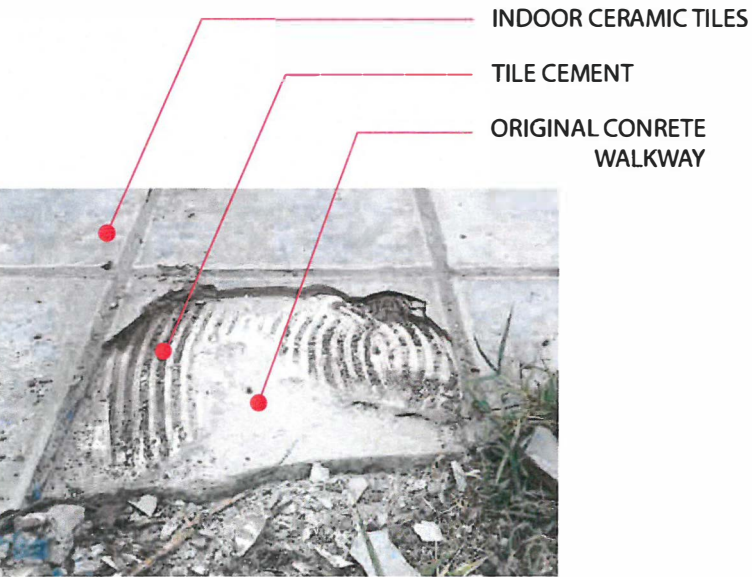
FRONT WALKWAY & STAIRS



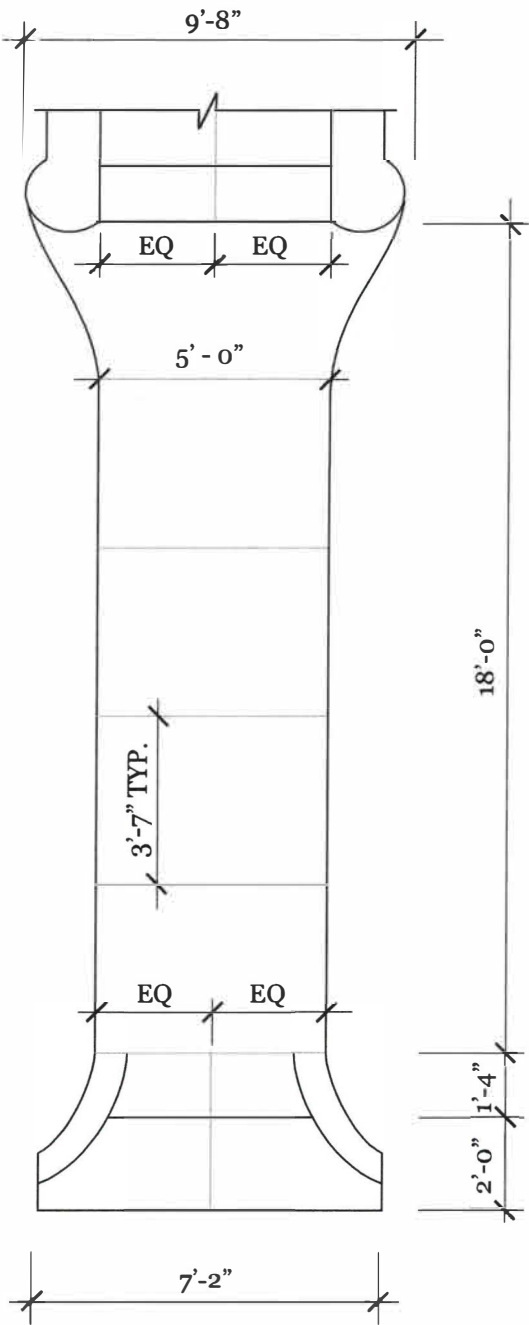
HOUSE LOCATION



PROJECT SITE



CURRENT CONDITION



PROPOSED CHANGES

- *Adjacent line drawing depicts the measurements and shape of the current walkway
- *Proposed replacement walkway will replicate the location and dimensions of the existing walkway
- *Currently the walkway is covered in interior floor tiles and one layer of concrete which sits on top of the original, non-salvageable concrete walkway
- *Proposed walkway will be poured concrete with simple rectangular scoring per the original
- *Curved concrete pieces next to the stairs nearest the sidewalk are to remain
- *Two stairs nearest the front entry will be repoured to repair damage from settling
- *Two stairs near entrance and two stairs near sidewalk will have scoring down the center
- *Walkway will have 4 horizontal score lines placed equally apart (approximately 3'-7")