

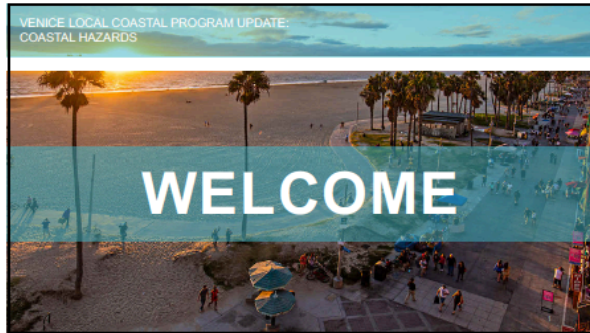


Sea Level Rise Workshop Series Venice Local Coastal Program, Workshop 2

Appendix A Presentation Slides



Sea Level Rise Workshop Series Venice Local Coastal Program, Workshop 2



Introducing the Team

DUDEK **moftatt & nichol**
KEARNS WEST

Hosted by the Department of City Planning and grant funded in part by the California Coastal Commission

Workshop Purpose

- Establish a common framework for community dialogue on sea level rise planning
- Facilitate input and discussion on the community assets for the team to consider in the upcoming vulnerability assessment
- Help community members obtain important information

Today's Workshop Format

- 1. Presentation**
 - Coastal Act and Local Coastal Program Background
 - Goals of the Venice Local Coastal Program Update & Sea Level Rise Planning Project
 - Intro to Sea Level Rise, Coastal Hazards in Venice, and the upcoming Vulnerability Assessment
- 2. Stations for Questions & Input**
 - Coastal Hazard Planning; Sea Level Rise Scenarios and Vulnerability Assessment; Sea Level Rise Hazards in Beach and Canals Areas; Venice LCP
 - Input form (online option at www.VeniceLCP.org)
- 3. Discussion Groups**

California Coastal Act and LCP Background

- California Coastal Act of 1976 requires local governments to have a Local Coastal Program (LCP)
- LCPs regulate and guide development in the coastal zone

Source: [vistacalifornia.com](http://www.vistacalifornia.com)

Venice LCP Background

Local Coastal Program (LCP)

- Land Use Plan (LUP)
 - Venice Coastal Zone Land Use Plan (LUP)
 - Updated 2001
 - Certified by CCC
- Implementation Plan (IP)
 - NOT Certified by CCC

• Department of City Planning is currently updating the Venice LUP



CALIFORNIA
COASTAL
COMMISSION

Sea Level Rise Workshop Series

Venice Local Coastal Program, Workshop 2

Venice LCP Update - Sea Level Rise Planning

Overall Project Goals:

1. Develop Venice Sea Level Rise Vulnerability Assessment
2. Identify and prioritize adaptation measures to reduce the risks from sea level rise coastal hazards
3. Draft updated and new Coastal Hazard LCP policies and implementation plan measures for Los Angeles City Council approval and California Coastal Commission certification

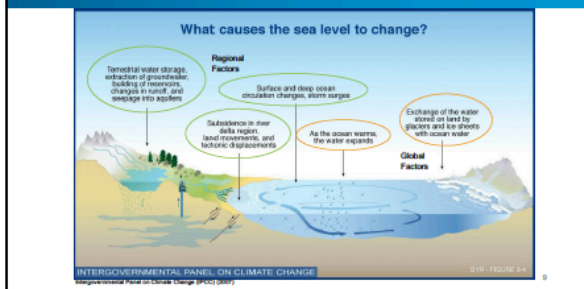


SEA LEVEL RISE PLANNING PROCESS

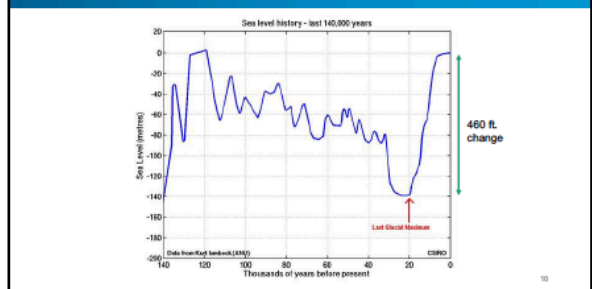
1. Develop range of **sea level rise projections** relevant in LCP planning area
2. Identify anticipated **sea level rise impacts**
3. Assess **risks** to coastal resources and development
4. Identify **adaptation measures** to translate into LCP policy options
5. Draft **updated** and **new** Land Use Plan policies and Implementation Plan measures for Los Angeles City Council approval and California Coastal Commission certification
6. **Implement LCP** and monitor and revise as needed



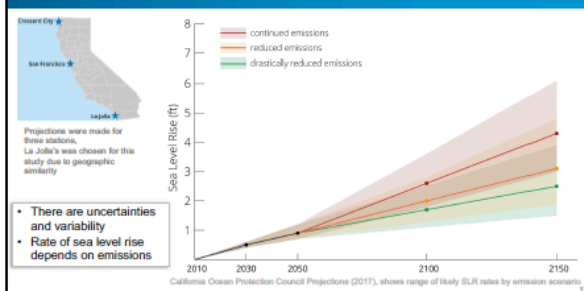
Climate Change and Sea Level Rise



Sea Level Change Over Geologic Time Scales



Sea Level Rise Projections & Variability



Historic Nourishment & Sand Retention

- 35 million cubic yards of sand placed on beaches since 1930s
- Hyperion, Marina Del Rey and Airport development
- Breakwaters, groins and jetties have helped retain wide beaches





CALIFORNIA
COASTAL
COMMISSION

Sea Level Rise Workshop Series

Venice Local Coastal Program, Workshop 2

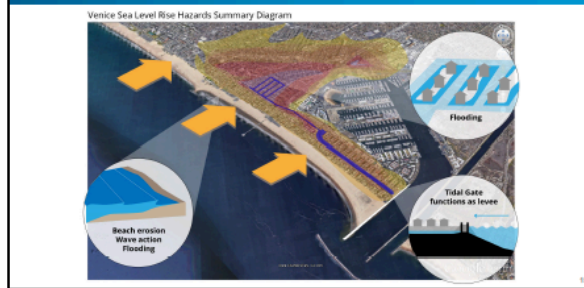
Historic Hazards ~1940s



Historic Hazards ~1980s



Coastal Hazards Overview



Hazards

	Cause:	Effect:
Beach Erosion	<ul style="list-style-type: none"> ➢ Reduced sediment supply ➢ Large wave events ➢ Sea level rise 	<ul style="list-style-type: none"> • Chronic erosion • Seasonal erosion • Sea level rise erosion

Hazards

	Cause:	Effect:
Wave Action	<ul style="list-style-type: none"> ➢ Large wave events ➢ High water levels + waves ➢ Erosion + waves 	<ul style="list-style-type: none"> • Runup depends on shore type • Overtopping & flooding • Direct wave damage

Hazards

	Cause:	Effect:
Flooding	<ul style="list-style-type: none"> ➢ High ocean water levels ➢ High groundwater levels ➢ Extreme rainfall ➢ Wave overtopping 	<ul style="list-style-type: none"> • Flooding of low-lying development • Reduced drainage capacity

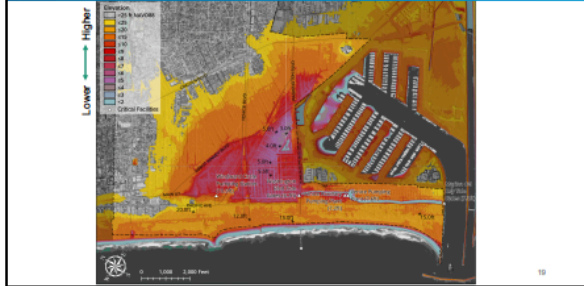


CALIFORNIA
COASTAL
COMMISSION

Sea Level Rise Workshop Series

Venice Local Coastal Program, Workshop 2

Elevation Map



Two Tide Gate Systems

Overview:

Ballona Lagoon & Canal District Tide Gates

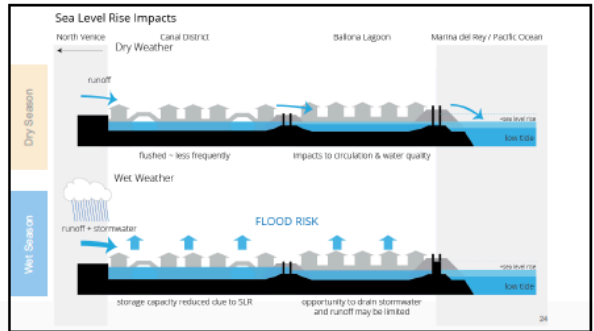
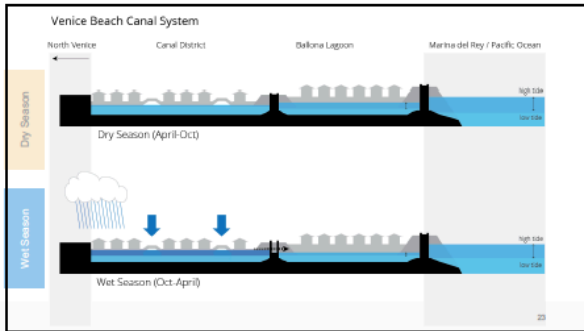
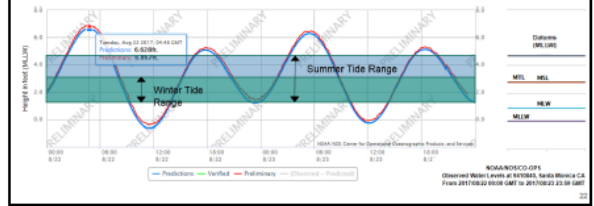
Key Questions:

1. How do the tide gates function today?
2. How might sea level rise impact these functions?



Two Tide Gate Systems (cont.)

- Gates control tidal range of Ballona Lagoon and Venice Canal District
- Drained at low tide then allowed to refill up to mean sea level or mean high water
- Venice Canals are flushed ~ twice a week at low tides





Sea Level Rise Workshop Series Venice Local Coastal Program, Workshop 2

SEA LEVEL RISE PLANNING PROCESS

1. Develop range of **sea level rise projections** relevant in LCP planning area
2. Identify anticipated **sea level rise impacts**
3. Assess **risks** to coastal resources and development
4. Identify **adaptation measures** to translate into LCP policy options
5. Draft **updated** and **new** Land Use Plan policies and Implementation Plan measures for Los Angeles City Council approval and California Coastal Commission certification
6. **Implement LCP** and monitor and revise as needed



Venice Vulnerability Assessment Steps

1. Develop a range of sea level rise scenarios from moderate to extreme high projections in the Venice Coastal Zone
2. Identify anticipated sea level rise impacts on coastal community and shoreline assets in the Venice Coastal Zone, such as:
 - Coastal Development
 - Public Access and Recreation
 - Coastal Habitat
 - Socio-Economic Diversity
 - Water Quality
3. Assess risks to coastal resources and development in Venice

Valuable Beach Assets in Venice

- Public Access
- Recreation
- Visitor Serving Amenities
- Habitat
- Coastal Economy

Open House Stations

- Station 1: What is Coastal Hazard planning?
- Station 2: Sea Level Rise Scenarios and Vulnerability Assessment
- Station 3: Sea Level Rise Hazards in Venice Beach Areas & Canal Areas
- Station 4: Venice Local Coastal Program

Feel free to visit tables in any order you please.

Discussion Groups

Format:

1. Introductions
2. Brainstorm on considerations to address in the Vulnerability Assessment (ideas, questions, concerns, topics, etc.)
3. Prioritization with dots

Everyone has equal opportunities to participate!

Tips for Productive Discussions

- Let one person speak at a time
- Help to make sure everyone gets equal time to give input
- Keep your input concise so others have time to participate
- Actively listen to others and seek to understand their perspectives
- Offer ideas to address questions and concerns raised by others



CALIFORNIA
COASTAL
COMMISSION

Sea Level Rise Workshop Series

Venice Local Coastal Program, Workshop 2

Next Steps for Public Input and Involvement in Sea Level Rise Planning

- > **Public Workshop #3: March 2018**
 - Sea level rise scenarios
 - Draft vulnerability assessment
 - Adaptation strategy concepts
 - Community input
- > **Public Workshop #4: May 2018**
 - Draft adaptation strategies
 - Community input



www.venicecp.org

31

Preliminary Updated FEMA Insurance Maps

- Preliminary maps are anticipated for certification in 2018
- FEMA analysis does not include affects of sea level rise



32





CALIFORNIA
COASTAL
COMMISSION

Sea Level Rise Workshop Series Venice Local Coastal Program, Workshop 2

Appendix B

Input from Open House Stations



Sea Level Rise Workshop Series

Venice Local Coastal Program, Workshop 2

Station 1 Notes: What is Coastal Hazard Planning?

- Existing vs. future structures and guidelines?
 - Tiered measures
 - Prioritization where risk is higher and triggers
- Local Coastal Plan (LCP) timeline
 - Policies developed by late '18
- New Orleans/Katrina - FEMA process, adaptation after Katrina ('05) as applicable to Venice
- Global Sea Level Rise (SLR) - climate change “best available science” for SLR
 - Ocean Protection Council
 - Rates of SLR - Northern or Southern California
- Protected resources - habitat, cultural resources
- Venice as a special community
- Development - basements
 - 2-5 feet below grade - drainage issues
 - Canals - Ocean Ave → basement level
- Infrastructure - disc in vulnerability assessment
- Next SLR meeting → Conclusions of V.A.
- Concepts for adaptation?
- 3rd workshop - adaptation recommendations (feedback)
- Public comment to give a chance to weigh in
 - after 3rd workshop - draft - posted on cityofla.org; one year in the future
- CCC - res. adaptation guidance - update?
- Pump plants pt. of V.A.
- LCP - process
- S.M. LCP - as model
- SF - adds to property tax

Station 2 Notes: Sea Level Rise Scenarios and Vulnerability

- How much sea level rise up to today? At what rate?
- Where else is working on this? → See Coastal Commission website for local jurisdictions that have received grants so far and stage of process
- Does beach sand go away or move horizontally along beach?
- How do James Hansen’s predictions for sea level rise compare to models the team is using?
- How do tidal gates work together? Do canals just flush to and fill back up from Ballona Lagoon? Or does water from canals get all the way out to the marina?
- Remembers Ballona Lagoon being sealed (sometimes unsuccessfully?) with concrete
- What about flooding from the marina side? (water will be at sea level/tide level)
- How will storms be affected by SLR? El Niño?
- Is 6-foot rise by end of century actually too conservative an estimate? Look at even higher SLR too, with most updated estimates.
- What are the factors that cause different SLR across state? (difference between Crescent City/SF/La Jolla) → Onshore winds, regional factors
- In winter, build berms on beach, Nov-March. Build up with rocks and sand. The county does this across SaMo Bay?
- What will be impact in 10 years? 20 years?



Sea Level Rise Workshop Series Venice Local Coastal Program, Workshop 2

- People want to know near-term and long-term
- Marina - County owns and the long-term leases there are 30 years
- How does permitting work in the marina? How/when is CA Coastal Commission involved?

Station 3 Notes: Sea Level Rise Hazards in Beach Area and Canals Area

- Ocean Avenue floods during high tide
- In the Marina Del Rey there is a lot of development — units, Trader Joe's. The area was up zoned — intense.
- Is it possible to update the tide gates?
- Are there areas where more tide gates can be placed?
- What impact will all the development in the Marina Del Rey have in Venice?
- Will specific species be protected in the LCP?
- Where does runoff come from?
- What is capacity of system and county detention basin?
- Options for adaptation — storage or pump

Station 4 Notes: Venice LCP (Venice Local Coastal Program)

- Other cities have LCPs? Until recently, very few.
- Benefit of LCP? Now in some areas, need 2 permits— one for City of LA and one from the Coastal Commission. Streamline to one.
- Costs always borne by local community — no charge
- We're just focusing on Venice. Coordination with other jurisdictions? Yes.
- Issue: Vulnerability of species, habitat
- Conflict between environmental and socioeconomic impacts? Priority for Coastal Act: protect coastal resources 1st, Access 2nd, development after.
- Concerns that estimates of sea level rise are ext. conservative
- Concern that housing is super expensive to build here — also think about existing development that will need retrofitting. Simplify process, include more housing types, abundant housing.
- We're looking at how to incentivize/require minimum number of units - exploring
- Density bonuses must be consistent with coastal act
 - Concerns
- Public infrastructure contribution to SLR adaptation
- Worry about infrastructure failures (sewer), and ability to support more density



CALIFORNIA
COASTAL
COMMISSION

Sea Level Rise Workshop Series Venice Local Coastal Program, Workshop 2

Appendix C

Input from Small Group Discussions



Sea Level Rise Workshop Series Venice Local Coastal Program, Workshop 2

Group 1

- Contingencies for federally listed species (snowy plover, least tern and grunion) **(3 dots)**
- Overlap with City's Specific Plan and the County's plan for beaches and habitat areas **(3 dots)**
- Protect existing structures (elevation?) in the process to redevelop/retrofit to protect **(3 dots)**
- Milwood: has a lot of historic homes; special considerations for our historical resources? It's pretty inland, SLR probably not going to flood. **(2 dots)**
- But need more homes in Venice **(2 dots)**
- Infrastructure to protect from flooding/superstorms **(2 dots)**
- Glaciers and SLR - any backup **(1 dot)**
- Past and future environmental and human needs **(1 dot)**
- Building of basements throughout Venice **(1 dot)**
- Pumping out groundwater? And water table? Example – Electric Avenue pumping water, 6 months **(1 dot)**
- Yes, there are other communities looking at SLR
- Very little green on the map
- Coastal habitat component
- Or digging deeper to make house "higher"
- Walk streets have drainage issues
- How do we start paying for this now?
 - Preparing for sea level rise
 - Housing
 - Superstorms
 - Habitat protection
- It will get more expensive the longer we wait
- Everything to consider: gentrification
- CO₂ emissions

Group 2

- Specific community character of Venice **(3 dots)**
- Planning infrastructure in advance for adaptation **(3 dots)**
- Coordination between City and County (and State), on infrastructure, risks, and adaptation **(2 dots)**
- Can California Coastal Commission take a proactive role to help with inter-jurisdictional coordination? **(2 dots)**
- Instant flooding **(2 dots)**
- Habitat value in canals for nesting and migrating birds **(2 dots)**
- Concerned about people who live on the canals - both current canals and filled in canals **(2 dots)**
- Public transit routes and emergency access **(2 dots)**
- Big development projects in coastal zone **(2 dots)**
- Maintain open space for community as an adaptation strategy for flood control **(2 dots)**
- Protecting historic resources from sea level rise **(1 dot)**
- Critical transportation infrastructure, public access in emergencies, Pacific Avenue, Abbott Kinney Boulevard, Rose Avenue, Palms Boulevard, and Lincoln Boulevard **(1 dot)**
- Permit supportive housing project **(1 dot)**
- Other big properties – MTA lot, Post Office at Grand and Riviera, federal property **(1 dot)**
- Storm drains on Windward Avenue



CALIFORNIA
COASTAL
COMMISSION

Sea Level Rise Workshop Series Venice Local Coastal Program, Workshop 2

- Beach habitat – south-facing beach grunion run
- Cultural resources, boardwalk and more!
- Concerned about pumping plants in the low-lying areas. Also the unitary sewer (see map)
- New CDP application to expand sanitary sewer right now?
- More information sewer starts there (Hurricane Way) will go under Via Dolce to Via Marina. LA City is in charge of all sewer even in County (Marina Del Ray); City was going to put sewer along beach, County sued, now moved; Sewer expansion needed because of age and new development
- Enhanced project on Del and S Venice Blvd
- Historic structure north of Post Office (old Lockmaster's house)



Notes:

- Keep as open space
- Need for flood management capacity



CALIFORNIA
COASTAL
COMMISSION

Sea Level Rise Workshop Series

Venice Local Coastal Program, Workshop 2



Notes:

- Need a strategy for future capacity
- Need to add Survey LA – identified historic districts
- Current use very low – public property is being sold. Don't sell!



CALIFORNIA
COASTAL
COMMISSION

Sea Level Rise Workshop Series Venice Local Coastal Program, Workshop 2



Notes:

- Habitat
- Grunions
- Post office
- Lost canals and historic resources
- Cultural resources
- Strategy for open space and water storage
- Transit and emergency access

Group 3

- Vulnerability of canals – MDR increased density **(4 dots)**
- Boardwalk damage **(3 dots)**
- Impact of duck pond on Silver Triangle, storm drains **(3 dots)**
- Lack of information on sea level rise online **(3 dots)**
- Spreading the word using local, historical photos **(3 dots)**
- Pump stations – flood issue? **(2 dots)**
- Erosion, dune restructuring (views) **(2 dots)**
- Urban adaptation method considerations **(1 dot)**
- Awareness/housing property value **(1 dot)**
- El Niño – short-term response **(1 dot)**
- Beach – sewer system damage? **(1 dot)**



Sea Level Rise Workshop Series Venice Local Coastal Program, Workshop 2

- Community input – headlines (short advertisement statements), outreach **(1 dot)**, major headlines, internet, YouTube **(1 dot)**
- Venice population (40,000) small representation at this workshop, highly educated group and community in general

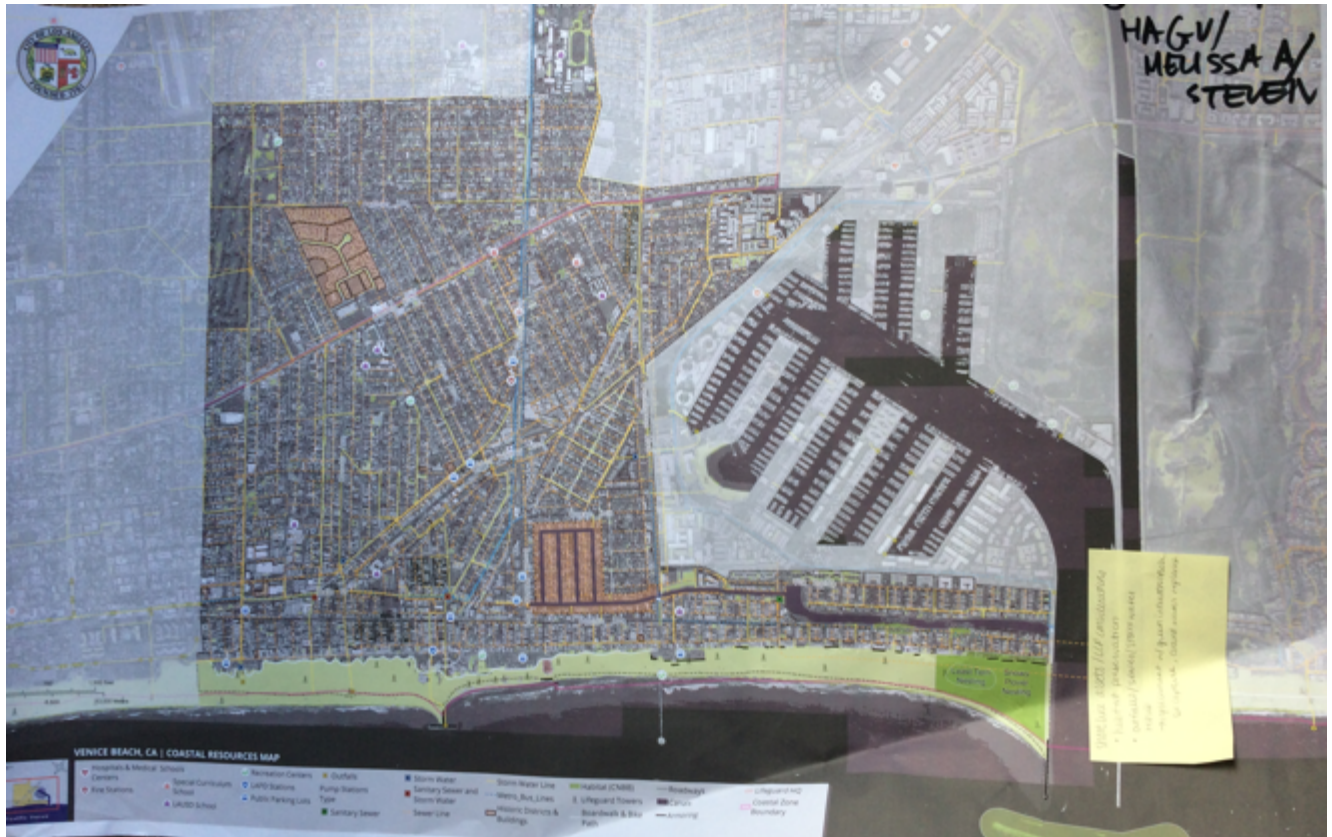
Group 4

- How closely are communities working together beyond Venice? Prioritization for one area over another? Could plans in one area (to mitigate flooding, for example) be detrimental to another? Work together. **(6 dots)**
- Community awareness/PR for public participation **(5 dots)**
- Sand is habitat for birds **(4 dots)**
- Economic, commercial impact. Sand/beach line of defense. Beach for public. Private homes not the issue. Maintain commercial. **(3 dots)**
- How policy affects what businesses, ex. plastic bags. **(3 dots)**
- Public facilities, schools should have underground water basins **(3 dots)**
- Tide gates, shoreline should be line of defense **(2 dots)**
- Political priorities and sensitivities **(2 dots)**
- Inundation of sewer lines/ going to redo sewer lines/green infrastructure **(2dots)**
- Crows, nesting terns **(2 dots)**
- Improving ability to maintain sand/beach area **(2 dots)**
- Tide gates - assessment given sea level rise **(2 dots)**
- Impact of further development in Marina, Venice on Sea level rise **(1 dot)**
- New homes on stilts/ rebuilt on stilts **(1 dot)**
- “Heart of Venice” - Westminster Avenue historic monuments/single family districts **(1 dot)**
- Big view - sea levels rising everywhere. Looking at people. Global vs. local. Sand expansive **(1 dot)**
- Flooding from rainwater, too - 1983, ran down Venice Blvd and into canals, people couldn’t get out **(1 dot)**
- Future evaporation



CALIFORNIA
COASTAL
COMMISSION

Sea Level Rise Workshop Series Venice Local Coastal Program, Workshop 2



Notes:

- Shorelines assets / LCP considerations
 - Habitat preservation
 - Outfalls/sewer/stormwater rehab → replacement with green infrastructure. SW capture, ground water replenish



CALIFORNIA
COASTAL
COMMISSION

Sea Level Rise Workshop Series Venice Local Coastal Program, Workshop 2

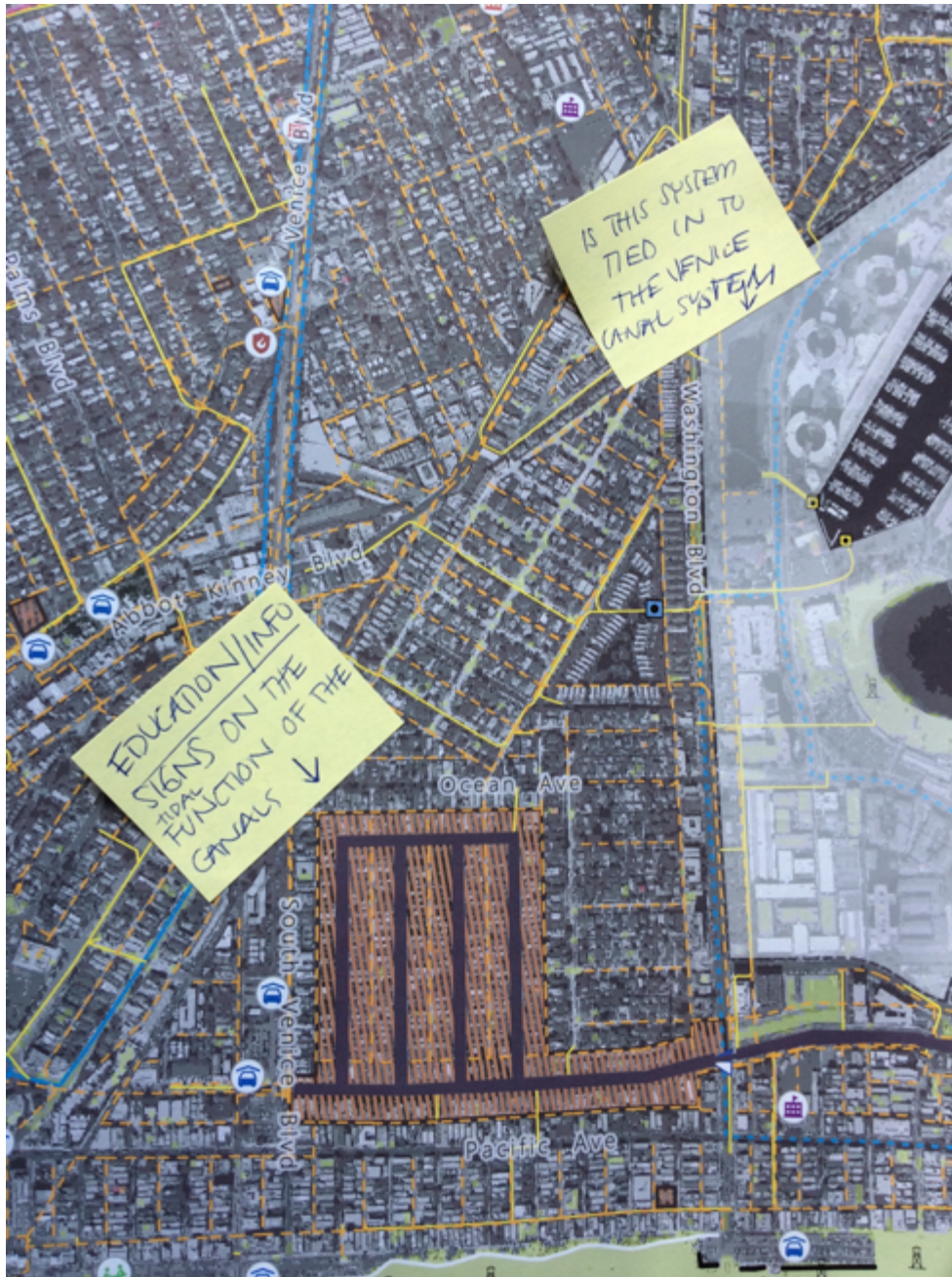


See below for zoomed in comments of each note.



CALIFORNIA
COASTAL
COMMISSION

Sea Level Rise Workshop Series Venice Local Coastal Program, Workshop 2



Notes:

- Education /info → Signs on the tidal function of the canals?
- Is this system tied into the Venice Canal system?



CALIFORNIA
COASTAL
COMMISSION

Sea Level Rise Workshop Series Venice Local Coastal Program, Workshop 2

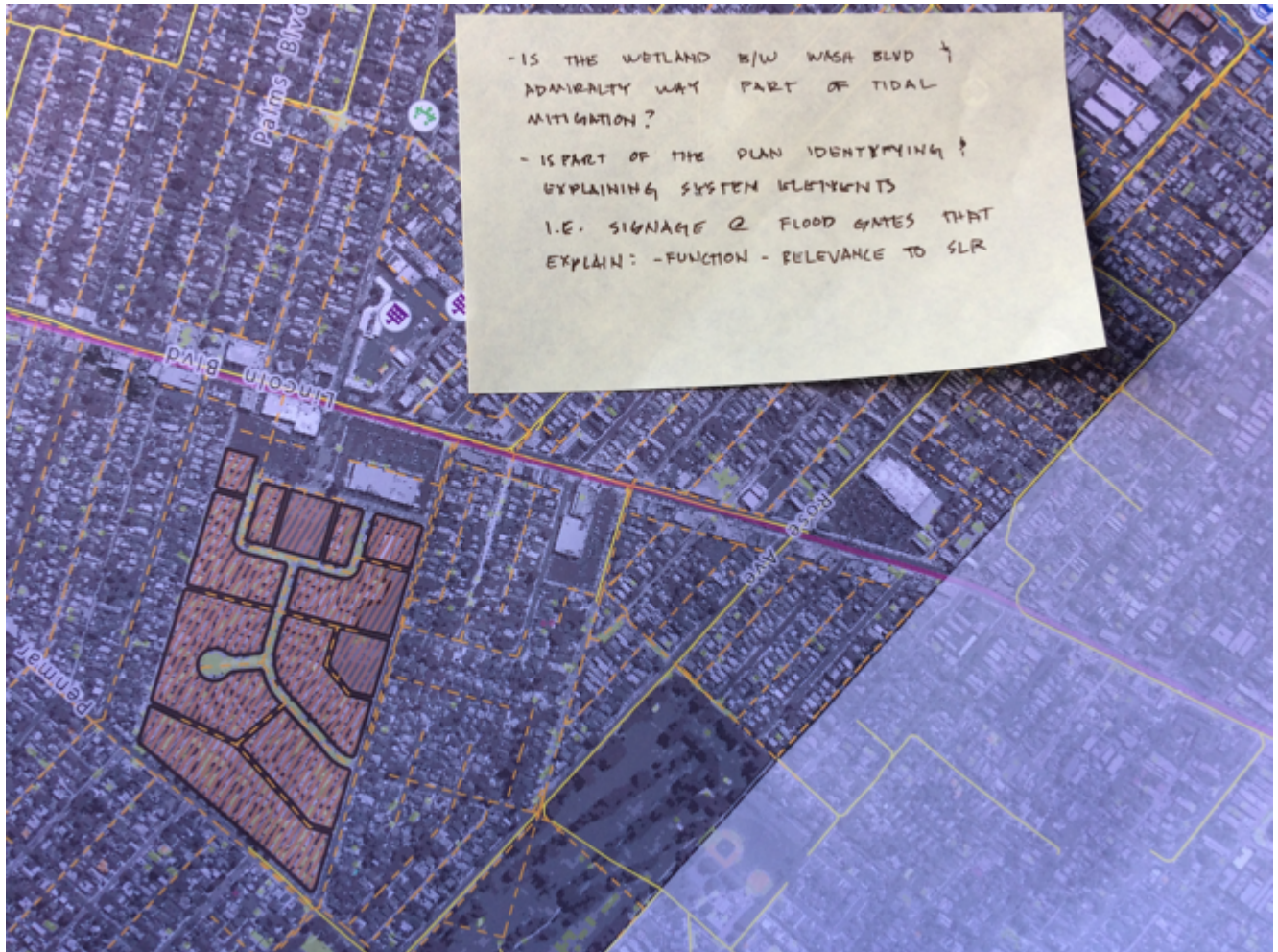


Notes:

- Water retention basin (Penmar Park)



Sea Level Rise Workshop Series Venice Local Coastal Program, Workshop 2



Notes:

- Is the wetland between Washington Blvd and Admiralty Way part of tidal mitigation?
- Is part of the plan identifying and explaining system elements i.e. signage at flood gates that explain:
 - Function
 - Relevance to sea level rise



CALIFORNIA
COASTAL
COMMISSION

Sea Level Rise Workshop Series Venice Local Coastal Program, Workshop 2



Appendix D Input Cards



CALIFORNIA
COASTAL
COMMISSION

Sea Level Rise Workshop Series Venice Local Coastal Program, Workshop 2

Form 1:

  **Sea Level Rise Workshop Series
Venice Local Coastal Program, Workshop 2**

Input Form

During the open house stations, use the space below to record your perspectives, ideas, and questions. The Local Coastal Program project team will carefully review and consider all completed input forms as well as the workshop discussions during the sea level rise and coastal hazard planning for Venice.

Station 1: Coastal Hazard Planning

Station 2: Sea Level Rise Scenarios and Vulnerability Assessment

Station 3: Sea Level Rise Hazards in Beach Area and Canals Area

Station 4: Venice Local Coastal Program

*Constant input of stakeholders?
CDP.*

*risks to
CULTURAL ASSETS - visitation being
Required*

*HABITAT
VULNERABILITY?*

STORAGE CAPACITY?

More questions on back

For more information and to stay up to date, visit: www.venicelcp.org

[blank second page]



CALIFORNIA
COASTAL
COMMISSION

Sea Level Rise Workshop Series

Venice Local Coastal Program, Workshop 2

Form 2:



[blank first page]



CALIFORNIA
COASTAL
COMMISSION

Sea Level Rise Workshop Series

Venice Local Coastal Program, Workshop 2

  **Sea Level Rise Workshop Series**
Venice Local Coastal Program, Workshop 2

What input do you have on coastal community and shoreline assets, questions, concerns, and ideas that the team should consider during the Vulnerability Assessment for Venice?

What is planned post - The Big One

Please use the space below to provide additional input, ideas, questions, and considerations for sea level rise planning in Venice.

*Is climate changes speed up faster than anticipated, how advanced are CC plans?
? Worst Case Scenario vs. "Don't know yet"?*

Completed input forms can be mailed or emailed to:
Laura MacPherson
Venice.LCP@lacity.org
200 N. Spring St. Rm 763
Los Angeles CA, 90012

The online survey can be found at www.venicelcp.org under "Get Involved."

Optional: Please provide us with your **contact information** so we can keep you **up-to-date** on the Venice Local Coastal Program!

Name _____

Email _____

Address _____

For more information and to stay up to date, visit: www.venicelcp.org

Form 3:



CALIFORNIA
COASTAL
COMMISSION

Sea Level Rise Workshop Series

Venice Local Coastal Program, Workshop 2

[blank first page]

Sea Level Rise Workshop Series
Venice Local Coastal Program, Workshop 2

What input do you have on coastal community and shoreline assets, questions, concerns, and ideas that the team should consider during the Vulnerability Assessment for Venice?

Please use the space below to provide additional input, ideas, questions, and considerations for sea level rise planning in Venice.

Please use key messages in short, punchy headlines ^{to increase} public awareness - E.g., sea level rise is real. We're planning now. (w/ accompanying photos & graphics)

Produce short (1-2 min) YouTube videos to illustrate SLR impacts.

Develop strong on-line materials.

Completed input forms can be mailed or emailed to:
Laura MacPherson
Venice.LCP@lacity.org
 200 N. Spring St. Rm 763
 Los Angeles CA, 90012

The online survey can be found at www.venicelcp.org under "Get Involved."

Optional: Please provide us with your **contact information** so we can keep you **up-to-date** on the Venice Local Coastal Program!

Name _____

Email _____

Address _____

For more information and to stay up to date, visit: www.venicelcp.org



CALIFORNIA
COASTAL
COMMISSION

Sea Level Rise Workshop Series

Venice Local Coastal Program, Workshop 2

Appendix E

Online Input



CALIFORNIA
COASTAL
COMMISSION

Sea Level Rise Workshop Series Venice Local Coastal Program, Workshop 2

[11/20/2017 5:15 PM]

What input do you have on coastal community and shoreline assets, questions, concerns, and ideas that the team should consider during the Vulnerability Assessment for Venice?

- We need to prepare for the future through progressive mitigation and alteration of the coastline to thwart sea rise. The best way possible is to activate the beach, utilizing it for events and making it something more than a wide strip of sand that people complain about and that trolls demand that the homeless be able to use as a place to camp and live.

Please use the space below to provide additional input, ideas, questions, and considerations for sea level rise planning in Venice.

- Plant species of plants to reduce coastal erosion. USE THE BEACH. It is not some pristine museum made for hoboes to camp on and people to look longingly at

[11/27/2017 11:36 AM]

What input do you have on coastal community and shoreline assets, questions, concerns, and ideas that the team should consider during the Vulnerability Assessment for Venice?

- I think the team should investigate beach access, beach width, and vulnerabilities to long term erosion. The use of the temporary man made sand berms in the winter time can be used as a case study to potentially expand the program by having year long berms that are supported with native dune plant communities.

Please use the space below to provide additional input, ideas, questions, and considerations for sea level rise planning in Venice.

- Identifying sources of sand for beach nourishment, investigating dune construction/restoration, and understanding how the tide gates are operated are crucial for the city to consider. Additionally, long term active transportation will be vital for the area. This planning process should consider permanent walk/bike only on Abbot Kinney Blvd and not allow cars in the commercial section of that street (roughly Westminster to Venice Blvd). This can expand outdoor space of businesses, provide seating, and open up opportunities for more frequent farmers markets and pop up shops, providing consistent funding to the area. The loss of parking could be mitigated with possible vertical expansion of existing lots and management of traffic flow in the arterial corridors.

[12/1/2017 5:58 PM]

What input do you have on coastal community and shoreline assets, questions, concerns, and ideas that the team should consider during the Vulnerability Assessment for Venice?

- The bottom line is that Venice is Los Angeles' only city beach on the SM Bay. City hall may think that it's appropriate to mandate sever measures for beachside property, but that won't save our beaches. Without those beaches we lose our tourism AND our Venice beach lifestyle and community. The solution is to stop the rising seas from effecting our beach which is obviously very costly. A lesser solution is very short sighted and far more costly long term.



CALIFORNIA
COASTAL
COMMISSION

Sea Level Rise Workshop Series Venice Local Coastal Program, Workshop 2

Please use the space below to provide additional input, ideas, questions, and considerations for sea level rise planning in Venice.

- Venice Beach is sorely in need of real estate improvements. We're short on hospitality and long on some of the ugliest architecture the civilized world has every known. Projects on the boardwalk are dealing in City Hall and CCC needlessly, under the pretense that they cannot perform in the wake of a wave uprush. This is simply ludicrous. There isn't a building on the boardwalk that wouldn't suffer from a major wave uprush so why should new development be blocked at the expense of the present? And why should the land owners with so much to offer our town be held back from developing much needed housing, hospitality venues, restaurants, etc. ?