



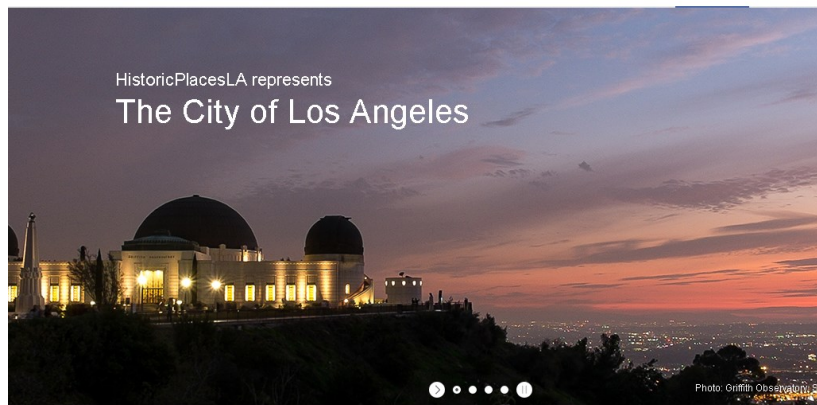
CITY AND GETTY LAUNCH HISTORICPLACESLA – LOS ANGELES' NEW CULTURAL RESOURCES INVENTORY

On February 24th the City of Los Angeles and the Getty Conservation Institute launched HistoricPlacesLA.org, the first online information and management system specifically created to inventory, map, and describe Los Angeles significant historic resources. The system enables robust searches and mapping of the rich information on the city's historic resources.

Although data entry into HistoricPlacesLA is in progress, the goal is to include all of the city's Historic-Cultural Monuments and Historic Preservation Overlay Zones (HPOZs), properties listed in the National and California registers, and information gathered through SurveyLA, the citywide survey of historic resources. SurveyLA represents the most ambitious historic resources survey in the United States and is a multi-year public/private partnership be-

tween the City and the Getty, including both the Getty Conservation Institute and the Getty Foundation.

To view a map showing which Community Plan Areas of the city already have SurveyLA data available through HistoricPlacesLA, please click [here](#).



Home page for HistoricPlacesLA

The Office of Historic Resources was honored to be joined by Mayor Eric Garcetti for the launch of the new system, at a February 24 press event at L.A. City Hall. Mayor Garcetti noted, "Let's end the notion that L.A. is a city that doesn't value its history. Let's just

put that to rest here, today." Mayor Garcetti posted online a visually compelling [video](#) based on his remarks at the event.

(Continued on page 2)

SURVEYLA COMPLETES SURVEY FINDINGS FOR WILSHIRE COMMUNITY PLAN AREA

The findings for SurveyLA, the Los Angeles Historic Resources Survey, continue to be posted on the SurveyLA web site at www.preservation.lacity.org/survey/reports. Among the latest results to be posted is the survey covering the Wilshire Community Plan Area, which includes the Wilshire Boulevard corridor, Wilshire Center, Koreatown, Beverly-Fairfax District and many other communities rich in historic resources. This article is the 12th in a series of features on some of the interesting "finds" from SurveyLA.

Mackey Apartments, 1137 S. Cochran Ave., an excellent example of an International Style multi-family residence in the Wilshire area, designed by master architect Rudolf M. Schindler.

Raymond Chandler Residence, 6520 Drexel Ave., significant as the home of novelist and screenwriter Raymond Chandler during a productive period, from 1943 to 1946, when Chandler worked for Paramount Studios and made his debut in screenwriting with

(Continued on page 3)

INSIDE THIS ISSUE:

<i>Council Adopts New Ordinances to Protect Neighborhood Character</i>	5
<i>L.A.'s Newest Historic-Cultural Monuments</i>	6
<i>Help Shape Los Angeles' Historic Districts!</i>	6

HISTORICPLACESLA LAUNCH

(Continued from page 1)



The February 24 press announcement of HistoricPlacesLA in the Tom Bradley Room at L.A. City Hall



From left, Tim Whalen, Director, Getty Conservation Institute; Los Angeles Mayor Eric Garcetti; Ken Bernstein, Manager, Office of Historic Resources; Linda Dishman, Executive Director, Los Angeles Conservancy

Tim Whalen, Director of the Getty Conservation Institute, provided a demonstration of the new system at the event. Linda Dishman, Executive Director of the Los Angeles Conservancy, and real estate developer Wayne Ratkovich of the Ratkovich Company also spoke at the launch event, emphasizing the tremendous value of the new system for the preservation community as well as property owners and developers.

HistoricPlacesLA gives City government a powerful tool to use fuller knowledge of our built heritage to plan more effectively for our future. HistoricPlacesLA uses the [Arches](#) system—an open-source information platform built to inventory and ultimately protect cultural heritage places internationally, developed

by the Getty and World Monuments Fund, and customized for Los Angeles. HistoricPlacesLA unites the Arches framework with the rich data collected for SurveyLA, along with information on thousands of designated historic resources in Los Angeles.

The launch of HistoricPlacesLA.org is the culmination of a multi-year partnership between the City and the Getty, including both the Getty Conservation Institute and Getty Foundation, to complete [SurveyLA](#), the largest, most ambitious historic resources survey project in the nation. A project of this scope and ambition simply could not have occurred without the leadership of the Getty, which has given a tremendously enduring gift to its home city.

For more information on HistoricPlacesLA, see an [article](#) on the Getty Iris Blog.



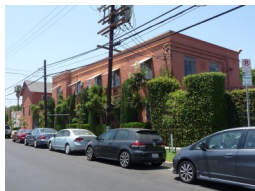
Cultural Resources searchable through HistoricPlacesLA



SURVEYLA WILSHIRE COMMUNITY PLAN AREA FINDINGS

(Continued from page 1)

screen adaptations of literary works including James M. Cain's novel "Double Indemnity" and his own novel, "The Big Sleep."



Clune Studios (Raleigh Studios), a 10-acre lot in Hancock Park, bounded by Melrose Avenue to the north, Clinton Street to the south, North Van Ness Avenue to the east and North Bronson Avenue to the west, that is thought to

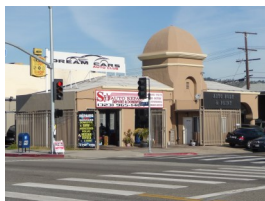
be the oldest continuously operating motion picture studio in the nation (since 1915); Raleigh Studios purchased the property in 1979.

Christ the King Roman Catholic Church, 627 S. Arden Blvd., a 1927 church that is an excellent example of Romanesque Revival institutional architecture, designed by noted ecclesiastical architect Thomas Franklin Power and significant for its quality craftsmanship and Spanish Colonial Revival details.



1147 S. Arapahoe St., a 1900 single-family home in the American Foursquare style, representing a rare remaining example of an intact turn-of-the-century residence in the Wilshire area.

7205 Beverly Blvd., a 1927 service station designed in the Moorish style that is an early example of an auto service station in the area; most service stations from this time period have not survived.



El Coyote, 7312 Beverly Blvd., significant as the long-time location of El Coyote restaurant, which was founded in 1931 and moved to this location in 1951; it has been in continuous operation here ever since.

CBS Television City, 7800 Beverly Blvd., an excellent example of an International Style television broadcasting studio, designed by noted architectural firm Pereira and Luckman, and also significant as the location since 1952 of CBS' major television production and broadcasting studio, operating continuously as one of the first and largest complexes built expressly for television production and broadcasting.



8056 W. Beverly Blvd., a 1941 building that is significant as a historic synagogue associated with the Orthodox Jewish community and the community's movement westward. Congregation Beth Israel, founded 1902, is the oldest existing Orthodox congregation in Los Angeles; it moved from Bunker Hill to this building (originally the Laurel Theatre, built 1941) circa 1960 and has been in continuous operation at this location ever since.

8269 W. Beverly Blvd., a 1953 commercial vernacular structure that is the founding and long-term location of the Society of



(Continued on page 4)

What Is SurveyLA?

SURVEYLA: THE LOS ANGELES HISTORIC RESOURCES SURVEY PROJECT is the first-ever comprehensive inventory of our city's historic resources.

The survey findings will have a multiplicity of benefits and uses: it will help direct future growth, shape the revision of Los Angeles' 35 Community Plans, streamline environmental review processes, provide opportunities for public education, assist in disaster planning, and spur heritage tourism and the marketing of historic neighborhoods and properties.

The J. Paul Getty Trust and the City of Los Angeles have entered into a grant agreement for SurveyLA under which the Getty has committed to providing up to \$2.5 million to the project, subject to matching requirements by the City. Field surveys and evaluations will occur through 2016. The Getty Conservation Institute (GCI) is also providing technical and advisory support for SurveyLA. For more information visit the SurveyLA website, www.SurveyLA.org.



SURVEYLA WILSHIRE COMMUNITY PLAN AREA FINDINGS

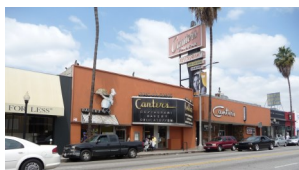
(Continued from page 3)

Children's Book Writers and Illustrators organization. Founded here in 1971, the organization now has over 70 regional chapters and 22,000 members.



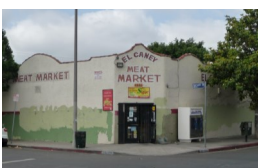
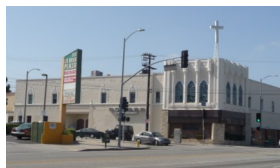
357 N. Citrus Ave., a 1938 single-family home that is an excellent example of International Style single-family residential architecture, designed by master architect Gregory Ain.

Canter's Delicatessen, 419 N. Fairfax Ave., significant as the long-time location of Canter's, which began in Boyle Heights in 1931, moved to 439 N. Fairfax Ave. in 1948, and then to this location (originally a theater) in 1953, where it developed a strong historic association with the local Jewish community.



Tom Bergin's, 840 S. Fairfax, significant as the long-term location of Tom Bergin's restaurant, founded at the corner of La Brea and Wilshire in 1936. The building was moved to this site in 1947 and reopened in 1949; with the exception of a brief closure during an ownership change in 2013, it has been in operation here ever since.

847 S. La Brea Ave., significant as the location of a movie theater and the Cherry Blossom restaurant, which both served as important gathering places for the local Japanese American community in the postwar period. Originally constructed as the Fox La Brea Theatre in 1926, the property later became the Toho La Brea Theatre, managed by the Japanese production company Toho Studios.



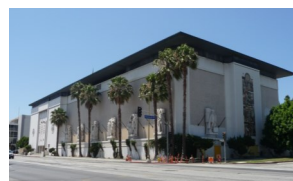
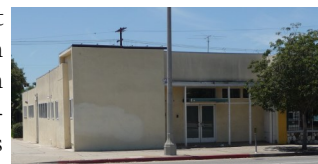
4600 Maplewood Ave., a rare example of a 1910s neighborhood market building in the Wilshire area and one of few remaining examples from this period.

1062 S. Robertson Blvd., a 1911 Spanish Colonial Revival church that is a rare example of a 1910s church building in the area; originally the Robertson Boulevard Community Methodist Episcopal Church, currently the Kabbalah Center.



Del Mar Theater, at 5036 W. Pico Blvd., a 1930 Art Deco theater that is an excellent example of a pre-World War II neighborhood movie theater.

Beth Chayim Chadashim, at 6000 W. Pico Blvd., the location of the first known gay and lesbian synagogue in the world. The still-active congregation, which was founded in 1972 and originally met at the Metropolitan Community Church, was located here from 1977 until 2011. Beth Chayim Chadashim was the first LGBT synagogue to have its own building.



Scottish Rite Masonic Temple, 4357 Wilshire Blvd., a 1960 structure associated with the Scottish Rite of Freemasonry, a fraternal organization that played a significant role in the social and cultural

development of Los Angeles in the postwar era. It is also an excellent example of New Formalist institutional architecture and the work of noted Southern California artist and designer Millard Sheets.

Post-War House/House of Tomorrow, at 4950 Wilshire Blvd., a 1946 Contemporary Ranch/Mid-Century Modern House commissioned by developer Fritz B. Burns and designed by notable local architects Wurdeman and Becket as a highly publicized model home to serve as a prototype of modern suburban living.



Melrose Avenue Grace Church, 4014 W. Melrose Ave., a rare example of an institutional building in Los Angeles featuring an octagonal plan, built in 1910, exhibiting design characteristics of the octagon house model popularized in the 19th century by Orson Squire Fowler.

DuBarry Apartments, 3471 W. 5th St., a 1929 French Revival (Norman) apartment building, designed by architect S. Charles Lee, which is a notable example of a 1920s apartment building, featuring a distinctive rooftop sign with neon lettering.



(Continued on page 5)

COUNCIL ADOPTS NEW ORDINANCES TO PROTECT NEIGHBORHOOD CHARACTER

To address growing community concerns about out-of-scale new construction in single-family neighborhoods, the Los Angeles City Council on March 25 approved two Interim Control Ordinances (ICOs), drafted by Department of City Planning staff. One ordinance prohibits demolitions and substantial alterations of homes in five proposed Historic Preservation Overlay Zones (HPOZs), and a second ordinance limits the scale of new construction in 15 additional neighborhoods. Both ordinances took effect immediately upon adoption.

These ICOs have been enacted for an initial 45-day period, during which they may be renewed for a period of up to two years. The ordinances are meant to provide immediate relief from demolitions and mansionization activity in areas experiencing significant change, providing time for the department to craft permanent development regulations in these neighborhoods.

The Department is currently completing the hiring process for planners to help staff a new neighborhood conservation unit, which will assist in pursuing three follow-up steps to the ICOs. First, Planning staff will prepare amendments to the Baseline Mansionization Ordinance (BMO), originally enacted in 2008, to close loopholes that have led to the construction of larger homes. Second, the Department will also move forward to adopt five new HPOZs over the next two years, in significant



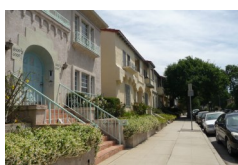
Street view of Hi Point Street in Carthay Square

and cohesive historic neighborhoods: Carthay Square, Sunset Square, Holmby-Westwood, the El Sereno Berkshire Craftsman District, and Oxford Square. And finally, the Department will create permanent, contextual zoning tools to address neighborhood character in the other ICO neighborhoods through re:code LA, the comprehensive re-write of Los Angeles' 1946 zoning code.

The Department has prepared two new Zoning Information files, providing instructions to City staff in implementing the Interim Control Ordinances. To review the Zoning Information and text of the new ordinances, visit <http://zimas.lacity.org/documents/zoneinfo/ZI2444.pdf> and <http://zimas.lacity.org/documents/zoneinfo/ZI2443.pdf>.

SURVEYLA WILSHIRE COMMUNITY PLAN AREA FINDINGS

(Continued from page 4)



6th St.- Orange St. Multi-Family Residential Historic District, 221 parcels containing two-story, multi-family residences along West 6th St. and West Orange St., between S. San Vicente Blvd. and S. Fairfax Ave., an intact Period Revival neighborhood from the 1920s to 1950s.

Gramercy Place-St. Andrews Place Residential Historic District, a district of almost exclusively single-family residences located in Wilshire Center on both sides of South Gramercy Place and South St. Andrews Place, between 2nd Street and 3rd Street.

The district of 50 properties is an excellent collection of Arts and Crafts residential architecture from the early 1900s to the 1920s and an excellent example of a streetcar suburb.



Orange Grove Avenue-Gardner Street Multi-Family Residential Historic District, 380 parcels located in the Beverly-



Fairfax neighborhood, bounded by Rosewood Ave. to the north, Beverly Blvd. to the south, both sides of N. Orange Grove Ave. on the west and both sides of N. Gardner St. on the east. The district is a very intact 1920s to 1940s Period Revival neighborhood, originally subdivided by G. Allan Hancock, that is also significant as an early Jewish enclave, representing the earliest westward movement of the Los Angeles Jewish community.

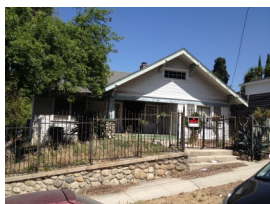
Oxford Square Residential Historic District, including 191 properties on both sides of Victoria Avenue and Windsor Boulevard between Olympic Boulevard on the north and Pico Boulevard on the south, has been proposed as a new Historic Preservation Overlay Zone (HPOZ). Its one- and two-story single-family homes developed between 1907 and 1940 represent a significant concentration of Arts and Crafts and Period Revival residential architecture.



L.A.'S NEWEST HISTORIC-CULTURAL MONUMENTS

The Cultural Heritage Commission and City Council have designated four new Historic-Cultural Monuments (HCMs) between January and March 2015. Los Angeles' newest Monuments include the following:

HCM #1081, 1109 Coronado Terrace House (1109 N. Coronado Terrace)



Built in 1910, this Craftsman style single family home features an arroyo stone porch and pillars to complement the arroyo stone walls characteristic of Coronado Terrace. As the gateway property to Coronado Terrace, this house embodies early real estate development practices northwest of Downtown Los Angeles, now part of Silver Lake.

HCM #1082, Laurel Terrace Street Trees (Cantura St. between Vantage and Rhodes Ave.)

Mature sycamore trees and granite light posts line Cantura Street and Rhodes Avenue in Studio City, serving as an important feature of the Laurel Terrace neighborhood. Planted in the 1920s, these street trees are a lasting remnant of the original development associated with one of



Studio City's earliest residential subdivisions.

HCM #1083, Zeiger House (8941 Wonderland Park Ave.)

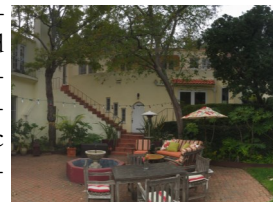


This one-story, Contemporary Custom Ranch style house was built in 1958 in the Bel Air – Beverly Crest neighborhood. It was designed by Robert A. Kennard, whose firm designed over 700 projects in Southern California. Zeiger House exhibits many character-

defining features of a Contemporary Custom Ranch home, including glass walls, fixed and operable, allowing for visual interaction between indoor and outdoor spaces.

HCM #1084, Villa Manola (5900 Manola Way)

Built in 1923, this two-story, single-family residence in the Hollywood Hills exhibits character-defining features of the Moorish Revival style. Features include the use of several Islamic or Moorish arches in transom windows, door openings, and wall niches, an octagonal fountain in the courtyard, and a deeply coved ceiling in the living room. The home was built by master architect Paul R. Williams, whose works include 16 designated Historic-Cultural Monuments.



HELP SHAPE LOS ANGELES' HISTORIC DISTRICTS!

The Office of Historic Resources is seeking volunteers interested in serving as board members for the City's Historic Preservation Overlay Zones (HPOZs).

Each HPOZ in Los Angeles has a five-member Board consisting of local community members and knowledgeable design and real estate professionals. Some boards meet up to two evenings per month, while other HPOZ Boards in smaller districts meet more sporadically.

New volunteers would fill several vacancies that have recently resulted from departures of long-time Boardmembers. We are particularly in need of licensed architects and real estate and construction professionals, but any preservation-minded community

members around the city can be an asset to an HPOZ Board.

If you're interested, please send a resume and cover letter to Michelle Levy, Supervisor of the HPOZ Unit, at michelle.levy@lacity.org.

Serving on an HPOZ Board is a great opportunity to get to know the historic neighborhoods of Los Angeles, as well as for local professionals to make a tangible difference in shaping our local historic communities.

For more information on the City's HPOZ program and the 30 historic districts across Los Angeles, please see <http://preservation.lacity.org/hpoz>.

Office of Historic Resources
Department of City Planning
 200 N. Spring Street, Room 559
 Los Angeles, CA 90012
 (213) 978-1200

Office of Historic Resources Staff:
 Ken Bernstein, Manager
 Janet Hansen, Deputy Manager
 Lambert Giessinger, Preservation Architect
 Edgar Garcia, Preservation Planner
 Nels Youngborg, Planning Assistant

HPOZ Unit: Staff City Hall, Room 601
 Michelle Levy, City Planner
 Renata Dragland, City Planning Associate
 Shannon Ryan, City Planning Associate
 Steven Wechsler, Planning Associate
 Kimberly Henry, Planning Assistant
 Tim Rosenstein, Student Professional Worker
 Blair Smith, Student Professional Worker