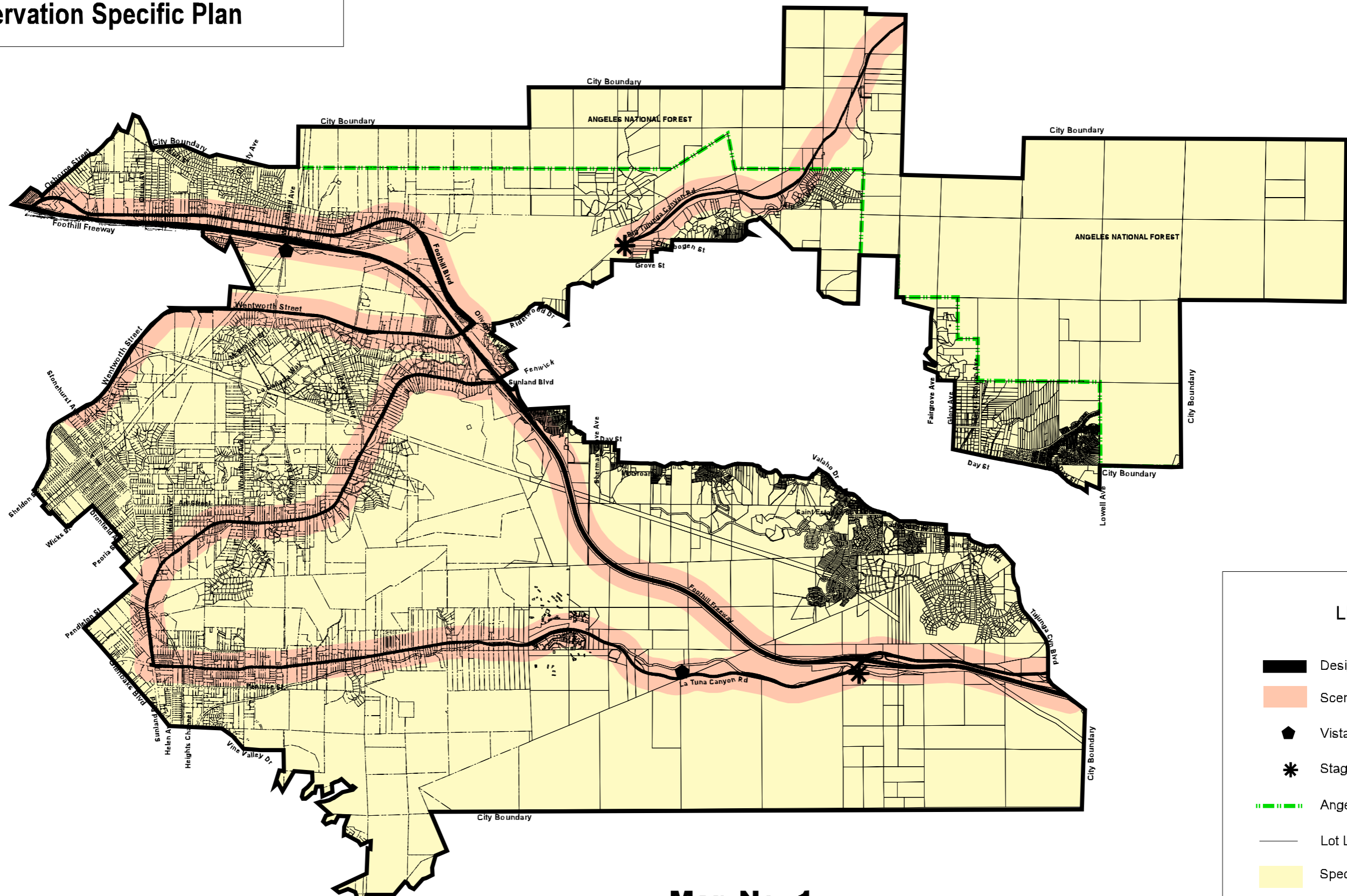









# San Gabriel/Verdugo Mountains Scenic Preservation Specific Plan



**LEGEND**

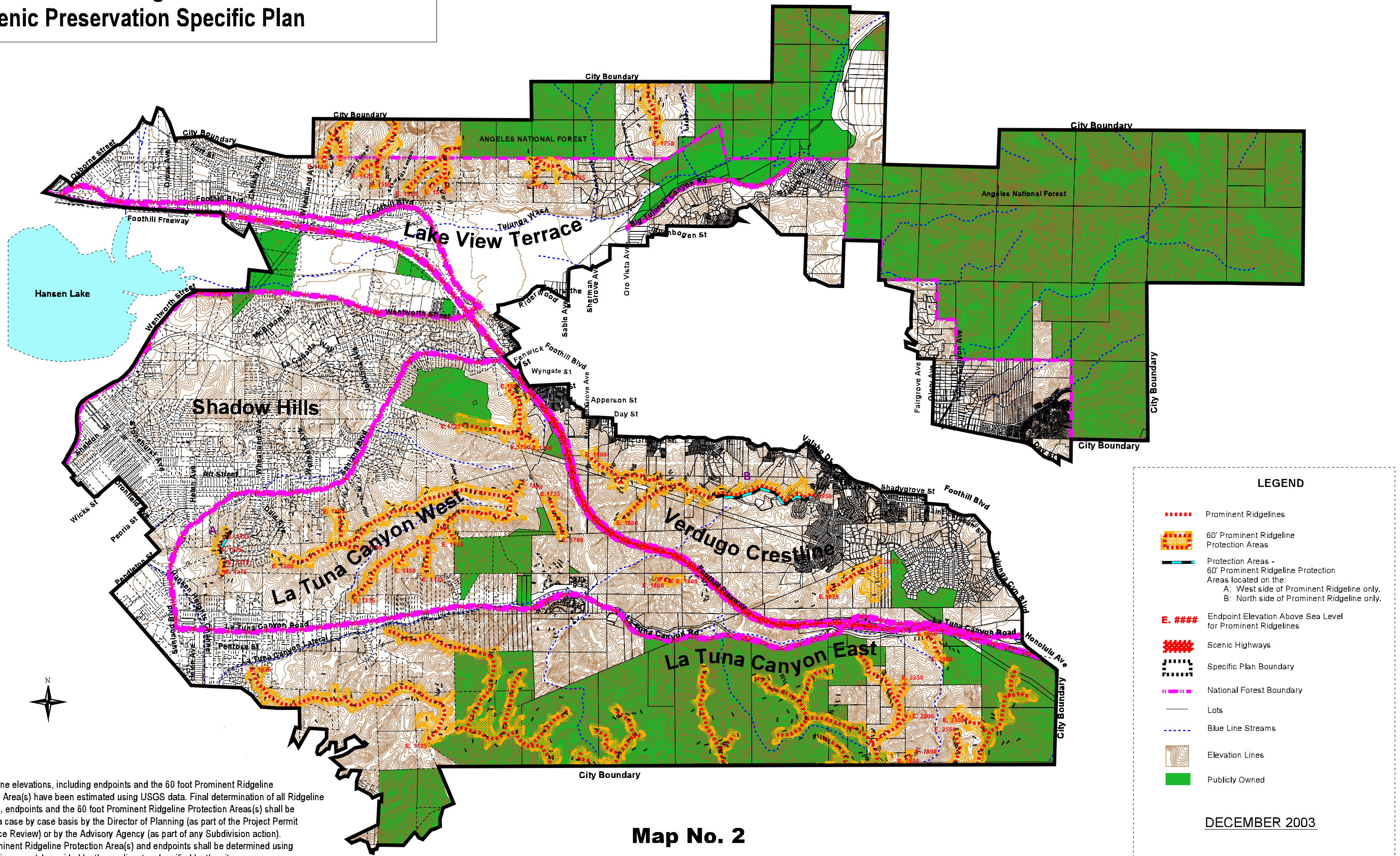
-  Designated Scenic Highways
-  Scenic Highway Corridors
-  Vista Points
-  Staging Area
-  Angeles National Forest
-  Lot Lines
-  Specific Plan

DECEMBER 2003



**Map No. 1**  
**San Gabriel/Verdugo Mountains Scenic Preservation**  
**Specific Plan Boundaries**

# San Gabriel/Verdugo Mountains Scenic Preservation Specific Plan



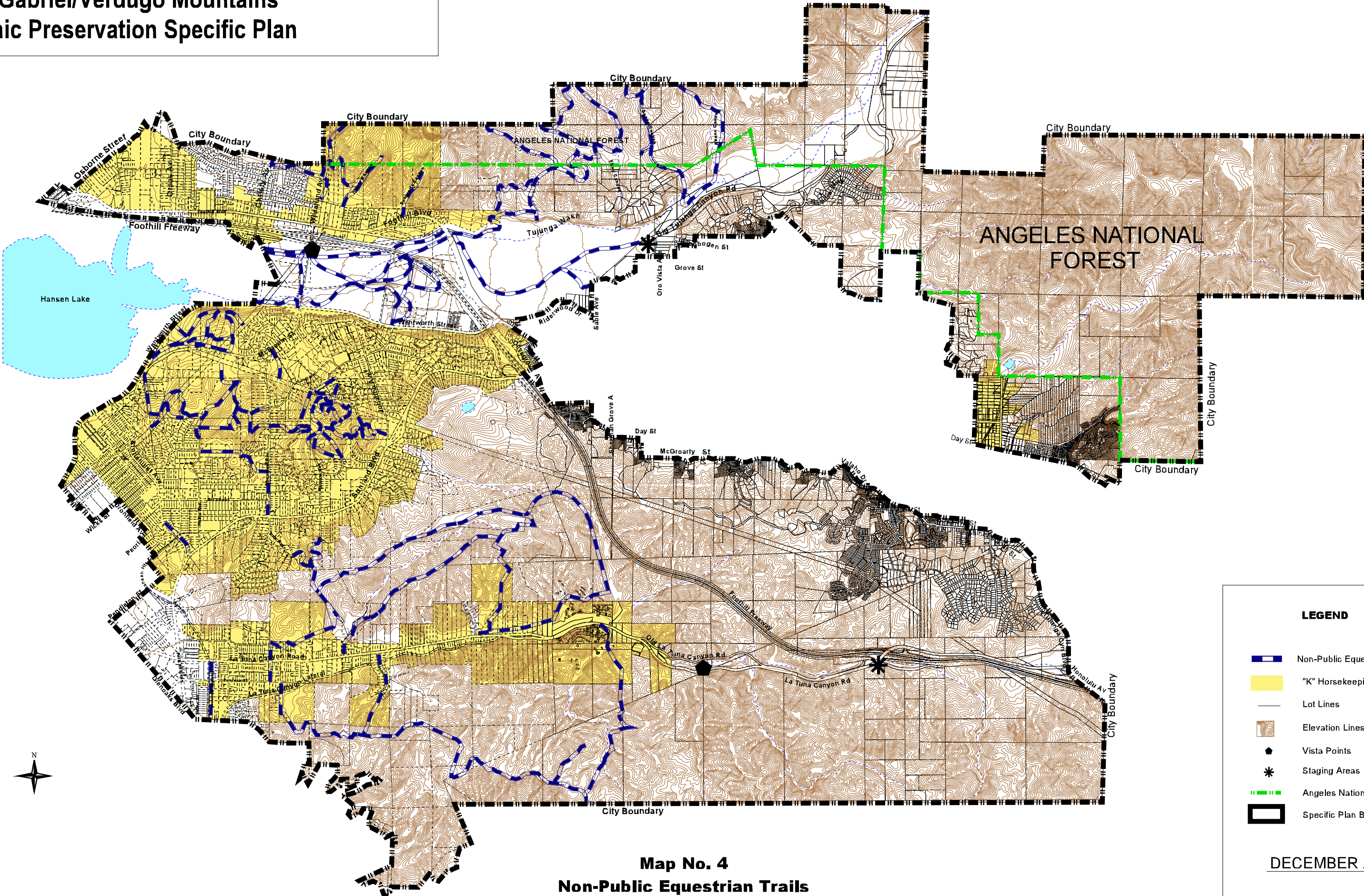
**NOTE:**  
All Ridgeline elevations, including endpoints and the 60 foot Prominent Ridgeline Protection Area(s) have been estimated using USGS data. Final determination of all Ridgeline elevations, endpoints and the 60 foot Prominent Ridgeline Protection Areas(s) shall be made on a case by case basis by the Director of Planning (as part of the Project Permit Compliance Review) or by the Advisory Agency (as part of any Subdivision action). Final Prominent Ridgeline Protection Area(s) and endpoints shall be determined using topographic survey(s) provided by the applicant and verified by the city.

**Map No. 2  
Prominent Ridgelines**

DECEMBER 2003











# San Gabriel/Verdugo Mountains Scenic Preservation Specific Plan



**Map No. 4  
Non-Public Equestrian Trails**

**LEGEND**

-  Non-Public Equestrian Trails
-  "K" Horsekeeping District
-  Lot Lines
-  Elevation Lines
-  Vista Points
-  Staging Areas
-  Angeles National Forest
-  Specific Plan Boundary

**DECEMBER 2003**