

# Planning a Dynamic Future for Los Angeles

Image Source: Cory Gruenfeld



The Downtown Community Plan envisions a sustainable, equitable, and inclusive future for Downtown.

This Plan seeks to accommodate anticipated growth through 2040 while creating a **livable and healthy community** for workers, residents, and visitors. The goals and policies described in this Plan focus on continuing Downtown’s remarkable renaissance and promoting it as a **center of innovation** in the public and private realms. This Plan also seeks to address many of the challenges facing Downtown and the larger region, such as climate change, housing demand and affordability, and a shifting economy, through strategies that guide **thoughtful growth**. These strategies promote the physical development of Downtown; **improve access to jobs, open space, services, and cultural resources; and provide housing for all income levels.**

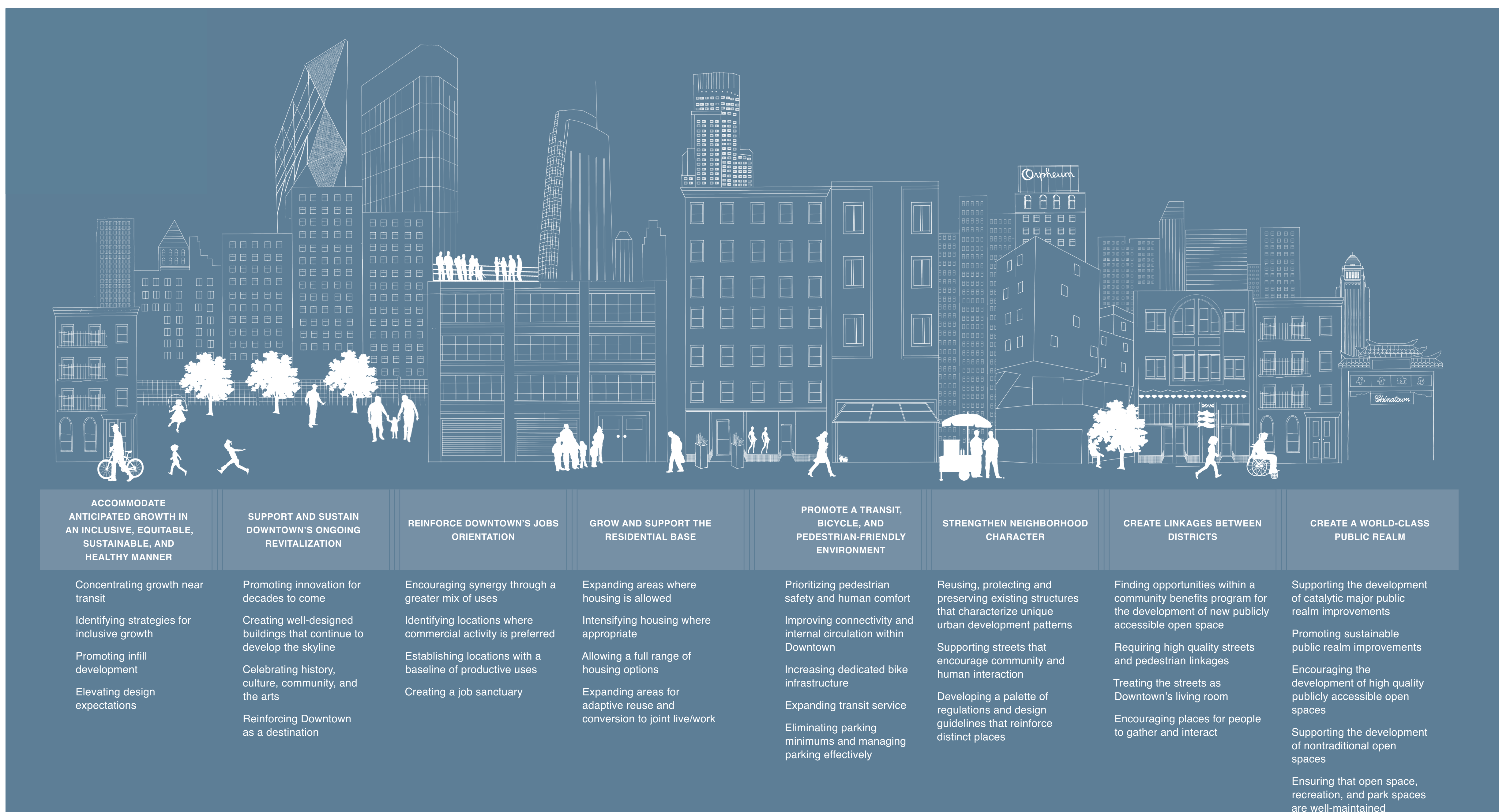
This map provides a comprehensive overview of Downtown Los Angeles, highlighting its diverse urban landscape. Key locations include:

- Chinatown:** Home to the Chinese Temple, Chinese Town Branch Library, and Union Station.
- Little Tokyo:** Features the Japanese Village Plaza and the Nippon Buena Vista Hotel.
- Financial District:** Includes the US Bank Tower, Wells Fargo Center, and the Los Angeles Convention Center.
- Cultural Landmarks:** Such as the Music Center, Grand Park, and the Los Angeles Music Center.
- Parks and Recreation:** Including Grand Park, Pershing Square, and the Los Angeles Music Center.

The map also shows the surrounding city grid, major highways, and the San Gabriel River. A scale bar at the bottom right indicates distances up to 0.8 miles.

# BLUEPRINT FOR GUIDING GROWTH

Icon Source: The Noun Project  
Data Source: Southern California Association of Governments (SCAG)





# DTLA 2040

## Planning a Dynamic Future for Downtown Los Angeles

### WHAT ARE WE DOING?

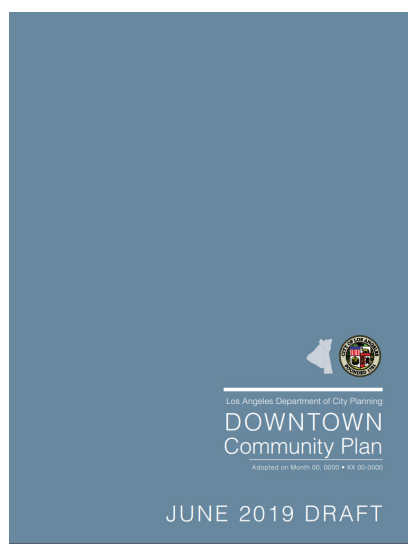
Los Angeles City Planning is collecting public input to inform the update of the Downtown Community Plan, which includes the Central City and Central City North Plan areas. Together, this geography comprises Downtown Los Angeles. The effort of updating the Downtown Plan is known as “DTLA 2040.”

The Downtown Community Plan will set a new direction for the future of Downtown. Community Plans guide the physical development of neighborhoods, establishing goals and policies for land use, in addition to a range of planning topics, including streets and open space, urban design, mobility, and arts & culture.

#### Blueprint for Guiding Growth and Development

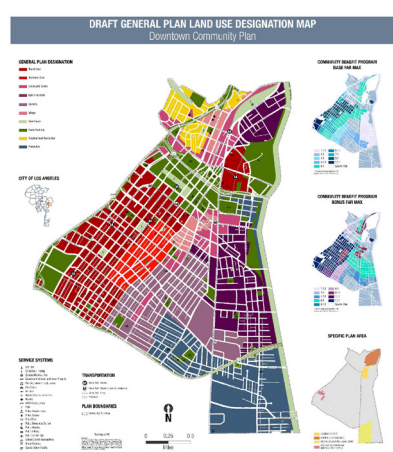
##### PLAN DOCUMENT

- Vision
- Goals
- Policies
- Implementation Programs



##### PLAN MAP

- Sets Range of Uses
- Establishes Range of Intensities



##### ZONING

- Development Regulations
- Use Allowances & Process
- Base & Maximum FARs



DOWNTOWN DESIGN GUIDE  
CITY OF LOS ANGELES | 2019

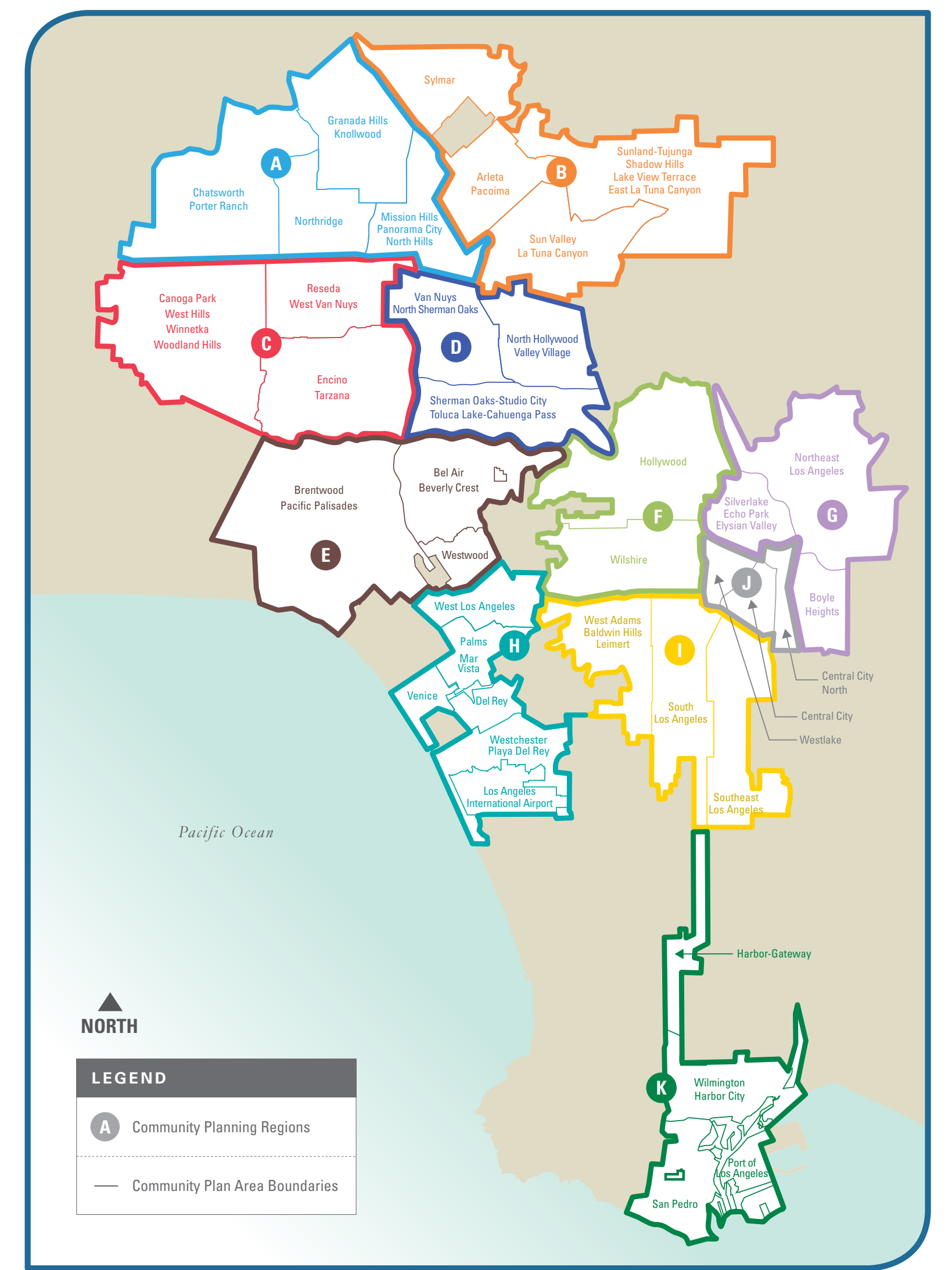
##### IMPLEMENTATION OVERLAY

- Incorporate CDO's
- Downtown Design Guide
- Community Benefits Guidelines

### WHY ARE WE DOING IT?

Los Angeles City Planning is updating the Downtown Community Plan to ensure that this policy document effectively guides growth and development in Downtown's neighborhoods. There are 35 Community Plan areas within Los Angeles, which are to be updated periodically, and provide neighborhood-level policies and implementation strategies necessary to achieve the City's General Plan objectives and the community's vision. The Downtown Plan update is part of an ongoing program to update all 35 Community Plans.

#### MAP OF COMMUNITY PLANS CITYWIDE



### HOW WILL IT AFFECT ME?

The Plan will be intended for use by all members of the community, including residents, Neighborhood Councils, business owners, property owners, developers, and public officials. It is important to note that the Plan's policies, guidelines, and implementation programs are not created in isolation, but rather, developed collectively to address community issues in a comprehensive manner.

#### FOR RESIDENTS & NEIGHBORHOOD COUNCILS:

The Community Plan identifies the type and scale of land uses permitted, describes changes that may affect neighborhoods, and explains the policies, design guidelines, and implementation programs that guide decisions about future development.

#### FOR PUBLIC OFFICIALS:

The Community Plan is a part of the citywide General Plan, which is the basis for land use decisions by the City Planning Commissions, other boards and commissions, and the City Council.

#### FOR BUSINESSES:

The Community Plan identifies land use measures that support businesses and encourage future success. The Plan includes policies to support and enhance commercial and industrial development.

#### FOR PUBLIC AGENCIES:

The Community Plan is intended to help agencies contemplate future actions in the City, such as transportation infrastructure improvements, parks, and schools. The policies located throughout the Plan are interrelated and should be examined comprehensively when making planning decisions.

#### FOR DEVELOPERS & PROPERTY OWNERS:

The Community Plan introduces the community and provides background information. Developers should review all maps, policies, design guidelines, and implementation programs throughout the document to better understand what type of development can occur, and where.

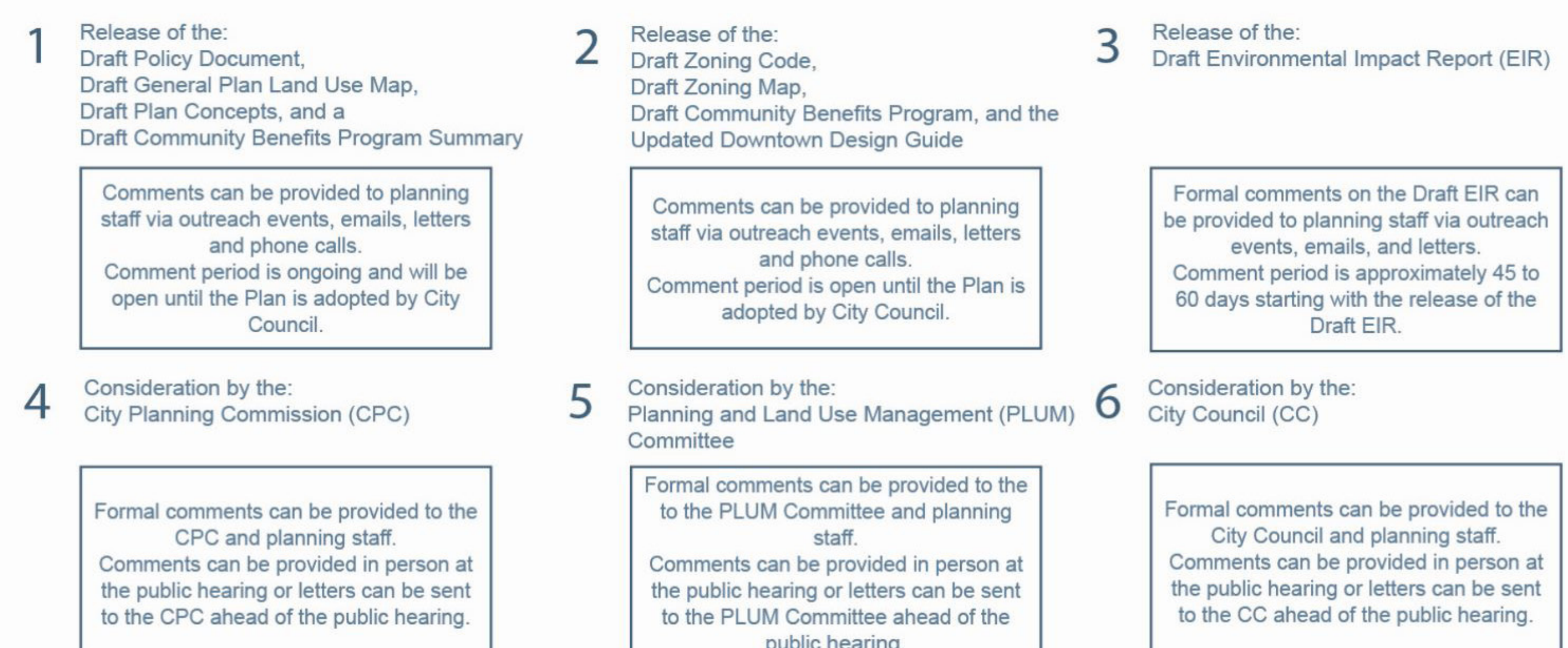
### HOW DO WE GET THERE?

#### PLAN UPDATE PROCESS



The Plan Update process for DTLA 2040 began in 2014, and the Plan is expected to begin the adoption process in 2020, following a period of State-required Environmental analysis and review.

#### PUBLIC PARTICIPATION PROCESS



Note: This timeline represents a general sequence of the Downtown Community Plan update and adoption process. Stayed tuned for email notifications and announcements on the Downtown Community Plan website ([www.dtl2040.org](http://www.dtl2040.org)) for specific release dates, outreach events and dates of scheduled public hearings. If you wish to receive email notifications regarding these announcements, please sign up at <https://www.dtl2040.org/contact-us.html>