

Map Contents
Open Space Working Group #3

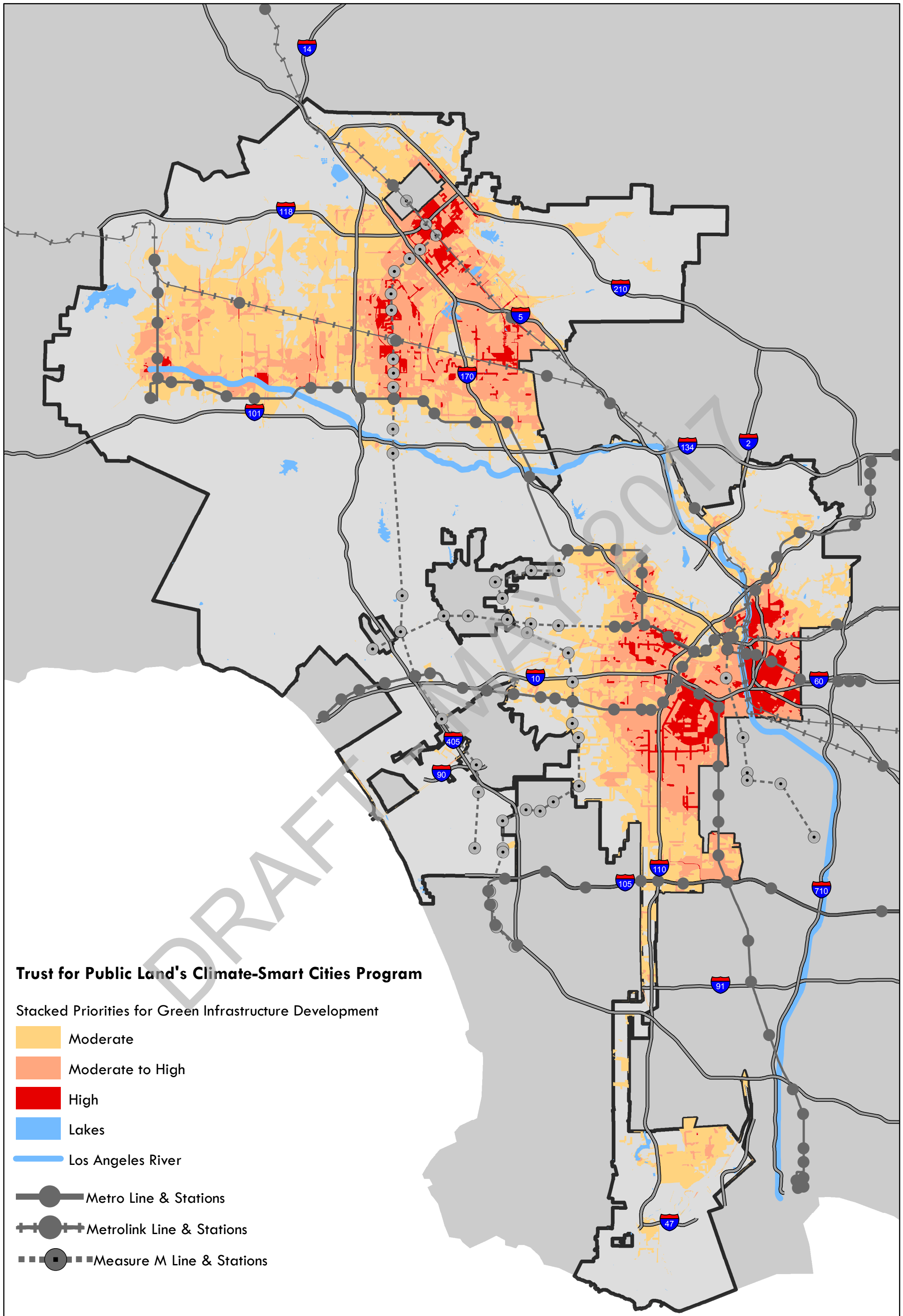
1. **LA Countywide Comprehensive Parks & Recreation Needs Assessment: Overall Park Need**
 - The Needs Assessment analyzes the metrics of park condition, land, amenities, access, and pressure in order to determine the overall level of park need for each Study Area.

2. **Trust for Public Land's 2016 ParkScore®: Areas of Park Need**
 - The Trust for Public Land's ParkScore® Index uses advanced GIS to identify how well cities are meeting park needs and guides the efforts for local park improvements. A maximum ParkScore® of 100 identifies how neighborhoods and demographics are served by parks and the number of people able to reach a park within walking distance. This map supplements TPL's ParkScore® by assessing Park Need on a community level via population density, income, youth population, among other demographic and geographic factors.

3. **Trust for Public Land's Climate-Smart Cities Program: Stacked Priorities for Green Infrastructure**
 - The Trust for Public Land's Climate-Smart Cities Program offers spatial data and decision support tools in order to help cities achieve the goals of a climate planning strategy by outlining priority sites for green infrastructure development. The program identifies priority areas to cool, protect from sea level rise and storm inundation, absorb water, connect communities, and serve socially vulnerable populations.

4. **Public Assets / Facilities**
 - Map indicating public facilities that may be considered an asset to open space including: Transit Sites, Schools, Libraries, Child Care Centers (RAP), Special Event Venues (RAP), Senior Citizen Centers (RAP).

5. **LA Recreation and Parks RAP Recreational Facilities**
 - Map indicating the location of critical Los Angeles Recreation and Parks' recreational facilities including: Parks, Universally Accessible Playgrounds, Skate Parks, Recreation Centers, Horticulture Centers, Pools (combined), Swimming Pools.

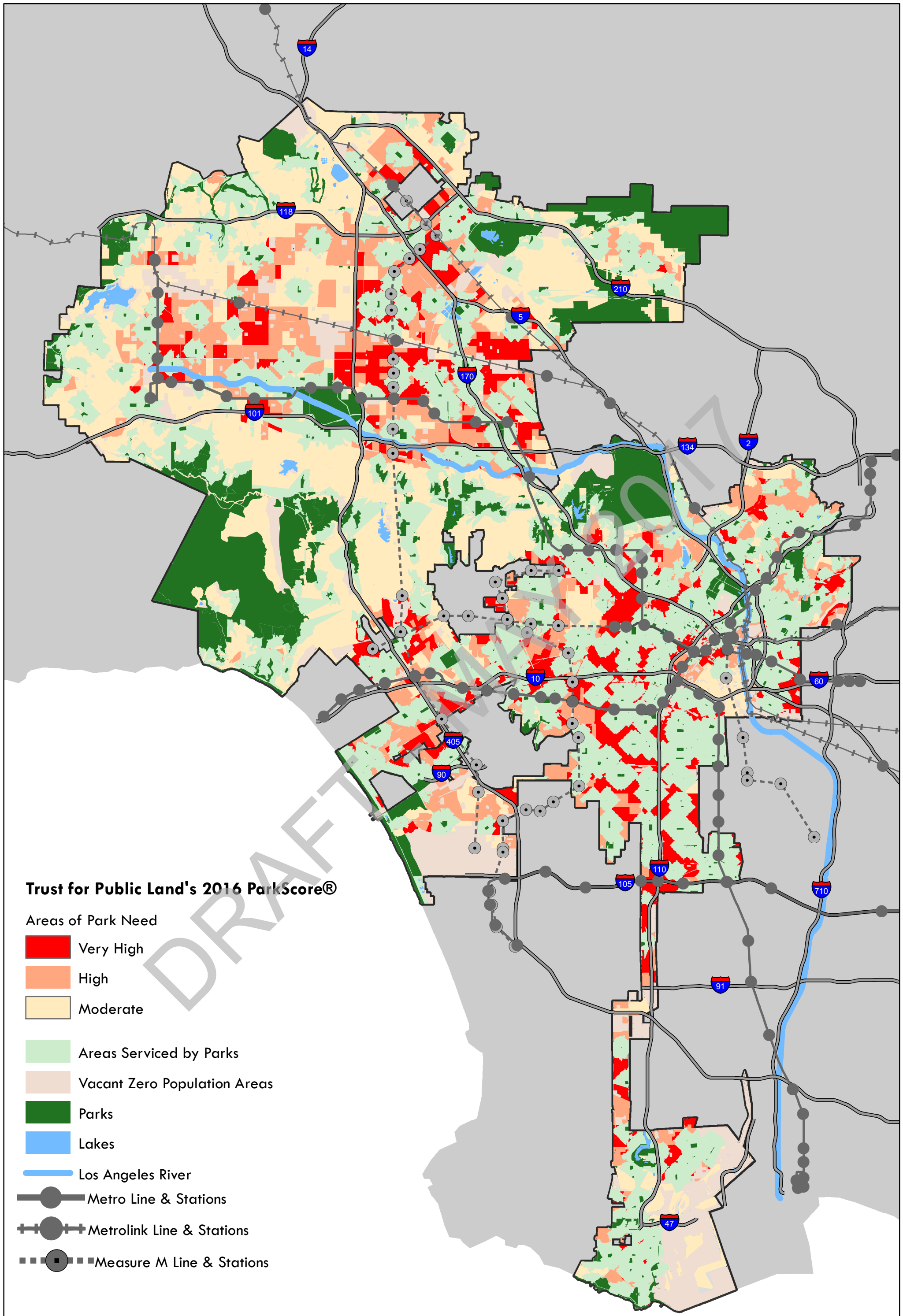


Trust for Public Land's Climate-Smart Cities Program

Stacked Priorities for Green Infrastructure Development

- Moderate
- Moderate to High
- High
- Lakes
- Los Angeles River
- Metro Line & Stations
- Metrolink Line & Stations
- Measure M Line & Stations

The Trust for Public Land's Climate-Smart Cities Program offers spatial data and decision support tools in order to help cities achieve the goals of a climate planning strategy by outlining priority sites for green infrastructure development. The Program uses the categories of Connecting, Cooling, Absorbing, and Protecting to identify climate strategy objectives. (<https://www.tpl.org>)

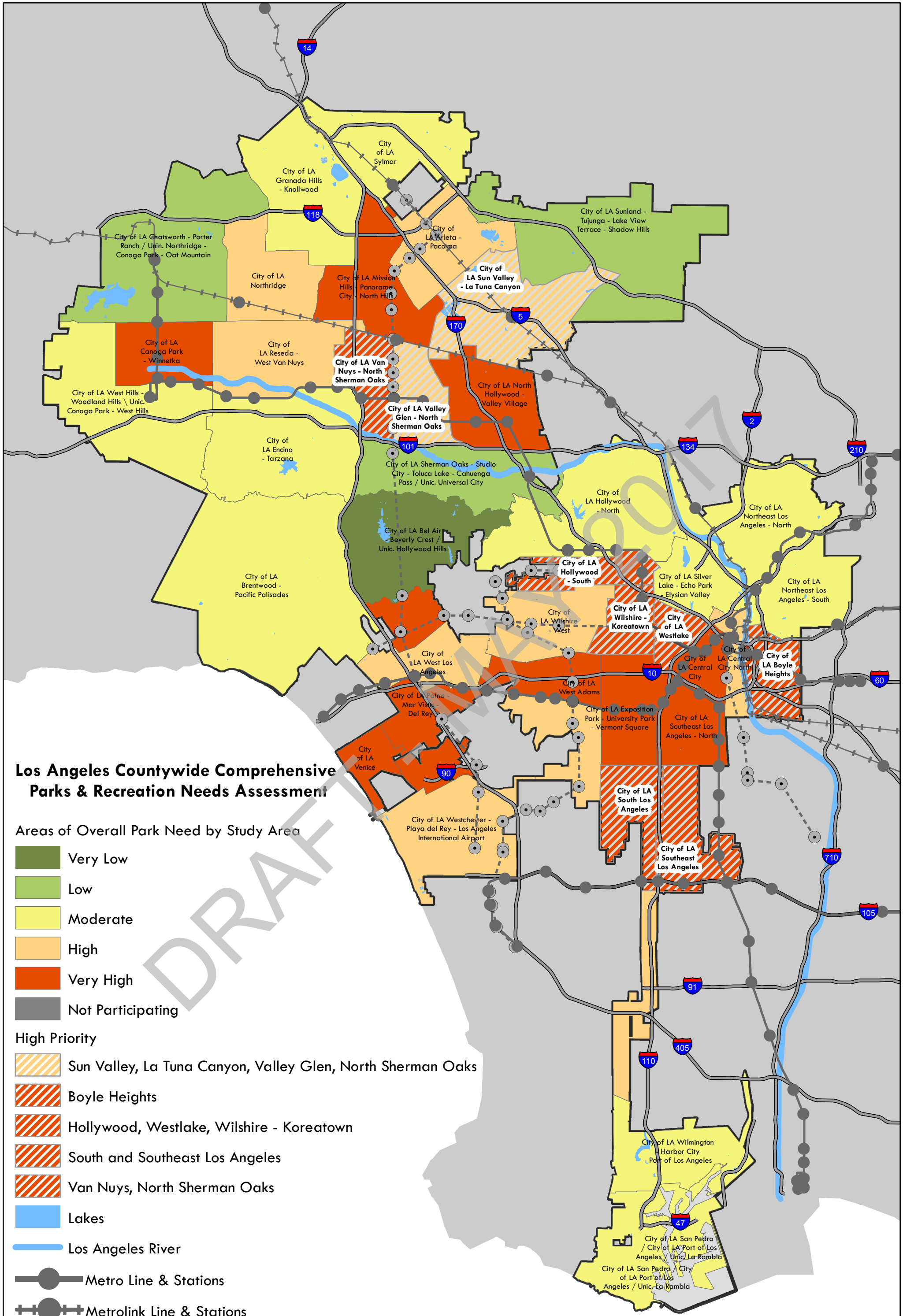


Trust for Public Land's 2016 ParkScore®

Areas of Park Need

- Very High
- High
- Moderate
- Areas Serviced by Parks
- Vacant Zero Population Areas
- Parks
- Lakes
- Los Angeles River
- Metro Line & Stations
- Metrolink Line & Stations
- Measure M Line & Stations

The Trust for Public Land's ParkScore® Index uses advanced GIS to identify how well cities are meeting park needs and guides the efforts for local park improvements. A maximum ParkScore® of 100 identifies how neighborhoods and demographics are served by parks and the number of people able to reach a park within walking distance. This map supplements TPL's ParkScore® by assessing Park Need on a community level via population density, income, youth population, among other demographic and geographic factors. (<http://parkscore.tpl.org/>)



Los Angeles Countywide Comprehensive Parks & Recreation Needs Assessment

Areas of Overall Park Need by Study Area

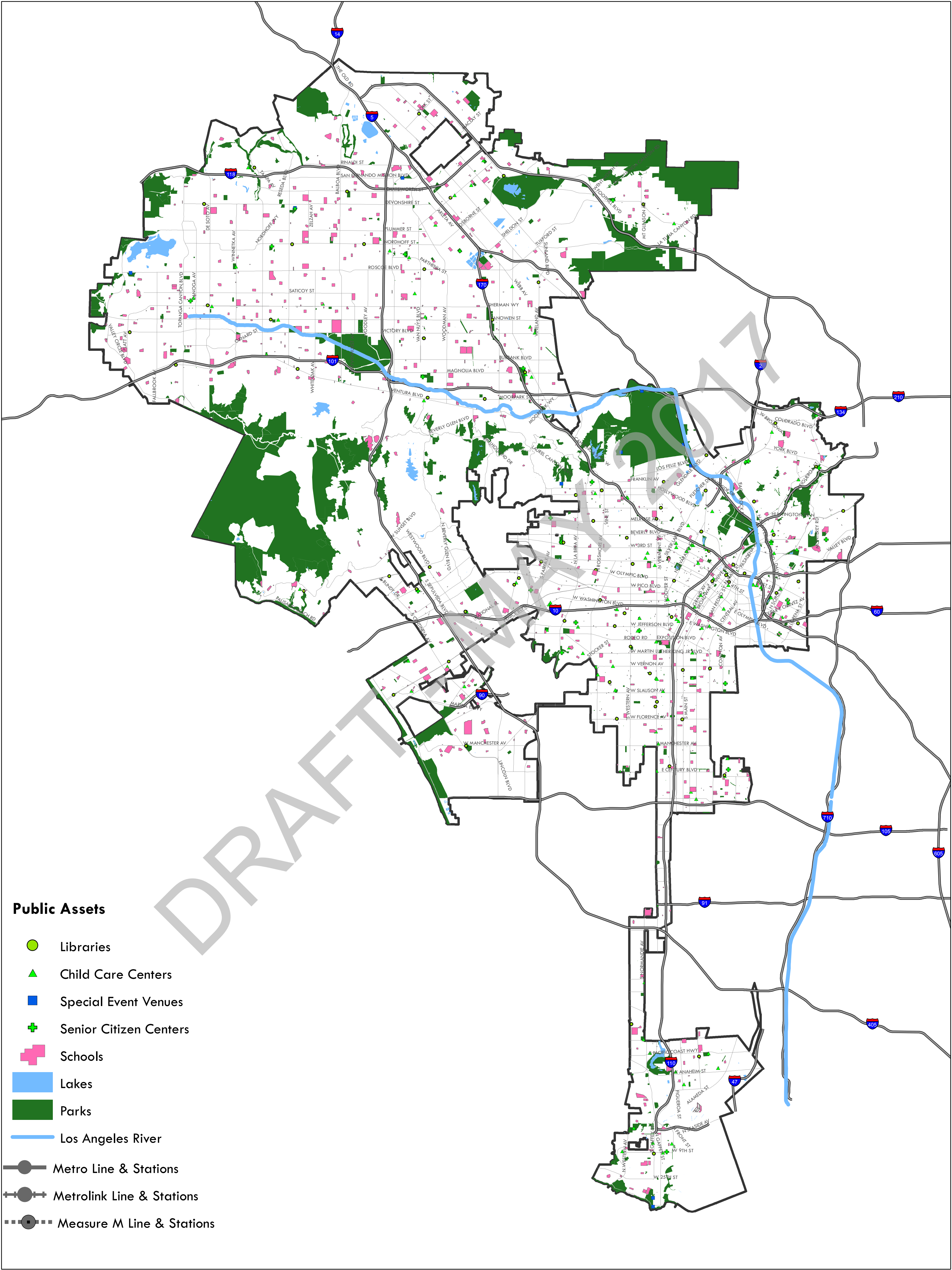
- Very Low
- Low
- Moderate
- High
- Very High
- Not Participating

High Priority

- Sun Valley, La Tuna Canyon, Valley Glen, North Sherman Oaks
- Boyle Heights
- Hollywood, Westlake, Wilshire - Koreatown
- South and Southeast Los Angeles
- Van Nuys, North Sherman Oaks

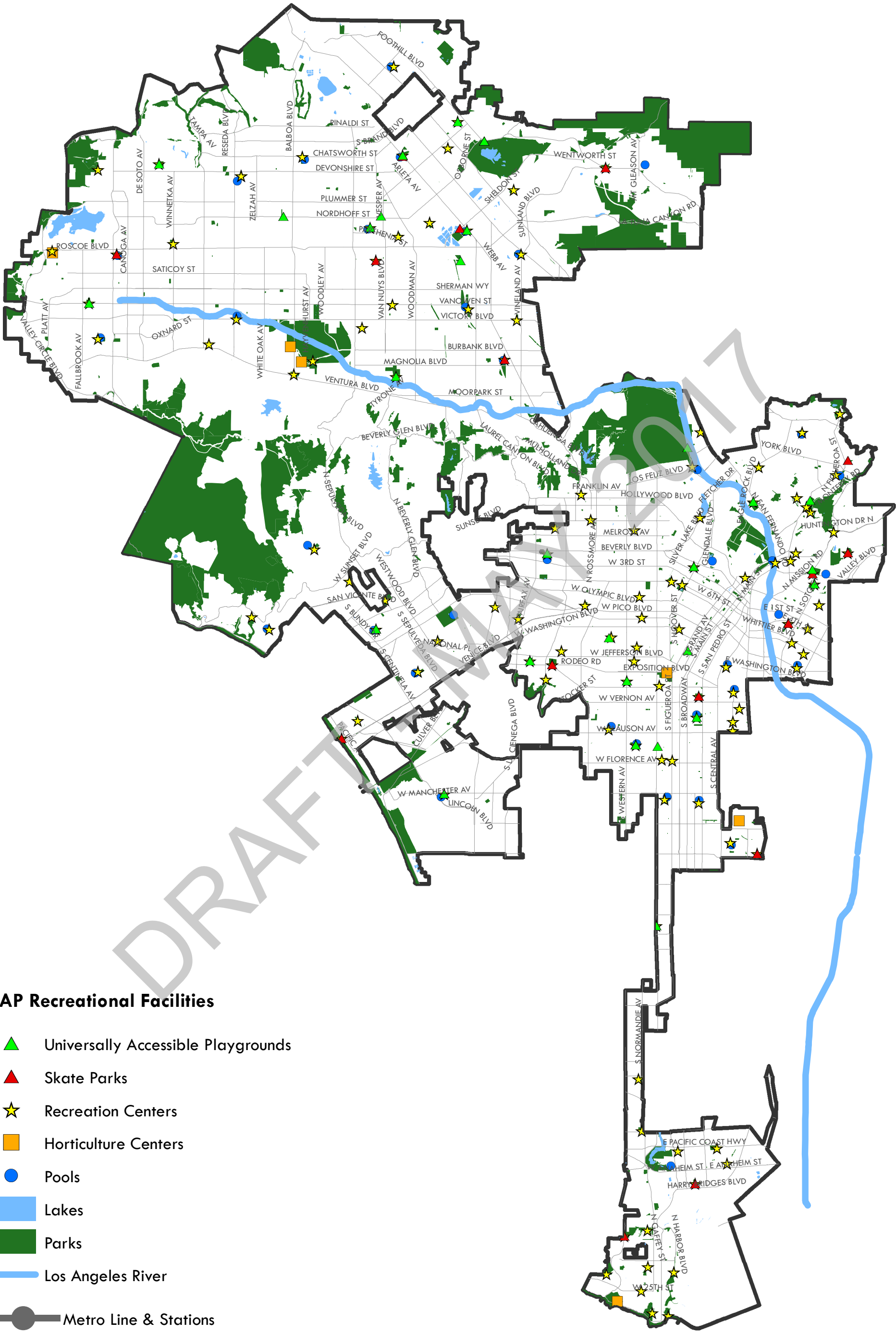
- Lakes
- Los Angeles River
- Metro Line & Stations
- Metrolink Line & Stations
- Measure M Line & Stations

The Needs Assessment analyzes the metrics of park condition, land, amenities, access and pressure in order to determine the overall level of park need for each Study Area.
[\(http://lacountyparkneeds.org/\)](http://lacountyparkneeds.org/)



Public Assets

- Libraries
- ▲ Child Care Centers
- Special Event Venues
- + Senior Citizen Centers
- + Schools
- Lakes
- Parks
- Los Angeles River
- Metro Line & Stations
- +— Metrolink Line & Stations
- Measure M Line & Stations



RAP Recreational Facilities

- ▲ Universally Accessible Playgrounds
- ▲ Skate Parks
- ★ Recreation Centers
- Horticulture Centers
- Pools
- Lakes
- Parks
- Los Angeles River
- Metro Line & Stations
- Metrolink Line & Stations
- - -●- - - Measure M Line & Stations