

Parking Schedule - Level P1

RESIDENTIAL	
COMPACT	41
STANDARD	56
	97

EXHIBIT "A"
 Page No. 19 of 67
 Case No. DIR-2022-8663-CDO-HCA

LEVEL P1 REFERENCE PLAN SCALE: 3/32" = 1'-0" 1

GENERAL NOTES

- LEVEL P1 THRU 1ST ARE TYPE I-A CONSTRUCTION. ALL BEARING AND NON-BEARING PARTITIONS TO BE CONSTRUCTED WITH NON-COMBUSTIBLE MATERIALS.
- UNIT EXTERIOR WALLS MAY VARY BY FLOOR. COORDINATE WITH BLDG. PLANS SHEETS A-2.03 TO A-2.07B, EXTERIOR ELEVATIONS SHEETS, A-4.01 THRU A-4.05, AND BUILDING SECTIONS SHEETS, A-3.01 THRU A-3.05.
- SEE SHEET A-4.01 FOR DOOR SCHEDULE AND SHEET A-8.02 FOR WINDOW SCHEDULE FOR MORE INFORMATION.
- SEE SHEETS, A-6.05 TO A-6.08 FOR WALL AND FLOOR TYPE ASSEMBLIES.
- SEE ENLARGED UNIT PLAN SHEETS A-5.01 THRU A-5.05 FOR MORE INFORMATION.
- ALL ROOFS, COMMON & DWELLING UNIT DECKS TO BE SLOPED TO DRAIN AT 1/4" PER LINEAR FOOT, MINIMUM.
- ALL DIMENSIONS ARE TO FACE OF STUD, FACE OF CONCRETE/CMU OR CENTERLINE OF COLUMNS U.N.O.
- FOR EXTERIOR WATERPROOFING DETAILS SEE SHEETS A-10.01 TO A-10.05
- BUILDING TO BE EQUIPPED WITH NFPA 13 AUTOMATIC SPRINKLER SYSTEM THROUGHOUT.
- ALL EXTERIOR EXIT DOORS TO BE 1-HR FIRE RATED ASSEMBLIES U.N.O.
- PROVIDE PORTABLE FIRE EXTINGUISHER WITH A RATING OF NOT LESS THAN 10BC FOR KITCHEN, ELECTRICAL ROOM, MECHANICAL ROOM, OR PARKING GARAGE.
- SEE FLOOR PLAN SHEETS A-2.01 TO A-2.08B FOR WALL TYPES.
- FLOOR SLOPES AT ACCESSIBLE PARKING NOT TO EXCEED 2% U.N.O.
- LOCATE ALL DOORS 4" OFF OF ADJACENT WALL U.N.O.
- ALL WASHING MACHINES AND CLOTHES DRYERS TO COMPLY WITH SECTION 1135A, CBC.
- LOCKS SHALL BE INSTALLED ON ALL PUBLICLY ACCESSIBLE EXTERIOR FAUCETS AND HOSE BIBS.
- FOR SITES OVER 500 SF OF LANDSCAPE AREA, WASTE PIPING SHALL BE ARRANGED TO PERMIT DISCHARGE FROM THE CLOTHES WASHER, BATHTUB, SHOWERS, AND BATHROOM RESTROOMS WASH BASINS TO BE USED FOR A FUTURE GRAYWATER IRRIGATION SYSTEM.
- WATER USED IN THE BUILDING FOR WATER CLOSETS, URINALS, FLOORS DRAINS, AND PROCESS COLLING AND HEATING SHALL COME FROM CITY-RECYCLE WATER IF AVAILABLE FOR USE WITHIN 300 FEET OF THE PROPERTY LINE.
- WHERE GROUNDWATER IS BEING EXTRACTED AND DISCHARGED, A SYSTEM FOR ONSITE REUSE OF THE GROUNDWATER SHALL BE DEVELOPED AND CONSTRUCTED IF THE GROUNDWATER WILL NOT BE DISCHARGED TO THE SEWER.
- AUTOMATIC LANDSCAPE IRRIGATORS SHALL BE INSTALLED IN SUCH A WAY THAT IT DOES NOT SPRAY ON THE BUILDING.

KEYNOTES

- FACTORY STORAGE BUILDING
- NEW CONSTRUCTION W/OT H SLOPE. SEPARATE ARCHITECT OF RECORD
- STAIR 1
- STAIR 2
- STAIR 3
- STAIR 4
- ELEV. CONTROL B103
- PET WASH B102
- BIKE STORAGE B101
- ADA PATH (SEE A-2.01A - A-2.01B FOR CLEARANCE DIMENSIONS)

LEGEND

- MECHANICAL OUTSIDE AIR VENT
 - MECHANICAL EXHAUST VENT
 - 5' DIAMETER WHEELCHAIR MANEUVERING SPACE
 - ILLUMINATED EXIT SIGN
 - SLOPE TO DRAIN @ 1/4" PLF, MIN.
 - DIRECTION OF TRAVEL
 - CARBON MONOXIDE DETECTOR/ALARM
 - PROVIDE DOOR PANIC HARDWARE ON PUSH SIDE IN DIRECTION OF TRAVEL
 - KEY FOB
- NOTE: ALL EXTERIOR WALLS ARE 1-HR FIRE RATED ASSEMBLIES PER CBC TABLE 601, 602 U.O.N., 45 MIN. RATED DOOR ASSEMBLY PER CBC TABLE 716.5
- NON-RATED WALLS, DOOR ASSEMBLIES
 - CORRIDOR WALLS 1-HR FIRE RATED SEPARATION WALL PER CBC TABLE 1018.1, 20 MIN. RATED DOOR ASSEMBLY PER CBC TABLE 716.5
 - 1-HR FIRE RATED DWELLING UNIT SEPARATION WALL ASSEMBLY PER CBC 420, 709
 - 1-HR FIRE RATED OCCUPANCY SEPARATION WALL ASSEMBLY PER CBC TABLE 508.4, 60 MIN. RATED DOOR ASSEMBLY PER CBC TABLE 716.5
 - 2-HR FIRE RATED ASSEMBLY PER CBC 708, 90 MIN. RATED DOOR ASSEMBLY PER CBC TABLE 716.5
 - 2-HR FIRE RATED EXTERIOR WALL ASSEMBLY WITH FIRE TREATED WOOD PER CBC TABLE 601, RATED DOOR ASSEMBLY PER SCHEDULE
 - 3-HR FIRE BARRIER ASSEMBLY PER CBC SEC. 707
 - 3-HR FIRE RATED FLOOR SEC.711.2.4



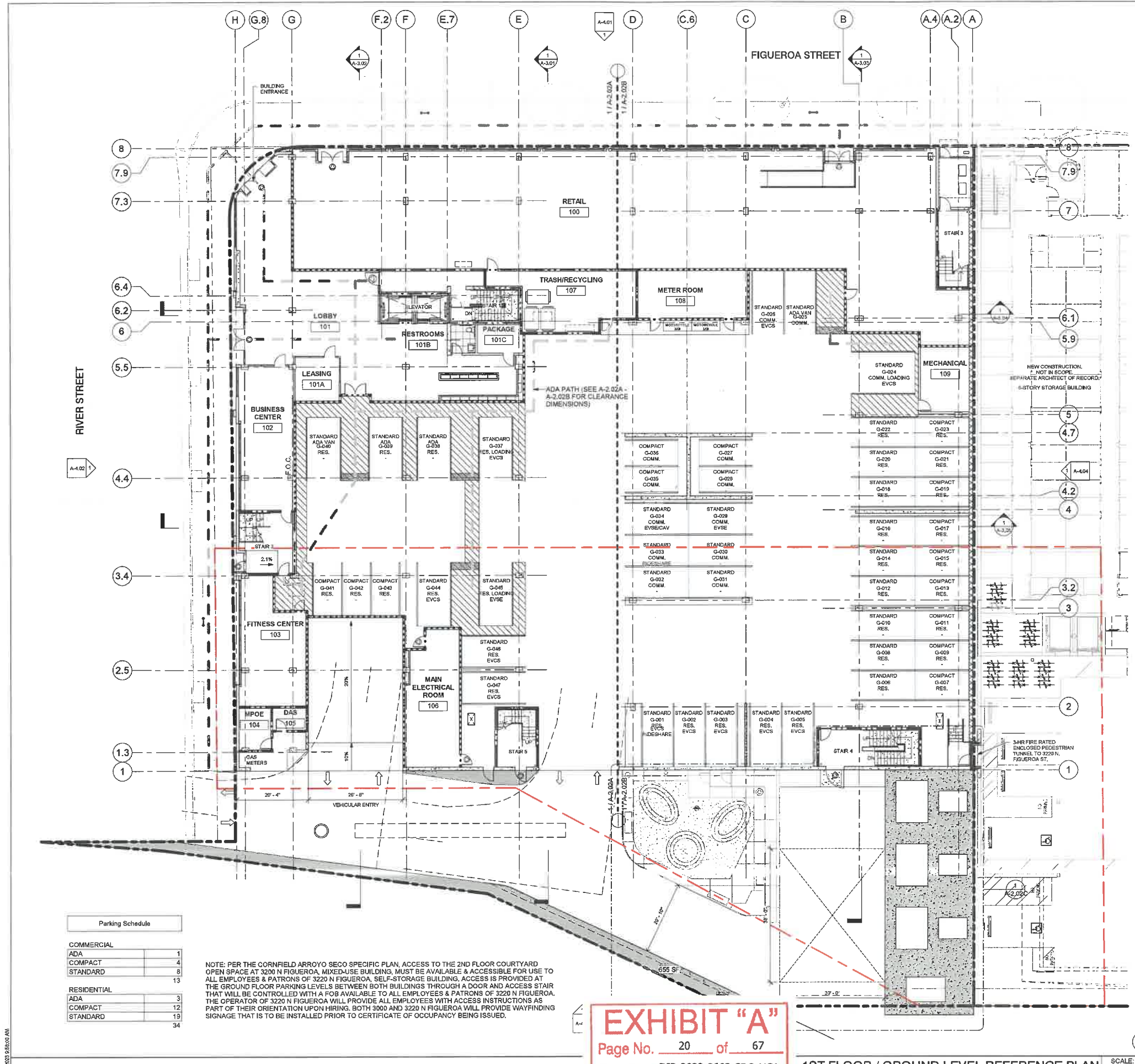
3200 N Fig Mixed-Use
 3200 N. Figueroa St.
 Los Angeles, CA 90065

95% Construction Documents
 January 11, 2022

LEVEL P1 REFERENCE PLAN



Date: 10/02/18
 Scale: As indicated
 By: Author
 Project No: 2106
 Page No: A-2.01 OF



GENERAL NOTES

- LEVEL P1 THRU 1ST ARE TYPE I-A CONSTRUCTION. ALL BEARING AND NON-BEARING PARTITIONS TO BE CONSTRUCTED WITH NON-COMBUSTIBLE MATERIALS.
- UNIT EXTERIOR WALLS MAY VARY BY FLOOR. COORDINATE WITH BLDG. PLANS SHEETS, A-2.03 TO A-2.07B, EXTERIOR ELEVATIONS SHEETS, A-4.01 THRU A-4.05, AND BUILDING SECTIONS SHEETS, A-3.01 THRU A-3.05.
- SEE SHEET A-6.01 FOR DOOR SCHEDULE AND SHEET A-6.02 FOR WINDOW SCHEDULE FOR MORE INFORMATION.
- SEE SHEETS, A-6.05 TO A-6.08 FOR WALL AND FLOOR TYPE ASSEMBLIES.
- SEE ENLARGED UNIT PLAN SHEETS A-5.01 THRU A-5.05 FOR MORE INFORMATION.
- ALL ROOFS, COMMON & DWELLING UNIT DECKS TO BE SLOPED TO DRAIN AT 1/4" PER LINEAR FOOT, MINIMUM.
- ALL DIMENSIONS ARE TO FACE OF STUD, FACE OF CONCRETE/CMU OR CENTERLINE OF COLUMNS U.N.O.
- FOR EXTERIOR WATERPROOFING DETAILS SEE SHEETS A-10.01 TO A-10.05
- BUILDING TO BE EQUIPPED WITH NFPA 13 AUTOMATIC SPRINKLER SYSTEM THROUGHOUT.
- ALL EXTERIOR EXIT DOORS TO BE 1-HR FIRE RATED ASSEMBLIES U.N.O.
- PROVIDE PORTABLE FIRE EXTINGUISHER WITH A RATING OF NOT LESS THAN 10BC FOR KITCHEN, ELECTRICAL ROOM, MECHANICAL ROOM, OR PARKING GARAGE.
- SEE FLOOR PLAN SHEETS A-2.01 TO A-2.08B FOR WALL TYPES.
- FLOOR SLOPES AT ACCESSIBLE PARKING NOT TO EXCEED 2% U.N.O.
- LOCATE ALL DOORS 4" OFF OF ADJACENT WALL U.N.O.
- ALL WASHING MACHINES AND CLOTHES DRYERS TO COMPLY WITH SECTION 1135A, CBC.
- LOCKS SHALL BE INSTALLED ON ALL PUBLICLY ACCESSIBLE EXTERIOR FAUCETS AND HOSE BIBS.
- FOR SITES OVER 500 SF OF LANDSCAPE AREA, WASTE PIPING SHALL BE ARRANGED TO PERMIT DISCHARGE FROM THE CLOTHES WASHER, BATHTUB, SHOWERS, AND BATHROOM RESTROOMS WASH BASINS TO BE USED FOR A FUTURE GRAYWATER IRRIGATION SYSTEM.
- WATER USED IN THE BUILDING FOR WATER CLOSETS, URINALS, FLOORS DRAINS, AND PROCESS COLLING AND HEATING SHALL COME FROM CITY-RECYCLE WATER IF AVAILABLE FOR USE WITHIN 300 FEET OF THE PROPERTY LINE.
- WHERE GROUNDWATER IS BEING EXTRACTED AND DISCHARGED, A SYSTEM FOR ONSITE REUSE OF THE GROUNDWATER SHALL BE DEVELOPED AND CONSTRUCTED IF THE GROUNDWATER WILL NOT BE DISCHARGED TO THE SEWER.
- AUTOMATIC LANDSCAPE IRRIGATORS SHALL BE INSTALLED IN SUCH A WAY THAT IT DOES NOT SPRAY ON THE BUILDING.

KEYNOTES

SHEET NOTES

NOTE: PER THE CORNFIELD ARROYO SECO SPECIFIC PLAN, ACCESS TO THE 2ND FLOOR COURTYARD OPEN SPACE AT 3200 N FIGUEROA, MIXED-USE BUILDING, MUST BE AVAILABLE & ACCESSIBLE FOR USE TO ALL EMPLOYEES & PATRONS OF 3220 N FIGUEROA, SELF-STORAGE BUILDING. ACCESS IS PROVIDED AT THE GROUND FLOOR PARKING LEVELS BETWEEN BOTH BUILDINGS THROUGH A DOOR AND ACCESS STAIR THAT WILL BE CONTROLLED WITH A FOB AVAILABLE TO ALL EMPLOYEES & PATRONS OF 3220 N FIGUEROA. THE OPERATOR OF 3220 N FIGUEROA WILL PROVIDE ALL EMPLOYEES WITH ACCESS INSTRUCTIONS UPON HIRING. BOTH 3200 AND 3220 N FIGUEROA WILL PROVIDE WAYFINDING SIGNAGE THAT IS TO BE INSTALLED PRIOR TO CERTIFICATE OF OCCUPANCY BEING ISSUED.

PER CORNFIELD ARROYO SECO SPECIFIC PLAN - CHAPTER 2.3 URBAN DESIGN

C. GROUND FLOOR

1B. AT LEAST 50% OF THE GROUND FLOOR FRONTAGE OF A BUILDING, OR 35% OF THE GROUND FLOOR FRONTAGE OF A BUILDING INTENDED FOR LIGHT INDUSTRIAL USES, LOCATED ON AN ACTIVE STREET IDENTIFIED ON THE ACTIVE STREETS MAP SHALL BE DESIGNED TO ACCOMMODATE THE FOLLOWING ACTIVE USES: RETAIL, CULTURAL, PROFESSIONAL OFFICE, LIVE/WORK UNITS, RESIDENTIAL UNITS WITH INDIVIDUAL ENTRIES ALONG THE STREET, AND/OR OTHER ACTIVE SPACES SUCH AS RECREATION AND MEETING ROOMS, LOBBIES OR SALES AREAS, OR COMMON ROOMS.

1C. AT LEAST 25% OF THE GROUND FLOOR FRONTAGE OF A BUILDING, OR 20% OF THE GROUND FLOOR FRONTAGE OF A BUILDING INTENDED FOR LIGHT INDUSTRIAL USES, LOCATED ON AN ACTIVE INDUSTRIAL STREET IDENTIFIED ON THE ACTIVE STREETS MAP SHALL BE DESIGNED TO ACCOMMODATE THE FOLLOWING ACTIVE USES: LOBBIES, SALES AREAS, RETAIL, PROFESSIONAL OFFICE, AND/OR OTHER ACTIVE SPACES SUCH AS MEETING ROOMS.

CHAPTER 2.5 PARKING AND ACCESS

3. PARKING LOT DESIGN

3B. THE PARKING CAPACITY OF A SURFACE PARKING LOT SHALL BE LIMITED TO NO MORE THAN 10% OF THE TOTAL PARKING PROVIDED FOR THE SPECIFIC PROJECT UNLESS THE PARKING LOT AREA HAS A TRAFFIC DESIGN OF 5 MPH OR LESS

LEGEND

- MECHANICAL OUTSIDE AIR VENT
- MECHANICAL EXHAUST VENT
- 5" DIAMETER WHEELCHAIR MANEUVERING SPACE
- ILLUMINATED EXIT SIGN
- SLOPE TO DRAIN @ 1/4" PLF, MIN.
- DIRECTION OF TRAVEL
- CARBON MONOXIDE DETECTOR/ALARM
- PROVIDE DOOR PANIC HARDWARE ON PUSH SIDE IN DIRECTION OF TRAVEL
- KEY FOB

NOTE: ALL EXTERIOR WALLS ARE 1-HR FIRE RATED ASSEMBLIES PER CBC TABLE 601, 602 U.N.O., 45 MIN. RATED DOOR ASSEMBLY PER CBC TABLE 716.5

NON-RATED WALLS, DOOR ASSEMBLIES

- CORRIDOR WALLS 1-HR FIRE RATED SEPARATION WALL PER CBC TABLE 1018.1, 20 MIN. RATED DOOR ASSEMBLY PER CBC TABLE 716.5
- 1-HR FIRE RATED DWELLING UNIT SEPARATION WALL ASSEMBLY PER CBC 420, 709
- 1-HR FIRE RATED OCCUPANCY SEPARATION WALL ASSEMBLY PER CBC TABLE 508.4, 60 MIN. RATED DOOR ASSEMBLY PER CBC TABLE 716.5
- 2-HR FIRE RATED ASSEMBLY PER CBC 708, 90 MIN. RATED DOOR ASSEMBLY PER CBC TABLE 716.5
- 2-HR FIRE RATED EXTERIOR WALL ASSEMBLY WITH FIRE TREATED WOOD PER CBC TABLE 601, RATED DOOR ASSEMBLY PER SCHEDULE
- 3-HR FIRE BARRIER ASSEMBLY PER CBC SEC. 707
- 3-HR FIRE RATED FLOOR SEC.711.2.4

Parking Schedule	
COMMERCIAL	
ADA	1
COMPACT	4
STANDARD	8
RESIDENTIAL	
ADA	3
COMPACT	12
STANDARD	19
	34

NOTE: PER THE CORNFIELD ARROYO SECO SPECIFIC PLAN, ACCESS TO THE 2ND FLOOR COURTYARD OPEN SPACE AT 3200 N FIGUEROA, MIXED-USE BUILDING, MUST BE AVAILABLE & ACCESSIBLE FOR USE TO ALL EMPLOYEES & PATRONS OF 3220 N FIGUEROA, SELF-STORAGE BUILDING. ACCESS IS PROVIDED AT THE GROUND FLOOR PARKING LEVELS BETWEEN BOTH BUILDINGS THROUGH A DOOR AND ACCESS STAIR THAT WILL BE CONTROLLED WITH A FOB AVAILABLE TO ALL EMPLOYEES & PATRONS OF 3220 N FIGUEROA. THE OPERATOR OF 3220 N FIGUEROA WILL PROVIDE ALL EMPLOYEES WITH ACCESS INSTRUCTIONS AS PART OF THEIR ORIENTATION UPON HIRING. BOTH 3000 AND 3220 N FIGUEROA WILL PROVIDE WAYFINDING SIGNAGE THAT IS TO BE INSTALLED PRIOR TO CERTIFICATE OF OCCUPANCY BEING ISSUED.

EXHIBIT "A"
 Page No. 20 of 67
 Case No. DIR-2022-8663-CDO-HCA

1ST FLOOR / GROUND LEVEL REFERENCE PLAN SCALE: 3/32" = 1'-0" 1

GENERAL NOTES

- LEVEL P1 THRU 1ST ARE TYPE I-A CONSTRUCTION. ALL BEARING AND NON-BEARING PARTITIONS TO BE CONSTRUCTED WITH NON-COMBUSTIBLE MATERIALS.
- UNIT EXTERIOR WALLS MAY VARY BY FLOOR. COORDINATE WITH BLDG. PLANS SHEETS, A-2.03 TO A-2.07B, EXTERIOR ELEVATIONS SHEETS, A-4.01 THRU A-4.05, AND BUILDING SECTIONS SHEETS, A-3.01 THRU A-3.05.
- SEE SHEET A-6.01 FOR DOOR SCHEDULE AND SHEET A-6.02 FOR WINDOW SCHEDULE FOR MORE INFORMATION.
- SEE SHEETS, A-6.05 TO A-6.08 FOR WALL AND FLOOR TYPE ASSEMBLIES.
- SEE ENLARGED UNIT PLAN SHEETS A-5.01 THRU A-5.05 FOR MORE INFORMATION.
- ALL ROOFS, COMMON & DWELLING UNIT DECKS TO BE SLOPED TO DRAIN AT 1/4" PER LINEAR FOOT, MINIMUM.
- ALL DIMENSIONS ARE TO FACE OF STUD, FACE OF CONCRETE/CMU OR CENTERLINE OF COLUMNS U.N.O.
- FOR EXTERIOR WATERPROOFING DETAILS SEE SHEETS A-10.01 TO A-10.05
- BUILDING TO BE EQUIPPED WITH NFPA 13 AUTOMATIC SPRINKLER SYSTEM THROUGHOUT.
- ALL EXTERIOR EXIT DOORS TO BE 1-HR FIRE RATED ASSEMBLIES U.N.O.
- PROVIDE PORTABLE FIRE EXTINGUISHER WITH A RATING OF NOT LESS THAN 10BC FOR KITCHEN, ELECTRICAL ROOM, MECHANICAL ROOM, OR PARKING GARAGE.
- SEE FLOOR PLAN SHEETS A-2.01 TO A-2.08B FOR WALL TYPES.
- FLOOR SLOPES AT ACCESSIBLE PARKING NOT TO EXCEED 2% U.N.O.
- LOCATE ALL DOORS 4" OFF OF ADJACENT WALL U.N.O.
- ALL WASHING MACHINES AND CLOTHES DRYERS TO COMPLY WITH SECTION 1135A, CBC.
- LOCKS SHALL BE INSTALLED ON ALL PUBLICLY ACCESSIBLE EXTERIOR FAUCETS AND HOSE BIBS.
- FOR SITES OVER 500 SF OF LANDSCAPE AREA, WASTE PIPING SHALL BE ARRANGED TO PERMIT DISCHARGE FROM THE CLOTHES WASHER, BATHTUB, SHOWERS, AND BATHROOM RESTROOMS WASH BASINS TO BE USED FOR A FUTURE GRAYWATER IRRIGATION SYSTEM.
- WATER USED IN THE BUILDING FOR WATER CLOSETS, URINALS, FLOORS DRAINS, AND PROCESS COLLING AND HEATING SHALL COME FROM CITY-RECYCLE WATER IF AVAILABLE FOR USE WITHIN 300 FEET OF THE PROPERTY LINE.
- WHERE GROUNDWATER IS BEING EXTRACTED AND DISCHARGED, A SYSTEM FOR ONSITE REUSE OF THE GROUNDWATER SHALL BE DEVELOPED AND CONSTRUCTED IF THE GROUNDWATER WILL NOT BE DISCHARGED TO THE SEWER.
- AUTOMATIC LANDSCAPE IRRIGATORS SHALL BE INSTALLED IN SUCH A WAY THAT IT DOES NOT SPRAY ON THE BUILDING.

KEYNOTES

SHEET NOTES

NOTE: PER THE CORNFIELD ARROYO SECO SPECIFIC PLAN, ACCESS TO THE 2ND FLOOR COURTYARD OPEN SPACE AT 3200 N FIGUEROA, MIXED-USE BUILDING, MUST BE AVAILABLE & ACCESSIBLE FOR USE TO ALL EMPLOYEES & PATRONS OF 3220 N FIGUEROA, SELF-STORAGE BUILDING. ACCESS IS PROVIDED AT THE GROUND FLOOR PARKING LEVELS BETWEEN BOTH BUILDINGS THROUGH A DOOR AND ACCESS STAIR THAT WILL BE CONTROLLED WITH A FOB AVAILABLE TO ALL EMPLOYEES & PATRONS OF 3220 N FIGUEROA. THE OPERATOR OF 3220 N FIGUEROA WILL PROVIDE ALL EMPLOYEES WITH ACCESS INSTRUCTIONS UPON HIRING. BOTH 3200 AND 3220 N FIGUEROA WILL PROVIDE WAYFINDING SIGNAGE THAT IS TO BE INSTALLED PRIOR TO CERTIFICATE OF OCCUPANCY BEING ISSUED.

PER CORNFIELD ARROYO SECO SPECIFIC PLAN - CHAPTER 2.3 URBAN DESIGN

C. GROUND FLOOR

1B. AT LEAST 50% OF THE GROUND FLOOR FRONTAGE OF A BUILDING, OR 35% OF THE GROUND FLOOR FRONTAGE OF A BUILDING INTENDED FOR LIGHT INDUSTRIAL USES, LOCATED ON AN ACTIVE STREET IDENTIFIED ON THE ACTIVE STREETS MAP SHALL BE DESIGNED TO ACCOMMODATE THE FOLLOWING ACTIVE USES: RETAIL, CULTURAL, PROFESSIONAL OFFICE, LIVE/WORK UNITS, RESIDENTIAL UNITS WITH INDIVIDUAL ENTRIES ALONG THE STREET, AND/OR OTHER ACTIVE SPACES SUCH AS RECREATION AND MEETING ROOMS, LOBBIES OR SALES AREAS, OR COMMON ROOMS.

1C. AT LEAST 25% OF THE GROUND FLOOR FRONTAGE OF A BUILDING, OR 20% OF THE GROUND FLOOR FRONTAGE OF A BUILDING INTENDED FOR LIGHT INDUSTRIAL USES, LOCATED ON AN ACTIVE INDUSTRIAL STREET IDENTIFIED ON THE ACTIVE STREETS MAP SHALL BE DESIGNED TO ACCOMMODATE THE FOLLOWING ACTIVE USES: LOBBIES, SALES AREAS, RETAIL, PROFESSIONAL OFFICE, AND/OR OTHER ACTIVE SPACES SUCH AS MEETING ROOMS.

CHAPTER 2.5 PARKING AND ACCESS

3. PARKING LOT DESIGN

3B. THE PARKING CAPACITY OF A SURFACE PARKING LOT SHALL BE LIMITED TO NO MORE THAN 10% OF THE TOTAL PARKING PROVIDED FOR THE SPECIFIC PROJECT UNLESS THE PARKING LOT AREA HAS A TRAFFIC DESIGN OF 5 MPH OR LESS

LEGEND

- MECHANICAL OUTSIDE AIR VENT
- MECHANICAL EXHAUST VENT
- 5" DIAMETER WHEELCHAIR MANEUVERING SPACE
- ILLUMINATED EXIT SIGN
- SLOPE TO DRAIN @ 1/4" PLF, MIN.
- DIRECTION OF TRAVEL
- CARBON MONOXIDE DETECTOR/ALARM
- PROVIDE DOOR PANIC HARDWARE ON PUSH SIDE IN DIRECTION OF TRAVEL
- KEY FOB

NOTE: ALL EXTERIOR WALLS ARE 1-HR FIRE RATED ASSEMBLIES PER CBC TABLE 601, 602 U.N.O., 45 MIN. RATED DOOR ASSEMBLY PER CBC TABLE 716.5

NON-RATED WALLS, DOOR ASSEMBLIES

- CORRIDOR WALLS 1-HR FIRE RATED SEPARATION WALL PER CBC TABLE 1018.1, 20 MIN. RATED DOOR ASSEMBLY PER CBC TABLE 716.5
- 1-HR FIRE RATED DWELLING UNIT SEPARATION WALL ASSEMBLY PER CBC 420, 709
- 1-HR FIRE RATED OCCUPANCY SEPARATION WALL ASSEMBLY PER CBC TABLE 508.4, 60 MIN. RATED DOOR ASSEMBLY PER CBC TABLE 716.5
- 2-HR FIRE RATED ASSEMBLY PER CBC 708, 90 MIN. RATED DOOR ASSEMBLY PER CBC TABLE 716.5
- 2-HR FIRE RATED EXTERIOR WALL ASSEMBLY WITH FIRE TREATED WOOD PER CBC TABLE 601, RATED DOOR ASSEMBLY PER SCHEDULE
- 3-HR FIRE BARRIER ASSEMBLY PER CBC SEC. 707
- 3-HR FIRE RATED FLOOR SEC.711.2.4

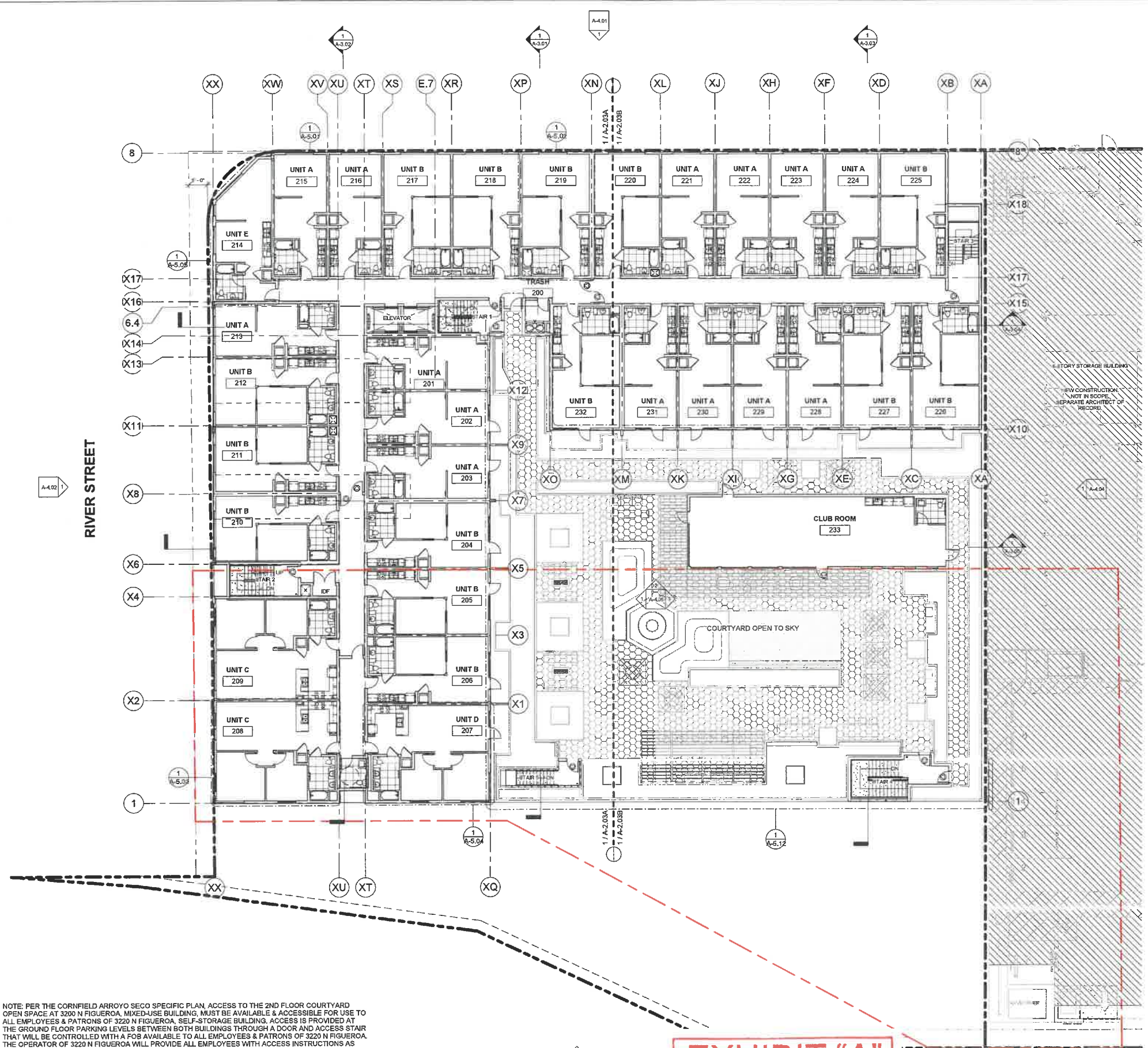
3200 N Fig Mixed-Use
 3200 N. Figueroa St.
 Los Angeles, CA 90065

100% Construction Documents
 January 11, 2022

1ST FLOOR / GROUND LEVEL REFERENCE PLAN

Date: 10/02/18
 Scale: As Indicated
 By: MP
 Project No: 2106
 Page No: A-2.02





- ### GENERAL NOTES
- LEVEL P1 THRU 1ST ARE TYPE I-A CONSTRUCTION. ALL BEARING AND NON-BEARING PARTITIONS TO BE CONSTRUCTED WITH NON-COMBUSTIBLE MATERIALS.
 - UNIT EXTERIOR WALLS MAY VARY BY FLOOR. COORDINATE WITH BLDG. PLANS SHEETS, A-2.03 TO A-2.07B, EXTERIOR ELEVATIONS SHEETS, A-4.01 THRU A-4.05, AND BUILDING SECTIONS SHEETS, A-3.01 THRU A-3.05.
 - SEE SHEET A-6.01 FOR DOOR SCHEDULE AND SHEET A-6.02 FOR WINDOW SCHEDULE FOR MORE INFORMATION.
 - SEE SHEETS, A-6.05 TO A-6.08 FOR WALL AND FLOOR TYPE ASSEMBLIES.
 - SEE ENLARGED UNIT PLAN SHEETS A-5.01 THRU A-5.05 FOR MORE INFORMATION.
 - ALL ROOFS, COMMON & DWELLING UNIT DECKS TO BE SLOPED TO DRAIN AT 1/4" PER LINEAR FOOT, MINIMUM.
 - ALL DIMENSIONS ARE TO FACE OF STUD, FACE OF CONCRETE/CMU OR CENTERLINE OF COLUMNS U.N.O.
 - FOR EXTERIOR WATERPROOFING DETAILS SEE SHEETS A-10.01 TO A-10.05
 - BUILDING TO BE EQUIPPED WITH NFPA 13 AUTOMATIC SPRINKLER SYSTEM THROUGHOUT.
 - ALL EXTERIOR EXIT DOORS TO BE 1-HR FIRE RATED ASSEMBLIES U.N.O.
 - PROVIDE PORTABLE FIRE EXTINGUISHER WITH A RATING OF NOT LESS THAN 10BC FOR KITCHEN, ELECTRICAL ROOM, MECHANICAL ROOM, OR PARKING GARAGE.
 - SEE FLOOR PLAN SHEETS A-2.01 TO A-2.08B FOR WALL TYPES.
 - FLOOR SLOPES AT ACCESSIBLE PARKING NOT TO EXCEED 2% U.N.O.
 - LOCATE ALL DOORS 4" OFF OF ADJACENT WALL U.N.O.
 - ALL WASHING MACHINES AND CLOTHES DRYERS TO COMPLY WITH SECTION 1135A, CBC.
 - LOCKS SHALL BE INSTALLED ON ALL PUBLICLY ACCESSIBLE EXTERIOR FAUCETS AND HOSE BIBS.
 - FOR SITES OVER 500 SF OF LANDSCAPE AREA, WASTE PIPING SHALL BE ARRANGED TO PERMIT DISCHARGE FROM THE CLOTHES WASHER, BATHTUB, SHOWERS, AND BATHROOM RESTROOMS WASH BASINS TO BE USED FOR A FUTURE GRAYWATER IRRIGATION SYSTEM.
 - WATER USED IN THE BUILDING FOR WATER CLOSETS, URINALS, FLOORS DRAINS, AND PROCESS COILING AND HEATING SHALL COME FROM CITY-RECYCLE WATER IF AVAILABLE FOR USE WITHIN 300 FEET OF THE PROPERTY LINE.
 - WHERE GROUNDWATER IS BEING EXTRACTED AND DISCHARGED, A SYSTEM FOR ONSITE REUSE OF THE GROUNDWATER SHALL BE DEVELOPED AND CONSTRUCTED IF THE GROUNDWATER WILL NOT BE DISCHARGED TO THE SEWER.
 - AUTOMATIC LANDSCAPE IRRIGATORS SHALL BE INSTALLED IN SUCH A WAY THAT IT DOES NOT SPRAY ON THE BUILDING.

- ### KEYNOTES
- PER CORNFIELD ARROYO SECO SPECIFIC PLAN - CHAPTER 2.3 URBAN DESIGN
- ### SHEET NOTES
- 2.3.D - WINDOWS AND GLAZING
- WINDOWS, TO REDUCE INTERIOR HEAT GAIN AND IMPROVE ENERGY PERFORMANCE, THE WINDOW TO WALL RATIO (EXCLUSIVE OF THE GROUND FLOOR) SHALL NOT EXCEED 40% ON THE EAST, WEST, SOUTHWEST, NORTHWEST, SOUTHEAST AND NORTHEAST FACADES, UNLESS AN APPLICANT CAN DEMONSTRATE WITH CALCULATIONS PROVIDED BY A LICENSED MECHANICAL ENGINEER THAT AN ALTERNATIVE FACADE DESIGN WILL PROVIDE THE SAME OR GREATER REDUCTION IN THE BUILDING'S COOLING LOADS. (PG. 2-48)
 - GLAZING, THE PROJECT APPLICANT SHALL PROVIDE AN ELEVATION THAT INDICATES THE WINDOW AND DOOR GLAZING AND THE SHADING DEVICES USED TO REDUCE BIRDS' ACCESS TO GLASS. (PG. 2-49)
 - AT LEAST 50% OF GROUND FLOOR WINDOW AND DOOR GLAZING SHALL BE TRANSPARENT AND HAVE A 0-10% REFLECTIVITY RATING, AND/OR INCLUDE SHADING DEVICES, SCREENS OR OTHER BARRIERS TO REDUCE BIRDS' ACCESS TO GLASS. IN ADDITION, OR ALTERNATIVELY, THE GLASS MAY BE INSTALLED BETWEEN 20-40 DEGREES FROM VERTICAL. (SEE A-6.03 FOR GLASS RATING)
 - GLAZING ON THE UPPER FLOORS SHALL INCLUDE ONE OR MORE OF THE FOLLOWING: 0-10% REFLECTIVITY, ETCHING, SANDBLASTED PATTERNS, FRETTING, LOW-E PATTERNS, SHADING DEVICES, SCREENS, OTHER BARRIERS TO REDUCE BIRDS' ACCESS TO GLASS, AND/OR ANGLE THE GLASS BETWEEN 20-40 DEGREES FROM VERTICAL. (SEE A-6.02 FOR GLASS RATING)

LEGEND

	MECHANICAL OUTSIDE AIR VENT		SLOPE TO DRAIN @ 1/4" PLF, MIN.
	MECHANICAL EXHAUST VENT		DIRECTION OF TRAVEL
	5' DIAMETER WHEELCHAIR MANEUVERING SPACE		CARBON MONOXIDE DETECTOR/ALARM
	ILLUMINATED EXIT SIGN		PROVIDE DOOR PANIC HARDWARE ON PUSH SIDE IN DIRECTION OF TRAVEL
			KEY FOB

NOTE: ALL EXTERIOR WALLS ARE 1-HR FIRE RATED ASSEMBLIES PER CBC TABLE 601, 602 U.O.N., 45 MIN. RATED DOOR ASSEMBLY PER CBC TABLE 716.5

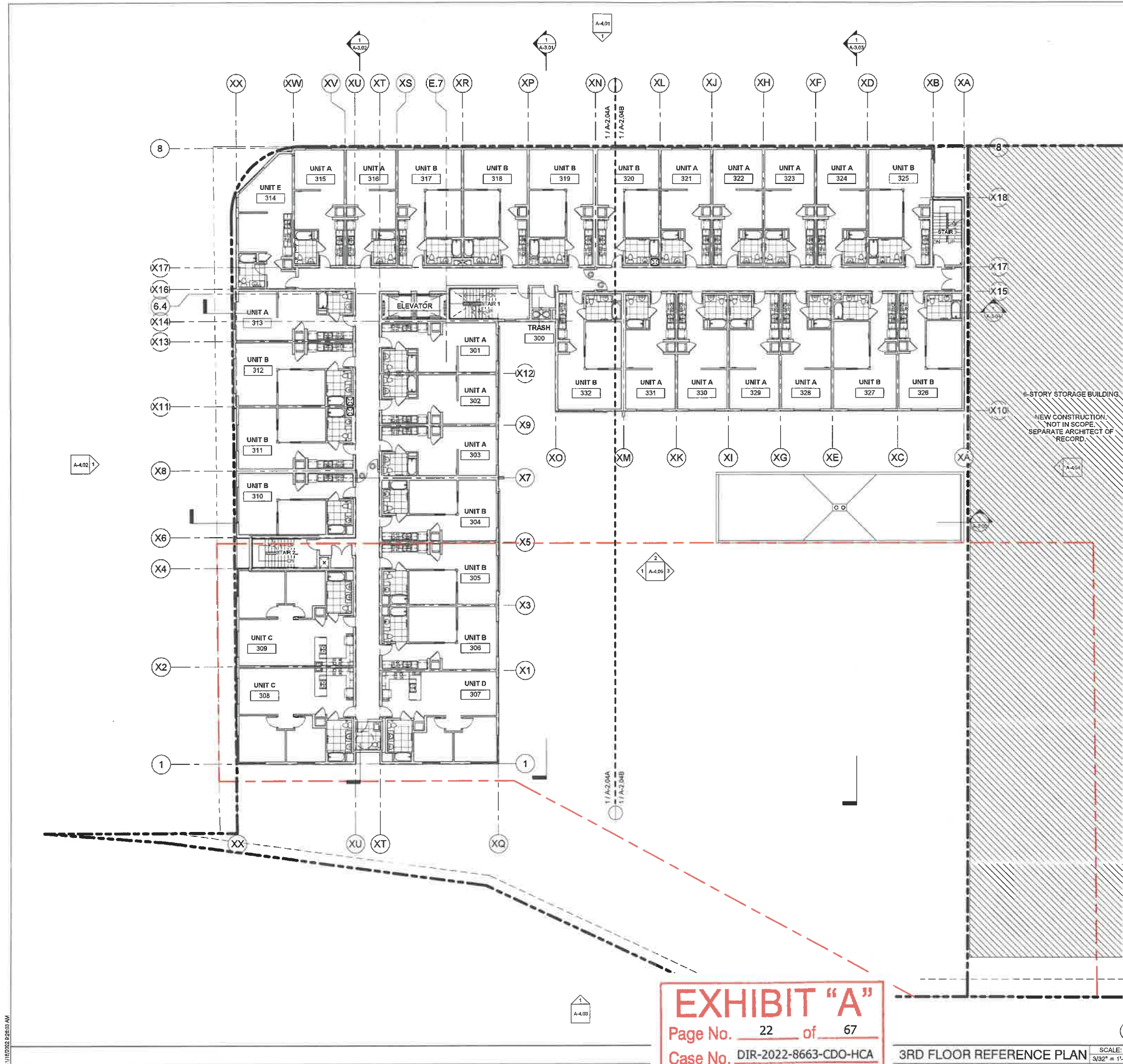
	NON-RATED WALLS, DOOR ASSEMBLIES
	CORRIDOR WALLS 1-HR FIRE RATED SEPARATION WALL PER CBC TABLE 1018.1, 20 MIN. RATED DOOR ASSEMBLY PER CBC TABLE 716.5
	1-HR FIRE RATED DWELLING UNIT SEPARATION WALL ASSEMBLY PER CBC 420, 708
	1-HR FIRE RATED OCCUPANCY SEPARATION WALL ASSEMBLY PER CBC TABLE 508.4, 80 MIN. RATED DOOR ASSEMBLY PER CBC TABLE 716.5
	2-HR FIRE RATED ASSEMBLY PER CBC 708, 90 MIN. RATED DOOR ASSEMBLY PER CBC TABLE 716.5
	2-HR FIRE RATED EXTERIOR WALL ASSEMBLY WITH FIRE TREATED WOOD PER CBC TABLE 601, RATED DOOR ASSEMBLY PER SCHEDULE
	3-HR FIRE BARRIER ASSEMBLY PER CBC SEC. 707
	3-HR FIRE RATED FLOOR SEC.711.2.4

3200 N Fig Mixed-Use
 3200 N. Figueroa St.
 Los Angeles, CA 90065
 100% Construction Documents
 January 11, 2022
 2ND FLOOR REFERENCE PLAN
 Date: 10/02/18
 Scale: As indicated
 By: MP
 Project No: 2106
 Page No: A-2.03 OF

NOTE: PER THE CORNFIELD ARROYO SECO SPECIFIC PLAN, ACCESS TO THE 2ND FLOOR COURTYARD OPEN SPACE AT 3200 N FIGUEROA, MIXED-USE BUILDING, MUST BE AVAILABLE & ACCESSIBLE FOR USE TO ALL EMPLOYEES & PATRONS OF 3200 N FIGUEROA, SELF-STORAGE BUILDING. ACCESS IS PROVIDED AT THE GROUND FLOOR PARKING LEVELS BETWEEN BOTH BUILDINGS THROUGH A DOOR AND ACCESS STAIR THAT WILL BE CONTROLLED WITH A FOB AVAILABLE TO ALL EMPLOYEES & PATRONS OF 3200 N FIGUEROA. THE OPERATOR OF 3200 N FIGUEROA WILL PROVIDE ALL EMPLOYEES WITH ACCESS INSTRUCTIONS AS PART OF THEIR ORIENTATION UPON HIRING. BOTH 3000 AND 3200 N FIGUEROA WILL PROVIDE WAYFINDING SIGNAGE THAT IS TO BE INSTALLED PRIOR TO CERTIFICATE OF OCCUPANCY BEING ISSUED.

EXHIBIT "A"
 Page No. 21 of 67
 Case No. DIR-2022-8663-CDO-HCA

2ND FLOOR REFERENCE PLAN SCALE: 3/32" = 1'-0" 1



GENERAL NOTES

- LEVEL P1 THRU 1ST ARE TYPE I-A CONSTRUCTION. ALL BEARING AND NON-BEARING PARTITIONS TO BE CONSTRUCTED WITH NON-COMBUSTIBLE MATERIALS.
- UNIT EXTERIOR WALLS MAY VARY BY FLOOR. COORDINATE WITH BLDG. PLANS SHEETS, A-2.03 TO A-2.07B, EXTERIOR ELEVATIONS SHEETS, A-4.01 THRU A-4.05, AND BUILDING SECTIONS SHEETS, A-3.01 THRU A-3.05.
- SEE SHEET A-6.01 FOR DOOR SCHEDULE AND SHEET A-6.02 FOR WINDOW SCHEDULE FOR MORE INFORMATION.
- SEE SHEETS, A-6.05 TO A-6.08 FOR WALL AND FLOOR TYPE ASSEMBLIES.
- SEE ENLARGED UNIT PLAN SHEETS A-5.01 THRU A-5.05 FOR MORE INFORMATION.
- ALL ROOFS, COMMON & DWELLING UNIT DECKS TO BE SLOPED TO DRAIN AT 1/4" PER LINEAR FOOT, MINIMUM.
- ALL DIMENSIONS ARE TO FACE OF STUD, FACE OF CONCRETE/CMU OR CENTERLINE OF COLUMNS U.N.O.
- FOR EXTERIOR WATERPROOFING DETAILS SEE SHEETS A-10.01 TO A-10.05
- BUILDING TO BE EQUIPPED WITH NFPA 13 AUTOMATIC SPRINKLER SYSTEM THROUGHOUT.
- ALL EXTERIOR EXIT DOORS TO BE 1-HR FIRE RATED ASSEMBLIES U.N.O.
- PROVIDE PORTABLE FIRE EXTINGUISHER WITH A RATING OF NOT LESS THAN 10BC FOR KITCHEN, ELECTRICAL ROOM, MECHANICAL ROOM, OR PARKING GARAGE.
- SEE FLOOR PLAN SHEETS A-2.01 TO A-2.08B FOR WALL TYPES.
- FLOOR SLOPES AT ACCESSIBLE PARKING NOT TO EXCEED 2% U.N.O.
- LOCATE ALL DOORS 4" OFF OF ADJACENT WALL U.N.O.
- ALL WASHING MACHINES AND CLOTHES DRYERS TO COMPLY WITH SECTION 1135A, CBC.
- LOCKS SHALL BE INSTALLED ON ALL PUBLICLY ACCESSIBLE EXTERIOR FAUCETS AND HOSE BIBS.
- FOR SITES OVER 500 SF OF LANDSCAPE AREA, WASTE PIPING SHALL BE ARRANGED TO PERMIT DISCHARGE FROM THE CLOTHES WASHER, BATHUB, SHOWERS, AND BATHROOM/RESTROOMS WASH BASINS TO BE USED FOR A FUTURE GRAYWATER IRRIGATION SYSTEM.
- WATER USED IN THE BUILDING FOR WATER CLOSETS, URINALS, FLOORS DRAINS, AND PROCESS COOLING AND HEATING SHALL COME FROM CITY-RECYCLE WATER IF AVAILABLE FOR USE WITHIN 300 FEET OF THE PROPERTY LINE.
- WHERE GROUNDWATER IS BEING EXTRACTED AND DISCHARGED, A SYSTEM FOR ONSITE REUSE OF THE GROUNDWATER SHALL BE DEVELOPED AND CONSTRUCTED IF THE GROUNDWATER WILL NOT BE DISCHARGED TO THE SEWER.
- AUTOMATIC LANDSCAPE IRRIGATORS SHALL BE INSTALLED IN SUCH A WAY THAT IT DOES NOT SPRAY ON THE BUILDING.

KEYNOTES

STORY STORAGE BUILDING
NEW CONSTRUCTION NOT IN SCOPE. SEPARATE ARCHITECT OF RECORD.

SHEET NOTES

PER CORNFIELD ARROYO SECO SPECIFIC PLAN - CHAPTER 2.3 URBAN DESIGN

2.3.D - WINDOWS AND GLAZING

- WINDOWS TO REDUCE INTERIOR HEAT GAIN AND IMPROVE ENERGY PERFORMANCE, THE WINDOW TO WALL RATIO (EXCLUSIVE OF THE GROUND FLOOR) SHALL NOT EXCEED 40% ON THE EAST, WEST, SOUTHWEST, NORTHWEST, SOUTHEAST AND NORTHEAST FACADES, UNLESS AN APPLICANT CAN DEMONSTRATE WITH CALCULATIONS PROVIDED BY A LICENSED MECHANICAL ENGINEER THAT AN ALTERNATIVE FACADE DESIGN WILL PROVIDE THE SAME OR GREATER REDUCTION IN THE BUILDING'S COOLING LOADS. (PG. 2-48)
- GLAZING THE PROJECT APPLICANT SHALL PROVIDE AN ELEVATION THAT INDICATES THE WINDOW AND DOOR GLAZING AND THE SHADING DEVICES USED TO REDUCE BIRDS' ACCESS TO GLASS. (PG. 2-49)
 - AT LEAST 50% OF GROUND FLOOR WINDOW AND DOOR GLAZING SHALL BE TRANSPARENT AND HAVE A 0-10% REFLECTIVITY RATING, AND/OR INCLUDE SHADING DEVICES, SCREENS OR OTHER BARRIERS TO REDUCE BIRDS' ACCESS TO GLASS. IN ADDITION, OR ALTERNATIVELY, THE GLASS MAY BE INSTALLED BETWEEN 20-40 DEGREES FROM VERTICAL. (SEE A-6.03 FOR GLASS RATING)
 - GLAZING ON THE UPPER FLOORS SHALL INCLUDE ONE OR MORE OF THE FOLLOWING: 0-10% REFLECTIVITY, ETCHING, SANDBLASTED PATTERNS, FRETTING, LOW-E PATTERNING, SHADING DEVICES, SCREEN, OTHER BARRIERS TO REDUCE BIRDS' ACCESS TO GLASS, AND/OR ANGLE THE GLASS BETWEEN 20-40 DEGREES FROM VERTICAL. (SEE A-6.02 FOR GLASS RATING)

LEGEND

□ MECHANICAL OUTSIDE AIR VENT	→ SLOPE TO DRAIN @ 1/4" PLF, MIN.
⊗ MECHANICAL EXHAUST VENT	↔ DIRECTION OF TRAVEL
○ 5" DIAMETER WHEELCHAIR MANEUVERING SPACE	⊙ CM CARBON MONOXIDE DETECTOR/ALARM
⊙ ILLUMINATED EXIT SIGN	⊙ PROVIDE DOOR PANIC HARDWARE ON PUSH SIDE IN DIRECTION OF TRAVEL
	⊙ KF KEY FOB

NOTE: ALL EXTERIOR WALLS ARE 1-HR FIRE RATED ASSEMBLIES PER CBC TABLE 601, 602 U.O.N., 45 MIN. RATED DOOR ASSEMBLY PER CBC TABLE 716.5

—	NON-RATED WALLS, DOOR ASSEMBLIES
- - -	CORRIDOR WALLS 1-HR FIRE RATED SEPARATION WALL PER CBC TABLE 1018.1, 20 MIN. RATED DOOR ASSEMBLY PER CBC TABLE 718.5
- · - · -	1-HR FIRE RATED DWELLING UNIT SEPARATION WALL ASSEMBLY PER CBC 420, 709
- · · - ·	1-HR FIRE RATED OCCUPANCY SEPARATION WALL ASSEMBLY PER CBC TABLE 508.4, 60 MIN. RATED DOOR ASSEMBLY PER CBC TABLE 716.5
- · · · -	2-HR FIRE RATED ASSEMBLY PER CBC 708, 90 MIN. RATED DOOR ASSEMBLY PER CBC TABLE 716.5
- · · · ·	2-HR FIRE RATED EXTERIOR WALL ASSEMBLY WITH FIRE TREATED WOOD PER CBC TABLE 601, RATED DOOR ASSEMBLY PER SCHEDULE
- · · · · ·	3-HR FIRE BARRIER ASSEMBLY PER CBC SEC. 707
- · · · · · ·	3-HR FIRE RATED FLOOR SEC.711.2.4

EXHIBIT "A"
Page No. 22 of 67
Case No. DIR-2022-8663-CDO-HCA

3RD FLOOR REFERENCE PLAN SCALE: 3/32" = 1'-0" 1

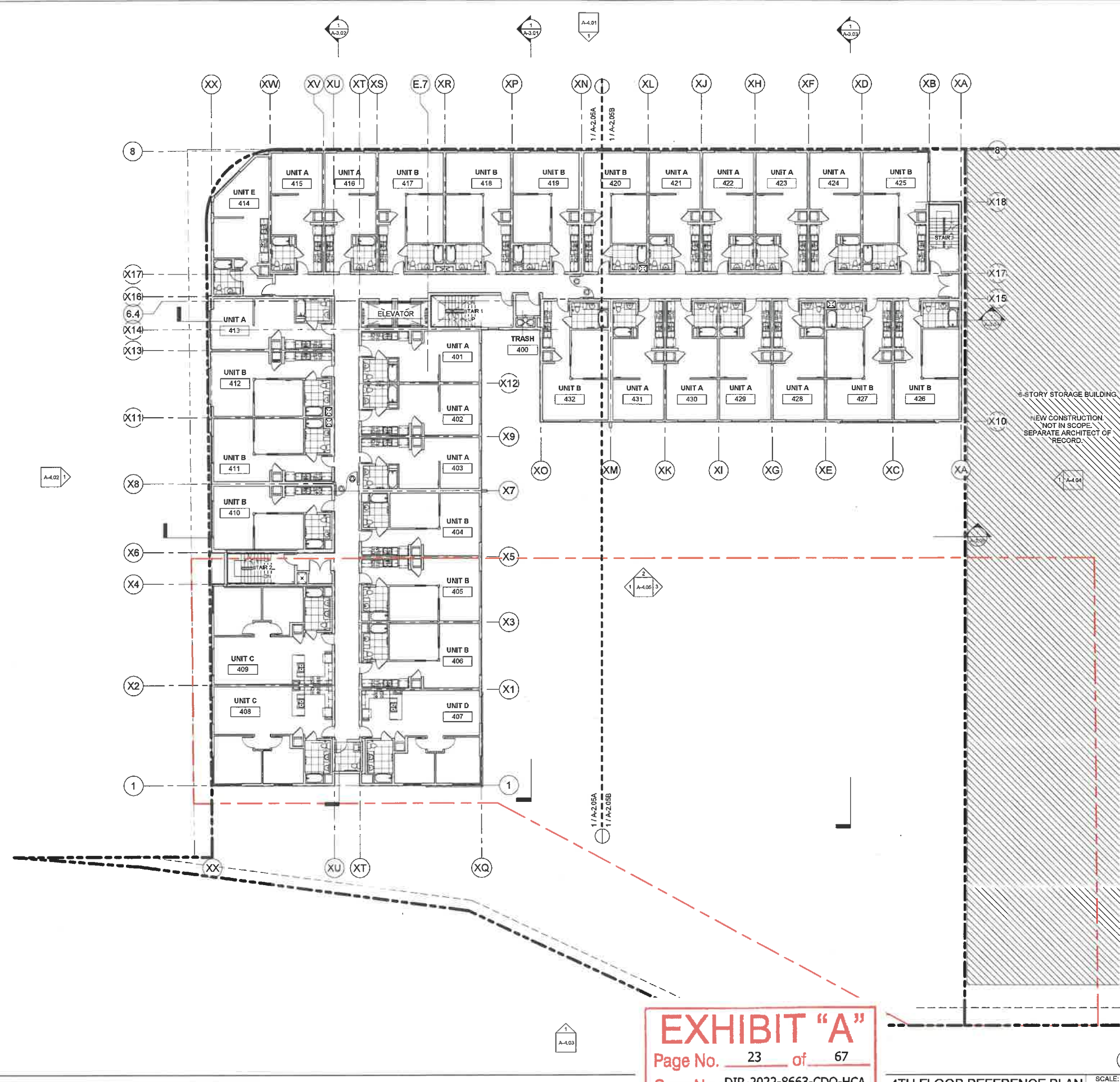
3200 N Fig Mixed-Use
3200 N. Figueroa St.
Los Angeles, CA 90065

95% Construction Documents
January 11, 2022

3RD FLOOR REFERENCE PLAN

Date: 10/03/18
Scale: As indicated
By: Author
Project No: 2106
Page No: A-2.04

dfh architects



- ### GENERAL NOTES
- LEVEL P1 THRU 1ST ARE TYPE I-A CONSTRUCTION. ALL BEARING AND NON-BEARING PARTITIONS TO BE CONSTRUCTED WITH NON-COMBUSTIBLE MATERIALS.
 - UNIT EXTERIOR WALLS MAY VARY BY FLOOR. COORDINATE WITH BLDG. PLANS SHEETS, A-2.03 TO A-2.07B, EXTERIOR ELEVATIONS SHEETS, A-4.01 THRU A-4.05, AND BUILDING SECTIONS SHEETS, A-3.01 THRU A-3.05.
 - SEE SHEET A-6.01 FOR DOOR SCHEDULE AND SHEET A-6.02 FOR WINDOW SCHEDULE FOR MORE INFORMATION.
 - SEE SHEETS, A-6.05 TO A-6.08 FOR WALL AND FLOOR TYPE ASSEMBLIES.
 - SEE ENLARGED UNIT PLAN SHEETS A-5.01 THRU A-5.05 FOR MORE INFORMATION.
 - ALL ROOFS, COMMON & DWELLING UNIT DECKS TO BE SLOPED TO DRAIN AT 1/4" PER LINEAR FOOT, MINIMUM.
 - ALL DIMENSIONS ARE TO FACE OF STUD, FACE OF CONCRETE/CMU OR CENTERLINE OF COLUMNS U.N.O.
 - FOR EXTERIOR WATERPROOFING DETAILS SEE SHEETS A-10.01 TO A-10.05
 - BUILDING TO BE EQUIPPED WITH NFPA 13 AUTOMATIC SPRINKLER SYSTEM THROUGHOUT.
 - ALL EXTERIOR EXIT DOORS TO BE 1-HR FIRE RATED ASSEMBLIES U.N.O.
 - PROVIDE PORTABLE FIRE EXTINGUISHER WITH A RATING OF NOT LESS THAN 10BC FOR KITCHEN, ELECTRICAL ROOM, MECHANICAL ROOM, OR PARKING GARAGE.
 - SEE FLOOR PLAN SHEETS A-2.01 TO A-2.08B FOR WALL TYPES.
 - FLOOR SLOPES AT ACCESSIBLE PARKING NOT TO EXCEED 2% U.N.O.
 - LOCATE ALL DOORS 4" OFF OF ADJACENT WALL U.N.O.
 - ALL WASHING MACHINES AND CLOTHES DRYERS TO COMPLY WITH SECTION 1135A, CBC.
 - LOCKS SHALL BE INSTALLED ON ALL PUBLICLY ACCESSIBLE EXTERIOR FAUCETS AND HOSE BIBS.
 - FOR SITES OVER 500 SF OF LANDSCAPE AREA, WASTE PIPING SHALL BE ARRANGED TO PERMIT DISCHARGE FROM THE CLOTHES WASHER, BATHUB, SHOWERS, AND BATHROOM/RESTROOMS WASH BASINS TO BE USED FOR A FUTURE GRAYWATER IRRIGATION SYSTEM.
 - WATER USED IN THE BUILDING FOR WATER CLOSETS, URINALS, FLOORS DRAINS, AND PROCESS COILING AND HEATING SHALL COME FROM CITY-RECYCLE WATER IF AVAILABLE FOR USE WITHIN 300 FEET OF THE PROPERTY LINE.
 - WHERE GROUNDWATER IS BEING EXTRACTED AND DISCHARGED, A SYSTEM FOR ONSITE REUSE OF THE GROUNDWATER SHALL BE DEVELOPED AND CONSTRUCTED IF THE GROUNDWATER WILL NOT BE DISCHARGED TO THE SEWER.
 - AUTOMATIC LANDSCAPE IRRIGATORS SHALL BE INSTALLED IN SUCH A WAY THAT IT DOES NOT SPRAY ON THE BUILDING.

- ### KEYNOTES
- 6-STORY STORAGE BUILDING.
- NEW CONSTRUCTION. NOT IN SCOPE. SEPARATE ARCHITECT OF RECORD.

- ### SHEET NOTES
- PER CORNFIELD ARROYO SECO SPECIFIC PLAN - CHAPTER 2.3 URBAN DESIGN
- #### 2.3.D - WINDOWS AND GLAZING
- WINDOWS, TO REDUCE INTERIOR HEAT GAIN AND IMPROVE ENERGY PERFORMANCE, THE WINDOW TO WALL RATIO (EXCLUSIVE OF THE GROUND FLOOR) SHALL NOT EXCEED 40% ON THE EAST, WEST, SOUTHWEST, NORTHWEST, SOUTHEAST AND NORTHEAST FACADES, UNLESS AN APPLICANT CAN DEMONSTRATE WITH CALCULATIONS PROVIDED BY A LICENSED MECHANICAL ENGINEER THAT AN ALTERNATIVE FACADE DESIGN WILL PROVIDE THE SAME OR GREATER REDUCTION IN THE BUILDING'S COOLING LOADS. (PG. 2-48)
 - GLAZING, THE PROJECT APPLICANT SHALL PROVIDE AN ELEVATION THAT INDICATES THE WINDOW AND DOOR GLAZING AND THE SHADING DEVICES USED TO REDUCE BIRDS' ACCESS TO GLASS. (PG. 2-49)
 - AT LEAST 50% OF GROUND FLOOR WINDOW AND DOOR GLAZING SHALL BE TRANSPARENT AND HAVE A 0-10% REFLECTIVITY RATING, AND/OR INCLUDE SHADING DEVICES, SCREENS OR OTHER BARRIERS TO REDUCE BIRDS' ACCESS TO GLASS. IN ADDITION, OR ALTERNATIVELY, THE GLASS MAY BE INSTALLED BETWEEN 20-40 DEGREES FROM VERTICAL. (SEE A-6.02 FOR GLASS RATING)
 - GLAZING ON THE UPPER FLOORS SHALL INCLUDE ONE OR MORE OF THE FOLLOWING: 0-10% REFLECTIVITY, ETCHING, SANDBLASTED PATTERNS, FRETTING, LOW-E PATTERNING, SHADING DEVICES, SCREEN, OTHER BARRIERS TO REDUCE BIRDS' ACCESS TO GLASS, AND/OR ANGLE THE GLASS BETWEEN 20-40 DEGREES FROM VERTICAL. (SEE A-6.02 FOR GLASS RATING)

LEGEND

	MECHANICAL OUTSIDE AIR VENT		SLOPE TO DRAIN @ 1/4" PLF, MIN.
	MECHANICAL EXHAUST VENT		DIRECTION OF TRAVEL
	5" DIAMETER WHEELCHAIR MANEUVERING SPACE		CARBON MONOXIDE DETECTOR/ALARM
	ILLUMINATED EXIT SIGN		PROVIDE DOOR PANIC HARDWARE ON PUSH SIDE IN DIRECTION OF TRAVEL
			KEY FOB

NOTE: ALL EXTERIOR WALLS ARE 1-HR FIRE RATED ASSEMBLIES PER CBC TABLE 601, 902 U.O.N., 45 MIN. RATED DOOR ASSEMBLY PER CBC TABLE 716.5

	NON-RATED WALLS, DOOR ASSEMBLIES
	CORRIDOR WALLS 1-HR FIRE RATED SEPARATION WALL PER CBC TABLE 1018.1, 20 MIN. RATED DOOR ASSEMBLY PER CBC TABLE 716.5
	1-HR FIRE RATED DWELLING UNIT SEPARATION WALL ASSEMBLY PER CBC 420, 709
	1-HR FIRE RATED OCCUPANCY SEPARATION WALL ASSEMBLY PER CBC TABLE 508.4, 60 MIN. RATED DOOR ASSEMBLY PER CBC TABLE 716.5
	2-HR FIRE RATED ASSEMBLY PER CBC 708, 90 MIN. RATED DOOR ASSEMBLY PER CBC TABLE 716.5
	2-HR FIRE RATED EXTERIOR WALL ASSEMBLY WITH FIRE TREATED WOOD PER CBC TABLE 601, RATED DOOR ASSEMBLY PER SCHEDULE
	3-HR FIRE BARRIER ASSEMBLY PER CBC SEC. 707
	3-HR FIRE RATED FLOOR SEC.711.2.4

3200 N Fig Mixed-Use
 3200 N. Figueroa St.
 Los Angeles, CA 90065

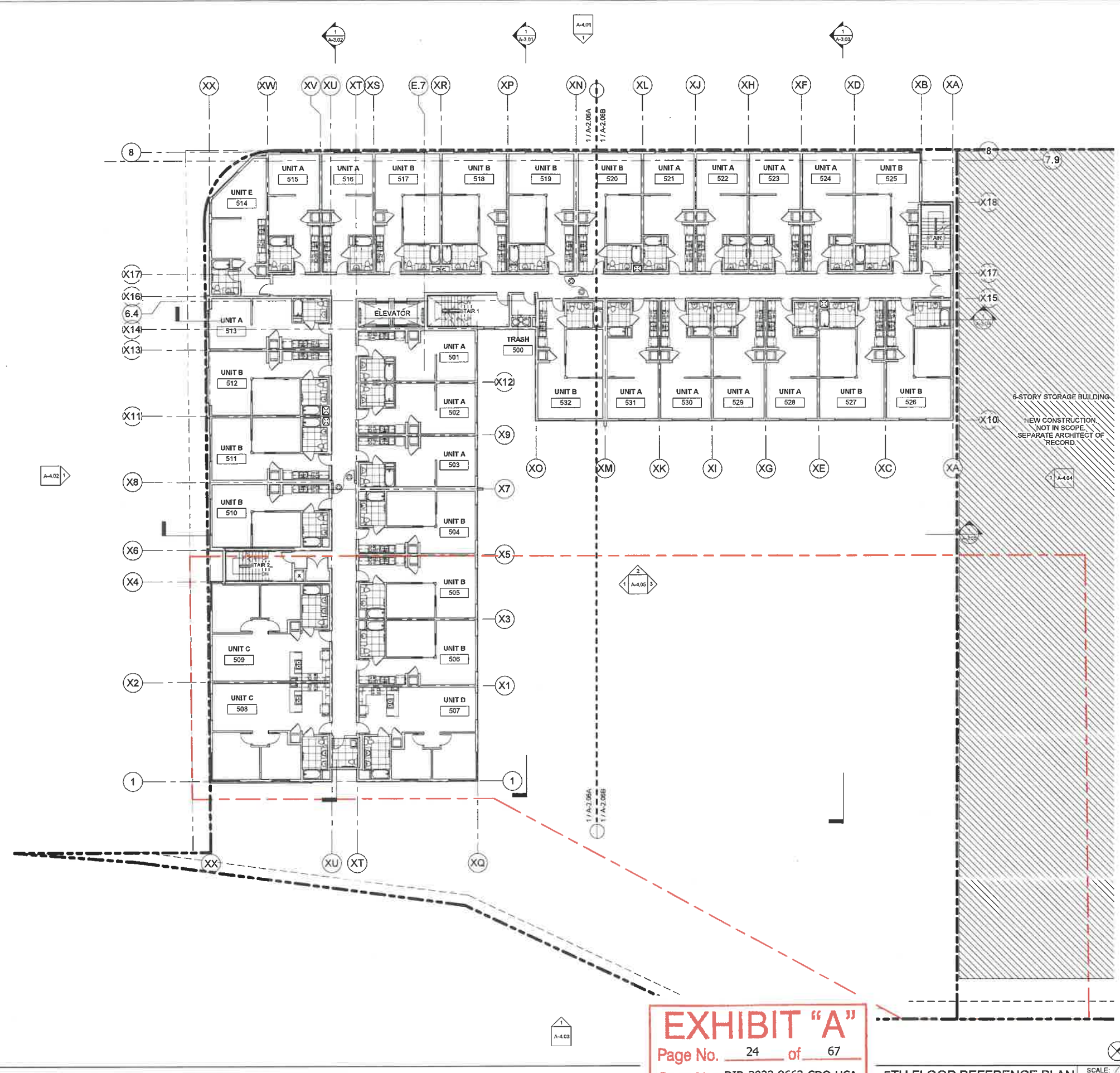
95% Construction Documents
 January 11, 2022

4TH FLOOR REFERENCE
 PLAN

Date: 10/03/18
 Scale: As indicated
 By: Author
 Project No: 2106
 Page No: A-2.05 OF

EXHIBIT "A"
 Page No. 23 of 67
 Case No. DIR-2022-8663-CDO-HCA

4TH FLOOR REFERENCE PLAN
 SCALE: 3/32" = 1'-0"
 1



GENERAL NOTES

- LEVEL P1 THRU 1ST ARE TYPE I-A CONSTRUCTION. ALL BEARING AND NON-BEARING PARTITIONS TO BE CONSTRUCTED WITH NON-COMBUSTIBLE MATERIALS.
- UNIT EXTERIOR WALLS MAY VARY BY FLOOR. COORDINATE WITH BLDG. PLANS SHEETS, A-2.03 TO A-2.07B, EXTERIOR ELEVATIONS SHEETS, A-4.01 THRU A-4.05, AND BUILDING SECTIONS SHEETS, A-3.01 THRU A-3.05.
- SEE SHEET A-6.01 FOR DOOR SCHEDULE AND SHEET A-6.02 FOR WINDOW SCHEDULE FOR MORE INFORMATION.
- SEE SHEETS, A-6.05 TO A-6.08 FOR WALL AND FLOOR TYPE ASSEMBLIES.
- SEE ENLARGED UNIT PLAN SHEETS A-5.01 THRU A-5.05 FOR MORE INFORMATION.
- ALL ROOFS, COMMON & DWELLING UNIT DECKS TO BE SLOPED TO DRAIN AT 1/4" PER LINEAR FOOT, MINIMUM.
- ALL DIMENSIONS ARE TO FACE OF STUD, FACE OF CONCRETE/CMU OR CENTERLINE OF COLUMNS U.N.O.
- FOR EXTERIOR WATERPROOFING DETAILS SEE SHEETS A-10.01 TO A-10.05
- BUILDING TO BE EQUIPPED WITH NFPA 13 AUTOMATIC SPRINKLER SYSTEM THROUGHOUT.
- ALL EXTERIOR EXIT DOORS TO BE 1-HR FIRE RATED ASSEMBLIES U.N.O.
- PROVIDE PORTABLE FIRE EXTINGUISHER WITH A RATING OF NOT LESS THAN 10BC FOR KITCHEN, ELECTRICAL ROOM, MECHANICAL ROOM, OR PARKING GARAGE.
- SEE FLOOR PLAN SHEETS A-2.01 TO A-2.08B FOR WALL TYPES.
- FLOOR SLOPES AT ACCESSIBLE PARKING NOT TO EXCEED 2% U.N.O.
- LOCATE ALL DOORS 4" OFF OF ADJACENT WALL U.N.O.
- ALL WASHING MACHINES AND CLOTHES DRYERS TO COMPLY WITH SECTION 1135A, CBC.
- LOCKS SHALL BE INSTALLED ON ALL PUBLICLY ACCESSIBLE EXTERIOR FAUCETS AND HOSE BIBS.
- FOR SITES OVER 500 SF OF LANDSCAPE AREA, WASTE PIPING SHALL BE ARRANGED TO PERMIT DISCHARGE FROM THE CLOTHES WASHER, BATHUB, SHOWERS, AND BATHROOM/RESTROOMS WASH BASINS TO BE USED FOR A FUTURE GRAYWATER IRRIGATION SYSTEM.
- WATER USED IN THE BUILDING FOR WATER CLOSETS, URINALS, FLOORS DRAINS, AND PROCESS COILING AND HEATING SHALL COME FROM CITY-RECYCLE WATER IF AVAILABLE. FOR USE WITHIN 300 FEET OF THE PROPERTY LINE.
- WHERE GROUNDWATER IS BEING EXTRACTED AND DISCHARGED, A SYSTEM FOR ONSITE REUSE OF THE GROUNDWATER SHALL BE DEVELOPED AND CONSTRUCTED IF THE GROUNDWATER WILL NOT BE DISCHARGED TO THE SEWER.
- AUTOMATIC LANDSCAPE IRRIGATORS SHALL BE INSTALLED IN SUCH A WAY THAT IT DOES NOT SPRAY ON THE BUILDING.

KEYNOTES

SHEET NOTES

- PER CORNFIELD ARROYO SECO SPECIFIC PLAN - CHAPTER 2.3 URBAN DESIGN
- 2.3.D - WINDOWS AND GLAZING**
- WINDOWS. TO REDUCE INTERIOR HEAT GAIN AND IMPROVE ENERGY PERFORMANCE, THE WINDOW TO WALL RATIO (EXCLUSIVE OF THE GROUND FLOOR) SHALL NOT EXCEED 40% ON THE EAST, WEST, SOUTHWEST, NORTHWEST, SOUTHEAST AND NORTHEAST FACADES, UNLESS AN APPLICANT CAN DEMONSTRATE WITH CALCULATIONS PROVIDED BY A LICENSED MECHANICAL ENGINEER THAT AN ALTERNATIVE FACADE DESIGN WILL PROVIDE THE SAME OR GREATER REDUCTION IN THE BUILDING'S COOLING LOADS. (PG. 2-48)
 - GLAZING. THE PROJECT APPLICANT SHALL PROVIDE AN ELEVATION THAT INDICATES THE WINDOW AND DOOR GLAZING AND THE SHADING DEVICES USED TO REDUCE BIRDS' ACCESS TO GLASS. (PG. 3-46)
 - AT LEAST 50% OF GROUND FLOOR WINDOW AND DOOR GLAZING SHALL BE TRANSPARENT AND HAVE A 0-10% REFLECTIVITY RATING, AND/OR INCLUDE SHADING DEVICES, SCREENS OR OTHER BARRIERS TO REDUCE BIRDS' ACCESS TO GLASS. IN ADDITION, OR ALTERNATIVELY, THE GLASS MAY BE INSTALLED BETWEEN 20-40 DEGREES FROM VERTICAL. (SEE A-6.03 FOR GLASS RATING)
 - GLAZING ON THE UPPER FLOORS SHALL INCLUDE ONE OR MORE OF THE FOLLOWING: 0-10% REFLECTIVITY, ETCHING, SANDBLASTED PATTERNS, FRETTING, LOW-S PATTERNING, SHADING DEVICES, SCREEN, OTHER BARRIERS TO REDUCE BIRDS' ACCESS TO GLASS, AND/OR ANGLE THE GLASS BETWEEN 20-40 DEGREES FROM VERTICAL. (SEE A-6.02 FOR GLASS RATING)

LEGEND

- | | | | |
|--|--|--|---|
| | MECHANICAL OUTSIDE AIR VENT | | SLOPE TO DRAIN @ 1/4" PLF, MIN. |
| | MECHANICAL EXHAUST VENT | | DIRECTION OF TRAVEL |
| | 5' DIAMETER WHEELCHAIR MANEUVERING SPACE | | CARBON MONOXIDE DETECTOR/ALARM |
| | ILLUMINATED EXIT SIGN | | PROVIDE DOOR PANIC HARDWARE ON PUSH SIDE IN DIRECTION OF TRAVEL |
| | | | KEY FOB |
- NOTE: ALL EXTERIOR WALLS ARE 1-HR FIRE RATED ASSEMBLIES PER CBC TABLE 601, 602 U.O.N., 45 MIN. RATED DOOR ASSEMBLY PER CBC TABLE 716.5
- | | |
|--|---|
| | NON-RATED WALLS, DOOR ASSEMBLIES |
| | CORRIDOR WALLS 1-HR FIRE RATED SEPARATION WALL PER CBC TABLE 1018.1, 20 MIN. RATED DOOR ASSEMBLY PER CBC TABLE 716.5 |
| | 1-HR FIRE RATED DWELLING UNIT SEPARATION WALL ASSEMBLY PER CBC 420, 709 |
| | 1-HR FIRE RATED OCCUPANCY SEPARATION WALL ASSEMBLY PER CBC TABLE 508.4, 60 MIN. RATED DOOR ASSEMBLY PER CBC TABLE 716.5 |
| | 2 -HR FIRE RATED ASSEMBLY PER CBC 708, 90 MIN. RATED DOOR ASSEMBLY PER CBC TABLE 716.5 |
| | 2-HR FIRE RATED EXTERIOR WALL ASSEMBLY WITH FIRE TREATED WOOD PER CBC TABLE 601, RATED DOOR ASSEMBLY PER SCHEDULE |
| | 3-HR FIRE BARRIER ASSEMBLY PER CBC SEC. 707 |
| | 3-HR FIRE RATED FLOOR SEC.711.2.4 |

EXHIBIT "A"
 Page No. 24 of 67
 Case No. DIR-2022-8663-CDO-HCA

5TH FLOOR REFERENCE PLAN SCALE: 3/32" = 1'-0" 1

GENERAL NOTES

- LEVEL P1 THRU 1ST ARE TYPE I-A CONSTRUCTION. ALL BEARING AND NON-BEARING PARTITIONS TO BE CONSTRUCTED WITH NON-COMBUSTIBLE MATERIALS.
- UNIT EXTERIOR WALLS MAY VARY BY FLOOR. COORDINATE WITH BLDG. PLANS SHEETS, A-2.03 TO A-2.07B, EXTERIOR ELEVATIONS SHEETS, A-4.01 THRU A-4.05, AND BUILDING SECTIONS SHEETS, A-3.01 THRU A-3.05.
- SEE SHEET A-6.01 FOR DOOR SCHEDULE AND SHEET A-6.02 FOR WINDOW SCHEDULE FOR MORE INFORMATION.
- SEE SHEETS, A-6.05 TO A-6.08 FOR WALL AND FLOOR TYPE ASSEMBLIES.
- SEE ENLARGED UNIT PLAN SHEETS A-5.01 THRU A-5.05 FOR MORE INFORMATION.
- ALL ROOFS, COMMON & DWELLING UNIT DECKS TO BE SLOPED TO DRAIN AT 1/4" PER LINEAR FOOT, MINIMUM.
- ALL DIMENSIONS ARE TO FACE OF STUD, FACE OF CONCRETE/CMU OR CENTERLINE OF COLUMNS U.N.O.
- FOR EXTERIOR WATERPROOFING DETAILS SEE SHEETS A-10.01 TO A-10.05
- BUILDING TO BE EQUIPPED WITH NFPA 13 AUTOMATIC SPRINKLER SYSTEM THROUGHOUT.
- ALL EXTERIOR EXIT DOORS TO BE 1-HR FIRE RATED ASSEMBLIES U.N.O.
- PROVIDE PORTABLE FIRE EXTINGUISHER WITH A RATING OF NOT LESS THAN 10BC FOR KITCHEN, ELECTRICAL ROOM, MECHANICAL ROOM, OR PARKING GARAGE.
- SEE FLOOR PLAN SHEETS A-2.01 TO A-2.08B FOR WALL TYPES.
- FLOOR SLOPES AT ACCESSIBLE PARKING NOT TO EXCEED 2% U.N.O.
- LOCATE ALL DOORS 4" OFF OF ADJACENT WALL U.N.O.
- ALL WASHING MACHINES AND CLOTHES DRYERS TO COMPLY WITH SECTION 1135A, CBC.
- LOCKS SHALL BE INSTALLED ON ALL PUBLICLY ACCESSIBLE EXTERIOR FAUCETS AND HOSE BIBS.
- FOR SITES OVER 500 SF OF LANDSCAPE AREA, WASTE PIPING SHALL BE ARRANGED TO PERMIT DISCHARGE FROM THE CLOTHES WASHER, BATHUB, SHOWERS, AND BATHROOM/RESTROOMS WASH BASINS TO BE USED FOR A FUTURE GRAYWATER IRRIGATION SYSTEM.
- WATER USED IN THE BUILDING FOR WATER CLOSETS, URINALS, FLOORS DRAINS, AND PROCESS COILING AND HEATING SHALL COME FROM CITY-RECYCLE WATER IF AVAILABLE. FOR USE WITHIN 300 FEET OF THE PROPERTY LINE.
- WHERE GROUNDWATER IS BEING EXTRACTED AND DISCHARGED, A SYSTEM FOR ONSITE REUSE OF THE GROUNDWATER SHALL BE DEVELOPED AND CONSTRUCTED IF THE GROUNDWATER WILL NOT BE DISCHARGED TO THE SEWER.
- AUTOMATIC LANDSCAPE IRRIGATORS SHALL BE INSTALLED IN SUCH A WAY THAT IT DOES NOT SPRAY ON THE BUILDING.

KEYNOTES

SHEET NOTES

- PER CORNFIELD ARROYO SECO SPECIFIC PLAN - CHAPTER 2.3 URBAN DESIGN
- 2.3.D - WINDOWS AND GLAZING**
- WINDOWS. TO REDUCE INTERIOR HEAT GAIN AND IMPROVE ENERGY PERFORMANCE, THE WINDOW TO WALL RATIO (EXCLUSIVE OF THE GROUND FLOOR) SHALL NOT EXCEED 40% ON THE EAST, WEST, SOUTHWEST, NORTHWEST, SOUTHEAST AND NORTHEAST FACADES, UNLESS AN APPLICANT CAN DEMONSTRATE WITH CALCULATIONS PROVIDED BY A LICENSED MECHANICAL ENGINEER THAT AN ALTERNATIVE FACADE DESIGN WILL PROVIDE THE SAME OR GREATER REDUCTION IN THE BUILDING'S COOLING LOADS. (PG. 2-48)
 - GLAZING. THE PROJECT APPLICANT SHALL PROVIDE AN ELEVATION THAT INDICATES THE WINDOW AND DOOR GLAZING AND THE SHADING DEVICES USED TO REDUCE BIRDS' ACCESS TO GLASS. (PG. 3-46)
 - AT LEAST 50% OF GROUND FLOOR WINDOW AND DOOR GLAZING SHALL BE TRANSPARENT AND HAVE A 0-10% REFLECTIVITY RATING, AND/OR INCLUDE SHADING DEVICES, SCREENS OR OTHER BARRIERS TO REDUCE BIRDS' ACCESS TO GLASS. IN ADDITION, OR ALTERNATIVELY, THE GLASS MAY BE INSTALLED BETWEEN 20-40 DEGREES FROM VERTICAL. (SEE A-6.03 FOR GLASS RATING)
 - GLAZING ON THE UPPER FLOORS SHALL INCLUDE ONE OR MORE OF THE FOLLOWING: 0-10% REFLECTIVITY, ETCHING, SANDBLASTED PATTERNS, FRETTING, LOW-S PATTERNING, SHADING DEVICES, SCREEN, OTHER BARRIERS TO REDUCE BIRDS' ACCESS TO GLASS, AND/OR ANGLE THE GLASS BETWEEN 20-40 DEGREES FROM VERTICAL. (SEE A-6.02 FOR GLASS RATING)

LEGEND

- | | | | |
|--|--|--|---|
| | MECHANICAL OUTSIDE AIR VENT | | SLOPE TO DRAIN @ 1/4" PLF, MIN. |
| | MECHANICAL EXHAUST VENT | | DIRECTION OF TRAVEL |
| | 5' DIAMETER WHEELCHAIR MANEUVERING SPACE | | CARBON MONOXIDE DETECTOR/ALARM |
| | ILLUMINATED EXIT SIGN | | PROVIDE DOOR PANIC HARDWARE ON PUSH SIDE IN DIRECTION OF TRAVEL |
| | | | KEY FOB |
- NOTE: ALL EXTERIOR WALLS ARE 1-HR FIRE RATED ASSEMBLIES PER CBC TABLE 601, 602 U.O.N., 45 MIN. RATED DOOR ASSEMBLY PER CBC TABLE 716.5
- | | |
|--|---|
| | NON-RATED WALLS, DOOR ASSEMBLIES |
| | CORRIDOR WALLS 1-HR FIRE RATED SEPARATION WALL PER CBC TABLE 1018.1, 20 MIN. RATED DOOR ASSEMBLY PER CBC TABLE 716.5 |
| | 1-HR FIRE RATED DWELLING UNIT SEPARATION WALL ASSEMBLY PER CBC 420, 709 |
| | 1-HR FIRE RATED OCCUPANCY SEPARATION WALL ASSEMBLY PER CBC TABLE 508.4, 60 MIN. RATED DOOR ASSEMBLY PER CBC TABLE 716.5 |
| | 2 -HR FIRE RATED ASSEMBLY PER CBC 708, 90 MIN. RATED DOOR ASSEMBLY PER CBC TABLE 716.5 |
| | 2-HR FIRE RATED EXTERIOR WALL ASSEMBLY WITH FIRE TREATED WOOD PER CBC TABLE 601, RATED DOOR ASSEMBLY PER SCHEDULE |
| | 3-HR FIRE BARRIER ASSEMBLY PER CBC SEC. 707 |
| | 3-HR FIRE RATED FLOOR SEC.711.2.4 |



3200 N Fig Mixed-Use
 3200 N. Figueroa St.
 Los Angeles, CA 90065

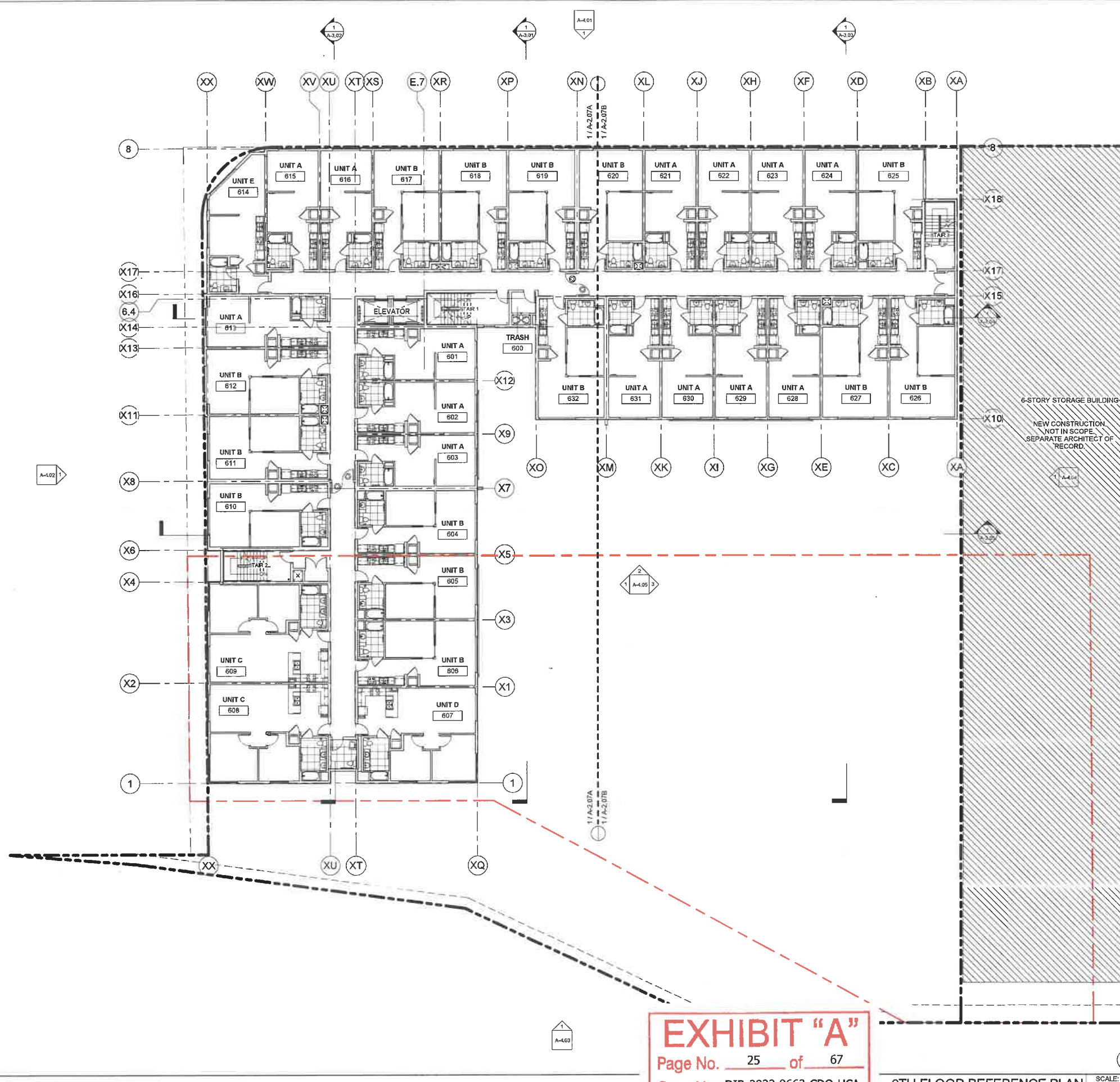
95% Construction Documents

January 11, 2022

5TH FLOOR REFERENCE PLAN



Date: 10/03/18
 Scale: As Indicated
 By: Author
 Project No: 2106
 Page No: A-2.06 OF



GENERAL NOTES

- LEVEL P1 THRU 1ST ARE TYPE I-A CONSTRUCTION. ALL BEARING AND NON-BEARING PARTITIONS TO BE CONSTRUCTED WITH NON-COMBUSTIBLE MATERIALS.
- UNIT EXTERIOR WALLS MAY VARY BY FLOOR. COORDINATE WITH BLDG. PLANS SHEETS A-2.03 TO A-2.07B, EXTERIOR ELEVATIONS SHEETS, A-4.01 THRU A-4.05, AND BUILDING SECTIONS SHEETS, A-3.01 THRU A-3.05.
- SEE SHEET A-6.01 FOR DOOR SCHEDULE AND SHEET A-6.02 FOR WINDOW SCHEDULE FOR MORE INFORMATION.
- SEE SHEETS, A-6.05 TO A-6.08 FOR WALL AND FLOOR TYPE ASSEMBLIES.
- SEE ENLARGED UNIT PLAN SHEETS A-5.01 THRU A-5.05 FOR MORE INFORMATION.
- ALL ROOFS, COMMON & DWELLING UNIT DECKS TO BE SLOPED TO DRAIN AT 1/4" PER LINEAR FOOT, MINIMUM.
- ALL DIMENSIONS ARE TO FACE OF STUD, FACE OF CONCRETE/CMU OR CENTERLINE OF COLUMNS U.N.O.
- FOR EXTERIOR WATERPROOFING DETAILS SEE SHEETS A-10.01 TO A-10.05
- BUILDING TO BE EQUIPPED WITH NFPA 13 AUTOMATIC SPRINKLER SYSTEM THROUGHOUT.
- ALL EXTERIOR EXIT DOORS TO BE 1-HR FIRE RATED ASSEMBLIES U.N.O.
- PROVIDE PORTABLE FIRE EXTINGUISHER WITH A RATING OF NOT LESS THAN 10BC FOR KITCHEN, ELECTRICAL ROOM, MECHANICAL ROOM, OR PARKING GARAGE.
- SEE FLOOR PLAN SHEETS A-2.01 TO A-2.05B FOR WALL TYPES.
- FLOOR SLOPES AT ACCESSIBLE PARKING NOT TO EXCEED 2% U.N.O.
- LOCATE ALL DOORS 4" OFF OF ADJACENT WALL U.N.O.
- ALL WASHING MACHINES AND CLOTHES DRYERS TO COMPLY WITH SECTION 1135A, CBC.
- LOCKS SHALL BE INSTALLED ON ALL PUBLICLY ACCESSIBLE EXTERIOR FAUCETS AND HOSE BIBS.
- FOR SITES OVER 500 SF OF LANDSCAPE AREA, WASTE PIPING SHALL BE ARRANGED TO PERMIT DISCHARGE FROM THE CLOTHES WASHER, BATHUB, SHOWERS, AND BATHROOM/RESTROOMS WASH BASINS TO BE USED FOR A FUTURE GRAYWATER IRRIGATION SYSTEM.
- WATER USED IN THE BUILDING FOR WATER CLOSETS, URINALS, FLOORS DRAINS, AND PROCESS COILING AND HEATING SHALL COME FROM CITY-RECYCLE WATER IF AVAILABLE FOR USE WITHIN 300 FEET OF THE PROPERTY LINE.
- WHERE GROUNDWATER IS BEING EXTRACTED AND DISCHARGED, A SYSTEM FOR ONSITE REUSE OF THE GROUNDWATER SHALL BE DEVELOPED AND CONSTRUCTED IF THE GROUNDWATER WILL NOT BE DISCHARGED TO THE SEWER.
- AUTOMATIC LANDSCAPE IRRIGATORS SHALL BE INSTALLED IN SUCH A WAY THAT IT DOES NOT SPRAY ON THE BUILDING.

KEYNOTES

6-STORY STORAGE BUILDING
NEW CONSTRUCTION NOT IN SCOPE. SEPARATE ARCHITECT OF RECORD.

SHEET NOTES

PER CORNFIELD ARROYO SECO SPECIFIC PLAN - CHAPTER 2.3 URBAN DESIGN

2.3.D - WINDOWS AND GLAZING

- WINDOWS, TO REDUCE INTERIOR HEAT GAIN AND IMPROVE ENERGY PERFORMANCE, THE WINDOW TO WALL RATIO (EXCLUSIVE OF THE GROUND FLOOR) SHALL NOT EXCEED 40% ON THE EAST, WEST, SOUTHWEST, NORTHWEST, SOUTHEAST AND NORTHEAST FACADES, UNLESS AN APPLICANT CAN DEMONSTRATE WITH CALCULATIONS PROVIDED BY A LICENSED MECHANICAL ENGINEER THAT AN ALTERNATIVE FACADE DESIGN WILL PROVIDE THE SAME OR GREATER REDUCTION IN THE BUILDING'S COOLING LOADS. (PG. 2-48)
- GLAZING, THE PROJECT APPLICANT SHALL PROVIDE AN ELEVATION THAT INDICATES THE WINDOW AND DOOR GLAZING AND THE SHADING DEVICES USED TO REDUCE BIRDS' ACCESS TO GLASS. (PG. 2-49)
 - AT LEAST 50% OF GROUND FLOOR WINDOW AND DOOR GLAZING SHALL BE TRANSPARENT AND HAVE A 0-10% REFLECTIVITY RATING, AND/OR INCLUDE SHADING DEVICES, SCREENS OR OTHER BARRIERS TO REDUCE BIRDS' ACCESS TO GLASS. IN ADDITION, OR ALTERNATIVELY, THE GLASS MAY BE INSTALLED BETWEEN 20-40 DEGREES FROM VERTICAL. (SEE A-6.03 FOR GLASS RATING)
 - GLAZING ON THE UPPER FLOORS SHALL INCLUDE ONE OR MORE OF THE FOLLOWING: 0-10% REFLECTIVITY, ETCHING, SANDBLASTED PATTERNS, FRETTING, LOW-E PATTERNING, SHADING DEVICES, SCREEN, OTHER BARRIERS TO REDUCE BIRDS' ACCESS TO GLASS, AND/OR ANGLE THE GLASS BETWEEN 20-40 DEGREES FROM VERTICAL. (SEE A-6.02 FOR GLASS RATING)

LEGEND

□ MECHANICAL OUTSIDE AIR VENT	→ SLOPE TO DRAIN @ 1/4" PLF, MIN.
⊠ MECHANICAL EXHAUST VENT	↔ DIRECTION OF TRAVEL
○ 5" DIAMETER WHEELCHAIR MANEUVERING SPACE	⊙ CM CARBON MONOXIDE DETECTOR/ALARM
⊙ ILLUMINATED EXIT SIGN	⊙ PROVIDE DOOR PANIC HARDWARE ON PUSH SIDE IN DIRECTION OF TRAVEL
	⊙ KF KEY FOB

NOTE: ALL EXTERIOR WALLS ARE 1-HR FIRE RATED ASSEMBLIES PER CBC TABLE 601, 602 U.N.O., 45 MIN. RATED DOOR ASSEMBLY PER CBC TABLE 716.5

—	NON-RATED WALLS, DOOR ASSEMBLIES
- - -	CORRIDOR WALLS 1-HR FIRE RATED SEPARATION WALL PER CBC TABLE 1018.1, 20 MIN. RATED DOOR ASSEMBLY PER CBC TABLE 716.5
- · - · -	1-HR FIRE RATED DWELLING UNIT SEPARATION WALL ASSEMBLY PER CBC 420, 709
- · · - ·	1-HR FIRE RATED OCCUPANCY SEPARATION WALL ASSEMBLY PER CBC TABLE 508.4, 60 MIN. RATED DOOR ASSEMBLY PER CBC TABLE 716.5
- · · · -	2-HR FIRE RATED ASSEMBLY PER CBC 708, 90 MIN. RATED DOOR ASSEMBLY PER CBC TABLE 716.5
- · · · ·	2-HR FIRE RATED EXTERIOR WALL ASSEMBLY WITH FIRE TREATED WOOD PER CBC TABLE 601, RATED DOOR ASSEMBLY PER SCHEDULE
- · · · · ·	3-HR FIRE BARRIER ASSEMBLY PER CBC SEC. 707
- · · · · · ·	3-HR FIRE RATED FLOOR SEC.711.2.4

EXHIBIT "A"
Page No. 25 of 67
Case No. DIR-2022-8663-CDO-HCA

6TH FLOOR REFERENCE PLAN SCALE: 3/32" = 1'-0" 1

3200 N Fig Mixed-Use
3200 N. Figueroa St.
Los Angeles, CA 90065

95% Construction Documents
January 11, 2022

6TH FLOOR REFERENCE PLAN

Date: 10/03/18
Scale: As Indicated
By: Author
Project No: 2106
Page No: A-2.07

dfh architects



CLIENT
**GCX
DEVELOPMENT
LLC**

818 WEST 7TH ST.,
SUITE 410
LOS ANGELES
CA

PROJECT
**FIGUEROA
SELF STORAGE**

3200 NORTH FIGUEROA ST
LOS ANGELES, CA 90065

SHEET TITLE
**FLOOR AREA
DIAGRAM**

REV.	DATE	COMMENT
	08/21/2021	1ST PLAN CK SUBMITTAL
△	12/10/2023	RE-SUBMITTAL
△		
△		

PROJECT MANAGER: Elopez
PROJECT LEAD: ESamudio

DATE: 08/21/2023

JOB NUMBER: 19-1212

FILE NAME: 191212A0.6-Diagram

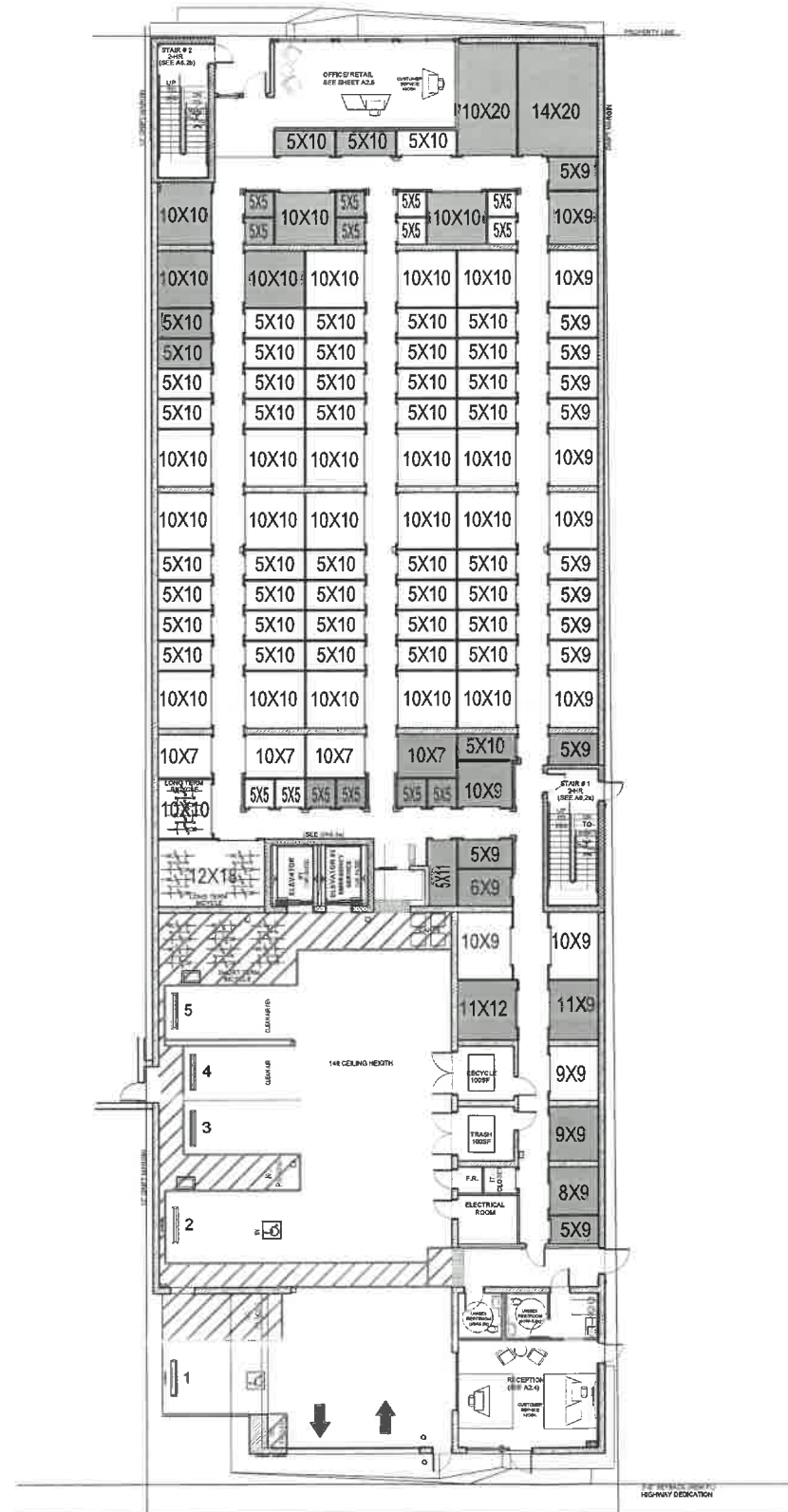
SHEET NUMBER:

A0.6



EXHIBIT "A"
Page No. 49 of 67
Case No. DIR-2022-8663-CDO-HCA





ACCESSIBLE STORAGE UNITS (TABLE 11B-225.3)	
TOTAL STORAGE UNITS (ENTIRE FACILITY)	1330
TOTAL ACCESSIBLE STORAGE UNITS REQUIRED:	33
STORAGE UNIT CLASS	ACCESSIBLE UNITS PROVIDED
5 X 5	8
5 X 9	4
5 X 10	5
5 X 11	1
8 X 9	1
8 X 9	1
8 X 9	1
10 X 7	1
10 X 9	2
10 X 10	5
11 X 9	1
11 X 12	1
10 X 20	1
14 X 20	1
TOTAL PROVIDED:	33

NOTE:
 ACCESSIBLE STORAGE UNITS:
 PER CBC TABLE 11B-225.3 MINIMUM NUMBER OF STORAGE UNITS REQUIRED TO BE ACCESSIBLE: 10 UNITS PLUS 2% OF UNITS OVER 200 TOTAL REQUIRED ACCESSIBLE STORAGE UNITS.
 PROVIDE ACCESSIBLE ROLL-UP DOOR HARDWARE AT ACCESSIBLE UNITS PER DETAILS 11A6 GA, 21A6 GA, AND 31A6 GA.

ALL REQUIRED ACCESSIBLE UNITS ARE LOCATED IN 1ST FLOOR.

jordan
architects, inc.

131 Calle Iglesia, Suite 100
San Clemente, CA. 92672-7541

Telephone (949) 388-8090
Facsimile (949) 388-8290

THIS DRAWING AND ITS CONTENTS ARE INSTRUMENTS OF SERVICE AND ARE THE COPYRIGHTED PROPERTY OF JORDAN ARCHITECTS, INC. THE USE OF ANY PORTION OF THIS DRAWING WITHOUT WRITTEN AND SIGNED PERMISSION FROM JORDAN ARCHITECTS, INC. IS PROHIBITED. ANY REPRODUCTION OR TRANSMISSION OF THIS DRAWING IN ANY FORM OR BY ANY MEANS WITHOUT THE WRITTEN PERMISSION OF BRUCE JORDAN ARCHITECTS, INC. IS PROHIBITED.

"COPYRIGHT" YEAR OF 1ST PUBLICATION 2019 BRUCE JORDAN ARCHITECT



CLIENT
GCX DEVELOPMENT LLC

818 WEST 7TH ST.,
SUITE 410
LOS ANGELES
CA

PROJECT
FIGUEROA SELF STORAGE

3200 NORTH FIGUEROA ST
LOS ANGELES, CA 90065

SHEET TITLE
ACCESSIBLE MIX

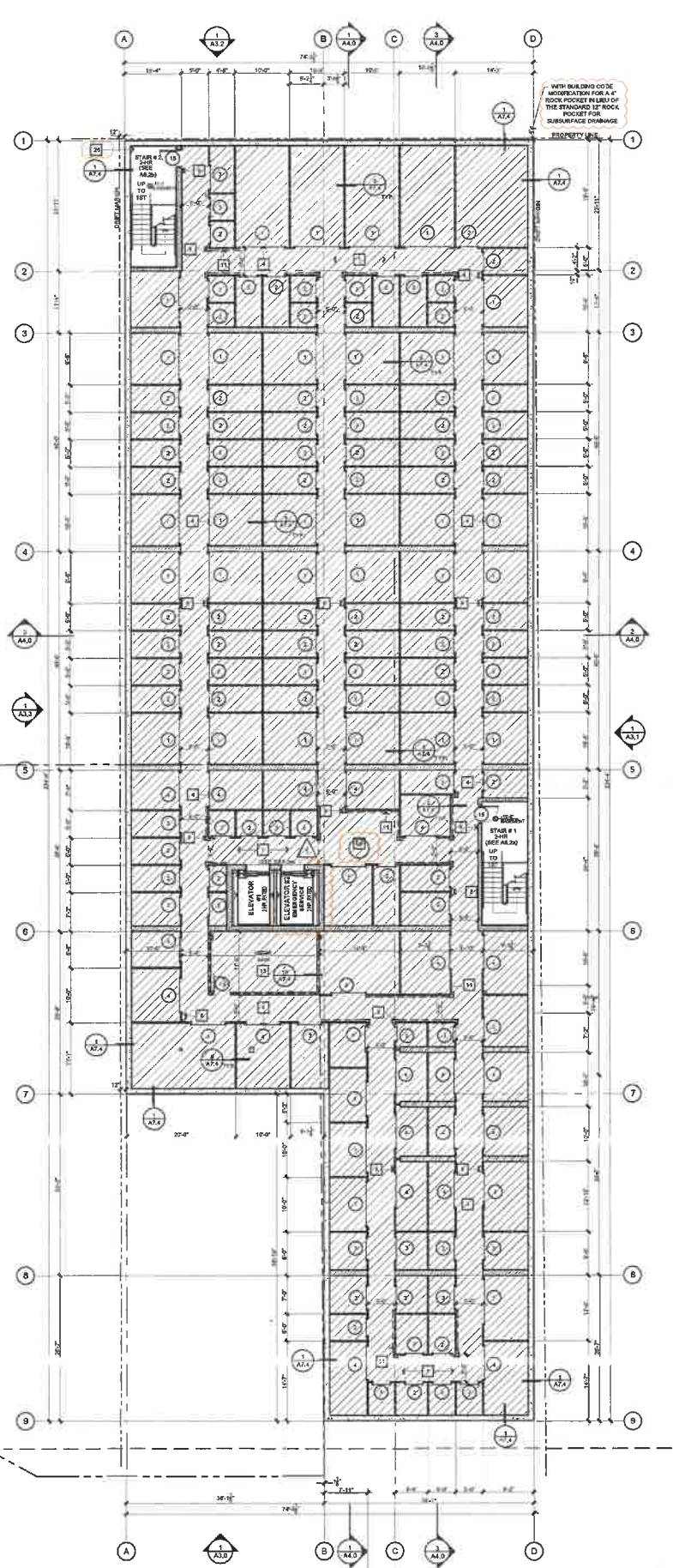
REV.	DATE	COMMENT
	08/21/2021	1ST PLAN CK SUBMITTAL
△	12/10/2023	RE-SUBMITTAL
△		
△		

PROJECT MANAGER: Elopez
PROJECT LEAD: ESamudio
DATE: 08/21/2023
JOB NUMBER: 19-1212
FILE NAME: 191212A1.1-Accessible Mix
SHEET NUMBER:

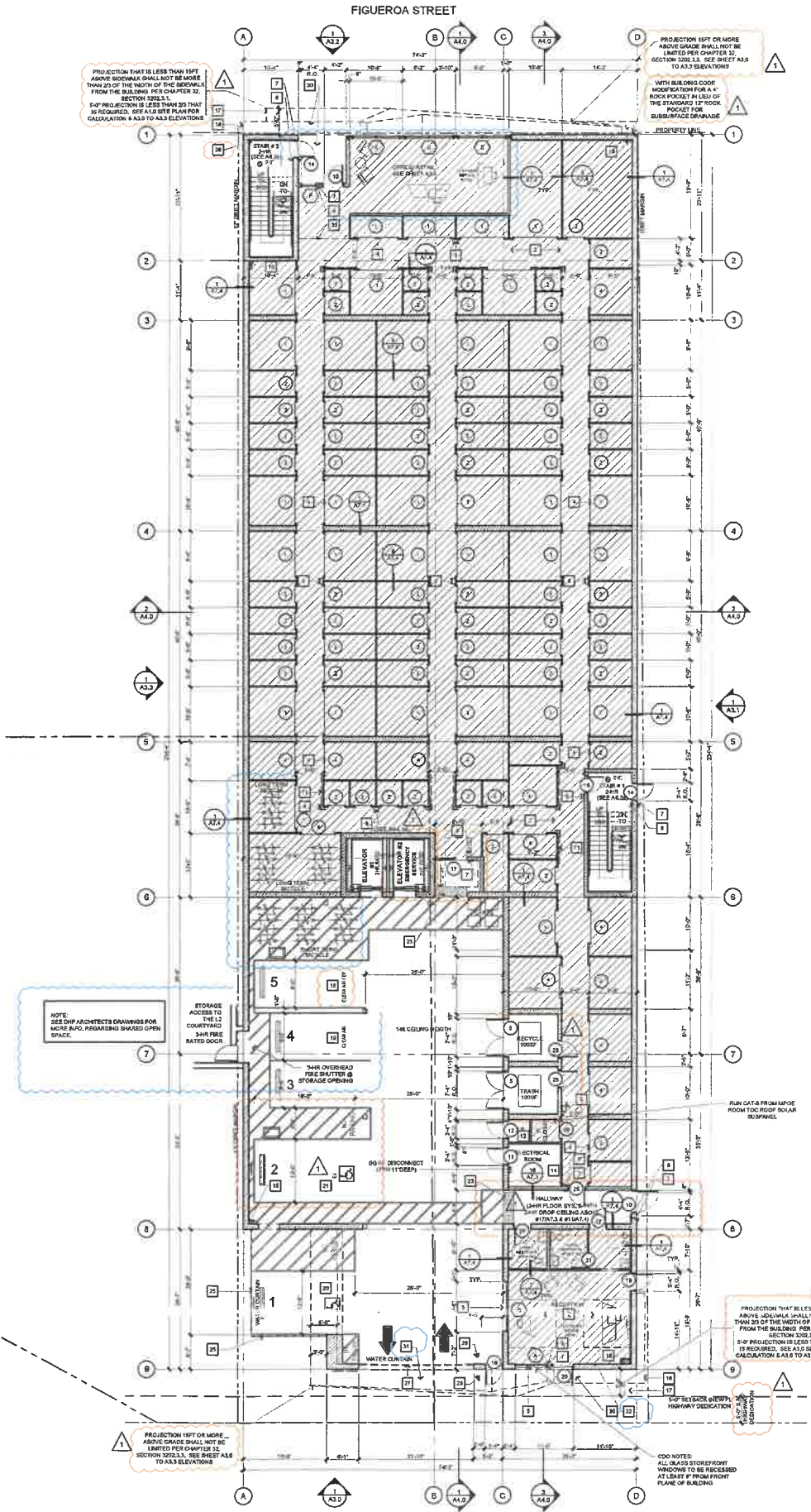
EXHIBIT "A"

Page No. 51 of 67
Case No. DIR-2022-8663-CDO-HCA

A1.1



BASEMENT FLOOR PLAN
3/32"-1"=0'



1ST FLOOR PLAN
3/32"-1"=0'

GENERAL NOTES

- CONTRACTOR TO VERIFY ALL DETAILS, DIMENSIONS, AND FIELD CONDITIONS BEFORE PROCEEDING WITH CONSTRUCTION.
- WHERE ARCHITECTURAL SPECIFICATIONS REGARDING STRENGTH OF MATERIALS AND STRUCTURAL SPECS ARE NOT IN AGREEMENT, THE STRUCTURAL SPECIFICATIONS WILL APPLY.
- HEIGHT OF TOP OF WALL, ROOF AND PARAPET SHOWN ON ELEV. ARE APPROXIMATE. TAKEN FROM THE BUILDING FINISH FLOOR. EXACT DIM. TO BE DETERMINED PER MANUFACTURER'S REG. AND STANDARD DETAILS.
- ALL NOTES, DIM., DETAIL REFERENCES AND INFO. SHOWN ON THIS SHEET ARE REPEATING OR THE STANDARD 17' ROOF ROCKET FOR SUBSURFACE CHARGES.
- ALL HALLWAYS AT STORAGE AREAS MUST BE 5'-0" CLEAR FROM FINISHED WALL TO FINISHED WALL.
- VERIFY GRADES @ BUILDING LINE WITH CIVIL ENGINEERING DRAWINGS. DO NOT SCALE THE DWGS. NOTIFY ARCHITECT OF ANY DISCREPANCIES IN THE PLANS IMMEDIATELY BEFORE PROCEEDING.
- FOR ALL EXIT SIGNS SEE ELECTRICAL.
- ALL DRYWALL ON INTERIOR SHALL BE TAPED, SMOOTH FINISH AND PAINTED FOR A COMPLETE WORKMANLIKE FINISHED WALL AND CEILING.
- ALL EXPOSED INSTALLATION AT STORAGE AREA (A.H.V.C. DUCTS AND EQUIPMENT, LIGHTS FIXTURES, FIRE SPRINKLERS, ETC.) SHOULD BE SECURED AS CLOSE TO THE UNDERSIDE OF DECK ABOVE AS POSSIBLE UNLESS NOTED OTHERWISE.
- ALL EXTERIOR WALLS TO BE TREATED WITH GRAFFITI RESISTANT OR DETOURING SURFACES SUCH AS SPECIALIZED COATINGS.
- ALL STOREFRONT WINDOWS TO BE COVERED WITH GRAFFITI RESISTANT FILM OR OTHER SPECIALIZED COATINGS.

KEY NOTES

- CONCRETE SLAB ON GRADE PER STRUCTURAL PLANS. SEAL WITH "ASHFORD FORMULAS" SEALER.
- CONCRETE FILL OVER LIGHT GA. METAL DECKING, SEAL WITH "ASHFORD FORMULAS" SEALER.
- ROOF ACCESS HATCH AND LADDER. SEE DETAIL #11A6.30
- ROLL UP DOOR AT STORAGE UNITS. SEE A5.0a DOOR SCHEDULE AND DETAIL #9A6.0a. FOR ACCESSIBLE UNITS SEE DETAIL #1, 2, & 3 / A5.0a
- STOREFRONT SYSTEM. SEE SHEET #A8.1, WINDOW SCHEDULE.
- TACTILE EXIT SIGNAGE MOUNTING HEIGHT: 80" A.F.F. SEE DETAILS #22A7.2, FOR STAIRS EXIT SEE DETAIL 25A7.2
- INTERNATIONAL ACCESSIBILITY SYMBOL AT ALL ACCESSIBLE ENTRANCES. MOUNTING HEIGHT: 67" A.F.F. SEE DETAIL #17.1
- PROVIDE A SEMI-RECESSED FIRE EXTINGUISHER CABINET "UL INDUSTRIES" MODEL #117010 OR APPROVED EQUAL, WITH A 5 L.B. 2A, 10B C CLASS DRY CHEMICAL FIRE EXTINGUISHER, IN ACCORDANCE WITH TITLE 19 TABLE 2 CPC SECTION 904.1 TO NOT EXCEED 75' TRAVEL DISTANCE FROM ANYWHERE IN THE BUILDING AND SHALL BE LOCATED ALONG THE NORMAL PATH OF TRAVEL AND IN READILY VISIBLE AND ACCESSIBLE LOCATION, WITH THE BOTTOM OF THE EXTINGUISHER AT LEAST 4" ABOVE THE FLOOR. VERIFY EXACT LOCATION, SIZE AND QUANTITY WITH FIRE DEPARTMENT PRIOR TO INSTALLATION.
- 18 GA @ HIGH 4" X 4" WHITE METAL CORNER GUARD, TYP. @ ALL OUTSIDE HALLWAY CORNERS.
- PROVIDE 12" KICK PLATE AGAINST WALLS AT CART AREAS FOR PROTECTION.
- PROVIDE 6" HIGH FLUSH METAL PANEL SYSTEM AGAINST STUD WALLS AT HALLWAYS AND COMMON AREAS FOR PROTECTION. GYP. BD. PAINTED ABOVE. BID ALTERNATE 12" HIGH KICKPLATES.
- FIRE RISER ROOM - KNOX KEY BOX WILL BE PROVIDED. SEE DETAIL 13A7.2
- ELEVATOR MECHANICAL ROOM. SEE 1&2 A6.3a
- ELECTRICAL ROOM.
- GALVANIZED METAL INTERNAL DOWNSPOUT AND OVERFLOW, DAYLIGHT 12" O.C. ABOVE F.F. PROVIDE BRONZE NOZZLE. VERIFY SIZE WITH PLUMBING DRAWINGS. SEE DETAIL 3
- ARCHITECTURAL FEATURE ABOVE
- STEEL CANOPY ABOVE, DETAIL #12A7.3
- CLEAN AIR & EV PARKING WITH EV CHARGER (SEE DETAIL #23 & 24 / A7.2).
- DESIGNATED FOR EMPLOYEES ONLY (EXCEPTION: EVCS NOT AVAILABLE TO THE GENERAL PUBLIC AND INTENDED FOR USE BY A DESIGNATED VEHICLE OR DRIVER SHALL NOT BE REQUIRED TO COMPLY WITH SECTION 11B-228.3.2).
- CLEAN AIR PARKING (SEE DETAIL #23 & 24 / A7.2).
- DESIGNATED PARKING SPACE WITH ACCESSIBLE VEHICLES PER CBC SEC. 11B-812.6 & 11B-812.7, PARKING STALL MARKING PER CBC 11B-812.7.
- ACCESSIBLE AND EV PARKING SPACE WITH EV CHARGER. SEE DETAIL #1 / A7.1, #23 & 24 / A7.2
- ACCESSIBLE AND EV PARKING SPACE WITH EV CHARGER. SEE DETAIL #1 / A7.1, #23 & 24 / A7.2
- DETECTABLE WARNING, SEE DETAIL #13A7.1
- DRYWELL AT BASEMENT, (SEE CIVIL PLAN (C-3.00 SHEET))
- WROUGHT IRON FENCING, SEE DETAIL #11A7.2
- STANDPIPE
- PERFORATED METAL ROLL-UP DOOR.
- CLICK ENTER TRANSDUCER LOCATION. ALSO, WITH KNOX KEY BOX
- EXIT KEY PAD. SEE DETAIL #15 / A7.2
- CEILING ABOVE OVER ENTRY - STUCCO OVER 1/2" DENSGLASS WITH AIRWATER BARRIER DETAIL #10A7.2 & #10A7.3 (STUCCO) 100-ESR 1807
- WALL ABOVE BARRIER TO 1/2" DENSGLASS AND CEILING OF EXISTING VEHICLE
- TRANSPORTATION INFORMATION CENTER (TIC) WHERE VISITORS AND EMPLOYEES CAN OBTAIN INFORMATION REGARDING A VARIETY OF LOCAL TRANSPORTATION PLANS AND SERVICES. A TIC PROVIDES INFORMATION ABOUT TRANSIT SCHEDULES, COMMUTE PLANNING, RIDESHARING, TELECOMMUTING, BICYCLE AND PEDESTRIAN ROUTES AND FACILITIES, TAXIS, PARA-TRANSIT, ONSITE SERVICES AND LOCAL BUSINESSES. (SEE SECTION 2.3 C.4)
- SCOFFIT ABOVE

WALL LEGEND

	RETAINING WALL
	CONCRETE MASONRY UNIT WALL
	2HR FIRE RATED - CONCRETE MASONRY UNIT WALL
	8" STEEL STUD WALL BETWEEN DRIVE-UP AND INTERIOR STORAGE INSULATION
	4" INTERIOR STEEL STUD WALL
	4" TYPICAL STORAGE PARTITION
	4" STEEL STUD WITH INSULATION
	2HR STEEL STUD WALL
	2HR STEEL STUD WALL
	FIBERGLASS BATT INSULATION - R-VALUE PER WALL TYPE
	CLIMATE CONTROL AREA - ALL PERIMETER STUD WALLS, COMPOSITE FLOORS, AND ROOF TO BE INSULATED, R-VALUE PER WALL TYPE, SECTIONS, AND ROOF PLAN. EXTENTS OF FLOOR INSULATION ABOVE. SEE DETAIL #19A7.4

EXHIBIT "A"
Page No. 53 of 67
Case No. DIR-2022-8663-CDO-HCA

jordan
architects, inc.

131 Calle Iglesia, Suite 100
San Clemente, CA. 92672-7541

Telephone (949) 388-8090
Facsimile (949) 388-8290

THIS DRAWING AND ITS CONTENTS ARE INSTRUMENTS OF SERVICE AND ARE THE COPYRIGHTED PROPERTY OF BRUCE JORDAN ARCHITECTS. THE USE OF FORMS OR MATERIALS FOR THE PROJECT NOTED BELOW AND NOT BE REVIEWED OR APPROVED BY BRUCE OR IN FACT BEYOND THE WRITTEN PERMISSION OF BRUCE JORDAN ARCHITECT.

"COPYRIGHT" YEAR OF 1ST PUBLICATION
2019 BRUCE JORDAN ARCHITECT



CLIENT
GCX
DEVELOPMENT
LLC

818 WEST 7TH ST.,
SUITE 410
LOS ANGELES
CA

PROJECT

FIGUEROA
SELF STORAGE

3200 NORTH FIGUEROA ST
LOS ANGELES, CA 90065

SHEET TITLE
BASEMENT &
FIRST
FLOOR PLAN

REV.	DATE	COMMENT
20	20/09/2021	1ST PLAN CK SUBMITTAL
21	20/09/2023	RE-SUBMITTAL
22		
23		
24		

PROJECT MANAGER: **Elopez**

PROJECT LEAD: **ESamudio**

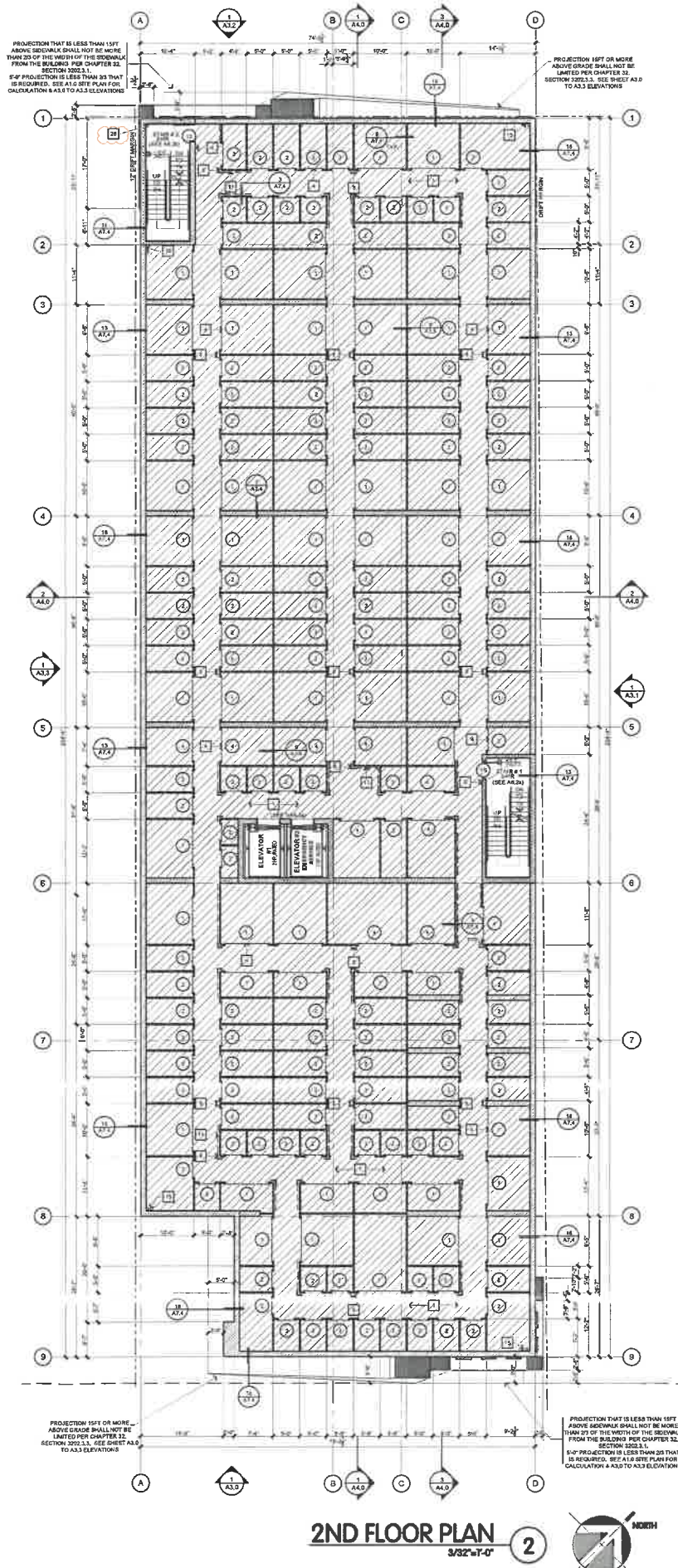
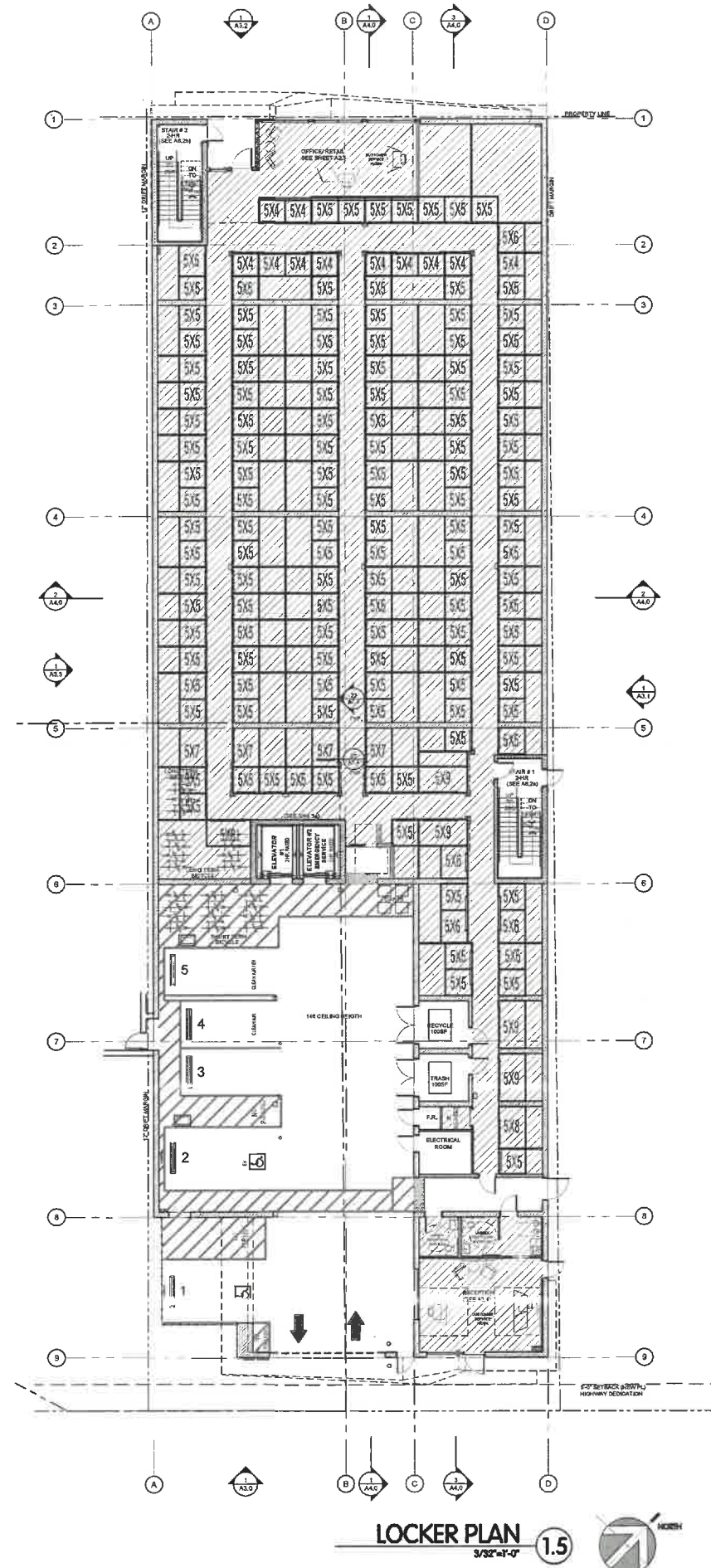
DATE: **08/21/2023**

JOB NUMBER: **19-1212**

FILE NAME: **191212A2.0-Floor Plan**

SHEET NUMBER:

A2.0



GENERAL NOTES

- CONTRACTOR TO VERIFY ALL DETAILS, DIMENSIONS, AND FIELD CONDITIONS BEFORE PROCEEDING WITH CONSTRUCTION.
- WHERE ARCHITECTURAL SPECIFICATIONS REGARDING STRENGTH OF MATERIALS AND STRUCTURAL SPECS ARE NOT IN AGREEMENT, THE STRUCTURAL SPECIFICATIONS WILL APPLY.
- HEIGHT OF TOP OF WALL, ROOF AND PARAPET SHOWN ON ELEV. ARE APPROXIMATE. TAKEN FROM THE BUILDING FINISH FLOOR EXACT DIAL TO BE DETERMINED PER MANUFACTURER'S REQ. AND STANDARD DETAILS.
- ALL NOTES, DIM., DETAIL REFERENCES AND INFO. SHOWN ON THIS SHEET ARE REPEATING AND TYP. FOR ALL FLOOR PLANS AND ELEVATIONS UNLESS ALL HALLWAYS AT STORAGE AREAS MUST BE 5'-0" CLEAR FROM FINISHED WALL TO FINISHED WALL.
- VERIFY GRADER'S BUILDING LINE WITH CIVIL ENGINEERING DRAWINGS.
- DO NOT SCALE THE DWGS. NOTIFY ARCHITECT OF ANY DISCREPANCIES IN THE PLANS IMMEDIATELY BEFORE PROCEEDING.
- FOR ALL EXIT SIGNS SEE ELECTRICAL.
- ALL DRYWALL ON INTERIOR SHALL BE TAPE, SMOOTH FINISH AND PAINTED FOR A COMPLETE WORKMANLIKE FINISHED WALL AND CEILING.
- ALL EXPOSED INSTALLATION AT STORAGE AREA (i.e. HVAC DUCTS AND EQUIPMENT, LIGHTS FIXTURES, FIRE SPRINKLERS, ETC.) SHOULD BE SECURED AS CLOSE TO THE UNDERSIDE OF DECK ABOVE AS POSSIBLE UNLESS NOTED OTHERWISE.
- ALL EXTERIOR WALLS TO BE TREATED WITH GRAFFITI RESISTANT OR DETOURING SURFACES SUCH AS SPECIALIZED COATINGS.
- ALL STOREFRONT WINDOWS TO BE COVERED WITH GRAFFITI RESISTANT FILM OR OTHER SPECIALIZED COATINGS.

KEY NOTES

- CONCRETE SLAB ON GRADE PER STRUCTURAL PLANS. SEAL WITH "ASHFORD FORMULA" SEALER.
- CONCRETE FILL OVER LIGHT GA. METAL DECKING. SEAL WITH "ASHFORD FORMULA" SEALER.
- ROOF ACCESS HATCH AND LADDER. SEE DETAIL #11/A6.2b.
- ROLL UP DOOR AT STORAGE UNITS. SEE AREA DOOR SCHEDULE AND DETAIL #10/A6.04. FOR ACCESSIBLE UNITS SEE DETAIL #1.2 & 3 / A6.04.
- STOREFRONT SYSTEM. SEE SHEET #A6.1, WINDOW SCHEDULE.
- TACTILE EXIT SIGNAGE MOUNTING HEIGHT: 60" A.F.F. SEE DETAILS #22/A7.2 FOR STAIRS EXIT SEE DETAIL 25/A7.2.
- INTERNATIONAL ACCESSIBILITY SYMBOL AT ALL ACCESSIBLE ENTRANCES. MOUNTING HEIGHT: 67" A.F.F. SEE DETAIL #14/A7.1.
- PROVIDE A SEMI-RECESSED FIRE EXTINGUISHER CABINET "UL INDUSTRIES" MODEL 8117G10 OR APPROVED EQUAL, WITH A 5 LB. 2A:10B C CLASS DRY CHEMICAL FIRE EXTINGUISHER, IN ACCORDANCE WITH TABLE 19 TABLE 2 CFC SECTION 904.1. TO NOT EXCEED 75' TRAVEL DISTANCE FROM ANYWHERE IN THE BUILDING AND SHALL BE LOCATED ALONG THE NORMAL PATH OF TRAVEL AND IN READILY VISIBLE AND ACCESSIBLE LOCATION, WITH THE BOTTOM OF THE EXTINGUISHER AT LEAST 4" ABOVE THE FLOOR. VERIFY EXACT LOCATION, SIZE AND QUANTITY WITH FIRE DEPARTMENT PRIOR TO INSTALLATION.
- 18 GA #4 HIGH 4" X 4" WHITE METAL CORNER GUARD, TYP. @ ALL OUTSIDE HALLWAY CORNERS.
- PROVIDE 12" KICK PLATE AGAINST WALLS AT CART AREAS FOR PROTECTION.
- PROVIDE 8" HIGH FLUSH METAL PANEL SYSTEM AGAINST STUD WALLS AT HALLWAYS AND COMMON AREAS FOR PROTECTION. CYP. SD. PAINTED ABOVE. BID ALTERNATE 12" HIGH KICKPLATES.
- FIRE RISER ROOM - KNOX KEY BOX WILL BE PROVIDED. SEE DETAIL 13/A7.2.
- ELEVATOR MECHANICAL ROOM. SEE 1&2 A6.3a.
- ELECTRICAL ROOM.
- GALVANIZED METAL INTERNAL DOWNSPOUT AND OVERFLOW. DAYLIGHT 12" O.C. ABOVE F.F. PROVIDE BRONZE NOZZLE. VERIFY SIZE WITH PLUMBING DRAWINGS. SEE #20/A7.3.
- ARCHITECTURAL FEATURE ABOVE.
- STEEL CANOPY ABOVE. DETAIL #13/A7.3.
- CLEAN AIR & EV PARKING WITH EV CHARGER (SEE DETAIL #23 & 24 / A7.2). DESIGNATED FOR EMPLOYEES ONLY. EMPLOYEES NOT AVAILABLE TO THE GENERAL PUBLIC AND INTENDED FOR USE BY A DESIGNATED VEHICLE OR DRIVER SHALL NOT BE REQUIRED TO COMPLY WITH SECTION 11B-029.2.2.
- CLEAN AIR PARKING (SEE DETAIL #22 & 24 / A7.2).
- DESIGNATED PARKING SPACE 1 VAN ACCESSIBLE VEHICLES PER CBC SEC. 11B-012.6 & 11B-012.7. PARKING STALL MARKING PER CBC 11B-012.7.
- ACCESSIBLE AND EV PARKING SPACE WITH EV CHARGER. SEE DETAIL #1 / A7.1, #23 & 24 / A7.2.
- ACCESSIBLE AND EV PARKING SPACE WITH EV CHARGER. SEE DETAIL #1 / A7.1, #23 & 24 / A7.2.
- DETECTABLE WARNING. SEE DETAIL #13/A7.1.
- DRYWELL AT BASEMENT. (SEE CIVIL PLAN (3-00 SHEET))
- WROUGHT IRON FENCING. SEE DETAIL #11/A7.2.
- STANDPIPE.
- PERFORATED METAL ROLL-UP DOOR.
- CLICK ENTER TRANSPONDER LOCATION. ALSO, WITH KNOX KEY BOX.
- EXIT KEY PAD. SEE DETAIL #15 / A7.2.
- CEILING ABOVE OVER ENTRY - STUCCO OVER 3/4" DENSGLASS WITH AIRWATER BARRIER DETAIL #10/A7.3. 1.5" X 3" STUCCO 120-C584 1807.
- VISUAL/AUDIBLE ALARM TO WARN PEDESTRIANS AND CYCLIST OF EXITING VEHICLE.
- TRANSPORTATION INFORMATION CENTER (TIC) WHERE VISITORS AND EMPLOYEES CAN OBTAIN INFORMATION REGARDING A VARIETY OF LOCAL TRANSPORTATION PLANS AND SERVICES. A TIC PROVIDES INFORMATION ABOUT TRAVEL SCHEDULES, COMMUTE PLANNING, RIDES-HARING, TELECOMMUTING, BICYCLE AND PEDESTRIAN ROUTES AND FACILITIES, TAXI, PARA-TRANSIT, ON-SITE SERVICES AND LOCAL BUSINESSES. (SEE SECTION 9.3 (2))
- SOFFIT ABOVE.

WALL LEGEND

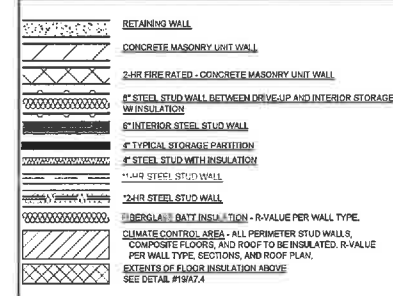


EXHIBIT "A"
Page No. 54 of 67
Case No. DIR-2022-8663-CDO-HCA

jordan architects, inc.

131 Calle Iglesia, Suite 100
San Clemente, CA. 92672-7541

Telephone (949) 388-8090
Facsimile (949) 388-8290

THIS DRAWING AND ITS CONTENTS ARE INSTRUMENTS OF SERVICE AND ARE THE COPYRIGHTED PROPERTY OF BRUCE JORDAN ARCHITECTS, INC. NO PART OF THIS DRAWING OR THE PROJECT NOTED BELOW AND ANY PART BEING REPRODUCED OR TRANSMITTED IN ANY FORM OR BY ANY MEANS WITHOUT THE WRITTEN PERMISSION OF BRUCE JORDAN ARCHITECTS, INC.

"COPYRIGHT" YEAR OF 1ST PUBLICATION
2019 BRUCE JORDAN ARCHITECT



CLIENT
GCX DEVELOPMENT LLC

818 WEST 7TH ST.,
SUITE 410
LOS ANGELES
CA

PROJECT
FIGUEROA SELF STORAGE

3200 NORTH FIGUEROA ST
LOS ANGELES, CA 90065

SHEET TITLE
LOCKER & SECOND FLOOR PLAN

REV.	DATE	COMMENT
01	08/20/2021	1ST PLAN CK SUBMITTAL
02	03/10/2023	RE-SUBMITTAL

PROJECT MANAGER: Elopez
PROJECT LEAD: ESamudio

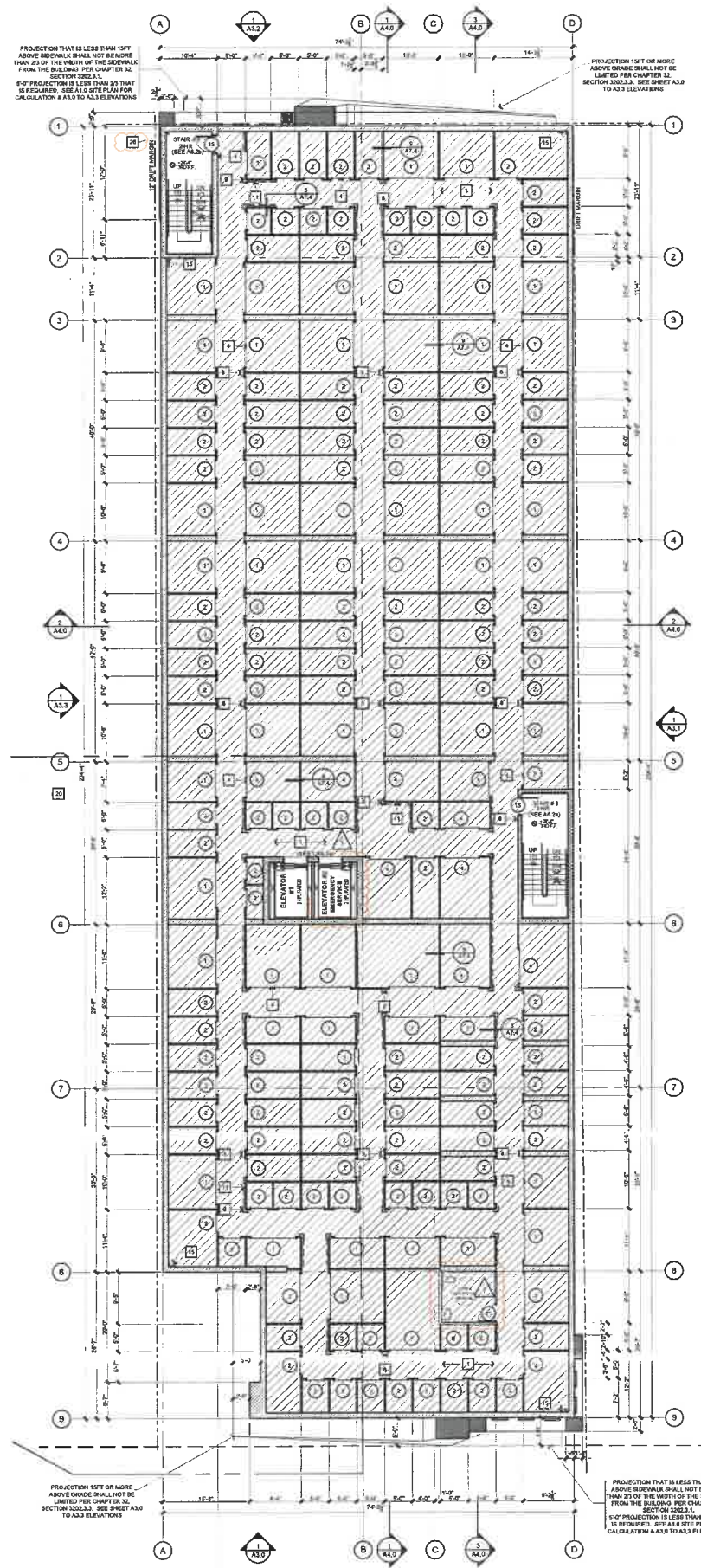
DATE: 08/21/2023

JOB NUMBER: 19-1212

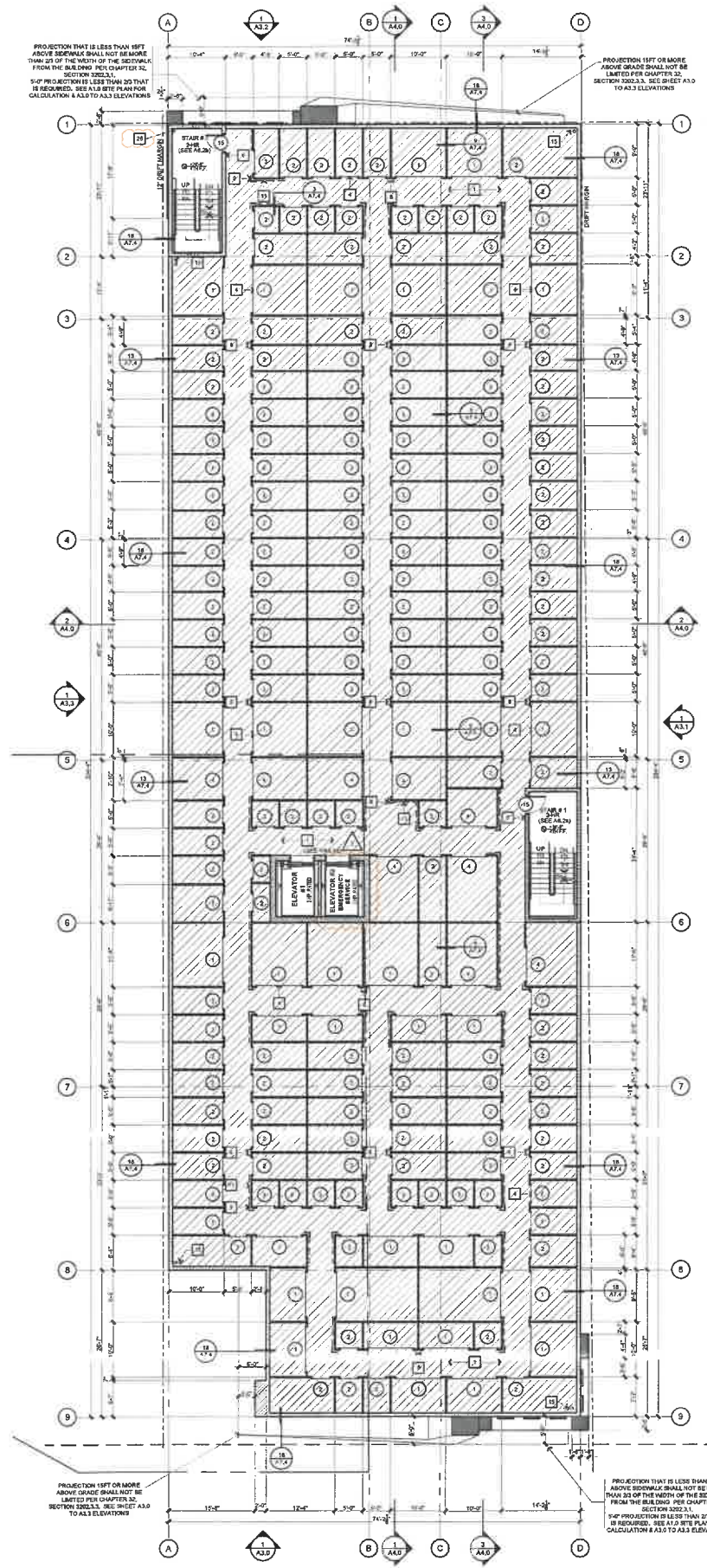
FILE NAME: 191212A2.0-Floor Plan

SHEET NUMBER:

A2.1



3RD FLOOR PLAN
3/32'-1/4" 3



4TH FLOOR PLAN
3/32'-1/4" 4

GENERAL NOTES

1. CONTRACTOR TO VERIFY ALL DETAILS, DIMENSIONS, AND FIELD CONDITIONS BEFORE PROCEEDING WITH CONSTRUCTION.
2. WHERE ARCHITECTURAL SPECIFICATIONS REGARDING STRENGTH OF MATERIALS AND STRUCTURAL SPECIFICATIONS ARE NOT IN AGREEMENT, THE STRUCTURAL SPECIFICATIONS WILL APPLY.
3. HEIGHT OF TOP OF WALL, ROOF AND PARAPET SHOWN ON ELEV. ARE APPROXIMATE. TAKEN FROM THE BUILDING FINISH FLOOR. EXACT DIM. TO BE DETERMINED PER MANUFACTURER'S REQ. AND STANDARD DETAILS.
4. ALL NOTES, DIM., DETAIL REFERENCES AND INFO. SHOWN ON THIS SHEET ARE REPEATING AND TYP. FOR ALL FLOOR PLANS AND ELEVATIONS UNLESS NOTED OTHERWISE.
5. ALL HALLWAYS AT STORAGE AREAS MUST BE 5'-0" CLEAR FROM FINISHED WALL TO FINISHED WALL.
6. VERIFY GRADES & BUILDING LINE WITH CIVIL ENGINEERING DRAWINGS.
7. DO NOT SCALE THE DIMS. NOTIFY ARCHITECT OF ANY DISCREPANCIES IN THE PLANS IMMEDIATELY BEFORE PROCEEDING.
8. FOR ALL EXIT SIGNS SEE ELECTRICAL.
9. ALL DRYWALL ON INTERIOR SHALL BE TAPE, SMOOTH FINISH AND PAINTED FOR A COMPLETE WORKMANLIKE FINISHED WALL AND CEILING.
10. ALL EXPOSED INSTALLATION AT STORAGE AREA (i.e. HVAC DUCTS AND EQUIPMENT, LIGHTS, FIXTURES, FIRE SPRINKLERS, ETC.) SHOULD BE SECURED AS CLOSE TO THE UNDERSIDE OF DECK ABOVE AS POSSIBLE UNLESS NOTED OTHERWISE.
11. ALL EXTERIOR WALLS TO BE TREATED WITH GRAFFITI RESISTANT OR DETOURING SURFACES SUCH AS SPECIALIZED COATINGS.
12. ALL STOREFRONT WINDOWS TO BE COVERED WITH GRAFFITI RESISTANT FILM OR OTHER SPECIALIZED COATINGS.

KEY NOTES

1. CONCRETE SLAB ON GRADE PER STRUCTURAL PLANS. SEAL WITH "ASH-FORD FORMULA" SEALER.
2. CONCRETE FILL OVER LIGHT GA. METAL DECKING. SEAL WITH "ASH-FORD FORMULA" SEALER.
3. ROOF ACCESS HATCH AND LADDER. SEE DETAIL #11A5.3b
4. ROLL-UP DOOR AT STORAGE UNITS. SEE AS.0a DOOR SCHEDULE AND DETAIL #1A6.0a. FOR ACCESSIBLE UNITS SEE DETAIL #1, 2, & 3 / A6.0a
5. STOREFRONT SYSTEM. SEE SHEET #A6.1, WINDOW SCHEDULE.
6. TACTILE EXIT SIGNAGE MOUNTING HEIGHT: 60" A.F.F. SEE DETAILS #22A7.2. FOR STAIRS EXIT SEE DETAIL 25A7.2
7. INTERNATIONAL ACCESSIBILITY SYMBOL AT ALL ACCESSIBLE ENTRANCES. MOUNTING HEIGHT: 60" A.F.F. SEE DETAIL #11A7.1
8. PROVIDE A REAR-RECESSED FIRE EXTINGUISHER CABINET "UL INDUSTRIES" MODEL 9117G10 OR APPROVED EQUAL. WITH A 5 LB. 2A:10B CLASS DRY CHEMICAL FIRE EXTINGUISHER. IN ACCORDANCE WITH TITLE 19 TABLE 2 CFC SECTION 906.3. TO NOT EXCEED 70' TRAVEL DISTANCE FROM ANYWHERE IN THE BUILDING AND SHALL BE LOCATED ALONG THE NORMAL PATH OF TRAVEL AND IN READILY VISIBLE AND ACCESSIBLE LOCATION. WITH THE BOTTOM OF THE EXTINGUISHER AT LEAST 4" ABOVE THE FLOOR. VERIFY EXACT LOCATION, SIZE AND QUANTITY WITH FIRE DEPARTMENT PRIOR TO INSTALLATION.
9. 18 GA. 6" HIGH 4" X 4" WHITE METAL CORNER GUARD. TYP. @ ALL OUTSIDE HALLWAY CORNERS.
10. PROVIDE 12" KICK PLATE AGAINST WALLS AT CHART AREAS FOR PROTECTION.
11. PROVIDE 60" HIGH FLUSH METAL PANEL SYSTEM AGAINST STUD WALLS AT HALLWAYS AND COMMON AREAS FOR PROTECTION. GYP. BO. PAINTED ABOVE. BID ALTERNATE 12" HIGH KICKPLATES.
12. FIRE RISER ROOM - KNOX KEY BOX WILL BE PROVIDED. SEE DETAIL 13A7.2
13. ELEVATOR MECHANICAL ROOM. SEE 152 A6.3a
14. ELECTRICAL ROOM.
15. GALVANIZED METAL INTERNAL DOWNSPOUT AND OVERFLOW. DAYLIGHT 12" O.C. ABOVE F.F. PROVIDE BRONZE NOZZLE. VERIFY SIZE WITH PLUMBING DRAWINGS. SEE #25A7.3
16. ARCHITECTURAL FEATURE ABOVE
17. STEEL CANOPY ABOVE. DETAIL #12A7.3
18. CLEAN AIR & EV PARKING WITH EV CHARGER (SEE DETAIL #23 & 24 / A7.2). DESIGNATED FOR EMPLOYEES ONLY (EXCEPTION: EVCS NOT AVAILABLE TO THE GENERAL PUBLIC AND INTENDED FOR USE BY A DESIGNATED VEHICLE OR DRIVER SHALL NOT BE REQUIRED TO COMPLY WITH SECTION 11B-228.3.3).
19. CLEAN AIR PARKING (SEE DETAIL #23 & 24 / A7.2).
20. DESIGNATED PARKING SPACE VAN ACCESSIBLE VEHICLES PER CBC SEC. 11B-412.2 & 11B-412.7. PARKING STALL MARKING PER CBC 11B-412.7.
21. ACCESSIBLE AND EV PARKING SPACE WITH EV CHARGER. SEE DETAIL #1 / A7.1, #23 & 24 / A7.2
22. ACCESSIBLE AND EV PARKING SPACE WITH EV CHARGER. SEE DETAIL #1 / A7.1, #23 & 24 / A7.2
23. DETECTABLE WARNING. SEE DETAIL #13A7.1
24. DRYWELL AT BASEMENT. SEE CIVIL PLAN (C-3.00 SHEET)
25. WROUGHT IRON FENCING. SEE DETAIL #11A7.2
26. STANDPIPE
27. PERFORATED METAL ROLL-UP DOOR.
28. CLICK ENTER TRANSDUCER LOCATION. ALSO, WITH KNOX KEY BOX
29. EXIT KEY PAD. SEE DETAIL #15 / A7.2
30. CEILING ABOVE OVER ENTRY - STUCCO OVER 1/2" DENSGLASS WITH AIRWATER BARRIER DETAIL #12A7.3 & 16A7.3 (STUCCO - RCC-ESP-160)
31. VISUAL/AUDIBLE ALARM TO WARN PEDESTRIANS AND CYCLIST OF EXITING VEHICLE
32. TRANSPORTATION INFORMATION CENTER (TIC) WHERE VISITORS AND EMPLOYEES CAN OBTAIN INFORMATION REGARDING A VARIETY OF LOCAL TRANSPORTATION PLANS AND SERVICES. A TIC PROVIDES INFORMATION ABOUT TRANSIT SCHEDULES, COMMUTE PLANNING, RIDE SHARING, TELECOMMUTING, BICYCLE AND PEDESTRIAN ROUTES AND FACILITIES, TAXI, PARKING, TRANSIT, ON-SITE SERVICES AND LOCAL BUSINESSES. (SEE SECTION 2.3.C.2)
33. SOFFIT ABOVE

WALL LEGEND

	RETAINING WALL
	CONCRETE MASONRY UNIT WALL
	2HR FIRE RATED - CONCRETE MASONRY UNIT WALL
	6" STEEL STUD WALL BETWEEN DRIVE-UP AND INTERIOR STORAGE w/ INSULATION
	6" INTERIOR STEEL STUD WALL
	4" x 8" STORAGE PARTITION
	4" STEEL STUD WITH INSULATION
	1.5HR STEEL STUD WALL
	2HR STEEL STUD WALL
	FIBERGLASS BATT INSULATION - R-VALUE PER WALL TYPE
	CLIMATE CONTROL AREA - ALL PERIMETER STUD WALLS, COMPOSITE FLOORS, AND ROOF TO BE INSULATED. R-VALUE PER WALL TYPE, SECTIONS, AND ROOF PLAN. EXTENTS OF FLOOR INSULATION ABOVE SEE DETAIL #19A7.4

EXHIBIT "A"
Page No. 55 of 67
Case No. DIR-2022-8663-CDO-HCA

jordan
architects, inc.

131 Calle Iglesia, Suite 100
San Clemente, CA. 92672-7541

Telephone (949) 388-8090
Facsimile (949) 388-8290

THIS DRAWING AND ITS CONTENTS ARE INSTRUMENTS OF SERVICE AND ARE THE PROPRIETARY PROPERTY OF BRUCE JORDAN ARCHITECT. THE USE IS EXPRESSLY RESTRICTED FOR THE PROJECT AND SITE SPECIFICALLY IDENTIFIED ON THIS DRAWING. ANY REPRODUCTION OR TRANSMISSION OF THIS DRAWING WITHOUT THE WRITTEN PERMISSION OF BRUCE JORDAN ARCHITECT.

"COPYRIGHT" YEAR OF 1ST PUBLICATION
2019 BRUCE JORDAN ARCHITECT



CLIENT

GCX
DEVELOPMENT
LLC

818 WEST 7TH ST.,
SUITE 410
LOS ANGELES
CA

PROJECT

FIGUEROA
SELF STORAGE

3200 NORTH FIGUEROA ST
LOS ANGELES, CA 90065

SHEET TITLE

**THIRD &
FOURTH
FLOOR PLAN**

REV.	DATE	COMMENT
1	10/26/2021	1ST PLAN CK SUBMITTAL
2	2/10/2023	RS - SUBMITTAL

PROJECT MANAGER: Elopez
PROJECT LEAD: ESamudio

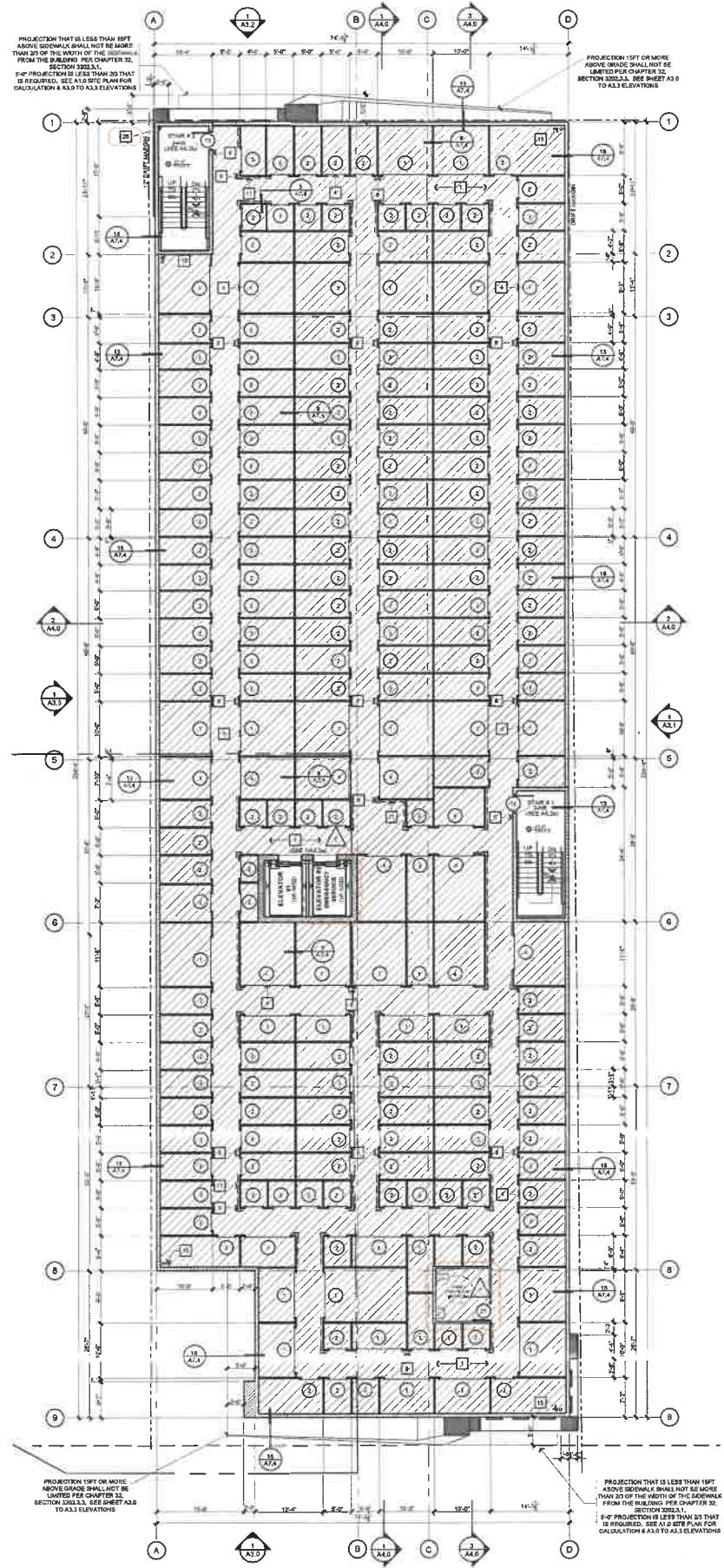
DATE: 08/21/2023

JOB NUMBER: 19-1212

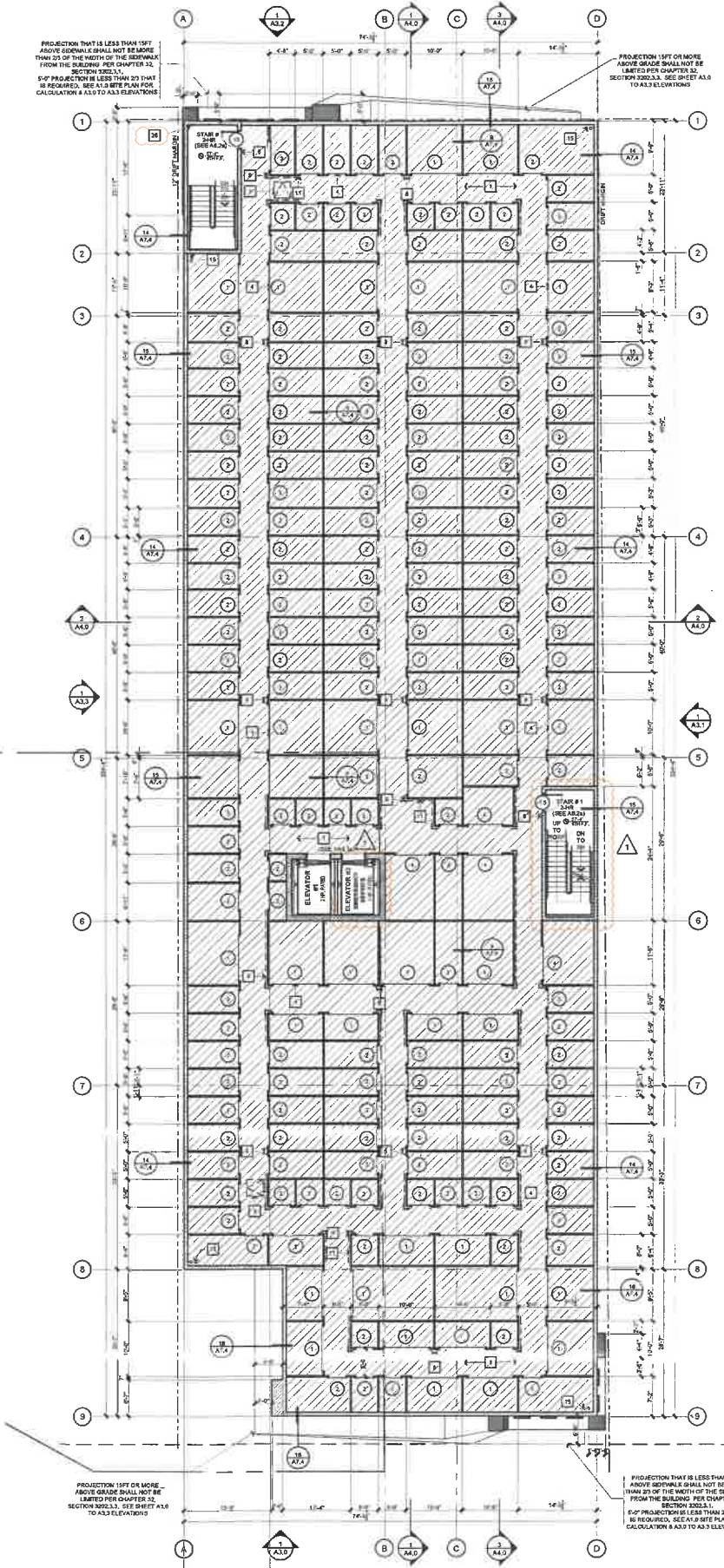
FILE NAME: 191212A2.0-Floor Plan

SHEET NUMBER:

A2.2



5TH FLOOR PLAN
3/22/17 5



6TH FLOOR PLAN
3/22/17 6

GENERAL NOTES

- CONTRACTOR TO VERIFY ALL DETAILS, DIMENSIONS, AND FIELD CONDITIONS BEFORE PROCEEDING WITH CONSTRUCTION.
- WHERE ARCHITECTURAL SPECIFICATIONS REGARDING STRENGTH OF MATERIALS AND STRUCTURAL SPECS ARE NOT IN AGREEMENT, THE STRUCTURAL SPECS WILL APPLY.
- HEIGHT OF TOP OF WALL, ROOF AND PARAPET SHOWN ON ELEV. ARE APPROXIMATE. TAKEN FROM THE BUILDING FINISH FLOOR EXACT DIM. TO BE DETERMINED PER MANUFACTURER'S REQ. AND STANDARD DETAILS.
- ALL NOTES, DIM. DETAIL REFERENCES AND INFO. SHOWN ON THIS SHEET ARE REPEATING AND TYP. FOR ALL FLOOR PLANS AND ELEVATIONS UNLESS NOTED OTHERWISE.
- ALL HALLWAYS AT STORAGE AREAS MUST BE 5'-0" CLEAR FROM FINISHED WALL TO FINISHED WALL.
- VERIFY GRADES @ BUILDING LINE WITH CIVIL ENGINEERING DRAWINGS.
- DO NOT SCALE THE DWGS. NOTIFY ARCHITECT OF ANY DISCREPANCIES IN THE PLANS IMMEDIATELY BEFORE PROCEEDING.
- FOR ALL EXIT SIGNS SEE ELECTRICAL.
- ALL DRYWALL ON INTERIOR SHALL BE TAPED, SMOOTH FINISH AND PAINTED FOR A COMPLETE WORKMANLIKE FINISHED WALL AND CEILING.
- ALL EXPOSED INSTALLATION AT STORAGE AREA (E.G. HVAC DUCTS AND EQUIPMENT, LIGHTS FIXTURES, FIRE SPRINKLERS, ETC.) SHOULD BE SECURED AS CLOSE TO THE UNDERSIDE OF DECK AS POSSIBLE UNLESS NOTED OTHERWISE.
- ALL EXTERIOR WALLS TO BE TREATED WITH GRAFFITI RESISTANT OR DETOURING SURFACES SUCH AS SPECIALIZED COATINGS.
- ALL STOREFRONT WINDOWS TO BE COVERED WITH GRAFFITI RESISTANT FILM OR OTHER SPECIALIZED COATINGS.

KEY NOTES

- CONCRETE SLAB ON GRADE PER STRUCTURAL PLANS. SEAL WITH "ASHFORD FORMULA" SEALER.
- CONCRETE FILL OVER LIGHT GA. METAL DECKING. SEAL WITH "ASHFORD FORMULA" SEALER.
- ROOF ACCESS HATCH AND LADDER. SEE DETAIL #11A/3.3b
- ROLL UP DOOR AT STORAGE UNITS. SEE A6.0a DOOR SCHEDULE AND DETAIL #9A/6.0a. FOR ACCESSIBLE UNITS SEE DETAIL #1, 2, & 3 / A6.0a
- STOREFRONT SYSTEM. SEE SHEET #A6.1, WINDOW SCHEDULE.
- TACTILE EXIT SIGNAGE MOUNTING HEIGHT: 60" A.F.F. SEE DETAILS #22A/7.2, FOR STAIRS EXIT SEE DETAIL 25A/7.2
- INTERNATIONAL ACCESSIBILITY SYMBOL AT ALL ACCESSIBLE ENTRANCES. MOUNTING HEIGHT: 67" A.F.F. SEE DETAIL #18A/7.1
- PROVIDE A SEMI-RECESSED FIRE EXTINGUISHER CABINET "UL INDUSTRIES" MODEL #111710 OR APPROVED EQUAL, WITH A 5 LB. 2A-10B C CLASS DRY CHEMICAL FIRE EXTINGUISHER, IN ACCORDANCE WITH TITLE 19 TABLE 2.0 C SECTION 500.1. TO NOT EXCEED 17' TRAVEL DISTANCE FROM ANYWHERE IN THE BUILDING AND SHALL BE LOCATED ALONG THE NORMAL PATH OF TRAVEL AND IN READILY VISIBLE AND ACCESSIBLE LOCATION, WITH THE BOTTOM OF THE EXTINGUISHER AT LEAST 4" ABOVE THE FLOOR. VERIFY EXACT LOCATION, SIZE AND QUANTITY WITH FIRE DEPARTMENT PRIOR TO INSTALLATION.
- 18 GA 6" HIGH 4" X 4" WHITE METAL CORNER GUARD, TYP. @ ALL OUTSIDE HALLWAY CORNERS.
- PROVIDE 12" KICK PLATE AGAINST WALLS AT CART AREAS FOR PROTECTION.
- PROVIDE 9" HIGH FLUSH METAL PANEL SYSTEM AGAINST STUD WALLS AT HALLWAYS AND COMMON AREAS FOR PROTECTION. GYP. SO. PAINTED ABOVE. BID ALTERNATE 12" HIGH KICKPLATES.
- FIRE RISER ROOM - KNOX KEY BOX WILL BE PROVIDED. SEE DETAIL 13A/7.2
- ELEVATOR MECHANICAL ROOM. SEE 162 A8.3a
- ELECTRICAL ROOM.
- GALVANIZED METAL INTERNAL DOWNSPOUT AND OVERFLOW, DAYLIGHT 12" O.C. ABOVE F.F. PROVIDE BRONZE NOZZLE. VERIFY SIZE WITH PLUMBING DRAWINGS. SEE DETAIL #13A/7.2
- ARCHITECTURAL FEATURE ABOVE
- STEEL CANOPY ABOVE. DETAIL #12A/7.3
- CLEAN AIR & EV PARKING WITH EV CHARGER (SEE DETAIL #23 & 24 / A7.2). DESIGNATED FOR EMPLOYEES ONLY (EXCEPTION: EVCS NOT AVAILABLE TO THE GENERAL PUBLIC AND INTENDED FOR USE BY A DESIGNATED VEHICLE OR DRIVER SHALL NOT BE REQUIRED TO COMPLY WITH SECTION 119-228.3.2).
- CLEAN AIR PARKING (SEE DETAIL #23 & 24 / A7.2).
- DESIGNATED PARKING SPACE VAN ACCESSIBLE VEHICLES PER CBC SEC. 119-812.6 & 119-812.7, PARKING STALL MARKING PER CBC 119-812.7.
- ACCESSIBLE AND EV PARKING SPACE WITH EV CHARGER. SEE DETAIL #1 / A7.1, #23 & 24 / A7.2.
- ACCESSIBLE AND EV PARKING SPACE WITH EV CHARGER. SEE DETAIL #1 / A7.1, #23 & 24 / A7.2.
- DETECTABLE WARNING. SEE DETAIL #13A/7.1
- DRYWELL AT BASEMENT. SEE CIVIL PLAN (C-3.0 SHEET)
- WROUGHT IRON FENCING. SEE DETAIL #11A/7.2
- STAIRPIPE
- PERFORATED METAL ROLL-UP DOOR.
- CLICK2 ENTER TRANSDUCER LOCATION. ALSO, WITH KNOX KEY BOX
- EXIT KEY PAD. SEE DETAIL #15 / A7.2
- CEILING ABOVE COVER ENTRY - STUCCO COVER 3/8" DENGLASS WITH ARMWATER BARRIER DETAIL #24A/7.1 & #24A/7.2 (BUT OCC. 100-258.1907)
- VISUAL/AUDIBLE ALARM TO WARN PEDESTRIANS AND CYCLIST OF EXITING VEHICLE
- TRANSPORTATION INFORMATION CENTER (TIC) WHERE VISITORS AND EMPLOYEES CAN OBTAIN INFORMATION REGARDING A VARIETY OF LOCAL TRANSPORTATION PLANS AND SERVICES. A TIC PROVIDES INFORMATION ABOUT TRAVEL SCHEDULES, COMMUTE PLANNING, RIDE-SHARING, TELECOM MUTING, BICYCLE AND PEDESTRIAN ROUTES AND FACILITIES, TAXIS, PARA-TRANSIT, ON-SITE SERVICES AND LOCAL BUSINESSES. (SEE SECTION 2.3.C.2)
- SOFFIT ABOVE

WALL LEGEND

	RETAINING WALL
	CONCRETE MASONRY UNIT WALL
	2HR FIRE RATED - CONCRETE MASONRY UNIT WALL
	8" STEEL STUD WALL BETWEEN DRIVE-UP AND INTERIOR STORAGE W/ INSULATION
	6" INTERIOR STEEL STUD WALL
	4" TYPICAL STORAGE PARTITION
	4" STEEL STUD WITH INSULATION
	1HR STEEL STUD WALL
	2HR STEEL STUD WALL
	FIBERGLASS BATT INSULATION - R-VALUE PER WALL TYPE
	CLIMATE CONTROL AREA - ALL PERIMETER STUD WALLS, COMPOSITE FLOORS, AND ROOF TO BE INSULATED. R-VALUE PER WALL TYPE, SECTIONS, AND ROOF PLAN. EXTENTS OF FLOOR INSULATION ABOVE. SEE DETAIL #18A/7.4

EXHIBIT "A"
Page No. 56 of 67
Case No. DIR-2022-8663-CDO-HCA

jordan architects, inc.

131 Calle Iglesia, Suite 100
San Clemente, CA 92672-7541

Telephone (949) 388-8090
Facsimile (949) 388-8290

THIS DRAWING AND ITS CONTENTS ARE THE PROPERTY OF JORDAN ARCHITECTS, INC. AND ARE TO BE USED ONLY FOR THE PROJECT AND SITE SPECIFICALLY IDENTIFIED HEREON. NO PART OF THIS DRAWING IS TO BE REPRODUCED IN ANY MANNER WITHOUT THE WRITTEN PERMISSION OF BRUCE JORDAN ARCHITECT.

"COPYRIGHT" YEAR OF 1ST PUBLICATION
2019 BRUCE JORDAN ARCHITECT



CLIENT
GCX DEVELOPMENT LLC

818 WEST 7TH ST.,
SUITE 410
LOS ANGELES CA

PROJECT

FIGUEROA SELF STORAGE

3200 NORTH FIGUEROA ST
LOS ANGELES, CA 90065

SHEET TITLE

FIFTH & SIXTH FLOOR PLAN

REV.	DATE	COMMENT
	08/22/2021	1ST PLAN CK SUBMITTAL
△	12/10/2023	RE-SUBMITTAL
△		
△		

PROJECT MANAGER: Elopez
PROJECT LEAD: ESamudio

DATE: 08/21/2023

JOB NUMBER: 19-1212

FILE NAME: 191212A2.0-Floor Plan

SHEET NUMBER:

A2.3