

# SIGN SPECIFICATIONS 12121 (BUILDING 1)–NON ILLUMINATED SINGLE FACE MONUMENT SIGN




**Location:** 12121 Bluff Creek Dr  
Playa Vista, California 90094

**Sq. Ft.** 48 ft<sup>2</sup>

**Non-illuminated monument sign**

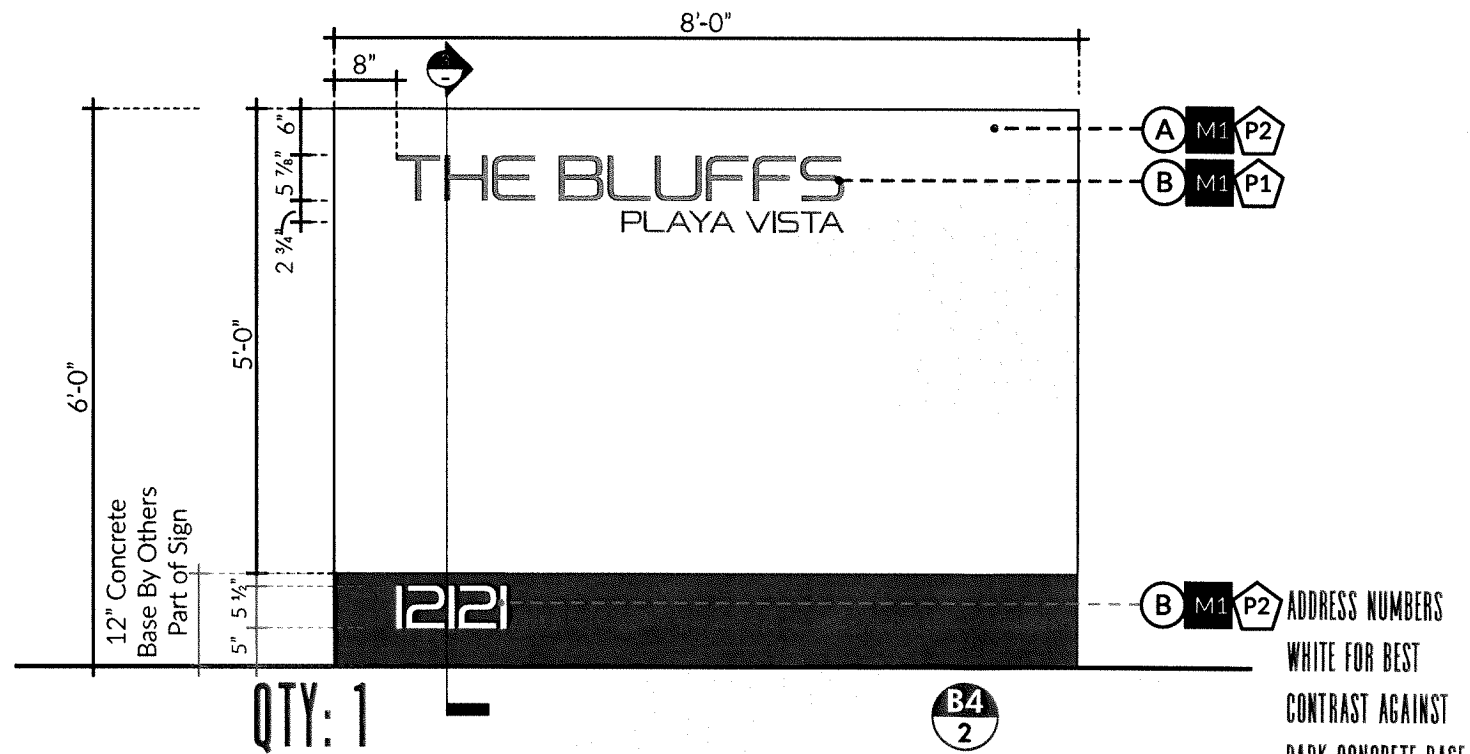
- (A)** 1 1/2" x 1 1/2" x 3/16" thick Aluminum angle Frame. 12" Deep, .090" Aluminum Skin face & returns Painted P2 Matthews Satin "Natural White"
- (B)** FCO: 3/8" Thick aluminum painted P1 Matthews Satin to match "Champagne 70% Kynar" fastened from backside of cabinet face with #8-32 SS countersunk screws
- (C)** Monument sign Saddle mount to existing post on existing concrete.
- (D)** Address Numbers: FCO 3/8" thick aluminum Painted P2 Matthews Satin "Natural White" Flush mounted existing concrete base with #10-24" x 2" long SS threaded studs

**MATERIAL/FINISH SCHEDULE**

<b>(M1)</b>	5052 Alloy H32		0.090" Mill Aluminum
<b>(P1)</b>	MP Custom Mix		Matthews Paint To Match Champagne 70% Kynar
<b>(P2)</b>	11477		Matthews Paint "Natural White"

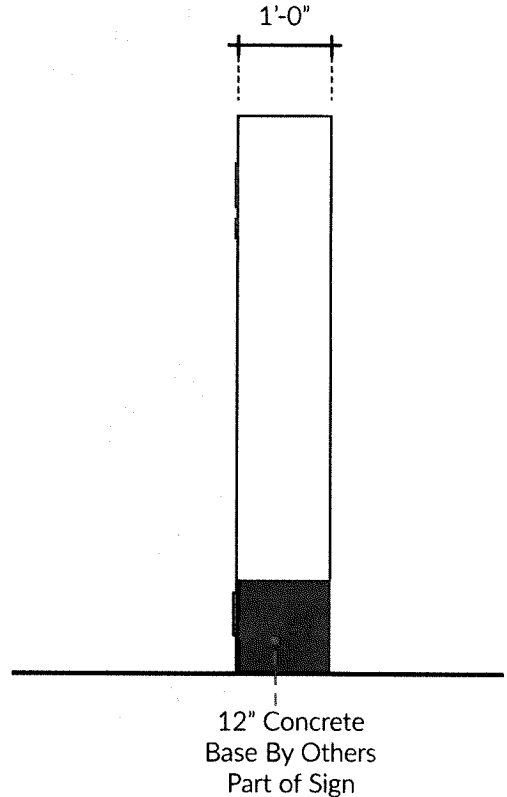
**EXHIBIT "A"**  
Page No. 10 of 12  
Case No. DIR-2021-7296-SPP

**1 Sign Fabrication Detail  
Plan View  
SCALE  
1/2" = 1'-0"**



**2 Sign Fabrication Detail  
Elevation View  
SCALE  
1/2" = 1'-0"**

**3 Method of Attachment Detail  
Section View  
SCALE  
1/2" = 1'-0"**



# SIGN SPECIFICATIONS 12181 (BUILDING 2)–NON ILLUMINATED SINGLE FACE MONUMENT SIGN

Location: 12181 Bluff Creek Dr  
Playa Vista, California 90094

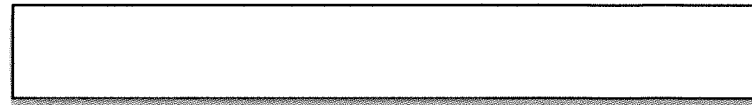
Sq. Ft. 48 ft<sup>2</sup>

**Non-illuminated monument sign**

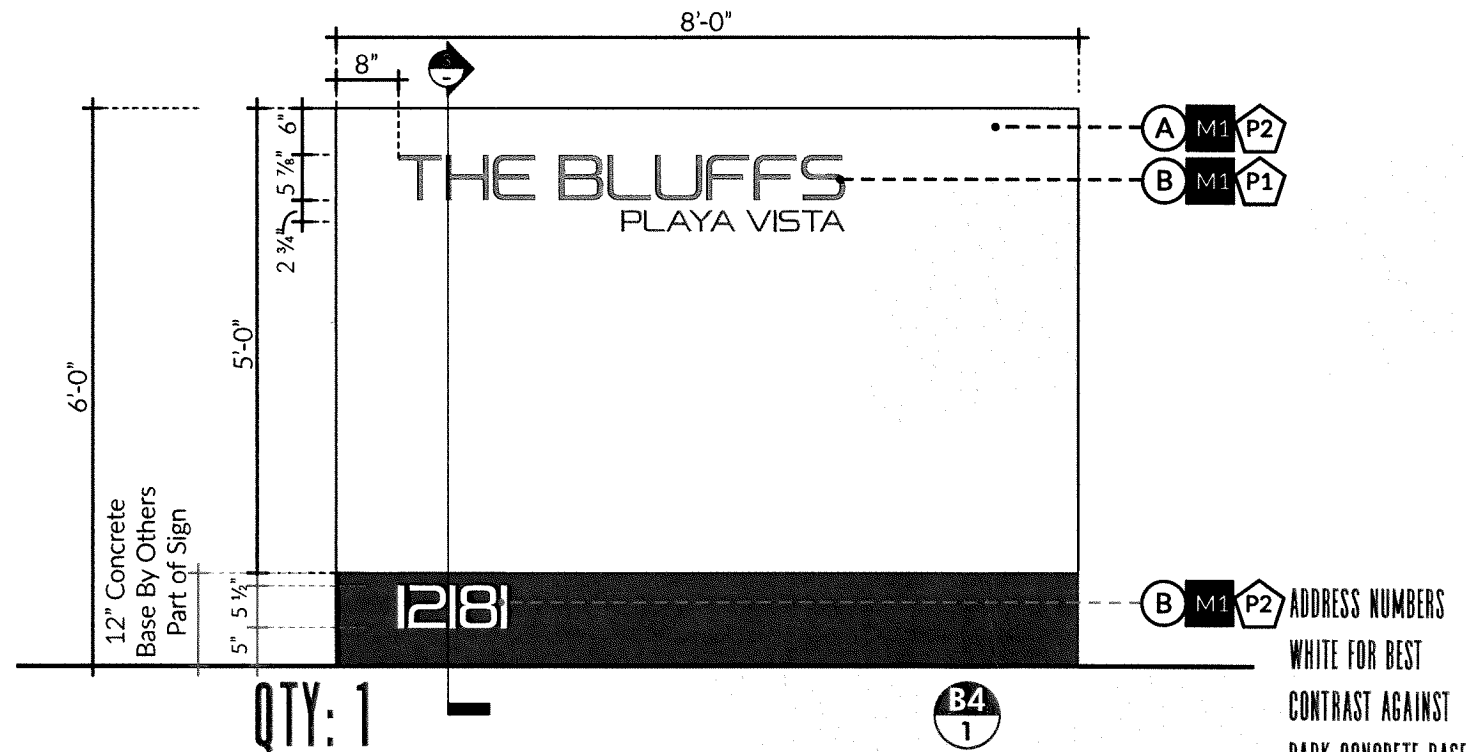
- (A) 1 1/2" x 1 1/2" x 3/16" thick Aluminum angle Frame. 12" Deep, .090" Aluminum Skin face & returns Painted P2 Matthews Satin "Natural White"
- (B) FCO: 3/8" Thick aluminum painted P1 Matthews Satin to match "Champagne 70% Kynar" fastened from backside of cabinet face with #8-32 SS countersunk screws
- (C) Monument sign Saddle mount to existing post on existing concrete.
- (D) Address Numbers: FCO 3/8" thick aluminum Painted P2 Matthews Satin "Natural White" Flush mounted existing concrete base with #10-24" x 2" long SS threaded studs

**MATERIAL/FINISH SCHEDULE**

<b>M1</b>	5052 Alloy H32	0.090" Mill Aluminum
<b>P1</b>	MP Custom Mix	Matthews Paint To Match Champagne 70% Kynar
<b>P2</b>	11477	Matthews Paint "Natural White"

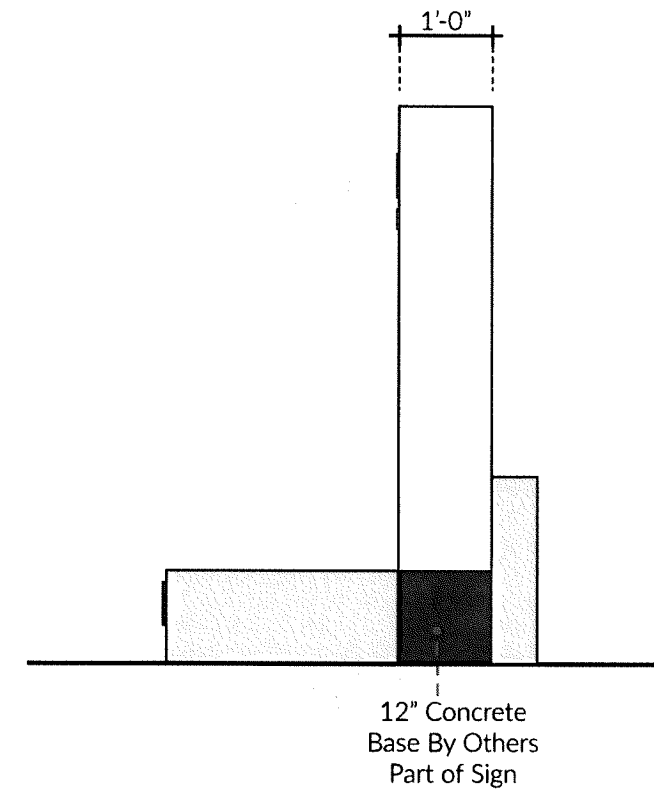


**1 Sign Fabrication Detail  
Plan View  
SCALE  
1/2" = 1'-0"**



**2 Sign Fabrication Detail  
Elevation View  
SCALE  
1/2" = 1'-0"**

**EXHIBIT "A"**  
Page No. 4 of 12  
Case No. DIR-2021-7296-SPP



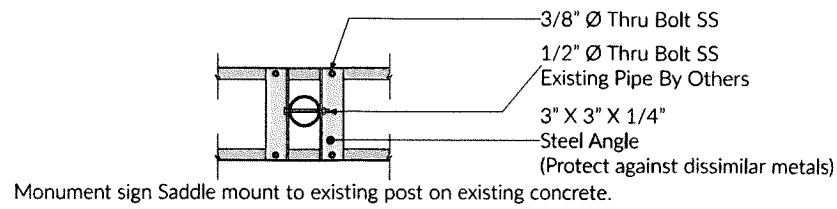
**3 Method of Attachment Detail  
Section View  
SCALE  
1/2" = 1'-0"**

# SIGN SPECIFICATIONS MOUNTING: 12181 (BUILDING 2)–NON ILLUMINATED SINGLE FACE MONUMENT SIGN

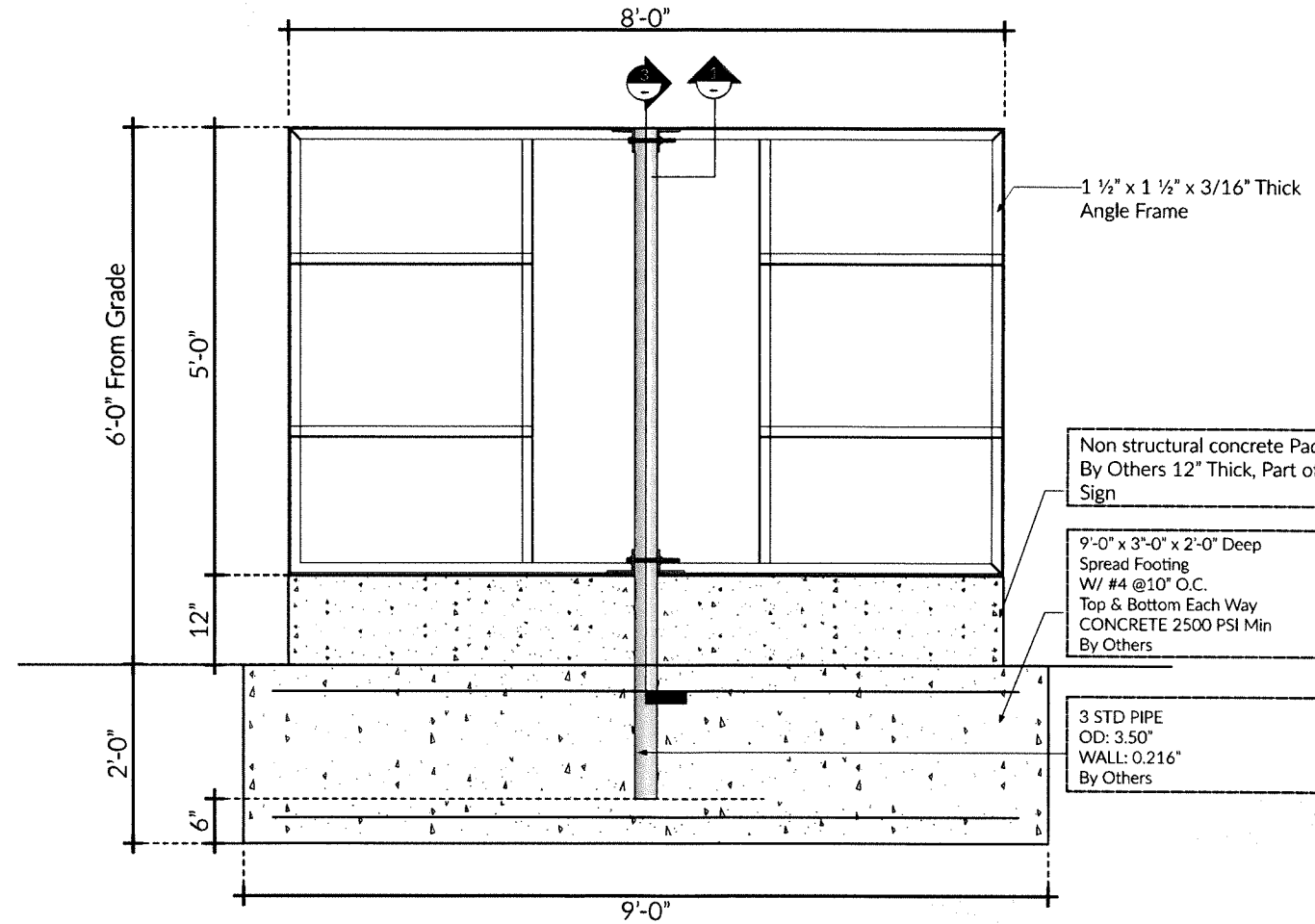
Location: 12181 Bluff Creek Dr  
Playa Vista, California 90094

Sq. Ft. 48 ft<sup>2</sup>

**1** Sign Fabrication Detail  
Plan View  
SCALE  
1/2" = 1'-0"



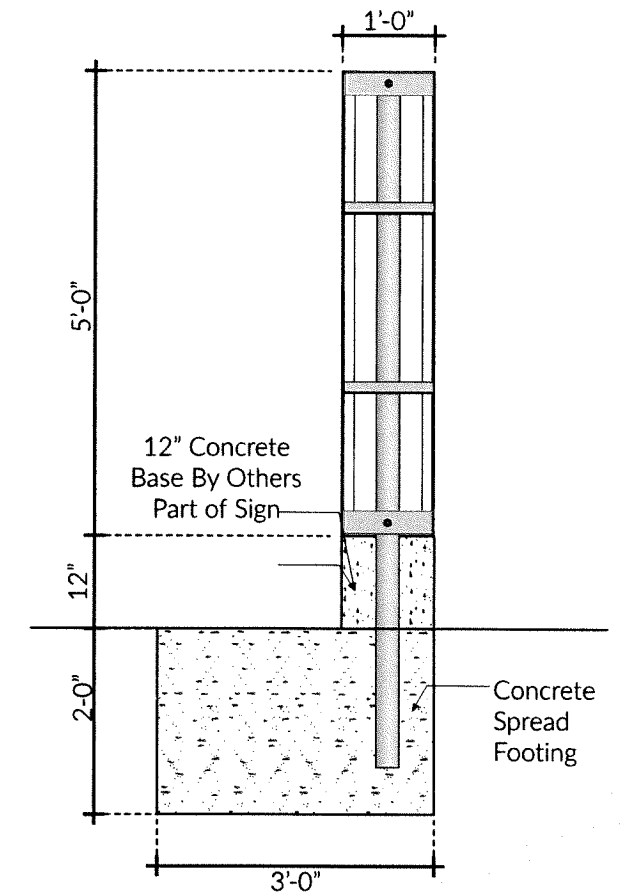
**B4**  
**1**



**EXHIBIT "A"**  
Page No. 5 of 12  
Case No. DIR-2021-7296-SPP

**2** Sign Fabrication Detail  
Elevation View  
SCALE  
1/2" = 1'-0"

**3** Method of Attachment Detail  
Section View  
SCALE  
1/2" = 1'-0"



# SIGN SPECIFICATIONS 12121 (BUILDING 1)–NON ILLUMINATED SINGLE FACE MONUMENT SIGN




Location: 12121 Bluff Creek Dr  
Playa Vista, California 90094

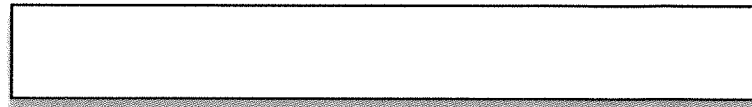
Sq. Ft. 48 ft<sup>2</sup>

**Non-illuminated monument sign**

- (A) 1 1/2" x 1 1/2" x 3/16" thick Aluminum angle Frame. 12" Deep, .090" Aluminum Skin face & returns Painted P2 Matthews Satin "Natural White"
- (B) FCO: 3/8" Thick aluminum painted P1 Matthews Satin to match "Champagne 70% Kynar" fastened from backside of cabinet face with #8-32 SS countersunk screws
- (C) Monument sign Saddle mount to existing post on existing concrete.
- (D) Address Numbers: FCO 3/8" thick aluminum Painted P2 Matthews Satin "Natural White" Flush mounted existing concrete base with #10-24" x 2" long SS threaded studs

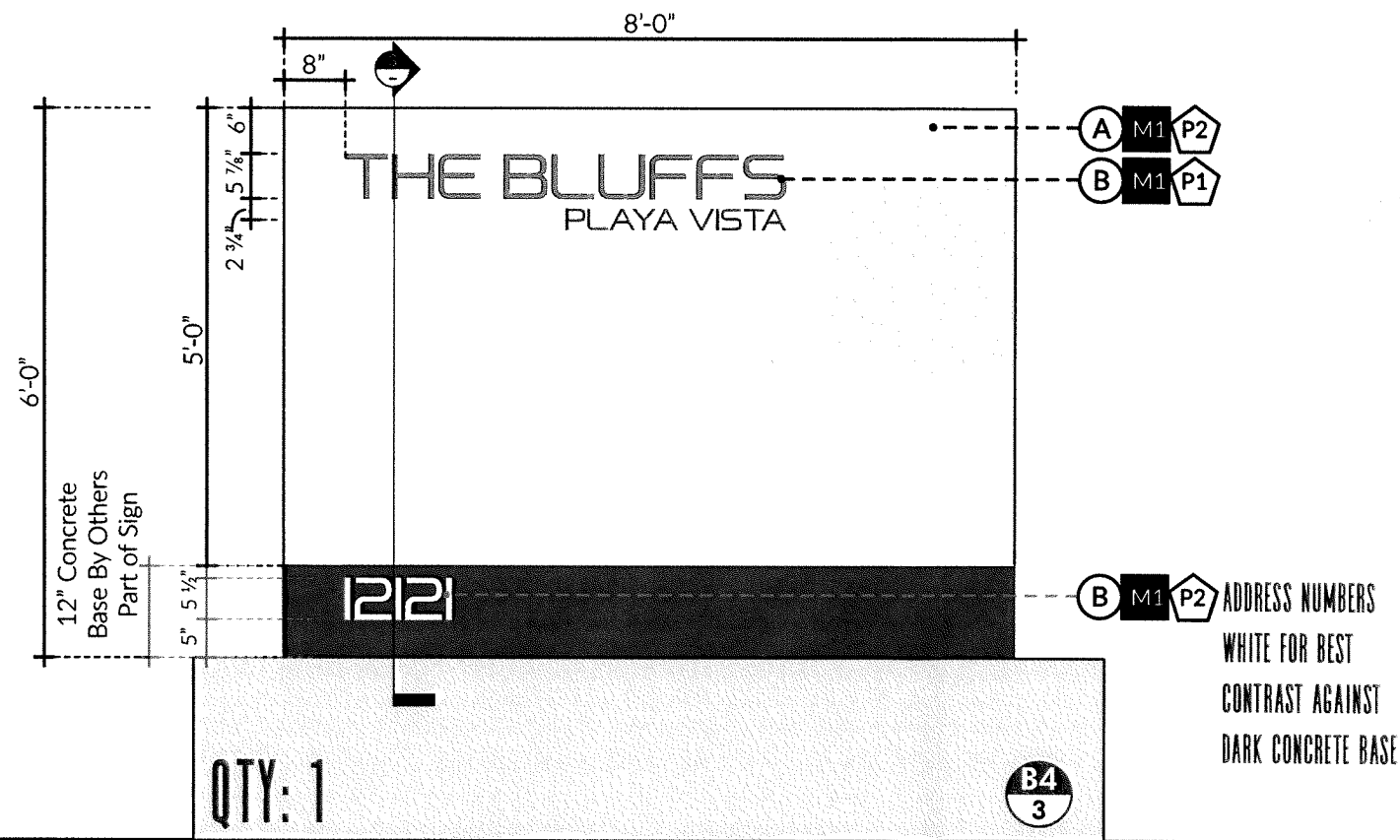
**MATERIAL/FINISH SCHEDULE**

<b>M1</b>	5052 Alloy H32		0.090" Mill Aluminum
<b>P1</b>	MP Custom Mix		Matthews Paint To Match Champagne 70% Kynar
<b>P2</b>	11477		Matthews Paint "Natural White"

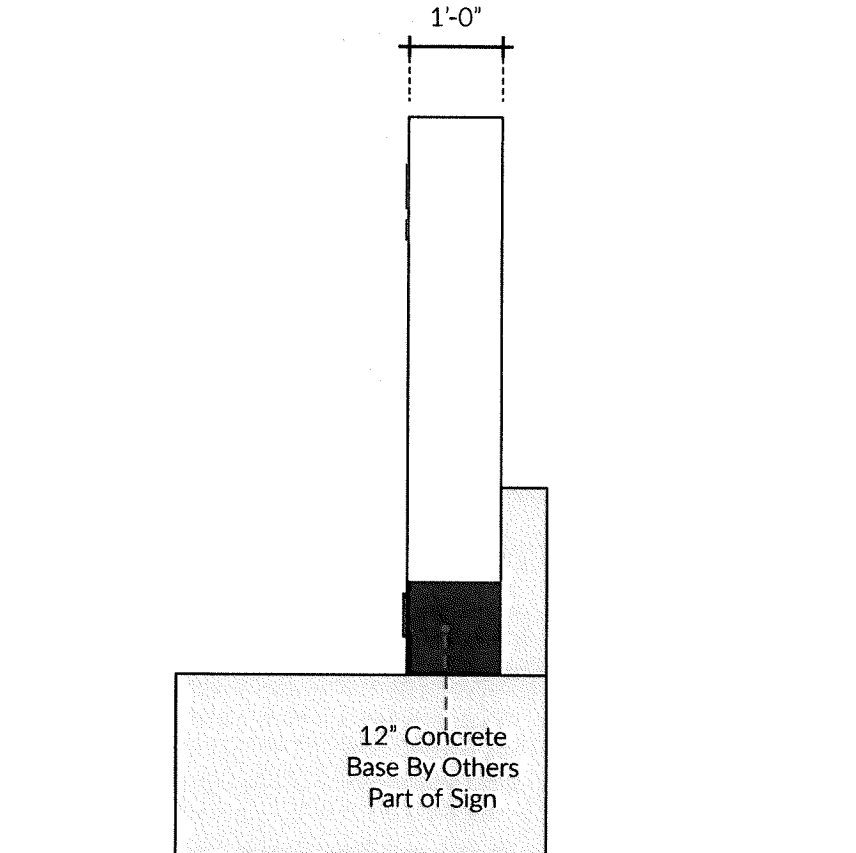


**EXHIBIT "A"**  
Page No. 11 of 12  
Case No. DIR-2021-7296-SPP

**1 Sign Fabrication Detail  
Plan View  
SCALE  
1/2" = 1'-0"**



**2 Sign Fabrication Detail  
Elevation View  
SCALE  
1/2" = 1'-0"**



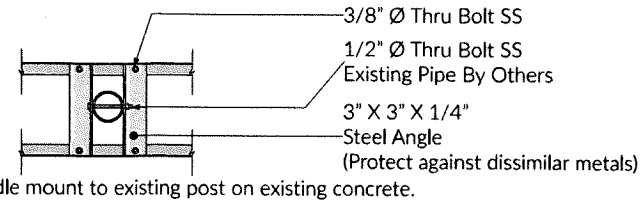
**3 Method of Attachment Detail  
Section View  
SCALE  
1/2" = 1'-0"**

# SIGN SPECIFICATIONS MOUNTING: 12121 (BUILDING 1) –NON ILLUMINATED SINGLE FACE MONUMENT SIGN

Location: 12121 Bluff Creek Dr  
Playa Vista, California 90094

Sq. Ft. 48 ft<sup>2</sup>

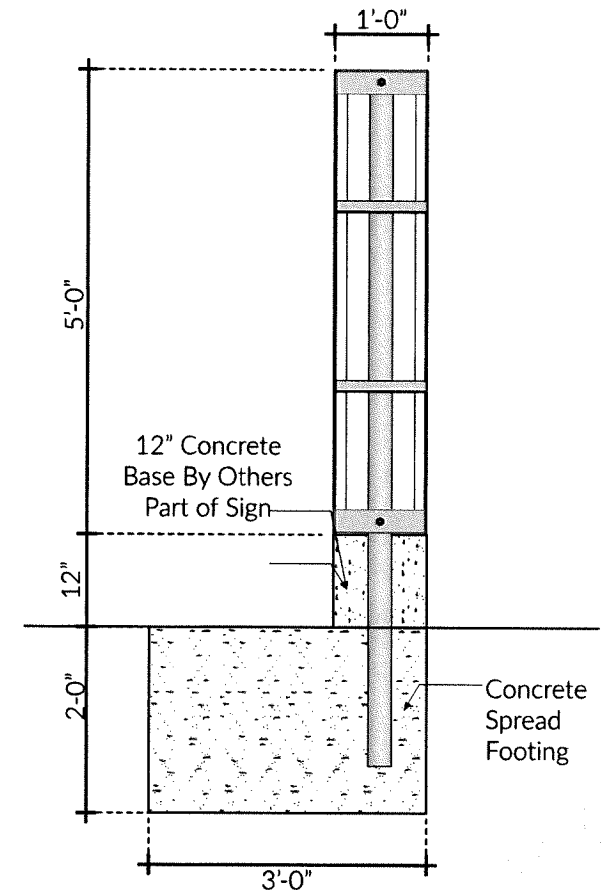
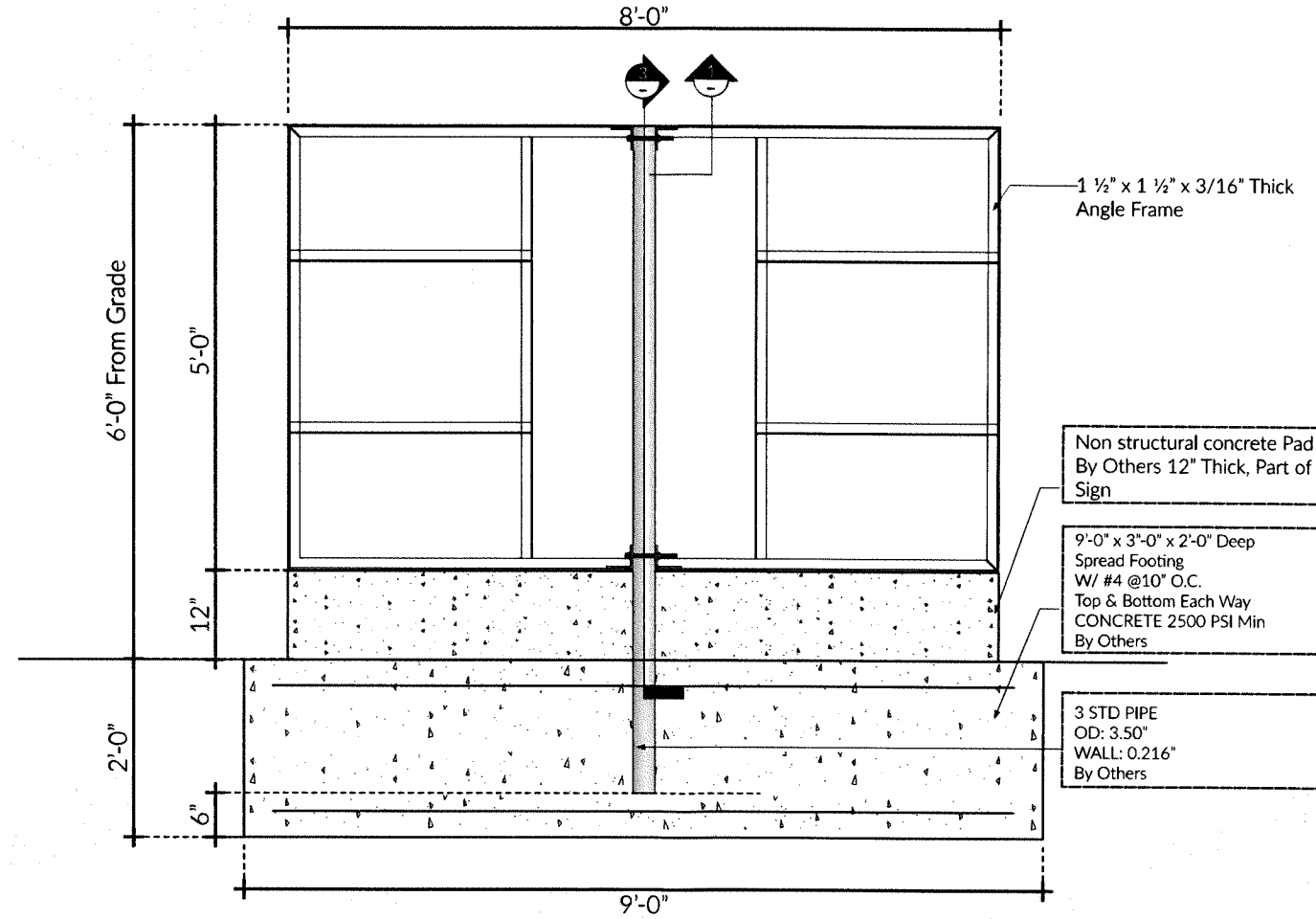
**1** Sign Fabrication Detail  
Plan View  
SCALE  
1/2" = 1'-0"



**3** Method of Attachment Detail  
Section View  
SCALE  
1/2" = 1'-0"

B4  
2      B4  
3

**EXHIBIT "A"**  
Page No. 12 of 12  
Case No. DIR-2021-7296-SPP



**2** Sign Fabrication Detail  
Elevation View  
SCALE  
1/2" = 1'-0"

**SIGN SPECIALISTS CORPORATION**

111 W. Dyer Rd., Unit F, Santa Ana, CA 92707 • Ph: 714.641.0064

Contact: Rick Batt • Email: rick.batt@signspecialists.com

SHEET  
A 7

863637 - 05.12.2021