

1. PARKING LEVEL 2 - FLOOR PLAN
3/16" = 1'-0"

NOTES:
1. FOR PARKING STALL COUNT SEE G003.

City of Los Angeles
Department of Building and Safety
Green Building Division

This set of plans and specifications has been reviewed and is approved for compliance with state and local ordinances related to the Green Building Code.

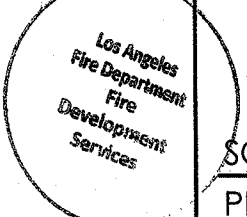
This set of plans MUST be at the job site during construction.

It is unlawful to alter, change, or deviate from these plans.

The stamping of this plan SHALL NOT be construed to be approval of a violation of any provisions of any Ordinance or Law.

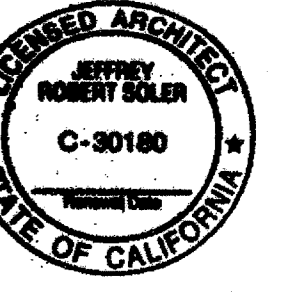
By: MM Total of 4127 Sheets
Date: _____ REV. DATE ISSUE

PLANS APPROVED
City of Los Angeles
City Planning Department
Date: 3/15/17 by: MM
Comments: D.I.R. - 2014-1918-DB



A100
FLOOR PLAN - LEVEL
P2

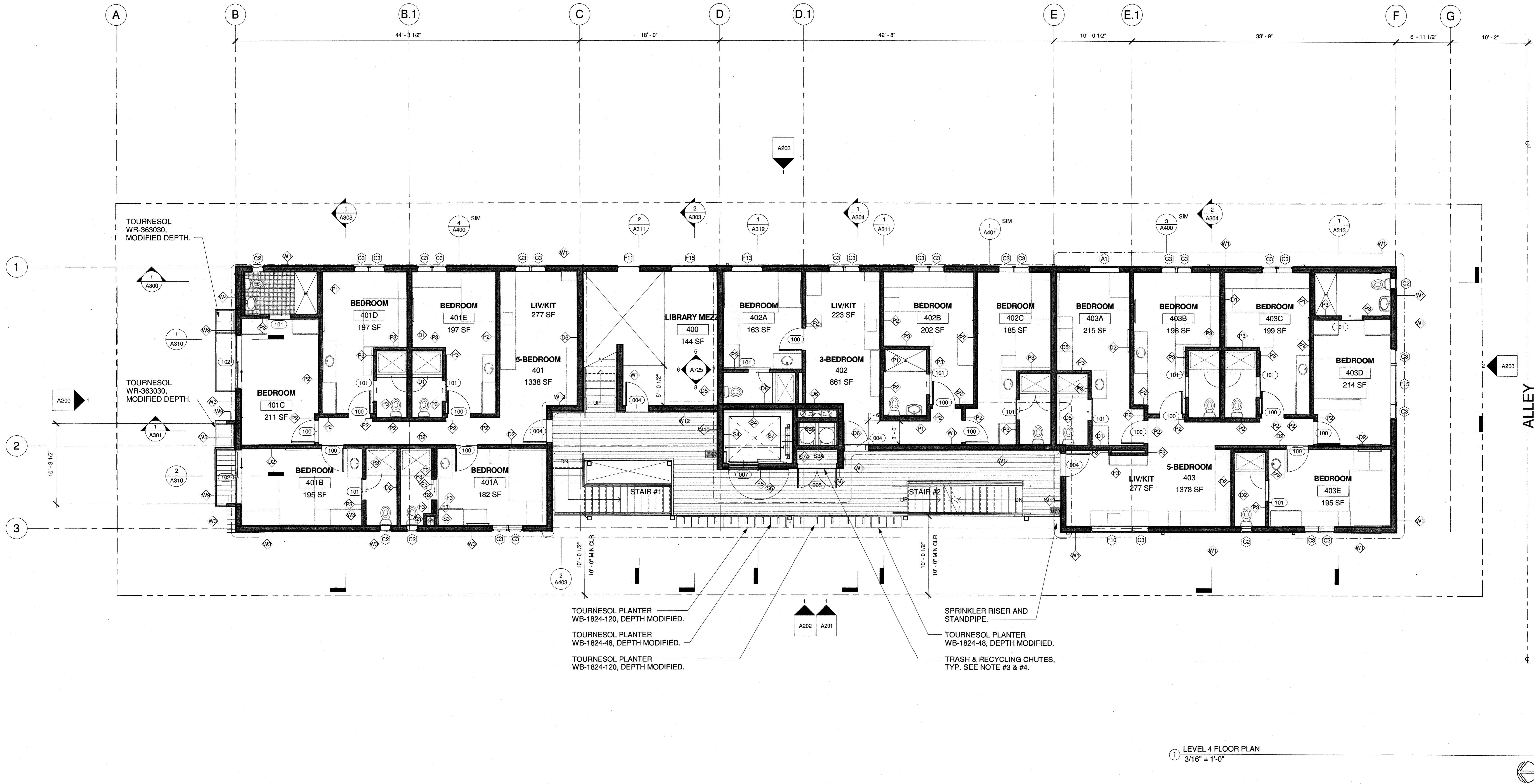
SCALE: 3/16" = 1'-0"
PRINT DATE: 3/16/2017 6:26:33 PM



Carlton Treehouse

5842 Carlton Way
Los Angeles, CA 90028

Upwell Real Estate
12525 Osprey Lane #2
Playa Vista, CA 90094



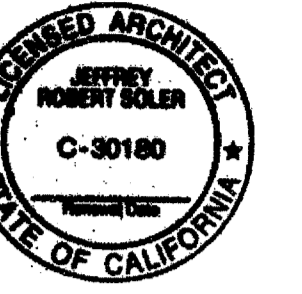
- NOTES:**
1. SEE A400 FOR ENLARGED UNIT PLANS.
 2. REFER TO SHEETS A050 THROUGH A063 FOR ACCESSIBILITY NOTES AND DIAGRAMS.
 3. ALL GRID LINES ALIGN WITH OUTSIDE FACE OF PLYWOOD SHEATHING UNLESS NOTED OTHERWISE.
 4. TRASH & RECYCLING CHUTES. RECYCLING CHUTES SHALL BE CLEARLY MARKED "RECYCLING ONLY" AT EVERY POINT OF ENTRY. (LAMC 12.21A19.C)
 5. TRASH CHUTE DOORS TO BE 90. MIN FIRE RATED.
 6. WHERE FIXED OR BUILT-IN SEATING, TABLES OR COUNTERS ARE PROVIDED FOR RESIDENTS OR GUESTS, 5 PERCENT BUT NOT LESS THAN ONE SHALL BE ACCESSIBLE PER LABC 1127A.12. PROVIDE ACCESSIBLE SEATING AT ALL COMMON USE AREAS - LOBBY, LIBRARY, DINING HALL AND OPEN SPACE AT ROOF.
 7. ELEVATOR DOORS HAVE A 90 MIN. FIRE RATING.

PLANS APPROVED
City of Los Angeles
City Planning Department
Date: 3/30/17
Comments: DIR-2014-1998-DB

REV. DATE ISSUE

A106
FLOOR PLAN - LEVEL 4

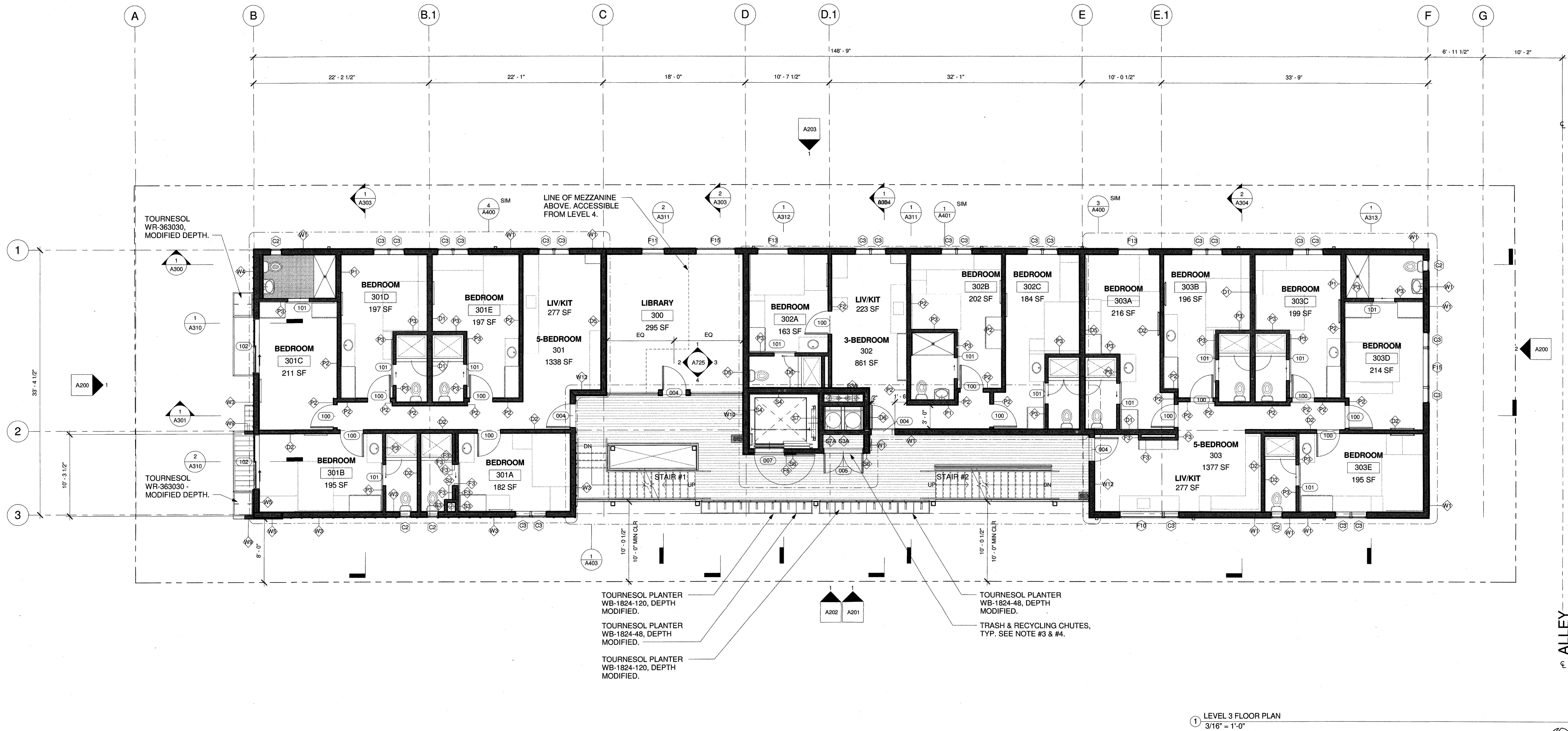
SCALE: As indicated
PRINT DATE: 3/14/2017 10:50:57 AM



Carlton Treehouse

5842 Carlton Way
Los Angeles, CA 90028

Upwell Real Estate
12525 Osprey Lane #2
Playa Vista, CA 90094



1 LEVEL 3 FLOOR PLAN
3/16" = 1'-0"

NOTES:

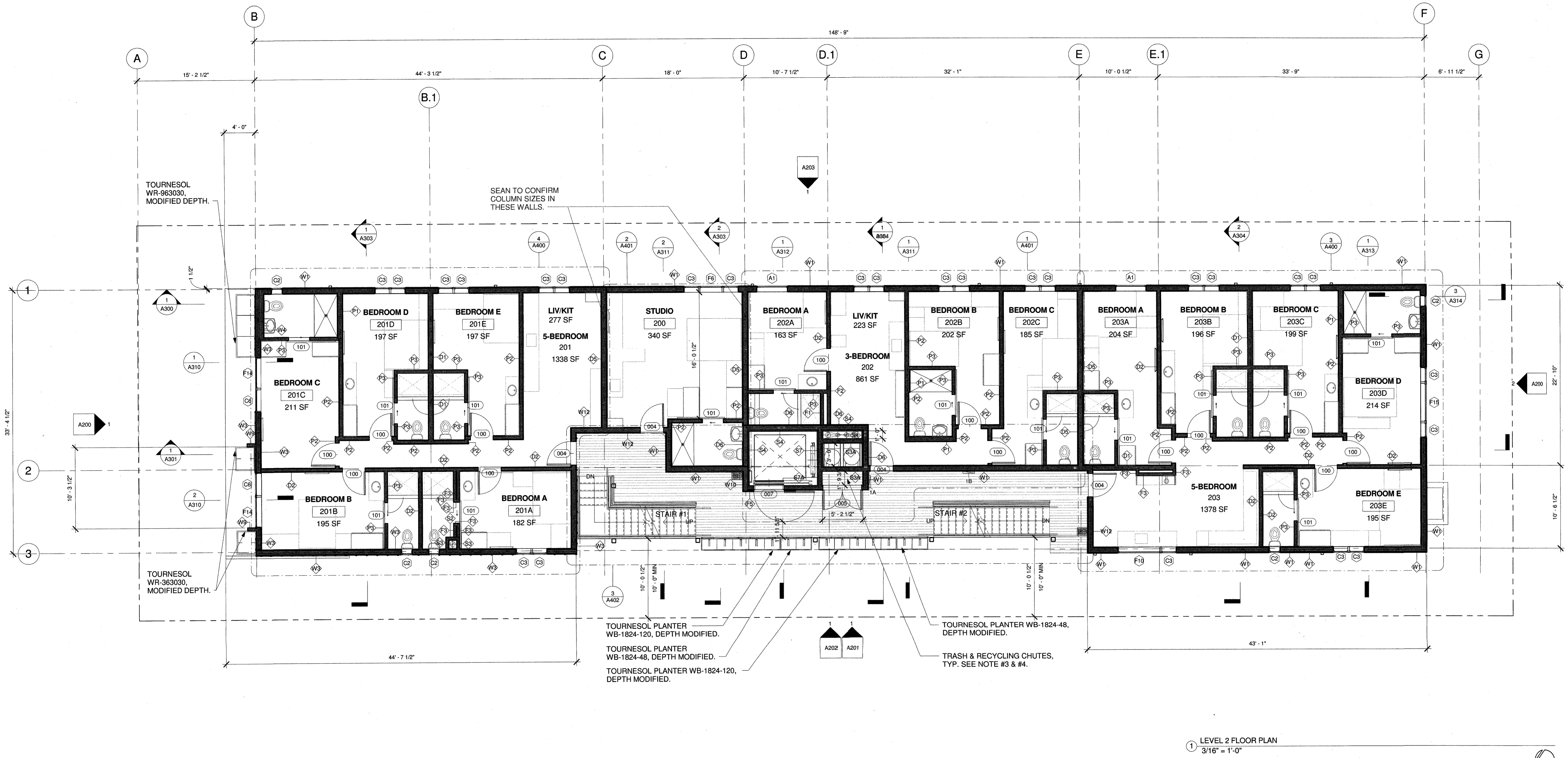
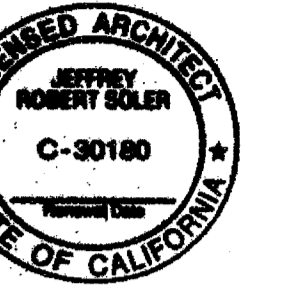
1. SEE A400 FOR ENLARGED UNIT PLANS.
2. REFER TO SHEETS A050 THROUGH A063 FOR ACCESSIBILITY NOTES AND DIAGRAMS.
3. ALL GRID LINES ALIGN WITH OUTSIDE FACE OF PLYWOOD SHEATHING UNLESS NOTED OTHERWISE.
4. TRASH & RECYCLING CHUTES. RECYCLING CHUTES SHALL BE CLEARLY MARKED "RECYCLING ONLY" AT EVERY POINT OF ENTRY. (LAMC 12.21A19.C)
5. TRASH CHUTE DOORS TO BE 90. MIN FIRE RATED.
6. WHERE FIXED OR BUILT-IN SEATING, TABLES OR COUNTERS ARE PROVIDED FOR RESIDENTS OR GUESTS, 5 PERCENT BUT NOT LESS THAN ONE SHALL BE ACCESSIBLE PER LABC 1127A.12. PROVIDE ACCESSIBLE SEATING AT ALL COMMON USE AREAS - LOBBY, LIBRARY, DINING HALL AND OPEN SPACE AT ROOF.
7. ELEVATOR DOORS HAVE A 90 MIN. FIRE RATING.

PLANS APPROVED
City of Los Angeles
City Planning Department
Date: 5/30/13
Comments: D.I.R. - 2014-1998 - PB

REV. DATE ISSUE

A105
FLOOR PLAN - LEVEL 3

SCALE: As indicated
PRINT DATE: 3/14/2017 10:50:53 AM



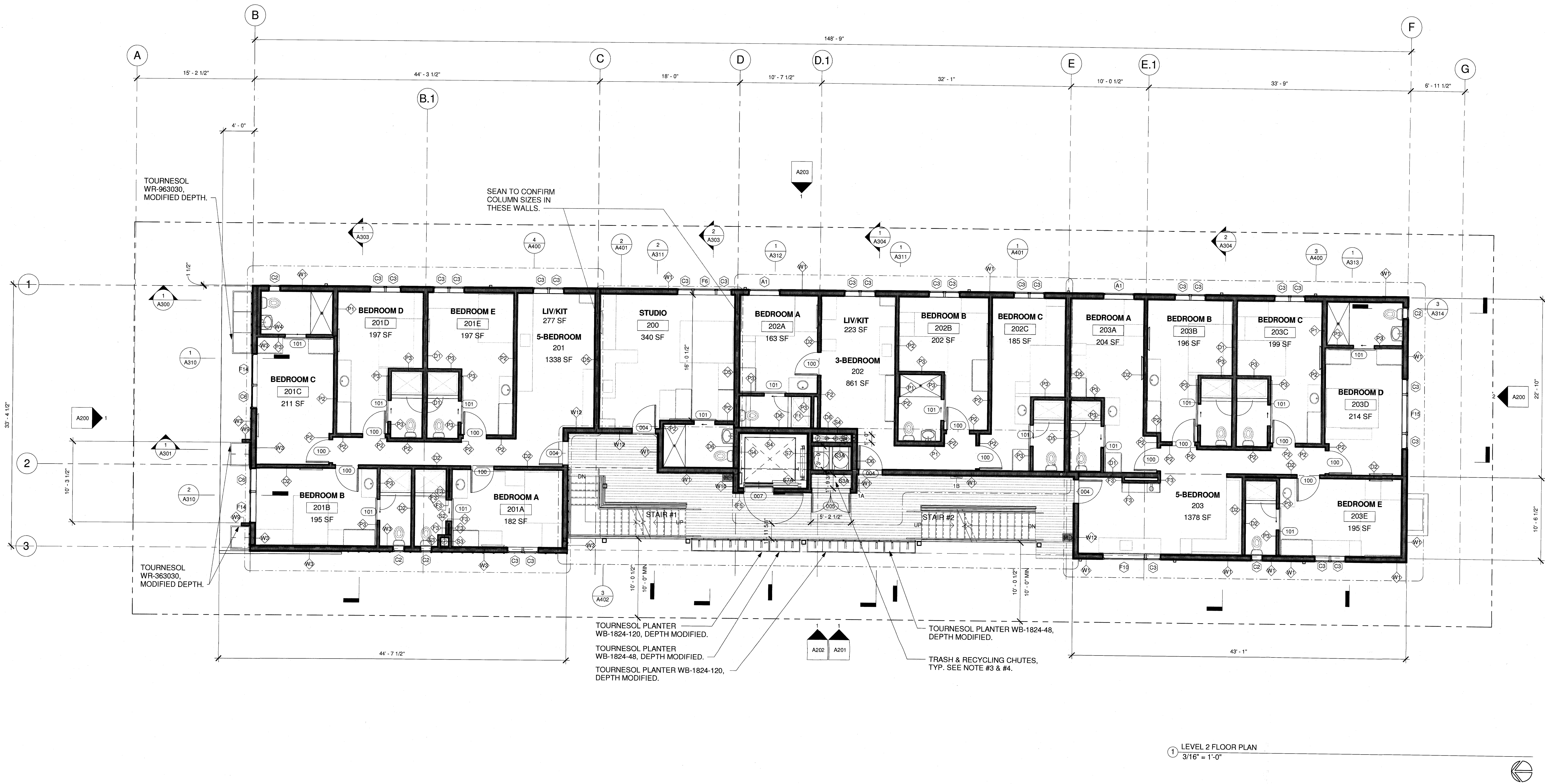
- NOTES:
- SEE A400 FOR ENLARGED UNIT PLANS.
 - REFER TO SHEETS A050 THROUGH A063 FOR ACCESSIBILITY NOTES AND DIAGRAMS.
 - ALL GRID LINES ALIGN WITH OUTSIDE FACE OF PLYWOOD SHEATHING UNLESS NOTED OTHERWISE.
 - TRASH & RECYCLING CHUTES, RECYCLING CHUTES SHALL BE CLEARLY MARKED "RECYCLING ONLY" AT EVERY POINT OF ENTRY. (LAMC 12.21A19.C)
 - TRASH CHUTE DOORS TO BE 90 MIN FIRE RATED.
 - WHERE FIXED OR BUILT-IN SEATING, TABLES OR COUNTERS ARE PROVIDED FOR RESIDENTS OR GUESTS, 5 PERCENT BUT NOT LESS THAN ONE SHALL BE ACCESSIBLE PER LABC 1127A.12. PROVIDE ACCESSIBLE SEATING AT ALL COMMON USE AREAS - LOBBY, LIBRARY, DINING HALL AND OPEN SPACE AT ROOF.
 - ELEVATOR DOORS HAVE A 90 MIN. FIRE RATING.

APPROVED
FIRE HYDRANT AND ACCESS
LOS ANGELES FIRE DEPARTMENT
FIRE DEVELOPMENT SERVICES
RALPH M. TERRAZAS
FIRE CHIEF
BY: [Signature] #1444
DATE: 3-15-17

PLANS APPROVED
City of Los Angeles
City Planning Department
Date: 3/30/17
Comments: DIR-2014-1998-DB

REV. DATE ISSUE

A104
FLOOR PLAN - LEVEL 2



1 LEVEL 2 FLOOR PLAN
3/16" = 1'-0"

- NOTES:
1. SEE A400 FOR ENLARGED UNIT PLANS.
 2. REFER TO SHEETS A050 THROUGH A063 FOR ACCESSIBILITY NOTES AND DIAGRAMS.
 3. ALL GRID LINES ALIGN WITH OUTSIDE FACE OF PLYWOOD SHEATHING UNLESS NOTED OTHERWISE.
 4. TRASH & RECYCLING CHUTES. RECYCLING CHUTES SHALL BE CLEARLY MARKED "RECYCLING ONLY" AT EVERY POINT OF ENTRY. (LAMC 12.21A19.C)
 5. TRASH CHUTE DOORS TO BE 90. MIN FIRE RATED.
 6. WHERE FIXED OR BUILT-IN SEATING, TABLES OR COUNTERS ARE PROVIDED FOR RESIDENTS OR GUESTS, 5 PERCENT BUT NOT LESS THAN ONE SHALL BE ACCESSIBLE PER LABC 1127A.12. PROVIDE ACCESSIBLE SEATING AT ALL COMMON USE AREAS - LOBBY, LIBRARY, DINING HALL AND OPEN SPACE AT ROOF.
 7. ELEVATOR DOORS HAVE A 90 MIN. FIRE RATING.

PLANS APPROVED
City of Los Angeles
City Planning Department
Date: 3/30/16
Comments: DIR-2014-1948-DB



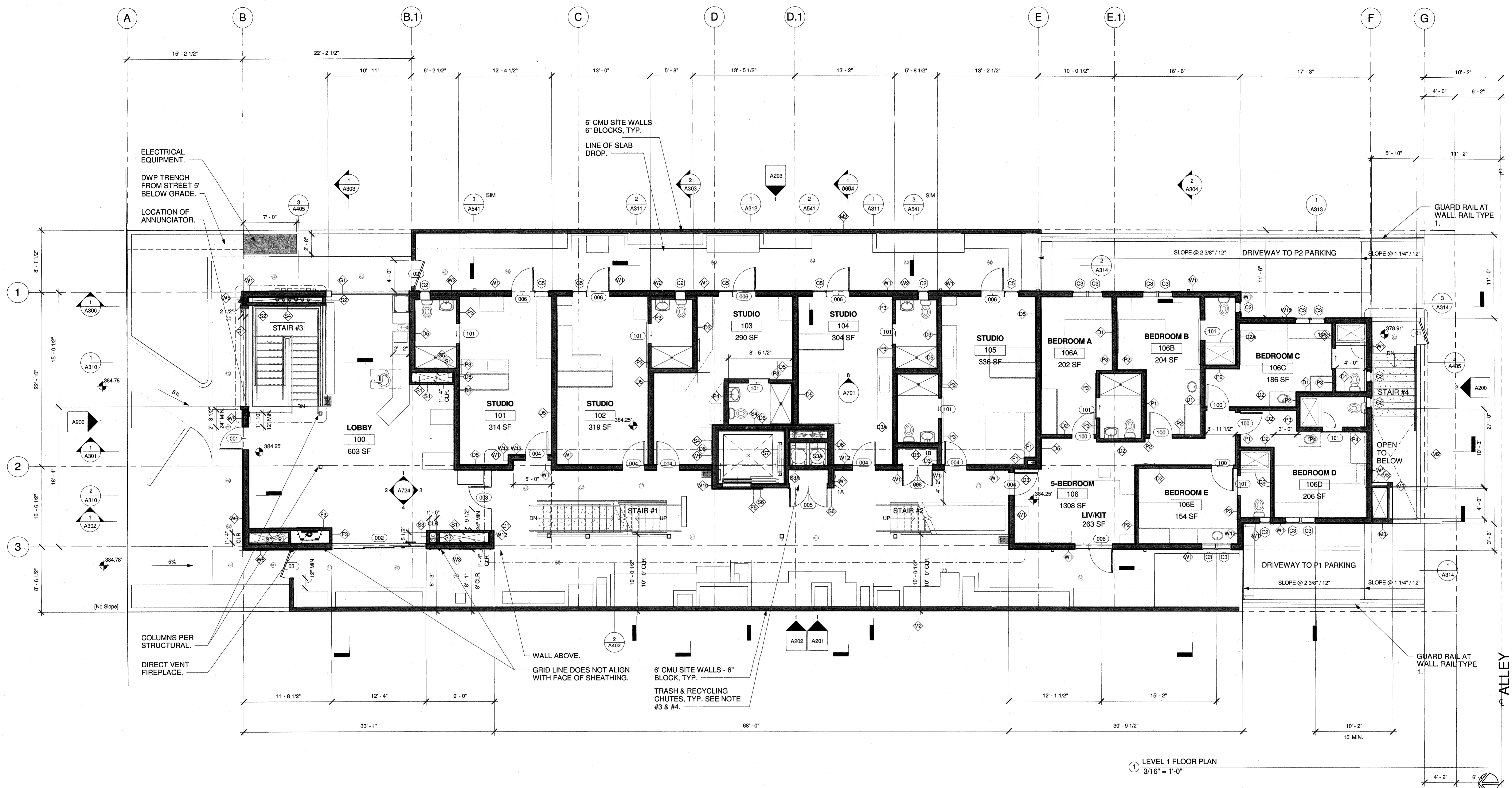
Carlton Treehouse

5842 Carlton Way
Los Angeles, CA 90028

Upwell Real Estate
12515 Osprey Lane #2
Playa Vista, CA 90094

REV.	DATE	ISSUE

A104
FLOOR PLAN - LEVEL 2



- NOTES:
- SEE A400 FOR ENLARGED UNIT PLANS.
 - REFER TO SHEETS A050 THROUGH A063 FOR ACCESSIBILITY NOTES AND DIAGRAMS.
 - ALL GRID LINES ALIGN WITH OUTSIDE FACE OF PLYWOOD SHEATHING UNLESS NOTED OTHERWISE.
 - TRASH & RECYCLING CHUTES. RECYCLING CHUTES SHALL BE CLEARLY MARKED "RECYCLING ONLY" AT EVERY POINT OF ENTRY. (LAMC 12.21A19.C)
 - TRASH CHUTE DOORS TO BE 90. MIN FIRE RATED.
 - WHERE FIXED OR BUILT-IN SEATING, TABLES OR COUNTERS ARE PROVIDED FOR RESIDENTS OR GUESTS, 5 PERCENT BUT NOT LESS THAN ONE SHALL BE ACCESSIBLE PER LABC 1127A.12. PROVIDE ACCESSIBLE SEATING AT ALL COMMON USE AREAS - LOBBY, LIBRARY, DINING HALL AND OPEN SPACE AT ROOF.
 - ELEVATOR DOORS HAVE A 90 MIN. FIRE RATING.



City of Los Angeles
Department of Building and Safety
Green Building Division

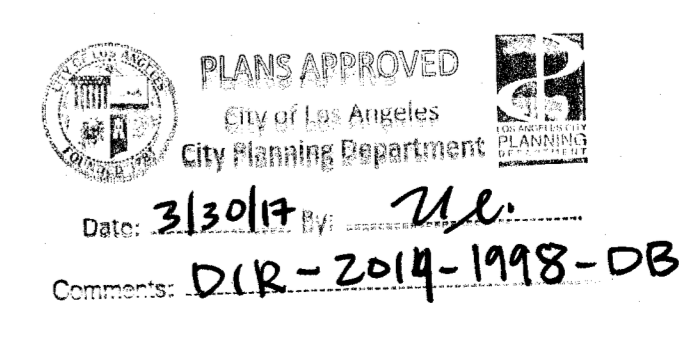
This set of plans and specifications has been reviewed and approved for compliance with state and local ordinances related to the Green Building Code.

This set of plans MUST be at the job site during construction.

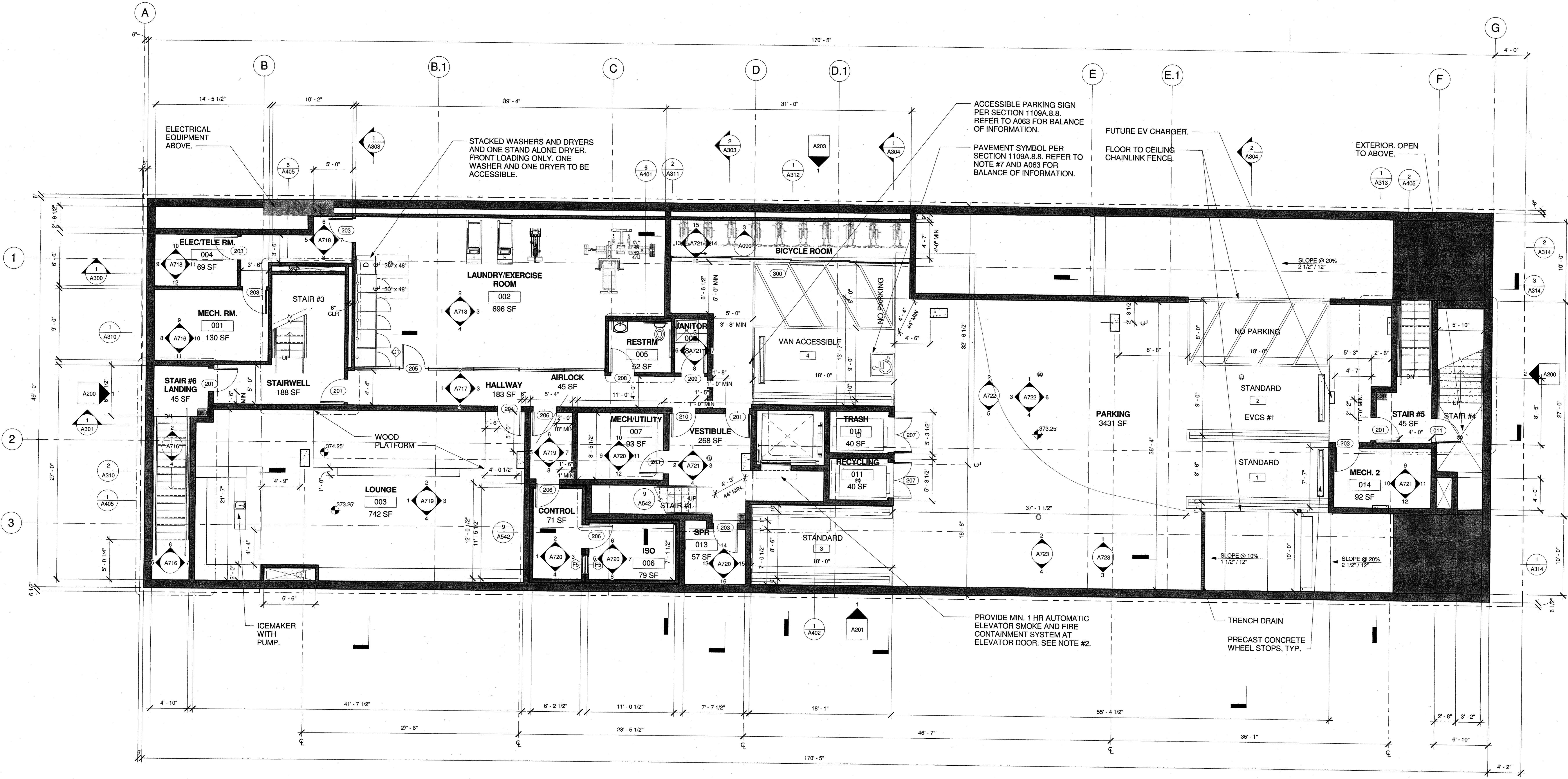
It is unlawful to alter, change, or deviate from these plans.

The stamping of this plan SHALL NOT be construed to be approval of a violation of any provisions of any Ordinance or Law.

By: NN Total of 627 Sheets
Date: _____



A102
FLOOR PLAN - LEVEL 1



1 PARKING LEVEL 1 - FLOOR PLAN
3/16" = 1'-0"

- NOTES:
- FOR PARKING STALL COUNT SEE G003.
 - AUTOMATIC ELEVATOR SMOKE AND FIRE CONTAINMENT SYSTEM TO BE DOOR SYSTEMS ELEVATOR SMOKE CURTAIN MODEL DSI600 - SD60 THIS SYSTEM CARRIES A UL 1784 SMOKE MIGRATION AND S LABEL CALIFORNIA STATE FIRE MARSHALL LISTING, AND ICC ESR-3322. THE DSI 600 SYSTEM ALSO HAS OSHPD APPROVAL AND HAS LOS ANGELES CITY FIRE DEPARTMENT ACCEPTANCE FOR HIGH RISE APPLICATIONS. CALIFORNIA STATE FIRE MARSHALL: 4076-2090:0004; 7140-2090:0002 & ICC-AC77 ESR-3322
 - ALL WASHERS AND DRYERS TO BE FRONT LOAD ONLY AND ADA COMPLIANT.
 - RECYCLING CHUTES SHALL BE CLEARLY MARKED "RECYCLING ONLY" AT EVERY POINT OF ENTRY. (LAMC 12.21A19.0)
 - PROVIDE ACCESSIBLE SEATING AT LOUNGE.
 - REFER TO SHEETS A050 THROUGH A063 FOR ACCESSIBILITY NOTES AND DIAGRAMS.
 - THE PARKING SPACE SHALL BE MARKED WITH THE "INTERNATIONAL SYMBOL OF ACCESSIBILITY", IN WHITE ON A BLUE BACKGROUND, 36 INCHES WIDE BY 36 INCHES HIGH MINIMUM IN SIZE. THE CENTERLINE OF THE "INTERNATIONAL SYMBOL OF ACCESSIBILITY" SHALL BE 6 INCHES MAXIMUM FROM THE CENTERLINE OF THE PARKING SPACE. ITS SIDES SHALL BE PARALLEL TO THE LENGTH OF THE PARKING SPACE, AND ITS LOWER SIDE SHALL BE ALIGNED WITH THE END OF THE PARKING SPACE LENGTH. NOTE: SEE FIGURES 11A-2A, 11A-2B, AND 11A-2C.

CITY OF LOS ANGELES
DEPARTMENT OF BUILDING AND SAFETY
DISABLED ACCESS SECTION

This set of plans and specifications has been reviewed and is approved for compliance with state and local laws and ordinances related to accessibility to public accommodations and housing.

The stamping of this set of plans and specifications shall not be held to permit or to be an approval of the violation of any provisions of federal, state, and local laws and ordinances related to accessibility to public accommodations and housing.

By: _____ Total of _____ Sheets
Date: _____

City of Los Angeles
Department of Building and Safety
Green Building Division

This set of plans and specifications has been reviewed and is approved for compliance with state and local laws and ordinances related to the Green Building Code.

This set of plans MUST be at the job site during construction.

It is unlawful to alter, change, or deviate from these plans.

The stamping of this plan SHALL NOT be construed to be approval of a violation of any provisions of any Ordinance or Law.

By: NN Total of 5127 Sheets
Date: _____

PLANS APPROVED
City of Los Angeles
City Planning Department
Date: 3/30/17 By: ML
Comments: DIR-99-2014-1998-DB

