



THIS DOCUMENT AND THE IDEAS AND DESIGN HEREIN, AS AN INSTRUMENT OF PROFESSIONAL SERVICE, IS THE PROPERTY OF JDO ASSOCIATES, INC. AND IS NOT TO BE USED, IN WHOLE OR IN PART, FOR ANY PROJECT WITHOUT THE WRITTEN AUTHORIZATION OF JDO ASSOCIATES, INC.

Revisions

PRODUCERS RECORDING STUDIOS

10859 BURBANK BLVD.
NORTH HOLLYWOOD, CA 91601

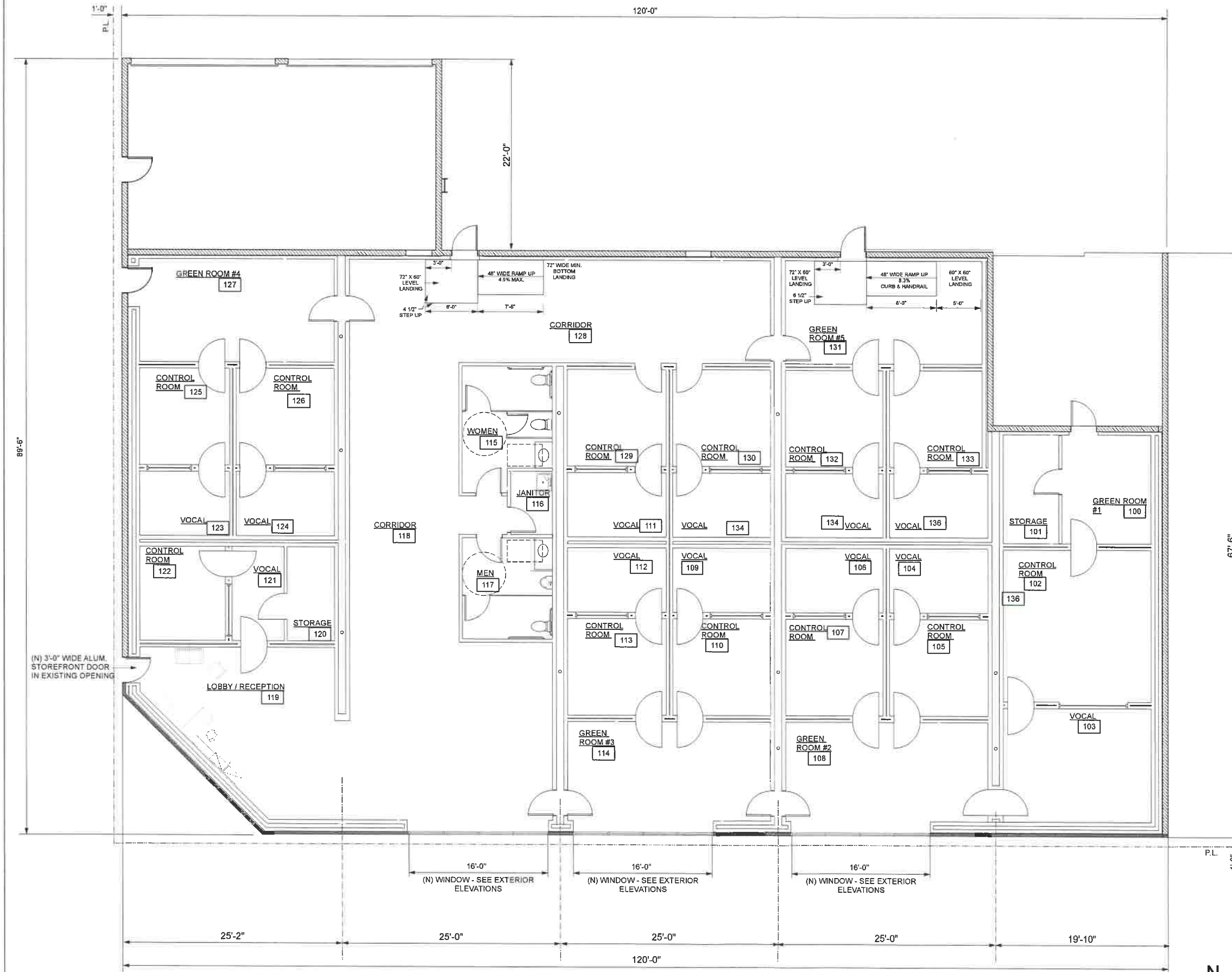
FLOOR PLAN

Date: _____
Job: _____
Drawn by: _____

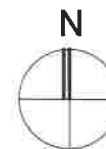
Sheet:

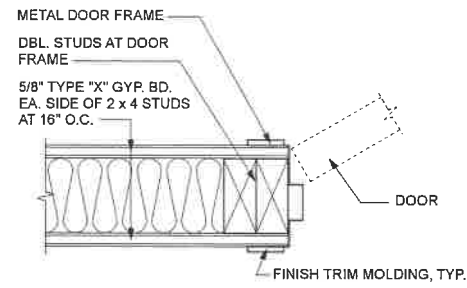
EXHIBIT "A"
Page No. 4 of 9
Case No. 2A-2021-7185

A-3.1

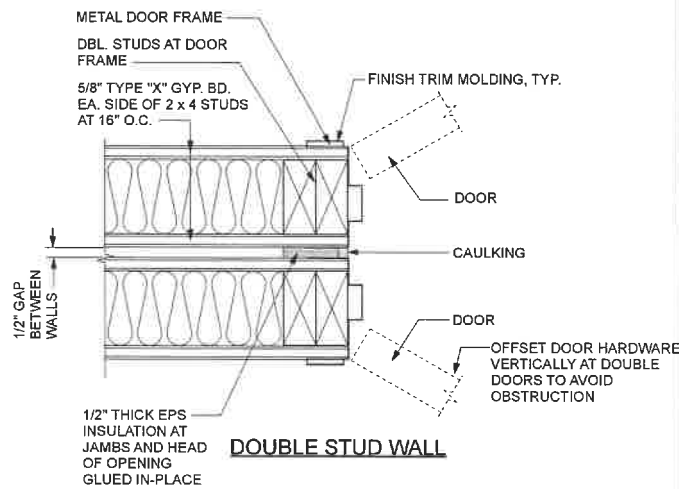


FLOOR PLAN
3/16" = 1'-0"

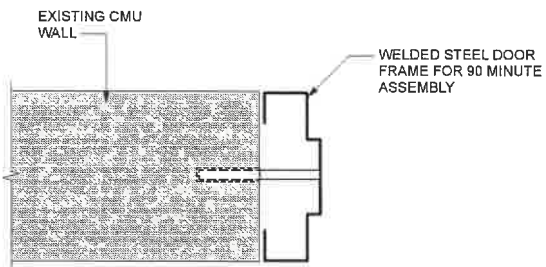




SINGLE STUD WALL



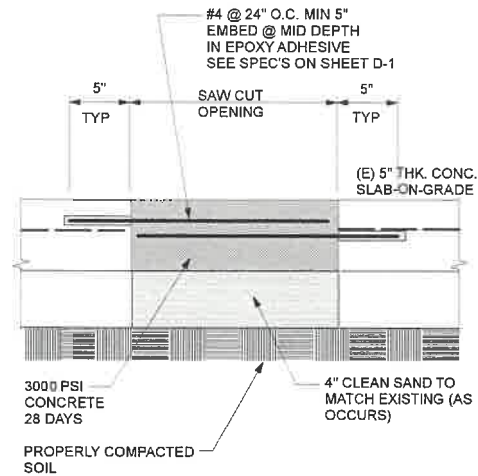
DOUBLE STUD WALL



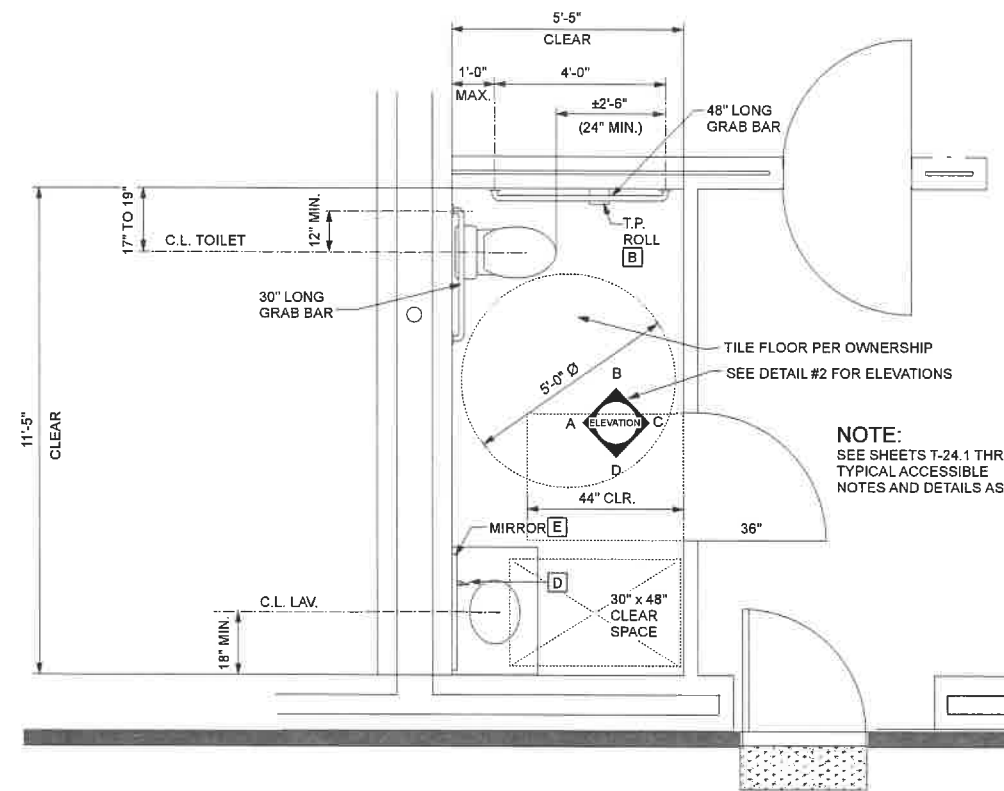
EXISTING CMU WALL

SC: 3" = 1'-0"

DOOR JAMBS | 4



SAWCUT SLAB REPAIR | 3



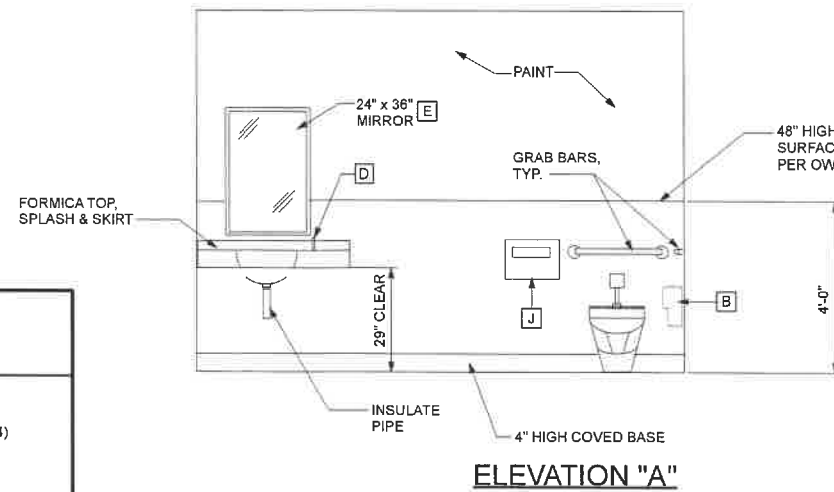
NOTE:
SEE SHEETS T-24.1 THROUGH T-24.12 FOR TYPICAL ACCESSIBLE NOTES AND DETAILS AS APPLIES.

SC: 1/2" = 1'0"

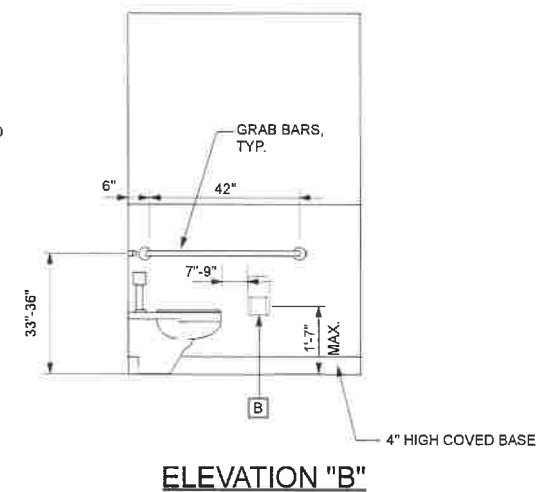
TYPICAL STUDIO RESTROOM PLAN | 1

TOILET ROOM ACCESSORIES

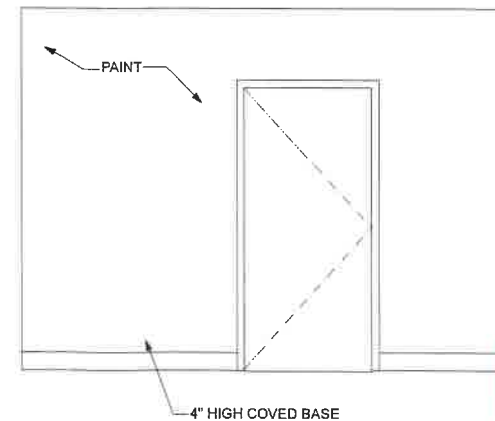
- [A] RECESSED TOWEL DISPENSER AND WASTE RECEPTACLE (BOBRICK B-3944)
- [B] MULTI-ROLL TOILET TISSUE DISPENSER (BOBRICK B-2740)
- [C] SOAP DISPENSER (BOBRICK B-195) PROVIDE ONE FOR EVERY TWO LAV'S
- [D] SOAP DISPENSER FOR COUNTER TOP INSTALLATION (BOBRICK B-8221) PROVIDE ONE FOR EVERY TWO LAVS.
- [E] MIRROR AT COUNTER TOP LAV'S (BOBRICK B-290 - 2436) SERIES
- [F] MIRROR AT WALL MOUNTED LAV. (BOBRICK B-165 1830)
- [G] NAPKIN / TAMPON VENDOR (BOBRICK B-352) IF REQ'D. VERIFY W / OWNER
- [H] SANITARY NAPKIN DISPOSAL (BOBRICK B-271) ONE FOR EACH TOILET
- [J] TOILET SEAT COVER DISPENSER (BOBRICK B-221)
- [K] GRAB BARS - SIDE AND REAR (BOBRICK B-5507)



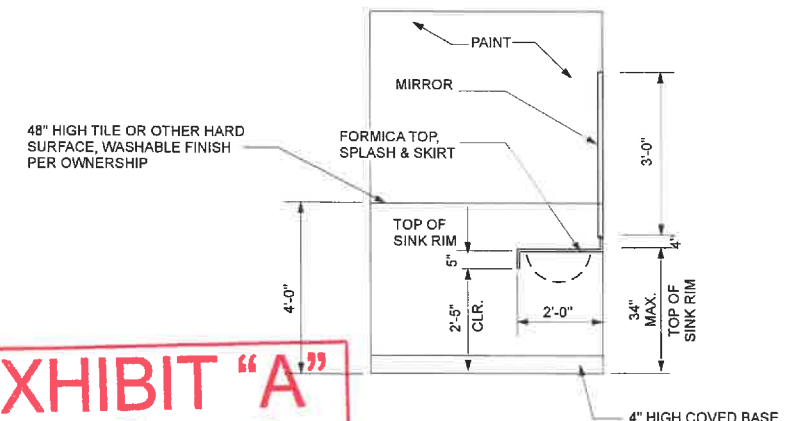
ELEVATION "A"



ELEVATION "B"



ELEVATION "C"



ELEVATION "D"

EXHIBIT "A"
Page No. 5 of 9
Case No. 2A-2021-7185

SC: 1/2" = 1'0"

TYPICAL RESTROOM INTERIOR ELEVATIONS | 2



Associates
31822 Village Center Road
Suite 105
Westlake Village, CA 91361
Phone 818. 706. 3997



THIS DOCUMENT AND THE IDEAS AND ORIGINAL DESIGN ARE AN INSTRUMENT OF PROFESSIONAL SERVICE IN THE PROPERTY OF JDO+ ASSOCIATES, INC. AND IS NOT TO BE REPRODUCED, COPIED, OR IN ANY MANNER FOR ANY PROJECT WITHOUT THE WRITTEN AUTHORIZATION OF JDO+ ASSOCIATES, INC.

Revisions

PRODUCERS RECORDING STUDIOS

10859 BURBANK BLVD.
NORTH HOLLYWOOD, CA 91601

TYPICAL UNIT FLOOR PLAN

Date:

Job:

Drawn by:

Sheet:

A-3.2



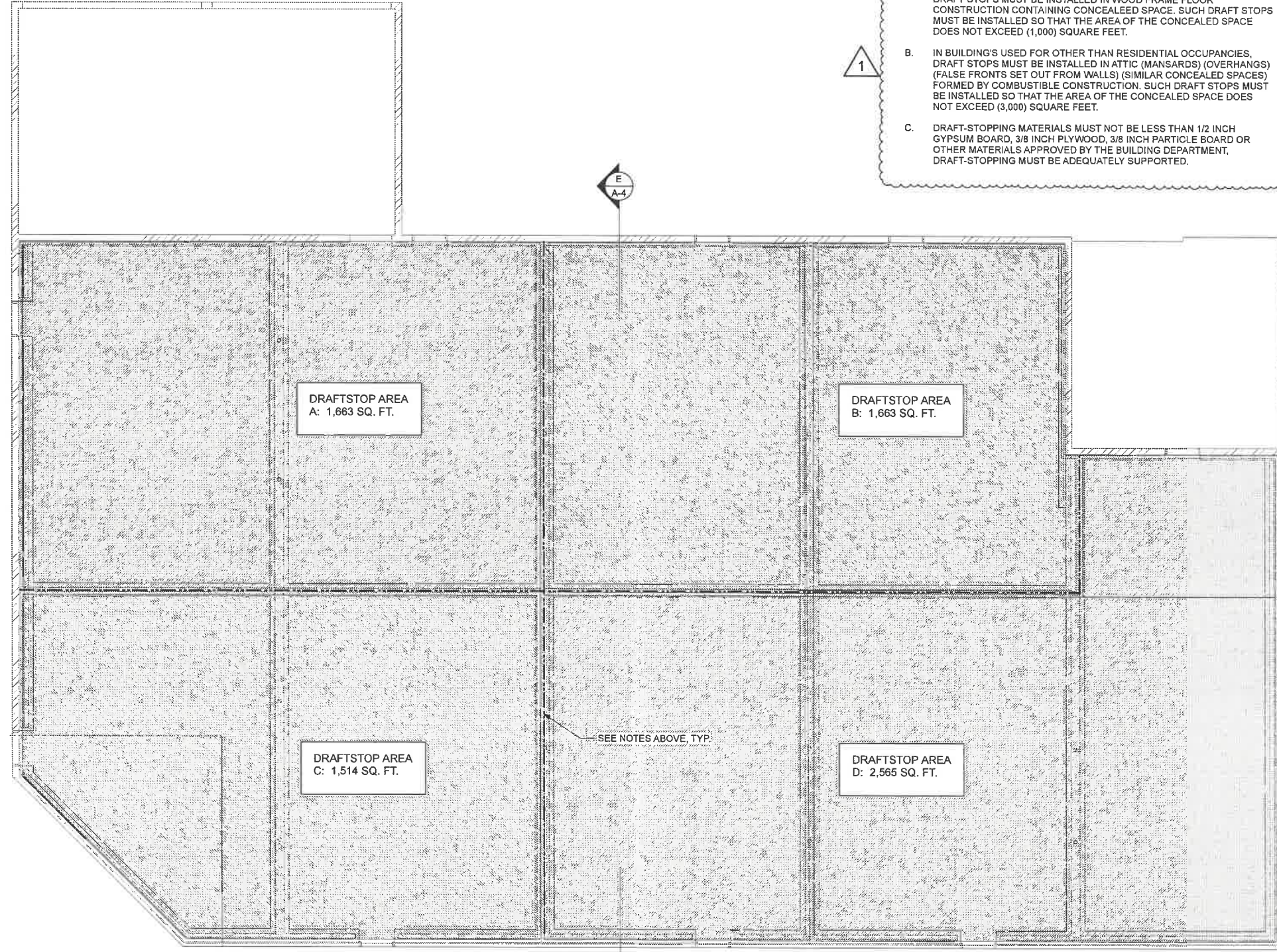
THIS DOCUMENT AND THE IDEAS AND DESIGN HEREIN, AS AN INSTRUMENT OF PROFESSIONAL SERVICE, IS THE PROPERTY OF JDO+ ASSOCIATES, INC. AND IS NOT TO BE USED, IN WHOLE OR IN PART, FOR ANY PROJECT WITHOUT THE WRITTEN AUTHORIZATION OF JDO+ ASSOCIATES, INC.

Revisions	
1	PLAN CHECK 04-21-2021

DRAFT-STOP NOTES

- A. IN BUILDING'S USED FOR OTHER THAN RESIDENTIAL OCCUPANCIES, DRAFT STOPS MUST BE INSTALLED IN WOOD FRAME FLOOR CONSTRUCTION CONTAINING CONCEALED SPACE. SUCH DRAFT STOPS MUST BE INSTALLED SO THAT THE AREA OF THE CONCEALED SPACE DOES NOT EXCEED (1,000) SQUARE FEET.
- B. IN BUILDING'S USED FOR OTHER THAN RESIDENTIAL OCCUPANCIES, DRAFT STOPS MUST BE INSTALLED IN ATTIC (MANSARDS) (OVERHANGS) (FALSE FRONTS SET OUT FROM WALLS) (SIMILAR CONCEALED SPACES) FORMED BY COMBUSTIBLE CONSTRUCTION. SUCH DRAFT STOPS MUST BE INSTALLED SO THAT THE AREA OF THE CONCEALED SPACE DOES NOT EXCEED (3,000) SQUARE FEET.
- C. DRAFT-STOPPING MATERIALS MUST NOT BE LESS THAN 1/2 INCH GYPSUM BOARD, 3/8 INCH PLYWOOD, 3/8 INCH PARTICLE BOARD OR OTHER MATERIALS APPROVED BY THE BUILDING DEPARTMENT, DRAFT-STOPPING MUST BE ADEQUATELY SUPPORTED.

1



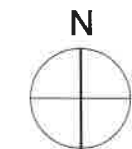
E
A-4

E
A-4

----- INDICATES DRAFT STOP

DRAFT STOP PLAN

EXHIBIT "A"
 Page No. 4 of 9 3/16" = 1'-0"
 Case No. 2A-2021-7185

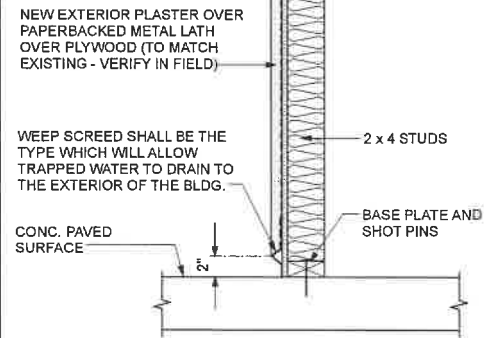
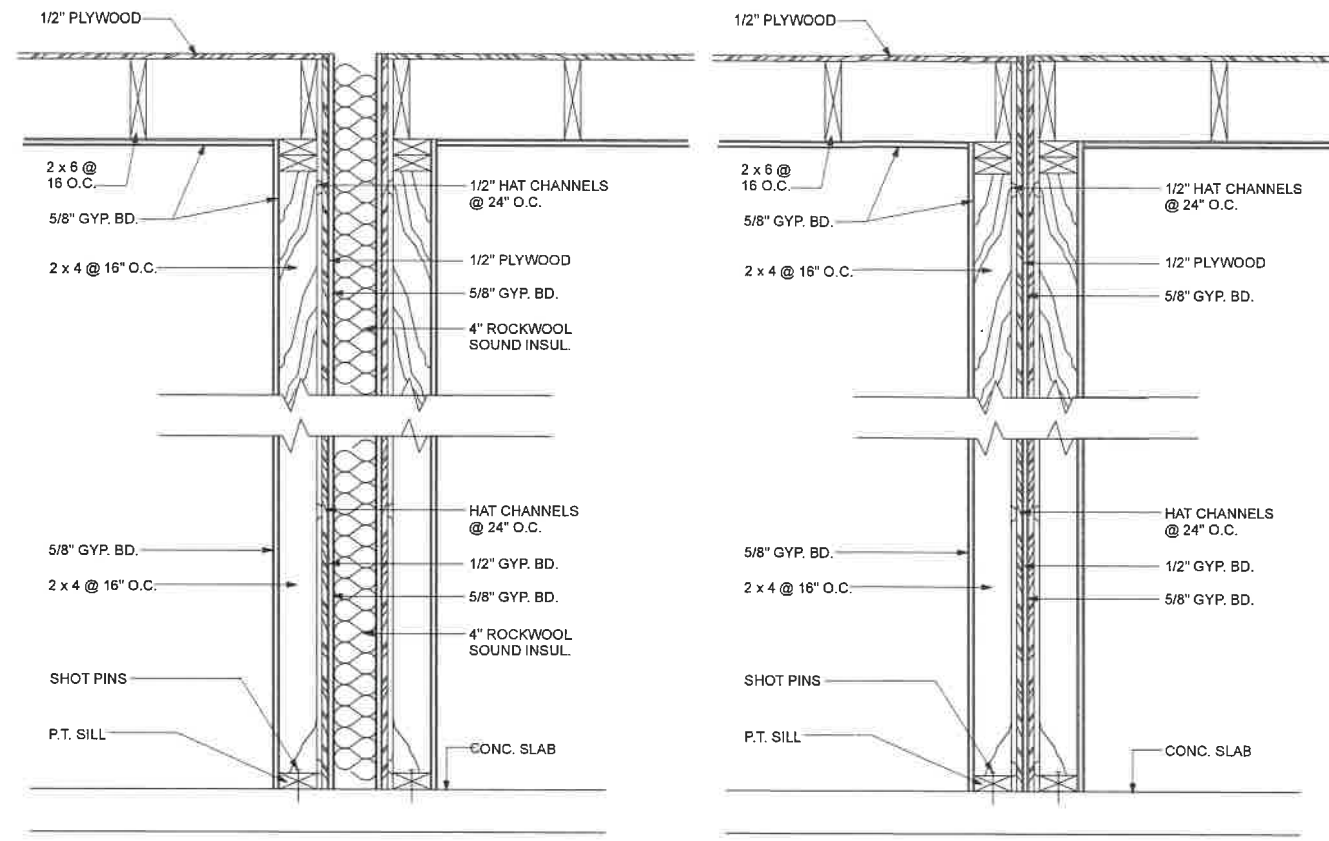


PRODUCERS RECORDING STUDIOS
 10859 BURBANK BLVD.
 NORTH HOLLYWOOD, CA
 91601

DRAFT STOP PLAN

Date: _____
 Job: _____
 Drawn by: _____
 Sheet: _____

A-3.3



EXTERIOR WALL A SC: 1 1/2" = 1'-0"

SOUND WALL B SC: 1 1/2" = 1'-0"

SOUND WALL C SC: 1 1/2" = 1'-0"

System No. F-A-1136

ANSI/UL1479 (ASTM E814)	CAN/ULC S115
F Ratings — 2 & 3 Hr (See Item 3B)	F Ratings — 2 & 3 Hr (See Item 3B)
T Rating — 0 Hr	FT Rating — 0 Hr
L Rating At Ambient — Less Than 1 CFM/sq ft	FH Ratings — 2 & 3 Hr (See Item 3B)
L Rating At 400 F — Less Than 1 CFM/sq ft	FTH Rating — 0 Hr
W Rating — Class 1	L Rating At Ambient — Less Than 1 CFM/sq ft
	L Rating At 400 F — Less Than 1 CFM/sq ft

SECTION A-A

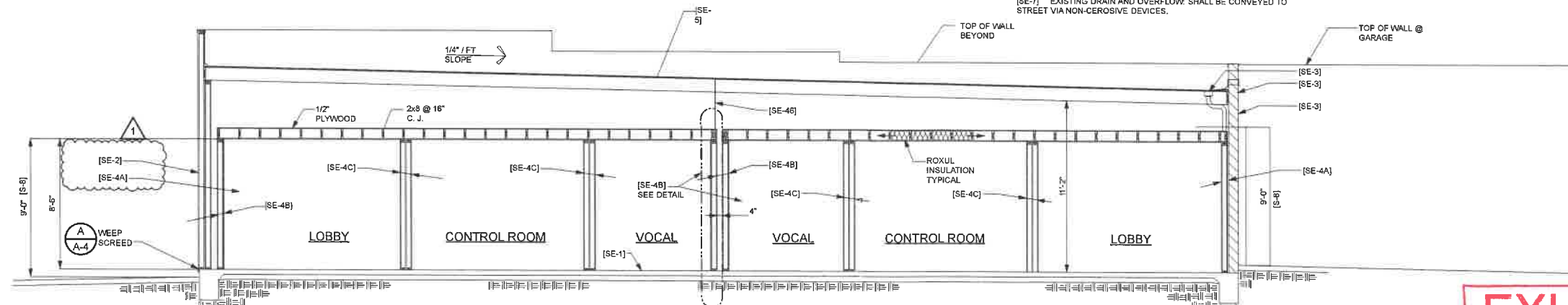
- Floor Assembly** — The fire-rated unprotected concrete and steel floor assembly shall be constructed of the materials and in the manner specified in the individual D390 Series designs in the UL Fire Resistance Directory and as summarized below:
 - A. Concrete — Min 3-1/2 in. (89 mm) thickness of reinforced lightweight or normal weight concrete (100-150 pcf or 1600-2400 kg/m³), as measured from the top plane of the floor units.
 - B. Steel Floor and Form Units* — Composite or noncomposite 2 to 3 in. (51 to 76 mm) deep fluted galv units as specified in the Individual Floor-Ceiling design. Max diam of opening core-drilled through floor assembly is 10-1/2 in. (267 mm).
- Through Penetrants** — One metallic pipe, conduit or tubing to be installed either concentrically or eccentrically within the firestop system. Pipe, conduit or tubing to be rigidly supported on both sides of floor assembly. The following types and sizes of metallic pipes, conduits or tubing may be used:
 - A. Steel Pipe — Nom 8 in. (203 mm) diam (or smaller) Schedule 40 (or heavier) steel pipe. The annular space shall be min 1/4 in. (6 mm) to max 1-5/8 in. (41 mm).
 - B. Iron Pipe — Nom 8 in. (203 mm) diam (or smaller) cast or ductile iron pipe. The annular space shall be min 1/4 in. (6 mm) to max 1-5/8 in. (41 mm).
 - C. Conduit — Nom 4 in. (102 mm) diam (or smaller) steel electrical metallic tubing or steel conduit. The annular space shall be min 1/4 in. (6 mm) to max 1-3/8 in. (41 mm).
 - D. Copper Tubing — Nom 4 in. (102 mm) diam (or smaller) Type L (or heavier) copper tubing. The annular space shall be min 1/4 in. (6 mm) to max 1-5/8 in. (41 mm).
 - E. Copper Pipe — Nom 4 in. (102 mm) diam (or smaller) Regular (or heavier) copper pipe. The annular space shall be min 1/4 in. (6 mm) to max 1-5/8 in. (41 mm).
- Firestop System** — The firestop system shall consist of the following:
 - A. Packing Material — Min 4 in. (102 mm) thickness of min 4.0 pcf (84 kg/m³) mineral wool batt insulation firmly packed into opening as a permanent form. Packing material to be recessed from top surface of floor as required to accommodate the required thickness of fill material.
 - B. Fill "Void or Cavity Material" — Gask — Min 1/2 in. (13 mm) thickness of fill material applied within the annulus, flush with top surface of floor.

Hilti Firestop Systems Reproduced by Hilti, Inc. Courtesy of Underwriters Laboratories, Inc. December 27, 2013

DETAIL CONDUIT PENETRATION AT CMU WALL D

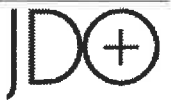
SECTION NOTES

- [SE-1] EXISTING CONC. SLAB. ASSUME 4" THK. REINFORCING UNKNOWN.
- [SE-2] EXTERIOR PLASTER ON 2x4 STUDS.
- [SE-3] EXTERIOR WALL: 8" NOMINAL CMU.
- [SE-4A] SOUND WALL A: 5/8" GYP. BD. EA SIDE OF 2x4 STUDS @ 16" O.C.
- [SE-4B] SOUND WALL B: SEE SOUND WALL DETAIL BIA-4
- [SE-4C] SOUND WALL C: 5/8" GYP. BD. EA SIDE OF 2x4 STUDS @ 16" O.C. BACK-TO-BACK WITH SAME.
- [SE-5] EXISTING CLASS A BUILT-UP ROOF ON PLYWOOD SHTG. ON 2x ROOF JOISTS SLOPED TO DRAIN TO NORTH SIDE OF BUILDING.
- [SE-6] DRAFT STOP: 1/2" GYP. BD.
- [SE-7] EXISTING DRAIN AND OVERFLOW. SHALL BE CONVEYED TO STREET VIA NON-CEROSIVE DEVICES.



BUILDING SECTION E SC: 1/8" = 1'-0"

EXHIBIT "A"
 Page No. 7 of 9
 Case No. 2A-2021-7185



Associates
 31822 Village Center Road
 Suite 105
 Westlake Village, CA 91361
 Phone 818. 706. 3997



THIS DOCUMENT AND THE IDEAS AND DESIGN HEREIN AS AN INSTRUMENT OF PROFESSIONAL SERVICES IS THE PROPERTY OF JDO+ ASSOCIATES, INC. AND IS NOT TO BE USED, IN WHOLE OR IN PART, FOR ANY PROJECT WITHOUT THE WRITTEN AUTHORIZATION OF JDO+ ASSOCIATES, INC.

Revisions	
1	PLAN CHECK 04-21-2021

PRODUCERS RECORDING STUDIOS

10859 BURBANK BLVD.
 NORTH HOLLYWOOD, CA 91601

SECTION A

Date: _____
 Job: _____
 Drawn by: _____
 Sheet: _____

A-4