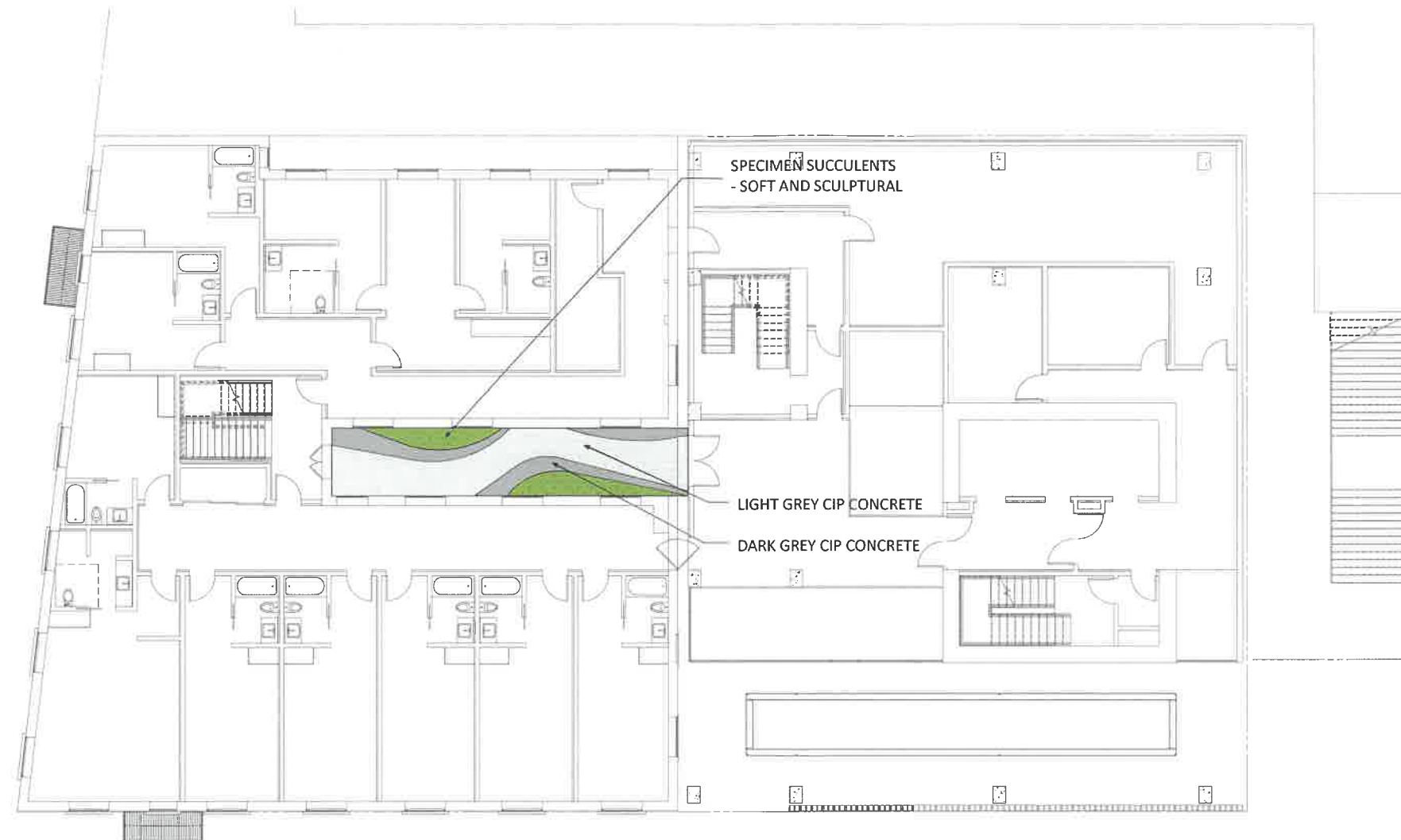




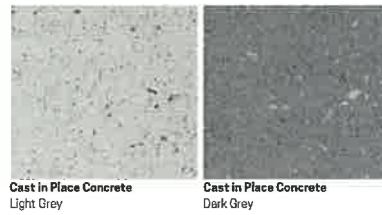
12/21/18 3:06:53 PM

### LEVEL 2 HARDSCAPE AND LANDSCAPE AREA CALCULATIONS:

	AREA (SQ. FEET)
HARDSCAPE	274 SQ. FT.
LANDSCAPE	64 SQ. FT.



#### HARDSCAPE MATERIALS:



#### PLANTING PALETTE:

##### SPECIMEN SUCCULENTS:



THIS DRAWING AND THE INFORMATION CONTAINED HEREIN ARE THE COPYRIGHTED WORK OF ONSHAWK ARCHITECTS AND MAY NOT BE REPRODUCED WITHOUT WRITTEN PERMISSION.

**superjacent**

# RENDON HOTEL

2053 E 7TH ST, LOS ANGELES, CA 90021

EXHIBIT A

THE RENDON, LLC  
1880 CENTURY PARK EAST #200  
LOS ANGELES, CA 90067

REVISIONS:

JOB NO.: 18-003 OM

DATE: 12.21.18

SCALE: 1/8" = 1'-0"

SHEET TITLE:  
ENTITLEMENT  
LANDSCAPE-  
LEVEL 2

SHEET NUMBER:

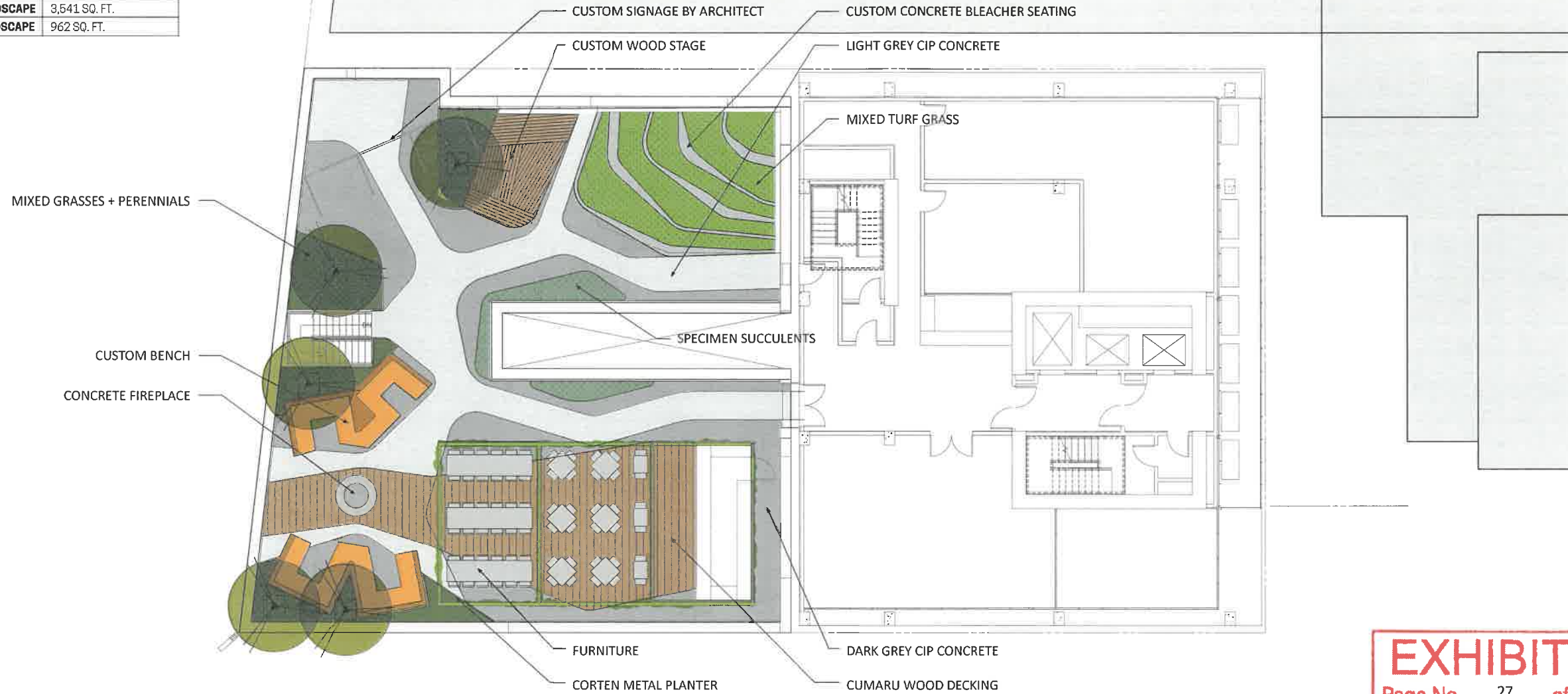
## L1.20

**EXHIBIT "A"**  
 Page No. 26 of 29  
 Case No. CPC-2017-4734-GRA-ZC-ND-CUB-CLX-ZV-ZAA-SPR-RDP

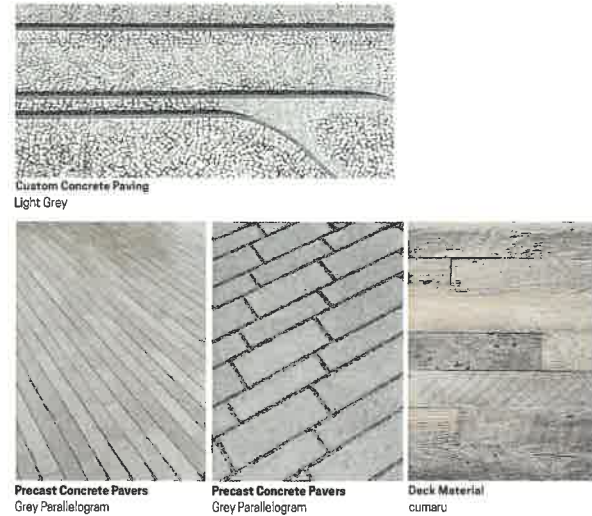
12/2/18 3:56:45 PM

### LEVEL 4 HARDSCAPE AND LANDSCAPE AREA CALCULATIONS:

	AREA (SQUARE FEET)
HARDSCAPE	3,541 SQ. FT.
LANDSCAPE	962 SQ. FT.



#### HARDSCAPE MATERIALS:



#### PLANTING PALETTE:



**EXHIBIT "A"**  
Page No. 27 of 29  
Case No. CP-2017-4734-GPA-ZC-HD-CUB-CUX-ZV-ZAA-SPR-RDP

superjacent

# RENDON HOTEL

2053 E 7TH ST., LOS ANGELES, CA 90021

EXHIBIT A

THE RENDON, LLC  
1880 CENTURY PARK EAST #200  
LOS ANGELES, CA 90067

REVISIONS:

JOB NO:  
18-003 OM

DATE:  
12.21.18

SCALE:  
1/8" = 1'-0"

SHEET TITLE:  
ENTITLEMENT  
LANDSCAPE-  
LEVEL 4

SHEET NUMBER:

**L1.40**

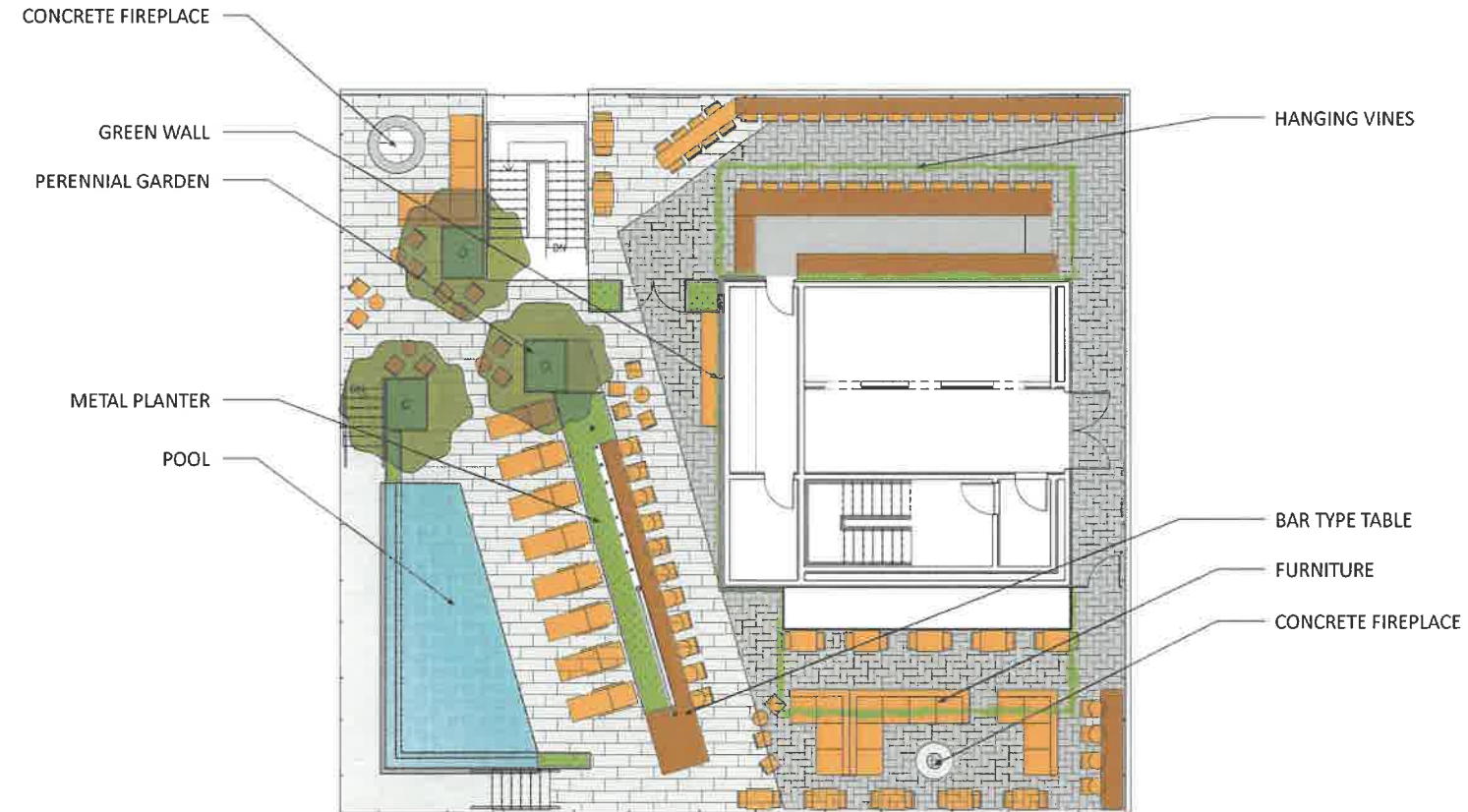
THIS DRAWING AND THE INFORMATION CONTAINED HEREIN ARE THE COPYRIGHTED WORK OF OMBURNING ARCHITECTS AND MAY NOT BE REPRODUCED WITHOUT WRITTEN PERMISSION.



12/21/18 7:06:43 PM

### LEVEL 15 HARDSCAPE AND LANDSCAPE AREA CALCULATIONS:

	AREA (SQUARE FEET)
HARDSCAPE	3,500 SQ. FT.
LANDSCAPE	146 SQ. FT.



**superjacent**

**RENDON HOTEL**  
2053 E 7TH ST, LOS ANGELES, CA 90021  
EXHIBIT A

THE RENDON, LLC  
1880 CENTURY PARK EAST #200  
LOS ANGELES, CA 90067

REVISIONS:

JOB NO: 18-003 OM

DATE: 12.21.18

SCALE: 1/8" = 1'-0"

SHEET TITLE:  
**ENTITLEMENT  
LANDSCAPE-  
LEVEL 15**

SHEET NUMBER:

**L1.150**

### HARDSCAPE MATERIALS:



### PLANTING PALETTE:

#### TREE:



Chitalpa x taskentensis  
X Chitalpa

#### PERENNIAL GARDEN:



Artemisia 'Povis Castle'  
Wormwood



Agave attenuata  
Foxtail Agave



Teucrium fruticans  
Bush Germander



Lupinus longifolius  
Blue Bush Lupine



Santolina virens  
Green Lavender Cotton

#### HANGING VINES:



Wisteria sinensis alba  
Chinese Wisteria



Wisteria macrostachya  
Kentucky Wisteria

#### GREEN WALL:



Festuca glauca  
Elijah Blue Fescue



Hedera helix  
Common Ivy



Pentagramma triangularis  
Gold Back Fern

**EXHIBIT "A"**  
Page No. 29 of 29  
Case No. CPC-2017-4734-GPA-2C-HD-CLJ-2V-ZAA-SFR-RDP

THIS DRAWING AND THE INFORMATION CONTAINED HEREIN ARE THE COPYRIGHTED WORK OF DRAWING ARCHITECTS AND MAY NOT BE REPRODUCED WITHOUT WRITTEN PERMISSION.