

VERTOCH DESIGN ARCHITECTS INC.

1423 N. GLOVERFIELD BLVD.
SANITA, CALIF. 92078
TEL: 619-441-8887
FAX: 619-441-8887

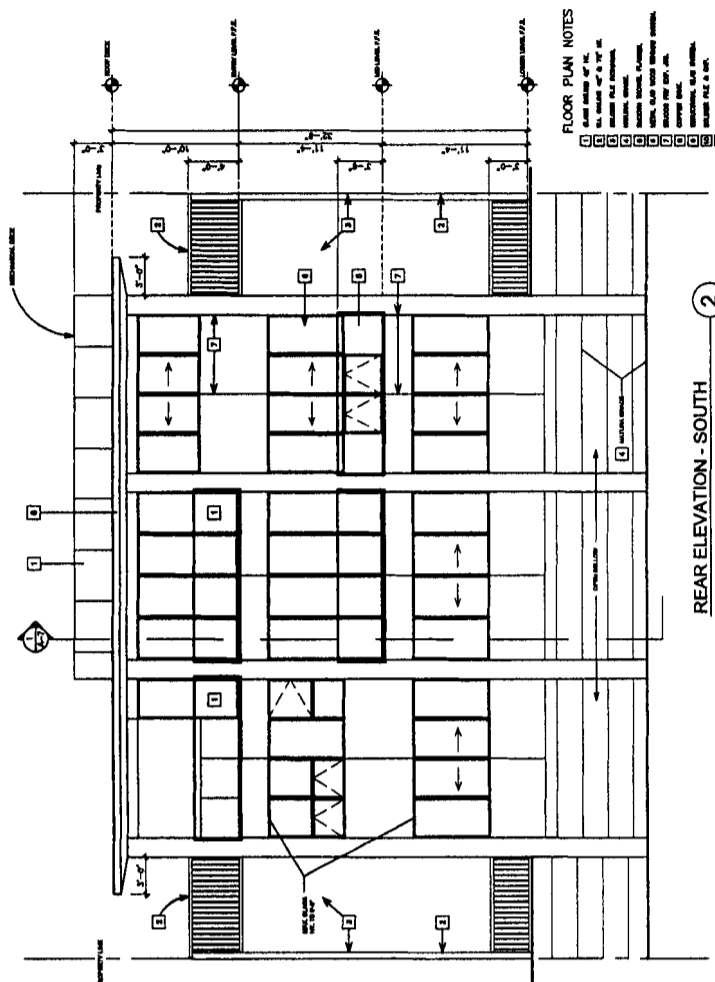
DATE	APRIL 16, 2008
DRAWN BY	DAVID W. BROWN
CHECKED BY	DAVID W. BROWN
PROJECT INFORMATION	

RESIDENCE @
1725 CANTILLANNA DRIVE
PACIFIC PALMS, CA 90272

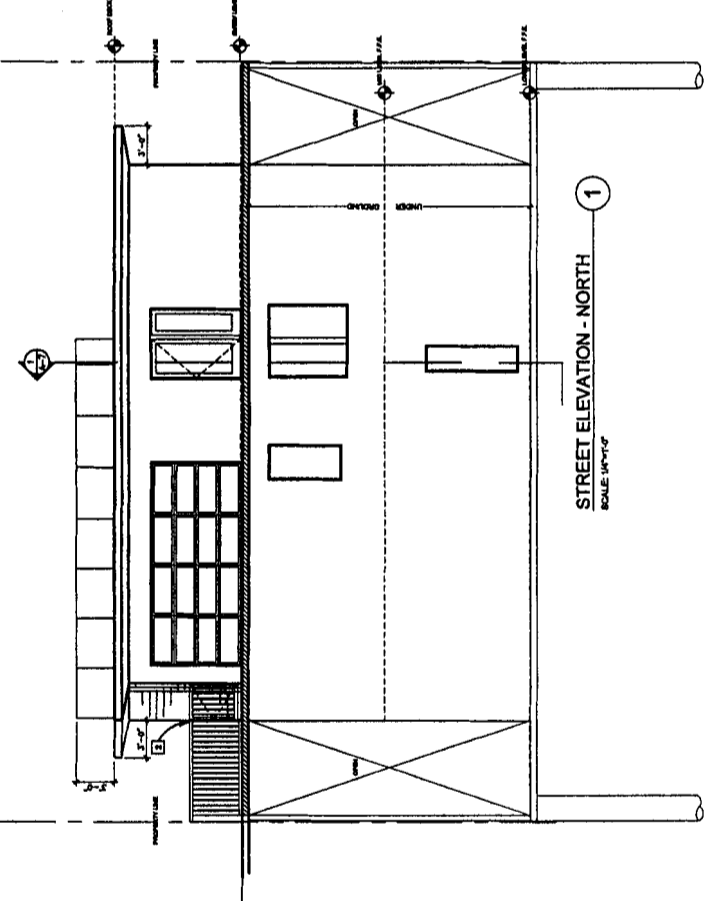
EXTERIOR ELEVATIONS

SCALE	1/4" = 1'-0"
DATE	APRIL 16, 2008
DRAWN BY	DAVID W. BROWN
CHECKED BY	DAVID W. BROWN
PROJECT INFORMATION	

A-6.0

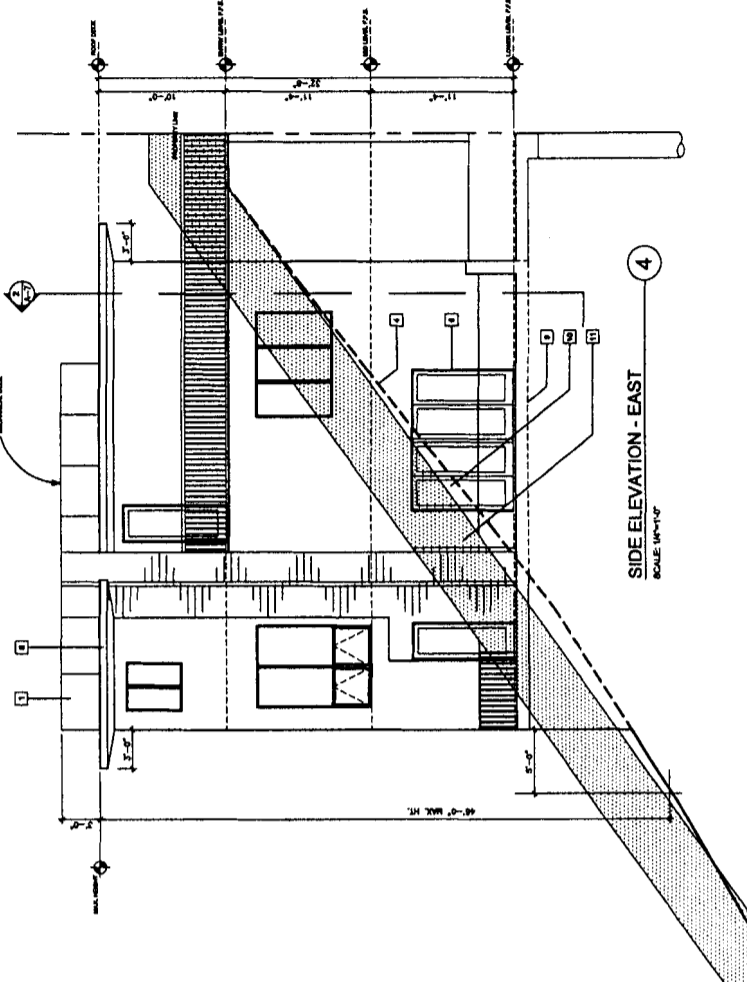


REAR ELEVATION - SOUTH
SCALE: 1/4" = 1'-0"

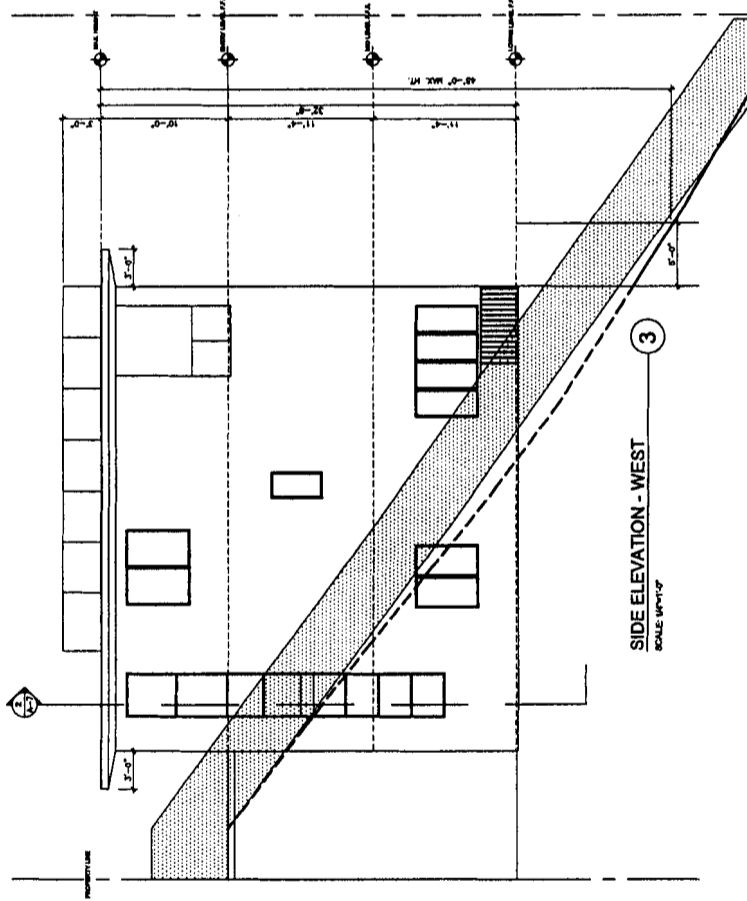


STREET ELEVATION - NORTH
SCALE: 1/4" = 1'-0"

FLOOR PLAN NOTES
 1. ALL WORK TO BE DONE IN ACCORDANCE WITH THE 2007 CALIFORNIA BUILDING CODE.
 2. ALL WORK TO BE DONE IN ACCORDANCE WITH THE 2007 CALIFORNIA MECHANICAL CODE.
 3. ALL WORK TO BE DONE IN ACCORDANCE WITH THE 2007 CALIFORNIA ELECTRICAL CODE.
 4. ALL WORK TO BE DONE IN ACCORDANCE WITH THE 2007 CALIFORNIA PLUMBING CODE.
 5. ALL WORK TO BE DONE IN ACCORDANCE WITH THE 2007 CALIFORNIA FIRE CODE.
 6. ALL WORK TO BE DONE IN ACCORDANCE WITH THE 2007 CALIFORNIA LANDMARK PRESERVATION ACT.
 7. ALL WORK TO BE DONE IN ACCORDANCE WITH THE 2007 CALIFORNIA HISTORIC PRESERVATION ACT.
 8. ALL WORK TO BE DONE IN ACCORDANCE WITH THE 2007 CALIFORNIA ANTI-SLURRY ACT.
 9. ALL WORK TO BE DONE IN ACCORDANCE WITH THE 2007 CALIFORNIA ANTI-TRUST ACT.
 10. ALL WORK TO BE DONE IN ACCORDANCE WITH THE 2007 CALIFORNIA ANTI-COMMERCE ACT.



SIDE ELEVATION - EAST
SCALE: 1/4" = 1'-0"



SIDE ELEVATION - WEST
SCALE: 1/4" = 1'-0"