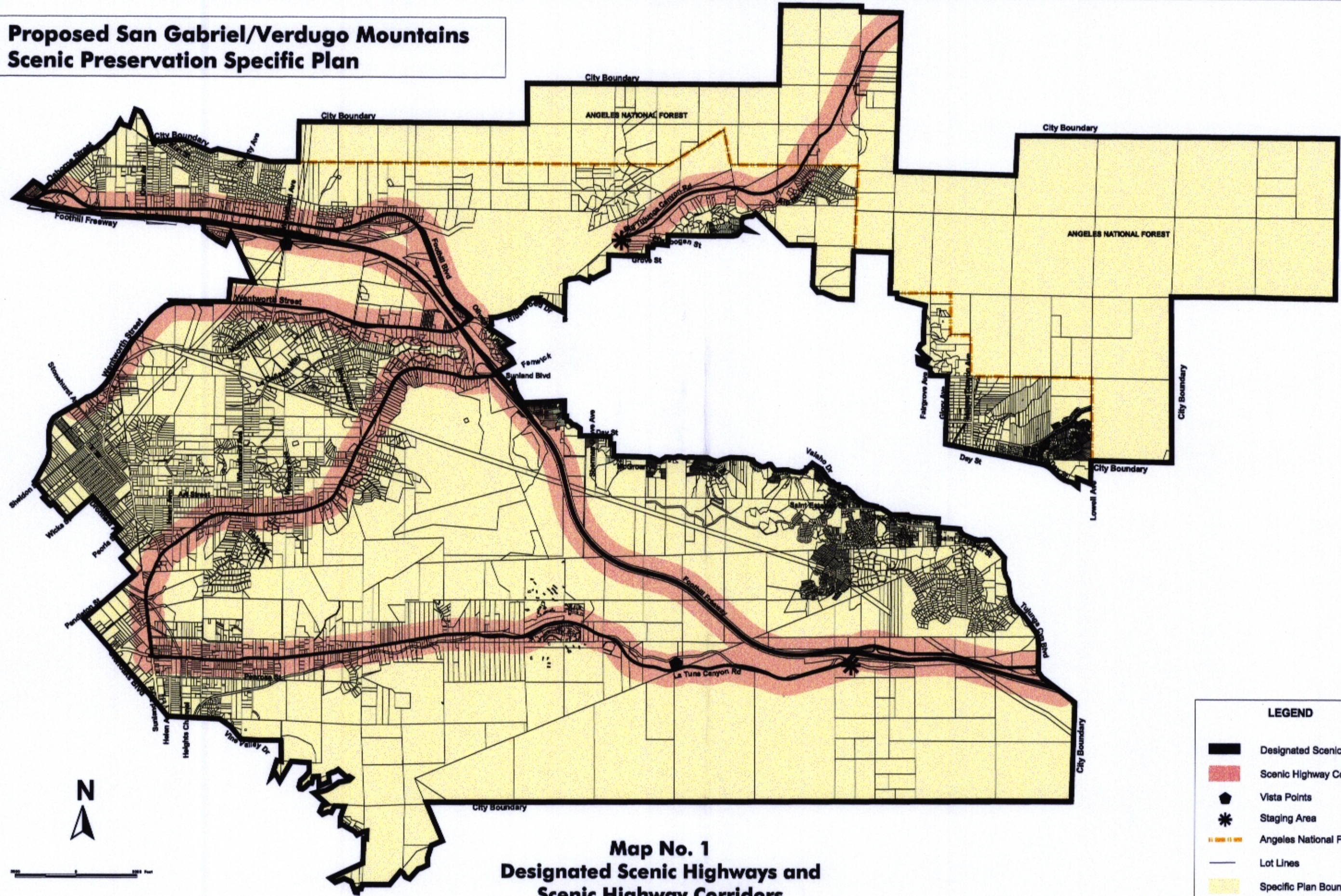
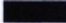








# Proposed San Gabriel/Verdugo Mountains Scenic Preservation Specific Plan



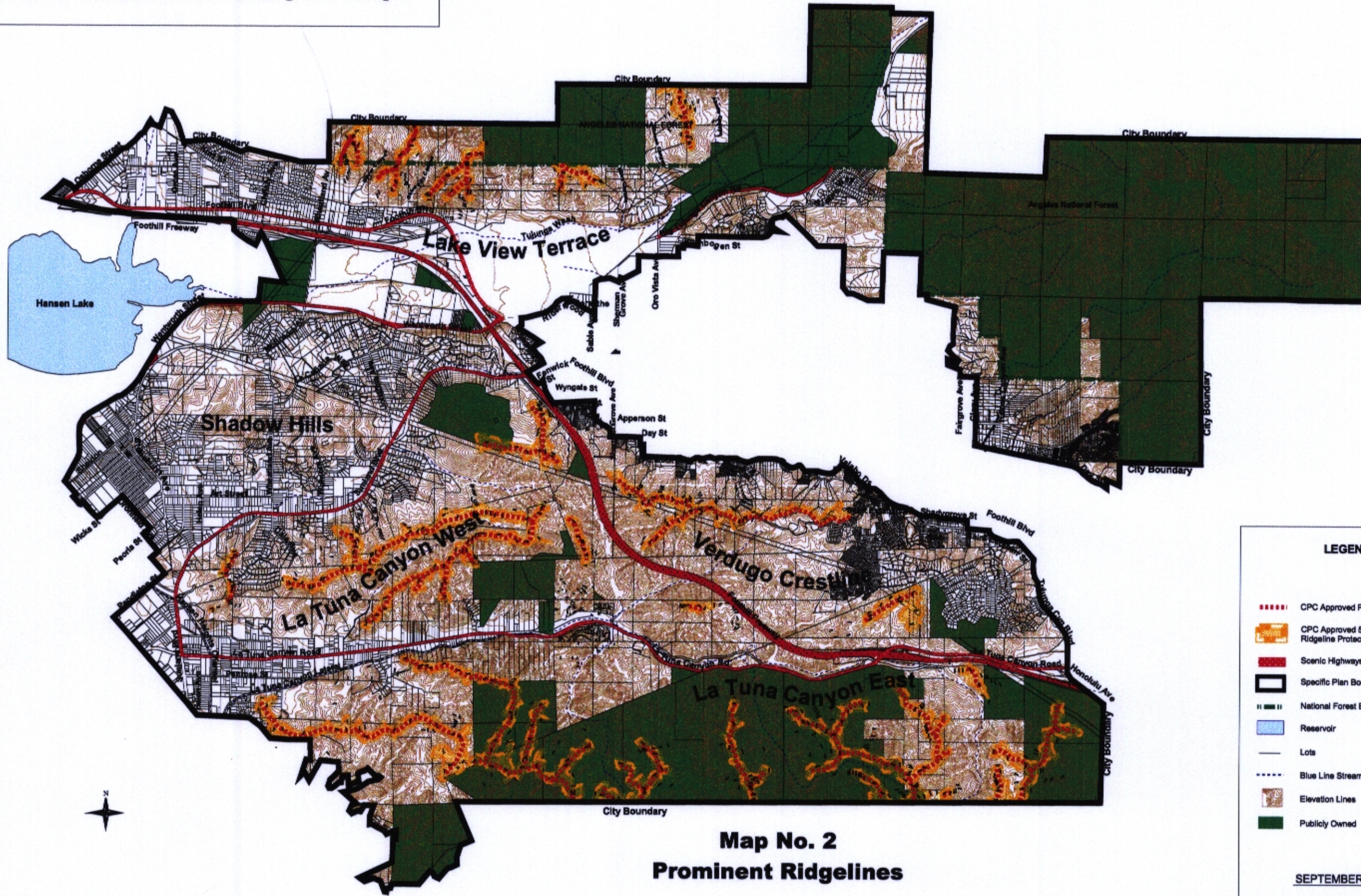
**Map No. 1**  
**Designated Scenic Highways and**  
**Scenic Highway Corridors**

**LEGEND**

-  Designated Scenic Highways
-  Scenic Highway Corridors
-  Vista Points
-  Staging Area
-  Angeles National Forest
-  Lot Lines
-  Specific Plan Boundary

Valley Graphics: D:\Sun\Tuj\053.map1:08.15.2002

# San Gabriel / Verdugo Mountains Scenic Preservation Analysis Map



**Map No. 2  
Prominent Ridgelines**

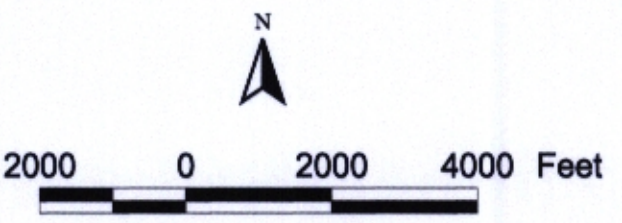
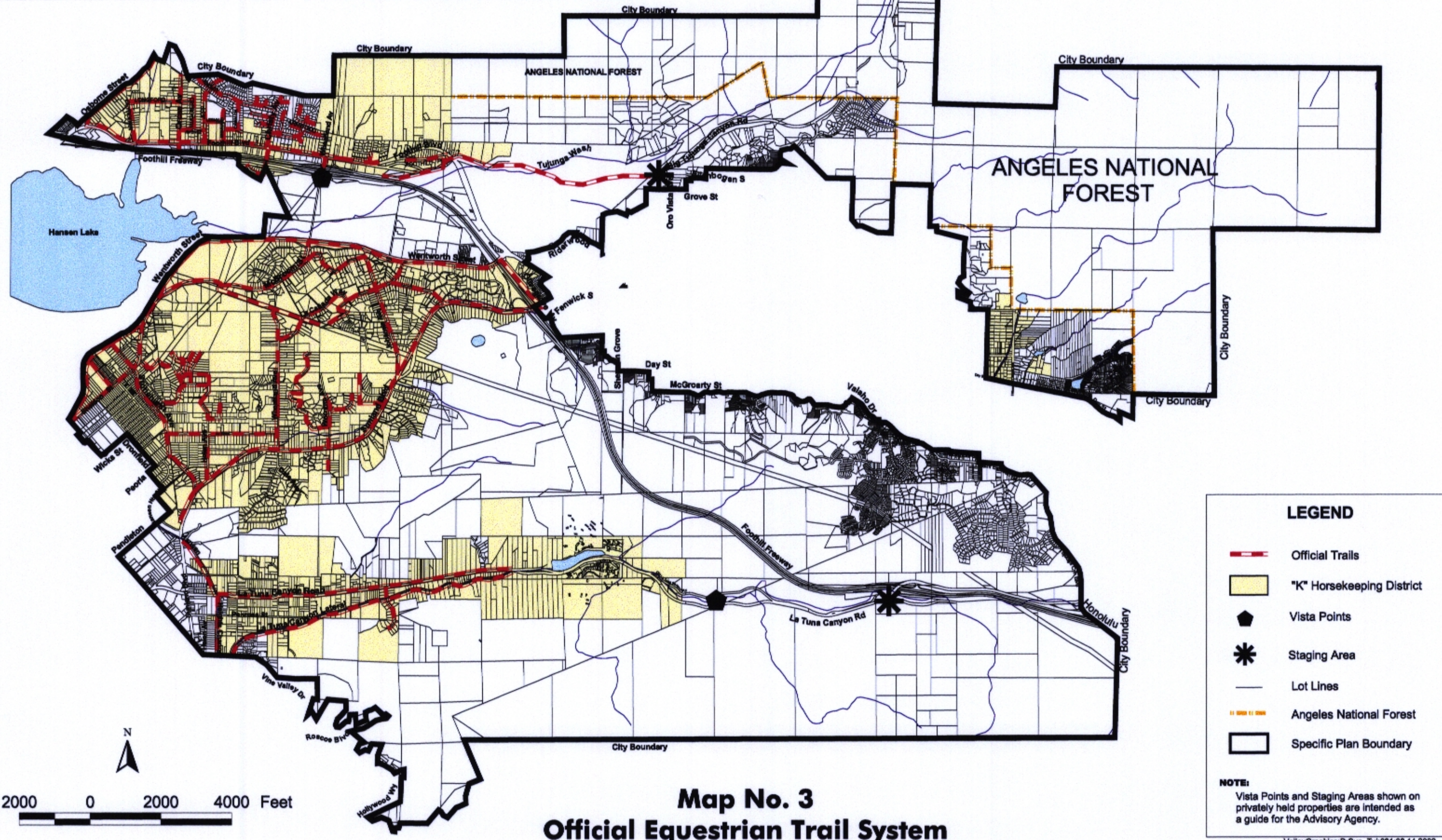
**LEGEND**

- CPC Approved Prominent Ridgelines
- Orange Shaded Area CPC Approved 50' Prominent Ridgeline Protection Areas
- Red Line Scenic Highways
- Thick Black Line Specific Plan Boundary
- Double Black Line National Forest Boundary
- Blue Area Reservoir
- Blue Dashed Line Blue Line Streams
- Brown Line Elevation Lines
- Green Area Publicly Owned

SEPTEMBER 2002

ValleyGraphics:D:\Sun\_T4\060 based on 066 map2:06.14.2002

# Proposed San Gabriel/Verdugo Mountains Scenic Preservation Specific Plan



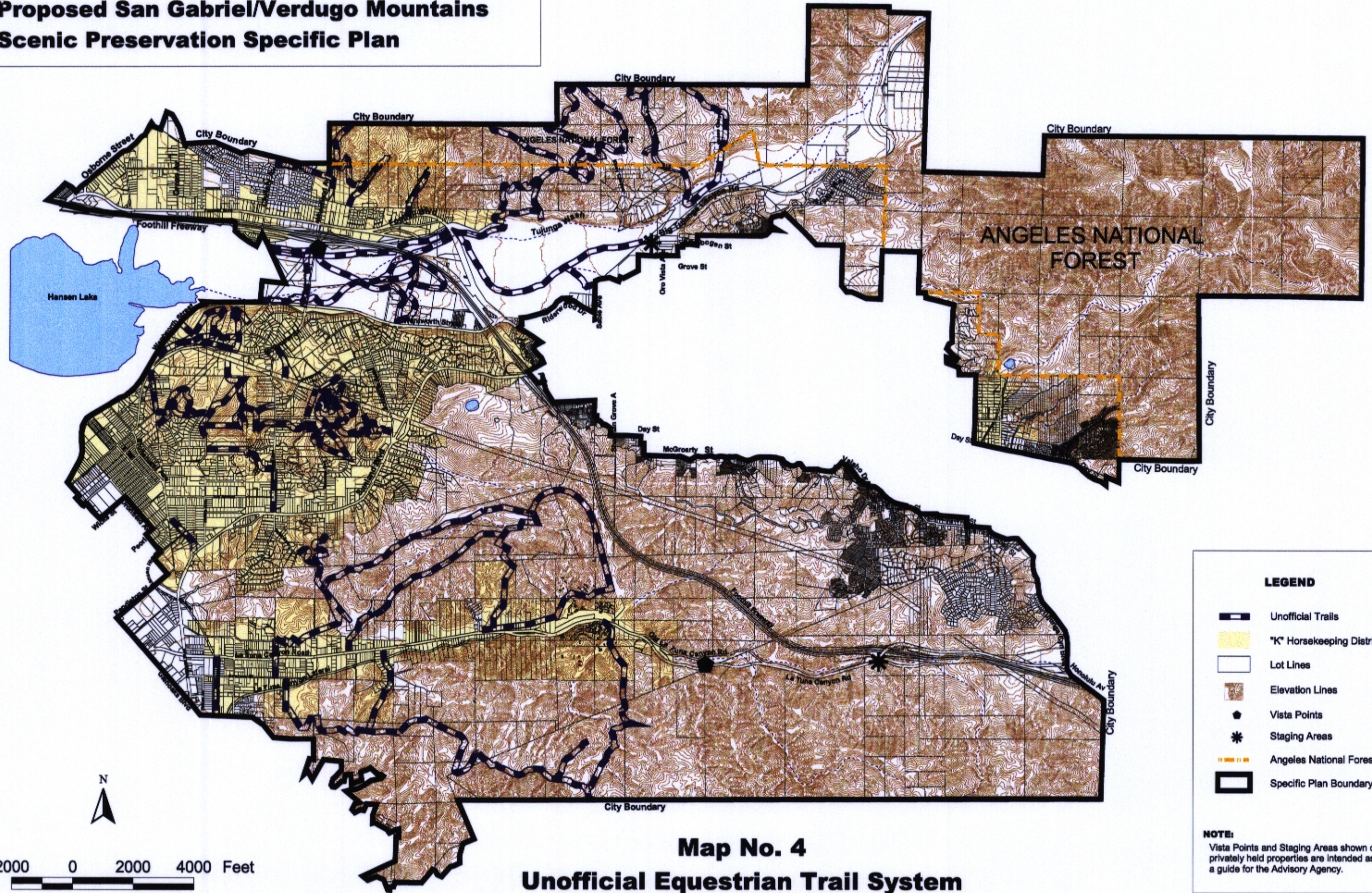
**Map No. 3**  
**Official Equestrian Trail System**

**LEGEND**

- Official Trails
- "K" Horsekeeping District
- Vista Points
- Staging Area
- Lot Lines
- Angeles National Forest
- Specific Plan Boundary

**NOTE:**  
Vista Points and Staging Areas shown on privately held properties are intended as a guide for the Advisory Agency.

# Proposed San Gabriel/Verdugo Mountains Scenic Preservation Specific Plan



**Map No. 4**  
**Unofficial Equestrian Trail System**

**LEGEND**

- Unofficial Trails
- "K" Horsekeeping District
- Lot Lines
- Elevation Lines
- Vista Points
- Staging Areas
- Angeles National Forest
- Specific Plan Boundary

**NOTE:**  
Vista Points and Staging Areas shown on privately held properties are intended as a guide for the Advisory Agency.

