

PATH OF EGRESS LEGEND

PER C.B.C. TABLE 1505.1 ROOF SYSTEMS FOR BUILDINGS OF TYPE V-A CONSTRUCTION TO HAVE MINIMUM CLASS A FIRE RATING. INDICATES AREA TO RECEIVE COOL ROOF RATING COUNCIL APPROVED TPO SINGLE PLY FULLY ADHERED MEMBRANE (MINIMUM 20-YEAR FLOOR) (ASTM D6878)

A. SLOPE MINIMUM 1/4"=1" (1/8" IN 1')

B. PRODUCT NAME: CARLSLE SURE-WELD TPO REINFORCED MEMBRANE 60 MIL

C. U.L. # ESR 1463

D. CRIC # 0698-9002

E. COLOR: WHITE

F. INITIAL SOLAR REFLECTANCE INDEX 89 PER ASTM E1990.

G. PRODUCT WARRANTY: 20 YR. NDL WARRANTY (VENDOR CERTIFIED APPLICATORS)

INDICATES ROOF MEMBRANE TRAFFIC PAD 32" SQ. DYMA-TRED SECURE TO ROOFING PER MANUFACTURERS REQUIREMENTS. PROVIDE 3" SPACE BETWEEN PADS FOR DRAINAGE FLOW THROUGH LENGTH OF SWALE LINE

INDICATES CRICKET SWALE LINE PROVIDE MIN. 1/4"=12" SLOPE ALONG LENGTH OF SWALE LINE

INDICATES RAIN GUTTER PROVIDE 5" DIAMETER HALF ROUND ALUMINUM GUTTER FACTORY FINISHED. INSTALL GUTTER AND DOWNSPOUT PER SIMONS RECOMMENDATIONS.

INDICATES 4" WIDE x 3" HIGH ROOF DRAIN SCUPPER WITH 6" WIDE x 6" HIGH OVERFLOW SCUPPER. OPENING SIZES PER C.P.C. TABLE 1101.11 2" PER HOUR. SEE PLUMBING OR CIVIL PLANS FOR CONTINUATION OF DRAINAGE.

ROOF MATERIAL UNCOLORED CONCRETE WITH SMOOTH CEMENT FINISH WITH SOLAR REFLECTANCE OF 0.35.

GREEN NOTES:

1) THE MAIN ELECTRICAL SERVICE PANEL SHALL HAVE A RESERVED SPACE TO ALLOW FOR INSTALLATION OF A DOUBLE POLE CIRCUIT BREAKER FOR A FUTURE SOLAR ELECTRIC INSTALLATION. THE RESERVED SPACE SHALL BE POSITIONED AT OPPOSITE (LOAD) END FROM THE INPUT FEEDER LOCATION OR MAIN CIRCUIT LOCATION AND SHALL BE PERMANENTLY MARKED AS * FOR FUTURE SOLAR ELECTRICAL. 2) SRI VALUE SHALL BE AT LEAST 16.

NOTE:

ACCESSIBLE ROUTE OF TRAVEL IS DEFINED AS "A CONTINUOUS AND UNOBSTRUCTED PATH CONNECTING ALL ACCESSIBLE ELEMENTS AND SPACES IN AN ACCESSIBLE BUILDING OR FACILITY THAT CAN BE NEGOTIATED BY A PERSON WITH A SEVERE DISABILITY USING A WHEELCHAIR AND THAT IS ALSO SAFE FOR AND USABLE BY PERSONS WITH OTHER DISABILITIES."

-SLIP RESISTANT FLOOR FINISH.

NOTE:

ACCESSIBLE ROUTE OF TRAVEL IS DEFINED AS "A CONTINUOUS AND UNOBSTRUCTED PATH CONNECTING ALL ACCESSIBLE ELEMENTS AND SPACES IN AN ACCESSIBLE BUILDING OR FACILITY THAT CAN BE NEGOTIATED BY A PERSON WITH A SEVERE DISABILITY USING A WHEELCHAIR AND THAT IS ALSO SAFE FOR AND USABLE BY PERSONS WITH OTHER DISABILITIES."

-SLIP RESISTANT FLOOR FINISH.

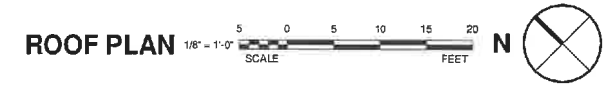
PATH OF EGRESS LEGEND

--- ACCESSIBLE PATH OF TRAVEL (MAX 5% SLOPE & 2% CROSS SLOPE)

--- PATH OF TRAVEL

--- PATH OF EGRESS TO THE PUBLIC

EXHIBIT "A"
 Page No. 12 of 21
 Case No. ADM-2025-3124-DB-VHCA-RED1



1401 WESTWOOD BLVD #200
 LOS ANGELES, CA 90024
 TEL: 310 503 7129

OWNER:

ARCHITECT:



11907 CULVER BLVD
 11907 CULVER BLVD. LOS ANGELES, CA 90066

PROJECT INFO:

Drawn By Author
 Checked By Checker
 Date Issue Date

ISSUED / REVISIONS

No.	Description	Date

SHEET NUMBER

ROOF PLAN

SHEET TITLE

A2.6

LADBS STAMP

12/2/2025 1:54:14 PM